



Field Data Sheet





Field Data Sheet

Notes :

Do you need to report observations of another open field?

Yes



Field Data Sheet

Corresponding Point ID(s): 68

Anthropogenic Disturbance/Management Practices: Traffic Noise

Primary Open Field Cover Type: Row Cropland (Active)

Estimated Grass Cover (%): None

Estimated Forb Cover (%): 1-10%

Estimated Woody Vegetation Cover (%): None

Estimated Bare Ground (%): 90-100%

Estimated Litter Depth (inches): None

Average Vegetation Height (inches): 0-2

Dominant Plant Species (Common Names):

Invasive Plant Species (Common Names):

Representative Photo(s):





Field Data Sheet





Field Data Sheet

Notes :

Do you need to report observations of another open field?

Yes



Field Data Sheet

Corresponding Point ID(s): 69

Anthropogenic Disturbance/Management Practices: Traffic Noise

Primary Open Field Cover Type: Row Cropland (Active)

Estimated Grass Cover (%): 1-10%

Estimated Forb Cover (%): None

Estimated Woody Vegetation Cover (%): None

Estimated Bare Ground (%): 90-100%

Estimated Litter Depth (inches): None

Average Vegetation Height (inches): 4-6

Dominant Plant Species (Common Names):

Invasive Plant Species (Common Names):

Representative Photo(s):





Field Data Sheet





Field Data Sheet

Notes :

Do you need to report observations of another open field?

Yes



Field Data Sheet

Corresponding Point ID(s): 59

Anthropogenic Disturbance/Management Practices: Traffic Noise

Primary Open Field Cover Type: Field Cropland (including hay, wheat, oats, etc.)

Estimated Grass Cover (%): 90-100%

Estimated Forb Cover (%): 10-25%

Estimated Woody Vegetation Cover (%): None

Estimated Bare Ground (%): None

Estimated Litter Depth (inches): 0-1"

Average Vegetation Height (inches): 30-36

Dominant Plant Species (Common Names): Grasses, bedstraw

Invasive Plant Species (Common Names):

Representative Photo(s):





Field Data Sheet





Field Data Sheet

Notes :

Do you need to report observations of another open field?

Yes



Field Data Sheet

Corresponding Point ID(s): 60

Anthropogenic Disturbance/Management Practices: None notable

Primary Open Field Cover Type: Field Cropland (including hay, wheat, oats, etc.)

Estimated Grass Cover (%): 90-100%

Estimated Forb Cover (%): 10-25%

Estimated Woody Vegetation Cover (%): None

Estimated Bare Ground (%): None

Estimated Litter Depth (inches): None

Average Vegetation Height (inches): 24-30

Dominant Plant Species (Common Names): Rye

Invasive Plant Species (Common Names):

Representative Photo(s):





Field Data Sheet





Field Data Sheet

Notes :

Do you need to report observations of another open field?

Yes



Field Data Sheet

Corresponding Point ID(s): 61

Anthropogenic Disturbance/Management Practices: Farm Equipment In Use

Primary Open Field Cover Type: Field Cropland (including hay, wheat, oats, etc.)

Estimated Grass Cover (%): 50-90%

Estimated Forb Cover (%): None

Estimated Woody Vegetation Cover (%): None

Estimated Bare Ground (%): 1-10%

Estimated Litter Depth (inches): None

Average Vegetation Height (inches): 18-24

Dominant Plant Species (Common Names): Ryes

Invasive Plant Species (Common Names):

Representative Photo(s):





Field Data Sheet





Field Data Sheet

Notes :

Active haying in field

Do you need to report observations of another open field?

Yes



Field Data Sheet

Corresponding Point ID(s): 28

Anthropogenic Disturbance/Management Practices: Traffic Noise

Primary Open Field Cover Type: Row Cropland (Active)

Estimated Grass Cover (%): None

Estimated Forb Cover (%): None

Estimated Woody Vegetation Cover (%): None

Estimated Bare Ground (%): 90-100%

Estimated Litter Depth (inches): None

Average Vegetation Height (inches): 0 (None)

Dominant Plant Species (Common Names):

Invasive Plant Species (Common Names):

Representative Photo(s):





Field Data Sheet





Field Data Sheet

Notes :

Do you need to report observations of another open field?

Yes



Field Data Sheet

Corresponding Point ID(s): 27

Anthropogenic Disturbance/Management Practices: Traffic Noise

Primary Open Field Cover Type: Row Cropland (Active)

Estimated Grass Cover (%): None

Estimated Forb Cover (%): None

Estimated Woody Vegetation Cover (%): None

Estimated Bare Ground (%): 90-100%

Estimated Litter Depth (inches): None

Average Vegetation Height (inches): 0 (None)

Dominant Plant Species (Common Names):

Invasive Plant Species (Common Names):

Representative Photo(s):





Field Data Sheet





Field Data Sheet

Notes :

Do you need to report observations of another open field?

Yes



Field Data Sheet

Corresponding Point ID(s): 25

Anthropogenic Disturbance/Management Practices: Traffic Noise

Primary Open Field Cover Type: Field Cropland (including hay, wheat, oats, etc.)

Estimated Grass Cover (%): None

Estimated Forb Cover (%): 10-25%

Estimated Woody Vegetation Cover (%): None

Estimated Bare Ground (%): 50-90%

Estimated Litter Depth (inches): None

Average Vegetation Height (inches): 0-2

Dominant Plant Species (Common Names): Vetch

Invasive Plant Species (Common Names):

Representative Photo(s):





Field Data Sheet





Field Data Sheet

Notes :

Do you need to report observations of another open field?

Yes



Field Data Sheet

Corresponding Point ID(s): 26

Anthropogenic Disturbance/Management Practices: Traffic Noise

Primary Open Field Cover Type: Row Cropland (Active)

Estimated Grass Cover (%): None

Estimated Forb Cover (%): None

Estimated Woody Vegetation Cover (%): None

Estimated Bare Ground (%): 90-100%

Estimated Litter Depth (inches): None

Average Vegetation Height (inches): 0 (None)

Dominant Plant Species (Common Names):

Invasive Plant Species (Common Names):

Representative Photo(s):





Field Data Sheet





Field Data Sheet

Notes :

Do you need to report observations of another open field?

Yes



Field Data Sheet

Corresponding Point ID(s): 24

Anthropogenic Disturbance/Management Practices: Traffic Noise

Primary Open Field Cover Type: Row Cropland (Active)

Estimated Grass Cover (%): None

Estimated Forb Cover (%): None

Estimated Woody Vegetation Cover (%): None

Estimated Bare Ground (%): 90-100%

Estimated Litter Depth (inches): None

Average Vegetation Height (inches): 0 (None)

Dominant Plant Species (Common Names):

Invasive Plant Species (Common Names):

Representative Photo(s):





Field Data Sheet





Field Data Sheet

Notes :

Do you need to report observations of another open field?

Yes



Field Data Sheet

Corresponding Point ID(s): 23

Anthropogenic Disturbance/Management Practices: Traffic Noise

Primary Open Field Cover Type: Row Cropland (Active)

Estimated Grass Cover (%): None

Estimated Forb Cover (%): None

Estimated Woody Vegetation Cover (%): None

Estimated Bare Ground (%): 90-100%

Estimated Litter Depth (inches): None

Average Vegetation Height (inches): 0 (None)

Dominant Plant Species (Common Names):

Invasive Plant Species (Common Names):

Representative Photo(s):





Field Data Sheet





Field Data Sheet

Notes :

Do you need to report observations of another open field?

Yes



Field Data Sheet

Corresponding Point ID(s): 22

Anthropogenic Disturbance/Management Practices: Traffic Noise

Primary Open Field Cover Type: Row Cropland (Active)

Estimated Grass Cover (%): None

Estimated Forb Cover (%): None

Estimated Woody Vegetation Cover (%): None

Estimated Bare Ground (%): 90-100%

Estimated Litter Depth (inches): None

Average Vegetation Height (inches): 0 (None)

Dominant Plant Species (Common Names):

Invasive Plant Species (Common Names):

Representative Photo(s):





Field Data Sheet





Field Data Sheet

Notes :

Do you need to report observations of another open field?

Yes



Field Data Sheet

Corresponding Point ID(s): 10.1

Anthropogenic Disturbance/Management Practices: None notable

Primary Open Field Cover Type: Row Cropland (Active)

Estimated Grass Cover (%): None

Estimated Forb Cover (%): None

Estimated Woody Vegetation Cover (%): None

Estimated Bare Ground (%): 90-100%

Estimated Litter Depth (inches): None

Average Vegetation Height (inches): 0 (None)

Dominant Plant Species (Common Names):

Invasive Plant Species (Common Names):

Representative Photo(s):





Field Data Sheet





Field Data Sheet

Notes :

Do you need to report observations of another open field?

Yes



Field Data Sheet

Corresponding Point ID(s): 10

Anthropogenic Disturbance/Management Practices: Farm Equipment Noise

Primary Open Field Cover Type: Row Cropland (Active)

Estimated Grass Cover (%): None

Estimated Forb Cover (%): None

Estimated Woody Vegetation Cover (%): None

Estimated Bare Ground (%): 90-100%

Estimated Litter Depth (inches): None

Average Vegetation Height (inches): 0 (None)

Dominant Plant Species (Common Names):

Invasive Plant Species (Common Names):

Representative Photo(s):





Field Data Sheet





Field Data Sheet

Notes :

Do you need to report observations of another open field?

No



Field Data Sheet

Weather Conditions at End of Survey

Temperature (°F): 67

Wind Speed (mph): 4 – 7 (Light Breeze; Leaves rustle)

Wind Direction: W

Cloud Cover: Overcast (90-100%)

Visibility: Good (10+ miles; clear)

Precipitation: None (Clear)

Weather Notes:

Were there any notable weather events/changes during the survey? No

Bird Observation Summary

Were any Endangered/Threatened Species observed?

No

Were any Species of Special Concern observed?

Yes

Were probable, possible, or confirmed breeding behaviors observed for any Listed Species (Endangered/Threatened/Special Concern)?

No

Were there additional photos documenting birds observed, habitat conditions, and/or other features of interest?

No

Additional Photo(s):

Were any alternate point count survey locations used due to access or visual constraints?

No

Alternate Point Count Survey Locations:



Field Data Sheet

**Incidental bird species observed outside of timed point count surveys
(Alpha Codes or Common Names):**

BOBO, HOWR, AMKE

Overall Survey Notes:

Frequent gunfire from sports club in vicinity at points 22-28. Proceeded with points but gunfire may have impacted avian detection/activity



Field Data Sheet

Breeding Bird Survey

Submitted By: mbaber@edrdpc.com

Submitted Time: May 25, 2023 12:37 PM

Survey Information

Project Name: Agricola Wind

Survey Date: May 25, 2023

Surveyor Name: Max Baber

Points Surveyed: 3-5, 9, 9.1, 29-42

Survey Start Time: 05:19

Survey End Time: 10:40

Weather Conditions at Start of Survey

Temperature (°F): 35

Wind Speed (mph): 1 – 3 (Light Air; Smoke drifts)

Wind Direction: N

Cloud Cover: None (Clear)

Visibility: Good (10+ miles; clear)

Precipitation: None (Clear)

Weather Notes:



Field Data Sheet

Open Field Condition Observations

Corresponding Point ID(s): 40.1

Anthropogenic Disturbance/Management Practices: None notable

Primary Open Field Cover Type: Row Cropland (Active)

Estimated Grass Cover (%): None

Estimated Forb Cover (%): 1-10%

Estimated Woody Vegetation Cover (%): None

Estimated Bare Ground (%): 90-100%

Estimated Litter Depth (inches): None

Average Vegetation Height (inches): 4-6

Dominant Plant Species (Common Names): Mustard, dock

Invasive Plant Species (Common Names):

Representative Photo(s):





Field Data Sheet





Field Data Sheet

Notes :

Do you need to report observations of another open field?

Yes



Field Data Sheet

Corresponding Point ID(s): 42

Anthropogenic Disturbance/Management Practices: None notable

Primary Open Field Cover Type: Row Cropland (Active)

Estimated Grass Cover (%): 1-10%

Estimated Forb Cover (%): 1-10%

Estimated Woody Vegetation Cover (%): None

Estimated Bare Ground (%): 90-100%

Estimated Litter Depth (inches): None

Average Vegetation Height (inches): 2-4

Dominant Plant Species (Common Names): Dandelion

Invasive Plant Species (Common Names):

Representative Photo(s):





Field Data Sheet





Field Data Sheet

Notes :

Do you need to report observations of another open field?

Yes



Field Data Sheet

Corresponding Point ID(s): 41

Anthropogenic Disturbance/Management Practices: None notable

Primary Open Field Cover Type: Row Cropland (Active)

Estimated Grass Cover (%): None

Estimated Forb Cover (%): 1-10%

Estimated Woody Vegetation Cover (%): None

Estimated Bare Ground (%): 90-100%

Estimated Litter Depth (inches): None

Average Vegetation Height (inches): 2-4

Dominant Plant Species (Common Names): Goldenrod

Invasive Plant Species (Common Names):

Representative Photo(s):





Field Data Sheet





Field Data Sheet

Notes :

Do you need to report observations of another open field?

Yes



Field Data Sheet

Corresponding Point ID(s): 40

Anthropogenic Disturbance/Management Practices:

Primary Open Field Cover Type: Row Cropland (Active)

Estimated Grass Cover (%): None

Estimated Forb Cover (%): None

Estimated Woody Vegetation Cover (%): None

Estimated Bare Ground (%): 90-100%

Estimated Litter Depth (inches): None

Average Vegetation Height (inches): 0 (None)

Dominant Plant Species (Common Names):

Invasive Plant Species (Common Names):

Representative Photo(s):





Field Data Sheet





Field Data Sheet

Notes :

Do you need to report observations of another open field?

Yes



Field Data Sheet

Corresponding Point ID(s): 33

Anthropogenic Disturbance/Management Practices: None notable

Primary Open Field Cover Type: Row Cropland (Active)

Estimated Grass Cover (%): 1-10%

Estimated Forb Cover (%): None

Estimated Woody Vegetation Cover (%): None

Estimated Bare Ground (%): 90-100%

Estimated Litter Depth (inches): None

Average Vegetation Height (inches): 0-2

Dominant Plant Species (Common Names): Corn

Invasive Plant Species (Common Names):

Representative Photo(s):





Field Data Sheet





Field Data Sheet

Notes :

Do you need to report observations of another open field?

Yes



Field Data Sheet

Corresponding Point ID(s): 32

Anthropogenic Disturbance/Management Practices: Traffic Noise

Primary Open Field Cover Type: Row Cropland (Active)

Estimated Grass Cover (%): 1-10%

Estimated Forb Cover (%): None

Estimated Woody Vegetation Cover (%): None

Estimated Bare Ground (%): 90-100%

Estimated Litter Depth (inches): None

Average Vegetation Height (inches): 0-2

Dominant Plant Species (Common Names): Corn

Invasive Plant Species (Common Names):

Representative Photo(s):





Field Data Sheet





Field Data Sheet

Notes :

Do you need to report observations of another open field?

Yes



Field Data Sheet

Corresponding Point ID(s): 31

Anthropogenic Disturbance/Management Practices: None notable

Primary Open Field Cover Type: Row Cropland (Active)

Estimated Grass Cover (%): 1-10%

Estimated Forb Cover (%): None

Estimated Woody Vegetation Cover (%): None

Estimated Bare Ground (%): 90-100%

Estimated Litter Depth (inches): None

Average Vegetation Height (inches): 0-2

Dominant Plant Species (Common Names): Corn

Invasive Plant Species (Common Names):

Representative Photo(s):





Field Data Sheet





Field Data Sheet

Notes :

Do you need to report observations of another open field?

Yes



Field Data Sheet

Corresponding Point ID(s): 36

Anthropogenic Disturbance/Management Practices: Farm Equipment Noise

Primary Open Field Cover Type: Field Cropland (including hay, wheat, oats, etc.)

Estimated Grass Cover (%): 10-25%

Estimated Forb Cover (%): 50-90%

Estimated Woody Vegetation Cover (%): None

Estimated Bare Ground (%): None

Estimated Litter Depth (inches): None

Average Vegetation Height (inches): 18-24

Dominant Plant Species (Common Names): Vetch, wheat

Invasive Plant Species (Common Names):

Representative Photo(s):





Field Data Sheet





Field Data Sheet

Notes :

Do you need to report observations of another open field?

Yes



Field Data Sheet

Corresponding Point ID(s): 37

Anthropogenic Disturbance/Management Practices: Farm Equipment Noise

Primary Open Field Cover Type: Field Cropland (including hay, wheat, oats, etc.)

Estimated Grass Cover (%): 1-10%

Estimated Forb Cover (%): 90-100%

Estimated Woody Vegetation Cover (%): None

Estimated Bare Ground (%): None

Estimated Litter Depth (inches): None

Average Vegetation Height (inches): 18-24

Dominant Plant Species (Common Names): Vetch

Invasive Plant Species (Common Names):

Representative Photo(s):





Field Data Sheet





Field Data Sheet

Notes :

Do you need to report observations of another open field?

Yes



Field Data Sheet

Corresponding Point ID(s): 38

Anthropogenic Disturbance/Management Practices: Farm Equipment Noise

Primary Open Field Cover Type: Field Cropland (including hay, wheat, oats, etc.)

Estimated Grass Cover (%): 1-10%

Estimated Forb Cover (%): 90-100%

Estimated Woody Vegetation Cover (%): None

Estimated Bare Ground (%): None

Estimated Litter Depth (inches): None

Average Vegetation Height (inches): 0 (None)

Dominant Plant Species (Common Names): Vetch

Invasive Plant Species (Common Names):

Representative Photo(s):





Field Data Sheet





Field Data Sheet

Notes :

Do you need to report observations of another open field?

Yes



Field Data Sheet

Corresponding Point ID(s): 39

Anthropogenic Disturbance/Management Practices: None notable

Primary Open Field Cover Type: Field Cropland (including hay, wheat, oats, etc.)

Estimated Grass Cover (%): 25-50%

Estimated Forb Cover (%): 50-90%

Estimated Woody Vegetation Cover (%): None

Estimated Bare Ground (%): None

Estimated Litter Depth (inches): 0-1"

Average Vegetation Height (inches): 18-24

Dominant Plant Species (Common Names): Vetch, grasses

Invasive Plant Species (Common Names): Dandelion

Representative Photo(s):





Field Data Sheet





Field Data Sheet

Notes :

Do you need to report observations of another open field?

Yes



Field Data Sheet

Corresponding Point ID(s): 34

Anthropogenic Disturbance/Management Practices: Traffic Noise

Primary Open Field Cover Type: Field Cropland (including hay, wheat, oats, etc.)

Estimated Grass Cover (%): 25-50%

Estimated Forb Cover (%): 50-90%

Estimated Woody Vegetation Cover (%): None

Estimated Bare Ground (%): None

Estimated Litter Depth (inches): 0-1"

Average Vegetation Height (inches): 18-24

Dominant Plant Species (Common Names): Vetch, grasses

Invasive Plant Species (Common Names):

Representative Photo(s):





Field Data Sheet





Field Data Sheet

Notes :

Do you need to report observations of another open field?

Yes



Field Data Sheet

Corresponding Point ID(s): 35

Anthropogenic Disturbance/Management Practices: Traffic Noise

Primary Open Field Cover Type: Row Cropland (Active)

Estimated Grass Cover (%): 1-10%

Estimated Forb Cover (%): None

Estimated Woody Vegetation Cover (%): None

Estimated Bare Ground (%): 90-100%

Estimated Litter Depth (inches): None

Average Vegetation Height (inches): 0 (None)

Dominant Plant Species (Common Names):

Invasive Plant Species (Common Names):

Representative Photo(s):





Field Data Sheet





Field Data Sheet

Notes :

Do you need to report observations of another open field?

Yes



Field Data Sheet

Corresponding Point ID(s): 30

Anthropogenic Disturbance/Management Practices: Traffic Noise

Primary Open Field Cover Type: Field Cropland (including hay, wheat, oats, etc.)

Estimated Grass Cover (%): 1-10%

Estimated Forb Cover (%): 50-90%

Estimated Woody Vegetation Cover (%): None

Estimated Bare Ground (%): None

Estimated Litter Depth (inches): None

Average Vegetation Height (inches): 24-30

Dominant Plant Species (Common Names): Vetch

Invasive Plant Species (Common Names):

Representative Photo(s):





Field Data Sheet





Field Data Sheet

Notes :

Do you need to report observations of another open field?

Yes



Field Data Sheet

Corresponding Point ID(s): 29

Anthropogenic Disturbance/Management Practices: Traffic Noise

Primary Open Field Cover Type: Field Cropland (including hay, wheat, oats, etc.)

Estimated Grass Cover (%): 25-50%

Estimated Forb Cover (%): 50-90%

Estimated Woody Vegetation Cover (%): None

Estimated Bare Ground (%): None

Estimated Litter Depth (inches): 0-1"

Average Vegetation Height (inches): 24-30

Dominant Plant Species (Common Names): Vetch, grasses

Invasive Plant Species (Common Names): Dandelion

Representative Photo(s):





Field Data Sheet





Field Data Sheet

Notes :

Do you need to report observations of another open field?

Yes



Field Data Sheet

Corresponding Point ID(s): 9

Anthropogenic Disturbance/Management Practices: None notable

Primary Open Field Cover Type: Row Cropland (Active)

Estimated Grass Cover (%): None

Estimated Forb Cover (%): None

Estimated Woody Vegetation Cover (%): None

Estimated Bare Ground (%): 90-100%

Estimated Litter Depth (inches): None

Average Vegetation Height (inches): 0 (None)

Dominant Plant Species (Common Names):

Invasive Plant Species (Common Names):

Representative Photo(s):





Field Data Sheet





Field Data Sheet

Notes :

Do you need to report observations of another open field?

Yes



Field Data Sheet

Corresponding Point ID(s): 9.1

Anthropogenic Disturbance/Management Practices: None notable

Primary Open Field Cover Type: Row Cropland (Active)

Estimated Grass Cover (%): None

Estimated Forb Cover (%): None

Estimated Woody Vegetation Cover (%): None

Estimated Bare Ground (%): 90-100%

Estimated Litter Depth (inches): None

Average Vegetation Height (inches): 0 (None)

Dominant Plant Species (Common Names):

Invasive Plant Species (Common Names):

Representative Photo(s):





Field Data Sheet





Field Data Sheet

Notes :

Do you need to report observations of another open field?

Yes



Field Data Sheet

Corresponding Point ID(s): 3

Anthropogenic Disturbance/Management Practices: Traffic Noise

Primary Open Field Cover Type: Row Cropland (Active)

Estimated Grass Cover (%): 1-10%

Estimated Forb Cover (%): 1-10%

Estimated Woody Vegetation Cover (%): None

Estimated Bare Ground (%): 90-100%

Estimated Litter Depth (inches): None

Average Vegetation Height (inches): 0-2

Dominant Plant Species (Common Names): Vetch

Invasive Plant Species (Common Names):

Representative Photo(s):





Field Data Sheet





Field Data Sheet

Notes :

Do you need to report observations of another open field?

Yes



Field Data Sheet

Corresponding Point ID(s): 4

Anthropogenic Disturbance/Management Practices: Traffic Noise

Primary Open Field Cover Type: Row Cropland (Active)

Estimated Grass Cover (%): 1-10%

Estimated Forb Cover (%): 1-10%

Estimated Woody Vegetation Cover (%): None

Estimated Bare Ground (%): 90-100%

Estimated Litter Depth (inches): None

Average Vegetation Height (inches): 2-4

Dominant Plant Species (Common Names): Vetch

Invasive Plant Species (Common Names):

Representative Photo(s):





Field Data Sheet





Field Data Sheet

Notes :

Do you need to report observations of another open field?

Yes



Field Data Sheet

Corresponding Point ID(s): 5

Anthropogenic Disturbance/Management Practices: Traffic Noise

Primary Open Field Cover Type: Row Cropland (Active)

Estimated Grass Cover (%): None

Estimated Forb Cover (%): 1-10%

Estimated Woody Vegetation Cover (%): None

Estimated Bare Ground (%): 90-100%

Estimated Litter Depth (inches): None

Average Vegetation Height (inches): 0-2

Dominant Plant Species (Common Names): Vetch

Invasive Plant Species (Common Names):

Representative Photo(s):





Field Data Sheet





Field Data Sheet

Notes :

Do you need to report observations of another open field?

No



Field Data Sheet

Weather Conditions at End of Survey

Temperature (°F): 51

Wind Speed (mph): 8 – 12 (Gentle Breeze; Leaves and Small twigs in constant motion)

Wind Direction: N

Cloud Cover: Mostly Cloudy (50% - 90%)

Visibility: Good (10+ miles; clear)

Precipitation: None (Clear)

Weather Notes:

Were there any notable weather events/changes during the survey? No

Bird Observation Summary

Were any Endangered/Threatened Species observed?

No

Were any Species of Special Concern observed?

Yes

Were probable, possible, or confirmed breeding behaviors observed for any Listed Species (Endangered/Threatened/Special Concern)?

No

Were there additional photos documenting birds observed, habitat conditions, and/or other features of interest?

No

Additional Photo(s):

Were any alternate point count survey locations used due to access or visual constraints?

No



Field Data Sheet

Alternate Point Count Survey Locations:

Incidental bird species observed outside of timed point count surveys (Alpha Codes or Common Names):

ROPI

Overall Survey Notes:



Field Data Sheet

Breeding Bird Survey

Submitted By: mbaber@edrdpc.com

Submitted Time: May 26, 2023 3:11 PM

Survey Information

Project Name: Agricola Wind

Survey Date: May 26, 2023

Surveyor Name: Max Baber

Points Surveyed: 1,2,6,7,11-21

Survey Start Time: 05:35

Survey End Time: 10:30

Weather Conditions at Start of Survey

Temperature (°F): 36

Wind Speed (mph): 1 – 3 (Light Air; Smoke drifts)

Wind Direction: N

Cloud Cover: None (Clear)

Visibility: Good (10+ miles; clear)

Precipitation: None (Clear)

Weather Notes:



Field Data Sheet

Open Field Condition Observations

Corresponding Point ID(s): 20

Anthropogenic Disturbance/Management Practices: None notable

Primary Open Field Cover Type: Field Cropland (including hay, wheat, oats, etc.)

Estimated Grass Cover (%): 50-90%

Estimated Forb Cover (%): None

Estimated Woody Vegetation Cover (%): None

Estimated Bare Ground (%): 10-25%

Estimated Litter Depth (inches): None

Average Vegetation Height (inches): 24-30

Dominant Plant Species (Common Names): Wheat

Invasive Plant Species (Common Names):

Representative Photo(s):





Field Data Sheet





Field Data Sheet

Notes :

Do you need to report observations of another open field?

Yes



Field Data Sheet

Corresponding Point ID(s): 21

Anthropogenic Disturbance/Management Practices: None notable

Primary Open Field Cover Type: Field Cropland (including hay, wheat, oats, etc.)

Estimated Grass Cover (%): 50-90%

Estimated Forb Cover (%): None

Estimated Woody Vegetation Cover (%): None

Estimated Bare Ground (%): 10-25%

Estimated Litter Depth (inches): None

Average Vegetation Height (inches): 48-54

Dominant Plant Species (Common Names): Wheat

Invasive Plant Species (Common Names):

Representative Photo(s):





Field Data Sheet





Field Data Sheet

Notes :

Do you need to report observations of another open field?

Yes



Field Data Sheet

Corresponding Point ID(s): 19

Anthropogenic Disturbance/Management Practices: None notable

Primary Open Field Cover Type: Field Cropland (including hay, wheat, oats, etc.)

Estimated Grass Cover (%): 50-90%

Estimated Forb Cover (%): None

Estimated Woody Vegetation Cover (%): None

Estimated Bare Ground (%): 1-10%

Estimated Litter Depth (inches): None

Average Vegetation Height (inches): 30-36

Dominant Plant Species (Common Names): Wheat

Invasive Plant Species (Common Names):

Representative Photo(s):





Field Data Sheet





Field Data Sheet

Notes :

Do you need to report observations of another open field?

Yes



Field Data Sheet

Corresponding Point ID(s): 18

Anthropogenic Disturbance/Management Practices: None notable

Primary Open Field Cover Type: Row Cropland (Active)

Estimated Grass Cover (%): None

Estimated Forb Cover (%): 1-10%

Estimated Woody Vegetation Cover (%): None

Estimated Bare Ground (%): 90-100%

Estimated Litter Depth (inches): None

Average Vegetation Height (inches): 0-2

Dominant Plant Species (Common Names):

Invasive Plant Species (Common Names):

Representative Photo(s):





Field Data Sheet





Field Data Sheet

Notes :

Do you need to report observations of another open field?

Yes



Field Data Sheet

Corresponding Point ID(s): 17

Anthropogenic Disturbance/Management Practices: None notable

Primary Open Field Cover Type: Field Cropland (including hay, wheat, oats, etc.)

Estimated Grass Cover (%): 25-50%

Estimated Forb Cover (%): 50-90%

Estimated Woody Vegetation Cover (%): None

Estimated Bare Ground (%): None

Estimated Litter Depth (inches): 0-1"

Average Vegetation Height (inches): 18-24

Dominant Plant Species (Common Names): Grasses, vetch

Invasive Plant Species (Common Names):

Representative Photo(s):





Field Data Sheet





Field Data Sheet

Notes :

Do you need to report observations of another open field?

Yes



Field Data Sheet

Corresponding Point ID(s): 16

Anthropogenic Disturbance/Management Practices: None notable

Primary Open Field Cover Type: Field Cropland (including hay, wheat, oats, etc.)

Estimated Grass Cover (%): 50-90%

Estimated Forb Cover (%): None

Estimated Woody Vegetation Cover (%): None

Estimated Bare Ground (%): 1-10%

Estimated Litter Depth (inches): None

Average Vegetation Height (inches): 36-42

Dominant Plant Species (Common Names): Wheat

Invasive Plant Species (Common Names):

Representative Photo(s):





Field Data Sheet





Field Data Sheet

Notes :

Do you need to report observations of another open field?

Yes



Field Data Sheet

Corresponding Point ID(s): 12

Anthropogenic Disturbance/Management Practices: None notable

Primary Open Field Cover Type: Row Cropland (Fallow)

Estimated Grass Cover (%): 50-90%

Estimated Forb Cover (%): 25-50%

Estimated Woody Vegetation Cover (%): None

Estimated Bare Ground (%): None

Estimated Litter Depth (inches): 0-1"

Average Vegetation Height (inches): 18-24

Dominant Plant Species (Common Names): Grasses, clover

Invasive Plant Species (Common Names):

Representative Photo(s):





Field Data Sheet





Field Data Sheet

Notes :

Do you need to report observations of another open field?

Yes



Field Data Sheet

Corresponding Point ID(s): 11

Anthropogenic Disturbance/Management Practices: None notable

Primary Open Field Cover Type: Field Cropland (including hay, wheat, oats, etc.)

Estimated Grass Cover (%): 50-90%

Estimated Forb Cover (%): 50-90%

Estimated Woody Vegetation Cover (%): None

Estimated Bare Ground (%): None

Estimated Litter Depth (inches): 1-3"

Average Vegetation Height (inches): 18-24

Dominant Plant Species (Common Names): Grasses, clover

Invasive Plant Species (Common Names):

Representative Photo(s):





Field Data Sheet





Field Data Sheet

Notes :

Do you need to report observations of another open field?

Yes



Field Data Sheet

Corresponding Point ID(s): 13

Anthropogenic Disturbance/Management Practices: None notable

Primary Open Field Cover Type: Field Cropland (including hay, wheat, oats, etc.)

Estimated Grass Cover (%): 50-90%

Estimated Forb Cover (%): 25-50%

Estimated Woody Vegetation Cover (%): None

Estimated Bare Ground (%): None

Estimated Litter Depth (inches): 0-1"

Average Vegetation Height (inches): 18-24

Dominant Plant Species (Common Names): Grasses, clover

Invasive Plant Species (Common Names):

Representative Photo(s):





Field Data Sheet





Field Data Sheet

Notes :

Do you need to report observations of another open field?

Yes



Field Data Sheet

Corresponding Point ID(s): 14

Anthropogenic Disturbance/Management Practices: None notable

Primary Open Field Cover Type: Field Cropland (including hay, wheat, oats, etc.)

Estimated Grass Cover (%): 50-90%

Estimated Forb Cover (%): 25-50%

Estimated Woody Vegetation Cover (%): None

Estimated Bare Ground (%): None

Estimated Litter Depth (inches): 0-1"

Average Vegetation Height (inches): 12-18

Dominant Plant Species (Common Names): Grasses, clover

Invasive Plant Species (Common Names):

Representative Photo(s):





Field Data Sheet





Field Data Sheet

Notes :

Do you need to report observations of another open field?

Yes



Field Data Sheet

Corresponding Point ID(s): 15

Anthropogenic Disturbance/Management Practices: None notable

Primary Open Field Cover Type: Field Cropland (including hay, wheat, oats, etc.)

Estimated Grass Cover (%): 25-50%

Estimated Forb Cover (%): 50-90%

Estimated Woody Vegetation Cover (%): None

Estimated Bare Ground (%): None

Estimated Litter Depth (inches): 0-1"

Average Vegetation Height (inches): 18-24

Dominant Plant Species (Common Names): Grasses, clover

Invasive Plant Species (Common Names):

Representative Photo(s):





Field Data Sheet





Field Data Sheet

Notes :

Do you need to report observations of another open field?

Yes



Field Data Sheet

Corresponding Point ID(s): 2

Anthropogenic Disturbance/Management Practices: None notable

Primary Open Field Cover Type: Field Cropland (including hay, wheat, oats, etc.)

Estimated Grass Cover (%): None

Estimated Forb Cover (%): 90-100%

Estimated Woody Vegetation Cover (%): None

Estimated Bare Ground (%): None

Estimated Litter Depth (inches): None

Average Vegetation Height (inches): 18-24

Dominant Plant Species (Common Names): Vetch

Invasive Plant Species (Common Names):

Representative Photo(s):





Field Data Sheet





Field Data Sheet

Notes :

Do you need to report observations of another open field?

Yes



Field Data Sheet

Corresponding Point ID(s): 1

Anthropogenic Disturbance/Management Practices: None notable

Primary Open Field Cover Type: Field Cropland (including hay, wheat, oats, etc.)

Estimated Grass Cover (%): None

Estimated Forb Cover (%): 90-100%

Estimated Woody Vegetation Cover (%): None

Estimated Bare Ground (%): None

Estimated Litter Depth (inches): None

Average Vegetation Height (inches): 18-24

Dominant Plant Species (Common Names): Vetch

Invasive Plant Species (Common Names):

Representative Photo(s):





Field Data Sheet





Field Data Sheet

Notes :

Do you need to report observations of another open field?

Yes



Field Data Sheet

Corresponding Point ID(s): 6

Anthropogenic Disturbance/Management Practices: None notable

Primary Open Field Cover Type: Row Cropland (Active)

Estimated Grass Cover (%): 1-10%

Estimated Forb Cover (%): None

Estimated Woody Vegetation Cover (%): None

Estimated Bare Ground (%): 90-100%

Estimated Litter Depth (inches): None

Average Vegetation Height (inches): 0-2

Dominant Plant Species (Common Names): Corn

Invasive Plant Species (Common Names):

Representative Photo(s):





Field Data Sheet





Field Data Sheet

Notes :

Do you need to report observations of another open field?

Yes



Field Data Sheet

Corresponding Point ID(s): 7

Anthropogenic Disturbance/Management Practices: None notable

Primary Open Field Cover Type: Field Cropland (including hay, wheat, oats, etc.)

Estimated Grass Cover (%): 50-90%

Estimated Forb Cover (%): 90-100%

Estimated Woody Vegetation Cover (%): None

Estimated Bare Ground (%): None

Estimated Litter Depth (inches): 0-1"

Average Vegetation Height (inches): 2-4

Dominant Plant Species (Common Names): Vetch

Invasive Plant Species (Common Names):

Representative Photo(s):





Field Data Sheet





Field Data Sheet

Notes :

Do you need to report observations of another open field?

No



Field Data Sheet

Weather Conditions at End of Survey

Temperature (°F): 57

Wind Speed (mph): 4 – 7 (Light Breeze; Leaves rustle)

Wind Direction: NW

Cloud Cover: None (Clear)

Visibility: Good (10+ miles; clear)

Precipitation: None (Clear)

Weather Notes:

Were there any notable weather events/changes during the survey? No

Bird Observation Summary

Were any Endangered/Threatened Species observed?

No

Were any Species of Special Concern observed?

Yes

Were probable, possible, or confirmed breeding behaviors observed for any Listed Species (Endangered/Threatened/Special Concern)?

No

Were there additional photos documenting birds observed, habitat conditions, and/or other features of interest?

No

Additional Photo(s):

Were any alternate point count survey locations used due to access or visual constraints?

No

Alternate Point Count Survey Locations:



Field Data Sheet

**Incidental bird species observed outside of timed point count surveys
(Alpha Codes or Common Names):**

RTHA, GBHE, ROPI

Overall Survey Notes:



Field Data Sheet

Breeding Bird Survey

Submitted By: bsmith@edrdpc.com

Submitted Time: May 26, 2023 10:18 AM

Survey Information

Project Name: Agricola Wind

Survey Date: May 26, 2023

Surveyor Name: Brooke Smith, Abby Thompson

Points Surveyed: 43-58.2

Survey Start Time: 05:13

Survey End Time: 10:30

Weather Conditions at Start of Survey

Temperature (°F): 35

Wind Speed (mph): 0 – 1 (Calm; Smoke rises vertically)

Wind Direction: ENE

Cloud Cover: None (Clear)

Visibility: Good (10+ miles; clear)

Precipitation: None (Clear)

Weather Notes:



Field Data Sheet

Open Field Condition Observations

Corresponding Point ID(s): 58

Anthropogenic Disturbance/Management Practices: Traffic Noise

Primary Open Field Cover Type: Field Cropland (including hay, wheat, oats, etc.)

Estimated Grass Cover (%): 90-100%

Estimated Forb Cover (%): None

Estimated Woody Vegetation Cover (%): None

Estimated Bare Ground (%): None

Estimated Litter Depth (inches): None

Average Vegetation Height (inches): 4-6

Dominant Plant Species (Common Names): Grass

Invasive Plant Species (Common Names):

Representative Photo(s):





Field Data Sheet





Field Data Sheet

Notes :

Do you need to report observations of another open field?

Yes



Field Data Sheet

Corresponding Point ID(s): 57

Anthropogenic Disturbance/Management Practices: None notable

Primary Open Field Cover Type: Field Cropland (including hay, wheat, oats, etc.)

Estimated Grass Cover (%): None

Estimated Forb Cover (%): None

Estimated Woody Vegetation Cover (%): None

Estimated Bare Ground (%): 90-100%

Estimated Litter Depth (inches): 0-1"

Average Vegetation Height (inches): 0 (None)

Dominant Plant Species (Common Names): None

Invasive Plant Species (Common Names):

Representative Photo(s):





Field Data Sheet





Field Data Sheet

Notes :

Do you need to report observations of another open field?

Yes



Field Data Sheet

Corresponding Point ID(s): 56

Anthropogenic Disturbance/Management Practices: None notable

Primary Open Field Cover Type: Field Cropland (including hay, wheat, oats, etc.)

Estimated Grass Cover (%): None

Estimated Forb Cover (%): None

Estimated Woody Vegetation Cover (%): None

Estimated Bare Ground (%): 90-100%

Estimated Litter Depth (inches): 0-1"

Average Vegetation Height (inches): 0 (None)

Dominant Plant Species (Common Names): None

Invasive Plant Species (Common Names):

Representative Photo(s):





Field Data Sheet





Field Data Sheet

Notes :

Do you need to report observations of another open field?

Yes



Field Data Sheet

Corresponding Point ID(s): 53

Anthropogenic Disturbance/Management Practices: Traffic Noise

Primary Open Field Cover Type: Row Cropland (Active)

Estimated Grass Cover (%): None

Estimated Forb Cover (%): None

Estimated Woody Vegetation Cover (%): None

Estimated Bare Ground (%): 90-100%

Estimated Litter Depth (inches): None

Average Vegetation Height (inches): 0 (None)

Dominant Plant Species (Common Names): None

Invasive Plant Species (Common Names):

Representative Photo(s):





Field Data Sheet





Field Data Sheet

Notes :

Do you need to report observations of another open field?

Yes



Field Data Sheet

Corresponding Point ID(s): 52

Anthropogenic Disturbance/Management Practices: Traffic Noise

Primary Open Field Cover Type: Row Cropland (Active)

Estimated Grass Cover (%): None

Estimated Forb Cover (%): None

Estimated Woody Vegetation Cover (%): None

Estimated Bare Ground (%): 90-100%

Estimated Litter Depth (inches): 0-1"

Average Vegetation Height (inches): 0 (None)

Dominant Plant Species (Common Names): None

Invasive Plant Species (Common Names):

Representative Photo(s):





Field Data Sheet





Field Data Sheet

Notes :

Do you need to report observations of another open field?

Yes



Field Data Sheet

Corresponding Point ID(s): 58.1

Anthropogenic Disturbance/Management Practices: Traffic Noise

Primary Open Field Cover Type: Field Cropland (including hay, wheat, oats, etc.)

Estimated Grass Cover (%): 90-100%

Estimated Forb Cover (%): None

Estimated Woody Vegetation Cover (%): None

Estimated Bare Ground (%): None

Estimated Litter Depth (inches):

Average Vegetation Height (inches): 18-24

Dominant Plant Species (Common Names): Wheat

Invasive Plant Species (Common Names):

Representative Photo(s):





Field Data Sheet





Field Data Sheet

Notes :

Do you need to report observations of another open field?

Yes



Field Data Sheet

Corresponding Point ID(s): 58.2

Anthropogenic Disturbance/Management Practices: Traffic Noise

Primary Open Field Cover Type: Field Cropland (including hay, wheat, oats, etc.)

Estimated Grass Cover (%): 90-100%

Estimated Forb Cover (%): None

Estimated Woody Vegetation Cover (%): None

Estimated Bare Ground (%): None

Estimated Litter Depth (inches): None

Average Vegetation Height (inches): 18-24

Dominant Plant Species (Common Names): Wheat

Invasive Plant Species (Common Names):

Representative Photo(s):





Field Data Sheet





Field Data Sheet

Notes :

Do you need to report observations of another open field?

Yes



Field Data Sheet

Corresponding Point ID(s): 55

Anthropogenic Disturbance/Management Practices: None notable

Primary Open Field Cover Type: Row Cropland (Active)

Estimated Grass Cover (%): None

Estimated Forb Cover (%): None

Estimated Woody Vegetation Cover (%): None

Estimated Bare Ground (%): 90-100%

Estimated Litter Depth (inches): 0-1"

Average Vegetation Height (inches):

Dominant Plant Species (Common Names): None

Invasive Plant Species (Common Names):

Representative Photo(s):





Field Data Sheet





Field Data Sheet

Notes :

Do you need to report observations of another open field?

Yes



Field Data Sheet

Corresponding Point ID(s): 54

Anthropogenic Disturbance/Management Practices: None notable

Primary Open Field Cover Type: Row Cropland (Active)

Estimated Grass Cover (%): None

Estimated Forb Cover (%): None

Estimated Woody Vegetation Cover (%): None

Estimated Bare Ground (%): 90-100%

Estimated Litter Depth (inches): None

Average Vegetation Height (inches): 0 (None)

Dominant Plant Species (Common Names): None

Invasive Plant Species (Common Names):

Representative Photo(s):





Field Data Sheet





Field Data Sheet

Notes :

Do you need to report observations of another open field?

Yes



Field Data Sheet

Corresponding Point ID(s): 55.1

Anthropogenic Disturbance/Management Practices: None notable

Primary Open Field Cover Type: Pastureland

Estimated Grass Cover (%): 90-100%

Estimated Forb Cover (%): None

Estimated Woody Vegetation Cover (%): None

Estimated Bare Ground (%): None

Estimated Litter Depth (inches): None

Average Vegetation Height (inches): 18-24

Dominant Plant Species (Common Names): Grass and dandelion

Invasive Plant Species (Common Names):

Representative Photo(s):





Field Data Sheet





Field Data Sheet

Notes :

Do you need to report observations of another open field?

Yes



Field Data Sheet

Corresponding Point ID(s): 55.2

Anthropogenic Disturbance/Management Practices: None notable

Primary Open Field Cover Type: Row Cropland (Active)

Estimated Grass Cover (%): 25-50%

Estimated Forb Cover (%): None

Estimated Woody Vegetation Cover (%): None

Estimated Bare Ground (%): 25-50%

Estimated Litter Depth (inches): None

Average Vegetation Height (inches): 2-4

Dominant Plant Species (Common Names): Grass

Invasive Plant Species (Common Names):

Representative Photo(s):





Field Data Sheet





Field Data Sheet

Notes :

Do you need to report observations of another open field?

Yes



Field Data Sheet

Corresponding Point ID(s): 51

Anthropogenic Disturbance/Management Practices: None notable

Primary Open Field Cover Type: Field Cropland (including hay, wheat, oats, etc.)

Estimated Grass Cover (%): 90-100%

Estimated Forb Cover (%): None

Estimated Woody Vegetation Cover (%): None

Estimated Bare Ground (%): None

Estimated Litter Depth (inches): None

Average Vegetation Height (inches): 18-24

Dominant Plant Species (Common Names): Grass and dandelions

Invasive Plant Species (Common Names):

Representative Photo(s):





Field Data Sheet





Field Data Sheet

Notes :

Do you need to report observations of another open field?

Yes



Field Data Sheet

Corresponding Point ID(s): 49

Anthropogenic Disturbance/Management Practices: None notable

Primary Open Field Cover Type: Row Cropland (Active)

Estimated Grass Cover (%): None

Estimated Forb Cover (%): None

Estimated Woody Vegetation Cover (%): None

Estimated Bare Ground (%): None

Estimated Litter Depth (inches): None

Average Vegetation Height (inches): 0 (None)

Dominant Plant Species (Common Names): None

Invasive Plant Species (Common Names):

Representative Photo(s):





Field Data Sheet





Field Data Sheet

Notes :

Do you need to report observations of another open field?

Yes



Field Data Sheet

Corresponding Point ID(s): 50

Anthropogenic Disturbance/Management Practices: None notable

Primary Open Field Cover Type: Row Cropland (Active)

Estimated Grass Cover (%): None

Estimated Forb Cover (%): None

Estimated Woody Vegetation Cover (%): None

Estimated Bare Ground (%): None

Estimated Litter Depth (inches): None

Average Vegetation Height (inches): 0 (None)

Dominant Plant Species (Common Names): None

Invasive Plant Species (Common Names):

Representative Photo(s):





Field Data Sheet





Field Data Sheet

Notes :

Do you need to report observations of another open field?

Yes



Field Data Sheet

Corresponding Point ID(s): 43

Anthropogenic Disturbance/Management Practices: None notable

Primary Open Field Cover Type: Field Cropland (including hay, wheat, oats, etc.)

Estimated Grass Cover (%): 90-100%

Estimated Forb Cover (%): None

Estimated Woody Vegetation Cover (%): None

Estimated Bare Ground (%): None

Estimated Litter Depth (inches): None

Average Vegetation Height (inches): 48-54

Dominant Plant Species (Common Names): Wheat

Invasive Plant Species (Common Names):

Representative Photo(s):





Field Data Sheet





Field Data Sheet

Notes :

Do you need to report observations of another open field?

Yes



Field Data Sheet

Corresponding Point ID(s): 44

Anthropogenic Disturbance/Management Practices: None notable

Primary Open Field Cover Type: Field Cropland (including hay, wheat, oats, etc.)

Estimated Grass Cover (%): 90-100%

Estimated Forb Cover (%): None

Estimated Woody Vegetation Cover (%): None

Estimated Bare Ground (%): None

Estimated Litter Depth (inches): None

Average Vegetation Height (inches): 30-36

Dominant Plant Species (Common Names): Wheat

Invasive Plant Species (Common Names):

Representative Photo(s):





Field Data Sheet





Field Data Sheet

Notes :

Do you need to report observations of another open field?

Yes



Field Data Sheet

Corresponding Point ID(s): 46

Anthropogenic Disturbance/Management Practices: None notable

Primary Open Field Cover Type: Field Cropland (including hay, wheat, oats, etc.)

Estimated Grass Cover (%): 90-100%

Estimated Forb Cover (%): None

Estimated Woody Vegetation Cover (%): None

Estimated Bare Ground (%): None

Estimated Litter Depth (inches): None

Average Vegetation Height (inches): 48-54

Dominant Plant Species (Common Names): Wheat

Invasive Plant Species (Common Names):

Representative Photo(s):





Field Data Sheet





Field Data Sheet

Notes :

Do you need to report observations of another open field?

Yes



Field Data Sheet

Corresponding Point ID(s): 47

Anthropogenic Disturbance/Management Practices: None notable

Primary Open Field Cover Type: Row Cropland (Active)

Estimated Grass Cover (%): None

Estimated Forb Cover (%): None

Estimated Woody Vegetation Cover (%): None

Estimated Bare Ground (%): 90-100%

Estimated Litter Depth (inches): None

Average Vegetation Height (inches): 0 (None)

Dominant Plant Species (Common Names): None

Invasive Plant Species (Common Names):

Representative Photo(s):





Field Data Sheet





Field Data Sheet

Notes :

Do you need to report observations of another open field?

Yes



Field Data Sheet

Corresponding Point ID(s): 45

Anthropogenic Disturbance/Management Practices: None notable

Primary Open Field Cover Type: Field Cropland (including hay, wheat, oats, etc.)

Estimated Grass Cover (%): 90-100%

Estimated Forb Cover (%): None

Estimated Woody Vegetation Cover (%): None

Estimated Bare Ground (%): None

Estimated Litter Depth (inches): None

Average Vegetation Height (inches): 48-54

Dominant Plant Species (Common Names): Wheat

Invasive Plant Species (Common Names):

Representative Photo(s):





Field Data Sheet





Field Data Sheet

Notes :

Do you need to report observations of another open field?

Yes



Field Data Sheet

Corresponding Point ID(s): 48

Anthropogenic Disturbance/Management Practices: None notable

Primary Open Field Cover Type: Field Cropland (including hay, wheat, oats, etc.)

Estimated Grass Cover (%): 90-100%

Estimated Forb Cover (%): None

Estimated Woody Vegetation Cover (%): None

Estimated Bare Ground (%): None

Estimated Litter Depth (inches): None

Average Vegetation Height (inches): 48-54

Dominant Plant Species (Common Names): Wheat

Invasive Plant Species (Common Names):

Representative Photo(s):





Field Data Sheet





Field Data Sheet

Notes :

Do you need to report observations of another open field?

No



Field Data Sheet

Weather Conditions at End of Survey

Temperature (°F): 57

Wind Speed (mph): 4 – 7 (Light Breeze; Leaves rustle)

Wind Direction: NNW

Cloud Cover: None (Clear)

Visibility: Good (10+ miles; clear)

Precipitation: None (Clear)

Weather Notes:

Were there any notable weather events/changes during the survey? No

Bird Observation Summary

Were any Endangered/Threatened Species observed?

No

Were any Species of Special Concern observed?

Yes

Were probable, possible, or confirmed breeding behaviors observed for any Listed Species (Endangered/Threatened/Special Concern)?

No

Were there additional photos documenting birds observed, habitat conditions, and/or other features of interest?

No

Additional Photo(s):

Were any alternate point count survey locations used due to access or visual constraints?

No

Alternate Point Count Survey Locations:



Field Data Sheet

**Incidental bird species observed outside of timed point count surveys
(Alpha Codes or Common Names):**

Overall Survey Notes:



Field Data Sheet

Breeding Bird Survey

Submitted By: mbaber@edrdpc.com

Submitted Time: May 30, 2023 12:18 PM

Survey Information

Project Name: Agricola Wind

Survey Date: May 30, 2023

Surveyor Name: Max Baber

Points Surveyed: 39-42, 51-61

Survey Start Time: 05:14

Survey End Time: 10:33

Weather Conditions at Start of Survey

Temperature (°F): 57

Wind Speed (mph): 8 – 12 (Gentle Breeze; Leaves and Small twigs in constant motion)

Wind Direction: SSE

Cloud Cover: None (Clear)

Visibility: Good (10+ miles; clear)

Precipitation: None (Clear)

Weather Notes:



Field Data Sheet

Open Field Condition Observations

Corresponding Point ID(s): 55.1

Anthropogenic Disturbance/Management Practices: None notable

Primary Open Field Cover Type: Pastureland

Estimated Grass Cover (%): 50-90%

Estimated Forb Cover (%): 25-50%

Estimated Woody Vegetation Cover (%): None

Estimated Bare Ground (%): None

Estimated Litter Depth (inches): 0-1"

Average Vegetation Height (inches): 12-18

Dominant Plant Species (Common Names): Grasses, clover

Invasive Plant Species (Common Names):

Representative Photo(s):





Field Data Sheet





Field Data Sheet

Notes :

Do you need to report observations of another open field?

Yes



Field Data Sheet

Corresponding Point ID(s): 58.1

Anthropogenic Disturbance/Management Practices: None notable

Primary Open Field Cover Type: Field Cropland (including hay, wheat, oats, etc.)

Estimated Grass Cover (%): 90-100%

Estimated Forb Cover (%): None

Estimated Woody Vegetation Cover (%): None

Estimated Bare Ground (%): None

Estimated Litter Depth (inches): None

Average Vegetation Height (inches): 18-24

Dominant Plant Species (Common Names): Wheat

Invasive Plant Species (Common Names):

Representative Photo(s):





Field Data Sheet





Field Data Sheet

Notes :

Do you need to report observations of another open field?

Yes



Field Data Sheet

Corresponding Point ID(s): 58.2

Anthropogenic Disturbance/Management Practices: None notable

Primary Open Field Cover Type: Field Cropland (including hay, wheat, oats, etc.)

Estimated Grass Cover (%): 90-100%

Estimated Forb Cover (%): None

Estimated Woody Vegetation Cover (%): None

Estimated Bare Ground (%): None

Estimated Litter Depth (inches): None

Average Vegetation Height (inches): 24-30

Dominant Plant Species (Common Names): Wheat

Invasive Plant Species (Common Names):

Representative Photo(s):





Field Data Sheet





Field Data Sheet

Notes :

Do you need to report observations of another open field?

Yes



Field Data Sheet

Corresponding Point ID(s): 59

Anthropogenic Disturbance/Management Practices: Traffic Noise

Primary Open Field Cover Type: Field Cropland (including hay, wheat, oats, etc.)

Estimated Grass Cover (%): 50-90%

Estimated Forb Cover (%): None

Estimated Woody Vegetation Cover (%): None

Estimated Bare Ground (%): None

Estimated Litter Depth (inches): 0-1"

Average Vegetation Height (inches): 30-36

Dominant Plant Species (Common Names): Grasses

Invasive Plant Species (Common Names):

Representative Photo(s):





Field Data Sheet





Field Data Sheet

Notes :

Do you need to report observations of another open field?

Yes



Field Data Sheet

Corresponding Point ID(s): 60

Anthropogenic Disturbance/Management Practices: Traffic Noise

Primary Open Field Cover Type: Field Cropland (including hay, wheat, oats, etc.)

Estimated Grass Cover (%): 90-100%

Estimated Forb Cover (%): None

Estimated Woody Vegetation Cover (%): None

Estimated Bare Ground (%): None

Estimated Litter Depth (inches): None

Average Vegetation Height (inches): 24-30

Dominant Plant Species (Common Names): Wheat

Invasive Plant Species (Common Names):

Representative Photo(s):





Field Data Sheet





Field Data Sheet

Notes :

Do you need to report observations of another open field?

Yes



Field Data Sheet

Corresponding Point ID(s): 61

Anthropogenic Disturbance/Management Practices: None notable

Primary Open Field Cover Type: Field Cropland (including hay, wheat, oats, etc.)

Estimated Grass Cover (%): 50-90%

Estimated Forb Cover (%): 1-10%

Estimated Woody Vegetation Cover (%): None

Estimated Bare Ground (%): 1-10%

Estimated Litter Depth (inches): None

Average Vegetation Height (inches): 18-24

Dominant Plant Species (Common Names): Wheat

Invasive Plant Species (Common Names):

Representative Photo(s):





Field Data Sheet





Field Data Sheet

Notes :

Do you need to report observations of another open field?

Yes



Field Data Sheet

Corresponding Point ID(s): 56

Anthropogenic Disturbance/Management Practices: Traffic Noise

Primary Open Field Cover Type: Row Cropland (Active)

Estimated Grass Cover (%): 1-10%

Estimated Forb Cover (%): 1-10%

Estimated Woody Vegetation Cover (%): None

Estimated Bare Ground (%): 90-100%

Estimated Litter Depth (inches): None

Average Vegetation Height (inches): 0-2

Dominant Plant Species (Common Names): Corn

Invasive Plant Species (Common Names):

Representative Photo(s):





Field Data Sheet





Field Data Sheet

Notes :

Do you need to report observations of another open field?

Yes



Field Data Sheet

Corresponding Point ID(s): 57

Anthropogenic Disturbance/Management Practices: Traffic Noise

Primary Open Field Cover Type: Row Cropland (Active)

Estimated Grass Cover (%): 1-10%

Estimated Forb Cover (%): None

Estimated Woody Vegetation Cover (%): None

Estimated Bare Ground (%): 90-100%

Estimated Litter Depth (inches): None

Average Vegetation Height (inches): 2-4

Dominant Plant Species (Common Names): Corn

Invasive Plant Species (Common Names):

Representative Photo(s):





Field Data Sheet





Field Data Sheet

Notes :

Do you need to report observations of another open field?

Yes



Field Data Sheet

Corresponding Point ID(s): 58

Anthropogenic Disturbance/Management Practices: Traffic Noise

Primary Open Field Cover Type: Field Cropland (including hay, wheat, oats, etc.)

Estimated Grass Cover (%): 50-90%

Estimated Forb Cover (%): 25-50%

Estimated Woody Vegetation Cover (%): None

Estimated Bare Ground (%): 1-10%

Estimated Litter Depth (inches): 0-1"

Average Vegetation Height (inches): 4-6

Dominant Plant Species (Common Names): Grasses, clover

Invasive Plant Species (Common Names):

Representative Photo(s):





Field Data Sheet





Field Data Sheet

Notes :

Do you need to report observations of another open field?

Yes



Field Data Sheet

Corresponding Point ID(s): 52

Anthropogenic Disturbance/Management Practices: Traffic Noise

Primary Open Field Cover Type: Row Cropland (Active)

Estimated Grass Cover (%): None

Estimated Forb Cover (%): None

Estimated Woody Vegetation Cover (%): None

Estimated Bare Ground (%): 90-100%

Estimated Litter Depth (inches): None

Average Vegetation Height (inches): 0 (None)

Dominant Plant Species (Common Names):

Invasive Plant Species (Common Names):

Representative Photo(s):





Field Data Sheet





Field Data Sheet

Notes :

Do you need to report observations of another open field?

Yes



Field Data Sheet

Corresponding Point ID(s): 53

Anthropogenic Disturbance/Management Practices: None notable

Primary Open Field Cover Type: Row Cropland (Active)

Estimated Grass Cover (%): None

Estimated Forb Cover (%): None

Estimated Woody Vegetation Cover (%): None

Estimated Bare Ground (%): 90-100%

Estimated Litter Depth (inches): None

Average Vegetation Height (inches): 0 (None)

Dominant Plant Species (Common Names):

Invasive Plant Species (Common Names):

Representative Photo(s):





Field Data Sheet





Field Data Sheet

Notes :

Do you need to report observations of another open field?

Yes



Field Data Sheet

Corresponding Point ID(s): 55

Anthropogenic Disturbance/Management Practices: None notable

Primary Open Field Cover Type: Row Cropland (Active)

Estimated Grass Cover (%): 1-10%

Estimated Forb Cover (%): None

Estimated Woody Vegetation Cover (%): None

Estimated Bare Ground (%): 90-100%

Estimated Litter Depth (inches): None

Average Vegetation Height (inches): 2-4

Dominant Plant Species (Common Names): Corn

Invasive Plant Species (Common Names):

Representative Photo(s):





Field Data Sheet





Field Data Sheet

Notes :

Do you need to report observations of another open field?

Yes



Field Data Sheet

Corresponding Point ID(s): 54

Anthropogenic Disturbance/Management Practices: None notable

Primary Open Field Cover Type: Row Cropland (Active)

Estimated Grass Cover (%): 1-10%

Estimated Forb Cover (%): None

Estimated Woody Vegetation Cover (%): None

Estimated Bare Ground (%): 90-100%

Estimated Litter Depth (inches): None

Average Vegetation Height (inches): 2-4

Dominant Plant Species (Common Names): Corn

Invasive Plant Species (Common Names):

Representative Photo(s):





Field Data Sheet





Field Data Sheet

Notes :

Do you need to report observations of another open field?

Yes



Field Data Sheet

Corresponding Point ID(s): 55.2

Anthropogenic Disturbance/Management Practices: None notable

Primary Open Field Cover Type: Row Cropland (Active)

Estimated Grass Cover (%): 1-10%

Estimated Forb Cover (%): None

Estimated Woody Vegetation Cover (%): None

Estimated Bare Ground (%): 90-100%

Estimated Litter Depth (inches): None

Average Vegetation Height (inches): 2-4

Dominant Plant Species (Common Names): Corn

Invasive Plant Species (Common Names):

Representative Photo(s):





Field Data Sheet





Field Data Sheet

Notes :

Do you need to report observations of another open field?

Yes



Field Data Sheet

Corresponding Point ID(s): 40.1

Anthropogenic Disturbance/Management Practices: None notable

Primary Open Field Cover Type: Row Cropland (Active)

Estimated Grass Cover (%): 1-10%

Estimated Forb Cover (%): 1-10%

Estimated Woody Vegetation Cover (%): None

Estimated Bare Ground (%): 90-100%

Estimated Litter Depth (inches): 0-1"

Average Vegetation Height (inches): 6-12

Dominant Plant Species (Common Names): Mustard, burdock

Invasive Plant Species (Common Names):

Representative Photo(s):





Field Data Sheet





Field Data Sheet

Notes :

Do you need to report observations of another open field?

Yes



Field Data Sheet

Corresponding Point ID(s): 40

Anthropogenic Disturbance/Management Practices: None notable

Primary Open Field Cover Type: Row Cropland (Active)

Estimated Grass Cover (%): 1-10%

Estimated Forb Cover (%): 1-10%

Estimated Woody Vegetation Cover (%): None

Estimated Bare Ground (%): 90-100%

Estimated Litter Depth (inches): None

Average Vegetation Height (inches): 4-6

Dominant Plant Species (Common Names): Dock, grasses

Invasive Plant Species (Common Names):

Representative Photo(s):





Field Data Sheet





Field Data Sheet

Notes :

Do you need to report observations of another open field?

Yes



Field Data Sheet

Corresponding Point ID(s): 41

Anthropogenic Disturbance/Management Practices: None notable

Primary Open Field Cover Type: Row Cropland (Active)

Estimated Grass Cover (%): 1-10%

Estimated Forb Cover (%): 1-10%

Estimated Woody Vegetation Cover (%): None

Estimated Bare Ground (%): 90-100%

Estimated Litter Depth (inches): None

Average Vegetation Height (inches): 4-6

Dominant Plant Species (Common Names): Dock, clover

Invasive Plant Species (Common Names): Dandelion

Representative Photo(s):





Field Data Sheet





Field Data Sheet

Notes :

Do you need to report observations of another open field?

Yes



Field Data Sheet

Corresponding Point ID(s): 42

Anthropogenic Disturbance/Management Practices: None notable

Primary Open Field Cover Type: Row Cropland (Active)

Estimated Grass Cover (%): None

Estimated Forb Cover (%): 1-10%

Estimated Woody Vegetation Cover (%): None

Estimated Bare Ground (%): 90-100%

Estimated Litter Depth (inches): None

Average Vegetation Height (inches): 4-6

Dominant Plant Species (Common Names): Mustard

Invasive Plant Species (Common Names): Dandelion

Representative Photo(s):





Field Data Sheet





Field Data Sheet

Notes :

Do you need to report observations of another open field?

Yes



Field Data Sheet

Corresponding Point ID(s): 39

Anthropogenic Disturbance/Management Practices: None notable

Primary Open Field Cover Type: Field Cropland (including hay, wheat, oats, etc.)

Estimated Grass Cover (%): 25-50%

Estimated Forb Cover (%): 25-50%

Estimated Woody Vegetation Cover (%): None

Estimated Bare Ground (%): None

Estimated Litter Depth (inches): 0-1"

Average Vegetation Height (inches): 24-30

Dominant Plant Species (Common Names): Vetch, grasses

Invasive Plant Species (Common Names):

Representative Photo(s):





Field Data Sheet





Field Data Sheet

Notes :

Do you need to report observations of another open field?

Yes



Field Data Sheet

Corresponding Point ID(s): 51

Anthropogenic Disturbance/Management Practices: None notable

Primary Open Field Cover Type: Field Cropland (including hay, wheat, oats, etc.)

Estimated Grass Cover (%): 50-90%

Estimated Forb Cover (%): 10-25%

Estimated Woody Vegetation Cover (%): None

Estimated Bare Ground (%): None

Estimated Litter Depth (inches): 0-1"

Average Vegetation Height (inches): 24-30

Dominant Plant Species (Common Names): Grasses

Invasive Plant Species (Common Names): Dandelion

Representative Photo(s):





Field Data Sheet





Field Data Sheet

Notes :

Do you need to report observations of another open field?

No



Field Data Sheet

Weather Conditions at End of Survey

Temperature (°F): 68

Wind Speed (mph): 8 – 12 (Gentle Breeze; Leaves and Small twigs in constant motion)

Wind Direction: SSE

Cloud Cover: None (Clear)

Visibility: Good (10+ miles; clear)

Precipitation: None (Clear)

Weather Notes:

Were there any notable weather events/changes during the survey? No

Bird Observation Summary

Were any Endangered/Threatened Species observed?

No

Were any Species of Special Concern observed?

Yes

Were probable, possible, or confirmed breeding behaviors observed for any Listed Species (Endangered/Threatened/Special Concern)?

No

Were there additional photos documenting birds observed, habitat conditions, and/or other features of interest?

No

Additional Photo(s):

Were any alternate point count survey locations used due to access or visual constraints?

No



Field Data Sheet

Alternate Point Count Survey Locations:

Incidental bird species observed outside of timed point count surveys (Alpha Codes or Common Names):

Overall Survey Notes:

High wind may have reduced bird detection



Field Data Sheet

Breeding Bird Survey

Submitted By: bsmith@edrdpc.com

Submitted Time: May 31, 2023 10:06 AM

Survey Information

Project Name: Agricola Wind

Survey Date: May 31, 2023

Surveyor Name: Brooke Smith

Points Surveyed: 1-15, 20-21

Survey Start Time: 05:15

Survey End Time: 10:08

Weather Conditions at Start of Survey

Temperature (°F): 58

Wind Speed (mph): 4 – 7 (Light Breeze; Leaves rustle)

Wind Direction: SE

Cloud Cover: None (Clear)

Visibility: Good (10+ miles; clear)

Precipitation: None (Clear)

Weather Notes:



Field Data Sheet

Open Field Condition Observations

Corresponding Point ID(s): 1

Anthropogenic Disturbance/Management Practices: None notable

Primary Open Field Cover Type: Field Cropland (including hay, wheat, oats, etc.)

Estimated Grass Cover (%): None

Estimated Forb Cover (%): 90-100%

Estimated Woody Vegetation Cover (%): None

Estimated Bare Ground (%): None

Estimated Litter Depth (inches): 1-3"

Average Vegetation Height (inches): 0-2

Dominant Plant Species (Common Names): Alfalfa

Invasive Plant Species (Common Names):

Representative Photo(s):





Field Data Sheet





Field Data Sheet

Notes :

Do you need to report observations of another open field?

Yes



Field Data Sheet

Corresponding Point ID(s): 2

Anthropogenic Disturbance/Management Practices: None notable

Primary Open Field Cover Type: Field Cropland (including hay, wheat, oats, etc.)

Estimated Grass Cover (%): None

Estimated Forb Cover (%): 90-100%

Estimated Woody Vegetation Cover (%): None

Estimated Bare Ground (%): None

Estimated Litter Depth (inches): 3-6"

Average Vegetation Height (inches): 0-2

Dominant Plant Species (Common Names): Alfalfa

Invasive Plant Species (Common Names):

Representative Photo(s):





Field Data Sheet





Field Data Sheet

Notes :

Do you need to report observations of another open field?

Yes



Field Data Sheet

Corresponding Point ID(s): 5

Anthropogenic Disturbance/Management Practices: Traffic Noise

Primary Open Field Cover Type: Row Cropland (Active)

Estimated Grass Cover (%): None

Estimated Forb Cover (%): 1-10%

Estimated Woody Vegetation Cover (%): None

Estimated Bare Ground (%): 90-100%

Estimated Litter Depth (inches): None

Average Vegetation Height (inches): 0-2

Dominant Plant Species (Common Names): Corn

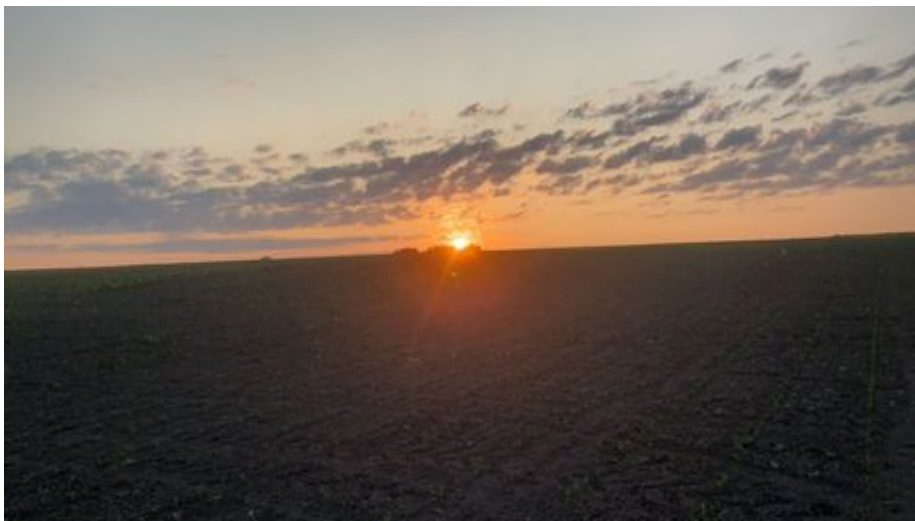
Invasive Plant Species (Common Names):

Representative Photo(s):





Field Data Sheet





Field Data Sheet

Notes :

Do you need to report observations of another open field?

Yes



Field Data Sheet

Corresponding Point ID(s): 4

Anthropogenic Disturbance/Management Practices: Traffic Noise

Primary Open Field Cover Type: Row Cropland (Active)

Estimated Grass Cover (%): None

Estimated Forb Cover (%): 1-10%

Estimated Woody Vegetation Cover (%): None

Estimated Bare Ground (%): 90-100%

Estimated Litter Depth (inches): None

Average Vegetation Height (inches): 0-2

Dominant Plant Species (Common Names): Corn

Invasive Plant Species (Common Names):

Representative Photo(s):





Field Data Sheet





Field Data Sheet

Notes :

Do you need to report observations of another open field?

Yes



Field Data Sheet

Corresponding Point ID(s): 3

Anthropogenic Disturbance/Management Practices: Traffic Noise

Primary Open Field Cover Type: Row Cropland (Active)

Estimated Grass Cover (%): None

Estimated Forb Cover (%): 25-50%

Estimated Woody Vegetation Cover (%): None

Estimated Bare Ground (%): 25-50%

Estimated Litter Depth (inches): None

Average Vegetation Height (inches): 0-2

Dominant Plant Species (Common Names): Grass

Invasive Plant Species (Common Names):

Representative Photo(s):





Field Data Sheet





Field Data Sheet

Notes :

Do you need to report observations of another open field?

Yes



Field Data Sheet

Corresponding Point ID(s): 7

Anthropogenic Disturbance/Management Practices: Traffic Noise

Primary Open Field Cover Type: Field Cropland (including hay, wheat, oats, etc.)

Estimated Grass Cover (%): None

Estimated Forb Cover (%): 90-100%

Estimated Woody Vegetation Cover (%): None

Estimated Bare Ground (%): None

Estimated Litter Depth (inches): None

Average Vegetation Height (inches): 0-2

Dominant Plant Species (Common Names): Grass

Invasive Plant Species (Common Names):

Representative Photo(s):





Field Data Sheet





Field Data Sheet

Notes :

Do you need to report observations of another open field?

Yes



Field Data Sheet

Corresponding Point ID(s): 6

Anthropogenic Disturbance/Management Practices: Traffic Noise

Primary Open Field Cover Type: Row Cropland (Active)

Estimated Grass Cover (%): None

Estimated Forb Cover (%): 1-10%

Estimated Woody Vegetation Cover (%): None

Estimated Bare Ground (%): 90-100%

Estimated Litter Depth (inches): None

Average Vegetation Height (inches): 0-2

Dominant Plant Species (Common Names): Corn

Invasive Plant Species (Common Names):

Representative Photo(s):





Field Data Sheet





Field Data Sheet

Notes :

Do you need to report observations of another open field?

Yes



Field Data Sheet

Corresponding Point ID(s): 9

Anthropogenic Disturbance/Management Practices: None notable

Primary Open Field Cover Type: Row Cropland (Active)

Estimated Grass Cover (%): None

Estimated Forb Cover (%): 1-10%

Estimated Woody Vegetation Cover (%): None

Estimated Bare Ground (%): None

Estimated Litter Depth (inches): None

Average Vegetation Height (inches): 0-2

Dominant Plant Species (Common Names): Corn

Invasive Plant Species (Common Names):

Representative Photo(s):





Field Data Sheet





Field Data Sheet

Notes :

Do you need to report observations of another open field?

Yes



Field Data Sheet

Corresponding Point ID(s): 9.1

Anthropogenic Disturbance/Management Practices: None notable

Primary Open Field Cover Type: Row Cropland (Active)

Estimated Grass Cover (%): None

Estimated Forb Cover (%): 1-10%

Estimated Woody Vegetation Cover (%): None

Estimated Bare Ground (%): 90-100%

Estimated Litter Depth (inches): None

Average Vegetation Height (inches): 0-2

Dominant Plant Species (Common Names): Corn

Invasive Plant Species (Common Names):

Representative Photo(s):





Field Data Sheet





Field Data Sheet

Notes :

Do you need to report observations of another open field?

Yes



Field Data Sheet

Corresponding Point ID(s): 10

Anthropogenic Disturbance/Management Practices: Traffic Noise

Primary Open Field Cover Type: Row Cropland (Active)

Estimated Grass Cover (%): None

Estimated Forb Cover (%): 1-10%

Estimated Woody Vegetation Cover (%): None

Estimated Bare Ground (%): 90-100%

Estimated Litter Depth (inches): None

Average Vegetation Height (inches): 0-2

Dominant Plant Species (Common Names): Corn

Invasive Plant Species (Common Names):

Representative Photo(s):





Field Data Sheet





Field Data Sheet

Notes :

Do you need to report observations of another open field?

Yes



Field Data Sheet

Corresponding Point ID(s): 10.1

Anthropogenic Disturbance/Management Practices: Traffic Noise

Primary Open Field Cover Type: Row Cropland (Active)

Estimated Grass Cover (%): None

Estimated Forb Cover (%): 1-10%

Estimated Woody Vegetation Cover (%): None

Estimated Bare Ground (%): 90-100%

Estimated Litter Depth (inches): None

Average Vegetation Height (inches): 0-2

Dominant Plant Species (Common Names): Corn

Invasive Plant Species (Common Names):

Representative Photo(s):





Field Data Sheet





Field Data Sheet

Notes :

Do you need to report observations of another open field?

Yes



Field Data Sheet

Corresponding Point ID(s): 11

Anthropogenic Disturbance/Management Practices: None notable

Primary Open Field Cover Type: Field Cropland (including hay, wheat, oats, etc.)

Estimated Grass Cover (%): 90-100%

Estimated Forb Cover (%): None

Estimated Woody Vegetation Cover (%): None

Estimated Bare Ground (%): None

Estimated Litter Depth (inches): None

Average Vegetation Height (inches): 24-30

Dominant Plant Species (Common Names): Grass

Invasive Plant Species (Common Names):

Representative Photo(s):





Field Data Sheet





Field Data Sheet

Notes :

Do you need to report observations of another open field?

Yes



Field Data Sheet

Corresponding Point ID(s): 12

Anthropogenic Disturbance/Management Practices: Farm Equipment Noise

Primary Open Field Cover Type: Field Cropland (including hay, wheat, oats, etc.)

Estimated Grass Cover (%): 90-100%

Estimated Forb Cover (%): None

Estimated Woody Vegetation Cover (%): None

Estimated Bare Ground (%): None

Estimated Litter Depth (inches): None

Average Vegetation Height (inches): 30-36

Dominant Plant Species (Common Names): Grass

Invasive Plant Species (Common Names):

Representative Photo(s):





Field Data Sheet





Field Data Sheet

Notes :

Do you need to report observations of another open field?

Yes



Field Data Sheet

Corresponding Point ID(s): 13

Anthropogenic Disturbance/Management Practices: None notable

Primary Open Field Cover Type: Field Cropland (including hay, wheat, oats, etc.)

Estimated Grass Cover (%): 90-100%

Estimated Forb Cover (%): None

Estimated Woody Vegetation Cover (%): None

Estimated Bare Ground (%): None

Estimated Litter Depth (inches): None

Average Vegetation Height (inches): 24-30

Dominant Plant Species (Common Names): Grass

Invasive Plant Species (Common Names):

Representative Photo(s):





Field Data Sheet





Field Data Sheet

Notes :

Do you need to report observations of another open field?

Yes



Field Data Sheet

Corresponding Point ID(s): 14

Anthropogenic Disturbance/Management Practices: None notable

Primary Open Field Cover Type: Field Cropland (including hay, wheat, oats, etc.)

Estimated Grass Cover (%): 90-100%

Estimated Forb Cover (%): None

Estimated Woody Vegetation Cover (%): None

Estimated Bare Ground (%): None

Estimated Litter Depth (inches): None

Average Vegetation Height (inches): 18-24

Dominant Plant Species (Common Names): Grass

Invasive Plant Species (Common Names):

Representative Photo(s):





Field Data Sheet





Field Data Sheet

Notes :

Do you need to report observations of another open field?

Yes



Field Data Sheet

Corresponding Point ID(s): 15

Anthropogenic Disturbance/Management Practices: None notable

Primary Open Field Cover Type: Field Cropland (including hay, wheat, oats, etc.)

Estimated Grass Cover (%): 90-100%

Estimated Forb Cover (%): None

Estimated Woody Vegetation Cover (%): None

Estimated Bare Ground (%): None

Estimated Litter Depth (inches): None

Average Vegetation Height (inches): 36-42

Dominant Plant Species (Common Names): Grass

Invasive Plant Species (Common Names):

Representative Photo(s):





Field Data Sheet





Field Data Sheet

Notes :

Do you need to report observations of another open field?

Yes



Field Data Sheet

Corresponding Point ID(s): 21

Anthropogenic Disturbance/Management Practices: Farm Equipment Noise

Primary Open Field Cover Type: Row Cropland (Active)

Estimated Grass Cover (%): None

Estimated Forb Cover (%): None

Estimated Woody Vegetation Cover (%): None

Estimated Bare Ground (%): 50-90%

Estimated Litter Depth (inches): 0-1"

Average Vegetation Height (inches): 0 (None)

Dominant Plant Species (Common Names):

Invasive Plant Species (Common Names):

Representative Photo(s):





Field Data Sheet





Field Data Sheet

Notes :

Do you need to report observations of another open field?

Yes



Field Data Sheet

Corresponding Point ID(s): 20

Anthropogenic Disturbance/Management Practices: Farm Equipment Noise

Primary Open Field Cover Type: Row Cropland (Active)

Estimated Grass Cover (%): None

Estimated Forb Cover (%): None

Estimated Woody Vegetation Cover (%): None

Estimated Bare Ground (%): 90-100%

Estimated Litter Depth (inches): 0-1"

Average Vegetation Height (inches): 0 (None)

Dominant Plant Species (Common Names):

Invasive Plant Species (Common Names):

Representative Photo(s):





Field Data Sheet





Field Data Sheet

Notes :

Do you need to report observations of another open field?

No



Field Data Sheet

Weather Conditions at End of Survey

Temperature (°F): 73

Wind Speed (mph): 1 – 3 (Light Air; Smoke drifts)

Wind Direction: SW

Cloud Cover: None (Clear)

Visibility: Good (10+ miles; clear)

Precipitation: None (Clear)

Weather Notes:

Were there any notable weather events/changes during the survey? No

Bird Observation Summary

Were any Endangered/Threatened Species observed?

No

Were any Species of Special Concern observed?

Yes

Were probable, possible, or confirmed breeding behaviors observed for any Listed Species (Endangered/Threatened/Special Concern)?

No

Were there additional photos documenting birds observed, habitat conditions, and/or other features of interest?

No

Additional Photo(s):

Were any alternate point count survey locations used due to access or visual constraints?

No

Alternate Point Count Survey Locations:



Field Data Sheet

**Incidental bird species observed outside of timed point count surveys
(Alpha Codes or Common Names):**

MALL

Overall Survey Notes:



Field Data Sheet

Breeding Bird Survey

Submitted By: mbaber@edrdpc.com

Submitted Time: June 1, 2023 2:05 PM

Survey Information

Project Name: Agricola Wind

Survey Date: June 1, 2023

Surveyor Name: Max Baber

Points Surveyed: 16, 19, 22-38, 48

Survey Start Time: 05:32

Survey End Time: 10:33

Weather Conditions at Start of Survey

Temperature (°F): 56

Wind Speed (mph): 0 – 1 (Calm; Smoke rises vertically)

Wind Direction: ESE

Cloud Cover: Mostly Clear (10-25%)

Visibility: Good (10+ miles; clear)

Precipitation: None (Clear)

Weather Notes:



Field Data Sheet

Open Field Condition Observations

Corresponding Point ID(s): 31

Anthropogenic Disturbance/Management Practices: Traffic Noise

Primary Open Field Cover Type: Row Cropland (Active)

Estimated Grass Cover (%): 1-10%

Estimated Forb Cover (%): None

Estimated Woody Vegetation Cover (%): None

Estimated Bare Ground (%): 90-100%

Estimated Litter Depth (inches): None

Average Vegetation Height (inches): 4-6

Dominant Plant Species (Common Names): Corn

Invasive Plant Species (Common Names):

Representative Photo(s):





Field Data Sheet





Field Data Sheet

Notes :

Do you need to report observations of another open field?

Yes



Field Data Sheet

Corresponding Point ID(s): 32

Anthropogenic Disturbance/Management Practices: None notable

Primary Open Field Cover Type: Row Cropland (Active)

Estimated Grass Cover (%): 1-10%

Estimated Forb Cover (%): None

Estimated Woody Vegetation Cover (%): None

Estimated Bare Ground (%): 90-100%

Estimated Litter Depth (inches): None

Average Vegetation Height (inches): 4-6

Dominant Plant Species (Common Names): Corn

Invasive Plant Species (Common Names):

Representative Photo(s):





Field Data Sheet





Field Data Sheet

Notes :

Do you need to report observations of another open field?

Yes



Field Data Sheet

Corresponding Point ID(s): 33

Anthropogenic Disturbance/Management Practices: Traffic Noise

Primary Open Field Cover Type: Row Cropland (Active)

Estimated Grass Cover (%): 1-10%

Estimated Forb Cover (%): None

Estimated Woody Vegetation Cover (%): None

Estimated Bare Ground (%): 90-100%

Estimated Litter Depth (inches): None

Average Vegetation Height (inches): 2-4

Dominant Plant Species (Common Names): Corn

Invasive Plant Species (Common Names):

Representative Photo(s):





Field Data Sheet





Field Data Sheet

Notes :

Do you need to report observations of another open field?

Yes



Field Data Sheet

Corresponding Point ID(s): 22

Anthropogenic Disturbance/Management Practices: Traffic Noise

Primary Open Field Cover Type: Row Cropland (Active)

Estimated Grass Cover (%): 1-10%

Estimated Forb Cover (%): None

Estimated Woody Vegetation Cover (%): None

Estimated Bare Ground (%): 90-100%

Estimated Litter Depth (inches): None

Average Vegetation Height (inches): 4-6

Dominant Plant Species (Common Names): Corn

Invasive Plant Species (Common Names):

Representative Photo(s):





Field Data Sheet





Field Data Sheet

Notes :

Do you need to report observations of another open field?

Yes



Field Data Sheet

Corresponding Point ID(s): 23

Anthropogenic Disturbance/Management Practices: Traffic Noise

Primary Open Field Cover Type: Row Cropland (Active)

Estimated Grass Cover (%): 1-10%

Estimated Forb Cover (%): None

Estimated Woody Vegetation Cover (%): None

Estimated Bare Ground (%): 90-100%

Estimated Litter Depth (inches): None

Average Vegetation Height (inches): 4-6

Dominant Plant Species (Common Names): Corn

Invasive Plant Species (Common Names):

Representative Photo(s):





Field Data Sheet





Field Data Sheet

Notes :

Do you need to report observations of another open field?

Yes



Field Data Sheet

Corresponding Point ID(s): 24

Anthropogenic Disturbance/Management Practices: Traffic Noise

Primary Open Field Cover Type: Row Cropland (Active)

Estimated Grass Cover (%): 1-10%

Estimated Forb Cover (%): 1-10%

Estimated Woody Vegetation Cover (%): None

Estimated Bare Ground (%): 90-100%

Estimated Litter Depth (inches): None

Average Vegetation Height (inches): 4-6

Dominant Plant Species (Common Names): Corn, vetch

Invasive Plant Species (Common Names):

Representative Photo(s):





Field Data Sheet





Field Data Sheet

Notes :

Do you need to report observations of another open field?

Yes



Field Data Sheet

Corresponding Point ID(s): 26

Anthropogenic Disturbance/Management Practices: Traffic Noise

Primary Open Field Cover Type: Row Cropland (Active)

Estimated Grass Cover (%): 1-10%

Estimated Forb Cover (%): None

Estimated Woody Vegetation Cover (%): None

Estimated Bare Ground (%): 90-100%

Estimated Litter Depth (inches): None

Average Vegetation Height (inches): 4-6

Dominant Plant Species (Common Names): Corn

Invasive Plant Species (Common Names):

Representative Photo(s):





Field Data Sheet





Field Data Sheet

Notes :

Do you need to report observations of another open field?

Yes



Field Data Sheet

Corresponding Point ID(s): 25

Anthropogenic Disturbance/Management Practices: None notable

Primary Open Field Cover Type: Field Cropland (including hay, wheat, oats, etc.)

Estimated Grass Cover (%): None

Estimated Forb Cover (%): 25-50%

Estimated Woody Vegetation Cover (%): None

Estimated Bare Ground (%): 50-90%

Estimated Litter Depth (inches): None

Average Vegetation Height (inches): 4-6

Dominant Plant Species (Common Names): Vetch

Invasive Plant Species (Common Names):

Representative Photo(s):





Field Data Sheet





Field Data Sheet

Notes :

Do you need to report observations of another open field?

Yes



Field Data Sheet

Corresponding Point ID(s): 27

Anthropogenic Disturbance/Management Practices: Traffic Noise

Primary Open Field Cover Type: Row Cropland (Active)

Estimated Grass Cover (%): 1-10%

Estimated Forb Cover (%): None

Estimated Woody Vegetation Cover (%): None

Estimated Bare Ground (%): 90-100%

Estimated Litter Depth (inches): None

Average Vegetation Height (inches): 2-4

Dominant Plant Species (Common Names): Corn

Invasive Plant Species (Common Names):

Representative Photo(s):





Field Data Sheet





Field Data Sheet

Notes :

Do you need to report observations of another open field?

Yes



Field Data Sheet

Corresponding Point ID(s): 28

Anthropogenic Disturbance/Management Practices: Traffic Noise

Primary Open Field Cover Type: Row Cropland (Active)

Estimated Grass Cover (%): 1-10%

Estimated Forb Cover (%): None

Estimated Woody Vegetation Cover (%): None

Estimated Bare Ground (%): 90-100%

Estimated Litter Depth (inches): None

Average Vegetation Height (inches): 2-4

Dominant Plant Species (Common Names): Corn

Invasive Plant Species (Common Names):

Representative Photo(s):





Field Data Sheet





Field Data Sheet

Notes :

Do you need to report observations of another open field?

Yes



Field Data Sheet

Corresponding Point ID(s): 29

Anthropogenic Disturbance/Management Practices: Traffic Noise

Primary Open Field Cover Type: Field Cropland (including hay, wheat, oats, etc.)

Estimated Grass Cover (%): 10-25%

Estimated Forb Cover (%): 50-90%

Estimated Woody Vegetation Cover (%): None

Estimated Bare Ground (%): 1-10%

Estimated Litter Depth (inches): None

Average Vegetation Height (inches): 4-6

Dominant Plant Species (Common Names): Vetch

Invasive Plant Species (Common Names):

Representative Photo(s):





Field Data Sheet





Field Data Sheet

Notes :

Field mowed since previous survey

Do you need to report observations of another open field?

Yes



Field Data Sheet

Corresponding Point ID(s): 30

Anthropogenic Disturbance/Management Practices: Traffic Noise

Primary Open Field Cover Type: Field Cropland (including hay, wheat, oats, etc.)

Estimated Grass Cover (%): 1-10%

Estimated Forb Cover (%): 25-50%

Estimated Woody Vegetation Cover (%): None

Estimated Bare Ground (%): 50-90%

Estimated Litter Depth (inches): None

Average Vegetation Height (inches): 4-6

Dominant Plant Species (Common Names): Vetch

Invasive Plant Species (Common Names):

Representative Photo(s):





Field Data Sheet





Field Data Sheet

Notes :

Do you need to report observations of another open field?

Yes



Field Data Sheet

Corresponding Point ID(s): 35

Anthropogenic Disturbance/Management Practices: Traffic Noise

Primary Open Field Cover Type: Row Cropland (Active)

Estimated Grass Cover (%): 1-10%

Estimated Forb Cover (%): None

Estimated Woody Vegetation Cover (%): None

Estimated Bare Ground (%): 90-100%

Estimated Litter Depth (inches): None

Average Vegetation Height (inches): 4-6

Dominant Plant Species (Common Names): Corn

Invasive Plant Species (Common Names):

Representative Photo(s):





Field Data Sheet





Field Data Sheet

Notes :

Do you need to report observations of another open field?

Yes



Field Data Sheet

Corresponding Point ID(s): 34

Anthropogenic Disturbance/Management Practices: Traffic Noise

Primary Open Field Cover Type: Field Cropland (including hay, wheat, oats, etc.)

Estimated Grass Cover (%): 25-50%

Estimated Forb Cover (%): 50-90%

Estimated Woody Vegetation Cover (%): None

Estimated Bare Ground (%): 10-25%

Estimated Litter Depth (inches): 0-1"

Average Vegetation Height (inches): 6-12

Dominant Plant Species (Common Names): Grasses, clover

Invasive Plant Species (Common Names):

Representative Photo(s):





Field Data Sheet





Field Data Sheet

Notes :

Do you need to report observations of another open field?

Yes



Field Data Sheet

Corresponding Point ID(s): 38

Anthropogenic Disturbance/Management Practices: None notable

Primary Open Field Cover Type: Field Cropland (including hay, wheat, oats, etc.)

Estimated Grass Cover (%): 1-10%

Estimated Forb Cover (%): 25-50%

Estimated Woody Vegetation Cover (%): None

Estimated Bare Ground (%): 50-90%

Estimated Litter Depth (inches): None

Average Vegetation Height (inches): 2-4

Dominant Plant Species (Common Names): Vetch

Invasive Plant Species (Common Names):

Representative Photo(s):





Field Data Sheet





Field Data Sheet

Notes :

Field harvested since previous survey

Do you need to report observations of another open field?

Yes



Field Data Sheet

Corresponding Point ID(s): 37

Anthropogenic Disturbance/Management Practices: None notable

Primary Open Field Cover Type: Field Cropland (including hay, wheat, oats, etc.)

Estimated Grass Cover (%): 1-10%

Estimated Forb Cover (%): 50-90%

Estimated Woody Vegetation Cover (%): None

Estimated Bare Ground (%): 25-50%

Estimated Litter Depth (inches): None

Average Vegetation Height (inches): 2-4

Dominant Plant Species (Common Names): Vetch

Invasive Plant Species (Common Names):

Representative Photo(s):





Field Data Sheet





Field Data Sheet

Notes :

Field mowed since previous survey

Do you need to report observations of another open field?

Yes



Field Data Sheet

Corresponding Point ID(s): 36

Anthropogenic Disturbance/Management Practices: None notable

Primary Open Field Cover Type: Field Cropland (including hay, wheat, oats, etc.)

Estimated Grass Cover (%): 25-50%

Estimated Forb Cover (%): 25-50%

Estimated Woody Vegetation Cover (%): None

Estimated Bare Ground (%): 25-50%

Estimated Litter Depth (inches): None

Average Vegetation Height (inches): 2-4

Dominant Plant Species (Common Names): Vetch

Invasive Plant Species (Common Names):

Representative Photo(s):





Field Data Sheet





Field Data Sheet

Notes :

Field mowed since previous survey

Do you need to report observations of another open field?

Yes



Field Data Sheet

Corresponding Point ID(s): 48

Anthropogenic Disturbance/Management Practices: Traffic Noise

Primary Open Field Cover Type: Field Cropland (including hay, wheat, oats, etc.)

Estimated Grass Cover (%): 50-90%

Estimated Forb Cover (%): None

Estimated Woody Vegetation Cover (%): None

Estimated Bare Ground (%): 10-25%

Estimated Litter Depth (inches): None

Average Vegetation Height (inches): 48-54

Dominant Plant Species (Common Names): Wheat

Invasive Plant Species (Common Names):

Representative Photo(s):





Field Data Sheet





Field Data Sheet

Notes :

Do you need to report observations of another open field?

Yes



Field Data Sheet

Corresponding Point ID(s): 16

Anthropogenic Disturbance/Management Practices: None notable

Primary Open Field Cover Type: Row Cropland (Active)

Estimated Grass Cover (%): None

Estimated Forb Cover (%): None

Estimated Woody Vegetation Cover (%): None

Estimated Bare Ground (%): 90-100%

Estimated Litter Depth (inches): None

Average Vegetation Height (inches): 0 (None)

Dominant Plant Species (Common Names):

Invasive Plant Species (Common Names):

Representative Photo(s):





Field Data Sheet





Field Data Sheet

Notes :

Field cut, tilled, and possibly sowed since previous survey

Do you need to report observations of another open field?

Yes



Field Data Sheet

Corresponding Point ID(s): 19

Anthropogenic Disturbance/Management Practices: Farm Equipment In Use

Primary Open Field Cover Type: Row Cropland (Active)

Estimated Grass Cover (%): None

Estimated Forb Cover (%): None

Estimated Woody Vegetation Cover (%): None

Estimated Bare Ground (%): 90-100%

Estimated Litter Depth (inches): None

Average Vegetation Height (inches): 0 (None)

Dominant Plant Species (Common Names):

Invasive Plant Species (Common Names):

Representative Photo(s):





Field Data Sheet





Field Data Sheet

Notes :

Field harvested, tilled, and possibly sowed since previous season

Do you need to report observations of another open field?

No



Field Data Sheet

Weather Conditions at End of Survey

Temperature (°F): 77

Wind Speed (mph): 0 – 1 (Calm; Smoke rises vertically)

Wind Direction: NNW

Cloud Cover: None (Clear)

Visibility: Good (10+ miles; clear)

Precipitation: None (Clear)

Weather Notes:

Were there any notable weather events/changes during the survey? No

Bird Observation Summary

Were any Endangered/Threatened Species observed?

No

Were any Species of Special Concern observed?

Yes

Were probable, possible, or confirmed breeding behaviors observed for any Listed Species (Endangered/Threatened/Special Concern)?

No

Were there additional photos documenting birds observed, habitat conditions, and/or other features of interest?

No

Additional Photo(s):

Were any alternate point count survey locations used due to access or visual constraints?

No

Alternate Point Count Survey Locations:



Field Data Sheet

**Incidental bird species observed outside of timed point count surveys
(Alpha Codes or Common Names):**

TUVU, RTHA

Overall Survey Notes:



Field Data Sheet

Breeding Bird Survey

Submitted By: mbaber@edrdpc.com

Submitted Time: June 2, 2023 12:44 PM

Survey Information

Project Name: Agricola Wind

Survey Date: June 2, 2023

Surveyor Name: Max Baber

Points Surveyed: 47, 49, 50, 62-69

Survey Start Time: 07:08

Survey End Time: 10:42

Weather Conditions at Start of Survey

Temperature (°F): 64

Wind Speed (mph): 1 – 3 (Light Air; Smoke drifts)

Wind Direction: WNW

Cloud Cover: Mostly Clear (10-25%)

Visibility: Good (10+ miles; clear)

Precipitation: None (Clear)

Weather Notes:



Field Data Sheet

Open Field Condition Observations

Corresponding Point ID(s): 47

Anthropogenic Disturbance/Management Practices: Traffic Noise

Primary Open Field Cover Type: Row Cropland (Active)

Estimated Grass Cover (%): 1-10%

Estimated Forb Cover (%): 1-10%

Estimated Woody Vegetation Cover (%): None

Estimated Bare Ground (%): 90-100%

Estimated Litter Depth (inches): None

Average Vegetation Height (inches): 0-2

Dominant Plant Species (Common Names): Corn

Invasive Plant Species (Common Names):

Representative Photo(s):





Field Data Sheet





Field Data Sheet

Notes :

Do you need to report observations of another open field?

Yes



Field Data Sheet

Corresponding Point ID(s): 50

Anthropogenic Disturbance/Management Practices: Traffic Noise

Primary Open Field Cover Type: Row Cropland (Active)

Estimated Grass Cover (%): 1-10%

Estimated Forb Cover (%): 1-10%

Estimated Woody Vegetation Cover (%): None

Estimated Bare Ground (%): 90-100%

Estimated Litter Depth (inches): None

Average Vegetation Height (inches): 2-4

Dominant Plant Species (Common Names): Corn

Invasive Plant Species (Common Names):

Representative Photo(s):





Field Data Sheet





Field Data Sheet

Notes :

Do you need to report observations of another open field?

Yes



Field Data Sheet

Corresponding Point ID(s): 49

Anthropogenic Disturbance/Management Practices: Farm Equipment Noise

Primary Open Field Cover Type: Row Cropland (Active)

Estimated Grass Cover (%): 1-10%

Estimated Forb Cover (%): 1-10%

Estimated Woody Vegetation Cover (%): None

Estimated Bare Ground (%): 90-100%

Estimated Litter Depth (inches): None

Average Vegetation Height (inches): 4-6

Dominant Plant Species (Common Names): Corn, milkweed

Invasive Plant Species (Common Names):

Representative Photo(s):





Field Data Sheet





Field Data Sheet

Notes :

Do you need to report observations of another open field?

Yes



Field Data Sheet

Corresponding Point ID(s): 67

Anthropogenic Disturbance/Management Practices: Farm Equipment Noise

Primary Open Field Cover Type: Row Cropland (Active)

Estimated Grass Cover (%): 1-10%

Estimated Forb Cover (%): 1-10%

Estimated Woody Vegetation Cover (%): None

Estimated Bare Ground (%): 90-100%

Estimated Litter Depth (inches): None

Average Vegetation Height (inches): 4-6

Dominant Plant Species (Common Names): Corn

Invasive Plant Species (Common Names):

Representative Photo(s):





Field Data Sheet





Field Data Sheet

Notes :

Do you need to report observations of another open field?

Yes



Field Data Sheet

Corresponding Point ID(s): 64

Anthropogenic Disturbance/Management Practices: Farm Equipment Noise

Primary Open Field Cover Type: Field Cropland (including hay, wheat, oats, etc.)

Estimated Grass Cover (%): 25-50%

Estimated Forb Cover (%): 25-50%

Estimated Woody Vegetation Cover (%): None

Estimated Bare Ground (%): 10-25%

Estimated Litter Depth (inches): None

Average Vegetation Height (inches): 18-24

Dominant Plant Species (Common Names): Wheat, vetch

Invasive Plant Species (Common Names):

Representative Photo(s):





Field Data Sheet





Field Data Sheet

Notes :

Do you need to report observations of another open field?

Yes



Field Data Sheet

Corresponding Point ID(s): 65

Anthropogenic Disturbance/Management Practices: None notable

Primary Open Field Cover Type: Row Cropland (Active)

Estimated Grass Cover (%): None

Estimated Forb Cover (%): None

Estimated Woody Vegetation Cover (%): None

Estimated Bare Ground (%): 90-100%

Estimated Litter Depth (inches): None

Average Vegetation Height (inches): 0 (None)

Dominant Plant Species (Common Names):

Invasive Plant Species (Common Names):

Representative Photo(s):





Field Data Sheet





Field Data Sheet

Notes :

Do you need to report observations of another open field?

Yes



Field Data Sheet

Corresponding Point ID(s): 66

Anthropogenic Disturbance/Management Practices: None notable

Primary Open Field Cover Type: Row Cropland (Active)

Estimated Grass Cover (%): None

Estimated Forb Cover (%): None

Estimated Woody Vegetation Cover (%): None

Estimated Bare Ground (%): 90-100%

Estimated Litter Depth (inches): None

Average Vegetation Height (inches): 0 (None)

Dominant Plant Species (Common Names):

Invasive Plant Species (Common Names):

Representative Photo(s):





Field Data Sheet





Field Data Sheet

Notes :

Do you need to report observations of another open field?

Yes



Field Data Sheet

Corresponding Point ID(s): 68

Anthropogenic Disturbance/Management Practices: None notable

Primary Open Field Cover Type: Row Cropland (Active)

Estimated Grass Cover (%): 1-10%

Estimated Forb Cover (%): 1-10%

Estimated Woody Vegetation Cover (%): None

Estimated Bare Ground (%): 90-100%

Estimated Litter Depth (inches): None

Average Vegetation Height (inches): 6-12

Dominant Plant Species (Common Names): Grasses, purple dead nettle

Invasive Plant Species (Common Names):

Representative Photo(s):





Field Data Sheet





Field Data Sheet

Notes :

Do you need to report observations of another open field?

Yes



Field Data Sheet

Corresponding Point ID(s): 69

Anthropogenic Disturbance/Management Practices: Farm Equipment Noise

Primary Open Field Cover Type: Row Cropland (Active)

Estimated Grass Cover (%): 1-10%

Estimated Forb Cover (%): None

Estimated Woody Vegetation Cover (%): None

Estimated Bare Ground (%): 90-100%

Estimated Litter Depth (inches): None

Average Vegetation Height (inches): 0 (None)

Dominant Plant Species (Common Names): Corn

Invasive Plant Species (Common Names):

Representative Photo(s):





Field Data Sheet





Field Data Sheet

Notes :

Survey ended two minutes early when bull approached fence

Do you need to report observations of another open field?

Yes



Field Data Sheet

Corresponding Point ID(s): 62

Anthropogenic Disturbance/Management Practices: None notable

Primary Open Field Cover Type: Row Cropland (Active)

Estimated Grass Cover (%): 1-10%

Estimated Forb Cover (%): None

Estimated Woody Vegetation Cover (%): None

Estimated Bare Ground (%): 90-100%

Estimated Litter Depth (inches): None

Average Vegetation Height (inches): 4-6

Dominant Plant Species (Common Names): Corn

Invasive Plant Species (Common Names):

Representative Photo(s):





Field Data Sheet





Field Data Sheet

Notes :

Do you need to report observations of another open field?

Yes



Field Data Sheet

Corresponding Point ID(s): 63

Anthropogenic Disturbance/Management Practices: None notable

Primary Open Field Cover Type: Field Cropland (including hay, wheat, oats, etc.)

Estimated Grass Cover (%): 25-50%

Estimated Forb Cover (%): 50-90%

Estimated Woody Vegetation Cover (%): None

Estimated Bare Ground (%): None

Estimated Litter Depth (inches): 1-3"

Average Vegetation Height (inches): 18-24

Dominant Plant Species (Common Names): Bedstraw, clover, goldenrod, grasses

Invasive Plant Species (Common Names):

Representative Photo(s):





Field Data Sheet





Field Data Sheet

Notes :

Do you need to report observations of another open field?

No



Field Data Sheet

Weather Conditions at End of Survey

Temperature (°F): 79

Wind Speed (mph): 4 – 7 (Light Breeze; Leaves rustle)

Wind Direction: NW

Cloud Cover: None (Clear)

Visibility: Good (10+ miles; clear)

Precipitation: None (Clear)

Weather Notes:

Were there any notable weather events/changes during the survey? No

Bird Observation Summary

Were any Endangered/Threatened Species observed?

No

Were any Species of Special Concern observed?

Yes

Were probable, possible, or confirmed breeding behaviors observed for any Listed Species (Endangered/Threatened/Special Concern)?

No

Were there additional photos documenting birds observed, habitat conditions, and/or other features of interest?

No

Additional Photo(s):

Were any alternate point count survey locations used due to access or visual constraints?

No

Alternate Point Count Survey Locations:



Field Data Sheet

**Incidental bird species observed outside of timed point count surveys
(Alpha Codes or Common Names):**

TRES, EABL

Overall Survey Notes:



Field Data Sheet

Breeding Bird Survey

Submitted By: mbaber@edrdpc.com

Submitted Time: June 6, 2023 3:25 PM

Survey Information

Project Name: Agricola Wind

Survey Date: June 6, 2023

Surveyor Name: Max Baber

Points Surveyed: 16, 19-38

Survey Start Time: 05:10

Survey End Time: 10:31

Weather Conditions at Start of Survey

Temperature (°F): 49

Wind Speed (mph): 1 – 3 (Light Air; Smoke drifts)

Wind Direction: N

Cloud Cover: Overcast (90-100%)

Visibility: Fair (0.62-10 miles; mist or light/moderate precipitation)

Precipitation: None (Clear)

Weather Notes: Low air quality due to smoke



Field Data Sheet

Open Field Condition Observations

Corresponding Point ID(s): 16

Anthropogenic Disturbance/Management Practices: None notable

Primary Open Field Cover Type: Row Cropland (Active)

Estimated Grass Cover (%): None

Estimated Forb Cover (%): None

Estimated Woody Vegetation Cover (%): None

Estimated Bare Ground (%): 90-100%

Estimated Litter Depth (inches): None

Average Vegetation Height (inches): 0 (None)

Dominant Plant Species (Common Names):

Invasive Plant Species (Common Names):

Representative Photo(s):





Field Data Sheet





Field Data Sheet

Notes :

Do you need to report observations of another open field?

Yes



Field Data Sheet

Corresponding Point ID(s): 19

Anthropogenic Disturbance/Management Practices: None notable

Primary Open Field Cover Type: Row Cropland (Active)

Estimated Grass Cover (%): None

Estimated Forb Cover (%): None

Estimated Woody Vegetation Cover (%): None

Estimated Bare Ground (%): 90-100%

Estimated Litter Depth (inches): None

Average Vegetation Height (inches): 0 (None)

Dominant Plant Species (Common Names):

Invasive Plant Species (Common Names):

Representative Photo(s):





Field Data Sheet





Field Data Sheet

Notes :

Do you need to report observations of another open field?

Yes



Field Data Sheet

Corresponding Point ID(s): 21

Anthropogenic Disturbance/Management Practices: None notable

Primary Open Field Cover Type: Row Cropland (Active)

Estimated Grass Cover (%): None

Estimated Forb Cover (%): None

Estimated Woody Vegetation Cover (%): None

Estimated Bare Ground (%): 90-100%

Estimated Litter Depth (inches): None

Average Vegetation Height (inches): 0 (None)

Dominant Plant Species (Common Names):

Invasive Plant Species (Common Names):

Representative Photo(s):





Field Data Sheet





Field Data Sheet

Notes :

Do you need to report observations of another open field?

Yes



Field Data Sheet

Corresponding Point ID(s): 20

Anthropogenic Disturbance/Management Practices: None notable

Primary Open Field Cover Type: Row Cropland (Active)

Estimated Grass Cover (%): None

Estimated Forb Cover (%): None

Estimated Woody Vegetation Cover (%): None

Estimated Bare Ground (%): 90-100%

Estimated Litter Depth (inches): None

Average Vegetation Height (inches): 0 (None)

Dominant Plant Species (Common Names):

Invasive Plant Species (Common Names):

Representative Photo(s):





Field Data Sheet





Field Data Sheet

Notes :

Do you need to report observations of another open field?

Yes



Field Data Sheet

Corresponding Point ID(s): 36

Anthropogenic Disturbance/Management Practices: Traffic Noise

Primary Open Field Cover Type: Field Cropland (including hay, wheat, oats, etc.)

Estimated Grass Cover (%): 10-25%

Estimated Forb Cover (%): 50-90%

Estimated Woody Vegetation Cover (%): None

Estimated Bare Ground (%): 10-25%

Estimated Litter Depth (inches): None

Average Vegetation Height (inches): 4-6

Dominant Plant Species (Common Names): Vetch

Invasive Plant Species (Common Names):

Representative Photo(s):





Field Data Sheet





Field Data Sheet

Notes :

Do you need to report observations of another open field?

Yes



Field Data Sheet

Corresponding Point ID(s): 37

Anthropogenic Disturbance/Management Practices: Traffic Noise

Primary Open Field Cover Type: Field Cropland (including hay, wheat, oats, etc.)

Estimated Grass Cover (%): 1-10%

Estimated Forb Cover (%): 50-90%

Estimated Woody Vegetation Cover (%): None

Estimated Bare Ground (%): 25-50%

Estimated Litter Depth (inches): None

Average Vegetation Height (inches): 4-6

Dominant Plant Species (Common Names): Vetch

Invasive Plant Species (Common Names):

Representative Photo(s):





Field Data Sheet





Field Data Sheet

Notes :

Do you need to report observations of another open field?

Yes



Field Data Sheet

Corresponding Point ID(s): 38

Anthropogenic Disturbance/Management Practices: Traffic Noise

Primary Open Field Cover Type: Field Cropland (including hay, wheat, oats, etc.)

Estimated Grass Cover (%): None

Estimated Forb Cover (%): 50-90%

Estimated Woody Vegetation Cover (%): None

Estimated Bare Ground (%): 25-50%

Estimated Litter Depth (inches): None

Average Vegetation Height (inches): 4-6

Dominant Plant Species (Common Names): Vetch

Invasive Plant Species (Common Names):

Representative Photo(s):





Field Data Sheet





Field Data Sheet

Notes :

Do you need to report observations of another open field?

Yes



Field Data Sheet

Corresponding Point ID(s): 34

Anthropogenic Disturbance/Management Practices: Traffic Noise

Primary Open Field Cover Type: Field Cropland (including hay, wheat, oats, etc.)

Estimated Grass Cover (%): 25-50%

Estimated Forb Cover (%): 25-50%

Estimated Woody Vegetation Cover (%): None

Estimated Bare Ground (%): 10-25%

Estimated Litter Depth (inches): 0-1"

Average Vegetation Height (inches): 6-12

Dominant Plant Species (Common Names): Grasses, vetch, clover

Invasive Plant Species (Common Names):

Representative Photo(s):





Field Data Sheet





Field Data Sheet

Notes :

Do you need to report observations of another open field?

Yes



Field Data Sheet

Corresponding Point ID(s): 35

Anthropogenic Disturbance/Management Practices: Traffic Noise

Primary Open Field Cover Type: Row Cropland (Active)

Estimated Grass Cover (%): 1-10%

Estimated Forb Cover (%): None

Estimated Woody Vegetation Cover (%): None

Estimated Bare Ground (%): 90-100%

Estimated Litter Depth (inches): None

Average Vegetation Height (inches): 6-12

Dominant Plant Species (Common Names): Corn

Invasive Plant Species (Common Names):

Representative Photo(s):





Field Data Sheet





Field Data Sheet

Notes :

Do you need to report observations of another open field?

Yes



Field Data Sheet

Corresponding Point ID(s): 30

Anthropogenic Disturbance/Management Practices: Traffic Noise

Primary Open Field Cover Type: Field Cropland (including hay, wheat, oats, etc.)

Estimated Grass Cover (%): 1-10%

Estimated Forb Cover (%): 50-90%

Estimated Woody Vegetation Cover (%): None

Estimated Bare Ground (%): 25-50%

Estimated Litter Depth (inches): None

Average Vegetation Height (inches): 4-6

Dominant Plant Species (Common Names): Vetch

Invasive Plant Species (Common Names):

Representative Photo(s):





Field Data Sheet





Field Data Sheet

Notes :

Do you need to report observations of another open field?

Yes



Field Data Sheet

Corresponding Point ID(s): 29

Anthropogenic Disturbance/Management Practices: Traffic Noise

Primary Open Field Cover Type: Field Cropland (including hay, wheat, oats, etc.)

Estimated Grass Cover (%): 25-50%

Estimated Forb Cover (%): 50-90%

Estimated Woody Vegetation Cover (%): None

Estimated Bare Ground (%): 1-10%

Estimated Litter Depth (inches): 0-1"

Average Vegetation Height (inches): 4-6

Dominant Plant Species (Common Names): Vetch, grasses

Invasive Plant Species (Common Names):

Representative Photo(s):





Field Data Sheet





Field Data Sheet

Notes :

Do you need to report observations of another open field?

Yes



Field Data Sheet

Corresponding Point ID(s): 25

Anthropogenic Disturbance/Management Practices: Traffic Noise

Primary Open Field Cover Type: Field Cropland (including hay, wheat, oats, etc.)

Estimated Grass Cover (%): None

Estimated Forb Cover (%): 50-90%

Estimated Woody Vegetation Cover (%): None

Estimated Bare Ground (%): 25-50%

Estimated Litter Depth (inches): None

Average Vegetation Height (inches): 4-6

Dominant Plant Species (Common Names): Vetch, mustard

Invasive Plant Species (Common Names):

Representative Photo(s):





Field Data Sheet





Field Data Sheet

Notes :

Do you need to report observations of another open field?

Yes



Field Data Sheet

Corresponding Point ID(s): 27

Anthropogenic Disturbance/Management Practices: Traffic Noise

Primary Open Field Cover Type: Row Cropland (Active)

Estimated Grass Cover (%): 1-10%

Estimated Forb Cover (%): None

Estimated Woody Vegetation Cover (%): None

Estimated Bare Ground (%): 90-100%

Estimated Litter Depth (inches): None

Average Vegetation Height (inches): 6-12

Dominant Plant Species (Common Names): Corn

Invasive Plant Species (Common Names):

Representative Photo(s):





Field Data Sheet





Field Data Sheet

Notes :

Do you need to report observations of another open field?

Yes



Field Data Sheet

Corresponding Point ID(s): 28

Anthropogenic Disturbance/Management Practices: Traffic Noise

Primary Open Field Cover Type: Row Cropland (Active)

Estimated Grass Cover (%): 1-10%

Estimated Forb Cover (%): None

Estimated Woody Vegetation Cover (%): None

Estimated Bare Ground (%): 90-100%

Estimated Litter Depth (inches): None

Average Vegetation Height (inches): 4-6

Dominant Plant Species (Common Names): Corn

Invasive Plant Species (Common Names):

Representative Photo(s):





Field Data Sheet





Field Data Sheet

Notes :

Do you need to report observations of another open field?

Yes



Field Data Sheet

Corresponding Point ID(s): 26

Anthropogenic Disturbance/Management Practices: Traffic Noise

Primary Open Field Cover Type: Row Cropland (Active)

Estimated Grass Cover (%): 1-10%

Estimated Forb Cover (%): None

Estimated Woody Vegetation Cover (%): None

Estimated Bare Ground (%): 90-100%

Estimated Litter Depth (inches): None

Average Vegetation Height (inches): 6-12

Dominant Plant Species (Common Names): Corn

Invasive Plant Species (Common Names):

Representative Photo(s):





Field Data Sheet





Field Data Sheet

Notes :

Do you need to report observations of another open field?

Yes



Field Data Sheet

Corresponding Point ID(s): 24

Anthropogenic Disturbance/Management Practices: Traffic Noise

Primary Open Field Cover Type: Row Cropland (Active)

Estimated Grass Cover (%): 1-10%

Estimated Forb Cover (%): None

Estimated Woody Vegetation Cover (%): None

Estimated Bare Ground (%): 90-100%

Estimated Litter Depth (inches): None

Average Vegetation Height (inches): 4-6

Dominant Plant Species (Common Names): Corn

Invasive Plant Species (Common Names):

Representative Photo(s):





Field Data Sheet





Field Data Sheet

Notes :

Do you need to report observations of another open field?

Yes



Field Data Sheet

Corresponding Point ID(s): 23

Anthropogenic Disturbance/Management Practices: Traffic Noise

Primary Open Field Cover Type: Row Cropland (Active)

Estimated Grass Cover (%): 1-10%

Estimated Forb Cover (%): None

Estimated Woody Vegetation Cover (%): None

Estimated Bare Ground (%): 90-100%

Estimated Litter Depth (inches): None

Average Vegetation Height (inches): 4-6

Dominant Plant Species (Common Names): Corn

Invasive Plant Species (Common Names):

Representative Photo(s):





Field Data Sheet





Field Data Sheet

Notes :

Do you need to report observations of another open field?

Yes



Field Data Sheet

Corresponding Point ID(s): 22

Anthropogenic Disturbance/Management Practices: Traffic Noise

Primary Open Field Cover Type: Row Cropland (Active)

Estimated Grass Cover (%): 1-10%

Estimated Forb Cover (%): None

Estimated Woody Vegetation Cover (%): None

Estimated Bare Ground (%): 90-100%

Estimated Litter Depth (inches): None

Average Vegetation Height (inches): 4-6

Dominant Plant Species (Common Names): Corn

Invasive Plant Species (Common Names):

Representative Photo(s):

