

Agricola Wind Project
Towns of Scipio and Venice, Cayuga
County, New York

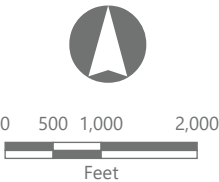
Visual Impact Assessment

- Viewpoint Location
- Simulation Viewpoint
- Wireframe Viewpoint
- Potential MET Tower Visibility
- MET Tower 4-Mile Study Area
- Potential ADLS Tower Visibility
- ADLS 4-Mile Study Area
- Interconnection Facility 4-Mile Study Area
- 5-Mile Study Area
- Landscape Similarity Zone
 - Agricultural/Rural Residential
 - Forest
 - Hamlet
 - Owasco Flats
 - Owasco Lake

		1	
2		3	4
5		6	7
8		9	10
11		12	13

*Sheets shown in grey in the sheet locator inset are not included herein as they do not overlap the ancillary facility study areas.

Sheet 7 of 13



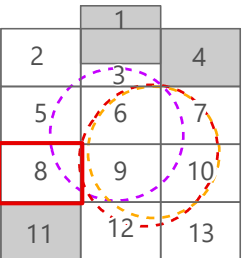
Prepared November 1, 2024
Basemap: Esri "World Topo Map" map service

Potential ancillary facility viewshed visibility is based on the screening effects of topography, vegetation, and structures as represented in NYSITS (2018 and 2020) and FEMA (2012 and 2019) lidar datasets and the maximum height of each ancillary facility.

Agricola Wind Project
Towns of Scipio and Venice, Cayuga County, New York

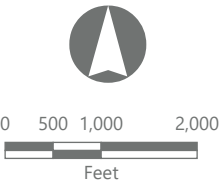
Visual Impact Assessment

- Viewpoint Location
- Potential MET Tower Visibility
- MET Tower 4-Mile Study Area
- Potential Interconnection Facility Visibility
- Interconnection Facility 4-Mile Study Area
- 5-Mile Study Area
- Landscape Similarity Zone
 - Agricultural/Rural Residential
 - Forest
 - Hamlet



*Sheets shown in grey in the sheet locator inset are not included herein as they do not overlap the ancillary facility study areas.

Sheet 8 of 13

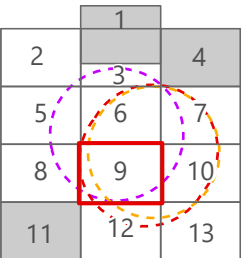


Prepared November 1, 2024
Basemap: Esri "World Topo Map" map service
Potential ancillary facility viewshed visibility is based on the screening effects of topography, vegetation, and structures as represented in NYSITS (2018 and 2020) and FEMA (2012 and 2019) lidar datasets and the maximum height of each ancillary facility.

Agricola Wind Project
Towns of Scipio and Venice, Cayuga
County, New York

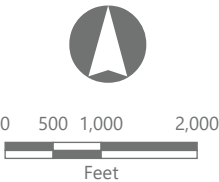
Visual Impact Assessment

- Viewpoint Location
- Simulation Viewpoint
- Wireframe Viewpoint
- Wind Turbine
- MET Tower
- Potential MET Tower Visibility
- MET Tower 4-Mile Study Area
- ADLS Tower
- Potential ADLS Tower Visibility
- ADLS 4-Mile Study Area
- Potential Interconnection Facility Visibility
- Interconnection Facility 4-Mile Study Area
- Facility Site
- 5-Mile Study Area
- Landscape Similarity Zone
- Agricultural/Rural Residential
- Forest
- Hamlet



*Sheets shown in grey in the sheet locator inset are not included herein as they do not overlap the ancillary facility study areas.

Sheet 9 of 13



Prepared November 1, 2024
Basemap: Esri "World Topo Map" map service

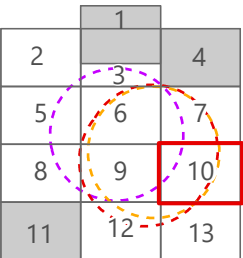
Potential ancillary facility viewshed visibility is based on the screening effects of topography, vegetation, and structures as represented in NYSITS (2018 and 2020) and FEMA (2012 and 2019) lidar datasets and the maximum height of each ancillary facility.

Agricola Wind Project
Towns of Scipio and Venice, Cayuga
County, New York

Visual Impact Assessment

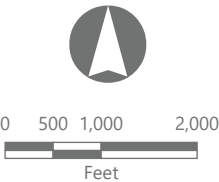
- Viewpoint Location
- Wireframe Viewpoint
- Potential MET Tower Visibility
- MET Tower 4-Mile Study Area
- Potential ADLS Tower Visibility
- ADLS 4-Mile Study Area
- Interconnection Facility 4-Mile Study Area
- 5-Mile Study Area
- Landscape Similarity Zone

- Agricultural/Rural Residential
- Forest
- Hamlet
- Owasco Flats
- Village



*Sheets shown in grey in the sheet locator inset are not included herein as they do not overlap the ancillary facility study areas.

Sheet 10 of 13



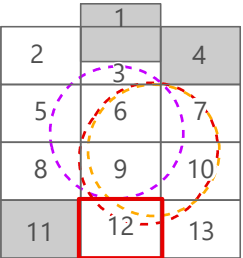
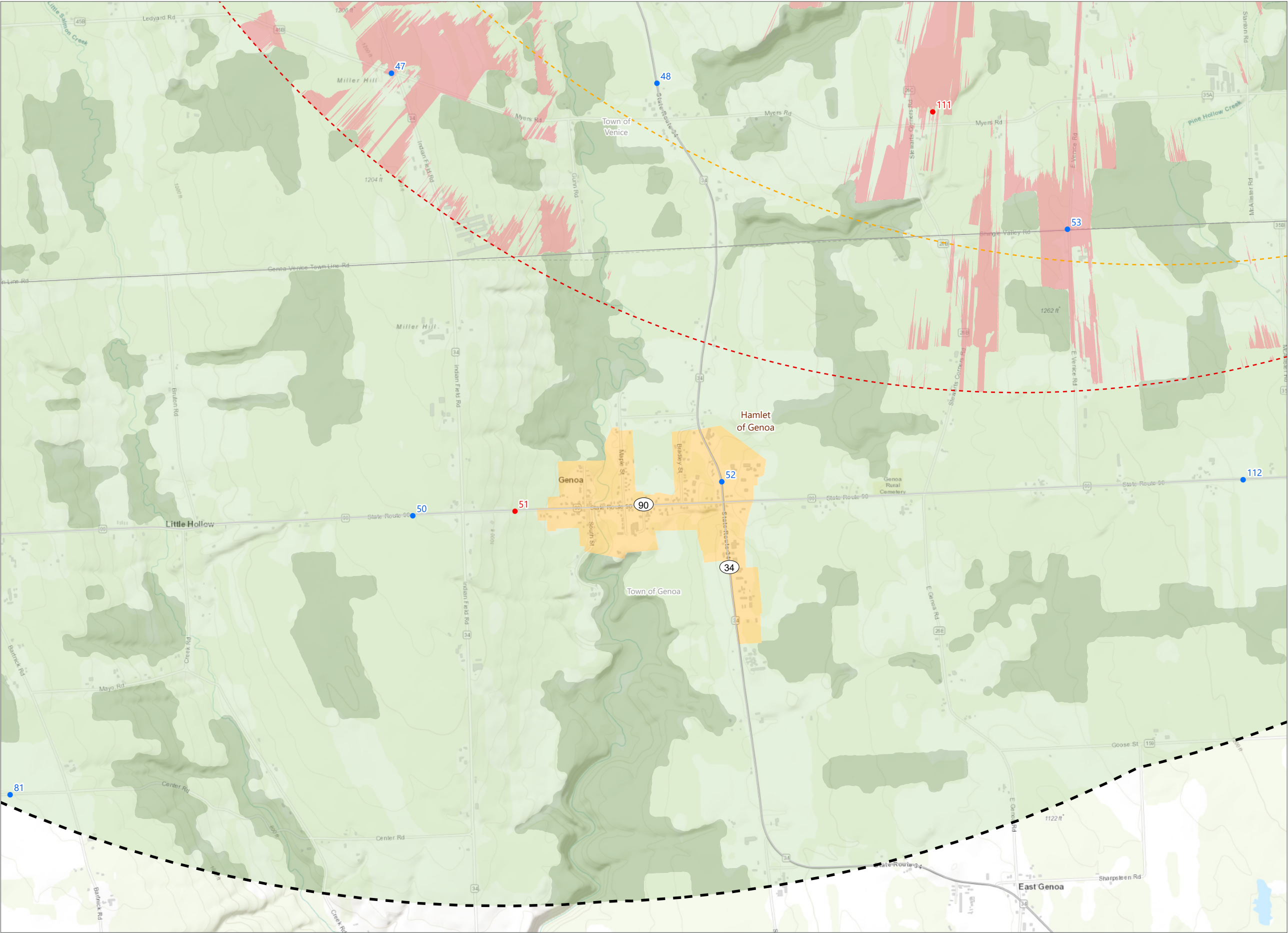
Prepared November 1, 2024
Basemap: Esri "World Topo Map" map service

Potential ancillary facility viewshed visibility is based on the screening effects of topography, vegetation, and structures as represented in NYSITS (2018 and 2020) and FEMA (2012 and 2019) lidar datasets and the maximum height of each ancillary facility.

Agricola Wind Project
Towns of Scipio and Venice, Cayuga
County, New York

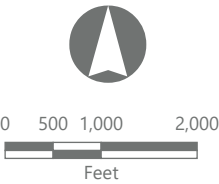
Visual Impact Assessment

- Viewpoint Location
- Simulation Viewpoint
- Potential MET Tower Visibility
- MET Tower 4-Mile Study Area
- ADLS 4-Mile Study Area
- 5-Mile Study Area
- Landscape Similarity Zone
 - Agricultural/Rural Residential
 - Forest
 - Hamlet



*Sheets shown in grey in the sheet locator inset are not included herein as they do not overlap the ancillary facility study areas.

Sheet 12 of 13



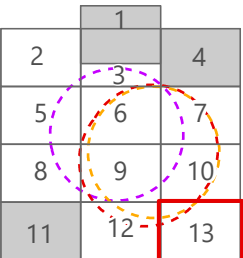
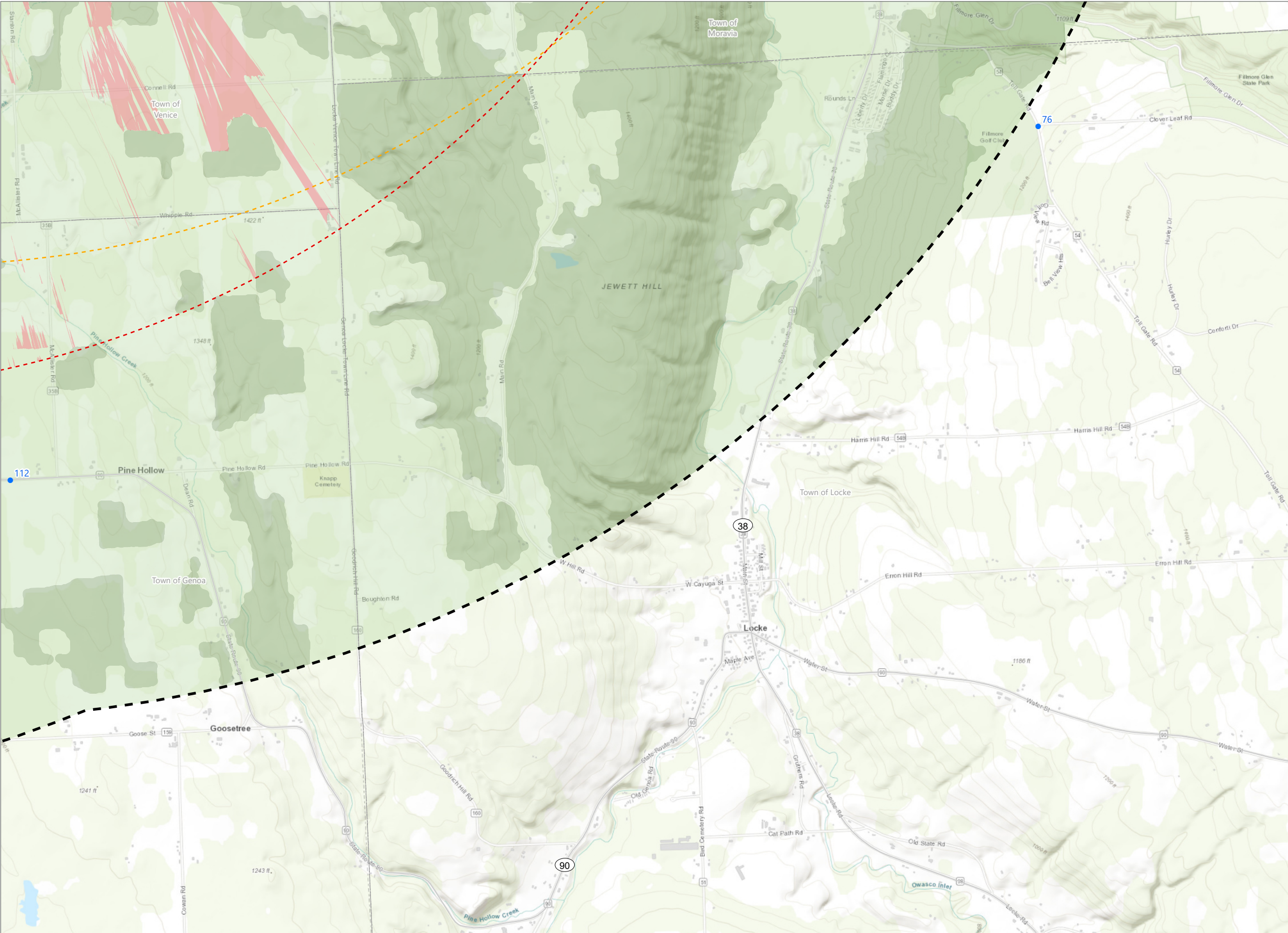
Prepared November 1, 2024
Basemap: Esri "World Topo Map" map service
Potential ancillary facility viewshed visibility is based on the screening effects of topography, vegetation, and structures as represented in NYSITS (2018 and 2020) and FEMA (2012 and 2019) lidar datasets and the maximum height of each ancillary facility.

Agricola Wind Project

Towns of Scipio and Venice, Cayuga County, New York

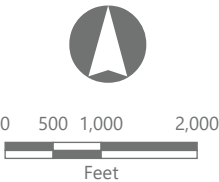
Visual Impact Assessment

- Viewpoint Location
- Potential MET Tower Visibility
- MET Tower 4-Mile Study Area
- ADLS 4-Mile Study Area
- 5-Mile Study Area
- Landscape Similarity Zone
 - Agricultural/Rural Residential
 - Forest



*Sheets shown in grey in the sheet locator inset are not included herein as they do not overlap the ancillary facility study areas.

Sheet 13 of 13



Prepared November 1, 2024
Basemap: Esri "World Topo Map" map service
Potential ancillary facility viewshed visibility is based on the screening effects of topography, vegetation, and structures as represented in NYSITS (2018 and 2020) and FEMA (2012 and 2019) lidar datasets and the maximum height of each ancillary facility.