

EXISTING VIEW



*Note: Printed at actual size, the existing view image is 15 inches wide by 10 inches high. At this size and focal length, the existing view image should be viewed from a distance 21 inches from the eye of the viewer.*



VIEWPOINT 40  
US Route 20

**Hoffman Falls Wind Project**  
Towns of Eaton, Fenner, Nelson, and Smithfield, Madison County, New York





PHOTOSIMULATION



*Note: Printed at actual size, the resulting simulation image is 15 inches wide by 10 inches high. At this size and focal length, the simulation should be viewed from a distance 21 inches from the eye of the viewer.*

0 1in 2 in  
This scale is designed to insure the simulation images are printed at the intended size.

VIEWPOINT 40  
US Route 20

**Hoffman Falls Wind Project**  
Towns of Eaton, Fenner, Nelson, and Smithfield, Madison County, New York





REVISED PHOTOSIMULATION



*Note: Printed at actual size, the resulting simulation image is 15 inches wide by 10 inches high. At this size and focal length, the simulation should be viewed from a distance 21 inches from the eye of the viewer.*

0 1in 2 in  
This scale is designed to insure the simulation images are printed at the intended size.

VIEWPOINT 40  
US Route 20

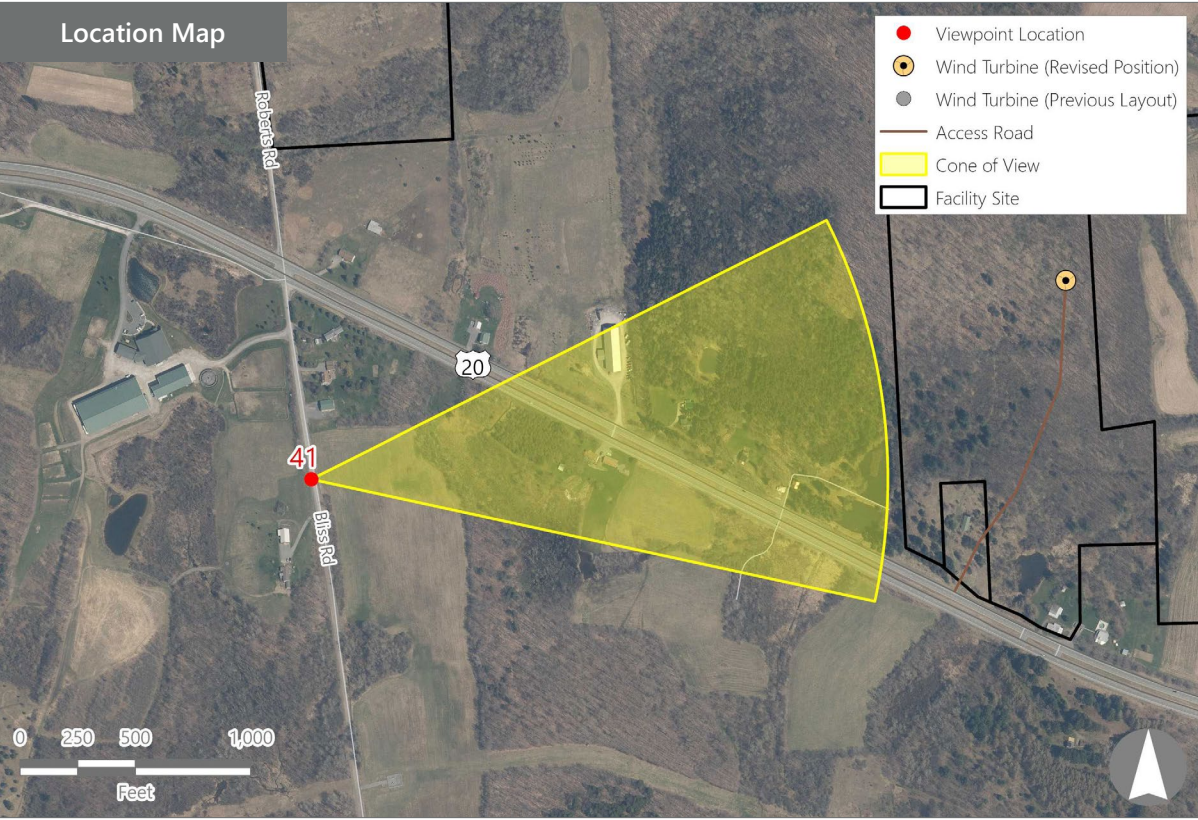
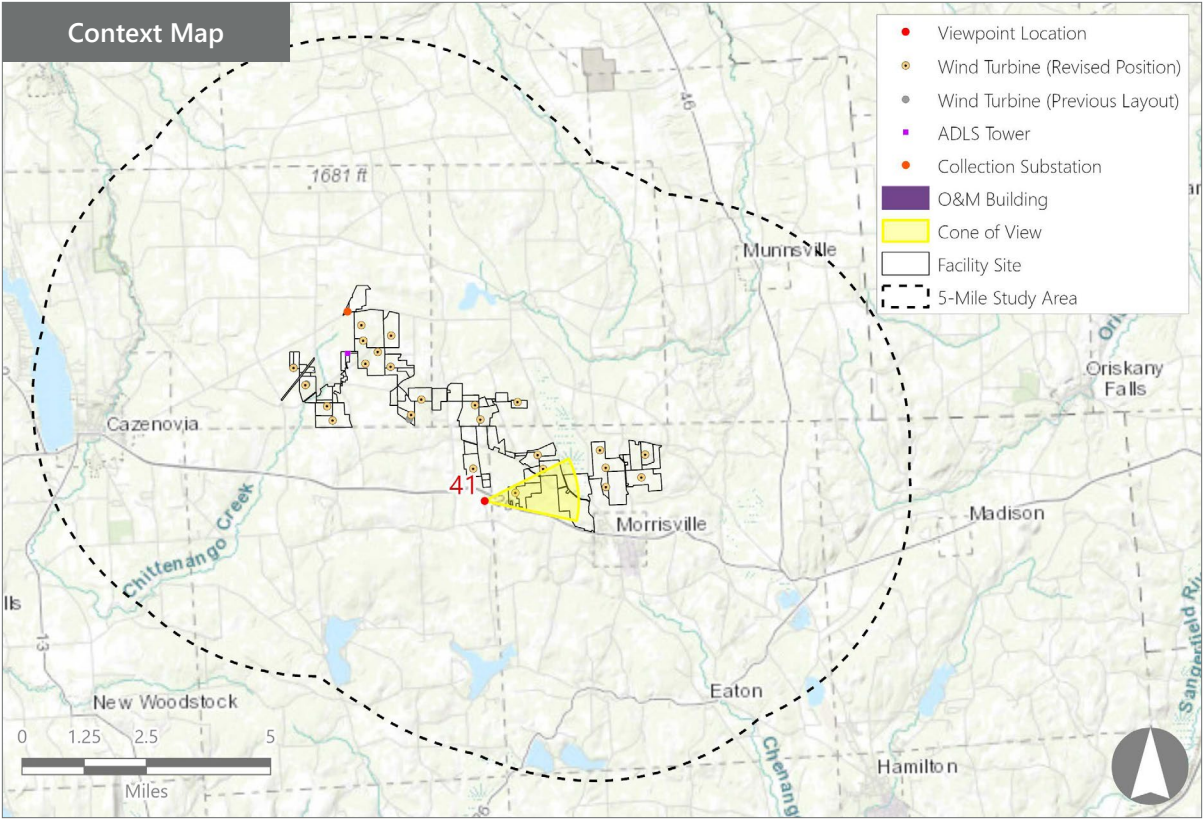
**Hoffman Falls Wind Project**  
Towns of Eaton, Fenner, Nelson, and Smithfield, Madison County, New York







*Note: The image above is a panorama photograph taken from Bliss Road in the Town of Nelson panning clockwise from north (left) to southeast (right). The green rectangle represents the extent of the simulated photograph.*



## Hoffman Falls Wind Project

Towns of Eaton, Fenner, Nelson, and Smithfield, Madison County, New York

Visual Impact Assessment Addendum  
Appendix 8-A

### VIEWPOINT 41

Bliss Road

#### VIEWPOINT INFORMATION

**Location:** Bliss Road

**Town:** Nelson

**County:** Madison

**Latitude:** 42.90950° N

**Longitude:** 75.69829° W

#### LOCATION INFORMATION

**Distance Zone Represented in View:** Middle  
ground

**Viewer Distance\*:** 0.6 mile

**Landscape Similarity Zone:** Agricultural/Rural  
Residential

**Viewer/User Group(s):** Local Residents, Tourists/  
Recreational Users

**Visually Sensitive Resource(s):** State University of  
New York College of Agriculture and Technology at  
Morrisville - Equine Center

#### PHOTOGRAPH INFORMATION

**Date:** August 31, 2023

**Time:** 2:28 PM

**Camera:** Canon EOS 5D Mark IV

**Resolution:** 24 Megapixels

**Lens Focal Length (35mm equivalent):** 50 mm

**Camera Elevation:** 1,701 feet

**Field of View:** 39 degrees

**Direction of View:** East

**Printed Size:** 10" x 15"

**Viewing Distance\*\*:** 21"

#### NOTES

\*Distance as measured from the viewpoint to the  
closest wind turbine generator within the simulated  
photograph's field of view

\*\*The simulation is at the correct perspective when  
printed on an 11 inch by 17 inch sheet at full scale,  
and viewed approximately 21 inches from the eye of  
the viewer.



Viewpoint Sensitivity<sup>1</sup>:

Scenic Quality:

- ☐ Low
- ☒ Moderate
- ☒ High

Viewer Exposure

Frequency:

- ☒ Rare
- ☒ Occasional
- ☒ Regular/Repeated

Duration of View:

- ☒ Short/Brief/Fleeting
- ☒ Moderate
- ☒ Long

<sup>1</sup>Viewpoint Sensitivity information is gathered from rating panel results. Scenic Quality is an average based on Low = 1, Moderate = 2, High = 3. Viewer Exposure reflects all those selected be the review panel.

Contrast Rating Scores<sup>2</sup>:

Component	Score	Contrast Rating
	Install	
Landform	2.3	Moderate/Appreciable
Vegetation	2.2	Moderate
Land Use	2.3	Moderate/Appreciable
Water	N/A	N/A
Sky	2.3	Moderate/Appreciable
Viewer Activity	2.3	Moderate/Appreciable
AVERAGE	2.3	Moderate/Appreciable

<sup>2</sup> Contrast Rating Scale: 0.0 - 0.2 (Insignificant), 0.3 – 0.7 (Insignificant/Minimal), 0.8 – 1.2 (Minimal), 1.3 – 1.7 (Minimal/Moderate), 1.8 - 2.2 (Moderate), 2.3 – 2.7 (Moderate/Appreciable), 2.8 – 3.2 (Appreciable) 3.3 – 3.7 Appreciable/Strong), 3.8 – 4.0 (Strong).

Contrast Rating - Lowest and Highest Scores:

Post - Install		
Component	Score	
	Low	High
Landform	1.0	3.0
Vegetation	1.5	3.0
Land Use	2.0	3.0
Water	NA	NA
Sky	2.0	2.5
Viewer Activity	2.0	3.0

Existing View



Proposed View (Post Installation)



Existing View

Viewpoint 41 is located on Bliss Road in the Town of Madison, approximately 0.6 miles from the nearest proposed wind turbine that would be visible in the selected photo's field of view. This viewpoint is located in the Agricultural/Rural Residential LSZ and is representative of views available to local residents and users of the SUNY Morrisville Equine Center, south of Route 20. The landscape in this area is a mix of rolling fields and forests and the selected view to the east from this location includes an unmowed meadow backed by a forested hillside where glimpses of building rooftops are occasionally visible. The meadow descends from the roadside in the immediate foreground to the edge of the woods in the middle ground. From the woods edge, the forested hillside rises quickly and blocks views of more distant landscape features. The woods line and horizon line are relatively flat, and the selected view lacks any developed features/focal points. As a result, the rating panel indicated that this view has moderate to high scenic quality.

Proposed View

With the proposed Project in place, a single large wind turbine projects into the sky well above the hilltop. This turbine is relatively unscreened and close to the viewer, allowing details of its structure to be easily observed. At this distance, the turbine's scale contrast with the existing landform and vegetation is notable, and it becomes a dominant focal point in the view. Along with this nearby turbine, portions of additional, more distant turbines (in some cases just blade tips) are visible above the hilltop. These turbines add a degree of visual clutter, but also give the view a greater sense of depth and add elements of visual interest. As with the previous viewpoints, views of existing wind turbines are available throughout this area, and distance from a majority of the proposed turbines will limit changes to the character and scenic quality of the view. Although the contrast is indicated to be moderate to appreciable this view will be available to a limited number of viewers.

Hoffman Falls Wind Project

Towns of Eaton, Fenner, Nelson, and Smithfield, Madison County, New York



EXISTING VIEW



*Note: Printed at actual size, the existing view image is 15 inches wide by 10 inches high. At this size and focal length, the existing view image should be viewed from a distance 21 inches from the eye of the viewer.*



VIEWPOINT 41  
Bliss Road

**Hoffman Falls Wind Project**  
Towns of Eaton, Fenner, Nelson, and Smithfield, Madison County, New York





PHOTOSIMULATION



*Note: Printed at actual size, the resulting simulation image is 15 inches wide by 10 inches high. At this size and focal length, the simulation should be viewed from a distance 21 inches from the eye of the viewer.*

0 1 in 2 in  
This scale is designed to insure the simulation images are printed at the intended size.

VIEWPOINT 41  
Bliss Road

**Hoffman Falls Wind Project**  
Towns of Eaton, Fenner, Nelson, and Smithfield, Madison County, New York







Note: The image above is a panorama photograph taken from Brooks Road in the Town of Smithfield panning clockwise from southwest (left) to north (right). The green rectangle represents the extent of the simulated photograph.

VIEWPOINT 42  
Brooks Road

VIEWPOINT INFORMATION

**Location:** Brooks Road  
**Town:** Smithfield  
**County:** Madison  
**Latitude:** 42.93223° N  
**Longitude:** 75.69047° W

LOCATION INFORMATION

**Distance Zone Represented in View:** Foreground  
**Viewer Distance\*:** 0.5 mile  
**Landscape Similarity Zone:** Agricultural/Rural  
Residential  
**Viewer/User Group(s):** Local Residents  
**Visually Sensitive Resource(s):** Erie Canalway  
National Heritage Corridor

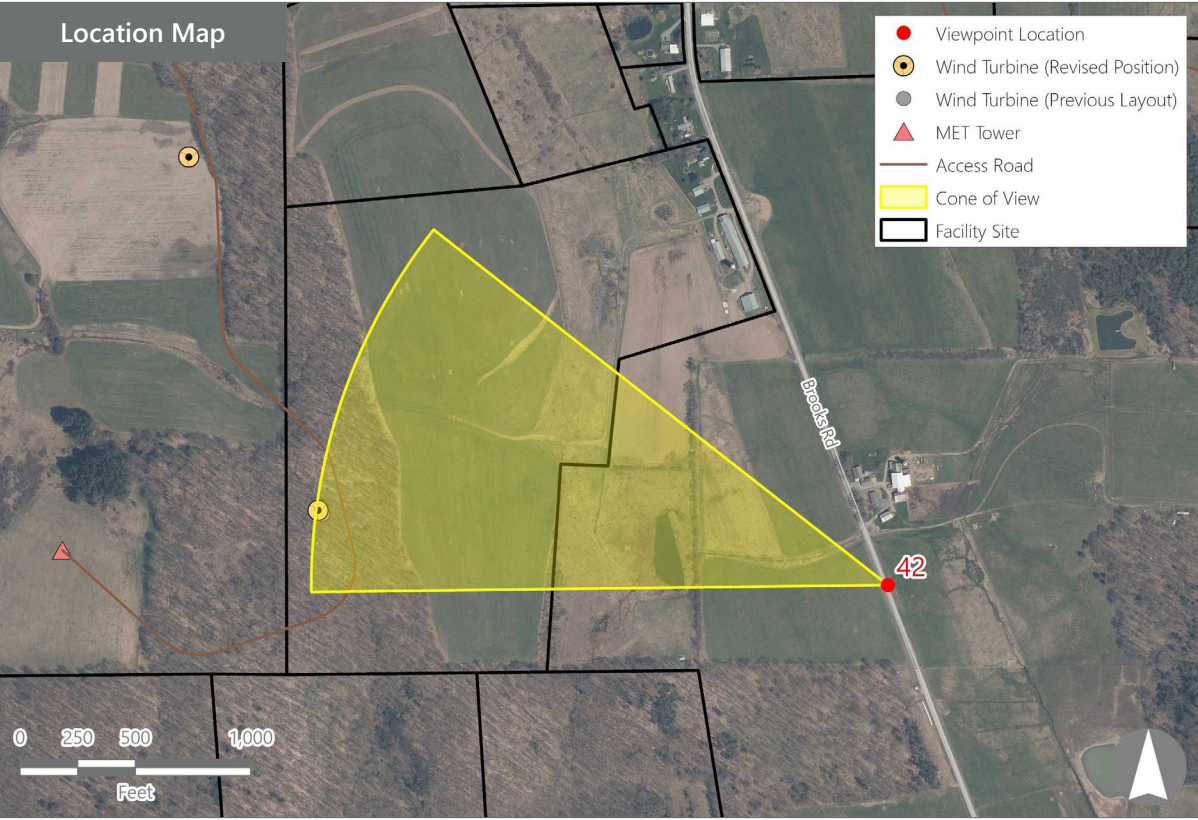
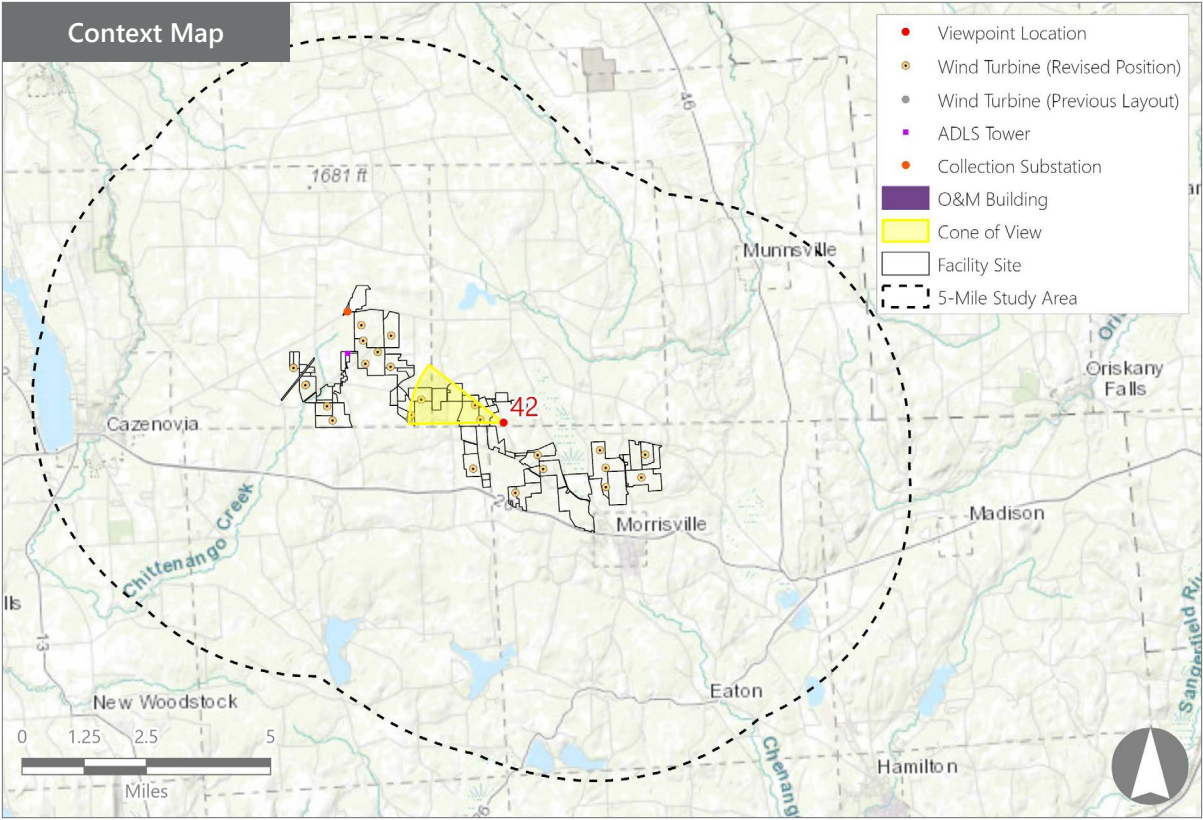
PHOTOGRAPH INFORMATION

**Date:** August 31, 2023  
**Time:** 2:41 PM  
**Camera:** Canon EOS 5D Mark IV  
**Resolution:** 24 Megapixels  
**Lens Focal Length (35mm equivalent):** 50 mm  
**Camera Elevation:** 1,491 feet  
**Field of View:** 39 degrees  
**Direction of View:** Northwest  
**Printed Size:** 10" x 15"  
**Viewing Distance\*\*:** 21"

NOTES

\*Distance as measured from the viewpoint to the closest wind turbine generator within the simulated photograph's field of view

\*\*The simulation is at the correct perspective when printed on an 11 inch by 17 inch sheet at full scale, and viewed approximately 21 inches from the eye of the viewer.



Hoffman Falls Wind Project  
Towns of Eaton, Fenner, Nelson, and Smithfield, Madison County, New York

Visual Impact Assessment Addendum  
Appendix 8-A



Viewpoint Sensitivity<sup>1</sup>:

- Scenic Quality:  
☐ Low  
☒ Moderate  
☒ High
- Viewer Exposure  
Frequency:  
☒ Rare  
☒ Occasional  
☒ Regular/Repeated
- Duration of View:  
☒ Short/Brief/Fleeting  
☐ Moderate  
☒ Long

<sup>1</sup>Viewpoint Sensitivity information is gathered from rating panel results. Scenic Quality is an average based on Low = 1, Moderate = 2, High = 3. Viewer Exposure reflects all those selected by the review panel.

Contrast Rating Scores<sup>2</sup>:

Component	Score	Contrast Rating
	Install	
Landform	2.3	Moderate/Appreciable
Vegetation	2.3	Moderate/Appreciable
Land Use	2.3	Moderate/Appreciable
Water	N/A	N/A
Sky	2.7	Moderate/Appreciable
Viewer Activity	2.5	Moderate/Appreciable
AVERAGE	2.4	Moderate/Appreciable

<sup>2</sup> Contrast Rating Scale: 0.0 - 0.2 (Insignificant), 0.3 - 0.7 (Insignificant/Minimal), 0.8 - 1.2 (Minimal), 1.3 - 1.7 (Minimal/Moderate), 1.8 - 2.2 (Moderate), 2.3 - 2.7 (Moderate/Appreciable), 2.8 - 3.2 (Appreciable) 3.3 - 3.7 Appreciable/Strong), 3.8 - 4.0 (Strong).

Contrast Rating - Lowest and Highest Scores:

Post - Install		
Component	Score	
	Low	High
Landform	0.5	3.5
Vegetation	1.5	3.5
Land Use	2.0	3.0
Water	NA	NA
Sky	2.0	3.0
Viewer Activity	2.0	3.0

Existing View



Proposed View (Post Installation)



Existing View

Viewpoint 42 is located on Brook Road in the Town of Smithfield, approximately 0.5 miles from the nearest proposed wind turbine that would be visible in the selected photo's field of view. This viewpoint is in the Agricultural/Rural Residential LSZ and is representative of views available to residents from their homes and local roads. This portion of the VSA includes a mix of fields and forests interspersed with widely scattered farms and rural homes. The existing view to the northwest from this location features an open hay field in the foreground that rises gently to a broken hedgerow that extends across the middle ground of the view. Beyond the hedgerow, the land continues to rise to a high point where open fields and treetops define the horizon line. These background features, as well as trees in the middle ground hedgerow, block views of other more distant landscape features. The abundance of open fields, elevated viewer perspective, and the clear blue sky overhead give this view an open, expansive feel. It has a strong rural/agricultural character and moderate to appreciable scenic quality.

Proposed View

With the proposed Project in place, a single large wind turbine has been added to the left side of the view. The base of the turbine is screened by vegetation in the middle ground hedgerow, but otherwise it is fully exposed. Due to its proximity to the viewer, the turbine appears tall, and its scale contrast with the existing vegetation is notable. Shadowing and reflection of the sun also increase the turbine's color contrast with the sky. Although trees in the hedgerow represent some other vertical landscape features that extend into the sky, the wind turbine is substantially taller, and becomes a prominent new focal point in this view. Although other developed features occur outside the photo's field of view, the turbine is the only developed feature in the selected photo, and its scale, form, and texture are in contrast with other natural and built features in the area. While the rural/agricultural character of this view will remain, the presence of the single unscreened turbine will alter the view's scenic quality and result in moderate/appreciable contrast.

Hoffman Falls Wind Project

Towns of Eaton, Fenner, Nelson, and Smithfield, Madison County, New York



EXISTING VIEW



*Note: Printed at actual size, the existing view image is 15 inches wide by 10 inches high. At this size and focal length, the existing view image should be viewed from a distance 21 inches from the eye of the viewer.*



VIEWPOINT 42  
Brooks Road

**Hoffman Falls Wind Project**  
Towns of Eaton, Fenner, Nelson, and Smithfield, Madison County, New York





PHOTOSIMULATION



*Note: Printed at actual size, the resulting simulation image is 15 inches wide by 10 inches high. At this size and focal length, the simulation should be viewed from a distance 21 inches from the eye of the viewer.*

0 1 in 2 in  
This scale is designed to insure the simulation images are printed at the intended size.

VIEWPOINT 42  
Brooks Road

**Hoffman Falls Wind Project**  
Towns of Eaton, Fenner, Nelson, and Smithfield, Madison County, New York

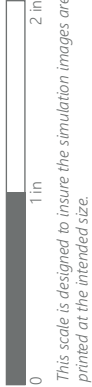




REVISED PHOTOSIMULATION



*Note: Printed at actual size, the resulting simulation image is 15 inches wide by 10 inches high. At this size and focal length, the simulation should be viewed from a distance 21 inches from the eye of the viewer.*



VIEWPOINT 42  
Brooks Road

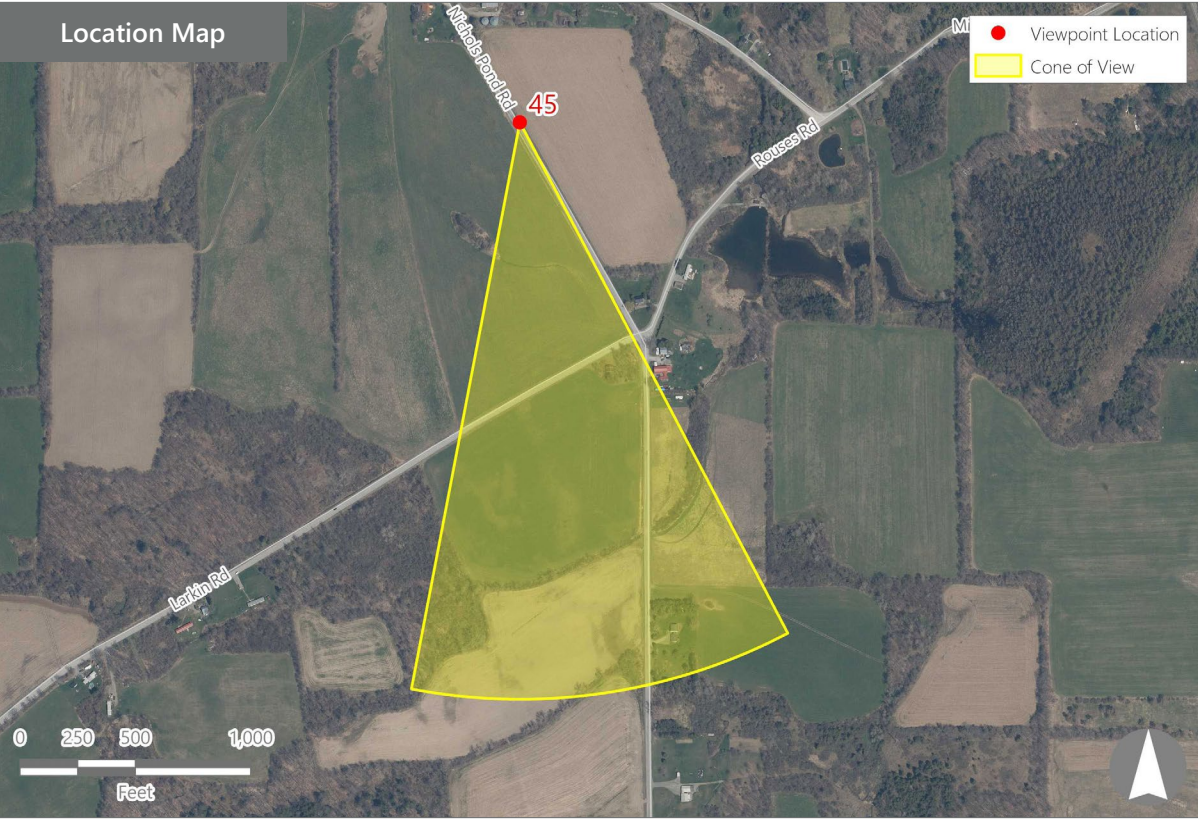
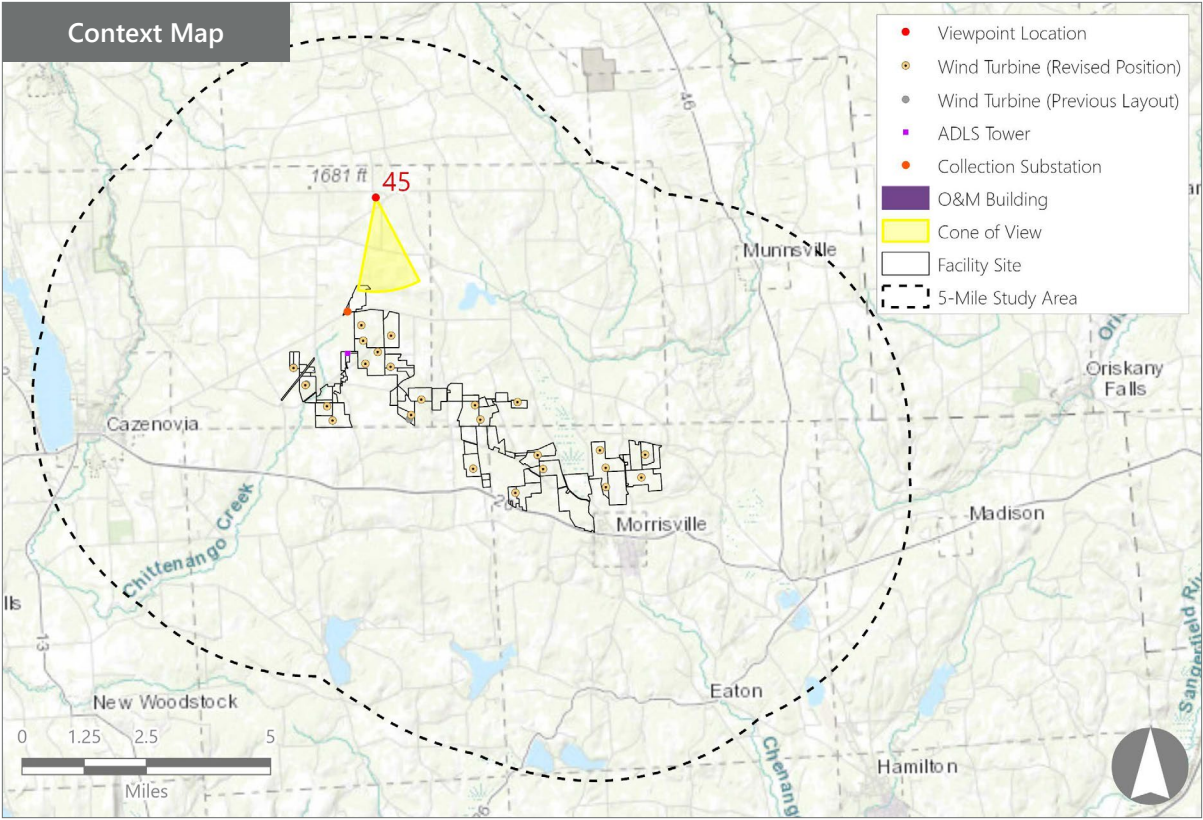
**Hoffman Falls Wind Project**  
Towns of Eaton, Fenner, Nelson, and Smithfield, Madison County, New York







*Note: The image above is a panorama photograph taken from Nichols Pond Road in the Town of Fenner panning clockwise from southeast (left) to northwest (right). The green rectangle represents the extent of the simulated photograph.*



**VIEWPOINT 45**  
Nichols Pond Road

**VIEWPOINT INFORMATION**

**Location:** Nichols Pond Road  
**Town:** Fenner  
**County:** Madison  
**Latitude:** 42.99812° N  
**Longitude:** 75.74024° W

**LOCATION INFORMATION**

**Distance Zone Represented in View:** Middle  
Ground  
**Viewer Distance\*:** 2.6 miles  
**Landscape Similarity Zone:** Agricultural/Rural  
Residential  
**Viewer/User Group(s):** Local Residents  
**Visually Sensitive Resource(s):** Erie Canalway  
National Heritage Corridor

**PHOTOGRAPH INFORMATION**

**Date:** August 31, 2023  
**Time:** 3:10 PM  
**Camera:** Canon EOS 5D Mark IV  
**Resolution:** 24 Megapixels  
**Lens Focal Length (35mm equivalent):** 50 mm  
**Camera Elevation:** 1,355 feet  
**Field of View:** 39 degrees  
**Direction of View:** South  
**Printed Size:** 10" x 15"  
**Viewing Distance\*\*:** 21"

**NOTES**

\*Distance as measured from the viewpoint to the closest wind turbine generator within the simulated photograph's field of view

\*\*The simulation is at the correct perspective when printed on an 11 inch by 17 inch sheet at full scale, and viewed approximately 21 inches from the eye of the viewer.

**Hoffman Falls Wind Project**  
Towns of Eaton, Fenner, Nelson, and Smithfield, Madison County, New York

**Visual Impact Assessment Addendum**  
**Appendix 8-A**



Viewpoint Sensitivity<sup>1</sup>:

Scenic Quality:

- ☐ Low
- ☒ Moderate
- ☐ High

Viewer Exposure

Frequency:

- ☒ Rare
- ☒ Occasional
- ☒ Regular/Repeated

Duration of View:

- ☐ Short/Brief/Fleeting
- ☒ Moderate
- ☒ Long

<sup>1</sup>Viewpoint Sensitivity information is gathered from rating panel results. Scenic Quality is an average based on Low = 1, Moderate = 2, High = 3. Viewer Exposure reflects all those selected by the review panel.

Contrast Rating Scores<sup>2</sup>:

Component	Score	Contrast Rating
	Install	
Landform	2.0	Moderate
Vegetation	2.0	Moderate
Land Use	1.7	Minimal/Moderate
Water	N/A	N/A
Sky	2.3	Moderate/Appreciable
Viewer Activity	1.7	Minimal/Moderate
AVERAGE	1.9	Moderate

<sup>2</sup> Contrast Rating Scale: 0.0 - 0.2 (Insignificant), 0.3 – 0.7 (Insignificant/Minimal), 0.8 – 1.2 (Minimal), 1.3 – 1.7 (Minimal/Moderate), 1.8 - 2.2 (Moderate), 2.3 – 2.7 (Moderate/Appreciable), 2.8 – 3.2 (Appreciable) 3.3 – 3.7 Appreciable/Strong), 3.8 – 4.0 (Strong).

Contrast Rating - Lowest and Highest Scores:

Post - Install		
Component	Score	
	Low	High
Landform	1.0	3.0
Vegetation	1.0	3.0
Land Use	1.0	2.5
Water	NA	NA
Sky	2.0	2.5
Viewer Activity	1.5	2.0

Existing View



Proposed View (Post Installation)



Existing View

Viewpoint 45 is located on Nichols Pond Road in the Town of Fenner, approximately 2.6 miles from the nearest proposed turbine that would be visible in the selected photograph's field of view. This viewpoint occurs in the Agricultural/Rural Residential LSZ and is typical of views available to residents from their homes and local roads. Views in this general area include large, upward sloping, open agricultural fields backed and bordered by woodlots. In the selected photo, the existing view to the south-southeast shows Nichols Road in the immediate foreground extending away from the viewer and out of frame to the left. A band of unmowed herbaceous vegetation borders the road, backed by a mowed agricultural field that extends to a band of forest vegetation in the middle ground. This woods line contains a modest gabled-roof house on the left side of the view. The residence extends into the adjacent agricultural field but is surrounded by thick foliage that partially obscures it. The middle ground band of woods includes a single silo that rises above the tree canopy and the roofs of other buildings. Beyond the tree line a mix of open fields and woodlots rises to the horizon. A transmission line also angles across the woods line and crests the horizon on the right. Two large wind turbines atop the bare crest of the hill appear dark against the light sky and dwarf the transmission line structures. The turbines are the primary focal point in this view, but the silo and residence serve as secondary focal points for the viewer. The rating panel indicated that the existing view has moderate scenic quality.

Proposed View

With the proposed Facility in place, additional more distant wind turbines are now visible above the horizon in the vicinity of the existing turbines. The new turbines are located beyond the crest of the hill and therefore appear somewhat smaller than the existing turbines and present slightly reduced color contrast with the sky. Although the new and existing turbines are clustered and appear to be part of one Facility, the additional turbines increase the intensity of development in the view. Their vertical line and angular form contrasts with the overall horizontality and rolling forms of the existing landscape, and they add visual clutter to the horizon. Open agricultural fields and woodlots in the foreground and middle ground maintain the view's rural agricultural character, and the new turbines do not appear out of character with a working agricultural landscape that already includes wind turbines. However, the larger grouping of turbines spread out across the horizon now make wind energy generation a more dominant land use. According to the rating panel, addition of the new turbines moderately reduces the scenic quality of the view.

Hoffman Falls Wind Project

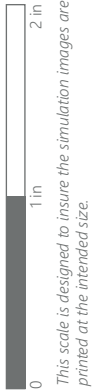
Towns of Eaton, Fenner, Nelson, and Smithfield, Madison County, New York



EXISTING VIEW



*Note: Printed at actual size, the existing view image is 15 inches wide by 10 inches high. At this size and focal length, the existing view image should be viewed from a distance 21 inches from the eye of the viewer.*



VIEWPOINT 45  
Nichols Pond Road

**Hoffman Falls Wind Project**  
Towns of Eaton, Fenner, Nelson, and Smithfield, Madison County, New York





PHOTOSIMULATION



*Note: Printed at actual size, the resulting simulation image is 15 inches wide by 10 inches high. At this size and focal length, the simulation should be viewed from a distance 21 inches from the eye of the viewer.*



VIEWPOINT 45  
Nichols Pond Road

**Hoffman Falls Wind Project**  
Towns of Eaton, Fenner, Nelson, and Smithfield, Madison County, New York

