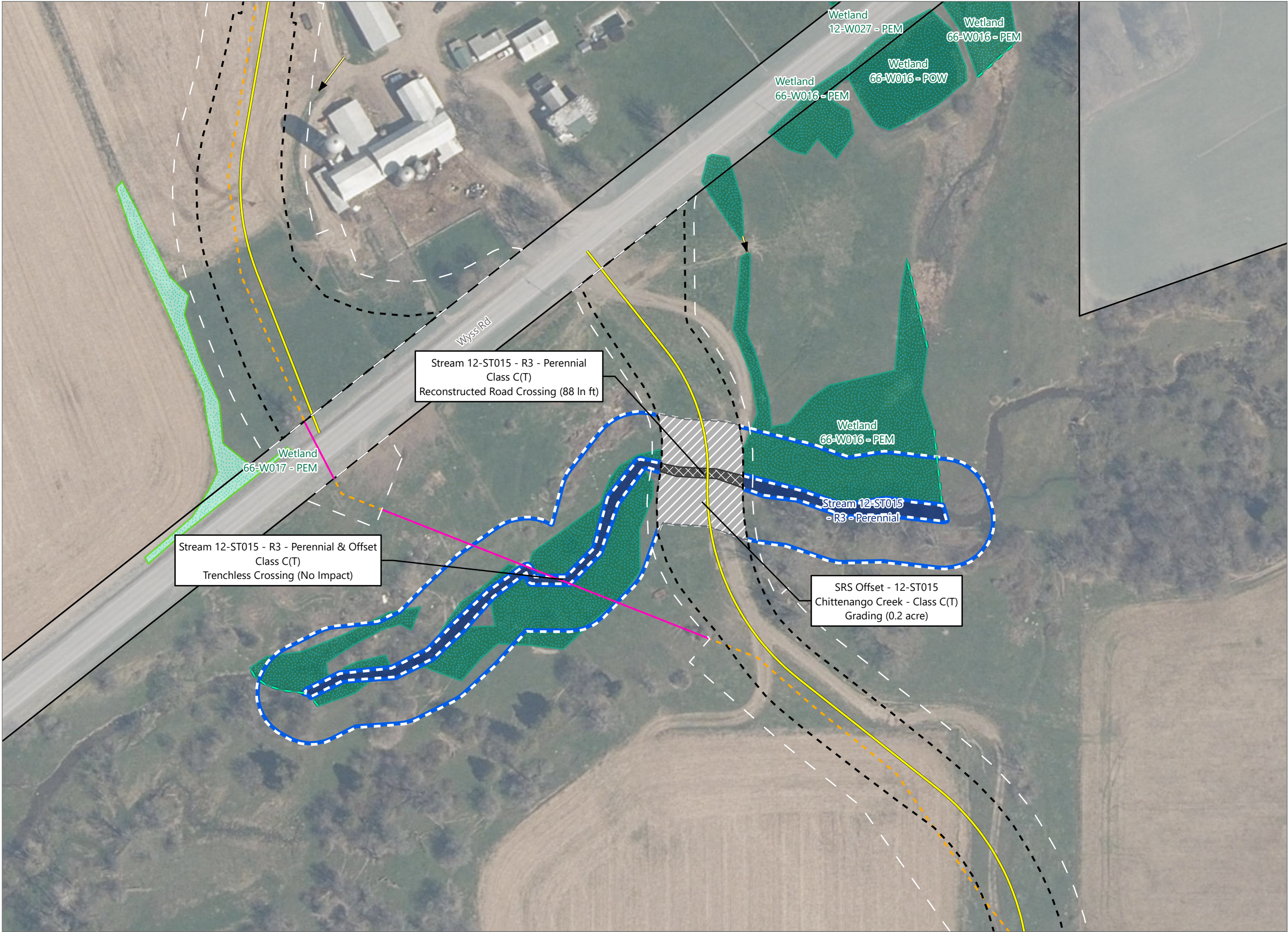


Figure 13-3. Impacts to State-Regulated Streams

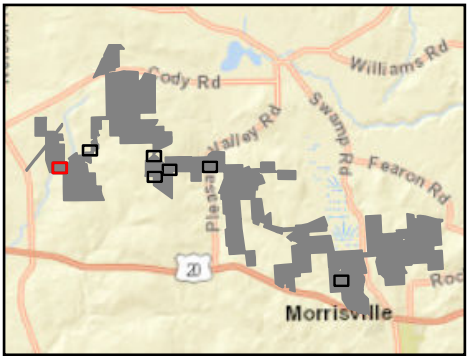


Hoffman Falls Wind

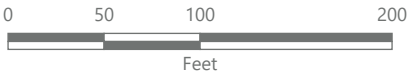
Towns of Eaton, Fenner, Nelson and
Smithfield, Madison County,
New York

**94-c Permit Application
Matter No. 23-00038**

- Wetlands and Streams
- Culvert
 - Wetland Continues
 - Delineated Stream w/
State & Federal Jurisdiction
 - State-Regulated Stream (SRS) 50-foot Offset
 - Delineated Wetland Non-jurisdictional
 - Delineated Wetland w/
State & Federal Jurisdiction
- State-Regulated Stream Impact
- State-Regulated Stream Impact
 - State-Regulated Stream 50-foot Offset Area Impact
- Grading
- Grading
- Facility Components
- Access Road
 - Collection Line
 - Collection Line Bore
 - Limit of Grading
 - Limit of Disturbance
 - Facility Site

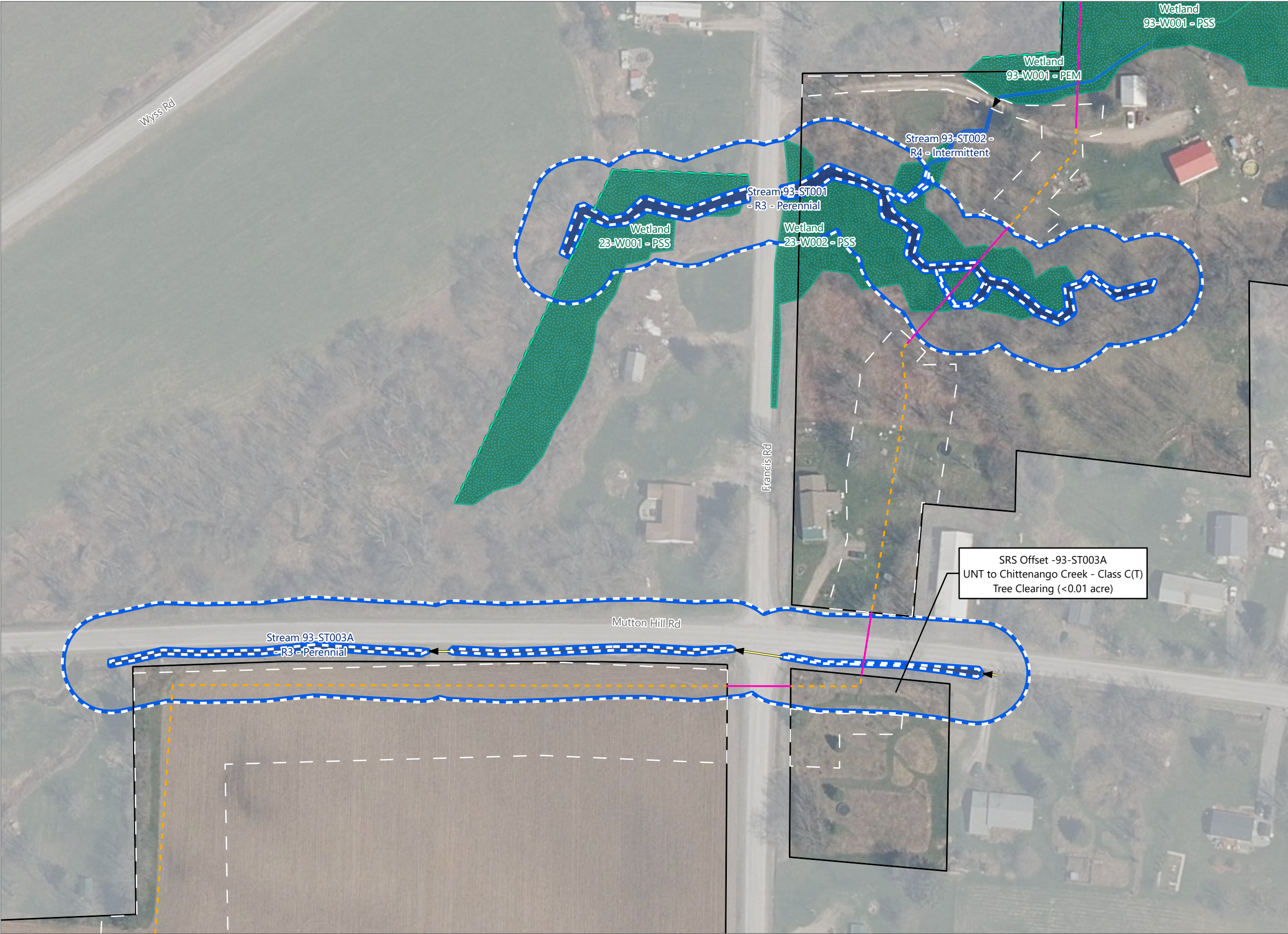


Sheet 1 of 7



Prepared February 12, 2024
Basemap: USDA NAIP "2022 New York 60cm" orthoimagery map
service

Figure 13-3. Impacts to State-Regulated Streams

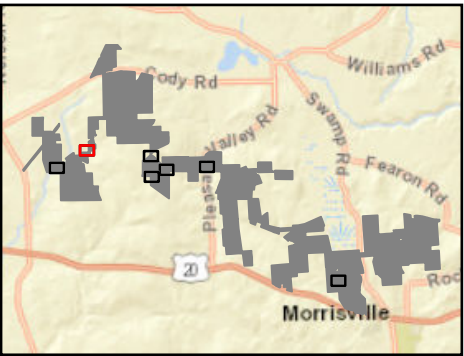


Hoffman Falls Wind

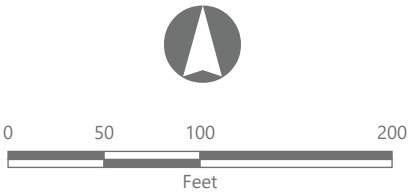
Towns of Eaton, Fenner, Nelson and
Smithfield, Madison County,
New York

94-c Permit Application
Matter No. 23-00038

- Wetlands and Streams
- Culvert
 - Wetland Continues
 - Delineated Stream w/ Federal Jurisdiction
 - Delineated Stream w/ State & Federal Jurisdiction
 - State-Regulated Stream (SRS) 50-foot Offset
 - Delineated Wetland w/ State & Federal Jurisdiction
- State-Regulated Stream 50-foot Offset Area Impact
- Tree Clearing
- Facility Components
- Collection Line
 - Collection Line Bore
 - Limit of Disturbance
 - Facility Site

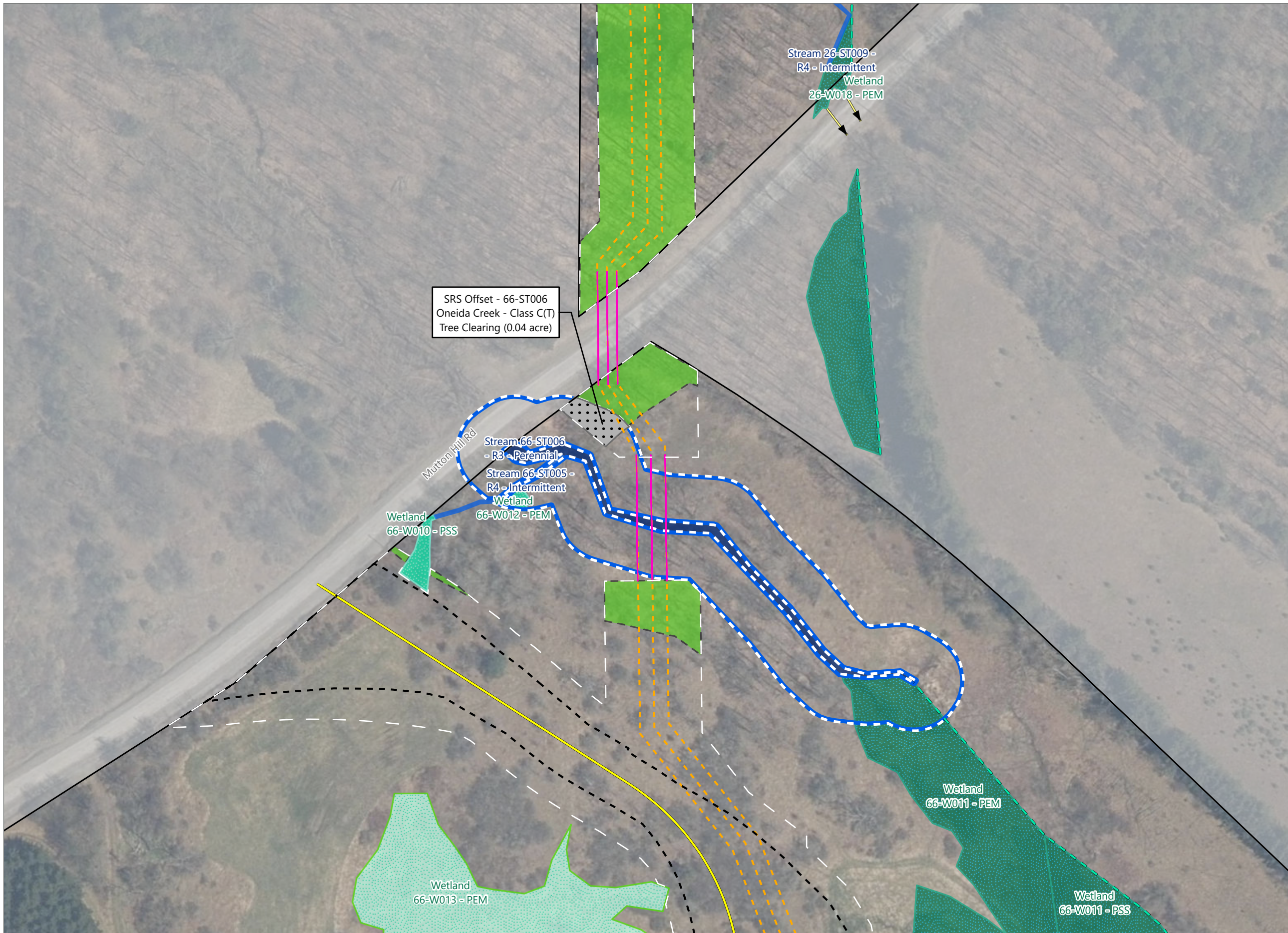


Sheet 2 of 7



Prepared February 12, 2024
Basemap: USDA NAIP "2022 New York 60cm" orthoimagery map service

Figure 13-3. Impacts to State-Regulated Streams

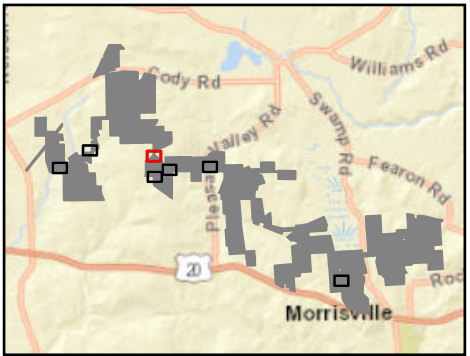


Hoffman Falls Wind

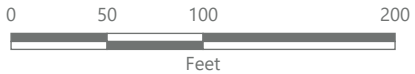
Towns of Eaton, Fenner, Nelson and
Smithfield, Madison County,
New York

**94-c Permit Application
Matter No. 23-00038**

- Wetlands and Streams
- Culvert
 - Wetland Continues
 - Delineated Stream w/ Federal Jurisdiction
 - Delineated Stream w/ State & Federal Jurisdiction
 - State-Regulated Stream (SRS) 50-foot Offset
 - Delineated Wetland Non-jurisdictional
 - Delineated Wetland w/ Federal Jurisdiction
 - Delineated Wetland w/ State & Federal Jurisdiction
- State-Regulated Stream 50-foot Offset Area Impact
- Tree Clearing
- Facility Components
- Access Road
 - Collection Line
 - Collection Line Bore
- Wetlands and Streams
- Limit of Clearing
- Facility Components
- Limit of Grading
 - Limit of Disturbance
 - Facility Site



Sheet 3 of 7



Prepared February 12, 2024
Basemap: USDA NAIP "2022 New York 60cm" orthoimagery map service

Figure 13-3. Impacts to State-Regulated Streams

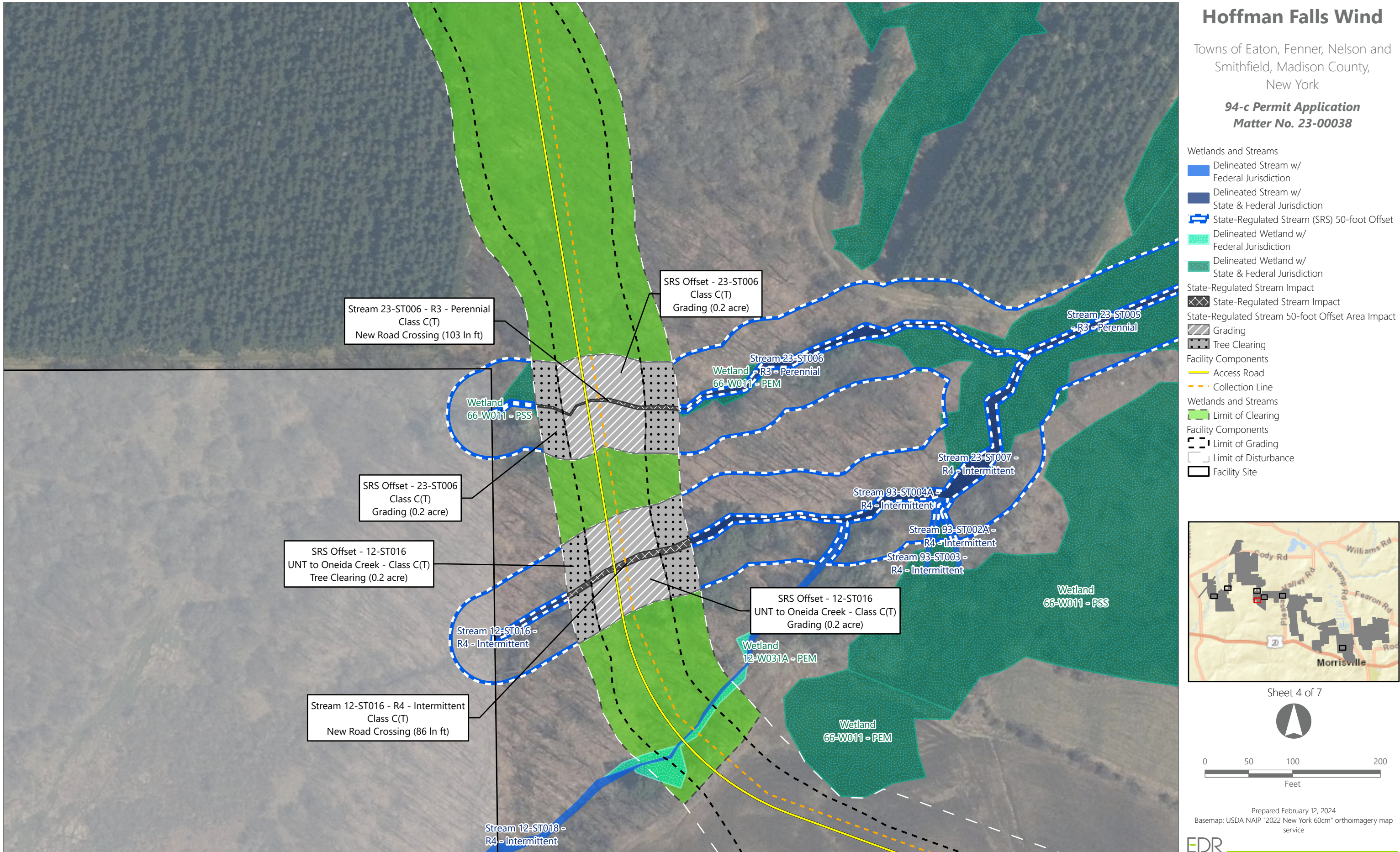


Figure 13-3. Impacts to State-Regulated Streams

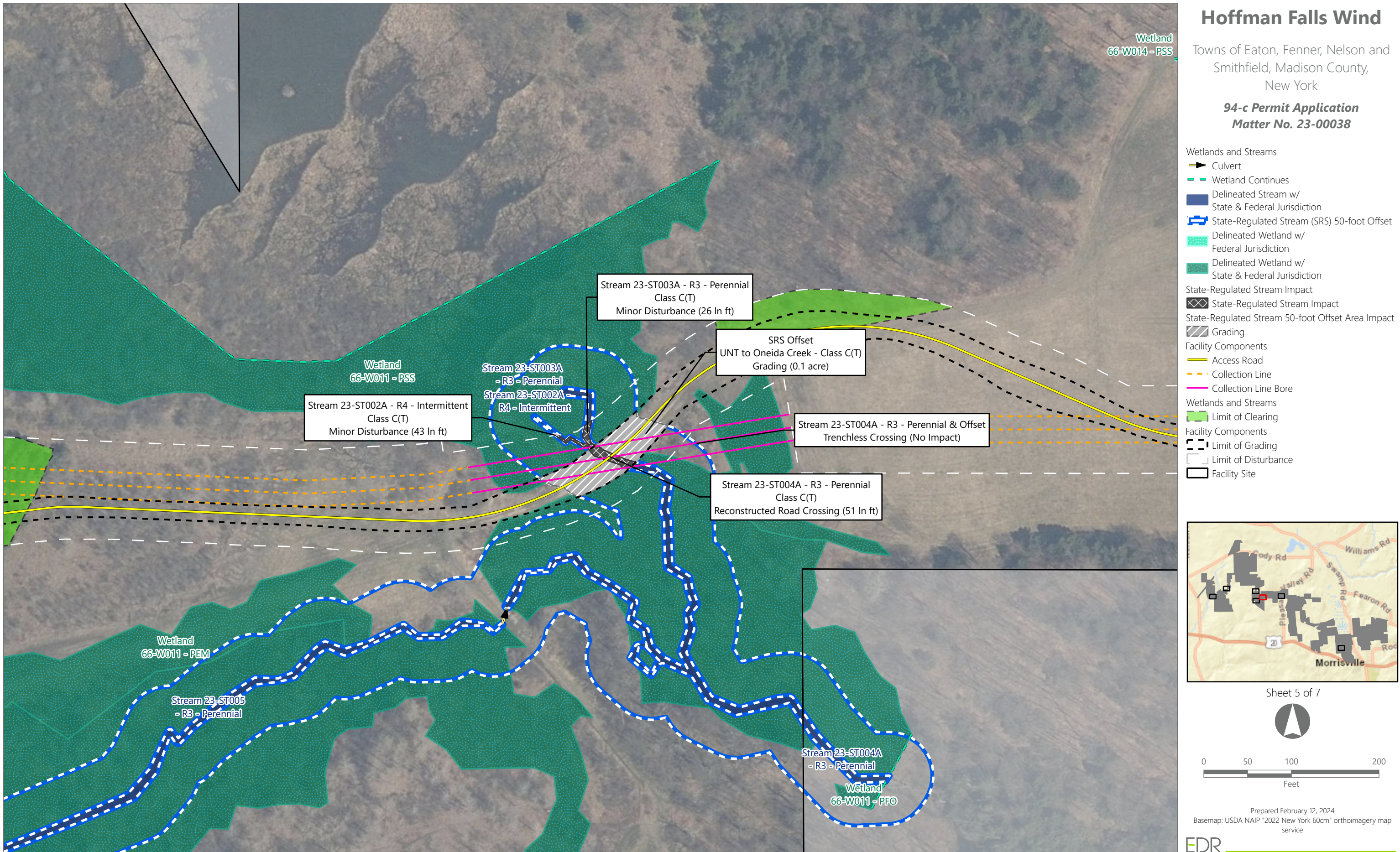
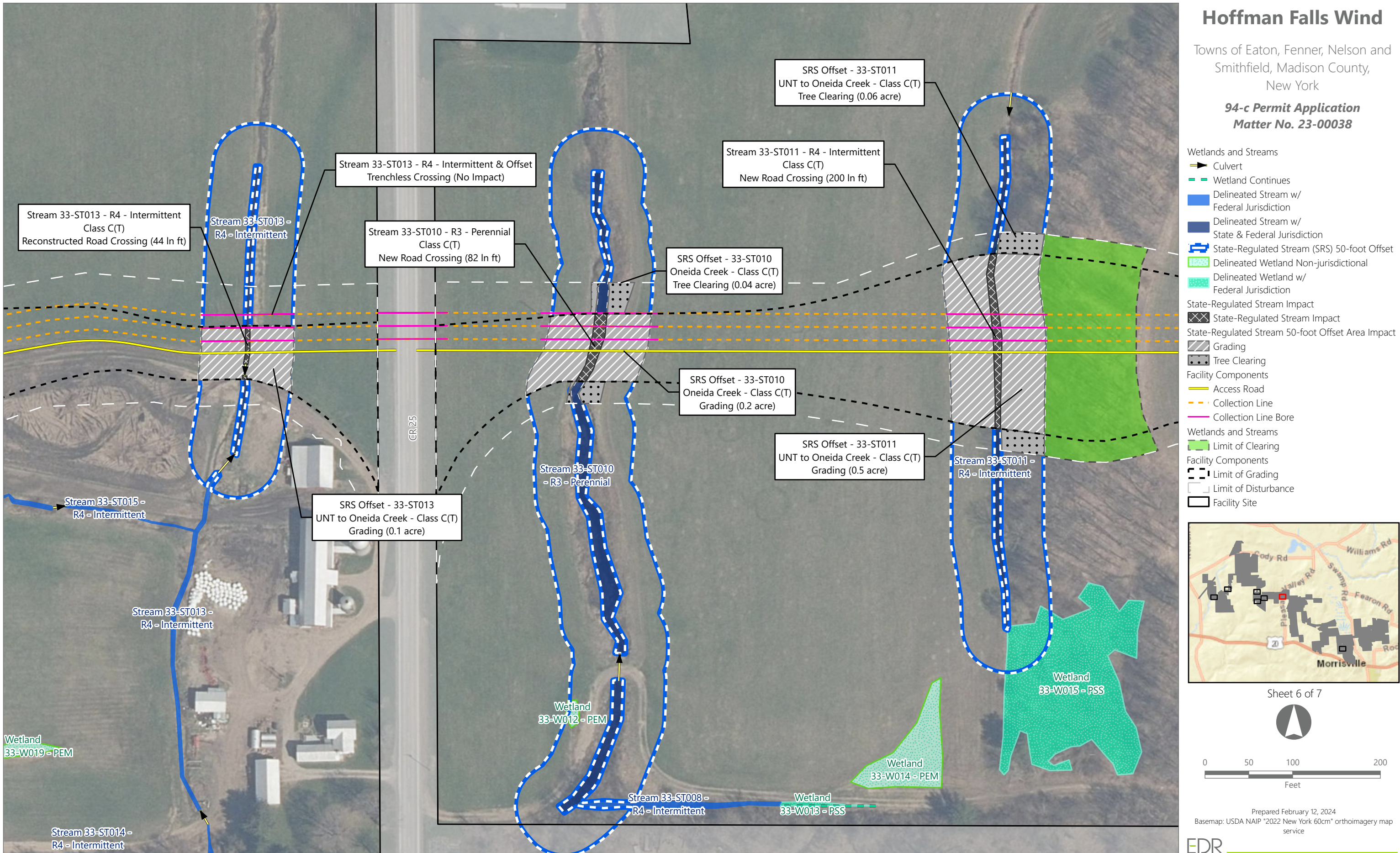


Figure 13-3. Impacts to State-Regulated Streams

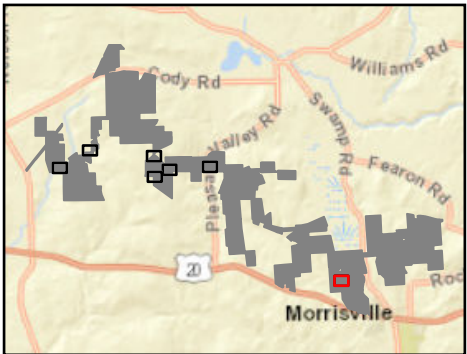


Hoffman Falls Wind

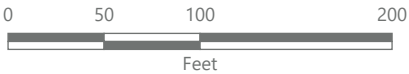
Towns of Eaton, Fenner, Nelson and
Smithfield, Madison County,
New York

94-c Permit Application
Matter No. 23-00038

- Wetlands and Streams
- Wetland Continues
 - Delineated Stream w/ State & Federal Jurisdiction
 - State-Regulated Stream (SRS) 50-foot Offset
 - Delineated Wetland w/ State & Federal Jurisdiction
- State-Regulated Stream Impact
- State-Regulated Stream Impact
 - State-Regulated Stream 50-foot Offset Area Impact
- Grading
- Facility Components
- Access Road
- Wetlands and Streams
- Limit of Clearing
- Facility Components
- Limit of Grading
 - Limit of Disturbance
 - Facility Site



Sheet 7 of 7



Prepared February 12, 2024
Basemap: USDA NAIP "2022 New York 60cm" orthoimagery map service

EDR

