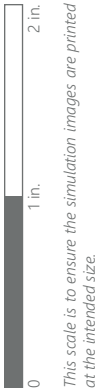


EXISTING VIEW (1 OF 3)

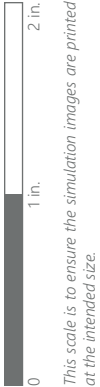


VIEWPOINT 14A
Burns Road

Note: Printed at actual size, the existing view image is 15 inches wide by 10 inches high. At this size and focal length, the existing view image should be viewed from a distance 21 inches from the eye of the viewer.



Note: Printed at actual size, the resulting simulation image is 15 inches wide by 10 inches high. At this size and focal length, the simulation should be viewed from a distance 21 inches from the eye of the viewer.



VIEWPOINT 14A
Burns Road



Note: Printed at actual size, the existing view image is 15 inches wide by 10 inches high. At this size and focal length, the existing view image should be viewed from a distance 21 inches from the eye of the viewer.



VIEWPOINT 14A
Burns Road



Note: Printed at actual size, the resulting simulation image is 15 inches wide by 10 inches high. At this size and focal length, the simulation should be viewed from a distance 21 inches from the eye of the viewer.

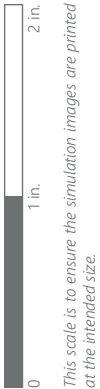
0 1 in. 2 in.
This scale is to ensure the simulation images are printed at the intended size.

VIEWPOINT 14A
Burns Road

EXISTING VIEW (3 OF 3)



Note: Printed at actual size, the existing view image is 15 inches wide by 10 inches high. At this size and focal length, the existing view image should be viewed from a distance 21 inches from the eye of the viewer.



VIEWPOINT 14A
Burns Road



Note: Printed at actual size, the resulting simulation image is 15 inches wide by 10 inches high. At this size and focal length, the simulation should be viewed from a distance 21 inches from the eye of the viewer.

A wide-angle photograph of a flat, open landscape under a clear blue sky. The foreground is a dry, brown field with visible furrows. A dark asphalt road curves along the bottom left corner. In the distance, a line of bare trees marks the horizon. A tall, thin tower or antenna structure is visible on the horizon line, slightly to the right of center.

EDR

Burns Road





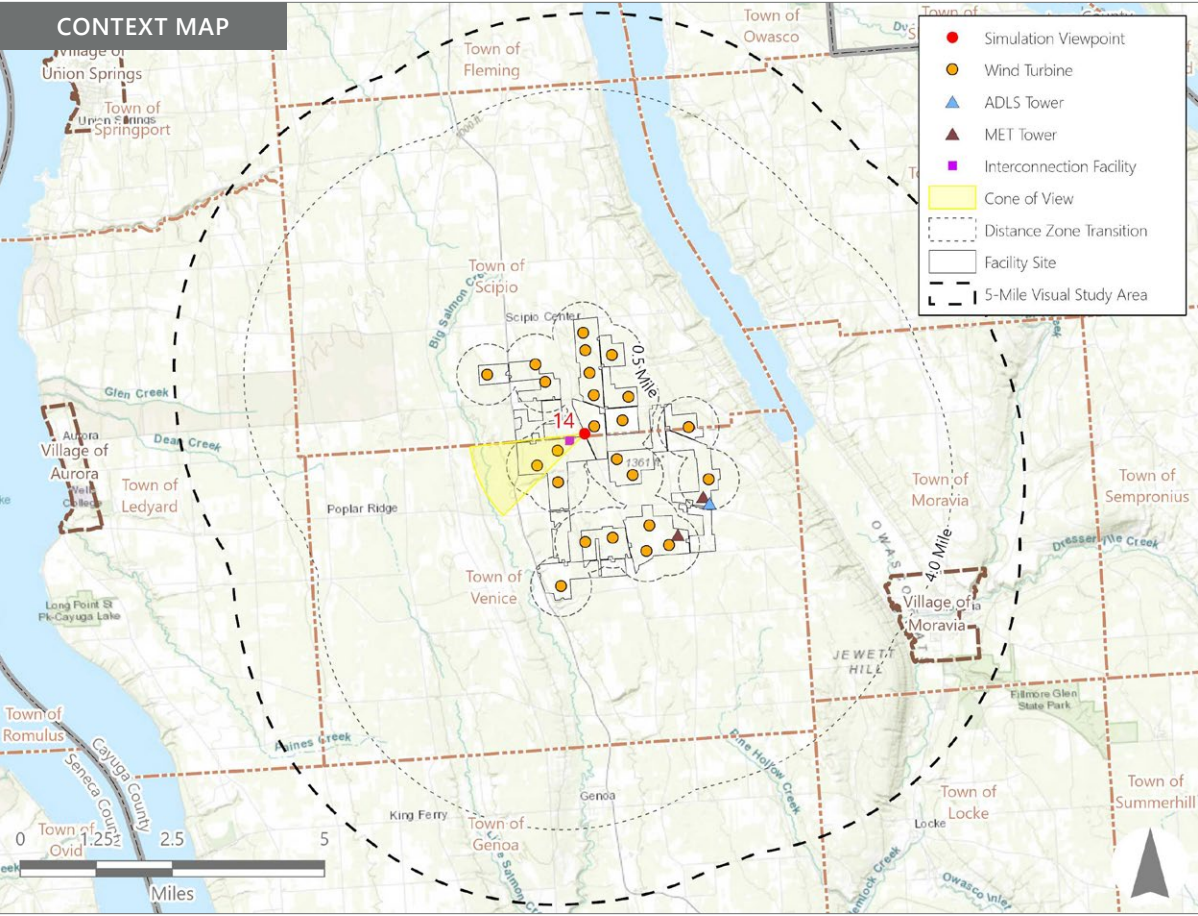
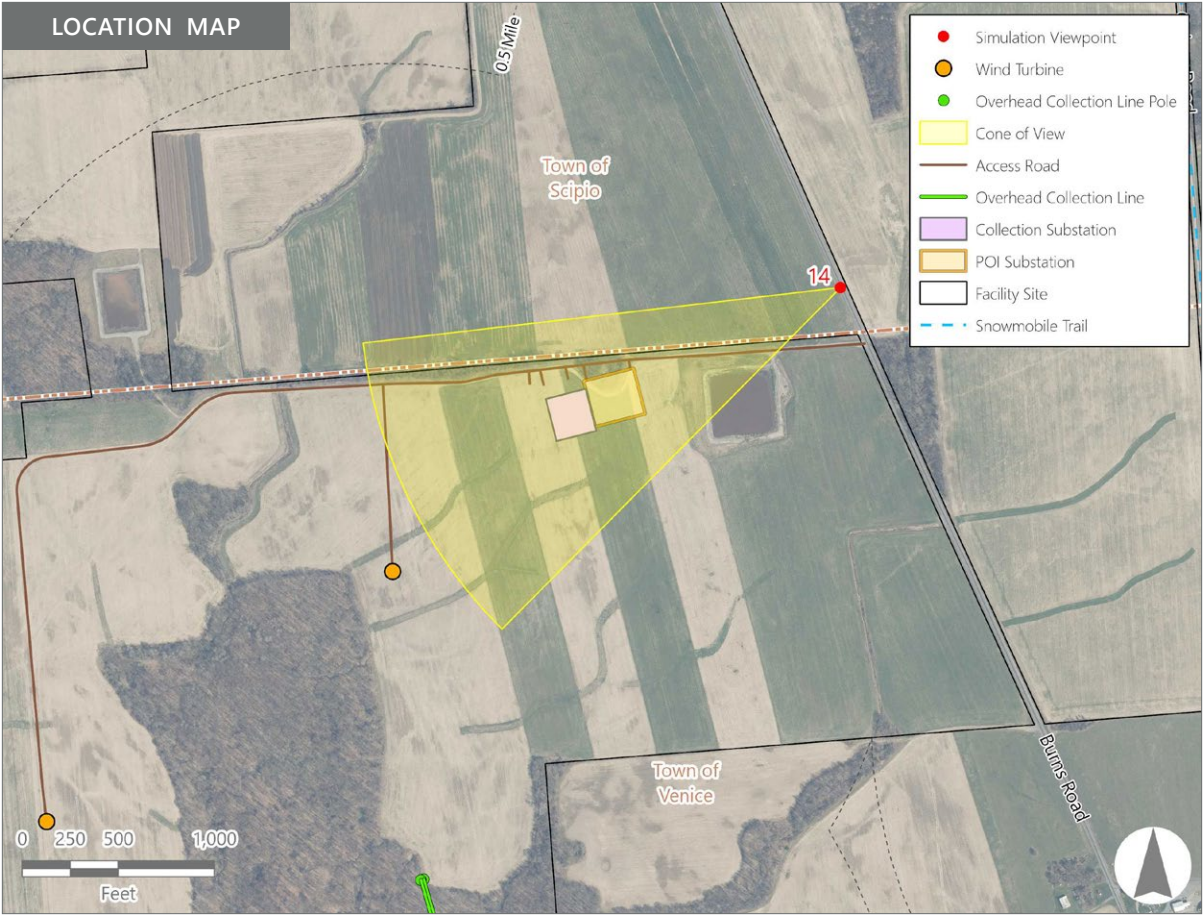


Note: The image above is a panorama composition panning clockwise from southeast (left) to northwest (right).

VIEWPOINT 14B
Burns Road

LOCATION INFORMATION

Municipality:	Town of Scipio
County:	Cayuga
Latitude:	42.75683° N
Longitude:	76.53422° W
Wind Turbine Distance*:	0.5 miles
Distance Zone Represented:	Foreground
Landscape Similarity Zone:	Agricultural/Rural Residential
Viewer/User Group(s):	Local Residents
Visually Sensitive Resource(s):	None Identified



PHOTOGRAPH INFORMATION

Date:	March 12, 2024
Time:	10:36 AM
Camera:	Canon EOS 5D Mark IV
Camera Resolution:	30.4 Megapixels
Lens Focal Length (35 mm sensor equivalent):	50 mm
Camera Elevation:	1,301 feet
Field of View:	39 degrees
Direction of View:	Southwest
Printed Size:	10 inches x 15 inches
Viewing Distance**:	21 inches

NOTES

*Distance as measured from the viewpoint to the closest wind turbine within the simulated photograph's field of view.

**The simulation is at the correct perspective when printed on an 11 inch by 17 inch sheet at full scale, and viewed approximately 21 inches from the eye of the viewer.

VIEWPOINT 14B

Burns Road

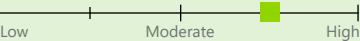


Existing View

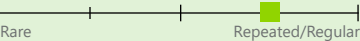
Viewpoint 14B is located on Burns Road in the town of Scipio, at roughly the same location as Viewpoint 14A. It is approximately 0.5 miles from the nearest proposed wind turbine that would be visible to the southwest in the selected photograph's field of view. Occurring in the Agricultural/Rural Residential LSZ, typical viewers at this location are local residents. Views to the south and west in this area are elevated and expansive, featuring large open agricultural fields and long-distance background views. In the selected photo, the existing view to the southwest includes a harvested cornfield in the foreground backed by a man-made pond, overhead utility line, and hedgerow in the middle ground. Beyond these middle ground features, the land drops into a valley and out of sight. On the opposite side of the valley, fields, farms, and woodlots can be seen on a slope that rises to a distant horizon. The horizon line is characterized by a horizontal band of forest vegetation, with a hazy low ridgeline visible at greater distance on the far-left side of the view. The view has an open, working agricultural character. The moderate scenic quality is enhanced by the availability of long-distance views but limited by the lack of topographic and vegetative variability and interesting focal points.

Viewpoint Sensitivity¹:

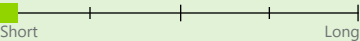
Scenic Quality:



View Frequency:



View Duration:



¹Viewpoint Sensitivity information is gathered from rating panel results. Scenic Quality and Viewer Exposure indicated in this table reflects all ratings by the rating panel.



Proposed View

With the proposed Facility in place, two wind turbines and the proposed substation appear in the middle ground behind the harvested cornfield. These proposed Facility components serve as focal points that draw the viewer's attention away from the long-distance background view. Agriculture remains the dominant use, but the turbines and substation add a significant utility component to the view. The substation is set back far enough from the viewer that its structures remain below the background ridgeline and do not extend into the sky. This minimizes their prominence and reduces visual clutter presented by the complex substation and interconnection structures. However, vegetation removal makes the existing transmission line more visible, and the large-scale utility infrastructure is a discordant element in the agricultural landscape. The wind turbines themselves project well into the sky and are close enough to allow details of their construction to be seen. Their vertical line and novel form contrasts with the horizontal lines in the existing landscape, and the turbines become the major character-defining focal points of the view. However, the limited number of visible turbines and their occurrence down slope of the viewer reduces their visual dominance. Their white color is also compatible with the remnant patches of snow cover and slightly overcast sky. However, the overall effect of the Facility is a shift in landscape character to utility land use and a reduction in scenic quality.

Visual Contrast Rating Results Summary

Landscape Component	Score	Rating
Landform	2.3	Moderate/Appreciable
Vegetation	2.3	Moderate/Appreciable
Land Use	3.3	Appreciable/Strong
Water	1.0	Minimal
Sky	2.3	Moderate/Appreciable
Viewer Activity	3.2	Appreciable
Overall Average	2.4	Moderate/Appreciable

Agricola Wind Project

Towns of Venice and Scipio, Cayuga County, New York

Visual Impact Assessment
Appendix 8-A

EXISTING VIEW



Note: Printed at actual size, the existing view image is 15 inches wide by 10 inches high. At this size and focal length, the existing view image should be viewed from a distance 21 inches from the eye of the viewer.



VIEWPOINT 14B
Burns Road

PHOTOSIMULATION



Note: Printed at actual size, the resulting simulation image is 15 inches wide by 10 inches high. At this size and focal length, the simulation should be viewed from a distance 21 inches from the eye of the viewer.

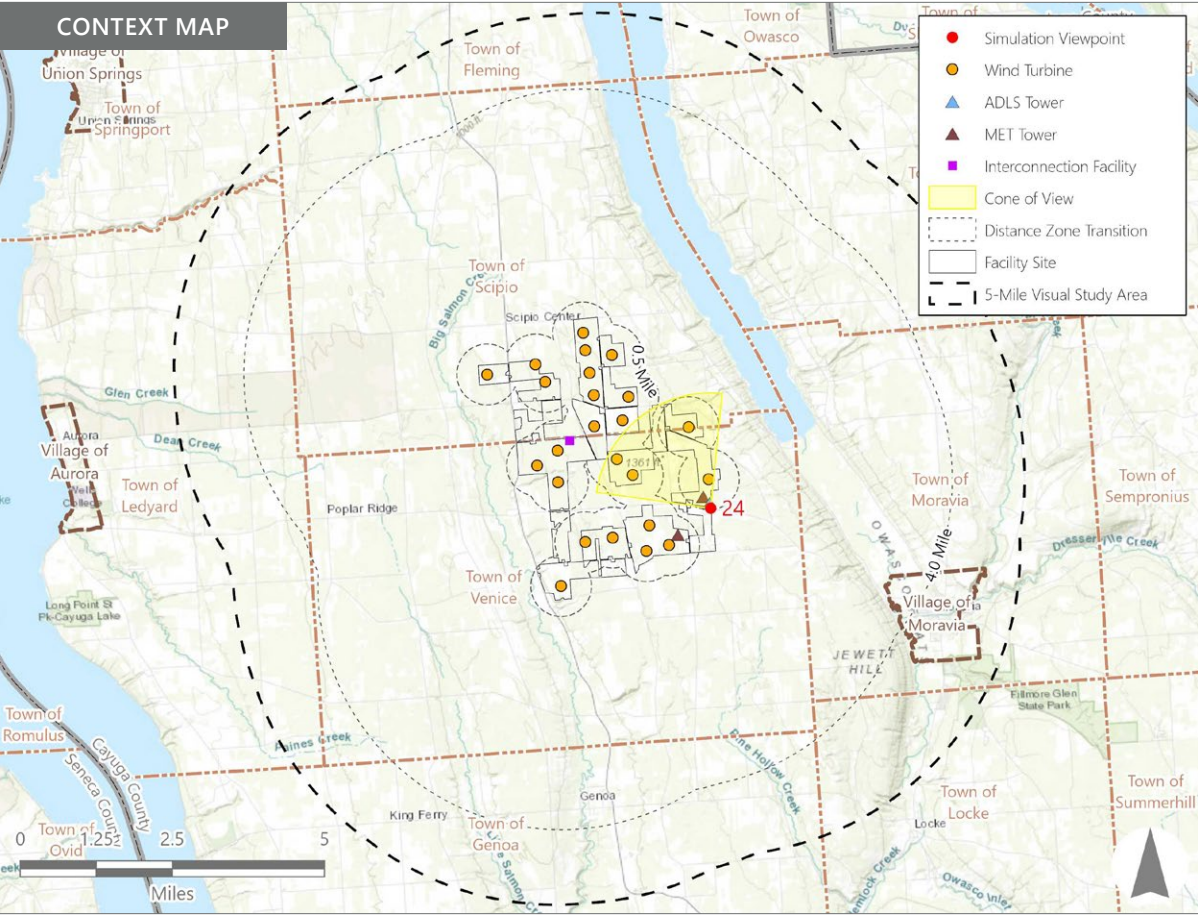
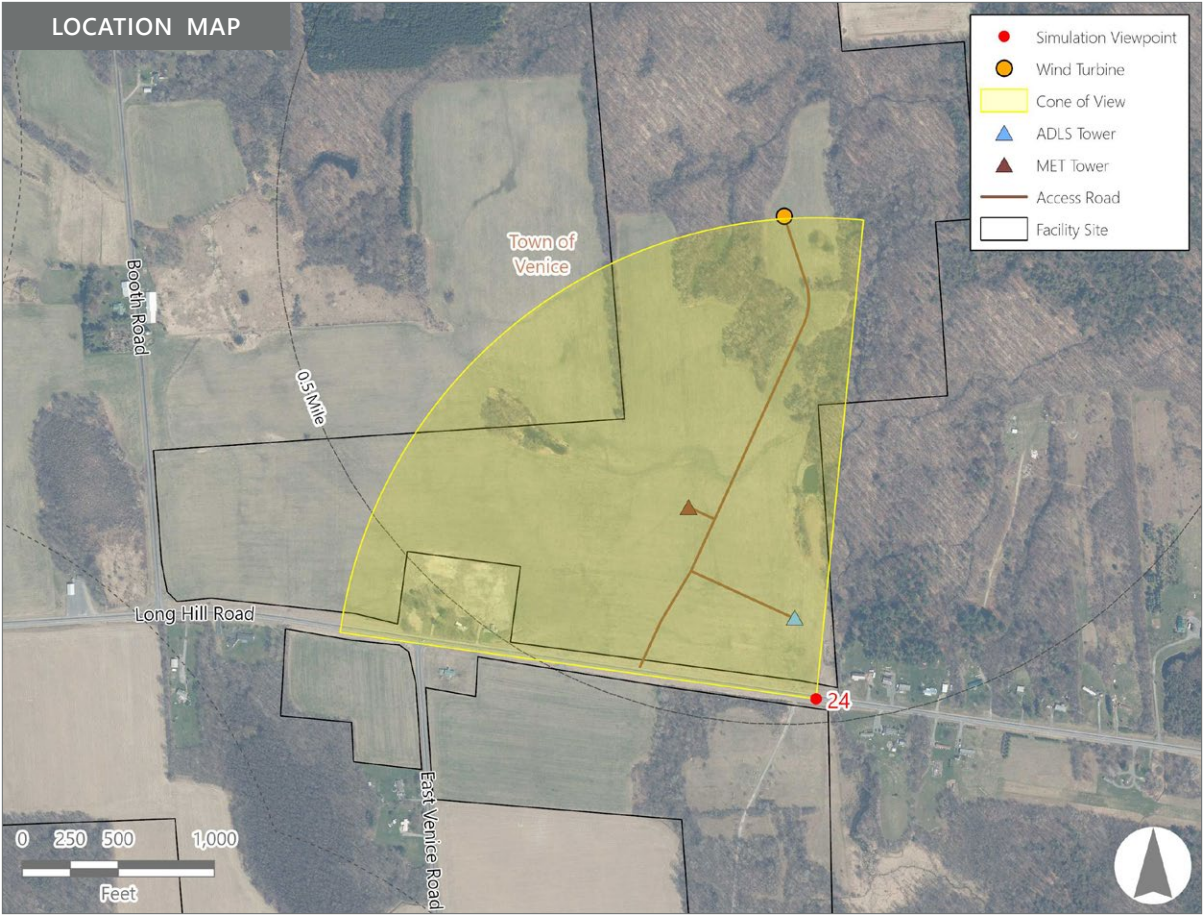


Note: The image above is a panorama composition panning clockwise from southwest (left) to north (right).

VIEWPOINT 24
Long Hill Road

LOCATION INFORMATION

Municipality:	Town of Venice
County:	Cayuga
Latitude:	42.73839° N
Longitude:	76.49407° W
Wind Turbine Distance*:	0.5 miles
Distance Zone Represented:	Foreground
Landscape Similarity Zone:	Agricultural/Rural Residential
Viewer/User Group(s):	Local Residents
Visually Sensitive Resource(s):	None identified



PHOTOGRAPH INFORMATION

Date:	March 12, 2024
Time:	11:05 AM
Camera:	Canon EOS 5D Mark IV
Camera Resolution:	30.4 Megapixels
Lens Focal Length (35 mm sensor equivalent):	50 mm
Camera Elevation:	1,369 feet
Field of View:**	88 degrees
Direction of View:	West to north
Printed Size:	10 inches x 15 inches
Viewing Distance***:	21 inches

NOTES

*Distance as measured from the viewpoint to the closest wind turbine within the simulated photograph's field of view.

**The simulated field of view is comprised of multiple single frame simulations, each with a field of view of 39 degrees.

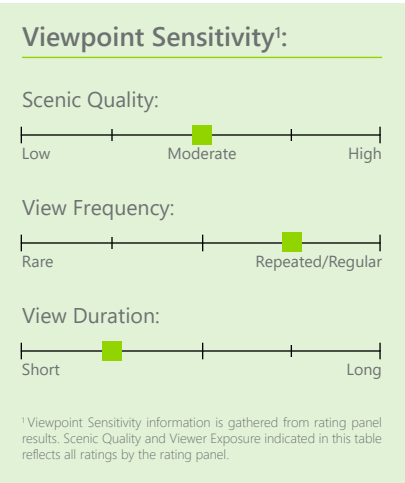
***The single-frame photograph simulations are at the correct perspective when printed on an 11 inch by 17 inch sheet at full scale, and viewed approximately 21 inches from the eye of the viewer.

VIEWPOINT 24

Hill Road



Viewpoint 24 is located on Hill Road in the Town of Venice, approximately 0.5 miles from the nearest proposed wind turbine that would be visible in the selected photograph’s field of view. This viewpoint is in the Agricultural/Rural Residential LSZ, and typical viewers are local residents and recreational users of the Finger Lakes Trailblazers snowmobile trail in the winter. Views in this general area include large, relatively level agricultural fields interspersed with deciduous woodlots and widely scattered rural homes and farms. In the selected panoramic photo, the existing view from the west to the north includes the surface of Hill Road angling across the view and an open agricultural field on the opposite side of the road, both of which rise gently as they extend from the foreground to the background. The field is crossed by a two-track access road and backed by a residential yard on the far-left (adjacent to Hill Road) and woodlot vegetation in the center and on the right. A more distant tree line that defines the visible horizon can be seen to the right of the residential yard that fronts on Hill Road. A roadside mailbox and buried utility marker in the foreground draw the viewer’s eye, as do the white house and a silo along the background tree line which serve as more distant focal points. The view has an open, expansive feel and strong rural character. However, lack of vegetative and topographic variability or interesting foreground and middle ground features result in moderate scenic quality.



With the proposed Facility in place two lattice steel structures, that represent the lower portions of the ADL and MET towers, are now present in the open field in the foreground. The structures are close enough to the viewer that their upper portions extend outside the photograph’s vertical field of view. The towers are also close enough that details of their construction (including an access road across the field and chain link fencing at their base) are clearly visible. Their open lattice construction and the gray color of the steel members reduces their visual prominence and color contrast with the sky. However, their line, form, and especially their height, present strong contrast with the existing largely horizontal agricultural landscape. A relatively nearby turbine on the right side of the view is actually a more prominent focal point due to its large size, novel form, movement, and color contrast with the background forest vegetation and sky. The turbine’s occurrence behind the foreground field and middle ground woodlot reduces its impact on the agricultural character of the view. The remaining turbines are viewed at much greater distance, which significantly reduces their scale and land use contrast. Their white collar also blends well with the light blue sky at the horizon line, however, the abundance of visible turbines indicates a shift in land use. The ADLS and MET towers and numerous visible turbines add substantial utility character to the existing view. The landscape remains largely agricultural, but the turbines are now the dominant built features in the view and the foreground towers are discordant features that feel out of place. Although less prominent than the wind turbines, the towers add visual clutter and have an adverse impact on scenic quality.

Visual Contrast Rating Results Summary

Landscape Component	Score	Rating
Landform	1.3	Minimal/Moderate
Vegetation	2.2	Moderate
Land Use	2.7	Moderate/Appreciable
Water	N/A	N/A
Sky	2.3	Moderate/Appreciable
Viewer Activity	2.3	Moderate/Appreciable
Overall Average	2.2	Moderate

Agricola Wind Project

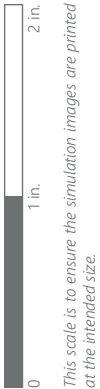
Towns of Venice and Scipio, Cayuga County, New York

Visual Impact Assessment
Appendix 8-A

EXISTING VIEW (1 OF 4)



Note: Printed at actual size, the existing view image is 15 inches wide by 10 inches high. At this size and focal length, the existing view image should be viewed from a distance 21 inches from the eye of the viewer.



VIEWPOINT 24
Hill Road

Agricola Wind Project
Visual Impact Assessment, Appendix 8-A, Attachment D





Note: Printed at actual size, the resulting simulation image is 15 inches wide by 10 inches high. At this size and focal length, the simulation should be viewed from a distance 21 inches from the eye of the viewer.



VIEWPOINT 24
Hill Road



Note: Printed at actual size, the existing view image is 15 inches wide by 10 inches high. At this size and focal length, the existing view image should be viewed from a distance 21 inches from the eye of the viewer.



VIEWPOINT 24
Hill Road

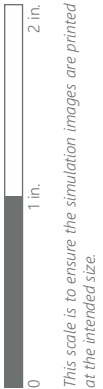


Note: Printed at actual size, the resulting simulation image is 15 inches wide by 10 inches high. At this size and focal length, the simulation should be viewed from a distance 21 inches from the eye of the viewer.



VIEWPOINT 24
Hill Road

EXISTING VIEW (3 OF 4)



VIEWPOINT 24
Hill Road

Note: Printed at actual size, the existing view image is 15 inches wide by 10 inches high. At this size and focal length, the existing view image should be viewed from a distance 21 inches from the eye of the viewer.



0 1 in. 2 in.
This scale is to ensure the simulation images are printed at the intended size.

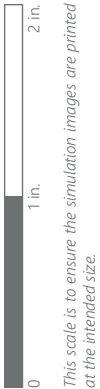
VIEWPOINT 24
Hill Road

Note: Printed at actual size, the resulting simulation image is 15 inches wide by 10 inches high. At this size and focal length, the simulation should be viewed from a distance 21 inches from the eye of the viewer.

EXISTING VIEW (4 OF 4)



Note: Printed at actual size, the existing view image is 15 inches wide by 10 inches high. At this size and focal length, the existing view image should be viewed from a distance 21 inches from the eye of the viewer.



VIEWPOINT 24
Hill Road

Agricola Wind Project
Visual Impact Assessment, Appendix 8-A, Attachment D





Note: Printed at actual size, the resulting simulation image is 15 inches wide by 10 inches high. At this size and focal length, the simulation should be viewed from a distance 21 inches from the eye of the viewer.

0

1 in.

2 in.

This scale is to ensure the simulation images are printed at the intended size.

VIEWPOINT 24
Hill Road

EXISTING VIEW - PANORAMA





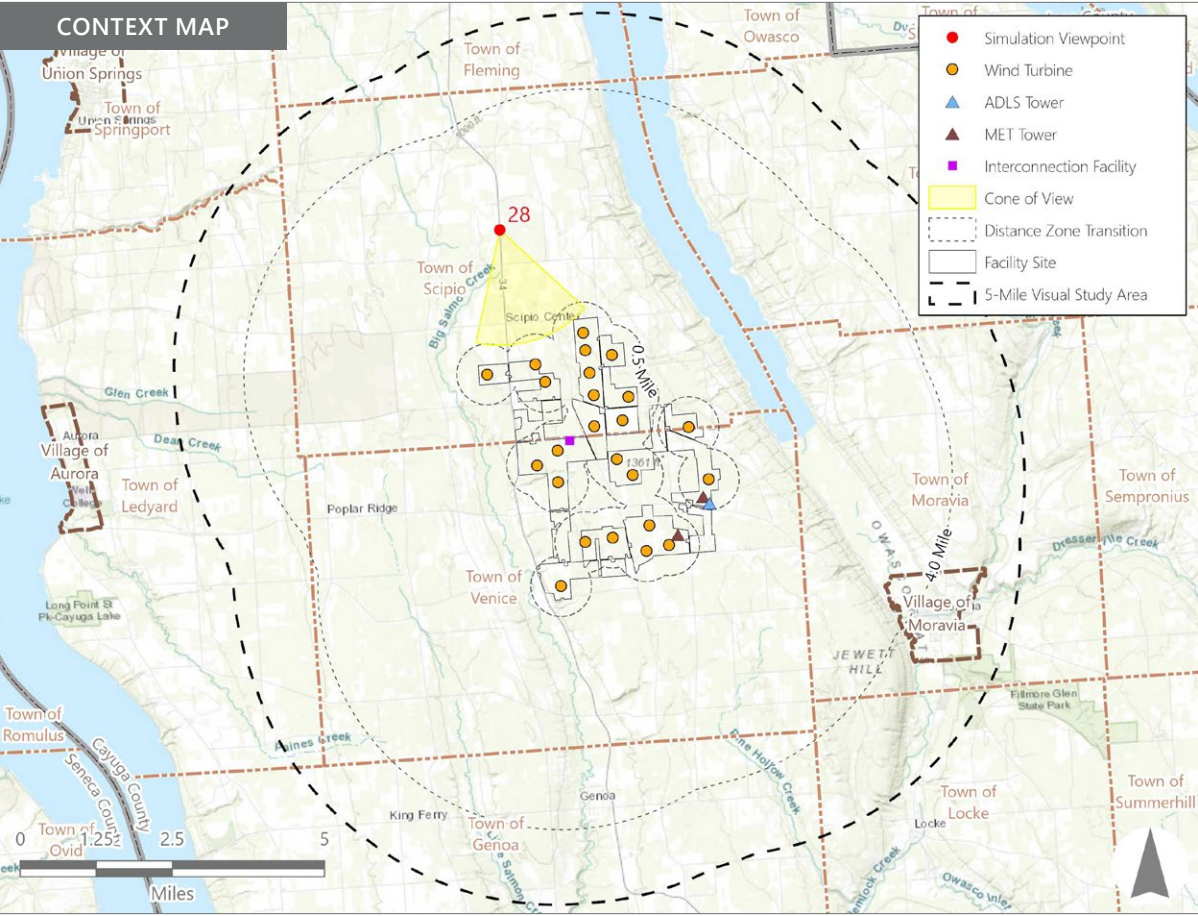
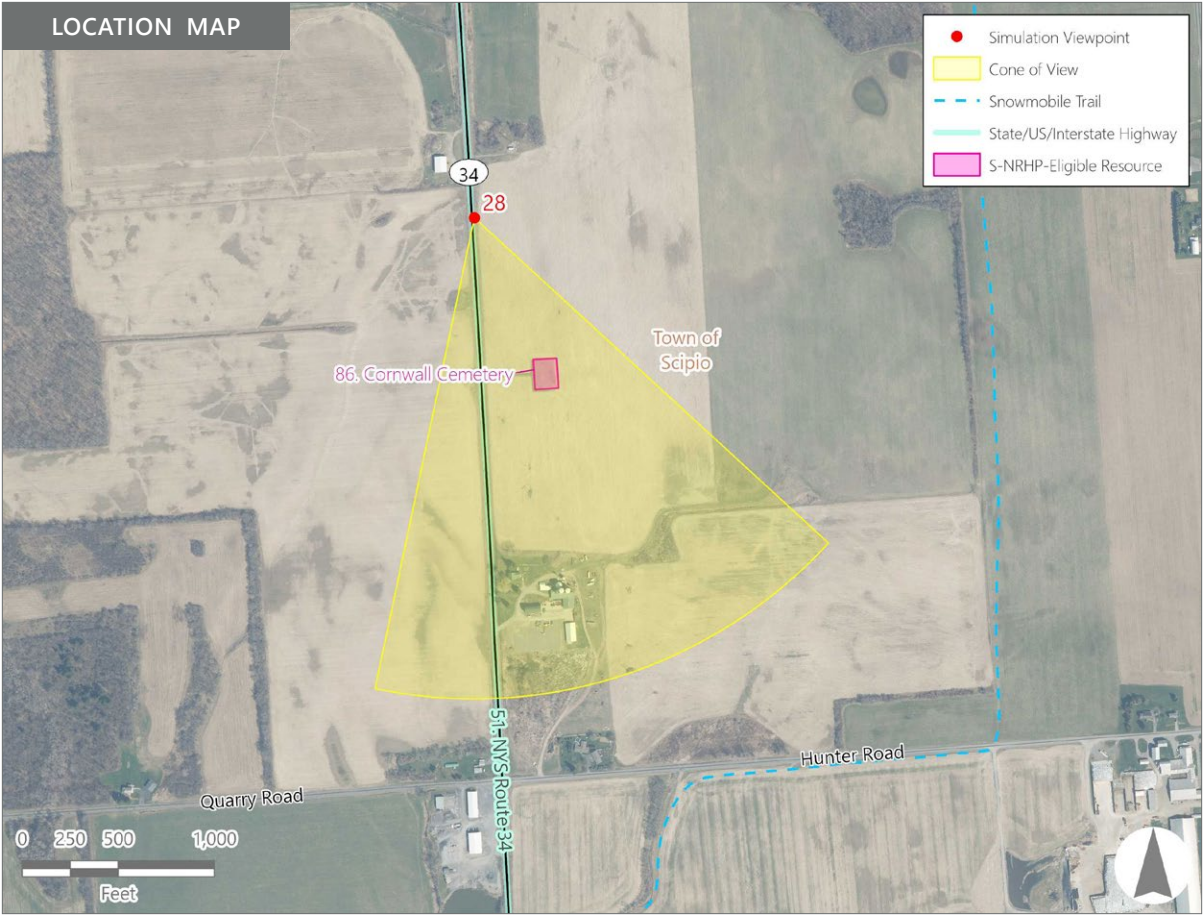


Note: The image above is a panorama composition panning clockwise from east (left) to south (right).

VIEWPOINT 28
State Route 34

LOCATION INFORMATION

Municipality:	Town of Scipio
County:	Cayuga
Latitude:	42.80578° N
Longitude:	76.56002° W
Wind Turbine Distance*:	2.2 miles
Distance Zone Represented:	Middle Ground
Landscape Similarity Zone:	Agricultural/Rural Residential
Viewer/User Group(s):	Local Residents, Through-Travelers, Tourists/Recreational Users
Visually Sensitive Resource(s):	
VSR ID # 51	NYS Route 34



PHOTOGRAPH INFORMATION

Date:	March 12, 2024
Time:	8:46 AM
Camera:	Canon EOS 5D Mark IV
Camera Resolution:	30.4 Megapixels
Lens Focal Length (35 mm sensor equivalent):	50 mm
Camera Elevation:	1,241 feet
Field of View**:	59 degrees
Direction of View:	Southeast to south-southwest
Printed Size:	10 inches x 15 inches
Viewing Distance***:	21 inches

NOTES

*Distance as measured from the viewpoint to the closest wind turbine within the simulated photograph's field of view.

**The simulated field of view is comprised of multiple single frame simulations, each with a field of view of 39 degrees.

***The single-frame photograph simulations are at the correct perspective when printed on an 11 inch by 17 inch sheet at full scale, and viewed approximately 21 inches from the eye of the viewer.

VIEWPOINT 28

State Route 34



Existing View

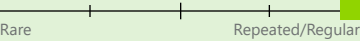
Viewpoint 28 is located on State Route 34 in the Town of Scipio, approximately 2.2 miles from the nearest proposed wind turbine that would be visible in the selected photograph’s field of view. This viewpoint is in the Agricultural/Rural Residential LSZ, and typical viewers are local residents, through travelers, and tourists/recreational users (sightseers) on the state highway. Views in this general area are characterized by broad expanses of higher elevation agricultural land, with relatively few trees or man-made structures. In the selected panoramic photo, the existing view from the southeast to the south-southwest includes Route 34, a snow-covered road shoulder, and an adjacent harvested cornfield to the left of the road that extend from the immediate foreground to the background. The gently rising topography obscures the majority of background features beyond the field, with the exception of a cluster of agricultural structures (silos, grain bins, and buildings) and associated yard trees to the left of the road, and some more distant structures and trees on the far-left side of the view. An existing distribution line parallels the road and an overhead transmission line angles across the view in the vicinity of the farm complex. The view has an open, high elevation feel and working agricultural character. Scenic quality is moderate due to the lack of foreground features, lack of topographic and vegetative variability, and the presence of the overhead utility lines.

Viewpoint Sensitivity¹:

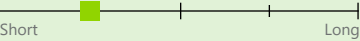
Scenic Quality:



View Frequency:



View Duration:



¹Viewpoint Sensitivity information is gathered from rating panel results. Scenic Quality and Viewer Exposure indicated in this table reflects all ratings by the rating panel.



Proposed View

With the proposed Facility in place, numerous wind turbines in the background span the full width of the panoramic photo. Due to their distance from the viewer, the turbines do not appear out of scale with other background features, including trees, silos, and overhead transmission and distribution poles. Their vertical line is also consistent with these background features. However, the turbines add a significant amount of visual clutter to the background sky. Although the agricultural character of the view is maintained, the abundance of turbines on the horizon reduces the scenic quality and open character of the view.

Visual Contrast Rating Results Summary

Landscape Component	Score	Rating
Landform	1.2	Minimal
Vegetation	1.3	Minimal/Moderate
Land Use	1.8	Moderate
Water	N/A	N/A
Sky	2.0	Moderate
Viewer Activity	1.7	Minimal/Moderate
Overall Average	1.6	Minimal/Moderate

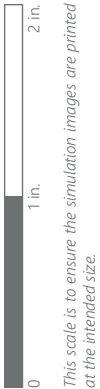
Agricola Wind Project

Towns of Venice and Scipio, Cayuga County, New York

Visual Impact Assessment
Appendix 8-A



Note: Printed at actual size, the existing view image is 15 inches wide by 10 inches high. At this size and focal length, the existing view image should be viewed from a distance 21 inches from the eye of the viewer.



VIEWPOINT 28
State Route 34



Note: Printed at actual size, the resulting simulation image is 15 inches wide by 10 inches high. At this size and focal length, the simulation should be viewed from a distance 21 inches from the eye of the viewer.

01 in.2 in.

This scale is to ensure the simulation images are printed at the intended size.

VIEWPOINT 28
State Route 34



Note: Printed at actual size, the existing view image is 15 inches wide by 10 inches high. At this size and focal length, the existing view image should be viewed from a distance 21 inches from the eye of the viewer.



VIEWPOINT 28
State Route 34



Note: Printed at actual size, the resulting simulation image is 15 inches wide by 10 inches high. At this size and focal length, the simulation should be viewed from a distance 21 inches from the eye of the viewer.



VIEWPOINT 28
State Route 34

EXISTING VIEW - PANORAMA



Note: Printed at actual size, the resulting simulation image is 15 inches wide by 10 inches high. At this size and focal length, the existing view image should be viewed from a distance 21 inches from the eye of the viewer.

0

1 in.

2 in.

This scale is to ensure the simulation images are printed at the intended size.

VIEWPOINT 28
State Route 34



Note: Printed at actual size, the resulting simulation image is 15 inches wide by 10 inches high. At this size and focal length, the existing view image should be viewed from a distance 21 inches from the eye of the viewer.



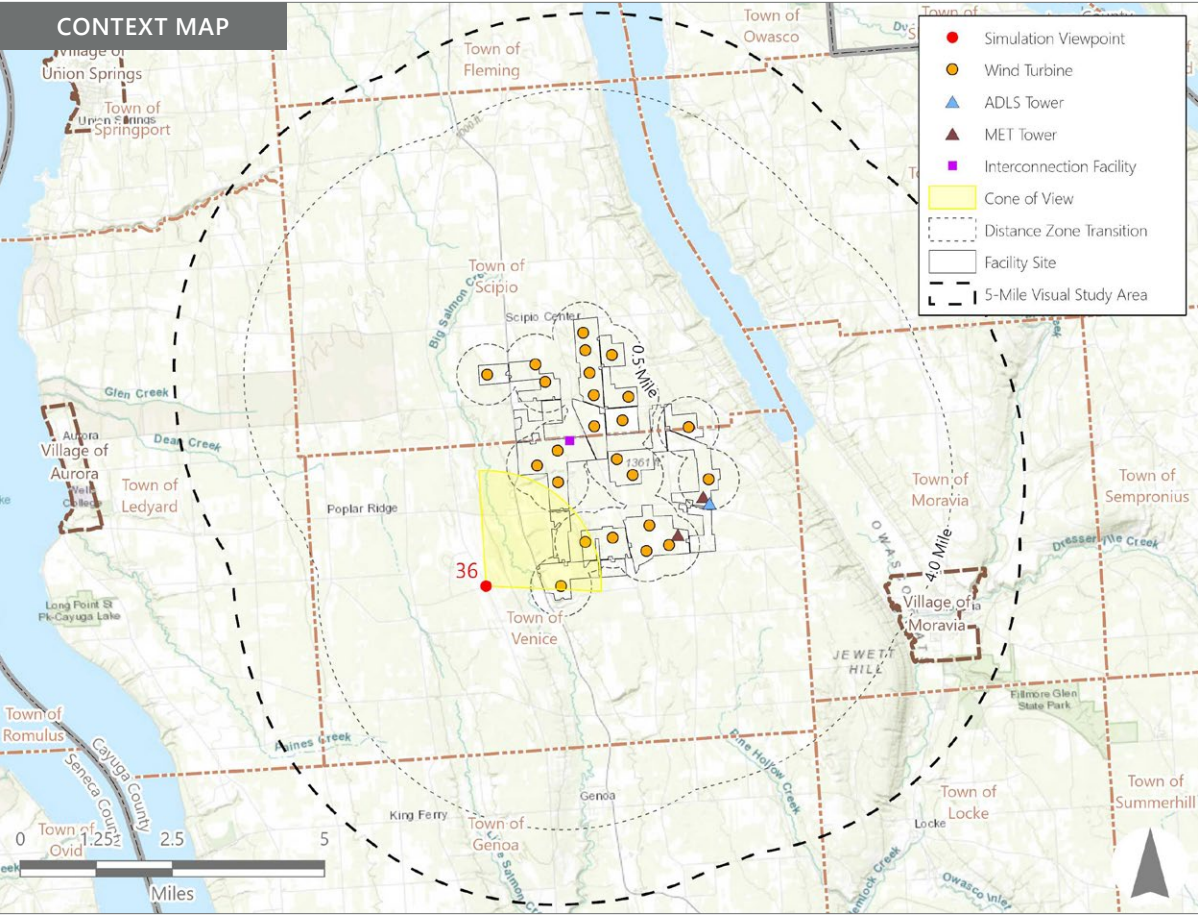
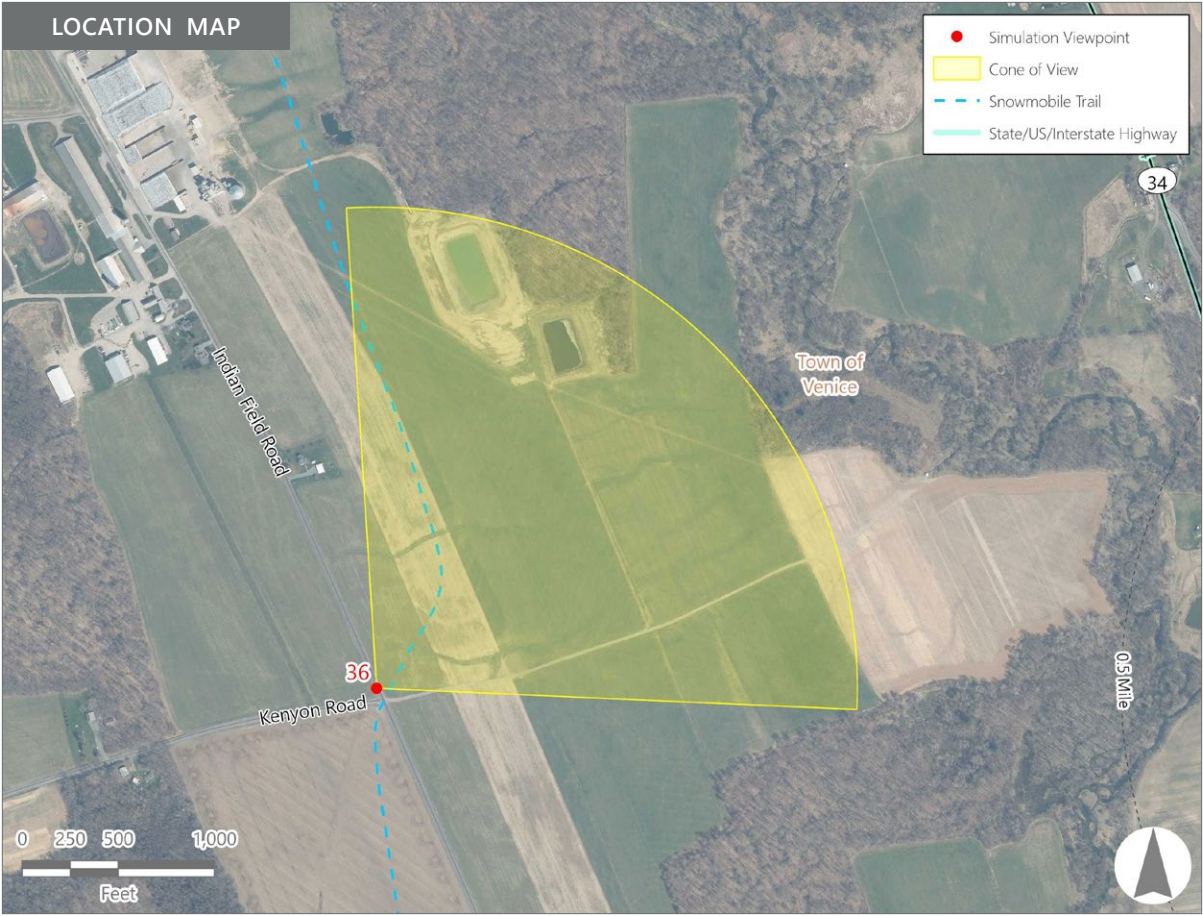
Note: The image above is a panorama composition panning clockwise from north (left) to southeast (right).

VIEWPOINT 36
Indian Field Road

LOCATION INFORMATION

Municipality:	Town of Venice
County:	Cayuga
Latitude:	42.72115° N
Longitude:	76.56718° W
Wind Turbine Distance*:	1.2 miles
Distance Zone Represented:	Middle Ground
Landscape Similarity Zone:	Agricultural/Rural Residential
Viewer/User Group(s):	Local Residents, Tourists/ Recreational Users

Visually Sensitive Resource(s):
VSR ID # 38 Fingerlakes Trailrunners Snowmobile Trail



PHOTOGRAPH INFORMATION

Date:	March 12, 2024
Time:	1:25 PM
Camera:	Canon EOS 5D Mark IV
Camera Resolution:	30.4 Megapixels
Lens Focal Length (35 mm sensor equivalent):	50 mm
Camera Elevation:	1,192 feet
Field of View**:	96 degrees
Direction of View:	North to east
Printed Size:	10 inches x 15 inches
Viewing Distance***:	21 inches

NOTES

*Distance as measured from the viewpoint to the closest wind turbine within the simulated photograph's field of view.

**The simulated field of view is comprised of multiple single frame simulations, each with a field of view of 39 degrees.

***The single-frame photograph simulations are at the correct perspective when printed on an 11 inch by 17 inch sheet at full scale, and viewed approximately 21 inches from the eye of the viewer.

VIEWPOINT 36

Indian Field Road

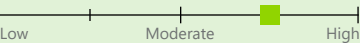


Existing View

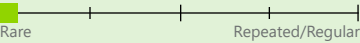
Viewpoint 36 is located on Indian Field Road in the Town of Venice, approximately 1.2 miles from the nearest proposed wind turbine that would be visible in the selected photograph’s field of view. This viewpoint occurs on a local road in the Agricultural/Rural Residential LSZ where typical viewers are local residents and tourist/recreational users (snowmobilers during the winter). Panoramic long-distance views are available in this general area. These views include open fields with undulating topography, interspersed with dense woodlots and sporadic residences. In the selected panoramic photo, the existing view from the north to the east features the edge of Indian Field Road as it angles northwest in the immediate foreground, backed by a gently rising open field. The field descends out of view into a shallow valley in the middle ground. The far side of the valley includes woodlots interspersed with clearings and lightly colored residences and farmsteads. These structures present contrast with the subdued earth tones of the surrounding landscape. The land continues to rise gently into the distant background which becomes progressively more wooded. The horizon is contoured by a thick contiguous stretch of forest, which abruptly transitions to the cool blue of the clear sky. The expansiveness of the view provides visual interest. However, the absence of foreground features and focal points, along with lack of interesting variation in topography and vegetation results in moderate scenic quality.

Viewpoint Sensitivity¹:

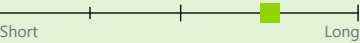
Scenic Quality:



View Frequency:



View Duration:



¹ Viewpoint Sensitivity information is gathered from rating panel results. Scenic Quality and Viewer Exposure indicated in this table reflects all ratings by the rating panel.



Proposed View

With the proposed Facility in place, turbines span the background across the panoramic photo’s full field of view. Although the turbines are numerous, and their scale contrast with adjacent woodlot vegetation and buildings is notable, their distance from the viewer and wide spacing minimizes their land use contrast and visual clutter. Their white color also blends well with the background sky and minimizes impact on the open, expansive character of the view. Although wind power generation is now a significant component of the landscape, it appears compatible with the existing agricultural land use and does not have a significant adverse impact on scenic quality.

Visual Contrast Rating Results Summary

Landscape Component	Score	Rating
Landform	1.5	Minimal/Moderate
Vegetation	1.5	Minimal/Moderate
Land Use	2.2	Moderate
Water	N/A	N/A
Sky	2.5	Moderate/Appreciable
Viewer Activity	2.2	Moderate
Overall Average	2.0	Moderate

Agricola Wind Project

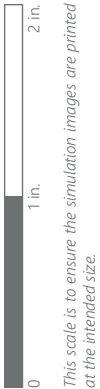
Towns of Venice and Scipio, Cayuga County, New York

Visual Impact Assessment
Appendix 8-A

EXISTING VIEW (1 OF 4)



Note: Printed at actual size, the existing view image is 15 inches wide by 10 inches high. At this size and focal length, the existing view image should be viewed from a distance 21 inches from the eye of the viewer.

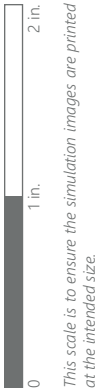


VIEWPOINT 36
Indian Field Road

Agricola Wind Project
Visual Impact Assessment, Appendix 8-A, Attachment D



PHOTOSIMULATION (1 OF 4)



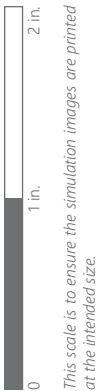
VIEWPOINT 36
Indian Field Road

Note: Printed at actual size, the resulting simulation image is 15 inches wide by 10 inches high. At this size and focal length, the simulation should be viewed from a distance 21 inches from the eye of the viewer.

EXISTING VIEW (2 OF 4)



Note: Printed at actual size, the existing view image is 15 inches wide by 10 inches high. At this size and focal length, the existing view image should be viewed from a distance 21 inches from the eye of the viewer.



VIEWPOINT 36
Indian Field Road



Note: Printed at actual size, the resulting simulation image is 15 inches wide by 10 inches high. At this size and focal length, the simulation should be viewed from a distance 21 inches from the eye of the viewer.



VIEWPOINT 36
Indian Field Road