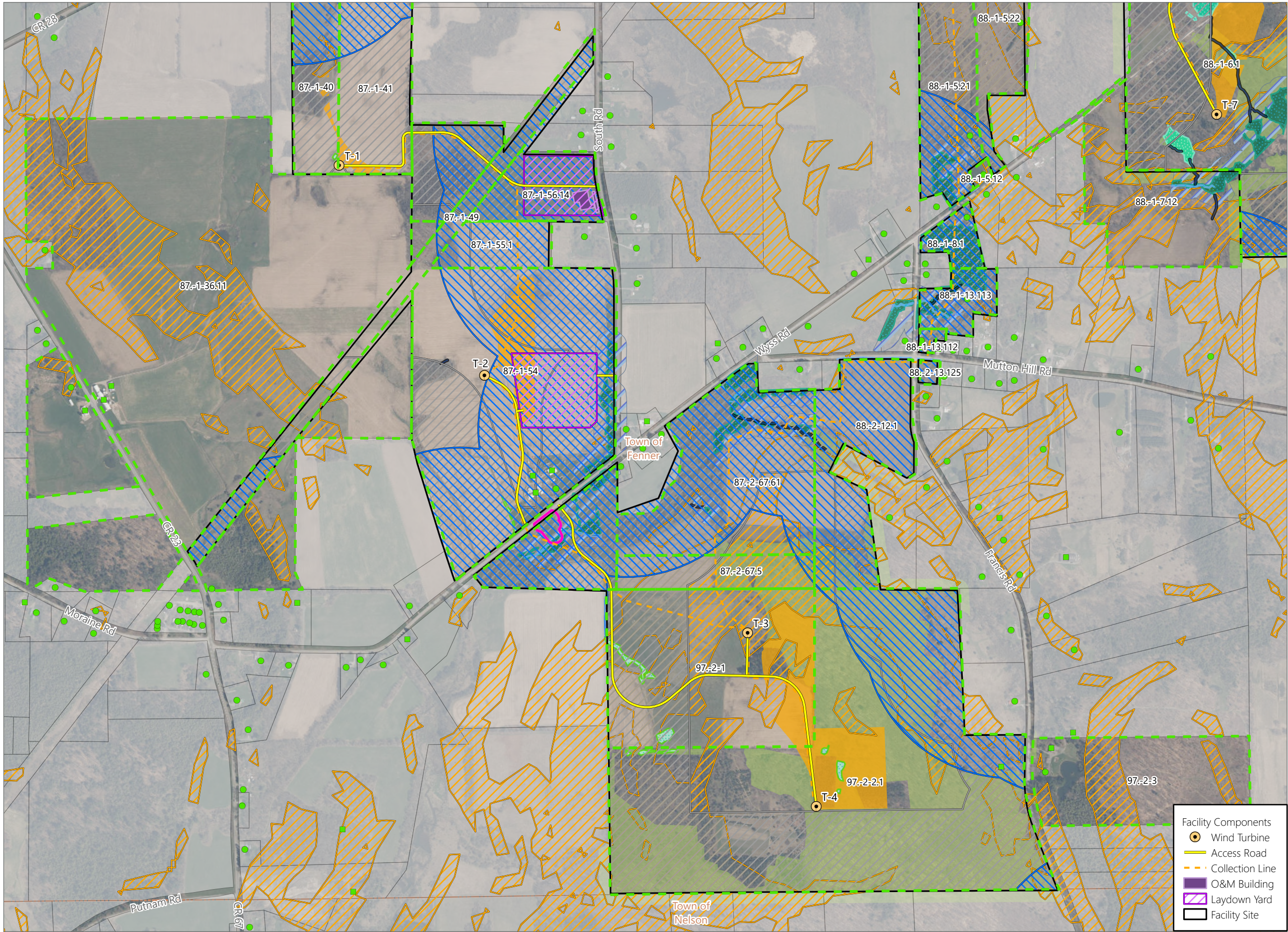


Figure 24-2. Wind Turbine Siting Constraints - Revision 2



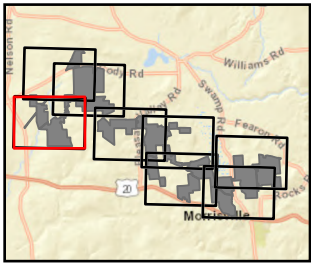
Hoffman Falls Wind

Towns of Eaton, Fenner, Nelson and
Smithfield, Madison County,
New York

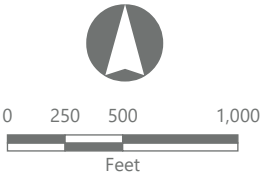
**Section 94-c Second Supplement
Matter No. 23-00038**

- Receptor
- Residential Structure
 - Other Structure
 - ▬ Participating Parcel
 - ▬ Non-Participating Parcel
 - ▨ 1.1x Non-Participating Property Line Setback
 - ▨ 2x Non-Participating Residence Setback
 - ▨ Steep Slope
 - ▨ Preliminary Turbine Siting Area
 - ▨ Core Upland Forest Block
- Wetlands and Streams
- ▨ Delineated Stream Non-Jurisdictional
 - ▨ Delineated Stream w/
Federal Jurisdictional
 - ▨ Delineated Stream w/
State & Federal Jurisdictional
 - ▨ Delineated Wetland Non-Jurisdictional
 - ▨ Delineated Wetland w/
Federal Jurisdictional
 - ▨ Delineated Wetland w/
State & Federal Jurisdictional
 - ▨ State-Regulated Adjacent Area (RAA)
 - ▨ Environmentally Sensitive Area

- Facility Components
- Wind Turbine
 - Access Road
 - Collection Line
 - O&M Building
 - Laydown Yard
 - Facility Site

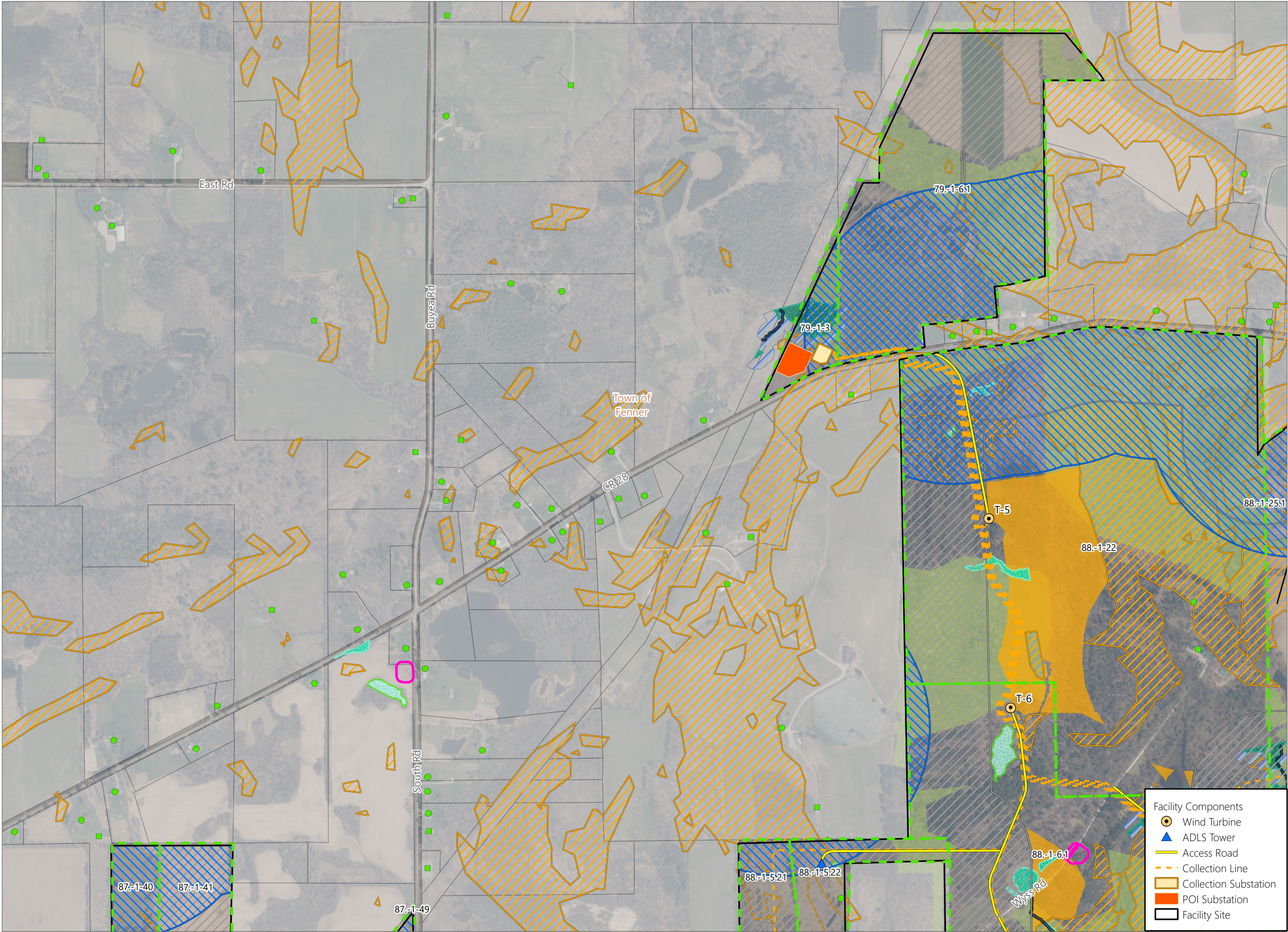


Sheet 1 of 8



Prepared October 16, 2024
Basemap: NYS DOP "2022" orthoimagery map service

Figure 24-2. Wind Turbine Siting Constraints - Revision 2



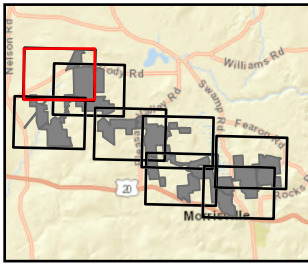
Hoffman Falls Wind

Towns of Eaton, Fenner, Nelson and
Smithfield, Madison County,
New York

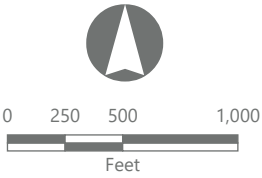
**Section 94-c Second Supplement
Matter No. 23-00038**

- Receptor
- Residential Structure
 - Other Structure
 - Participating Parcel
 - Non-Participating Parcel
 - 1.1x Non-Participating Property Line Setback
 - 2x Non-Participating Residence Setback
 - Steep Slope
 - Preliminary Turbine Siting Area
 - Core Upland Forest Block
- Wetlands and Streams
- Delineated Stream Non-Jurisdictional
 - Delineated Stream w/
Federal Jurisdictional
 - Delineated Wetland Non-Jurisdictional
 - Delineated Wetland w/
Federal Jurisdictional
 - Delineated Wetland w/
State & Federal Jurisdictional
 - State-Regulated Adjacent Area (RAA)
 - Environmentally Sensitive Area

- Facility Components
- Wind Turbine
 - ADLS Tower
 - Access Road
 - Collection Line
 - Collection Substation
 - POI Substation
 - Facility Site

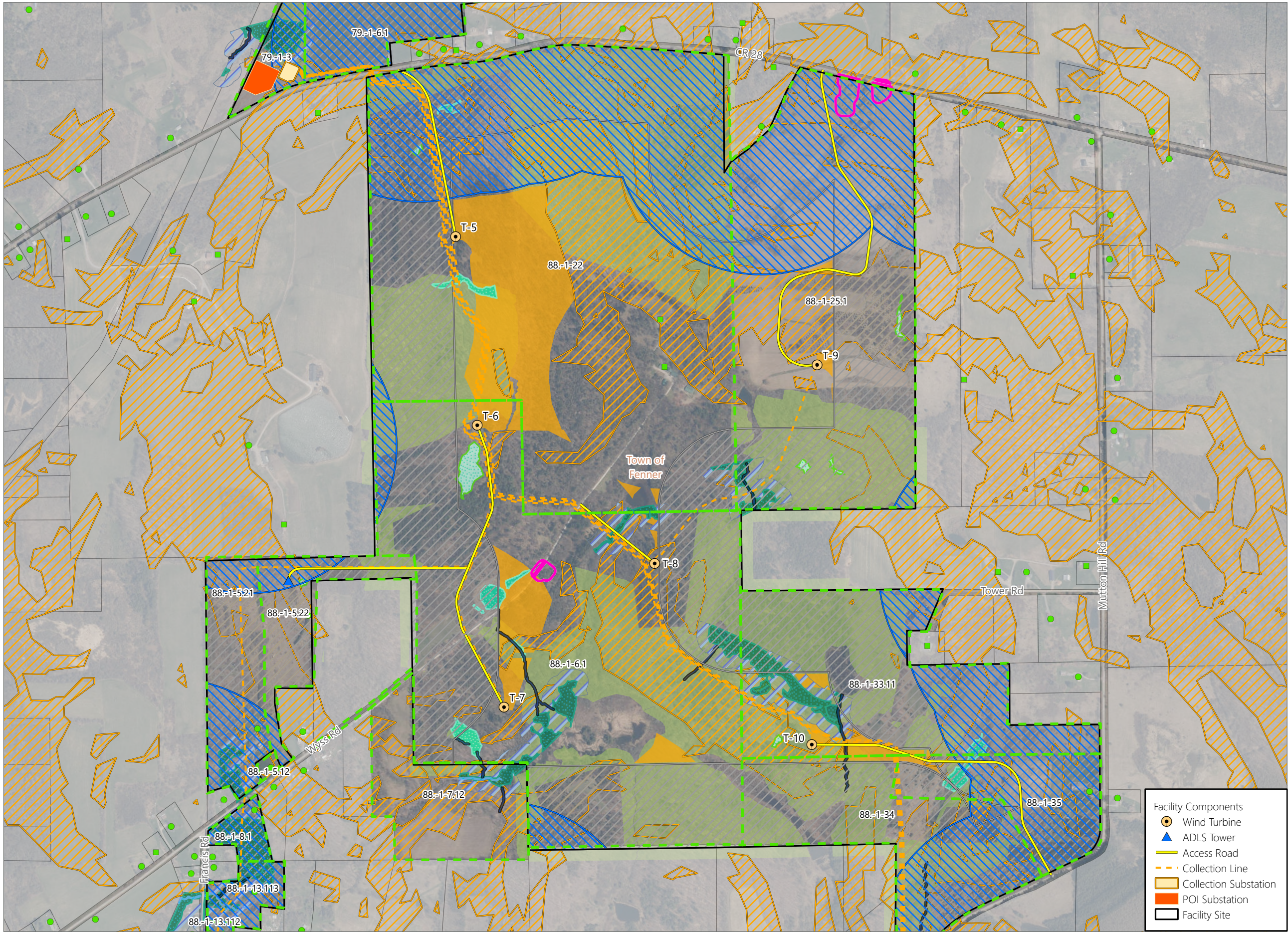


Sheet 2 of 8



Prepared October 16, 2024
Basemap: NYS DOP "2022" orthoimagery map service

Figure 24-2. Wind Turbine Siting Constraints - Revision 2



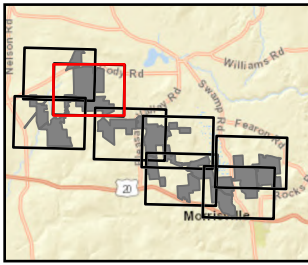
Hoffman Falls Wind

Towns of Eaton, Fenner, Nelson and
Smithfield, Madison County,
New York

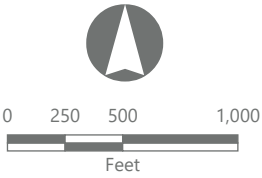
**Section 94-c Second Supplement
Matter No. 23-00038**

- Receptor
- Residential Structure
 - Other Structure
 - Participating Parcel
 - Non-Participating Parcel
 - ▨ 1.1x Non-Participating Property Line Setback
 - ▨ 2x Non-Participating Residence Setback
 - ▨ Steep Slope
 - Preliminary Turbine Siting Area
 - Core Upland Forest Block
- Wetlands and Streams
- Delineated Stream Non-Jurisdictional
 - Delineated Stream w/
Federal Jurisdictional
 - Delineated Stream w/
State & Federal Jurisdictional
 - Delineated Wetland Non-Jurisdictional
 - Delineated Wetland w/
Federal Jurisdictional
 - Delineated Wetland w/
State & Federal Jurisdictional
 - ▨ State-Regulated Adjacent Area (RAA)
 - Environmentally Sensitive Area

- Facility Components
- Wind Turbine
 - ▲ ADLS Tower
 - Access Road
 - - - Collection Line
 - Collection Substation
 - POI Substation
 - Facility Site

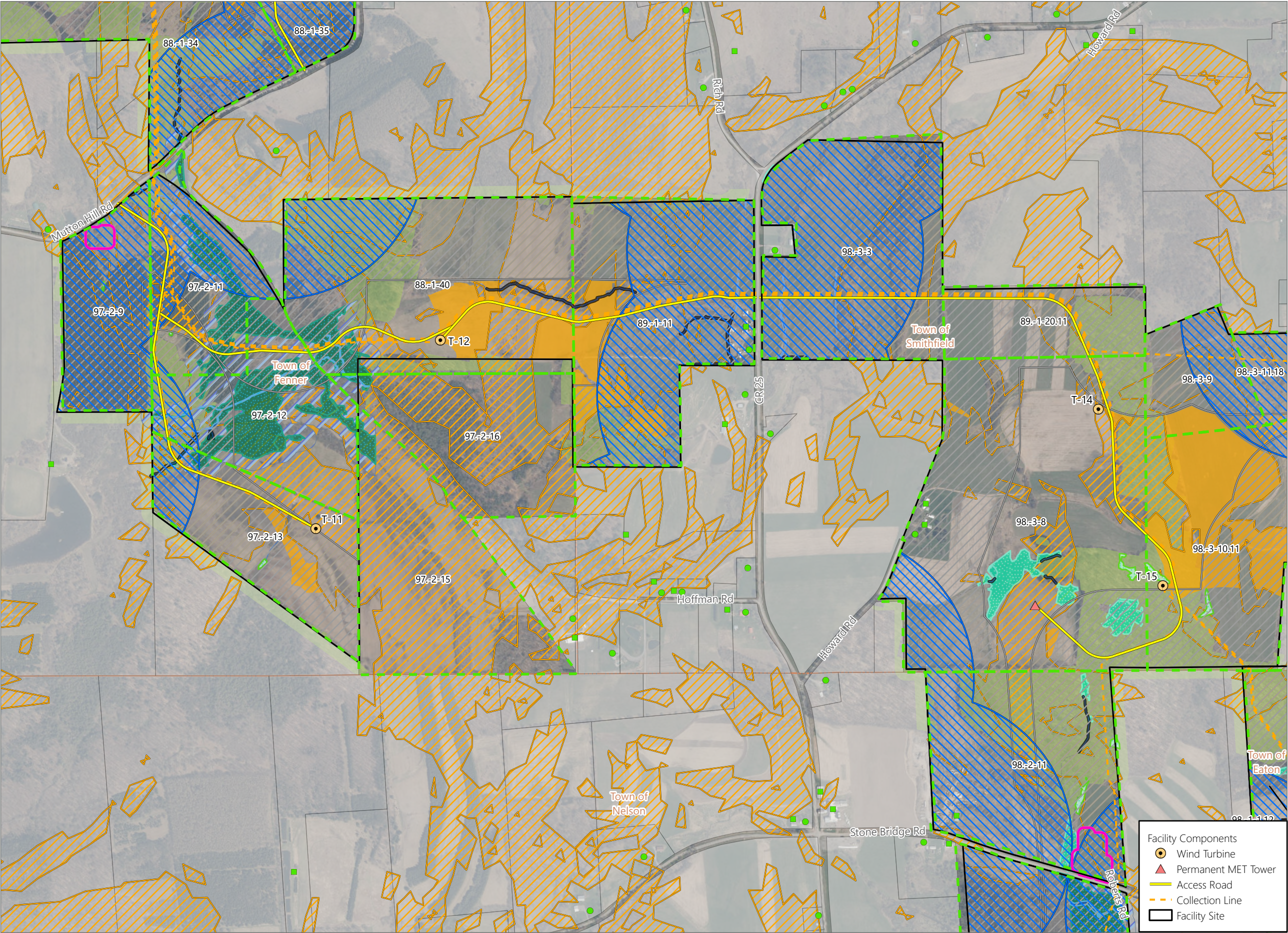


Sheet 3 of 8



Prepared October 16, 2024
Basemap: NYS DOP "2022" orthoimagery map service

Figure 24-2. Wind Turbine Siting Constraints - Revision 2



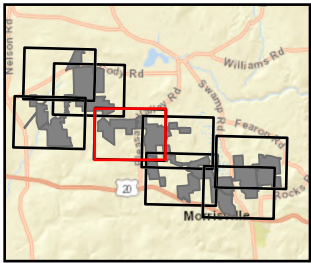
Hoffman Falls Wind

Towns of Eaton, Fenner, Nelson and
Smithfield, Madison County,
New York

**Section 94-c Second Supplement
Matter No. 23-00038**

- Receptor
- Residential Structure
 - Other Structure
 - Participating Parcel
 - Non-Participating Parcel
 - ▨ 1.1x Non-Participating Property Line Setback
 - ▨ 2x Non-Participating Residence Setback
 - ▨ Steep Slope
 - ▨ Preliminary Turbine Siting Area
 - ▨ Core Upland Forest Block
- Wetlands and Streams
- ▨ Delineated Stream Non-Jurisdictional
 - ▨ Delineated Stream w/
Federal Jurisdictional
 - ▨ Delineated Stream w/
State & Federal Jurisdictional
 - ▨ Delineated Wetland Non-Jurisdictional
 - ▨ Delineated Wetland w/
Federal Jurisdictional
 - ▨ Delineated Wetland w/
State & Federal Jurisdictional
 - ▨ State-Regulated Adjacent Area (RAA)
 - ▨ Environmentally Sensitive Area

- Facility Components
- Wind Turbine
 - ▲ Permanent MET Tower
 - Access Road
 - Collection Line
 - Facility Site



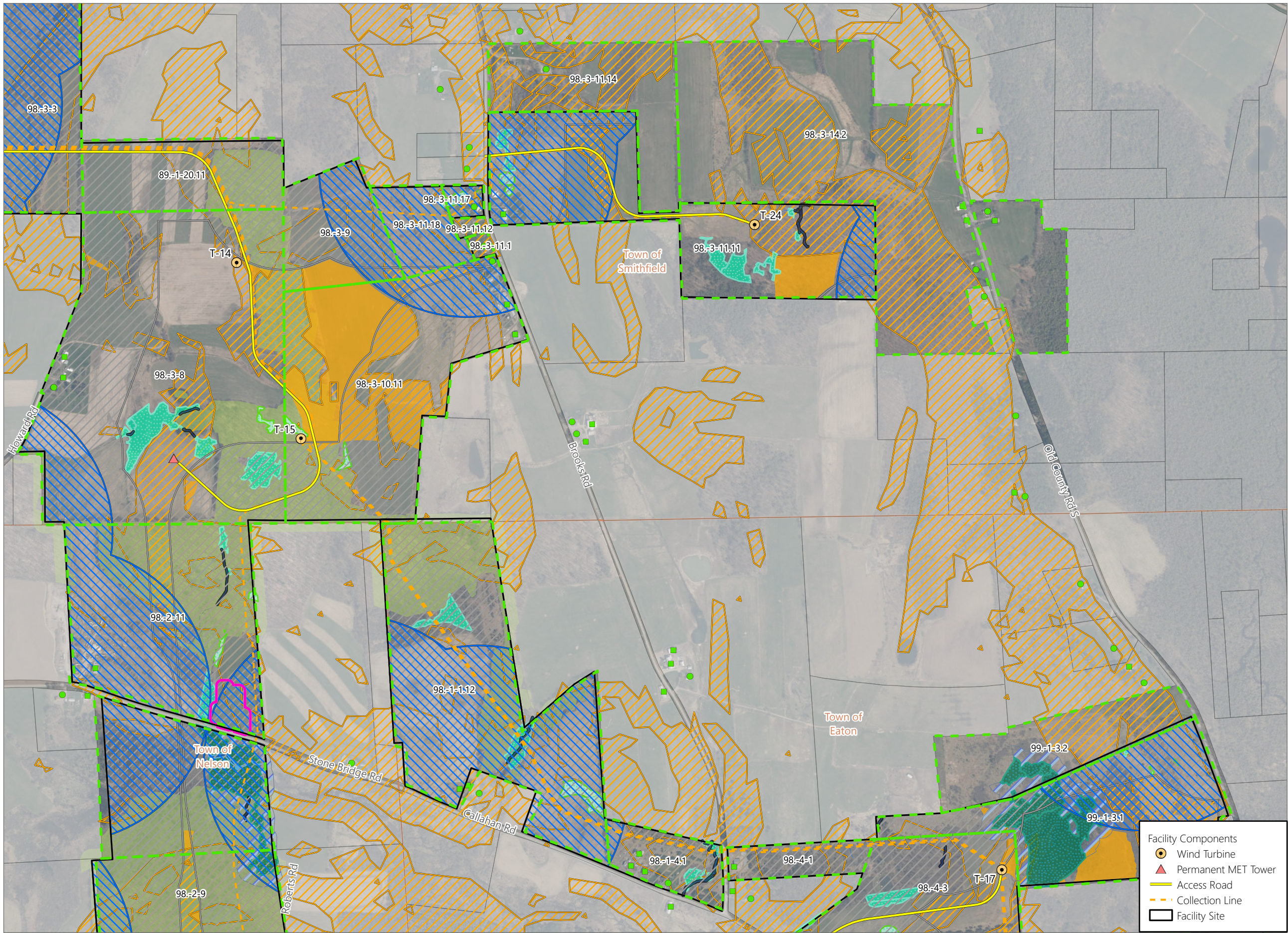
Sheet 4 of 8



0 250 500 1,000
Feet

Prepared October 16, 2024
Basemap: NYSDOP "2022" orthoimagery map service

Figure 24-2. Wind Turbine Siting Constraints - Revision 2



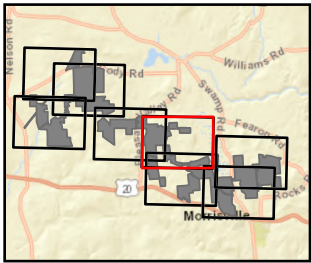
Hoffman Falls Wind

Towns of Eaton, Fenner, Nelson and
Smithfield, Madison County,
New York

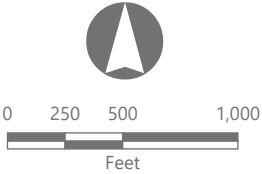
**Section 94-c Second Supplement
Matter No. 23-00038**

- Receptor
- Residential Structure
 - Other Structure
 - Participating Parcel
 - Non-Participating Parcel
 - 1.1x Non-Participating Property Line Setback
 - 2x Non-Participating Residence Setback
 - Steep Slope
 - Preliminary Turbine Siting Area
 - Core Upland Forest Block
- Wetlands and Streams
- Delineated Stream Non-Jurisdictional
 - Delineated Stream w/
Federal Jurisdictional
 - Delineated Stream w/
State & Federal Jurisdictional
 - Delineated Wetland Non-Jurisdictional
 - Delineated Wetland w/
Federal Jurisdictional
 - Delineated Wetland w/
State & Federal Jurisdictional
 - State-Regulated Adjacent Area (RAA)
 - Environmentally Sensitive Area

- Facility Components
- Wind Turbine
 - ▲ Permanent MET Tower
 - Access Road
 - Collection Line
 - Facility Site

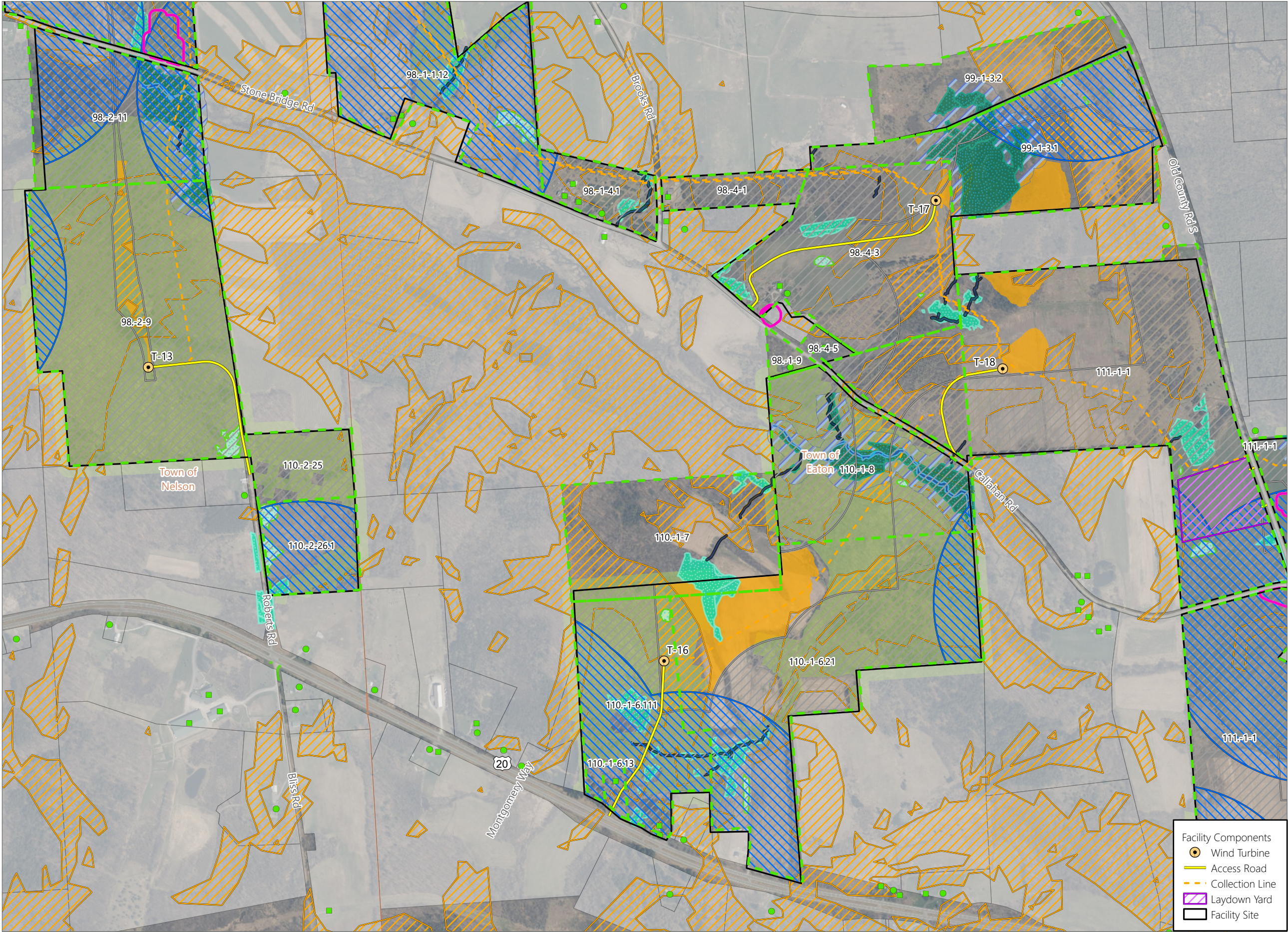


Sheet 5 of 8



Prepared October 16, 2024
Basemap: NYS DOP "2022" orthoimagery map service

Figure 24-2. Wind Turbine Siting Constraints - Revision 2



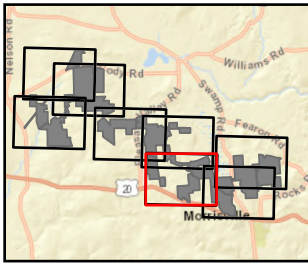
Hoffman Falls Wind

Towns of Eaton, Fenner, Nelson and
Smithfield, Madison County,
New York

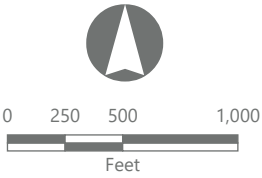
**Section 94-c Second Supplement
Matter No. 23-00038**

- Receptor
- Residential Structure
 - Other Structure
 - Participating Parcel
 - Non-Participating Parcel
 - 1.1x Non-Participating Property Line Setback
 - 2x Non-Participating Residence Setback
 - Steep Slope
 - Preliminary Turbine Siting Area
 - Core Upland Forest Block
- Wetlands and Streams
- Delineated Stream Non-Jurisdictional
 - Delineated Stream w/
Federal Jurisdictional
 - Delineated Stream w/
State & Federal Jurisdictional
 - Delineated Wetland Non-Jurisdictional
 - Delineated Wetland w/
Federal Jurisdictional
 - Delineated Wetland w/
State & Federal Jurisdictional
 - State-Regulated Adjacent Area (RAA)
 - Environmentally Sensitive Area

- Facility Components
- Wind Turbine
 - Access Road
 - Collection Line
 - Laydown Yard
 - Facility Site

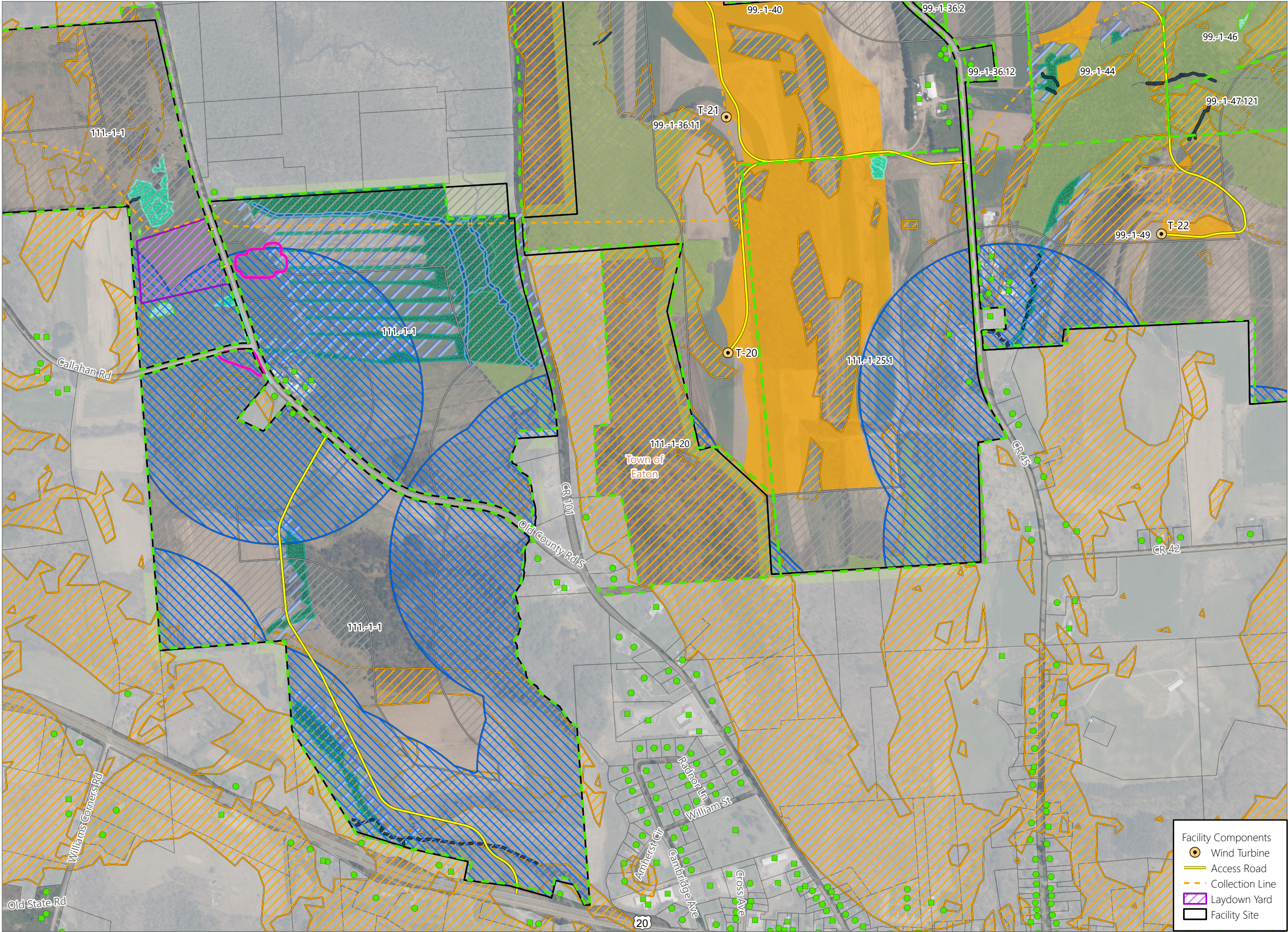


Sheet 6 of 8



Prepared October 16, 2024
Basemap: NYS DOP "2022" orthoimagery map service

Figure 24-2. Wind Turbine Siting Constraints - Revision 2



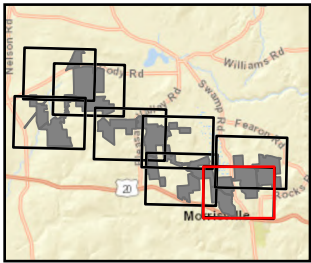
Hoffman Falls Wind

Towns of Eaton, Fenner, Nelson and
Smithfield, Madison County,
New York

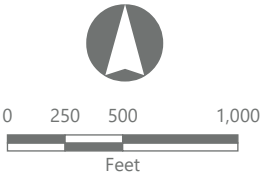
**Section 94-c Second Supplement
Matter No. 23-00038**

- Receptor
- Residential Structure
 - Other Structure
 - Participating Parcel
 - Non-Participating Parcel
 - 1.1x Non-Participating Property Line Setback
 - 2x Non-Participating Residence Setback
 - Steep Slope
 - Preliminary Turbine Siting Area
 - Core Upland Forest Block
- Wetlands and Streams
- Delineated Stream Non-Jurisdictional
 - Delineated Stream w/
Federal Jurisdictional
 - Delineated Stream w/
State & Federal Jurisdictional
 - Delineated Wetland Non-Jurisdictional
 - Delineated Wetland w/
Federal Jurisdictional
 - Delineated Wetland w/
State & Federal Jurisdictional
 - State-Regulated Adjacent Area (RAA)
 - Environmentally Sensitive Area

- Facility Components
- Wind Turbine
 - Access Road
 - Collection Line
 - Laydown Yard
 - Facility Site

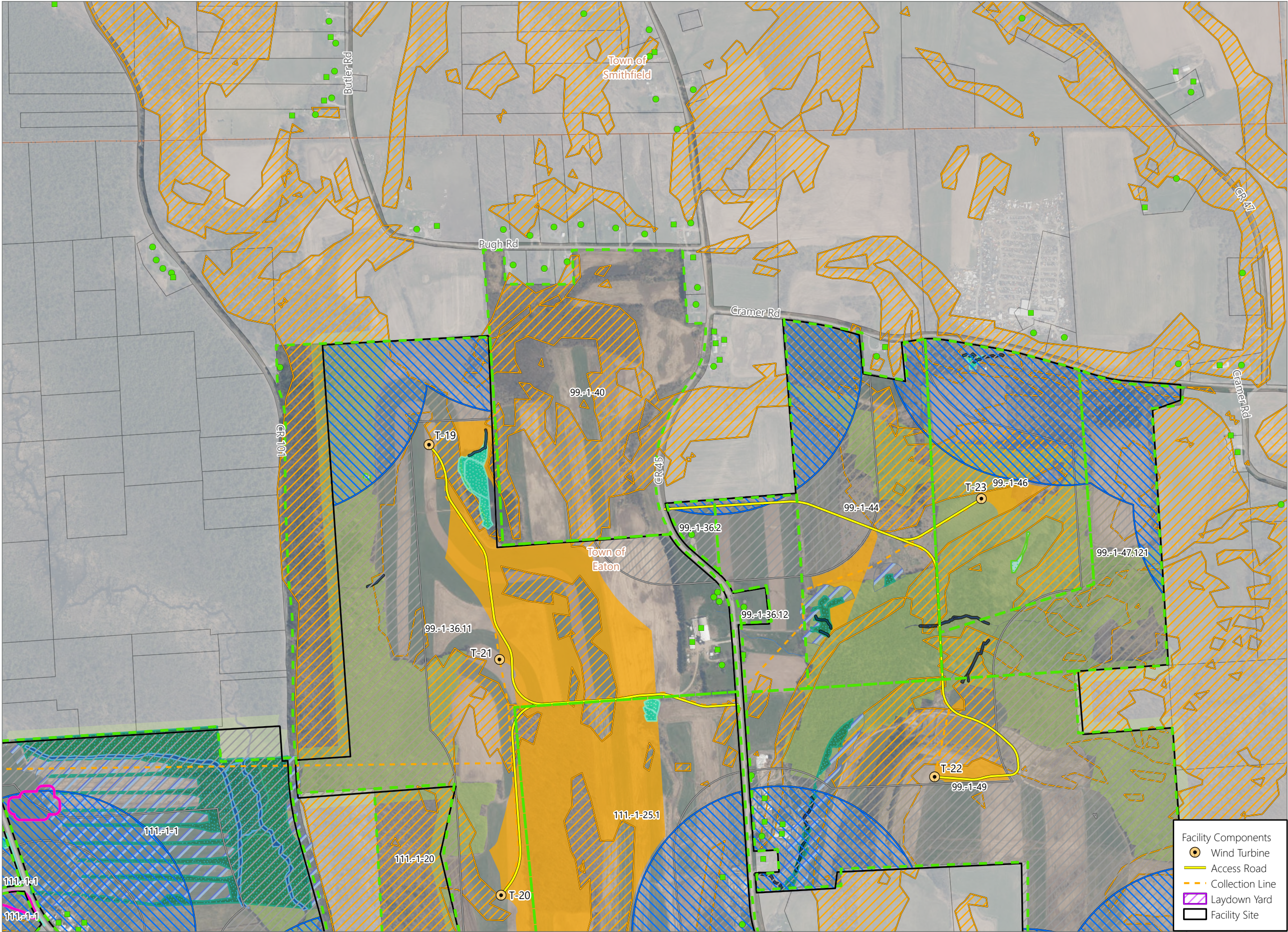


Sheet 7 of 8



Prepared October 16, 2024
Basemap: NYS DOP "2022" orthoimagery map service

Figure 24-2. Wind Turbine Siting Constraints - Revision 2



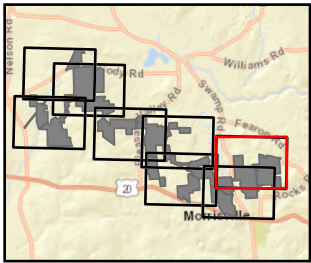
Hoffman Falls Wind

Towns of Eaton, Fenner, Nelson and
Smithfield, Madison County,
New York

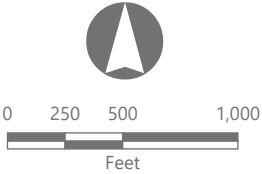
**Section 94-c Second Supplement
Matter No. 23-00038**

- Receptor
- Residential Structure
 - Other Structure
 - Participating Parcel
 - Non-Participating Parcel
 - ▨ 1.1x Non-Participating Property Line Setback
 - ▨ 2x Non-Participating Residence Setback
 - ▨ Steep Slope
 - Preliminary Turbine Siting Area
 - Core Upland Forest Block
- Wetlands and Streams
- Delineated Stream Non-Jurisdictional
 - ▨ Delineated Stream w/
Federal Jurisdictional
 - ▨ Delineated Stream w/
State & Federal Jurisdictional
 - ▨ Delineated Wetland Non-Jurisdictional
 - ▨ Delineated Wetland w/
Federal Jurisdictional
 - ▨ Delineated Wetland w/
State & Federal Jurisdictional
 - ▨ State-Regulated Adjacent Area (RAA)
 - Environmentally Sensitive Area

- Facility Components
- Wind Turbine
 - Access Road
 - - - Collection Line
 - Laydown Yard
 - Facility Site



Sheet 8 of 8



Prepared October 16, 2024
Basemap: NYSDOP "2022" orthoimagery map service