

PHOTOSIMULATION 5-7 YEARS POST INSTALLATION (MITIGATION - LEAF OFF)



Note: Printed at actual size, the resulting simulation image is 15 inches wide by 10 inches high. At this size and focal length, the simulation should be viewed from a distance 21 inches from the eye of the viewer.



VIEWPOINT 70
South Road

Hoffman Falls Wind Project
Towns of Eaton, Fenner, Nelson, and Smithfield, Madison County, New York



REVISED PHOTOSIMULATION 5-7 YEARS POST INSTALLATION (MITIGATION - LEAF OFF)



Note: Printed at actual size, the resulting simulation image is 15 inches wide by 10 inches high. At this size and focal length, the simulation should be viewed from a distance 21 inches from the eye of the viewer.

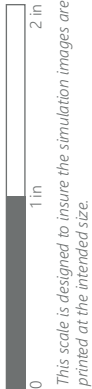


VIEWPOINT 70
South Road

Hoffman Falls Wind Project
Towns of Eaton, Fenner, Nelson, and Smithfield, Madison County, New York



PHOTOSIMULATION 5-7 YEARS POST INSTALLATION (MITIGATION - LEAF ON)



VIEWPOINT 70
South Road

Hoffman Falls Wind Project
Towns of Eaton, Fenner, Nelson, and Smithfield, Madison County, New York

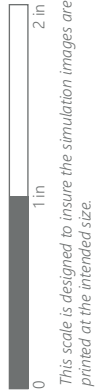


Note: Printed at actual size, the resulting simulation image is 15 inches wide by 10 inches high. At this size and focal length, the simulation should be viewed from a distance 21 inches from the eye of the viewer.

REVISED PHOTOSIMULATION 5-7 YEARS POST INSTALLATION (MITIGATION - LEAF ON)



Note: Printed at actual size, the resulting simulation image is 15 inches wide by 10 inches high. At this size and focal length, the simulation should be viewed from a distance 21 inches from the eye of the viewer.



VIEWPOINT 70
South Road

Hoffman Falls Wind Project
Towns of Eaton, Fenner, Nelson, and Smithfield, Madison County, New York



PHOTOSIMULATION POST INSTALLATION (MITIGATION - LEAF OFF)



Note: Printed at actual size, the resulting simulation image is 15 inches wide by 10 inches high. At this size and focal length, the simulation should be viewed from a distance 21 inches from the eye of the viewer.



VIEWPOINT 70
South Road

Hoffman Falls Wind Project
Towns of Eaton, Fenner, Nelson, and Smithfield, Madison County, New York



REVISED PHOTOSIMULATION POST INSTALLATION (MITIGATION - LEAF OFF)



Note: Printed at actual size, the resulting simulation image is 15 inches wide by 10 inches high. At this size and focal length, the simulation should be viewed from a distance 21 inches from the eye of the viewer.



VIEWPOINT 70
South Road

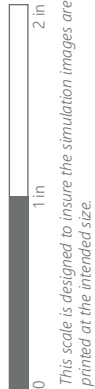
Hoffman Falls Wind Project
Towns of Eaton, Fenner, Nelson, and Smithfield, Madison County, New York



PHOTOSIMULATION POST INSTALLATION (MITIGATION - LEAF ON)



Note: Printed at actual size, the resulting simulation image is 15 inches wide by 10 inches high. At this size and focal length, the simulation should be viewed from a distance 21 inches from the eye of the viewer.



VIEWPOINT 70
South Road

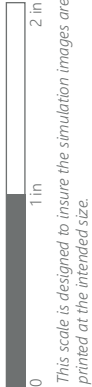
Hoffman Falls Wind Project
Towns of Eaton, Fenner, Nelson, and Smithfield, Madison County, New York



REVISED PHOTOSIMULATION POST INSTALLATION (MITIGATION - LEAF ON)



Note: Printed at actual size, the resulting simulation image is 15 inches wide by 10 inches high. At this size and focal length, the simulation should be viewed from a distance 21 inches from the eye of the viewer.



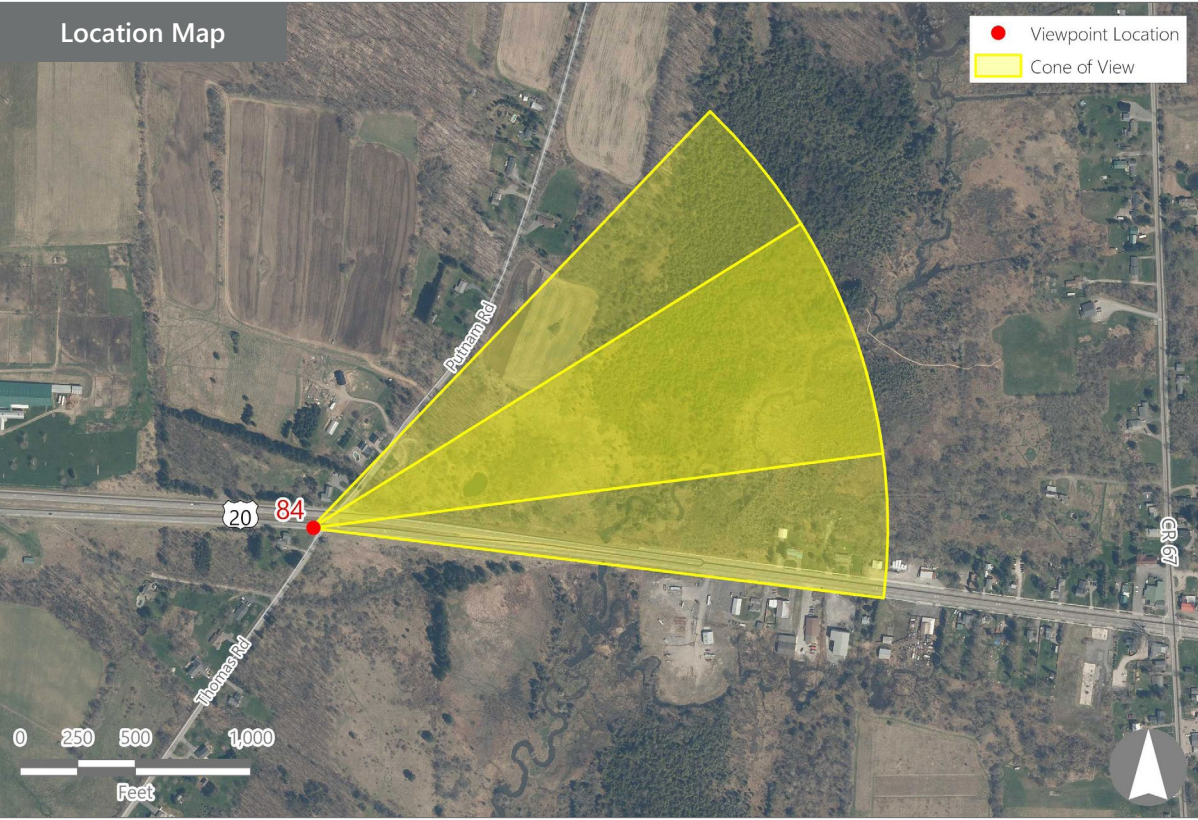
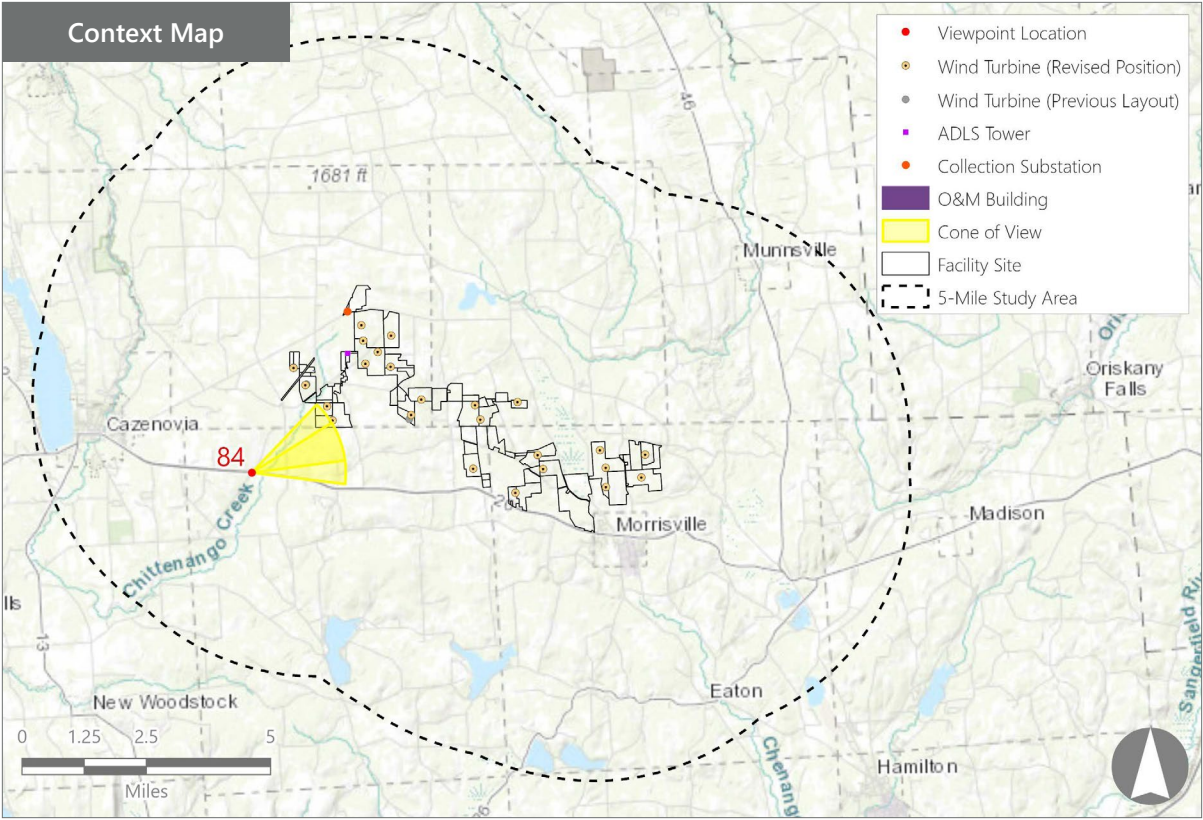
VIEWPOINT 70
South Road

Hoffman Falls Wind Project
Towns of Eaton, Fenner, Nelson, and Smithfield, Madison County, New York





Note: The image above is a panorama photograph taken from US Route 20 and Putnam Road in the Town of Nelson panning clockwise from north (left) to southeast (right). The green rectangle represents the extent of the simulated photograph.



Hoffman Falls Wind Project

Towns of Eaton, Fenner, Nelson, and Smithfield, Madison County, New York

Visual Impact Assessment Addendum
Appendix 8-A

VIEWPOINT 84

US Route 20 & Putnam Road

VIEWPOINT INFORMATION

Location: US Route 20 & Putnam Road

Town: Nelson

County: Madison

Latitude: 42.91844° N

Longitude: 75.79049° W

LOCATION INFORMATION

Distance Zone Represented in View: Middle

Ground

Viewer Distance*: 1.9 miles

Landscape Similarity Zone: Agricultural/Rural

Residential

Viewer/User Group(s): Local Residents, Through-
Travelers, Tourists/Recreational Users

Visually Sensitive Resource(s): Town of Nelson
Scenic Overlay District, Bicentennial Architectural
Trail, Scenic Route 20

PHOTOGRAPH INFORMATION

Date: April 16, 2024

Time: 12:49 PM

Camera: Canon EOS 5D Mark IV

Resolution: 30.4 Megapixels

Lens Focal Length (35mm equivalent): 51 mm

Camera Elevation: 1,505 feet

Field of View: 39 degrees

Direction of View: East-Northeast

Printed Size: 10" x 15"

Viewing Distance:** 21"

NOTES

*Distance as measured from the viewpoint to the
closest wind turbine generator within the simulated
photograph's field of view.

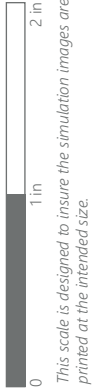
**The simulation is at the correct perspective when
printed on an 11 inch by 17 inch sheet at full scale,
and viewed approximately 21 inches from the eye of
the viewer.

Viewpoint 84 is approximately 4.5 miles from
turbine T-13.



EXISTING VIEW

Note: Printed at actual size, the existing view image is 15 inches wide by 10 inches high. At this size and focal length, the existing view image should be viewed from a distance 21 inches from the eye of the viewer.



VIEWPOINT 84
US Route 20 & Putnam Road

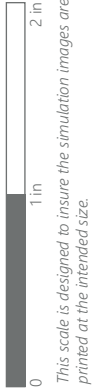
Hoffman Falls Wind Project
Towns of Eaton, Fenner, Nelson, and Smithfield, Madison County, New York





PHOTOSIMULATION

Note: Printed at actual size, the resulting simulation image is 15 inches wide by 10 inches high. At this size and focal length, the simulation should be viewed from a distance 21 inches from the eye of the viewer.



VIEWPOINT 84
US Route 20 & Putnam Road

Towns of Eaton, Fenner, Nelson, and Smithfield, Madison County, New York

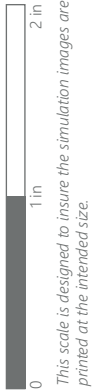
Hoffman Falls Wind Project





REVISED PHOTOSIMULATION

Note: Printed at actual size, the resulting simulation image is 15 inches wide by 10 inches high. At this size and focal length, the simulation should be viewed from a distance 21 inches from the eye of the viewer.



VIEWPOINT 84
US Route 20 & Putnam Road

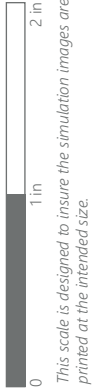
Hoffman Falls Wind Project
Towns of Eaton, Fenner, Nelson, and Smithfield, Madison County, New York





EXISTING VIEW

Note: Printed at actual size, the existing view image is 15 inches wide by 10 inches high. At this size and focal length, the existing view image should be viewed from a distance 21 inches from the eye of the viewer.



VIEWPOINT 84
US Route 20 & Putnam Road

Hoffman Falls Wind Project
Towns of Eaton, Fenner, Nelson, and Smithfield, Madison County, New York



PHOTOSIMULATION



Note: Printed at actual size, the resulting simulation image is 15 inches wide by 10 inches high. At this size and focal length, the simulation should be viewed from a distance 21 inches from the eye of the viewer.

0 1in 2 in
This scale is designed to insure the simulation images are printed at the intended size.

VIEWPOINT 84
US Route 20 & Putnam Road

Hoffman Falls Wind Project
Towns of Eaton, Fenner, Nelson, and Smithfield, Madison County, New York



REVISED PHOTOSIMULATION



Note: Printed at actual size, the resulting simulation image is 15 inches wide by 10 inches high. At this size and focal length, the simulation should be viewed from a distance 21 inches from the eye of the viewer.

0 1in 2 in
This scale is designed to insure the simulation images are printed at the intended size.

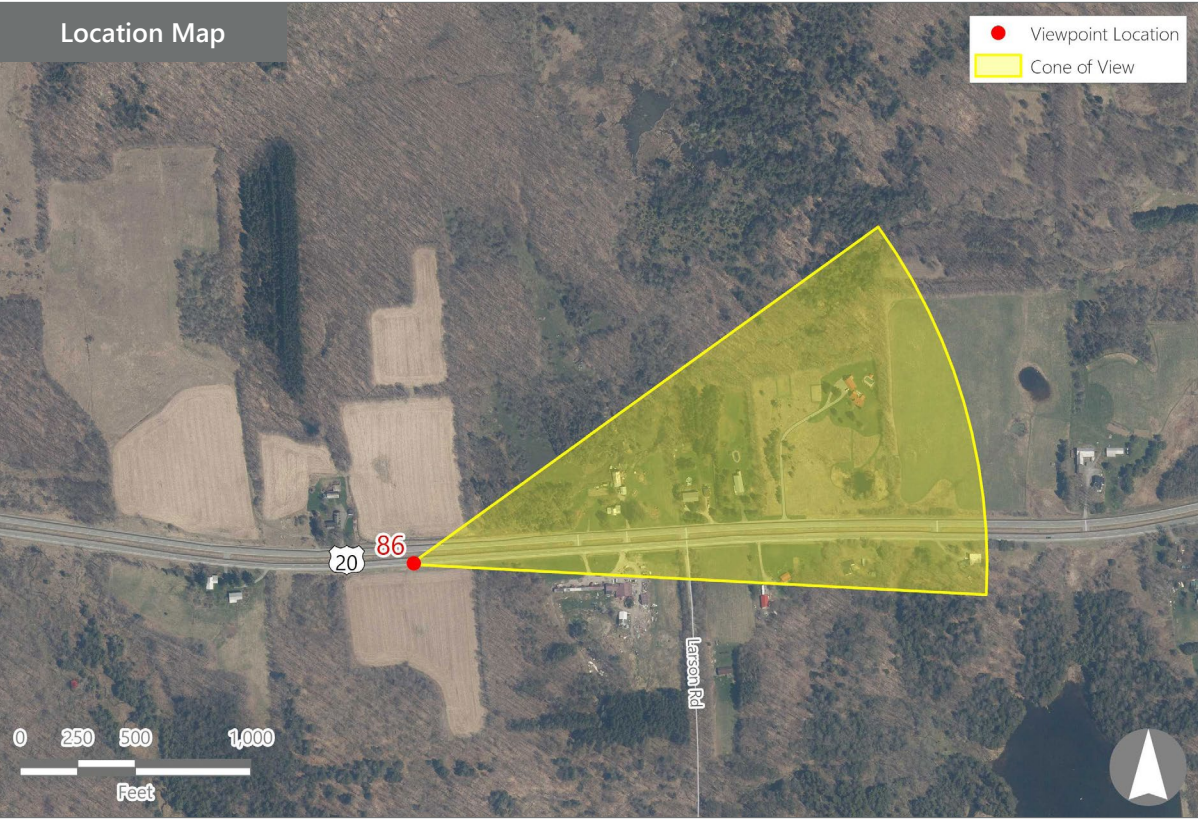
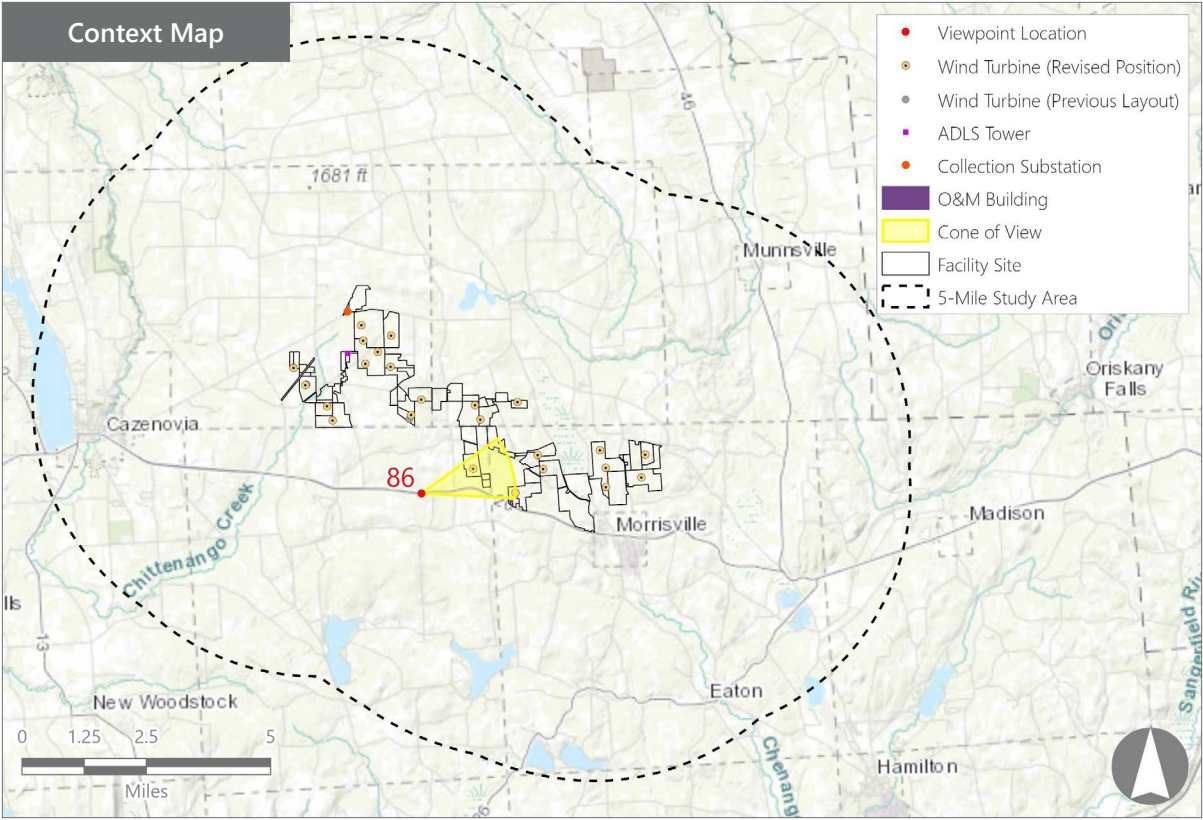
VIEWPOINT 84
US Route 20 & Putnam Road

Hoffman Falls Wind Project
Towns of Eaton, Fenner, Nelson, and Smithfield, Madison County, New York

EDR



Note: The image above is a panorama photograph taken from US route 20 in the Town of Nelson panning clockwise from northwest (left) to southeast (right). The green rectangle represents the extent of the simulated photograph.



VIEWPOINT 86
US Route 20

VIEWPOINT INFORMATION

Location: US Route 20
Town: Nelson
County: Madison
Latitude: 42.91189° N
Longitude: 75.72332° W

LOCATION INFORMATION

Distance Zone Represented in View: Middle Ground
Viewer Distance*: 1.2 miles
Landscape Similarity Zone: Agricultural/Rural Residential

Viewer/User Group(s): Local Residents, Through-Travelers, Tourists/Recreational Users
Visually Sensitive Resource(s): Town of Nelson Scenic Overlay District, Bicentennial Architectural Trail, Scenic Route 20

PHOTOGRAPH INFORMATION

Date: April 16, 2024
Time: 11:57 AM
Camera: Canon EOS 5D Mark IV
Resolution: 30.4 Megapixels
Lens Focal Length (35mm equivalent): 51 mm
Camera Elevation: 1,672 feet
Field of View: 39 degrees
Direction of View: East-Northeast
Printed Size: 10" x 15"
Viewing Distance:** 21"

NOTES

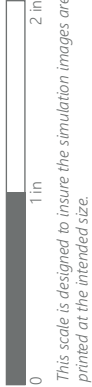
*Distance as measured from the viewpoint to the closest wind turbine generator within the simulated photograph's field of view.
**The simulation is at the correct perspective when printed on an 11 inch by 17 inch sheet at full scale, and viewed approximately 21 inches from the eye of the viewer.
Viewpoint 86 is approximately 1.2 miles from turbine T-13.

Hoffman Falls Wind Project
Towns of Eaton, Fenner, Nelson, and Smithfield, Madison County, New York

EXISTING VIEW



Note: Printed at actual size, the existing view image is 15 inches wide by 10 inches high. At this size and focal length, the existing view image should be viewed from a distance 21 inches from the eye of the viewer.



VIEWPOINT 86
US Route 20

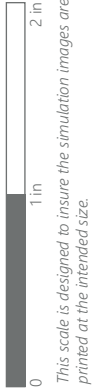
Hoffman Falls Wind Project
Towns of Eaton, Fenner, Nelson, and Smithfield, Madison County, New York



PHOTOSIMULATION



Note: Printed at actual size, the resulting simulation image is 15 inches wide by 10 inches high. At this size and focal length, the simulation should be viewed from a distance 21 inches from the eye of the viewer.



VIEWPOINT 86
US Route 20

Hoffman Falls Wind Project
Towns of Eaton, Fenner, Nelson, and Smithfield, Madison County, New York

