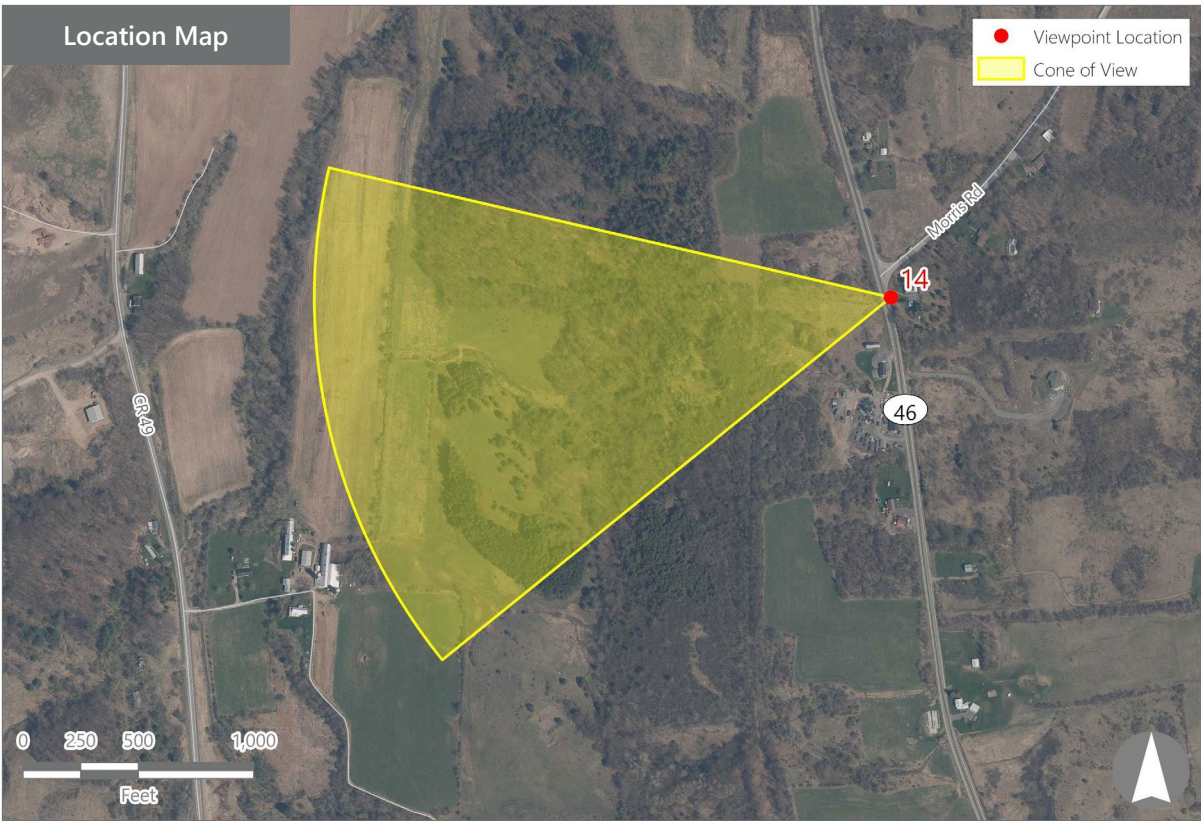
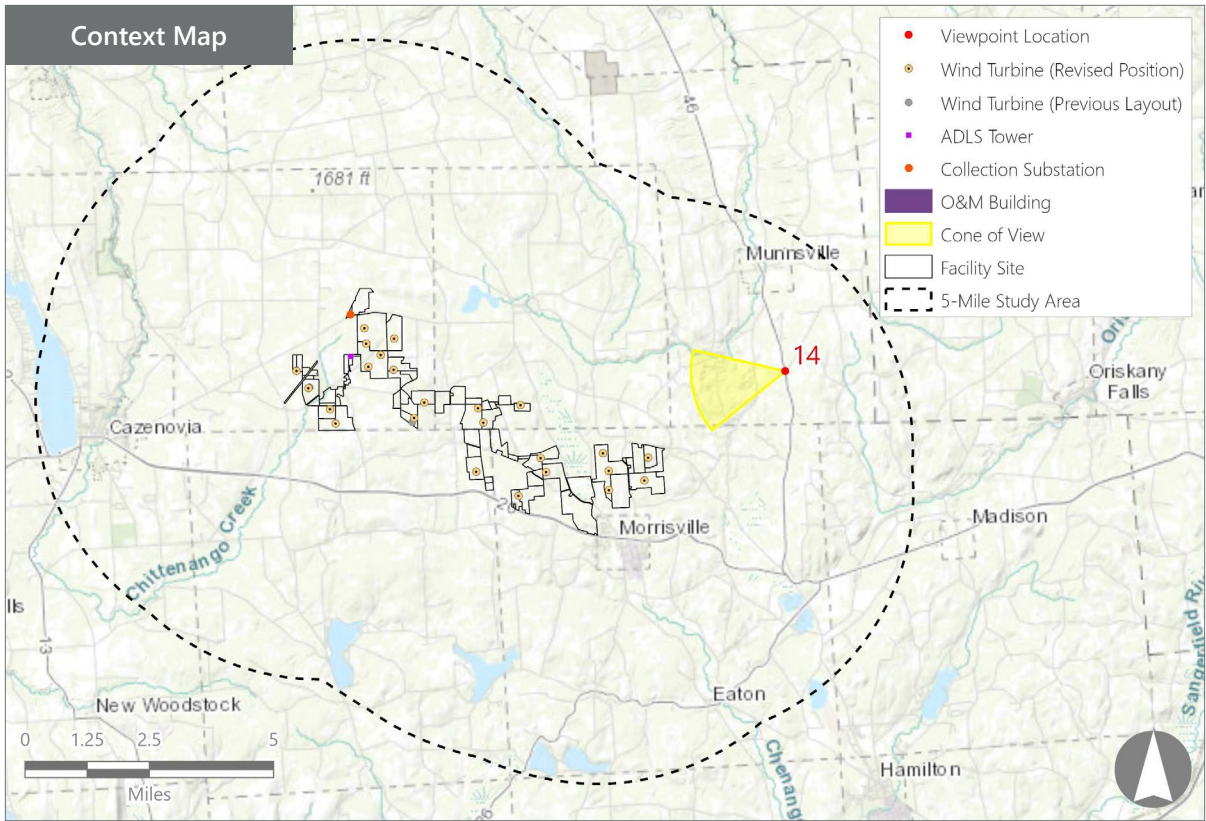


*Note: The image above is a panorama photograph taken from NYS Route 46 in the Town of Stockbridge panning clockwise from southwest (left) to northwest (right). The green rectangle represents the extent of the simulated photograph.*



## VIEWPOINT 14

NYS Route 46

### VIEWPOINT INFORMATION

**Location:** NYS Route 46

**Town:** Stockbridge

**County:** Madison

**Latitude:** 42.94724° N

**Longitude:** 75.57975° W

### LOCATION INFORMATION

**Distance Zone Represented in View:** Middle  
Ground

**Viewer Distance\*:** 3.3 miles

**Landscape Similarity Zone:** Agricultural/Rural  
Residential

**Viewer/User Group(s):** Local Residents, Through-  
Travelers

**Visually Sensitive Resource(s):** NYS Route 46,  
Erie Canalway National Heritage Corridor

### PHOTOGRAPH INFORMATION

**Date:** August 31, 2023

**Time:** 9:43 AM

**Camera:** Canon EOS 5D Mark IV

**Resolution:** 24 Megapixels

**Lens Focal Length (35mm equivalent):** 50 mm

**Camera Elevation:** 1,082 feet

**Field of View:** 39 degrees

**Direction of View:** West-Southwest

**Printed Size:** 10" x 15"

**Viewing Distance\*\*:** 21"

### NOTES

\*Distance as measured from the viewpoint to the closest wind turbine generator within the simulated photograph's field of view

\*\*The simulation is at the correct perspective when printed on an 11 inch by 17 inch sheet at full scale, and viewed approximately 21 inches from the eye of the viewer.

## Hoffman Falls Wind Project

Towns of Eaton, Fenner, Nelson, and Smithfield, Madison County, New York

Visual Impact Assessment Addendum  
Appendix 8-A



Viewpoint Sensitivity<sup>1</sup>:

- Scenic Quality:
- ☒ Low
- ☒ Moderate
- ☒ High
- Viewer Exposure
- Frequency:
- ☐ Rare
- ☐ Occasional
- ☒ Regular/Repeated
- Duration of View:
- ☐ Short/Brief/Fleeting
- ☒ Moderate
- ☒ Long

<sup>1</sup>Viewpoint Sensitivity information is gathered from rating panel results. Scenic Quality is an average based on Low = 1, Moderate = 2, High = 3. Viewer Exposure reflects all those selected by the review panel.

Contrast Rating Scores<sup>2</sup>:

Component	Score	Contrast Rating
	Install	
Landform	0.8	Minimal
Vegetation	0.8	Minimal
Land Use	1.3	Minimal/Moderate
Water	N/A	N/A
Sky	1.5	Minimal/Moderate
Viewer Activity	1.3	Minimal/Moderate
AVERAGE	1.2	Minimal

<sup>2</sup> Contrast Rating Scale: 0.0 - 0.2 (Insignificant), 0.3 – 0.7 (Insignificant/Minimal), 0.8 – 1.2 (Minimal), 1.3 – 1.7 (Minimal/Moderate), 1.8 - 2.2 (Moderate), 2.3 – 2.7 (Moderate/Appreciable), 2.8 – 3.2 (Appreciable) 3.3 – 3.7 Appreciable/Strong), 3.8 – 4.0 (Strong).

Contrast Rating - Lowest and Highest Scores:

Post - Install		
Component	Score	
	Low	High
Landform	0.5	1.0
Vegetation	0.5	4.0
Land Use	1.0	2.0
Water	NA	NA
Sky	1.0	2.0
Viewer Activity	1.0	2.0

Existing View



Proposed View (Post Installation)



Existing View

Viewpoint 14 is located on State Route 46 in the Town of Stockbridge, approximately 3.3 miles from the nearest proposed wind turbine that would be visible in the selected photo's field of view. This relatively high elevation viewpoint occurs in the Agricultural/Rural Residential LSZ but overlooks an area characterized by more abundant woody vegetation. Typical viewers at this location would be through travelers and local residents. In the selected view to the west-southwest, a guardrail at the edge of the highway is a prominent horizontal feature in the immediate foreground. Beyond the guardrail, the land descends into a shallow wooded valley. Forest vegetation is the dominant land cover and extends from the foreground to the distant background. The land rises from the middle ground to a ridgeline where the forest is broken by occasional open fields. Above the ridgeline, the sky is clear blue and uninterrupted by foreground trees or structures. The horizon line, guardrail, and road edge present strong horizontal lines in the landscape, and beyond the road edge, developed features are generally lacking. Elevated viewer perspective and the lack of large trees or structures in the foreground allow for uninterrupted long-distance views from this location. The scenic quality of this view was characterized as variable by the rating panel and indicated to range from low to high.

Proposed View

With the proposed Project in place, multiple wind turbines can be seen extending into the sky at and beyond the ridgeline that defines the horizon. The height/scale contrast of the turbines relative to trees on the ridgeline is notable. But their color contrast with the sky is limited due to lighting conditions, their white color, and distance from the viewer. Because they are closer and essentially unscreened by the ridgeline, turbines in the left half of the view are more prominent than those on the right. Limited color contrast and the effects of distance also reduce the contrast of the turbines' vertical lines with the horizontal features of the landscape. Although the wind turbines represent new focal points that draw viewer attention, the average contrast rating received was minimal indicating they do not significantly change the character or scenic quality of the existing view.

Hoffman Falls Wind Project

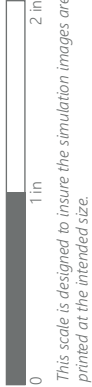
Towns of Eaton, Fenner, Nelson, and Smithfield, Madison County, New York



EXISTING VIEW



*Note: Printed at actual size, the resulting simulation image is 15 inches wide by 10 inches high. At this size and focal length, the simulation should be viewed from a distance 21 inches from the eye of the viewer.*



VIEWPOINT 14  
NYS Route 46

**Hoffman Falls Wind Project**  
Towns of Eaton, Fenner, Nelson, and Smithfield, Madison County, New York

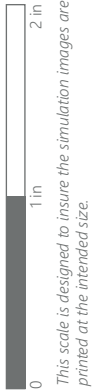




PHOTOSIMULATION



*Note: Printed at actual size, the existing view image is 15 inches wide by 10 inches high. At this size and focal length, the existing view image should be viewed from a distance 21 inches from the eye of the viewer.*



VIEWPOINT 14  
NYS Route 46

**Hoffman Falls Wind Project**  
Towns of Eaton, Fenner, Nelson, and Smithfield, Madison County, New York





REVISED PHOTOSIMULATION



*Note: Printed at actual size, the existing view image is 15 inches wide by 10 inches high. At this size and focal length, the existing view image should be viewed from a distance 21 inches from the eye of the viewer.*



This scale is designed to insure the simulation images are printed at the intended size.

VIEWPOINT 14  
NYS Route 46

**Hoffman Falls Wind Project**  
Towns of Eaton, Fenner, Nelson, and Smithfield, Madison County, New York

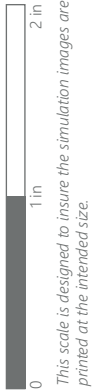




EXISTING VIEW



*Note: Printed at actual size, the resulting simulation image is 15 inches wide by 10 inches high. At this size and focal length, the simulation should be viewed from a distance 21 inches from the eye of the viewer.*



VIEWPOINT 14  
NYS Route 46

**Hoffman Falls Wind Project**  
Towns of Eaton, Fenner, Nelson, and Smithfield, Madison County, New York

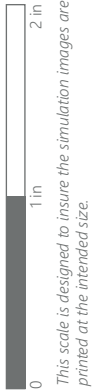




PHOTOSIMULATION



*Note: Printed at actual size, the resulting simulation image is 15 inches wide by 10 inches high. At this size and focal length, the simulation should be viewed from a distance 21 inches from the eye of the viewer.*



VIEWPOINT 14  
NYS Route 46

**Hoffman Falls Wind Project**  
Towns of Eaton, Fenner, Nelson, and Smithfield, Madison County, New York







*Note: Printed at actual size, the resulting simulation image is 15 inches wide by 10 inches high. At this size and focal length, the simulation should be viewed from a distance 21 inches from the eye of the viewer.*

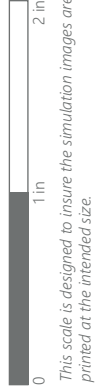


VIEWPOINT 14  
NYS Route 46

**Hoffman Falls Wind Project**  
Towns of Eaton, Fenner, Nelson, and Smithfield, Madison County, New York







VIEWPOINT 14  
NYS Route 46



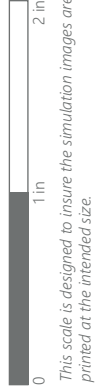


0 1 in 2 in  
This scale is designed to insure the simulation images are printed at the intended size.

VIEWPOINT 14  
NYS Route 46

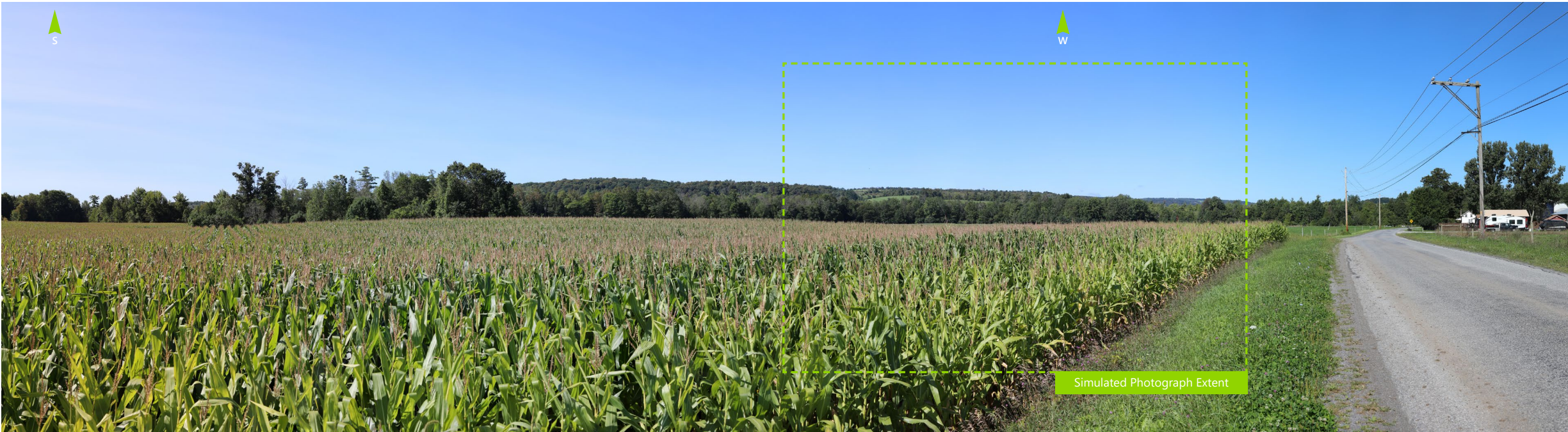
**Hoffman Falls Wind Project**  
Towns of Eaton, Fenner, Nelson, and Smithfield, Madison County, New York



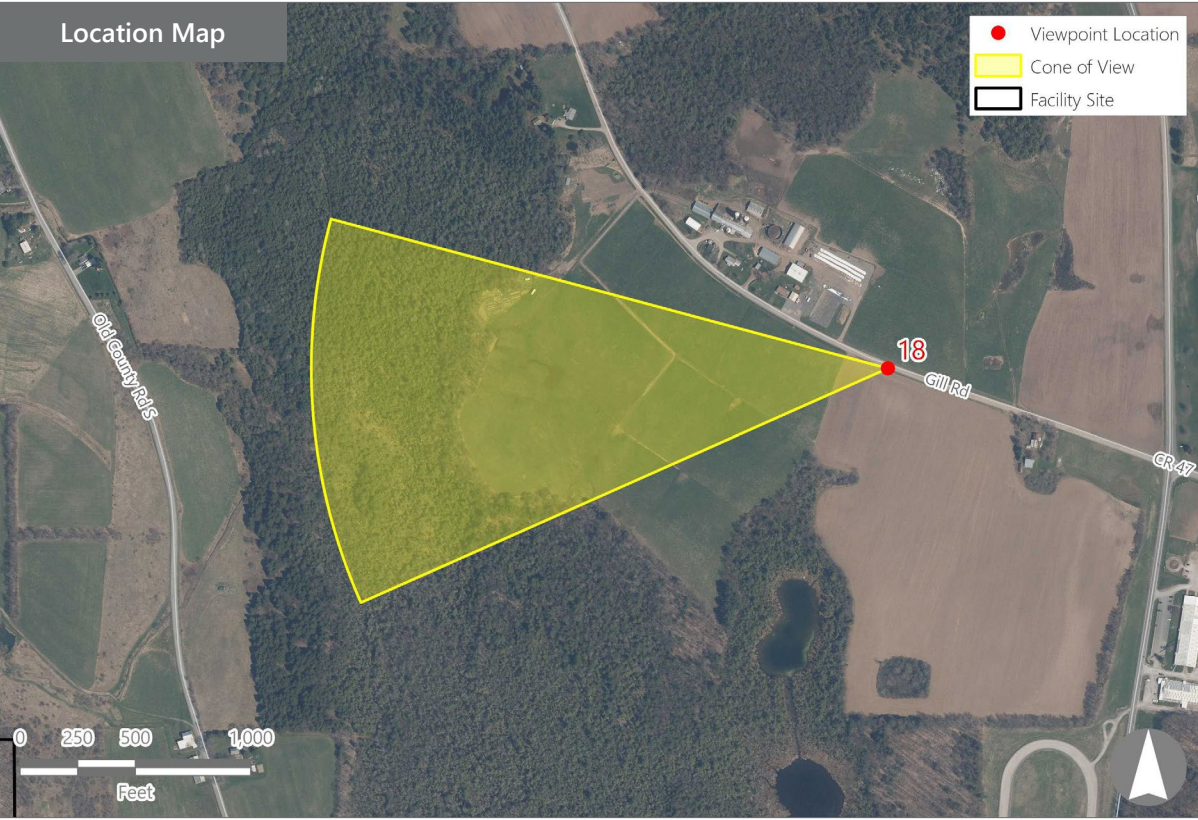
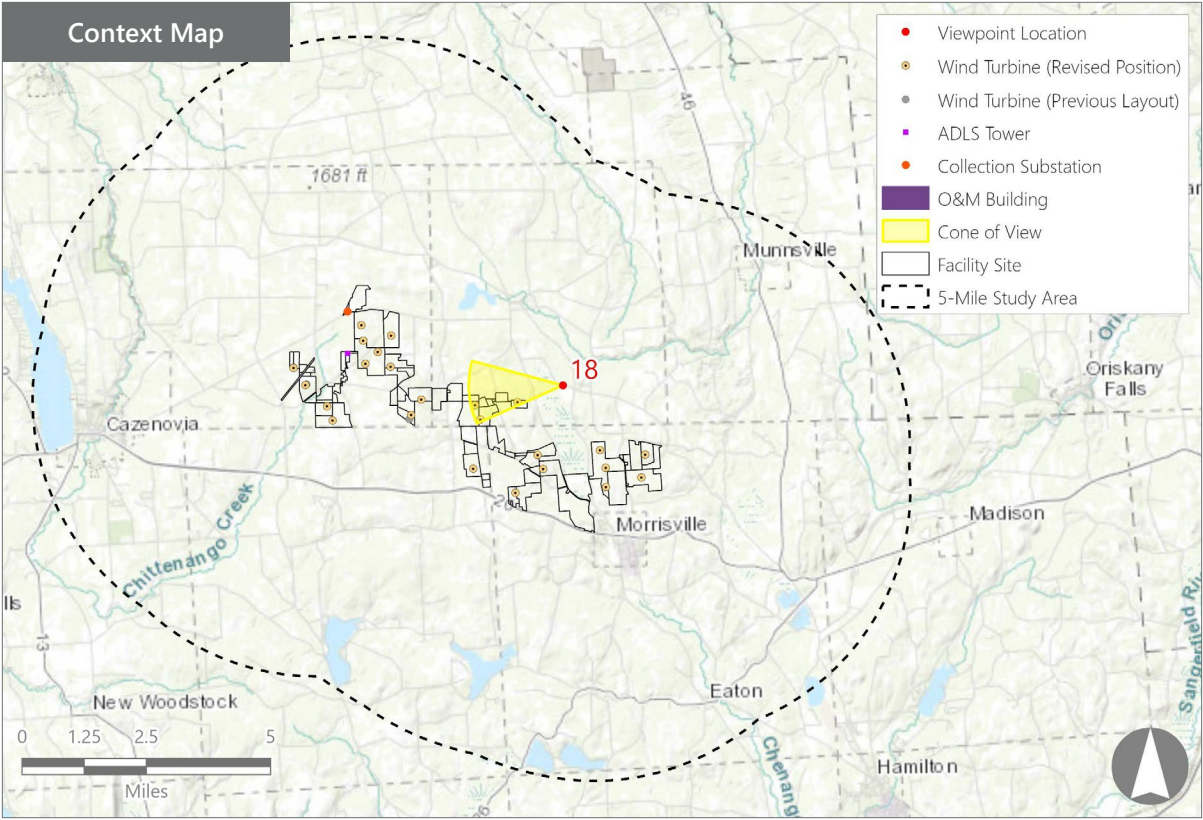


VIEWPOINT 14  
NYS Route 46





*Note: The image above is a panorama photograph taken from Gill Road in the Town of Smithfield panning clockwise from south (left) to northwest (right). The green rectangle represents the extent of the simulated photograph.*



**VIEWPOINT 18**  
Gill Road

**VIEWPOINT INFORMATION**

**Location:** Gill Road  
**Town:** Smithfield  
**County:** Madison  
**Latitude:** 42.94291° N  
**Longitude:** 75.66677° W

**LOCATION INFORMATION**

**Distance Zone Represented in View:** Middle ground  
**Viewer Distance\*:** 1.0 mile  
**Landscape Similarity Zone:** Agricultural/Rural Residential  
**Viewer/User Group(s):** Local Residents  
**Visually Sensitive Resource(s):** Erie Canalway National Heritage Corridor

**PHOTOGRAPH INFORMATION**

**Date:** August 31, 2023  
**Time:** 10:43 AM  
**Camera:** Canon EOS 5D Mark IV  
**Resolution:** 24 Megapixels  
**Lens Focal Length (35mm equivalent):** 50 mm  
**Camera Elevation:** 1,306 feet  
**Field of View:** 39 degrees  
**Direction of View:** West  
**Printed Size:** 10" x 15"  
**Viewing Distance\*\*:** 21"

**NOTES**

\*Distance as measured from the viewpoint to the closest wind turbine generator within the simulated photograph's field of view

\*\*The simulation is at the correct perspective when printed on an 11 inch by 17 inch sheet at full scale, and viewed approximately 21 inches from the eye of the viewer.

**Hoffman Falls Wind Project**  
Towns of Eaton, Fenner, Nelson, and Smithfield, Madison County, New York

Visual Impact Assessment Addendum  
Appendix 8-A



Viewpoint Sensitivity<sup>1</sup>:

Scenic Quality:

- ☐ Low
- ☒ Moderate
- ☒ High

Viewer Exposure

Frequency:

- ☒ Rare
- ☐ Occasional
- ☒ Regular/Repeated

Duration of View:

- ☒ Short/Brief/Fleeting
- ☒ Moderate
- ☒ Long

<sup>1</sup>Viewpoint Sensitivity information is gathered from rating panel results. Scenic Quality is an average based on Low = 1, Moderate = 2, High = 3. Viewer Exposure reflects all those selected by the review panel.

Contrast Rating Scores<sup>2</sup>:

Component	Score	Contrast Rating
	Install	
Landform	2.5	Moderate/Appreciable
Vegetation	2.3	Moderate/Appreciable
Land Use	2.0	Moderate
Water	N/A	N/A
Sky	2.8	Appreciable
Viewer Activity	2.2	Moderate
AVERAGE	2.4	Moderate/Appreciable

<sup>2</sup> Contrast Rating Scale: 0.0 - 0.2 (Insignificant), 0.3 - 0.7 (Insignificant/Minimal), 0.8 - 1.2 (Minimal), 1.3 - 1.7 (Minimal/Moderate), 1.8 - 2.2 (Moderate), 2.3 - 2.7 (Moderate/Appreciable), 2.8 - 3.2 (Appreciable) 3.3 - 3.7 Appreciable/Strong), 3.8 - 4.0 (Strong).

Contrast Rating - Lowest and Highest Scores:

Post - Install		
Component	Score	
	Low	High
Landform	1.5	3.0
Vegetation	1.0	3.0
Land Use	1.5	3.0
Water	NA	NA
Sky	2.0	3.5
Viewer Activity	1.5	2.5

Existing View



Proposed View (Post Installation)



Existing View

Viewpoint 18 is located on Gill Road in the Town of Smithfield, approximately 1.0 mile from the nearest proposed wind turbine that would be visible in the selected photo's field of view. This viewpoint occurs in a portion of the Agricultural/Rural Residential LSZ with relatively level topography and a mix of farms, fields, and woodlots. Typical viewers in this location are local residents. In the selected photo, the existing view to the west features a roadside cornfield that extends from the foreground into the middle ground. The field is backed by a horizontal band of trees that represent the edge of a woodlot. The woodlot descends into a valley, and partially screens a mix of fields and forest on undulating hills that extend to the horizon line in the background. Above the rolling horizon line, the uninterrupted sky is clear and light blue in color. The abundance of trees and rolling hills screen any built features, and the view has a strong rural agricultural character and high scenic quality.

Proposed View

With the proposed Project in place, several wind turbines are now visible along the horizon line. The turbines extend well into the sky and their scale contrast with the existing vegetation and landform is notable. Because they are closer to the viewer, the turbines on the left appear larger and their details are more clearly visible. However, their white color and the late morning sun angle minimizes color contrast with the light blue sky. The turbines are prominent new built features in a predominantly undeveloped landscape. Although they present moderate to appreciable line, form, and scale contrast, the distance of the turbines from the viewer limits the effect of the Project on the scenic quality of this working agricultural landscape.

Hoffman Falls Wind Project

Towns of Eaton, Fenner, Nelson, and Smithfield, Madison County, New York



EXISTING VIEW



*Note: Printed at actual size, the existing view image is 15 inches wide by 10 inches high. At this size and focal length, the existing view image should be viewed from a distance 21 inches from the eye of the viewer.*

0

1 in

2 in

*This scale is designed to insure the simulation images are printed at the intended size.*

VIEWPOINT 18  
Gill Road

**Hoffman Falls Wind Project**  
Towns of Eaton, Fenner, Nelson, and Smithfield, Madison County, New York





PHOTOSIMULATION



*Note: Printed at actual size, the resulting simulation image is 15 inches wide by 10 inches high. At this size and focal length, the simulation should be viewed from a distance 21 inches from the eye of the viewer.*

VIEWPOINT 18  
Gill Road

0 1 in 2 in  
This scale is designed to insure the simulation images are printed at the intended size.

**Hoffman Falls Wind Project**  
Towns of Eaton, Fenner, Nelson, and Smithfield, Madison County, New York





REVISED PHOTOSIMULATION



*Note: Printed at actual size, the resulting simulation image is 15 inches wide by 10 inches high. At this size and focal length, the simulation should be viewed from a distance 21 inches from the eye of the viewer.*

VIEWPOINT 18  
Gill Road

0 1 in 2 in  
This scale is designed to insure the simulation images are printed at the intended size.

**Hoffman Falls Wind Project**  
Towns of Eaton, Fenner, Nelson, and Smithfield, Madison County, New York







*Note: The image above is a panorama photograph taken from Stone Bridge Road in the Town of Nelson panning clockwise from north (left) to southeast (right). The green rectangle represents the extent of the simulated photograph.*

**VIEWPOINT 23**  
Stone Bridge Road

**VIEWPOINT INFORMATION**

**Location:** Stone Bridge Road  
**Town:** Nelson  
**County:** Madison  
**Latitude:** 42.92730° N  
**Longitude:** 75.71330° W

**LOCATION INFORMATION**

**Distance Zone Represented in View:** Middle  
Ground  
**Viewer Distance\*:** 0.8 mile  
**Landscape Similarity Zone:** Agricultural/Rural  
Residential  
**Viewer/User Group(s):** Local Residents  
**Visually Sensitive Resource(s):** None Identified

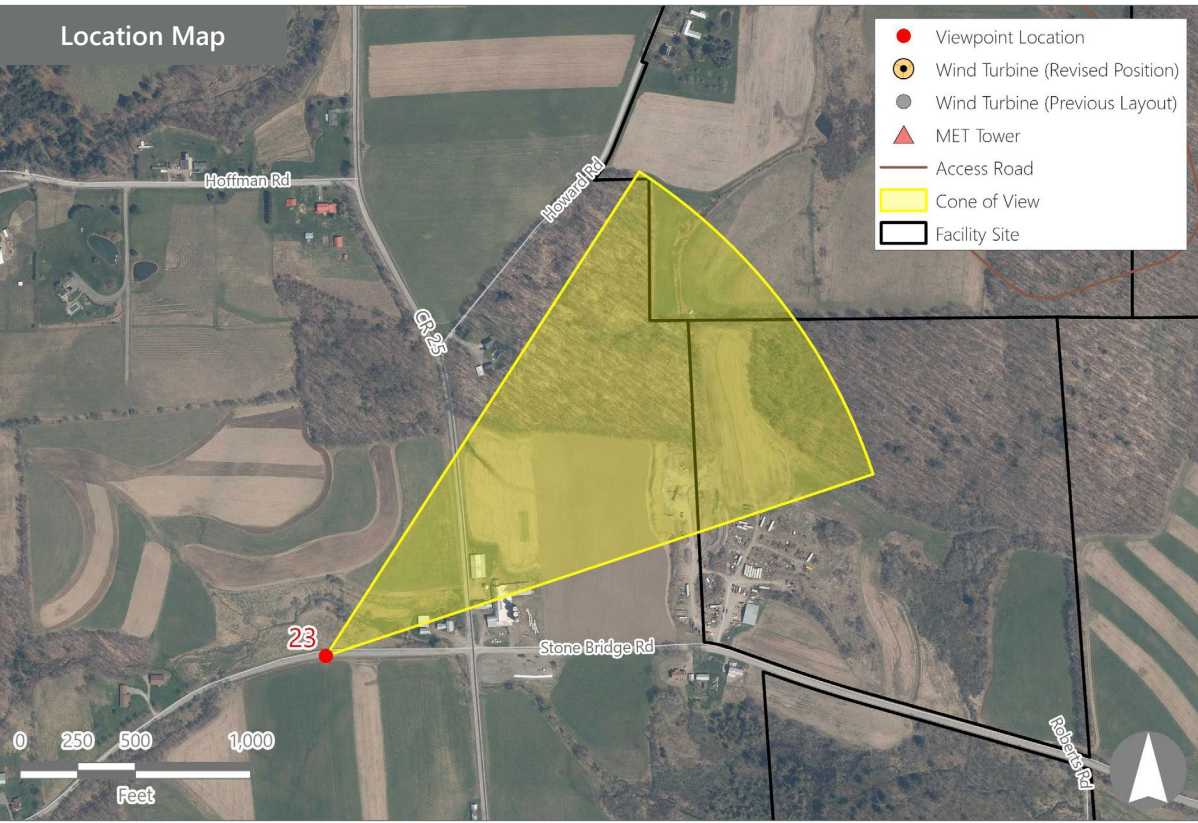
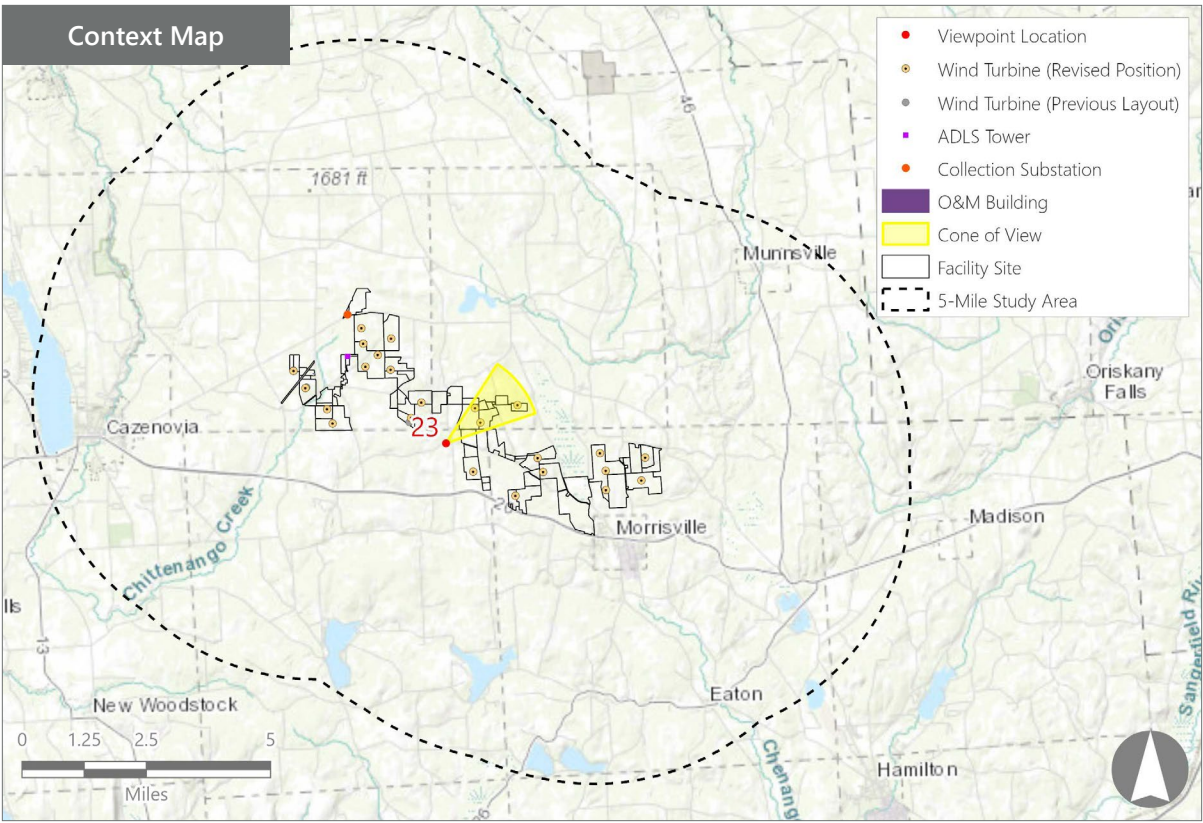
**PHOTOGRAPH INFORMATION**

**Date:** August 31, 2023  
**Time:** 11:25 AM  
**Camera:** Canon EOS 5D Mark IV  
**Resolution:** 24 Megapixels  
**Lens Focal Length (35mm equivalent):** 50 mm  
**Camera Elevation:** 1,505 feet  
**Field of View:** 39 degrees  
**Direction of View:** Northeast  
**Printed Size:** 10" x 15"  
**Viewing Distance\*\*:** 21"

**NOTES**

\*Distance as measured from the viewpoint to the closest wind turbine generator within the simulated photograph's field of view

\*\*The simulation is at the correct perspective when printed on an 11 inch by 17 inch sheet at full scale, and viewed approximately 21 inches from the eye of the viewer.



**Hoffman Falls Wind Project**

Towns of Eaton, Fenner, Nelson, and Smithfield, Madison County, New York

**Visual Impact Assessment Addendum**  
**Appendix 8-A**