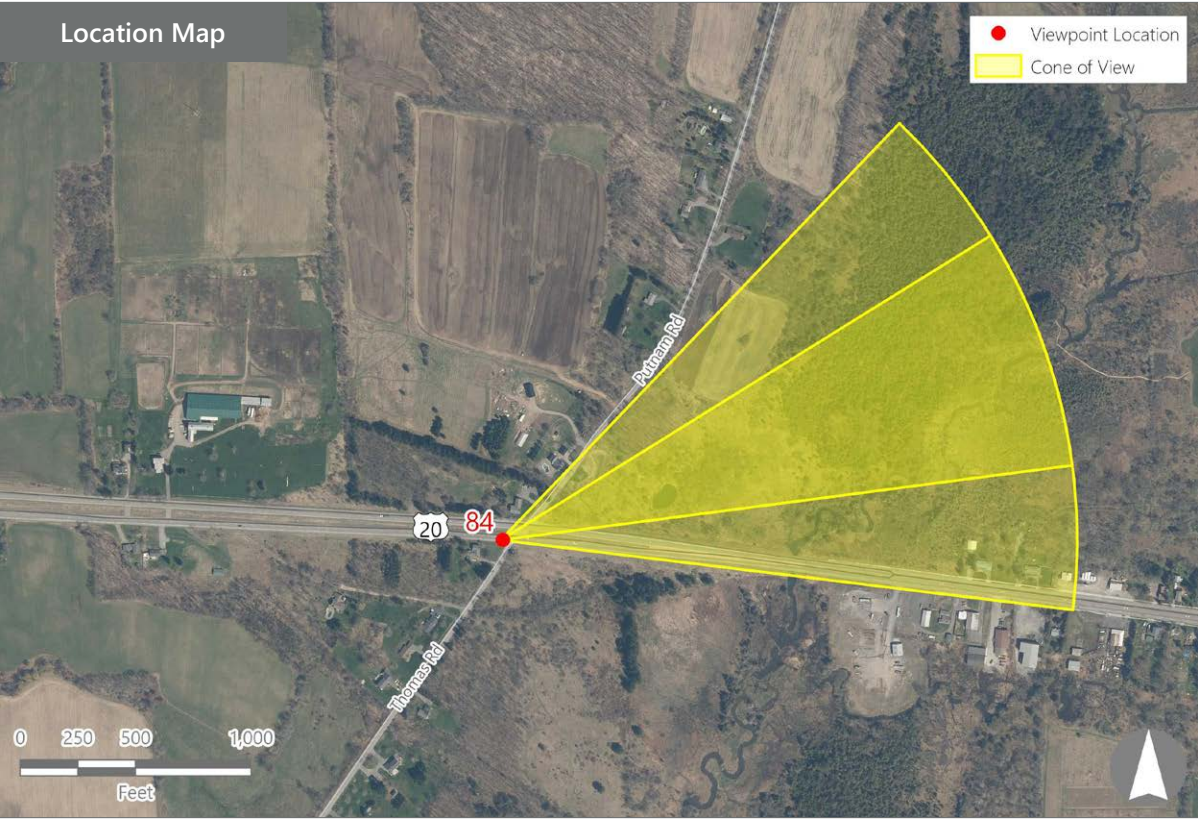
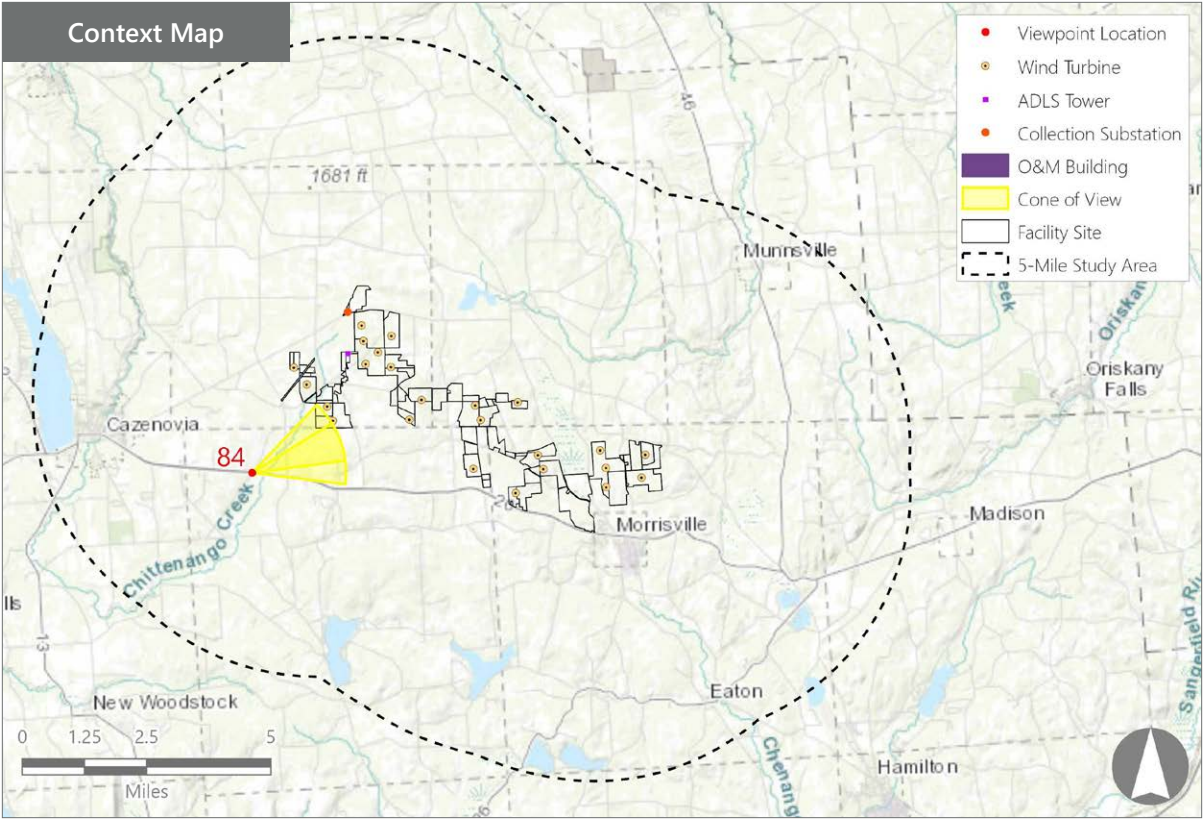


Attachment D1
Supplemental Photosimulations



Note: The image above is a panorama photograph taken from US Route 20 and Putnam Road in the Town of Nelson panning clockwise from north (left) to southeast (right). The green rectangle represents the extent of the simulated photograph.



VIEWPOINT 84

US Route 20 & Putnam Road

VIEWPOINT INFORMATION

Location: US Route 20 & Putnam Road

Town: Nelson

County: Madison

Latitude: 42.91844° N

Longitude: 75.79049° W

LOCATION INFORMATION

Distance Zone Represented in View: Middle

Ground

Viewer Distance*: 1.9 miles

Landscape Similarity Zone: Agricultural/Rural

Residential

Viewer/User Group(s): Local Residents, Through-

Travelers, Tourists/Recreational Users

Visually Sensitive Resource(s): Town of Nelson

Scenic Overlay District, Bicentennial Architectural

Trail, Scenic Route 20

PHOTOGRAPH INFORMATION

Date: April 16, 2024

Time: 12:49 PM

Camera: Canon EOS 5D Mark IV

Resolution: 30.4 Megapixels

Lens Focal Length (35mm equivalent): 51 mm

Camera Elevation: 1,505 feet

Field of View: 39 degrees

Direction of View: East-Northeast

Printed Size: 10" x 15"

Viewing Distance:** 21"

NOTES

*Distance as measured from the viewpoint to the closest wind turbine generator within the simulated photograph's field of view.

**The simulation is at the correct perspective when printed on an 11 inch by 17 inch sheet at full scale, and viewed approximately 21 inches from the eye of the viewer.

Viewpoint 84 is approximately 4.5 miles from turbine T-13.

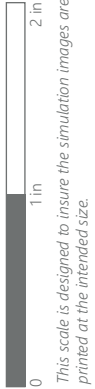
Hoffman Falls Wind Project

Towns of Eaton, Fenner, Nelson, and Smithfield, Madison County, New York

Visual Impact Assessment
Appendix 8-A



Note: Printed at actual size, the existing view image is 15 inches wide by 10 inches high. At this size and focal length, the existing view image should be viewed from a distance 21 inches from the eye of the viewer.

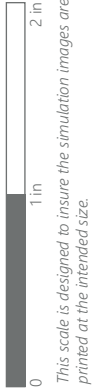


VIEWPOINT 84
US Route 20 & Putnam Road



PHOTOSIMULATION

Note: Printed at actual size, the resulting simulation image is 15 inches wide by 10 inches high. At this size and focal length, the simulation should be viewed from a distance 21 inches from the eye of the viewer.



VIEWPOINT 84
US Route 20 & Putnam Road

Towns of Eaton, Fenner, Nelson, and Smithfield, Madison County, New York

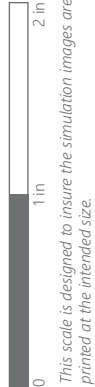
Hoffman Falls Wind Project





EXISTING VIEW

Note: Printed at actual size, the existing view image is 15 inches wide by 10 inches high. At this size and focal length, the existing view image should be viewed from a distance 21 inches from the eye of the viewer.



VIEWPOINT 84
US Route 20 & Putnam Road

Hoffman Falls Wind Project
Towns of Eaton, Fenner, Nelson, and Smithfield, Madison County, New York





PHOTOSIMULATION

Note: Printed at actual size, the resulting simulation image is 15 inches wide by 10 inches high. At this size and focal length, the simulation should be viewed from a distance 21 inches from the eye of the viewer.

0 1 in 2 in
This scale is designed to insure the simulation images are printed at the intended size.

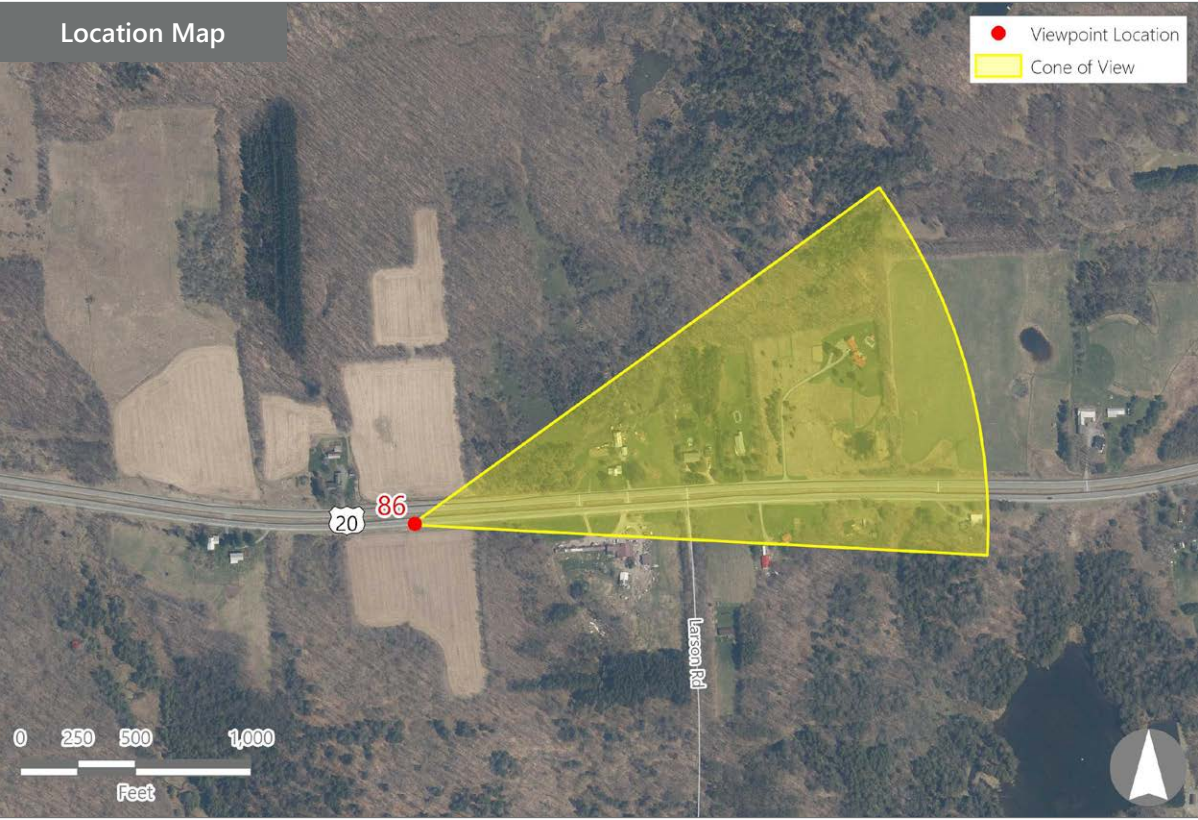
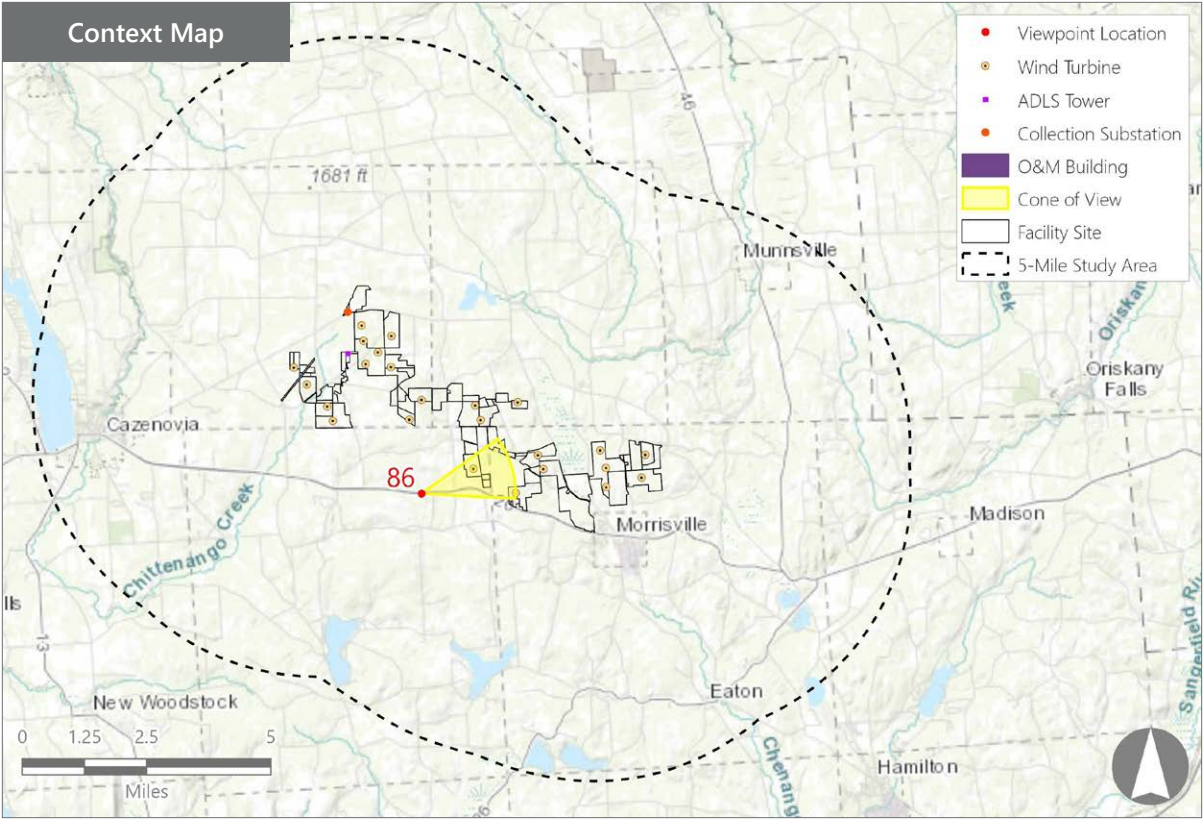
VIEWPOINT 84
US Route 20 & Putnam Road

Hoffman Falls Wind Project
Towns of Eaton, Fenner, Nelson, and Smithfield, Madison County, New York

EDR



Note: The image above is a panorama photograph taken from US route 20 in the Town of Nelson panning clockwise from northwest (left) to southeast (right). The green rectangle represents the extent of the simulated photograph.



Hoffman Falls Wind Project
Towns of Eaton, Fenner, Nelson, and Smithfield, Madison County, New York

Visual Impact Assessment
Appendix 8-A

VIEWPOINT 86
US Route 20

VIEWPOINT INFORMATION

Location: US Route 20
Town: Nelson
County: Madison
Latitude: 42.91189° N
Longitude: 75.72332° W

LOCATION INFORMATION

Distance Zone Represented in View: Middle
Ground
Viewer Distance*: 1.2 miles
Landscape Similarity Zone: Agricultural/Rural

Residential
Viewer/User Group(s): Local Residents, Through-
Travelers, Tourists/Recreational Users
Visually Sensitive Resource(s): Town of Nelson
Scenic Overlay District, Bicentennial Architectural
Trail, Scenic Route 20

PHOTOGRAPH INFORMATION

Date: April 16, 2024
Time: 11:57 AM
Camera: Canon EOS 5D Mark IV
Resolution: 30.4 Megapixels
Lens Focal Length (35mm equivalent): 51 mm
Camera Elevation: 1,672 feet
Field of View: 39 degrees
Direction of View: East-Northeast
Printed Size: 10" x 15"
Viewing Distance:** 21"

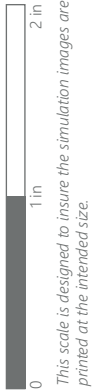
NOTES

*Distance as measured from the viewpoint to the closest wind turbine generator within the simulated photograph's field of view.
**The simulation is at the correct perspective when printed on an 11 inch by 17 inch sheet at full scale, and viewed approximately 21 inches from the eye of the viewer.
Viewpoint 86 is approximately 1.2 miles from turbine T-13.

EXISTING VIEW



Note: Printed at actual size, the existing view image is 15 inches wide by 10 inches high. At this size and focal length, the existing view image should be viewed from a distance 21 inches from the eye of the viewer.



VIEWPOINT 86
US Route 20

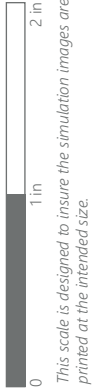
Hoffman Falls Wind Project
Towns of Eaton, Fenner, Nelson, and Smithfield, Madison County, New York



PHOTOSIMULATION



Note: Printed at actual size, the resulting simulation image is 15 inches wide by 10 inches high. At this size and focal length, the simulation should be viewed from a distance 21 inches from the eye of the viewer.



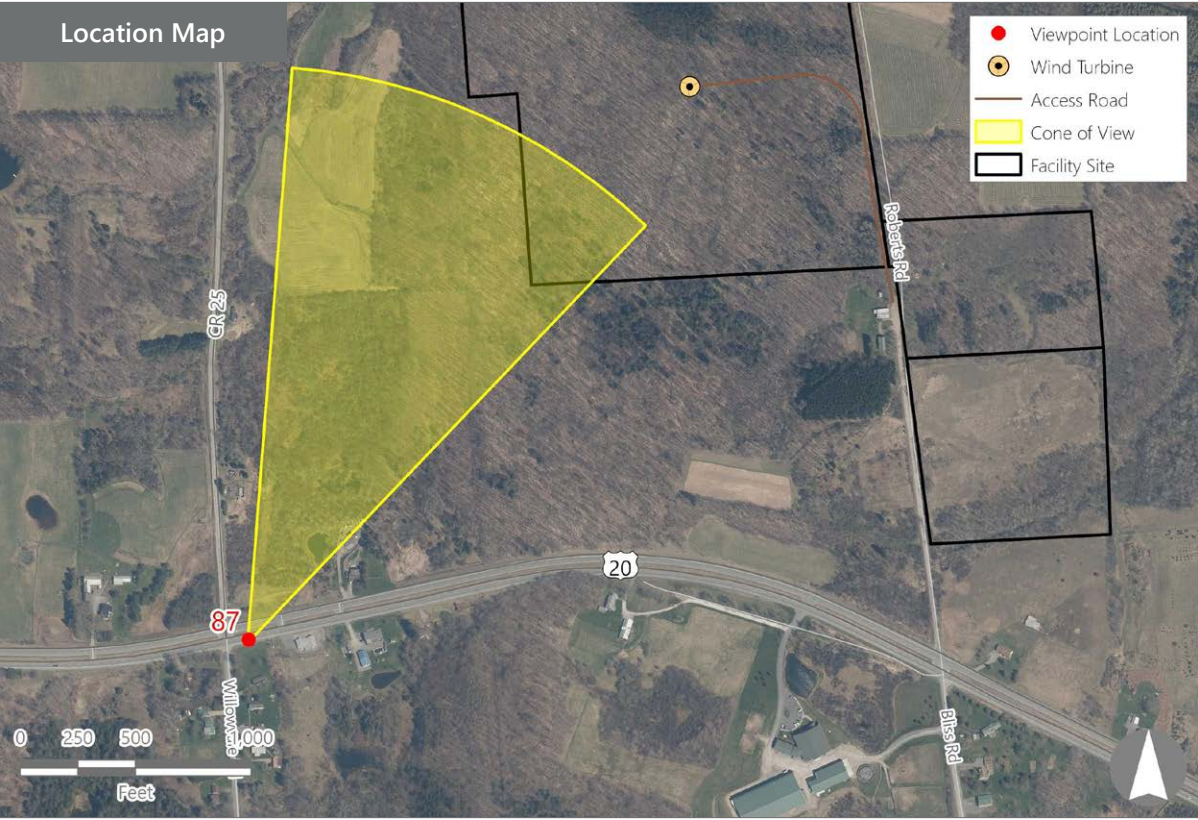
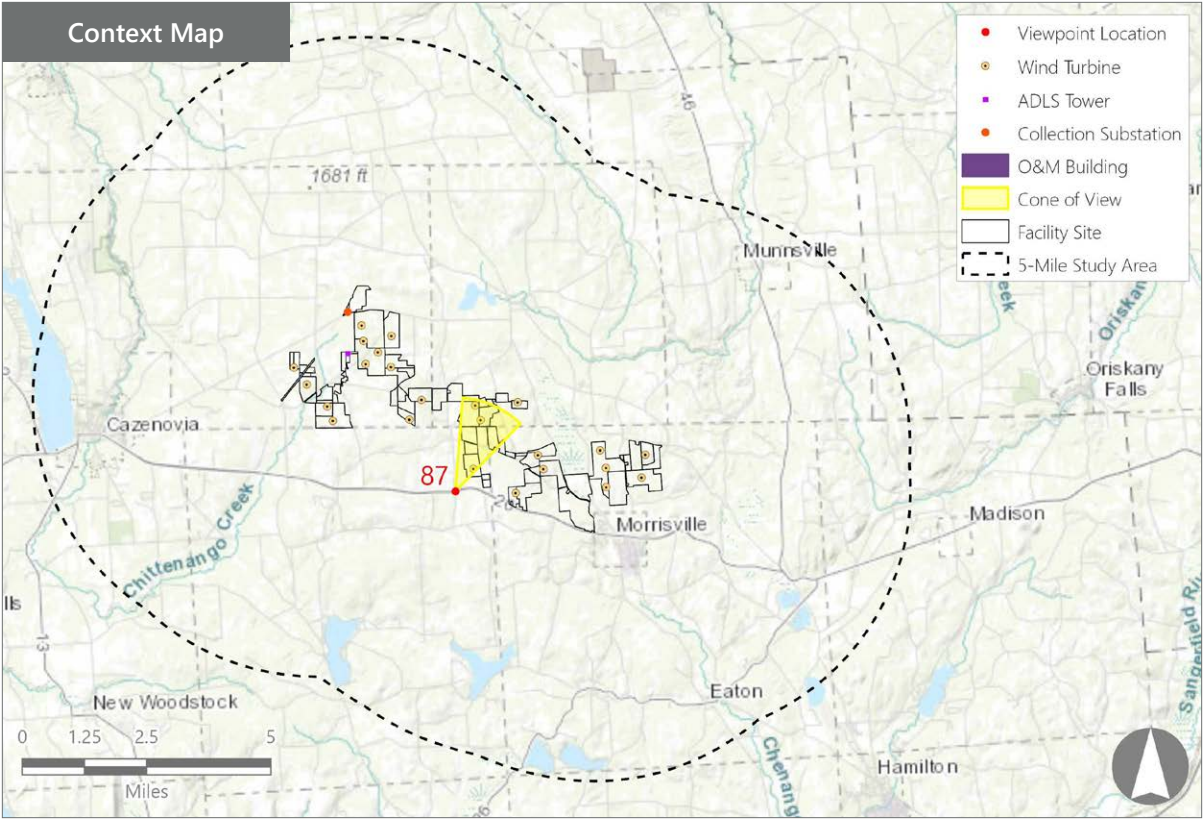
VIEWPOINT 86
US Route 20

Hoffman Falls Wind Project
Towns of Eaton, Fenner, Nelson, and Smithfield, Madison County, New York





Note: The image above is a panorama photograph taken from US Route 20 in the Town of Nelson panning clockwise from north (left) to east (right). The green rectangle represents the extent of the simulated photograph.



Hoffman Falls Wind Project
Towns of Eaton, Fenner, Nelson, and Smithfield, Madison County, New York

Visual Impact Assessment
Appendix 8-A

VIEWPOINT 87
US Route 20

VIEWPOINT INFORMATION

Location: US Route 20
Town: Nelson
County: Madison
Latitude: 42.91241° N
Longitude: 75.70991° W

LOCATION INFORMATION

Distance Zone Represented in View: Middle
Ground
Viewer Distance*: 0.6 miles
Landscape Similarity Zone: Agricultural/Rural
Residential

Viewer/User Group(s): Local Residents, Through-
Travelers, Tourists/Recreational Users
Visually Sensitive Resource(s): Town of Nelson
Scenic Overlay District, Bicentennial Architectural
Trail, Scenic Route 20

PHOTOGRAPH INFORMATION

Date: April 16, 2024
Time: 12:10 PM
Camera: Canon EOS 5D Mark IV
Resolution: 30.4 Megapixels
Lens Focal Length (35mm equivalent): 51 mm
Camera Elevation: 1,571 feet
Field of View: 39 degrees
Direction of View: North-Northeast
Printed Size: 10" x 15"
Viewing Distance:** 21"

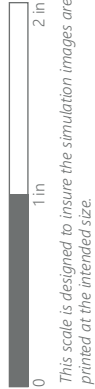
NOTES

*Distance as measured from the viewpoint to the closest wind turbine generator within the simulated photograph's field of view.
**The simulation is at the correct perspective when printed on an 11 inch by 17 inch sheet at full scale, and viewed approximately 21 inches from the eye of the viewer.
Viewpoint 87 is approximately 0.6 miles from turbine T-13.



Note: Printed at actual size, the existing view image is 15 inches wide by 10 inches high. At this size and focal length, the existing view image should be viewed from a distance 21 inches from the eye of the viewer.

EXISTING VIEW



VIEWPOINT 87
US Route 20

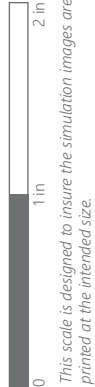
Hoffman Falls Wind Project
Towns of Eaton, Fenner, Nelson, and Smithfield, Madison County, New York





PHOTOSIMULATION

Note: Printed at actual size, the resulting simulation image is 15 inches wide by 10 inches high. At this size and focal length, the simulation should be viewed from a distance 21 inches from the eye of the viewer.



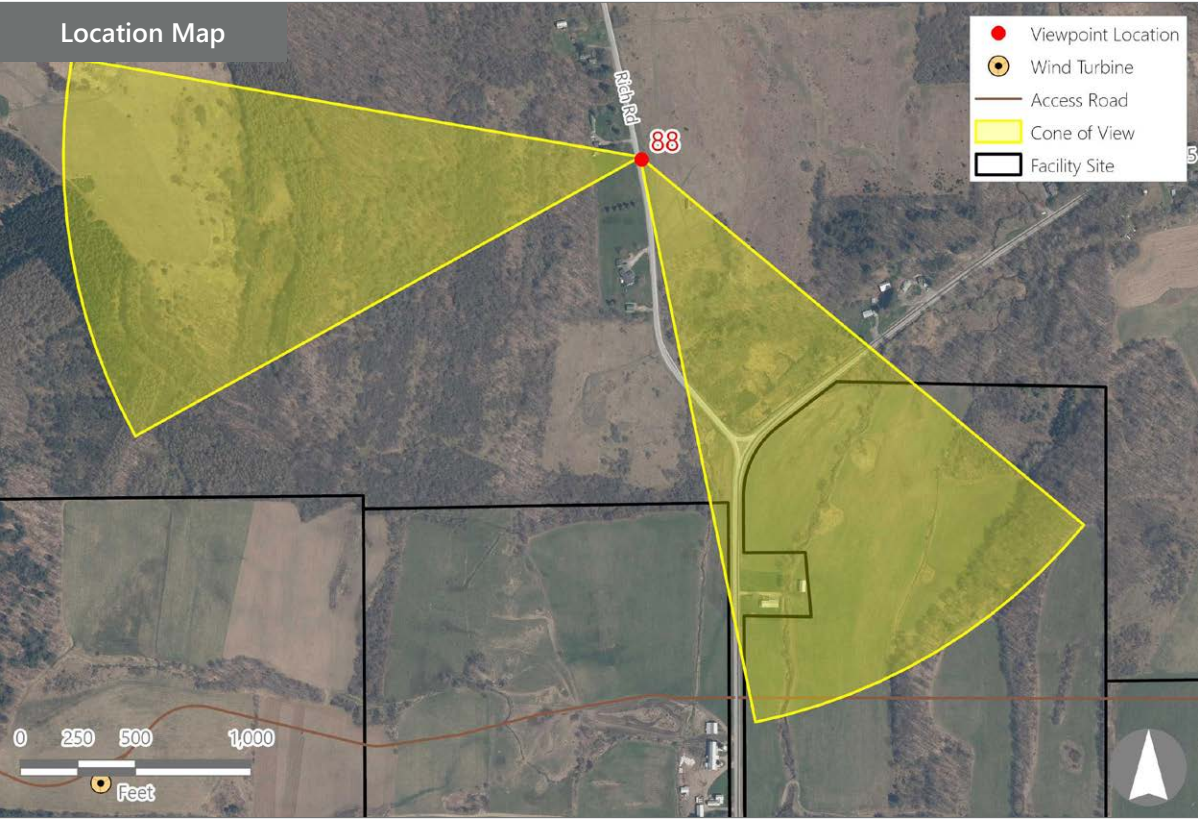
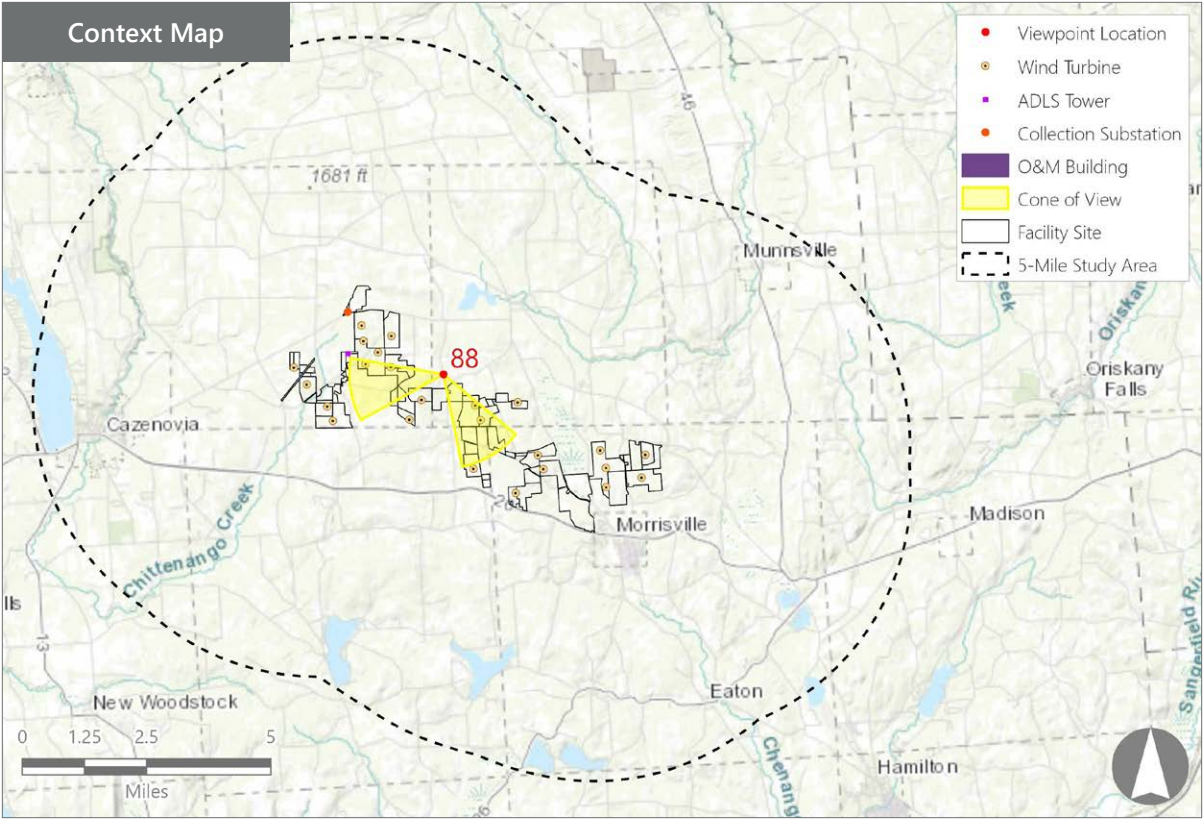
VIEWPOINT 87
US Route 20

Hoffman Falls Wind Project
Towns of Eaton, Fenner, Nelson, and Smithfield, Madison County, New York





Note: The image above is a panorama photograph taken from Rich Road in the Town of Smithfield panning clockwise from southeast (left) to west (right). The green rectangle represents the extent of the simulated photograph.



VIEWPOINT 88

Rich Road

VIEWPOINT INFORMATION

Location: Rich Road

Town: Smithfield

County: Madison

Latitude: 42.94655° N

Longitude: 75.71416° W

LOCATION INFORMATION

Distance Zone Represented in View: Middle

Ground

Viewer Distance*: 0.9 mile, 1.0 mile (wireframe)

Landscape Similarity Zone: Agricultural/Rural

Residential

Viewer/User Group(s): Local Residents, Tourists/

Recreational Users

Visually Sensitive Resource(s): Land indicated

to be under the ownership of the Oneida Indian

Nation, Moonlight Riders Snowmobile Trail, Erie

Canalway National Heritage Corridor

PHOTOGRAPH INFORMATION

Date: April 16, 2024

Time: 12:34 PM

Camera: Canon EOS 5D Mark IV

Resolution: 30.4 Megapixels

Lens Focal Length (35mm equivalent): 51 mm

Camera Elevation: 1,422 feet

Field of View: 39 degrees

Direction of View: South-Southeast,

West (wireframe)

Printed Size: 10" x 15"

Viewing Distance:** 21"

NOTES

*Distance as measured from the viewpoint to the closest wind turbine generator within the simulated photograph's field of view

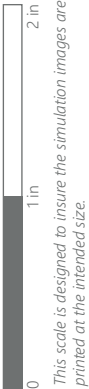
**The simulation is at the correct perspective when printed on an 11 inch by 17 inch sheet at full scale, and viewed approximately 21 inches from the eye of the viewer.

Hoffman Falls Wind Project

Towns of Eaton, Fenner, Nelson, and Smithfield, Madison County, New York

Visual Impact Assessment
Appendix 8-A

EXISTING VIEW



VIEWPOINT 88
Rich Road

Hoffman Falls Wind Project
Towns of Eaton, Fenner, Nelson, and Smithfield, Madison County, New York

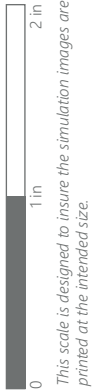


Note: Printed at actual size, the existing view image is 15 inches wide by 10 inches high. At this size and focal length, the existing view image should be viewed from a distance 21 inches from the eye of the viewer.

PHOTOSIMULATION



Note: Printed at actual size, the resulting simulation image is 15 inches wide by 10 inches high. At this size and focal length, the simulation should be viewed from a distance 21 inches from the eye of the viewer.



VIEWPOINT 88
Rich Road

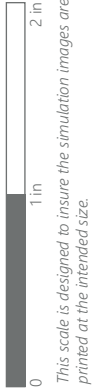
Hoffman Falls Wind Project
Towns of Eaton, Fenner, Nelson, and Smithfield, Madison County, New York





EXISTING VIEW

Note: Printed at actual size, the existing view image is 15 inches wide by 10 inches high. At this size and focal length, the existing view image should be viewed from a distance 21 inches from the eye of the viewer.



VIEWPOINT 88
Rich Road

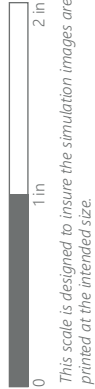
Hoffman Falls Wind Project
Towns of Eaton, Fenner, Nelson, and Smithfield, Madison County, New York





WIREFRAME RENDERING

Note: Printed at actual size, the resulting simulation image is 15 inches wide by 10 inches high. At this size and focal length, the simulation should be viewed from a distance 21 inches from the eye of the viewer.



VIEWPOINT 88
Rich Road

Hoffman Falls Wind Project
Towns of Eaton, Fenner, Nelson, and Smithfield, Madison County, New York

