

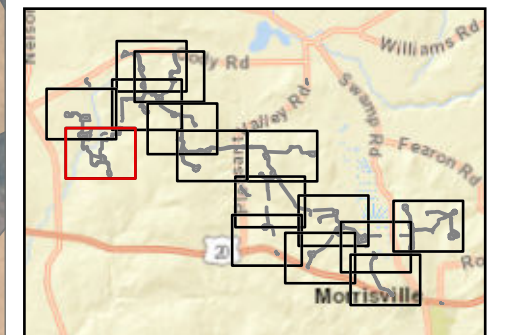
Hoffman Falls Wind

Towns of Eaton, Fenner, Nelson and Smithfield, Madison County, New York

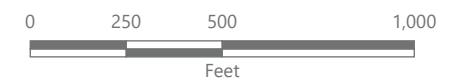
Section 94-c Second Supplement Matter No. 23-00038

- Active Agricultural Land
- Temporary Impacts During Operation*
- Temporary Impacts During Construction**
- Mineral Soil Group
 - Group 2
 - Group 3
 - Group 4
- Facility Components
 - Wind Turbine
 - Limit of Grading
 - Limit of Impervious Surface
 - Limit of Disturbance
 - Facility Site

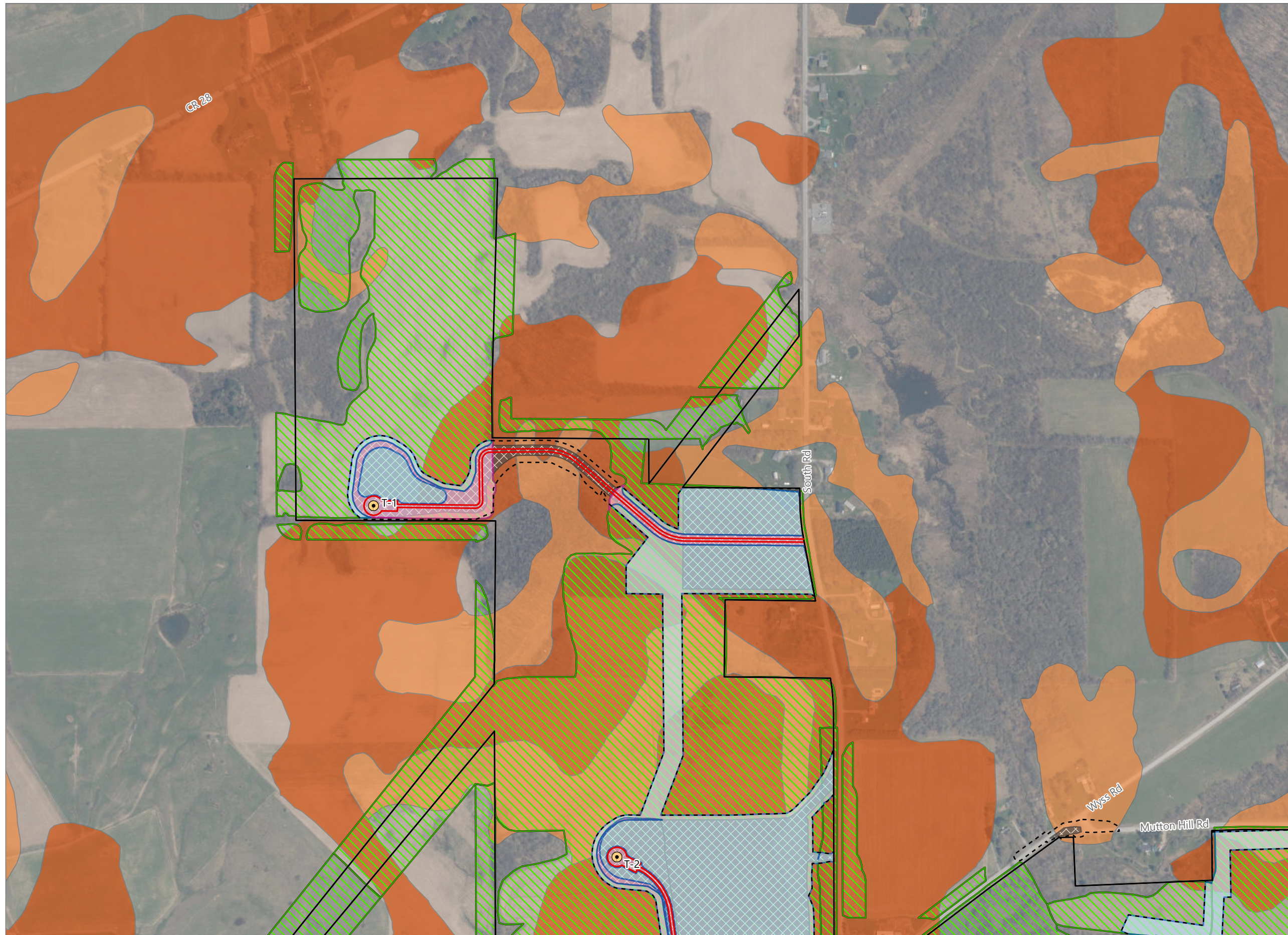
Note:
 *Areas impacted by the Facility that will be temporarily taken out of agricultural production during construction and operations.
 **Areas impacted by the Facility that will be temporarily taken out of agricultural production until the end of the construction period, at which point they will be restored and returned to agricultural use.



Sheet 1 of 15



Prepared September 10, 2024
 Basemap: NYS DOP "2022" orthoimagery map service



Hoffman Falls Wind

Towns of Eaton, Fenner, Nelson and Smithfield, Madison County, New York

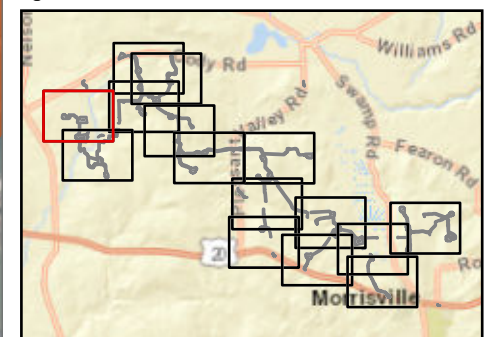
Section 94-c Second Supplement Matter No. 23-00038

- Active Agricultural Land
- Temporary Impacts During Operation*
- Temporary Impacts During Construction**
- Mineral Soil Group
 - Group 2
 - Group 3
- Facility Components
 - Wind Turbine
 - Limit of Grading
 - Limit of Impervious Surface
 - Limit of Disturbance
 - Facility Site

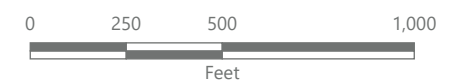
Note:

*Areas impacted by the Facility that will be temporarily taken out of agricultural production during construction and operations.

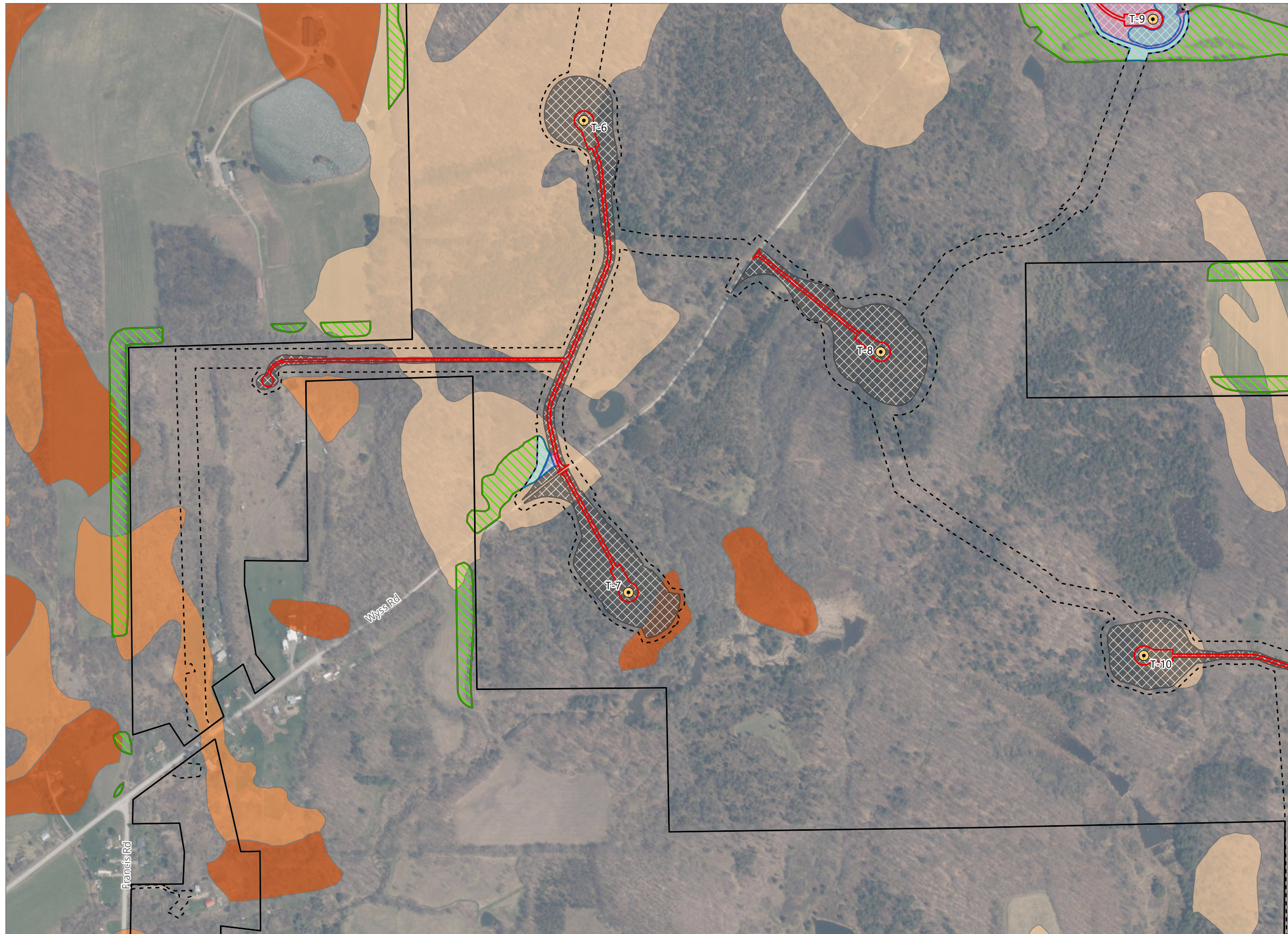
**Areas impacted by the Facility that will be temporarily taken out of agricultural production until the end of the construction period, at which point they will be restored and returned to agricultural use.



Sheet 2 of 15



Prepared September 10, 2024
 Basemap: NYS DOP "2022" orthoimagery map service



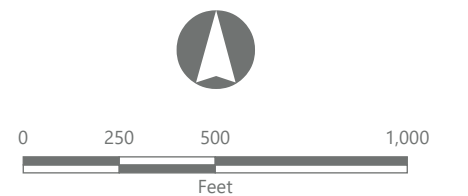
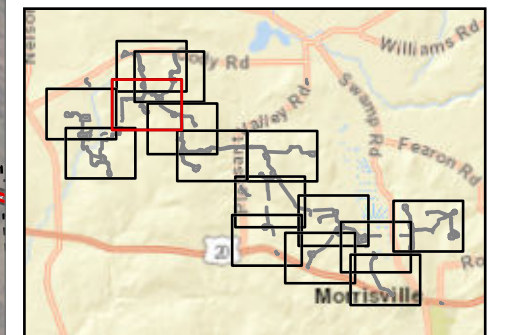
Hoffman Falls Wind

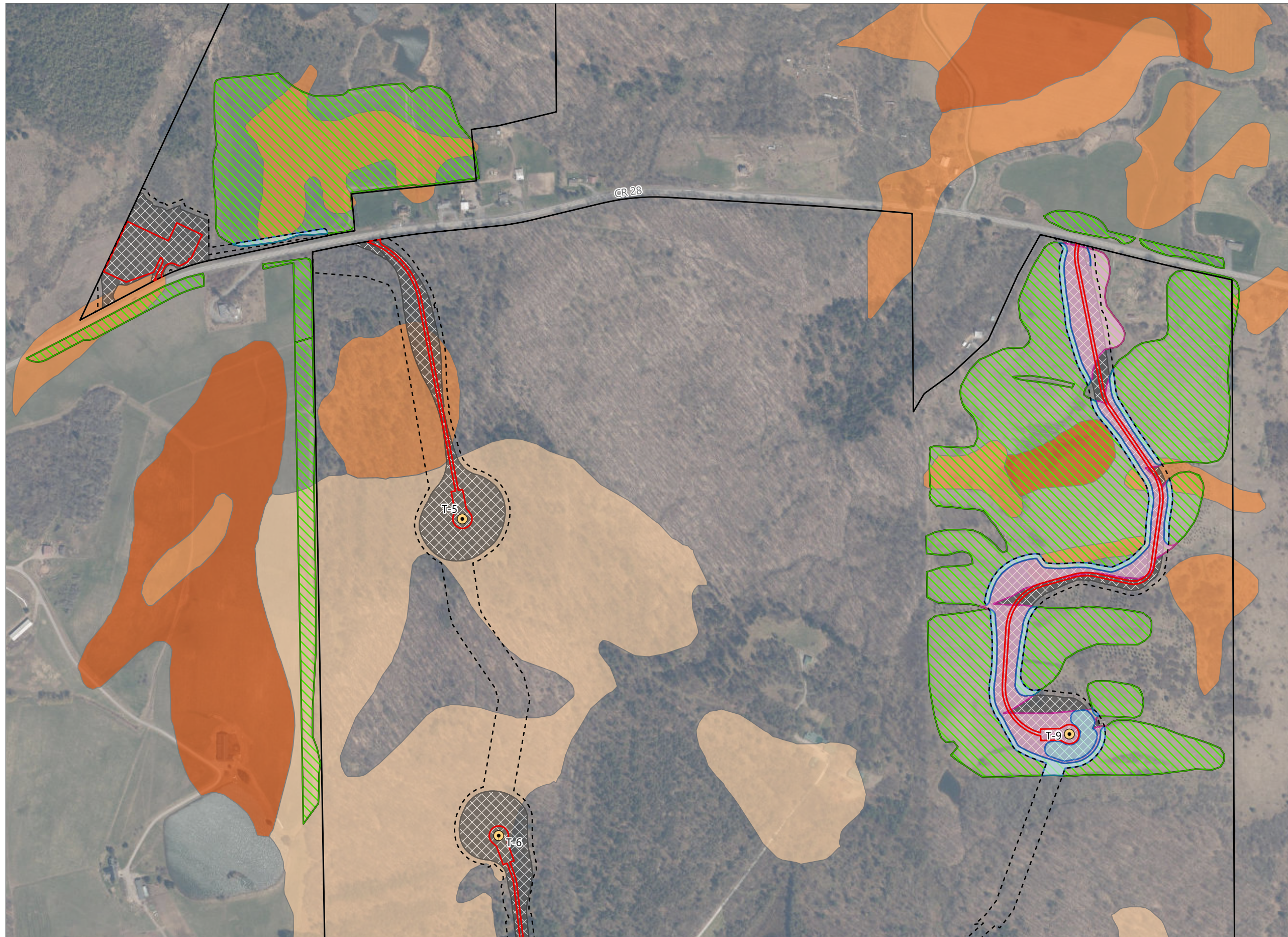
Towns of Eaton, Fenner, Nelson and Smithfield, Madison County, New York

Section 94-c Second Supplement Matter No. 23-00038

- Active Agricultural Land
- Temporary Impacts During Operation*
- Temporary Impacts During Construction**
- Mineral Soil Group
 - Group 2
 - Group 3
 - Group 4
- Facility Components
 - Wind Turbine
 - Limit of Grading
 - Limit of Impervious Surface
 - Limit of Disturbance
 - Facility Site

Note:
 *Areas impacted by the Facility that will be temporarily taken out of agricultural production during construction and operations.
 **Areas impacted by the Facility that will be temporarily taken out of agricultural production until the end of the construction period, at which point they will be restored and returned to agricultural use.





Hoffman Falls Wind

Towns of Eaton, Fenner, Nelson and Smithfield, Madison County, New York

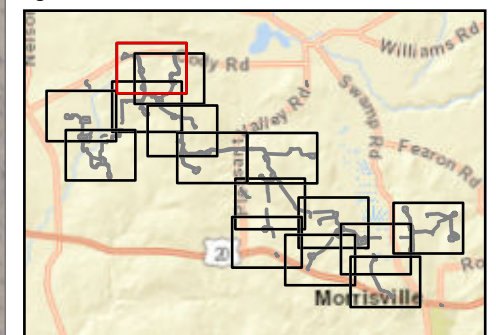
Section 94-c Second Supplement Matter No. 23-00038

- Active Agricultural Land
- Temporary Impacts During Operation*
- Temporary Impacts During Construction**
- Mineral Soil Group
 - Group 2
 - Group 3
 - Group 4
- Facility Components
 - Wind Turbine
 - Limit of Grading
 - Limit of Impervious Surface
 - Limit of Disturbance
 - Facility Site

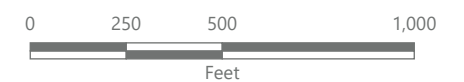
Note:

*Areas impacted by the Facility that will be temporarily taken out of agricultural production during construction and operations.

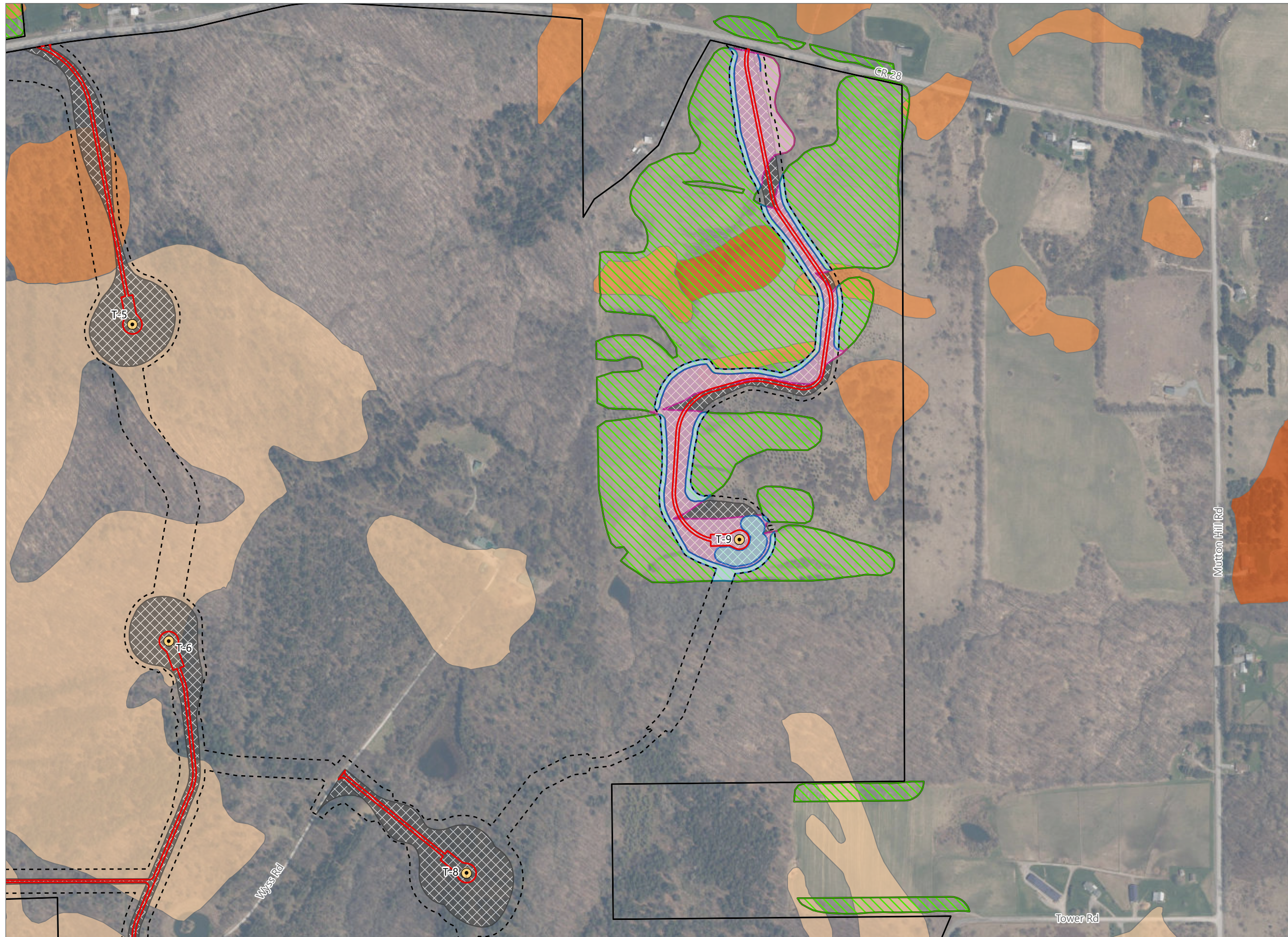
**Areas impacted by the Facility that will be temporarily taken out of agricultural production until the end of the construction period, at which point they will be restored and returned to agricultural use.



Sheet 4 of 15



Prepared September 10, 2024
 Basemap: NYS DOP "2022" orthoimagery map service



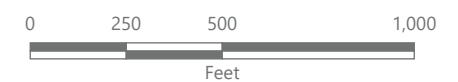
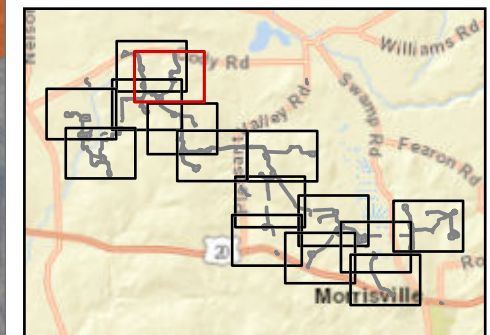
Hoffman Falls Wind

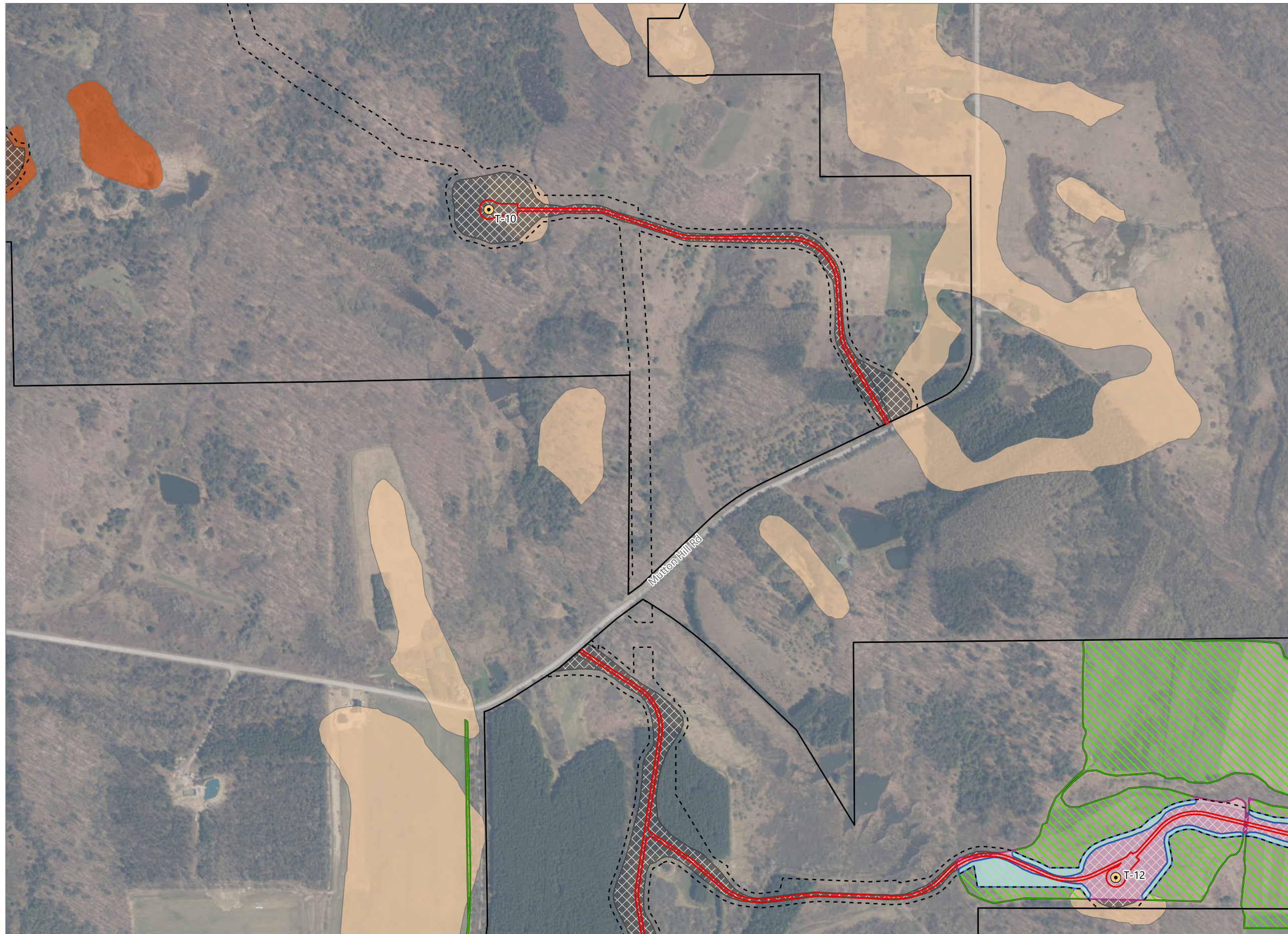
Towns of Eaton, Fenner, Nelson and Smithfield, Madison County, New York

Section 94-c Second Supplement Matter No. 23-00038

- Active Agricultural Land
- Temporary Impacts During Operation*
- Temporary Impacts During Construction**
- Mineral Soil Group
 - Group 2
 - Group 3
 - Group 4
- Facility Components
 - Wind Turbine
 - Limit of Grading
 - Limit of Impervious Surface
 - Limit of Disturbance
 - Facility Site

Note:
 *Areas impacted by the Facility that will be temporarily taken out of agricultural production during construction and operations.
 **Areas impacted by the Facility that will be temporarily taken out of agricultural production until the end of the construction period, at which point they will be restored and returned to agricultural use.





Hoffman Falls Wind

Towns of Eaton, Fenner, Nelson and Smithfield, Madison County, New York

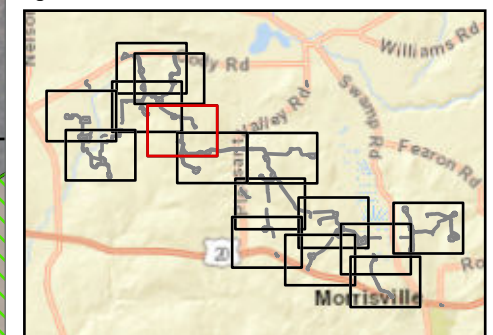
Section 94-c Second Supplement Matter No. 23-00038

- Active Agricultural Land
- Temporary Impacts During Operation*
- Temporary Impacts During Construction**
- Mineral Soil Group
 - Group 2
 - Group 4
- Facility Components
 - Wind Turbine
 - Limit of Grading
 - Limit of Impervious Surface
 - Limit of Disturbance
 - Facility Site

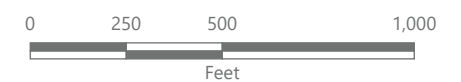
Note:

*Areas impacted by the Facility that will be temporarily taken out of agricultural production during construction and operations.

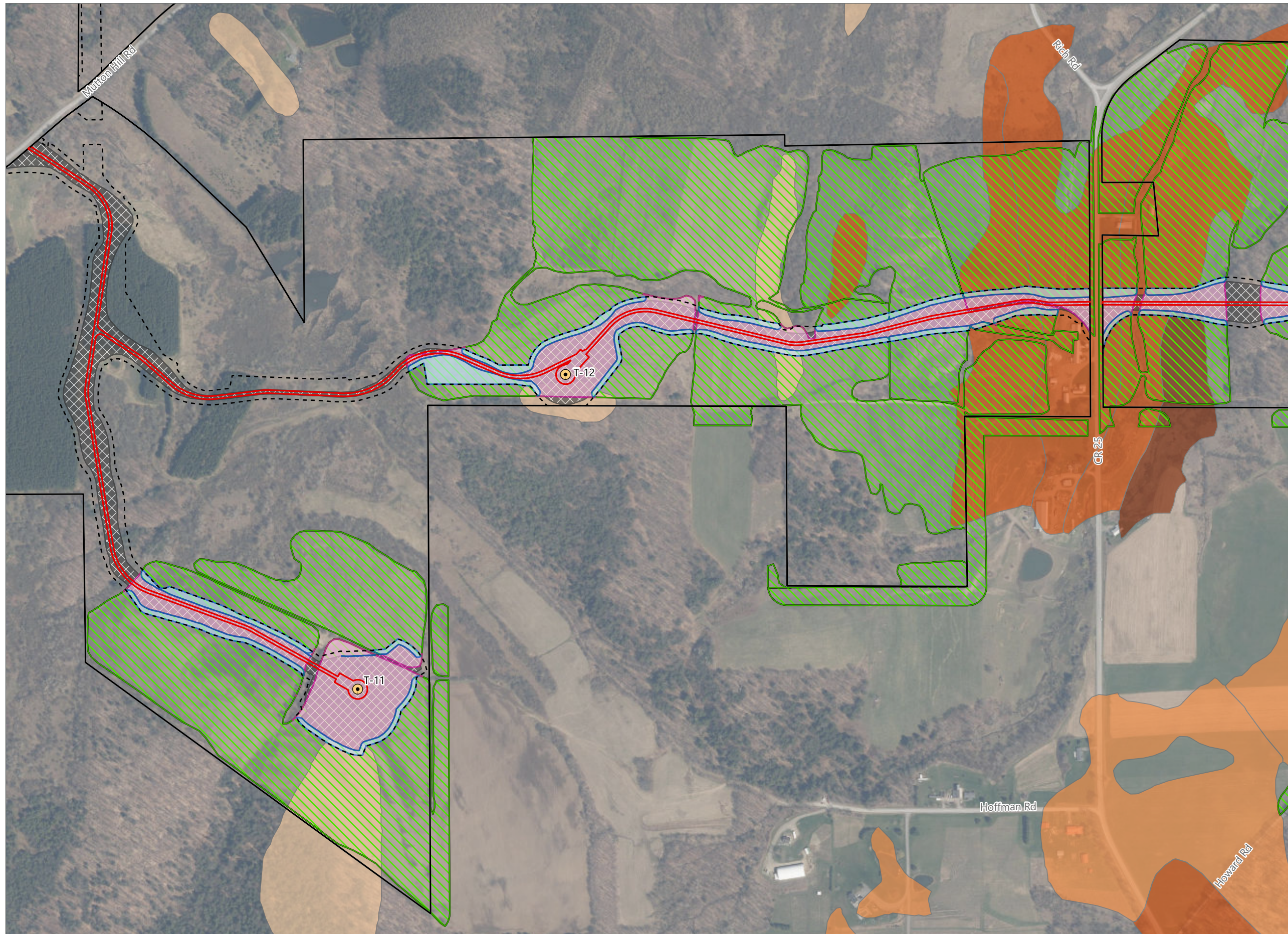
**Areas impacted by the Facility that will be temporarily taken out of agricultural production until the end of the construction period, at which point they will be restored and returned to agricultural use.



Sheet 6 of 15



Prepared September 10, 2024
 Basemap: NYS DOP "2022" orthoimagery map service



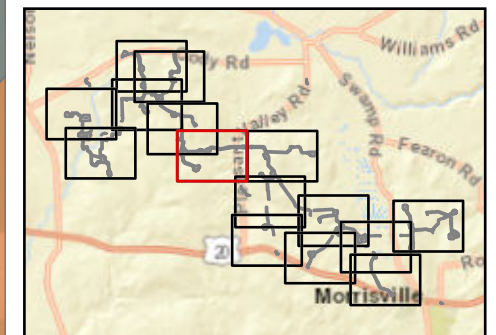
Hoffman Falls Wind

Towns of Eaton, Fenner, Nelson and Smithfield, Madison County, New York

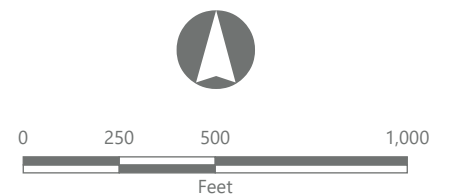
Section 94-c Second Supplement Matter No. 23-00038

- Active Agricultural Land
- Temporary Impacts During Operation*
- Temporary Impacts During Construction**
- Mineral Soil Group
 - Group 1
 - Group 2
 - Group 3
 - Group 4
- Facility Components
 - Wind Turbine
 - Limit of Grading
 - Limit of Impervious Surface
 - Limit of Disturbance
 - Facility Site

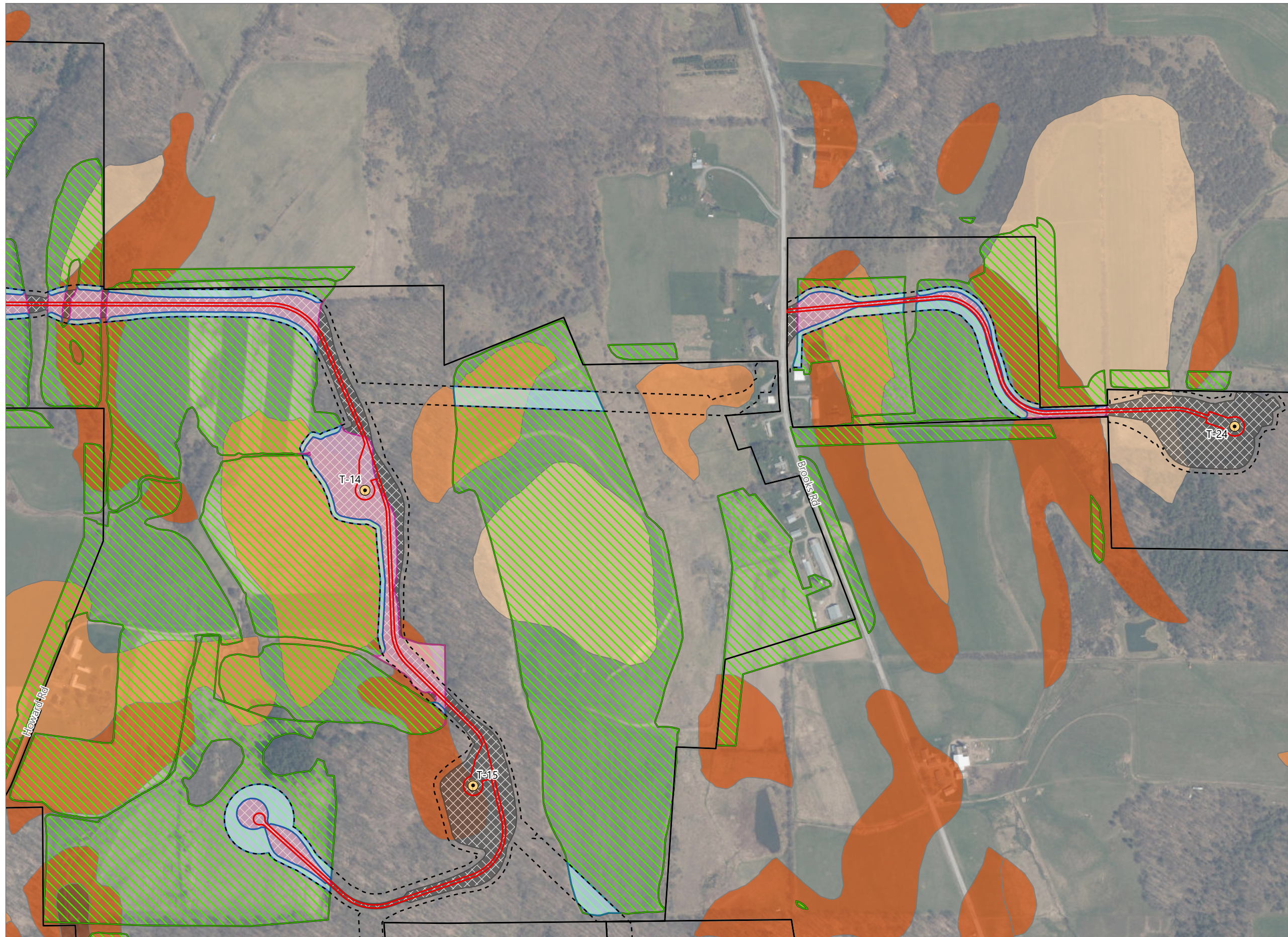
Note:
 *Areas impacted by the Facility that will be temporarily taken out of agricultural production during construction and operations.
 **Areas impacted by the Facility that will be temporarily taken out of agricultural production until the end of the construction period, at which point they will be restored and returned to agricultural use.



Sheet 7 of 15



Prepared September 10, 2024
 Basemap: NYS DOP "2022" orthoimagery map service



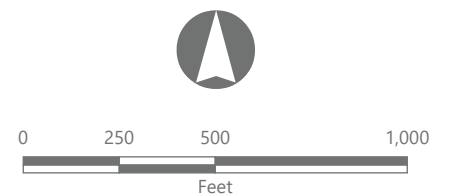
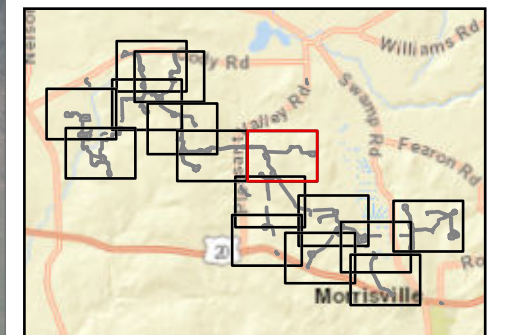
Hoffman Falls Wind

Towns of Eaton, Fenner, Nelson and Smithfield, Madison County, New York

Section 94-c Second Supplement Matter No. 23-00038

- ▨ Active Agricultural Land
- ▨ Temporary Impacts During Operation*
- ▨ Temporary Impacts During Construction**
- Mineral Soil Group
 - Group 1
 - Group 2
 - Group 3
 - Group 4
- Facility Components
 - Wind Turbine
 - Limit of Grading
 - Limit of Impervious Surface
 - Limit of Disturbance
 - Facility Site

Note:
 *Areas impacted by the Facility that will be temporarily taken out of agricultural production during construction and operations.
 **Areas impacted by the Facility that will be temporarily taken out of agricultural production until the end of the construction period, at which point they will be restored and returned to agricultural use.





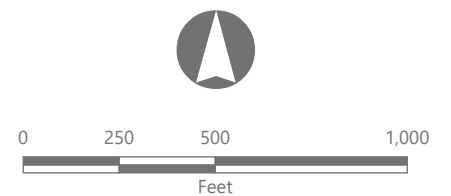
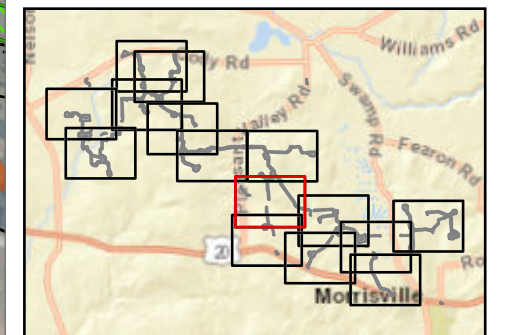
Hoffman Falls Wind

Towns of Eaton, Fenner, Nelson and Smithfield, Madison County, New York

Section 94-c Second Supplement Matter No. 23-00038

- Active Agricultural Land
- Temporary Impacts During Operation*
- Temporary Impacts During Construction**
- Mineral Soil Group
 - Group 1
 - Group 2
 - Group 3
 - Group 4
- Facility Components
 - Wind Turbine
 - Limit of Grading
 - Limit of Impervious Surface
 - Limit of Disturbance
 - Facility Site

Note:
 *Areas impacted by the Facility that will be temporarily taken out of agricultural production during construction and operations.
 **Areas impacted by the Facility that will be temporarily taken out of agricultural production until the end of the construction period, at which point they will be restored and returned to agricultural use.





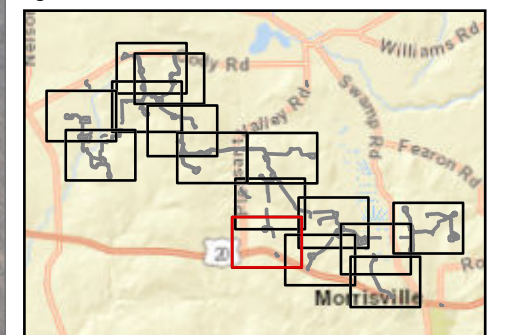
Hoffman Falls Wind

Towns of Eaton, Fenner, Nelson and Smithfield, Madison County, New York

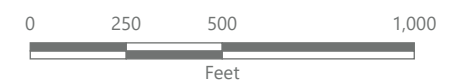
Section 94-c Second Supplement Matter No. 23-00038

- Active Agricultural Land
 - Temporary Impacts During Operation*
 - Temporary Impacts During Construction**
- Mineral Soil Group
- Group 1
 - Group 2
 - Group 3
 - Group 4
- Facility Components
- Wind Turbine
 - Limit of Grading
 - Limit of Impervious Surface
 - Limit of Disturbance
 - Facility Site

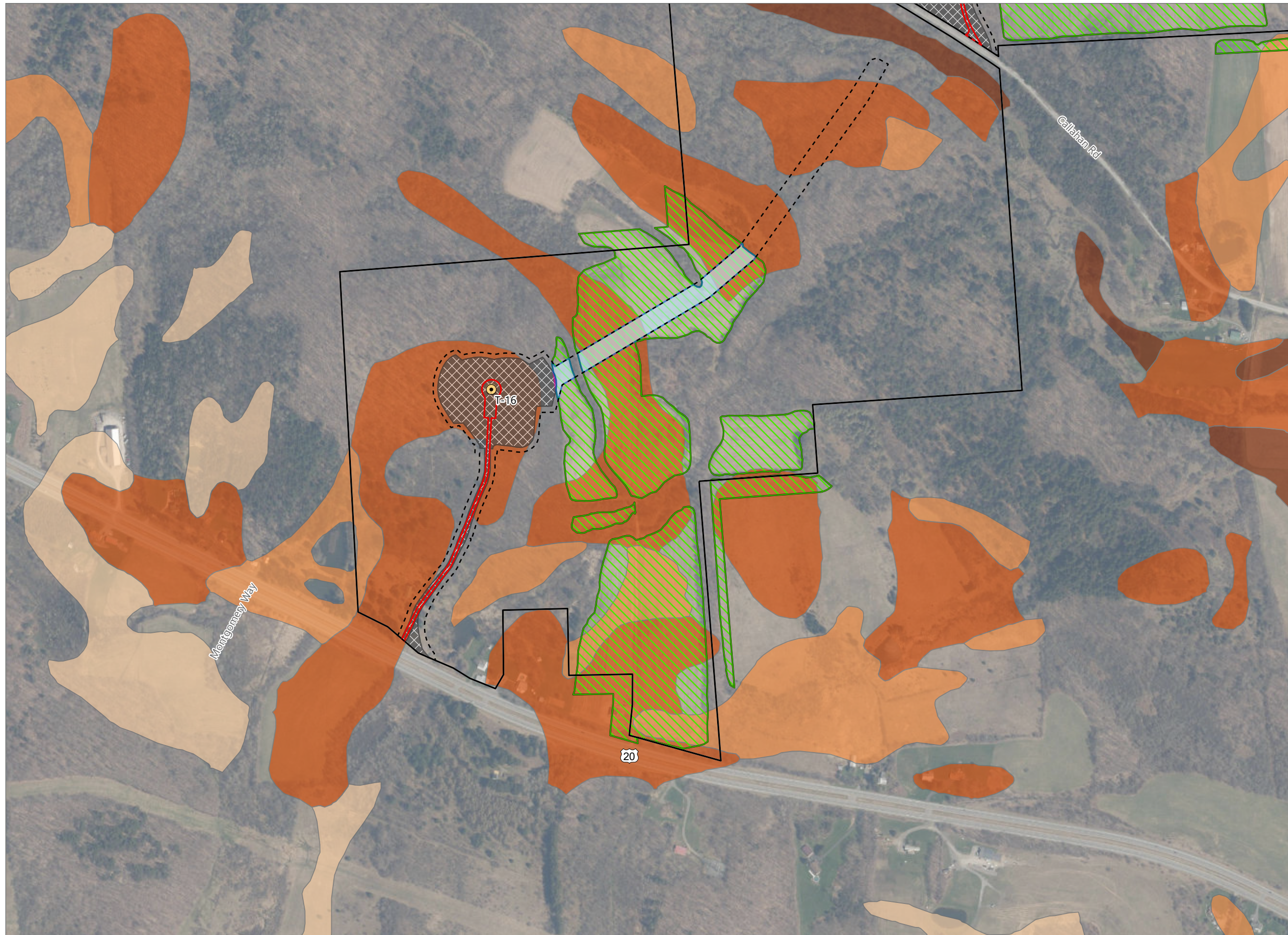
Note:
 *Areas impacted by the Facility that will be temporarily taken out of agricultural production during construction and operations.
 **Areas impacted by the Facility that will be temporarily taken out of agricultural production until the end of the construction period, at which point they will be restored and returned to agricultural use.



Sheet 10 of 15



Prepared September 10, 2024
 Basemap: NYS DOP "2022" orthoimagery map service



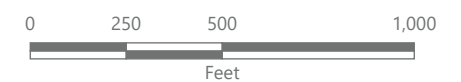
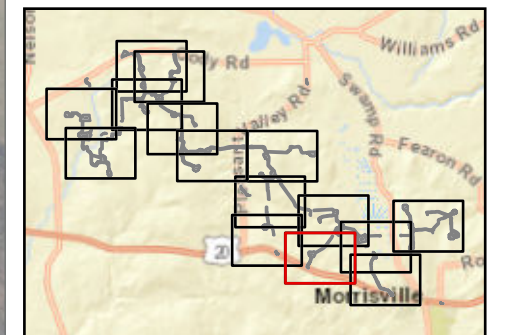
Hoffman Falls Wind

Towns of Eaton, Fenner, Nelson and Smithfield, Madison County, New York

Section 94-c Second Supplement Matter No. 23-00038

- Active Agricultural Land
- Temporary Impacts During Operation*
- Temporary Impacts During Construction**
- Mineral Soil Group
 - Group 1
 - Group 2
 - Group 3
 - Group 4
- Facility Components
 - Wind Turbine
 - Limit of Grading
 - Limit of Impervious Surface
 - Limit of Disturbance
 - Facility Site

Note:
 *Areas impacted by the Facility that will be temporarily taken out of agricultural production during construction and operations.
 **Areas impacted by the Facility that will be temporarily taken out of agricultural production until the end of the construction period, at which point they will be restored and returned to agricultural use.





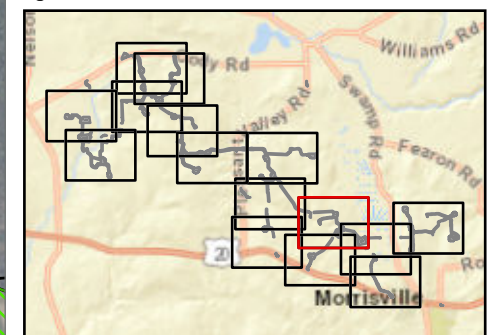
Hoffman Falls Wind

Towns of Eaton, Fenner, Nelson and Smithfield, Madison County, New York

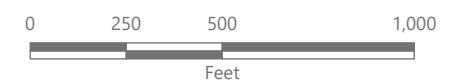
Section 94-c Second Supplement Matter No. 23-00038

- ▨ Active Agricultural Land
- ▨ Temporary Impacts During Operation*
- ▨ Temporary Impacts During Construction**
- Mineral Soil Group
 - Group 1
 - Group 2
 - Group 3
 - Group 4
- Facility Components
 - Wind Turbine
 - Limit of Grading
 - Limit of Impervious Surface
 - Limit of Disturbance
 - Facility Site

Note:
 *Areas impacted by the Facility that will be temporarily taken out of agricultural production during construction and operations.
 **Areas impacted by the Facility that will be temporarily taken out of agricultural production until the end of the construction period, at which point they will be restored and returned to agricultural use.



Sheet 12 of 15



Prepared September 10, 2024
 Basemap: NYS DOP "2022" orthoimagery map service



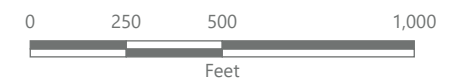
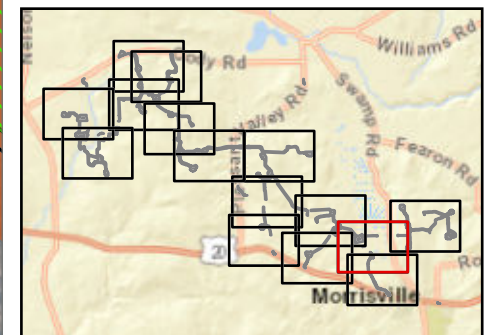
Hoffman Falls Wind

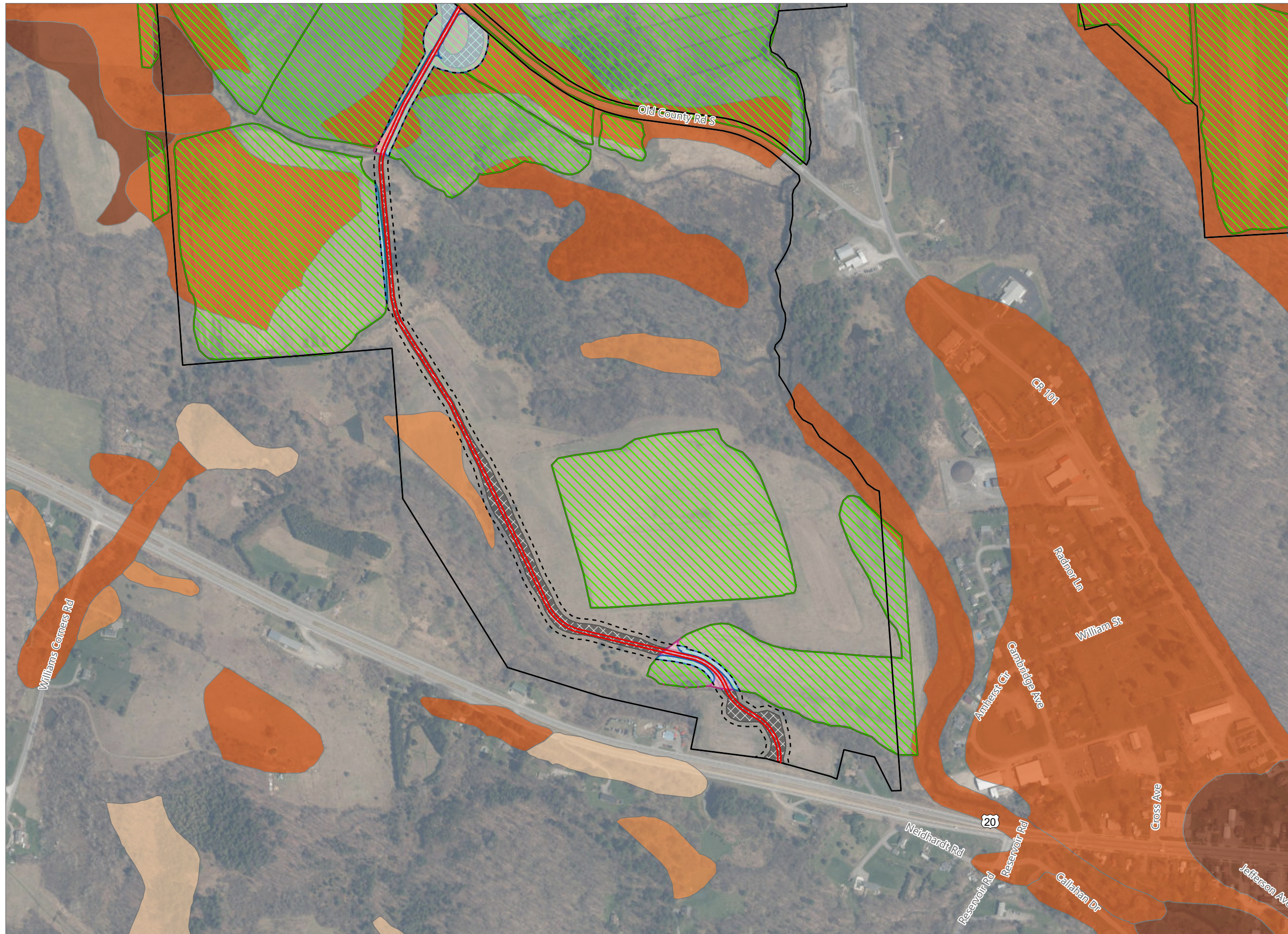
Towns of Eaton, Fenner, Nelson and Smithfield, Madison County, New York

**Section 94-c Second Supplement
Matter No. 23-00038**

- Active Agricultural Land
- Temporary Impacts During Operation*
- Temporary Impacts During Construction**
- Mineral Soil Group
 - Group 1
 - Group 2
 - Group 3
- Facility Components
 - Wind Turbine
 - Limit of Grading
 - Limit of Impervious Surface
 - Limit of Disturbance
 - Facility Site

Note:
 *Areas impacted by the Facility that will be temporarily taken out of agricultural production during construction and operations.
 **Areas impacted by the Facility that will be temporarily taken out of agricultural production until the end of the construction period, at which point they will be restored and returned to agricultural use.





Hoffman Falls Wind

Towns of Eaton, Fenner, Nelson and Smithfield, Madison County, New York

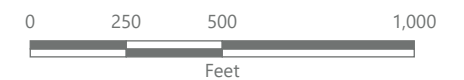
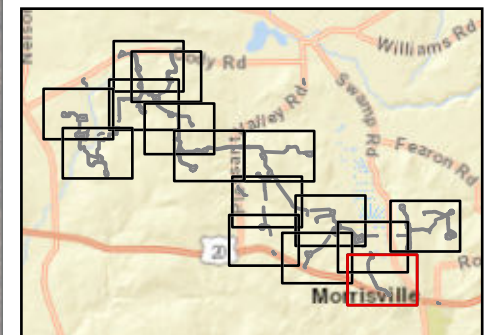
Section 94-c Second Supplement Matter No. 23-00038

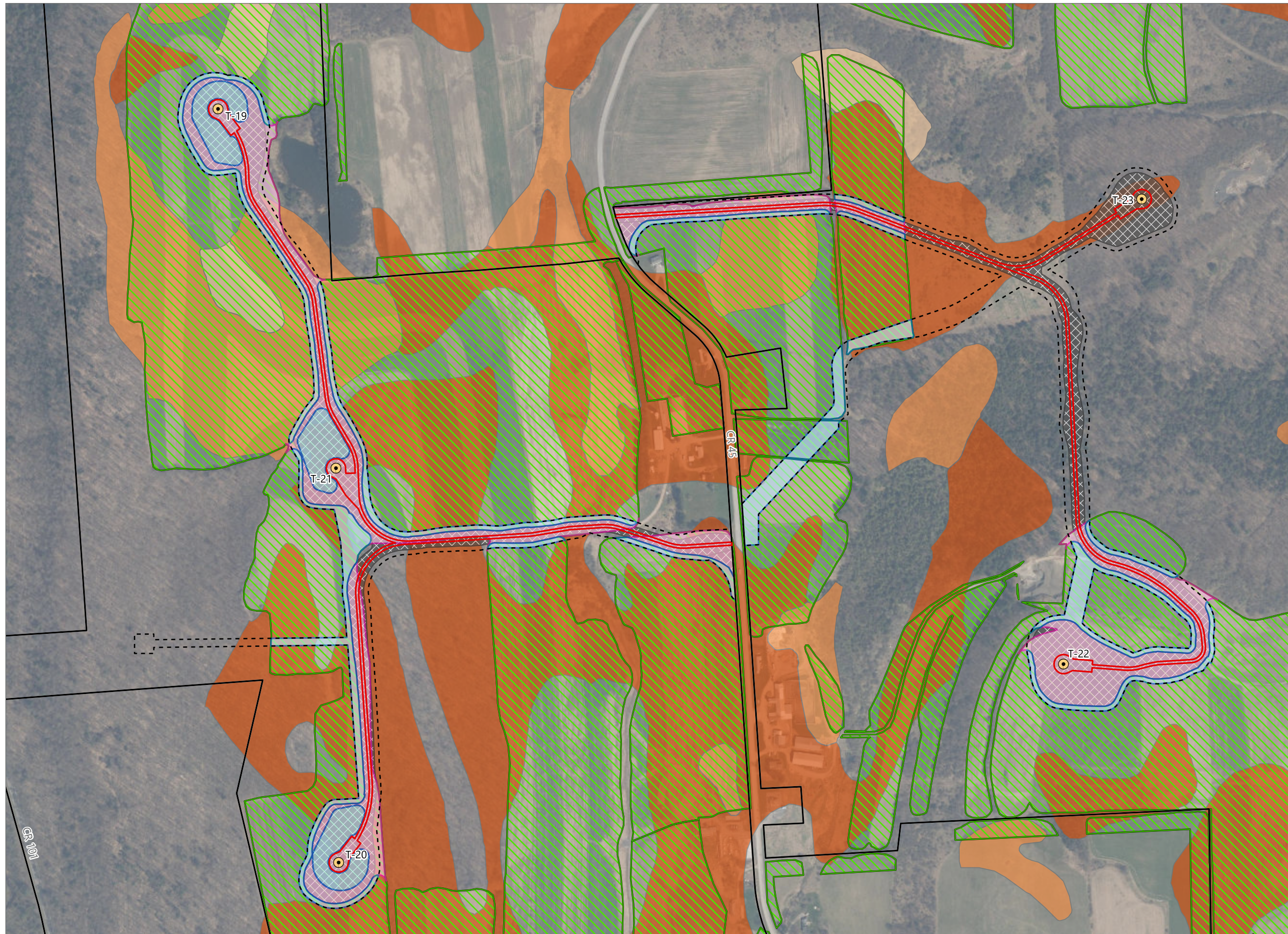
- Active Agricultural Land
- Temporary Impacts During Operation*
- Temporary Impacts During Construction**
- Mineral Soil Group
 - Group 1
 - Group 2
 - Group 3
 - Group 4
- Limit of Grading
- Limit of Impervious Surface
- Limit of Disturbance
- Facility Site

Note:

*Areas impacted by the Facility that will be temporarily taken out of agricultural production during construction and operations.

**Areas impacted by the Facility that will be temporarily taken out of agricultural production until the end of the construction period, at which point they will be restored and returned to agricultural use.





Hoffman Falls Wind

Towns of Eaton, Fenner, Nelson and Smithfield, Madison County, New York

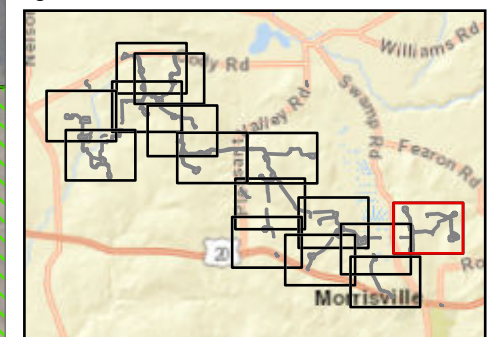
Section 94-c Second Supplement Matter No. 23-00038

- Active Agricultural Land
- Temporary Impacts During Operation*
- Temporary Impacts During Construction**
- Mineral Soil Group
 - Group 2
 - Group 3
 - Group 4
- Facility Components
 - Wind Turbine
 - Limit of Grading
 - Limit of Impervious Surface
 - Limit of Disturbance
 - Facility Site

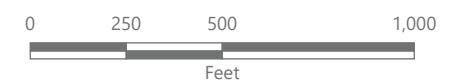
Note:

*Areas impacted by the Facility that will be temporarily taken out of agricultural production during construction and operations.

**Areas impacted by the Facility that will be temporarily taken out of agricultural production until the end of the construction period, at which point they will be restored and returned to agricultural use.



Sheet 15 of 15



Prepared September 10, 2024
 Basemap: NYSDOP "2022" orthoimagery map service