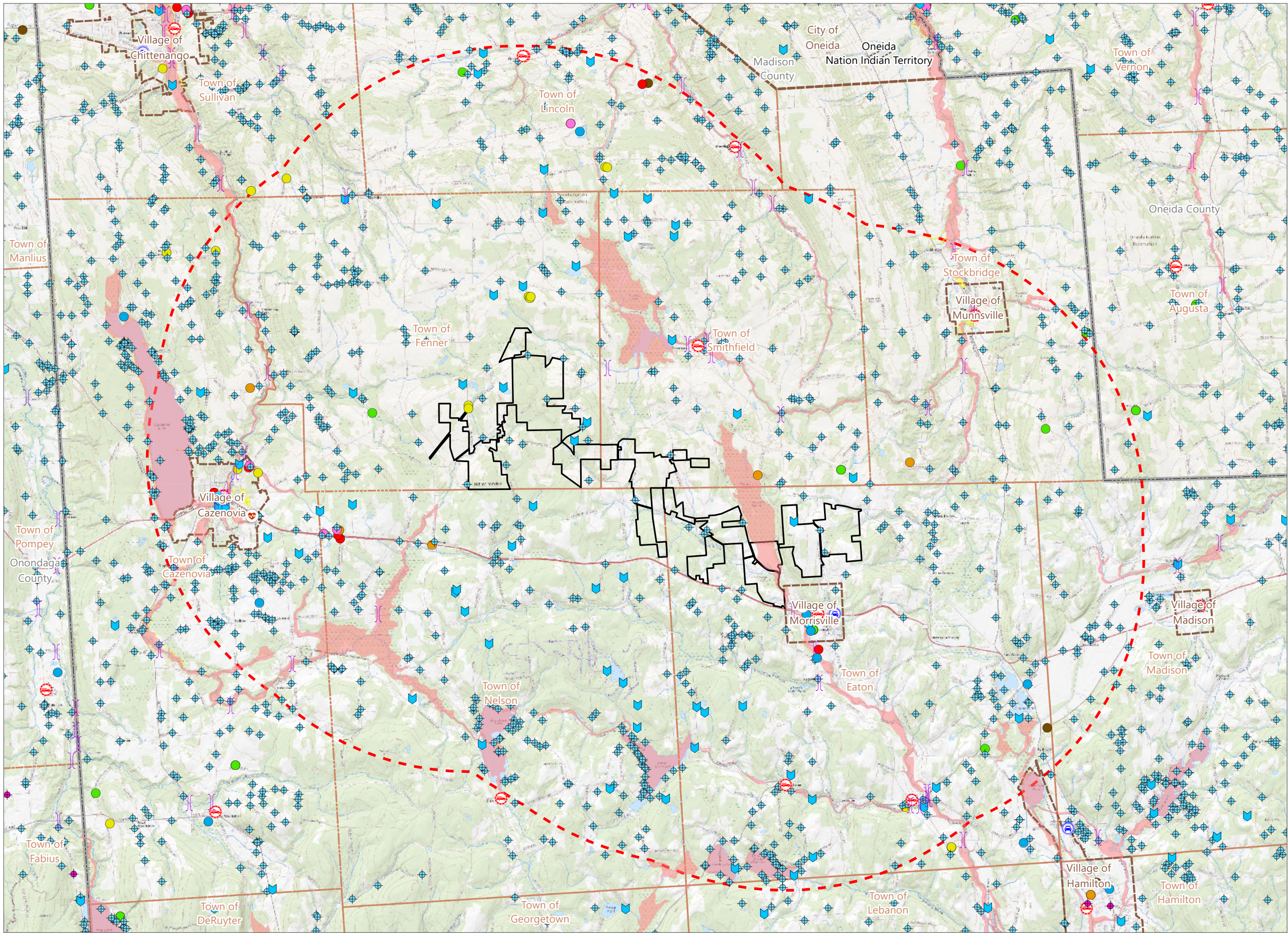


Figure 6-1. Public Health and Safety



Hoffman Falls Wind

Towns of Eaton, Fenner, Nelson and
Smithfield, Madison County,
New York

**94-c Permit Application
Matter No. 23-00038**

- ★ Emergency Operations Center
 - 🚑 Ambulance Corps
 - 🚒 Fire Station
 - 🚓 Police Station
 - 🏥 Hospital
 - 🌉 Bridge
 - 💧 NYSED Mapped Water Well
 - 💧 NYSED Water Withdrawal Location
 - 🏗️ Regulated Dam
 - ⚡ Electric Substation
 - 🧪 Chemical Bulk Storage Facility
 - 🌊 FEMA 100-Year Flood Hazard Area
 - 🌊 FEMA 500-Year Flood Hazard Area
- EPA Facility Interests in Study Area
- 🟢 Concentrated Animal Feeding Operation
 - 🟠 Hazardous Waste Biennial Reporter
 - 🟡 TRI Reporter
 - 🔴 EPA Regulated Facility
 - 🟤 NYSED Remediation Site
- Facility Components
- 📐 Facility Site
 - 🔴 5-Mile Study Area



Prepared February 5, 2024
Basemap: Esri "USGS Topo" map service