

EXISTING VIEW



Note: Printed at actual size, the existing view image is 15 inches wide by 10 inches high. At this size and focal length, the existing view image should be viewed from a distance 21 inches from the eye of the viewer.

0 1in 2 in
This scale is designed to insure the simulation images are printed at the intended size.

VIEWPOINT 33
Chenango Street

Hoffman Falls Wind Project
Towns of Eaton, Fenner, Nelson, and Smithfield, Madison County, New York

EDR

WIREFRAME RENDERING



Note: Printed at actual size, the resulting simulation image is 15 inches wide by 10 inches high. At this size and focal length, the simulation should be viewed from a distance 21 inches from the eye of the viewer.

0 1in 2 in
This scale is designed to insure the simulation images are printed at the intended size.

VIEWPOINT 33
Chenango Street

Hoffman Falls Wind Project
Towns of Eaton, Fenner, Nelson, and Smithfield, Madison County, New York

EDR



Note: The image above is a panorama photograph taken from Madison Road in the Town of Eaton panning clockwise from west (left) to northeast (right). The green rectangle represents the extent of the simulated photograph.

VIEWPOINT 36
Madison Road

VIEWPOINT INFORMATION

Location: Madison Road
Town: Eaton
County: Madison
Latitude: 42.89218° N
Longitude: 75.64359° W

LOCATION INFORMATION

Distance Zone Represented in View: Middle ground
Viewer Distance*: 1.5 miles
Landscape Similarity Zone: Village
Viewer/User Group(s): Local Residents, Tourists/
Recreational Users

Visually Sensitive Resource(s): State University of New York College of Agriculture and Technology at Morrisville, Edward R Andrews Elementary School, Village of Morrisville

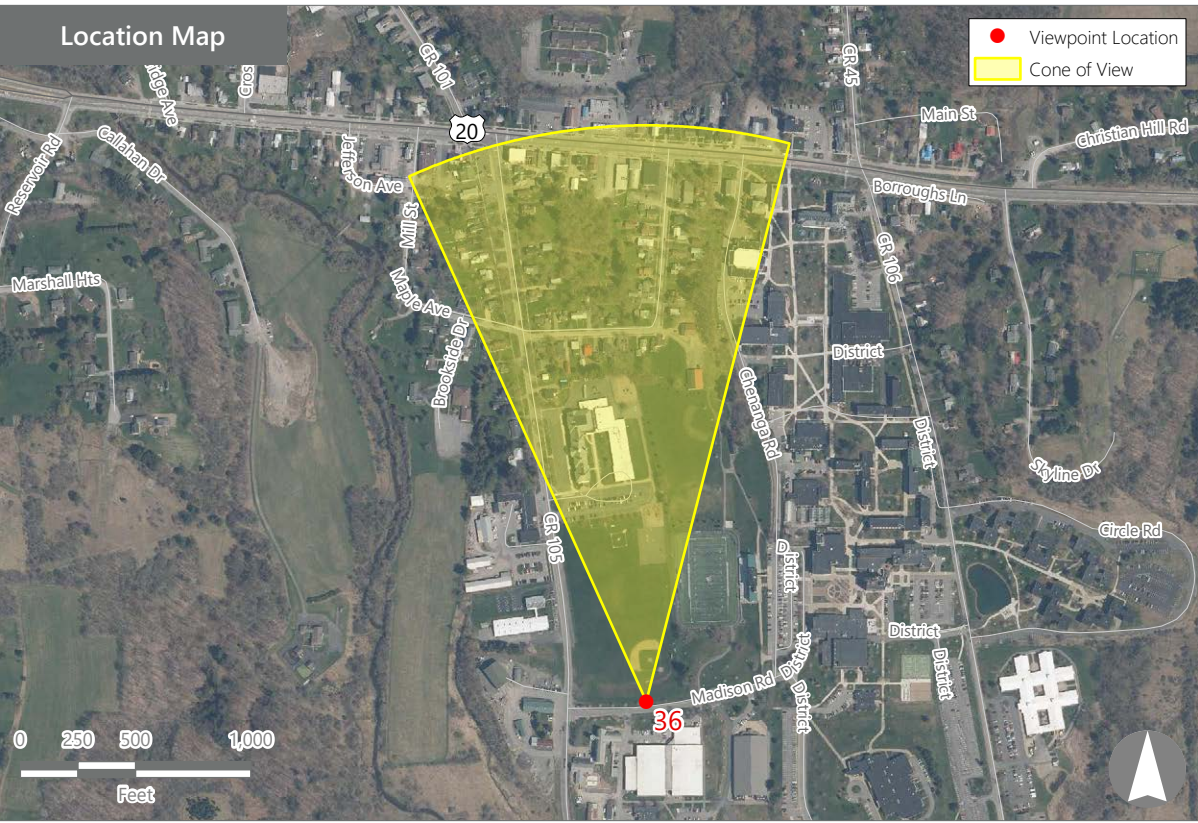
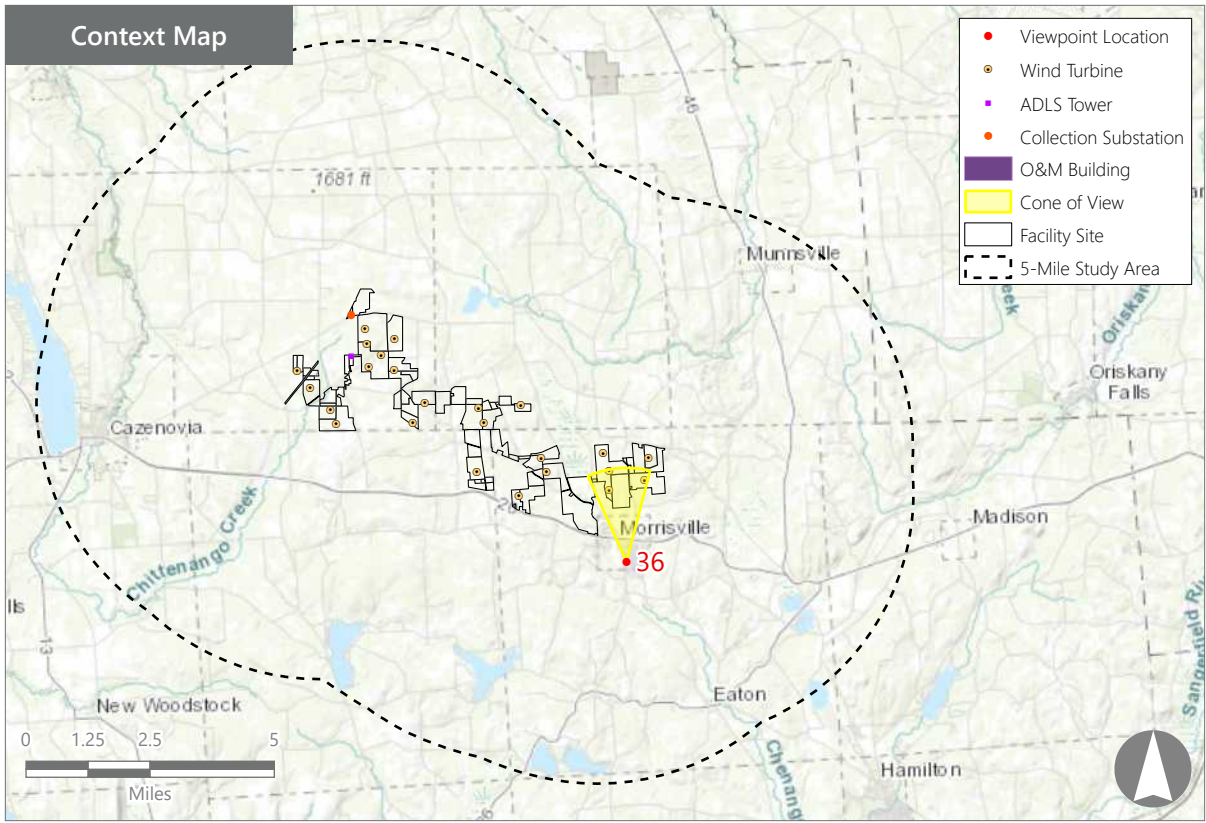
PHOTOGRAPH INFORMATION

Date: August 31, 2023
Time: 2:00 PM
Camera: Canon EOS 5D Mark IV
Resolution: 24 Megapixels
Lens Focal Length (35mm equivalent): 50 mm
Camera Elevation: 1,298 feet
Field of View: 39 degrees
Direction of View: North
Printed Size: 10" x 15"
Viewing Distance**: 21"

NOTES

*Distance as measured from the viewpoint to the closest wind turbine generator within the simulated photograph's field of view

**The simulation is at the correct perspective when printed on an 11 inch by 17 inch sheet at full scale, and viewed approximately 21 inches from the eye of the viewer.



Hoffman Falls Wind Project
Towns of Eaton, Fenner, Nelson, and Smithfield, Madison County, New York

Visual Impact Assessment
Appendix 8-A

Viewpoint Sensitivity¹:

Scenic Quality:

- ☒ Low
- ☒ Moderate
- ☐ High

Viewer Exposure

Frequency:

- ☐ Rare
- ☐ Occasional
- ☒ Regular/Repeated

Duration of View:

- ☐ Short/Brief/Fleeting
- ☒ Moderate
- ☒ Long

¹Viewpoint Sensitivity information is gathered from rating panel results. Scenic Quality is an average based on Low = 1, Moderate = 2, High = 3. Viewer Exposure reflects all those selected be the review panel.

Contrast Rating Scores²:

| Component | Score | Contrast Rating |
|-----------------|---------|----------------------|
| | Install | |
| Landform | 2.2 | Moderate |
| Vegetation | 1.7 | Minimal/Moderate |
| Land Use | 1.7 | Minimal/Moderate |
| Water | N/A | N/A |
| Sky | 2.3 | Moderate/Appreciable |
| Viewer Activity | 2.7 | Moderate/Appreciable |
| AVERAGE | 2.1 | Moderate |

² Contrast Rating Scale: 0.0 - 0.2 (Insignificant), 0.3 – 0.7 (Insignificant/Minimal), 0.8 – 1.2 (Minimal), 1.3 – 1.7 (Minimal/Moderate), 1.8 - 2.2 (Moderate), 2.3 – 2.7 (Moderate/Appreciable), 2.8 – 3.2 (Appreciable) 3.3 – 3.7 Appreciable/Strong), 3.8 – 4.0 (Strong).

Contrast Rating - Lowest and Highest Scores:

| Post - Install | | |
|-----------------|-------|------|
| Component | Score | |
| | Low | High |
| Landform | 1.5 | 3.0 |
| Vegetation | 1.0 | 2.0 |
| Land Use | 1.0 | 2.0 |
| Water | NA | NA |
| Sky | 2.0 | 2.5 |
| Viewer Activity | 2.0 | 3.0 |

Existing View



Proposed View (Post Installation)



Existing View

Viewpoint 36 is located on Madison Road in the Town of Eaton, approximately 1.5 miles from the nearest proposed wind turbine that would be visible in the selected photo's field of view. This viewpoint occurs adjacent to a complex of athletic fields on the SUNY Morrisville campus in the village LSZ. It is representative of open views that could be available to local residents, students/student athletes, and visitors to the college. The existing view to the north looks across an open grass playing field that extends from the immediate foreground to the middle ground. The middle ground is characterized by a mix of trees, mowed lawns, and campus structures including a parking lot, basketball court, running track, and various historic buildings, that serve as focal points in the view. The background is defined by a wooded hill that rises behind the campus structures and blocks views of more distant landscape features. The fields, paved surfaces, and low buildings create strong horizontal lines in the view, but vertical elements, including light stanchions, flagpoles, and chimneys, are also present (although only the light stanchions break the horizon line). The view has an open, well-organized composition with moderate scenic quality.

Proposed View

With the proposed Project in place, a cluster of three wind turbines extend above the hilltop behind the large brick campus building in the center of the view, and another two wind turbines are visible above the trees on the right. The turbines are screened to varying degrees by the forested hill in the background, but the nacelles, rotors, and portions of the towers are visible on all. The turbines are novel new focal points that draw the viewers' eye away from the field and campus buildings. However, they are far enough away that their scale contrast is not overwhelming, and their vertical line is consistent with several of the existing built features in the view. It is unlikely that the turbines would distract athletes engaged in highly active uses, but may minimally distract less active spectators at the playing fields, and their visibility will decrease as one moves north into the SUNY Morrisville campus proper, due to increased screening by campus buildings and trees and the forested hill to the north. The turbines are also consistent with turbines from other existing wind farms that are visible along Route 20 both east and west of the Village of Morrisville.

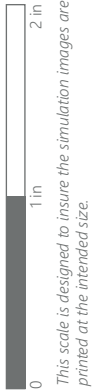
Hoffman Falls Wind Project

Towns of Eaton, Fenner, Nelson, and Smithfield, Madison County, New York

EXISTING VIEW



Note: Printed at actual size, the existing view image is 15 inches wide by 10 inches high. At this size and focal length, the existing view image should be viewed from a distance 21 inches from the eye of the viewer.



VIEWPOINT 36
Madison Road

Hoffman Falls Wind Project
Towns of Eaton, Fenner, Nelson, and Smithfield, Madison County, New York





Note: Printed at actual size, the resulting simulation image is 15 inches wide by 10 inches high. At this size and focal length, the simulation should be viewed from a distance 21 inches from the eye of the viewer.

0 1in 2in
This scale is designed to insure the simulation images are printed at the intended size.

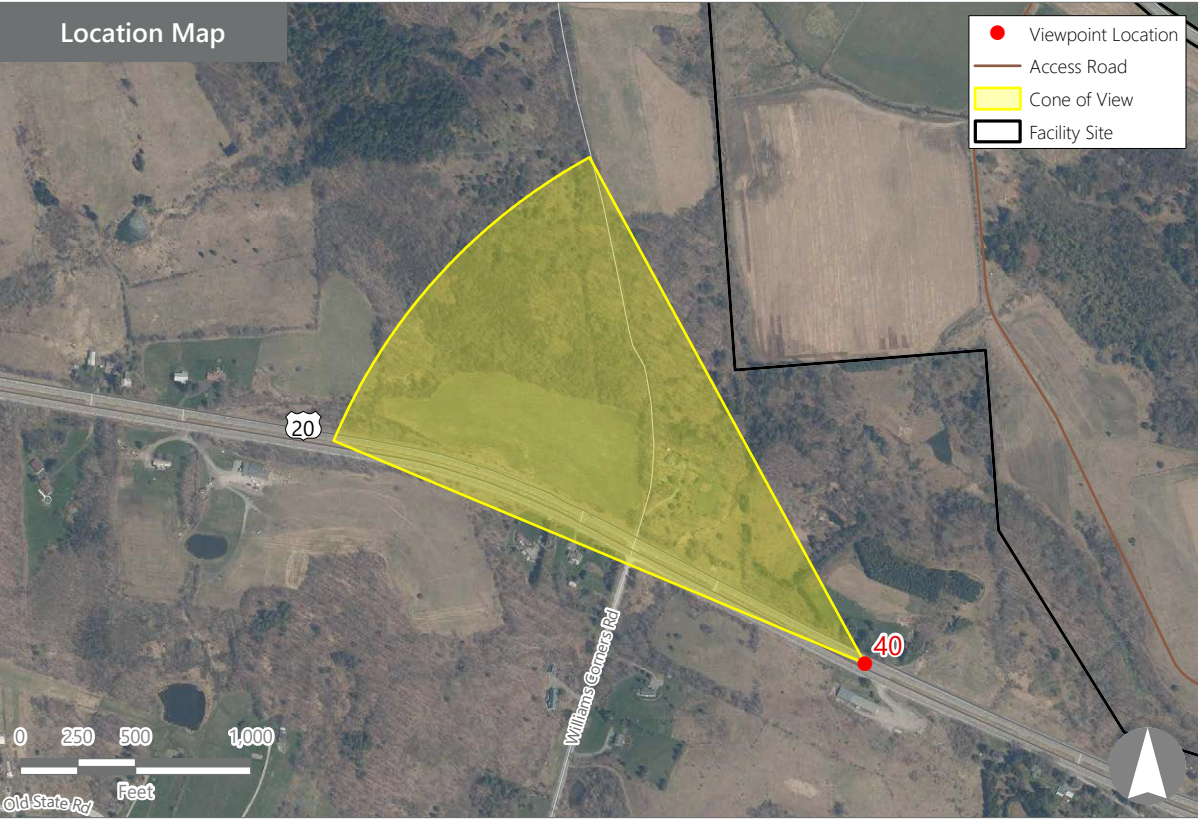
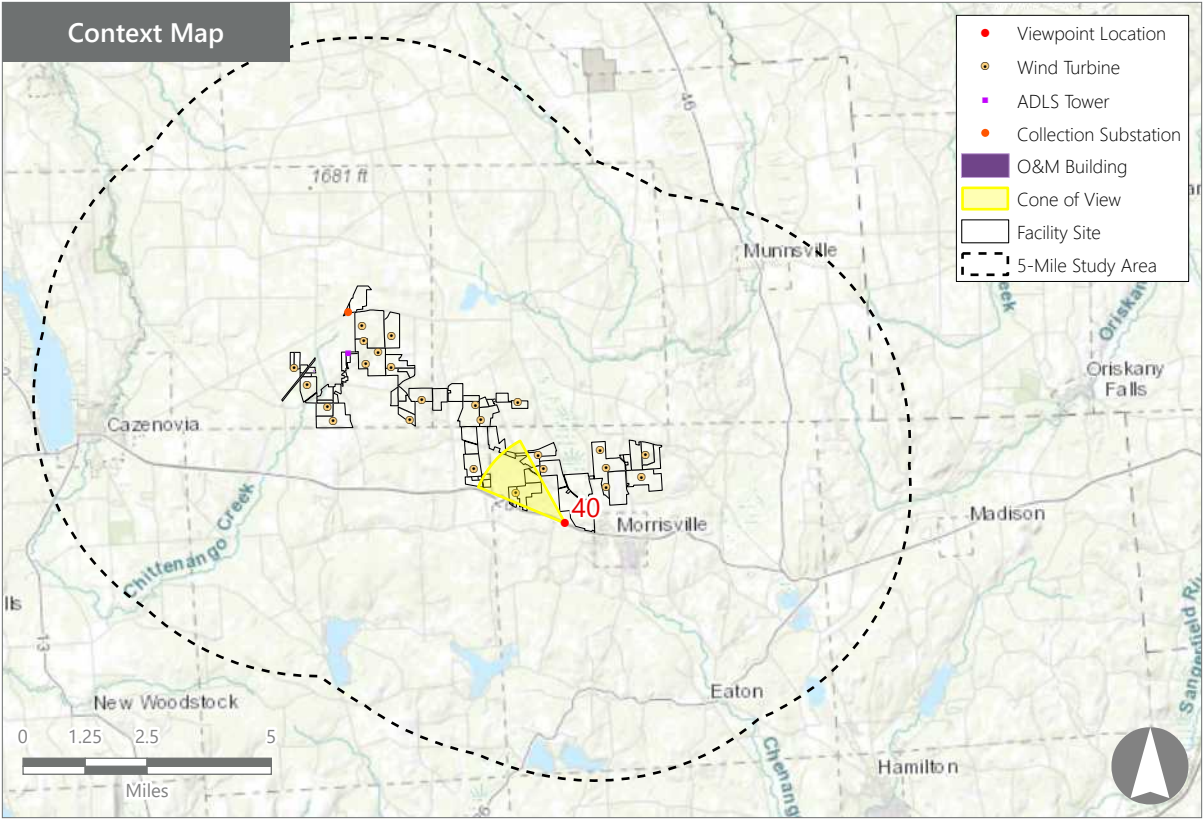
VIEWPOINT 36
Madison Road

Hoffman Falls Wind Project
Towns of Eaton, Fenner, Nelson, and Smithfield, Madison County, New York





Note: The image above is a panorama photograph taken from US Route 20 in the Town of Eaton panning clockwise from northwest (left) to northeast (right). The green rectangle represents the extent of the simulated photograph.



VIEWPOINT 40
US Route 20

VIEWPOINT INFORMATION

Location: US Route 20

Town: Eaton

County: Madison

Latitude: 42.90269° N

Longitude: 75.66670° W

LOCATION INFORMATION

Distance Zone Represented in View: Middle ground

Viewer Distance*: 1.2 miles

Landscape Similarity Zone: Agricultural/Rural Residential

Viewer/User Group(s): Local Residents, Through-Travelers

Visually Sensitive Resource(s): Scenic Route 20, US Route 20

PHOTOGRAPH INFORMATION

Date: August 31, 2023

Time: 2:20 PM

Camera: Canon EOS 5D Mark IV

Resolution: 24 Megapixels

Lens Focal Length (35mm equivalent): 50 mm

Camera Elevation: 1,466 feet

Field of View: 39 degrees

Direction of View: Northwest

Printed Size: 10" x 15"

Viewing Distance:** 21"

NOTES

*Distance as measured from the viewpoint to the closest wind turbine generator within the simulated photograph's field of view

**The simulation is at the correct perspective when printed on an 11 inch by 17 inch sheet at full scale, and viewed approximately 21 inches from the eye of the viewer.

Hoffman Falls Wind Project

Towns of Eaton, Fenner, Nelson, and Smithfield, Madison County, New York

Visual Impact Assessment
Appendix 8-A

Viewpoint Sensitivity¹:

Scenic Quality:
☒ Low
☒ Moderate
☐ High

Viewer Exposure
Frequency:
☐ Rare
☒ Occasional
☒ Regular/Repeated

Duration of View:
☒ Short/Brief/Fleeting
☒ Moderate
☐ Long

¹Viewpoint Sensitivity information is gathered from rating panel results. Scenic Quality is an average based on Low = 1, Moderate = 2, High = 3. Viewer Exposure reflects all those selected by the review panel.

Contrast Rating Scores²:

| Component | Score | Contrast Rating |
|-----------------|---------|------------------|
| | Install | |
| Landform | 1.5 | Minimal/Moderate |
| Vegetation | 1.5 | Minimal/Moderate |
| Land Use | 1.2 | Minimal |
| Water | N/A | N/A |
| Sky | 2.0 | Moderate |
| Viewer Activity | 0.8 | Minimal |
| AVERAGE | 1.4 | Minimal/Moderate |

² Contrast Rating Scale: 0.0 - 0.2 (Insignificant), 0.3 - 0.7 (Insignificant/Minimal), 0.8 - 1.2 (Minimal), 1.3 - 1.7 (Minimal/Moderate), 1.8 - 2.2 (Moderate), 2.3 - 2.7 (Moderate/Appreciable), 2.8 - 3.2 (Appreciable) 3.3 - 3.7 Appreciable/Strong), 3.8 - 4.0 (Strong).

Contrast Rating - Lowest and Highest Scores:

| Post - Install | | |
|-----------------|-------|------|
| Component | Score | |
| | Low | High |
| Landform | 0.5 | 2.0 |
| Vegetation | 1.0 | 2.0 |
| Land Use | 1.0 | 1.5 |
| Water | NA | NA |
| Sky | 1.5 | 2.5 |
| Viewer Activity | 0.5 | 1.0 |

Existing View



Proposed View (Post Installation)



Existing View

Viewpoint 40 is located on U.S. Route 20 in the Town of Eaton, approximately 1.2 miles from the nearest proposed wind turbine that would be visible in the selected photo's field of view. This viewpoint occurs in the Agricultural/Rural Residential LSZ and is representative of views available to local residents and through travelers. The existing view to the northwest from this location features the divided lanes of Route 20 extending from the immediate foreground to the background. The road angles away from the viewer and dips into a middle ground valley before ascending a wooded hill in the background and disappearing behind a bank of trees on the left. Other than the highway and small roadside markers, the view lacks developed features and is dominated by rolling wooded hills and swaths of open grass on the road median and shoulders. The hills and tall trees along the roadside limit the availability of long-distance views at this location. The view is characteristic of a lightly used rural parkway and is considered to have moderate scenic quality.

Proposed View

With the proposed Project in place, two wind turbines extend high into the sky above the wooded hill to the right of the highway in the background. The turbines' vertical line is compatible with the roadside markers, but their scale, texture, and form contrast with the existing vegetation and landform is notable. The turbines introduce large, novel forms into a primarily undeveloped rural landscape and become focal points in this view. The movement of their rotors will further draw viewer attention, but not to the point where they would create an unsafe distraction to drivers on Route 20. Their white color minimizes contrast with the sky and their presence is consistent with turbines from other existing wind farms that are visible from similar distances along Route 20. The rating panel indicated that the contrast with the existing landscape is moderate.

Hoffman Falls Wind Project

Towns of Eaton, Fenner, Nelson, and Smithfield, Madison County, New York

EXISTING VIEW



Note: Printed at actual size, the existing view image is 15 inches wide by 10 inches high. At this size and focal length, the existing view image should be viewed from a distance 21 inches from the eye of the viewer.



VIEWPOINT 40
US Route 20

Hoffman Falls Wind Project
Towns of Eaton, Fenner, Nelson, and Smithfield, Madison County, New York





Note: Printed at actual size, the resulting simulation image is 15 inches wide by 10 inches high. At this size and focal length, the simulation should be viewed from a distance 21 inches from the eye of the viewer.

0 1in 2 in
This scale is designed to insure the simulation images are printed at the intended size.

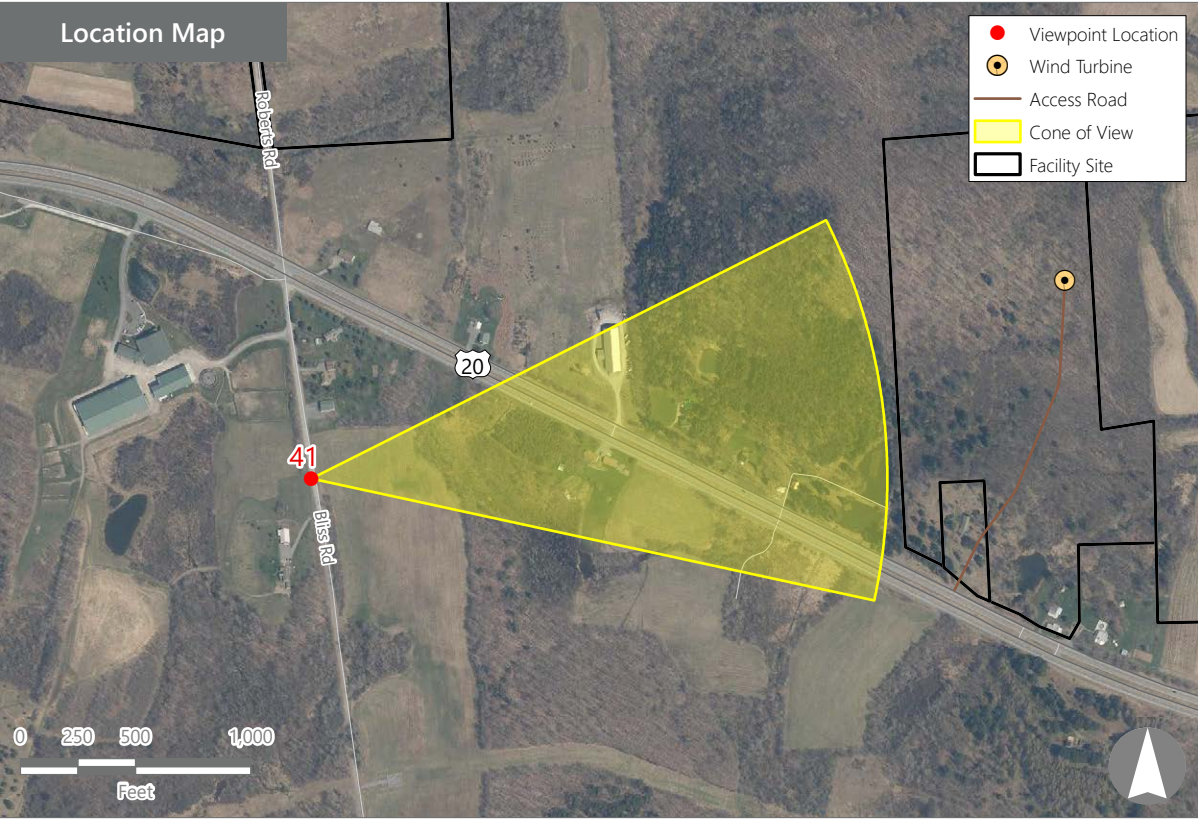
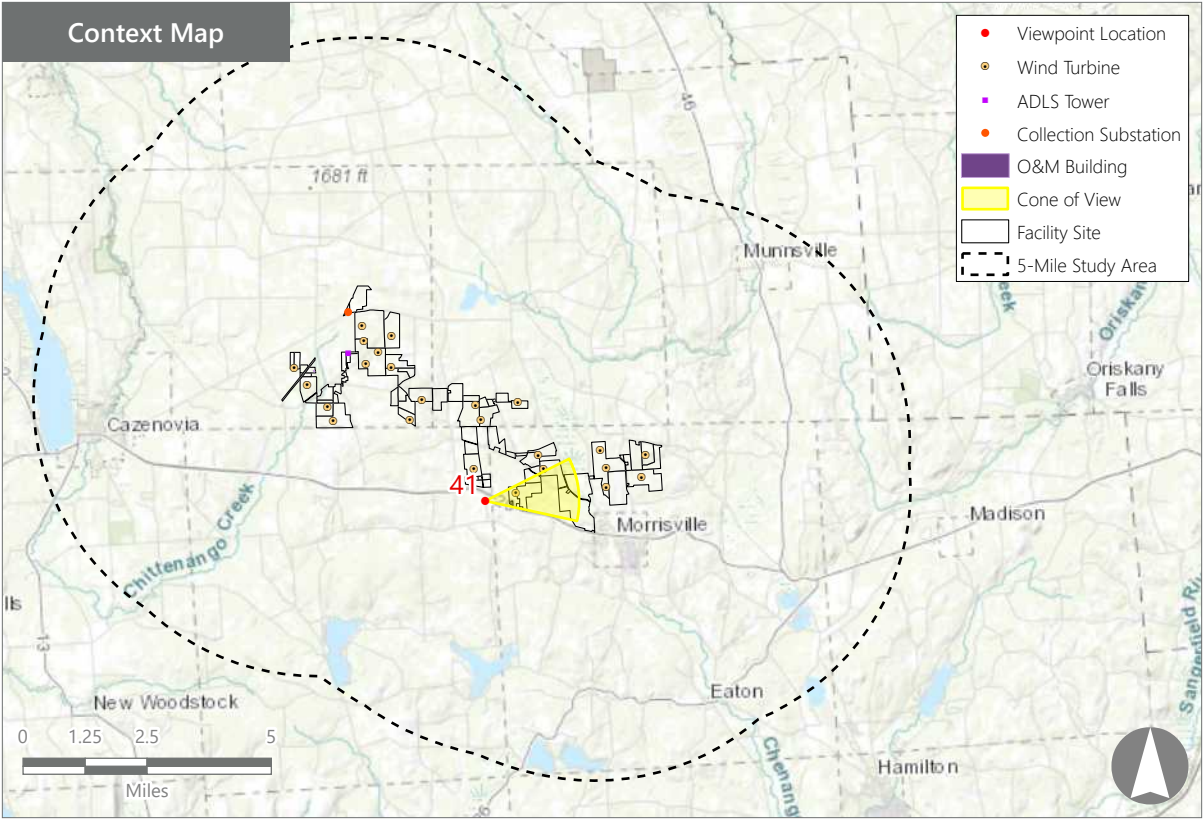
VIEWPOINT 40
US Route 20

Hoffman Falls Wind Project
Towns of Eaton, Fenner, Nelson, and Smithfield, Madison County, New York





Note: The image above is a panorama photograph taken from Bliss Road in the Town of Nelson panning clockwise from north (left) to southeast (right). The green rectangle represents the extent of the simulated photograph.



VIEWPOINT 41
Bliss Road

VIEWPOINT INFORMATION

Location: Bliss Road

Town: Nelson

County: Madison

Latitude: 42.90950° N

Longitude: 75.69829° W

LOCATION INFORMATION

Distance Zone Represented in View: Middle ground

Viewer Distance*: 0.6 mile

Landscape Similarity Zone: Agricultural/Rural Residential

Viewer/User Group(s): Local Residents, Tourists/Recreational Users

Visually Sensitive Resource(s): State University of New York College of Agriculture and Technology at Morrisville - Equine Center

PHOTOGRAPH INFORMATION

Date: August 31, 2023

Time: 2:28 PM

Camera: Canon EOS 5D Mark IV

Resolution: 24 Megapixels

Lens Focal Length (35mm equivalent): 50 mm

Camera Elevation: 1,701 feet

Field of View: 39 degrees

Direction of View: East

Printed Size: 10" x 15"

Viewing Distance:** 21"

NOTES

*Distance as measured from the viewpoint to the closest wind turbine generator within the simulated photograph's field of view

**The simulation is at the correct perspective when printed on an 11 inch by 17 inch sheet at full scale, and viewed approximately 21 inches from the eye of the viewer.

Hoffman Falls Wind Project

Towns of Eaton, Fenner, Nelson, and Smithfield, Madison County, New York

Visual Impact Assessment
Appendix 8-A

Viewpoint Sensitivity¹:

Scenic Quality:

- ☐ Low
- ☒ Moderate
- ☒ High

Viewer Exposure

Frequency:

- ☒ Rare
- ☒ Occasional
- ☒ Regular/Repeated

Duration of View:

- ☒ Short/Brief/Fleeting
- ☒ Moderate
- ☒ Long

¹Viewpoint Sensitivity information is gathered from rating panel results. Scenic Quality is an average based on Low = 1, Moderate = 2, High = 3. Viewer Exposure reflects all those selected by the review panel.

Contrast Rating Scores²:

| Component | Score | Contrast Rating |
|-----------------|---------|----------------------|
| | Install | |
| Landform | 2.3 | Moderate/Appreciable |
| Vegetation | 2.2 | Moderate |
| Land Use | 2.3 | Moderate/Appreciable |
| Water | N/A | N/A |
| Sky | 2.3 | Moderate/Appreciable |
| Viewer Activity | 2.3 | Moderate/Appreciable |
| AVERAGE | 2.3 | Moderate/Appreciable |

² Contrast Rating Scale: 0.0 - 0.2 (Insignificant), 0.3 - 0.7 (Insignificant/Minimal), 0.8 - 1.2 (Minimal), 1.3 - 1.7 (Minimal/Moderate), 1.8 - 2.2 (Moderate), 2.3 - 2.7 (Moderate/Appreciable), 2.8 - 3.2 (Appreciable) 3.3 - 3.7 Appreciable/Strong), 3.8 - 4.0 (Strong).

Contrast Rating - Lowest and Highest Scores:

| Post - Install | | |
|-----------------|-------|------|
| Component | Score | |
| | Low | High |
| Landform | 1.0 | 3.0 |
| Vegetation | 1.5 | 3.0 |
| Land Use | 2.0 | 3.0 |
| Water | NA | NA |
| Sky | 2.0 | 2.5 |
| Viewer Activity | 2.0 | 3.0 |

Existing View



Proposed View (Post Installation)



Existing View

Viewpoint 41 is located on Bliss Road in the Town of Madison, approximately 0.6 miles from the nearest proposed wind turbine that would be visible in the selected photo's field of view. This viewpoint is located in the Agricultural/Rural Residential LSZ and is representative of views available to local residents and users of the SUNY Morrisville Equine Center, south of Route 20. The landscape in this area is a mix of rolling fields and forests and the selected view to the east from this location includes an unmowed meadow backed by a forested hillside where glimpses of building rooftops are occasionally visible. The meadow descends from the roadside in the immediate foreground to the edge of the woods in the middle ground. From the woods edge, the forested hillside rises quickly and blocks views of more distant landscape features. The woods line and horizon line are relatively flat, and the selected view lacks any developed features/focal points. As a result, the rating panel indicated that this view has moderate to high scenic quality.

Proposed View

With the proposed Project in place, a single large wind turbine projects into the sky well above the hilltop. This turbine is relatively unscreened and close to the viewer, allowing details of its structure to be easily observed. At this distance, the turbine's scale contrast with the existing landform and vegetation is notable, and it becomes a dominant focal point in the view. Along with this nearby turbine, portions of additional, more distant turbines (in some cases just blade tips) are visible above the hilltop. These turbines add a degree of visual clutter, but also give the view a greater sense of depth and add elements of visual interest. As with the previous viewpoints, views of existing wind turbines are available throughout this area, and distance from a majority of the proposed turbines will limit changes to the character and scenic quality of the view. Although the contrast is indicated to be moderate to appreciable this view will be available to a limited number of viewers.

Hoffman Falls Wind Project

Towns of Eaton, Fenner, Nelson, and Smithfield, Madison County, New York

EXISTING VIEW



Note: Printed at actual size, the existing view image is 15 inches wide by 10 inches high. At this size and focal length, the existing view image should be viewed from a distance 21 inches from the eye of the viewer.



VIEWPOINT 41
Bliss Road

Hoffman Falls Wind Project
Towns of Eaton, Fenner, Nelson, and Smithfield, Madison County, New York





Note: Printed at actual size, the resulting simulation image is 15 inches wide by 10 inches high. At this size and focal length, the simulation should be viewed from a distance 21 inches from the eye of the viewer.

0 1in 2 in
This scale is designed to insure the simulation images are printed at the intended size.

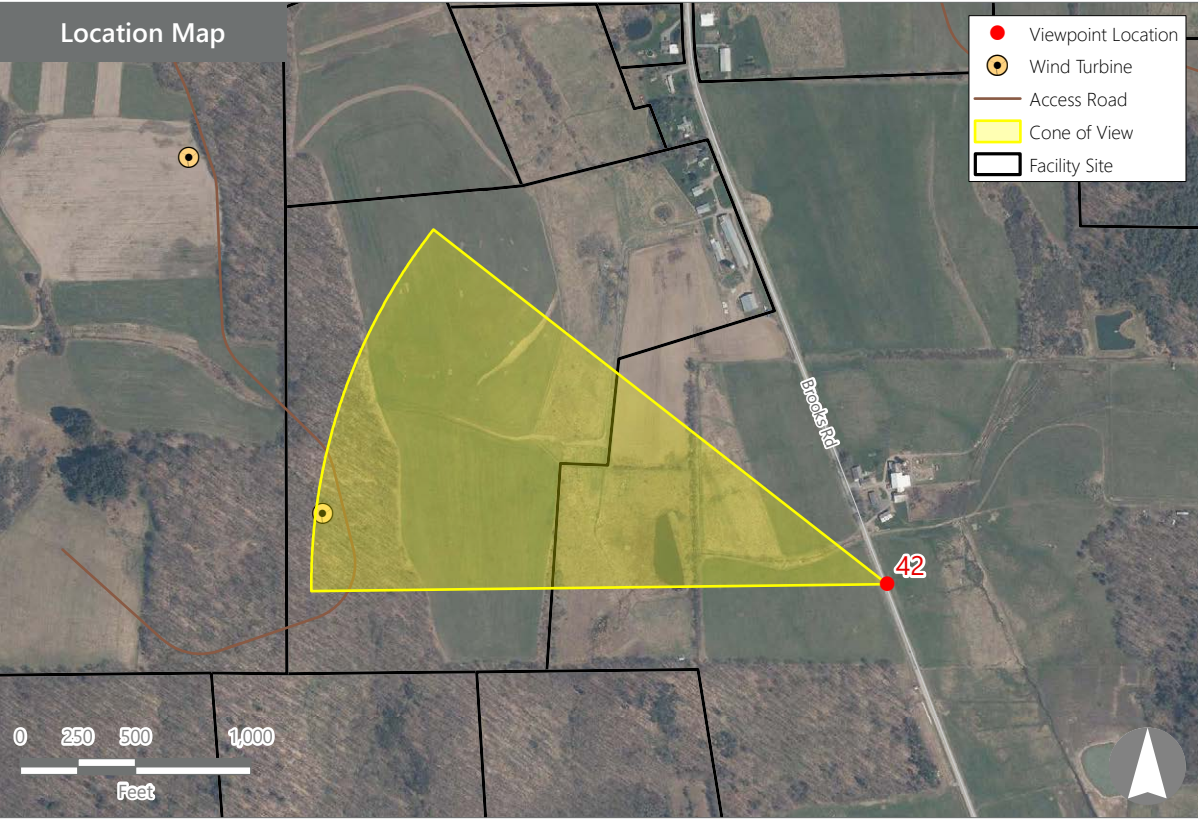
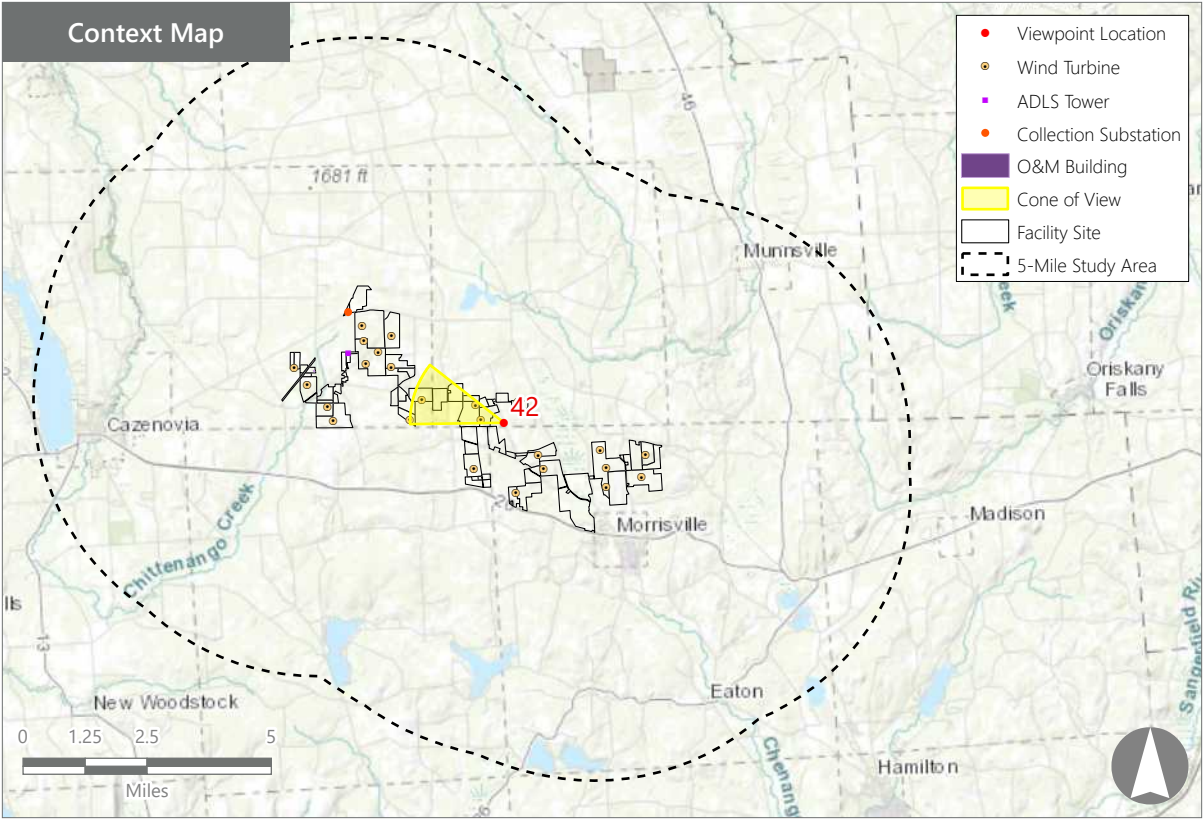
VIEWPOINT 41
Bliss Road

Hoffman Falls Wind Project
Towns of Eaton, Fenner, Nelson, and Smithfield, Madison County, New York





Note: The image above is a panorama photograph taken from Brooks Road in the Town of Smithfield panning clockwise from southwest (left) to north (right). The green rectangle represents the extent of the simulated photograph.



Hoffman Falls Wind Project
Towns of Eaton, Fenner, Nelson, and Smithfield, Madison County, New York

Visual Impact Assessment
Appendix 8-A

VIEWPOINT 42
Brooks Road

VIEWPOINT INFORMATION

Location: Brooks Road
Town: Smithfield
County: Madison
Latitude: 42.93223° N
Longitude: 75.69047° W

LOCATION INFORMATION

Distance Zone Represented in View: Foreground
Viewer Distance*: 0.5 mile
Landscape Similarity Zone: Agricultural/Rural
Residential
Viewer/User Group(s): Local Residents
Visually Sensitive Resource(s): Erie Canalway
National Heritage Corridor

PHOTOGRAPH INFORMATION

Date: August 31, 2023
Time: 2:41 PM
Camera: Canon EOS 5D Mark IV
Resolution: 24 Megapixels
Lens Focal Length (35mm equivalent): 50 mm
Camera Elevation: 1,491 feet
Field of View: 39 degrees
Direction of View: Northwest
Printed Size: 10" x 15"
Viewing Distance**: 21"

NOTES

*Distance as measured from the viewpoint to the closest wind turbine generator within the simulated photograph's field of view

**The simulation is at the correct perspective when printed on an 11 inch by 17 inch sheet at full scale, and viewed approximately 21 inches from the eye of the viewer.

Viewpoint Sensitivity¹:

Scenic Quality:

☐ Low

☒ Moderate

☒ High

Viewer Exposure

Frequency:

☒ Rare

☒ Occasional

☒ Regular/Repeated

Duration of View:

☒ Short/Brief/Fleeting

☐ Moderate

☒ Long

¹Viewpoint Sensitivity information is gathered from rating panel results. Scenic Quality is an average based on Low = 1, Moderate = 2, High = 3. Viewer Exposure reflects all those selected by the review panel.

Contrast Rating Scores²:

| Component | Score | Contrast Rating |
|-----------------|---------|----------------------|
| | Install | |
| Landform | 2.3 | Moderate/Appreciable |
| Vegetation | 2.3 | Moderate/Appreciable |
| Land Use | 2.3 | Moderate/Appreciable |
| Water | N/A | N/A |
| Sky | 2.7 | Moderate/Appreciable |
| Viewer Activity | 2.5 | Moderate/Appreciable |
| AVERAGE | 2.4 | Moderate/Appreciable |

² Contrast Rating Scale: 0.0 - 0.2 (Insignificant), 0.3 - 0.7 (Insignificant/Minimal), 0.8 - 1.2 (Minimal), 1.3 - 1.7 (Minimal/Moderate), 1.8 - 2.2 (Moderate), 2.3 - 2.7 (Moderate/Appreciable), 2.8 - 3.2 (Appreciable) 3.3 - 3.7 Appreciable/Strong), 3.8 - 4.0 (Strong).

Contrast Rating - Lowest and Highest Scores:

| Post - Install | | |
|-----------------|-------|------|
| Component | Score | |
| | Low | High |
| Landform | 0.5 | 3.5 |
| Vegetation | 1.5 | 3.5 |
| Land Use | 2.0 | 3.0 |
| Water | NA | NA |
| Sky | 2.0 | 3.0 |
| Viewer Activity | 2.0 | 3.0 |

Existing View



Proposed View (Post Installation)



Existing View

Viewpoint 42 is located on Brook Road in the Town of Smithfield, approximately 0.5 miles from the nearest proposed wind turbine that would be visible in the selected photo's field of view. This viewpoint is in the Agricultural/Rural Residential LSZ and is representative of views available to residents from their homes and local roads. This portion of the VSA includes a mix of fields and forests interspersed with widely scattered farms and rural homes. The existing view to the northwest from this location features an open hay field in the foreground that rises gently to a broken hedgerow that extends across the middle ground of the view. Beyond the hedgerow, the land continues to rise to a high point where open fields and treetops define the horizon line. These background features, as well as trees in the middle ground hedgerow, block views of other more distant landscape features. The abundance of open fields, elevated viewer perspective, and the clear blue sky overhead give this view an open, expansive feel. It has a strong rural/agricultural character and moderate to appreciable scenic quality.

Proposed View

With the proposed Project in place, a single large wind turbine has been added to the left side of the view. The base of the turbine is screened by vegetation in the middle ground hedgerow, but otherwise it is fully exposed. Due to its proximity to the viewer, the turbine appears tall, and its scale contrast with the existing vegetation is notable. Shadowing and reflection of the sun also increase the turbine's color contrast with the sky. Although trees in the hedgerow represent some other vertical landscape features that extend into the sky, the wind turbine is substantially taller, and becomes a prominent new focal point in this view. Although other developed features occur outside the photo's field of view, the turbine is the only developed feature in the selected photo, and its scale, form, and texture are in contrast with other natural and built features in the area. While the rural/agricultural character of this view will remain, the presence of the single unscreened turbine will alter the view's scenic quality and result in moderate/appreciable contrast.

Hoffman Falls Wind Project

Towns of Eaton, Fenner, Nelson, and Smithfield, Madison County, New York

EXISTING VIEW



Note: Printed at actual size, the existing view image is 15 inches wide by 10 inches high. At this size and focal length, the existing view image should be viewed from a distance 21 inches from the eye of the viewer.



VIEWPOINT 42
Brooks Road

Hoffman Falls Wind Project
Towns of Eaton, Fenner, Nelson, and Smithfield, Madison County, New York



PHOTOSIMULATION



Note: Printed at actual size, the resulting simulation image is 15 inches wide by 10 inches high. At this size and focal length, the simulation should be viewed from a distance 21 inches from the eye of the viewer.

0 1 in 2 in
This scale is designed to insure the simulation images are printed at the intended size.

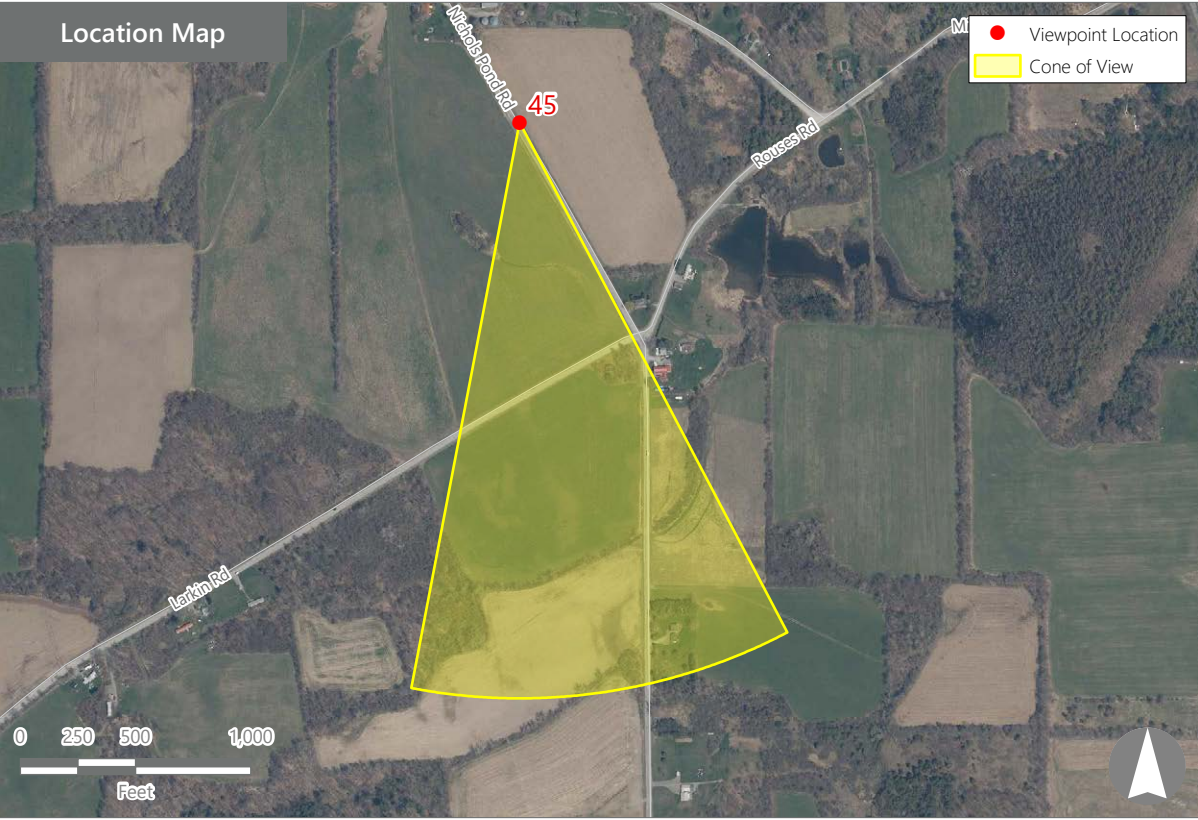
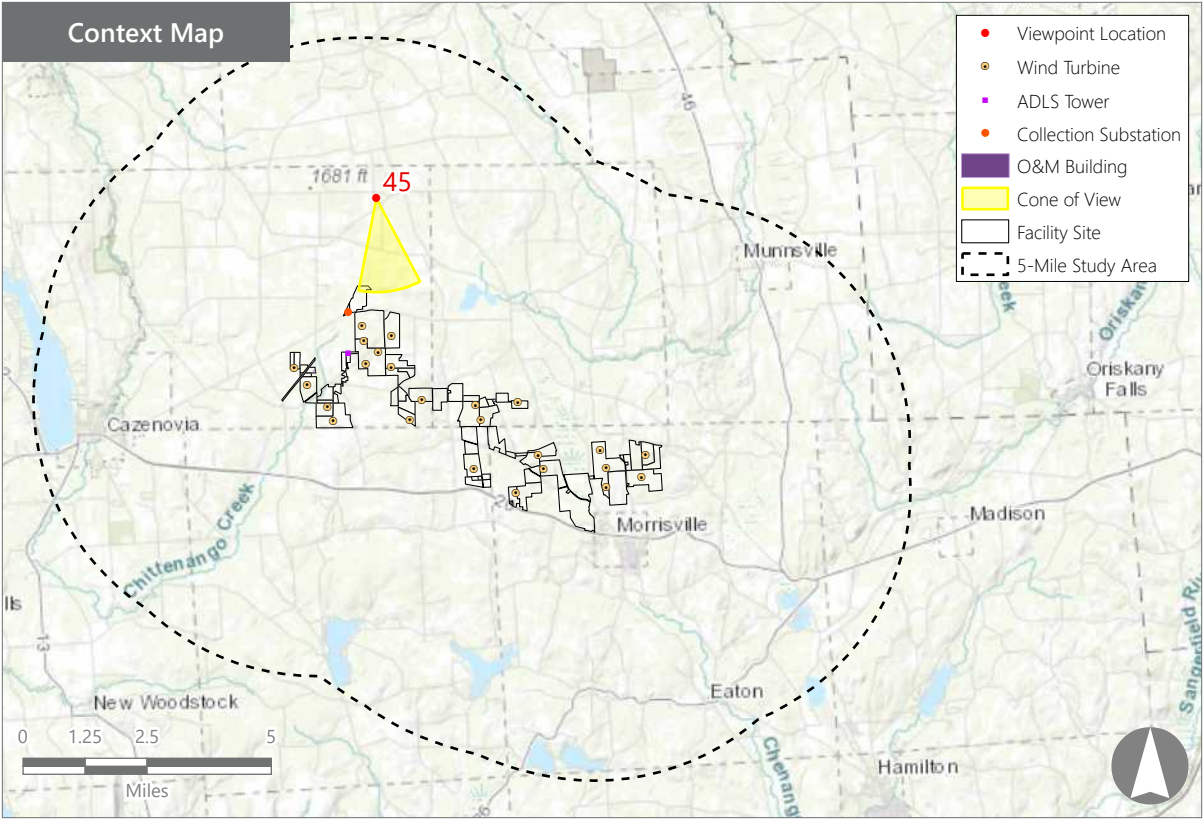
VIEWPOINT 42
Brooks Road

Hoffman Falls Wind Project
Towns of Eaton, Fenner, Nelson, and Smithfield, Madison County, New York





Note: The image above is a panorama photograph taken from Nichols Pond Road in the Town of Fenner panning clockwise from southeast (left) to northwest (right). The green rectangle represents the extent of the simulated photograph.



VIEWPOINT 45
Nichols Pond Road

VIEWPOINT INFORMATION

Location: Nichols Pond Road
Town: Fenner
County: Madison
Latitude: 42.99812° N
Longitude: 75.74024° W

LOCATION INFORMATION

Distance Zone Represented in View: Middle
Ground
Viewer Distance*: 2.6 miles
Landscape Similarity Zone: Agricultural/Rural
Residential
Viewer/User Group(s): Local Residents
Visually Sensitive Resource(s): Erie Canalway
National Heritage Corridor

PHOTOGRAPH INFORMATION

Date: August 31, 2023
Time: 3:10 PM
Camera: Canon EOS 5D Mark IV
Resolution: 24 Megapixels
Lens Focal Length (35mm equivalent): 50 mm
Camera Elevation: 1,355 feet
Field of View: 39 degrees
Direction of View: South
Printed Size: 10" x 15"
Viewing Distance:** 21"

NOTES

*Distance as measured from the viewpoint to the closest wind turbine generator within the simulated photograph's field of view

**The simulation is at the correct perspective when printed on an 11 inch by 17 inch sheet at full scale, and viewed approximately 21 inches from the eye of the viewer.

Hoffman Falls Wind Project
Towns of Eaton, Fenner, Nelson, and Smithfield, Madison County, New York

Visual Impact Assessment
Appendix 8-A

Viewpoint Sensitivity¹:

Scenic Quality:

- ☐ Low
- ☒ Moderate
- ☐ High

Viewer Exposure

Frequency:

- ☒ Rare
- ☒ Occasional
- ☒ Regular/Repeated

Duration of View:

- ☐ Short/Brief/Fleeting
- ☒ Moderate
- ☒ Long

¹Viewpoint Sensitivity information is gathered from rating panel results. Scenic Quality is an average based on Low = 1, Moderate = 2, High = 3. Viewer Exposure reflects all those selected by the review panel.

Contrast Rating Scores²:

| Component | Score | Contrast Rating |
|-----------------|---------|----------------------|
| | Install | |
| Landform | 2.0 | Moderate |
| Vegetation | 2.0 | Moderate |
| Land Use | 1.7 | Minimal/Moderate |
| Water | N/A | N/A |
| Sky | 2.3 | Moderate/Appreciable |
| Viewer Activity | 1.7 | Minimal/Moderate |
| AVERAGE | 1.9 | Moderate |

² Contrast Rating Scale: 0.0 - 0.2 (Insignificant), 0.3 - 0.7 (Insignificant/Minimal), 0.8 - 1.2 (Minimal), 1.3 - 1.7 (Minimal/Moderate), 1.8 - 2.2 (Moderate), 2.3 - 2.7 (Moderate/Appreciable), 2.8 - 3.2 (Appreciable) 3.3 - 3.7 Appreciable/Strong), 3.8 - 4.0 (Strong).

Contrast Rating - Lowest and Highest Scores:

| Post - Install | | |
|-----------------|-------|------|
| Component | Score | |
| | Low | High |
| Landform | 1.0 | 3.0 |
| Vegetation | 1.0 | 3.0 |
| Land Use | 1.0 | 2.5 |
| Water | NA | NA |
| Sky | 2.0 | 2.5 |
| Viewer Activity | 1.5 | 2.0 |

Existing View



Proposed View (Post Installation)



Existing View

Viewpoint 45 is located on Nichols Pond Road in the Town of Fenner, approximately 2.6 miles from the nearest proposed turbine that would be visible in the selected photograph's field of view. This viewpoint occurs in the Agricultural/Rural Residential LSZ and is typical of views available to residents from their homes and local roads. Views in this general area include large, upward sloping, open agricultural fields backed and bordered by woodlots. In the selected photo, the existing view to the south-southeast shows Nichols Road in the immediate foreground extending away from the viewer and out of frame to the left. A band of unmowed herbaceous vegetation borders the road, backed by a mowed agricultural field that extends to a band of forest vegetation in the middle ground. This woods line contains a modest gabled-roof house on the left side of the view. The residence extends into the adjacent agricultural field but is surrounded by thick foliage that partially obscures it. The middle ground band of woods includes a single silo that rises above the tree canopy and the roofs of other buildings. Beyond the tree line a mix of open fields and woodlots rises to the horizon. A transmission line also angles across the woods line and crests the horizon on the right. Two large wind turbines atop the bare crest of the hill appear dark against the light sky and dwarf the transmission line structures. The turbines are the primary focal point in this view, but the silo and residence serve as secondary focal points for the viewer. The rating panel indicated that the existing view has moderate scenic quality.

Proposed View

With the proposed Facility in place, additional more distant wind turbines are now visible above the horizon in the vicinity of the existing turbines. The new turbines are located beyond the crest of the hill and therefore appear somewhat smaller than the existing turbines and present slightly reduced color contrast with the sky. Although the new and existing turbines are clustered and appear to be part of one Facility, the additional turbines increase the intensity of development in the view. Their vertical line and angular form contrasts with the overall horizontality and rolling forms of the existing landscape, and they add visual clutter to the horizon. Open agricultural fields and woodlots in the foreground and middle ground maintain the view's rural agricultural character, and the new turbines do not appear out of character with a working agricultural landscape that already includes wind turbines. However, the larger grouping of turbines spread out across the horizon now make wind energy generation a more dominant land use. According to the rating panel, addition of the new turbines moderately reduces the scenic quality of the view.

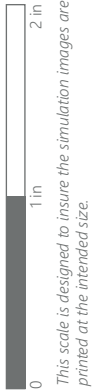
Hoffman Falls Wind Project

Towns of Eaton, Fenner, Nelson, and Smithfield, Madison County, New York

EXISTING VIEW



Note: Printed at actual size, the existing view image is 15 inches wide by 10 inches high. At this size and focal length, the existing view image should be viewed from a distance 21 inches from the eye of the viewer.



VIEWPOINT 45
Nichols Pond Road

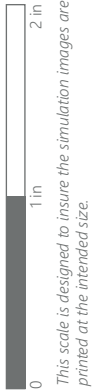
Hoffman Falls Wind Project
Towns of Eaton, Fenner, Nelson, and Smithfield, Madison County, New York



PHOTOSIMULATION



Note: Printed at actual size, the resulting simulation image is 15 inches wide by 10 inches high. At this size and focal length, the simulation should be viewed from a distance 21 inches from the eye of the viewer.



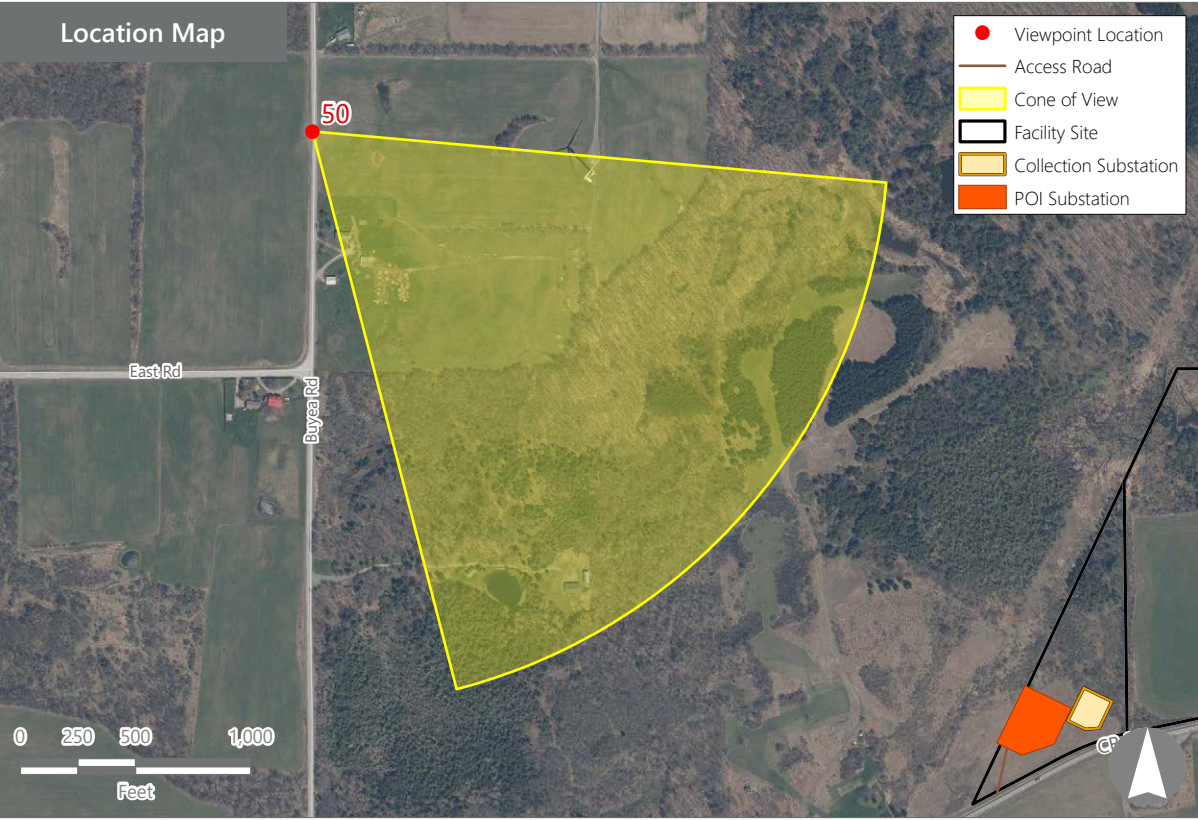
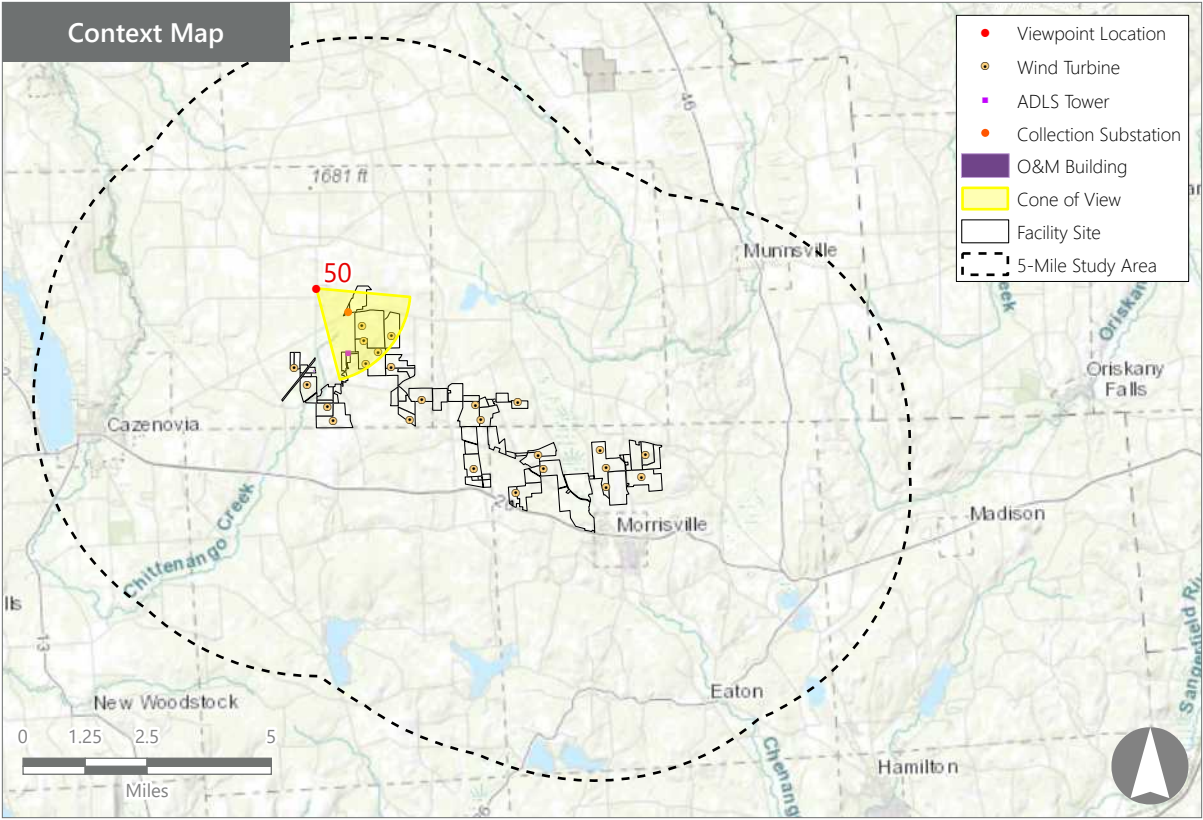
VIEWPOINT 45
Nichols Pond Road

Hoffman Falls Wind Project
Towns of Eaton, Fenner, Nelson, and Smithfield, Madison County, New York





Note: The image above is a panorama photograph taken from Buyea Road in the Town of Fenner panning clockwise from east (left) to southwest (right). The green rectangle represents the extent of the simulated photograph.



Hoffman Falls Wind Project
Towns of Eaton, Fenner, Nelson, and Smithfield, Madison County, New York

Visual Impact Assessment
Appendix 8-A

VIEWPOINT 50
Buyea Road

VIEWPOINT INFORMATION

Location: Buyea Road
Town: Fenner
County: Madison
Latitude: 42.97202° N
Longitude: 75.76444° W

LOCATION INFORMATION

Distance Zone Represented in View: Middle Ground
Viewer Distance*: 1.2 miles
Landscape Similarity Zone: Agricultural/Rural Residential
Viewer/User Group(s): Local Residents, Tourists/Recreational Users

Visually Sensitive Resource(s): Snow Valley Riders Snowmobile Trail, Erie Canalway National Heritage Corridor

PHOTOGRAPH INFORMATION

Date: August 31, 2023
Time: 3:56 PM
Camera: Canon EOS 5D Mark IV
Resolution: 24 Megapixels
Lens Focal Length (35mm equivalent): 50 mm
Camera Elevation: 1,701 feet
Field of View: 39 degrees
Direction of View: Southeast
Printed Size: 10" x 15"
Viewing Distance:** 21"

NOTES

*Distance as measured from the viewpoint to the closest wind turbine generator within the simulated photograph's field of view

**The simulation is at the correct perspective when printed on an 11 inch by 17 inch sheet at full scale, and viewed approximately 21 inches from the eye of the viewer.

Viewpoint Sensitivity¹:

Scenic Quality:

- ☐ Low
- ☒ Moderate
- ☒ High

Viewer Exposure

Frequency:

- ☐ Rare
- ☒ Occasional
- ☒ Regular/Repeated

Duration of View:

- ☒ Short/Brief/Fleeting
- ☒ Moderate
- ☐ Long

¹Viewpoint Sensitivity information is gathered from rating panel results. Scenic Quality is an average based on Low = 1, Moderate = 2, High = 3. Viewer Exposure reflects all those selected be the review panel.

Contrast Rating Scores²:

| Component | Score | Contrast Rating |
|-----------------|---------|----------------------|
| | Install | |
| Landform | 1.7 | Minimal/Moderate |
| Vegetation | 1.7 | Minimal/Moderate |
| Land Use | 2.0 | Moderate |
| Water | N/A | N/A |
| Sky | 2.7 | Moderate/Appreciable |
| Viewer Activity | 2.0 | Moderate |
| AVERAGE | 2.0 | Moderate |

² Contrast Rating Scale: 0.0 - 0.2 (Insignificant), 0.3 – 0.7 (Insignificant/Minimal), 0.8 – 1.2 (Minimal), 1.3 – 1.7 (Minimal/Moderate), 1.8 - 2.2 (Moderate), 2.3 – 2.7 (Moderate/Appreciable), 2.8 – 3.2 (Appreciable) 3.3 – 3.7 Appreciable/Strong), 3.8 – 4.0 (Strong).

Contrast Rating - Lowest and Highest Scores:

| Post - Install | | |
|-----------------|-------|------|
| Component | Score | |
| | Low | High |
| Landform | 0.5 | 3.0 |
| Vegetation | 0.5 | 3.0 |
| Land Use | 1.0 | 3.0 |
| Water | NA | NA |
| Sky | 2.0 | 3.0 |
| Viewer Activity | 1.5 | 3.0 |

Existing View



Proposed View (Post Installation)



Existing View

Viewpoint 50 is located on Buyea Road in the Town of Fenner, approximately 1.2 miles from the nearest proposed wind turbine that would be visible in the selected photograph's field of view. This viewpoint occurs in the Agricultural/Rural Residential LSZ and is typical of views available to local residents and recreational users of bike and snowmobile trails in the area. These views feature a gently rolling rural landscape comprised of large open fields, woodlots, and scattered farms, homes, and wind turbines. The selected photos present a panorama in which a section of Buyea Road is visible in the immediate foreground along the right edge of the view. The far left of the existing southeast view includes an open agricultural field that rises in a gentle undulating fashion from the immediate foreground to a middle ground hilltop where a large wind turbine flanked on both sides by patches of forest vegetation extends into the sky. The rolling topography slopes gently toward scattered farm equipment and decorative trees that edge an agricultural/residential lot backed by fields and a hedgerow that gently rise to more distant residential yards and a densely vegetated horizon line. Due to its proximity to the viewer, the turbine's large size and details of its form are clearly visible as is the lattice work of a nearby communication tower. The turbines white color and the motion of its rotor blades make this turbine a dominant focal point in the view. The rolling topography and background vegetation enclose the view and block views of more distant landscape features. The rating panel indicated that the existing view was well composed and visually interesting, resulting in moderate to high scenic quality.

Proposed View

With the proposed Facility in place, additional more distant wind turbines are now visible across much of the horizon. The new turbines are located beyond the crest of the hill which screens visibility to lower portions the turbine towers. Although the new turbines appear as an extension of the existing Facility, the quantity of additional turbines increases the intensity of development in the view. Their vertical line and angular form contrasts with the overall horizontality and rolling forms of the existing landscape, and they add visual clutter to the horizon. However, open agricultural fields and woodlots throughout the view maintain the existing rural agricultural character, and the new turbines do not appear out of character or scale with the working agricultural landscape that already includes wind turbines. However, the spread of turbines across the horizon now makes wind energy generation a more dominant land use. According to the rating panel, the addition of the new turbines may somewhat reduce the scenic quality of the view but could also add visual interest for some viewers.

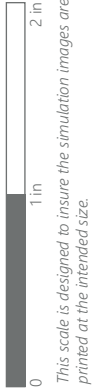
Hoffman Falls Wind Project

Towns of Eaton, Fenner, Nelson, and Smithfield, Madison County, New York



EXISTING VIEW

Note: Printed at actual size, the existing view image is 15 inches wide by 10 inches high. At this size and focal length, the existing view image should be viewed from a distance 21 inches from the eye of the viewer.



VIEWPOINT 50
Buyea Road

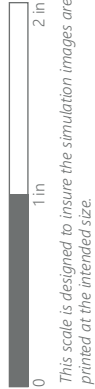
Hoffman Falls Wind Project
Towns of Eaton, Fenner, Nelson, and Smithfield, Madison County, New York





PHOTOSIMULATION

Note: Printed at actual size, the resulting simulation image is 15 inches wide by 10 inches high. At this size and focal length, the simulation should be viewed from a distance 21 inches from the eye of the viewer.



VIEWPOINT 50
Buyea Road

Hoffman Falls Wind Project
Towns of Eaton, Fenner, Nelson, and Smithfield, Madison County, New York



EXISTING VIEW



Note: Printed at actual size, the existing view image is 15 inches wide by 10 inches high. At this size and focal length, the existing view image should be viewed from a distance 21 inches from the eye of the viewer.



VIEWPOINT 50
Buyea Road

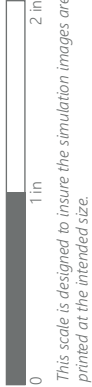
Hoffman Falls Wind Project
Towns of Eaton, Fenner, Nelson, and Smithfield, Madison County, New York



PHOTOSIMULATION



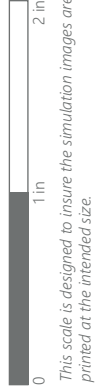
Note: Printed at actual size, the resulting simulation image is 15 inches wide by 10 inches high. At this size and focal length, the simulation should be viewed from a distance 21 inches from the eye of the viewer.



VIEWPOINT 50
Buyea Road

Hoffman Falls Wind Project
Towns of Eaton, Fenner, Nelson, and Smithfield, Madison County, New York



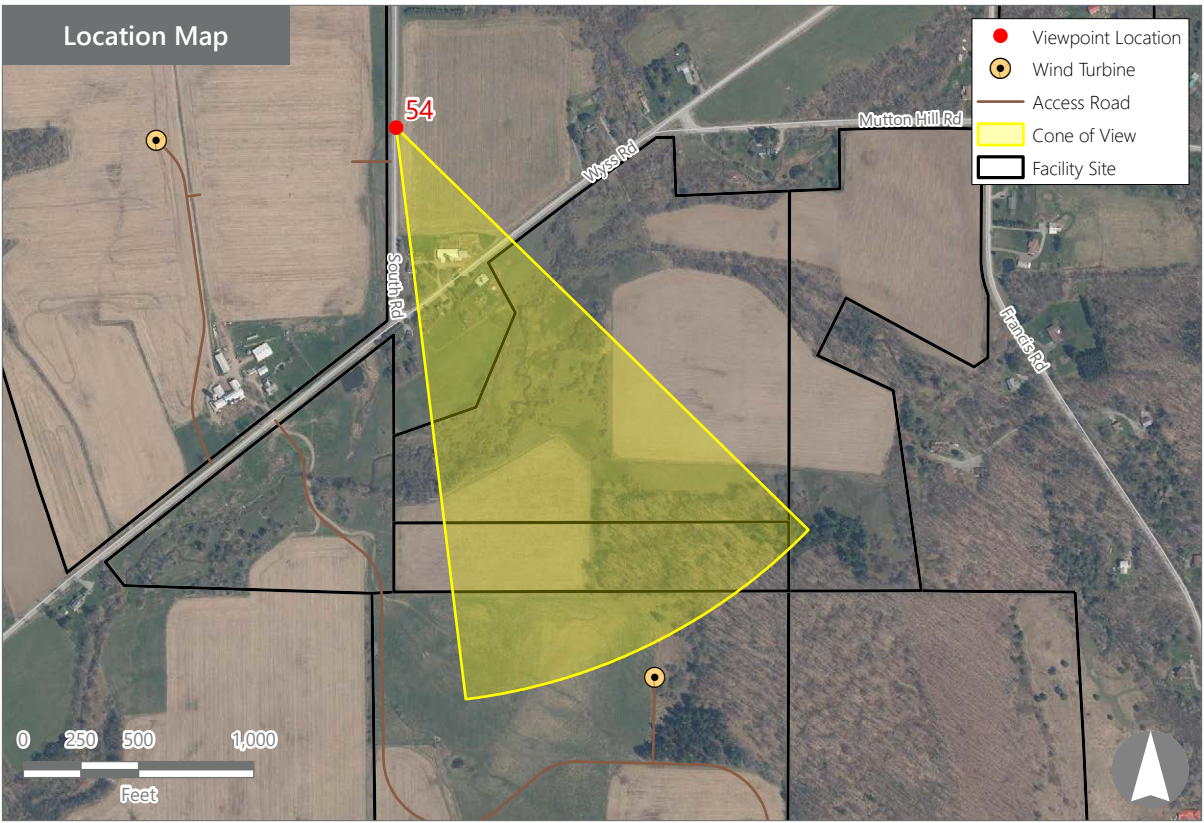
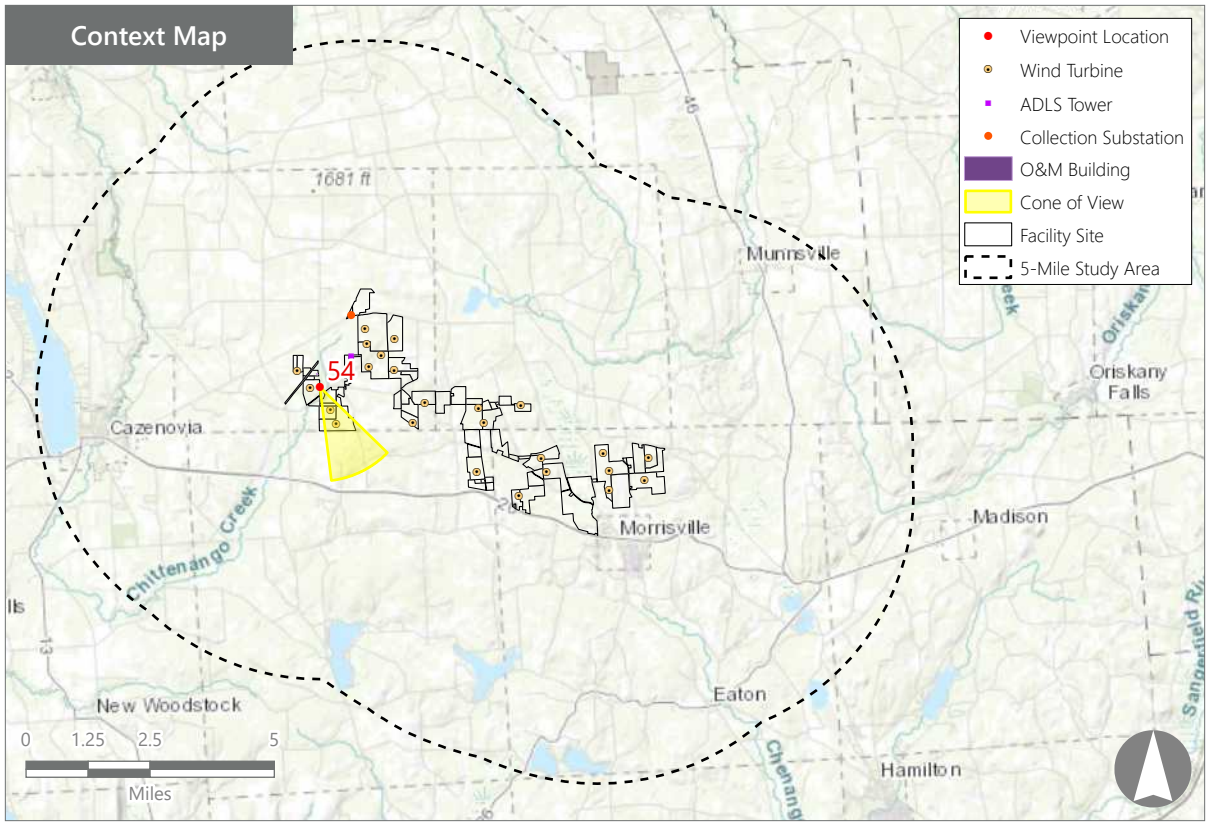


VIEWPOINT 50
Buyea Road





Note: The image above is a panorama photograph taken from South Road in the Town of Fenner panning clockwise from east (left) to southwest (right). The green rectangle represents the extent of the simulated photograph.



VIEWPOINT 54
South Road

VIEWPOINT INFORMATION

Location: South Road

Town: Fenner

County: Madison

Latitude: 42.94408° N

Longitude: 75.76462° W

LOCATION INFORMATION

Distance Zone Represented in View: Foreground

Viewer Distance*: 0.5 mile

Landscape Similarity Zone: Agricultural/Rural
Residential

Viewer/User Group(s): Local Residents

Visually Sensitive Resource(s): Erie Canalway
National Heritage Corridor

PHOTOGRAPH INFORMATION

Date: August 31, 2023

Time: 4:28 PM

Camera: Canon EOS 5D Mark IV

Resolution: 24 Megapixels

Lens Focal Length (35mm equivalent): 50 mm

Camera Elevation: 1,596 feet

Field of View: 39 degrees

Direction of View: South-southeast

Printed Size: 10" x 15"

Viewing Distance:** 21"

NOTES

*Distance as measured from the viewpoint to the closest wind turbine generator within the simulated photograph's field of view

**The simulation is at the correct perspective when printed on an 11 inch by 17 inch sheet at full scale, and viewed approximately 21 inches from the eye of the viewer.

Hoffman Falls Wind Project

Towns of Eaton, Fenner, Nelson, and Smithfield, Madison County, New York

Visual Impact Assessment
Appendix 8-A

Viewpoint Sensitivity¹:

Scenic Quality:

- ☐ Low
- ☐ Moderate
- ☒ High

Viewer Exposure

Frequency:

- ☒ Rare
- ☒ Occasional
- ☒ Regular/Repeated

Duration of View:

- ☒ Short/Brief/Fleeting
- ☐ Moderate
- ☒ Long

¹Viewpoint Sensitivity information is gathered from rating panel results. Scenic Quality is an average based on Low = 1, Moderate = 2, High = 3. Viewer Exposure reflects all those selected by the review panel.

Contrast Rating Scores²:

| Component | Score | Contrast Rating |
|-----------------|---------|-----------------|
| | Install | |
| Landform | 3.0 | Appreciable |
| Vegetation | 2.8 | Appreciable |
| Land Use | 2.8 | Appreciable |
| Water | N/A | N/A |
| Sky | 3.2 | Appreciable |
| Viewer Activity | 3.2 | Appreciable |
| AVERAGE | 3.0 | Appreciable |

² Contrast Rating Scale: 0.0 - 0.2 (Insignificant), 0.3 - 0.7 (Insignificant/Minimal), 0.8 - 1.2 (Minimal), 1.3 - 1.7 (Minimal/Moderate), 1.8 - 2.2 (Moderate), 2.3 - 2.7 (Moderate/Appreciable), 2.8 - 3.2 (Appreciable) 3.3 - 3.7 (Appreciable/Strong), 3.8 - 4.0 (Strong).

Contrast Rating - Lowest and Highest Scores:

| Post - Install | | |
|-----------------|-------|------|
| Component | Score | |
| | Low | High |
| Landform | 2.0 | 3.5 |
| Vegetation | 2.0 | 3.5 |
| Land Use | 2.5 | 3.0 |
| Water | NA | NA |
| Sky | 2.5 | 3.5 |
| Viewer Activity | 2.5 | 3.5 |

Existing View



Proposed View (Post Installation)



Existing View

Viewpoint 54 is located on South Road in the Town of Fenner, approximately 0.5 miles from the nearest proposed wind turbine that would be visible in the selected photo's field of view. This high elevation viewpoint is relatively even with the proposed turbine location and occurs in the Agricultural/Rural Residential LSZ. The viewpoint overlooks an area characterized by rolling agricultural lands broken up by woodlots and hedgerows. Due to the generally isolated location away from major highway arterials, the typical viewers at this location would be local residents. In the selected view to the south-southeast, rows of corn at mid height obscure views to the middle ground, however, background hills extend above the crop line. The middle ground descends into a valley, with only the upper portions of trees and agricultural buildings visible in the valley. The upper portion of a silo extending up from the valley is a focal point in the view, but the viewer's eye is also drawn to the opposite hill which occupies the entire background. The hill is slightly above the elevation of the viewer. It is half wooded and half agricultural meadowland, and blocks views of more distant landscape features. Above the ridge line the sky is clear blue and is uninterrupted by foreground trees or overhead wires. The crop line, valley, and horizon present gently rolling lines within the landscape. These are not hard lines because they are broken by the roofs of agricultural buildings and the jagged edges of crops and wood lots. The elevated viewer perspective and the descent of the valley between the viewer and the opposite hill create visual interest and high scenic quality according to the rating panel.

Proposed View

With the proposed Project in place, two wind turbines can be seen extending well into the sky at and beyond the ridgeline that defines the horizon. Some tree clearing to accommodate the turbines has occurred on the background hillside, but the change is not particularly noticeable. However, the height/scale contrast of the turbines relative to the rolling landform and trees on the ridgeline is substantial. A noticeable color contrast of the turbines with the sky also occurs due to lighting conditions; the dark shadow on their near face contrasting with the brightly lit white surfaces and the light blue sky. Due to their proximity to the viewer, and because they are completely unscreened by the ridgeline or any intervening features, details of the turbines are clearly visible and they become the dominant focal points in the view. The contrast of the turbines' vertical lines with the horizontal features of the landscape is slightly reduced by the rolling nature of the foreground and background horizontal features which are further broken by agricultural structures. Because the wind turbines now dominate the view, they alter the character and scenic quality of the view and result in appreciable visual contrast.

Hoffman Falls Wind Project

Towns of Eaton, Fenner, Nelson, and Smithfield, Madison County, New York

EXISTING VIEW



Note: Printed at actual size, the existing view image is 15 inches wide by 10 inches high. At this size and focal length, the existing view image should be viewed from a distance 21 inches from the eye of the viewer.



VIEWPOINT 54
South Road

Hoffman Falls Wind Project
Towns of Eaton, Fenner, Nelson, and Smithfield, Madison County, New York



PHOTOSIMULATION



Note: Printed at actual size, the resulting simulation image is 15 inches wide by 10 inches high. At this size and focal length, the simulation should be viewed from a distance 21 inches from the eye of the viewer.

0 1 in 2 in
This scale is designed to insure the simulation images are printed at the intended size.

VIEWPOINT 54
South Road

Hoffman Falls Wind Project
Towns of Eaton, Fenner, Nelson, and Smithfield, Madison County, New York





Note: The image above is a panorama photograph taken from Hardscrabble Road in the Town of Nelson panning clockwise from northwest (left) to east (right). The green rectangle represents the extent of the simulated photograph.

VIEWPOINT 58
Hardscrabble Road

VIEWPOINT INFORMATION

Location: Hardscrabble Road
Town: Nelson
County: Madison
Latitude: 42.88564° N
Longitude: 75.80842° W

LOCATION INFORMATION

Distance Zone Represented in View: Background
Viewer Distance*: 4.2 miles
Landscape Similarity Zone: Agricultural/Rural
Residential
Viewer/User Group(s): Local Residents, Through-
Travelers
Visually Sensitive Resource(s): None Identified

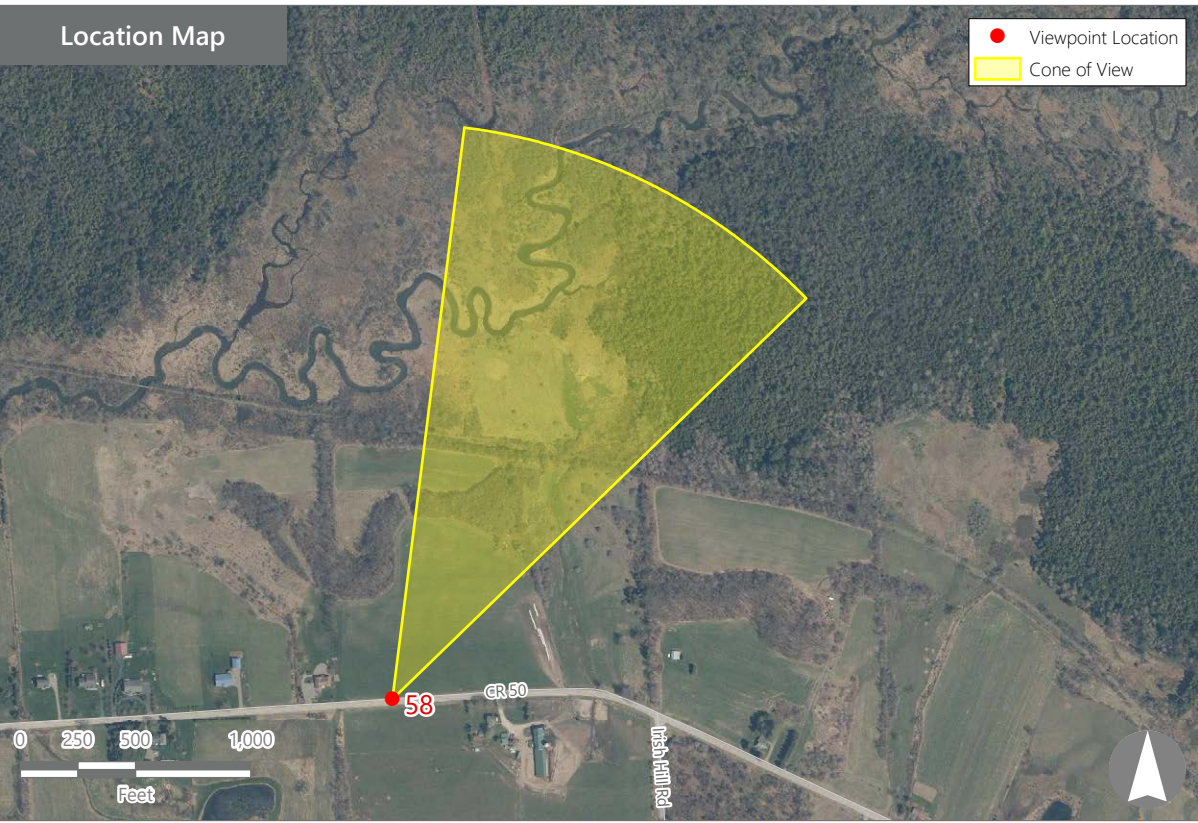
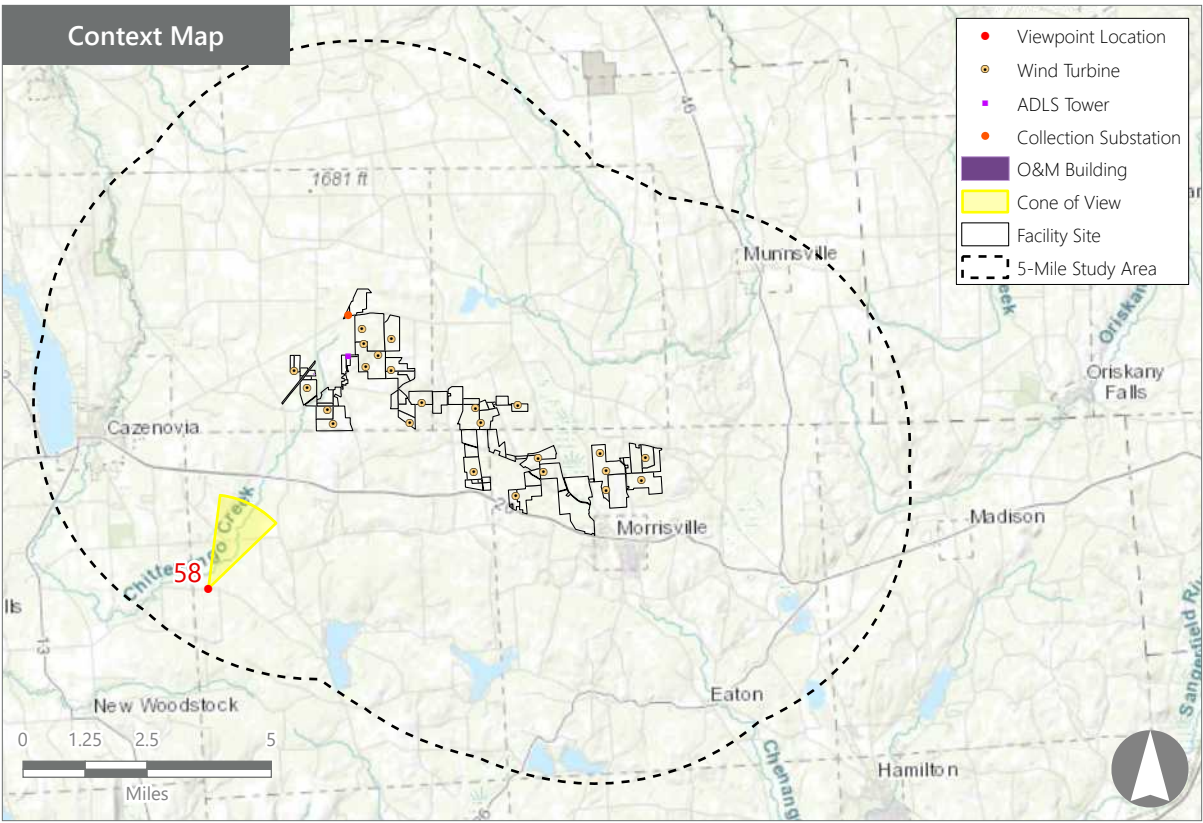
PHOTOGRAPH INFORMATION

Date: August 31, 2023
Time: 5:13 PM
Camera: Canon EOS 5D Mark IV
Resolution: 24 Megapixels
Lens Focal Length (35mm equivalent): 50 mm
Camera Elevation: 1,471 feet
Field of View: 39 degrees
Direction of View: North-northeast
Printed Size: 10" x 15"
Viewing Distance:** 21"

NOTES

*Distance as measured from the viewpoint to the closest wind turbine generator within the simulated photograph's field of view

**The simulation is at the correct perspective when printed on an 11 inch by 17 inch sheet at full scale, and viewed approximately 21 inches from the eye of the viewer.



Hoffman Falls Wind Project

Towns of Eaton, Fenner, Nelson, and Smithfield, Madison County, New York

Visual Impact Assessment
Appendix 8-A

Viewpoint Sensitivity¹:

Scenic Quality:

- ☐ Low
- ☒ Moderate
- ☒ High

Viewer Exposure

Frequency:

- ☒ Rare
- ☒ Occasional
- ☒ Regular/Repeated

Duration of View:

- ☒ Short/Brief/Fleeting
- ☐ Moderate
- ☒ Long

¹Viewpoint Sensitivity information is gathered from rating panel results. Scenic Quality is an average based on Low = 1, Moderate = 2, High = 3. Viewer Exposure reflects all those selected by the review panel.

Contrast Rating Scores²:

| Component | Score | Contrast Rating |
|-----------------|---------|------------------|
| | Install | |
| Landform | 1.5 | Minimal/Moderate |
| Vegetation | 1.2 | Minimal |
| Land Use | 1.5 | Minimal/Moderate |
| Water | N/A | N/A |
| Sky | 1.3 | Minimal/Moderate |
| Viewer Activity | 1.5 | Minimal/Moderate |
| AVERAGE | 1.4 | Minimal/Moderate |

² Contrast Rating Scale: 0.0 - 0.2 (Insignificant), 0.3 - 0.7 (Insignificant/Minimal), 0.8 - 1.2 (Minimal), 1.3 - 1.7 (Minimal/Moderate), 1.8 - 2.2 (Moderate), 2.3 - 2.7 (Moderate/Appreciable), 2.8 - 3.2 (Appreciable) 3.3 - 3.7 Appreciable/Strong), 3.8 - 4.0 (Strong).

Contrast Rating - Lowest and Highest Scores:

| Post - Install | | |
|-----------------|-------|------|
| Component | Score | |
| | Low | High |
| Landform | 1.5 | 1.5 |
| Vegetation | 1.0 | 1.5 |
| Land Use | 1.0 | 2.5 |
| Water | NA | NA |
| Sky | 1.0 | 2.0 |
| Viewer Activity | 1.0 | 2.5 |

Existing View



Proposed View (Post Installation)



Existing View

Viewpoint 58 is located on Hardscrabble Road in the Town of Nelson, approximately 4.2 miles from the nearest proposed wind turbine that would be visible in the selected photo's field of view. This relatively high elevation viewpoint occurs in the Agricultural/Rural Residential LSZ but overlooks an area characterized by more abundant woody vegetation. Typical viewers at this location would be local residents and through-travelers. In the selected view to the north-northeast, a wire fence with weathered wooden posts is present in the foreground but is barely perceptible against the verdant green hayfield located behind it. The hayfield slopes downward toward thick and lush woods that obscure the lower elevations in the middle ground. Above the middle ground tree line, darker rolling hills are seen against a light blue open sky. The distant hills are largely covered with trees and are lightly shrouded in haze. There are discrete patches of agricultural fields with distant agricultural structures visible upon close examination. At least three existing wind turbines are visible against the horizon. However, the light color of the turbines, their distance from the viewer, and the atmospheric conditions reduce their visibility and make them perceptible only upon extended viewing.

Proposed View

With the proposed Project in place, multiple wind turbines are visible on and behind the background hills. The new turbines blend well with the background sky, but the shadow of the reverse face of the turbine blades make them more visible than the existing more distant turbines. The closer location of the new turbines to the viewer also reduces the obscuring properties of the background haze. The new turbines do not significantly change the open agricultural character of the view, but the layering of distant and nearby turbines increases visual clutter above the near and distant tree lines. According to the rating panel, scenic quality of this view with the Project in place may be minimally reduced but would remain high resulting in minimal to moderate contrast.

Hoffman Falls Wind Project

Towns of Eaton, Fenner, Nelson, and Smithfield, Madison County, New York

EXISTING VIEW



Note: Printed at actual size, the existing view image is 15 inches wide by 10 inches high. At this size and focal length, the existing view image should be viewed from a distance 21 inches from the eye of the viewer.



VIEWPOINT 58
Hardscrabble Road

Hoffman Falls Wind Project
Towns of Eaton, Fenner, Nelson, and Smithfield, Madison County, New York





Note: Printed at actual size, the resulting simulation image is 15 inches wide by 10 inches high. At this size and focal length, the simulation should be viewed from a distance 21 inches from the eye of the viewer.

0 1in 2 in
This scale is designed to insure the simulation images are printed at the intended size.

VIEWPOINT 58
Hardscrabble Road

Hoffman Falls Wind Project
Towns of Eaton, Fenner, Nelson, and Smithfield, Madison County, New York





Note: The image above is a panorama photograph taken from Cazenovia Art Park in the Town of Cazenovia panning clockwise from north (left) to southeast (right). The green rectangle represents the extent of the simulated photograph.

VIEWPOINT 60
Cazenovia Art Park

VIEWPOINT INFORMATION

Location: Cazenovia Art Park
Town: Cazenovia
County: Madison
Latitude: 42.91162° N
Longitude: 75.83416° W

LOCATION INFORMATION

Distance Zone Represented in View: Background
Viewer Distance*: 4.0 miles
Landscape Similarity Zone: Agricultural/Rural
Residential
Viewer/User Group(s): Local Residents, Tourists/
Recreational Users

Visually Sensitive Resource(s): Erie Canalway
National Heritage Corridor, Stone Quarry Hill Art
Park, Dorothy Riester House & Studio

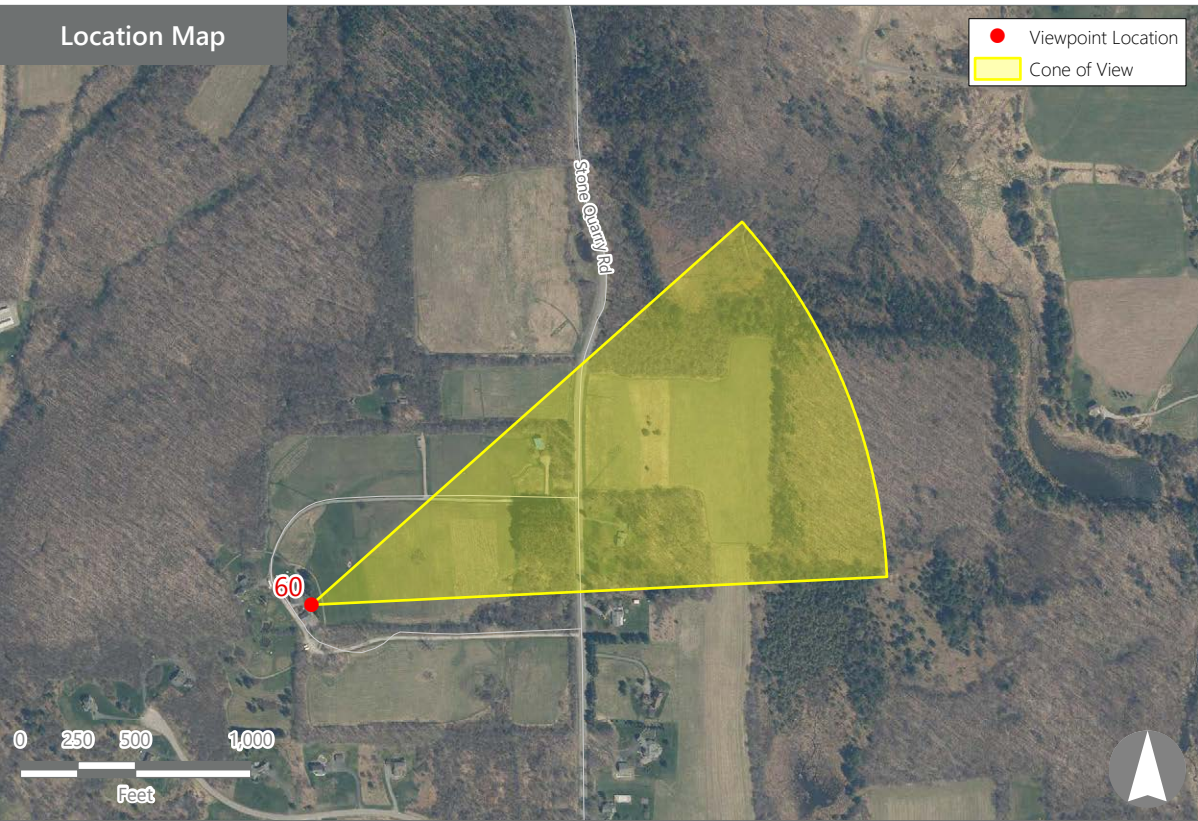
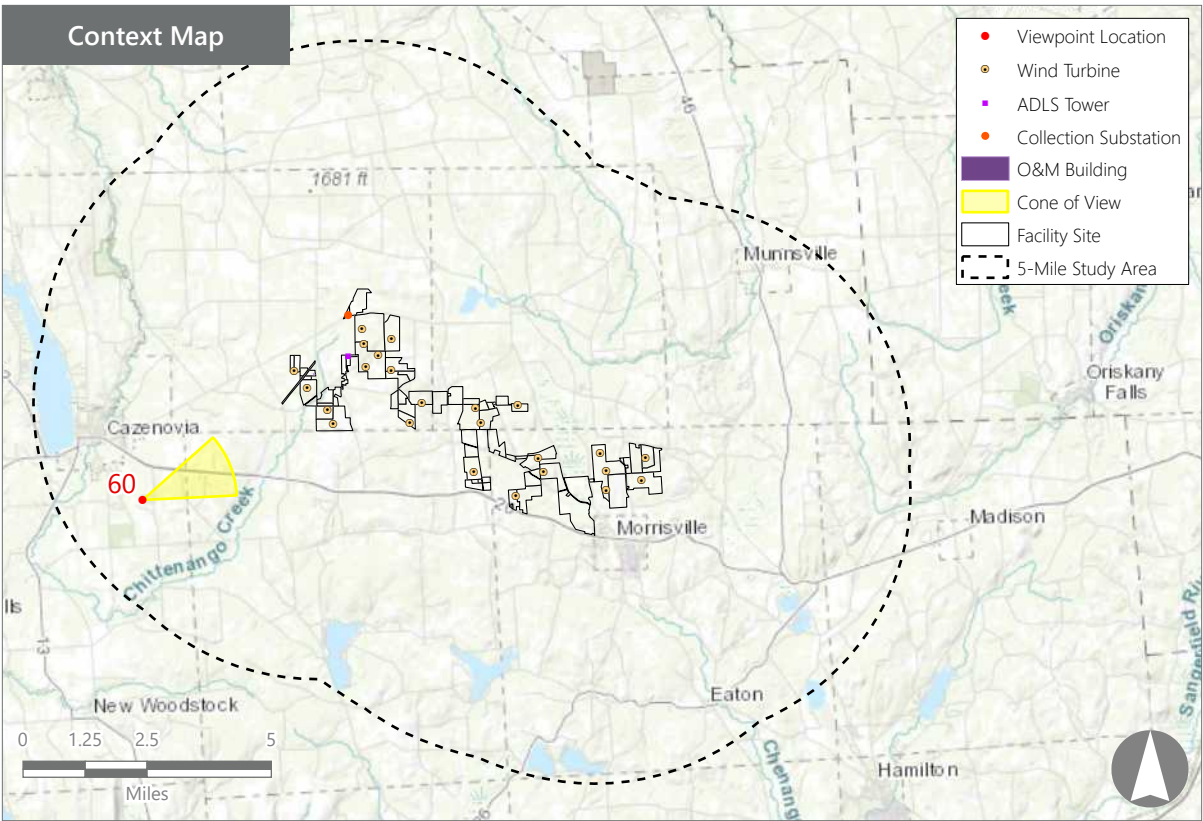
PHOTOGRAPH INFORMATION

Date: August 31, 2023
Time: 5:24 PM
Camera: Canon EOS 5D Mark IV
Resolution: 24 Megapixels
Lens Focal Length (35mm equivalent): 50 mm
Camera Elevation: 1,612 feet
Field of View: 39 degrees
Direction of View: East-northeast
Printed Size: 10" x 15"
Viewing Distance:** 21"

NOTES

*Distance as measured from the viewpoint to the closest wind turbine generator within the simulated photograph's field of view

**The simulation is at the correct perspective when printed on an 11 inch by 17 inch sheet at full scale, and viewed approximately 21 inches from the eye of the viewer.



Hoffman Falls Wind Project

Towns of Eaton, Fenner, Nelson, and Smithfield, Madison County, New York

Visual Impact Assessment
Appendix 8-A

Viewpoint Sensitivity¹:

Scenic Quality:

- ☐ Low
- ☒ Moderate
- ☒ High

Viewer Exposure

Frequency:

- ☐ Rare
- ☐ Occasional
- ☒ Regular/Repeated

Duration of View:

- ☐ Short/Brief/Fleeting
- ☒ Moderate
- ☒ Long

¹Viewpoint Sensitivity information is gathered from rating panel results. Scenic Quality is an average based on Low = 1, Moderate = 2, High = 3. Viewer Exposure reflects all those selected be the review panel.

Contrast Rating Scores²:

| Component | Score | Contrast Rating |
|-----------------|---------|------------------|
| | Install | |
| Landform | 0.8 | Minimal |
| Vegetation | 1.0 | Minimal |
| Land Use | 1.0 | Minimal |
| Water | N/A | N/A |
| Sky | 1.2 | Minimal |
| Viewer Activity | 1.3 | Minimal/Moderate |
| AVERAGE | 1.1 | Minimal |

² Contrast Rating Scale: 0.0 - 0.2 (Insignificant), 0.3 – 0.7 (Insignificant/Minimal), 0.8 – 1.2 (Minimal), 1.3 – 1.7 (Minimal/Moderate), 1.8 - 2.2 (Moderate), 2.3 – 2.7 (Moderate/Appreciable), 2.8 – 3.2 (Appreciable) 3.3 – 3.7 Appreciable/Strong), 3.8 – 4.0 (Strong).

Contrast Rating - Lowest and Highest Scores:

| Post - Install | | |
|-----------------|-------|------|
| Component | Score | |
| | Low | High |
| Landform | 0.5 | 1.0 |
| Vegetation | 0.5 | 1.5 |
| Land Use | 0.5 | 1.5 |
| Water | NA | NA |
| Sky | 1.0 | 1.5 |
| Viewer Activity | 1.0 | 2.0 |

Existing View



Proposed View (Post Installation)



Existing View

Viewpoint 60 is located in Cazenovia Art Park in the Town of Cazenovia, approximately 4 miles from the nearest proposed wind turbine that would be visible in the selected photo's field of view. This viewpoint occurs in an outdoor sculpture garden located within the Agricultural/Rural Residential LSZ. Typical viewers at this location would be local residents and tourists/recreational users visiting the park to view sculptures placed within a park-like setting. In the existing view to the east-northeast, several sculptures are present, but just outside the selected photo's field of view. The selected view is from a slightly elevated section of mown lawn that descends gently downward to brownish-green meadow that is broken by a mown pathway and patches of scrubby vegetation. The pathway traverses the middle ground and passes through a stone wall before disappearing into verdant forestland. The Dorothy Riester House & Studio, a dark gray gabled frame building, occurs within the tree line at the far side of the meadow, and serves as a focal point that draws the viewer's eye to the left. As they extend into the background, the trees are layered with a near line and a far line beginning at the center of the view. The far tree line is at a lower elevation and allows for more distant views. Distant views are still wooded but are broken by the roofs of buildings. A distant water tower with a blue hue provides an additional focal point that draws the viewer attention to the forested horizon line. The sky beyond the horizon is clear and blue. The view has a park-like character in a wooded rural setting and is considered to have high scenic quality.

Proposed View

With the proposed Project in place, a line of wind turbines is now visible above the forested horizon line on the left. The extent of turbine visibility is variable, with some largely unobstructed and others partially screened by the background ridgeline. Turbines in the right half of the view are largely obscured by the nearer tree line. Distance from the viewer minimizes the turbines' scale contrast, and their white color results in relatively minor color contrast with the sky. However, their presence along the formerly open horizon line and the dark shadows on the near face of the turbine blades increases their visibility. Although they occur in a portion of the view that already features buildings and a water tower, the turbines add visual clutter and introduce new vertical man-made features to a largely forested landscape. The wind turbines and the movement of the blades may become new focal points in the view but are far enough away that they are unlikely to draw viewer attention away from sculptures within the park. According to the rating panel, scenic quality of this view with the Project in place remains high and the contrast introduced is anticipated to be minimal.

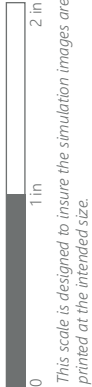
Hoffman Falls Wind Project

Towns of Eaton, Fenner, Nelson, and Smithfield, Madison County, New York

EXISTING VIEW



Note: Printed at actual size, the existing view image is 15 inches wide by 10 inches high. At this size and focal length, the existing view image should be viewed from a distance 21 inches from the eye of the viewer.



VIEWPOINT 60
Cazenovia Art Park

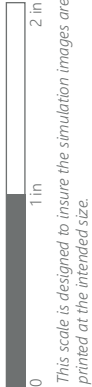
Hoffman Falls Wind Project
Towns of Eaton, Fenner, Nelson, and Smithfield, Madison County, New York



PHOTOSIMULATION



Note: Printed at actual size, the resulting simulation image is 15 inches wide by 10 inches high. At this size and focal length, the simulation should be viewed from a distance 21 inches from the eye of the viewer.



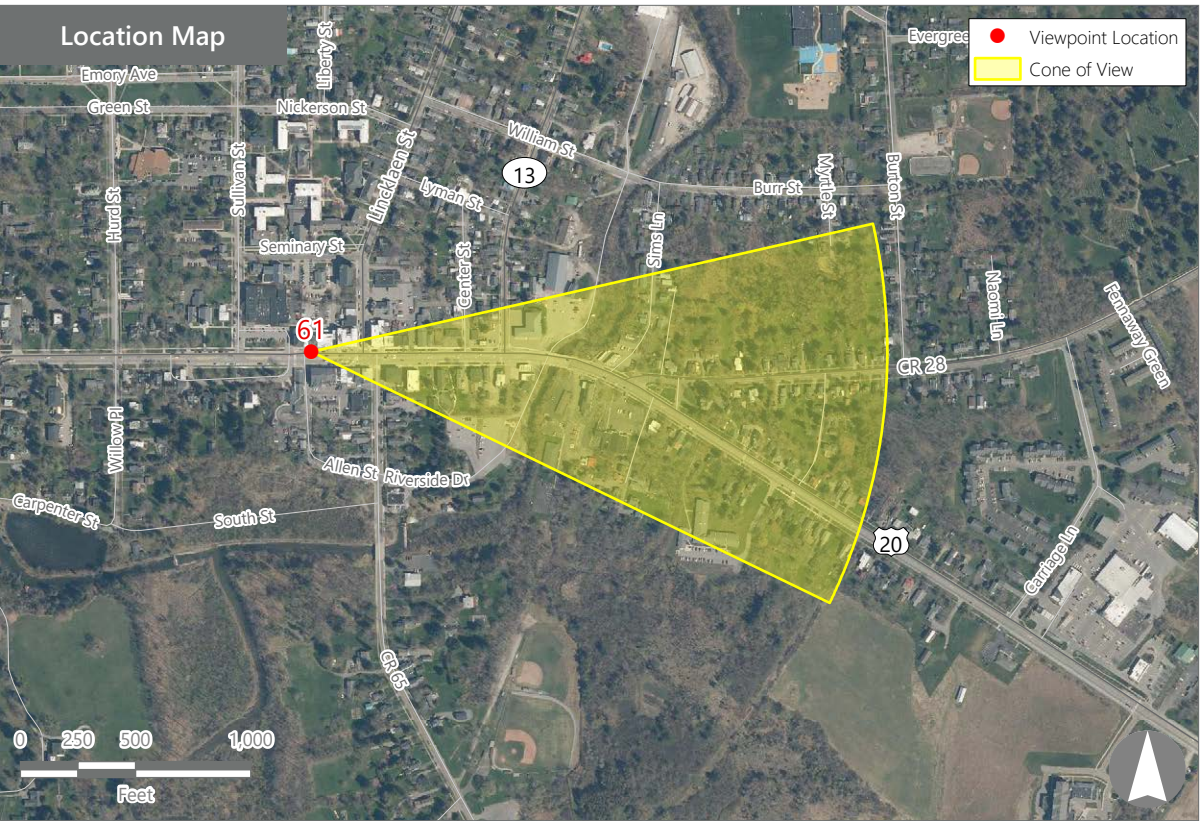
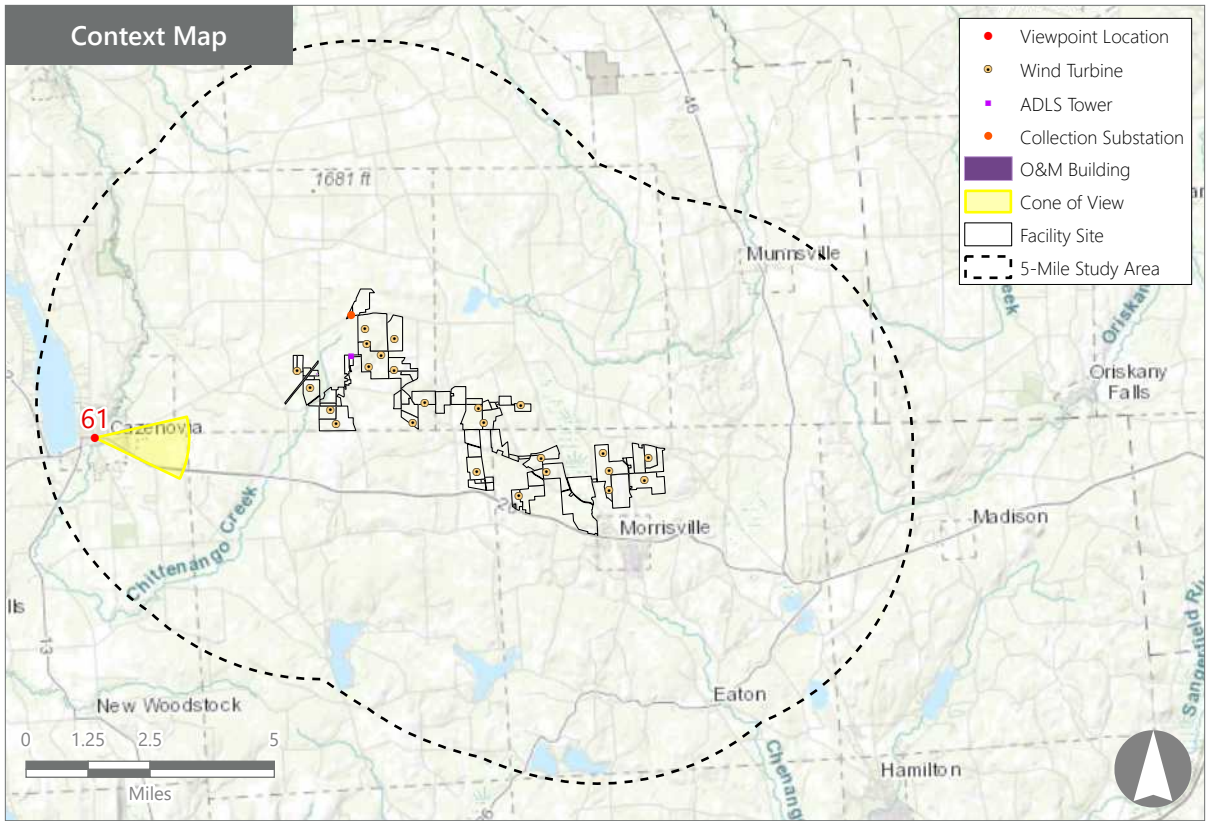
VIEWPOINT 60
Cazenovia Art Park

Hoffman Falls Wind Project
Towns of Eaton, Fenner, Nelson, and Smithfield, Madison County, New York





Note: The image above is a panorama photograph taken from US Route 20 in the Town of Cazenovia panning clockwise from northeast (left) to southeast (right). The green rectangle represents the extent of the simulated photograph.



VIEWPOINT 61

US Route 20

VIEWPOINT INFORMATION

Location: US Route 20

Town: Cazenovia

County: Madison

Latitude: 42.92994° N

Longitude: 75.85404° W

LOCATION INFORMATION

Distance Zone Represented in View: Background

Viewer Distance*: 4.5 miles

Landscape Similarity Zone: Village

Viewer/User Group(s): Local Residents, Tourists/
Recreational Users, Through-Travelers

Visually Sensitive Resource(s): Scenic Route 20,
US Route 20, Memorial Park, Erie Canalway National
Heritage Corridor, Albany Street Historic District,
Cazenovia Village Historic District,
Village of Cazenovia

PHOTOGRAPH INFORMATION

Date: August 31, 2023

Time: 5:35 PM

Camera: Canon EOS 5D Mark IV

Resolution: 24 Megapixels

Lens Focal Length (35mm equivalent): 50 mm

Camera Elevation: 1,230 feet

Field of View: 39 degrees

Direction of View: East

Printed Size: 10" x 15"

Viewing Distance:** 21"

NOTES

*Distance as measured from the viewpoint to the
closest wind turbine generator within the simulated
photograph's field of view

**The simulation is at the correct perspective when
printed on an 11 inch by 17 inch sheet at full scale,
and viewed approximately 21 inches from the eye of
the viewer.

Hoffman Falls Wind Project

Towns of Eaton, Fenner, Nelson, and Smithfield, Madison County, New York

Visual Impact Assessment
Appendix 8-A

EXISTING VIEW



Note: Printed at actual size, the existing view image is 15 inches wide by 10 inches high. At this size and focal length, the existing view image should be viewed from a distance 21 inches from the eye of the viewer.



VIEWPOINT 61
US Route 20

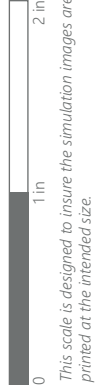
Hoffman Falls Wind Project
Towns of Eaton, Fenner, Nelson, and Smithfield, Madison County, New York



WIREFRAME RENDERING



Note: Printed at actual size, the resulting simulation image is 15 inches wide by 10 inches high. At this size and focal length, the simulation should be viewed from a distance 21 inches from the eye of the viewer.



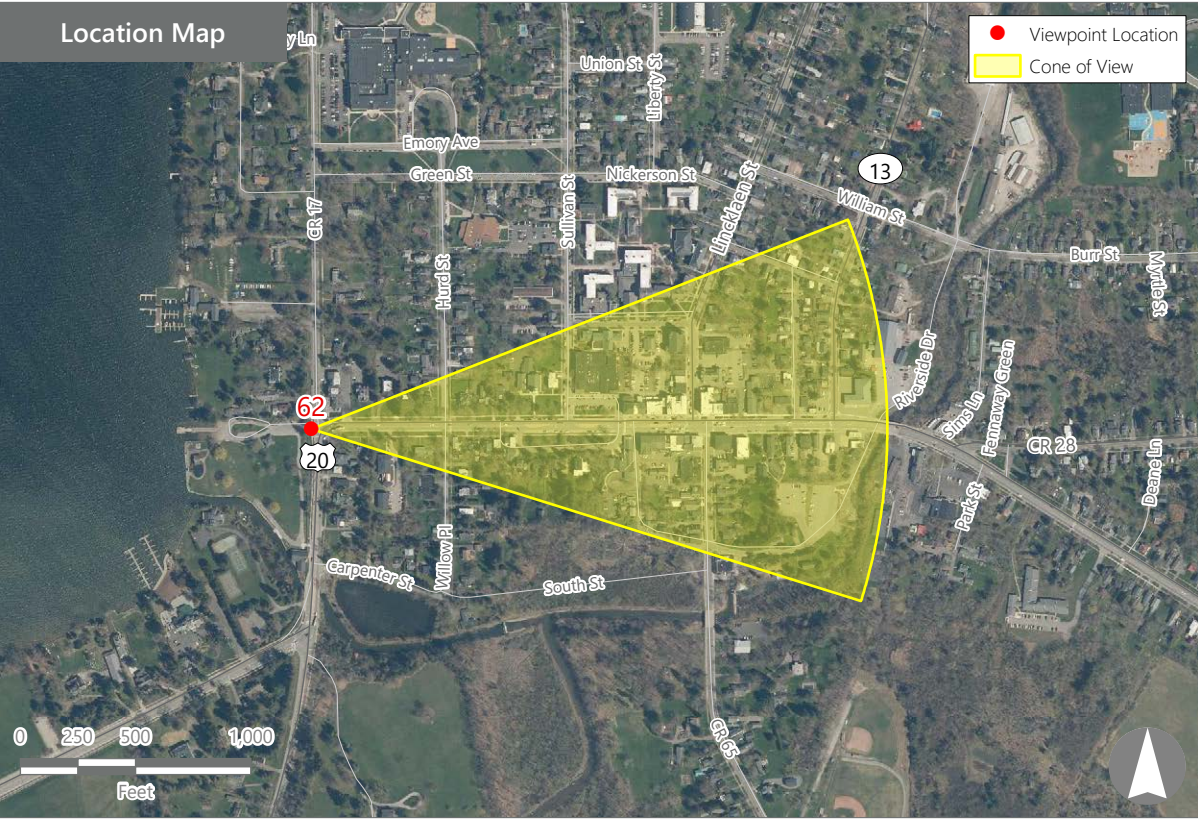
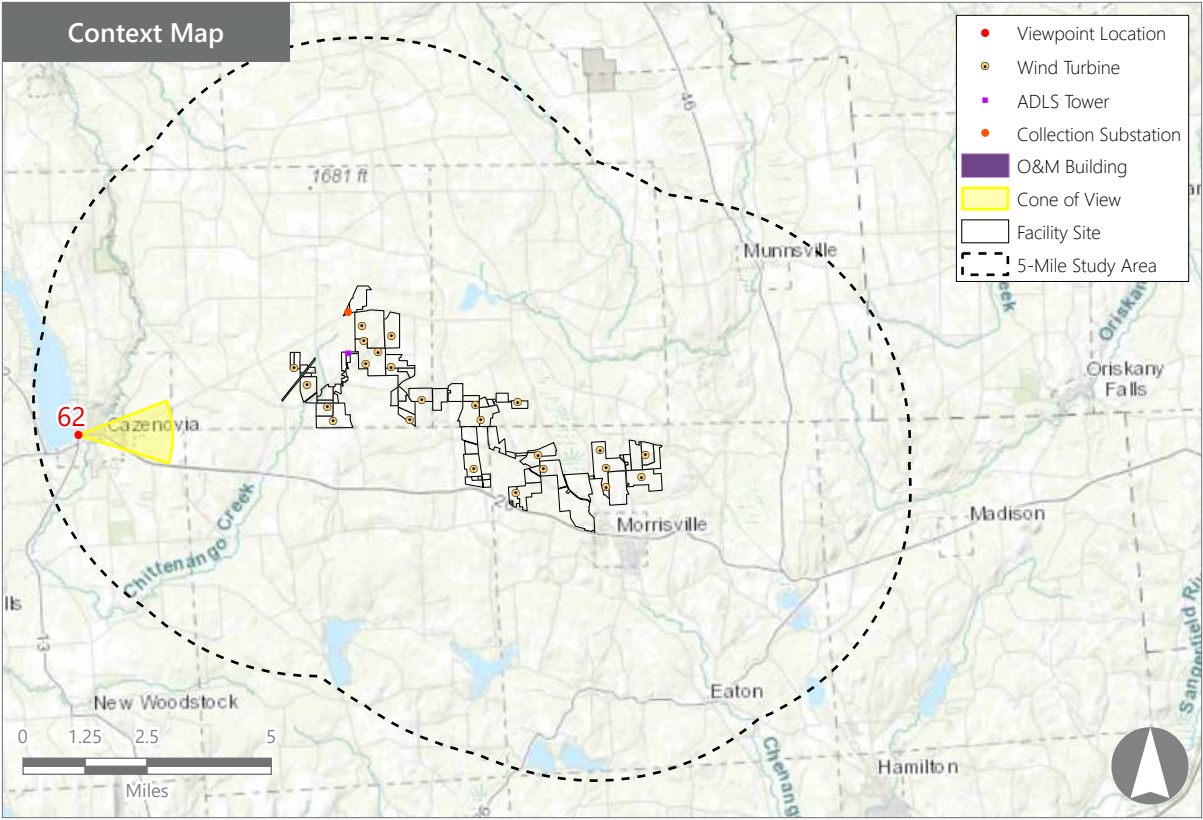
VIEWPOINT 61
US Route 20

Hoffman Falls Wind Project
Towns of Eaton, Fenner, Nelson, and Smithfield, Madison County, New York





Note: The image above is a panorama photograph taken from US Route 20 in the Town of Cazenovia panning clockwise from northeast (left) to southeast (right). The green rectangle represents the extent of the simulated photograph.



Hoffman Falls Wind Project

Towns of Eaton, Fenner, Nelson, and Smithfield, Madison County, New York

Visual Impact Assessment
Appendix 8-A

EDR

VIEWPOINT 62

US Route 20

VIEWPOINT INFORMATION

Location: US Route 20

Town: Cazenovia

County: Madison

Latitude: 42.92985° N

Longitude: 75.85939° W

LOCATION INFORMATION

Distance Zone Represented in View: Background

Viewer Distance*: 4.6 miles

Landscape Similarity Zone: Water

Viewer/User Group(s): Local Residents, Tourists/

Recreational Users, Through-Travelers

Visually Sensitive Resource(s): Scenic Route 20, US Route 20, Hill 'n Valley, Bike Hike Cazenovia Lake, Bicentennial Architectural Trail, Magnificent Madison, Village of Cazenovia, Albany Street Historic District, Cazenovia Village Historic District, Lakeland Park, Erie Canalway National Heritage Corridor

PHOTOGRAPH INFORMATION

Date: August 31, 2023

Time: 5:39 PM

Camera: Canon EOS 5D Mark IV

Resolution: 24 Megapixels

Lens Focal Length (35mm equivalent): 50 mm

Camera Elevation: 1,210 feet

Field of View: 39 degrees

Direction of View: East

Printed Size: 10" x 15"

Viewing Distance:** 21"

NOTES

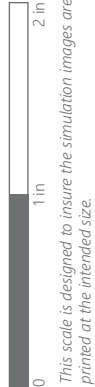
*Distance as measured from the viewpoint to the closest wind turbine generator within the simulated photograph's field of view

**The simulation is at the correct perspective when printed on an 11 inch by 17 inch sheet at full scale, and viewed approximately 21 inches from the eye of the viewer.



EXISTING VIEW

Note: Printed at actual size, the existing view image is 15 inches wide by 10 inches high. At this size and focal length, the existing view image should be viewed from a distance 21 inches from the eye of the viewer.



VIEWPOINT 62
US Route 20

Hoffman Falls Wind Project
Towns of Eaton, Fenner, Nelson, and Smithfield, Madison County, New York

