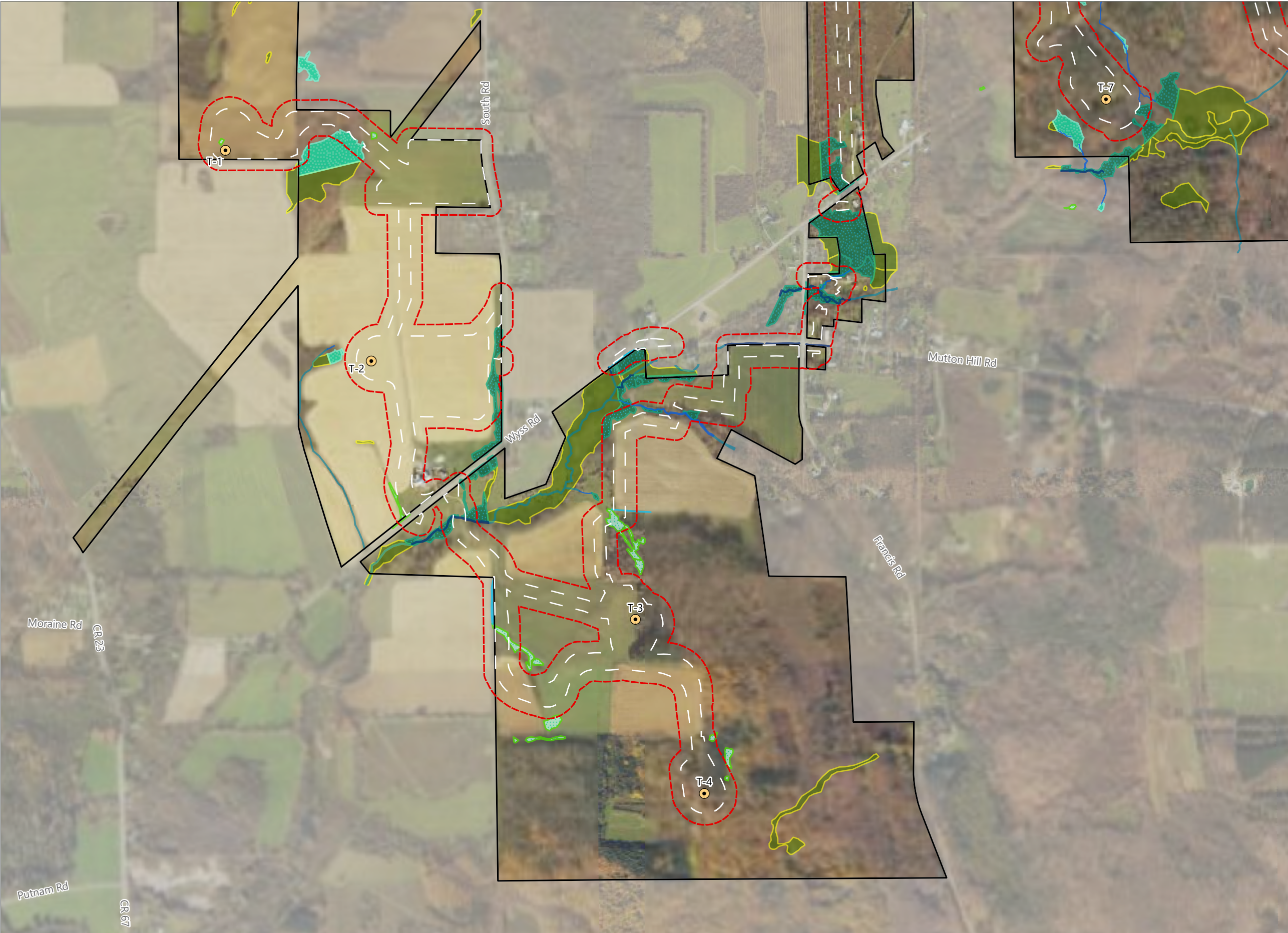


Figure 14-1. Delineated Wetlands and Streams - Revision 2



Hoffman Falls Wind

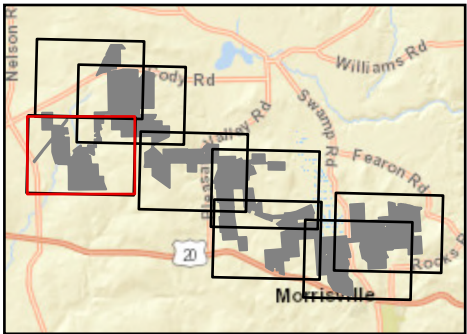
Towns of Eaton, Fenner, Nelson and
Smithfield, Madison County,
New York

**Section 94-c Second Supplement
Matter No. 23-0038**

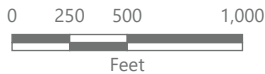
- Delineated Stream Non-jurisdictional
- Delineated Stream w/
Federal Jurisdiction
- Delineated Stream w/
State & Federal Jurisdiction
- Delineated wetland Non-jurisdictional
- Delineated Wetland w/
Federal Jurisdiction
- Delineated Wetland w/
State & Federal Jurisdiction
- Approximate Stream
- Approximate Wetland

Facility Components

- Wind Turbine
- Limit of Disturbance
- Facility Site
- Wetland Study Area



Sheet 1 of 8



Prepared August 27, 2024
Basemap: USDA NAIP "2023 New York 60cm"

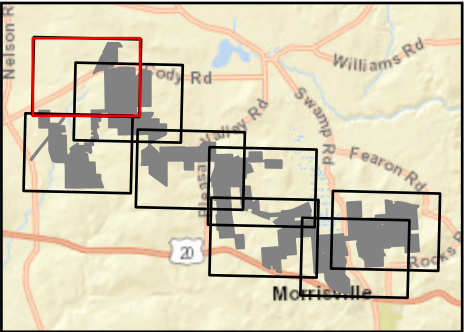


Hoffman Falls Wind

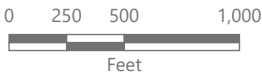
Towns of Eaton, Fenner, Nelson and
Smithfield, Madison County,
New York

**Section 94-c Second Supplement
Matter No. 23-0038**

- Delineated Stream Non-jurisdictional
- Delineated Stream w/
Federal Jurisdiction
- Delineated wetland Non-jurisdictional
- Delineated Wetland w/
Federal Jurisdiction
- Delineated Wetland w/
State & Federal Jurisdiction
- Approximate Stream
- Approximate Wetland
- Facility Components
 - Wind Turbine
 - Limit of Disturbance
 - Facility Site
 - Wetland Study Area

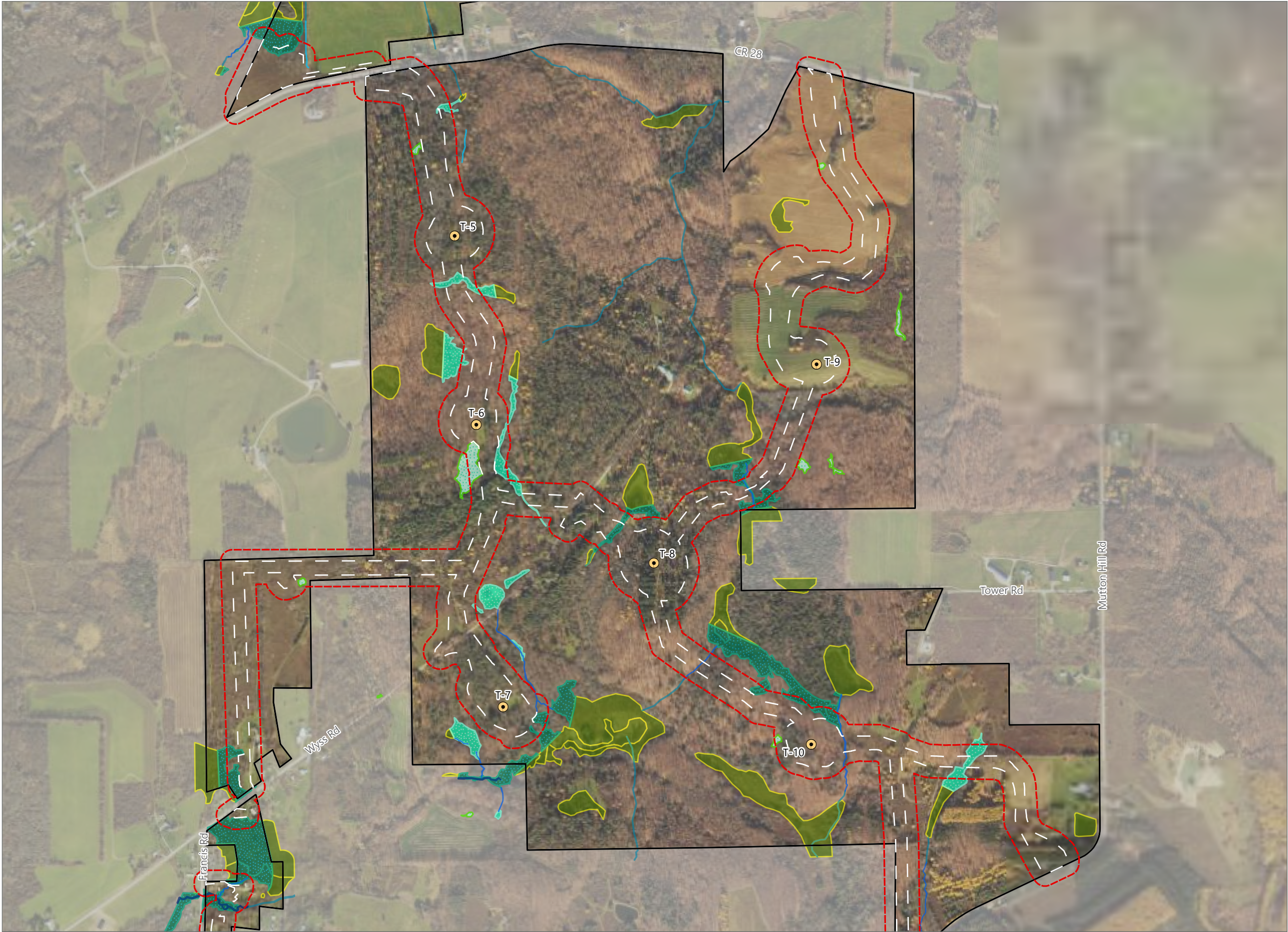


Sheet 2 of 8



Prepared August 27, 2024
Basemap: USDA NAIP "2023 New York 60cm"

Figure 14-1. Delineated Wetlands and Streams - Revision 2



Hoffman Falls Wind

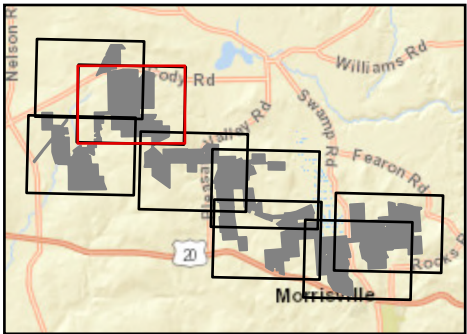
Towns of Eaton, Fenner, Nelson and
Smithfield, Madison County,
New York

**Section 94-c Second Supplement
Matter No. 23-0038**

- Delineated Stream Non-jurisdictional
- Delineated Stream w/
Federal Jurisdiction
- Delineated Stream w/
State & Federal Jurisdiction
- Delineated wetland Non-jurisdictional
- Delineated Wetland w/
Federal Jurisdiction
- Delineated Wetland w/
State & Federal Jurisdiction
- Approximate Stream
- Approximate Wetland

Facility Components

- Wind Turbine
- Limit of Disturbance
- Facility Site
- Wetland Study Area



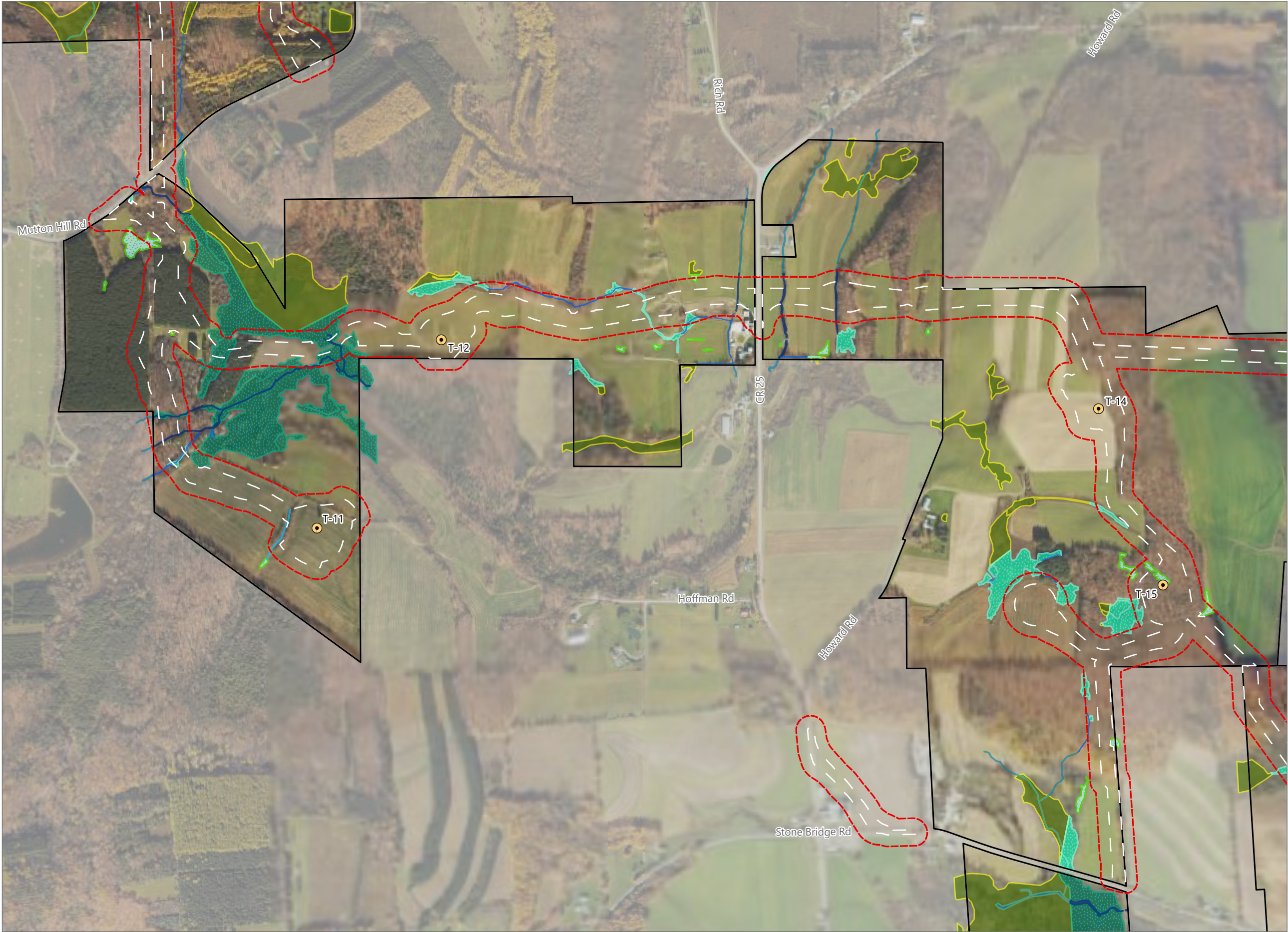
Sheet 3 of 8



0 250 500 1,000
Feet

Prepared August 27, 2024
Basemap: USDA NAIP "2023 New York 60cm"

Figure 14-1. Delineated Wetlands and Streams - Revision 2



Hoffman Falls Wind

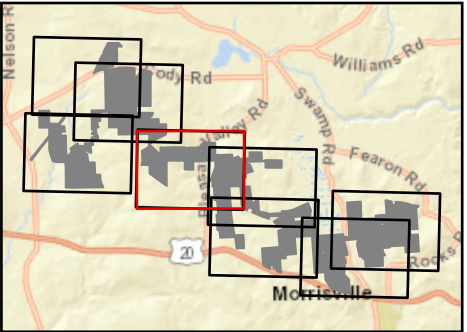
Towns of Eaton, Fenner, Nelson and
Smithfield, Madison County,
New York

**Section 94-c Second Supplement
Matter No. 23-0038**

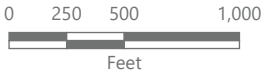
- Delineated Stream Non-jurisdictional
- Delineated Stream w/
Federal Jurisdiction
- Delineated Stream w/
State & Federal Jurisdiction
- Delineated wetland Non-jurisdictional
- Delineated Wetland w/
Federal Jurisdiction
- Delineated Wetland w/
State & Federal Jurisdiction
- Approximate Stream
- Approximate Wetland

Facility Components

- Wind Turbine
- Limit of Disturbance
- Facility Site
- Wetland Study Area

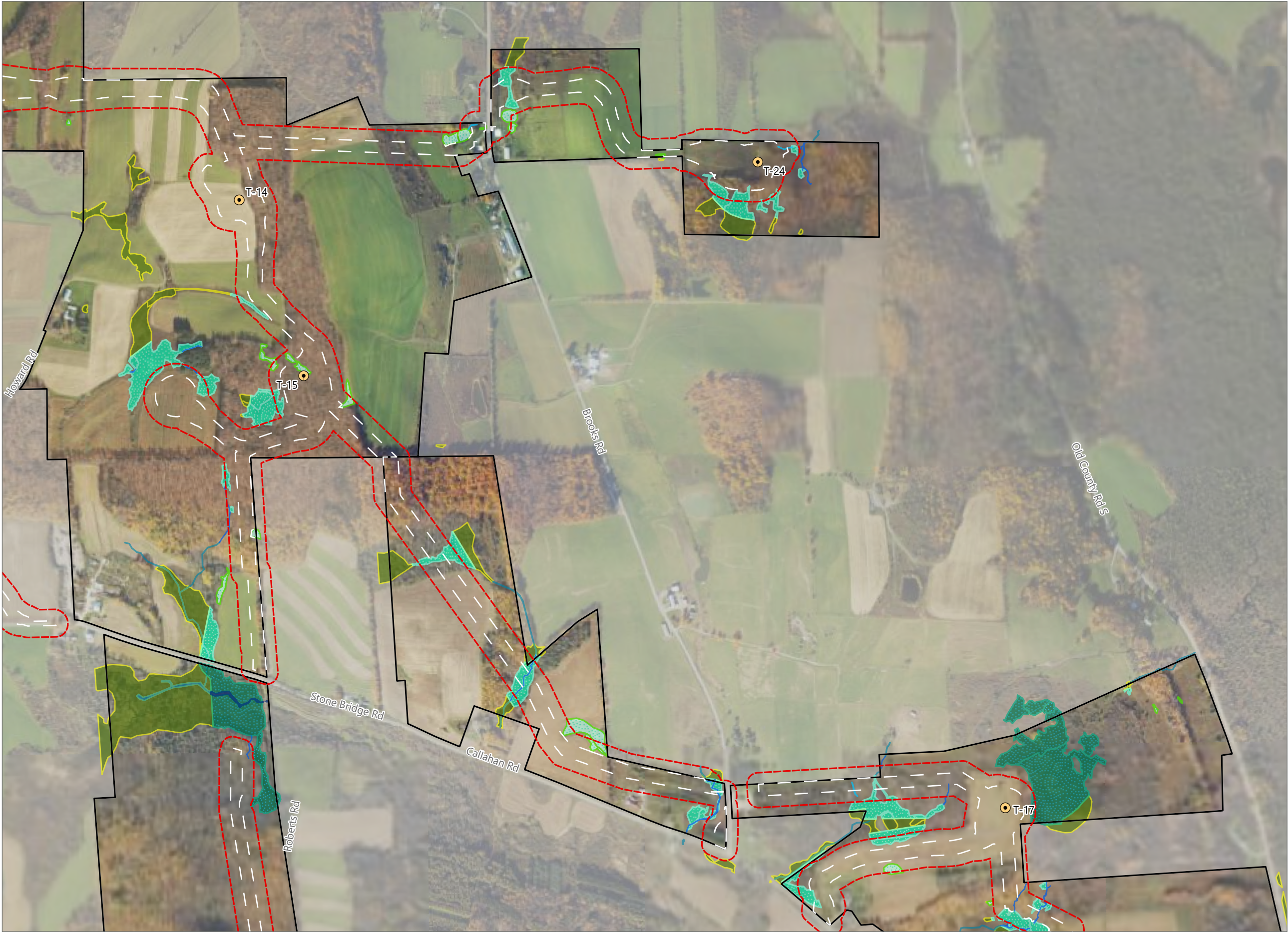


Sheet 4 of 8



Prepared August 27, 2024
Basemap: USDA NAIP "2023 New York 60cm"

Figure 14-1. Delineated Wetlands and Streams - Revision 2



Hoffman Falls Wind

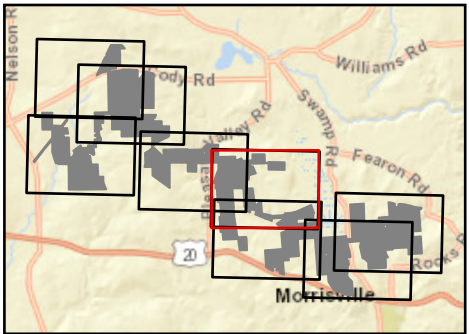
Towns of Eaton, Fenner, Nelson and
Smithfield, Madison County,
New York

**Section 94-c Second Supplement
Matter No. 23-0038**

- Delineated Stream Non-jurisdictional
- Delineated Stream w/
Federal Jurisdiction
- Delineated Stream w/
State & Federal Jurisdiction
- Delineated wetland Non-jurisdictional
- Delineated Wetland w/
Federal Jurisdiction
- Delineated Wetland w/
State & Federal Jurisdiction
- Approximate Stream
- Approximate Wetland

Facility Components

- Wind Turbine
- Limit of Disturbance
- Facility Site
- Wetland Study Area



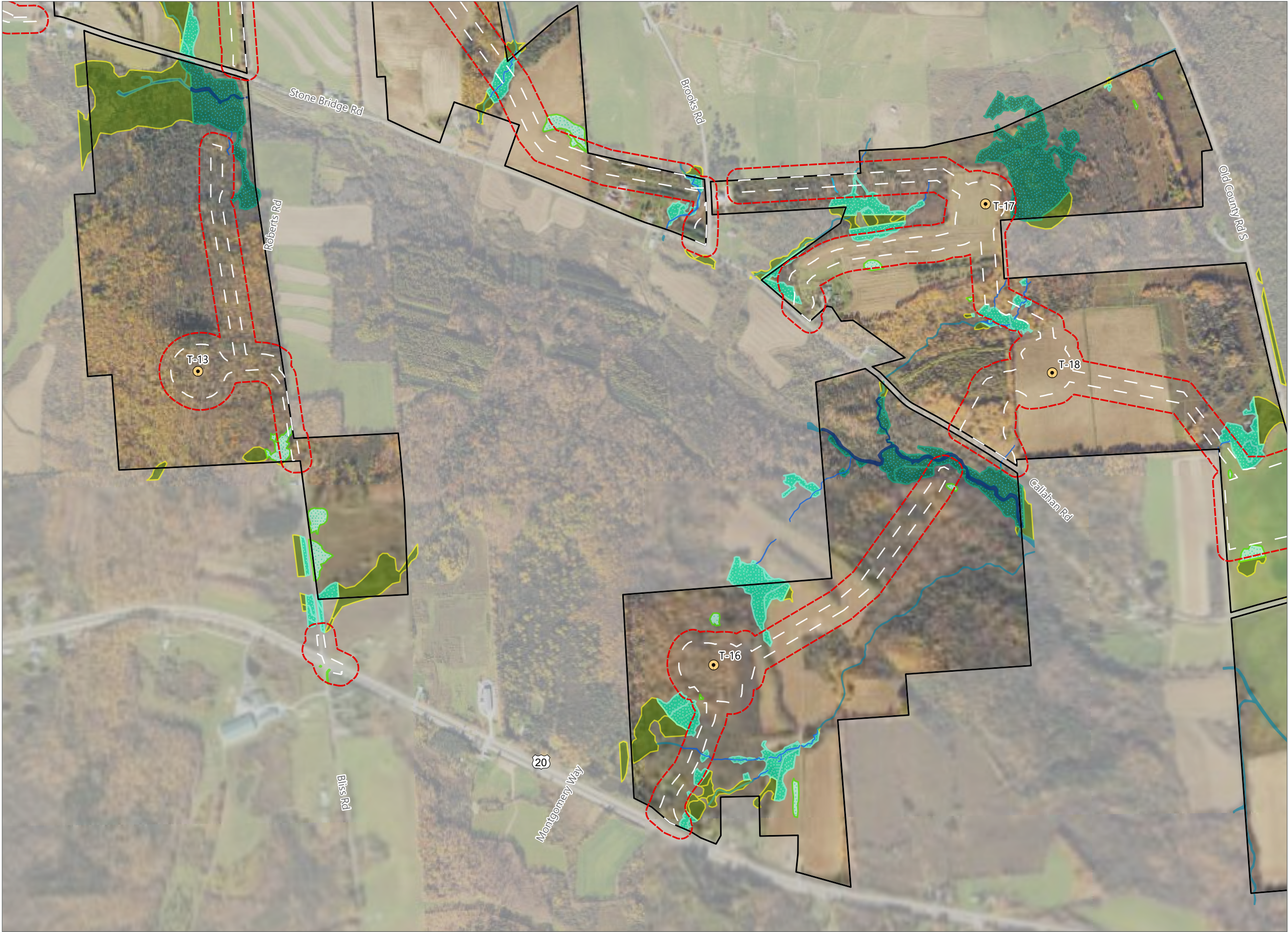
Sheet 5 of 8



0 250 500 1,000
Feet

Prepared August 27, 2024
Basemap: USDA NAIP "2023 New York 60cm"

Figure 14-1. Delineated Wetlands and Streams - Revision 2

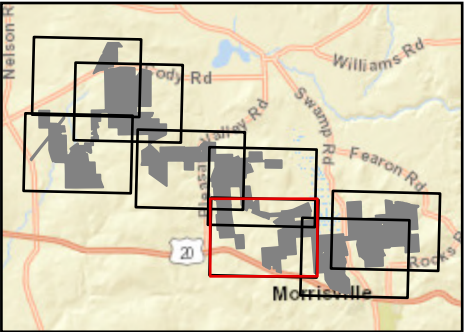


Hoffman Falls Wind

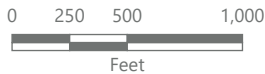
Towns of Eaton, Fenner, Nelson and
Smithfield, Madison County,
New York

**Section 94-c Second Supplement
Matter No. 23-0038**

- Delineated Stream Non-jurisdictional
- Delineated Stream w/
Federal Jurisdiction
- Delineated Stream w/
State & Federal Jurisdiction
- Delineated wetland Non-jurisdictional
- Delineated Wetland w/
Federal Jurisdiction
- Delineated Wetland w/
State & Federal Jurisdiction
- Approximate Stream
- Approximate Wetland
- Facility Components
 - Wind Turbine
 - Limit of Disturbance
 - Facility Site
 - Wetland Study Area



Sheet 6 of 8



Prepared August 27, 2024
Basemap: USDA NAIP "2023 New York 60cm"

Figure 14-1. Delineated Wetlands and Streams - Revision 2

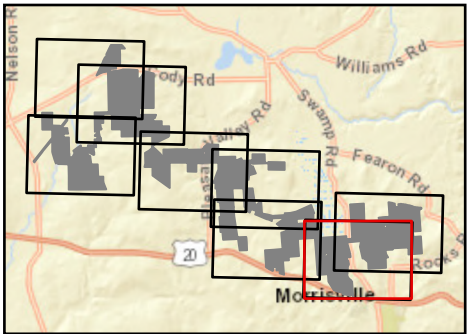


Hoffman Falls Wind

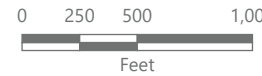
Towns of Eaton, Fenner, Nelson and
Smithfield, Madison County,
New York

**Section 94-c Second Supplement
Matter No. 23-0038**

- Delineated Stream Non-jurisdictional
 - Delineated Stream w/
Federal Jurisdiction
 - Delineated Stream w/
State & Federal Jurisdiction
 - Delineated wetland Non-jurisdictional
 - Delineated Wetland w/
Federal Jurisdiction
 - Delineated Wetland w/
State & Federal Jurisdiction
 - Approximate Stream
 - Approximate Wetland
- Facility Components
- Wind Turbine
 - Limit of Disturbance
 - Facility Site
 - Wetland Study Area



Sheet 7 of 8



Prepared August 27, 2024
Basemap: USDA NAIP "2023 New York 60cm"



Hoffman Falls Wind

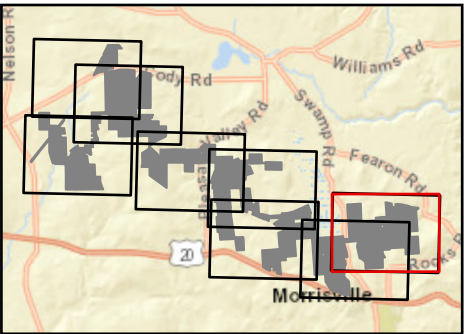
Towns of Eaton, Fenner, Nelson and
Smithfield, Madison County,
New York

**Section 94-c Second Supplement
Matter No. 23-0038**

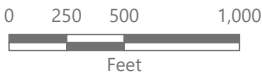
- Delineated Stream Non-jurisdictional
- Delineated Stream w/
Federal Jurisdiction
- Delineated Stream w/
State & Federal Jurisdiction
- Delineated wetland Non-jurisdictional
- Delineated Wetland w/
Federal Jurisdiction
- Delineated Wetland w/
State & Federal Jurisdiction
- Approximate Stream
- Approximate Wetland

Facility Components

- Wind Turbine
- Limit of Disturbance
- Facility Site
- Wetland Study Area



Sheet 8 of 8



Prepared August 27, 2024
Basemap: USDA NAIP "2023 New York 60cm"