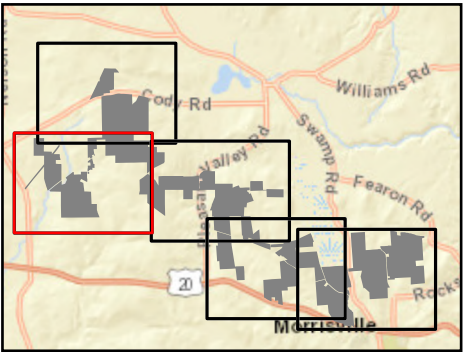


Hoffman Falls Wind

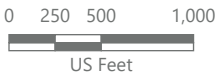
Towns of Eaton, Fenner, Nelson, and  
Smithfield, Madison County,  
New York

Facility Component

- Wind Turbine
- ADLS Tower
- Access Road
- Collection Line
- O&M Building
- Laydown Yard
- Limit of Disturbance
- Area within 500-Feet of Limit of Disturbance
- Magnetometer Survey Study Area
- Facility Site



Sheet 1 of 5



Prepared September 9, 2024  
Basemap: USDA NAIP "2022 New York 60cm" orthoimagery map service



Hoffman Falls Wind

Towns of Eaton, Fenner, Nelson, and  
Smithfield, Madison County,  
New York

- Anomaly
- ◆

Confirmed - Not Oil/Gas Well
- Facility Component
- Wind Turbine
- ▲

ADLS Tower
- Access Road
- - -

Collection Line
- ▭

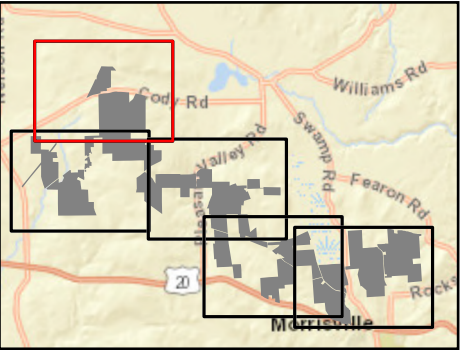
Collection Substation
- POI Substation
- - -

Limit of Disturbance
- ▨

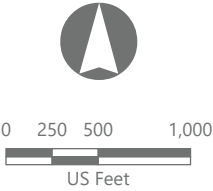
Area within 500-Feet  
of Limit of Disturbance
- - -

Magnetometer Survey Study Area
- ▭

Facility Site



Sheet 2 of 5



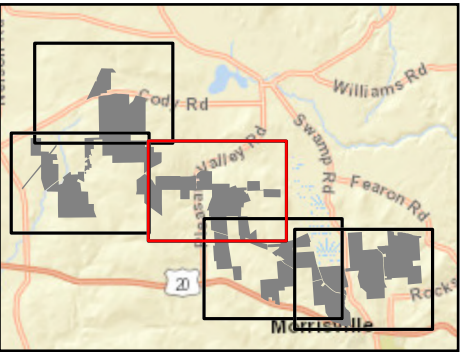
Prepared September 9, 2024  
Basemap: USDA NAIP "2022 New York 60cm" orthoimagery map  
service



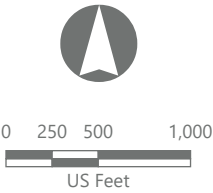
Hoffman Falls Wind

Towns of Eaton, Fenner, Nelson, and  
Smithfield, Madison County,  
New York

- Anomaly
- Confirmed - Not Oil/Gas Well
- Facility Component
- Wind Turbine
  - Permanent MET Tower
  - Access Road
  - Collection Line
  - Limit of Disturbance
  - Area within 500-Feet of Limit of Disturbance
  - Magnetometer Survey Study Area
  - Facility Site



Sheet 3 of 5



Prepared September 9, 2024  
Basemap: USDA NAIP "2022 New York 60cm" orthoimagery map service

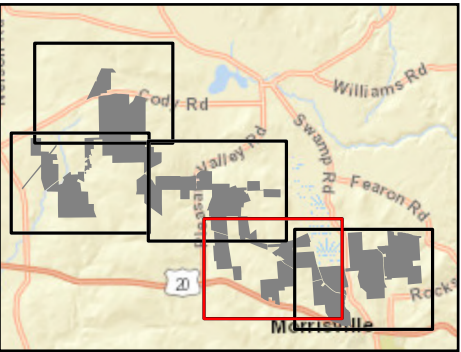


Hoffman Falls Wind

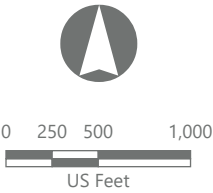
Towns of Eaton, Fenner, Nelson, and  
Smithfield, Madison County,  
New York

Facility Component

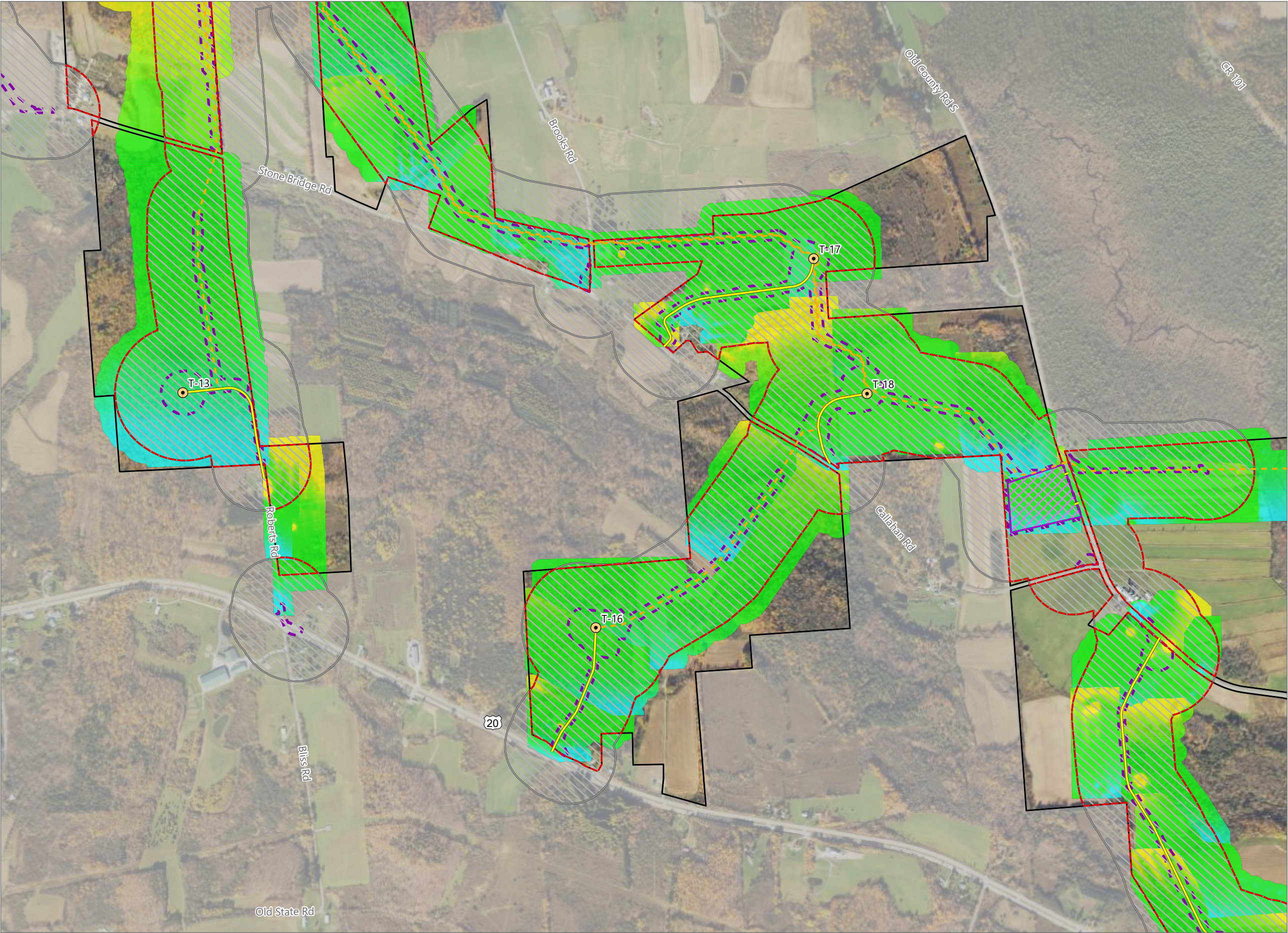
- Wind Turbine
- Access Road
- Collection Line
- Laydown Yard
- Limit of Disturbance
- Area within 500-Feet of Limit of Disturbance
- Magnetometer Survey Study Area
- Facility Site



Sheet 4 of 5



Prepared September 9, 2024  
Basemap: USDA NAIP "2022 New York 60cm" orthoimagery map service



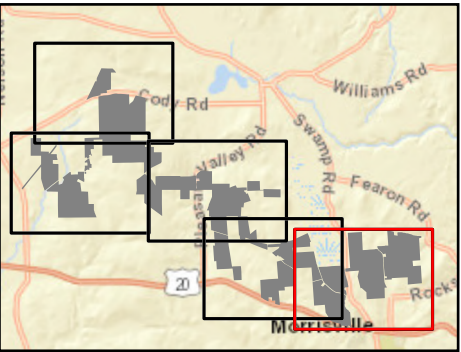


Hoffman Falls Wind

Towns of Eaton, Fenner, Nelson, and  
Smithfield, Madison County,  
New York

Facility Component

- Wind Turbine
- Access Road
- Collection Line
- Laydown Yard
- Limit of Disturbance
- Area within 500-Foot of Limit of Disturbance
- Magnetometer Survey Study Area
- Facility Site



Sheet 5 of 5



0 250 500 1,000  
US Feet

Prepared September 9, 2024  
Basemap: USDA NAIP "2022 New York 60cm" orthoimagery map  
service

