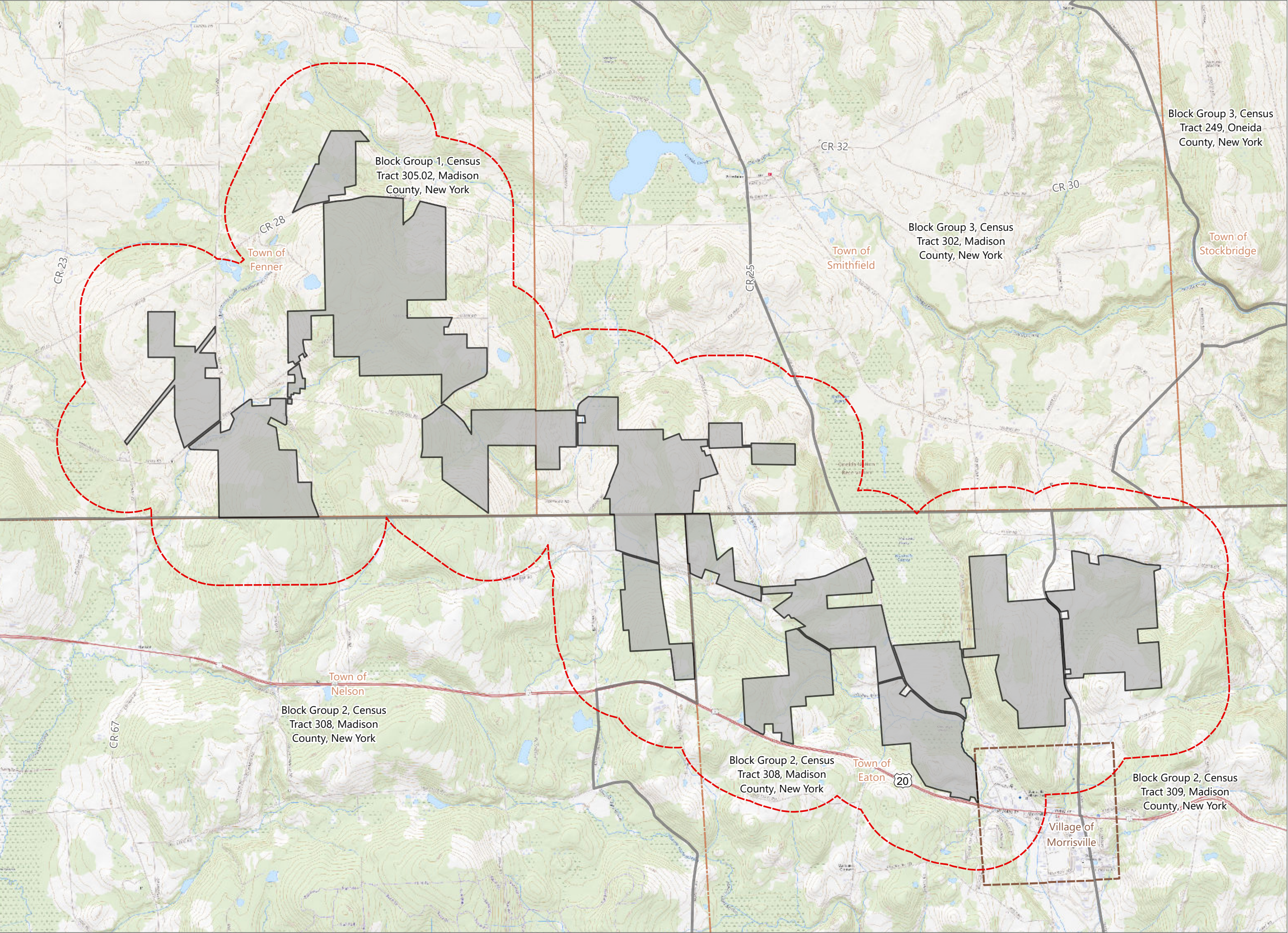


Figure 19-1. Potential Environmental Justice Areas



# Hoffman Falls Wind

Towns of Eaton, Fenner, Nelson and  
Smithfield, Madison County,  
New York

**94-c Permit Application  
Matter No. 23-00038**

- Census Block Group
- Facility Site
- EJ Study Area (0.5 mile radius)
- Village Boundary
- Town Boundary



0 1,000 2,000 4,000  
Feet

Prepared February 5, 2024  
Basemap: Esri "USGS Topo" map service