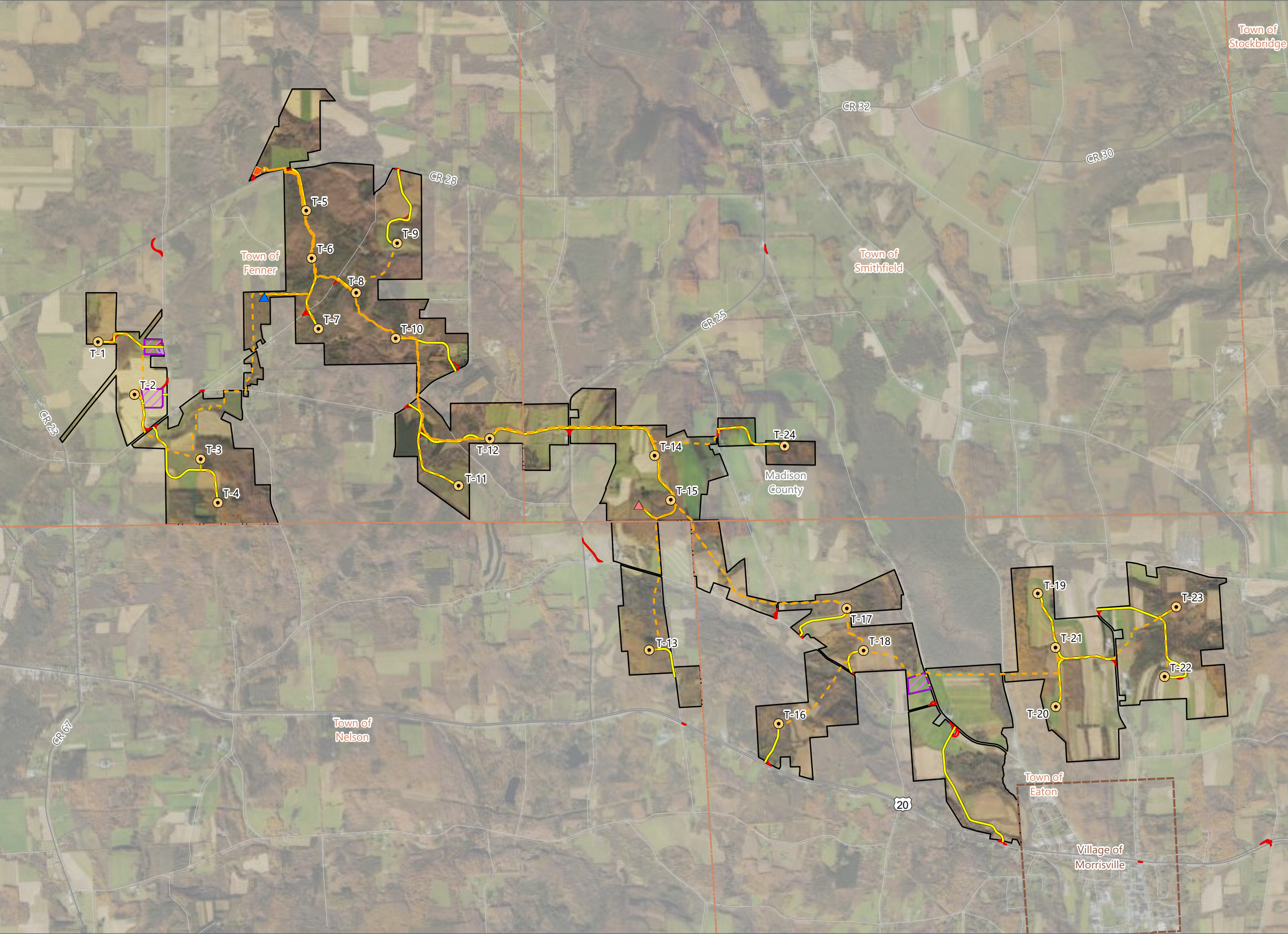


Figure 2-2. Facility Layout

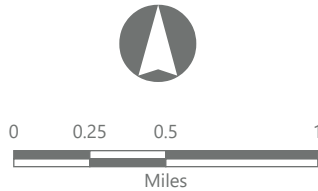


Hoffman Falls Wind

Towns of Eaton, Fenner, Nelson and
Smithfield, Madison County,
New York

**Section 94-c Second Supplement
Matter No. 23-0038**

- Wind Turbine
- ADLS Tower
- Permanent MET Tower
- Access Road
- Collection Line
- Collection Substation
- POI Substation
- O&M Building
- Laydown Yard
- Temporary Turning Improvement
- Facility Site



Prepared August 26, 2024
Basemap: USDA NAIP "2023 New York 60cm" orthoimagery map
service