



## Field Data Sheet





## Field Data Sheet

### **Notes :**

**Do you need to report observations of another open field?**

Yes



## Field Data Sheet

**Corresponding Point ID(s):** 33

**Anthropogenic Disturbance/Management Practices:** None notable

**Primary Open Field Cover Type:** Row Cropland (Active)

**Estimated Grass Cover (%):** 1-10%

**Estimated Forb Cover (%):** None

**Estimated Woody Vegetation Cover (%):** None

**Estimated Bare Ground (%):** 90-100%

**Estimated Litter Depth (inches):** None

**Average Vegetation Height (inches):** 6-12

**Dominant Plant Species (Common Names):** Corn

**Invasive Plant Species (Common Names):**

**Representative Photo(s):**







## Field Data Sheet







## Field Data Sheet

### **Notes :**

**Do you need to report observations of another open field?**

Yes



## Field Data Sheet

**Corresponding Point ID(s):** 32

**Anthropogenic Disturbance/Management Practices:** None notable

**Primary Open Field Cover Type:** Row Cropland (Active)

**Estimated Grass Cover (%):** 1-10%

**Estimated Forb Cover (%):** None

**Estimated Woody Vegetation Cover (%):** None

**Estimated Bare Ground (%):** 90-100%

**Estimated Litter Depth (inches):** None

**Average Vegetation Height (inches):** 4-6

**Dominant Plant Species (Common Names):** Corn

**Invasive Plant Species (Common Names):**

**Representative Photo(s):**





## Field Data Sheet







## Field Data Sheet

### **Notes :**

**Do you need to report observations of another open field?**

Yes



## Field Data Sheet

**Corresponding Point ID(s):** 31

**Anthropogenic Disturbance/Management Practices:** None notable

**Primary Open Field Cover Type:** Row Cropland (Active)

**Estimated Grass Cover (%):** 1-10%

**Estimated Forb Cover (%):** None

**Estimated Woody Vegetation Cover (%):** None

**Estimated Bare Ground (%):** 90-100%

**Estimated Litter Depth (inches):** None

**Average Vegetation Height (inches):** 4-6

**Dominant Plant Species (Common Names):** Corn

**Invasive Plant Species (Common Names):**

**Representative Photo(s):**





## Field Data Sheet







## Field Data Sheet

### **Notes :**

**Do you need to report observations of another open field?**

No



## Field Data Sheet

### Weather Conditions at End of Survey

**Temperature (°F):** 63

**Wind Speed (mph):** 4 – 7 (Light Breeze; Leaves rustle)

**Wind Direction:** WNW

**Cloud Cover:** Overcast (90-100%)

**Visibility:** Fair (0.62-10 miles; mist or light/moderate precipitation)

**Precipitation:** None (Clear)

**Weather Notes:**

**Were there any notable weather events/changes during the survey?** No

### Bird Observation Summary

**Were any Endangered/Threatened Species observed?**

No

**Were any Species of Special Concern observed?**

Yes

**Were probable, possible, or confirmed breeding behaviors observed for any Listed Species (Endangered/Threatened/Special Concern)?**

No

**Were there additional photos documenting birds observed, habitat conditions, and/or other features of interest?**

No

**Additional Photo(s):**

**Were any alternate point count survey locations used due to access or visual constraints?**

No

**Alternate Point Count Survey Locations:**



## Field Data Sheet

**Incidental bird species observed outside of timed point count surveys  
(Alpha Codes or Common Names):**

TUVU

**Overall Survey Notes:**





## Field Data Sheet

### Breeding Bird Survey

Submitted By: sbeguina@edrdpc.com

Submitted Time: June 8, 2023 5:06 PM

### Survey Information

**Project Name:** Agricola Wind

**Survey Date:** June 7, 2023

**Surveyor Name:** Samouel Beguin

**Points Surveyed:** 1-7, 9-15, 17, 18

**Survey Start Time:** 05:25

**Survey End Time:** 10:31

### Weather Conditions at Start of Survey

**Temperature (°F):** 47

**Wind Speed (mph):** 1 – 3 (Light Air; Smoke drifts)

**Wind Direction:** N

**Cloud Cover:** Partly Cloudy (25% - 50%)

**Visibility:** Fair (0.62-10 miles; mist or light/moderate precipitation)

**Precipitation:** None (Clear)

**Weather Notes:** Visibility reduced due to haze; approximately 6 miles at weather station in Moravia, NY



## Field Data Sheet

### Open Field Condition Observations

**Corresponding Point ID(s):** 1 and 2

**Anthropogenic Disturbance/Management Practices:** Traffic Noise

**Primary Open Field Cover Type:** Field Cropland (including hay, wheat, oats, etc.)

**Estimated Grass Cover (%):** None

**Estimated Forb Cover (%):** 50-90%

**Estimated Woody Vegetation Cover (%):** None

**Estimated Bare Ground (%):** None

**Estimated Litter Depth (inches):** 0-1"

**Average Vegetation Height (inches):** 4-6

**Dominant Plant Species (Common Names):** Alfalfa

**Invasive Plant Species (Common Names):** None

**Representative Photo(s):**



## Field Data Sheet







## Field Data Sheet



**Notes :**



## Field Data Sheet

**Do you need to report observations of another open field?**

Yes



## Field Data Sheet

**Corresponding Point ID(s):** 3

**Anthropogenic Disturbance/Management Practices:** Traffic Noise

**Primary Open Field Cover Type:** Other (describe in notes)

**Estimated Grass Cover (%):** 1-10%

**Estimated Forb Cover (%):** 25-50%

**Estimated Woody Vegetation Cover (%):** None

**Estimated Bare Ground (%):** 25-50%

**Estimated Litter Depth (inches):** 0-1"

**Average Vegetation Height (inches):** 4-6

**Dominant Plant Species (Common Names):** Alfalfa, grasses

**Invasive Plant Species (Common Names):** Honeysuckle along pasture edge

**Representative Photo(s):**





## Field Data Sheet





## Field Data Sheet



**Notes :**

Pasture to south, fallow/alfalfa crop field to north

**Do you need to report observations of another open field?**

Yes





## Field Data Sheet

**Corresponding Point ID(s):** 5

**Anthropogenic Disturbance/Management Practices:** Traffic Noise

**Primary Open Field Cover Type:** Row Cropland (Active)

**Estimated Grass Cover (%):** 1-10%

**Estimated Forb Cover (%):** 10-25%

**Estimated Woody Vegetation Cover (%):** None

**Estimated Bare Ground (%):** 50-90%

**Estimated Litter Depth (inches):** 0-1"

**Average Vegetation Height (inches):** 6-12

**Dominant Plant Species (Common Names):** Corn, alfalfa, grasses, dandelion, weeds

**Invasive Plant Species (Common Names):**

**Representative Photo(s):**





## Field Data Sheet





## Field Data Sheet



### Notes :

**Do you need to report observations of another open field?**

Yes



## Field Data Sheet

**Corresponding Point ID(s):** 4

**Anthropogenic Disturbance/Management Practices:** Traffic Noise

**Primary Open Field Cover Type:** Other (describe in notes)

**Estimated Grass Cover (%):** 25-50%

**Estimated Forb Cover (%):** 25-50%

**Estimated Woody Vegetation Cover (%):** 1-10%

**Estimated Bare Ground (%):** 25-50%

**Estimated Litter Depth (inches):** 0-1"

**Average Vegetation Height (inches):** 6-12

**Dominant Plant Species (Common Names):** Corn, alfalfa, and dandelion in field; grasses in pasture

**Invasive Plant Species (Common Names):** Honeysuckle along pasture edges

**Representative Photo(s):**







## Field Data Sheet







## Field Data Sheet



**Notes :**

Pasture to north, corn field to south

**Do you need to report observations of another open field?**

Yes



## Field Data Sheet

**Corresponding Point ID(s):** 6

**Anthropogenic Disturbance/Management Practices:** Traffic Noise

**Primary Open Field Cover Type:** Row Cropland (Active)

**Estimated Grass Cover (%):** None

**Estimated Forb Cover (%):** 1-10%

**Estimated Woody Vegetation Cover (%):** None

**Estimated Bare Ground (%):** 50-90%

**Estimated Litter Depth (inches):** 0-1"

**Average Vegetation Height (inches):** 6-12

**Dominant Plant Species (Common Names):** Corn, alfalfa

**Invasive Plant Species (Common Names):**

**Representative Photo(s):**





## Field Data Sheet





## Field Data Sheet



**Notes :**

Alfalfa planted in portion of field beginning at eastern edge of 100-meter plot; only small area within 100 meters

**Do you need to report observations of another open field?**

Yes





## Field Data Sheet

**Corresponding Point ID(s):** 7

**Anthropogenic Disturbance/Management Practices:** Traffic Noise

**Primary Open Field Cover Type:** Field Cropland (including hay, wheat, oats, etc.)

**Estimated Grass Cover (%):** 25-50%

**Estimated Forb Cover (%):** 50-90%

**Estimated Woody Vegetation Cover (%):** None

**Estimated Bare Ground (%):** 1-10%

**Estimated Litter Depth (inches):** 1-3"

**Average Vegetation Height (inches):** 6-12

**Dominant Plant Species (Common Names):** Alfalfa, grasses, dandelion

**Invasive Plant Species (Common Names):**

**Representative Photo(s):**







## Field Data Sheet





## Field Data Sheet



### Notes :

**Do you need to report observations of another open field?**

Yes



## Field Data Sheet

**Corresponding Point ID(s):** 9-10.1

**Anthropogenic Disturbance/Management Practices:** Traffic Noise

**Primary Open Field Cover Type:** Row Cropland (Active)

**Estimated Grass Cover (%):** None

**Estimated Forb Cover (%):** 1-10%

**Estimated Woody Vegetation Cover (%):** None

**Estimated Bare Ground (%):** 50-90%

**Estimated Litter Depth (inches):** 0-1"

**Average Vegetation Height (inches):** 4-6

**Dominant Plant Species (Common Names):** Corn, weeds

**Invasive Plant Species (Common Names):** Honeysuckle on wooded field edges

**Representative Photo(s):**





## Field Data Sheet







## Field Data Sheet



**Notes :**

One photo from each point

**Do you need to report observations of another open field?**

Yes





## Field Data Sheet

**Corresponding Point ID(s):** 11

**Anthropogenic Disturbance/Management Practices:** Traffic Noise

**Primary Open Field Cover Type:** Field Cropland (including hay, wheat, oats, etc.)

**Estimated Grass Cover (%):** 50-90%

**Estimated Forb Cover (%):** 25-50%

**Estimated Woody Vegetation Cover (%):** None

**Estimated Bare Ground (%):** 1-10%

**Estimated Litter Depth (inches):** 1-3"

**Average Vegetation Height (inches):** 4-6

**Dominant Plant Species (Common Names):** Grasses, clover, dandelion

**Invasive Plant Species (Common Names):**

**Representative Photo(s):**





## Field Data Sheet





## Field Data Sheet



**Notes :**

Mowed hayfield

**Do you need to report observations of another open field?**

Yes



## Field Data Sheet

**Corresponding Point ID(s):** 12-14

**Anthropogenic Disturbance/Management Practices:** Traffic Noise

**Primary Open Field Cover Type:** Field Cropland (including hay, wheat, oats, etc.)

**Estimated Grass Cover (%):** 50-90%

**Estimated Forb Cover (%):** None

**Estimated Woody Vegetation Cover (%):** 25-50%

**Estimated Bare Ground (%):** 1-10%

**Estimated Litter Depth (inches):** 1-3"

**Average Vegetation Height (inches):** 4-6

**Dominant Plant Species (Common Names):** Grasses, clover, dandelion

**Invasive Plant Species (Common Names):**

**Representative Photo(s):**







## Field Data Sheet







## Field Data Sheet



**Notes :**

Recently mowed hayfield; noise from traffic and tractor mowing roadside

**Do you need to report observations of another open field?**

Yes



## Field Data Sheet

**Corresponding Point ID(s):** 15

**Anthropogenic Disturbance/Management Practices:** Traffic Noise

**Primary Open Field Cover Type:** Field Cropland (including hay, wheat, oats, etc.)

**Estimated Grass Cover (%):** 50-90%

**Estimated Forb Cover (%):** 25-50%

**Estimated Woody Vegetation Cover (%):** None

**Estimated Bare Ground (%):** 1-10%

**Estimated Litter Depth (inches):** 1-3"

**Average Vegetation Height (inches):** 4-6

**Dominant Plant Species (Common Names):** Grasses, clover, dandelion

**Invasive Plant Species (Common Names):**

**Representative Photo(s):**





## Field Data Sheet





## Field Data Sheet



**Notes :**

More distant traffic and tractor noise

**Do you need to report observations of another open field?**

Yes





## Field Data Sheet

**Corresponding Point ID(s):** 17

**Anthropogenic Disturbance/Management Practices:** None notable

**Primary Open Field Cover Type:** Field Cropland (including hay, wheat, oats, etc.)

**Estimated Grass Cover (%):** 50-90%

**Estimated Forb Cover (%):** 25-50%

**Estimated Woody Vegetation Cover (%):** 50-90%

**Estimated Bare Ground (%):** None

**Estimated Litter Depth (inches):** 0-1"

**Average Vegetation Height (inches):** 36-42

**Dominant Plant Species (Common Names):** Grasses, clover, alfalfa, dandelion

**Invasive Plant Species (Common Names):**

**Representative Photo(s):**





## Field Data Sheet





## Field Data Sheet



**Notes :**

Unmowed hayfield

**Do you need to report observations of another open field?**

Yes



## Field Data Sheet

**Corresponding Point ID(s):** 18

**Anthropogenic Disturbance/Management Practices:** None notable

**Primary Open Field Cover Type:** Row Cropland (Active)

**Estimated Grass Cover (%):** None

**Estimated Forb Cover (%):** None

**Estimated Woody Vegetation Cover (%):** None

**Estimated Bare Ground (%):** 90-100%

**Estimated Litter Depth (inches):** 0-1"

**Average Vegetation Height (inches):** 0 (None)

**Dominant Plant Species (Common Names):**

**Invasive Plant Species (Common Names):**

**Representative Photo(s):**







## Field Data Sheet





## Field Data Sheet



**Notes :**

Bare corn field

**Do you need to report observations of another open field?**

No



## Field Data Sheet

### Weather Conditions at End of Survey

**Temperature (°F):** 52

**Wind Speed (mph):** 4 – 7 (Light Breeze; Leaves rustle)

**Wind Direction:** WNW

**Cloud Cover:** Mostly Cloudy (50% - 90%)

**Visibility:** Fair (0.62-10 miles; mist or light/moderate precipitation)

**Precipitation:** None (Clear)

**Weather Notes:** Haze continued throughout survey, reducing visibility to 2 miles based on weather station in Moravia, NY

**Were there any notable weather events/changes during the survey?** No

### Bird Observation Summary

**Were any Endangered/Threatened Species observed?**

No

**Were any Species of Special Concern observed?**

Yes

**Were probable, possible, or confirmed breeding behaviors observed for any Listed Species (Endangered/Threatened/Special Concern)?**

Yes

**Were there additional photos documenting birds observed, habitat conditions, and/or other features of interest?**

No

**Additional Photo(s):**

**Were any alternate point count survey locations used due to access or visual constraints?**

No



## Field Data Sheet

### **Alternate Point Count Survey Locations:**

#### **Incidental bird species observed outside of timed point count surveys (Alpha Codes or Common Names):**

EAWP BHCO WODU MODO ROPI BARS CHSP CEDW BOBO EAKI YEWA TUVU GBHE

#### **Overall Survey Notes:**

Yellow warbler observed incidentally carrying food between points 14 and 15;  
Possible juvenile northern flicker observed incidentally near point 15





## Field Data Sheet

### Breeding Bird Survey

Submitted By: bsmith@edrdpc.com

Submitted Time: June 9, 2023 10:17 AM

### Survey Information

**Project Name:** Agricola Wind

**Survey Date:** June 9, 2023

**Surveyor Name:** Brooke Smith

**Points Surveyed:** 49-62

**Survey Start Time:** 05:15

**Survey End Time:** 10:19

### Weather Conditions at Start of Survey

**Temperature (°F):** 44

**Wind Speed (mph):** 0 – 1 (Calm; Smoke rises vertically)

**Wind Direction:** ESE

**Cloud Cover:** Overcast (90-100%)

**Visibility:** Good (10+ miles; clear)

**Precipitation:** None (Clear)

**Weather Notes:**



## Field Data Sheet

### Open Field Condition Observations

**Corresponding Point ID(s):** 49

**Anthropogenic Disturbance/Management Practices:** None notable

**Primary Open Field Cover Type:** Row Cropland (Active)

**Estimated Grass Cover (%):** None

**Estimated Forb Cover (%):** 1-10%

**Estimated Woody Vegetation Cover (%):** None

**Estimated Bare Ground (%):** 90-100%

**Estimated Litter Depth (inches):** 0-1"

**Average Vegetation Height (inches):** 0-2

**Dominant Plant Species (Common Names):** Corn

**Invasive Plant Species (Common Names):**

**Representative Photo(s):**





## Field Data Sheet





## Field Data Sheet

### **Notes :**

**Do you need to report observations of another open field?**

Yes





## Field Data Sheet

**Corresponding Point ID(s):** 50

**Anthropogenic Disturbance/Management Practices:** None notable

**Primary Open Field Cover Type:** Row Cropland (Active)

**Estimated Grass Cover (%):** None

**Estimated Forb Cover (%):** 1-10%

**Estimated Woody Vegetation Cover (%):** None

**Estimated Bare Ground (%):** 90-100%

**Estimated Litter Depth (inches):** 0-1"

**Average Vegetation Height (inches):** 0-2

**Dominant Plant Species (Common Names):** Corn

**Invasive Plant Species (Common Names):**

**Representative Photo(s):**





## Field Data Sheet





## Field Data Sheet

### **Notes :**

**Do you need to report observations of another open field?**

Yes



## Field Data Sheet

**Corresponding Point ID(s):** 51

**Anthropogenic Disturbance/Management Practices:** Traffic Noise

**Primary Open Field Cover Type:** Field Cropland (including hay, wheat, oats, etc.)

**Estimated Grass Cover (%):** 90-100%

**Estimated Forb Cover (%):** None

**Estimated Woody Vegetation Cover (%):** None

**Estimated Bare Ground (%):** None

**Estimated Litter Depth (inches):** None

**Average Vegetation Height (inches):** 0-2

**Dominant Plant Species (Common Names):** Grass

**Invasive Plant Species (Common Names):**

**Representative Photo(s):**







## Field Data Sheet





## Field Data Sheet

### **Notes :**

**Do you need to report observations of another open field?**

Yes



## Field Data Sheet

**Corresponding Point ID(s):** 62

**Anthropogenic Disturbance/Management Practices:** None notable

**Primary Open Field Cover Type:** Row Cropland (Active)

**Estimated Grass Cover (%):** None

**Estimated Forb Cover (%):** 1-10%

**Estimated Woody Vegetation Cover (%):** None

**Estimated Bare Ground (%):** 90-100%

**Estimated Litter Depth (inches):** None

**Average Vegetation Height (inches):** 2-4

**Dominant Plant Species (Common Names):** Corn

**Invasive Plant Species (Common Names):**

**Representative Photo(s):**





## Field Data Sheet







## Field Data Sheet

### **Notes :**

**Do you need to report observations of another open field?**

Yes



## Field Data Sheet

**Corresponding Point ID(s):** 55.2

**Anthropogenic Disturbance/Management Practices:** Farm Equipment Noise

**Primary Open Field Cover Type:** Row Cropland (Active)

**Estimated Grass Cover (%):** 1-10%

**Estimated Forb Cover (%):** 1-10%

**Estimated Woody Vegetation Cover (%):** None

**Estimated Bare Ground (%):** 50-90%

**Estimated Litter Depth (inches):** None

**Average Vegetation Height (inches):** 4-6

**Dominant Plant Species (Common Names):** Corn, grass

**Invasive Plant Species (Common Names):**

**Representative Photo(s):**





## Field Data Sheet





## Field Data Sheet

### **Notes :**

**Do you need to report observations of another open field?**

Yes





## Field Data Sheet

**Corresponding Point ID(s):** 55.1

**Anthropogenic Disturbance/Management Practices:** Farm Equipment Noise

**Primary Open Field Cover Type:** Pastureland

**Estimated Grass Cover (%):** 90-100%

**Estimated Forb Cover (%):** None

**Estimated Woody Vegetation Cover (%):** None

**Estimated Bare Ground (%):** None

**Estimated Litter Depth (inches):** None

**Average Vegetation Height (inches):** 0-2

**Dominant Plant Species (Common Names):** Grass

**Invasive Plant Species (Common Names):**

**Representative Photo(s):**





## Field Data Sheet





## Field Data Sheet

### **Notes :**

**Do you need to report observations of another open field?**

Yes



## Field Data Sheet

**Corresponding Point ID(s):** 55

**Anthropogenic Disturbance/Management Practices:** None notable

**Primary Open Field Cover Type:** Row Cropland (Active)

**Estimated Grass Cover (%):** None

**Estimated Forb Cover (%):** 1-10%

**Estimated Woody Vegetation Cover (%):** None

**Estimated Bare Ground (%):** 90-100%

**Estimated Litter Depth (inches):** 0-1"

**Average Vegetation Height (inches):** 0-2

**Dominant Plant Species (Common Names):** Corn

**Invasive Plant Species (Common Names):**

**Representative Photo(s):**





## Field Data Sheet







## Field Data Sheet

### **Notes :**

**Do you need to report observations of another open field?**

Yes



## Field Data Sheet

**Corresponding Point ID(s):** 54

**Anthropogenic Disturbance/Management Practices:** None notable

**Primary Open Field Cover Type:** Row Cropland (Active)

**Estimated Grass Cover (%):** None

**Estimated Forb Cover (%):** 1-10%

**Estimated Woody Vegetation Cover (%):** None

**Estimated Bare Ground (%):** 90-100%

**Estimated Litter Depth (inches):** None

**Average Vegetation Height (inches):** 0-2

**Dominant Plant Species (Common Names):** Corn

**Invasive Plant Species (Common Names):**

**Representative Photo(s):**





## Field Data Sheet





## Field Data Sheet

### **Notes :**

**Do you need to report observations of another open field?**

Yes



## Field Data Sheet

**Corresponding Point ID(s):** 59

**Anthropogenic Disturbance/Management Practices:** Traffic Noise

**Primary Open Field Cover Type:** Field Cropland (including hay, wheat, oats, etc.)

**Estimated Grass Cover (%):** 90-100%

**Estimated Forb Cover (%):** None

**Estimated Woody Vegetation Cover (%):** None

**Estimated Bare Ground (%):** None

**Estimated Litter Depth (inches):** None

**Average Vegetation Height (inches):** 0-2

**Dominant Plant Species (Common Names):** Grass

**Invasive Plant Species (Common Names):**

**Representative Photo(s):**







## Field Data Sheet





## Field Data Sheet

### **Notes :**

**Do you need to report observations of another open field?**

Yes



## Field Data Sheet

**Corresponding Point ID(s):** 61

**Anthropogenic Disturbance/Management Practices:** None notable

**Primary Open Field Cover Type:** Field Cropland (including hay, wheat, oats, etc.)

**Estimated Grass Cover (%):** None

**Estimated Forb Cover (%):** 90-100%

**Estimated Woody Vegetation Cover (%):** None

**Estimated Bare Ground (%):** None

**Estimated Litter Depth (inches):** None

**Average Vegetation Height (inches):** 36-42

**Dominant Plant Species (Common Names):** Wheat

**Invasive Plant Species (Common Names):**

**Representative Photo(s):**





## Field Data Sheet





## Field Data Sheet

### **Notes :**

**Do you need to report observations of another open field?**

Yes





## Field Data Sheet

**Corresponding Point ID(s):** 60

**Anthropogenic Disturbance/Management Practices:** Traffic Noise

**Primary Open Field Cover Type:** Field Cropland (including hay, wheat, oats, etc.)

**Estimated Grass Cover (%):** None

**Estimated Forb Cover (%):** 90-100%

**Estimated Woody Vegetation Cover (%):** None

**Estimated Bare Ground (%):** None

**Estimated Litter Depth (inches):** None

**Average Vegetation Height (inches):** 36-42

**Dominant Plant Species (Common Names):** Wheat

**Invasive Plant Species (Common Names):**

**Representative Photo(s):**





## Field Data Sheet





## Field Data Sheet

### **Notes :**

**Do you need to report observations of another open field?**

Yes



## Field Data Sheet

**Corresponding Point ID(s):** 58

**Anthropogenic Disturbance/Management Practices:** None notable

**Primary Open Field Cover Type:** Field Cropland (including hay, wheat, oats, etc.)

**Estimated Grass Cover (%):** 90-100%

**Estimated Forb Cover (%):** None

**Estimated Woody Vegetation Cover (%):** None

**Estimated Bare Ground (%):** None

**Estimated Litter Depth (inches):** None

**Average Vegetation Height (inches):** 0-2

**Dominant Plant Species (Common Names):** Grass

**Invasive Plant Species (Common Names):**

**Representative Photo(s):**





## Field Data Sheet







## Field Data Sheet

### **Notes :**

**Do you need to report observations of another open field?**

Yes



## Field Data Sheet

**Corresponding Point ID(s):** 57

**Anthropogenic Disturbance/Management Practices:** Traffic Noise

**Primary Open Field Cover Type:** Row Cropland (Active)

**Estimated Grass Cover (%):** None

**Estimated Forb Cover (%):** 1-10%

**Estimated Woody Vegetation Cover (%):** None

**Estimated Bare Ground (%):** 90-100%

**Estimated Litter Depth (inches):** 0-1"

**Average Vegetation Height (inches):** 0-2

**Dominant Plant Species (Common Names):** Corn

**Invasive Plant Species (Common Names):**

**Representative Photo(s):**





## Field Data Sheet





## Field Data Sheet

### **Notes :**

**Do you need to report observations of another open field?**

Yes



## Field Data Sheet

**Corresponding Point ID(s):** 56

**Anthropogenic Disturbance/Management Practices:** None notable

**Primary Open Field Cover Type:** Row Cropland (Active)

**Estimated Grass Cover (%):** None

**Estimated Forb Cover (%):** 1-10%

**Estimated Woody Vegetation Cover (%):** None

**Estimated Bare Ground (%):** 90-100%

**Estimated Litter Depth (inches):** 0-1"

**Average Vegetation Height (inches):** 0-2

**Dominant Plant Species (Common Names):** Corn

**Invasive Plant Species (Common Names):**

**Representative Photo(s):**







## Field Data Sheet





## Field Data Sheet

### **Notes :**

**Do you need to report observations of another open field?**

Yes



## Field Data Sheet

**Corresponding Point ID(s):** 53

**Anthropogenic Disturbance/Management Practices:** None notable

**Primary Open Field Cover Type:** Row Cropland (Active)

**Estimated Grass Cover (%):** None

**Estimated Forb Cover (%):** None

**Estimated Woody Vegetation Cover (%):** None

**Estimated Bare Ground (%):** 90-100%

**Estimated Litter Depth (inches):** None

**Average Vegetation Height (inches):** 0 (None)

**Dominant Plant Species (Common Names):**

**Invasive Plant Species (Common Names):**

**Representative Photo(s):**





## Field Data Sheet





## Field Data Sheet

### **Notes :**

**Do you need to report observations of another open field?**

Yes





## Field Data Sheet

**Corresponding Point ID(s):** 52

**Anthropogenic Disturbance/Management Practices:** None notable

**Primary Open Field Cover Type:** Row Cropland (Active)

**Estimated Grass Cover (%):** None

**Estimated Forb Cover (%):** None

**Estimated Woody Vegetation Cover (%):** None

**Estimated Bare Ground (%):** 90-100%

**Estimated Litter Depth (inches):** 0-1"

**Average Vegetation Height (inches):** 0 (None)

**Dominant Plant Species (Common Names):**

**Invasive Plant Species (Common Names):**

**Representative Photo(s):**





## Field Data Sheet





## Field Data Sheet

### **Notes :**

**Do you need to report observations of another open field?**

Yes



## Field Data Sheet

**Corresponding Point ID(s):** 58.1

**Anthropogenic Disturbance/Management Practices:** Traffic Noise

**Primary Open Field Cover Type:** Field Cropland (including hay, wheat, oats, etc.)

**Estimated Grass Cover (%):** 50-90%

**Estimated Forb Cover (%):** 50-90%

**Estimated Woody Vegetation Cover (%):** None

**Estimated Bare Ground (%):** None

**Estimated Litter Depth (inches):** None

**Average Vegetation Height (inches):** 42-48

**Dominant Plant Species (Common Names):** Wheat and hay

**Invasive Plant Species (Common Names):**

**Representative Photo(s):**





## Field Data Sheet







## Field Data Sheet

### **Notes :**

**Do you need to report observations of another open field?**

Yes



## Field Data Sheet

**Corresponding Point ID(s):**

**Anthropogenic Disturbance/Management Practices:** Traffic Noise

**Primary Open Field Cover Type:**

**Estimated Grass Cover (%):** None

**Estimated Forb Cover (%):** 90-100%

**Estimated Woody Vegetation Cover (%):** None

**Estimated Bare Ground (%):** None

**Estimated Litter Depth (inches):** None

**Average Vegetation Height (inches):** 36-42

**Dominant Plant Species (Common Names):** Wheat

**Invasive Plant Species (Common Names):**

**Representative Photo(s):**





## Field Data Sheet





## Field Data Sheet

### **Notes :**

**Do you need to report observations of another open field?**

No



## Field Data Sheet

### Weather Conditions at End of Survey

**Temperature (°F):** 56

**Wind Speed (mph):** 4 – 7 (Light Breeze; Leaves rustle)

**Wind Direction:** WSW

**Cloud Cover:** Overcast (90-100%)

**Visibility:** Good (10+ miles; clear)

**Precipitation:** None (Clear)

**Weather Notes:**

**Were there any notable weather events/changes during the survey?** No

### Bird Observation Summary

**Were any Endangered/Threatened Species observed?**

No

**Were any Species of Special Concern observed?**

Yes

**Were probable, possible, or confirmed breeding behaviors observed for any Listed Species (Endangered/Threatened/Special Concern)?**

No

**Were there additional photos documenting birds observed, habitat conditions, and/or other features of interest?**

Yes

**Additional Photo(s):**

**Were any alternate point count survey locations used due to access or visual constraints?**

Yes

**Alternate Point Count Survey Locations:** 55.1 (active cow pasture)





## Field Data Sheet

**Incidental bird species observed outside of timed point count surveys  
(Alpha Codes or Common Names):**

MODO

**Overall Survey Notes:**

Photo of UNSP nest in project folder.



## Field Data Sheet

### Breeding Bird Survey

Submitted By: mbaber@edrdpc.com

Submitted Time: June 9, 2023 12:20 PM

### Survey Information

**Project Name:** Agricola Wind

**Survey Date:** June 9, 2023

**Surveyor Name:** Max Baber

**Points Surveyed:** 39-48, 63-68

**Survey Start Time:** 05:27

**Survey End Time:** 10:31

### Weather Conditions at Start of Survey

**Temperature (°F):** 59

**Wind Speed (mph):** 1 – 3 (Light Air; Smoke drifts)

**Wind Direction:** NNE

**Cloud Cover:** Partly Cloudy (25% - 50%)

**Visibility:** Fair (0.62-10 miles; mist or light/moderate precipitation)

**Precipitation:** None (Clear)

**Weather Notes:**



## Field Data Sheet

### Open Field Condition Observations

**Corresponding Point ID(s):** 63

**Anthropogenic Disturbance/Management Practices:** None notable

**Primary Open Field Cover Type:** Field Cropland (including hay, wheat, oats, etc.)

**Estimated Grass Cover (%):** 25-50%

**Estimated Forb Cover (%):** 50-90%

**Estimated Woody Vegetation Cover (%):** None

**Estimated Bare Ground (%):** None

**Estimated Litter Depth (inches):** 1-3"

**Average Vegetation Height (inches):** 12-18

**Dominant Plant Species (Common Names):** Vetch, bedstraw, buttercup, grasses

**Invasive Plant Species (Common Names):**

**Representative Photo(s):**





## Field Data Sheet





## Field Data Sheet

### **Notes :**

**Do you need to report observations of another open field?**

Yes





## Field Data Sheet

**Corresponding Point ID(s):** 68

**Anthropogenic Disturbance/Management Practices:** None notable

**Primary Open Field Cover Type:** Row Cropland (Active)

**Estimated Grass Cover (%):** 1-10%

**Estimated Forb Cover (%):** 1-10%

**Estimated Woody Vegetation Cover (%):** None

**Estimated Bare Ground (%):** 90-100%

**Estimated Litter Depth (inches):** None

**Average Vegetation Height (inches):** 2-4

**Dominant Plant Species (Common Names):** Corn, dead nettle

**Invasive Plant Species (Common Names):**

**Representative Photo(s):**





## Field Data Sheet





## Field Data Sheet

### **Notes :**

**Do you need to report observations of another open field?**

Yes



## Field Data Sheet

**Corresponding Point ID(s):** 66

**Anthropogenic Disturbance/Management Practices:** None notable

**Primary Open Field Cover Type:** Row Cropland (Active)

**Estimated Grass Cover (%):** None

**Estimated Forb Cover (%):** None

**Estimated Woody Vegetation Cover (%):** None

**Estimated Bare Ground (%):** 90-100%

**Estimated Litter Depth (inches):** None

**Average Vegetation Height (inches):** 0 (None)

**Dominant Plant Species (Common Names):**

**Invasive Plant Species (Common Names):**

**Representative Photo(s):**







## Field Data Sheet







## Field Data Sheet

### **Notes :**

**Do you need to report observations of another open field?**

Yes



## Field Data Sheet

**Corresponding Point ID(s):** 65

**Anthropogenic Disturbance/Management Practices:** Traffic Noise

**Primary Open Field Cover Type:** Row Cropland (Active)

**Estimated Grass Cover (%):** None

**Estimated Forb Cover (%):** None

**Estimated Woody Vegetation Cover (%):** None

**Estimated Bare Ground (%):** 90-100%

**Estimated Litter Depth (inches):** None

**Average Vegetation Height (inches):** 0 (None)

**Dominant Plant Species (Common Names):**

**Invasive Plant Species (Common Names):**

**Representative Photo(s):**





## Field Data Sheet





## Field Data Sheet

### **Notes :**

**Do you need to report observations of another open field?**

Yes



## Field Data Sheet

**Corresponding Point ID(s):** 42

**Anthropogenic Disturbance/Management Practices:** Traffic Noise

**Primary Open Field Cover Type:** Row Cropland (Active)

**Estimated Grass Cover (%):** 1-10%

**Estimated Forb Cover (%):** 10-25%

**Estimated Woody Vegetation Cover (%):** None

**Estimated Bare Ground (%):** 50-90%

**Estimated Litter Depth (inches):** None

**Average Vegetation Height (inches):** 4-6

**Dominant Plant Species (Common Names):** Corn

**Invasive Plant Species (Common Names):** Dandelion

**Representative Photo(s):**







## Field Data Sheet





## Field Data Sheet

### **Notes :**

**Do you need to report observations of another open field?**

Yes



## Field Data Sheet

**Corresponding Point ID(s):** 64

**Anthropogenic Disturbance/Management Practices:** Traffic Noise

**Primary Open Field Cover Type:** Field Cropland (including hay, wheat, oats, etc.)

**Estimated Grass Cover (%):** 25-50%

**Estimated Forb Cover (%):** 25-50%

**Estimated Woody Vegetation Cover (%):** None

**Estimated Bare Ground (%):** 25-50%

**Estimated Litter Depth (inches):** None

**Average Vegetation Height (inches):** 24-30

**Dominant Plant Species (Common Names):** Wheat, vetch

**Invasive Plant Species (Common Names):**

**Representative Photo(s):**







## Field Data Sheet





## Field Data Sheet

### **Notes :**

**Do you need to report observations of another open field?**

Yes





## Field Data Sheet

**Corresponding Point ID(s):** 67

**Anthropogenic Disturbance/Management Practices:** Traffic Noise

**Primary Open Field Cover Type:** Row Cropland (Active)

**Estimated Grass Cover (%):** 1-10%

**Estimated Forb Cover (%):** 1-10%

**Estimated Woody Vegetation Cover (%):** None

**Estimated Bare Ground (%):** None

**Estimated Litter Depth (inches):** None

**Average Vegetation Height (inches):** 6-12

**Dominant Plant Species (Common Names):** Corn, mustard

**Invasive Plant Species (Common Names):**

**Representative Photo(s):**





## Field Data Sheet





## Field Data Sheet

### **Notes :**

**Do you need to report observations of another open field?**

Yes



## Field Data Sheet

**Corresponding Point ID(s):** 41

**Anthropogenic Disturbance/Management Practices:** None notable

**Primary Open Field Cover Type:** Row Cropland (Active)

**Estimated Grass Cover (%):** 1-10%

**Estimated Forb Cover (%):** 10-25%

**Estimated Woody Vegetation Cover (%):** None

**Estimated Bare Ground (%):** 50-90%

**Estimated Litter Depth (inches):** None

**Average Vegetation Height (inches):** 4-6

**Dominant Plant Species (Common Names):** Corn, goldenrod

**Invasive Plant Species (Common Names):** Dandelion

**Representative Photo(s):**







## Field Data Sheet







## Field Data Sheet

### **Notes :**

**Do you need to report observations of another open field?**

Yes



## Field Data Sheet

**Corresponding Point ID(s):** 40.1

**Anthropogenic Disturbance/Management Practices:** None notable

**Primary Open Field Cover Type:** Row Cropland (Active)

**Estimated Grass Cover (%):** 1-10%

**Estimated Forb Cover (%):** 1-10%

**Estimated Woody Vegetation Cover (%):** None

**Estimated Bare Ground (%):** 90-100%

**Estimated Litter Depth (inches):** None

**Average Vegetation Height (inches):** 6-12

**Dominant Plant Species (Common Names):** Corn, mustard, burdock

**Invasive Plant Species (Common Names):**

**Representative Photo(s):**





## Field Data Sheet





## Field Data Sheet

### **Notes :**

**Do you need to report observations of another open field?**

Yes



## Field Data Sheet

**Corresponding Point ID(s):** 47

**Anthropogenic Disturbance/Management Practices:** None notable

**Primary Open Field Cover Type:** Row Cropland (Active)

**Estimated Grass Cover (%):** 1-10%

**Estimated Forb Cover (%):** 1-10%

**Estimated Woody Vegetation Cover (%):** None

**Estimated Bare Ground (%):** 90-100%

**Estimated Litter Depth (inches):** None

**Average Vegetation Height (inches):** 4-6

**Dominant Plant Species (Common Names):** Corn

**Invasive Plant Species (Common Names):**

**Representative Photo(s):**







## Field Data Sheet





## Field Data Sheet

### **Notes :**

**Do you need to report observations of another open field?**

Yes



## Field Data Sheet

**Corresponding Point ID(s):** 40

**Anthropogenic Disturbance/Management Practices:** None notable

**Primary Open Field Cover Type:** Row Cropland (Active)

**Estimated Grass Cover (%):** 1-10%

**Estimated Forb Cover (%):** None

**Estimated Woody Vegetation Cover (%):** None

**Estimated Bare Ground (%):** 90-100%

**Estimated Litter Depth (inches):** None

**Average Vegetation Height (inches):** 2-4

**Dominant Plant Species (Common Names):** Corn

**Invasive Plant Species (Common Names):**

**Representative Photo(s):**





## Field Data Sheet





## Field Data Sheet

### **Notes :**

**Do you need to report observations of another open field?**

Yes





## Field Data Sheet

**Corresponding Point ID(s):** 39

**Anthropogenic Disturbance/Management Practices:** None notable

**Primary Open Field Cover Type:** Field Cropland (including hay, wheat, oats, etc.)

**Estimated Grass Cover (%):** 50-90%

**Estimated Forb Cover (%):** 25-50%

**Estimated Woody Vegetation Cover (%):** None

**Estimated Bare Ground (%):** 1-10%

**Estimated Litter Depth (inches):** 0-1"

**Average Vegetation Height (inches):** 4-6

**Dominant Plant Species (Common Names):** Grasses, plantain, clover

**Invasive Plant Species (Common Names):**

**Representative Photo(s):**





## Field Data Sheet





## Field Data Sheet

**Notes :**

Field mowed since previous survey

**Do you need to report observations of another open field?**

Yes



## Field Data Sheet

**Corresponding Point ID(s):** 43

**Anthropogenic Disturbance/Management Practices:** Traffic Noise

**Primary Open Field Cover Type:** Field Cropland (including hay, wheat, oats, etc.)

**Estimated Grass Cover (%):** 90-100%

**Estimated Forb Cover (%):** None

**Estimated Woody Vegetation Cover (%):** None

**Estimated Bare Ground (%):** None

**Estimated Litter Depth (inches):** None

**Average Vegetation Height (inches):** 60+

**Dominant Plant Species (Common Names):** Wheat

**Invasive Plant Species (Common Names):**

**Representative Photo(s):**







## Field Data Sheet







## Field Data Sheet

### **Notes :**

**Do you need to report observations of another open field?**

Yes



## Field Data Sheet

**Corresponding Point ID(s):** 44

**Anthropogenic Disturbance/Management Practices:** None notable

**Primary Open Field Cover Type:** Field Cropland (including hay, wheat, oats, etc.)

**Estimated Grass Cover (%):** 50-90%

**Estimated Forb Cover (%):** None

**Estimated Woody Vegetation Cover (%):** None

**Estimated Bare Ground (%):** 1-10%

**Estimated Litter Depth (inches):** None

**Average Vegetation Height (inches):** 48-54

**Dominant Plant Species (Common Names):** Wheat

**Invasive Plant Species (Common Names):**

**Representative Photo(s):**





## Field Data Sheet





## Field Data Sheet

### **Notes :**

**Do you need to report observations of another open field?**

Yes



## Field Data Sheet

**Corresponding Point ID(s):** 45

**Anthropogenic Disturbance/Management Practices:** None notable

**Primary Open Field Cover Type:** Field Cropland (including hay, wheat, oats, etc.)

**Estimated Grass Cover (%):** 90-100%

**Estimated Forb Cover (%):** None

**Estimated Woody Vegetation Cover (%):** None

**Estimated Bare Ground (%):** None

**Estimated Litter Depth (inches):** None

**Average Vegetation Height (inches):** 54-60

**Dominant Plant Species (Common Names):** Wheat

**Invasive Plant Species (Common Names):**

**Representative Photo(s):**







## Field Data Sheet





## Field Data Sheet

### **Notes :**

**Do you need to report observations of another open field?**

Yes



## Field Data Sheet

**Corresponding Point ID(s):** 46

**Anthropogenic Disturbance/Management Practices:** None notable

**Primary Open Field Cover Type:** Field Cropland (including hay, wheat, oats, etc.)

**Estimated Grass Cover (%):** 90-100%

**Estimated Forb Cover (%):** None

**Estimated Woody Vegetation Cover (%):** None

**Estimated Bare Ground (%):** None

**Estimated Litter Depth (inches):** None

**Average Vegetation Height (inches):** 54-60

**Dominant Plant Species (Common Names):** Wheat

**Invasive Plant Species (Common Names):**

**Representative Photo(s):**





## Field Data Sheet





## Field Data Sheet

### **Notes :**

**Do you need to report observations of another open field?**

Yes





## Field Data Sheet

**Corresponding Point ID(s):** 48

**Anthropogenic Disturbance/Management Practices:** None notable

**Primary Open Field Cover Type:** Field Cropland (including hay, wheat, oats, etc.)

**Estimated Grass Cover (%):** 50-90%

**Estimated Forb Cover (%):** None

**Estimated Woody Vegetation Cover (%):** None

**Estimated Bare Ground (%):** 10-25%

**Estimated Litter Depth (inches):** None

**Average Vegetation Height (inches):** 42-48

**Dominant Plant Species (Common Names):** Wheat

**Invasive Plant Species (Common Names):**

**Representative Photo(s):**





## Field Data Sheet





## Field Data Sheet

### **Notes :**

**Do you need to report observations of another open field?**

No



## Field Data Sheet

### Weather Conditions at End of Survey

**Temperature (°F):** 55

**Wind Speed (mph):** 1 – 3 (Light Air; Smoke drifts)

**Wind Direction:** W

**Cloud Cover:** Overcast (90-100%)

**Visibility:** Fair (0.62-10 miles; mist or light/moderate precipitation)

**Precipitation:** None (Clear)

**Weather Notes:** Brief drizzle around 0900

**Were there any notable weather events/changes during the survey?** No

### Bird Observation Summary

**Were any Endangered/Threatened Species observed?**

No

**Were any Species of Special Concern observed?**

Yes

**Were probable, possible, or confirmed breeding behaviors observed for any Listed Species (Endangered/Threatened/Special Concern)?**

Yes

**Were there additional photos documenting birds observed, habitat conditions, and/or other features of interest?**

No

**Additional Photo(s):**

**Were any alternate point count survey locations used due to access or visual constraints?**

No

**Alternate Point Count Survey Locations:**



## Field Data Sheet

**Incidental bird species observed outside of timed point count surveys  
(Alpha Codes or Common Names):**

AMKE, ALFL

**Overall Survey Notes:**





## Field Data Sheet

### Breeding Bird Survey

Submitted By: mbaber@edrdpc.com

Submitted Time: June 12, 2023 12:49 PM

### Survey Information

**Project Name:** Agricola Wind

**Survey Date:** June 12, 2023

**Surveyor Name:** Max Baber

**Points Surveyed:** 20-38, 51

**Survey Start Time:** 05:15

**Survey End Time:** 10:25

### Weather Conditions at Start of Survey

**Temperature (°F):** 68

**Wind Speed (mph):** 8 – 12 (Gentle Breeze; Leaves and Small twigs in constant motion)

**Wind Direction:** SE

**Cloud Cover:** Overcast (90-100%)

**Visibility:** Good (10+ miles; clear)

**Precipitation:** None (Clear)

**Weather Notes:**



## Field Data Sheet

### Open Field Condition Observations

**Corresponding Point ID(s):** 31

**Anthropogenic Disturbance/Management Practices:** None notable

**Primary Open Field Cover Type:** Row Cropland (Active)

**Estimated Grass Cover (%):** 1-10%

**Estimated Forb Cover (%):** None

**Estimated Woody Vegetation Cover (%):** None

**Estimated Bare Ground (%):** 90-100%

**Estimated Litter Depth (inches):** None

**Average Vegetation Height (inches):** 6-12

**Dominant Plant Species (Common Names):** Corn

**Invasive Plant Species (Common Names):**

**Representative Photo(s):**





## Field Data Sheet





## Field Data Sheet

### **Notes :**

**Do you need to report observations of another open field?**

Yes



## Field Data Sheet

**Corresponding Point ID(s):** 32

**Anthropogenic Disturbance/Management Practices:** None notable

**Primary Open Field Cover Type:** Row Cropland (Active)

**Estimated Grass Cover (%):** 1-10%

**Estimated Forb Cover (%):** None

**Estimated Woody Vegetation Cover (%):** None

**Estimated Bare Ground (%):** 90-100%

**Estimated Litter Depth (inches):** None

**Average Vegetation Height (inches):** 6-12

**Dominant Plant Species (Common Names):** Corn

**Invasive Plant Species (Common Names):**

**Representative Photo(s):**







## Field Data Sheet





## Field Data Sheet

### **Notes :**

**Do you need to report observations of another open field?**

Yes



## Field Data Sheet

**Corresponding Point ID(s):** 33

**Anthropogenic Disturbance/Management Practices:** None notable

**Primary Open Field Cover Type:** Row Cropland (Active)

**Estimated Grass Cover (%):** 1-10%

**Estimated Forb Cover (%):** None

**Estimated Woody Vegetation Cover (%):** None

**Estimated Bare Ground (%):** 90-100%

**Estimated Litter Depth (inches):** None

**Average Vegetation Height (inches):** 6-12

**Dominant Plant Species (Common Names):** Corn

**Invasive Plant Species (Common Names):**

**Representative Photo(s):**







## Field Data Sheet





## Field Data Sheet

### **Notes :**

**Do you need to report observations of another open field?**

Yes





## Field Data Sheet

**Corresponding Point ID(s):** 22

**Anthropogenic Disturbance/Management Practices:** None notable

**Primary Open Field Cover Type:** Row Cropland (Active)

**Estimated Grass Cover (%):** 1-10%

**Estimated Forb Cover (%):** None

**Estimated Woody Vegetation Cover (%):** None

**Estimated Bare Ground (%):** 90-100%

**Estimated Litter Depth (inches):** None

**Average Vegetation Height (inches):** 4-6

**Dominant Plant Species (Common Names):** Corn

**Invasive Plant Species (Common Names):**

**Representative Photo(s):**





## Field Data Sheet





## Field Data Sheet

### **Notes :**

**Do you need to report observations of another open field?**

Yes



## Field Data Sheet

**Corresponding Point ID(s):** 23

**Anthropogenic Disturbance/Management Practices:** None notable

**Primary Open Field Cover Type:** Row Cropland (Active)

**Estimated Grass Cover (%):** 1-10%

**Estimated Forb Cover (%):** None

**Estimated Woody Vegetation Cover (%):** None

**Estimated Bare Ground (%):** 90-100%

**Estimated Litter Depth (inches):** None

**Average Vegetation Height (inches):** 4-6

**Dominant Plant Species (Common Names):** Corn

**Invasive Plant Species (Common Names):**

**Representative Photo(s):**







## Field Data Sheet







## Field Data Sheet

### **Notes :**

**Do you need to report observations of another open field?**

Yes



## Field Data Sheet

**Corresponding Point ID(s):** 24

**Anthropogenic Disturbance/Management Practices:** None notable

**Primary Open Field Cover Type:** Row Cropland (Active)

**Estimated Grass Cover (%):** 1-10%

**Estimated Forb Cover (%):** 1-10%

**Estimated Woody Vegetation Cover (%):** None

**Estimated Bare Ground (%):** 50-90%

**Estimated Litter Depth (inches):** None

**Average Vegetation Height (inches):** 6-12

**Dominant Plant Species (Common Names):** Corn, vetch

**Invasive Plant Species (Common Names):**

**Representative Photo(s):**





## Field Data Sheet





## Field Data Sheet

### **Notes :**

**Do you need to report observations of another open field?**

Yes



## Field Data Sheet

**Corresponding Point ID(s):** 26

**Anthropogenic Disturbance/Management Practices:** None notable

**Primary Open Field Cover Type:** Row Cropland (Active)

**Estimated Grass Cover (%):** 1-10%

**Estimated Forb Cover (%):** None

**Estimated Woody Vegetation Cover (%):** 1-10%

**Estimated Bare Ground (%):** 90-100%

**Estimated Litter Depth (inches):** None

**Average Vegetation Height (inches):** 6-12

**Dominant Plant Species (Common Names):** Corn

**Invasive Plant Species (Common Names):**

**Representative Photo(s):**







## Field Data Sheet





## Field Data Sheet

### **Notes :**

**Do you need to report observations of another open field?**

Yes



## Field Data Sheet

**Corresponding Point ID(s):** 28

**Anthropogenic Disturbance/Management Practices:** None notable

**Primary Open Field Cover Type:** Row Cropland (Active)

**Estimated Grass Cover (%):** 1-10%

**Estimated Forb Cover (%):** None

**Estimated Woody Vegetation Cover (%):** None

**Estimated Bare Ground (%):** 90-100%

**Estimated Litter Depth (inches):** None

**Average Vegetation Height (inches):** 6-12

**Dominant Plant Species (Common Names):** Corn

**Invasive Plant Species (Common Names):**

**Representative Photo(s):**







## Field Data Sheet





## Field Data Sheet

### **Notes :**

**Do you need to report observations of another open field?**

Yes





## Field Data Sheet

**Corresponding Point ID(s):** 27

**Anthropogenic Disturbance/Management Practices:** None notable

**Primary Open Field Cover Type:** Row Cropland (Active)

**Estimated Grass Cover (%):** 1-10%

**Estimated Forb Cover (%):** None

**Estimated Woody Vegetation Cover (%):** None

**Estimated Bare Ground (%):** 90-100%

**Estimated Litter Depth (inches):** None

**Average Vegetation Height (inches):** 6-12

**Dominant Plant Species (Common Names):** Corn

**Invasive Plant Species (Common Names):**

**Representative Photo(s):**





## Field Data Sheet





## Field Data Sheet

### **Notes :**

**Do you need to report observations of another open field?**

Yes



## Field Data Sheet

**Corresponding Point ID(s):** 25

**Anthropogenic Disturbance/Management Practices:** None notable

**Primary Open Field Cover Type:** Field Cropland (including hay, wheat, oats, etc.)

**Estimated Grass Cover (%):** None

**Estimated Forb Cover (%):** 25-50%

**Estimated Woody Vegetation Cover (%):** None

**Estimated Bare Ground (%):** 50-90%

**Estimated Litter Depth (inches):** None

**Average Vegetation Height (inches):** 6-12

**Dominant Plant Species (Common Names):** Vetch, mustard

**Invasive Plant Species (Common Names):**

**Representative Photo(s):**







## Field Data Sheet







## Field Data Sheet

### **Notes :**

**Do you need to report observations of another open field?**

Yes



## Field Data Sheet

**Corresponding Point ID(s):** 34

**Anthropogenic Disturbance/Management Practices:** Traffic Noise

**Primary Open Field Cover Type:** Field Cropland (including hay, wheat, oats, etc.)

**Estimated Grass Cover (%):** 25-50%

**Estimated Forb Cover (%):** 25-50%

**Estimated Woody Vegetation Cover (%):** None

**Estimated Bare Ground (%):** 10-25%

**Estimated Litter Depth (inches):** 0-1"

**Average Vegetation Height (inches):** 12-18

**Dominant Plant Species (Common Names):** Grasses, vetch

**Invasive Plant Species (Common Names):**

**Representative Photo(s):**





## Field Data Sheet





## Field Data Sheet

### **Notes :**

**Do you need to report observations of another open field?**

Yes



## Field Data Sheet

**Corresponding Point ID(s):** 35

**Anthropogenic Disturbance/Management Practices:** Traffic Noise

**Primary Open Field Cover Type:** Row Cropland (Active)

**Estimated Grass Cover (%):** 1-10%

**Estimated Forb Cover (%):** None

**Estimated Woody Vegetation Cover (%):** None

**Estimated Bare Ground (%):** 90-100%

**Estimated Litter Depth (inches):** None

**Average Vegetation Height (inches):** 6-12

**Dominant Plant Species (Common Names):** Corn

**Invasive Plant Species (Common Names):**

**Representative Photo(s):**







## Field Data Sheet





## Field Data Sheet

### **Notes :**

**Do you need to report observations of another open field?**

Yes



## Field Data Sheet

**Corresponding Point ID(s):** 30

**Anthropogenic Disturbance/Management Practices:** Traffic Noise

**Primary Open Field Cover Type:** Field Cropland (including hay, wheat, oats, etc.)

**Estimated Grass Cover (%):** None

**Estimated Forb Cover (%):** 50-90%

**Estimated Woody Vegetation Cover (%):** None

**Estimated Bare Ground (%):** 10-25%

**Estimated Litter Depth (inches):** None

**Average Vegetation Height (inches):** 6-12

**Dominant Plant Species (Common Names):** Vetch

**Invasive Plant Species (Common Names):**

**Representative Photo(s):**







## Field Data Sheet





## Field Data Sheet

### **Notes :**

**Do you need to report observations of another open field?**

Yes





## Field Data Sheet

**Corresponding Point ID(s):** 29

**Anthropogenic Disturbance/Management Practices:** None notable

**Primary Open Field Cover Type:** Field Cropland (including hay, wheat, oats, etc.)

**Estimated Grass Cover (%):** 10-25%

**Estimated Forb Cover (%):** 50-90%

**Estimated Woody Vegetation Cover (%):** None

**Estimated Bare Ground (%):** 10-25%

**Estimated Litter Depth (inches):** 0-1"

**Average Vegetation Height (inches):** 6-12

**Dominant Plant Species (Common Names):** Vetch, grasses

**Invasive Plant Species (Common Names):**

**Representative Photo(s):**





## Field Data Sheet





## Field Data Sheet

### **Notes :**

**Do you need to report observations of another open field?**

Yes



## Field Data Sheet

**Corresponding Point ID(s):** 38

**Anthropogenic Disturbance/Management Practices:** None notable

**Primary Open Field Cover Type:** Field Cropland (including hay, wheat, oats, etc.)

**Estimated Grass Cover (%):** None

**Estimated Forb Cover (%):** 50-90%

**Estimated Woody Vegetation Cover (%):** None

**Estimated Bare Ground (%):** 25-50%

**Estimated Litter Depth (inches):** None

**Average Vegetation Height (inches):** 6-12

**Dominant Plant Species (Common Names):** Vetch

**Invasive Plant Species (Common Names):**

**Representative Photo(s):**







## Field Data Sheet







## Field Data Sheet

### **Notes :**

**Do you need to report observations of another open field?**

Yes



## Field Data Sheet

**Corresponding Point ID(s):** 37

**Anthropogenic Disturbance/Management Practices:** None notable

**Primary Open Field Cover Type:** Field Cropland (including hay, wheat, oats, etc.)

**Estimated Grass Cover (%):** None

**Estimated Forb Cover (%):** 25-50%

**Estimated Woody Vegetation Cover (%):** None

**Estimated Bare Ground (%):** 25-50%

**Estimated Litter Depth (inches):** None

**Average Vegetation Height (inches):** 6-12

**Dominant Plant Species (Common Names):** Vetch

**Invasive Plant Species (Common Names):**

**Representative Photo(s):**





## Field Data Sheet





## Field Data Sheet

### **Notes :**

**Do you need to report observations of another open field?**

Yes



## Field Data Sheet

**Corresponding Point ID(s):** 36

**Anthropogenic Disturbance/Management Practices:** None notable

**Primary Open Field Cover Type:** Field Cropland (including hay, wheat, oats, etc.)

**Estimated Grass Cover (%):** 10-25%

**Estimated Forb Cover (%):** 50-90%

**Estimated Woody Vegetation Cover (%):** None

**Estimated Bare Ground (%):** 25-50%

**Estimated Litter Depth (inches):** None

**Average Vegetation Height (inches):** 6-12

**Dominant Plant Species (Common Names):** Vetch

**Invasive Plant Species (Common Names):**

**Representative Photo(s):**







## Field Data Sheet





## Field Data Sheet

### **Notes :**

**Do you need to report observations of another open field?**

Yes



## Field Data Sheet

**Corresponding Point ID(s):** 21

**Anthropogenic Disturbance/Management Practices:** None notable

**Primary Open Field Cover Type:** Row Cropland (Active)

**Estimated Grass Cover (%):** None

**Estimated Forb Cover (%):** None

**Estimated Woody Vegetation Cover (%):** None

**Estimated Bare Ground (%):** 90-100%

**Estimated Litter Depth (inches):** None

**Average Vegetation Height (inches):** 0 (None)

**Dominant Plant Species (Common Names):**

**Invasive Plant Species (Common Names):**

**Representative Photo(s):**







## Field Data Sheet





## Field Data Sheet

### **Notes :**

**Do you need to report observations of another open field?**

Yes





## Field Data Sheet

**Corresponding Point ID(s):** 20

**Anthropogenic Disturbance/Management Practices:** None notable

**Primary Open Field Cover Type:** Field Cropland (including hay, wheat, oats, etc.)

**Estimated Grass Cover (%):** None

**Estimated Forb Cover (%):** 1-10%

**Estimated Woody Vegetation Cover (%):** None

**Estimated Bare Ground (%):** 90-100%

**Estimated Litter Depth (inches):** None

**Average Vegetation Height (inches):** 0-2

**Dominant Plant Species (Common Names):** Vetch

**Invasive Plant Species (Common Names):**

**Representative Photo(s):**





## Field Data Sheet





## Field Data Sheet

### **Notes :**

**Do you need to report observations of another open field?**

Yes



## Field Data Sheet

**Corresponding Point ID(s):** 51

**Anthropogenic Disturbance/Management Practices:** None notable

**Primary Open Field Cover Type:** Field Cropland (including hay, wheat, oats, etc.)

**Estimated Grass Cover (%):** 50-90%

**Estimated Forb Cover (%):** 1-10%

**Estimated Woody Vegetation Cover (%):** None

**Estimated Bare Ground (%):** 1-10%

**Estimated Litter Depth (inches):** 0-1"

**Average Vegetation Height (inches):** 2-4

**Dominant Plant Species (Common Names):** Grasses

**Invasive Plant Species (Common Names):**

**Representative Photo(s):**







## Field Data Sheet







## Field Data Sheet

### **Notes :**

**Do you need to report observations of another open field?**

No



## Field Data Sheet

### Weather Conditions at End of Survey

**Temperature (°F):** 74

**Wind Speed (mph):** 8 – 12 (Gentle Breeze; Leaves and Small twigs in constant motion)

**Wind Direction:** SE

**Cloud Cover:** Overcast (90-100%)

**Visibility:** Good (10+ miles; clear)

**Precipitation:** None (Clear)

**Weather Notes:**

**Were there any notable weather events/changes during the survey?** No

### Bird Observation Summary

**Were any Endangered/Threatened Species observed?**

No

**Were any Species of Special Concern observed?**

Yes

**Were probable, possible, or confirmed breeding behaviors observed for any Listed Species (Endangered/Threatened/Special Concern)?**

No

**Were there additional photos documenting birds observed, habitat conditions, and/or other features of interest?**

No

**Additional Photo(s):**

**Were any alternate point count survey locations used due to access or visual constraints?**

No



## Field Data Sheet

### **Alternate Point Count Survey Locations:**

### **Incidental bird species observed outside of timed point count surveys (Alpha Codes or Common Names):**

BHVI

### **Overall Survey Notes:**

Bird detection and activity reduced by high wind speed



## Field Data Sheet

### Breeding Bird Survey

Submitted By: mbaber@edrdpc.com

Submitted Time: June 14, 2023 12:35 PM

### Survey Information

**Project Name:** Agricola Wind

**Survey Date:** June 14, 2023

**Surveyor Name:** Max Baber

**Points Surveyed:** 52-55, 55.1, 56-61

**Survey Start Time:** 08:30

**Survey End Time:** 10:51

### Weather Conditions at Start of Survey

**Temperature (°F):** 55

**Wind Speed (mph):** 4 – 7 (Light Breeze; Leaves rustle)

**Wind Direction:** ESE

**Cloud Cover:** Overcast (90-100%)

**Visibility:** Good (10+ miles; clear)

**Precipitation:** Rain (Intermittent/Light)

**Weather Notes:**



## Field Data Sheet

### Open Field Condition Observations

**Corresponding Point ID(s):** 55.1

**Anthropogenic Disturbance/Management Practices:** None notable

**Primary Open Field Cover Type:** Pastureland

**Estimated Grass Cover (%):** 50-90%

**Estimated Forb Cover (%):** 10-25%

**Estimated Woody Vegetation Cover (%):** None

**Estimated Bare Ground (%):** None

**Estimated Litter Depth (inches):** 0-1"

**Average Vegetation Height (inches):** 6-12

**Dominant Plant Species (Common Names):** Grasses

**Invasive Plant Species (Common Names):**

**Representative Photo(s):**







## Field Data Sheet





## Field Data Sheet

### **Notes :**

**Do you need to report observations of another open field?**

Yes



## Field Data Sheet

**Corresponding Point ID(s):** 55

**Anthropogenic Disturbance/Management Practices:** None notable

**Primary Open Field Cover Type:** Row Cropland (Active)

**Estimated Grass Cover (%):** 1-10%

**Estimated Forb Cover (%):** None

**Estimated Woody Vegetation Cover (%):** None

**Estimated Bare Ground (%):** 90-100%

**Estimated Litter Depth (inches):** None

**Average Vegetation Height (inches):** 4-6

**Dominant Plant Species (Common Names):** Corn

**Invasive Plant Species (Common Names):**

**Representative Photo(s):**







## Field Data Sheet





## Field Data Sheet

### **Notes :**

**Do you need to report observations of another open field?**

Yes





## Field Data Sheet

**Corresponding Point ID(s):** 54

**Anthropogenic Disturbance/Management Practices:** None notable

**Primary Open Field Cover Type:** Row Cropland (Active)

**Estimated Grass Cover (%):** 10-25%

**Estimated Forb Cover (%):** None

**Estimated Woody Vegetation Cover (%):** None

**Estimated Bare Ground (%):** 50-90%

**Estimated Litter Depth (inches):** None

**Average Vegetation Height (inches):** 4-6

**Dominant Plant Species (Common Names):** Corn

**Invasive Plant Species (Common Names):**

**Representative Photo(s):**





## Field Data Sheet





## Field Data Sheet

### **Notes :**

**Do you need to report observations of another open field?**

Yes



## Field Data Sheet

**Corresponding Point ID(s):** 57

**Anthropogenic Disturbance/Management Practices:** None notable

**Primary Open Field Cover Type:** Row Cropland (Active)

**Estimated Grass Cover (%):** 1-10%

**Estimated Forb Cover (%):** None

**Estimated Woody Vegetation Cover (%):** None

**Estimated Bare Ground (%):** 90-100%

**Estimated Litter Depth (inches):** None

**Average Vegetation Height (inches):** 6-12

**Dominant Plant Species (Common Names):** Corn

**Invasive Plant Species (Common Names):**

**Representative Photo(s):**







## Field Data Sheet







## Field Data Sheet

### **Notes :**

**Do you need to report observations of another open field?**

Yes



## Field Data Sheet

**Corresponding Point ID(s):** 56

**Anthropogenic Disturbance/Management Practices:** None notable

**Primary Open Field Cover Type:** Row Cropland (Active)

**Estimated Grass Cover (%):** 1-10%

**Estimated Forb Cover (%):** None

**Estimated Woody Vegetation Cover (%):** None

**Estimated Bare Ground (%):** 90-100%

**Estimated Litter Depth (inches):** None

**Average Vegetation Height (inches):** 4-6

**Dominant Plant Species (Common Names):** Corn

**Invasive Plant Species (Common Names):**

**Representative Photo(s):**





## Field Data Sheet





## Field Data Sheet

### **Notes :**

**Do you need to report observations of another open field?**

Yes



## Field Data Sheet

**Corresponding Point ID(s):** 58

**Anthropogenic Disturbance/Management Practices:** Traffic Noise

**Primary Open Field Cover Type:** Field Cropland (including hay, wheat, oats, etc.)

**Estimated Grass Cover (%):** 50-90%

**Estimated Forb Cover (%):** 25-50%

**Estimated Woody Vegetation Cover (%):** None

**Estimated Bare Ground (%):** 1-10%

**Estimated Litter Depth (inches):** None

**Average Vegetation Height (inches):** 6-12

**Dominant Plant Species (Common Names):** Grasses, vetch

**Invasive Plant Species (Common Names):**

**Representative Photo(s):**







## Field Data Sheet





## Field Data Sheet

### **Notes :**

**Do you need to report observations of another open field?**

Yes



## Field Data Sheet

**Corresponding Point ID(s):** 52

**Anthropogenic Disturbance/Management Practices:** Traffic Noise

**Primary Open Field Cover Type:** Row Cropland (Active)

**Estimated Grass Cover (%):** None

**Estimated Forb Cover (%):** 1-10%

**Estimated Woody Vegetation Cover (%):** None

**Estimated Bare Ground (%):** 90-100%

**Estimated Litter Depth (inches):** None

**Average Vegetation Height (inches):** 0-2

**Dominant Plant Species (Common Names):** Soybean

**Invasive Plant Species (Common Names):**

**Representative Photo(s):**







## Field Data Sheet





## Field Data Sheet

### **Notes :**

**Do you need to report observations of another open field?**

Yes





## Field Data Sheet

**Corresponding Point ID(s):** 53

**Anthropogenic Disturbance/Management Practices:** Traffic Noise

**Primary Open Field Cover Type:** Row Cropland (Active)

**Estimated Grass Cover (%):** 1-10%

**Estimated Forb Cover (%):** None

**Estimated Woody Vegetation Cover (%):** None

**Estimated Bare Ground (%):** 90-100%

**Estimated Litter Depth (inches):** None

**Average Vegetation Height (inches):** 2-4

**Dominant Plant Species (Common Names):** Corn

**Invasive Plant Species (Common Names):**

**Representative Photo(s):**





## Field Data Sheet





## Field Data Sheet

### **Notes :**

**Do you need to report observations of another open field?**

Yes



## Field Data Sheet

**Corresponding Point ID(s):** 59

**Anthropogenic Disturbance/Management Practices:** Traffic Noise

**Primary Open Field Cover Type:** Field Cropland (including hay, wheat, oats, etc.)

**Estimated Grass Cover (%):** 90-100%

**Estimated Forb Cover (%):** 1-10%

**Estimated Woody Vegetation Cover (%):** None

**Estimated Bare Ground (%):** None

**Estimated Litter Depth (inches):** 0-1"

**Average Vegetation Height (inches):** 6-12

**Dominant Plant Species (Common Names):** Grasses, wheat

**Invasive Plant Species (Common Names):**

**Representative Photo(s):**







## Field Data Sheet







## Field Data Sheet

### **Notes :**

**Do you need to report observations of another open field?**

Yes



## Field Data Sheet

**Corresponding Point ID(s):** 60

**Anthropogenic Disturbance/Management Practices:** Traffic Noise

**Primary Open Field Cover Type:** Field Cropland (including hay, wheat, oats, etc.)

**Estimated Grass Cover (%):** 90-100%

**Estimated Forb Cover (%):** None

**Estimated Woody Vegetation Cover (%):** None

**Estimated Bare Ground (%):** None

**Estimated Litter Depth (inches):** None

**Average Vegetation Height (inches):** 30-36

**Dominant Plant Species (Common Names):** Wheat, grasses

**Invasive Plant Species (Common Names):**

**Representative Photo(s):**





## Field Data Sheet





## Field Data Sheet

### **Notes :**

**Do you need to report observations of another open field?**

Yes



## Field Data Sheet

**Corresponding Point ID(s):** 61

**Anthropogenic Disturbance/Management Practices:** Traffic Noise

**Primary Open Field Cover Type:** Field Cropland (including hay, wheat, oats, etc.)

**Estimated Grass Cover (%):** 90-100%

**Estimated Forb Cover (%):** None

**Estimated Woody Vegetation Cover (%):** None

**Estimated Bare Ground (%):** None

**Estimated Litter Depth (inches):** None

**Average Vegetation Height (inches):** 30-36

**Dominant Plant Species (Common Names):** Wheat, grasses

**Invasive Plant Species (Common Names):**

**Representative Photo(s):**







## Field Data Sheet





## Field Data Sheet

### **Notes :**

**Do you need to report observations of another open field?**

No



## Field Data Sheet

### Weather Conditions at End of Survey

**Temperature (°F):** 58

**Wind Speed (mph):** 8 – 12 (Gentle Breeze; Leaves and Small twigs in constant motion)

**Wind Direction:** SE

**Cloud Cover:** Overcast (90-100%)

**Visibility:** Good (10+ miles; clear)

**Precipitation:** None (Clear)

**Weather Notes:**

**Were there any notable weather events/changes during the survey?** Yes

### Bird Observation Summary

**Were any Endangered/Threatened Species observed?**

No

**Were any Species of Special Concern observed?**

Yes

**Were probable, possible, or confirmed breeding behaviors observed for any Listed Species (Endangered/Threatened/Special Concern)?**

No

**Were there additional photos documenting birds observed, habitat conditions, and/or other features of interest?**

No

**Additional Photo(s):**

**Were any alternate point count survey locations used due to access or visual constraints?**

No



## Field Data Sheet

### **Alternate Point Count Survey Locations:**

### **Incidental bird species observed outside of timed point count surveys (Alpha Codes or Common Names):**

EAKI

### **Overall Survey Notes:**



## Field Data Sheet

### Breeding Bird Survey

Submitted By: mbaber@edrdpc.com

Submitted Time: June 15, 2023 1:47 PM

### Survey Information

**Project Name:** Agricola Wind

**Survey Date:** June 15, 2023

**Surveyor Name:** Max Baber

**Points Surveyed:** 16, 19, 39-50, 55.2, 58.2, 58.1, 62, 63

**Survey Start Time:** 05:10

**Survey End Time:** 10:52

### Weather Conditions at Start of Survey

**Temperature (°F):** 54

**Wind Speed (mph):** 1 – 3 (Light Air; Smoke drifts)

**Wind Direction:** WNW

**Cloud Cover:** Overcast (90-100%)

**Visibility:** Good (10+ miles; clear)

**Precipitation:** None (Clear)

**Weather Notes:**





## Field Data Sheet

### Open Field Condition Observations

**Corresponding Point ID(s):** 58.2

**Anthropogenic Disturbance/Management Practices:** Traffic Noise

**Primary Open Field Cover Type:** Field Cropland (including hay, wheat, oats, etc.)

**Estimated Grass Cover (%):** 90-100%

**Estimated Forb Cover (%):** 1-10%

**Estimated Woody Vegetation Cover (%):** None

**Estimated Bare Ground (%):** None

**Estimated Litter Depth (inches):** None

**Average Vegetation Height (inches):** 30-36

**Dominant Plant Species (Common Names):** Wheat

**Invasive Plant Species (Common Names):**

**Representative Photo(s):**





## Field Data Sheet





## Field Data Sheet

### **Notes :**

**Do you need to report observations of another open field?**

Yes



## Field Data Sheet

**Corresponding Point ID(s):** 58.1

**Anthropogenic Disturbance/Management Practices:** Traffic Noise

**Primary Open Field Cover Type:** Field Cropland (including hay, wheat, oats, etc.)

**Estimated Grass Cover (%):** 50-90%

**Estimated Forb Cover (%):** 25-50%

**Estimated Woody Vegetation Cover (%):** None

**Estimated Bare Ground (%):** 1-10%

**Estimated Litter Depth (inches):** 0-1"

**Average Vegetation Height (inches):** 18-24

**Dominant Plant Species (Common Names):** Wheat, grasses, vetch

**Invasive Plant Species (Common Names):**

**Representative Photo(s):**







## Field Data Sheet







## Field Data Sheet

### **Notes :**

**Do you need to report observations of another open field?**

Yes



## Field Data Sheet

**Corresponding Point ID(s):** 55.2

**Anthropogenic Disturbance/Management Practices:** Traffic Noise

**Primary Open Field Cover Type:** Row Cropland (Active)

**Estimated Grass Cover (%):** 10-25%

**Estimated Forb Cover (%):** 10-25%

**Estimated Woody Vegetation Cover (%):** None

**Estimated Bare Ground (%):** 50-90%

**Estimated Litter Depth (inches):** None

**Average Vegetation Height (inches):** 6-12

**Dominant Plant Species (Common Names):** Corn

**Invasive Plant Species (Common Names):**

**Representative Photo(s):**





## Field Data Sheet





## Field Data Sheet

### **Notes :**

**Do you need to report observations of another open field?**

Yes



## Field Data Sheet

**Corresponding Point ID(s):** 62

**Anthropogenic Disturbance/Management Practices:** None notable

**Primary Open Field Cover Type:** Row Cropland (Active)

**Estimated Grass Cover (%):** 10-25%

**Estimated Forb Cover (%):** None

**Estimated Woody Vegetation Cover (%):** None

**Estimated Bare Ground (%):** 50-90%

**Estimated Litter Depth (inches):** None

**Average Vegetation Height (inches):** 6-12

**Dominant Plant Species (Common Names):** Corn

**Invasive Plant Species (Common Names):**

**Representative Photo(s):**







## Field Data Sheet





## Field Data Sheet

### **Notes :**

**Do you need to report observations of another open field?**

Yes



## Field Data Sheet

**Corresponding Point ID(s):** 63

**Anthropogenic Disturbance/Management Practices:** None notable

**Primary Open Field Cover Type:** Field Cropland (including hay, wheat, oats, etc.)

**Estimated Grass Cover (%):** 25-50%

**Estimated Forb Cover (%):** 50-90%

**Estimated Woody Vegetation Cover (%):** None

**Estimated Bare Ground (%):** None

**Estimated Litter Depth (inches):** 1-3"

**Average Vegetation Height (inches):** 18-24

**Dominant Plant Species (Common Names):** Clover, goldenrod, trefoil, bedstraw

**Invasive Plant Species (Common Names):**

**Representative Photo(s):**







## Field Data Sheet





## Field Data Sheet

### **Notes :**

**Do you need to report observations of another open field?**

Yes





## Field Data Sheet

**Corresponding Point ID(s):** 49

**Anthropogenic Disturbance/Management Practices:** Traffic Noise

**Primary Open Field Cover Type:** Row Cropland (Active)

**Estimated Grass Cover (%):** 1-10%

**Estimated Forb Cover (%):** None

**Estimated Woody Vegetation Cover (%):** None

**Estimated Bare Ground (%):** 90-100%

**Estimated Litter Depth (inches):** None

**Average Vegetation Height (inches):** 4-6

**Dominant Plant Species (Common Names):** Corn

**Invasive Plant Species (Common Names):**

**Representative Photo(s):**





## Field Data Sheet





## Field Data Sheet

### **Notes :**

**Do you need to report observations of another open field?**

Yes



## Field Data Sheet

**Corresponding Point ID(s):** 50

**Anthropogenic Disturbance/Management Practices:** Traffic Noise

**Primary Open Field Cover Type:** Row Cropland (Active)

**Estimated Grass Cover (%):** 1-10%

**Estimated Forb Cover (%):** None

**Estimated Woody Vegetation Cover (%):** None

**Estimated Bare Ground (%):** 90-100%

**Estimated Litter Depth (inches):** None

**Average Vegetation Height (inches):** 4-6

**Dominant Plant Species (Common Names):** Corn

**Invasive Plant Species (Common Names):**

**Representative Photo(s):**







## Field Data Sheet







## Field Data Sheet

### **Notes :**

**Do you need to report observations of another open field?**

Yes



## Field Data Sheet

**Corresponding Point ID(s):** 39

**Anthropogenic Disturbance/Management Practices:** Utility Work In Progress

**Primary Open Field Cover Type:** Field Cropland (including hay, wheat, oats, etc.)

**Estimated Grass Cover (%):** 25-50%

**Estimated Forb Cover (%):** 50-90%

**Estimated Woody Vegetation Cover (%):** None

**Estimated Bare Ground (%):** 1-10%

**Estimated Litter Depth (inches):** None

**Average Vegetation Height (inches):** 4-6

**Dominant Plant Species (Common Names):** Clover, grasses

**Invasive Plant Species (Common Names):**

**Representative Photo(s):**





## Field Data Sheet





## Field Data Sheet

### **Notes :**

**Do you need to report observations of another open field?**

Yes



## Field Data Sheet

**Corresponding Point ID(s):** 40.1

**Anthropogenic Disturbance/Management Practices:** None notable

**Primary Open Field Cover Type:** Row Cropland (Active)

**Estimated Grass Cover (%):** 1-10%

**Estimated Forb Cover (%):** 1-10%

**Estimated Woody Vegetation Cover (%):** None

**Estimated Bare Ground (%):** 90-100%

**Estimated Litter Depth (inches):** None

**Average Vegetation Height (inches):** 6-12

**Dominant Plant Species (Common Names):** Corn

**Invasive Plant Species (Common Names):**

**Representative Photo(s):**







## Field Data Sheet





## Field Data Sheet

### **Notes :**

**Do you need to report observations of another open field?**

Yes



## Field Data Sheet

**Corresponding Point ID(s):** 40

**Anthropogenic Disturbance/Management Practices:** Traffic Noise

**Primary Open Field Cover Type:** Row Cropland (Active)

**Estimated Grass Cover (%):** 1-10%

**Estimated Forb Cover (%):** None

**Estimated Woody Vegetation Cover (%):** None

**Estimated Bare Ground (%):** 90-100%

**Estimated Litter Depth (inches):** None

**Average Vegetation Height (inches):** 4-6

**Dominant Plant Species (Common Names):** Corn

**Invasive Plant Species (Common Names):**

**Representative Photo(s):**







## Field Data Sheet





## Field Data Sheet

### **Notes :**

**Do you need to report observations of another open field?**

Yes





## Field Data Sheet

**Corresponding Point ID(s):** 41

**Anthropogenic Disturbance/Management Practices:** Utility Work In Progress

**Primary Open Field Cover Type:** Row Cropland (Active)

**Estimated Grass Cover (%):** 1-10%

**Estimated Forb Cover (%):** None

**Estimated Woody Vegetation Cover (%):** None

**Estimated Bare Ground (%):** 90-100%

**Estimated Litter Depth (inches):** None

**Average Vegetation Height (inches):** 4-6

**Dominant Plant Species (Common Names):** Corn

**Invasive Plant Species (Common Names):**

**Representative Photo(s):**





## Field Data Sheet





## Field Data Sheet

### **Notes :**

**Do you need to report observations of another open field?**

Yes



## Field Data Sheet

**Corresponding Point ID(s):** 42

**Anthropogenic Disturbance/Management Practices:** Utility Work In Progress

**Primary Open Field Cover Type:** Row Cropland (Active)

**Estimated Grass Cover (%):** 1-10%

**Estimated Forb Cover (%):** 1-10%

**Estimated Woody Vegetation Cover (%):** None

**Estimated Bare Ground (%):** 90-100%

**Estimated Litter Depth (inches):** None

**Average Vegetation Height (inches):** 6-12

**Dominant Plant Species (Common Names):** Corn

**Invasive Plant Species (Common Names):**

**Representative Photo(s):**







## Field Data Sheet







## Field Data Sheet

### **Notes :**

**Do you need to report observations of another open field?**

Yes



## Field Data Sheet

**Corresponding Point ID(s):** 19

**Anthropogenic Disturbance/Management Practices:** None notable

**Primary Open Field Cover Type:** Row Cropland (Active)

**Estimated Grass Cover (%):** None

**Estimated Forb Cover (%):** None

**Estimated Woody Vegetation Cover (%):** None

**Estimated Bare Ground (%):** 90-100%

**Estimated Litter Depth (inches):** None

**Average Vegetation Height (inches):** 0 (None)

**Dominant Plant Species (Common Names):**

**Invasive Plant Species (Common Names):**

**Representative Photo(s):**





## Field Data Sheet





## Field Data Sheet

### **Notes :**

**Do you need to report observations of another open field?**

Yes



## Field Data Sheet

**Corresponding Point ID(s):** 16

**Anthropogenic Disturbance/Management Practices:** None notable

**Primary Open Field Cover Type:** Row Cropland (Active)

**Estimated Grass Cover (%):** None

**Estimated Forb Cover (%):** None

**Estimated Woody Vegetation Cover (%):** None

**Estimated Bare Ground (%):** None

**Estimated Litter Depth (inches):** None

**Average Vegetation Height (inches):** 0 (None)

**Dominant Plant Species (Common Names):**

**Invasive Plant Species (Common Names):**

**Representative Photo(s):**







## Field Data Sheet





## Field Data Sheet

### **Notes :**

**Do you need to report observations of another open field?**

Yes



## Field Data Sheet

**Corresponding Point ID(s):** 48

**Anthropogenic Disturbance/Management Practices:** None notable

**Primary Open Field Cover Type:** Field Cropland (including hay, wheat, oats, etc.)

**Estimated Grass Cover (%):** 90-100%

**Estimated Forb Cover (%):** None

**Estimated Woody Vegetation Cover (%):** None

**Estimated Bare Ground (%):** None

**Estimated Litter Depth (inches):** None

**Average Vegetation Height (inches):** 54-60

**Dominant Plant Species (Common Names):** Wheat

**Invasive Plant Species (Common Names):**

**Representative Photo(s):**







## Field Data Sheet





## Field Data Sheet

### **Notes :**

**Do you need to report observations of another open field?**

Yes





## Field Data Sheet

**Corresponding Point ID(s):** 43

**Anthropogenic Disturbance/Management Practices:** Traffic Noise

**Primary Open Field Cover Type:** Field Cropland (including hay, wheat, oats, etc.)

**Estimated Grass Cover (%):** 90-100%

**Estimated Forb Cover (%):** None

**Estimated Woody Vegetation Cover (%):** None

**Estimated Bare Ground (%):** None

**Estimated Litter Depth (inches):** None

**Average Vegetation Height (inches):** 54-60

**Dominant Plant Species (Common Names):** Wheat

**Invasive Plant Species (Common Names):**

**Representative Photo(s):**





## Field Data Sheet





## Field Data Sheet

### **Notes :**

**Do you need to report observations of another open field?**

Yes



## Field Data Sheet

**Corresponding Point ID(s):** 44

**Anthropogenic Disturbance/Management Practices:** Traffic Noise

**Primary Open Field Cover Type:** Field Cropland (including hay, wheat, oats, etc.)

**Estimated Grass Cover (%):** 50-90%

**Estimated Forb Cover (%):** None

**Estimated Woody Vegetation Cover (%):** None

**Estimated Bare Ground (%):** 1-10%

**Estimated Litter Depth (inches):** None

**Average Vegetation Height (inches):** 48-54

**Dominant Plant Species (Common Names):** Wheat

**Invasive Plant Species (Common Names):**

**Representative Photo(s):**







## Field Data Sheet







## Field Data Sheet

### **Notes :**

**Do you need to report observations of another open field?**

Yes



## Field Data Sheet

**Corresponding Point ID(s):** 45

**Anthropogenic Disturbance/Management Practices:** Traffic Noise

**Primary Open Field Cover Type:** Field Cropland (including hay, wheat, oats, etc.)

**Estimated Grass Cover (%):** 90-100%

**Estimated Forb Cover (%):** None

**Estimated Woody Vegetation Cover (%):** None

**Estimated Bare Ground (%):** None

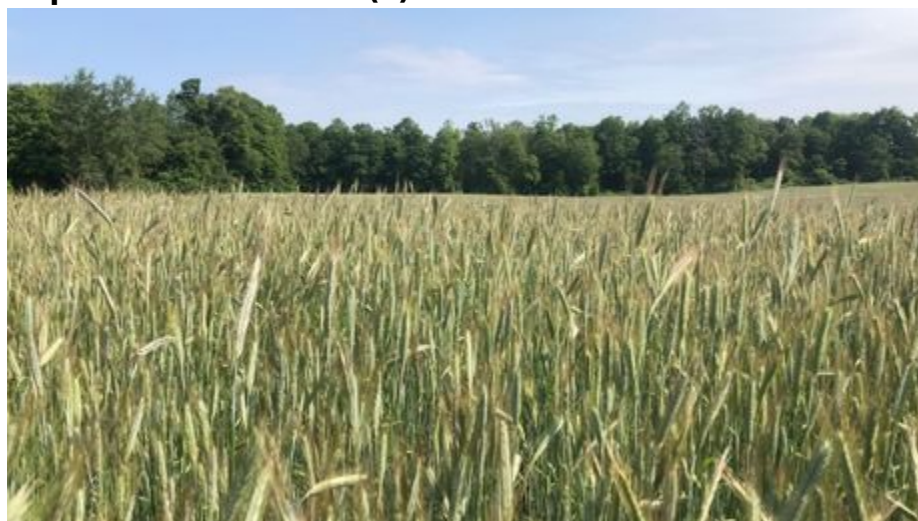
**Estimated Litter Depth (inches):** None

**Average Vegetation Height (inches):** 54-60

**Dominant Plant Species (Common Names):** Wheat

**Invasive Plant Species (Common Names):**

**Representative Photo(s):**





## Field Data Sheet





## Field Data Sheet

### **Notes :**

**Do you need to report observations of another open field?**

Yes



## Field Data Sheet

**Corresponding Point ID(s):** 46

**Anthropogenic Disturbance/Management Practices:** None notable

**Primary Open Field Cover Type:** Field Cropland (including hay, wheat, oats, etc.)

**Estimated Grass Cover (%):** 90-100%

**Estimated Forb Cover (%):** None

**Estimated Woody Vegetation Cover (%):** None

**Estimated Bare Ground (%):** None

**Estimated Litter Depth (inches):** None

**Average Vegetation Height (inches):** 60+

**Dominant Plant Species (Common Names):** Wheat

**Invasive Plant Species (Common Names):**

**Representative Photo(s):**







## Field Data Sheet





## Field Data Sheet

### **Notes :**

**Do you need to report observations of another open field?**

Yes



## Field Data Sheet

**Corresponding Point ID(s):** 47

**Anthropogenic Disturbance/Management Practices:** None notable

**Primary Open Field Cover Type:** Row Cropland (Active)

**Estimated Grass Cover (%):** 1-10%

**Estimated Forb Cover (%):** 1-10%

**Estimated Woody Vegetation Cover (%):** None

**Estimated Bare Ground (%):** 90-100%

**Estimated Litter Depth (inches):** None

**Average Vegetation Height (inches):** 4-6

**Dominant Plant Species (Common Names):** Corn, goldenrod

**Invasive Plant Species (Common Names):**

**Representative Photo(s):**







## Field Data Sheet





## Field Data Sheet

### **Notes :**

**Do you need to report observations of another open field?**

No





## Field Data Sheet

### Weather Conditions at End of Survey

**Temperature (°F):** 64

**Wind Speed (mph):** 4 – 7 (Light Breeze; Leaves rustle)

**Wind Direction:** WNW

**Cloud Cover:** Mostly Clear (10-25%)

**Visibility:** Good (10+ miles; clear)

**Precipitation:** None (Clear)

**Weather Notes:**

**Were there any notable weather events/changes during the survey?** No

### Bird Observation Summary

**Were any Endangered/Threatened Species observed?**

No

**Were any Species of Special Concern observed?**

Yes

**Were probable, possible, or confirmed breeding behaviors observed for any Listed Species (Endangered/Threatened/Special Concern)?**

No

**Were there additional photos documenting birds observed, habitat conditions, and/or other features of interest?**

No

**Additional Photo(s):**

**Were any alternate point count survey locations used due to access or visual constraints?**

No

**Alternate Point Count Survey Locations:**



## Field Data Sheet

**Incidental bird species observed outside of timed point count surveys  
(Alpha Codes or Common Names):**

GHOW

**Overall Survey Notes:**



## Field Data Sheet

### Breeding Bird Survey

Submitted By: bsmith@edrdpc.com

Submitted Time: June 16, 2023 10:24 AM

### Survey Information

**Project Name:** Agricola Wind

**Survey Date:** June 16, 2023

**Surveyor Name:** Brooke Smith

**Points Surveyed:** 1-15, 17, 18

**Survey Start Time:** 05:08

**Survey End Time:** 10:10

### Weather Conditions at Start of Survey

**Temperature (°F):** 57

**Wind Speed (mph):** 1 – 3 (Light Air; Smoke drifts)

**Wind Direction:** E

**Cloud Cover:** Overcast (90-100%)

**Visibility:** Good (10+ miles; clear)

**Precipitation:** None (Clear)

**Weather Notes:**



## Field Data Sheet

### Open Field Condition Observations

**Corresponding Point ID(s):** 11

**Anthropogenic Disturbance/Management Practices:** None notable

**Primary Open Field Cover Type:** Field Cropland (including hay, wheat, oats, etc.)

**Estimated Grass Cover (%):** 90-100%

**Estimated Forb Cover (%):** None

**Estimated Woody Vegetation Cover (%):** None

**Estimated Bare Ground (%):** None

**Estimated Litter Depth (inches):** None

**Average Vegetation Height (inches):** 4-6

**Dominant Plant Species (Common Names):** Grass

**Invasive Plant Species (Common Names):**

**Representative Photo(s):**





## Field Data Sheet







## Field Data Sheet

### **Notes :**

**Do you need to report observations of another open field?**

Yes



## Field Data Sheet

**Corresponding Point ID(s):** 12

**Anthropogenic Disturbance/Management Practices:** None notable

**Primary Open Field Cover Type:** Field Cropland (including hay, wheat, oats, etc.)

**Estimated Grass Cover (%):** 90-100%

**Estimated Forb Cover (%):** None

**Estimated Woody Vegetation Cover (%):** None

**Estimated Bare Ground (%):** None

**Estimated Litter Depth (inches):** None

**Average Vegetation Height (inches):** 4-6

**Dominant Plant Species (Common Names):** Grass

**Invasive Plant Species (Common Names):**

**Representative Photo(s):**





## Field Data Sheet





## Field Data Sheet

### **Notes :**

**Do you need to report observations of another open field?**

Yes



## Field Data Sheet

**Corresponding Point ID(s):** 14

**Anthropogenic Disturbance/Management Practices:** None notable

**Primary Open Field Cover Type:** Field Cropland (including hay, wheat, oats, etc.)

**Estimated Grass Cover (%):** 90-100%

**Estimated Forb Cover (%):** None

**Estimated Woody Vegetation Cover (%):** None

**Estimated Bare Ground (%):** None

**Estimated Litter Depth (inches):** None

**Average Vegetation Height (inches):** 4-6

**Dominant Plant Species (Common Names):** Grass

**Invasive Plant Species (Common Names):**

**Representative Photo(s):**







## Field Data Sheet





## Field Data Sheet

### **Notes :**

**Do you need to report observations of another open field?**

Yes



## Field Data Sheet

**Corresponding Point ID(s):** 15

**Anthropogenic Disturbance/Management Practices:** None notable

**Primary Open Field Cover Type:** Field Cropland (including hay, wheat, oats, etc.)

**Estimated Grass Cover (%):** 90-100%

**Estimated Forb Cover (%):** None

**Estimated Woody Vegetation Cover (%):** None

**Estimated Bare Ground (%):** None

**Estimated Litter Depth (inches):** None

**Average Vegetation Height (inches):** 4-6

**Dominant Plant Species (Common Names):** Grass

**Invasive Plant Species (Common Names):**

**Representative Photo(s):**





## Field Data Sheet





## Field Data Sheet

### **Notes :**

**Do you need to report observations of another open field?**

Yes





## Field Data Sheet

**Corresponding Point ID(s):** 13

**Anthropogenic Disturbance/Management Practices:** None notable

**Primary Open Field Cover Type:** Field Cropland (including hay, wheat, oats, etc.)

**Estimated Grass Cover (%):** 90-100%

**Estimated Forb Cover (%):** None

**Estimated Woody Vegetation Cover (%):** None

**Estimated Bare Ground (%):** None

**Estimated Litter Depth (inches):** None

**Average Vegetation Height (inches):** 4-6

**Dominant Plant Species (Common Names):** Grass

**Invasive Plant Species (Common Names):**

**Representative Photo(s):**





## Field Data Sheet





## Field Data Sheet

### **Notes :**

**Do you need to report observations of another open field?**

Yes



## Field Data Sheet

**Corresponding Point ID(s):** 18

**Anthropogenic Disturbance/Management Practices:** None notable

**Primary Open Field Cover Type:** Row Cropland (Active)

**Estimated Grass Cover (%):** None

**Estimated Forb Cover (%):** 1-10%

**Estimated Woody Vegetation Cover (%):** None

**Estimated Bare Ground (%):** 90-100%

**Estimated Litter Depth (inches):** None

**Average Vegetation Height (inches):** 0-2

**Dominant Plant Species (Common Names):** Corn

**Invasive Plant Species (Common Names):**

**Representative Photo(s):**





## Field Data Sheet







## Field Data Sheet

### **Notes :**

**Do you need to report observations of another open field?**

Yes



## Field Data Sheet

**Corresponding Point ID(s):** 17

**Anthropogenic Disturbance/Management Practices:** None notable

**Primary Open Field Cover Type:** Field Cropland (including hay, wheat, oats, etc.)

**Estimated Grass Cover (%):** 90-100%

**Estimated Forb Cover (%):** None

**Estimated Woody Vegetation Cover (%):** None

**Estimated Bare Ground (%):** None

**Estimated Litter Depth (inches):** None

**Average Vegetation Height (inches):** 48-54

**Dominant Plant Species (Common Names):** Grass

**Invasive Plant Species (Common Names):**

**Representative Photo(s):**





## Field Data Sheet





## Field Data Sheet

**Notes :**

Tall hay and rain decreased visibility

**Do you need to report observations of another open field?**

Yes



## Field Data Sheet

**Corresponding Point ID(s):** 3

**Anthropogenic Disturbance/Management Practices:** Traffic Noise

**Primary Open Field Cover Type:** Field Cropland (including hay, wheat, oats, etc.)

**Estimated Grass Cover (%):** None

**Estimated Forb Cover (%):** 90-100%

**Estimated Woody Vegetation Cover (%):** None

**Estimated Bare Ground (%):** None

**Estimated Litter Depth (inches):** None

**Average Vegetation Height (inches):** 6-12

**Dominant Plant Species (Common Names):** Alfalfa

**Invasive Plant Species (Common Names):**

**Representative Photo(s):**







## Field Data Sheet





## Field Data Sheet

### **Notes :**

**Do you need to report observations of another open field?**

Yes



## Field Data Sheet

**Corresponding Point ID(s):** 5

**Anthropogenic Disturbance/Management Practices:** Traffic Noise

**Primary Open Field Cover Type:** Row Cropland (Active)

**Estimated Grass Cover (%):** None

**Estimated Forb Cover (%):** 25-50%

**Estimated Woody Vegetation Cover (%):** None

**Estimated Bare Ground (%):** 50-90%

**Estimated Litter Depth (inches):** None

**Average Vegetation Height (inches):** 6-12

**Dominant Plant Species (Common Names):** Corn

**Invasive Plant Species (Common Names):**

**Representative Photo(s):**





## Field Data Sheet





## Field Data Sheet

### **Notes :**

**Do you need to report observations of another open field?**

Yes





## Field Data Sheet

**Corresponding Point ID(s):** 4

**Anthropogenic Disturbance/Management Practices:** Traffic Noise

**Primary Open Field Cover Type:** Row Cropland (Active)

**Estimated Grass Cover (%):** None

**Estimated Forb Cover (%):** 25-50%

**Estimated Woody Vegetation Cover (%):** None

**Estimated Bare Ground (%):** 50-90%

**Estimated Litter Depth (inches):** None

**Average Vegetation Height (inches):** 6-12

**Dominant Plant Species (Common Names):** Corn

**Invasive Plant Species (Common Names):**

**Representative Photo(s):**





## Field Data Sheet





## Field Data Sheet

### **Notes :**

**Do you need to report observations of another open field?**

Yes



## Field Data Sheet

**Corresponding Point ID(s):** 7

**Anthropogenic Disturbance/Management Practices:** Traffic Noise

**Primary Open Field Cover Type:** Field Cropland (including hay, wheat, oats, etc.)

**Estimated Grass Cover (%):** None

**Estimated Forb Cover (%):** 90-100%

**Estimated Woody Vegetation Cover (%):** None

**Estimated Bare Ground (%):** None

**Estimated Litter Depth (inches):** None

**Average Vegetation Height (inches):** 12-18

**Dominant Plant Species (Common Names):** Alfalfa

**Invasive Plant Species (Common Names):**

**Representative Photo(s):**





## Field Data Sheet







## Field Data Sheet

### **Notes :**

**Do you need to report observations of another open field?**

Yes



## Field Data Sheet

**Corresponding Point ID(s):** 6

**Anthropogenic Disturbance/Management Practices:** Traffic Noise

**Primary Open Field Cover Type:** Row Cropland (Active)

**Estimated Grass Cover (%):** None

**Estimated Forb Cover (%):** 25-50%

**Estimated Woody Vegetation Cover (%):** None

**Estimated Bare Ground (%):** 50-90%

**Estimated Litter Depth (inches):** None

**Average Vegetation Height (inches):** 6-12

**Dominant Plant Species (Common Names):** Corn

**Invasive Plant Species (Common Names):**

**Representative Photo(s):**





## Field Data Sheet





## Field Data Sheet

### **Notes :**

**Do you need to report observations of another open field?**

Yes



## Field Data Sheet

**Corresponding Point ID(s):** 1

**Anthropogenic Disturbance/Management Practices:** Traffic Noise

**Primary Open Field Cover Type:** Field Cropland (including hay, wheat, oats, etc.)

**Estimated Grass Cover (%):** None

**Estimated Forb Cover (%):** 90-100%

**Estimated Woody Vegetation Cover (%):** None

**Estimated Bare Ground (%):** None

**Estimated Litter Depth (inches):** None

**Average Vegetation Height (inches):** 6-12

**Dominant Plant Species (Common Names):** Alfalfa

**Invasive Plant Species (Common Names):**

**Representative Photo(s):**







## Field Data Sheet





## Field Data Sheet

### **Notes :**

**Do you need to report observations of another open field?**

Yes



## Field Data Sheet

**Corresponding Point ID(s):** 2

**Anthropogenic Disturbance/Management Practices:** None notable

**Primary Open Field Cover Type:** Field Cropland (including hay, wheat, oats, etc.)

**Estimated Grass Cover (%):** None

**Estimated Forb Cover (%):** 90-100%

**Estimated Woody Vegetation Cover (%):** None

**Estimated Bare Ground (%):** None

**Estimated Litter Depth (inches):** None

**Average Vegetation Height (inches):** 6-12

**Dominant Plant Species (Common Names):** Alfalfa

**Invasive Plant Species (Common Names):**

**Representative Photo(s):**





## Field Data Sheet





## Field Data Sheet

### **Notes :**

**Do you need to report observations of another open field?**

Yes





## Field Data Sheet

**Corresponding Point ID(s):** 9

**Anthropogenic Disturbance/Management Practices:** None notable

**Primary Open Field Cover Type:** Row Cropland (Fallow)

**Estimated Grass Cover (%):** None

**Estimated Forb Cover (%):** 10-25%

**Estimated Woody Vegetation Cover (%):** None

**Estimated Bare Ground (%):** 50-90%

**Estimated Litter Depth (inches):** None

**Average Vegetation Height (inches):** 6-12

**Dominant Plant Species (Common Names):** Corn

**Invasive Plant Species (Common Names):**

**Representative Photo(s):**





## Field Data Sheet





## Field Data Sheet

### **Notes :**

**Do you need to report observations of another open field?**

Yes



## Field Data Sheet

**Corresponding Point ID(s):** 9.1

**Anthropogenic Disturbance/Management Practices:** None notable

**Primary Open Field Cover Type:** Row Cropland (Active)

**Estimated Grass Cover (%):** None

**Estimated Forb Cover (%):** 10-25%

**Estimated Woody Vegetation Cover (%):** None

**Estimated Bare Ground (%):** 50-90%

**Estimated Litter Depth (inches):** None

**Average Vegetation Height (inches):** 6-12

**Dominant Plant Species (Common Names):** Corn

**Invasive Plant Species (Common Names):**

**Representative Photo(s):**





## Field Data Sheet







## Field Data Sheet

### **Notes :**

**Do you need to report observations of another open field?**

Yes



## Field Data Sheet

**Corresponding Point ID(s):** 10

**Anthropogenic Disturbance/Management Practices:** None notable

**Primary Open Field Cover Type:** Row Cropland (Active)

**Estimated Grass Cover (%):** None

**Estimated Forb Cover (%):** 10-25%

**Estimated Woody Vegetation Cover (%):** None

**Estimated Bare Ground (%):** 50-90%

**Estimated Litter Depth (inches):** None

**Average Vegetation Height (inches):** 4-6

**Dominant Plant Species (Common Names):** Corn

**Invasive Plant Species (Common Names):**

**Representative Photo(s):**





## Field Data Sheet





## Field Data Sheet

### **Notes :**

**Do you need to report observations of another open field?**

Yes



## Field Data Sheet

**Corresponding Point ID(s):** 10.1

**Anthropogenic Disturbance/Management Practices:** Traffic Noise

**Primary Open Field Cover Type:** Row Cropland (Active)

**Estimated Grass Cover (%):** None

**Estimated Forb Cover (%):** 10-25%

**Estimated Woody Vegetation Cover (%):** None

**Estimated Bare Ground (%):** 50-90%

**Estimated Litter Depth (inches):** None

**Average Vegetation Height (inches):** 6-12

**Dominant Plant Species (Common Names):** Corn

**Invasive Plant Species (Common Names):**

**Representative Photo(s):**







## Field Data Sheet





## Field Data Sheet

### **Notes :**

**Do you need to report observations of another open field?**

No



## Field Data Sheet

### Weather Conditions at End of Survey

**Temperature (°F):** 58

**Wind Speed (mph):** 0 – 1 (Calm; Smoke rises vertically)

**Wind Direction:** WSW

**Cloud Cover:** Overcast (90-100%)

**Visibility:** Fair (0.62-10 miles; mist or light/moderate precipitation)

**Precipitation:** Rain (Intermittent/Light)

**Weather Notes:**

**Were there any notable weather events/changes during the survey?** Yes

### Bird Observation Summary

**Were any Endangered/Threatened Species observed?**

No

**Were any Species of Special Concern observed?**

Yes

**Were probable, possible, or confirmed breeding behaviors observed for any Listed Species (Endangered/Threatened/Special Concern)?**

Yes

**Were there additional photos documenting birds observed, habitat conditions, and/or other features of interest?**

No

**Additional Photo(s):**

**Were any alternate point count survey locations used due to access or visual constraints?**

No

**Alternate Point Count Survey Locations:**



## Field Data Sheet

**Incidental bird species observed outside of timed point count surveys  
(Alpha Codes or Common Names):**

**Overall Survey Notes:**



## Field Data Sheet

### Breeding Bird Survey

Submitted By: mbaber@edrdpc.com

Submitted Time: June 20, 2023 12:10 PM

### Survey Information

**Project Name:** Agricola Wind

**Survey Date:** June 20, 2023

**Surveyor Name:** Max Baber

**Points Surveyed:** 11-21, 51, 62-68

**Survey Start Time:** 05:35

**Survey End Time:** 10:33

### Weather Conditions at Start of Survey

**Temperature (°F):** 61

**Wind Speed (mph):** 1 – 3 (Light Air; Smoke drifts)

**Wind Direction:** E

**Cloud Cover:** Mostly Cloudy (50% - 90%)

**Visibility:** Good (10+ miles; clear)

**Precipitation:** None (Clear)

**Weather Notes:**





## Field Data Sheet

### Open Field Condition Observations

**Corresponding Point ID(s):** 20

**Anthropogenic Disturbance/Management Practices:** None notable

**Primary Open Field Cover Type:** Field Cropland (including hay, wheat, oats, etc.)

**Estimated Grass Cover (%):** None

**Estimated Forb Cover (%):** 1-10%

**Estimated Woody Vegetation Cover (%):** None

**Estimated Bare Ground (%):** 90-100%

**Estimated Litter Depth (inches):** None

**Average Vegetation Height (inches):** 0-2

**Dominant Plant Species (Common Names):** Unknown sprouts

**Invasive Plant Species (Common Names):**

**Representative Photo(s):**





## Field Data Sheet





## Field Data Sheet

### **Notes :**

**Do you need to report observations of another open field?**

Yes



## Field Data Sheet

**Corresponding Point ID(s):** 21

**Anthropogenic Disturbance/Management Practices:** None notable

**Primary Open Field Cover Type:** Field Cropland (including hay, wheat, oats, etc.)

**Estimated Grass Cover (%):** None

**Estimated Forb Cover (%):** 1-10%

**Estimated Woody Vegetation Cover (%):** None

**Estimated Bare Ground (%):** 90-100%

**Estimated Litter Depth (inches):** None

**Average Vegetation Height (inches):** 0-2

**Dominant Plant Species (Common Names):** Unknown sprouts

**Invasive Plant Species (Common Names):**

**Representative Photo(s):**







## Field Data Sheet







## Field Data Sheet

### **Notes :**

**Do you need to report observations of another open field?**

Yes



## Field Data Sheet

**Corresponding Point ID(s):** 15

**Anthropogenic Disturbance/Management Practices:** None notable

**Primary Open Field Cover Type:** Field Cropland (including hay, wheat, oats, etc.)

**Estimated Grass Cover (%):** 25-50%

**Estimated Forb Cover (%):** 50-90%

**Estimated Woody Vegetation Cover (%):** None

**Estimated Bare Ground (%):** 1-10%

**Estimated Litter Depth (inches):** 0-1"

**Average Vegetation Height (inches):** 6-12

**Dominant Plant Species (Common Names):** Grasses, clover

**Invasive Plant Species (Common Names):**

**Representative Photo(s):**





## Field Data Sheet





## Field Data Sheet

### **Notes :**

**Do you need to report observations of another open field?**

Yes



## Field Data Sheet

**Corresponding Point ID(s):** 14

**Anthropogenic Disturbance/Management Practices:** None notable

**Primary Open Field Cover Type:** Field Cropland (including hay, wheat, oats, etc.)

**Estimated Grass Cover (%):** 25-50%

**Estimated Forb Cover (%):** 50-90%

**Estimated Woody Vegetation Cover (%):** None

**Estimated Bare Ground (%):** 1-10%

**Estimated Litter Depth (inches):** 0-1"

**Average Vegetation Height (inches):** 4-6

**Dominant Plant Species (Common Names):** Grasses, clover

**Invasive Plant Species (Common Names):**

**Representative Photo(s):**







## Field Data Sheet





## Field Data Sheet

### **Notes :**

**Do you need to report observations of another open field?**

Yes



## Field Data Sheet

**Corresponding Point ID(s):** 13

**Anthropogenic Disturbance/Management Practices:** None notable

**Primary Open Field Cover Type:** Field Cropland (including hay, wheat, oats, etc.)

**Estimated Grass Cover (%):** 25-50%

**Estimated Forb Cover (%):** 50-90%

**Estimated Woody Vegetation Cover (%):** None

**Estimated Bare Ground (%):** 1-10%

**Estimated Litter Depth (inches):** 0-1"

**Average Vegetation Height (inches):** 4-6

**Dominant Plant Species (Common Names):** Grasses, clover

**Invasive Plant Species (Common Names):**

**Representative Photo(s):**





## Field Data Sheet





## Field Data Sheet

### **Notes :**

**Do you need to report observations of another open field?**

Yes





## Field Data Sheet

**Corresponding Point ID(s):** 11

**Anthropogenic Disturbance/Management Practices:** None notable

**Primary Open Field Cover Type:** Field Cropland (including hay, wheat, oats, etc.)

**Estimated Grass Cover (%):** 50-90%

**Estimated Forb Cover (%):** 10-25%

**Estimated Woody Vegetation Cover (%):** None

**Estimated Bare Ground (%):** 1-10%

**Estimated Litter Depth (inches):** 1-3"

**Average Vegetation Height (inches):** 6-12

**Dominant Plant Species (Common Names):** Grasses, clover

**Invasive Plant Species (Common Names):**

**Representative Photo(s):**





## Field Data Sheet





## Field Data Sheet

### **Notes :**

**Do you need to report observations of another open field?**

Yes



## Field Data Sheet

**Corresponding Point ID(s):** 12

**Anthropogenic Disturbance/Management Practices:** None notable

**Primary Open Field Cover Type:** Field Cropland (including hay, wheat, oats, etc.)

**Estimated Grass Cover (%):** 50-90%

**Estimated Forb Cover (%):** 10-25%

**Estimated Woody Vegetation Cover (%):** None

**Estimated Bare Ground (%):** 1-10%

**Estimated Litter Depth (inches):** None

**Average Vegetation Height (inches):** 4-6

**Dominant Plant Species (Common Names):** Grasses, clover

**Invasive Plant Species (Common Names):**

**Representative Photo(s):**







## Field Data Sheet







## Field Data Sheet

### **Notes :**

**Do you need to report observations of another open field?**

Yes



## Field Data Sheet

**Corresponding Point ID(s):** 19

**Anthropogenic Disturbance/Management Practices:** None notable

**Primary Open Field Cover Type:** Field Cropland (including hay, wheat, oats, etc.)

**Estimated Grass Cover (%):** None

**Estimated Forb Cover (%):** 1-10%

**Estimated Woody Vegetation Cover (%):** None

**Estimated Bare Ground (%):** 90-100%

**Estimated Litter Depth (inches):** None

**Average Vegetation Height (inches):** 0-2

**Dominant Plant Species (Common Names):** Unknown sprouts

**Invasive Plant Species (Common Names):**

**Representative Photo(s):**





## Field Data Sheet





## Field Data Sheet

### **Notes :**

**Do you need to report observations of another open field?**

Yes



## Field Data Sheet

**Corresponding Point ID(s):** 16

**Anthropogenic Disturbance/Management Practices:** None notable

**Primary Open Field Cover Type:** Field Cropland (including hay, wheat, oats, etc.)

**Estimated Grass Cover (%):** None

**Estimated Forb Cover (%):** 1-10%

**Estimated Woody Vegetation Cover (%):** None

**Estimated Bare Ground (%):** 90-100%

**Estimated Litter Depth (inches):** None

**Average Vegetation Height (inches):** 0-2

**Dominant Plant Species (Common Names):** Unknown sprouts

**Invasive Plant Species (Common Names):**

**Representative Photo(s):**







## Field Data Sheet





## Field Data Sheet

### **Notes :**

**Do you need to report observations of another open field?**

Yes



## Field Data Sheet

**Corresponding Point ID(s):** 18

**Anthropogenic Disturbance/Management Practices:** None notable

**Primary Open Field Cover Type:** Row Cropland (Active)

**Estimated Grass Cover (%):** 1-10%

**Estimated Forb Cover (%):** None

**Estimated Woody Vegetation Cover (%):** None

**Estimated Bare Ground (%):** 90-100%

**Estimated Litter Depth (inches):** None

**Average Vegetation Height (inches):** 0-2

**Dominant Plant Species (Common Names):** Corn

**Invasive Plant Species (Common Names):**

**Representative Photo(s):**







## Field Data Sheet





## Field Data Sheet

### **Notes :**

**Do you need to report observations of another open field?**

Yes





## Field Data Sheet

**Corresponding Point ID(s):** 17

**Anthropogenic Disturbance/Management Practices:** None notable

**Primary Open Field Cover Type:** Field Cropland (including hay, wheat, oats, etc.)

**Estimated Grass Cover (%):** 50-90%

**Estimated Forb Cover (%):** 50-90%

**Estimated Woody Vegetation Cover (%):** None

**Estimated Bare Ground (%):** None

**Estimated Litter Depth (inches):** None

**Average Vegetation Height (inches):** 36-42

**Dominant Plant Species (Common Names):** Grasses, vetch

**Invasive Plant Species (Common Names):**

**Representative Photo(s):**





## Field Data Sheet





## Field Data Sheet

### **Notes :**

**Do you need to report observations of another open field?**

Yes



## Field Data Sheet

**Corresponding Point ID(s):** 63

**Anthropogenic Disturbance/Management Practices:** None notable

**Primary Open Field Cover Type:** Field Cropland (including hay, wheat, oats, etc.)

**Estimated Grass Cover (%):** 25-50%

**Estimated Forb Cover (%):** 50-90%

**Estimated Woody Vegetation Cover (%):** None

**Estimated Bare Ground (%):** None

**Estimated Litter Depth (inches):** 1-3"

**Average Vegetation Height (inches):** 12-18

**Dominant Plant Species (Common Names):** Bedstraw, trefoil, clover, goldenrod, daisy

**Invasive Plant Species (Common Names):**

**Representative Photo(s):**







## Field Data Sheet







## Field Data Sheet

### **Notes :**

**Do you need to report observations of another open field?**

Yes



## Field Data Sheet

**Corresponding Point ID(s):** 62

**Anthropogenic Disturbance/Management Practices:** None notable

**Primary Open Field Cover Type:** Row Cropland (Active)

**Estimated Grass Cover (%):** 10-25%

**Estimated Forb Cover (%):** None

**Estimated Woody Vegetation Cover (%):** None

**Estimated Bare Ground (%):** 90-100%

**Estimated Litter Depth (inches):** None

**Average Vegetation Height (inches):** 12-18

**Dominant Plant Species (Common Names):** Corn

**Invasive Plant Species (Common Names):**

**Representative Photo(s):**





## Field Data Sheet





## Field Data Sheet

### **Notes :**

**Do you need to report observations of another open field?**

Yes



## Field Data Sheet

**Corresponding Point ID(s):** 51

**Anthropogenic Disturbance/Management Practices:** None notable

**Primary Open Field Cover Type:** Field Cropland (including hay, wheat, oats, etc.)

**Estimated Grass Cover (%):** 90-100%

**Estimated Forb Cover (%):** 10-25%

**Estimated Woody Vegetation Cover (%):** None

**Estimated Bare Ground (%):** None

**Estimated Litter Depth (inches):** 0-1"

**Average Vegetation Height (inches):** 6-12

**Dominant Plant Species (Common Names):** Grasses

**Invasive Plant Species (Common Names):**

**Representative Photo(s):**







## Field Data Sheet





## Field Data Sheet

### **Notes :**

**Do you need to report observations of another open field?**

Yes



## Field Data Sheet

**Corresponding Point ID(s):** 66

**Anthropogenic Disturbance/Management Practices:** Traffic Noise

**Primary Open Field Cover Type:** Row Cropland (Active)

**Estimated Grass Cover (%):** None

**Estimated Forb Cover (%):** 1-10%

**Estimated Woody Vegetation Cover (%):** None

**Estimated Bare Ground (%):** 90-100%

**Estimated Litter Depth (inches):** None

**Average Vegetation Height (inches):** 0-2

**Dominant Plant Species (Common Names):** Soybean

**Invasive Plant Species (Common Names):**

**Representative Photo(s):**







## Field Data Sheet





## Field Data Sheet

### **Notes :**

**Do you need to report observations of another open field?**

Yes





## Field Data Sheet

**Corresponding Point ID(s):** 65

**Anthropogenic Disturbance/Management Practices:** Traffic Noise

**Primary Open Field Cover Type:** Row Cropland (Active)

**Estimated Grass Cover (%):** None

**Estimated Forb Cover (%):** 1-10%

**Estimated Woody Vegetation Cover (%):** None

**Estimated Bare Ground (%):** 90-100%

**Estimated Litter Depth (inches):** None

**Average Vegetation Height (inches):** 0-2

**Dominant Plant Species (Common Names):** Soybean

**Invasive Plant Species (Common Names):**

**Representative Photo(s):**





## Field Data Sheet





## Field Data Sheet

### **Notes :**

**Do you need to report observations of another open field?**

Yes



## Field Data Sheet

**Corresponding Point ID(s):** 64

**Anthropogenic Disturbance/Management Practices:** None notable

**Primary Open Field Cover Type:** Field Cropland (including hay, wheat, oats, etc.)

**Estimated Grass Cover (%):** 50-90%

**Estimated Forb Cover (%):** 25-50%

**Estimated Woody Vegetation Cover (%):** None

**Estimated Bare Ground (%):** 1-10%

**Estimated Litter Depth (inches):** None

**Average Vegetation Height (inches):** 24-30

**Dominant Plant Species (Common Names):** Wheat, vetch, clover

**Invasive Plant Species (Common Names):**

**Representative Photo(s):**







## Field Data Sheet







## Field Data Sheet

### **Notes :**

**Do you need to report observations of another open field?**

Yes



## Field Data Sheet

**Corresponding Point ID(s):** 67

**Anthropogenic Disturbance/Management Practices:** Utility Work In Progress

**Primary Open Field Cover Type:** Row Cropland (Active)

**Estimated Grass Cover (%):** 10-25%

**Estimated Forb Cover (%):** 25-50%

**Estimated Woody Vegetation Cover (%):** None

**Estimated Bare Ground (%):** 50-90%

**Estimated Litter Depth (inches):** None

**Average Vegetation Height (inches):** 12-18

**Dominant Plant Species (Common Names):** Corn, lambs quarters

**Invasive Plant Species (Common Names):**

**Representative Photo(s):**





## Field Data Sheet





## Field Data Sheet

### **Notes :**

**Do you need to report observations of another open field?**

Yes



## Field Data Sheet

**Corresponding Point ID(s):** 68

**Anthropogenic Disturbance/Management Practices:** Traffic Noise

**Primary Open Field Cover Type:** Row Cropland (Active)

**Estimated Grass Cover (%):** 1-10%

**Estimated Forb Cover (%):** 10-25%

**Estimated Woody Vegetation Cover (%):** None

**Estimated Bare Ground (%):** 50-90%

**Estimated Litter Depth (inches):** None

**Average Vegetation Height (inches):** 6-12

**Dominant Plant Species (Common Names):** Corn, lambs quarters

**Invasive Plant Species (Common Names):** Dandelion

**Representative Photo(s):**







## Field Data Sheet





## Field Data Sheet

### **Notes :**

**Do you need to report observations of another open field?**

No



## Field Data Sheet

### Weather Conditions at End of Survey

**Temperature (°F):** 72

**Wind Speed (mph):** 1 – 3 (Light Air; Smoke drifts)

**Wind Direction:** ESE

**Cloud Cover:** Mostly Cloudy (50% - 90%)

**Visibility:** Good (10+ miles; clear)

**Precipitation:** None (Clear)

**Weather Notes:**

**Were there any notable weather events/changes during the survey?** No

### Bird Observation Summary

**Were any Endangered/Threatened Species observed?**

No

**Were any Species of Special Concern observed?**

Yes

**Were probable, possible, or confirmed breeding behaviors observed for any Listed Species (Endangered/Threatened/Special Concern)?**

No

**Were there additional photos documenting birds observed, habitat conditions, and/or other features of interest?**

No

**Additional Photo(s):**

**Were any alternate point count survey locations used due to access or visual constraints?**

No

**Alternate Point Count Survey Locations:**



## Field Data Sheet

**Incidental bird species observed outside of timed point count surveys  
(Alpha Codes or Common Names):**

TUVU

**Overall Survey Notes:**



## Field Data Sheet

### Breeding Bird Survey

Submitted By: bsmith@edrdpc.com

Submitted Time: June 22, 2023 10:18 AM

### Survey Information

**Project Name:** Agricola Wind

**Survey Date:** June 22, 2023

**Surveyor Name:** Brooke Smith

**Points Surveyed:** 3, 6, 7, 9-10.1 22-28, 49, 50

**Survey Start Time:** 05:12

**Survey End Time:** 10:12

### Weather Conditions at Start of Survey

**Temperature (°F):** 54

**Wind Speed (mph):** 1 – 3 (Light Air; Smoke drifts)

**Wind Direction:** SE

**Cloud Cover:** Mostly Clear (10-25%)

**Visibility:** Good (10+ miles; clear)

**Precipitation:** None (Clear)

**Weather Notes:**





## Field Data Sheet

### Open Field Condition Observations

**Corresponding Point ID(s):** 22

**Anthropogenic Disturbance/Management Practices:** Traffic Noise

**Primary Open Field Cover Type:** Row Cropland (Active)

**Estimated Grass Cover (%):** None

**Estimated Forb Cover (%):** 10-25%

**Estimated Woody Vegetation Cover (%):** None

**Estimated Bare Ground (%):** 50-90%

**Estimated Litter Depth (inches):** None

**Average Vegetation Height (inches):** 12-18

**Dominant Plant Species (Common Names):** Corn

**Invasive Plant Species (Common Names):**

**Representative Photo(s):**





## Field Data Sheet





## Field Data Sheet

### **Notes :**

**Do you need to report observations of another open field?**

Yes



## Field Data Sheet

**Corresponding Point ID(s):** 23

**Anthropogenic Disturbance/Management Practices:** Traffic Noise

**Primary Open Field Cover Type:** Row Cropland (Active)

**Estimated Grass Cover (%):** None

**Estimated Forb Cover (%):** 10-25%

**Estimated Woody Vegetation Cover (%):** None

**Estimated Bare Ground (%):** 50-90%

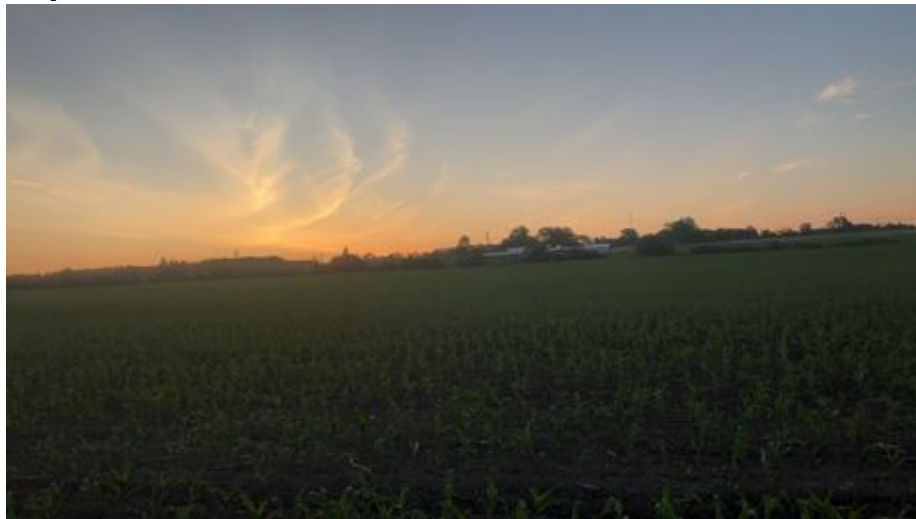
**Estimated Litter Depth (inches):** None

**Average Vegetation Height (inches):** 12-18

**Dominant Plant Species (Common Names):** Corn

**Invasive Plant Species (Common Names):**

**Representative Photo(s):**





## Field Data Sheet







## Field Data Sheet

### **Notes :**

**Do you need to report observations of another open field?**

Yes



## Field Data Sheet

**Corresponding Point ID(s):** 24

**Anthropogenic Disturbance/Management Practices:** Traffic Noise

**Primary Open Field Cover Type:** Row Cropland (Active)

**Estimated Grass Cover (%):** None

**Estimated Forb Cover (%):** 10-25%

**Estimated Woody Vegetation Cover (%):** None

**Estimated Bare Ground (%):** 50-90%

**Estimated Litter Depth (inches):** None

**Average Vegetation Height (inches):** 12-18

**Dominant Plant Species (Common Names):** Corn

**Invasive Plant Species (Common Names):**

**Representative Photo(s):**





## Field Data Sheet





## Field Data Sheet

### **Notes :**

**Do you need to report observations of another open field?**

Yes



## Field Data Sheet

**Corresponding Point ID(s):** 25

**Anthropogenic Disturbance/Management Practices:** Traffic Noise

**Primary Open Field Cover Type:** Field Cropland (including hay, wheat, oats, etc.)

**Estimated Grass Cover (%):** None

**Estimated Forb Cover (%):** 90-100%

**Estimated Woody Vegetation Cover (%):** None

**Estimated Bare Ground (%):** None

**Estimated Litter Depth (inches):** None

**Average Vegetation Height (inches):** 18-24

**Dominant Plant Species (Common Names):** Alfalfa

**Invasive Plant Species (Common Names):**

**Representative Photo(s):**







## Field Data Sheet





## Field Data Sheet

### **Notes :**

**Do you need to report observations of another open field?**

Yes



## Field Data Sheet

**Corresponding Point ID(s):** 26

**Anthropogenic Disturbance/Management Practices:** Traffic Noise

**Primary Open Field Cover Type:** Row Cropland (Active)

**Estimated Grass Cover (%):** None

**Estimated Forb Cover (%):** 10-25%

**Estimated Woody Vegetation Cover (%):** None

**Estimated Bare Ground (%):** 50-90%

**Estimated Litter Depth (inches):** 0-1"

**Average Vegetation Height (inches):** 12-18

**Dominant Plant Species (Common Names):** Corn

**Invasive Plant Species (Common Names):**

**Representative Photo(s):**





## Field Data Sheet





## Field Data Sheet

### **Notes :**

**Do you need to report observations of another open field?**

Yes





## Field Data Sheet

**Corresponding Point ID(s):** 28

**Anthropogenic Disturbance/Management Practices:** Traffic Noise

**Primary Open Field Cover Type:** Row Cropland (Active)

**Estimated Grass Cover (%):** None

**Estimated Forb Cover (%):** 10-25%

**Estimated Woody Vegetation Cover (%):** None

**Estimated Bare Ground (%):** 50-90%

**Estimated Litter Depth (inches):** None

**Average Vegetation Height (inches):** 12-18

**Dominant Plant Species (Common Names):** Corn

**Invasive Plant Species (Common Names):**

**Representative Photo(s):**





## Field Data Sheet





## Field Data Sheet

### **Notes :**

**Do you need to report observations of another open field?**

Yes



## Field Data Sheet

**Corresponding Point ID(s):** 27

**Anthropogenic Disturbance/Management Practices:** Traffic Noise

**Primary Open Field Cover Type:** Row Cropland (Active)

**Estimated Grass Cover (%):** None

**Estimated Forb Cover (%):** 10-25%

**Estimated Woody Vegetation Cover (%):** None

**Estimated Bare Ground (%):** 50-90%

**Estimated Litter Depth (inches):** None

**Average Vegetation Height (inches):** 12-18

**Dominant Plant Species (Common Names):** Corn

**Invasive Plant Species (Common Names):**

**Representative Photo(s):**







## Field Data Sheet







## Field Data Sheet

### **Notes :**

**Do you need to report observations of another open field?**

Yes



## Field Data Sheet

**Corresponding Point ID(s):** 10.1

**Anthropogenic Disturbance/Management Practices:** None notable

**Primary Open Field Cover Type:** Row Cropland (Active)

**Estimated Grass Cover (%):** None

**Estimated Forb Cover (%):** 10-25%

**Estimated Woody Vegetation Cover (%):** None

**Estimated Bare Ground (%):** 50-90%

**Estimated Litter Depth (inches):** None

**Average Vegetation Height (inches):** 12-18

**Dominant Plant Species (Common Names):** Corn

**Invasive Plant Species (Common Names):**

**Representative Photo(s):**





## Field Data Sheet





## Field Data Sheet

### **Notes :**

**Do you need to report observations of another open field?**

Yes



## Field Data Sheet

**Corresponding Point ID(s):** 10

**Anthropogenic Disturbance/Management Practices:** Traffic Noise

**Primary Open Field Cover Type:** Row Cropland (Active)

**Estimated Grass Cover (%):** None

**Estimated Forb Cover (%):** 10-25%

**Estimated Woody Vegetation Cover (%):** None

**Estimated Bare Ground (%):** 50-90%

**Estimated Litter Depth (inches):** None

**Average Vegetation Height (inches):** 12-18

**Dominant Plant Species (Common Names):** Corn

**Invasive Plant Species (Common Names):**

**Representative Photo(s):**







## Field Data Sheet





## Field Data Sheet

### **Notes :**

**Do you need to report observations of another open field?**

Yes



## Field Data Sheet

**Corresponding Point ID(s):** 9

**Anthropogenic Disturbance/Management Practices:** None notable

**Primary Open Field Cover Type:** Row Cropland (Active)

**Estimated Grass Cover (%):** None

**Estimated Forb Cover (%):** 10-25%

**Estimated Woody Vegetation Cover (%):** None

**Estimated Bare Ground (%):** 50-90%

**Estimated Litter Depth (inches):** None

**Average Vegetation Height (inches):** 12-18

**Dominant Plant Species (Common Names):** Corn

**Invasive Plant Species (Common Names):**

**Representative Photo(s):**







## Field Data Sheet





## Field Data Sheet

### **Notes :**

**Do you need to report observations of another open field?**

Yes





## Field Data Sheet

**Corresponding Point ID(s):** 9.1

**Anthropogenic Disturbance/Management Practices:** None notable

**Primary Open Field Cover Type:** Row Cropland (Active)

**Estimated Grass Cover (%):** None

**Estimated Forb Cover (%):** 10-25%

**Estimated Woody Vegetation Cover (%):** None

**Estimated Bare Ground (%):** 25-50%

**Estimated Litter Depth (inches):** None

**Average Vegetation Height (inches):** 12-18

**Dominant Plant Species (Common Names):** Corn

**Invasive Plant Species (Common Names):**

**Representative Photo(s):**





## Field Data Sheet





## Field Data Sheet

### **Notes :**

**Do you need to report observations of another open field?**

Yes



## Field Data Sheet

**Corresponding Point ID(s):** 7

**Anthropogenic Disturbance/Management Practices:** Traffic Noise

**Primary Open Field Cover Type:** Field Cropland (including hay, wheat, oats, etc.)

**Estimated Grass Cover (%):** None

**Estimated Forb Cover (%):** 90-100%

**Estimated Woody Vegetation Cover (%):** None

**Estimated Bare Ground (%):** None

**Estimated Litter Depth (inches):** None

**Average Vegetation Height (inches):** 24-30

**Dominant Plant Species (Common Names):** Alfalfa

**Invasive Plant Species (Common Names):**

**Representative Photo(s):**







## Field Data Sheet







## Field Data Sheet

### **Notes :**

**Do you need to report observations of another open field?**

Yes



## Field Data Sheet

**Corresponding Point ID(s):** 6

**Anthropogenic Disturbance/Management Practices:** Traffic Noise

**Primary Open Field Cover Type:** Row Cropland (Active)

**Estimated Grass Cover (%):** None

**Estimated Forb Cover (%):** 10-25%

**Estimated Woody Vegetation Cover (%):** None

**Estimated Bare Ground (%):** 50-90%

**Estimated Litter Depth (inches):** None

**Average Vegetation Height (inches):** 18-24

**Dominant Plant Species (Common Names):** Corn

**Invasive Plant Species (Common Names):**

**Representative Photo(s):**





## Field Data Sheet





## Field Data Sheet

### **Notes :**

**Do you need to report observations of another open field?**

Yes



## Field Data Sheet

**Corresponding Point ID(s):** 3

**Anthropogenic Disturbance/Management Practices:** Traffic Noise

**Primary Open Field Cover Type:** Field Cropland (including hay, wheat, oats, etc.)

**Estimated Grass Cover (%):** None

**Estimated Forb Cover (%):** 90-100%

**Estimated Woody Vegetation Cover (%):** None

**Estimated Bare Ground (%):** None

**Estimated Litter Depth (inches):** None

**Average Vegetation Height (inches):** 6-12

**Dominant Plant Species (Common Names):** Alfalfa

**Invasive Plant Species (Common Names):**

**Representative Photo(s):**







## Field Data Sheet





## Field Data Sheet

### **Notes :**

**Do you need to report observations of another open field?**

Yes



## Field Data Sheet

**Corresponding Point ID(s):** 49

**Anthropogenic Disturbance/Management Practices:** None notable

**Primary Open Field Cover Type:** Row Cropland (Active)

**Estimated Grass Cover (%):** None

**Estimated Forb Cover (%):** 1-10%

**Estimated Woody Vegetation Cover (%):** None

**Estimated Bare Ground (%):** 90-100%

**Estimated Litter Depth (inches):** None

**Average Vegetation Height (inches):** 4-6

**Dominant Plant Species (Common Names):** Corn

**Invasive Plant Species (Common Names):**

**Representative Photo(s):**





## Field Data Sheet





## Field Data Sheet

### **Notes :**

**Do you need to report observations of another open field?**

Yes





## Field Data Sheet

**Corresponding Point ID(s):** 50

**Anthropogenic Disturbance/Management Practices:** None notable

**Primary Open Field Cover Type:** Row Cropland (Active)

**Estimated Grass Cover (%):** None

**Estimated Forb Cover (%):** 1-10%

**Estimated Woody Vegetation Cover (%):** None

**Estimated Bare Ground (%):** 90-100%

**Estimated Litter Depth (inches):** None

**Average Vegetation Height (inches):** 4-6

**Dominant Plant Species (Common Names):** Corn

**Invasive Plant Species (Common Names):**

**Representative Photo(s):**





## Field Data Sheet





## Field Data Sheet

### **Notes :**

**Do you need to report observations of another open field?**

No



## Field Data Sheet

### Weather Conditions at End of Survey

**Temperature (°F):** 66

**Wind Speed (mph):** 4 – 7 (Light Breeze; Leaves rustle)

**Wind Direction:** ESE

**Cloud Cover:** Overcast (90-100%)

**Visibility:** Good (10+ miles; clear)

**Precipitation:** None (Clear)

**Weather Notes:**

**Were there any notable weather events/changes during the survey?** No

### Bird Observation Summary

**Were any Endangered/Threatened Species observed?**

No

**Were any Species of Special Concern observed?**

No

**Were probable, possible, or confirmed breeding behaviors observed for any Listed Species (Endangered/Threatened/Special Concern)?**

No

**Were there additional photos documenting birds observed, habitat conditions, and/or other features of interest?**

No

**Additional Photo(s):**

**Were any alternate point count survey locations used due to access or visual constraints?**

No

**Alternate Point Count Survey Locations:**



## Field Data Sheet

**Incidental bird species observed outside of timed point count surveys  
(Alpha Codes or Common Names):**

**Overall Survey Notes:**





## Field Data Sheet

### Breeding Bird Survey

Submitted By: mbaber@edrdpc.com

Submitted Time: June 22, 2023 12:10 PM

### Survey Information

**Project Name:** Agricola Wind

**Survey Date:** June 22, 2023

**Surveyor Name:** Max Baber

**Points Surveyed:** 36-39, 52-61

**Survey Start Time:** 05:33

**Survey End Time:** 10:32

### Weather Conditions at Start of Survey

**Temperature (°F):** 54

**Wind Speed (mph):** 1 – 3 (Light Air; Smoke drifts)

**Wind Direction:** ESE

**Cloud Cover:** Partly Cloudy (25% - 50%)

**Visibility:** Good (10+ miles; clear)

**Precipitation:** None (Clear)

**Weather Notes:**



## Field Data Sheet

### Open Field Condition Observations

**Corresponding Point ID(s):** 60

**Anthropogenic Disturbance/Management Practices:** None notable

**Primary Open Field Cover Type:** Field Cropland (including hay, wheat, oats, etc.)

**Estimated Grass Cover (%):** 90-100%

**Estimated Forb Cover (%):** None

**Estimated Woody Vegetation Cover (%):** None

**Estimated Bare Ground (%):** None

**Estimated Litter Depth (inches):** None

**Average Vegetation Height (inches):** 36-42

**Dominant Plant Species (Common Names):** Wheat

**Invasive Plant Species (Common Names):**

**Representative Photo(s):**





## Field Data Sheet





## Field Data Sheet

### **Notes :**

**Do you need to report observations of another open field?**

Yes



## Field Data Sheet

**Corresponding Point ID(s):** 61

**Anthropogenic Disturbance/Management Practices:** Traffic Noise

**Primary Open Field Cover Type:** Field Cropland (including hay, wheat, oats, etc.)

**Estimated Grass Cover (%):** 90-100%

**Estimated Forb Cover (%):** None

**Estimated Woody Vegetation Cover (%):** None

**Estimated Bare Ground (%):** None

**Estimated Litter Depth (inches):** None

**Average Vegetation Height (inches):** 24-30

**Dominant Plant Species (Common Names):** Wheat

**Invasive Plant Species (Common Names):**

**Representative Photo(s):**







## Field Data Sheet





## Field Data Sheet

### **Notes :**

**Do you need to report observations of another open field?**

Yes



## Field Data Sheet

**Corresponding Point ID(s):** 59

**Anthropogenic Disturbance/Management Practices:** Traffic Noise

**Primary Open Field Cover Type:** Field Cropland (including hay, wheat, oats, etc.)

**Estimated Grass Cover (%):** 50-90%

**Estimated Forb Cover (%):** 25-50%

**Estimated Woody Vegetation Cover (%):** None

**Estimated Bare Ground (%):** None

**Estimated Litter Depth (inches):** 0-1"

**Average Vegetation Height (inches):** 12-18

**Dominant Plant Species (Common Names):** Grasses, wheat

**Invasive Plant Species (Common Names):**

**Representative Photo(s):**







## Field Data Sheet





## Field Data Sheet

### **Notes :**

**Do you need to report observations of another open field?**

Yes





## Field Data Sheet

**Corresponding Point ID(s):** 58.2

**Anthropogenic Disturbance/Management Practices:** Traffic Noise

**Primary Open Field Cover Type:** Field Cropland (including hay, wheat, oats, etc.)

**Estimated Grass Cover (%):** 90-100%

**Estimated Forb Cover (%):** None

**Estimated Woody Vegetation Cover (%):** None

**Estimated Bare Ground (%):** None

**Estimated Litter Depth (inches):** None

**Average Vegetation Height (inches):** 30-36

**Dominant Plant Species (Common Names):** Wheat

**Invasive Plant Species (Common Names):**

**Representative Photo(s):**





## Field Data Sheet





## Field Data Sheet

### **Notes :**

**Do you need to report observations of another open field?**

Yes



## Field Data Sheet

**Corresponding Point ID(s):** 58.1

**Anthropogenic Disturbance/Management Practices:** Traffic Noise

**Primary Open Field Cover Type:** Field Cropland (including hay, wheat, oats, etc.)

**Estimated Grass Cover (%):** 90-100%

**Estimated Forb Cover (%):** 10-25%

**Estimated Woody Vegetation Cover (%):** None

**Estimated Bare Ground (%):** None

**Estimated Litter Depth (inches):** 0-1"

**Average Vegetation Height (inches):** 12-18

**Dominant Plant Species (Common Names):** Wheat, grasses, corn

**Invasive Plant Species (Common Names):**

**Representative Photo(s):**







## Field Data Sheet







## Field Data Sheet

### **Notes :**

**Do you need to report observations of another open field?**

Yes



## Field Data Sheet

**Corresponding Point ID(s):** 53

**Anthropogenic Disturbance/Management Practices:** None notable

**Primary Open Field Cover Type:** Row Cropland (Active)

**Estimated Grass Cover (%):** 1-10%

**Estimated Forb Cover (%):** None

**Estimated Woody Vegetation Cover (%):** None

**Estimated Bare Ground (%):** 90-100%

**Estimated Litter Depth (inches):** None

**Average Vegetation Height (inches):** 4-6

**Dominant Plant Species (Common Names):** Corn

**Invasive Plant Species (Common Names):**

**Representative Photo(s):**

