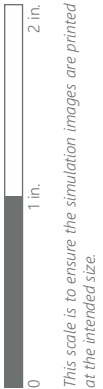






EXISTING VIEW (7 OF 10)



VIEWPOINT 105
Stewarts Corners Road

Agricola Wind Project
Visual Impact Assessment, Appendix 8-A, Attachment D



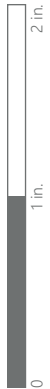
Note: Printed at actual size, the existing view image is 15 inches wide by 10 inches high. At this size and focal length, the existing view image should be viewed from a distance 21 inches from the eye of the viewer.



Note: Printed at actual size, the resulting wireframe rendering is 15 inches wide by 10 inches high. At this size and focal length, the rendering should be viewed from a distance 21 inches from the eye of the viewer.



EXISTING VIEW (8 OF 10)



This scale is to ensure the simulation images are printed at the intended size.

VIEWPOINT 105
Stewarts Corners Road

Agricola Wind Project
Visual Impact Assessment, Appendix 8-A, Attachment D



Note: Printed at actual size, the existing view image is 15 inches wide by 10 inches high. At this size and focal length, the existing view image should be viewed from a distance 21 inches from the eye of the viewer.



WIREFRAME RENDERING (8 OF 10)

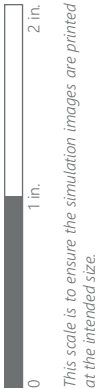
Note: Printed at actual size, the resulting wireframe rendering is 15 inches wide by 10 inches high. At this size and focal length, the rendering should be viewed from a distance 21 inches from the eye of the viewer.



EXISTING VIEW (9 OF 10)

WIREFRAME RENDERING (9 OF 10)





VIEWPOINT 105
Stewarts Corners Road

Note: Printed at actual size, the existing view image is 15 inches wide by 10 inches high. At this size and focal length, the existing view image should be viewed from a distance 21 inches from the eye of the viewer.

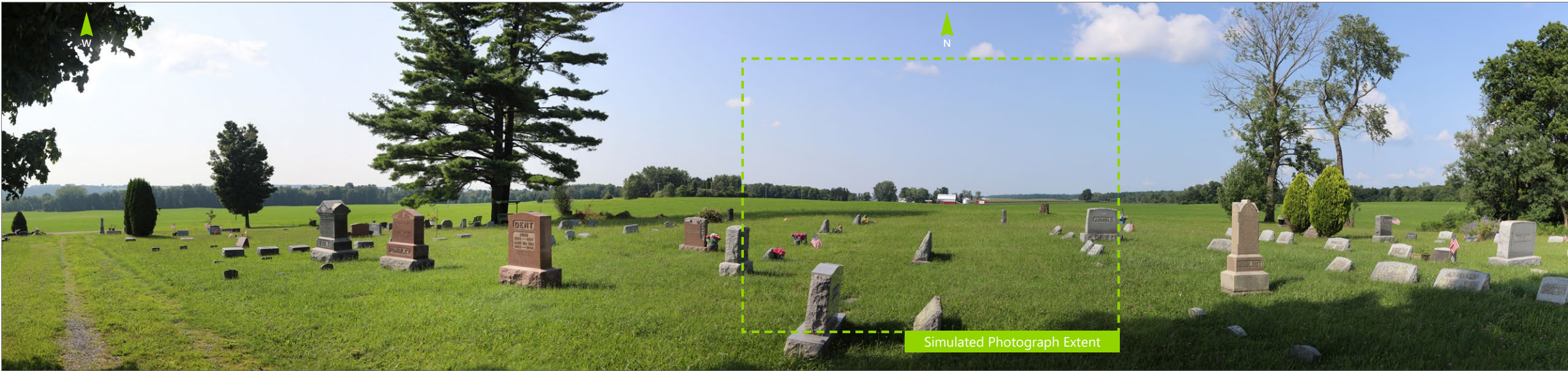


Note: Printed at actual size, the resulting wireframe rendering is 15 inches wide by 10 inches high. At this size and focal length, the rendering should be viewed from a distance 21 inches from the eye of the viewer.

EXISTING VIEW - PANORAMA





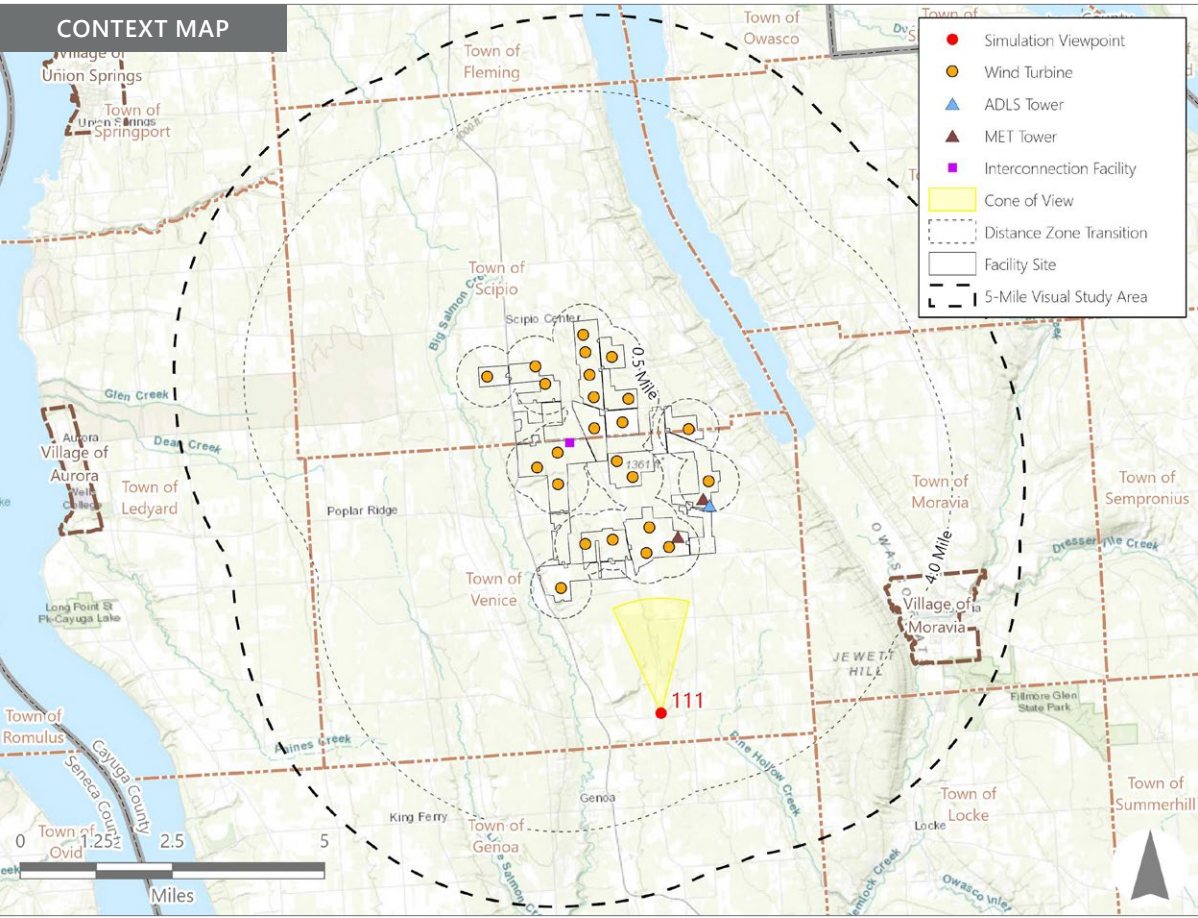
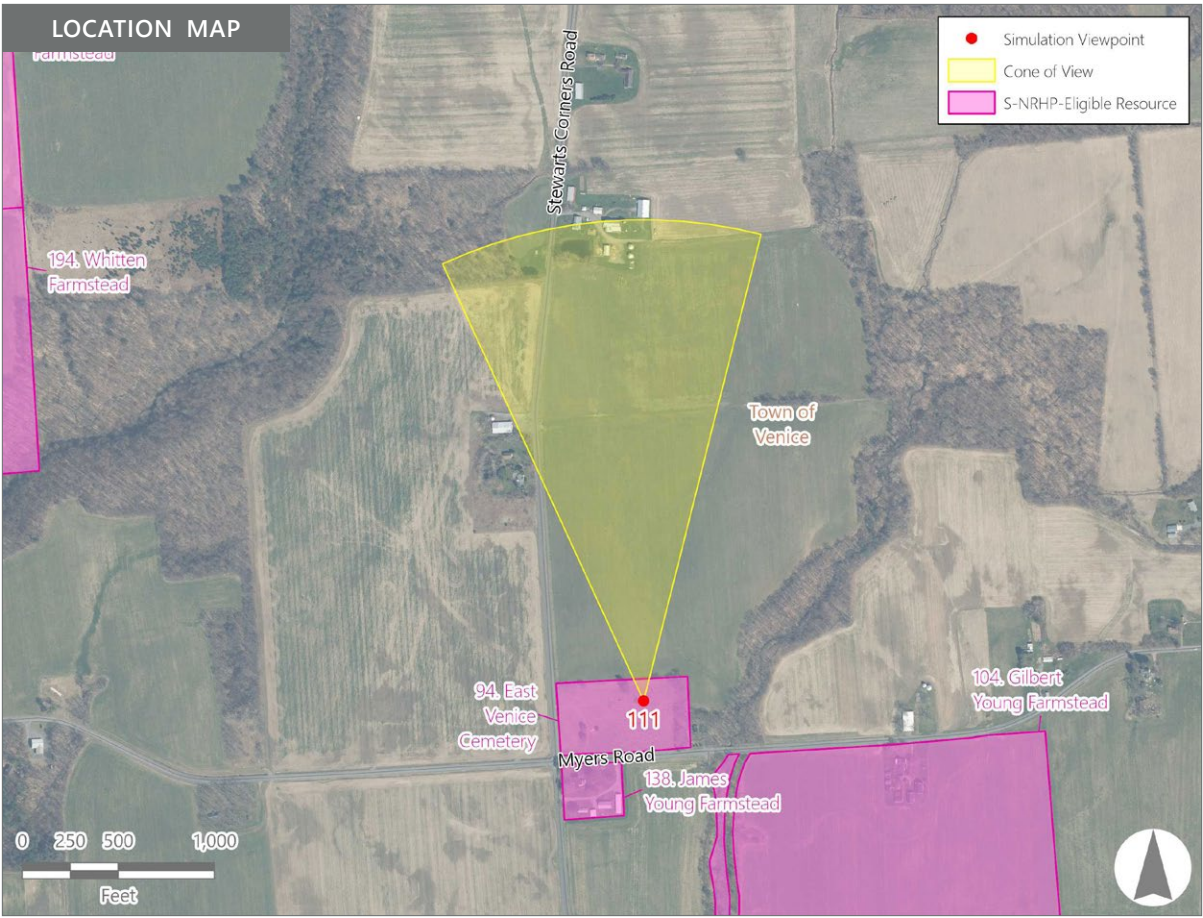


Note: The image above is a panorama composition panning clockwise from west (left) to northeast (right).

VIEWPOINT 111
East Venice Cemetery

LOCATION INFORMATION

Municipality:	Town of Venice
County:	Cayuga
Latitude:	42.69039° N
Longitude:	76.51172° W
Wind Turbine Distance*:	2.6 miles
Distance Zone Represented:	Middle Ground
Landscape Similarity Zone:	Agricultural/Rural Residential
Viewer/User Group(s):	Local Residents
Visually Sensitive Resource(s):	
VSR ID # 94	East Venice Cemetery



PHOTOGRAPH INFORMATION

Date:	August 14, 2024
Time:	4:11 PM
Camera:	Canon EOS 5D Mark IV
Camera Resolution:	30.4 Megapixels
Lens Focal Length (35 mm sensor equivalent):	50 mm
Camera Elevation:	1,163 feet
Field of View:	39 degrees
Direction of View:	North
Printed Size:	10 inches x 15 inches
Viewing Distance**:	21 inches

NOTES

*Distance as measured from the viewpoint to the closest wind turbine within the simulated photograph's field of view.

**The simulation is at the correct perspective when printed on an 11 inch by 17 inch sheet at full scale, and viewed approximately 21 inches from the eye of the viewer.

Agricola Wind Project

Towns of Venice and Scipio, Cayuga County, New York

Visual Impact Assessment
Appendix 8-A

VIEWPOINT 111

East Venice Cemetery



Existing View

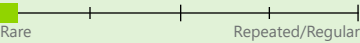
Viewpoint 111 is located in the East Venice Cemetery in the Town of Venice, approximately 2.6 miles from the nearest proposed wind turbine that would be visible in the selected photograph's field of view. It is in the Agricultural/Rural Residential LSZ, and typical viewers are local residents or visitors paying respects to departed loved ones. Outward views from the cemetery are partially screened by planted trees, but are primarily open and include adjacent agricultural fields, woodlots, and farms. In the selected photo, the existing view to the north includes headstones and the bright green maintained lawn of the cemetery in the foreground. The lawn transitions seamlessly into an adjacent green agricultural field that extends to the middle ground where a centrally located farm complex serves as a focal point in the view. Other middle ground features include trees associated with the farm complex and the edge of a woodlot and an overhead utility line to the left of the farm. These features block more distant views in that direction. To the right of the farm complex, additional level agricultural fields extend into the background where they meet the edge of a more distant woodlot, the top of which creates the visible horizon. The sky overhead is expansive and hazy light blue in color. The view has a peaceful, bucolic character and moderate scenic quality.

Viewpoint Sensitivity¹:

Scenic Quality:



View Frequency:



View Duration:



¹Viewpoint Sensitivity information is gathered from rating panel results. Scenic Quality and Viewer Exposure indicated in this table reflects all ratings by the rating panel.



Proposed View

With the proposed Facility in place, portions of several wind turbines rise above the trees in the middle ground in the left and center portions of the view and the background woodlot on the right. The turbines' white color blends well with the light blue-gray sky, and all of the turbines except one are at least partially screened by the vegetation in front of them. The middle ground trees not only partially block views of the turbines, but also reduce their perceived scale contrast. Scale contrast with the background vegetation is notable for the one fully unscreened turbine and a steel lattice MET tower to the right of center in this view. However, due to their limited number, lack of color contrast, and partial screening, the Facility does not dominate the view or change the agricultural character of the surrounding landscape. The turbines also far enough away that they do not significantly alter the peaceful character or scenic quality of the cemetery.

Visual Contrast Rating Results Summary

Landscape Component	Score	Rating
Landform	1.3	Minimal/Moderate
Vegetation	1.0	Minimal
Land Use	2.7	Moderate/Appreciable
Water	N/A	N/A
Sky	2.0	Moderate
Viewer Activity	1.8	Moderate
Overall Average	1.8	Moderate

Agricola Wind Project

Towns of Venice and Scipio, Cayuga County, New York

Visual Impact Assessment
Appendix 8-A

EXISTING VIEW



Note: Printed at actual size, the existing view image is 15 inches wide by 10 inches high. At this size and focal length, the existing view image should be viewed from a distance 21 inches from the eye of the viewer.



VIEWPOINT 111
East Venice Cemetery

PHOTOSIMULATION



Note: Printed at actual size, the resulting simulation image is 15 inches wide by 10 inches high. At this size and focal length, the simulation should be viewed from a distance 21 inches from the eye of the viewer.



VIEWPOINT 111
East Venice Cemetery



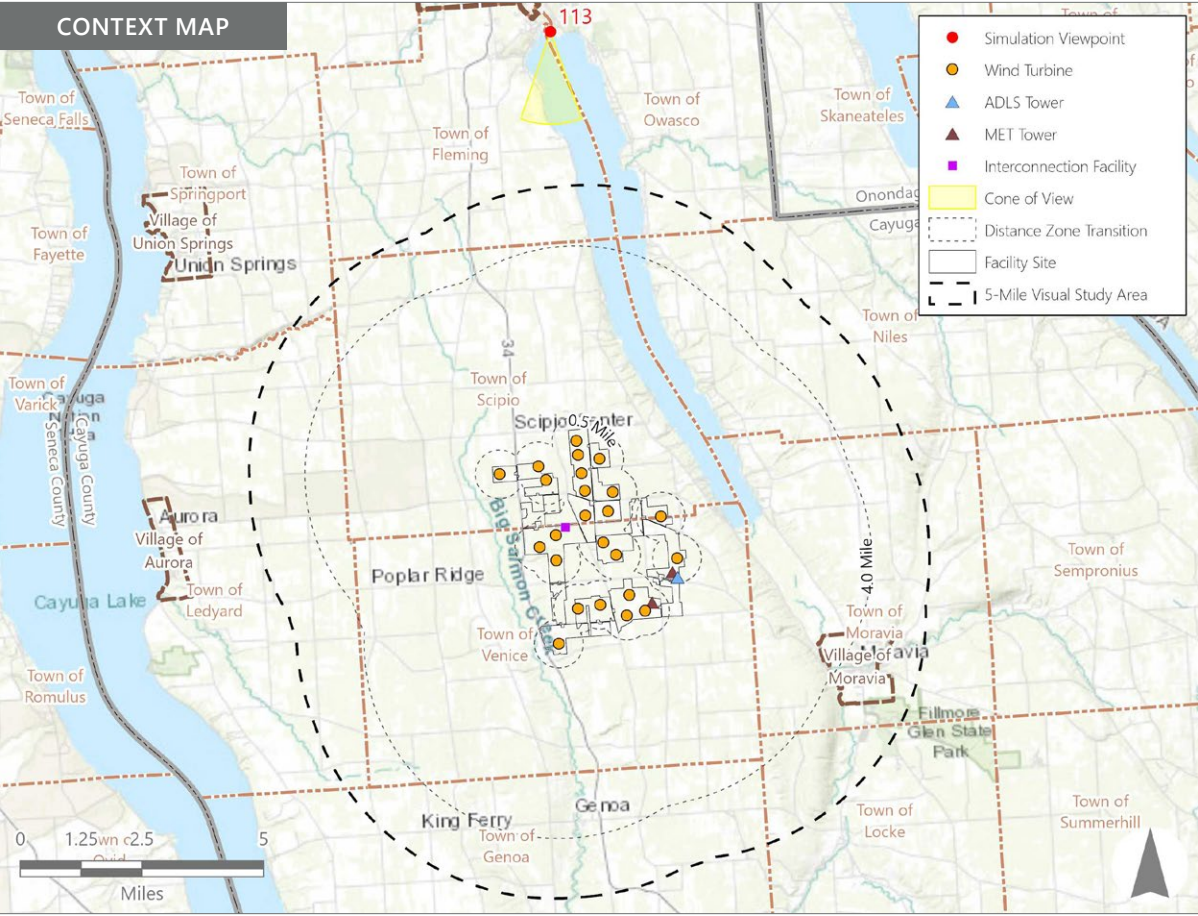
Note: The image above is a panorama composition panning clockwise from southeast (left) to southwest (right).

VIEWPOINT 113
Island Park

LOCATION INFORMATION

Municipality:	Town of Owasco
County:	Cayuga
Latitude:	42.90270° N
Longitude:	76.54040° W
Wind Turbine Distance*:	8.4 miles
Distance Zone Represented:	Background
Landscape Similarity Zone:	Owasco Lake
Viewer/User Group(s):	Local Residents, Tourists/ Recreational Users

Visually Sensitive Resource(s):	
VSR ID # 50	Owasco Lake



PHOTOGRAPH INFORMATION

Date:	March 12, 2024
Time:	8:13 AM
Camera:	Canon EOS 5D Mark IV
Camera Resolution:	30.4 Megapixels
Lens Focal Length (35 mm sensor equivalent):	50 mm
Camera Elevation:	715 feet
Field of View:	39 degrees
Direction of View:	South
Printed Size:	10 inches x 15 inches
Viewing Distance**:	21 inches

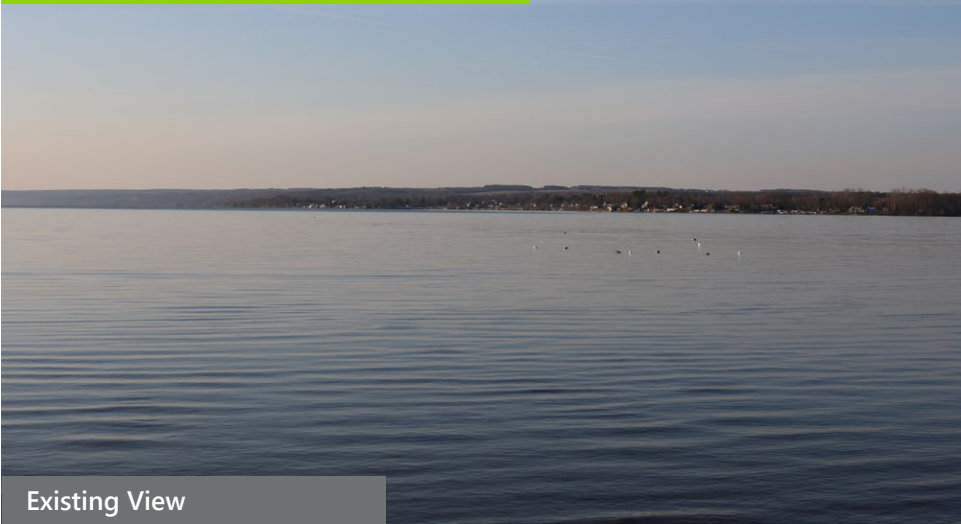
NOTES

*Distance as measured from the viewpoint to the closest wind turbine within the simulated photograph's field of view.

**The simulation is at the correct perspective when printed on an 11 inch by 17 inch sheet at full scale, and viewed approximately 21 inches from the eye of the viewer.

VIEWPOINT 113

Melrose Park

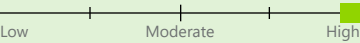


Existing View

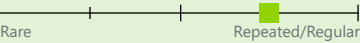
Viewpoint 113 is located at Melrose Park on the shores of Owasco Lake in the Town of Owasco, approximately 8.4 miles from the nearest proposed wind turbine that would be visible in the selected photograph's field of view. It is located in the Owasco Lake LSZ and typical viewers are local residents and tourists/recreational users of the park. Views in this general area focus on the adjacent lake and its shorelines and include long-distance views down the full length of the 10.5-mile long lake. In the selected photo, the existing view to the south includes the placid waters of Owasco Lake, extending from the immediate foreground to the background. The surface of the lake is uninterrupted, except for the presence of a small flock of gulls in the foreground. The lake extends to the far shoreline, which is characterized by a mix of forest and built structures. The shoreline becomes progressively more wooded as it extends to the left away from the viewer. The steep wooded slope of the shoreline terminates at the skyline where the dark forest vegetation meets the white/light blue sky. The band of shoreline vegetation between the lake and the sky creates a strong horizontal line in the landscape. This line is complemented by the horizontal orientation of the ripples on the water and the thin clouds overhead. The view has a peaceful waterfront character, and has fairly high scenic quality.

Viewpoint Sensitivity¹:

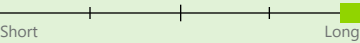
Scenic Quality:



View Frequency:



View Duration:



¹Viewpoint Sensitivity information is gathered from rating panel results. Scenic Quality and Viewer Exposure indicated in this table reflects all ratings by the rating panel.



Proposed View

With the proposed Facility in place, a cluster and some more widely spaced wind turbines are visible above the distant ridgeline in the left half of the view. Due to their distance from the viewer, the turbines appear delicate, and the more distant turbines begin to get lost in the haze. Although the clustered concentration of turbines and their movement will add an element of visual clutter to the view, their distance and the small portion of the panoramic view available at Melrose Park that they occupy limits the turbines' adverse impact. Although they represent a new focal point in the view, the expansive surface of Owasco Lake, shoreline structures, and the forested ridge on the opposite side of the lake remain the dominant features of the view. Due to their distance and limited geographic expanse, the turbines will have minimal impact on landscape character, scenic quality, or viewer enjoyment at this viewpoint.

Visual Contrast Rating Results Summary

Landscape Component	Score	Rating
Landform	1.0	Minimal
Vegetation	0.7	Insignificant/Minimal
Land Use	2.2	Moderate
Water	1.0	Minimal
Sky	1.5	Minimal/Moderate
Viewer Activity	1.5	Minimal/Moderate
Overall Average	1.3	Minimal/Moderate

Agricola Wind Project

Towns of Venice and Scipio, Cayuga County, New York

Visual Impact Assessment
Appendix 8-A

EXISTING VIEW



Note: Printed at actual size, the existing view image is 15 inches wide by 10 inches high. At this size and focal length, the existing view image should be viewed from a distance 21 inches from the eye of the viewer.

PHOTOSIMULATION



Note: Printed at actual size, the resulting simulation image is 15 inches wide by 10 inches high. At this size and focal length, the simulation should be viewed from a distance 21 inches from the eye of the viewer.



VIEWPOINT 113
Melrose Park

Agricola Wind Project
Visual Impact Assessment, Appendix 8-A, Attachment D

