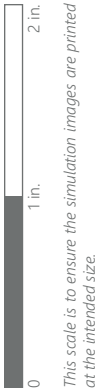


EXISTING VIEW (3 OF 4)



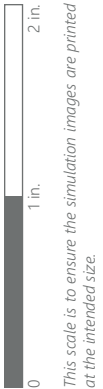
*Note: Printed at actual size, the existing view image is 15 inches wide by 10 inches high. At this size and focal length, the existing view image should be viewed from a distance 21 inches from the eye of the viewer.*



**VIEWPOINT 36**  
Indian Field Road



*Note: Printed at actual size, the resulting simulation image is 15 inches wide by 10 inches high. At this size and focal length, the simulation should be viewed from a distance 21 inches from the eye of the viewer.*

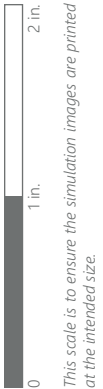


**VIEWPOINT 36**  
Indian Field Road

EXISTING VIEW (4 OF 4)



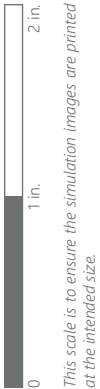
*Note: Printed at actual size, the existing view image is 15 inches wide by 10 inches high. At this size and focal length, the existing view image should be viewed from a distance 21 inches from the eye of the viewer.*



**VIEWPOINT 36**  
Indian Field Road



*Note: Printed at actual size, the resulting simulation image is 15 inches wide by 10 inches high. At this size and focal length, the simulation should be viewed from a distance 21 inches from the eye of the viewer.*



**VIEWPOINT 36**  
Indian Field Road







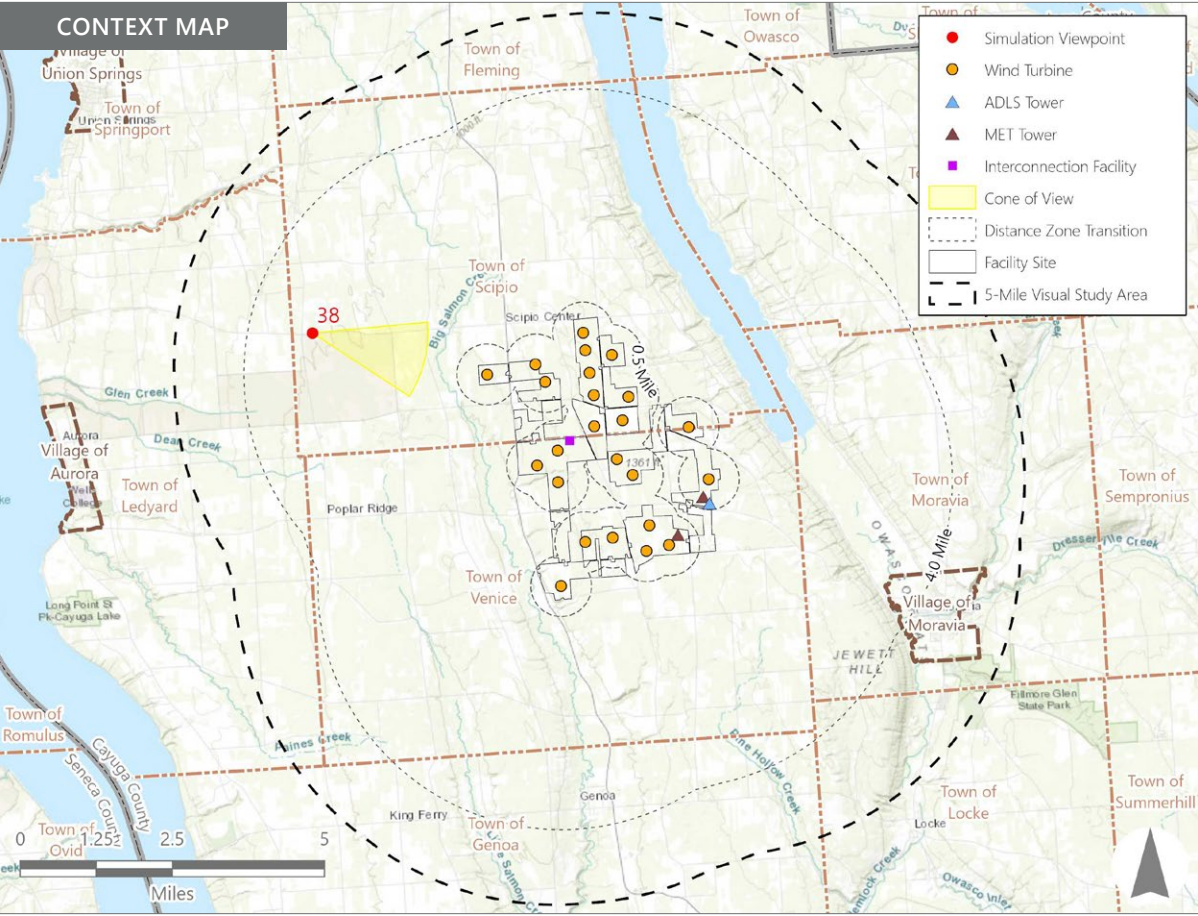
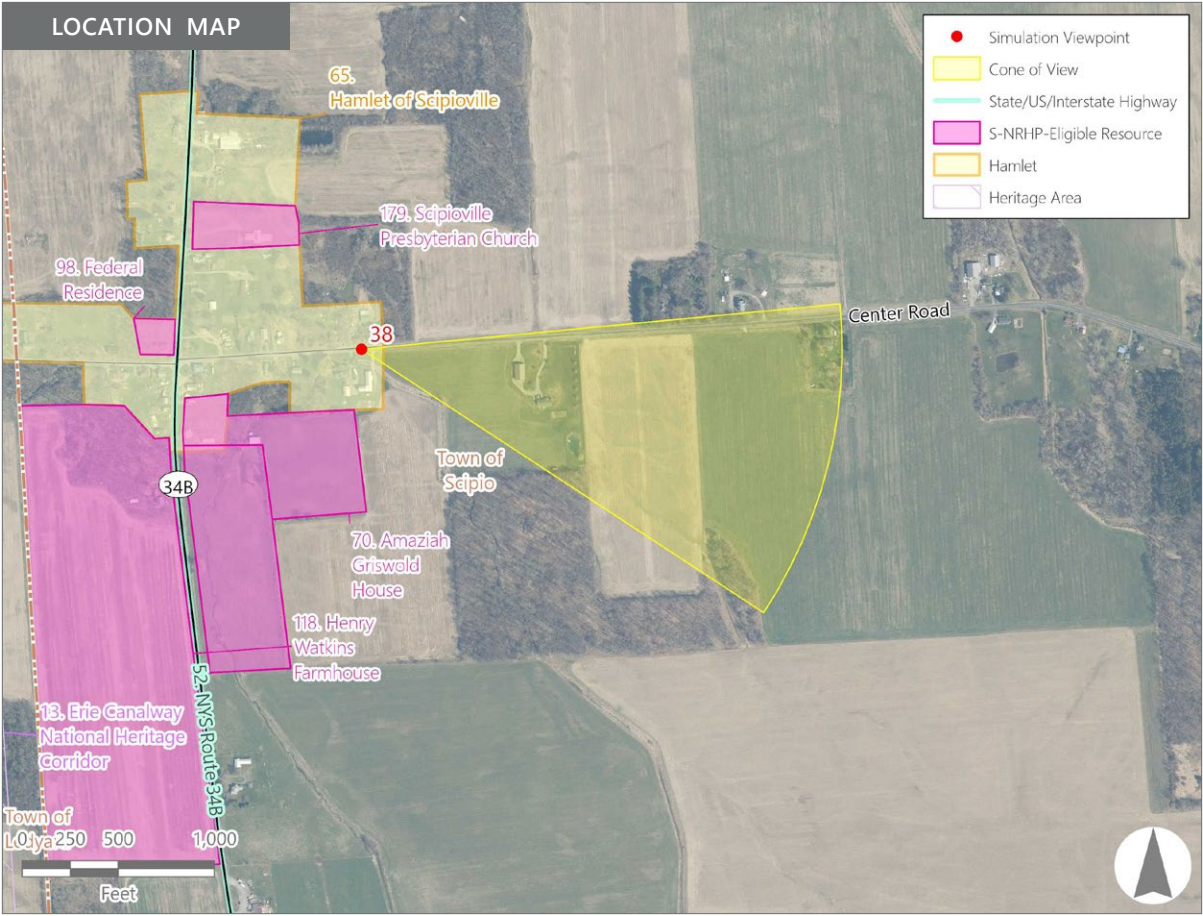
Note: The image above is a panorama composition panning clockwise from northeast (left) to south (right).

Simulated Photograph Extent

VIEWPOINT 38  
Center Road

LOCATION INFORMATION

Municipality:	Town of Scipio
County:	Cayuga
Latitude:	42.78230° N
Longitude:	76.62129° W
Wind Turbine Distance*:	3.0 miles
Distance Zone Represented:	Middle Ground
Landscape Similarity Zone:	Hamlet
Viewer/User Group(s):	Local Residents
Visually Sensitive Resource(s):	
VSR ID # 65	Hamlet of Scipioville



PHOTOGRAPH INFORMATION

Date:	March 12, 2024
Time:	12:30 PM
Camera:	Canon EOS 5D Mark IV
Camera Resolution:	30.4 Megapixels
Lens Focal Length (35 mm sensor equivalent):	50 mm
Camera Elevation:	1,241 feet
Field of View:	39 degrees
Direction of View:	East
Printed Size:	10 inches x 15 inches
Viewing Distance**:	21 inches

NOTES

\*Distance as measured from the viewpoint to the closest wind turbine within the simulated photograph's field of view.

\*\*The simulation is at the correct perspective when printed on an 11 inch by 17 inch sheet at full scale, and viewed approximately 21 inches from the eye of the viewer.

Agricola Wind Project

Towns of Venice and Scipio, Cayuga County, New York

Visual Impact Assessment  
Appendix 8-A

VIEWPOINT 38

Center Road



Existing View

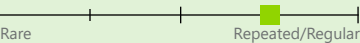
Viewpoint 38 is located on Center Road in the Town of Scipio, approximately 3 miles from the nearest proposed wind turbine that would be visible in the selected photograph's field of view. This viewpoint occurs in the Hamlet LSZ (Scipioville) and typical viewers are local residents. Views in this general area feature a rural setting that includes a mix of fields, woodlots, farms, and homes. In the selected photo, the existing view to the east includes a mowed lawn bisected by a gravel driveway and overhead service line in the foreground. A residential yard in the middle ground includes a pole barn, a home, and landscape plantings. Beyond the yard, the land drops before rising as an open agricultural field that extends to a background tree line that defines the visible horizon. Center Road is a prominent feature on the left side of the view, proceeding directly away from the viewer. The road extends from the immediate foreground to the background, where it tops a small hill and drops out of sight. The foreground driveway and middle ground structures are the focal points in this view and give it a rural residential character. Scenic quality is moderate due to a lack of topographic and vegetative variability or interesting focal points.

Viewpoint Sensitivity<sup>1</sup>:

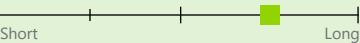
Scenic Quality:



View Frequency:



View Duration:



<sup>1</sup>Viewpoint Sensitivity information is gathered from rating panel results. Scenic Quality and Viewer Exposure indicated in this table reflects all ratings by the rating panel.



Proposed View

With the proposed Facility in place, numerous wind turbines extend into the sky above the background tree line. Due to backlighting, the turbines are primarily in shadow, which increases their contrast with the light blue sky. Although they are clearly taller than the background trees, their perceived scale contrast is minimized due to their distance from the viewer. However, the abundance of turbines, their novel form, and movement will compete with the middle ground buildings for viewer attention. As new focal points in the landscape, the turbines present moderate contrast with the residential land use that characterizes the existing view. However, their occurrence as strictly background features provides visual separation of the wind farm from the residence and open fields in the foreground and middle ground of the view. The turbines add a degree of visual clutter to the view, but do not have a significant adverse effect on scenic quality.

Visual Contrast Rating Results Summary

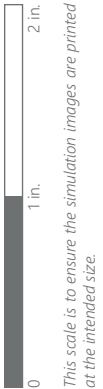
Landscape Component	Score	Rating
Landform	1.2	Minimal
Vegetation	1.2	Minimal
Land Use	2.0	Moderate
Water	N/A	N/A
Sky	2.2	Moderate
Viewer Activity	1.8	Moderate
Overall Average	1.7	Minimal/Moderate

Agricola Wind Project

Towns of Venice and Scipio, Cayuga County, New York

Visual Impact Assessment  
Appendix 8-A

EXISTING VIEW



VIEWPOINT 38  
Center Road

*Note: Printed at actual size, the existing view image is 15 inches wide by 10 inches high. At this size and focal length, the existing view image should be viewed from a distance 21 inches from the eye of the viewer.*

PHOTOSIMULATION



*Note: Printed at actual size, the resulting simulation image is 15 inches wide by 10 inches high. At this size and focal length, the simulation should be viewed from a distance 21 inches from the eye of the viewer.*



Note: The image above is a panorama composition panning clockwise from northeast (left) to southeast (right).

VIEWPOINT 40

State Route 34B and Sherwood Road

LOCATION INFORMATION

Municipality:	Town of Scipio
County:	Cayuga
Latitude:	42.76101° N
Longitude:	76.62131° W
Wind Turbine Distance*:	2.9 miles
Distance Zone Represented:	Middle Ground
Landscape Similarity Zone:	Agricultural/Rural Residential
Viewer/User Group(s):	Local Residents, Through-Travelers
Visually Sensitive Resource(s):	
VSR ID # 8	Howland Cobblestone Store
VSR ID # 17	Sherwood Equal Rights Historic District
VSR ID # 30	Scenic View from State Route 34B
VSR ID # 52	NYS Route 34B

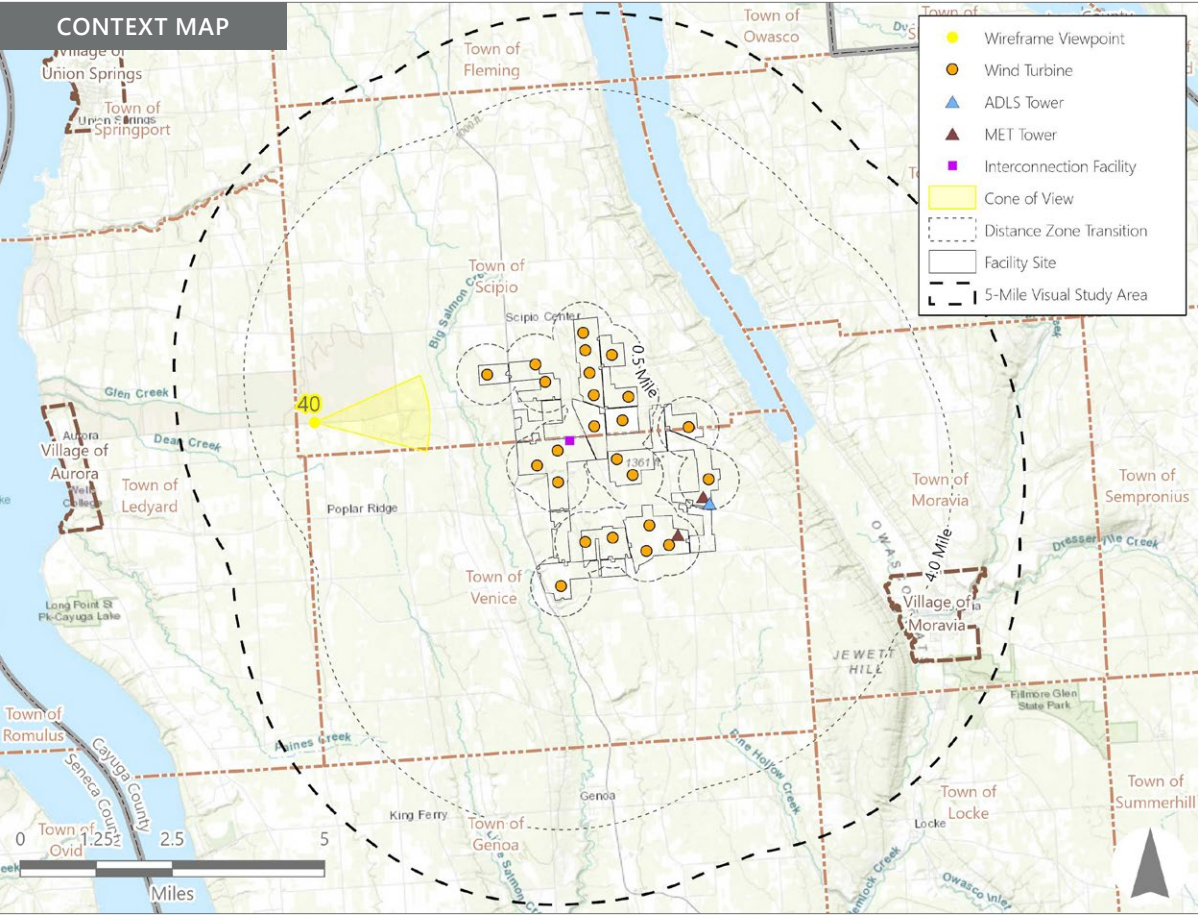
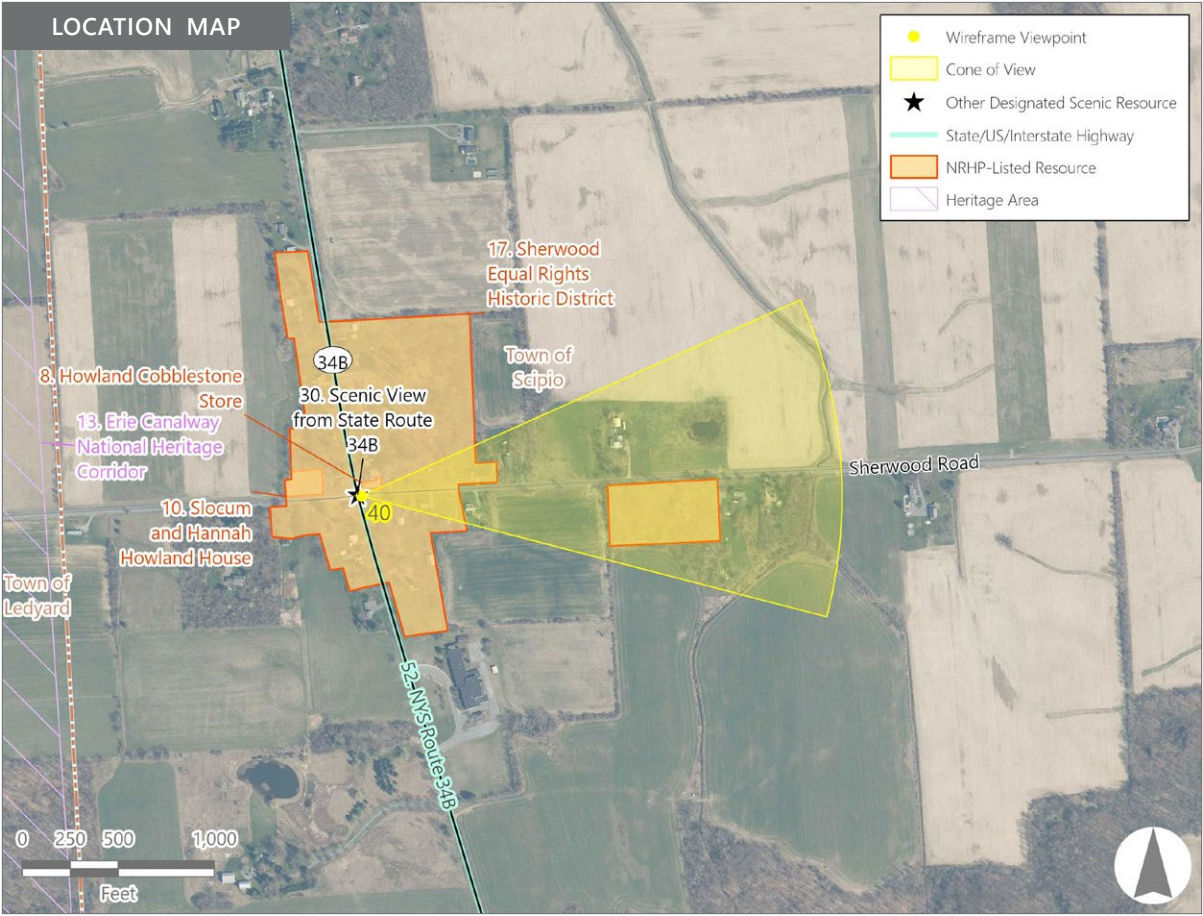
PHOTOGRAPH INFORMATION

Date:	March 12, 2024
Time:	12:37 PM
Camera:	Canon EOS 5D Mark IV
Camera Resolution:	30.4 Megapixels
Lens Focal Length (35 mm sensor equivalent):	50 mm
Camera Elevation:	1,057 feet
Field of View:	39 degrees
Direction of View:	East
Printed Size:	10 inches x 15 inches
Viewing Distance**:	21 inches

NOTES

\*Distance as measured from the viewpoint to the closest wind turbine within the simulated photograph's field of view.

\*\*The wireframe rendering is at the correct perspective when printed on an 11 inch by 17 inch sheet at full scale, and viewed approximately 21 inches from the eye of the viewer.



Agricola Wind Project

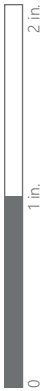
Towns of Venice and Scipio, Cayuga County, New York

Visual Impact Assessment  
Appendix 8-A



*Note: Printed at actual size, the existing view image is 15 inches wide by 10 inches high. At this size and focal length, the existing view image should be viewed from a distance 21 inches from the eye of the viewer.*

EXISTING VIEW



This scale is to ensure the simulation images are printed at the intended size.

VIEWPOINT 40

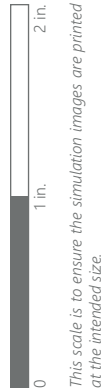
State Route 34B and Sherwood Road

**Agricola Wind Project**  
Visual Impact Assessment, Appendix 8-A, Attachment D





WIREFRAME RENDERING



VIEWPOINT 40  
State Route 34B and Sherwood Road

**Agricola Wind Project**  
Visual Impact Assessment, Appendix 8-A, Attachment D



*Note: Printed at actual size, the resulting wireframe rendering is 15 inches wide by 10 inches high. At this size and focal length, the rendering should be viewed from a distance 21 inches from the eye of the viewer.*



Note: The image above is a panorama composition panning clockwise from northwest (left) to east (right).

VIEWPOINT 51  
State Route 90

LOCATION INFORMATION

Municipality:	Town of Genoa
County:	Cayuga
Latitude:	42.66751° N
Longitude:	76.54407° W
Wind Turbine Distance*:	3.7 miles
Distance Zone Represented:	Middle Ground
Landscape Similarity Zone:	Agricultural/Rural Residential
Viewer/User Group(s):	Local Residents, Through-Travelers, Tourists/Recreational Users

Visually Sensitive Resource(s):

VSR ID # 24	Scenic Route 90 State Scenic Byway
VSR ID # 32	Erie Canalway National Heritage Corridor

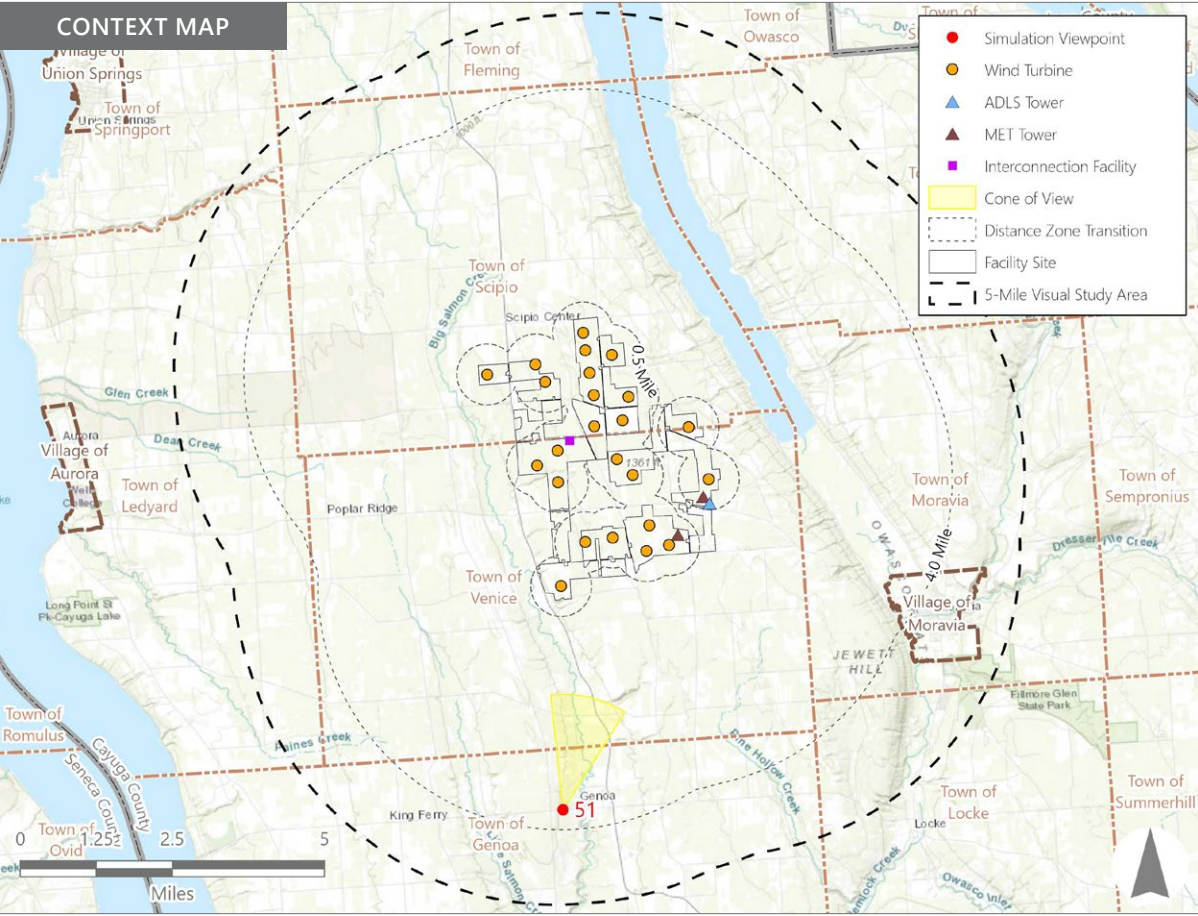
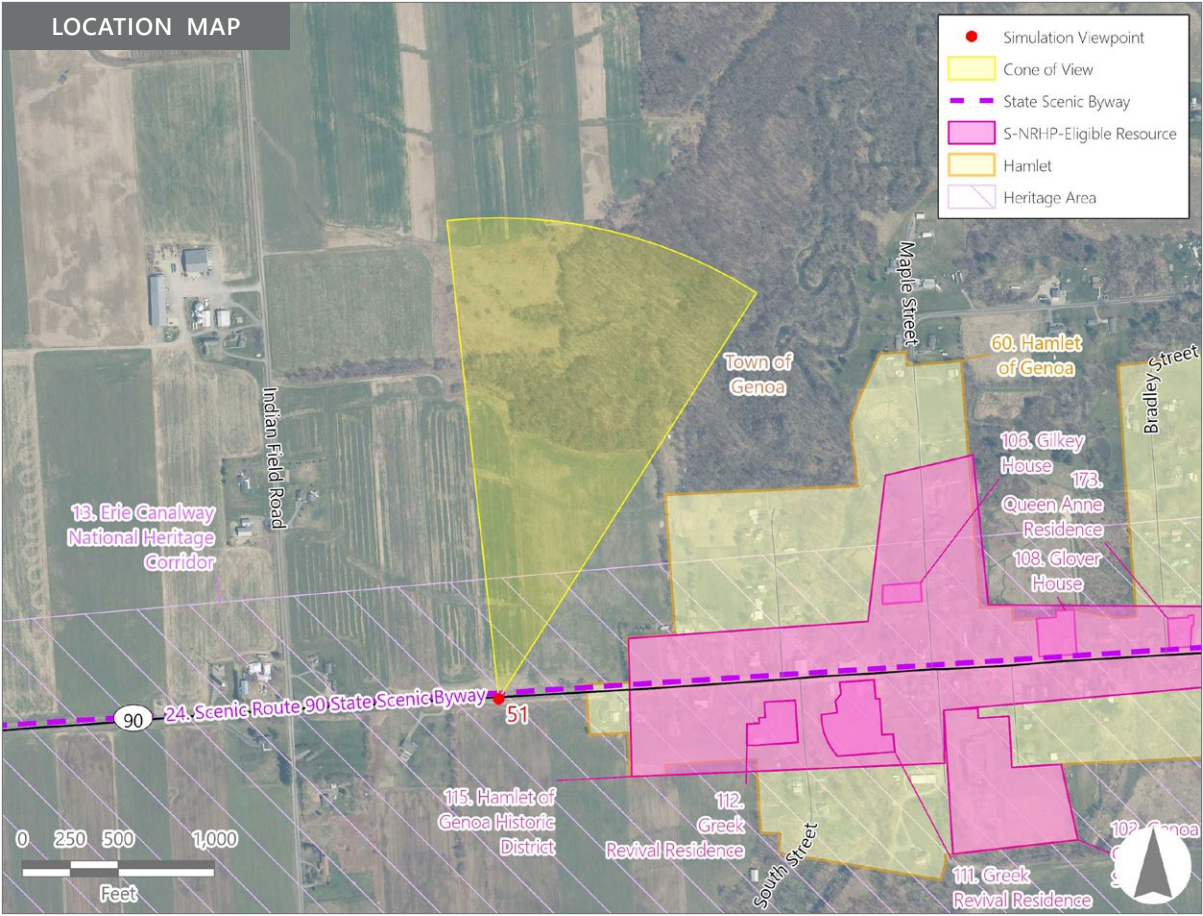
PHOTOGRAPH INFORMATION

Date:	March 12, 2024
Time:	2:32 PM
Camera:	Canon EOS 5D Mark IV
Camera Resolution:	30.4 Megapixels
Lens Focal Length (35 mm sensor equivalent):	50 mm
Camera Elevation:	956 feet
Field of View:	39 degrees
Direction of View:	Northeast
Printed Size:	10 inches x 15 inches
Viewing Distance**:	21 inches

NOTES

\*Distance as measured from the viewpoint to the closest wind turbine within the simulated photograph's field of view.

\*\*The simulation is at the correct perspective when printed on an 11 inch by 17 inch sheet at full scale, and viewed approximately 21 inches from the eye of the viewer.



Agricola Wind Project

Towns of Venice and Scipio, Cayuga County, New York

Visual Impact Assessment  
Appendix 8-A

VIEWPOINT 51

State Route 90

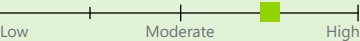


Existing View

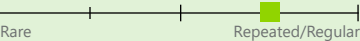
Viewpoint 51 is located on State Route 90 in the Town of Genoa, approximately 3.7 miles from the nearest proposed wind turbine that would be visible in the selected photograph's field of view. This viewpoint is in the Agricultural/Rural Residential LSZ, and typical viewers are local residents, through travelers, and tourist/recreational users (sightseers). Views in this general area feature rolling hills dominated by forest and open fields, interspersed with clusters of buildings along the frontage of the state highway. In the selected photo, the existing view to the northeast includes the road edge in the immediate foreground, bordered by an unmowed ditch and a gently sloping agricultural field that extends to a woodlot in the middle ground. The woodlot blocks views of more distant landscape features on the left side of the view, but as the land descends to the right, views of a wooded valley and background hillside become available. The background hillside is a mix of forest and open fields interspersed with occasional farm and residential structures. The crest of the hill creates a gently sloping wooded horizon line against a clear blue sky. The view has a strong rural character, and its scenic value is enhanced by the rolling topography and availability of long-distance views. However, lack of foreground features or interesting focal points results in moderate overall scenic quality.

Viewpoint Sensitivity<sup>1</sup>:

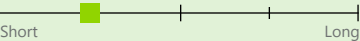
Scenic Quality:



View Frequency:



View Duration:



<sup>1</sup>Viewpoint Sensitivity information is gathered from rating panel results. Scenic Quality and Viewer Exposure indicated in this table reflects all ratings by the rating panel.



Proposed View

With the proposed Facility in place, the upper portions of several turbines are visible above the middle ground tree line and background ridgetop. Trees in the middle ground woodlot provide significant screening of two of the turbines, limiting views to the blades or blade tips. The presence of these trees, in combination with the distance of the turbines from the viewer, reduces their perceived scale contrast. Their white color and narrow profile also reduce color contrast and prominence against the blue sky. The turbines impact only a small portion of the view, and although clearly visible, do not alter the rural agricultural character and scenic quality of the existing view.

Visual Contrast Rating Results Summary

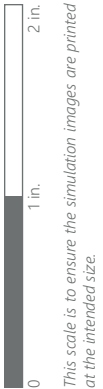
Landscape Component	Score	Rating
Landform	0.5	Insignificant/Minimal
Vegetation	0.8	Minimal
Land Use	1.2	Minimal
Water	N/A	N/A
Sky	1.0	Minimal
Viewer Activity	0.8	Minimal
Overall Average	0.9	Minimal

Agricola Wind Project

Towns of Venice and Scipio, Cayuga County, New York

Visual Impact Assessment  
Appendix 8-A

EXISTING VIEW



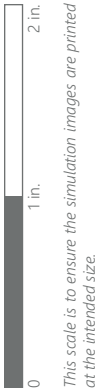
VIEWPOINT 51  
State Route 90

**Agricola Wind Project**  
*Visual Impact Assessment, Appendix 8-A, Attachment D*



*Note: Printed at actual size, the existing view image is 15 inches wide by 10 inches high. At this size and focal length, the existing view image should be viewed from a distance 21 inches from the eye of the viewer.*

PHOTOSIMULATION

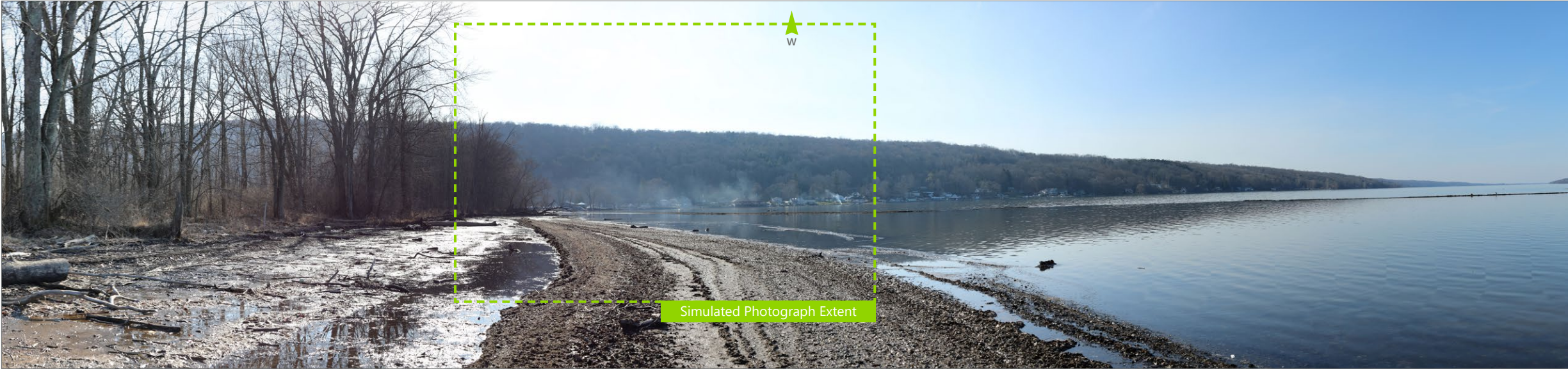


VIEWPOINT 51  
State Route 90

**Agricola Wind Project**  
*Visual Impact Assessment, Appendix 8-A, Attachment D*



*Note: Printed at actual size, the resulting simulation image is 15 inches wide by 10 inches high. At this size and focal length, the simulation should be viewed from a distance 21 inches from the eye of the viewer.*



Note: The image above is a panorama composition panning clockwise from southwest (left) to northwest (right).

VIEWPOINT 59  
Owasco Flats Nature Preserve

LOCATION INFORMATION

Municipality:	Town of Moravia
County:	Cayuga
Latitude:	42.75547° N
Longitude:	76.46499° W
Wind Turbine Distance*:	1.7 miles
Distance Zone Represented:	Middle Ground
Landscape Similarity Zone:	Owasco Lake
Viewer/User Group(s):	Local Residents, Tourists/ Recreational Users

Visually Sensitive Resource(s):	
VSR ID # 46	Owasco Flats Nature Preserve
VSR ID # 50	Owasco Lake

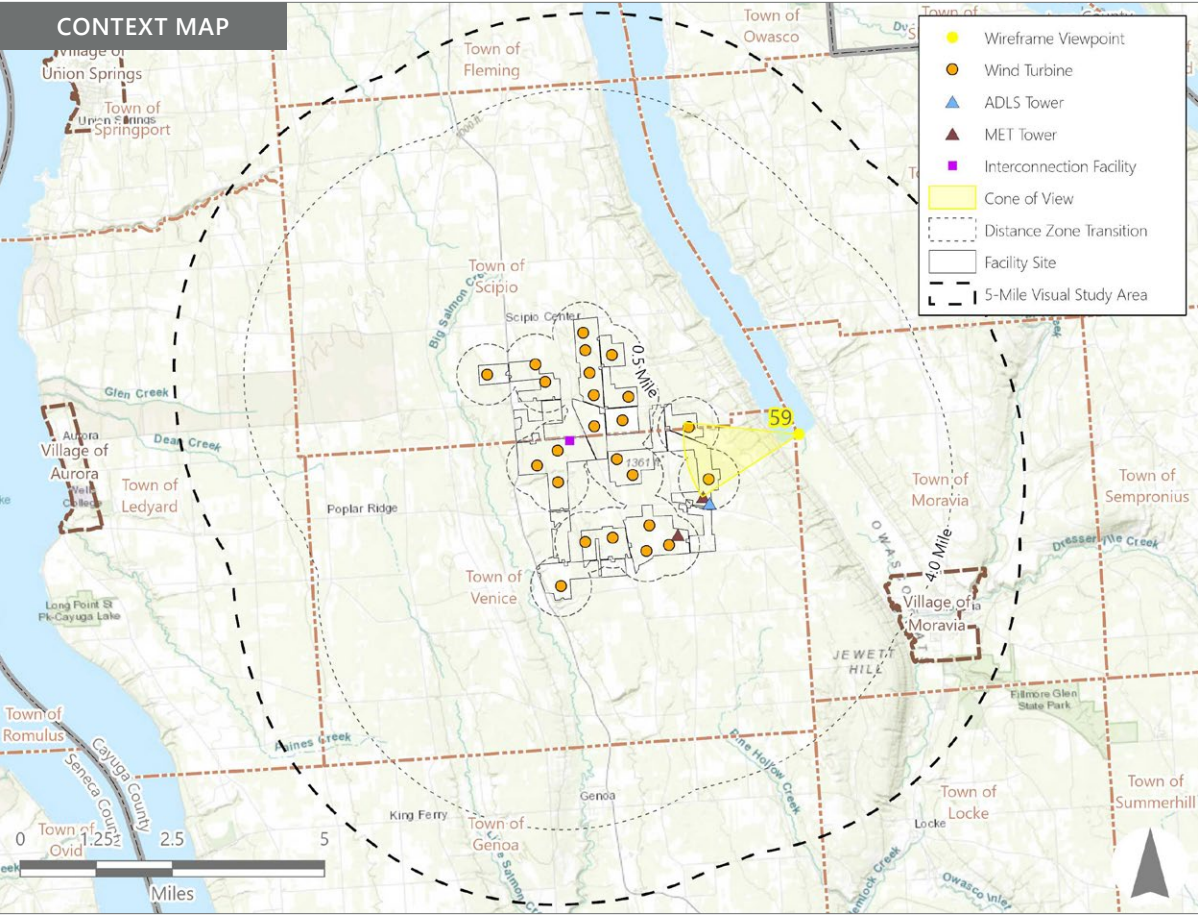
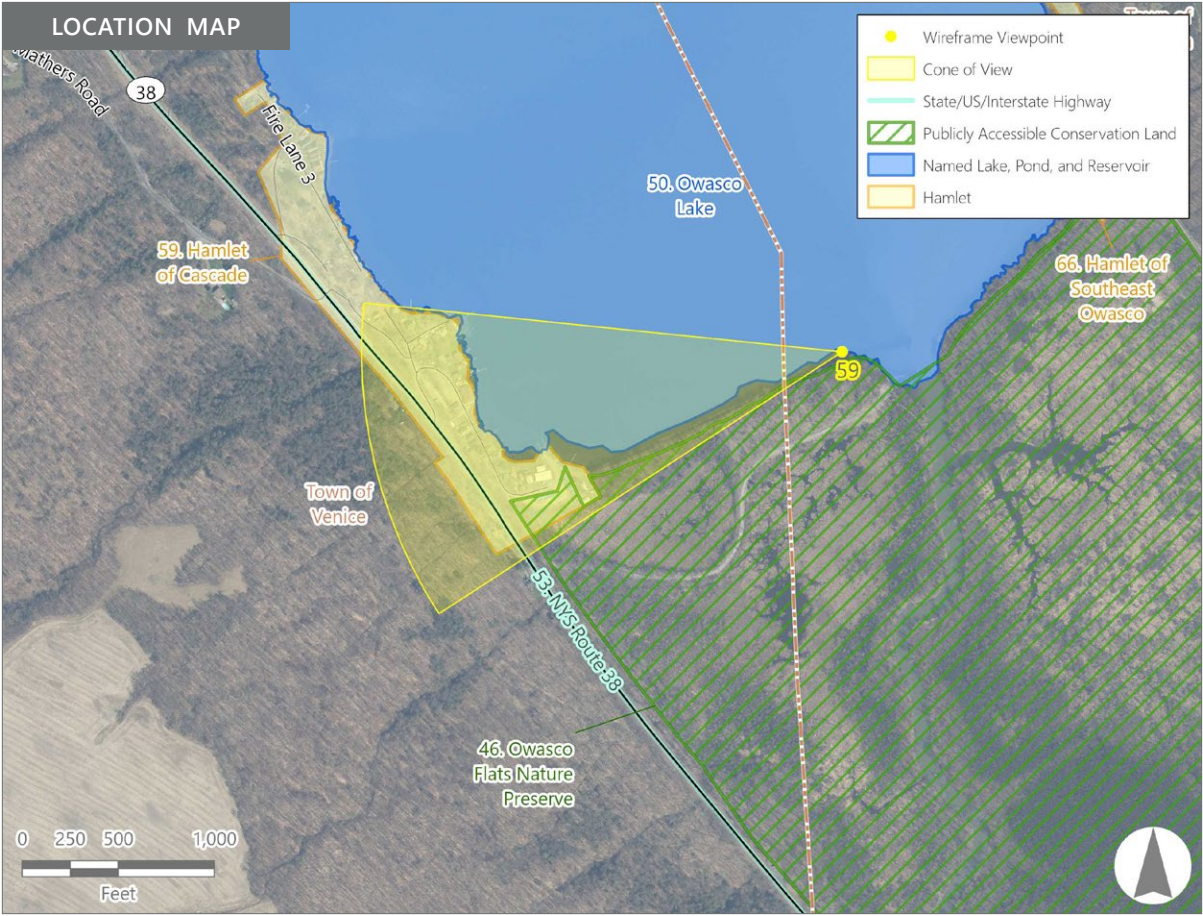
PHOTOGRAPH INFORMATION

Date:	March 12, 2024
Time:	4:39 PM
Camera:	Canon EOS 5D Mark IV
Camera Resolution:	30.4 Megapixels
Lens Focal Length (35 mm sensor equivalent):	50 mm
Camera Elevation:	712 feet
Field of View:	39 degrees
Direction of View:	West
Printed Size:	10 inches x 15 inches
Viewing Distance**:	21 inches

NOTES

\*Distance as measured from the viewpoint to the closest wind turbine within the simulated photograph's field of view.

\*\*The wireframe rendering is at the correct perspective when printed on an 11 inch by 17 inch sheet at full scale, and viewed approximately 21 inches from the eye of the viewer.



Agricola Wind Project

Towns of Venice and Scipio, Cayuga County, New York

Visual Impact Assessment  
Appendix 8-A

EXISTING VIEW



*Note: Printed at actual size, the existing view image is 15 inches wide by 10 inches high. At this size and focal length, the existing view image should be viewed from a distance 21 inches from the eye of the viewer.*

WIREFRAME RENDERING



*Note: Printed at actual size, the resulting wireframe rendering is 15 inches wide by 10 inches high. At this size and focal length, the rendering should be viewed from a distance 21 inches from the eye of the viewer.*



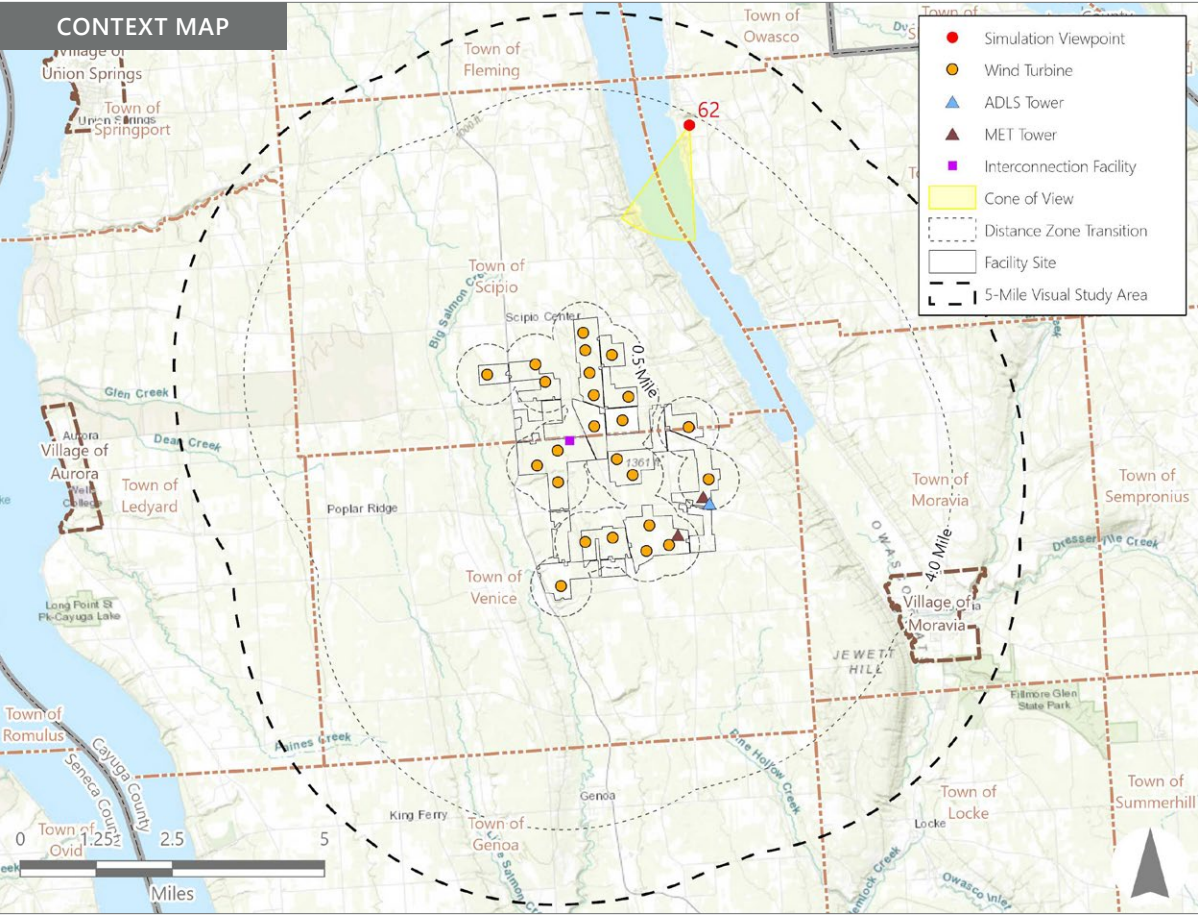
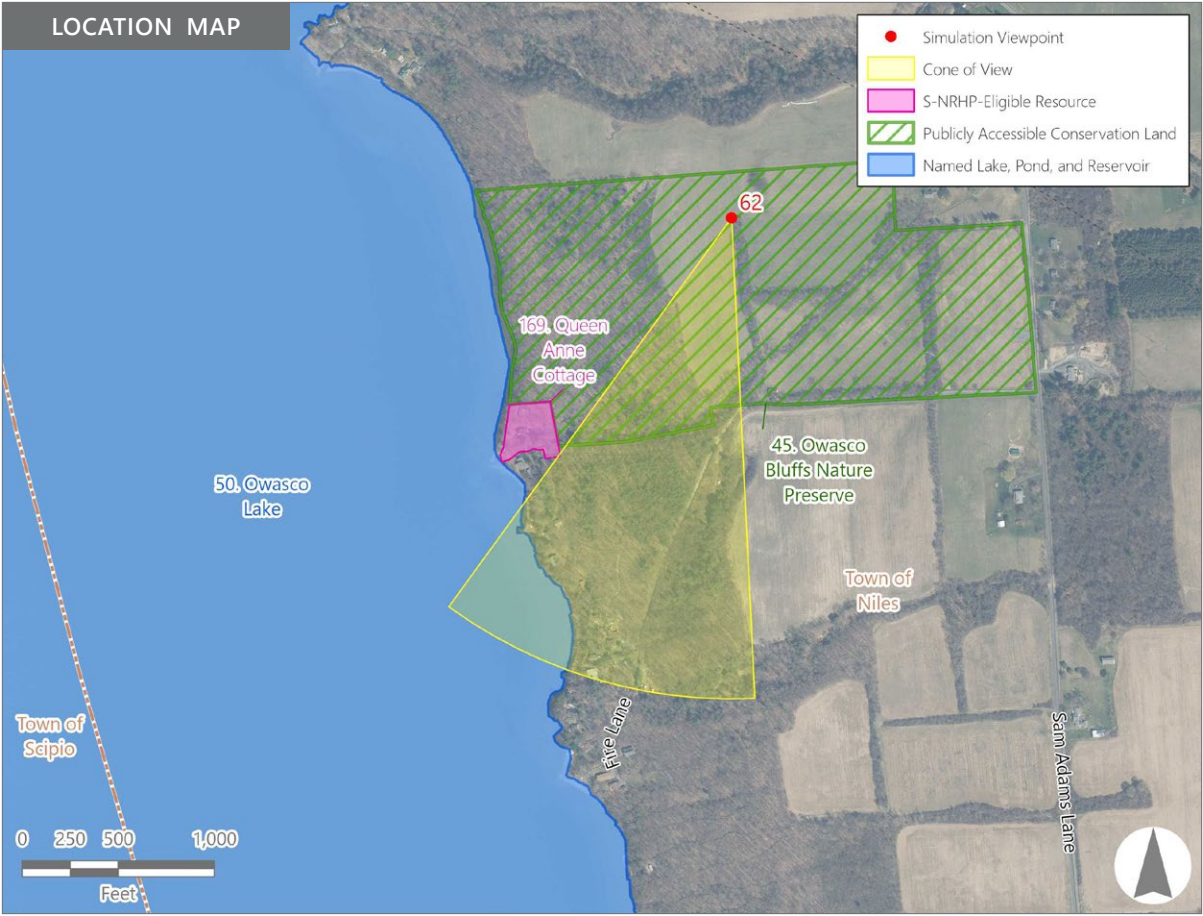
Note: The image above is a panorama composition panning clockwise from south (left) to northwest (right).

VIEWPOINT 62  
Owasco Bluffs Nature Preserve

LOCATION INFORMATION

Municipality:	Town of Niles
County:	Cayuga
Latitude:	42.82963° N
Longitude:	76.49788° W
Wind Turbine Distance*:	3.8 miles
Distance Zone Represented:	Middle Ground
Landscape Similarity Zone:	Agricultural/Rural Residential
Viewer/User Group(s):	Local Residents, Tourists/ Recreational Users

Visually Sensitive Resource(s):  
VSR ID # 45                      Owasco Bluffs Nature Preserve



PHOTOGRAPH INFORMATION

Date:	March 12, 2024
Time:	4:43 PM
Camera:	Canon EOS 5D Mark IV
Camera Resolution:	30.4 Megapixels
Lens Focal Length (35 mm sensor equivalent):	50 mm
Camera Elevation:	909 feet
Field of View:	39 degrees
Direction of View:	South-southwest
Printed Size:	10 inches x 15 inches
Viewing Distance**:	21 inches

NOTES

\*Distance as measured from the viewpoint to the closest wind turbine within the simulated photograph's field of view.

\*\*The simulation is at the correct perspective when printed on an 11 inch by 17 inch sheet at full scale, and viewed approximately 21 inches from the eye of the viewer.

VIEWPOINT 62

Owasco Bluffs Nature Preserve

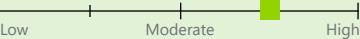


Existing View

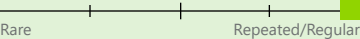
Viewpoint 62 is located at the Owasco Bluffs Nature Preserve in the Town of Niles, approximately 3.8 miles from the nearest proposed wind turbine that would be visible in the selected photo's field of view. This viewpoint occurs in the Agricultural/Rural Residential LSZ, and typical viewers include local residents as well as tourists/recreational users of the nature preserve. Views in this general area include large hilltop agricultural fields bordered by trees that provide long distance views across the adjacent valley where Owasco Lake is located. In the selected photo, the view to the south southwest features an open hayfield that extends from the immediate foreground to a middle ground tree line. Beyond the tree line the land descends out of sight into a broad valley. The valley includes Owasco Lake, but the lake itself is screened from view. A distant, hazy ridgeline on the opposite side of the valley that can be seen through and above the branches of the middle ground trees is the only visible background feature. The trees in the middle ground largely enclosed the view and will be even more effective in doing so during the growing season. The view has an undeveloped rural character, but the feeling of enclosure and lack of foreground features, focal points, or vegetative variability result in moderate scenic quality

Viewpoint Sensitivity<sup>1</sup>:

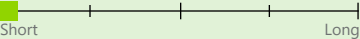
Scenic Quality:



View Frequency:



View Duration:



<sup>1</sup>Viewpoint Sensitivity information is gathered from rating panel results. Scenic Quality and Viewer Exposure indicated in this table reflects all ratings by the rating panel.



Proposed View

With the proposed Facility in place, 10 wind turbines can be seen rising into the sky above the background ridge. Due to backlighting, the turbines appeared dark against the bright sky. However, most of the turbines are substantially obscured by the middle ground tree line. The narrow profile of the blades, and backlighting of both the turbines and the middle ground trees, help the blades blend in with the bare tree branches. Three of the turbines are unscreened by the middle ground trees, but due to their distance from the viewer, do not extend higher into the sky than the adjacent branches of the tree line. However, these three turbines are tightly clumped, and their blades overlap, which looks unnatural and draws viewer attention. This, in combination with their movement and location on the horizon, make these turbines a focal point in the view. However, they affect only a small portion of the view and do not significantly alter the view's rural agricultural character and scenic quality.

Visual Contrast Rating Results Summary

Landscape Component	Score	Rating
Landform	0.3	Insignificant/Minimal
Vegetation	0.7	Insignificant/Minimal
Land Use	1.0	Minimal
Water	N/A	N/A
Sky	1.5	Minimal/Moderate
Viewer Activity	1.0	Minimal
Overall Average	0.9	Minimal

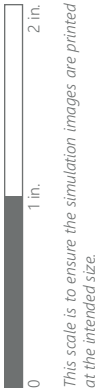
Agricola Wind Project

Towns of Venice and Scipio, Cayuga County, New York

Visual Impact Assessment  
Appendix 8-A



EXISTING VIEW



VIEWPOINT 62  
Owasco Bluffs Nature Preserve

*Note: Printed at actual size, the existing view image is 15 inches wide by 10 inches high. At this size and focal length, the existing view image should be viewed from a distance 21 inches from the eye of the viewer.*



PHOTOSIMULATION

*Note: Printed at actual size, the resulting simulation image is 15 inches wide by 10 inches high. At this size and focal length, the simulation should be viewed from a distance 21 inches from the eye of the viewer.*

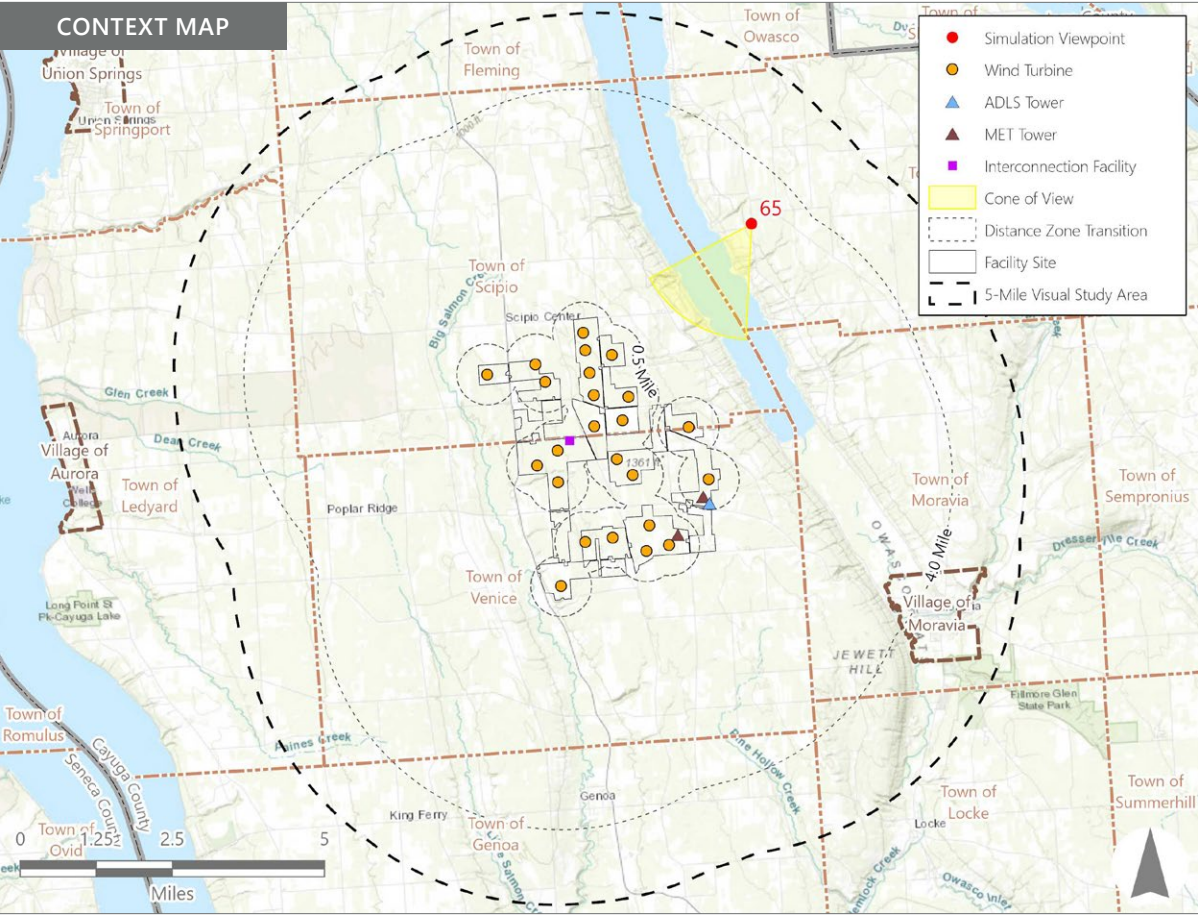
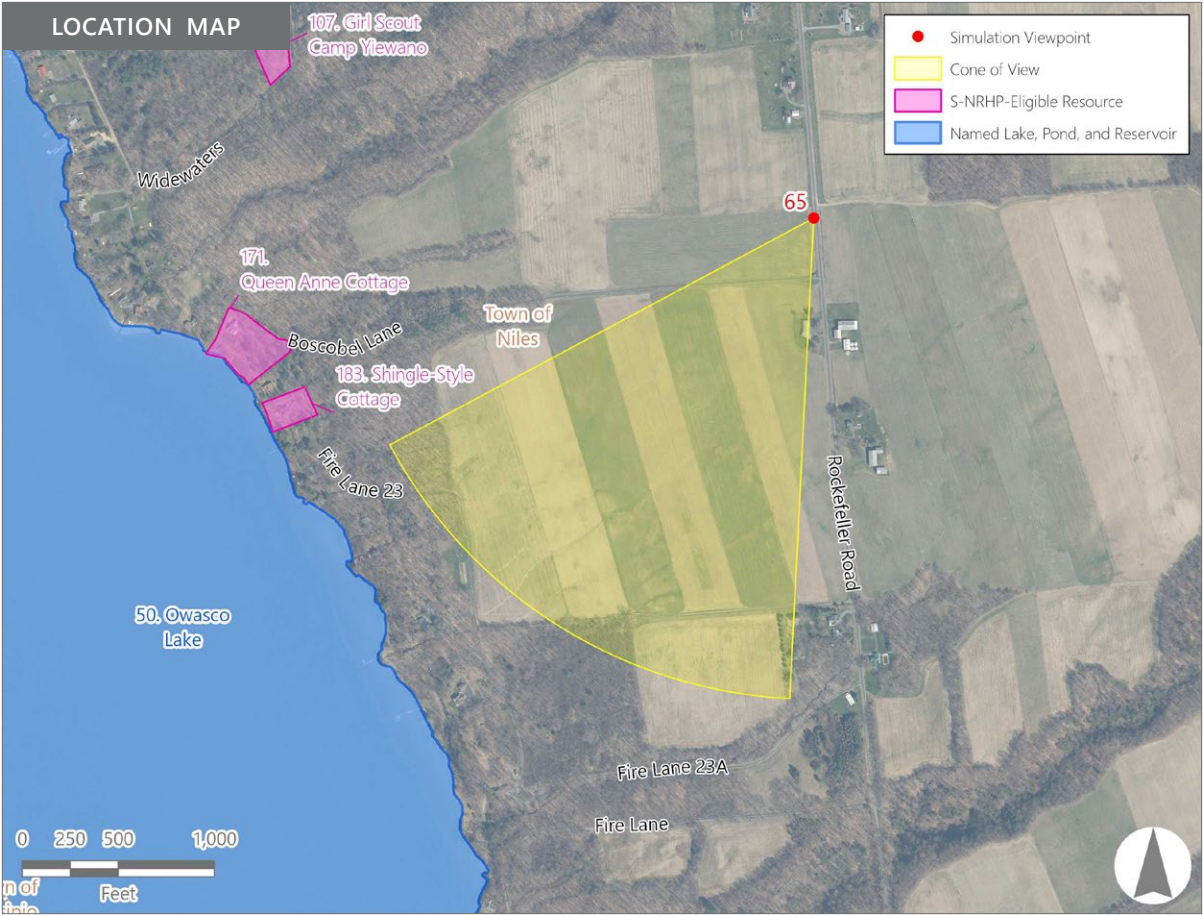


Note: The image above is a panorama composition panning clockwise from south (left) to northwest (right).

VIEWPOINT 65  
Rockefeller Road

LOCATION INFORMATION

Municipality:	Town of Niles
County:	Cayuga
Latitude:	42.80582° N
Longitude:	76.47857° W
Wind Turbine Distance*:	3.2 miles
Distance Zone Represented:	Middle Ground
Landscape Similarity Zone:	Agricultural/Rural Residential
Viewer/User Group(s):	Local Residents
Visually Sensitive Resource(s):	None Identified



PHOTOGRAPH INFORMATION

Date:	March 12, 2024
Time:	5:26 PM
Camera:	Canon EOS 5D Mark IV
Camera Resolution:	30.4 Megapixels
Lens Focal Length (35 mm sensor equivalent):	50 mm
Camera Elevation:	1,057 feet
Field of View**:	59 degrees
Direction of View:	South to west-southwest
Printed Size:	10 inches x 15 inches
Viewing Distance***:	21 inches

NOTES

\*Distance as measured from the viewpoint to the closest wind turbine within the simulated photograph's field of view.

\*\*The simulated field of view is comprised of multiple single frame simulations, each with a field of view of 39 degrees.

\*\*\*The single-frame photograph simulations are at the correct perspective when printed on an 11 inch by 17 inch sheet at full scale, and viewed approximately 21 inches from the eye of the viewer.

VIEWPOINT 65

Rockefeller Road



Existing View

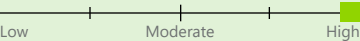


Proposed View

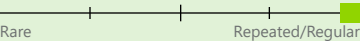
Viewpoint 65 is located on Rockefeller Road in the Town of Niles, approximately 3.2 miles from the nearest proposed wind turbine that would be visible in the selected photo's field of view. It occurs in the Agricultural/Rural Residential LSZ, and typical viewers are local residents. Views in this general area feature high elevation open fields and woodlots that overlook the valley where Owasco Lake is located. Scattered rural homes and farms occur along the road frontage. In the selected photo, the existing view to the southwest from this location features a sloping open field that extends from the immediate foreground to the middle ground, where it descends into a valley and out of sight. Visible middle ground features are limited to a home and associated yard trees on the left side of the view and treetops associated with a lower elevation woodlot on the right. The foreground topography blocks views of Owasco Lake, but the ridgeline on the opposite side of the lake rises into view in the background. Due to its distance from the viewer, the ridge is hazy but includes a mix of forests and fields with occasional built structures also visible. The top of the ridgeline meets a bright white sky and blocks views of more distant landscape features. Other than the trees associated with the residence on the left, the sky is open and unobstructed. This view has an open expansive feel, result in moderate/high scenic quality.

Viewpoint Sensitivity<sup>1</sup>:

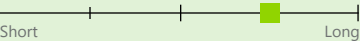
Scenic Quality:



View Frequency:



View Duration:



<sup>1</sup>Viewpoint Sensitivity information is gathered from rating panel results. Scenic Quality and Viewer Exposure indicated in this table reflects all ratings by the rating panel.

With the proposed Facility in place, numerous wind turbines rise above the background ridge line across the panoramic photo's full field of view. Due to their varying distance from the viewer, the amount of each turbine that is visible is variable, ranging from almost fully visible to only the blade tips being visible above the ridge line. However, regardless of their degree of exposure, all the turbines are highly visible due to a lack of foreground and middle ground screening, along with backlighting which makes the turbines appear dark against the light sky. The number and scale of the turbines makes them the focal point of the view and reduces the perceived distance of the background ridge from the viewer. The turbines are widely spaced which maintains the view's open, expansive character and reduces visual clutter. However, the presence of numerous turbines alters the perceived land use and scenic quality of the view.

Visual Contrast Rating Results Summary

Landscape Component	Score	Rating
Landform	2.0	Moderate
Vegetation	1.8	Moderate
Land Use	2.8	Appreciable
Water	2.0	Moderate
Sky	3.0	Appreciable
Viewer Activity	2.3	Moderate/Appreciable
Overall Average	2.3	Moderate/Appreciable

Agricola Wind Project

Towns of Venice and Scipio, Cayuga County, New York

Visual Impact Assessment  
Appendix 8-A

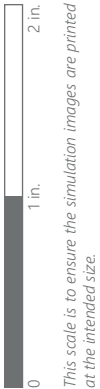
EXISTING VIEW (1 OF 2)



*Note: Printed at actual size, the existing view image is 15 inches wide by 10 inches high. At this size and focal length, the existing view image should be viewed from a distance 21 inches from the eye of the viewer.*



*Note: Printed at actual size, the resulting simulation image is 15 inches wide by 10 inches high. At this size and focal length, the simulation should be viewed from a distance 21 inches from the eye of the viewer.*



VIEWPOINT 65  
Rockefeller Road

EXISTING VIEW (2 OF 2)



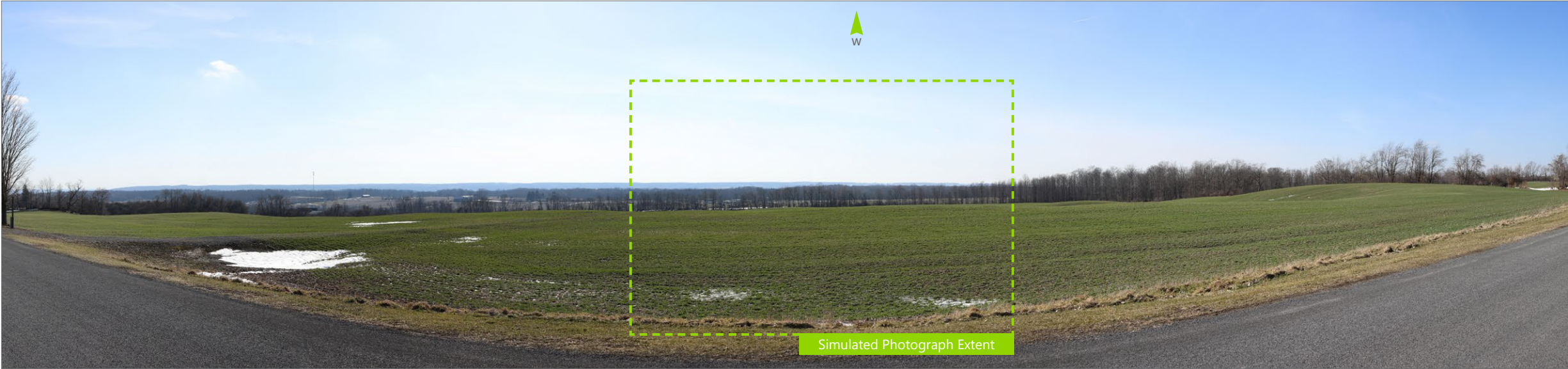
*Note: Printed at actual size, the existing view image is 15 inches wide by 10 inches high. At this size and focal length, the existing view image should be viewed from a distance 21 inches from the eye of the viewer.*



*Note: Printed at actual size, the resulting simulation image is 15 inches wide by 10 inches high. At this size and focal length, the simulation should be viewed from a distance 21 inches from the eye of the viewer.*





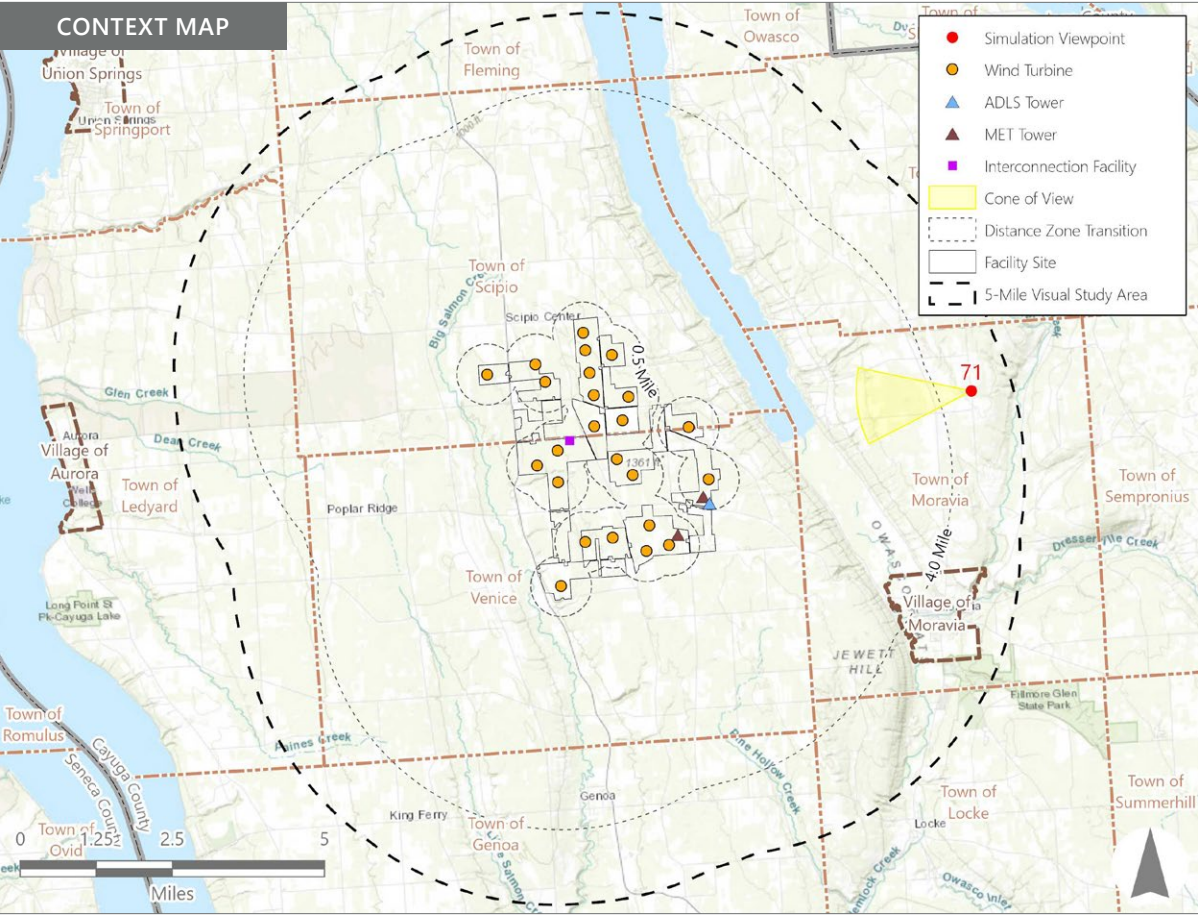
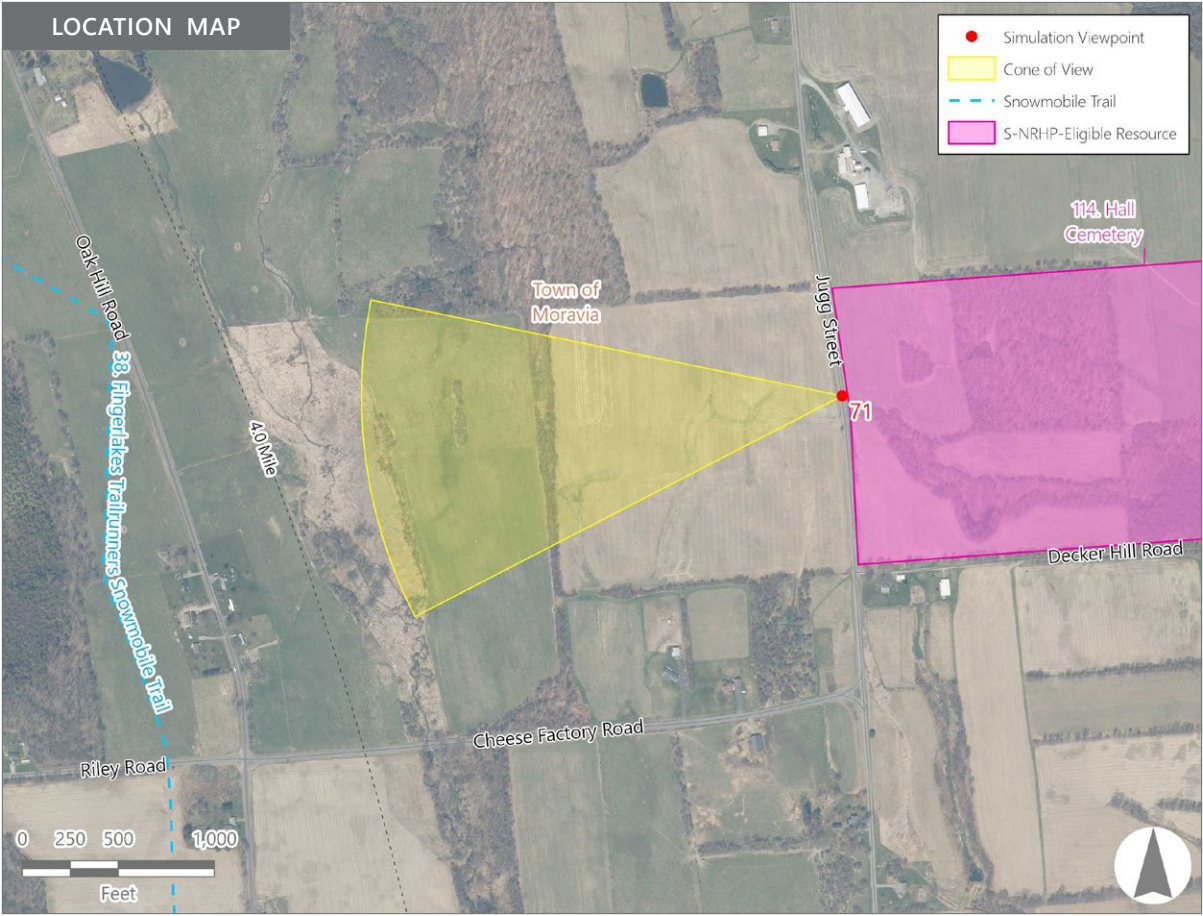


Note: The image above is a panorama composition panning clockwise from south (left) to northwest (right).

VIEWPOINT 71  
Jugg Street

LOCATION INFORMATION

Municipality:	Town of Moravia
County:	Cayuga
Latitude:	42.76470° N
Longitude:	76.40889° W
Wind Turbine Distance*:	4.6 miles
Distance Zone Represented:	Background
Landscape Similarity Zone:	Agricultural/Rural Residential
Viewer/User Group(s):	Local Residents
Visually Sensitive Resource(s):	
VSR ID # 114	Hall Cemetery



PHOTOGRAPH INFORMATION

Date:	March 12, 2024
Time:	4:11 PM
Camera:	Canon EOS 5D Mark IV
Camera Resolution:	30.4 Megapixels
Lens Focal Length (35 mm sensor equivalent):	50 mm
Camera Elevation:	1,439 feet
Field of View**:	39 degrees
Direction of View:	West
Printed Size:	10 inches x 15 inches
Viewing Distance***:	21 inches

NOTES

\*Distance as measured from the viewpoint to the closest wind turbine within the simulated photograph's field of view.

\*\*The simulated field of view is comprised of multiple single frame simulations, each with a field of view of 39 degrees.

\*\*\*The simulation is at the correct perspective when printed on an 11 inch by 17 inch sheet at full scale, and viewed approximately 21 inches from the eye of the viewer.

VIEWPOINT 71

Jugg Street



Existing View

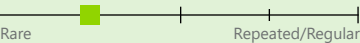
Viewpoint 71 is located on Jugg Street in the Town of Moravia, approximately 4.6 miles from the nearest proposed wind turbine that would be visible in the selected photo’s field of view. It is in the Agricultural/Rural Residential LSZ, and typical viewers include local residents and visitors to the nearby Hall Cemetery. Views in this general area include large, high elevation open fields interspersed with woodlots, hedgerows, and widely scattered farm and residential structures. In the selected photo, the existing view to the west features a level hay field in the foreground that extends to a thin middle ground hedgerow. Beyond the hedgerow, the land continues its gentle descent and includes additional fields and woodlots that are visible through the bare branches of the trees in the hedgerow. A dark horizontal band of forest vegetation spans the view in the background, above which a hazy blue ridge forms a distant horizon line. The view is open and expansive with strong horizontal lines and an unobscured open sky. Despite the availability of long-distance views, scenic quality is moderate due to the relatively level topography and lack of foreground features or focal points.

Viewpoint Sensitivity<sup>1</sup>:

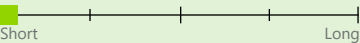
Scenic Quality:



View Frequency:



View Duration:



<sup>1</sup>Viewpoint Sensitivity information is gathered from rating panel results. Scenic Quality and Viewer Exposure indicated in this table reflects all ratings by the rating panel.



Proposed View

With the proposed Facility in place, numerous turbines rise above the distant background ridgeline. Due to their distance from the viewer, the turbines appear hazy and delicate. Their degree of exposure varies with their distance from the viewer, but for most, the majority of the tower is visible. Backlighting increases the turbines’ color contrast with the sky, but distance and the effects of atmospheric perspective serve to moderate this contrast. Despite their distance from the viewer, their line and scale contrast with the background vegetation and land form is notable. The vertical line of the individual turbines and their line up across the horizon are consistent with the line and arrangement of the trees in the middle ground hedgerow. Because they are the only features that extend above the horizon, along with their abundance and lack of other developed features, the turbines are now the focal point in this view. However, they do not alter the character or scenic quality of the landscape that dominates this view. Rather they introduce a new land use (a wind farm) into the distant background.

Visual Contrast Rating Results Summary

Landscape Component	Score	Rating
Landform	1.3	Minimal/Moderate
Vegetation	1.2	Minimal
Land Use	2.3	Moderate/Appreciable
Water	N/A	N/A
Sky	2.5	Moderate/Appreciable
Viewer Activity	2.0	Moderate
Overall Average	1.9	Moderate

Agricola Wind Project

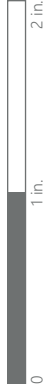
Towns of Venice and Scipio, Cayuga County, New York

Visual Impact Assessment  
Appendix 8-A

EXISTING VIEW



*Note: Printed at actual size, the existing view image is 15 inches wide by 10 inches high. At this size and focal length, the existing view image should be viewed from a distance 21 inches from the eye of the viewer.*



*This scale is to ensure the simulation images are printed at the intended size.*

VIEWPOINT 71  
Jugg Street

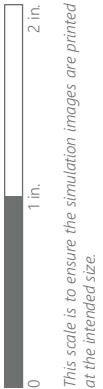
**Agricola Wind Project**  
*Visual Impact Assessment, Appendix 8-A, Attachment D*



PHOTOSIMULATION



*Note: Printed at actual size, the resulting simulation image is 15 inches wide by 10 inches high. At this size and focal length, the simulation should be viewed from a distance 21 inches from the eye of the viewer.*



**VIEWPOINT 71**  
Jugg Street

**Agricola Wind Project**  
Visual Impact Assessment, Appendix 8-A, Attachment D

