

**Agricola Wind Project**

Towns of Venice and Scipio,  
Cayuga County, New York

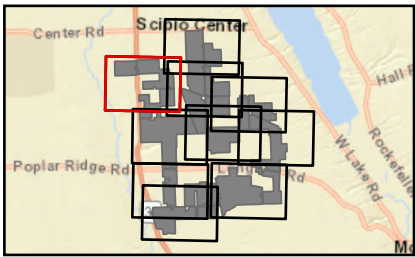
**Article VIII Permit Application  
Matter No. 23-00064**

Ecological Community

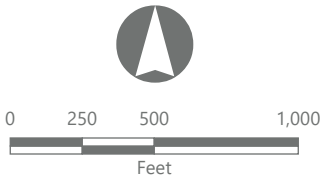
- Developed/disturbed
- Cropland/Row Crops
- Beech-maple mesic forest
- Maple-basswood rich mesic forest
- Successional northern hardwoods
- Successional old field
- Successional shrubland
- Stream
- Wetland

Facility Components

- Wind Turbine
- Access Road
- Underground Collection Line
- Temporary Turning Improvement
- Limit of Impervious Surface
- Limit of Vegetation Management
- Limit of Disturbance
- Plant Community Study Area
- Facility Site

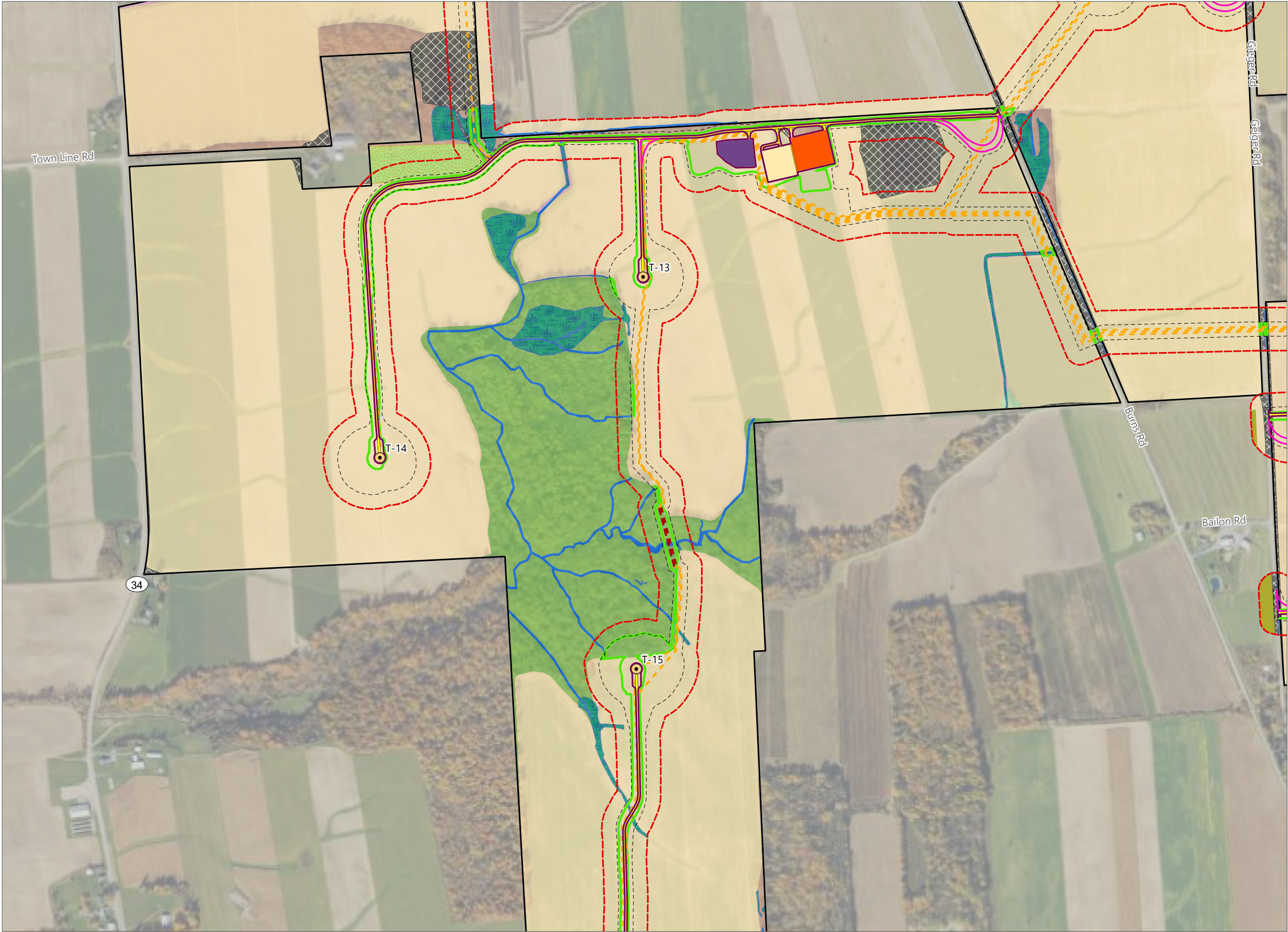


Sheet 1 of 10



Prepared October 30, 2024  
Basemap: USDA NAIP "2022 New York 60cm" orthoimagery map service

Figure 11-1. Plant Communities

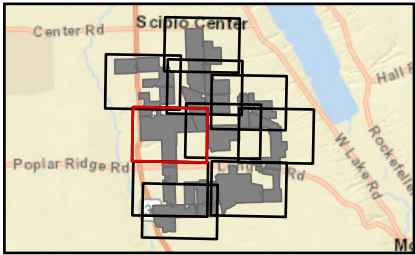


**Agricola Wind Project**

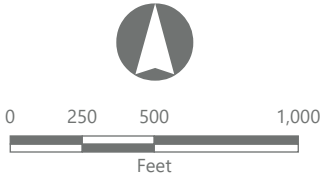
Towns of Venice and Scipio,  
Cayuga County, New York

**Article VIII Permit Application  
Matter No. 23-00064**

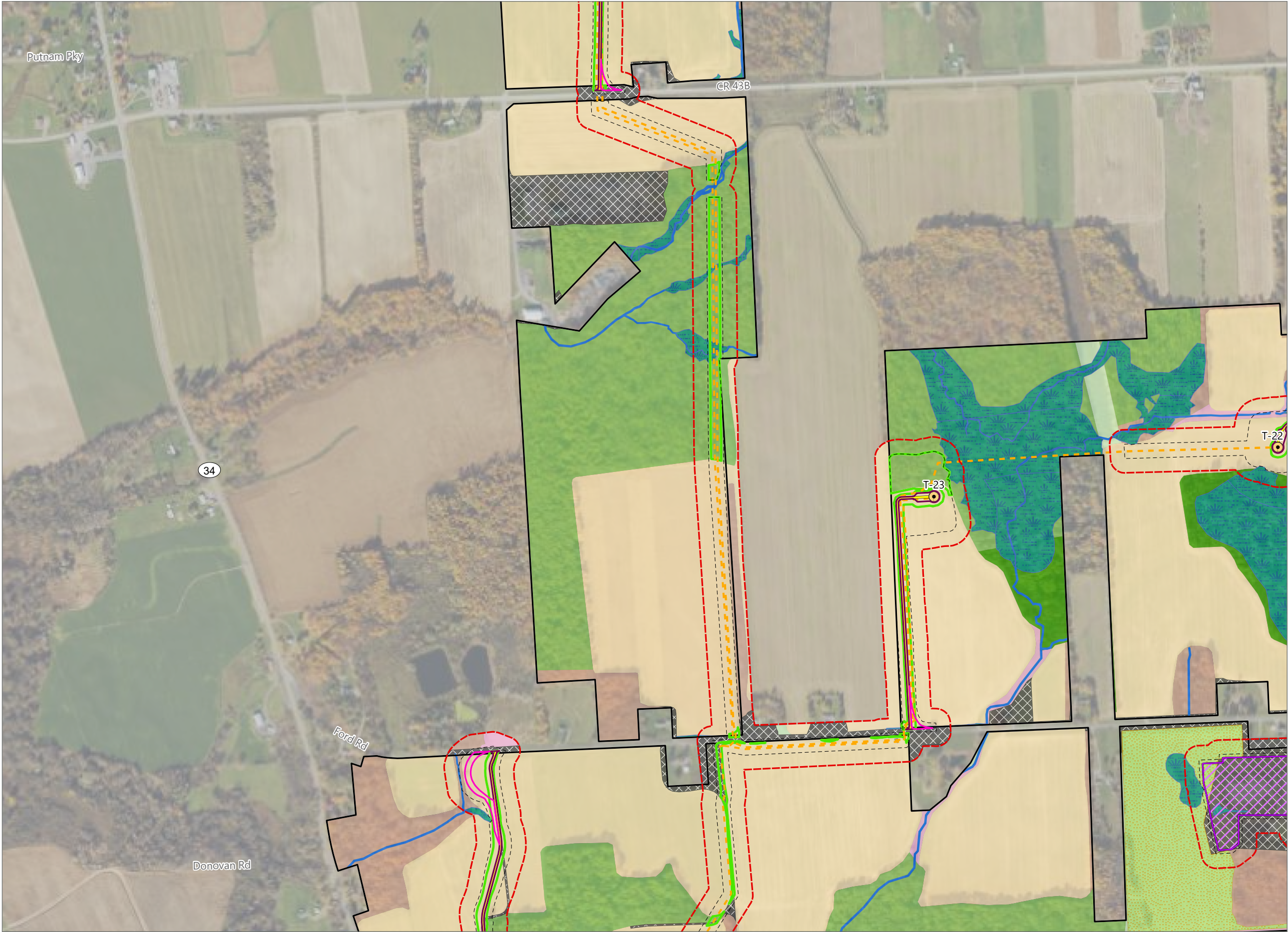
- Ecological Community
- Developed/disturbed
  - Cropland/Field Crops
  - Cropland/Row Crops
  - Pastureland
  - Beech-maple mesic forest
  - Successional northern hardwoods
  - Successional old field
  - Successional shrubland
  - Stream
  - Wetland
- Facility Components
- Wind Turbine
  - Access Road
  - Overhead Collection Line
  - Underground Collection Line
  - Collection Substation
  - POI Substation
  - O&M Facility
  - Temporary Turning Improvement
  - Limit of Impervious Surface
  - Limit of Vegetation Management
  - Limit of Disturbance
  - Plant Community Study Area
  - Facility Site



Sheet 2 of 10



Prepared October 30, 2024  
Basemap: USDA NAIP "2022 New York 60cm" orthoimagery map service

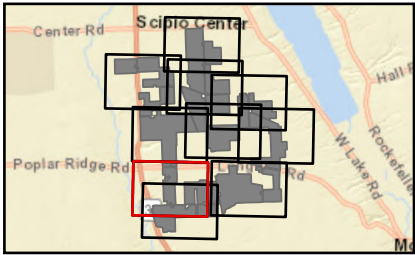


**Agricola Wind Project**

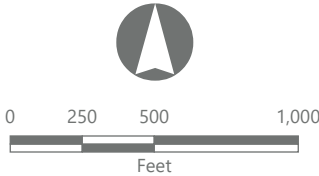
Towns of Venice and Scipio,  
Cayuga County, New York

**Article VIII Permit Application  
Matter No. 23-00064**

- Ecological Community
- Developed/disturbed
  - Cropland/Field Crops
  - Cropland/Row Crops
  - Pastureland
  - Beech-maple mesic forest
  - Maple-basswood rich mesic forest
  - Successional northern hardwoods
  - Successional old field
  - Successional shrubland
  - Stream
  - Wetland
- Facility Components
- Wind Turbine
  - Access Road
  - Underground Collection Line
  - Laydown Yard
  - Temporary Turning Improvement
  - Limit of Impervious Surface
  - Limit of Vegetation Management
  - Limit of Disturbance
  - Plant Community Study Area
  - Facility Site



Sheet 3 of 10



Prepared October 30, 2024  
Basemap: USDA NAIP "2022 New York 60cm" orthoimagery map service



Agricola Wind Project

Towns of Venice and Scipio,  
Cayuga County, New York

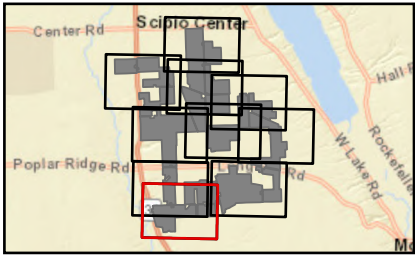
Article VIII Permit Application  
Matter No. 23-00064

Ecological Community

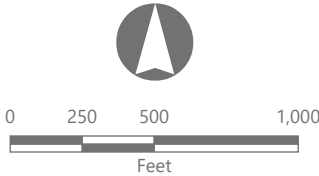
- Developed/disturbed
- Cropland/Field Crops
- Cropland/Row Crops
- Pastureland
- Beech-maple mesic forest
- Maple-basswood rich mesic forest
- Successional northern hardwoods
- Successional old field
- Successional shrubland
- Stream
- Wetland

Facility Components

- Wind Turbine
- Access Road
- Underground Collection Line
- Laydown Yard
- Temporary Turning Improvement
- Limit of Impervious Surface
- Limit of Vegetation Management
- Limit of Disturbance
- Plant Community Study Area
- Facility Site



Sheet 4 of 10



Prepared October 30, 2024  
Basemap: USDA NAIP "2022 New York 60cm" orthoimagery map service

Agricola Wind Project

Towns of Venice and Scipio,  
Cayuga County, New York

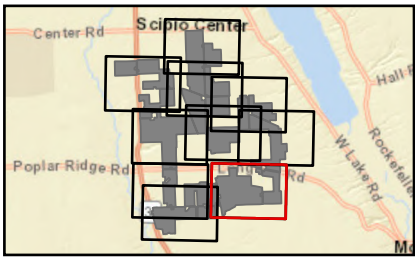
Article VIII Permit Application  
Matter No. 23-00064

Ecological Community

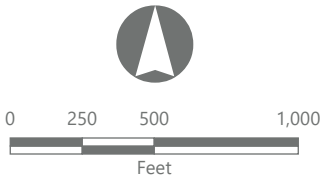
- Developed/disturbed
- Cropland/Field Crops
- Cropland/Row Crops
- Pastureland
- Beech-maple mesic forest
- Maple-basswood rich mesic forest
- Successional northern hardwoods
- Successional old field
- Successional shrubland
- Stream
- Wetland

Facility Components

- Wind Turbine
- ADLS Tower
- MET Tower
- Access Road
- Underground Collection Line
- Laydown Yard
- Temporary Turning Improvement
- Limit of Impervious Surface
- Limit of Vegetation Management
- Limit of Disturbance
- Plant Community Study Area
- Facility Site

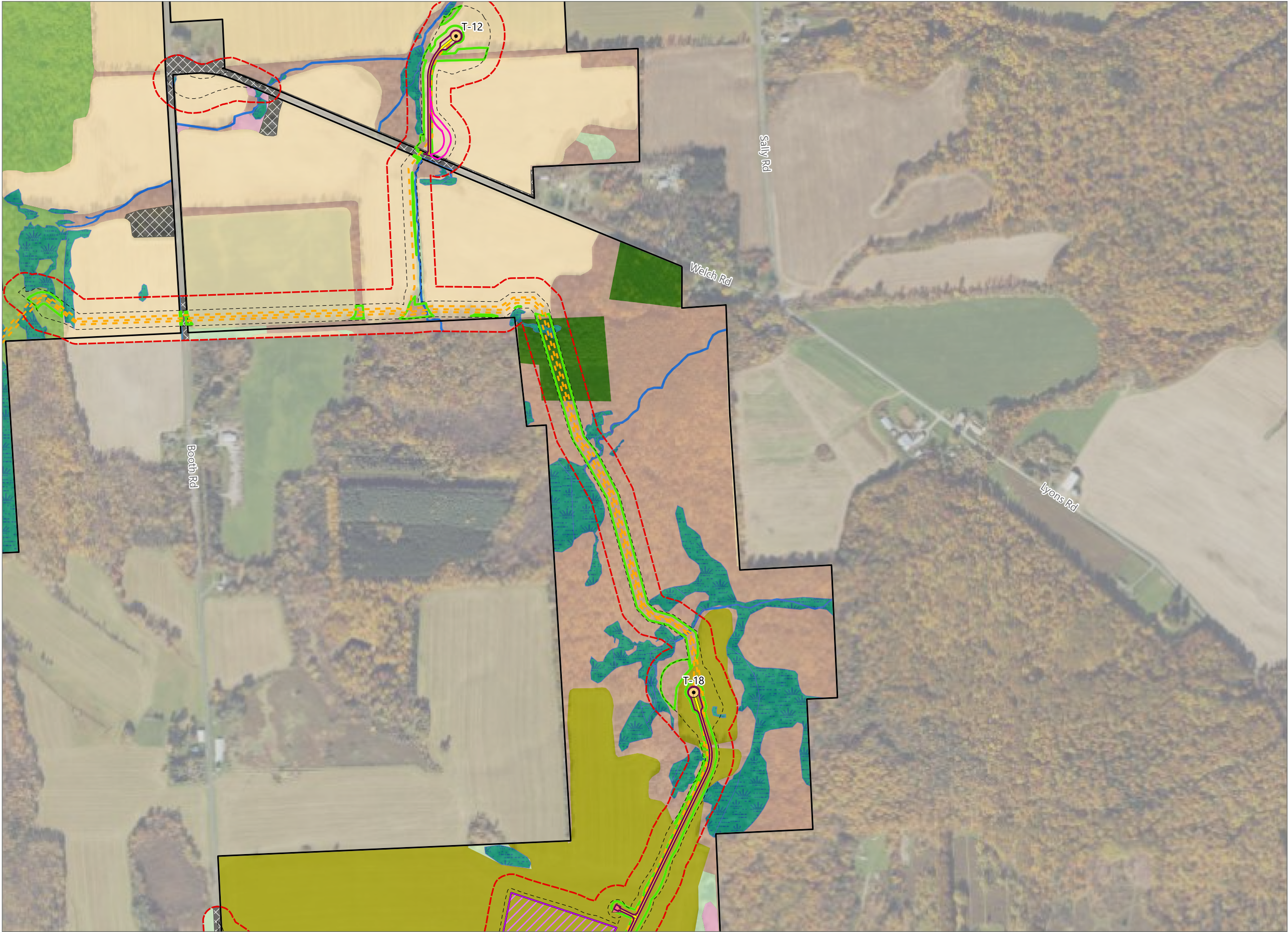


Sheet 5 of 10



Prepared October 30, 2024  
Basemap: USDA NAIP "2022 New York 60cm" orthomagey map service

Figure 11-1. Plant Communities

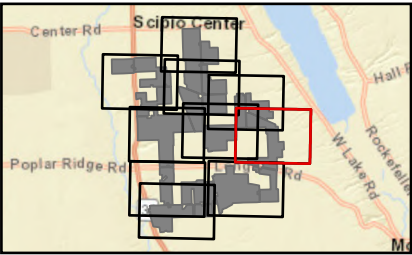


**Agricola Wind Project**

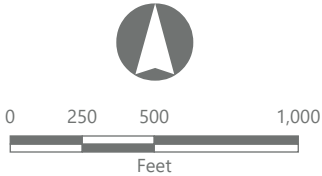
Towns of Venice and Scipio,  
Cayuga County, New York

**Article VIII Permit Application  
Matter No. 23-00064**

- Ecological Community
- Developed/disturbed
  - Cropland/Field Crops
  - Cropland/Row Crops
  - Beech-maple mesic forest
  - Spruce/fir plantation
  - Successional northern hardwoods
  - Successional old field
  - Successional shrubland
  - Stream
  - Wetland
- Facility Components
- Wind Turbine
  - MET Tower
  - Access Road
  - Underground Collection Line
  - Laydown Yard
  - Temporary Turning Improvement
  - Limit of Impervious Surface
  - Limit of Vegetation Management
  - Limit of Disturbance
  - Plant Community Study Area
  - Facility Site



Sheet 6 of 10



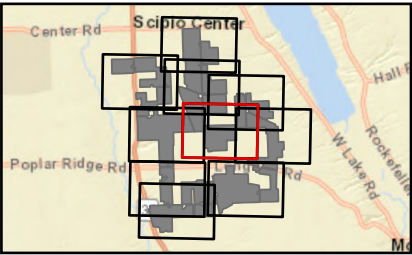
Prepared October 30, 2024  
Basemap: USDA NAIP "2022 New York 60cm" orthoimagery map service

Agricola Wind Project

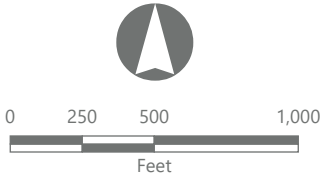
Towns of Venice and Scipio,  
Cayuga County, New York

Article VIII Permit Application  
Matter No. 23-00064

- Ecological Community
- Developed/disturbed
  - Cropland/Field Crops
  - Cropland/Row Crops
  - Beech-maple mesic forest
  - Successional northern hardwoods
  - Successional old field
  - Successional shrubland
  - Stream
  - Wetland
- Facility Components
- Wind Turbine
  - Access Road
  - Underground Collection Line
  - Temporary Turning Improvement
  - Limit of Impervious Surface
  - Limit of Vegetation Management
  - Limit of Disturbance
  - Plant Community Study Area
  - Facility Site



Sheet 7 of 10



Prepared October 30, 2024  
Basemap: USDA NAIP "2022 New York 60cm" orthoimagery map service



Agricola Wind Project

Towns of Venice and Scipio,  
Cayuga County, New York

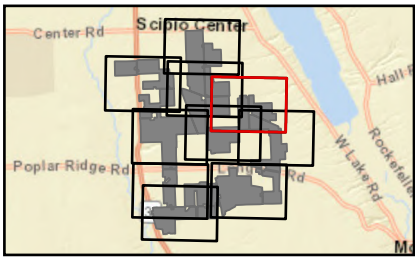
Article VIII Permit Application  
Matter No. 23-00064

Ecological Community

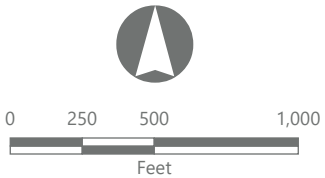
- Developed/disturbed
- Cropland/Row Crops
- Beech-maple mesic forest
- Spruce/fir plantation
- Successional northern hardwoods
- Successional old field
- Successional shrubland
- Stream
- Wetland

Facility Components

- Wind Turbine
- Access Road
- Underground Collection Line
- Temporary Turning Improvement
- Limit of Impervious Surface
- Limit of Vegetation Management
- Limit of Disturbance
- Plant Community Study Area
- Facility Site



Sheet 8 of 10



Prepared October 30, 2024  
Basemap: USDA NAIP "2022 New York 60cm" orthoimagery map service

Agricola Wind Project

Towns of Venice and Scipio,  
Cayuga County, New York

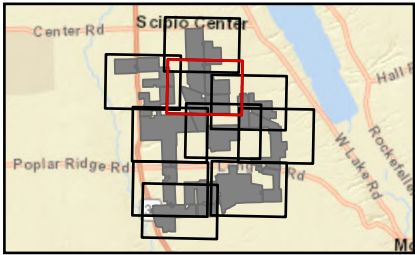
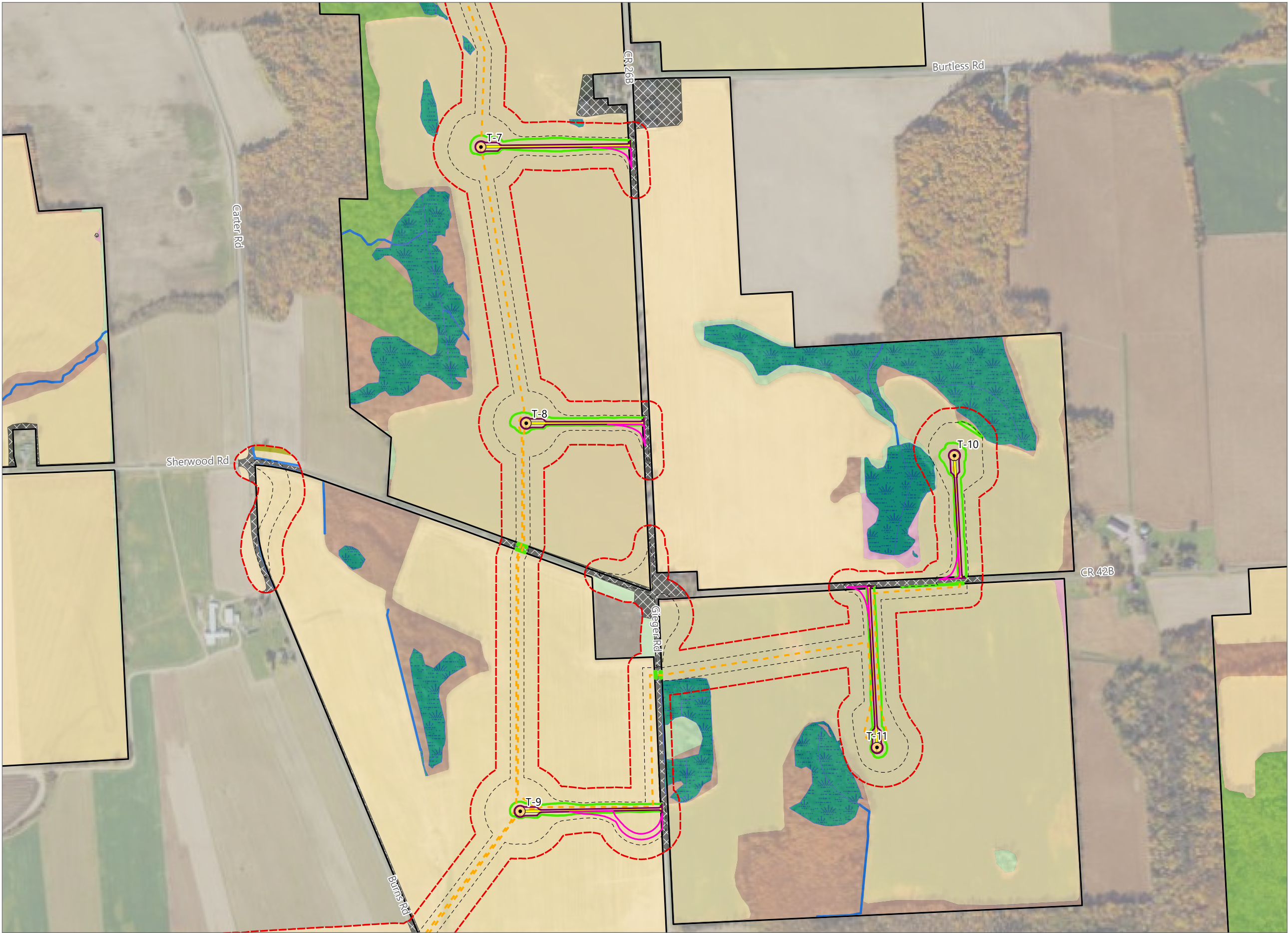
Article VIII Permit Application  
Matter No. 23-00064

Ecological Community

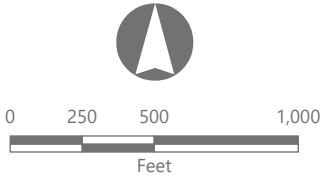
- Developed/disturbed
- Cropland/Field Crops
- Cropland/Row Crops
- Beech-maple mesic forest
- Successional northern hardwoods
- Successional old field
- Successional shrubland
- Stream
- Wetland

Facility Components

- Wind Turbine
- Access Road
- Underground Collection Line
- Temporary Turning Improvement
- Limit of Impervious Surface
- Limit of Vegetation Management
- Limit of Disturbance
- Plant Community Study Area
- Facility Site



Sheet 9 of 10



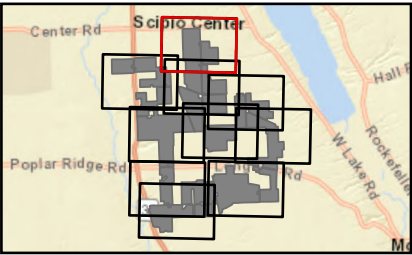
Prepared October 30, 2024  
Basemap: USDA NAIP "2022 New York 60cm" orthoimagery map service

Agricola Wind Project

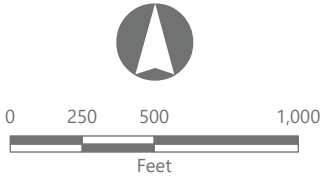
Towns of Venice and Scipio,  
Cayuga County, New York

Article VIII Permit Application  
Matter No. 23-00064

- Ecological Community
- Developed/disturbed
  - Cropland/Row Crops
  - Pastureland
  - Beech-maple mesic forest
  - Successional northern hardwoods
  - Successional old field
  - Successional shrubland
  - Stream
  - Wetland
- Facility Components
- Wind Turbine
  - Access Road
  - Underground Collection Line
  - Temporary Turning Improvement
  - Limit of Impervious Surface
  - Limit of Vegetation Management
  - Limit of Disturbance
  - Plant Community Study Area
  - Facility Site



Sheet 10 of 10



Prepared October 30, 2024  
Basemap: USDA NAIP "2022 New York 60cm" orthoimagery map service