

Agricola Wind Project
Towns of Scipio and Venice, Cayuga County, New York

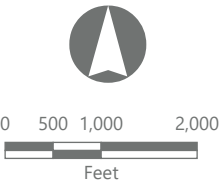
Visual Impact Assessment

- Viewpoint Location
 - Simulation Viewpoint
 - Wind Turbine
 - Potential MET Tower Visibility
 - MET Tower 4-Mile Study Area
 - Potential ADLS Tower Visibility
 - ADLS 4-Mile Study Area
 - Gen-Tie Line
 - Collection Substation
 - POI Switchyard
 - Potential Interconnection Facility Visibility
 - Interconnection Facility 4-Mile Study Area
 - Facility Site
 - 5-Mile Study Area
- Visually Sensitive Resources
- Other Designated Scenic Resource
 - Snowmobile Trail
 - State, US, or Interstate Highway
 - S/NRHP-Eligible Resource
 - Named Lake, Pond, or Reservoir
 - Local Park or Recreation Area
 - Hamlet

		1	
2		3	4
5		6	7
8		9	10
11		12	13

*Sheets shown in grey in the sheet locator inset are not included herein as they do not overlap the ancillary facility study areas.

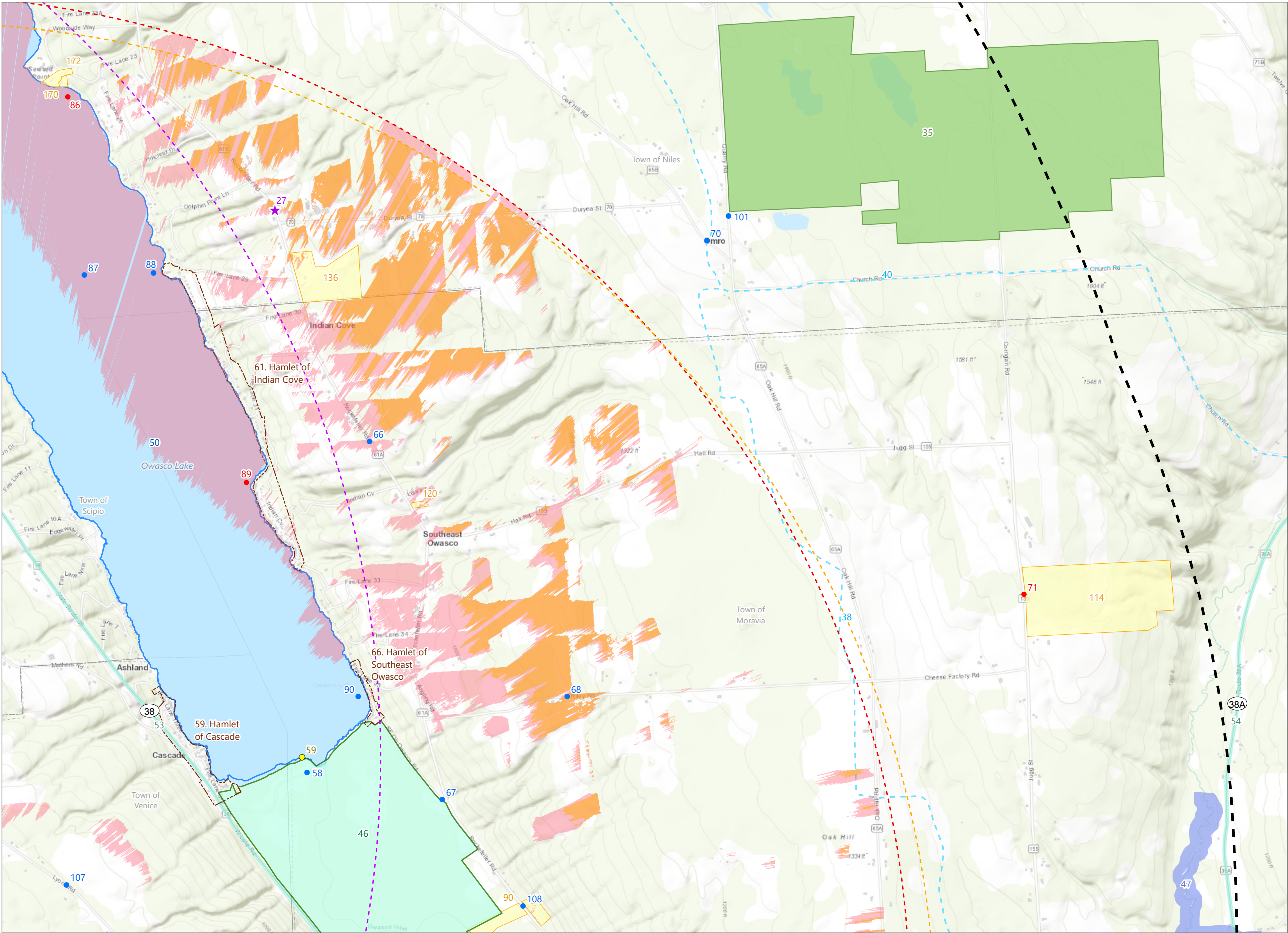
Sheet 6 of 13



Prepared November 1, 2024
Basemap: Esri "World Topo Map" map service
Potential ancillary facility viewshed visibility is based on the screening effects of topography, vegetation, and structures as represented in NYSITS (2018 and 2020) and FEMA (2012 and 2019) lidar datasets and the maximum height of each ancillary facility.

Agricola Wind Project
Towns of Scipio and Venice, Cayuga
County, New York

Visual Impact Assessment

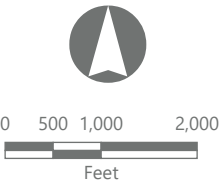


- Viewpoint Location
 - Simulation Viewpoint
 - Wireframe Viewpoint
 - Potential MET Tower Visibility
 - MET Tower 4-Mile Study Area
 - Potential ADLS Tower Visibility
 - ADLS 4-Mile Study Area
 - Interconnection Facility 4-Mile Study Area
 - 5-Mile Study Area
- Visually Sensitive Resources
- Other Designated Scenic Resource
 - Snowmobile Trail
 - State, US, or Interstate Highway
 - S/NRHP-Eligible Resource
 - State Forest
 - Public Fishing Rights Easement
 - Named Lake, Pond, or Reservoir
 - Publicly Accessible Conservation Land
 - Hamlet

		1	
2		3	4
5		6	7
8		9	10
11		12	13

*Sheets shown in grey in the sheet locator inset are not included herein as they do not overlap the ancillary facility study areas.

Sheet 7 of 13

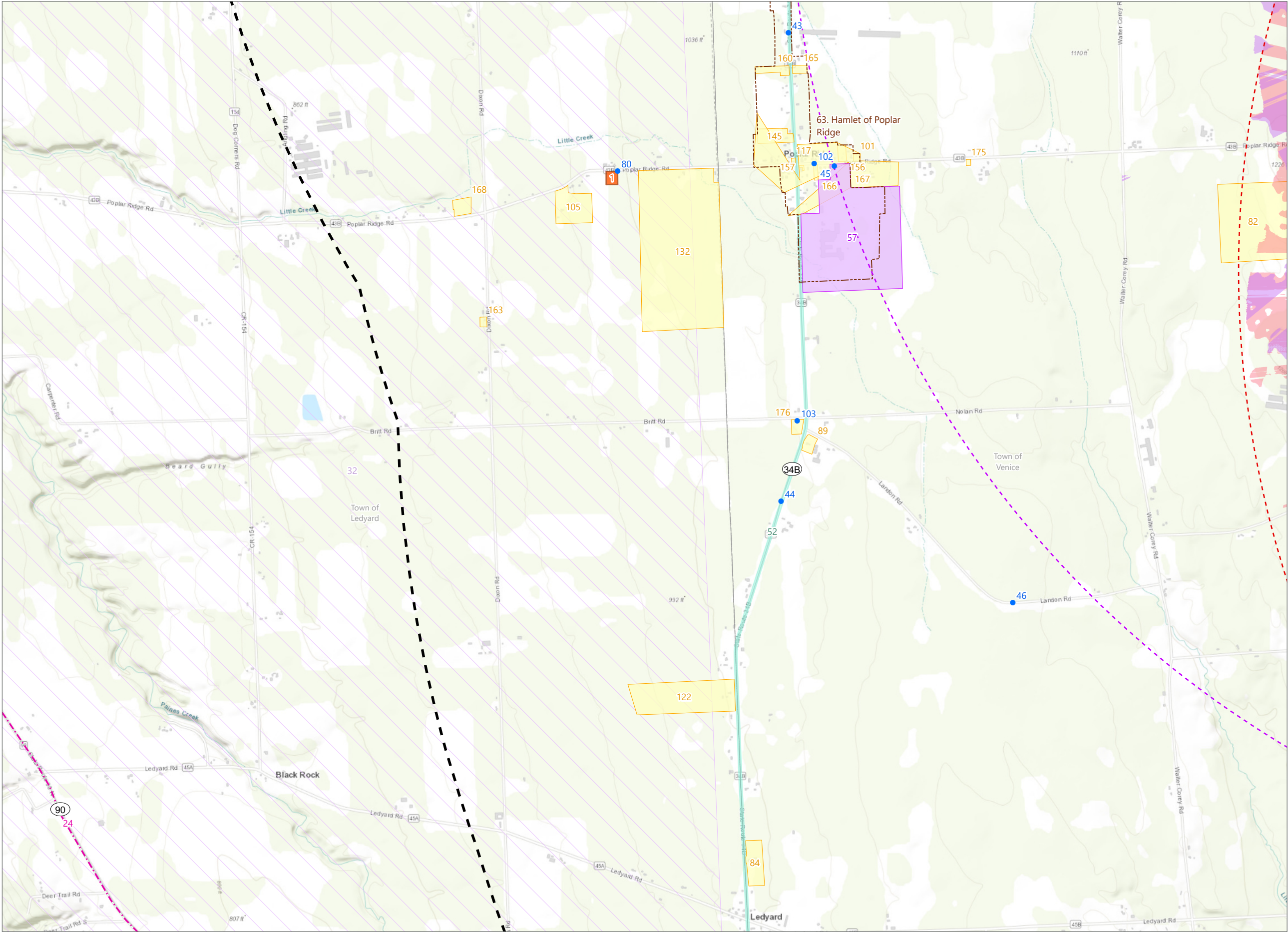


Prepared November 1, 2024
Basemap: Esri "World Topo Map" map service

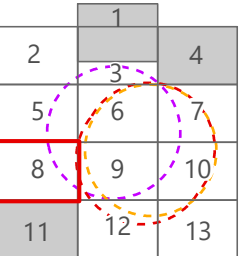
Potential ancillary facility viewshed visibility is based on the screening effects of topography, vegetation, and structures as represented in NYSITS (2018 and 2020) and FEMA (2012 and 2019) lidar datasets and the maximum height of each ancillary facility.

Agricola Wind Project
Towns of Scipio and Venice, Cayuga
County, New York

Visual Impact Assessment

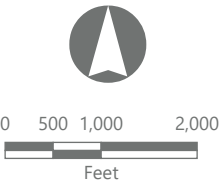


- Viewpoint Location
- Potential MET Tower Visibility
- MET Tower 4-Mile Study Area
- Potential Interconnection Facility Visibility
- Interconnection Facility 4-Mile Study Area
- 5-Mile Study Area
- Visually Sensitive Resources
 - State Scenic Byway
 - State, US, or Interstate Highway
 - National Historic Landmark
 - S/NRHP-Eligible Resource
 - School
 - Hamlet
 - Heritage Area



*Sheets shown in grey in the sheet locator inset are not included herein as they do not overlap the ancillary facility study areas.

Sheet 8 of 13

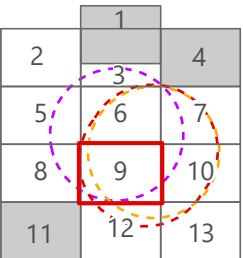


Prepared November 1, 2024
Basemap: Esri "World Topo Map" map service
Potential ancillary facility viewshed visibility is based on the screening effects of topography, vegetation, and structures as represented in NYSITS (2018 and 2020) and FEMA (2012 and 2019) lidar datasets and the maximum height of each ancillary facility.

Agricola Wind Project
Towns of Scipio and Venice, Cayuga County, New York

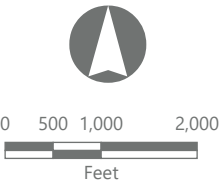
Visual Impact Assessment

- Viewpoint Location
- Simulation Viewpoint
- Wireframe Viewpoint
- Wind Turbine
- MET Tower
- Potential MET Tower Visibility
- MET Tower 4-Mile Study Area
- ADLS Tower
- Potential ADLS Tower Visibility
- ADLS 4-Mile Study Area
- Potential Interconnection Facility Visibility
- Interconnection Facility 4-Mile Study Area
- Facility Site
- 5-Mile Study Area
- Visually Sensitive Resources
 - Snowmobile Trail
 - State, US, or Interstate Highway
 - S/NRHP-Eligible Resource
 - Resource Identified by Stakeholders
 - Hamlet



*Sheets shown in grey in the sheet locator inset are not included herein as they do not overlap the ancillary facility study areas.

Sheet 9 of 13



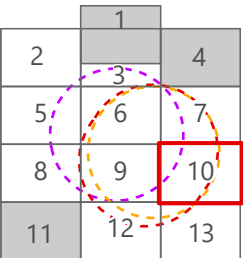
Prepared November 1, 2024
Basemap: Esri "World Topo Map" map service

Potential ancillary facility viewshed visibility is based on the screening effects of topography, vegetation, and structures as represented in NYSITS (2018 and 2020) and FEMA (2012 and 2019) lidar datasets and the maximum height of each ancillary facility.

Agricola Wind Project
Towns of Scipio and Venice, Cayuga
County, New York

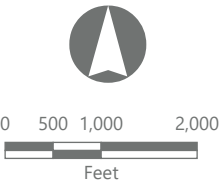
Visual Impact Assessment

- Viewpoint Location
- Wireframe Viewpoint
- Potential MET Tower Visibility
- MET Tower 4-Mile Study Area
- Potential ADLS Tower Visibility
- ADLS 4-Mile Study Area
- Interconnection Facility 4-Mile Study Area
- 5-Mile Study Area
- Visually Sensitive Resources
 - Snowmobile Trail
 - State, US, or Interstate Highway
 - S/NRHP-Listed Resource
 - S/NRHP-Eligible Resource
 - State Park
 - Wildlife Management Area
 - State Fishing or Waterway Access Site
 - Public Fishing Rights Easement
 - Local Park or Recreation Area
 - School
 - Publicly Accessible Conservation Land
 - Village
 - Hamlet



*Sheets shown in grey in the sheet locator inset are not included herein as they do not overlap the ancillary facility study areas.

Sheet 10 of 13



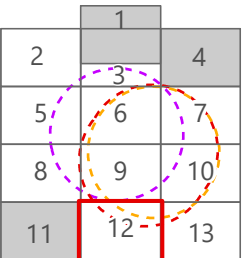
Prepared November 1, 2024
Basemap: Esri "World Topo Map" map service

Potential ancillary facility viewshed visibility is based on the screening effects of topography, vegetation, and structures as represented in NYSITS (2018 and 2020) and FEMA (2012 and 2019) lidar datasets and the maximum height of each ancillary facility.

Towns of Scipio and Venice, Cayuga County, New York

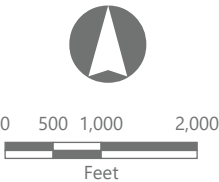
Visually Sensitive Resources

- Viewpoint Location
 - Simulation Viewpoint
 - Potential MET Tower Visibility
 - MET Tower 4-Mile Study Area
 - ADLS 4-Mile Study Area
 - 5-Mile Study Area
- Visually Sensitive Resources
- State Scenic Byway
 - Snowmobile Trail
 - State, US, or Interstate Highway
 - S/NRHP-Eligible Resource
 - Hamlet
 - Heritage Area



*Sheets shown in grey in the sheet locator inset are not included herein as they do not overlap the ancillary facility study areas.

Sheet 12 of 13

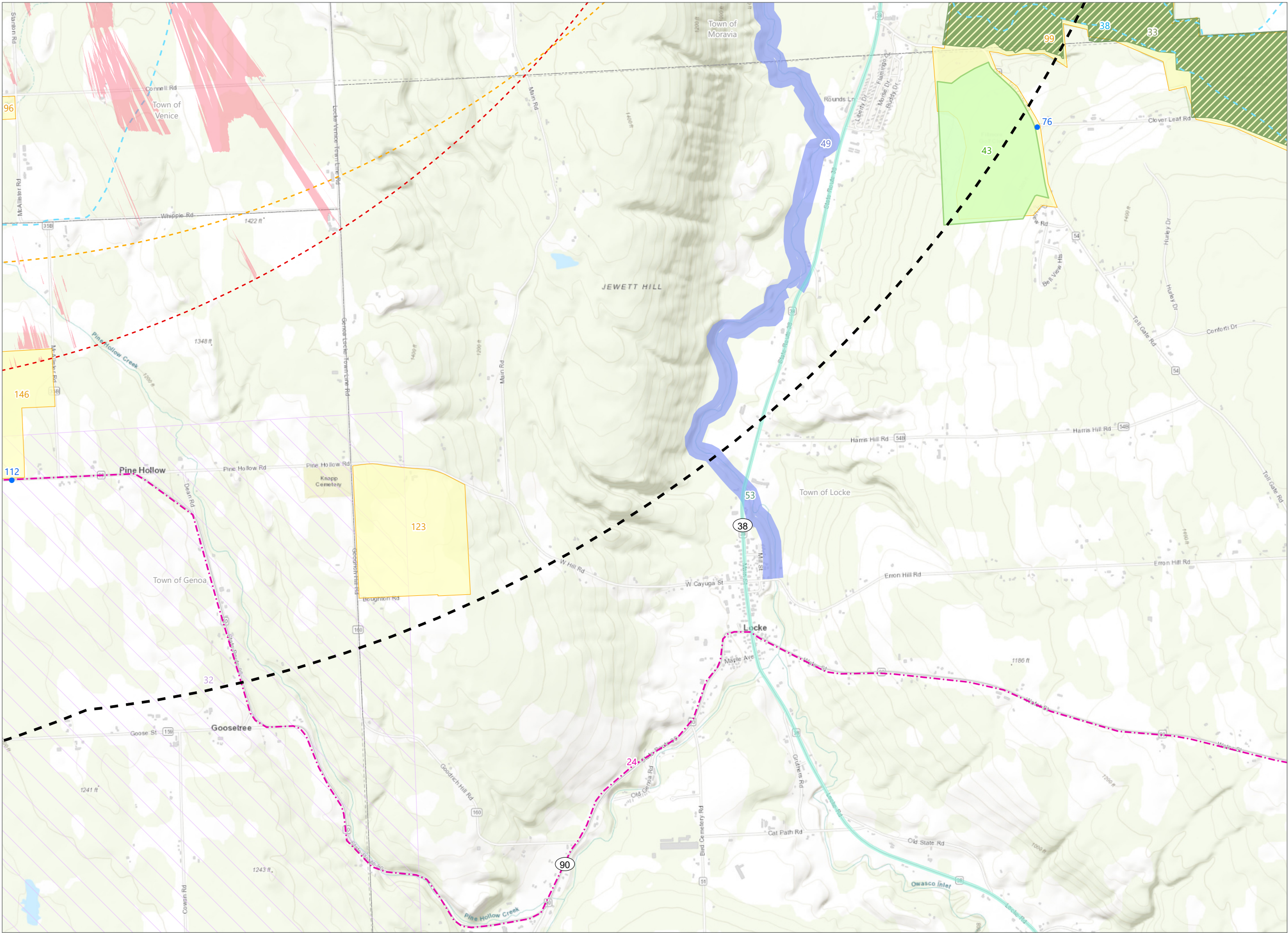


Prepared November 1, 2024
Basemap: Esri "World Topo Map" map service

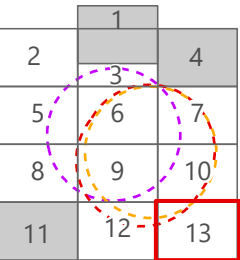
Potential ancillary facility viewshed visibility is based on the screening effects of topography, vegetation, and structures as represented in NYSITS (2018 and 2020) and FEMA (2012 and 2019) lidar datasets and the maximum height of each ancillary facility.

Agricola Wind Project
Towns of Scipio and Venice, Cayuga
County, New York

Visual Impact Assessment

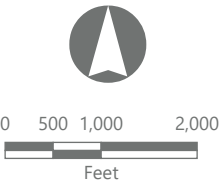


- Viewpoint Location
- Potential MET Tower Visibility
- MET Tower 4-Mile Study Area
- ADLS 4-Mile Study Area
- 5-Mile Study Area
- State Scenic Byway
- Snowmobile Trail
- State, US, or Interstate Highway
- S/NRHP-Eligible Resource
- State Park
- Public Fishing Rights Easement
- Local Park or Recreation Area
- Heritage Area



*Sheets shown in grey in the sheet locator inset are not included herein as they do not overlap the ancillary facility study areas.

Sheet 13 of 13

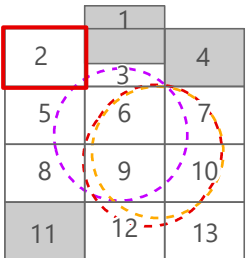


Prepared November 1, 2024
Basemap: Esri "World Topo Map" map service
Potential ancillary facility viewshed visibility is based on the screening effects of topography, vegetation, and structures as represented in NYSITS (2018 and 2020) and FEMA (2012 and 2019) lidar datasets and the maximum height of each ancillary facility.

Agricola Wind Project
Towns of Scipio and Venice, Cayuga
County, New York

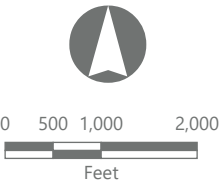
Visual Impact Assessment

- Viewpoint Location
- Interconnection Facility
- 4-Mile Study Area
- 5-Mile Study Area
- Landscape Similarity Zone
 - Agricultural/Rural Residential
 - Forest



*Sheets shown in grey in the sheet locator inset are not included herein as they do not overlap the ancillary facility study areas.

Sheet 2 of 13

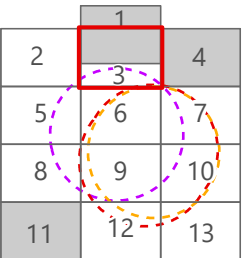


Prepared November 1, 2024
Basemap: Esri "World Topo Map" map service
Potential ancillary facility viewshed visibility is based on the screening effects of topography, vegetation, and structures as represented in NYSITS (2018 and 2020) and FEMA (2012 and 2019) lidar datasets and the maximum height of each ancillary facility.

Agricola Wind Project
Towns of Scipio and Venice, Cayuga
County, New York

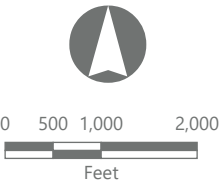
Visual Impact Assessment

- Viewpoint Location
- Simulation Viewpoint
- Potential MET Tower Visibility
- MET Tower 4-Mile Study Area
- ADLS 4-Mile Study Area
- Interconnection Facility 4-Mile Study Area
- 5-Mile Study Area
- Landscape Similarity Zone
- Agricultural/Rural Residential
- Forest
- Owasco Lake



*Sheets shown in grey in the sheet locator inset are not included herein as they do not overlap the ancillary facility study areas.

Sheet 3 of 13



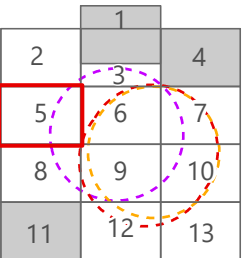
Prepared November 1, 2024
Basemap: Esri "World Topo Map" map service

Potential ancillary facility viewshed visibility is based on the screening effects of topography, vegetation, and structures as represented in NYSITS (2018 and 2020) and FEMA (2012 and 2019) lidar datasets and the maximum height of each ancillary facility.

Agricola Wind Project
Towns of Scipio and Venice, Cayuga
County, New York

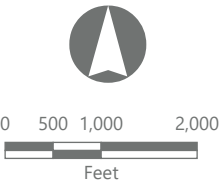
Visual Impact Assessment

- Viewpoint Location
- Simulation Viewpoint
- Wireframe Viewpoint
- Potential MET Tower Visibility
- MET Tower 4-Mile Study Area
- Potential Interconnection Facility Visibility
- Interconnection Facility 4-Mile Study Area
- 5-Mile Study Area
- Landscape Similarity Zone
 - Agricultural/Rural Residential
 - Forest
 - Hamlet



*Sheets shown in grey in the sheet locator inset are not included herein as they do not overlap the ancillary facility study areas.

Sheet 5 of 13



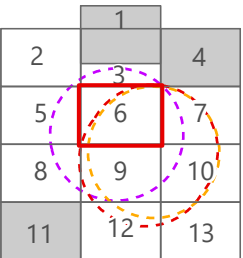
Prepared November 1, 2024
Basemap: Esri "World Topo Map" map service

Potential ancillary facility viewshed visibility is based on the screening effects of topography, vegetation, and structures as represented in NYSITS (2018 and 2020) and FEMA (2012 and 2019) lidar datasets and the maximum height of each ancillary facility.

Agricola Wind Project
Towns of Scipio and Venice, Cayuga
County, New York

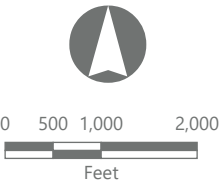
Visual Impact Assessment

- Viewpoint Location
- Simulation Viewpoint
- Wind Turbine
- Potential MET Tower Visibility
- MET Tower 4-Mile Study Area
- Potential ADLS Tower Visibility
- ADLS 4-Mile Study Area
- Gen-Tie Line
- Collection Substation
- POI Switchyard
- Potential Interconnection Facility Visibility
- Interconnection Facility 4-Mile Study Area
- Facility Site
- 5-Mile Study Area
- Landscape Similarity Zone
 - Agricultural/Rural Residential
 - Forest
 - Hamlet
 - Owasco Lake



*Sheets shown in grey in the sheet locator inset are not included herein as they do not overlap the ancillary facility study areas.

Sheet 6 of 13



Prepared November 1, 2024
Basemap: Esri "World Topo Map" map service
Potential ancillary facility viewshed visibility is based on the screening effects of topography, vegetation, and structures as represented in NYSITS (2018 and 2020) and FEMA (2012 and 2019) lidar datasets and the maximum height of each ancillary facility.