

REVISED WIREFRAME RENDERING



0 1 in 2 in
This scale is designed to insure the simulation images are printed at the intended size.

VIEWPOINT 26
Tuscarora Road

Hoffman Falls Wind Project
Towns of Eaton, Fenner, Nelson, and Smithfield, Madison County, New York

EDR

Note: Printed at actual size, the resulting simulation image is 15 inches wide by 10 inches high. At this size and focal length, the simulation should be viewed from a distance 21 inches from the eye of the viewer.

EXISTING VIEW



0 1 in 2 in
This scale is designed to insure the simulation images are printed at the intended size.

VIEWPOINT 26
Tuscarora Road

Hoffman Falls Wind Project
Towns of Eaton, Fenner, Nelson, and Smithfield, Madison County, New York

EDR

Note: Printed at actual size, the existing view image is 15 inches wide by 10 inches high. At this size and focal length, the existing view image should be viewed from a distance 21 inches from the eye of the viewer.

WIREFRAME RENDERING



Note: Printed at actual size, the resulting wireframe rendering image is 15 inches wide by 10 inches high. At this size and focal length, the simulation should be viewed from a distance 21 inches from the eye of the viewer.

0 1 in 2 in
This scale is designed to insure the simulation images are printed at the intended size.

VIEWPOINT 26
Tuscarora Road

Hoffman Falls Wind Project
Towns of Eaton, Fenner, Nelson, and Smithfield, Madison County, New York

EDR

REVISED WIREFRAME RENDERING



0 1 in 2 in
This scale is designed to insure the simulation images are printed at the intended size.

VIEWPOINT 26
Tuscarora Road

Hoffman Falls Wind Project
Towns of Eaton, Fenner, Nelson, and Smithfield, Madison County, New York

EDR

Note: Printed at actual size, the resulting wireframe rendering image is 15 inches wide by 10 inches high. At this size and focal length, the simulation should be viewed from a distance 21 inches from the eye of the viewer.

EXISTING VIEW - PANORAMA





REVISED WIREFRAME RENDERING - PANORAMA





Note: The image above is a panorama photograph taken from Chenango Street in the Town of Eaton panning clockwise from west (left) to northeast (right). The green rectangle represents the extent of the simulated photograph.

VIEWPOINT 33
Chenango Street

VIEWPOINT INFORMATION

Location: Chenango Street
Town: Eaton
County: Madison
Latitude: 42.89851° N
Longitude: 75.64173° W

LOCATION INFORMATION

Distance Zone Represented in View: Middle Ground
Viewer Distance*: 2.2 miles
Landscape Similarity Zone: Village
Viewer/User Group(s): Local Residents, Through-Travelers

Visually Sensitive Resource(s): US Route 20, Scenic Route 20, Bicentennial Architectural Trail, Village of Morrisville, Old Madison County Courthouse, Morrisville Engine House, Bicknell Hall, a two-story brick Colonial Revival-style academic building, Methodist Church, Morrisville Village Historic District, Brooks Hall, SUNY College of Agriculture and Technology at Morrisville Historic District, State University of New York College of Agriculture and Technology at Morrisville

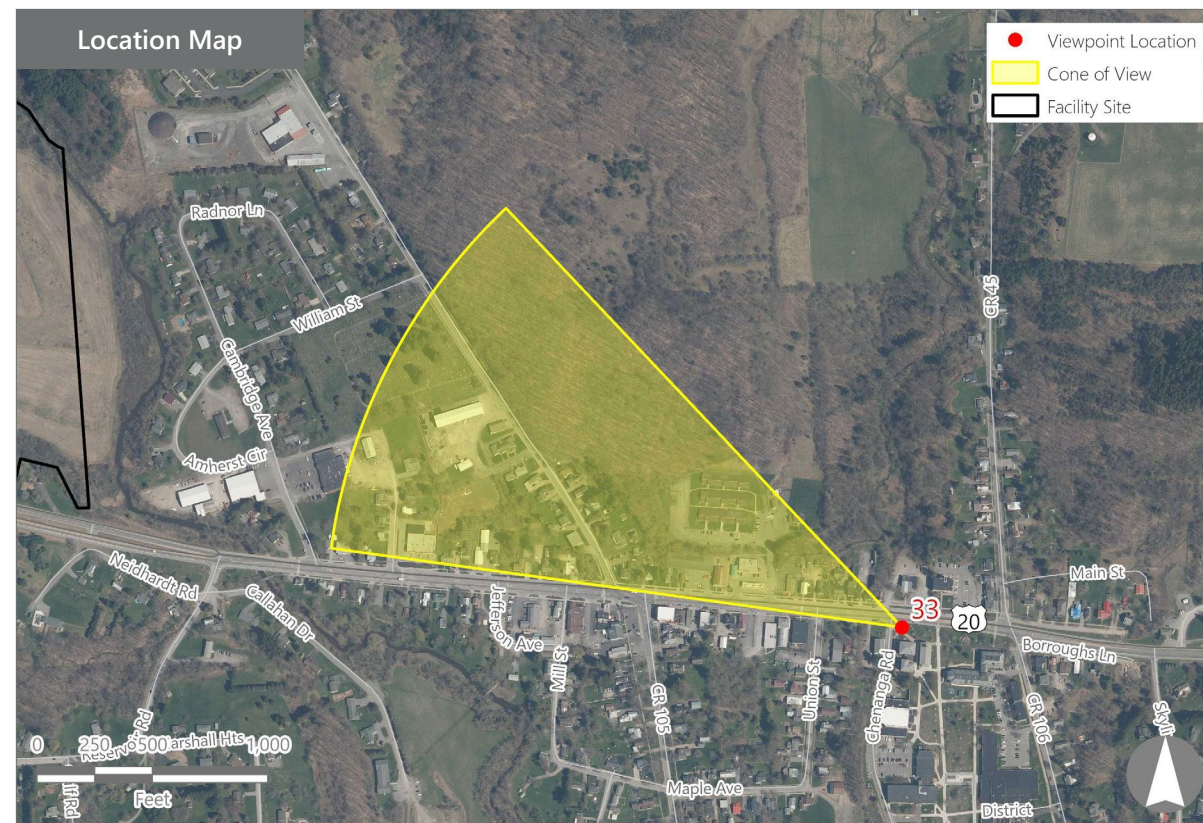
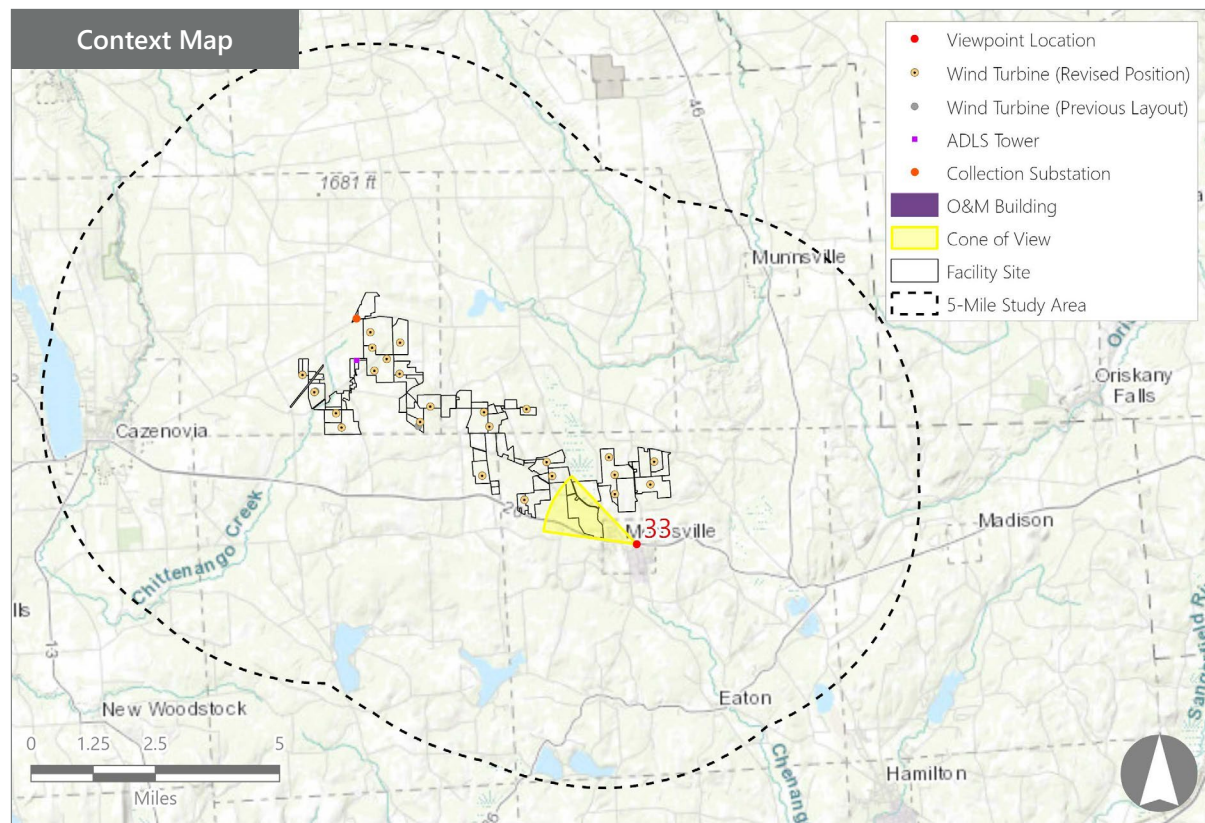
PHOTOGRAPH INFORMATION

Date: August 31, 2023
Time: 1:34 PM
Camera: Canon EOS 5D Mark IV
Resolution: 24 Megapixels
Lens Focal Length (35mm equivalent): 50 mm
Camera Elevation: 1,3922 feet
Field of View: 39 degrees
Direction of View: West-northwest
Printed Size: 10" x 15"
Viewing Distance:** 21"

NOTES

*Distance as measured from the viewpoint to the closest wind turbine generator within the simulated photograph's field of view

**The simulation is at the correct perspective when printed on an 11 inch by 17 inch sheet at full scale, and viewed approximately 21 inches from the eye of the viewer.



Hoffman Falls Wind Project

Towns of Eaton, Fenner, Nelson, and Smithfield, Madison County, New York

Visual Impact Assessment Addendum
Appendix 8-A

EXISTING VIEW



0 1 in 2 in
 This scale is designed to insure the simulation images are printed at the intended size.

VIEWPOINT 33
 Chenango Street

Hoffman Falls Wind Project
 Towns of Eaton, Fenner, Nelson, and Smithfield, Madison County, New York

EDR

Note: Printed at actual size, the existing view image is 15 inches wide by 10 inches high. At this size and focal length, the existing view image should be viewed from a distance 21 inches from the eye of the viewer.

WIREFRAME RENDERING



0 1 in 2 in
This scale is designed to insure the simulation images are printed at the intended size.

VIEWPOINT 33
Chenango Street

Hoffman Falls Wind Project
Towns of Eaton, Fenner, Nelson, and Smithfield, Madison County, New York

EDR

Sheet 61 of 148

Note: Printed at actual size, the resulting wireframe rendering image is 15 inches wide by 10 inches high. At this size and focal length, the simulation should be viewed from a distance 21 inches from the eye of the viewer.

REVISED WIREFRAME RENDERING



0 1 in 2 in
This scale is designed to insure the simulation images are printed at the intended size.

VIEWPOINT 33
Chenango Street

Hoffman Falls Wind Project
Towns of Eaton, Fenner, Nelson, and Smithfield, Madison County, New York

EDR

Note: Printed at actual size, the resulting wireframe rendering image is 15 inches wide by 10 inches high. At this size and focal length, the simulation should be viewed from a distance 21 inches from the eye of the viewer.



Note: The image above is a panorama photograph taken from Madison Road in the Town of Eaton panning clockwise from west (left) to northeast (right). The green rectangle represents the extent of the simulated photograph.

VIEWPOINT 36
Madison Road

VIEWPOINT INFORMATION

Location: Madison Road
Town: Eaton
County: Madison
Latitude: 42.89218° N
Longitude: 75.64359° W

LOCATION INFORMATION

Distance Zone Represented in View: Middle ground
Viewer Distance*: 1.5 miles
Landscape Similarity Zone: Village
Viewer/User Group(s): Local Residents, Tourists/
 Recreational Users

Visually Sensitive Resource(s): State University of New York College of Agriculture and Technology at Morrisville, Edward R Andrews Elementary School, Village of Morrisville

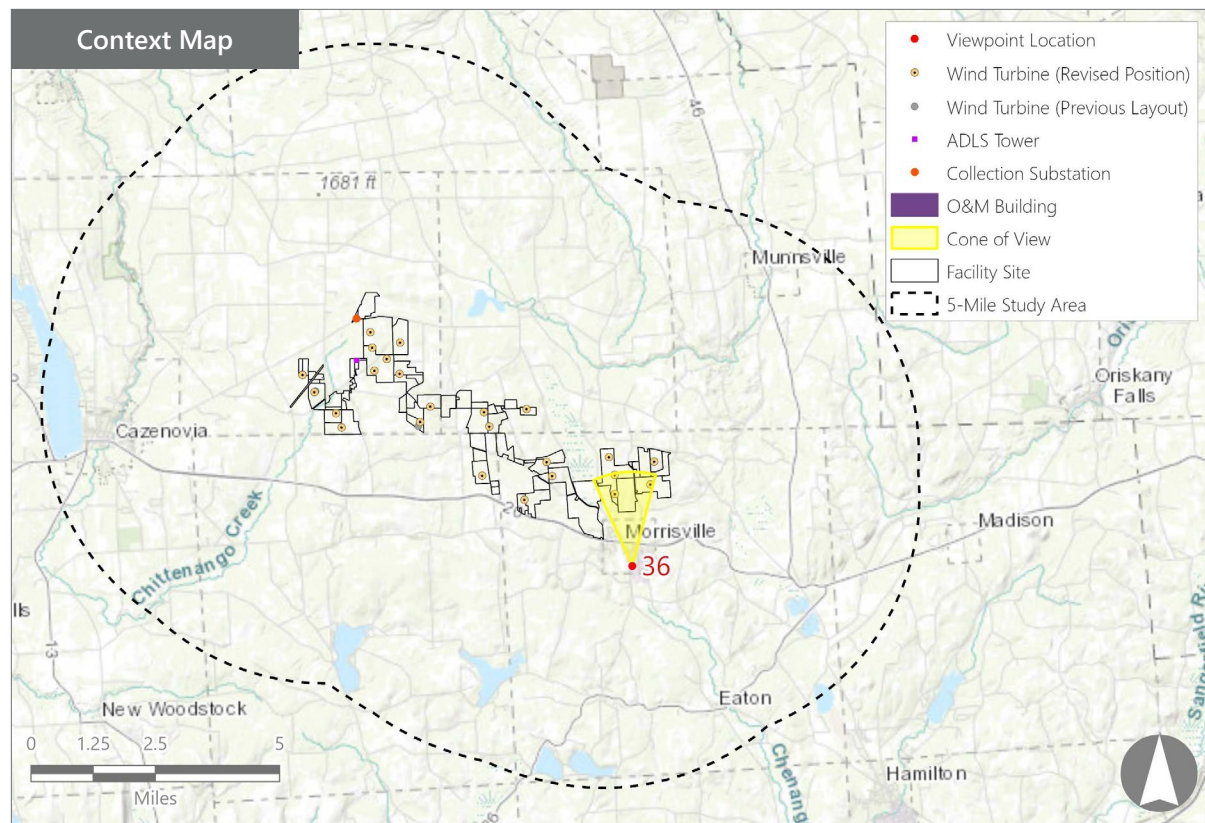
PHOTOGRAPH INFORMATION

Date: August 31, 2023
Time: 2:00 PM
Camera: Canon EOS 5D Mark IV
Resolution: 24 Megapixels
Lens Focal Length (35mm equivalent): 50 mm
Camera Elevation: 1,298 feet
Field of View: 39 degrees
Direction of View: North
Printed Size: 10" x 15"
Viewing Distance:** 21"

NOTES

*Distance as measured from the viewpoint to the closest wind turbine generator within the simulated photograph's field of view

**The simulation is at the correct perspective when printed on an 11 inch by 17 inch sheet at full scale, and viewed approximately 21 inches from the eye of the viewer.



Hoffman Falls Wind Project

Towns of Eaton, Fenner, Nelson, and Smithfield, Madison County, New York

Visual Impact Assessment Addendum
Appendix 8-A

Viewpoint Sensitivity¹:

Scenic Quality:

- Low
- Moderate
- High

Viewer Exposure

Frequency:

- Rare
- Occasional
- Regular/Repeated

Duration of View:

- Short/Brief/Fleeting
- Moderate
- Long

¹Viewpoint Sensitivity information is gathered from rating panel results. Scenic Quality is an average based on Low = 1, Moderate = 2, High = 3. Viewer Exposure reflects all those selected by the review panel.

Contrast Rating Scores²:

Component	Score		Contrast Rating
	Install		
Landform	2.2		Moderate
Vegetation	1.7		Minimal/Moderate
Land Use	1.7		Minimal/Moderate
Water	N/A		N/A
Sky	2.3		Moderate/Appreciable
Viewer Activity	2.7		Moderate/Appreciable
AVERAGE	2.1		Moderate

² Contrast Rating Scale: 0.0 - 0.2 (Insignificant), 0.3 - 0.7 (Insignificant/Minimal), 0.8 - 1.2 (Minimal), 1.3 - 1.7 (Minimal/Moderate), 1.8 - 2.2 (Moderate), 2.3 - 2.7 (Moderate/Appreciable), 2.8 - 3.2 (Appreciable) 3.3 - 3.7 (Appreciable/Strong), 3.8 - 4.0 (Strong).

Contrast Rating - Lowest and Highest Scores:

Component	Post - Install	
	Score	
	Low	High
Landform	1.5	3.0
Vegetation	1.0	2.0
Land Use	1.0	2.0
Water	NA	NA
Sky	2.0	2.5
Viewer Activity	2.0	3.0

Existing View



Proposed View (Post Installation)



Existing View

Viewpoint 36 is located on Madison Road in the Town of Eaton, approximately 1.5 miles from the nearest proposed wind turbine that would be visible in the selected photo's field of view. This viewpoint occurs adjacent to a complex of athletic fields on the SUNY Morrisville campus in the village LSZ. It is representative of open views that could be available to local residents, students/student athletes, and visitors to the college. The existing view to the north looks across an open grass playing field that extends from the immediate foreground to the middle ground. The middle ground is characterized by a mix of trees, mowed lawns, and campus structures including a parking lot, basketball court, running track, and various historic buildings, that serve as focal points in the view. The background is defined by a wooded hill that rises behind the campus structures and blocks views of more distant landscape features. The fields, paved surfaces, and low buildings create strong horizontal lines in the view, but vertical elements, including light stanchions, flagpoles, and chimneys, are also present (although only the light stanchions break the horizon line). The view has an open, well-organized composition with moderate scenic quality.

Proposed View

With the proposed Project in place, a cluster of three wind turbines extend above the hilltop behind the large brick campus building in the center of the view, and another two wind turbines are visible above the trees on the right. The turbines are screened to varying degrees by the forested hill in the background, but the nacelles, rotors, and portions of the towers are visible on all. The turbines are novel new focal points that draw the viewers' eye away from the field and campus buildings. However, they are far enough away that their scale contrast is not overwhelming, and their vertical line is consistent with several of the existing built features in the view. It is unlikely that the turbines would distract athletes engaged in highly active uses, but may minimally distract less active spectators at the playing fields, and their visibility will decrease as one moves north into the SUNY Morrisville campus proper, due to increased screening by campus buildings and trees and the forested hill to the north. The turbines are also consistent with turbines from other existing wind farms that are visible along Route 20 both east and west of the Village of Morrisville.

Hoffman Falls Wind Project

Towns of Eaton, Fenner, Nelson, and Smithfield, Madison County, New York

EXISTING VIEW



Note: Printed at actual size, the existing view image is 15 inches wide by 10 inches high. At this size and focal length, the existing view image should be viewed from a distance 21 inches from the eye of the viewer.

PHOTOSIMULATION



Hoffman Falls Wind Project

Towns of Eaton, Fenner, Nelson, and Smithfield, Madison County, New York

VIEWPOINT 36
Madison Road

0 1 in 2 in
This scale is designed to insure the simulation images are printed at the intended size.

Note: Printed at actual size, the resulting simulation image is 15 inches wide by 10 inches high. At this size and focal length, the simulation should be viewed from a distance 21 inches from the eye of the viewer.



Note: The image above is a panorama photograph taken from US Route 20 in the Town of Eaton panning clockwise from northwest (left) to northeast (right). The green rectangle represents the extent of the simulated photograph.

VIEWPOINT 40
US Route 20

VIEWPOINT INFORMATION

Location: US Route 20
Town: Eaton
County: Madison
Latitude: 42.90269° N
Longitude: 75.66670° W

LOCATION INFORMATION

Distance Zone Represented in View: Middle ground
Viewer Distance*: 1.2 miles
Landscape Similarity Zone: Agricultural/Rural Residential

Viewer/User Group(s): Local Residents, Through-Travelers

Visually Sensitive Resource(s): Scenic Route 20, US Route 20

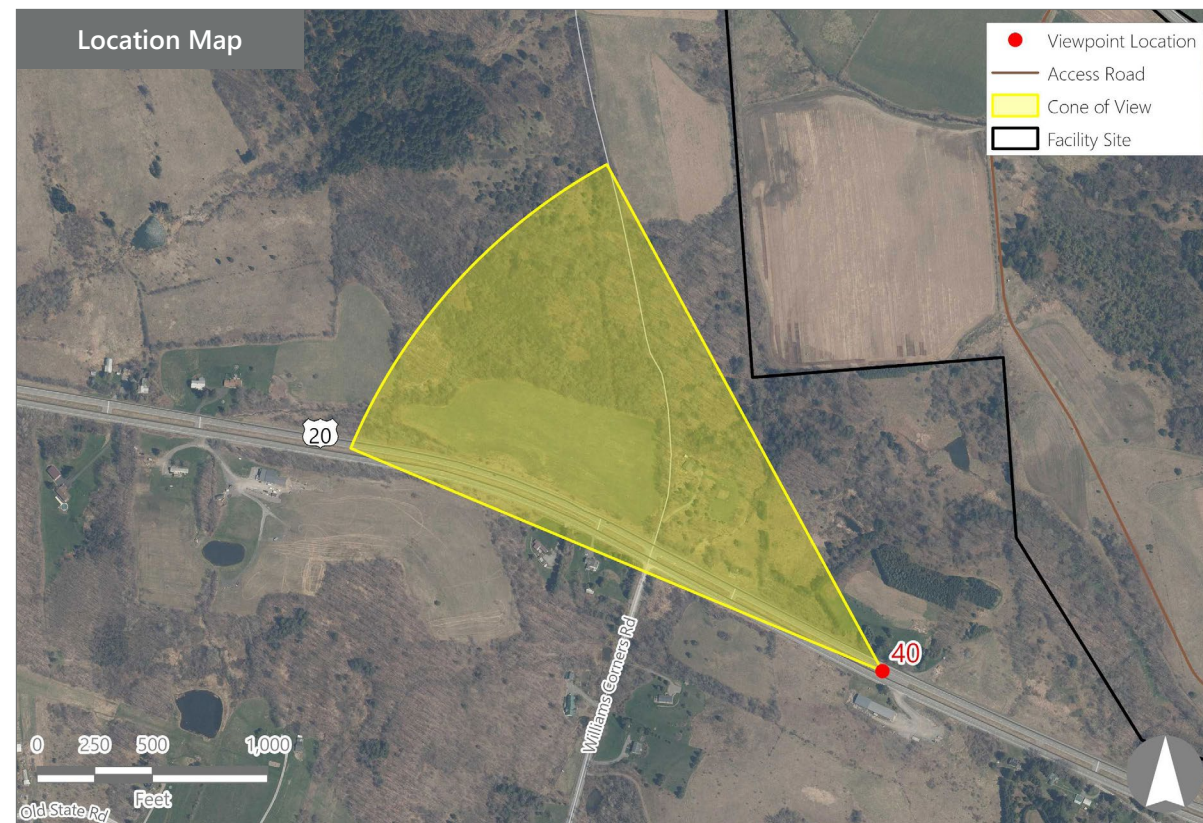
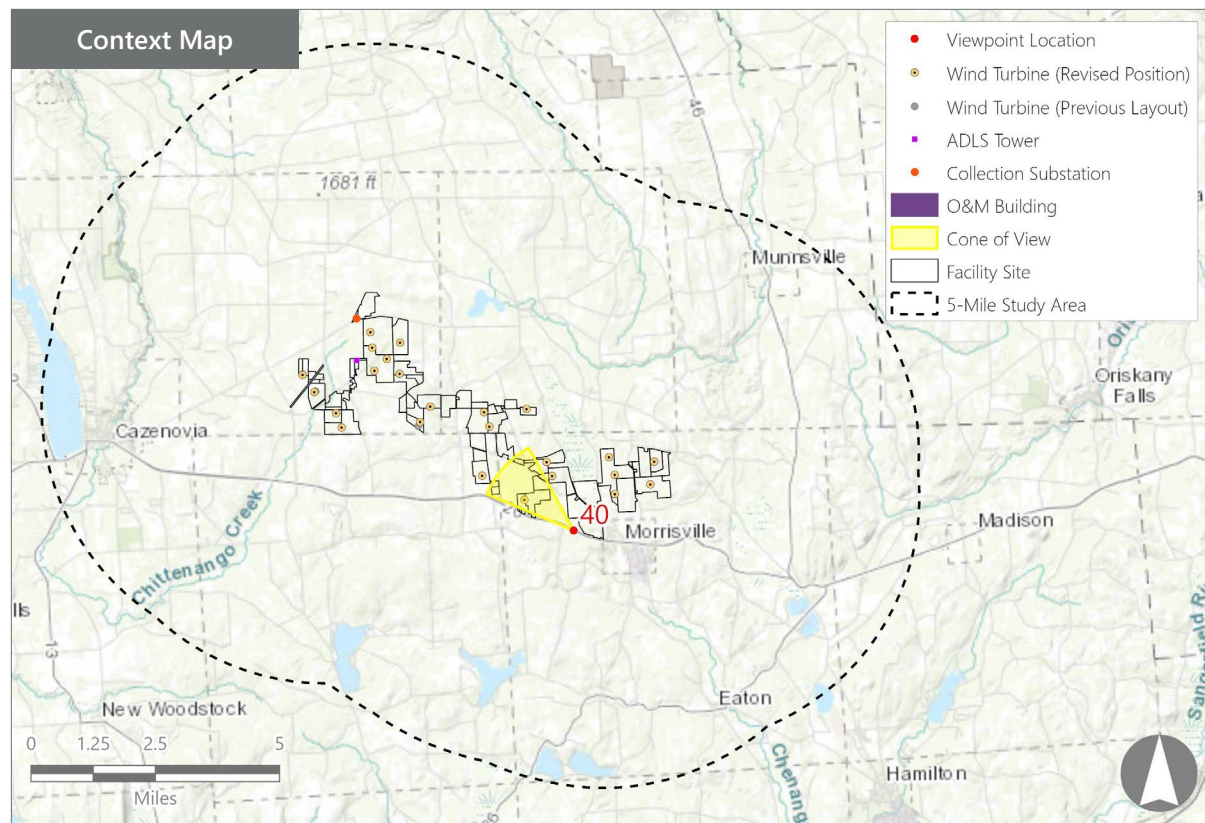
PHOTOGRAPH INFORMATION

Date: August 31, 2023
Time: 2:20 PM
Camera: Canon EOS 5D Mark IV
Resolution: 24 Megapixels
Lens Focal Length (35mm equivalent): 50 mm
Camera Elevation: 1,466 feet
Field of View: 39 degrees
Direction of View: Northwest
Printed Size: 10" x 15"
Viewing Distance:** 21"

NOTES

*Distance as measured from the viewpoint to the closest wind turbine generator within the simulated photograph's field of view

**The simulation is at the correct perspective when printed on an 11 inch by 17 inch sheet at full scale, and viewed approximately 21 inches from the eye of the viewer.



Hoffman Falls Wind Project

Towns of Eaton, Fenner, Nelson, and Smithfield, Madison County, New York

Visual Impact Assessment Addendum
Appendix 8-A

Viewpoint Sensitivity¹:

Scenic Quality:

- Low
- Moderate
- High

Viewer Exposure

Frequency:

- Rare
- Occasional
- Regular/Repeated

Duration of View:

- Short/Brief/Fleeting
- Moderate
- Long

¹Viewpoint Sensitivity information is gathered from rating panel results. Scenic Quality is an average based on Low = 1, Moderate = 2, High = 3. Viewer Exposure reflects all those selected by the review panel.

Contrast Rating Scores²:

Component	Score		Contrast Rating
	Install		
Landform	1.5		Minimal/Moderate
Vegetation	1.5		Minimal/Moderate
Land Use	1.2		Minimal
Water	N/A		N/A
Sky	2.0		Moderate
Viewer Activity	0.8		Minimal
AVERAGE	1.4		Minimal/Moderate

² Contrast Rating Scale: 0.0 - 0.2 (Insignificant), 0.3 - 0.7 (Insignificant/Minimal), 0.8 - 1.2 (Minimal), 1.3 - 1.7 (Minimal/Moderate), 1.8 - 2.2 (Moderate), 2.3 - 2.7 (Moderate/Appreciable), 2.8 - 3.2 (Appreciable) 3.3 - 3.7 (Appreciable/Strong), 3.8 - 4.0 (Strong).

Contrast Rating - Lowest and Highest Scores:

Component	Post - Install	
	Score	
	Low	High
Landform	0.5	2.0
Vegetation	1.0	2.0
Land Use	1.0	1.5
Water	NA	NA
Sky	1.5	2.5
Viewer Activity	0.5	1.0

Existing View



Proposed View (Post Installation)



Existing View

Viewpoint 40 is located on U.S. Route 20 in the Town of Eaton, approximately 1.2 miles from the nearest proposed wind turbine that would be visible in the selected photo's field of view. This viewpoint occurs in the Agricultural/Rural Residential LSZ and is representative of views available to local residents and through travelers. The existing view to the northwest from this location features the divided lanes of Route 20 extending from the immediate foreground to the background. The road angles away from the viewer and dips into a middle ground valley before ascending a wooded hill in the background and disappearing behind a bank of trees on the left. Other than the highway and small roadside markers, the view lacks developed features and is dominated by rolling wooded hills and swaths of open grass on the road median and shoulders. The hills and tall trees along the roadside limit the availability of long-distance views at this location. The view is characteristic of a lightly used rural parkway and is considered to have moderate scenic quality.

Proposed View

With the proposed Project in place, two wind turbines extend high into the sky above the wooded hill to the right of the highway in the background. The turbines' vertical line is compatible with the roadside markers, but their scale, texture, and form contrast with the existing vegetation and landform is notable. The turbines introduce large, novel forms into a primarily undeveloped rural landscape and become focal points in this view. The movement of their rotors will further draw viewer attention, but not to the point where they would create an unsafe distraction to drivers on Route 20. Their white color minimizes contrast with the sky and their presence is consistent with turbines from other existing wind farms that are visible from similar distances along Route 20. The rating panel indicated that the contrast with the existing landscape is moderate.

Hoffman Falls Wind Project

Towns of Eaton, Fenner, Nelson, and Smithfield, Madison County, New York