

Figure 15-6. Mineral Soil Groups

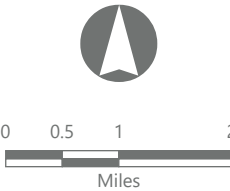


Hoffman Falls Wind

Towns of Eaton, Fenner, Nelson and
Smithfield, Madison County,
New York

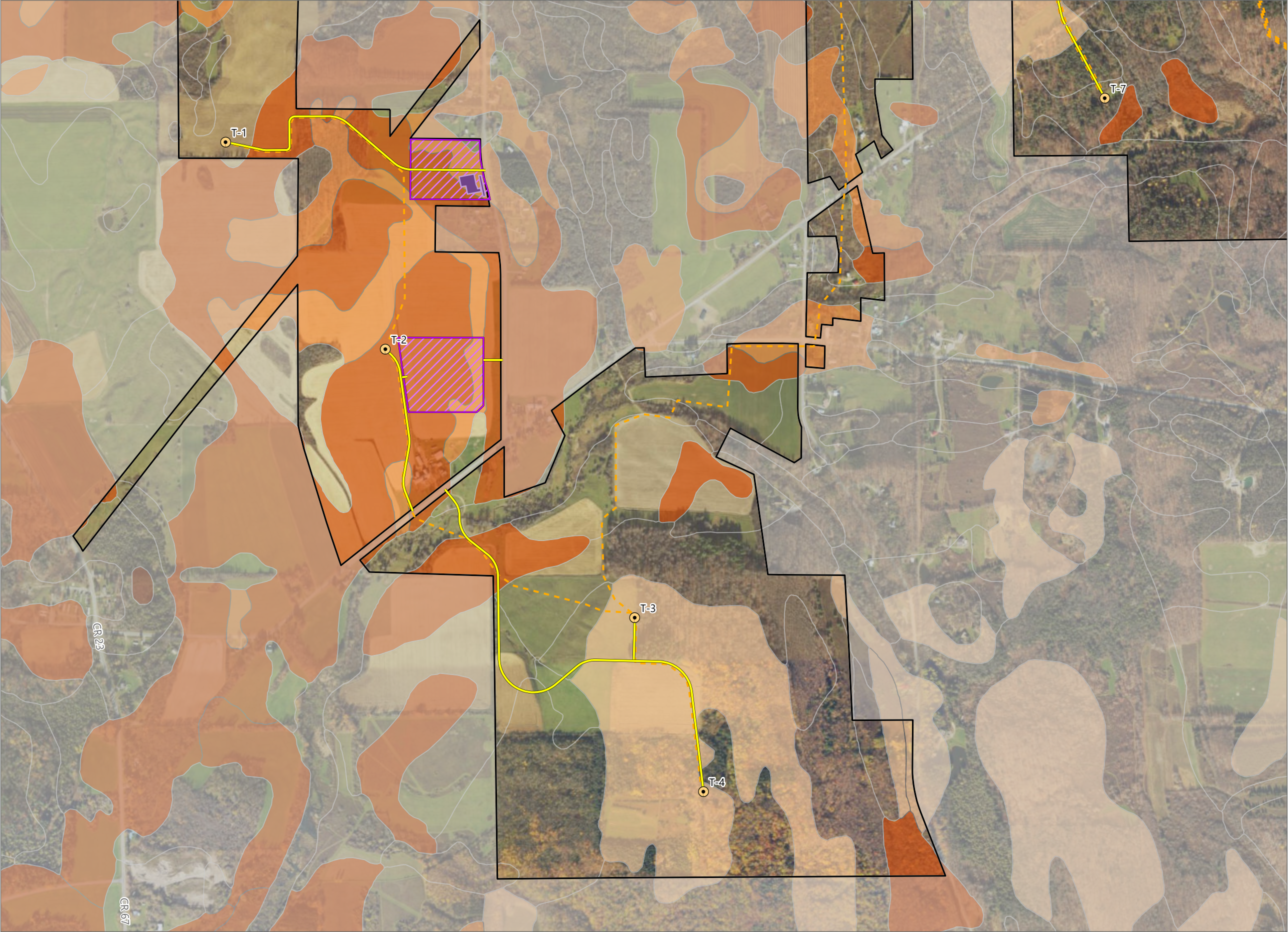
**94-c Permit Application
Matter No. 23-00038**

- Mineral Soil Group
- Group 1
 - Group 2
 - Group 3
 - Group 4
 - Groups 5-10
- Facility Components
- Facility Site
 - 5-Mile Study Area



Prepared February 5, 2024
Basemap: Esri "USGS Topo" map service

Figure 15-6. Mineral Soil Groups



Hoffman Falls Wind

Towns of Eaton, Fenner, Nelson and
Smithfield, Madison County,
New York

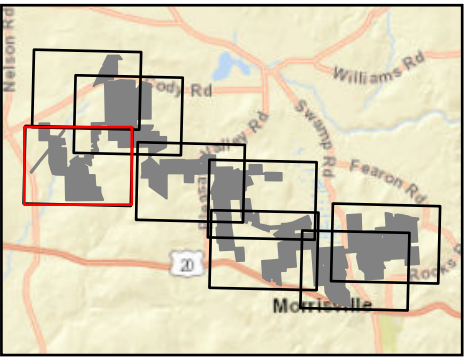
**94-c Permit Application
Matter No. 23-00038**

Mineral Soil Group

- Group 1
- Group 2
- Group 3
- Group 4
- Groups 5-10

Facility Components

- Wind Turbine
- Access Road
- Collection Line
- O&M Building
- Laydown Yard
- Facility Site



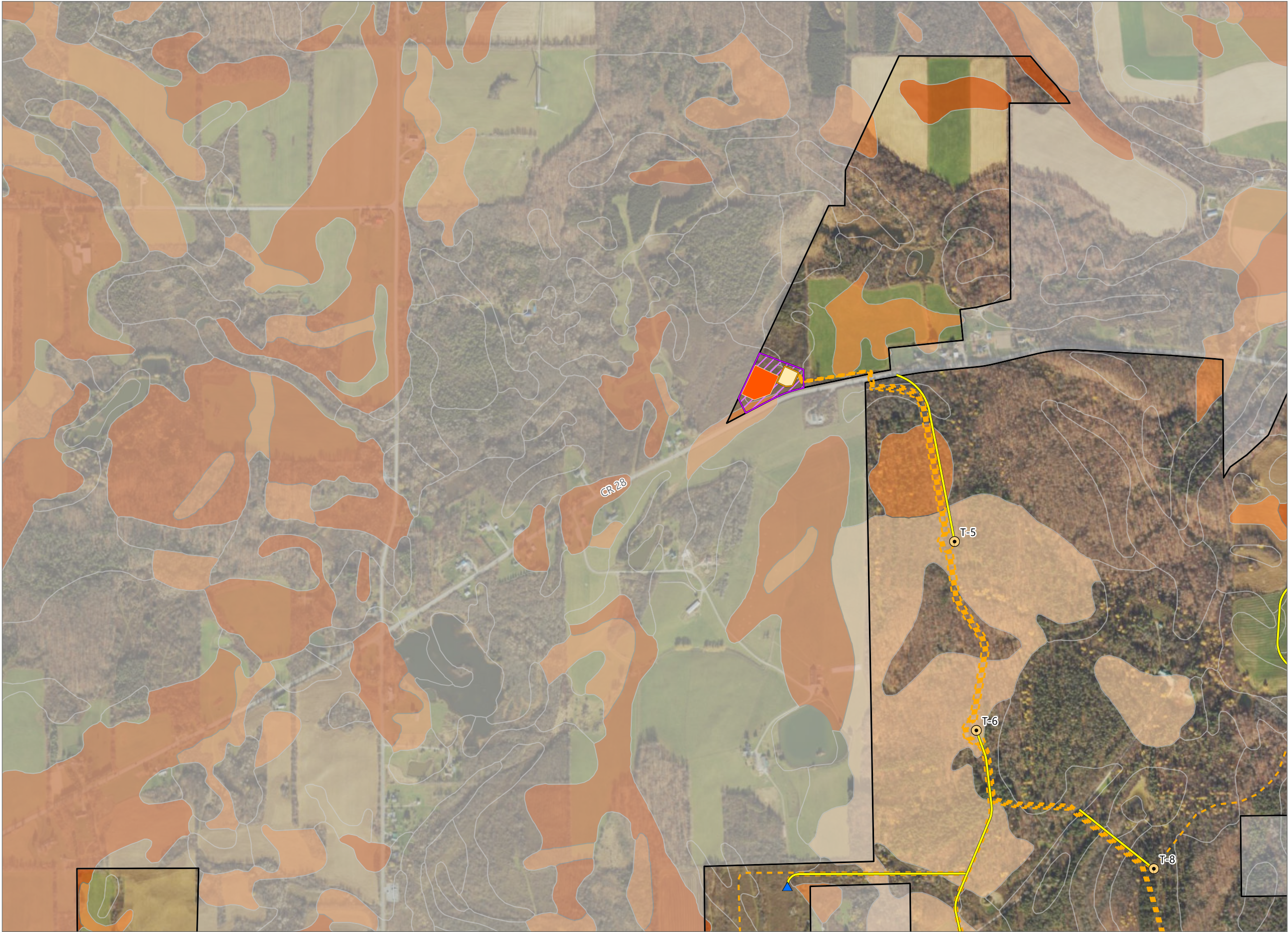
Sheet 1 of 8



0 250 500 1,000
Feet

Prepared February 5, 2024
Basemap: USDA NAIP "2022 New York 60cm" orthoimagery map
service

Figure 15-6. Mineral Soil Groups

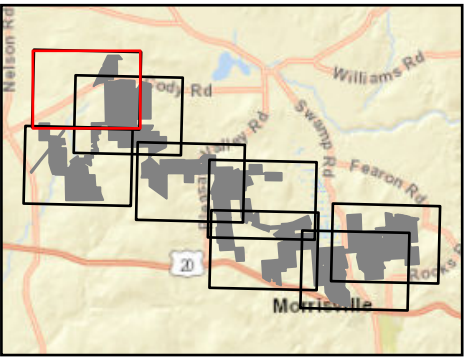


Hoffman Falls Wind

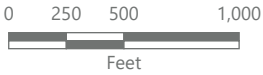
Towns of Eaton, Fenner, Nelson and
Smithfield, Madison County,
New York

**94-c Permit Application
Matter No. 23-00038**

- Mineral Soil Group
- Group 2
 - Group 3
 - Group 4
 - Groups 5-10
- Facility Components
- Wind Turbine
 - ADLS Tower
 - Access Road
 - Collection Line
 - Collection Substation
 - POI Substation
 - Laydown Yard
 - Facility Site

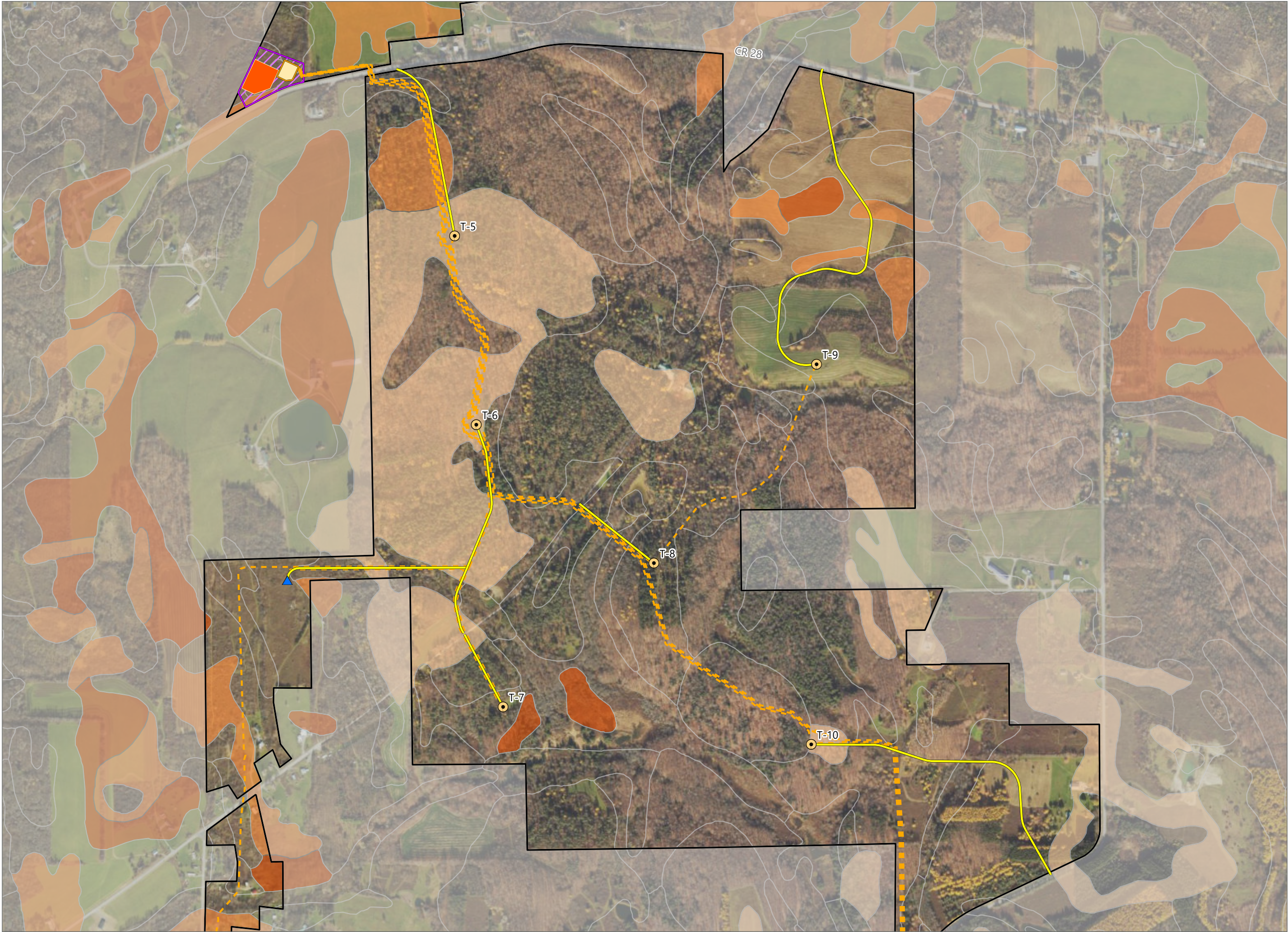


Sheet 2 of 8



Prepared February 5, 2024
Basemap: USDA NAIP "2022 New York 60cm" orthoimagery map
service

Figure 15-6. Mineral Soil Groups

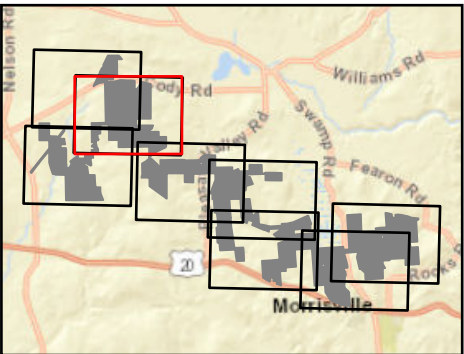


Hoffman Falls Wind

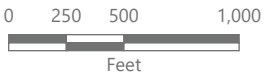
Towns of Eaton, Fenner, Nelson and
Smithfield, Madison County,
New York

**94-c Permit Application
Matter No. 23-00038**

- Mineral Soil Group
- Group 2
 - Group 3
 - Group 4
 - Groups 5-10
- Facility Components
- Wind Turbine
 - ADLS Tower
 - Access Road
 - Collection Line
 - Collection Substation
 - POI Substation
 - Laydown Yard
 - Facility Site



Sheet 3 of 8



Prepared February 5, 2024
Basemap: USDA NAIP "2022 New York 60cm" orthoimagery map
service

Figure 15-6. Mineral Soil Groups



Hoffman Falls Wind

Towns of Eaton, Fenner, Nelson and
Smithfield, Madison County,
New York

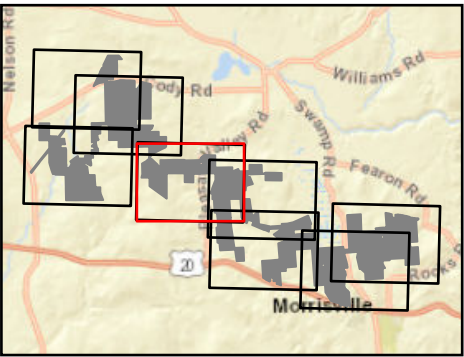
**94-c Permit Application
Matter No. 23-00038**

Mineral Soil Group

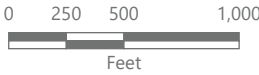
- Group 1
- Group 2
- Group 3
- Group 4
- Groups 5-10

Facility Components

- Wind Turbine
- Permanent MET Tower
- Access Road
- Collection Line
- Facility Site



Sheet 4 of 8



Prepared February 5, 2024
Basemap: USDA NAIP "2022 New York 60cm" orthoimagery map
service

Figure 15-6. Mineral Soil Groups



Hoffman Falls Wind

Towns of Eaton, Fenner, Nelson and
Smithfield, Madison County,
New York

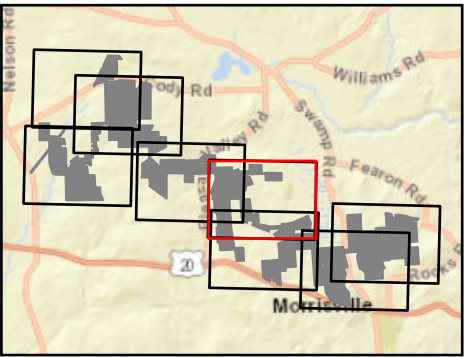
**94-c Permit Application
Matter No. 23-00038**

Mineral Soil Group

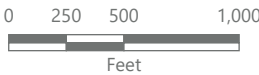
- Group 1
- Group 2
- Group 3
- Group 4
- Groups 5-10

Facility Components

- Wind Turbine
- Permanent MET Tower
- Access Road
- Collection Line
- Facility Site



Sheet 5 of 8



Prepared February 5, 2024
Basemap: USDA NAIP "2022 New York 60cm" orthoimagery map
service

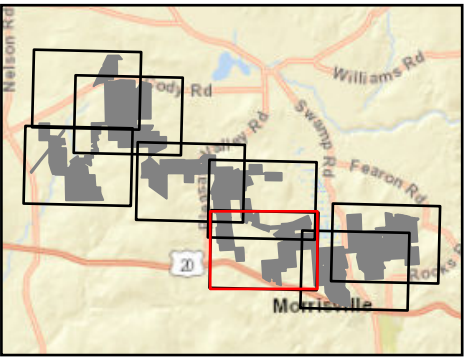


Hoffman Falls Wind

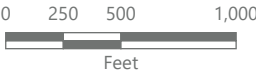
Towns of Eaton, Fenner, Nelson and
Smithfield, Madison County,
New York

**94-c Permit Application
Matter No. 23-00038**

- Mineral Soil Group
- Group 1
 - Group 2
 - Group 3
 - Group 4
 - Groups 5-10
- Facility Components
- Wind Turbine
 - Access Road
 - Collection Line
 - Laydown Yard
 - Facility Site

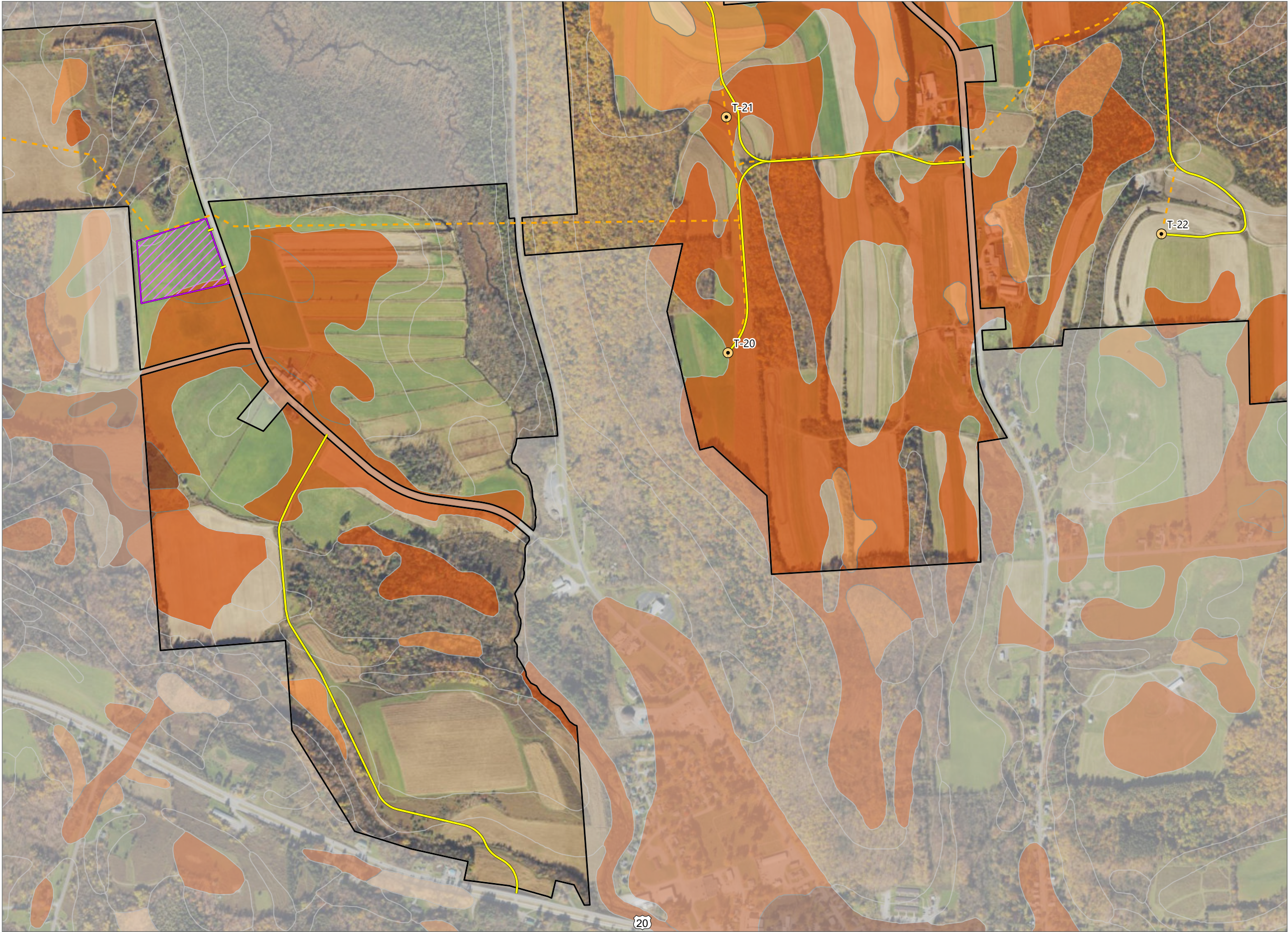


Sheet 6 of 8



Prepared February 5, 2024
Basemap: USDA NAIP "2022 New York 60cm" orthoimagery map
service

Figure 15-6. Mineral Soil Groups



Hoffman Falls Wind

Towns of Eaton, Fenner, Nelson and
Smithfield, Madison County,
New York

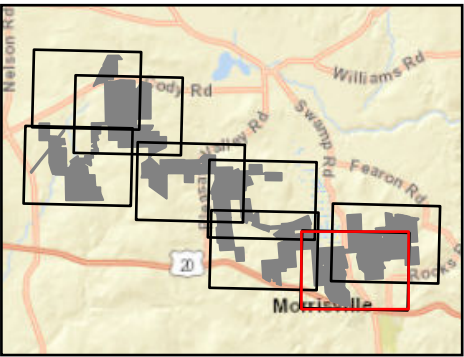
**94-c Permit Application
Matter No. 23-00038**

Mineral Soil Group

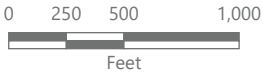
- Group 1
- Group 2
- Group 3
- Group 4
- Groups 5-10

Facility Components

- Wind Turbine
- Access Road
- Collection Line
- Laydown Yard
- Facility Site



Sheet 7 of 8



Prepared February 5, 2024
Basemap: USDA NAIP "2022 New York 60cm" orthoimagery map
service

Hoffman Falls Wind

Towns of Eaton, Fenner, Nelson and
Smithfield, Madison County,
New York

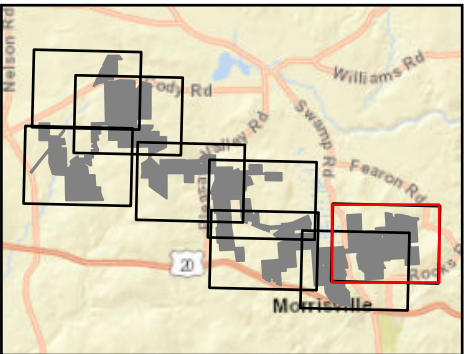
94-c Permit Application
Matter No. 23-00038

Mineral Soil Group

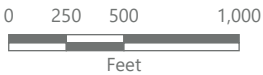
- Group 1
- Group 2
- Group 3
- Group 4
- Groups 5-10

Facility Components

- Wind Turbine
- Access Road
- Collection Line
- Facility Site



Sheet 8 of 8



Prepared February 5, 2024
Basemap: USDA NAIP "2022 New York 60cm" orthoimagery map
service