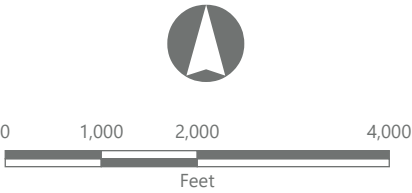
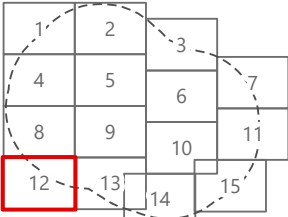


Hoffman Falls Wind Project
Towns of Eaton, Fenner, Nelson,
and Smithfield,
Madison County, New York

Visual Impact Assessment

- Viewpoint Location
- Simulation Viewpoint
- Potential Visibility of Blade Tips Only
- Potential Visibility of FAA Warning Light
- Facility Site
- Distance Zone Transition
- 5-Mile Study Area
- Landscape Similarity Zone
 - Agricultural/Rural Residential
 - Forest

Sheet 12 of 15



Scale: 1:24,000
Prepared May 23, 2024
Basemap: Esri "USGS Topo" map service

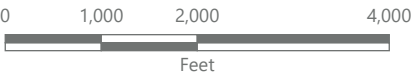
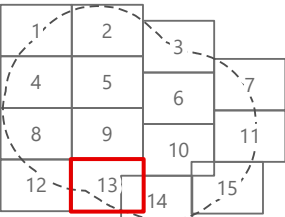
Hoffman Falls Wind Project

Towns of Eaton, Fenner, Nelson, and Smithfield,
Madison County, New York

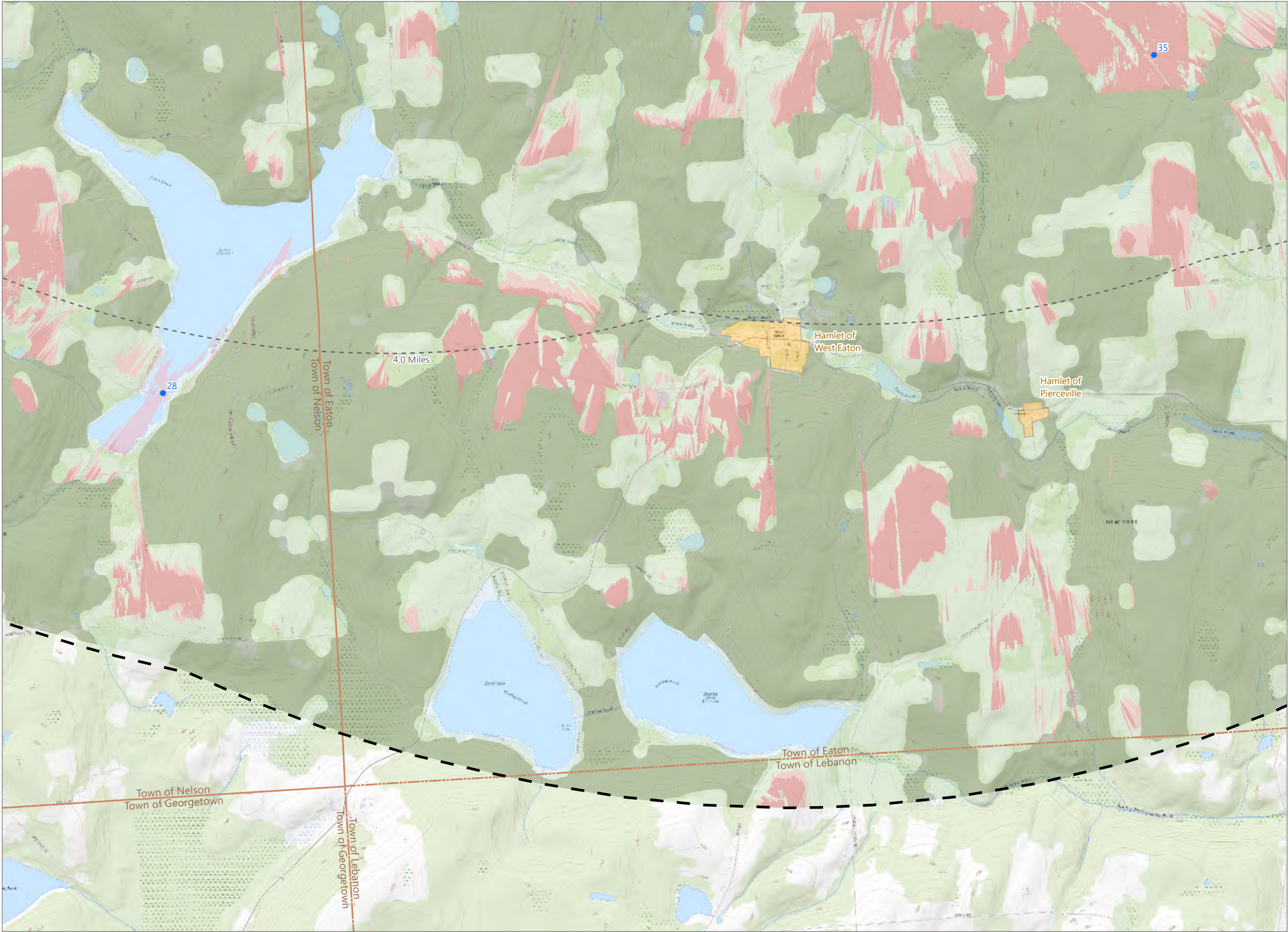
Visual Impact Assessment

- Viewpoint Location
- Wireframe Viewpoint
- Potential Visibility of Blade Tips Only
- Potential Visibility of FAA Warning Light
- Facility Site
- Distance Zone Transition
- 5-Mile Study Area
- Landscape Similarity Zone
 - Agricultural/Rural Residential
 - Forest
 - Water

Sheet 13 of 15



Scale: 1:24,000
Prepared May 23, 2024
Basemap: Esri "USGS Topo" map service

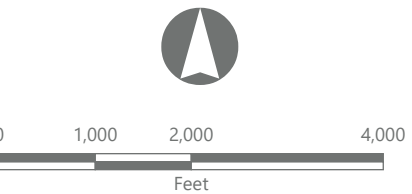
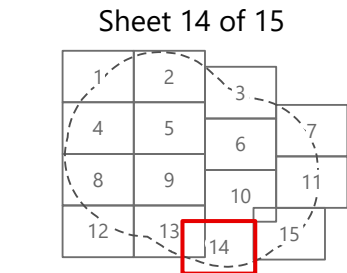


Hoffman Falls Wind Project

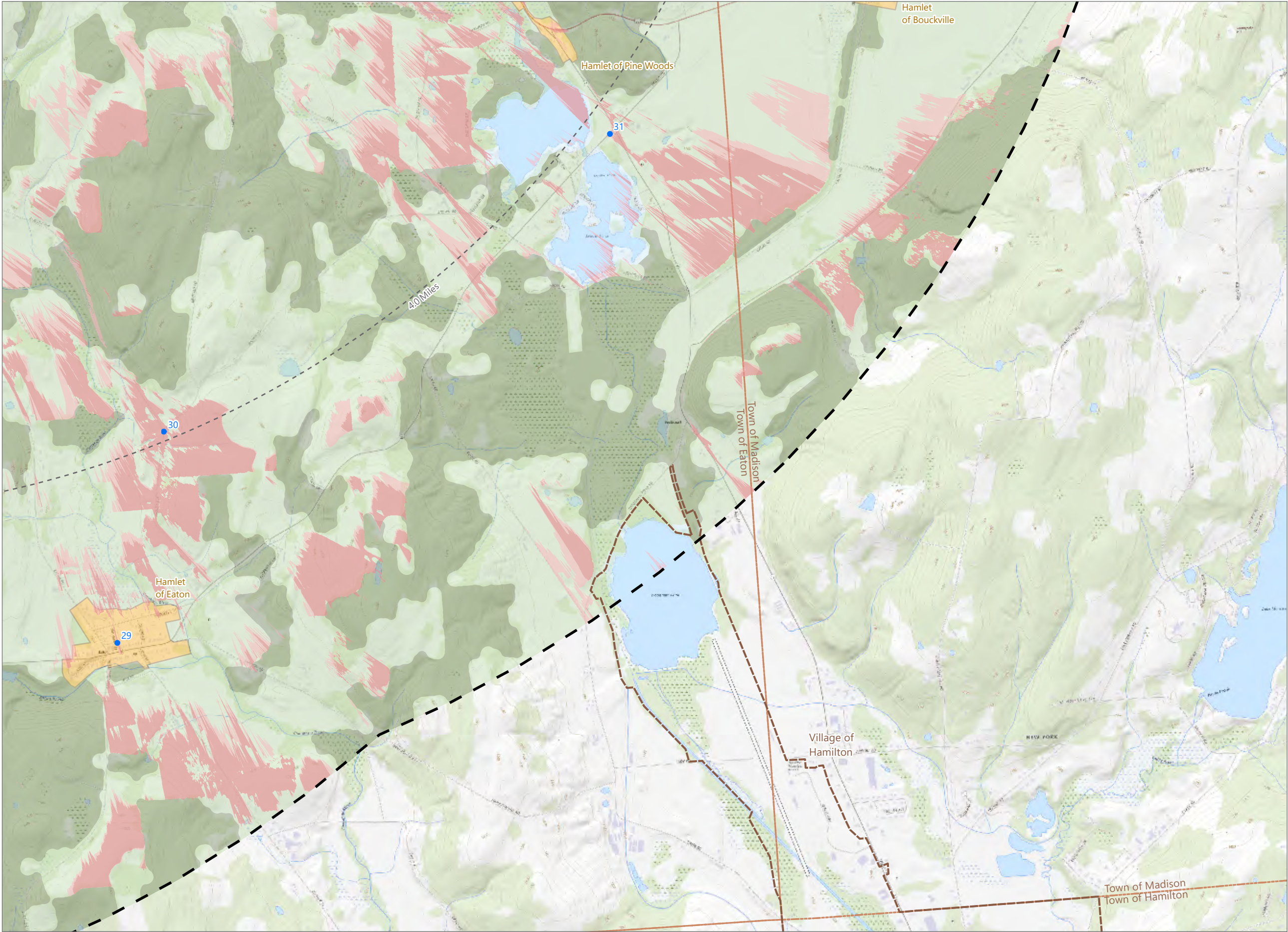
Towns of Eaton, Fenner, Nelson,
and Smithfield,
Madison County, New York

Visual Impact Assessment

- Viewpoint Location
- Potential Visibility of Blade Tips Only
- Potential Visibility of FAA Warning Light
- Facility Site
- Distance Zone Transition
- 5-Mile Study Area
- Landscape Similarity Zone
 - Agricultural/Rural Residential
 - Forest
 - Hamlet
 - Water



Scale: 1:24,000
Prepared May 23, 2024
Basemap: Esri "USGS Topo" map service



Hoffman Falls Wind Project

Towns of Eaton, Fenner, Nelson, and Smithfield,
Madison County, New York

Visual Impact Assessment

- Viewpoint Location
- Potential Visibility of Blade Tips Only
- Potential Visibility of FAA Warning Light
- Facility Site
- Distance Zone Transition
- 5-Mile Study Area
- Landscape Similarity Zone
 - Agricultural/Rural Residential
 - Forest
 - Hamlet
 - Water

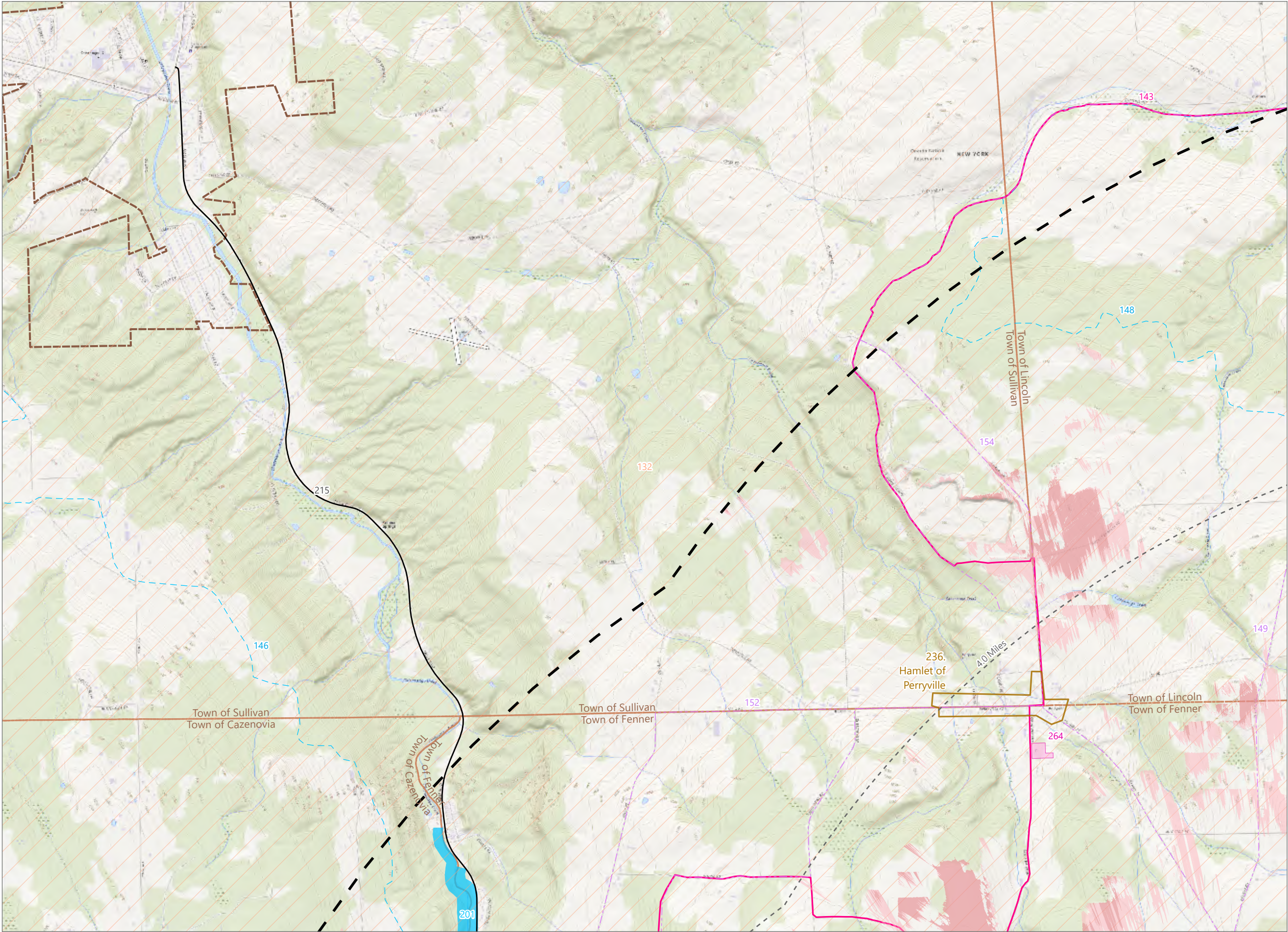
Sheet 15 of 15

1	2	3	
4	5	6	7
8	9	10	11
12	13	14	15

01,0002,0004,000

Feet

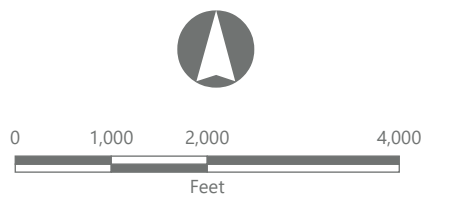
Scale: 1:24,000
Prepared May 23, 2024
Basemap: Esri "USGS Topo" map service



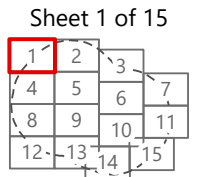
Hoffman Falls Wind Project
Towns of Eaton, Fenner, Nelson,
and Smithfield,
Madison County, New York

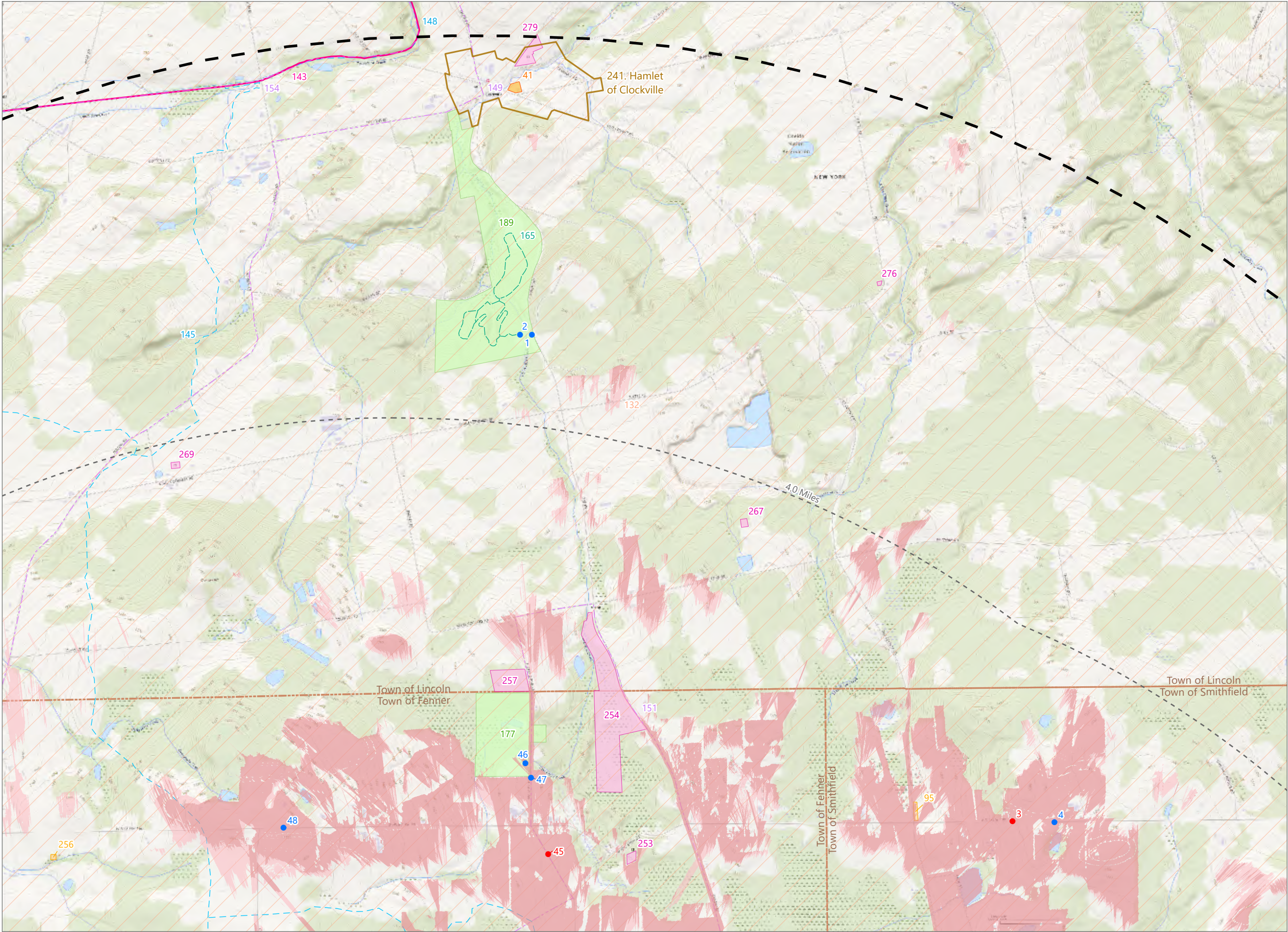
Visual Impact Assessment

- Potential Visibility of Blade Tips Only
- Potential Visibility of FAA Warning Light
- 5-Mile Study Area
- Visually Sensitive Resources
 - Snowmobile Trail
 - State or Federal Trail
 - Bike Trail
 - State, US, or Interstate Highway
 - River or Stream with Public Fishing Rights Easement
 - Erie Canalway National Heritage Corridor
 - Stakeholder Identified Resource
 - Hamlet



Scale: 1:24,000
Prepared May 23, 2024
Basemap: Esri "USGS Topo" map service



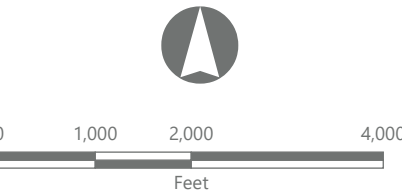


Hoffman Falls Wind Project

Towns of Eaton, Fenner, Nelson, and Smithfield, Madison County, New York

Visual Impact Assessment

- Viewpoint Location
- Simulation Viewpoint
- Potential Visibility of Blade Tips Only
- Potential Visibility of FAA Warning Light
- 5-Mile Study Area
- Visually Sensitive Resources
 - Snowmobile Trail
 - State or Federal Trail
 - Bike Trail
 - Other Trail
- NRHP-Listed Resource
- NRHP-Eligible Resource
- Erie Canalway National Heritage Corridor
- Local Park or Recreation Area
- Stakeholder Identified Resource
- Hamlet



Scale: 1:24,000
Prepared May 23, 2024
Basemap: Esri "USGS Topo" map service

Sheet 2 of 15

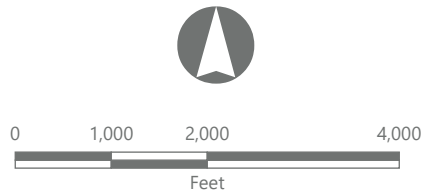
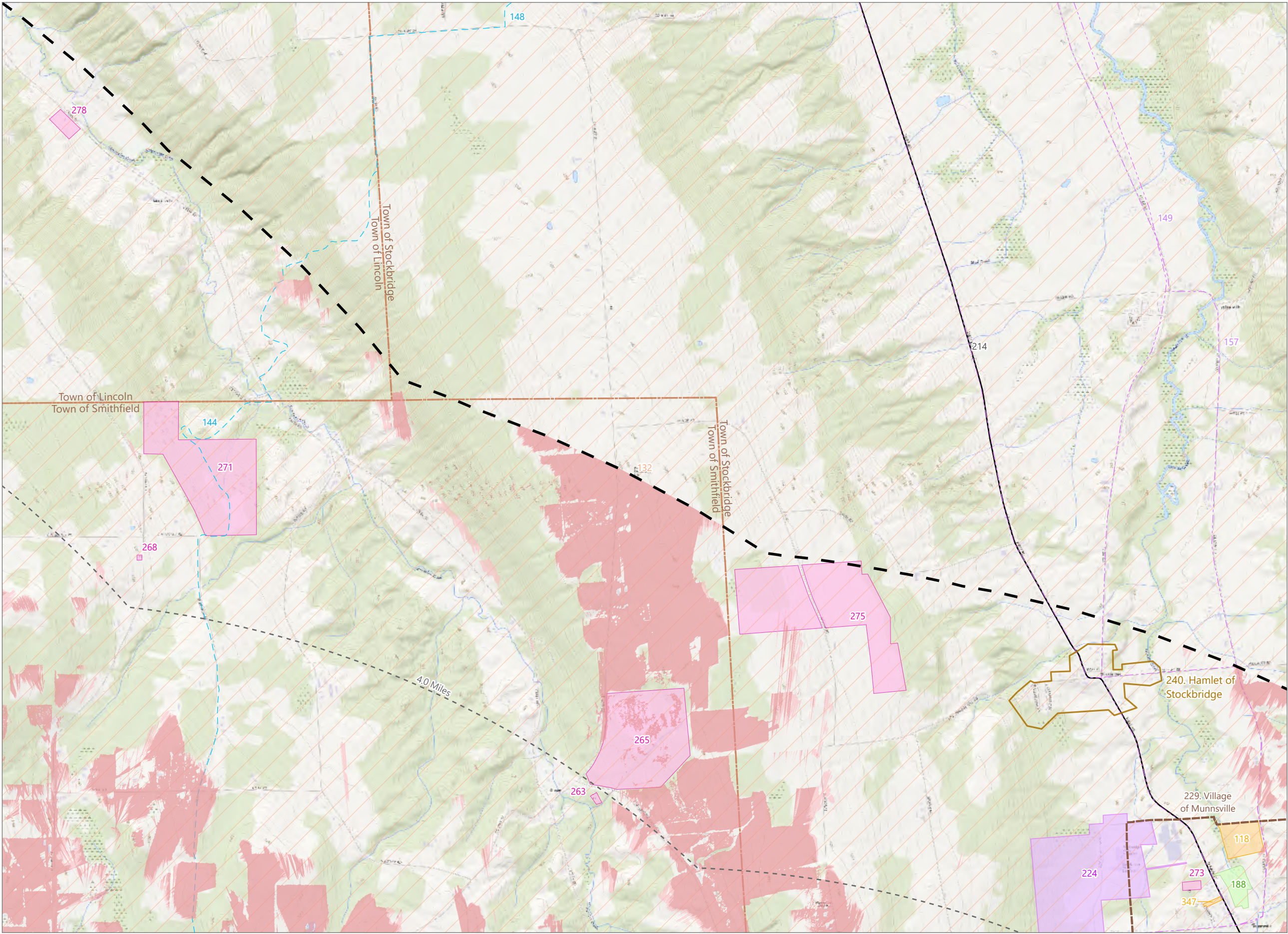
1	2	3
4	5	6
7	8	9
10	11	12
13	14	15

Hoffman Falls Wind Project

Towns of Eaton, Fenner, Nelson, and Smithfield, Madison County, New York

Visual Impact Assessment

- Potential Visibility of Blade Tips Only
- Potential Visibility of FAA Warning Light
- 5-Mile Study Area
- Visually Sensitive Resources
 - Snowmobile Trail
 - Bike Trail
 - State, US, or Interstate Highway
 - NRHP-Eligible Resource
 - Erie Canalway National Heritage Corridor
 - Local Park or Recreation Area
 - School
 - Stakeholder Identified Resource
 - Hamlet
 - Village



Scale: 1:24,000
Prepared May 23, 2024
Basemap: Esri "USGS Topo" map service

Sheet 3 of 15

1	2	3	4	5	6	7
8	9	10	11	12	13	14
15	16	17	18	19	20	21

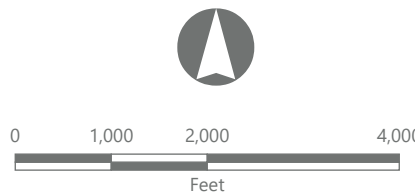
EDR

Hoffman Falls Wind Project

Towns of Eaton, Fenner, Nelson, and Smithfield, Madison County, New York

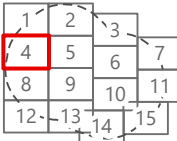
Visual Impact Assessment

- Viewpoint Location
- Simulation Viewpoint
- Potential Visibility of Blade Tips Only
- Potential Visibility of FAA Warning Light
- 5-Mile Study Area
- Visually Sensitive Resources
 - Snowmobile Trail
 - State or Federal Trail
 - Bike Trail
 - Other Trail
 - State, US, or Interstate Highway
 - River or Stream with Public Fishing Rights Easement
 - NRHP-Listed Resource
 - NRHP-Eligible Resource
 - State Park
 - State Fishing or Waterway Access Site
 - Erie Canalway National Heritage Corridor
 - Publicly Accessible Conservation Land or Easement
 - Named Lake, Pond, or Reservoir
 - Stakeholder Identified Resource

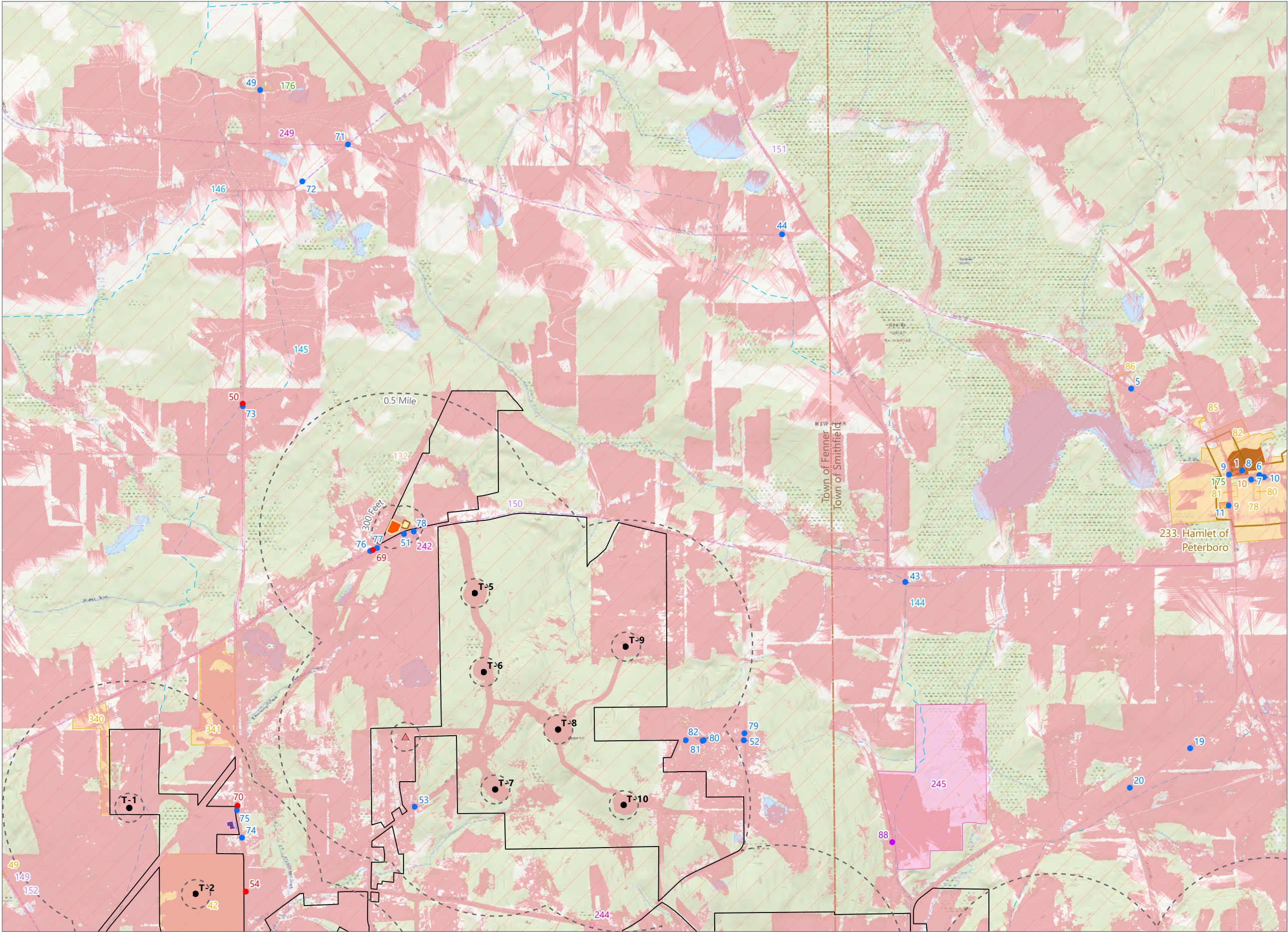


Scale: 1:24,000
Prepared May 23, 2024
Basemap: Esri "USGS Topo" map service

Sheet 4 of 15



EDR

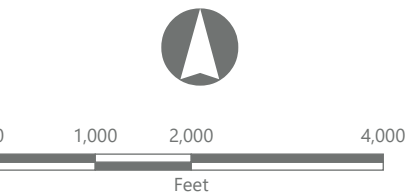


Hoffman Falls Wind Project

Towns of Eaton, Fenner, Nelson, and Smithfield,
Madison County, New York

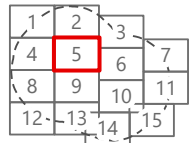
Visual Impact Assessment

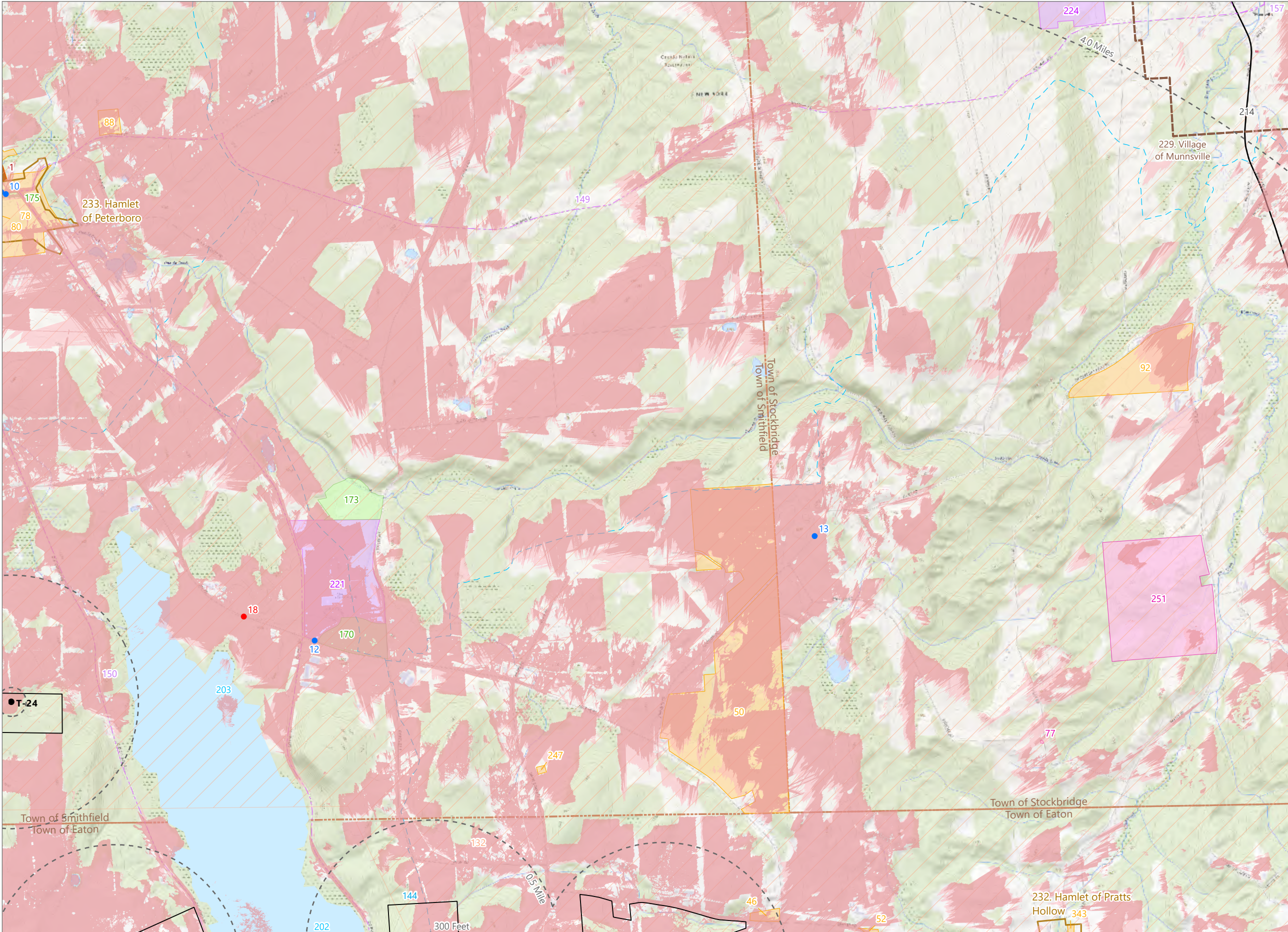
- Viewpoint Location
- Simulation Viewpoint
- Supplemental Viewpoint
- O&M Building
- POI Substation
- Collection Substation
- ADLS Tower
- Wind Turbine
- Potential Visibility of Blade Tips Only
- Potential Visibility of FAA Warning Light
- Facility Site
- 5-Mile Study Area
- Visually Sensitive Resources
- Snowmobile Trail
- Bike Trail
- National Historic Landmark
- NRHP-Listed Resource
- NRHP-Eligible Resource
- Erie Canalway National Heritage Corridor
- Local Park or Recreation Area
- Stakeholder Identified Resource
- Hamlet



Scale: 1:24,000
Prepared May 23, 2024
Basemap: Esri "USGS Topo" map service

Sheet 5 of 15





Hoffman Falls Wind Project

Towns of Eaton, Fenner, Nelson, and Smithfield,
Madison County, New York

Visual Impact Assessment

- Viewpoint Location
- Simulation Viewpoint
- Wind Turbine
- Potential Visibility of Blade Tips Only
- Potential Visibility of FAA Warning Light
- Facility Site
- 5-Mile Study Area

Visually Sensitive Resources

- Snowmobile Trail
- Bike Trail
- State, US, or Interstate Highway
- National Historic Landmark
- NRHP-Listed Resource
- NRHP-Eligible Resource
- Erie Canalway National Heritage Corridor
- Local Park or Recreation Area
- School
- Named Lake, Pond, or Reservoir
- Stakeholder Identified Resource
- Hamlet
- Village

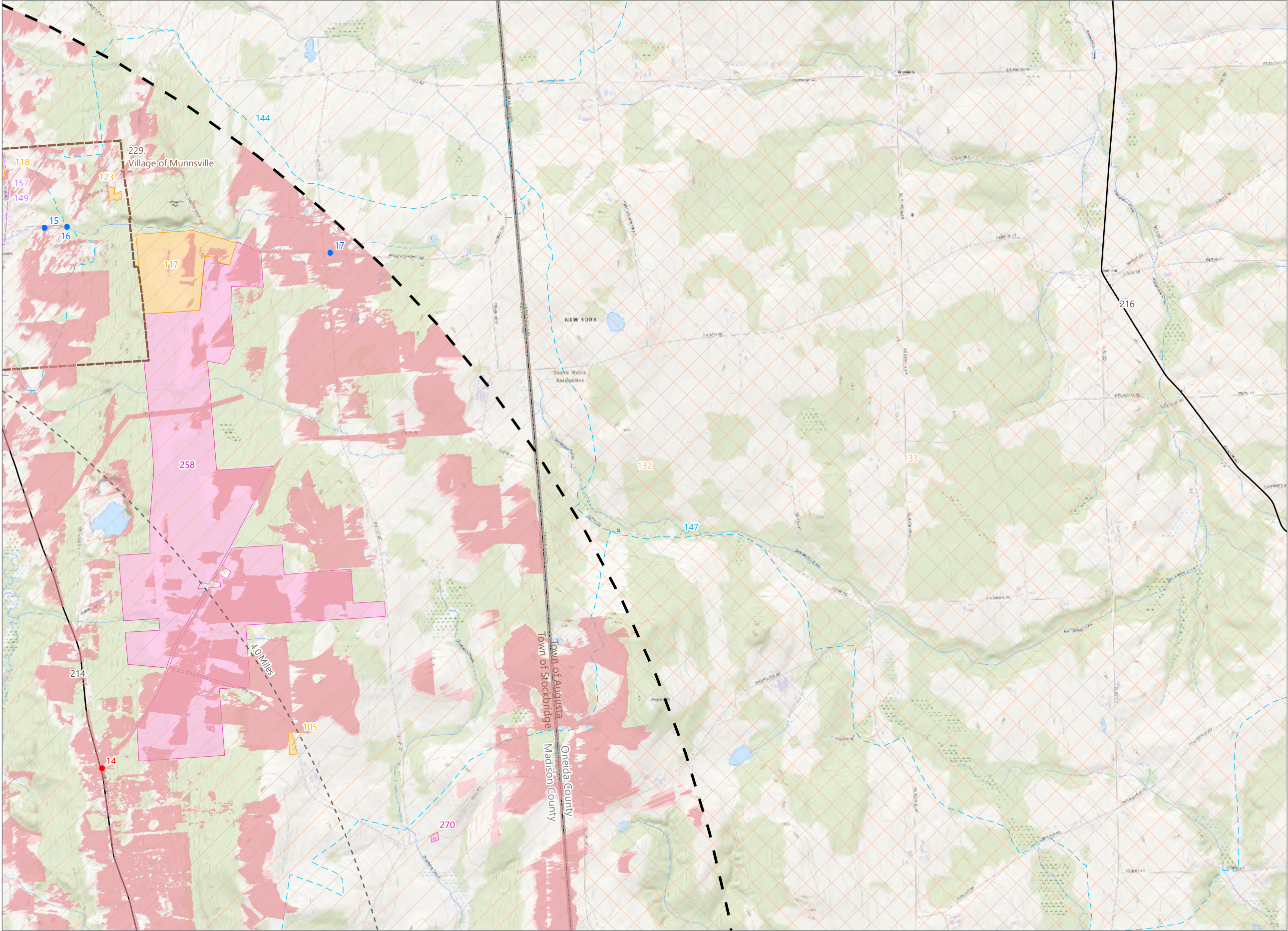
0 1,000 2,000 4,000
Feet

Sheet 6 of 15

Scale: 1:24,000
Prepared May 23, 2024
Basemap: Esri "USGS Topo" map service

1	2	3
4	5	6
8	9	10
12	13	14

EDR



Hoffman Falls Wind Project

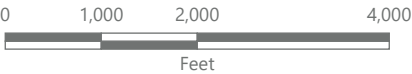
Towns of Eaton, Fenner, Nelson,
and Smithfield,
Madison County, New York

Visual Impact Assessment

- Viewpoint Location
- Simulation Viewpoint
- Potential Visibility of Blade Tips Only
- Potential Visibility of FAA Warning Light
- 5-Mile Study Area

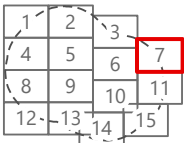
Visually Sensitive Resources

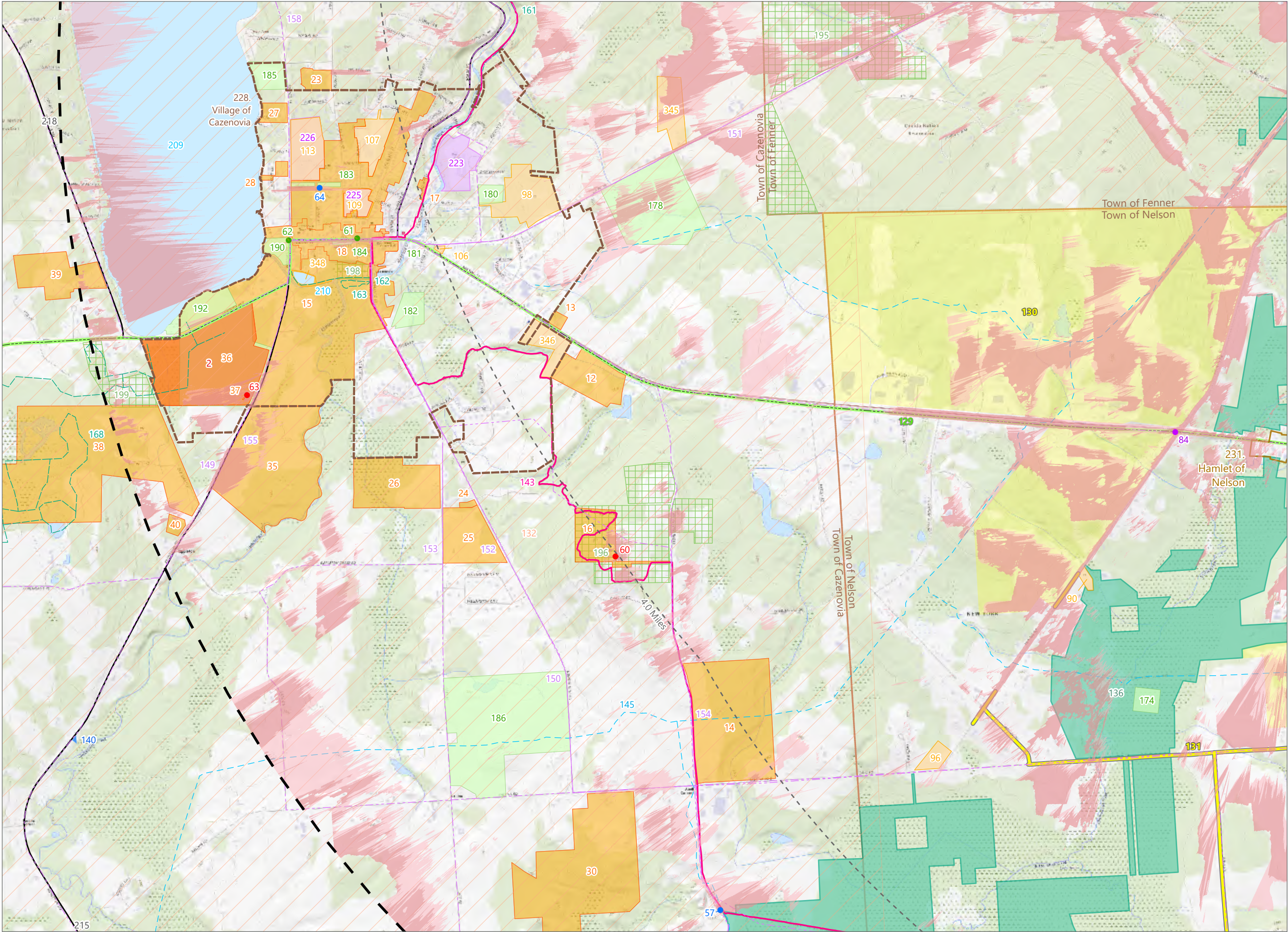
- Snowmobile Trail
- Bike Trail
- State, US, or Interstate Highway
- NRHP-Eligible Resource
- Erie Canalway National Heritage Corridor
- Mohawk Valley State Heritage Area
- Stakeholder Identified Resource
- Village



Sheet 7 of 15

Scale: 1:24,000
Prepared May 23, 2024
Basemap: Esri "USGS Topo" map
service





Hoffman Falls Wind Project

Towns of Eaton, Fenner, Nelson, and Smithfield,
Madison County, New York

Visual Impact Assessment

- Viewpoint Location
- Wireframe Viewpoint
- Simulation Viewpoint
- Supplemental Viewpoint
- Potential Visibility of Blade Tips Only
- Potential Visibility of FAA Warning Light
- 5-Mile Study Area

Visually Sensitive Resources

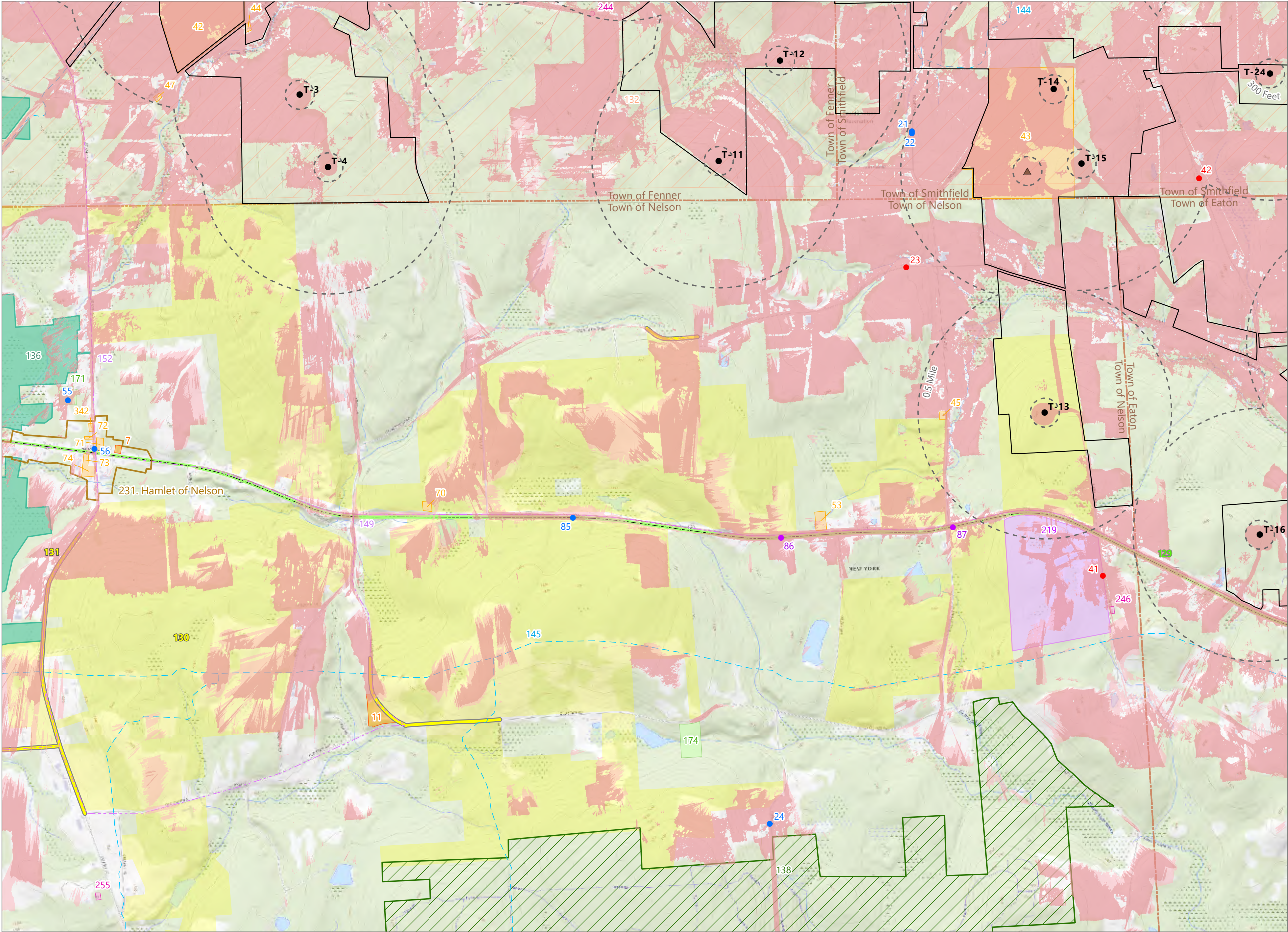
- Snowmobile Trail
- State or Federal Trail
- Scenic Byway
- Scenic Roadway
- Bike Trail
- Other Trail
- State, US, or Interstate Highway
- State Historic Site
- NRHP-Listed Resource
- NRHP-Eligible Resource
- State Unique Area
- State Fishing or Waterway Access Site
- Scenic Overlay District
- Erie Canalway National Heritage Corridor
- Publicly Accessible Conservation Land or Easement
- Local Park or Recreation Area
- School
- Named Lake, Pond, or Reservoir
- Hamlet
- Village

Scale: 1:24,000
Prepared May 23, 2024
Basemap: Esri "USGS Topo" map service

Sheet 8 of 15

1	2	3
4	5	6
7	8	9
10	11	12
13	14	15

EDR



Hoffman Falls Wind Project

Towns of Eaton, Fenner, Nelson, and Smithfield, Madison County, New York

Visual Impact Assessment

- Viewpoint Location
- Simulation Viewpoint
- Supplemental Viewpoint
- MET Tower
- Wind Turbine
- Potential Visibility of Blade Tips Only
- Potential Visibility of FAA Warning Light
- Facility Site
- 5-Mile Study Area

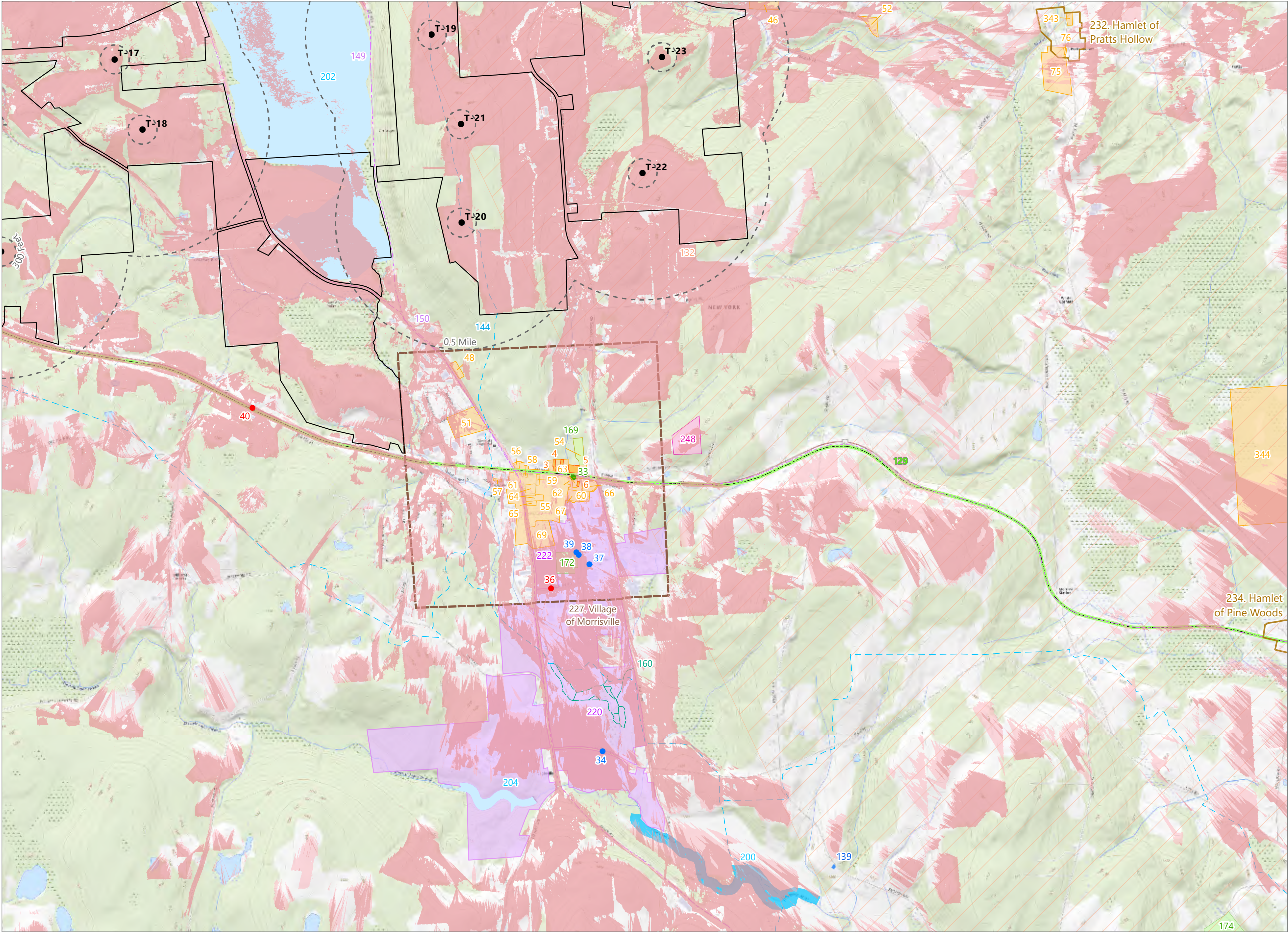
Visually Sensitive Resources

- Snowmobile Trail
- Scenic Byway
- Scenic Roadway
- Bike Trail
- NRHP-Listed Resource
- NRHP-Eligible Resource
- State Forest
- State Unique Area
- Scenic Overlay District
- Erie Canalway National Heritage Corridor
- Local Park or Recreation Area
- School
- Stakeholder Identified Resource
- Hamlet

0 1,000 2,000 4,000
Feet

Sheet 9 of 15

Scale: 1:24,000
Prepared May 23, 2024
Basemap: Esri "USGS Topo" map service



Hoffman Falls Wind Project

Towns of Eaton, Fenner, Nelson, and Smithfield,
Madison County, New York

Visual Impact Assessment

● Viewpoint Location

● Wireframe Viewpoint

● Simulation Viewpoint

● Wind Turbine

Potential Visibility of Blade Tips Only

Potential Visibility of FAA Warning Light

Facility Site

5-Mile Study Area

Visually Sensitive Resources

--- Snowmobile Trail

--- Scenic Byway

--- Bike Trail

--- Other Trail

River or Stream with Public Fishing Rights Easement

NRHP-Listed Resource

NRHP-Eligible Resource

State Fishing or Waterway Access Site

Erie Canalway National Heritage Corridor

Local Park or Recreation Area

School

Named Lake, Pond, or Reservoir

Stakeholder Identified Resource

Hamlet

Village

0

1,000

2,000

4,000

Feet

Sheet 10 of 15

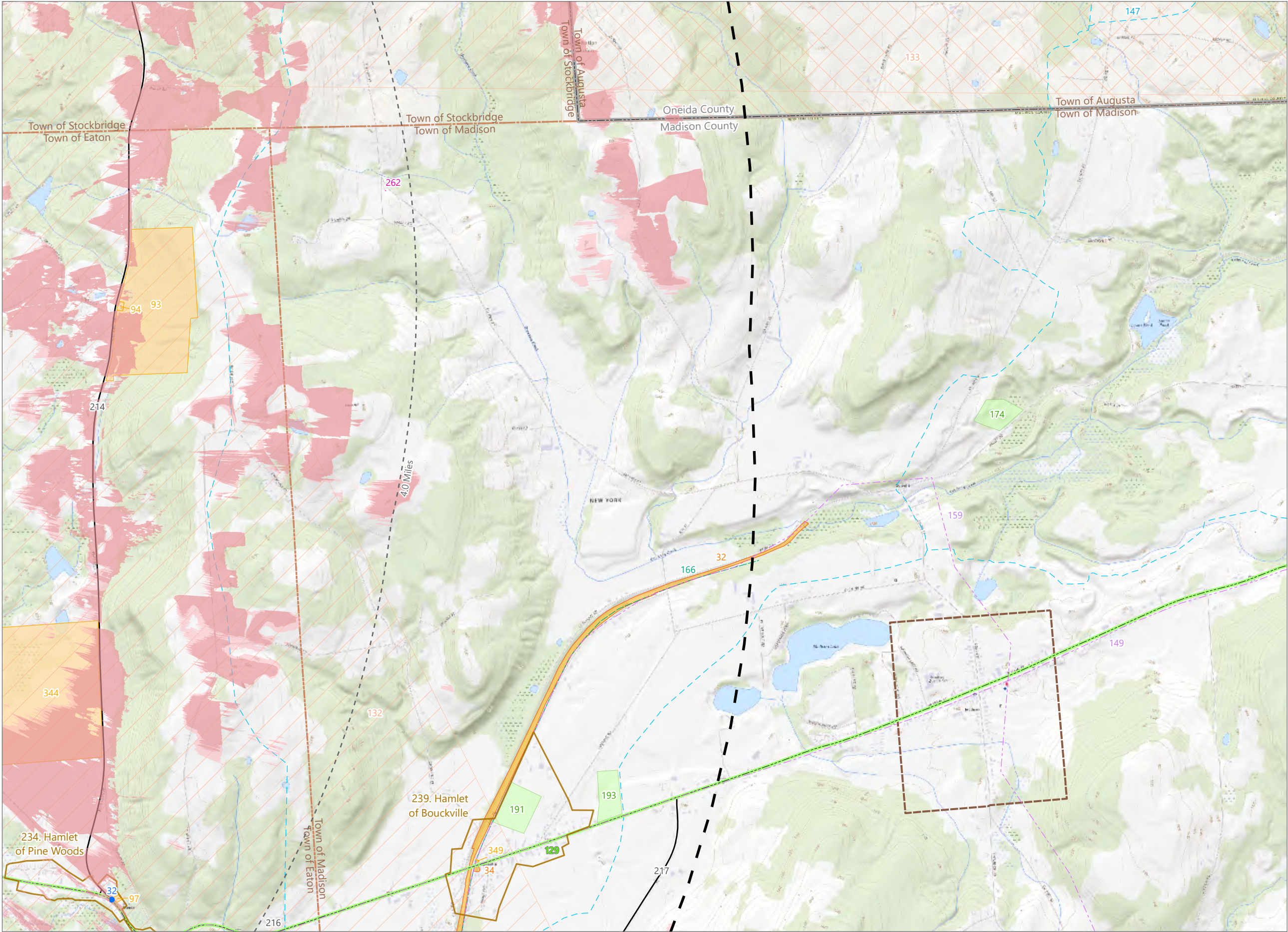
Scale: 1:24,000

Prepared May 23, 2024

Basemap: Esri "USGS Topo" map service

1	2	3
4	5	6
8	9	10
12	13	14

EDR

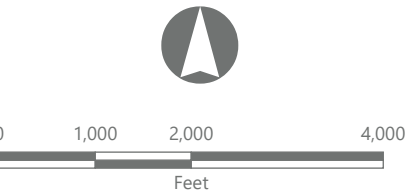


Hoffman Falls Wind Project

Towns of Eaton, Fenner, Nelson, and Smithfield, Madison County, New York

Visual Impact Assessment

- Viewpoint Location
- Potential Visibility of Blade Tips Only
- Potential Visibility of FAA Warning Light
- 5-Mile Study Area
- Visually Sensitive Resources
 - Snowmobile Trail
 - Scenic Byway
 - Bike Trail
 - Other Trail
 - State, US, or Interstate Highway
 - NRHP-Listed Resource
 - NRHP-Eligible Resource
 - Erie Canalway National Heritage Corridor
 - Mohawk Valley State Heritage Area
 - Local Park or Recreation Area
 - Stakeholder Identified Resource
 - Hamlet



Scale: 1:24,000
Prepared May 23, 2024
Basemap: Esri "USGS Topo" map service

Sheet 11 of 15

