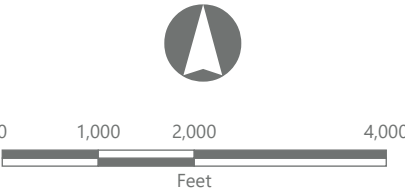


Hoffman Falls Wind Project

Towns of Eaton, Fenner, Nelson, and Smithfield,
Madison County, New York

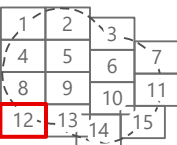
Visual Impact Assessment

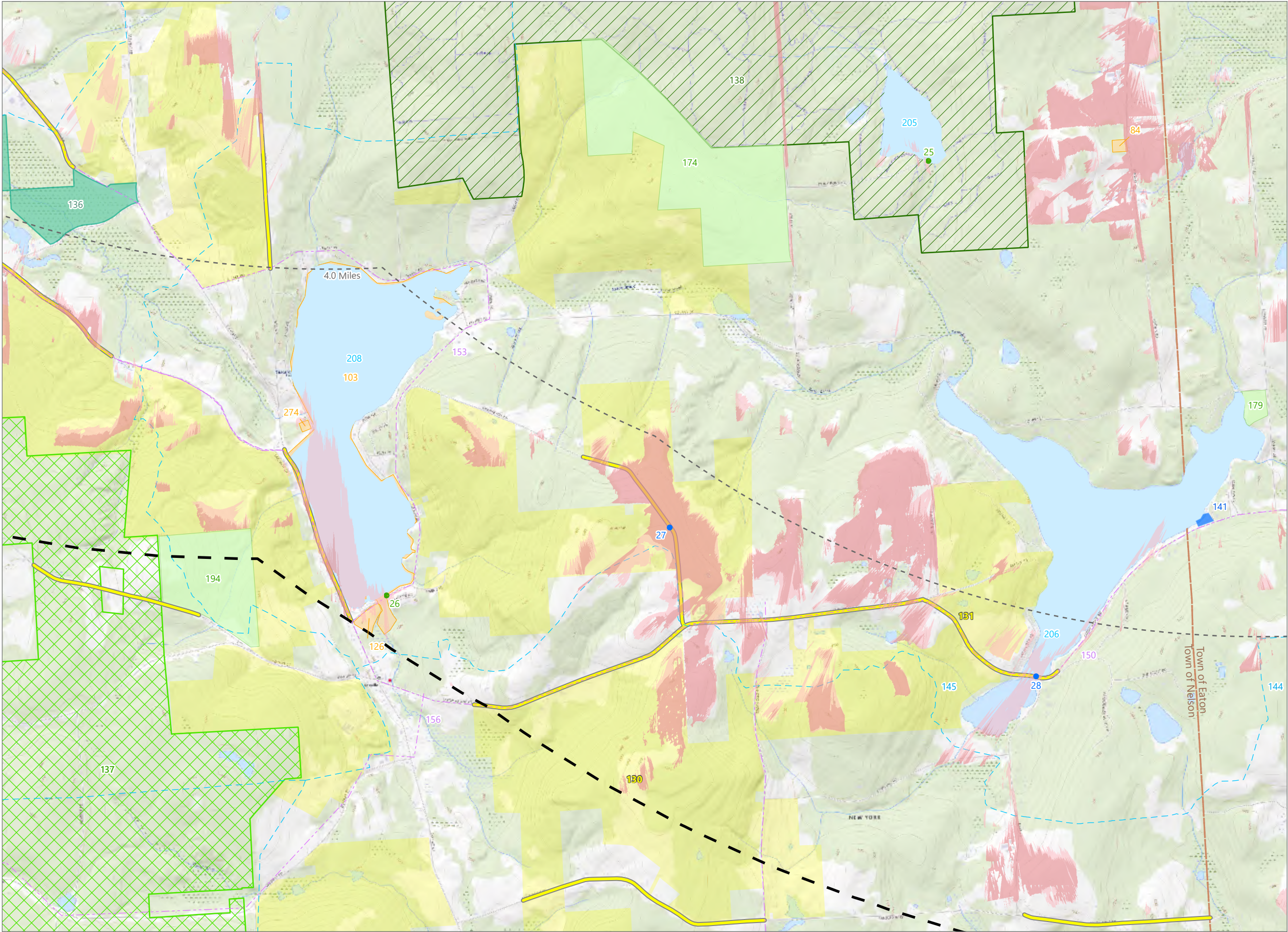
- Viewpoint Location
- Simulation Viewpoint
- Potential Visibility of Blade Tips Only
- Potential Visibility of FAA Warning Light
- 5-Mile Study Area
- Visually Sensitive Resources
 - Snowmobile Trail
 - State or Federal Trail
 - Scenic Roadway
 - Bike Trail
 - Other Trail
 - State, US, or Interstate Highway
 - River or Stream with Public Fishing Rights Easement
 - NRHP-Listed Resource
 - State Unique Area
 - Wildlife Management Area
 - Scenic Overlay District
 - Erie Canalway National Heritage Corridor
 - Local Park or Recreation Area
 - Stakeholder Identified Resource



Scale: 1:24,000
Prepared May 23, 2024
Basemap: Esri "USGS Topo" map service

Sheet 12 of 15





Hoffman Falls Wind Project

Towns of Eaton, Fenner, Nelson, and Smithfield,
Madison County, New York

Visual Impact Assessment

- Viewpoint Location
- Wireframe Viewpoint
- Potential Visibility of Blade Tips Only
- Potential Visibility of FAA Warning Light
- 5-Mile Study Area

Visually Sensitive Resources

- Snowmobile Trail
- Scenic Roadway
- Bike Trail
- NRHP-Eligible Resource
- State Forest
- State Unique Area
- Wildlife Management Area
- State Fishing or Waterway Access Site
- Scenic Overlay District
- Local Park or Recreation Area
- Named Lake, Pond, or Reservoir

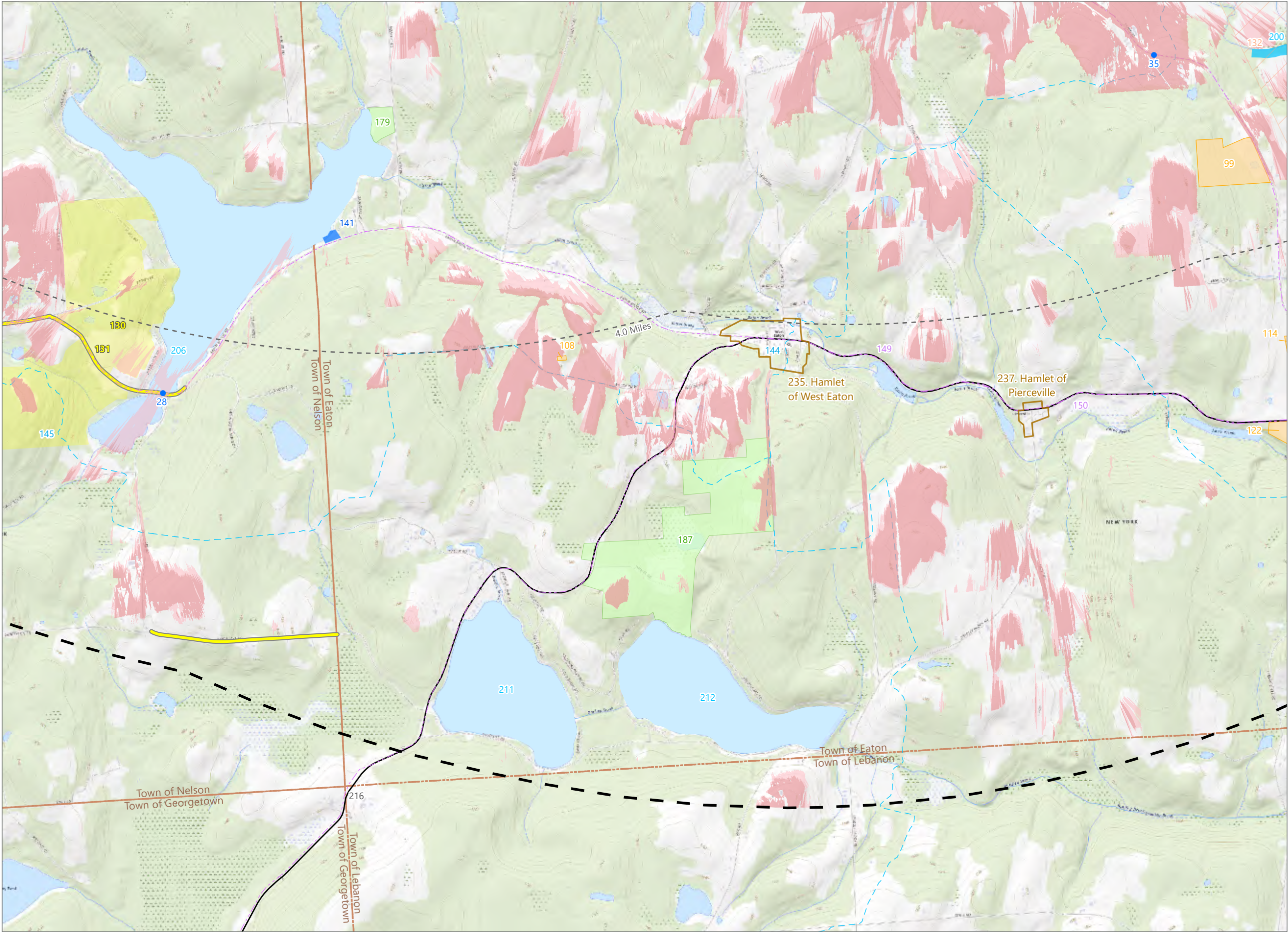
0 1,000 2,000 4,000
Feet

Scale: 1:24,000
Prepared May 23, 2024
Basemap: Esri "USGS Topo" map service

Sheet 13 of 15

1	2	3
4	5	6
8	9	10
12	13	14

EDR



Hoffman Falls Wind Project

Towns of Eaton, Fenner, Nelson, and Smithfield,
Madison County, New York

Visual Impact Assessment

- Viewpoint Location
- Potential Visibility of Blade Tips Only
- Potential Visibility of FAA Warning Light
- 5-Mile Study Area

Visually Sensitive Resources

- Snowmobile Trail
- Scenic Roadway
- Bike Trail
- State, US, or Interstate Highway
- River or Stream with Public Fishing Rights Easement
- NRHP-Eligible Resource
- State Fishing or Waterway Access Site
- Scenic Overlay District
- Erie Canalway National Heritage Corridor
- Local Park or Recreation Area
- Named Lake, Pond, or Reservoir
- Hamlet

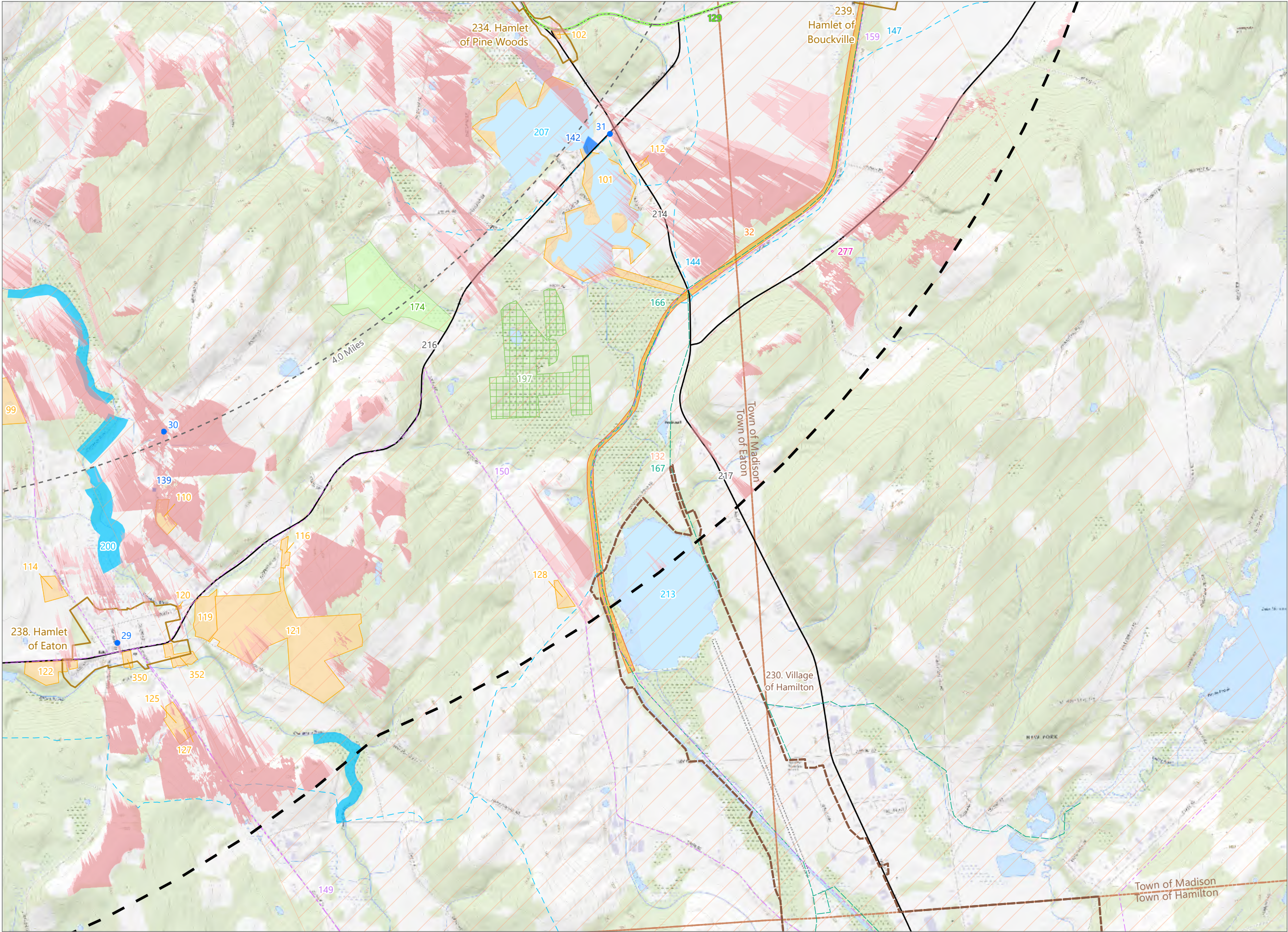
0 1,000 2,000 4,000
Feet

Scale: 1:24,000
Prepared May 23, 2024
Basemap: Esri "USGS Topo" map service

Sheet 14 of 15

1	2	3
4	5	6
7	8	9
10	11	12
13	14	15

EDR

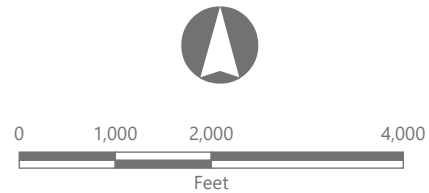


Hoffman Falls Wind Project

Towns of Eaton, Fenner, Nelson, and Smithfield,
Madison County, New York

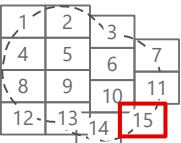
Visual Impact Assessment

- Viewpoint Location
- Potential Visibility of Blade Tips Only
- Potential Visibility of FAA Warning Light
- 5-Mile Study Area
- Visually Sensitive Resources
 - Snowmobile Trail
 - Scenic Byway
 - Bike Trail
 - Other Trail
- State, US, or Interstate Highway
- River or Stream with Public Fishing Rights Easement
- NRHP-Listed Resource
- NRHP-Eligible Resource
- State Fishing or Waterway Access Site
- Erie Canalway National Heritage Corridor
- Publicly Accessible Conservation Land or Easement
- Local Park or Recreation Area
- Named Lake, Pond, or Reservoir
- Stakeholder Identified Resource
- Hamlet
- Village



Scale: 1:24,000
Prepared May 23, 2024
Basemap: Esri "USGS Topo" map service

Sheet 15 of 15

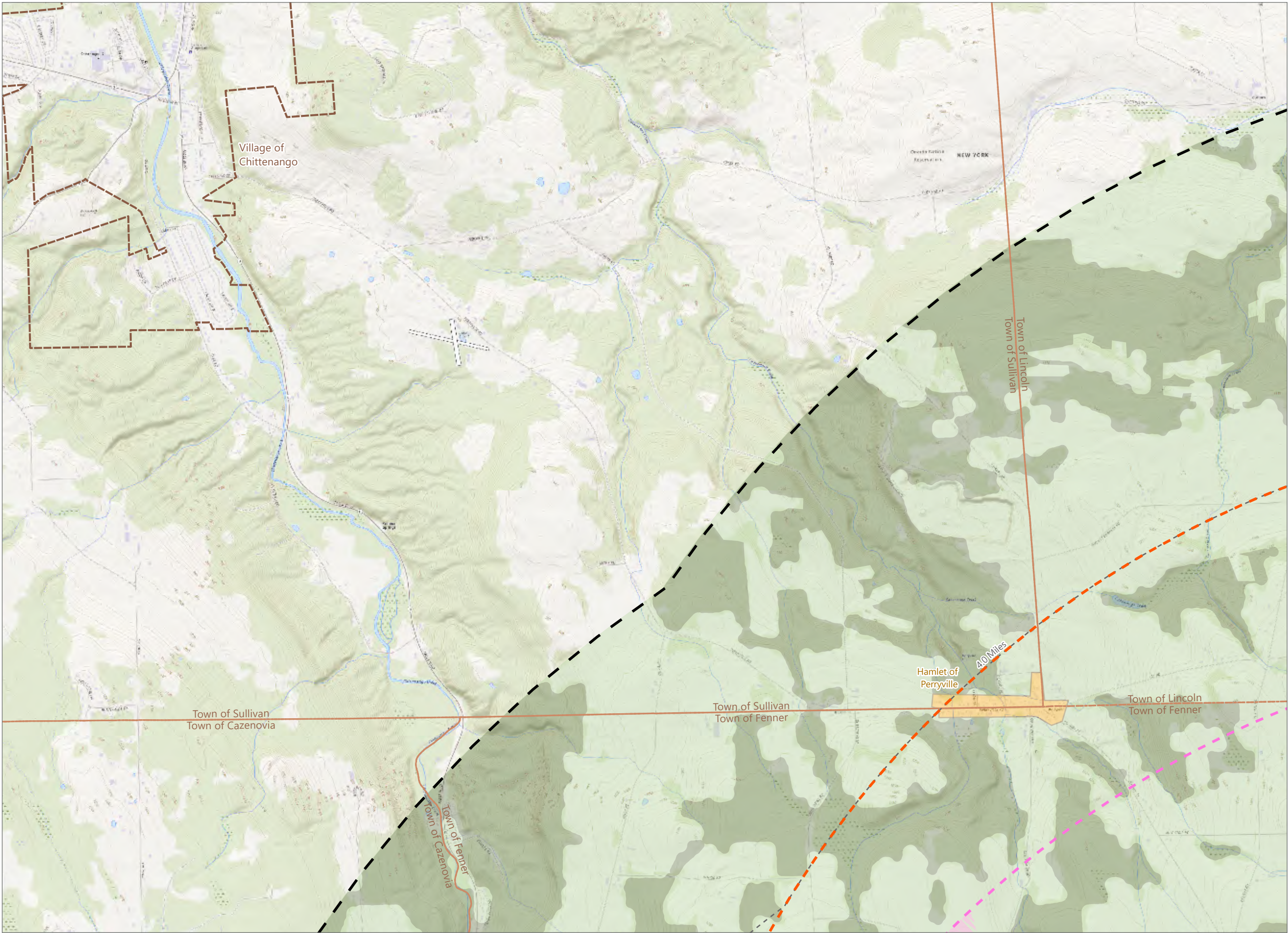


Hoffman Falls Wind Project

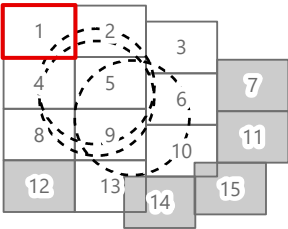
Towns of Eaton, Fenner, Nelson, and Smithfield,
Madison County, New York

Visual Impact Assessment

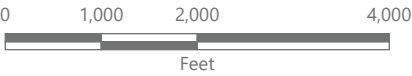
- Potential ADLS Tower Visibility
- ADLS Tower 4-Mile Study Area
- Interconnection Facility 4-Mile Study Area
- 5-Mile Study Area
- Landscape Similarity Zone
 - Agricultural/Rural Residential
 - Forest
 - Hamlet



Sheet 1 of 15



*Sheets shown in grey in the sheet locator inset above are not included herein as they do not overlap the MET Tower/ADLS/Interconnection Facility Study Areas.



Scale: 1:24,000 Prepared May 23, 2024
Basemap: Esri "USGS Topo" map service

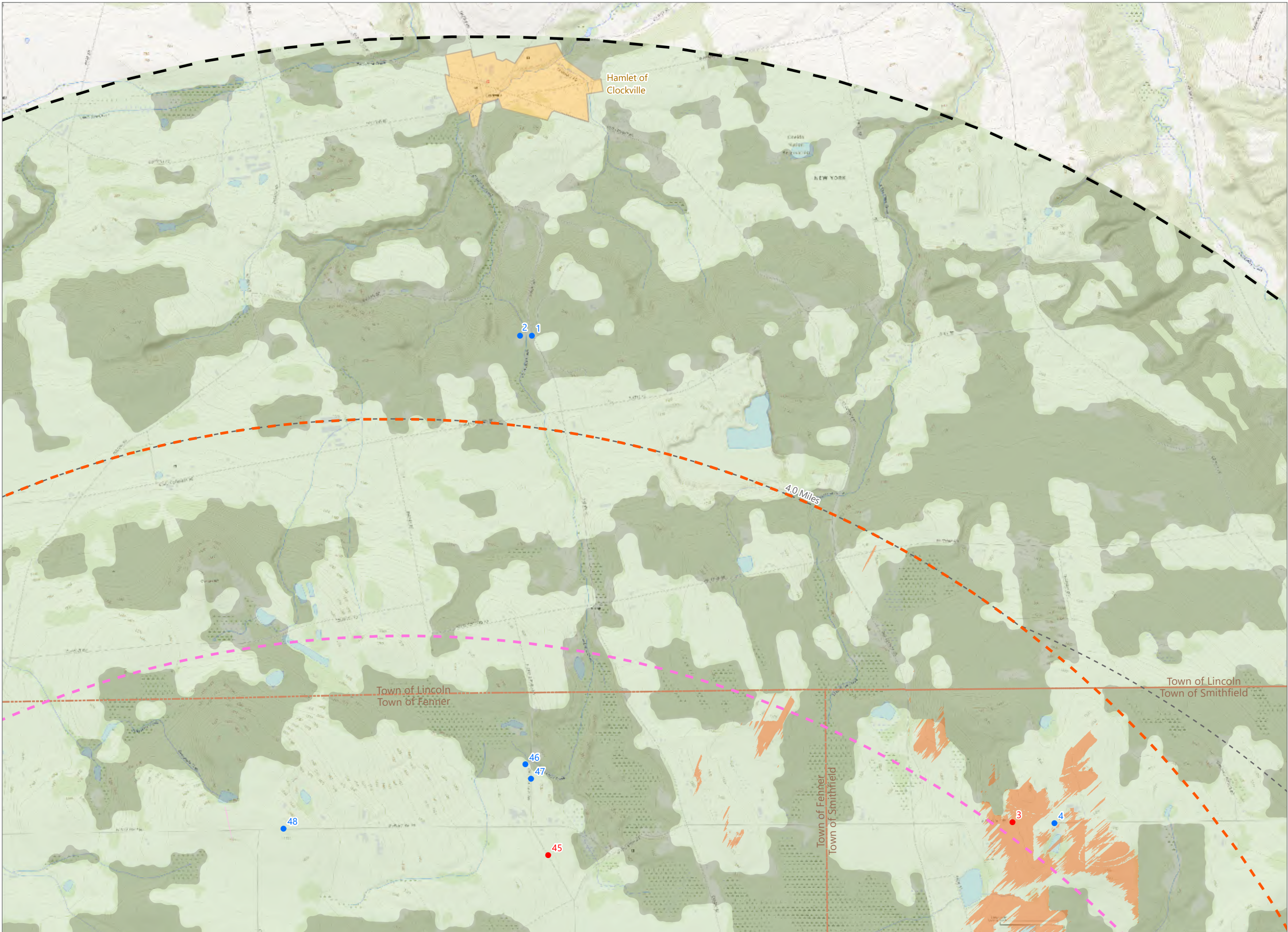
Hoffman Falls Wind Project

Towns of Eaton, Fenner, Nelson, and Smithfield,
Madison County, New York

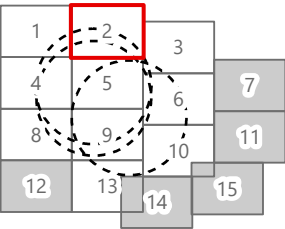
Visual Impact Assessment

- Viewpoint Location
- Simulation Viewpoint
- Potential ADLS Tower Visibility
- ADLS Tower 4-Mile Study Area
- Potential Interconnection Facility Visibility
- Interconnection Facility 4-Mile Study Area
- 5-Mile Study Area

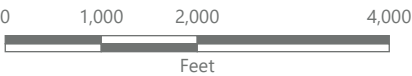
- Landscape Similarity Zone
- Agricultural/Rural Residential
 - Forest
 - Hamlet



Sheet 2 of 15



*Sheets shown in grey in the sheet locator inset above are not included herein as they do not overlap the MET Tower/ADLS/Interconnection Facility Study Areas.



Scale: 1:24,000 Prepared May 23, 2024
Basemap: Esri "USGS Topo" map service

Hoffman Falls Wind Project

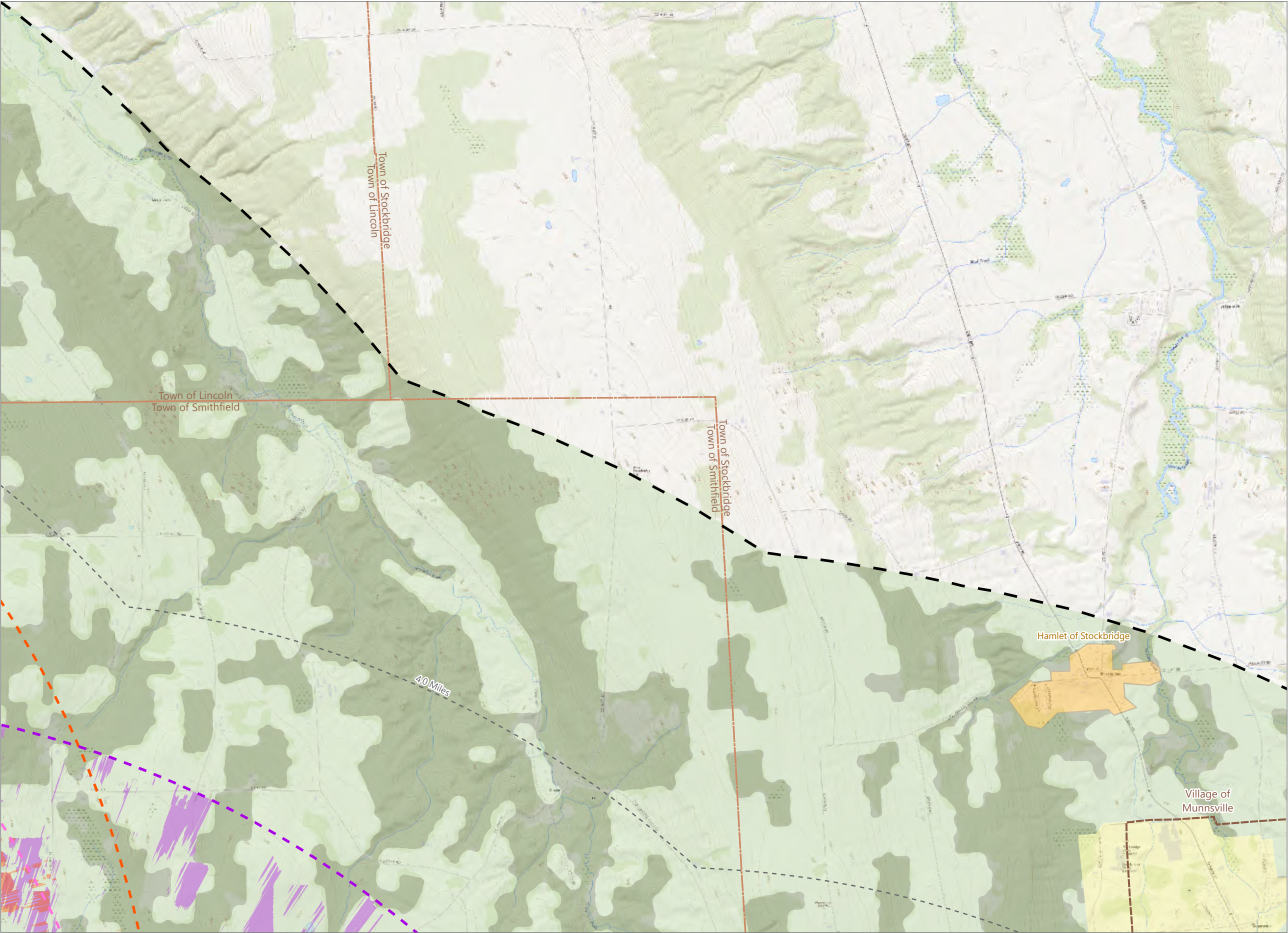
Towns of Eaton, Fenner, Nelson, and Smithfield, Madison County, New York

Visual Impact Assessment

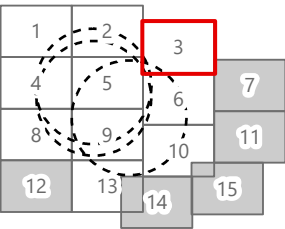
- ADLS Tower 4-Mile Study Area
- Potential MET Tower Visibility
- MET Tower 4-Mile Study Area
- Potential Interconnection Facility Visibility
- Interconnection Facility 4-Mile Study Area
- 5-Mile Study Area

Landscape Similarity Zone

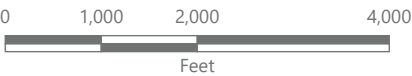
- Agricultural/Rural Residential
- Forest
- Hamlet
- Village



Sheet 3 of 15



*Sheets shown in grey in the sheet locator inset above are not included herein as they do not overlap the MET Tower/ADLS/Interconnection Facility Study Areas.



Scale: 1:24,000 Prepared May 23, 2024
Basemap: Esri "USGS Topo" map service

Hoffman Falls Wind Project

Towns of Eaton, Fenner, Nelson, and Smithfield,
Madison County, New York

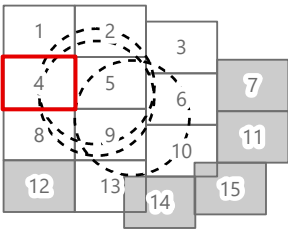
Visual Impact Assessment

- Viewpoint Location
- Simulation Viewpoint
- Potential ADLS Tower Visibility
- ADLS Tower 4-Mile Study Area
- MET Tower 4-Mile Study Area
- Potential Interconnection Facility Visibility
- Interconnection Facility 4-Mile Study Area
- 5-Mile Study Area

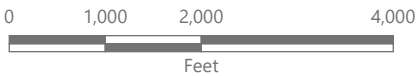
Landscape Similarity Zone

- Agricultural/Rural Residential
- Forest
- Village
- Water

Sheet 4 of 15



*Sheets shown in grey in the sheet locator inset above are not included herein as they do not overlap the MET Tower/ADLS/Interconnection Facility Study Areas.



Scale: 1:24,000 Prepared May 23, 2024
Basemap: Esri "USGS Topo" map service

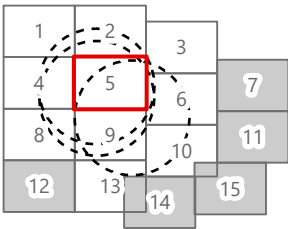
Hoffman Falls Wind Project

Towns of Eaton, Fenner, Nelson, and Smithfield,
Madison County, New York

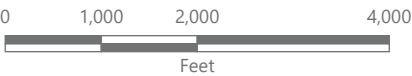
Visual Impact Assessment

- Viewpoint Location
- Simulation Viewpoint
- Supplemental Viewpoint
- Wind Turbine
- ADLS Tower
- Potential ADLS Tower Visibility
- ADLS Tower 4-Mile Study Area
- Potential MET Tower Visibility
- MET Tower 4-Mile Study Area
- Collection Substation
- POI Substation
- Potential Interconnection Facility Visibility
- Interconnection Facility 4-Mile Study Area
- O&M Building
- Facility Site
- 5-Mile Study Area
- Landscape Similarity Zone
 - Agricultural/Rural Residential
 - Forest
 - Hamlet

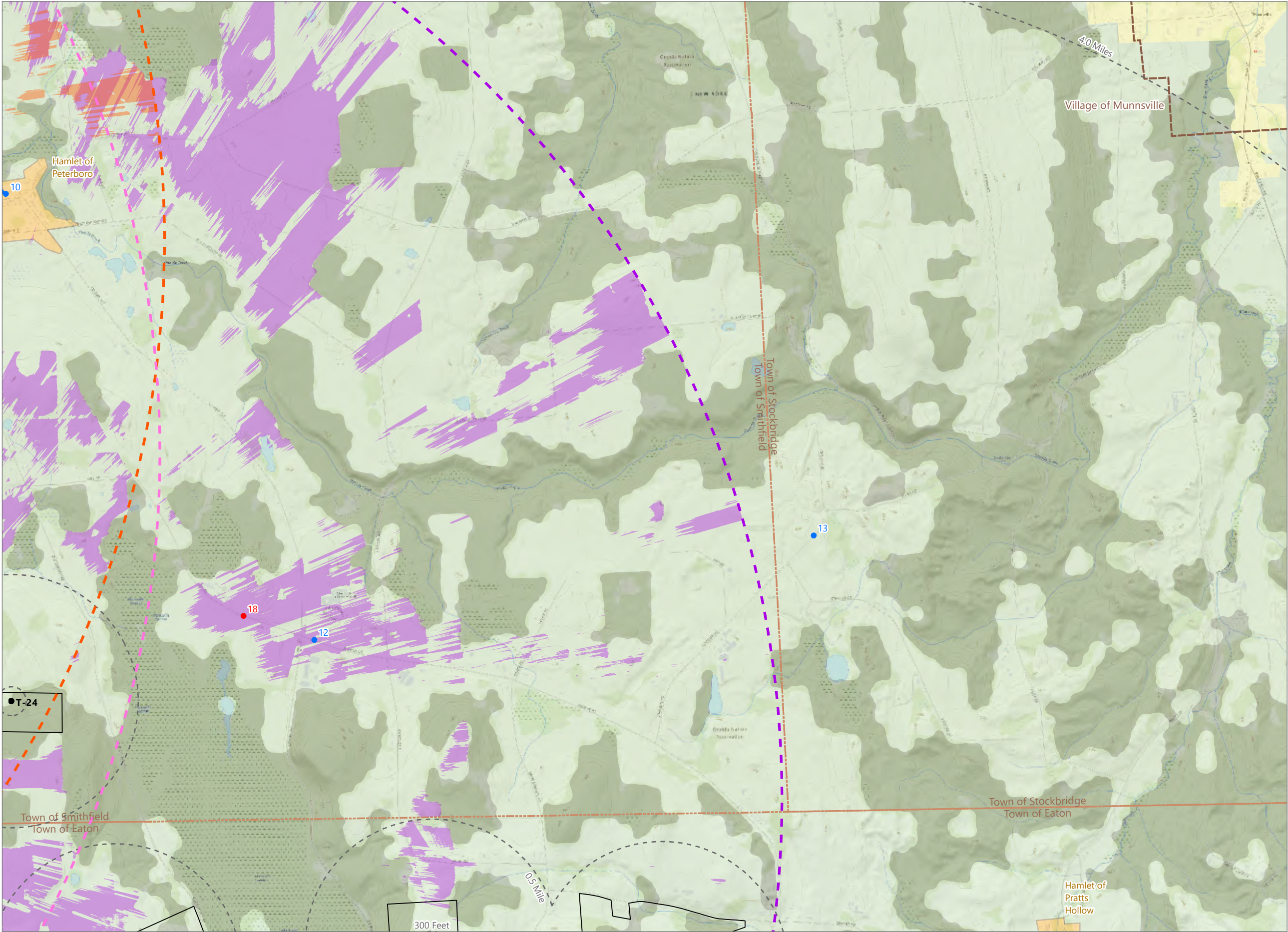
Sheet 5 of 15



*Sheets shown in grey in the sheet locator inset above are not included herein as they do not overlap the MET Tower/ADLS/Interconnection Facility Study Areas.



Scale: 1:24,000 Prepared May 23, 2024
Basemap: Esri "USGS Topo" map service



Hoffman Falls Wind Project

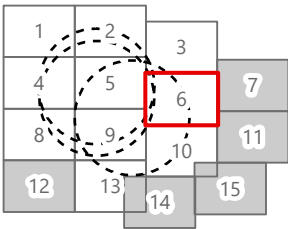
Towns of Eaton, Fenner, Nelson, and Smithfield, Madison County, New York

Visual Impact Assessment

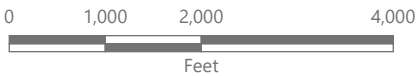
- Viewpoint Location
- Simulation Viewpoint
- Wind Turbine
- ADLS Tower 4-Mile Study Area
- Potential MET Tower Visibility
- MET Tower 4-Mile Study Area
- Potential Interconnection Facility Visibility
- Interconnection Facility 4-Mile Study Area
- Facility Site
- 5-Mile Study Area

- Landscape Similarity Zone
- Agricultural/Rural Residential
 - Forest
 - Hamlet
 - Village

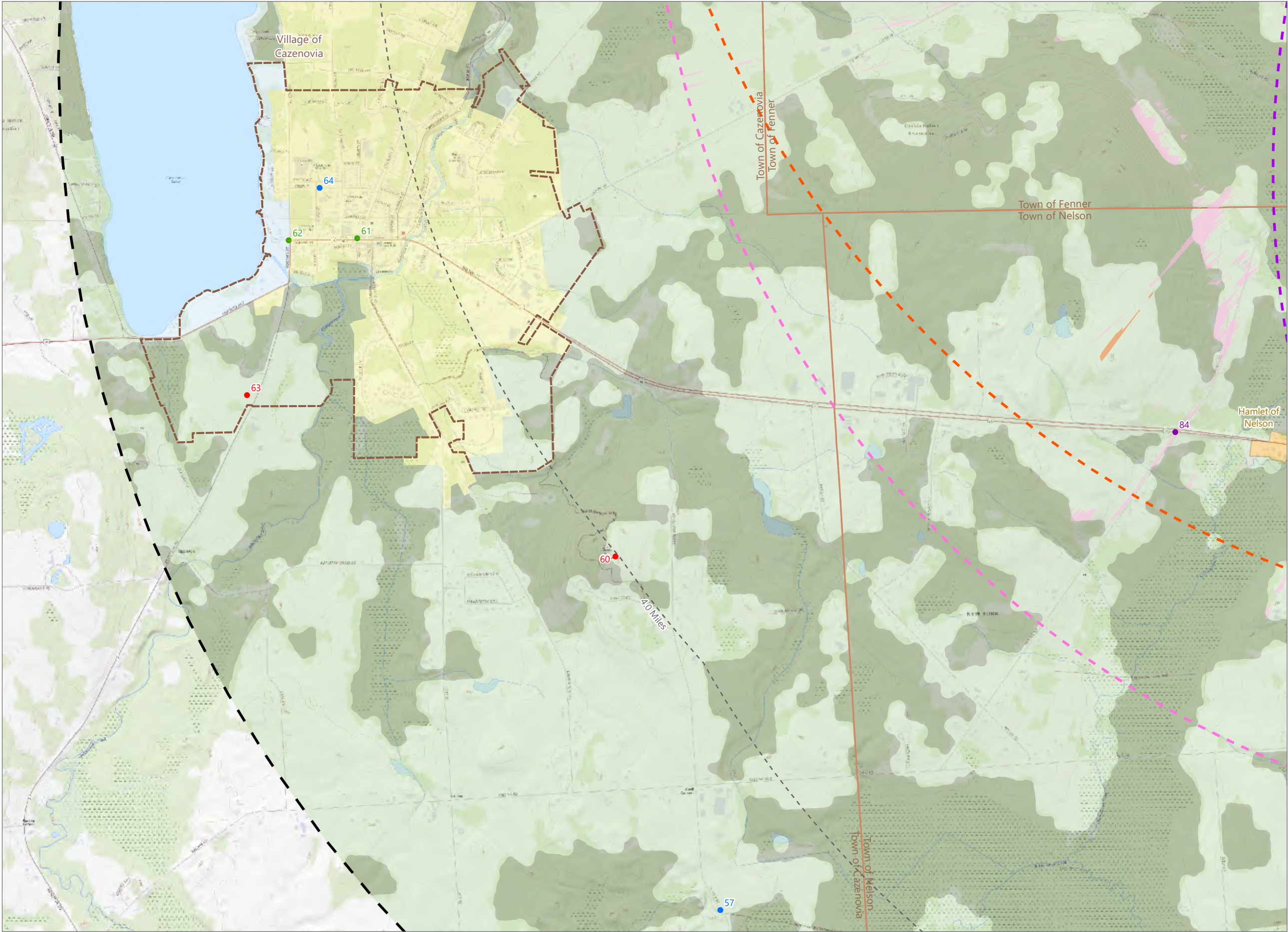
Sheet 6 of 15



*Sheets shown in grey in the sheet locator inset above are not included herein as they do not overlap the MET Tower/ADLS/Interconnection Facility Study Areas.



Scale: 1:24,000 Prepared May 23, 2024
Basemap: Esri "USGS Topo" map service



Hoffman Falls Wind Project

Towns of Eaton, Fenner, Nelson, and Smithfield,
Madison County, New York

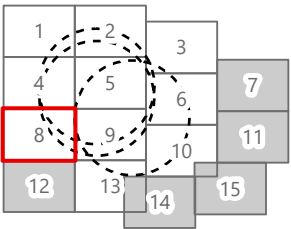
Visual Impact Assessment

- Viewpoint Location
- Wireframe Viewpoint
- Simulation Viewpoint
- Supplemental Viewpoint
- Potential ADLS Tower Visibility
- ADLS Tower 4-Mile Study Area
- MET Tower 4-Mile Study Area
- Potential Interconnection Facility Visibility
- Interconnection Facility 4-Mile Study Area
- 5-Mile Study Area

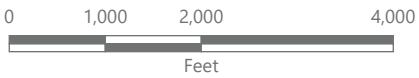
Landscape Similarity Zone

- Agricultural/Rural Residential
- Forest
- Hamlet
- Village
- Water

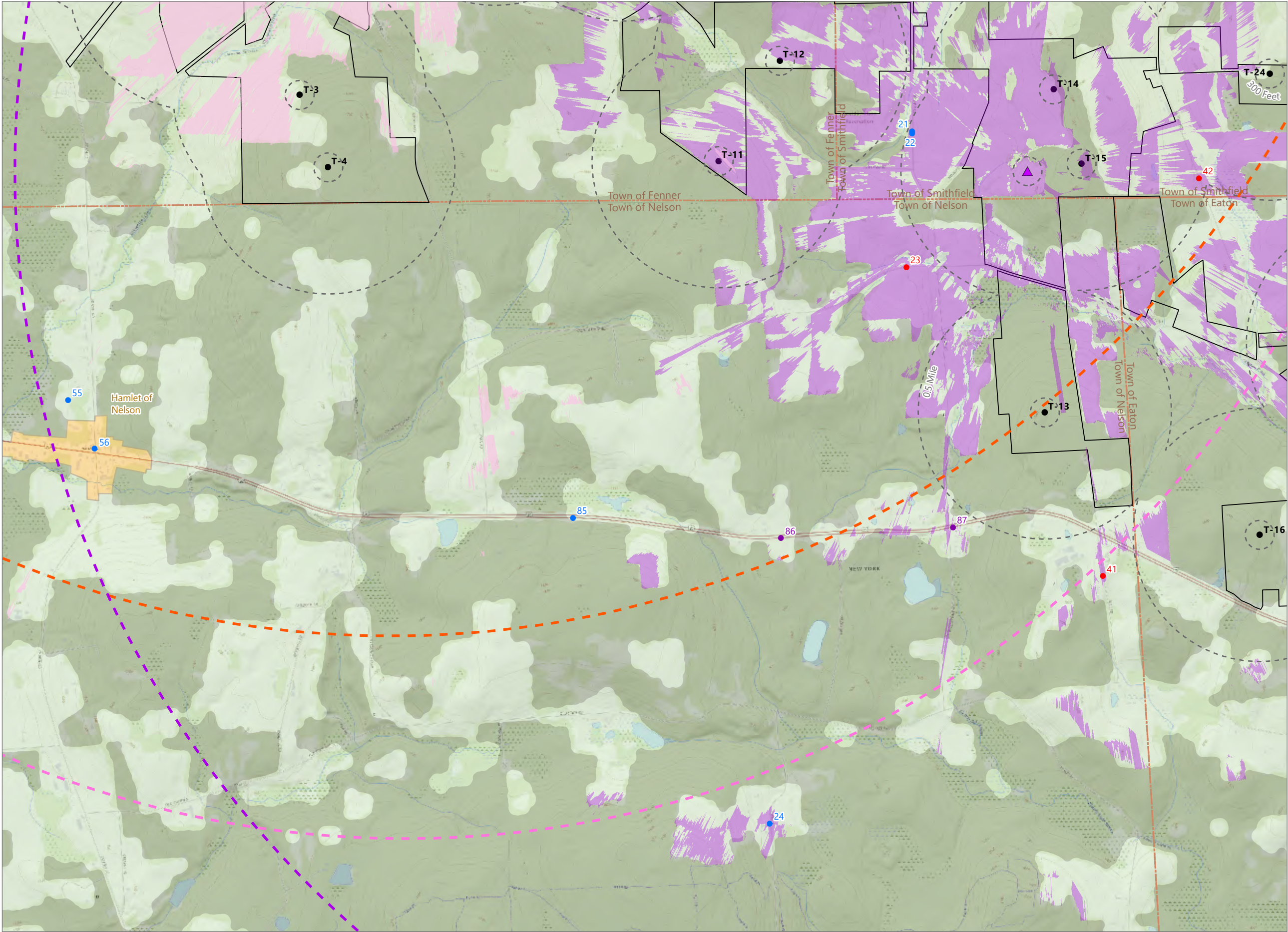
Sheet 7 of 15



*Sheets shown in grey in the sheet locator inset above are not included herein as they do not overlap the MET Tower/ADLS/Interconnection Facility Study Areas.



Scale: 1:24,000 Prepared May 23, 2024
Basemap: Esri "USGS Topo" map service



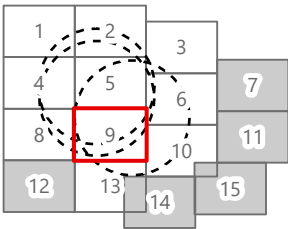
Hoffman Falls Wind Project

Towns of Eaton, Fenner, Nelson, and Smithfield,
Madison County, New York

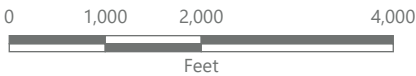
Visual Impact Assessment

- Viewpoint Location
- Simulation Viewpoint
- Supplemental Viewpoint
- Wind Turbine
- Potential ADLS Tower Visibility
- ADLS Tower 4-Mile Study Area
- MET Tower
- Potential MET Tower Visibility
- MET Tower 4-Mile Study Area
- Interconnection Facility 4-Mile Study Area
- Facility Site
- 5-Mile Study Area
- Landscape Similarity Zone
 - Agricultural/Rural Residential
 - Forest
 - Hamlet

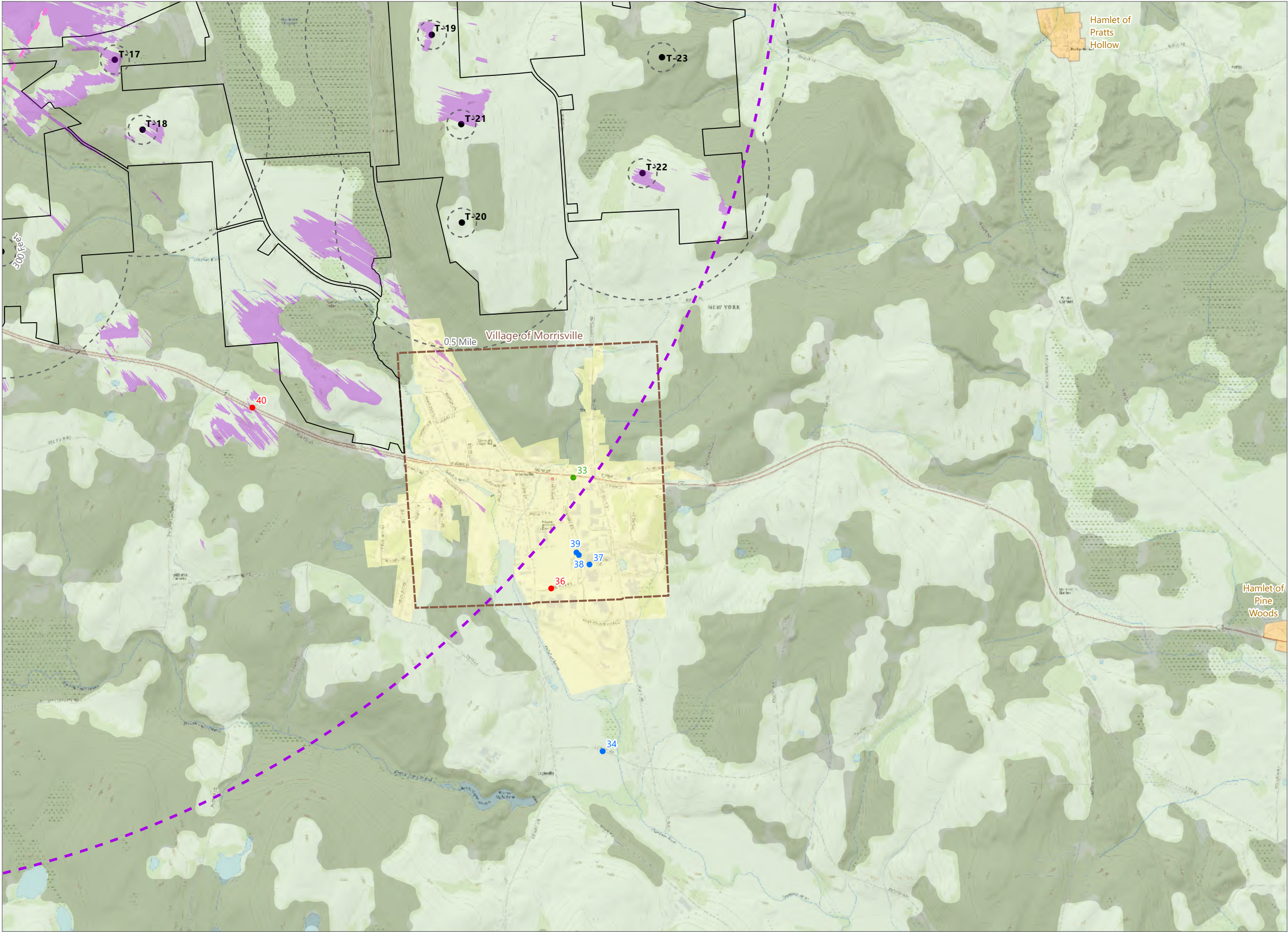
Sheet 8 of 15



*Sheets shown in grey in the sheet locator inset above are not included herein as they do not overlap the MET Tower/ADLS/Interconnection Facility Study Areas.



Scale: 1:24,000 Prepared May 23, 2024
Basemap: Esri "USGS Topo" map service



Hoffman Falls Wind Project

Towns of Eaton, Fenner, Nelson, and Smithfield, Madison County, New York

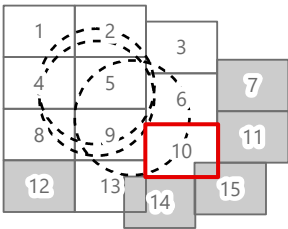
Visual Impact Assessment

- Viewpoint Location
- Wireframe Viewpoint
- Simulation Viewpoint
- Wind Turbine
- ADLS Tower 4-Mile Study Area
- Potential MET Tower Visibility
- MET Tower 4-Mile Study Area
- Facility Site
- 5-Mile Study Area

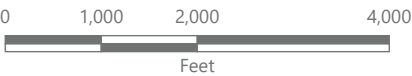
Landscape Similarity Zone

- Agricultural/Rural Residential
- Forest
- Hamlet
- Village

Sheet 9 of 15



*Sheets shown in grey in the sheet locator inset above are not included herein as they do not overlap the MET Tower/ADLS/Interconnection Facility Study Areas.



Scale: 1:24,000 Prepared May 23, 2024
Basemap: Esri "USGS Topo" map service

Hoffman Falls Wind Project

Towns of Eaton, Fenner, Nelson, and Smithfield,
Madison County, New York

Visual Impact Assessment

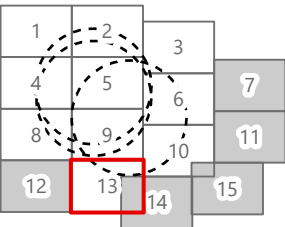
- Viewpoint Location
- Wireframe Viewpoint
- Potential MET Tower Visibility
- MET Tower 4-Mile Study Area
- 5-Mile Study Area

Landscape Similarity Zone

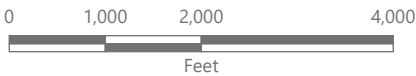
- Agricultural/Rural Residential
- Forest
- Water



Sheet 10 of 15



*Sheets shown in grey in the sheet locator inset above are not included herein as they do not overlap the MET Tower/ADLS/Interconnection Facility Study Areas.



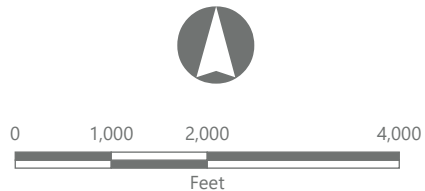
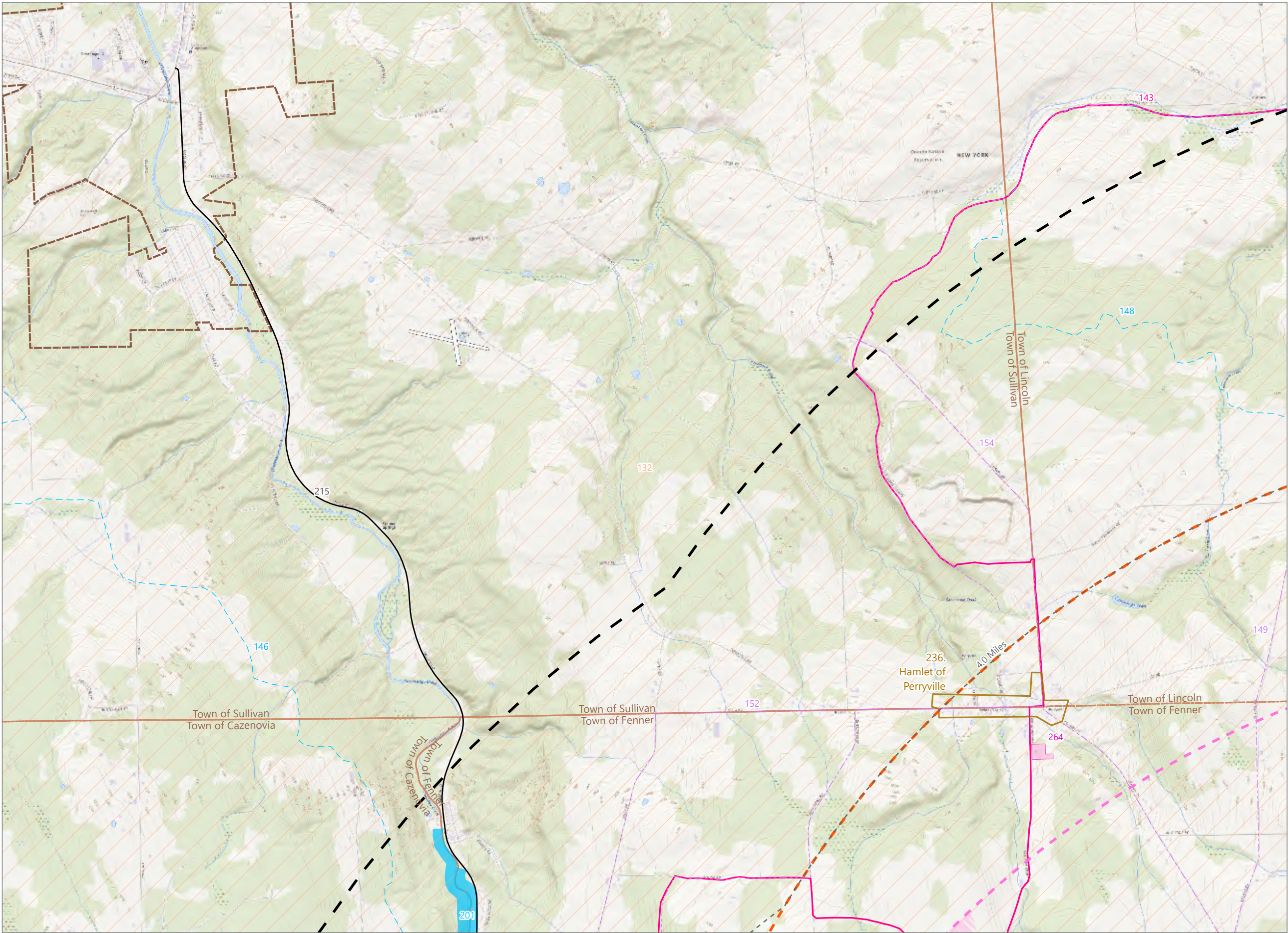
Scale: 1:24,000 Prepared May 23, 2024
Basemap: Esri "USGS Topo" map service

Hoffman Falls Wind Project

Towns of Eaton, Fenner, Nelson, and Smithfield,
Madison County, New York

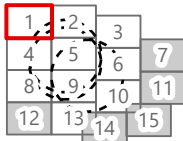
Visual Impact Assessment

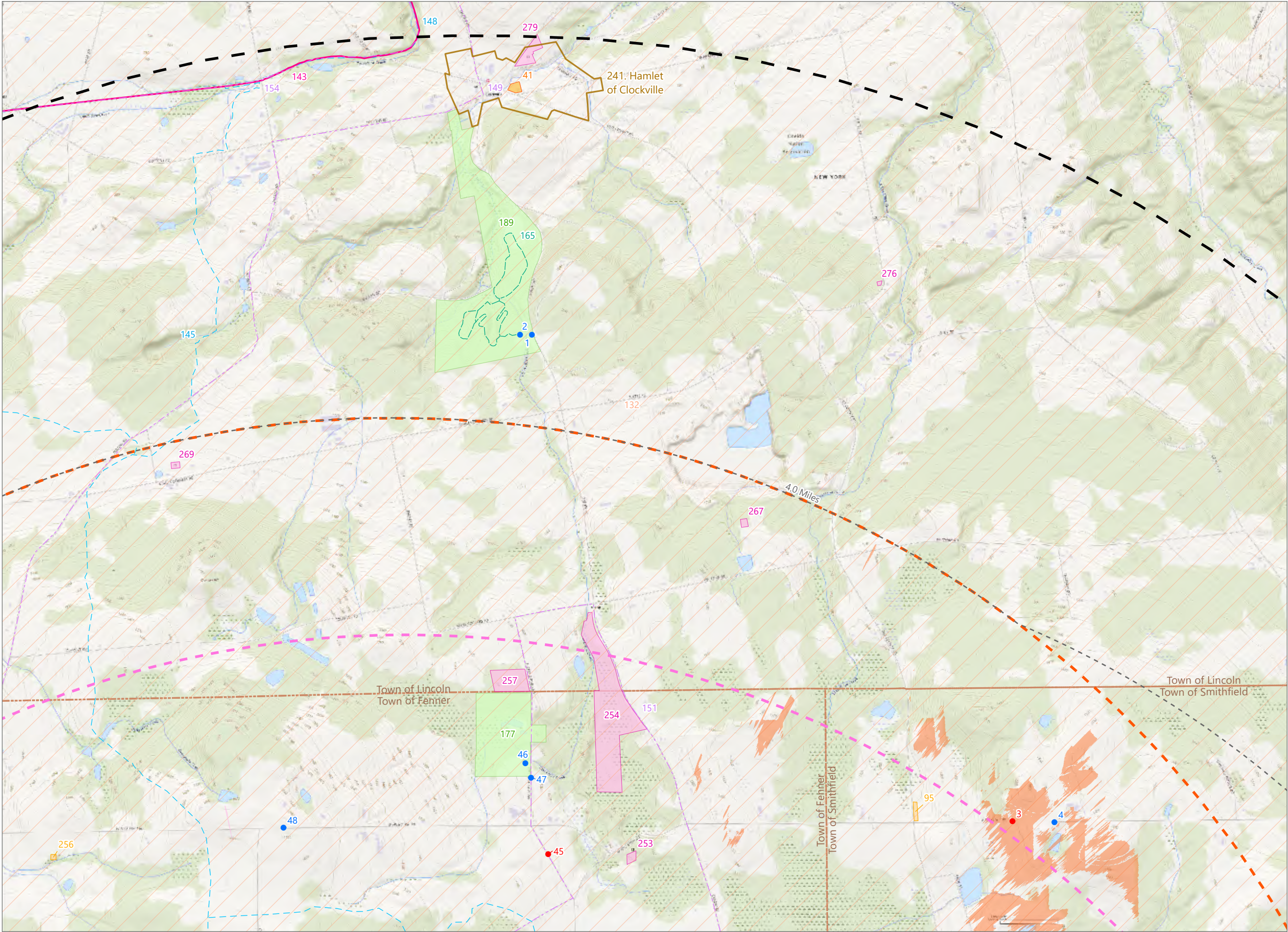
- Potential ADLS Tower Visibility
- ADLS Tower 4-Mile Study Area
- Interconnection Facility 4-Mile Study Area
- 5-Mile Study Area
- Visually Sensitive Resources
 - Snowmobile Trail
 - State or Federal Trail
 - Bike Trail
 - State, US, or Interstate Highway
 - River or Stream with Public Fishing Rights Easement
 - Erie Canalway National Heritage Corridor
 - Stakeholder Identified Resource
 - Hamlet



Scale: 1:24,000
Prepared May 23, 2024
Basemap: Esri "USGS Topo" map service

Sheet 1 of 15



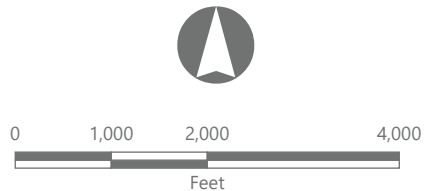


Hoffman Falls Wind Project

Towns of Eaton, Fenner, Nelson, and Smithfield,
Madison County, New York

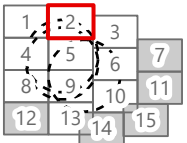
Visual Impact Assessment

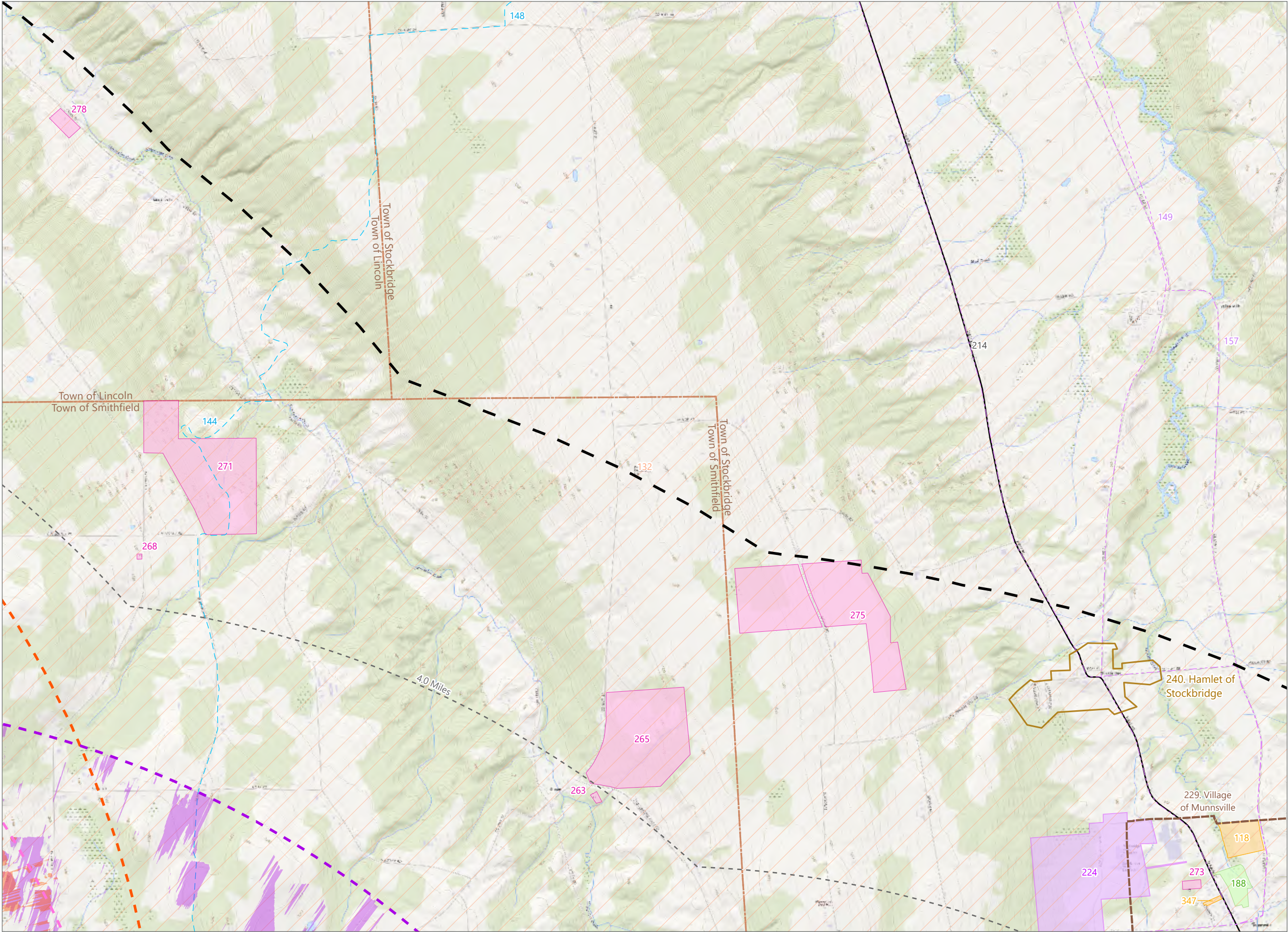
- Viewpoint Location
- Simulation Viewpoint
- Potential ADLS Tower Visibility
- ADLS Tower 4-Mile Study Area
- Potential Interconnection Facility Visibility
- Interconnection Facility 4-Mile Study Area
- 5-Mile Study Area
- Visually Sensitive Resources
 - Snowmobile Trail
 - State or Federal Trail
 - Bike Trail
 - Other Trail
 - NRHP-Listed Resource
 - NRHP-Eligible Resource
 - Erie Canalway National Heritage Corridor
 - Local Park or Recreation Area
 - Stakeholder Identified Resource
 - Hamlet



Scale: 1:24,000
Prepared May 23, 2024
Basemap: Esri "USGS Topo" map service

Sheet 2 of 15



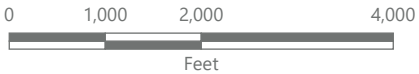


Hoffman Falls Wind Project

Towns of Eaton, Fenner, Nelson,
and Smithfield,
Madison County, New York

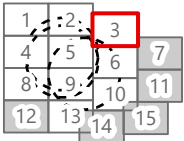
Visual Impact Assessment

- ADLS Tower 4-Mile Study Area
- Potential MET Tower Visibility
- MET Tower 4-Mile Study Area
- Potential Interconnection Facility Visibility
- Interconnection Facility 4-Mile Study Area
- 5-Mile Study Area
- Visually Sensitive Resources
- Snowmobile Trail
- Bike Trail
- State, US, or Interstate Highway
- NRHP-Eligible Resource
- Erie Canalway National Heritage Corridor
- Local Park or Recreation Area
- Stakeholder Identified Resource
- School
- Hamlet
- Village



Scale: 1:24,000
Prepared May 23, 2024
Basemap: Esri "USGS Topo" map
service

Sheet 3 of 15

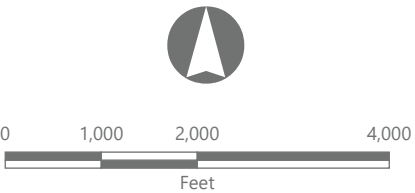


Hoffman Falls Wind Project

Towns of Eaton, Fenner, Nelson, and Smithfield,
Madison County, New York

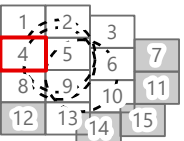
Visual Impact Assessment

- Viewpoint Location
- Simulation Viewpoint
- Potential ADLS Tower Visibility
- ADLS Tower 4-Mile Study Area
- MET Tower 4-Mile Study Area
- Potential Interconnection Facility Visibility
- Interconnection Facility 4-Mile Study Area
- 5-Mile Study Area
- Visually Sensitive Resources
 - Snowmobile Trail
 - State or Federal Trail
 - Bike Trail
 - Other Trail
 - State, US, or Interstate Highway
 - River or Stream with Public Fishing Rights Easement
 - NRHP-Listed Resource
 - NRHP-Eligible Resource
 - State Park
 - State Fishing or Waterway Access Site
 - Erie Canalway National Heritage Corridor
 - Publicly Accessible Conservation Land or Easement
 - Named Lake, Pond, or Reservoir
 - Stakeholder Identified Resource



Sheet 4 of 15

Scale: 1:24,000
Prepared May 23, 2024
Basemap: Esri "USGS Topo" map service



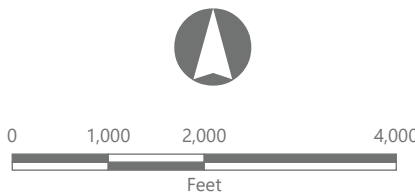
EDR

Hoffman Falls Wind Project

Towns of Eaton, Fenner, Nelson, and Smithfield,
Madison County, New York

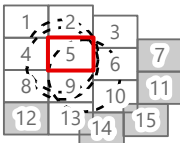
Visual Impact Assessment

- Viewpoint Location
- Simulation Viewpoint
- Supplemental Viewpoint
- Wind Turbine
- ADLS Tower
- Potential ADLS Tower Visibility
- ADLS Tower 4-Mile Study Area
- Potential MET Tower Visibility
- MET Tower 4-Mile Study Area
- POI Substation
- Collection Substation
- Potential Interconnection Facility Visibility
- Interconnection Facility 4-Mile Study Area
- O&M Building
- Facility Site
- 5-Mile Study Area
- Visually Sensitive Resources
 - Snowmobile Trail
 - Bike Trail
 - National Historic Landmark
 - NRHP-Listed Resource
 - NRHP-Eligible Resource
 - Erie Canalway National Heritage Corridor
 - Local Park or Recreation Area
 - Stakeholder Identified Resource
 - Hamlet

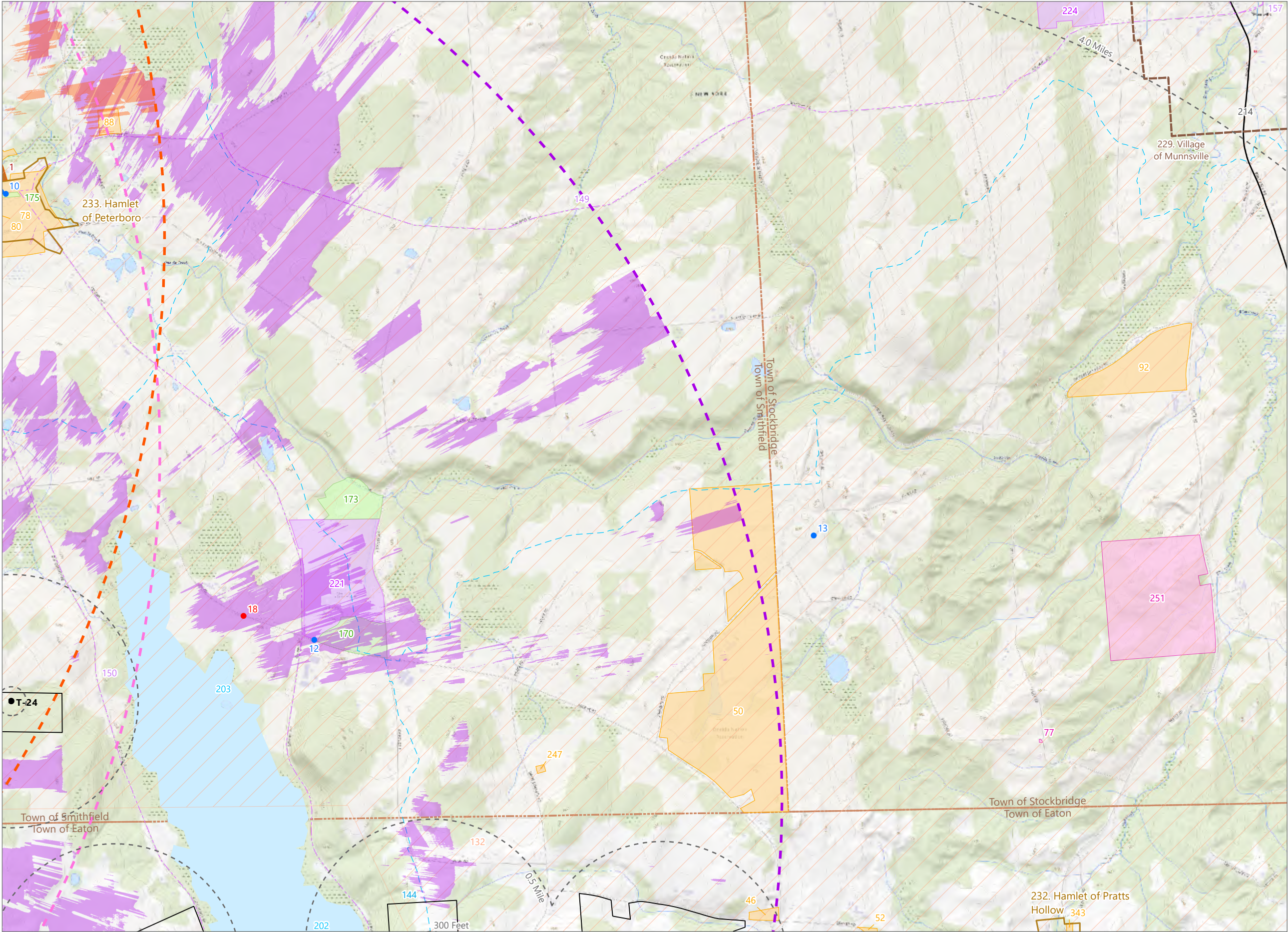


Scale: 1:24,000
Prepared May 23, 2024
Basemap: Esri "USGS Topo" map service

Sheet 5 of 15



EDR

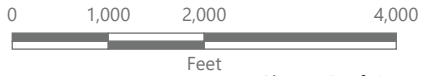


Hoffman Falls Wind Project

Towns of Eaton, Fenner, Nelson, and Smithfield,
Madison County, New York

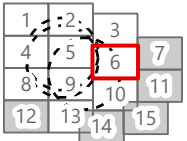
Visual Impact Assessment

- Viewpoint Location
- Simulation Viewpoint
- Wind Turbine
- ADLS Tower 4-Mile Study Area
- Potential MET Tower Visibility
- MET Tower 4-Mile Study Area
- Potential Interconnection Facility Visibility
- Interconnection Facility 4-Mile Study Area
- Facility Site
- 5-Mile Study Area
- Visually Sensitive Resources
- Snowmobile Trail
- Bike Trail
- State, US, or Interstate Highway
- National Historic Landmark
- NRHP-Listed Resource
- NRHP-Eligible Resource
- Erie Canalway National Heritage Corridor
- Local Park or Recreation Area
- Named Lake, Pond, or Reservoir
- Stakeholder Identified Resource
- School
- Hamlet
- Village

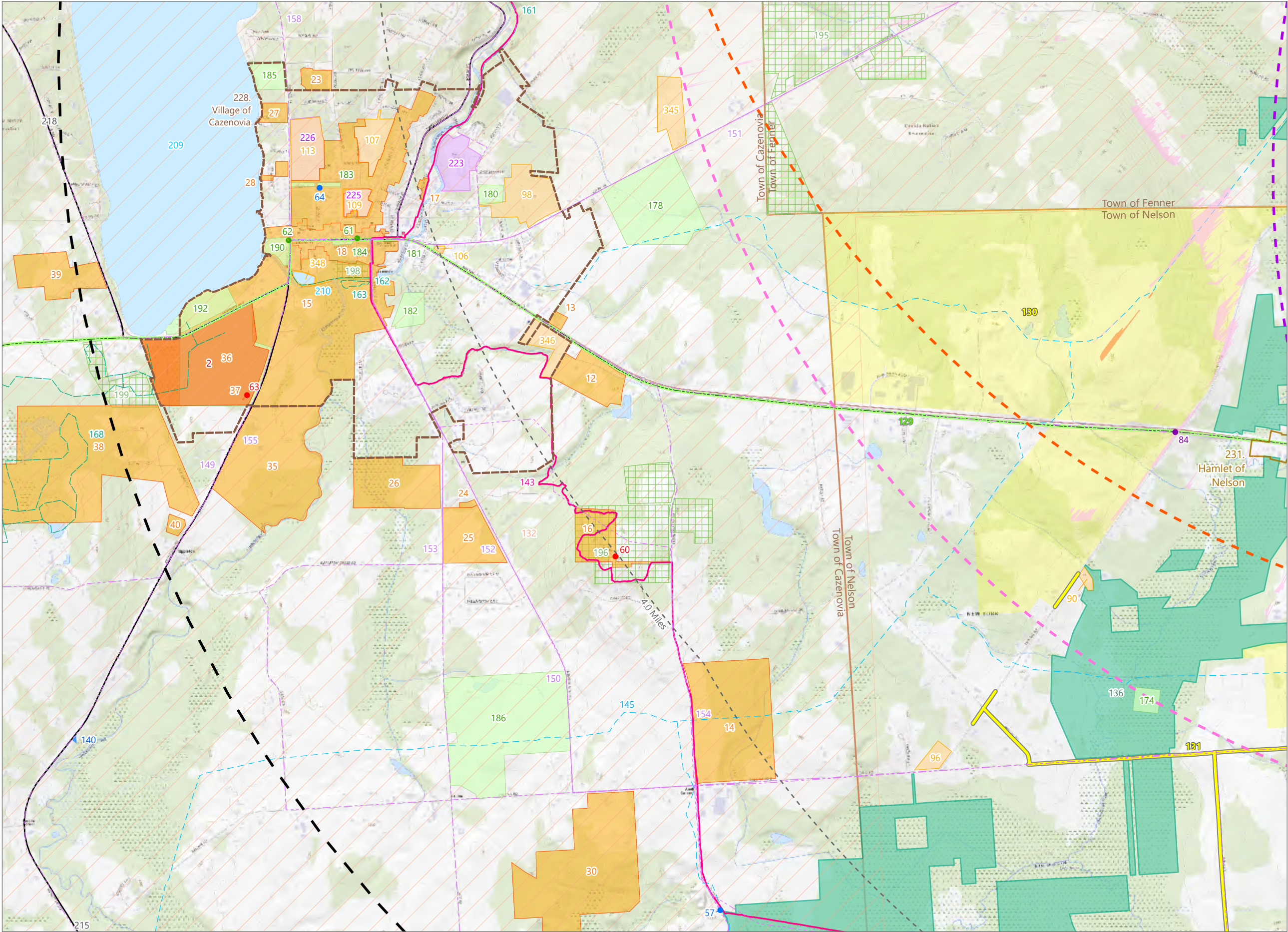


Sheet 6 of 15

Scale: 1:24,000
Prepared May 23, 2024
Basemap: Esri "USGS Topo" map service



EDR



Hoffman Falls Wind Project

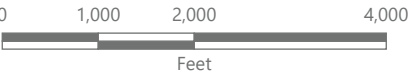
Towns of Eaton, Fenner, Nelson, and Smithfield, Madison County, New York

Visual Impact Assessment

- Viewpoint Location
- Wireframe Viewpoint
- Simulation Viewpoint
- Supplemental Viewpoint
- Potential ADLS Tower Visibility
- ADLS Tower 4-Mile Study Area
- MET Tower 4-Mile Study Area
- Potential Interconnection Facility Visibility
- Interconnection Facility 4-Mile Study Area
- 5-Mile Study Area

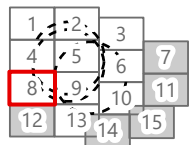
Visually Sensitive Resources

- Snowmobile Trail
- State or Federal Trail
- Scenic Byway
- Scenic Roadway
- Bike Trail
- Other Trail
- State, US, or Interstate Highway
- State Historic Site
- NRHP-Listed Resource
- NRHP-Eligible Resource
- State Unique Area
- State Fishing or Waterway Access Site
- Scenic Overlay District
- Erie Canalway National Heritage Corridor
- Publicly Accessible Conservation Land or Easement
- Local Park or Recreation Area
- Named Lake, Pond, or Reservoir
- School
- Hamlet
- Village

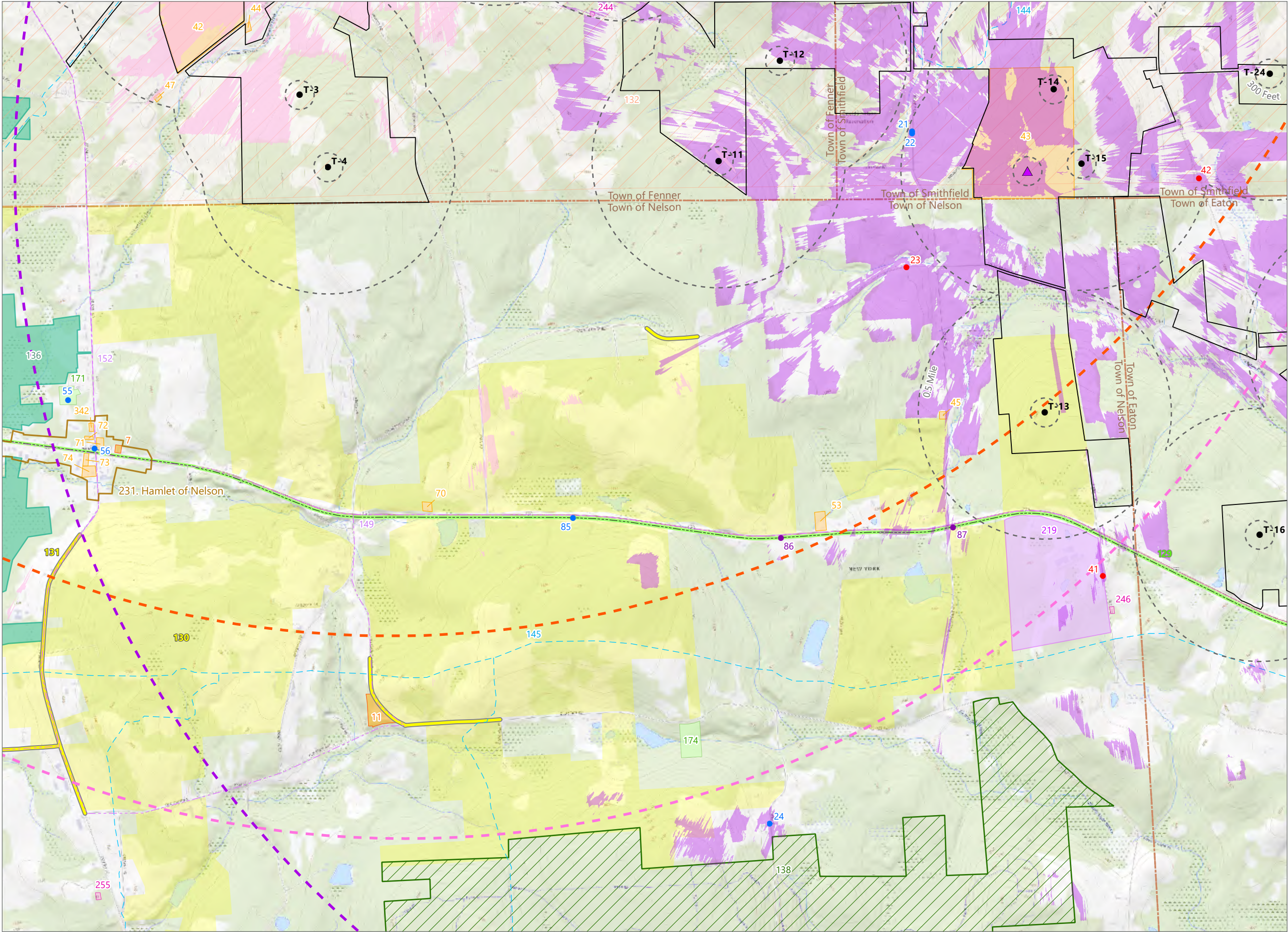


Scale: 1:24,000
Prepared May 23, 2024
Basemap: Esri "USGS Topo" map service

Sheet 8 of 15



EDR

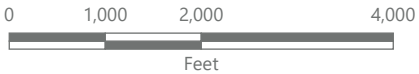


Hoffman Falls Wind Project

Towns of Eaton, Fenner, Nelson, and Smithfield, Madison County, New York

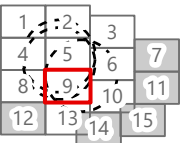
Visual Impact Assessment

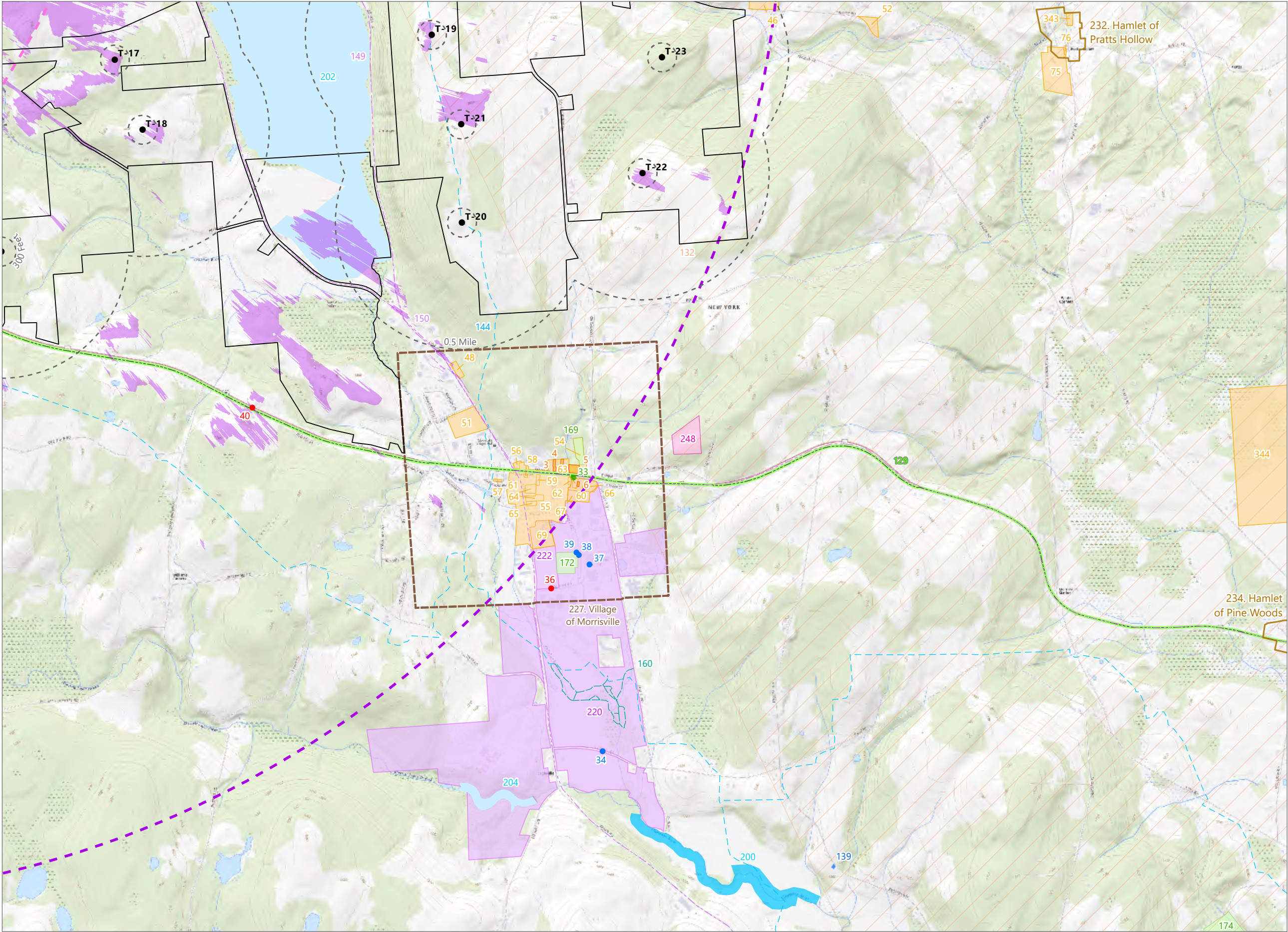
- Viewpoint Location
- Simulation Viewpoint
- Supplemental Viewpoint
- Wind Turbine
- Potential ADLS Tower Visibility
- ADLS Tower 4-Mile Study Area
- MET Tower
- Potential MET Tower Visibility
- MET Tower 4-Mile Study Area
- Interconnection Facility 4-Mile Study Area
- Facility Site
- 5-Mile Study Area
- Visually Sensitive Resources
 - Snowmobile Trail
 - Scenic Byway
 - Scenic Roadway
 - Bike Trail
 - NRHP-Listed Resource
 - NRHP-Eligible Resource
 - State Forest
 - State Unique Area
 - Scenic Overlay District
 - Erie Canalway National Heritage Corridor
 - Local Park or Recreation Area
 - Stakeholder Identified Resource
 - School
 - Hamlet



Sheet 9 of 15

Scale: 1:24,000
Prepared May 23, 2024
Basemap: Esri "USGS Topo" map service



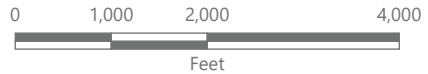


Hoffman Falls Wind Project

Towns of Eaton, Fenner, Nelson, and Smithfield,
Madison County, New York

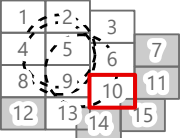
Visual Impact Assessment

- Viewpoint Location
- Wireframe Viewpoint
- Simulation Viewpoint
- Wind Turbine
- ADLS Tower 4-Mile Study Area
- Potential MET Tower Visibility
- MET Tower 4-Mile Study Area
- Facility Site
- 5-Mile Study Area
- Visually Sensitive Resources
 - Snowmobile Trail
 - Scenic Byway
 - Bike Trail
 - Other Trail
 - River or Stream with Public Fishing Rights Easement
 - NRHP-Listed Resource
 - NRHP-Eligible Resource
 - State Fishing or Waterway Access Site
 - Erie Canalway National Heritage Corridor
 - Local Park or Recreation Area
 - Named Lake, Pond, or Reservoir
 - Stakeholder Identified Resource
 - School
 - Hamlet
 - Village



Sheet 10 of 15

Scale: 1:24,000
Prepared May 23, 2024
Basemap: Esri "USGS Topo" map service

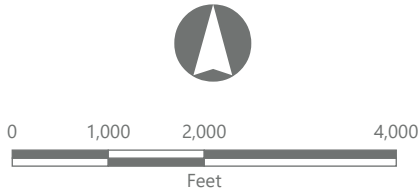
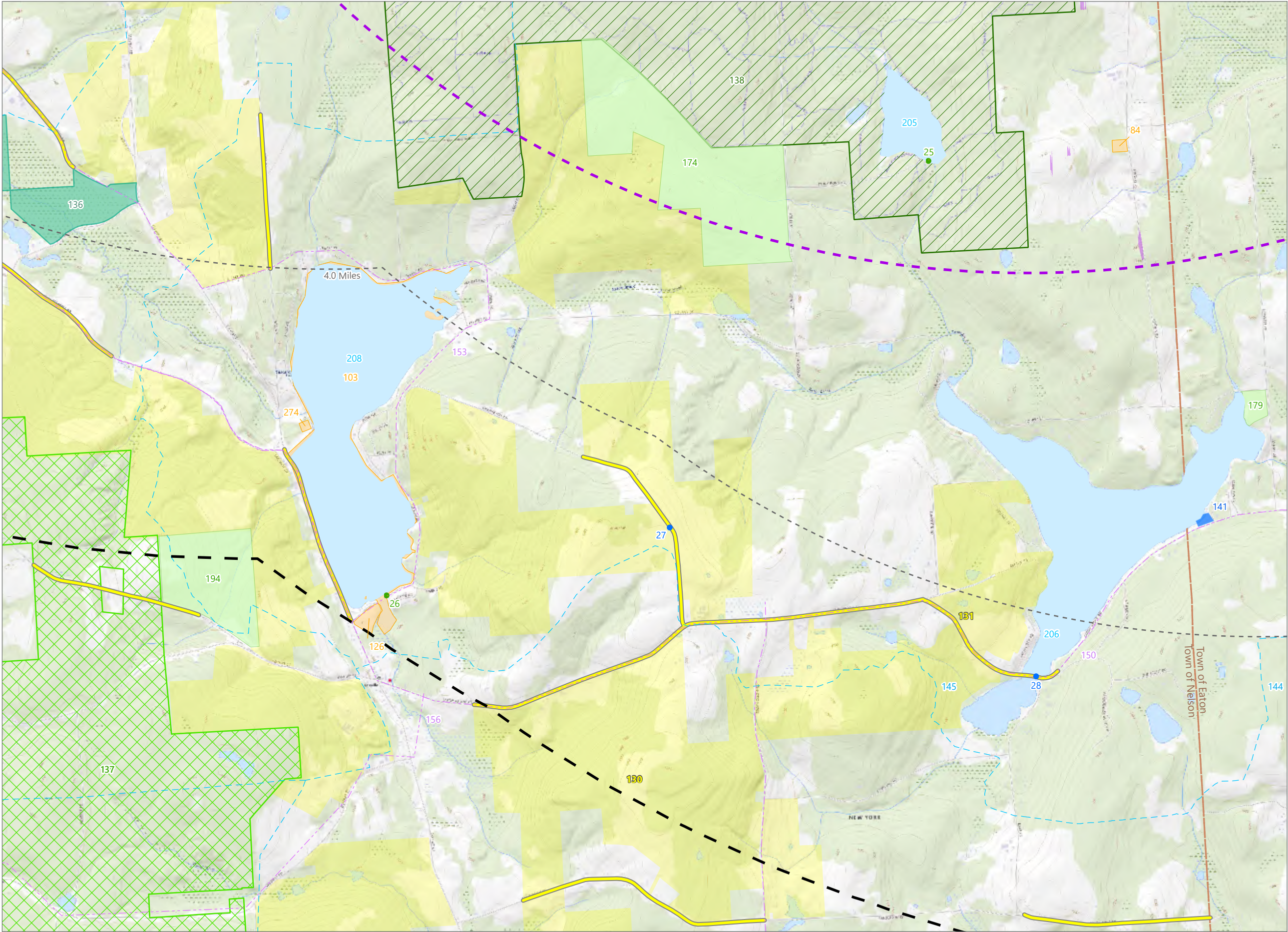


Hoffman Falls Wind Project

Towns of Eaton, Fenner, Nelson, and Smithfield,
Madison County, New York

Visual Impact Assessment

- Viewpoint Location
- Wireframe Viewpoint
- Potential MET Tower Visibility
- MET Tower 4-Mile Study Area
- 5-Mile Study Area
- Visually Sensitive Resources
 - Snowmobile Trail
 - Scenic Roadway
 - Bike Trail
 - NRHP-Eligible Resource
 - State Forest
 - State Unique Area
 - Wildlife Management Area
 - State Fishing or Waterway Access Site
 - Scenic Overlay District
 - Local Park or Recreation Area
 - Named Lake, Pond, or Reservoir



Scale: 1:24,000
Prepared May 23, 2024
Basemap: Esri "USGS Topo" map service

Sheet 13 of 15

