

REVISED PHOTOSIMULATION



Note: Printed at actual size, the resulting simulation image is 15 inches wide by 10 inches high. At this size and focal length, the simulation should be viewed from a distance 21 inches from the eye of the viewer.

0 1 in 2 in
This scale is designed to insure the simulation images are printed at the intended size.

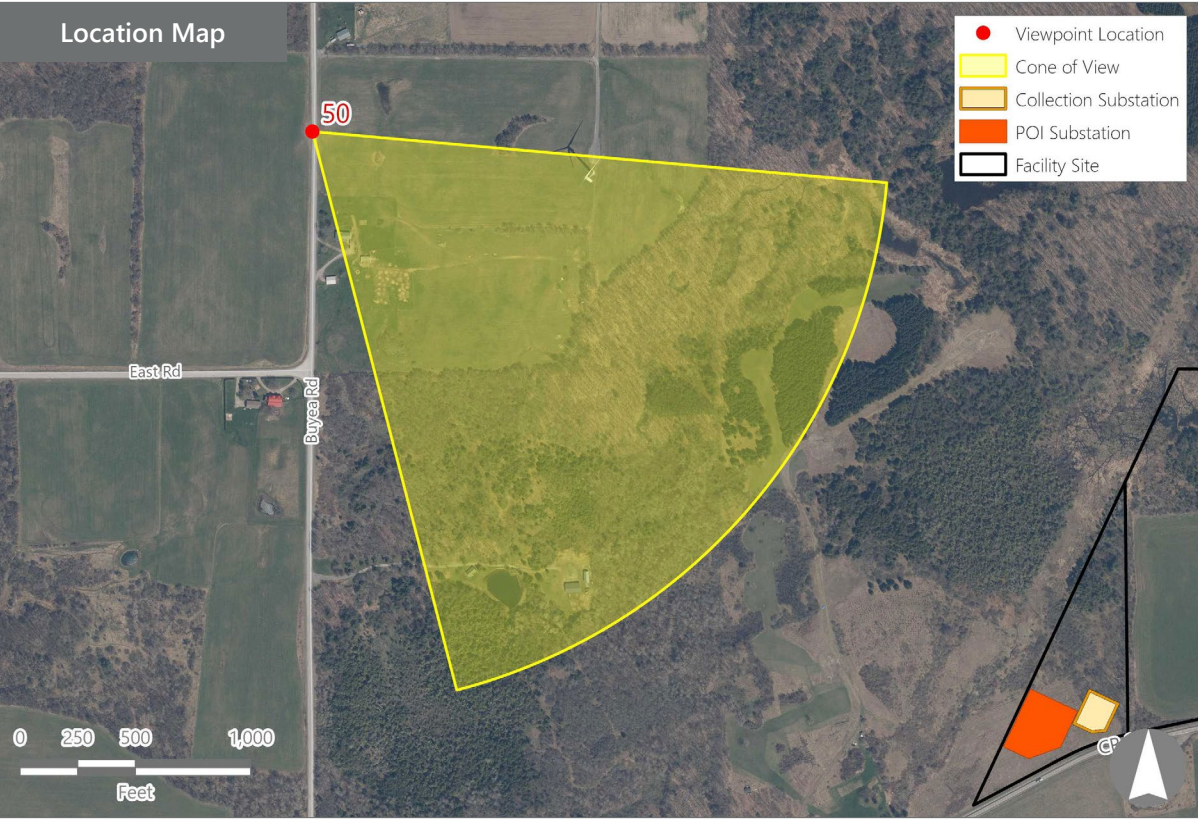
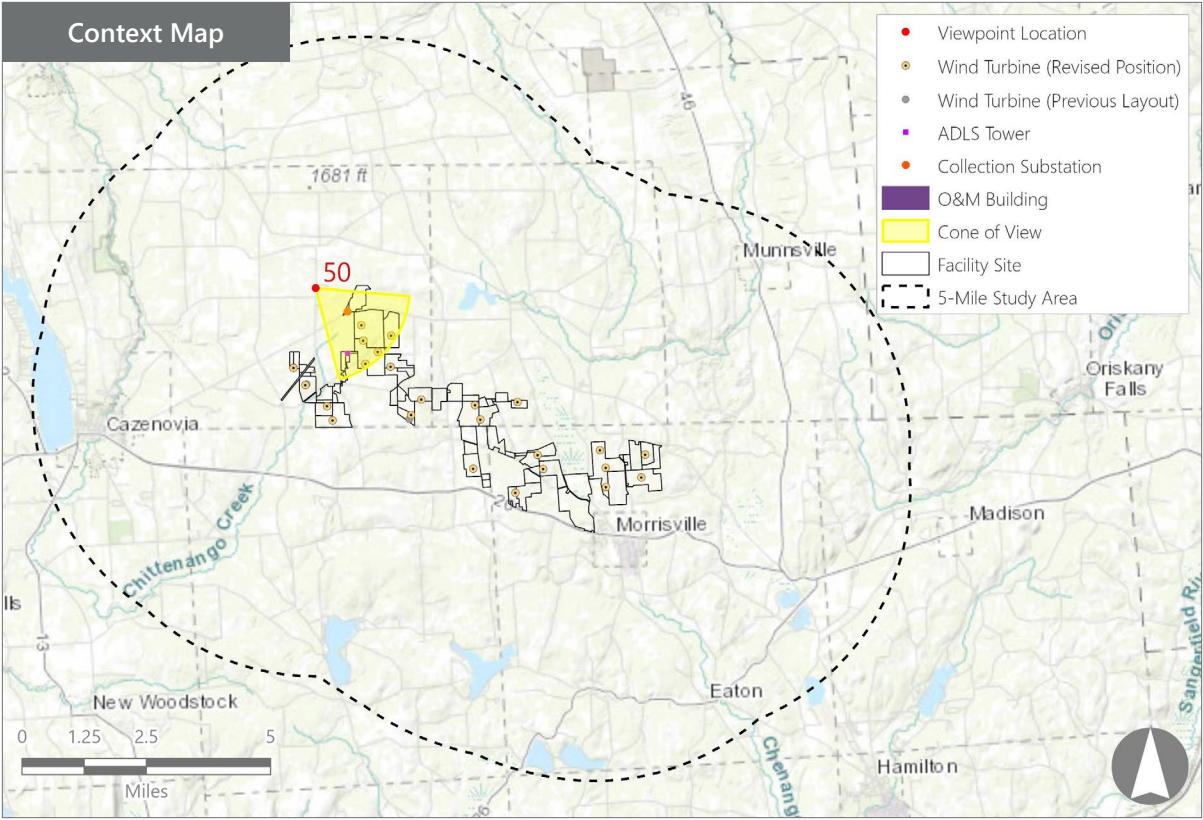
VIEWPOINT 45
Nichols Pond Road

Hoffman Falls Wind Project
Towns of Eaton, Fenner, Nelson, and Smithfield, Madison County, New York





Note: The image above is a panorama photograph taken from Buyea Road in the Town of Fenner panning clockwise from east (left) to southwest (right). The green rectangle represents the extent of the simulated photograph.



VIEWPOINT 50
Buyea Road

VIEWPOINT INFORMATION

Location: Buyea Road
Town: Fenner
County: Madison
Latitude: 42.97202° N
Longitude: 75.76444° W

LOCATION INFORMATION

Distance Zone Represented in View: Middle Ground
Viewer Distance*: 1.2 miles
Landscape Similarity Zone: Agricultural/Rural Residential
Viewer/User Group(s): Local Residents, Tourists/Recreational Users

Visually Sensitive Resource(s): Snow Valley Riders Snowmobile Trail, Erie Canalway National Heritage Corridor

PHOTOGRAPH INFORMATION

Date: August 31, 2023
Time: 3:56 PM
Camera: Canon EOS 5D Mark IV
Resolution: 24 Megapixels
Lens Focal Length (35mm equivalent): 50 mm
Camera Elevation: 1,701 feet
Field of View: 39 degrees
Direction of View: Southeast
Printed Size: 10" x 15"
Viewing Distance:** 21"

NOTES

*Distance as measured from the viewpoint to the closest wind turbine generator within the simulated photograph's field of view

**The simulation is at the correct perspective when printed on an 11 inch by 17 inch sheet at full scale, and viewed approximately 21 inches from the eye of the viewer.

Hoffman Falls Wind Project
Towns of Eaton, Fenner, Nelson, and Smithfield, Madison County, New York

Viewpoint Sensitivity¹:

- Scenic Quality:
☐ Low
☒ Moderate
☒ High
- Viewer Exposure
Frequency:
☐ Rare
☒ Occasional
☒ Regular/Repeated
- Duration of View:
☒ Short/Brief/Fleeting
☒ Moderate
☐ Long

¹Viewpoint Sensitivity information is gathered from rating panel results. Scenic Quality is an average based on Low = 1, Moderate = 2, High = 3. Viewer Exposure reflects all those selected be the review panel.

Contrast Rating Scores²:

Component	Score	Contrast Rating
	Install	
Landform	1.7	Minimal/Moderate
Vegetation	1.7	Minimal/Moderate
Land Use	2.0	Moderate
Water	N/A	N/A
Sky	2.7	Moderate/Appreciable
Viewer Activity	2.0	Moderate
AVERAGE	2.0	Moderate

² Contrast Rating Scale: 0.0 - 0.2 (Insignificant), 0.3 – 0.7 (Insignificant/Minimal), 0.8 – 1.2 (Minimal), 1.3 – 1.7 (Minimal/Moderate), 1.8 - 2.2 (Moderate), 2.3 – 2.7 (Moderate/Appreciable), 2.8 – 3.2 (Appreciable) 3.3 – 3.7 Appreciable/Strong), 3.8 – 4.0 (Strong).

Contrast Rating - Lowest and Highest Scores:

Post - Install		
Component	Score	
	Low	High
Landform	0.5	3.0
Vegetation	0.5	3.0
Land Use	1.0	3.0
Water	NA	NA
Sky	2.0	3.0
Viewer Activity	1.5	3.0

Existing View



Proposed View (Post Installation)



Existing View

Viewpoint 50 is located on Buyea Road in the Town of Fenner, approximately 1.2 miles from the nearest proposed wind turbine that would be visible in the selected photograph’s field of view. This viewpoint occurs in the Agricultural/Rural Residential LSZ and is typical of views available to local residents and recreational users of bike and snowmobile trails in the area. These views feature a gently rolling rural landscape comprised of large open fields, woodlots, and scattered farms, homes, and wind turbines. The selected photos present a panorama in which a section of Buyea Road is visible in the immediate foreground along the right edge of the view. The far left of the existing southeast view includes an open agricultural field that rises in a gentle undulating fashion from the immediate foreground to a middle ground hilltop where a large wind turbine flanked on both sides by patches of forest vegetation extends into the sky. The rolling topography slopes gently toward scattered farm equipment and decorative trees that edge an agricultural/residential lot backed by fields and a hedgerow that gently rise to more distant residential yards and a densely vegetated horizon line. Due to its proximity to the viewer, the turbine’s large size and details of its form are clearly visible as is the lattice work of a nearby communication tower. The turbines white color and the motion of its rotor blades make this turbine a dominant focal point in the view. The rolling topography and background vegetation enclose the view and block views of more distant landscape features. The rating panel indicated that the existing view was well composed and visually interesting, resulting in moderate to high scenic quality.

Proposed View

With the proposed Facility in place, additional more distant wind turbines are now visible across much of the horizon. The new turbines are located beyond the crest of the hill which screens visibility to lower portions the turbine towers. Although the new turbines appear as an extension of the existing Facility, the quantity of additional turbines increases the intensity of development in the view. Their vertical line and angular form contrasts with the overall horizontality and rolling forms of the existing landscape, and they add visual clutter to the horizon. However, open agricultural fields and woodlots throughout the view maintain the existing rural agricultural character, and the new turbines do not appear out of character or scale with the working agricultural landscape that already includes wind turbines. However, the spread of turbines across the horizon now makes wind energy generation a more dominant land use. According to the rating panel, the addition of the new turbines may somewhat reduce the scenic quality of the view but could also add visual interest for some viewers.

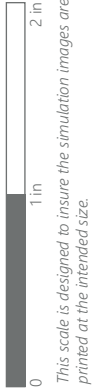
Hoffman Falls Wind Project

Towns of Eaton, Fenner, Nelson, and Smithfield, Madison County, New York



EXISTING VIEW

Note: Printed at actual size, the existing view image is 15 inches wide by 10 inches high. At this size and focal length, the existing view image should be viewed from a distance 21 inches from the eye of the viewer.



VIEWPOINT 50
Buyea Road

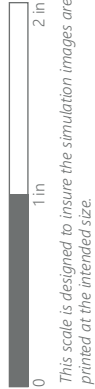
Hoffman Falls Wind Project
Towns of Eaton, Fenner, Nelson, and Smithfield, Madison County, New York





PHOTOSIMULATION

Note: Printed at actual size, the resulting simulation image is 15 inches wide by 10 inches high. At this size and focal length, the simulation should be viewed from a distance 21 inches from the eye of the viewer.



VIEWPOINT 50
Buyea Road

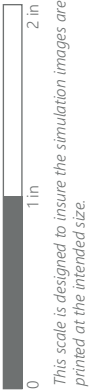
Hoffman Falls Wind Project
Towns of Eaton, Fenner, Nelson, and Smithfield, Madison County, New York



EXISTING VIEW



Note: Printed at actual size, the existing view image is 15 inches wide by 10 inches high. At this size and focal length, the existing view image should be viewed from a distance 21 inches from the eye of the viewer.



VIEWPOINT 50
Buyea Road

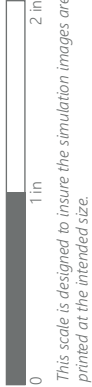
Hoffman Falls Wind Project
Towns of Eaton, Fenner, Nelson, and Smithfield, Madison County, New York



PHOTOSIMULATION



Note: Printed at actual size, the resulting simulation image is 15 inches wide by 10 inches high. At this size and focal length, the simulation should be viewed from a distance 21 inches from the eye of the viewer.



VIEWPOINT 50
Buyea Road

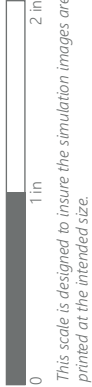
Hoffman Falls Wind Project
Towns of Eaton, Fenner, Nelson, and Smithfield, Madison County, New York



REVISED PHOTOSIMULATION



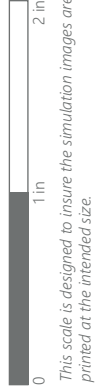
Note: Printed at actual size, the resulting simulation image is 15 inches wide by 10 inches high. At this size and focal length, the simulation should be viewed from a distance 21 inches from the eye of the viewer.



VIEWPOINT 50
Buyea Road

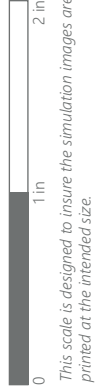
Hoffman Falls Wind Project
Towns of Eaton, Fenner, Nelson, and Smithfield, Madison County, New York





VIEWPOINT 50
Buyea Road





VIEWPOINT 50
Buyea Road



Note: The image above is a panorama photograph taken from South Road in the Town of Fenner panning clockwise from east (left) to southwest (right). The green rectangle represents the extent of the simulated photograph.

VIEWPOINT 54
South Road

VIEWPOINT INFORMATION

Location: South Road

Town: Fenner

County: Madison

Latitude: 42.94408° N

Longitude: 75.76462° W

LOCATION INFORMATION

Distance Zone Represented in View: Foreground

Viewer Distance*: 0.5 mile

Landscape Similarity Zone: Agricultural/Rural
Residential

Viewer/User Group(s): Local Residents

Visually Sensitive Resource(s): Erie Canalway
National Heritage Corridor

PHOTOGRAPH INFORMATION

Date: August 31, 2023

Time: 4:28 PM

Camera: Canon EOS 5D Mark IV

Resolution: 24 Megapixels

Lens Focal Length (35mm equivalent): 50 mm

Camera Elevation: 1,596 feet

Field of View: 39 degrees

Direction of View: South-southeast

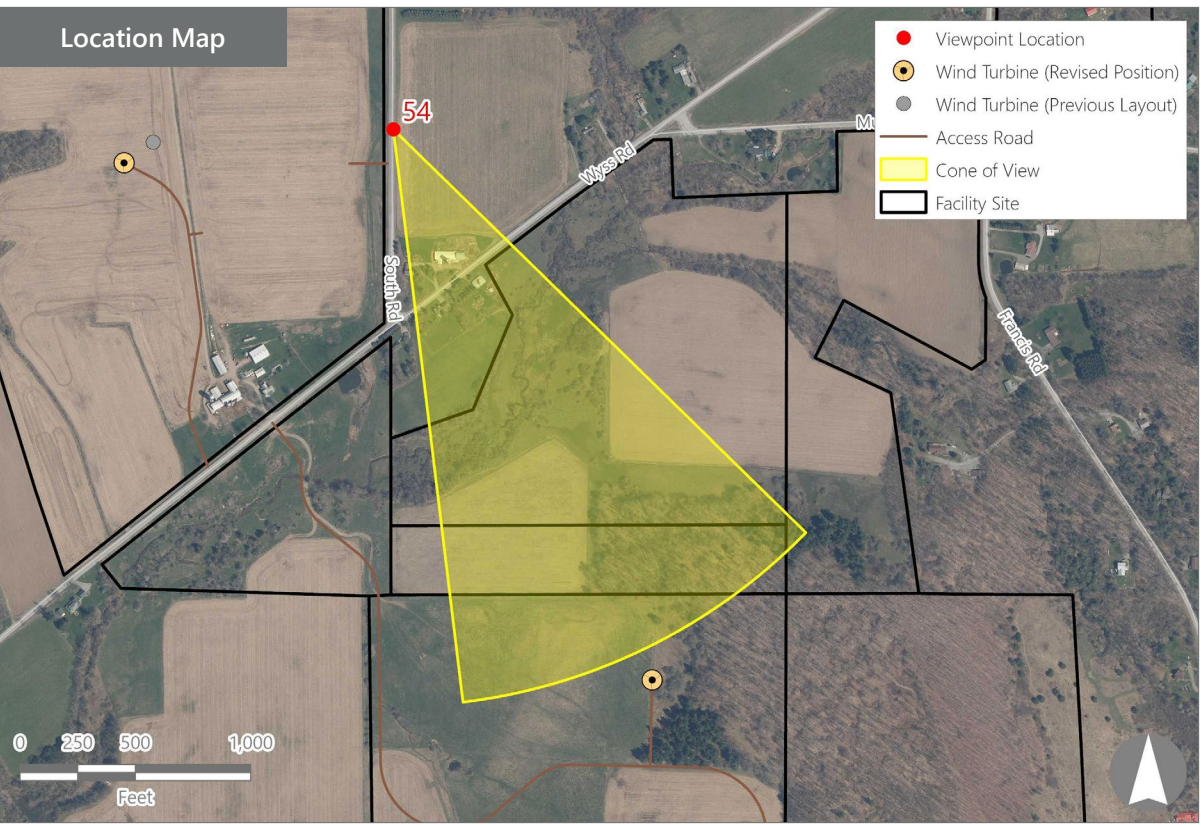
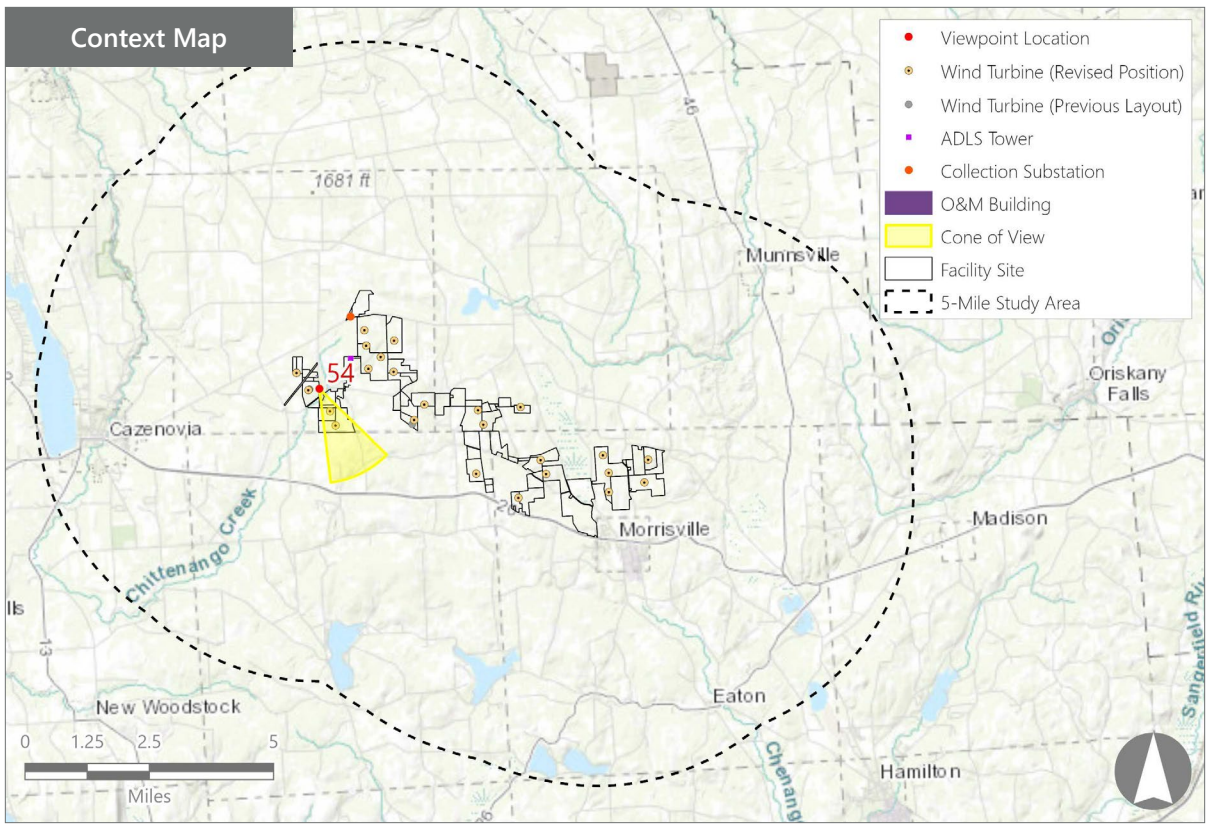
Printed Size: 10" x 15"

Viewing Distance:** 21"

NOTES

*Distance as measured from the viewpoint to the closest wind turbine generator within the simulated photograph's field of view

**The simulation is at the correct perspective when printed on an 11 inch by 17 inch sheet at full scale, and viewed approximately 21 inches from the eye of the viewer.



Hoffman Falls Wind Project

Towns of Eaton, Fenner, Nelson, and Smithfield, Madison County, New York

Visual Impact Assessment Addendum
Appendix 8-A

Viewpoint Sensitivity¹:

Scenic Quality:

- ☐ Low
- ☐ Moderate
- ☒ High

Viewer Exposure

Frequency:

- ☒ Rare
- ☒ Occasional
- ☒ Regular/Repeated

Duration of View:

- ☒ Short/Brief/Fleeting
- ☐ Moderate
- ☒ Long

¹Viewpoint Sensitivity information is gathered from rating panel results. Scenic Quality is an average based on Low = 1, Moderate = 2, High = 3. Viewer Exposure reflects all those selected by the review panel.

Contrast Rating Scores²:

Component	Score	Contrast Rating
	Install	
Landform	3.0	Appreciable
Vegetation	2.8	Appreciable
Land Use	2.8	Appreciable
Water	N/A	N/A
Sky	3.2	Appreciable
Viewer Activity	3.2	Appreciable
AVERAGE	3.0	Appreciable

² Contrast Rating Scale: 0.0 - 0.2 (Insignificant), 0.3 – 0.7 (Insignificant/Minimal), 0.8 – 1.2 (Minimal), 1.3 – 1.7 (Minimal/Moderate), 1.8 - 2.2 (Moderate), 2.3 – 2.7 (Moderate/Appreciable), 2.8 – 3.2 (Appreciable) 3.3 – 3.7 Appreciable/Strong), 3.8 – 4.0 (Strong).

Contrast Rating - Lowest and Highest Scores:

Post - Install		
Component	Score	
	Low	High
Landform	2.0	3.5
Vegetation	2.0	3.5
Land Use	2.5	3.0
Water	NA	NA
Sky	2.5	3.5
Viewer Activity	2.5	3.5

Existing View



Proposed View (Post Installation)



Existing View

Viewpoint 54 is located on South Road in the Town of Fenner, approximately 0.5 miles from the nearest proposed wind turbine that would be visible in the selected photo's field of view. This high elevation viewpoint is relatively even with the proposed turbine location and occurs in the Agricultural/Rural Residential LSZ. The viewpoint overlooks an area characterized by rolling agricultural lands broken up by woodlots and hedgerows. Due to the generally isolated location away from major highway arterials, the typical viewers at this location would be local residents. In the selected view to the south-southeast, rows of corn at mid height obscure views to the middle ground, however, background hills extend above the crop line. The middle ground descends into a valley, with only the upper portions of trees and agricultural buildings visible in the valley. The upper portion of a silo extending up from the valley is a focal point in the view, but the viewer's eye is also drawn to the opposite hill which occupies the entire background. The hill is slightly above the elevation of the viewer. It is half wooded and half agricultural meadowland, and blocks views of more distant landscape features. Above the ridge line the sky is clear blue and is uninterrupted by foreground trees or overhead wires. The crop line, valley, and horizon present gently rolling lines within the landscape. These are not hard lines because they are broken by the roofs of agricultural buildings and the jagged edges of crops and wood lots. The elevated viewer perspective and the descent of the valley between the viewer and the opposite hill create visual interest and high scenic quality according to the rating panel.

Proposed View

With the proposed Project in place, two wind turbines can be seen extending well into the sky at and beyond the ridgeline that defines the horizon. Some tree clearing to accommodate the turbines has occurred on the background hillside, but the change is not particularly noticeable. However, the height/scale contrast of the turbines relative to the rolling landform and trees on the ridgeline is substantial. A noticeable color contrast of the turbines with the sky also occurs due to lighting conditions; the dark shadow on their near face contrasting with the brightly lit white surfaces and the light blue sky. Due to their proximity to the viewer, and because they are completely unscreened by the ridgeline or any intervening features, details of the turbines are clearly visible and they become the dominant focal points in the view. The contrast of the turbines' vertical lines with the horizontal features of the landscape is slightly reduced by the rolling nature of the foreground and background horizontal features which are further broken by agricultural structures. Because the wind turbines now dominate the view, they alter the character and scenic quality of the view and result in appreciable visual contrast.

Hoffman Falls Wind Project

Towns of Eaton, Fenner, Nelson, and Smithfield, Madison County, New York

EXISTING VIEW



Note: Printed at actual size, the existing view image is 15 inches wide by 10 inches high. At this size and focal length, the existing view image should be viewed from a distance 21 inches from the eye of the viewer.



VIEWPOINT 54
South Road

Hoffman Falls Wind Project
Towns of Eaton, Fenner, Nelson, and Smithfield, Madison County, New York



PHOTOSIMULATION



Note: Printed at actual size, the resulting simulation image is 15 inches wide by 10 inches high. At this size and focal length, the simulation should be viewed from a distance 21 inches from the eye of the viewer.

0 1 in 2 in
This scale is designed to insure the simulation images are printed at the intended size.

VIEWPOINT 54
South Road

Hoffman Falls Wind Project
Towns of Eaton, Fenner, Nelson, and Smithfield, Madison County, New York





Note: The image above is a panorama photograph taken from Hardscrabble Road in the Town of Nelson panning clockwise from northwest (left) to east (right). The green rectangle represents the extent of the simulated photograph.

VIEWPOINT 58
Hardscrabble Road

VIEWPOINT INFORMATION

Location: Hardscrabble Road
Town: Nelson
County: Madison
Latitude: 42.88564° N
Longitude: 75.80842° W

LOCATION INFORMATION

Distance Zone Represented in View: Background
Viewer Distance*: 4.2 miles
Landscape Similarity Zone: Agricultural/Rural
Residential
Viewer/User Group(s): Local Residents, Through-
Travelers
Visually Sensitive Resource(s): None Identified

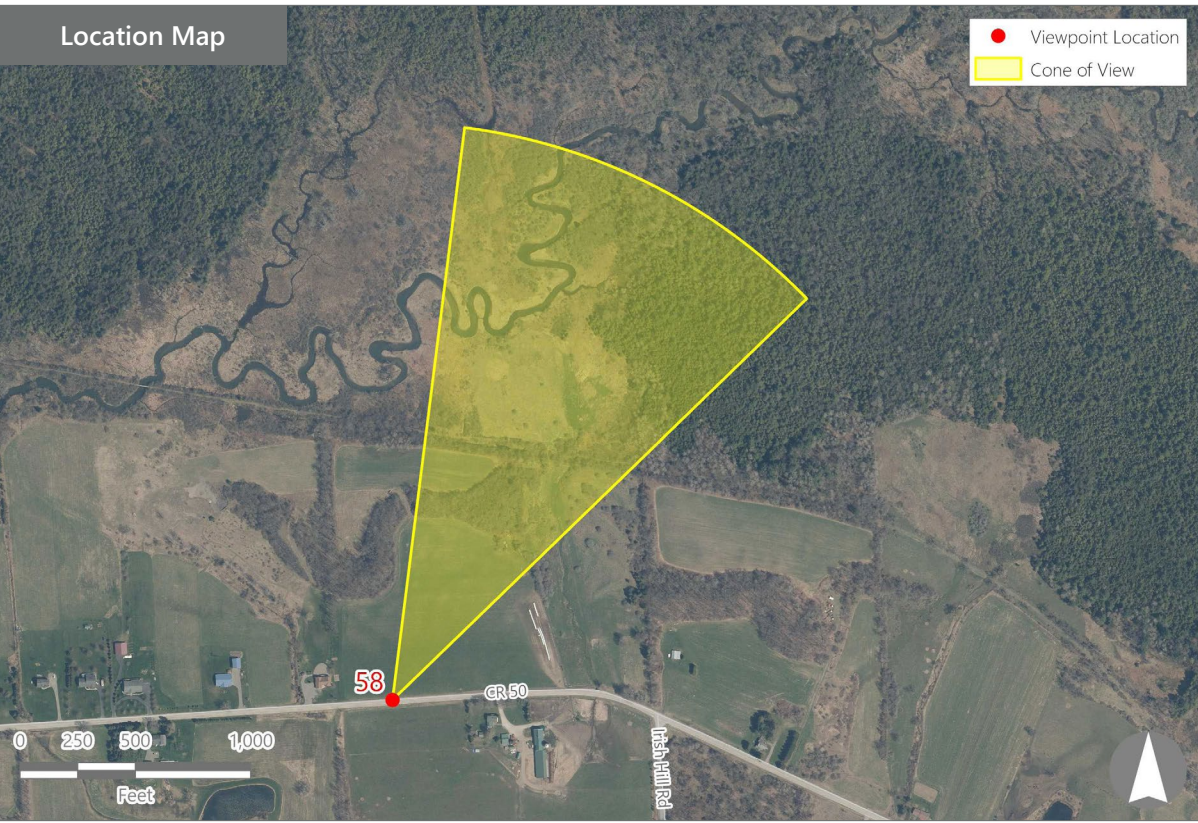
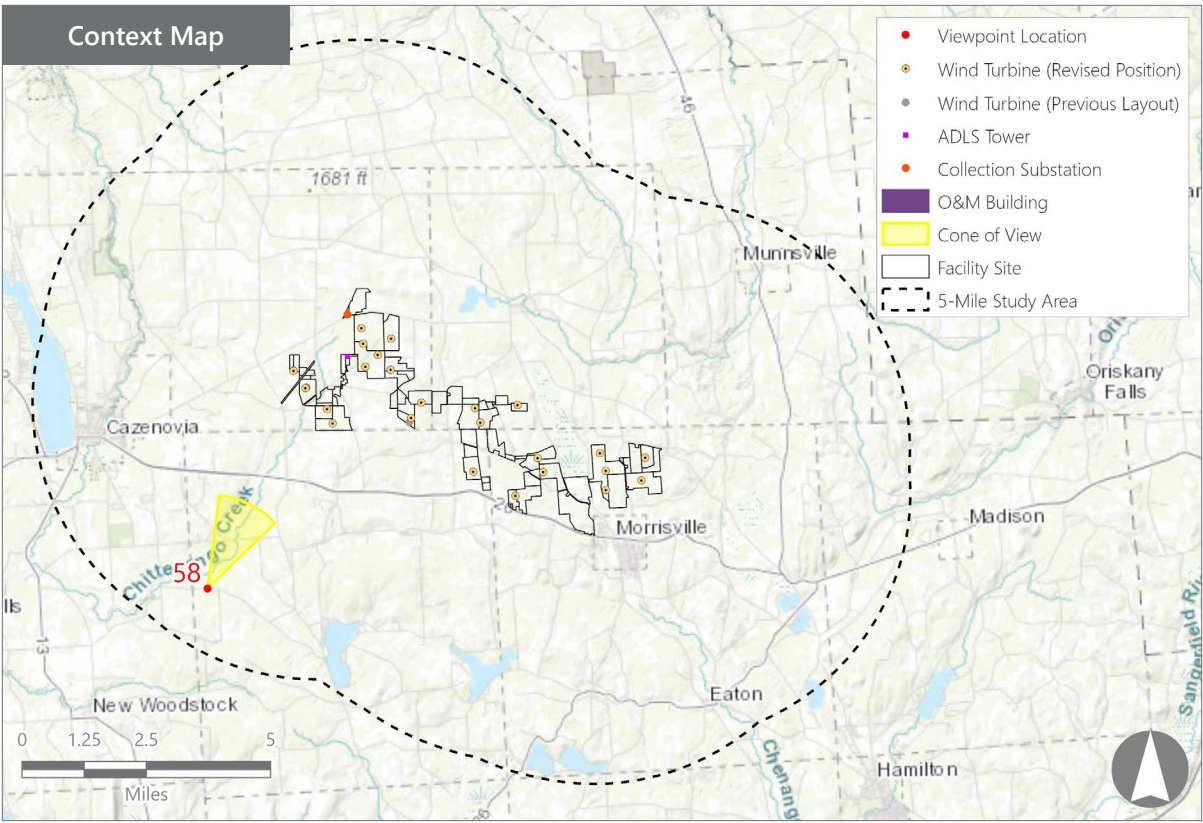
PHOTOGRAPH INFORMATION

Date: August 31, 2023
Time: 5:13 PM
Camera: Canon EOS 5D Mark IV
Resolution: 24 Megapixels
Lens Focal Length (35mm equivalent): 50 mm
Camera Elevation: 1,471 feet
Field of View: 39 degrees
Direction of View: North-northeast
Printed Size: 10" x 15"
Viewing Distance:** 21"

NOTES

*Distance as measured from the viewpoint to the closest wind turbine generator within the simulated photograph's field of view

**The simulation is at the correct perspective when printed on an 11 inch by 17 inch sheet at full scale, and viewed approximately 21 inches from the eye of the viewer.



Hoffman Falls Wind Project
Towns of Eaton, Fenner, Nelson, and Smithfield, Madison County, New York

Visual Impact Assessment Addendum
Appendix 8-A

Viewpoint Sensitivity¹:

Scenic Quality:

- ☐ Low
- ☒ Moderate
- ☒ High

Viewer Exposure

Frequency:

- ☒ Rare
- ☒ Occasional
- ☒ Regular/Repeated

Duration of View:

- ☒ Short/Brief/Fleeting
- ☐ Moderate
- ☒ Long

¹Viewpoint Sensitivity information is gathered from rating panel results. Scenic Quality is an average based on Low = 1, Moderate = 2, High = 3. Viewer Exposure reflects all those selected by the review panel.

Contrast Rating Scores²:

Component	Score	Contrast Rating
	Install	
Landform	1.5	Minimal/Moderate
Vegetation	1.2	Minimal
Land Use	1.5	Minimal/Moderate
Water	N/A	N/A
Sky	1.3	Minimal/Moderate
Viewer Activity	1.5	Minimal/Moderate
AVERAGE	1.4	Minimal/Moderate

² Contrast Rating Scale: 0.0 - 0.2 (Insignificant), 0.3 - 0.7 (Insignificant/Minimal), 0.8 - 1.2 (Minimal), 1.3 - 1.7 (Minimal/Moderate), 1.8 - 2.2 (Moderate), 2.3 - 2.7 (Moderate/Appreciable), 2.8 - 3.2 (Appreciable) 3.3 - 3.7 Appreciable/Strong), 3.8 - 4.0 (Strong).

Contrast Rating - Lowest and Highest Scores:

Post - Install		
Component	Score	
	Low	High
Landform	1.5	1.5
Vegetation	1.0	1.5
Land Use	1.0	2.5
Water	NA	NA
Sky	1.0	2.0
Viewer Activity	1.0	2.5

Existing View



Proposed View (Post Installation)



Existing View

Viewpoint 58 is located on Hardscrabble Road in the Town of Nelson, approximately 4.2 miles from the nearest proposed wind turbine that would be visible in the selected photo's field of view. This relatively high elevation viewpoint occurs in the Agricultural/Rural Residential LSZ but overlooks an area characterized by more abundant woody vegetation. Typical viewers at this location would be local residents and through-travelers. In the selected view to the north-northeast, a wire fence with weathered wooden posts is present in the foreground but is barely perceptible against the verdant green hayfield located behind it. The hayfield slopes downward toward thick and lush woods that obscure the lower elevations in the middle ground. Above the middle ground tree line, darker rolling hills are seen against a light blue open sky. The distant hills are largely covered with trees and are lightly shrouded in haze. There are discrete patches of agricultural fields with distant agricultural structures visible upon close examination. At least three existing wind turbines are visible against the horizon. However, the light color of the turbines, their distance from the viewer, and the atmospheric conditions reduce their visibility and make them perceptible only upon extended viewing.

Proposed View

With the proposed Project in place, multiple wind turbines are visible on and behind the background hills. The new turbines blend well with the background sky, but the shadow of the reverse face of the turbine blades make them more visible than the existing more distant turbines. The closer location of the new turbines to the viewer also reduces the obscuring properties of the background haze. The new turbines do not significantly change the open agricultural character of the view, but the layering of distant and nearby turbines increases visual clutter above the near and distant tree lines. According to the rating panel, scenic quality of this view with the Project in place may be minimally reduced but would remain high resulting in minimal to moderate contrast.

Hoffman Falls Wind Project

Towns of Eaton, Fenner, Nelson, and Smithfield, Madison County, New York

EXISTING VIEW



Note: Printed at actual size, the existing view image is 15 inches wide by 10 inches high. At this size and focal length, the existing view image should be viewed from a distance 21 inches from the eye of the viewer.



VIEWPOINT 58
Hardscrabble Road

Hoffman Falls Wind Project
Towns of Eaton, Fenner, Nelson, and Smithfield, Madison County, New York

