

# Historic Resources Survey Report

## Agricola Wind Project

### Towns of Venice and Scipio, Cayuga County, New York

NYSHPO Project Review Number 21PR03987

ORES Matter Number No. 23-00064

Prepared for:



Liberty Renewables Inc.  
90 State Street  
Albany, NY 12207

Prepared by:



Environmental Design & Research, D.P.C.  
217 Montgomery Street, Suite 1100  
Syracuse, New York 13202  
[www.edrdpc.com](http://www.edrdpc.com)

August 2024

## MANAGEMENT SUMMARY

NYSHPO Project Review Number:	21PR03987
ORES Matter Number:	23-00064
Involved State/Federal Agencies:	New York State Office of Parks Recreation and Historic Preservation (Section 14.09); New York State Office of Renewable Energy Siting (ORES, Article VIII); U.S. Army Corps of Engineers (USACE)
Phase of Survey:	Historic Resources Survey
Location Information:	Towns of Venice and Scipio, Cayuga County, New York
Survey Area:	
Facility Description:	A proposed up to 99-megawatt (MW) community-scale wind energy generating facility consisting of up to 24 Wind Turbine Generators (WTGs) and associated infrastructure.
Facility Site:	Approximately 3,989 acres (6.2 square miles) of private land that is currently under, or being pursued for, lease (or other real property interest) to contain all components of the proposed Facility.
Historic Resources Study Area:	The area within five miles of proposed turbines (and other aboveground features), which has been defined as the appropriate study area for effects on above-ground historic resources, totaling approximately 93,532 acres (146.1 square miles).
Area of Potential Effect (APE) for Visual Effects:	The area where the Facility may result in effects on historic resources, such as visual impacts. The APE for Visual Effects includes those areas within five miles of proposed turbines (and other aboveground features) where Facility components are anticipated to be visible based on a viewshed analysis, totaling approximately 40,026 acres (62.5 square miles).
USGS 15-Minute Quadrangles:	<i>Scipio Center, NY; Moravia, NY; Genoa, NY</i>
Historic Resources Survey Overview:	A total of 148 resources were evaluated in the survey:

- There are 83 resources previously identified in the New York State Office of Parks, Recreation and Historic Preservation (NYSHPO) Cultural Resources Information System (CRIS) or through review of previous historic resources surveys which are located within the Historic Resources Study Area and APE for Visual Effects, including one National Historic Landmark (the Jethro Wood House), seven individual resources listed in the State and National Register of Historic Places (S/NRHP), three S/NRHP-listed historic districts, 12 resources that were previously determined NYSHPO to be S/NRHP-eligible, and 60 resources for which S/NRHP eligibility has not been formally determined (including one historic district).
- EDR recommends no change in status for the National Historic Landmark Jethro Wood House and the 10 S/NRHP-listed resources.
- Of the 12 resources previously determined by NYSHPO to be S/NRHP-eligible, EDR found that one resource is no longer extant and recommends that one resource no longer meets S/NRHP eligibility criteria and the remaining 10 resources meet S/NRHP eligibility criteria.
- Of the 60 resources previously identified but not formally evaluated by NYSHPO, EDR recommends that 43 meet S/NRHP eligibility criteria, 10 do not meet S/NRHP eligibility criteria, five resources were found to be no longer extant, and two resources could not be evaluated due to their inaccessibility and lack of visibility from the public right-of-way.
- A total of six resources located within the Historic Resources Study Area and APE for Visual Effects were identified through consultation with local stakeholders. Of these six resources, EDR recommends that four meet S/NRHP eligibility criteria and two could not be evaluated due to their inaccessibility and lack of visibility from the public right-of-way.
- A total of 59 newly identified resources are recommended by EDR to meet S/NRHP eligibility criteria (including two historic districts) and two newly identified resources could not be evaluated due to their inaccessibility and lack of visibility from the public right-of-way.

Report Authors:

Kristen Olson; Grant Johnson

Date of Report:

August 2024

## TABLE OF CONTENTS

1.0	INTRODUCTION.....	1
1.1	Purpose of the Investigation.....	1
1.2	Facility Location and Description .....	1
1.3	Agency Consultation .....	5
1.4	Historic Resources Study Area and Area of Potential Effect (APE).....	5
2.0	BACKGROUND AND SITE HISTORY .....	8
2.1	Historic Research .....	8
2.2	Previous Historic Resources Surveys within the Study Area.....	8
2.3	Previously Identified Historic Resources.....	9
2.4	Stakeholder Consultation .....	9
3.0	HISTORIC RESOURCES SURVEY RESULTS.....	13
3.1	Criteria for Evaluating the Significance of Historic Resources.....	13
3.2	Historic Resources Survey Methods.....	14
3.3	Evaluation of Previously Identified Historic Resources.....	14
3.4	Locally Identified Historic Resources .....	15
3.5	Newly Identified Historic Resources.....	16
3.6	Representative Resources Over 50 Years Old .....	16
4.0	HISTORIC RESOURCES EFFECTS ASSESSMENT .....	22
4.1	Visual Setting of Historic Resources Within the APE for Visual Effects.....	22
4.2	Potential Effect on Historic Resources.....	22
5.0	SUMMARY.....	24
5.1	Summary of Historic Resources Survey .....	24
5.2	Summary of Facility's Potential Effect on Historic Resources .....	25
6.0	REFERENCES.....	26

## LIST OF FIGURES

Figure 1. Regional Facility Location.....	2
Figure 2. Proposed Facility.....	4
Figure 3. Historic Resources Study Area and APE for Visual Effects .....	7
Figure 4. Previously Identified Historic Resources .....	12
Figure 5. Representative farmstead with an altered Greek Revival-style residence. ....	17
Figure 6. Representative nineteenth-century farmstead with a Greek Revival-derived vernacular residence. .....	17
Figure 7. Representative nineteenth-century farm residence without surviving agricultural buildings.....	17



Figure 8. Representative nineteenth-century farm residence without surviving farm buildings. ....	17
Figure 9. Representative nineteenth-century barn without a surviving farm residence. ....	18
Figure 10. Representative nineteenth-century barn without a surviving farm residence. ....	18
Figure 11. Representative nineteenth-century residence in a hamlet setting. ....	18
Figure 12. Representative nineteenth-century residence in a hamlet setting. ....	18
Figure 13. Representative nineteenth-century rural schoolhouse. ....	19
Figure 14. Representative nineteenth-century commercial building. ....	19
Figure 15. Representative late-nineteenth- or early-twentieth-century lakefront cottage. ....	20
Figure 16. Representative late-nineteenth- or early-twentieth-century lakefront cottage. ....	20
Figure 17. Representative mid-twentieth-century lakefront cottages. ....	20
Figure 18. Representative mid-twentieth-century lakefront cottage. ....	20
Figure 19. Representative mid-twentieth-century rural residence. ....	21
Figure 20. Representative mid-twentieth-century rural residence. ....	21

## LIST OF TABLES

Table 1. Local Stakeholder Outreach.....	10
--	----

## LIST OF ATTACHMENTS

Attachment A. NYSHPO Correspondence
Attachment B. Historic Resources Survey Results Table
Attachment C. Historic Resources Survey Results Map
Attachment D. Trekker Survey Forms

## 1.0 INTRODUCTION

### 1.1 Purpose of the Investigation

On behalf of Agricola Wind LLC (the Applicant), Environmental Design & Research, Landscape Architecture, Engineering, & Environmental Services, D.P.C. (EDR) has prepared this Historic Resources Survey Report for the proposed Agricola Wind Project (or the Facility), located in the Towns of Venice and Scipio in Cayuga County, New York. The information and recommendations included in this report are intended to assist the Office of Renewable Energy Siting (ORES), the New York State Office of Parks, Recreation and Historic Preservation (NYSHPO), the U.S. Army Corps of Engineers (USACE), and other New York state and/or federal agencies in their review of the Facility under Article VIII of the New York State Public Service Law, Section 14.09 of the New York State Parks, Recreation, and Historic Preservation Law, and/or Section 106 of the National Historic Preservation Act, as applicable.

As described in Title 19 of the New York Code, Rules and Regulations (19 NYCRR) Part 1100-2.10 (Exhibit 9: Cultural Resources), an Article VIII Application must include:

(b) A study of the impacts on historic resources within the project impact area<sup>1</sup>, including the results of field inspections, a review of the statewide inventory of historic property, and consultation with local historic preservation groups and federal/state-recognized Indian Nations to identify sites or structures listed or eligible for listing in the State or National Register of Historic Places within the PIA, including an analysis of potential impact on any standing structures which appear to be at least fifty (50) years old and potentially eligible for listing in the State or National Register of Historic Places, based on an assessment by a qualified individual.

The purpose of the historic resources survey is to identify and document those buildings within the Facility's Area of Potential Effect (APE) for Visual Effects (Section 1.4) that appear to satisfy State and National Register of Historic Places (S/NRHP) eligibility criteria (further defined in Section 3.1). All cultural resources studies undertaken by EDR in association with the Facility have been conducted by professionals who satisfy the qualifications criteria per the Secretary of the Interior's Standards for Historic Preservation (36 CFR 61) in a manner consistent with the *New York State Historic Preservation Office Guidelines for Wind Farm Development Cultural Resources Survey Work* (the NYSHPO *Wind Guidelines*; NYSHPO, 2006).

Please note that this report addresses only aboveground historic resources; information concerning the Facility's potential effect on archaeological resources will be provided to NYSHPO under separate cover.

### 1.2 Facility Location and Description

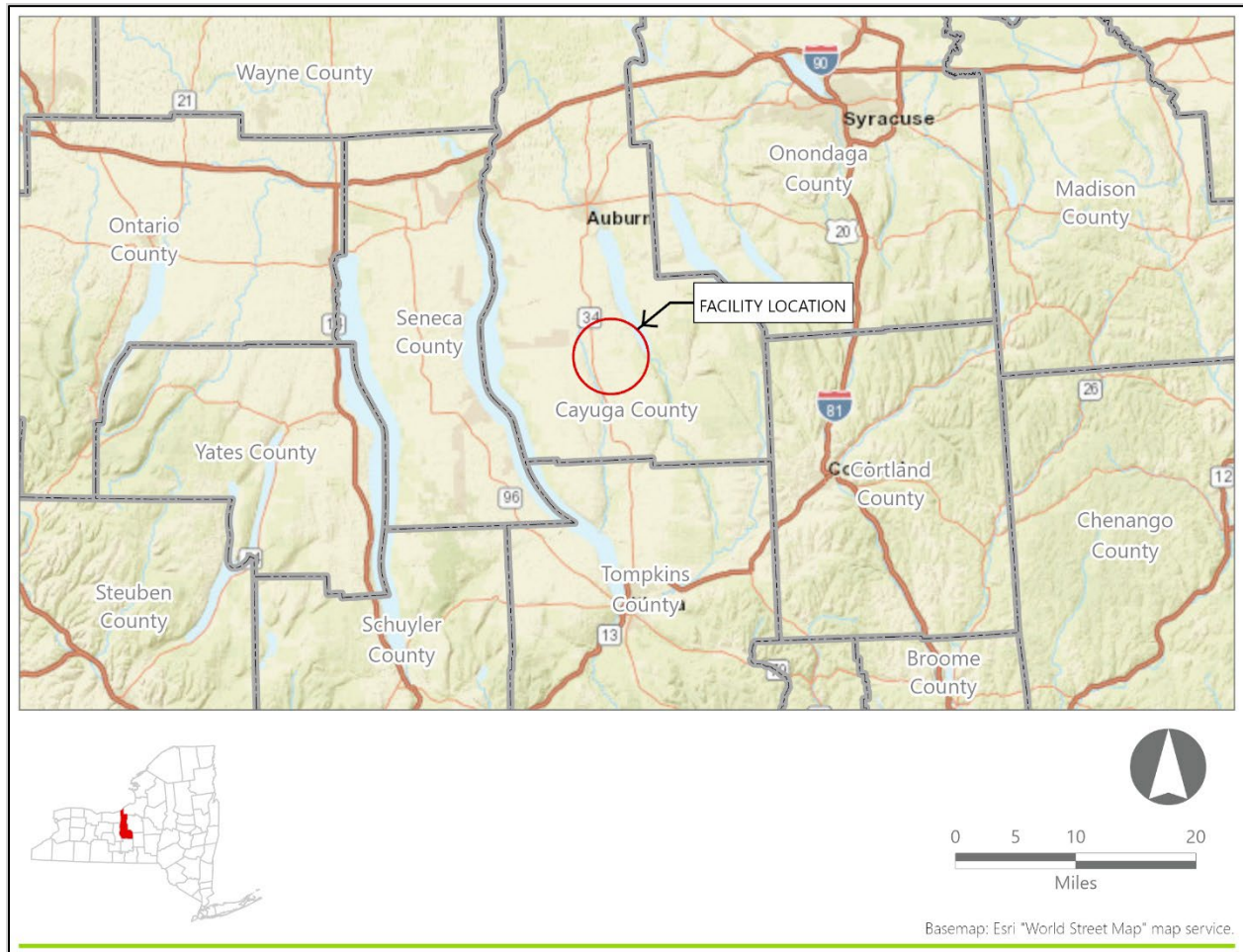
The proposed Facility is a utility-scale wind energy generating project with a generating capacity of up to 99-megawatts (MW) located within the Towns of Venice and Scipio in Cayuga County, New York (Figures 1 and 2). The Facility layout is still in development and will consist of up to 24 Wind Turbine Generators (WTGs) with a current maximum height of up to 656 feet<sup>2</sup> and supporting infrastructure, which will include access

---

<sup>1</sup> The project impact area (PIA) as defined in 19 NYCRR Part 1100-2.10 is synonymous with the Area of Potential Effect for Visual Effects as described in this report.

<sup>2</sup> Maximum turbine height may change as the layout is finalized; any changes in layout will be indicated as part of subsequent deliverables.

roads, collection lines, meteorological towers, an aircraft detection lighting system (ADLS) tower, laydown yards, a collection substation, and an associated point-of-interconnection (POI), as well as other Facility components.



**Figure 1. Regional Facility Location**

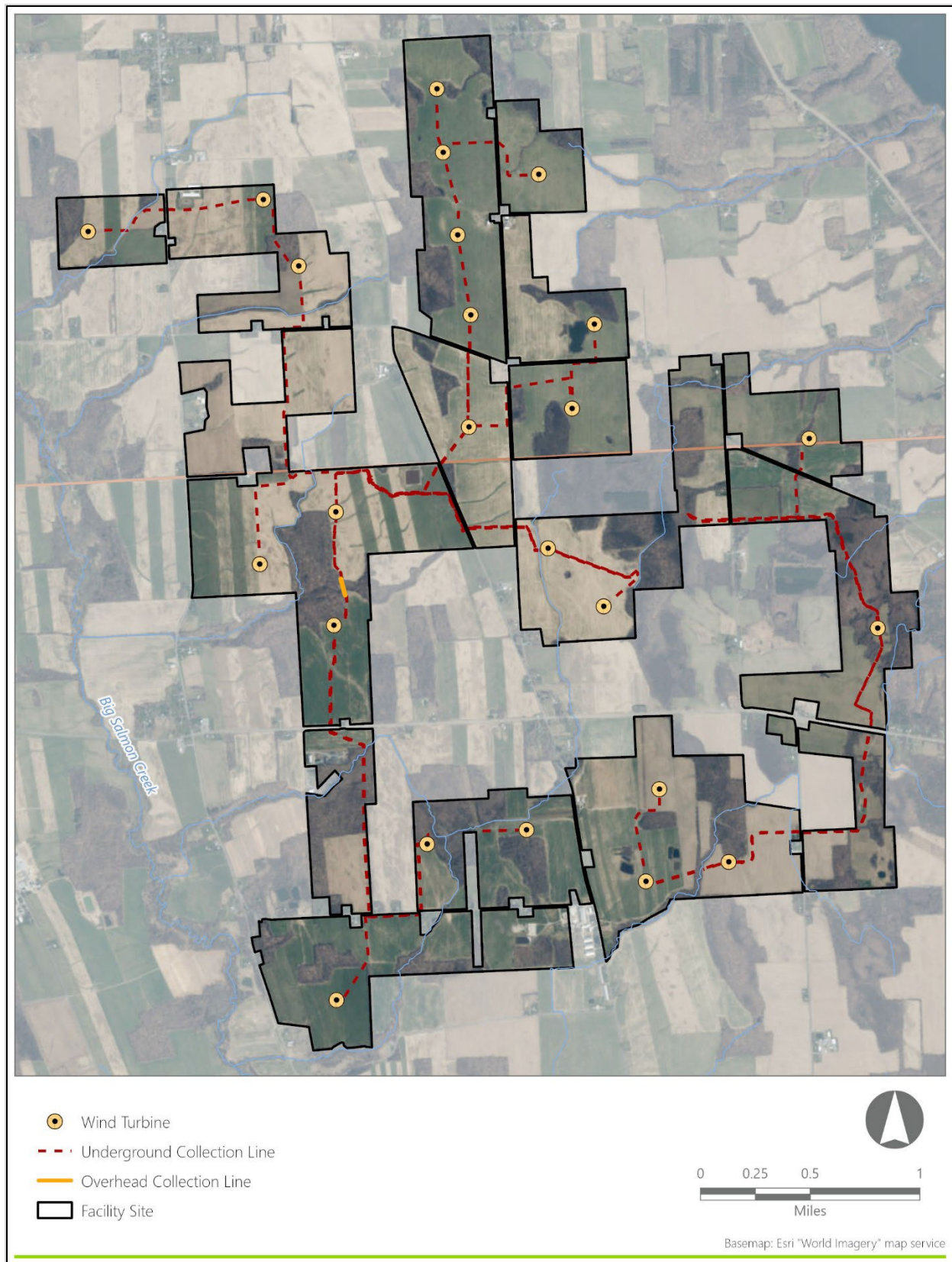
The following terms are used throughout this document to describe the proposed action:

- Facility:** Collectively refers to all components of the Agricola Wind Project, which includes up to 24 WTGs and associated infrastructure in the Towns of Venice and Scipio, Cayuga County, New York.
- Facility Site:** Those parcels or portions of parcels currently under, or being pursued, for lease (or other real property interests) with the Applicant for the location of all Facility components (which will be defined in the Article VIII Application; Figure 2).

Historic Resources Study Area: The area within 5 miles of proposed turbines (and other aboveground features), which is defined in Section 1.3 of this report as the appropriate study area for effects on historic resources (Figure 3).

Archaeological Area of Potential Effect (APE): The Archaeological APE for the Facility is the area containing all proposed soil disturbance associated with the Facility, as further described in the *Phase IB Archaeological Survey* for the Facility to be provided under separate cover.

APE for Visual Effects: The APE for Visual Effects includes those areas where the Facility may result in effects on historic resources, such as visual impacts. The APE for Visual Effects for the Facility includes those areas within 5 miles of proposed turbines (and other aboveground features) which are within the potential viewshed (based on topography and estimated vegetated canopy heights) of the Facility (Figure 3).



**Figure 2. Proposed Facility**



### 1.3 Agency Consultation

The NYSHPO *Wind Guidelines* request that cultural resources surveys for wind energy projects include consultation with NYSHPO to determine the scope and methodology to identify and evaluate historic resources. An initial request for consultation was made to NYSHPO via the Cultural Resources Information System (CRIS) website (NYSHPO, 2024a) on June 15, 2021 (EDR, 2021a). This submittal included a description of the proposed Facility and a map of the Facility Site and proposed a historic resources survey be conducted in accordance with the NYSHPO *Wind Guidelines* in order to meet the Article VIII requirements. On July 2, 2021, NYSHPO provided a response via CRIS concurring with EDR's general approach to the historic resources survey and requested that they be provided with the methodology and scope of work for historic resources surveys for the Facility (NYSHPO, 2021). In addition, preliminary consultation was initiated with the Cayuga Nation and the Onondaga Nation through an introductory letter sent June 15, 2021 (EDR, 2021b). Subsequent to EDR's initial request for consultation with the Nations in June 2021, the Facility layout was changed. The descriptions and figures herein reflect the current Facility layout.

A *Phase IA Historic Resources Survey Methodology* was submitted to NYSHPO on April 25, 2024 (EDR, 2024). The *Phase IA Historic Resources Survey Methodology* identified resources within the Facility's APE for Visual Effects that appear to satisfy S/NRHP eligibility criteria and proposed a scope of work and methodology for additional survey of the Facility's Historic Resources Study Area per NYSHPO guidelines. On April 26, 2024, NYSHPO provided a response which concurred with the work plan outlined in the Phase IA survey methodology and requested that EDR initiate a historic resources survey for the Facility using the Trekker application and submit a subsequent historic resources survey report (NYSHPO, 2024b; Attachment A).

As stated in Section 1.1, this report addresses only aboveground historic resources; information concerning the Facility's potential effect on archaeological resources is being provided to NYSHPO under separate cover via the CRIS website. A copy of all referenced agency correspondence is included as Attachment A.

### 1.4 Historic Resources Study Area and Area of Potential Effect (APE)

The Facility's potential effect on a given historic property would be a change (resulting from the introduction of wind turbines or other Facility components) in the property's visual setting. Therefore, the APE for Visual Effects on historic resources must include those areas where Facility components (including wind turbines) will be visible and where there is a potential for a significant visual effect. Per the requirements set forth in 19 NYCRR Part 1100(bx), the study area to be used for analysis of major electric generating facilities is defined as:

(bx) Study area means the area generally related to the nature of the technology and the setting of the proposed site. Unless otherwise provided in this Part, in highly urbanized areas, the study area is a minimum one (1)-mile radius from the property boundaries of the facility site, interconnections and related facilities, and for facilities with components spread across a rural landscape, the study area shall at a minimum include the area within a radius of at least five (5) miles from all generating facility components, interconnections and related facilities (NYCRR, 2021).

The Historic Resources Study Area for the Facility includes the entirety of the Town of Venice; most of the Town of Scipio; portions of the Towns of Fleming, Owasco, Niles, Moravia, Locke, Genoa, Ledyard, and

Springport; and most of the Village of Moravia in Cayuga County, New York. Per the NYSHPO *Wind Guidelines*, the APE for Visual Effects on historic properties for wind projects is defined as those areas within 5 miles of proposed turbines (and other aboveground features) which are within the potential viewshed of a given project (Figure 3; NYSHPO, 2006). Recent NYSHPO guidance on cultural resources surveys for wind energy projects notes that the viewshed analysis which forms the basis for the APE for Visual Effects may consider the screening effects of topography and estimated vegetated canopy heights (NYSHPO, 2023).

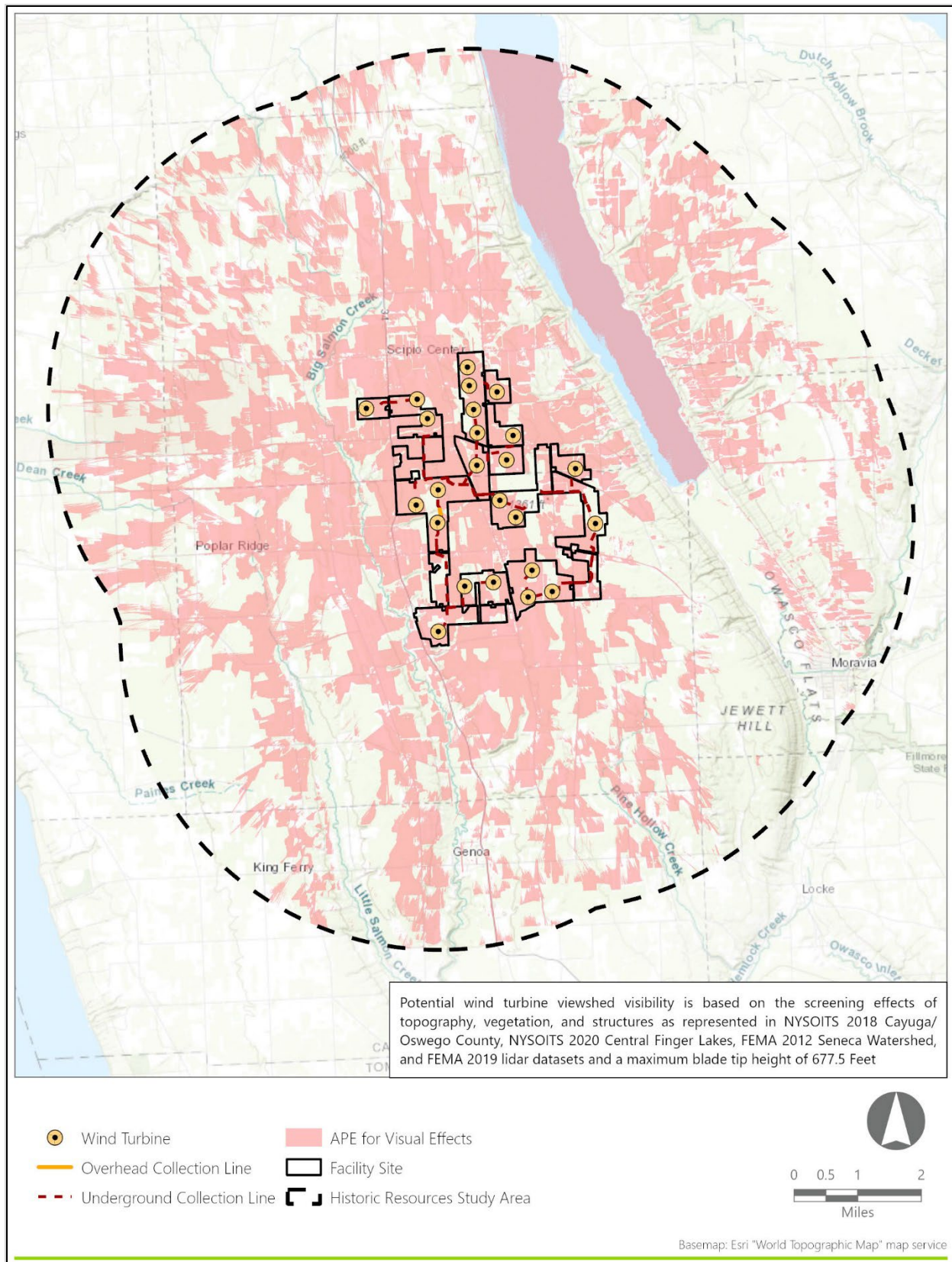
#### Potential for Effects to Archaeological Resources

The *Phase IB Archaeological Survey* for the Facility (to be provided under separate cover) defines an APE for all areas where potential soil disturbance (or other direct, physical impacts) is anticipated during construction of the Facility.

#### Visual Effects

The APE for Visual Effects on historic resources includes those areas where the Facility may result in visual impacts on cultural resources. The Facility's potential effect on historic resources would be a change (resulting from the introduction of wind turbines or other Facility components) in the property's setting.

In order to accurately determine an APE for Visual Effects for the Facility, a viewshed analysis for the proposed Facility was prepared using 2018 and 2020 New York Office of Information Technology Services lidar data, 2012 and 2019 Federal Emergency Management Agency lidar data, a maximum blade tip height of 677 feet, and ESRI ArcGIS® software with the Spatial Analyst extension. The Digital Surface Model (DSM) viewshed analysis considering the screening effects of topography, structures, and estimated existing vegetation heights, which provides the basis for the APE for Visual Effects, is presented in Figure 3.



**Figure 3. Historic Resources Study Area and APE for Visual Effects**



## 2.0 BACKGROUND AND SITE HISTORY

### 2.1 Historic Research

A historic context for the Historic Resources Study Area, including a historic map analysis, is included in Section 2.2 of the *Phase IA Historic Resources Survey Methodology* (EDR, 2024). Archives and repositories consulted during EDR's research for the Facility included the online digital collections of the Library of Congress, New York State Library, David Rumsey Map Collection, and the United States Geological Survey (USGS). Sources reviewed for the Facility included:

- *History of Cayuga County, New York* (Storke, 1879);
- *History of Cayuga County, New York* (CCHS, 1908);
- *The Greek Revival in America* (Hamlin, 1943);
- *American Building: The Historic Forces that Shaped It* (Fitch, 1966);
- *Handbook of North American Indians*, Vol. 15: Northeast (Trigger, 1978); and
- *The Encyclopedia of New York State* (Eisenstadt, 2005).

Historic maps consulted during EDR's research for the Facility included:

- 1792 De Witt *State-Map of New-York* (De Witt, 1792);
- 1829 Burr *Map of the County of Cayuga* (Burr, 1829);
- 1840 Burr *Map of the County of Cayuga* (Burr, 1840);
- 1853 Geil *Map of Cayuga County, New York* (Geil, 1853);
- 1859 Gray and Lothrop *Map of Cayuga and Seneca Counties, New York* (Gray and Lothrop, 1859);
- 1875 Beers *County Atlas of Cayuga, New York* (Beers, 1875);
- 1902 USGS *Auburn, NY, Genoa, NY, Moravia, NY, and Skaneateles, NY* 1:62500 Topographic Quadrangles (USGS, 1902a; 1902b; 1902c; 1902d); and
- 1943 USGS *Genoa, NY, Moravia, NY, Owasco, NY, and Scipio, NY* 1:31680 Topographic Quadrangles (USGS, 1943a; 1943b; 1943c; 1943d).

### 2.2 Previous Historic Resources Surveys within the Study Area

A review of the CRIS database indicated that two previous historic resources surveys have been conducted within the Historic Resources Study Area and APE for Visual Effects for the Facility:

- The *Women's Suffrage in Central New York* historic context statement was prepared by Judith Wellman in 2019 (Wellman, 2019). The report provides a history of women's suffrage activism in Central New York during the nineteenth and twentieth centuries and provides an inventory of related sites. None of the sites identified in the report are located within the Historic Resources Study Area.
- The *Uncovering the Freedom Trail in Auburn and Cayuga County, New York* cultural resources survey was prepared by Judith Wellman in 2005 (Wellman, 2005). The survey report identifies numerous resources relating to the Underground Railroad, abolitionism, and African American

life within the Historic Resources Study Area, of which two were not previously documented in CRIS. Neither of these two resources are located within the APE for Visual Effects.

In addition, the Cobblestone Museum's Cobblestone Info Base, a database of known cobblestone structures in New York State and beyond, identifies nine cobblestone structures within the Historic Resources Study Area, four of which were not previously documented in CRIS (Cobblestone Museum, 2024). Of these four resources, two are located within the APE for Visual Effects.

Locations of previously identified historic resources within the Historic Resources Study Area are depicted on Figure 4.

### **2.3 Previously Identified Historic Resources**

EDR reviewed the CRIS website maintained by NYSHPO as well as previous historic resources surveys (Section 2.2) to identify significant historic buildings and/or districts, as well as other previously identified historic properties (i.e., cemeteries, bridges, monuments) located within the Historic Resources Study Area. A total of 148 previously identified resources are located within the Historic Resources Study Area. The viewshed analysis (described in Section 1.4 and depicted in Figures 3 and 4) was then used to identify aboveground historic resources located within the APE for Visual Effects. This analysis was conducted using the spatial join extension in the ESRI ArcGIS® software to determine which resources within the historic resources study area were found to fall within the viewshed. A total of 83 previously identified historic resources within the APE for Visual Effects were identified based on this analysis, including one National Historic Landmark (NHL), 10 S/NRHP-listed resources (including two historic districts), 12 S/NRHP-eligible resources, and 60 resources that have not been formally evaluated by NYSHPO in terms of their S/NRHP eligibility (including one historic district). The locations of previously identified resources are depicted in Figure 4.

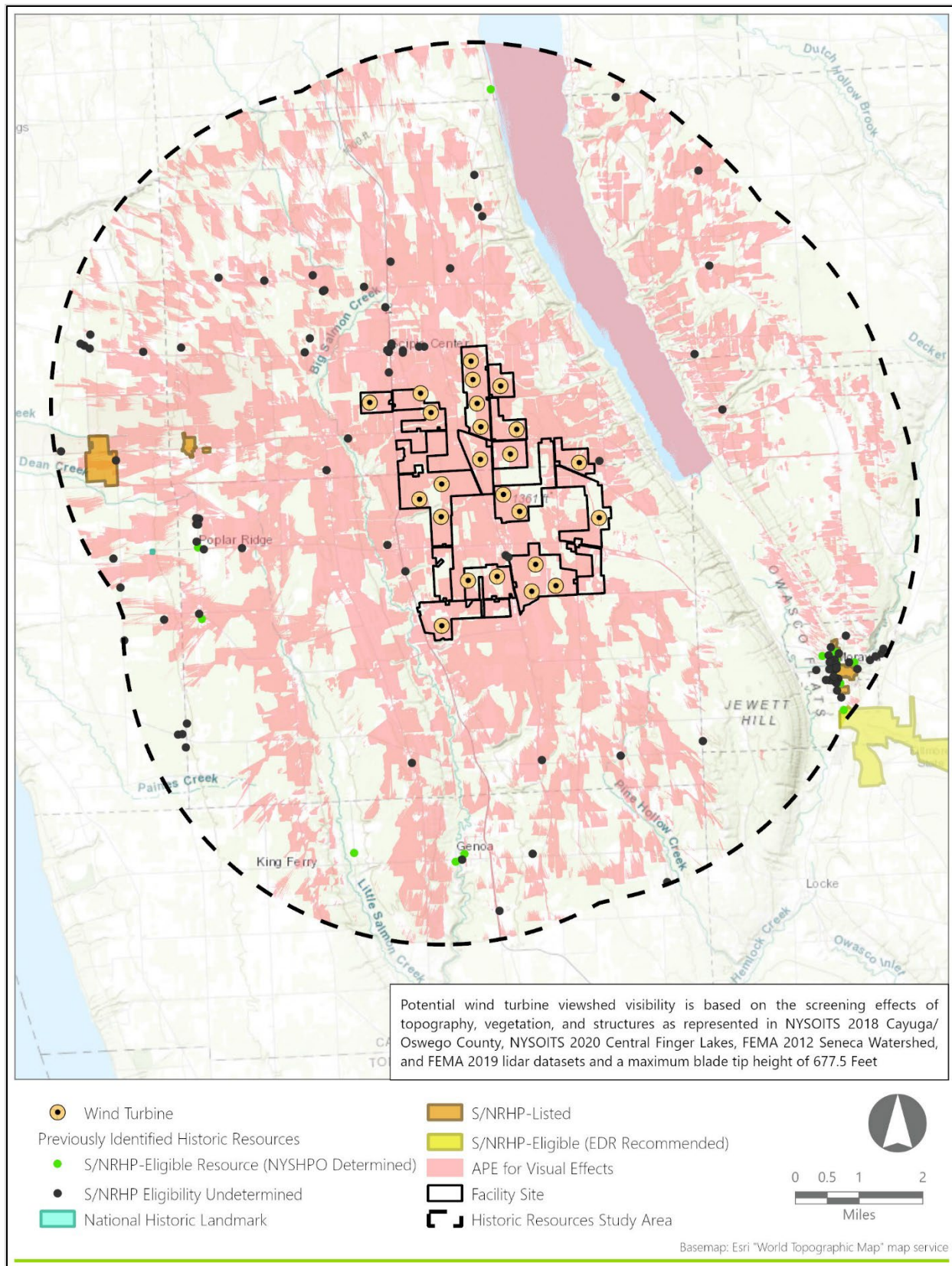
### **2.4 Stakeholder Consultation**

As a part of the historic resources survey, EDR also contacted local historians and historical societies seeking input regarding the identification of historic resources with historic or architectural significance located within the Historic Resources Study Area and APE for Visual Effects. Outreach included email correspondence from May 25 through July 9, 2024. A summary of contact and outcomes is provided in Table 1. Consultation with local stakeholders identified a total of six potential historic resources within the Historic Resources Study Area and APE for Visual Effects which had not been previously identified in CRIS, including three cemeteries, one railroad depot, one residence, and one commercial building. Locally identified resources are described in Section 3.4 and depicted in Figure 4.

Table 1. Local Stakeholder Outreach

Municipality or Organization	Contact	Title	Date(s) of Outreach	Mode(s) of Outreach	Outcome
Community Preservation Committee	Sydney Fischer	Executive Director	5/24/2024	email	The request was forwarded to Cayuga Preservation Committee historian Mike Long. To date there has been no further response.
Howland Farm Museum	Jodi Baldwin	Owner	5/25/2024 and 6/5/24	email	Ms. Baldwin asked for additional information, which was provided by EDR. To date there has been no further response.
Howland Stone Store Museum/Openore	Guy Garnsey	President	5/25/2024 and 6/5/24	email	Mr. Garnsey asked for additional information, which was provided by EDR. To date there has been no further response.
Cayuga-Owasco Lakes Historical Society	Esther Thornton	N/A	5/27/2024	website form and email	Ms. Thornton asked for additional information, which was provided by EDR. To date there has been no further response.
Cayuga Museum of History and Art	Kirsten Gosch	Executive Director	5/25/2024 and 6/5/24	email	To date there has been no response from the museum.
Cayuga County	Ruth Bradley	County Historian	5/25/2024 and 6/5/24	email	To date there has been no response from Ms. Bradley.
Town of Genoa	Shannon Armstrong	Town Historian	5/25/2024 and 6/5/24	email	To date there has been no response from Ms. Armstrong.
Genoa Historical Association and Museum	Sean Corbin	President	5/31/2024	website form	To date there has been no response from the museum.
Town of Ledyard	Judy Furness	Town Historian	5/25/2024 and 6/5/24	email	To date there has been no response from Ms. Furness.
Town of Locke	Esther Thornton	Town Historian	5/25/2024 and 6/5/24	email	To date there has been no response from Ms. Thornton.

Municipality or Organization	Contact	Title	Date(s) of Outreach	Mode(s) of Outreach	Outcome
Town and Village of Moravia	Arlene Murphy	Town and Village Historian	5/25/2024 and 6/5/24	email	Town Clerk Marissa Richards forwarding EDR's outreach request to the Cayuga-Owasco Lakes Historical Society (see above).
Town of Scipio	Laura Wallenbeck	Town Historian	5/25/2024 and 6/5/24	email	To date there has been no response from Ms. Wallenbeck.
Town of Venice	Phyllis Stanton	Town Historian	5/25/2024 and 6/5/24	email	Ms. Stanton identified six resources which were not previously recorded in CRIS, and corrected location information for two previously identified resources.
Town of Niles	Lorie DeWitt-Antilla	Town Historian	5/25/2024 and 6/5/24	email	To date there has been no response from Ms. DeWitt-Antilla.
Town of Fleming	Brian Lynn	Town Historian	5/25/2024 and 6/5/24	email	To date there has been no response from Mr. Lynn.
Town of Owasco	Laurel Auchampaugh	Town Historian	5/25/2024 and 6/5/24	email	To date there has been no response from Ms. Auchampaugh.



**Figure 4. Previously Identified Historic Resources**

### 3.0 HISTORIC RESOURCES SURVEY RESULTS

#### 3.1 Criteria for Evaluating the Significance of Historic Resources

Historically significant properties are defined herein to include buildings, districts, objects, structures and/or sites that have been listed in the S/NRHP, as well as those properties that NYSHPO has formally determined are eligible for listing in the S/NRHP. Criteria set forth by the National Park Service for evaluating historic properties (36 CFR 60.4) state that a historic building, district, object, structure, or site is significant (i.e., eligible for listing in the S/NRHP) if the property conveys (NPS, 1990; CFR, 2024):

The quality of significance in American history, architecture, archeology, engineering, and culture is present in districts, sites, buildings, structures, and objects that possess integrity of location, design, setting, materials, workmanship, feeling, and association and:

- (A) that are associated with events that have made a significant contribution to the broad patterns of our history; or
- (B) that are associated with the lives of persons significant in our past; or
- (C) that embody the distinctive characteristics of a type, period, or method of construction, or that represent the work of a master, or that possess high artistic values, or that represent a significant and distinguishable entity whose components may lack individual distinction; or
- (D) that have yielded, or may be likely to yield, information important in prehistory or history.

One National Historic Landmark (the Jethro Wood House, 90NR00099) and a total of 11 S/NRHP-listed resources are located within the Historic Resources Study Area. There are numerous nineteenth- and early-twentieth-century structures within the Historic Resources Study Area and APE for Visual Effects that have not been previously evaluated by NYSHPO for S/NRHP eligibility, primarily including farmsteads, residences, and commercial buildings. Historic farmhouses within the APE for Visual Effects and Historic Resources Study Area are typically Federal, Greek Revival, Italianate, or vernacular residences derived from these styles, with occasional Queen Anne-style decorative elements. These types of resources are typically determined S/NRHP-eligible under S/NRHP Criterion C (i.e., they “embody the distinctive characteristics of a type, period, or method of construction” [CFR, 2024]), and often derive their significance from being representative examples of vernacular nineteenth-century and early twentieth-century architectural styles or building types that retain their overall integrity of design and materials.

A total of 28 cemeteries dating to the nineteenth century which have not been previously evaluated by NYSHPO to determine if they are S/NRHP-eligible are located within the Historic Resources Study Area and APE for Visual Effects. Cemeteries are not typically eligible for listing unless they satisfy S/NRHP Criteria Consideration D which stipulates a cemetery may be eligible “if it derives its primary significance from graves of persons of transcendent importance, from age, from distinctive design features, or from association with historic events” (NPS, 1990). The architectural integrity of historic resources throughout the Historic Resources Study Area is highly variable, with most showing noticeable alteration to materials and form, thereby compromising their potential historic integrity and S/NRHP eligibility.

### 3.2 Historic Resources Survey Methods

EDR conducted a historic resources survey of the Facility's APE for Visual Effects in accordance with the methodology described in the *Phase IA Historic Resources Survey Methodology* (EDR, 2024) and based on the NYSHPO *Wind Guidelines* (NYSHPO, 2006) along with recent NYSHPO guidance on cultural resources surveys for wind energy projects (NYSHPO, 2023). The historic resources survey included review of previous historic resources surveys within the APE for Visual Effects (Section 2.2), consultation with NYSHPO and local stakeholders (Section 2.4), site visits to identify and evaluate potential historic resources within the APE for Visual Effects, and supplemental research on specific historic properties (as necessary).

Historic resources survey fieldwork included systematically walking and/or driving public roads and rights-of-way to photograph and evaluate the S/NRHP eligibility of resources within the Historic Resources Study Area and APE for Visual Effects. The historic resources survey fieldwork was conducted on May 16 through July 16, 2024. When properties that appeared to satisfy S/NRHP eligibility criteria were identified, the existing conditions of the property were documented by EDR's architectural historians. Photographs of the building(s) (and associated property when necessary) and field notes describing the style, physical characteristics and materials (e.g., number of stories, plan, external siding, roof, foundation, and sash), condition, physical integrity, and other noteworthy characteristics were recorded for each resource. The digital Trekker survey forms were submitted to NYSHPO for review on August 8, 2024.

EDR's evaluation of historic resources within the Historic Resources Study Area and APE for Visual Effects focused on the physical condition and integrity (with respect to design, materials, feeling, and association) to assess the potential architectural significance of each resource. Note that all properties included in the historic resources survey were photographed and assessed from public rights-of-way. The condition and integrity of all resources were evaluated based solely on the visible exterior of the structures. No inspections or evaluations requiring access to the interior of buildings, or any portion of private property, were conducted as part of this assessment. In accordance with the NYSHPO *Wind Guidelines*, buildings that were not sufficiently old (i.e., are less than 50 years in age), that lacked historic or architectural integrity, or have been evaluated by EDR's architectural historians as lacking historical or architectural significance were *not* included in or documented during the survey.

### 3.3 Evaluation of Previously Identified Historic Resources

A total of 148 previously identified historic resources located within the Historic Resources Study Area were identified using the CRIS website and through review of previous historic resources surveys. Of these 148 resources, 83 are located within the APE for Visual Effects. As described in Section 3.2, EDR staff reviewed these resources as part of historic resources survey fieldwork to document their current condition and evaluate their eligibility relative to S/NRHP eligibility criteria. The 65 previously identified resources located within the Historic Resources Study Area but outside the APE for Visual Effects were not assessed for S/NRHP eligibility due to their having no anticipated visual impacts. These 65 resources are enumerated in Attachment B with "N/A" entered in the S/NRHP Eligibility Recommendation field and are depicted on Attachment C as "Resource Without Anticipated Visual Impact". The results of the historic resources survey are presented below.



### National Historic Landmarks

One National Historic Landmark, the Jethro Wood House (90NR00099), is located within the Historic Resources Study Area and APE for Visual Effects. The house, built ca. 1800, was the home of Jethro Wood (1774-1834), an inventor who patented an iron plow with standardized, interchangeable parts in 1819 (Greenwood, 1976). The two-story, wood-frame, Federal-style residence retains sufficient integrity of location, setting, design, materials, feeling, and association to convey its significance for its connection to Jethro Wood. EDR recommends no change in status for the Jethro Wood House.

### S/NRHP-Listed Resources

A total of 23 S/NRHP-Listed resources are located within the Historic Resources Study Area; of these 23 resources, 10 are located within APE for Visual Effects (including three historic districts). No change in S/NRHP status is recommended by EDR for these 10 resources.

### S/NRHP-Eligible Resources

A total of 22 resources previously determined to be S/NRHP-Eligible by NYSHPO are located within the Historic Resources Study Area; of these 22 resources, 12 are located within the APE for Visual Effects. EDR found one of these resources to be no longer extant. One resource is recommended to no longer meet S/NRHP eligibility criteria. No change in S/NRHP status is recommended by EDR for the remaining 10 resources.

### Resources with Undetermined S/NRHP Eligibility

A total of 102 previously identified resources for which there is no formal S/NRHP eligibility determination are located within the Historic Resources Study Area; of these 102 resources, 60 are located within the APE for Visual Effects. Of these 60 resources, EDR recommends that 43 meet S/NRHP eligibility criteria. Five resources were found to be no longer extant, and two resources (both cemeteries) could not be evaluated due to a lack of visibility from the public right-of-way. EDR recommends that the remaining 10 resources do not meet S/NRHP eligibility criteria.

## **3.4 Locally Identified Historic Resources**

As described in Section 2.4, six resources located within the Historic Resources Study Area and APE for Visual Effects which were not previously identified in CRIS were identified through outreach to local stakeholders. Of these six resources, EDR recommends that four meet S/NRHP eligibility criteria and two resources (both cemeteries) could not be evaluated by EDR due to their inaccessibility (located on private property) and lack of visibility from the public right-of-way.

Survey results are enumerated in Attachment B. The locations of all previously identified and locally identified resources are depicted in Attachment C and Trekker Survey Forms with photographs are included as Attachment D.



### **3.5 Newly Identified Historic Resources**

In addition to the previously identified historic resources, EDR conducted a field survey for the purpose of identifying potentially S/NRHP-eligible resources within the Historic Resources Study Area and APE for Visual Effects that had not been previously documented or identified through outreach to local stakeholders. A total of 57 newly identified resources within the APE for Visual Effects which appear to meet S/NRHP eligibility criteria were identified, including two historic districts, 21 farmsteads, 14 residences, four cemeteries, six lakefront cottages, four summer camps, one rural nineteenth-century schoolhouses, one railroad depot, one stone barn, one grange hall, one early-twentieth-century rural factory, and one early-twentieth-century public school. In addition, two newly identified resources (one cemetery and one nineteenth-century farmstead) could not be fully evaluated by EDR due to their inaccessibility (located on private property) and lack of visibility from the public right-of-way. These resources are enumerated in Attachment B, with locations depicted in Attachment C and Trekker Survey Forms with photographs included as Attachment D.

### **3.6 Representative Resources Over 50 Years Old**

As part of the historic resources survey fieldwork, EDR photographed representative previously unidentified resources over 50 years of age within the Historic Resources Study Area that, in the opinion of EDR's architectural historians, did not meet S/NRHP eligibility criteria. The purpose was to document the most common and representative resource types within the Historic Resources Study Area.

Buildings that were photographed were over 50 years old and represented a range of qualities that did not warrant further investigation such as a lack of integrity due to inappropriate alterations and/or lack of architectural significance. Examples include nineteenth-century farmsteads with period residences (Figures 5-6), nineteenth-century farm residences without surviving agricultural buildings (Figures 7-8), nineteenth- and twentieth-century agricultural buildings without surviving farm residences (Figures 9-10), nineteenth- and early-twentieth-century residences in hamlet and village settings (Figures 11-12), nineteenth-century commercial and civic/institutional buildings (Figures 13-14), late-nineteenth-century and early-twentieth-century lakefront cottages (Figures 15-16), mid-twentieth-century lakefront cottages (Figures 17-18), and mid-twentieth-century rural residences (Figures 19-20).



**Figure 5. Representative farmstead with an altered Greek Revival-style residence.**

4464 Duryea Street, Town of Niles. The resource lacks integrity of design, materials, feeling, and association due to alterations to the residence's porch, windows, and siding.



**Figure 6. Representative nineteenth-century farmstead with a Greek Revival-derived vernacular residence.**

3655 Holley Road, Town of Venice. The resource lacks integrity of design, materials, and association due to alterations to the residence's porch, siding, and windows.



**Figure 7. Representative nineteenth-century farm residence without surviving agricultural buildings.**

2980 Hunter Road, Town of Scipio. The resource lacks integrity of setting, design, materials, and association due to the loss of associated agricultural buildings and alterations to the residence's windows and siding.



**Figure 8. Representative nineteenth-century farm residence without surviving farm buildings.**

1979 NY-34B, Town of Venice. The resource lacks integrity of design, materials, feeling, and association due to the loss of period farm buildings and alterations to the porch, windows, and siding.



**Figure 9. Representative nineteenth-century barn without a surviving farm residence.**

3412 Sherwood Road, Town of Scipio. The resource lacks integrity of setting, design, association, and feeling due to the loss of period farm buildings and introduction of non-historic buildings.



**Figure 10. Representative nineteenth-century barn without a surviving farm residence.**

2185 Genoa-Venice Town Line Road, Town of Venice. The resource lacks integrity of setting, design, and association due to the loss of period farm buildings and the introduction of non-historic buildings.



**Figure 11. Representative nineteenth-century residence in a hamlet setting.**

3286 Long Hill Road, Town of Venice. The resource lacks integrity of design, materials, and association due to alterations to the siding, first-floor windows, and entrance.



**Figure 12. Representative nineteenth-century residence in a hamlet setting.**

2708 Center Road, Town of Scipio. The resource lacks integrity of design, materials, and association due to alterations to the siding, windows, and porch.





**Figure 13. Representative nineteenth-century rural schoolhouse.**

4093 Cork Street, Town of Scipio. The schoolhouse has lost integrity of design, materials, feeling, and association due to the addition of an overhead door and alterations to windows and siding.



**Figure 14. Representative nineteenth-century commercial building.**

3392 NY-34B, Town of Scipio. This former mid-nineteenth-century hotel has lost integrity of design, materials, and association due to the removal of porches and the alteration of windows, doors, and siding.



**Figure 15. Representative late-nineteenth- or early-twentieth-century lakefront cottage.**

Fire Lane 28, Town of Scipio. The resource has lost integrity of design, materials, and association through the alteration of the porch, windows, and siding.



**Figure 16. Representative late-nineteenth- or early-twentieth-century lakefront cottage.**

405 Long Point On Owasco, Town of Niles. The resource has lost integrity of design, materials, and association through the alteration of the windows, doors, and siding, as well as out-of-scale additions.



**Figure 177. Representative mid-twentieth-century lakefront cottages.**

Indian Cove, Town of Moravia. These residences represent a common typology and do not appear to be historically or architecturally significant. In addition, many have been altered through the addition of upper floors and/or introduction of non-historic materials.



**Figure 18. Representative mid-twentieth-century lakefront cottage.**

4538 NY-38, Town of Scipio. The ca.-1940 cottage has lost integrity of design, materials, and association through the alteration of the porch, siding, and windows.



**Figure 19. Representative mid-twentieth-century rural residence.**

3922 Mathers Road, Town of Venice. The resource does not appear to be historically or architecturally significant.



**Figure 20. Representative mid-twentieth-century rural residence.**

3223 Burtless Road, Town of Scipio. The resource does not appear to be historically or architecturally significant.

Resources less than 50 years of age are eligible for listing in the S/NRHP only if they are of exceptional importance, i.e., they meet National Register Criteria Consideration G (NPS, 1990). No resources less than 50 years old meeting National Register Criteria Consideration G were identified as part of the historic resources survey fieldwork. Resources within the Historic Resources Study Area and APE for Visual Effects that are less than 50 years old include agricultural buildings, commercial buildings, Ranch-style residences, prefabricated and modular residences, and residences of the early twenty-first century.



## 4.0 HISTORIC RESOURCES EFFECTS ASSESSMENT

### 4.1 Visual Setting of Historic Resources Within the APE for Visual Effects

The Facility is proposed in a rural part of Cayuga County. The setting of the Historic Resources Study Area is characterized by rolling terrain. The majority of the Historic Resources Study Area has a rural, agrarian setting characterized by a mix of open farm fields and forest with scattered farmsteads, residences, and agricultural buildings. The transportation network in this setting consists of county and town roads in a grid pattern with variations responding to the natural topography. Views and vistas from these roadways range from expansive, unobstructed views (particularly at higher elevations) to views limited by terrain, hedgerows, and woodlots.

Further analysis of the visual setting within a five-mile-radius visual study area will be provided in a Visual Impact Assessment (VIA) to be included in the Article VIII Application for the Facility.

### 4.2 Potential Effect on Historic Resources

No direct physical impacts to historic architectural resources will occur as a result of the Facility. The Facility's potential effect on a given historic property would be a change (resulting from the introduction of wind turbines and/or other Facility components) in the property's setting. As it pertains to historic properties, *setting* is defined as "the physical environment of a historic property" and is one of seven aspects of a property's *integrity*, which refers to the "ability of a property to convey its significance" (NPS, 1990). The other aspects of integrity include location, design, materials, workmanship, feeling, and association (NPS, 1990). The potential effect resulting from the introduction of Facility components into the visual setting for any historic or architecturally significant property is dependent on a number of factors including distance, visual dominance, orientation of views, viewer context and activity, and the types and density of modern features in the existing view (such as buildings/residences, existing wind turbines, overhead electrical transmission lines, cellular towers, billboards, highways, and silos).

The Federal Regulations entitled "Protection of Historic Resources" (36 CFR 800) include in Section 800.5(2) a discussion of potential adverse effects on historic resources. The following types of effects apply to the proposed Facility:

Adverse effects on historic properties include, but are not limited to: [items i-iii do not apply]; (iv) Change of the character of the property's use or of physical features within the property's setting that contribute to its historic significance; (v) Introduction of visual, atmospheric or audible elements that diminish the integrity of the property's significant historic features; [items vi-vii do not apply] (CFR, 2024).

The implementing regulations for New York State Parks, Recreation and Historic Preservation Law, Section 14.09 (9NYCRR §428.7) state:

- a. In determining whether an undertaking will have an adverse impact on eligible or register property, the commissioner shall consider whether the undertaking is likely to cause:
  1. destruction or alteration of all or part of the property;
  2. isolation or alteration of the property's environment;

3. introduction of visual, audible or atmospheric elements which are out of character with the property or alter its setting;
4. neglect of the property resulting in its deterioration or destruction.

According to the New York State Department of Environmental Conservation (NYSDEC) Visual Policy, simple visibility of the Facility from any of the viewing locations does not imply detrimental effect. The policy specifically states "Aesthetic impact occurs when there is a detrimental effect on the perceived beauty of a place or structure. Significant aesthetic impacts are those that cause a diminishment of the public enjoyment and appreciation of an inventoried resource, or one that impairs the character or quality of such a place" (NYSDEC, 2019).



## 5.0 SUMMARY

### 5.1 Summary of Historic Resources Survey

On behalf of the Applicant, EDR has prepared this Historic Resources Survey Report for the proposed Agricola Wind Project, located in the Towns of Venice and Scipio in Cayuga County, New York.

A total of 148 resources located within the Historic Resources Study Area and APE for Visual Effects were documented in the historic resources survey. The results of the survey are summarized as follows:

- A total of 83 resources within the Historic Resources Study Area and APE for Visual Effects were previously identified in the CRIS database or through review of previous historic resources surveys:
  - EDR recommends no change in status for the National Historic Landmark Jethro Wood House (90NR00099).
  - EDR recommends no change in status for the 10 S/NRHP-listed resources.
  - Of the 12 resources previously determined to be S/NRHP-eligible by NYSHPO, EDR found that one resource is no longer extant, recommends that one resource no longer meets S/NRHP eligibility criteria, and recommends that the remaining 10 resources meet S/NRHP eligibility criteria.
  - Of the 60 resources for which S/NRHP eligibility has not been formally determined by NYSHPO, EDR recommends that 43 meet S/NRHP eligibility criteria and 10 do not meet S/NRHP eligibility criteria; five resources were found to be no longer extant; and two resources could not be evaluated due to their inaccessibility and lack of visibility from the public right-of-way.
- A total of six resources not previously identified in CRIS within the Historic Resources Study Area were identified through outreach to local stakeholders. EDR recommends that four of these resources meet S/NRHP eligibility criteria; the remaining two resources could not be evaluated due to their lack of visibility from the public right-of-way.
- A total of 57 newly identified resources within the APE for Visual Effects are recommended by EDR to meet S/NRHP eligibility criteria, including two historic districts. Two newly identified resources could not be fully evaluated due to their lack of visibility from the public right-of-way.

The results of the historic resources survey are provided in Attachment B. The locations of all historic resources are depicted in Attachment C. Representative photographs of resources over 50 years of age that do not appear to meet S/NRHP eligibility criteria are included in Section 3.6.

In addition to the documentation provided in this report, a narrative description and photographs for all surveyed historic resources have been entered into Trekker survey forms (included in this report as Attachment D) and submitted via NYSHPO's online CRIS portal for review by NYSHPO staff, along with an annotated properties list of all properties assessed as part of this survey in Microsoft Excel format (included in this report as Attachment B).

## 5.2 Summary of Facility's Potential Effect on Historic Resources

No direct physical impacts to historic architectural resources listed in or eligible for listing in the S/NRHP will occur as a result of construction of the Facility. No further historic resource surveys are recommended for the Facility.

The Facility's potential effect on historic resources would be a change (resulting from the introduction of wind turbines and associated infrastructure) in the visual setting associated with a given historic resource. The potential effect of the Facility on the visual setting associated with historic resources is highly variable and is dependent on a number of factors including the distance to the project, the extent to which the Facility is screened or partially screened by buildings, trees, or other objects, and the amount of existing visual clutter and/or modern intrusions in the view. It is also important to note that visual setting may or may not be an important factor contributing to a given property's historical significance.

Per the requirements of 19 NYCRR Part 1100-2.10, the historic resources survey will assist with the identification of visually sensitive sites and key viewpoints for the development of visual simulations, to be included in Exhibit 8 (Visual Impacts) of the Article VIII Application. EDR is requesting that NYSHPO review the results of this historic resources survey report and provide determinations of eligibility.

Much of the Facility's APE for Visual Effects is located in areas consisting of farmsteads and agricultural landscapes with a traditional rural character. These landscape elements include open fields, pastures, hedgerows, and other rural landscape features. Many of these open areas extend beyond the APE for Visual Effects, cross municipal and parcel boundaries, are inaccessible to the public, and are not associated with any specific historic resources previously identified by NYSHPO. Consequently, the various rural landscapes and open agricultural areas located within the APE for Visual Effects were not evaluated as specific historic resources as a part of this survey. However, the potential effects of the Facility on these rural landscapes will be evaluated as part of a Visual Impact Assessment to be included as part of the Article VIII Application for the Facility.

In addition, the historic resources survey report and subsequent visual effects information to be included in the Article VIII Application will provide the basis for ongoing consultation with NYSHPO, ORES, and other applicable consulting parties regarding avoidance, minimization, and/or potential mitigation for visual impacts of the Facility on aboveground historic resources.

## 6.0 REFERENCES

- Beers, F.W. 1875. *County Atlas of Cayuga, New York*. Walker & Jewett, New York, NY. Available at: <https://historicmapworks.com/Atlas/US/7145/Cayuga+County+1875/> (Accessed July 2024).
- Burr, D.H. 1829. *Map of the County of Cayuga*. D. H. Burr, New York, NY. David Rumsey Historical Map Collection. Available at: <https://www.davidrumsey.com/> (Accessed July 2024).
- Burr, D.H. 1840. *Map of the County of Madison*. D. H. Burr. New York, NY. David Rumsey Historical Map Collection. Available at: <http://www.davidrumsey.com/> (Accessed July 2024).
- Cayuga County Historical Society (CCHS). 1908. *History of Cayuga County, New York*. Cayuga County Historical Society. Auburn, NY.
- Cobblestone Museum. 2024. Cobblestone Info Base. Available at: <https://www.cobblestonemuseum.org/cobblestone-info-base/> (Accessed July 2024).
- Code of Federal Regulations (CFR). 2024. Title 36 - Parks, Forests, and Public Property, Chapter I - National Park Service, Department of the Interior, Part 60 - National Register of Historic Places, Section 60.4 - Criteria For Evaluation. Available at: <https://www.ecfr.gov/current/title-36/chapter-I/part-60?toc=1> (Accessed July 2024).
- De Witt, S. 1792. *State-Map of New-York*. Albany, New York. Norman B. Leventhal Map & Education Center, Boston Public Library. Available at: <https://collections.leventhalmap.org/search/commonwealth:z603vg68n> (Accessed July 2024).
- Eisenstadt, P., ed. 2005. *The Encyclopedia of New York State*. Edited by P. Eisenstadt. Syracuse University Press, Syracuse, NY.
- Environmental Design and Research Landscape Architecture, Engineering, & Environmental Services, D.P.C. (EDR). 2021a. *Request for Consultation, Agricola Wind Project, Towns of Venice, Scipio, and Moravia, Cayuga County, New York*. Prepared for Liberty Renewables Inc. by Environmental Design and Research Landscape Architecture, Engineering, & Environmental Services, D.P.C., Syracuse, NY.
- EDR. 2021b. RE: Proposed Agricola Wind Project, Cultural Resources Surveys and Environmental Review. Correspondence from EDR to Cayuga Nation and Onondaga Nation. Via email, June 15, 2021.
- EDR. 2024. *Phase IA Historic Resources Survey Methodology, Agricola Wind Project, Towns of Venice, Scipio, and Moravia, Cayuga County, New York*. Prepared for Liberty Renewables Inc. by Environmental Design and Research Landscape Architecture, Engineering, & Environmental Services, D.P.C., Syracuse, NY.
- Fitch, James Marston. 1966. *American Building: The Historic Forces that Shaped It*. Houghton Mifflin Company. Boston, MA.
- Geil, Samuel. 1853. *Map of Cayuga County, New York*. Samuel Geil. Philadelphia, PA.
- Gray, O.W., and G.D. Lothrop. 1859. *Map of Cayuga and Seneca Counties, New York*. A.R.Z. Dawson. Philadelphia, PA.

Greenwood, R. 1976. Jethro Wood House. National Register of Historic Places Inventory – Nomination Form. United States Department of the Interior, National Park Service.

Hamlin, Talbot. 1944. *Greek Revival Architecture in America*. Oxford University Press, New York, NY.

National Park Service (NPS). 1990. *How to Apply the National Register of Historic Places Criteria for Evaluation*. National Register Bulletin No. 15. National Register Branch, National Park Service, U.S. Department of the Interior, Washington, D.C. Available at: [https://www.nps.gov/subjects/nationalregister/upload/NRB-15\\_web508.pdf](https://www.nps.gov/subjects/nationalregister/upload/NRB-15_web508.pdf) (Accessed July 2024).

New York Codes, Rules and Regulations (NYCRR). 2017. 9NYCRR §428.7. Available at: <https://parks.ny.gov/documents/inside-our-agency/Rulemaking/OPRHPRegulations9NYCRRSubtitleI.pdf> (Accessed July 2024).

NYCRR. 2024. 19 NYCRR Part 1100. Available at: <https://ores.ny.gov/chapter-xi-title-16-nycrr-part-1100-generation-siting-effective-2024-07-17> (Accessed July 2024).

New York State Department of Environmental Conservation (NYSDEC). 2019. *Assessing and Mitigating Visual and Aesthetic Impacts*. Program Policy DEP-00-2. Division of Environmental Permits, New York State Department of Environmental Conservation, Albany, NY. Available at: [https://www.dec.ny.gov/docs/permits\\_ej\\_operations\\_pdf/visualpolicydep002.pdf](https://www.dec.ny.gov/docs/permits_ej_operations_pdf/visualpolicydep002.pdf) (Accessed July 2024).

New York State Office of Parks, Recreation, and Historic Preservation (NYSHPO). 2006. *New York State Historic Preservation Office Guidelines for Wind Farm Development Cultural Resources Survey Work*. New York State Office of Parks, Recreation, and Historic Preservation, Waterford, NY.

NYSHPO. 2021. Review correspondence from James Carter (NYSHPO). NYSOPRHP, Waterford, NY. Via CRIS, July 2, 2021.

NYSHPO. 2023. RE: NYSHPO Wind Guidelines Update. Correspondence from Chelsea Towers (NYSHPO) to Grant Johnson (EDR) via email, August 7, 2023.

NYSHPO. 2024a. Cultural Resources Information System (CRIS). Available at: <http://cris.parks.ny.gov> (Accessed July 2024).

NYSHPO. 2024b. Review correspondence from Virginia Bartos (NYSHPO). NYSOPRHP, Waterford, NY. Via CRIS, April 26, 2024.

Storke, Eliot. 1879. *History of Cayuga County, New York*. D. Mason and Co. Syracuse, NY.

Trigger, B.G., ed. 1978. *Handbook of North American Indians*, Vol. 15: Northeast. Edited by Bruce G. Trigger, Smithsonian Institution Press, Washington, D.C.

United States Geological Survey (USGS). 1902a. *Auburn, NY*. 1:62,500 USGS Topographic Quadrangle. New York. 15-Minute Series (Topographic). United States Department of the Interior, Geological Survey, Washington, D.C.

USGS. 1902b. *Genoa, NY*. 1:62,500 USGS Topographic Quadrangle. New York. 15-Minute Series (Topographic). United States Department of the Interior, Geological Survey, Washington, D.C.

USGS. 1902c. *Moravia, NY*. 1:62,500 USGS Topographic Quadrangle. New York. 15-Minute Series (Topographic). United States Department of the Interior, Geological Survey, Washington, D.C.

USGS. 1902d. *Skaneateles, NY*. 1:62,500 USGS Topographic Quadrangle. New York. 15-Minute Series (Topographic). United States Department of the Interior, Geological Survey, Washington, D.C.

USGS. 1943a. *Genoa, NY*. 1960 edition, 1:31,680 USGS Topographic Quadrangle. New York. 7.5-Minute Series (Topographic). United States Department of the Interior, Geological Survey, Washington, D.C.

USGS. 1943b. *Moravia, NY*. 1960 edition, 1:31,680 USGS Topographic Quadrangle. New York. 7.5-Minute Series (Topographic). United States Department of the Interior, Geological Survey, Washington, D.C.

USGS. 1943c. *Owasco, NY*. 1960 edition, 1:31,680 USGS Topographic Quadrangle. New York. 7.5-Minute Series (Topographic). United States Department of the Interior, Geological Survey, Washington, D.C.

USGS. 1943d. *Scipio, NY*. 1960 edition, 1:31,680 USGS Topographic Quadrangle. New York. 7.5-Minute Series (Topographic). United States Department of the Interior, Geological Survey, Washington, D.C.

Wellman, J. 2005. *Uncovering the Freedom Trail in Auburn and Cayuga County, New York*. Prepared for the City of Auburn Historic Resources Review Board and the Cayuga County Historian's Office by Historical New York Research Associates, 2004-2005.

Wellman, J. 2019. *Women's Suffrage in Central New York*. Prepared for the Ontario County Historical Society by Historical New York Research Associates, August 2019.

## **Attachment A**

NYSHPO Correspondence

Close

## View and/or Address a Response

Project 21PR03987: Agricola Wind Project (PUU8J4QA3D3N)

View Project

Please accept the following information below as the consolidated response from NYS SHPO for the above referenced submission.

### Review Responses

Reviewer	Review Type	Response
Tim Lloyd	Archaeology	Andrew, OPRHP concurs with EDR's proposed archaeological investigation (see attached letter). Please review the specific information request(s) below and click the Process button to respond to each request.
James Carter	Survey and Evaluation	In order for SHPO to complete our evaluation of the historic significance of all buildings/structures/districts within or adjacent to your project area, we need further information. Please review the specific information request(s) below and click the Process button to respond to each request.

### Information Requests

Process	Status	Reviewer	Review Type	Request Type	Request Entity	Request Item	Request Description
	Information Requested	Tim Lloyd	Archaeology	Request a New Attachment, Photo, or Survey for this Consultation Project		Archaeology Survey	Please submit the results of the Phase IA archaeological investigation
	Information Requested	Tim Lloyd	Archaeology	Request a New Attachment, Photo, or Survey for this Consultation Project		Attachment	Please submit a shapefile showing the project components
	Information Requested	James Carter	Survey and Evaluation	Request a New Trekker Survey			Please submit a Trekker survey of above-ground historic resources based on GIS modeling within five-miles from each side of the project area boundary. This survey request is for buildings and structures 50 years of age or older, as well as previously identified CRIS resources that are eligible or listed. To begin the survey, you will first be asked to submit a survey Methodology and proposed survey area by clicking the process button (green cog) which will open the Trekker Survey Submission in a separate browser window. After methodology approval by SHPO, you will be granted access to specific field inventory forms via the Survey123 app, as well as Trekker Manager. A separate CRIS request for the survey report will also be sent at this time to be fulfilled once field work has been completed. Please supply the standard survey report consisting of an overview, context and an assessment of any resources that may be eligible. Contact James Carter at james.carter@parks.ny.gov with any questions. Thank you.

Project 21PR03987: Agricola Wind Project (HSL59P9T94T4)


View Project

Please accept the following information below as the consolidated response from NYS SHPO for the above referenced submission.

Review Responses

Reviewer	Review Type	Response
Virginia Bartos	Survey and Evaluation	In order for SHPO to fully review and process the survey that was submitted, we need further information. Please review the specific information request(s) below and click the Process button to respond to each request.

Information Requests

Process	Status	Reviewer	Review Type	Request Type	Request Entity	Request Item	Request Description
	Information Requested	Virginia Bartos	Survey and Evaluation	Request a New Attachment for an Existing Survey	Historic Resources Survey, Agricola Wind Project, Towns of Venice and Sciplo, Cayuga County, New York (24SR00220)	Attachment	Please upload the Survey Report after the Trekker Surveys are complete.



## **Attachment B**

### Historic Resources Survey Results Table

Survey ID	Identification Number	Address	Municipality	County	Resource Name and/or Description	Source	Existing S/NRHP Eligibility Status (NYSHPO)	S/NRHP Eligibility Recommendation	Distance from Facility Site (miles)	Potential Facility Visibility
1	90NR00099	1636 Poplar Ridge Road	Town of Ledyard	Cayuga	Jethro Wood House	Previously Identified	National Historic Landmark	National Historic Landmark	3.9	Yes
2	08NR05844	1395 Sherwood Road	Town of Ledyard	Cayuga	Augustus Howland House	Previously Identified	S/NRHP-Listed	S/NRHP-Listed	4.1	Yes
3	05NR05510	2960 Brick Church Road	Town of Ledyard	Cayuga	North Street Friends Meetinghouse	Previously Identified	S/NRHP-Listed	N/A	4.3	No
4	05NR05509	1781 Sherwood Road	Town of Scipio	Cayuga	Slocum and Hannah Howland House	Previously Identified	S/NRHP-Listed	N/A	2.8	No
5	94NR00534	2956 NY-34B	Town of Scipio	Cayuga	Howland Cobblestone Store	Previously Identified	S/NRHP-Listed	S/NRHP-Listed	2.8	Yes
6	08NR05843	1882 Sherwood Road	Town of Scipio	Cayuga	Job and Deborah Otis House	Previously Identified	S/NRHP-Listed	S/NRHP-Listed	2.5	Yes
7	07NR05805	Sherwood Road and NY-34B	Town of Scipio	Cayuga	Sherwood Equal Rights Historic District	Previously Identified	S/NRHP-Listed	S/NRHP-Listed	2.8	Yes
8	95NR00879	South Main Street	Village of Moravia	Cayuga	Moravia Union Cemetery	Previously Identified	S/NRHP-Listed	N/A	4.2	No
9	95NR00788	17 Aurora Street	Village of Moravia	Cayuga	Greek Revival-style house	Previously Identified	S/NRHP-Listed	N/A	3.8	No

Survey ID	Identification Number	Address	Municipality	County	Resource Name and/or Description	Source	Existing S/NRHP Eligibility Status (NYSHPO)	S/NRHP Eligibility Recommendation	Distance from Facility Site (miles)	Potential Facility Visibility
10	95NR00789	18 Aurora Street	Village of Moravia	Cayuga	Greek Revival-style house	Previously Identified	S/NRHP-Listed	N/A	3.7	No
11	95NR00790	20 Aurora Street	Village of Moravia	Cayuga	Greek Revival-style house	Previously Identified	S/NRHP-Listed	N/A	3.7	No
12	95NR00787	7 Aurora Street	Village of Moravia	Cayuga	McGeer, John, House	Previously Identified	S/NRHP-Listed	N/A	3.8	No
13	95NR00796	73 South Main Street	Village of Moravia	Cayuga	Queen Anne Residence	Previously Identified	S/NRHP-Listed	N/A	3.9	No
14	95NR00797	63 South Main Street	Village of Moravia	Cayuga	Italianate Residence	Previously Identified	S/NRHP-Listed	N/A	3.9	No
15	95NR00798	59 South Main Street	Village of Moravia	Cayuga	Tuthill-Green House	Previously Identified	S/NRHP-Listed	N/A	3.9	No
16	95NR00793	21 West Cayuga Street	Village of Moravia	Cayuga	Greek Revival-style house	Previously Identified	S/NRHP-Listed	N/A	3.7	No
17	95NR00794	31 West Cayuga Street	Village of Moravia	Cayuga	Greek Revival-style house	Previously Identified	S/NRHP-Listed	N/A	3.6	No
18	95NR00795	37 West Cayuga Street	Village of Moravia	Cayuga	Italianate Residence	Previously Identified	S/NRHP-Listed	N/A	3.5	No

Survey ID	Identification Number	Address	Municipality	County	Resource Name and/or Description	Source	Existing S/NRHP Eligibility Status (NYSHPO)	S/NRHP Eligibility Recommendation	Distance from Facility Site (miles)	Potential Facility Visibility
19	95NR00792	12 West Cayuga Street	Village of Moravia	Cayuga	Sager House	Previously Identified	S/NRHP-Listed	S/NRHP-Listed	3.7	Yes
20	95NR00799	52 South Main Street	Village of Moravia	Cayuga	Morse Farm	Previously Identified	S/NRHP-Listed	S/NRHP-Listed	4.0	Yes
21	95NR00813	15 East Cayuga Street	Village of Moravia	Cayuga	Italianate Duplex Residence	Previously Identified	S/NRHP-Listed	S/NRHP-Listed	3.8	Yes
22	95NR00791	12 East Cayuga Street	Village of Moravia	Cayuga	Henry Allen House	Previously Identified	S/NRHP-Listed	S/NRHP-Listed	3.8	Yes
23	92NR00358	North Main Street	Village of Moravia	Cayuga	North Main Street Historic District	Previously Identified	S/NRHP-Listed	S/NRHP-Listed	4.1	Yes
24	92NR00357	Church, Congress, Park, Allen, Smith, and South Main Streets	Village of Moravia	Cayuga	Church Street/Congress Street Historic District	Previously Identified	S/NRHP-Listed	S/NRHP-Listed	4.4	Yes
25	USN 01105.000001	4619 Wyckoff Road	Town of Fleming	Cayuga	Henry Wyckoff Farmstead	Previously Identified	S/NRHP-Eligible (NYSHPO Determined)	S/NRHP-Eligible (EDR Recommended)	4.0	Yes

Survey ID	Identification Number	Address	Municipality	County	Resource Name and/or Description	Source	Existing S/NRHP Eligibility Status (NYSHPO)	S/NRHP Eligibility Recommendation	Distance from Facility Site (miles)	Potential Facility Visibility
26	USN 01106.000036	1041 Maple Street	Town of Genoa	Cayuga	Gilkey House	Previously Identified	S/NRHP-Eligible (NYSHPO Determined)	S/NRHP-Eligible (EDR Recommended)	3.4	Yes
27	USN 01106.000031	10018 State Route 90	Town of Genoa	Cayuga	Greek Revival Residence	Previously Identified	S/NRHP-Eligible (NYSHPO Determined)	N/A	3.5	No
28	USN 01106.000074	1009 South Street	Town of Genoa	Cayuga	Greek Revival Residence	Previously Identified	S/NRHP-Eligible (NYSHPO Determined)	N/A	3.5	No
29	USN 01106.000023	1161 Bruton Road	Town of Genoa	Cayuga	Sullivan Hawkins House	Previously Identified	S/NRHP-Eligible (NYSHPO Determined)	Resource Not Extant	3.6	Yes
30	USN 01115.000008	3423 NY-34	Town of Scipio	Cayuga	I. Akin Farmstead	Previously Identified	S/NRHP-Eligible (NYSHPO Determined)	S/NRHP-Eligible (EDR Recommended)	0.7	Yes
31	USN 01108.000070	2487 NY 34B	Town of Venice	Cayuga	Hazard Library	Previously Identified	S/NRHP-Eligible (NYSHPO Determined)	S/NRHP-Eligible (EDR Recommended)	3.2	Yes
32	USN 01122.000019	2152 NY-34B	Town of Venice	Cayuga	Cyrenus Wheeler House	Previously Identified	S/NRHP-Eligible (NYSHPO Determined)	S/NRHP-Eligible (EDR Recommended)	3.4	Yes

Survey ID	Identification Number	Address	Municipality	County	Resource Name and/or Description	Source	Existing S/NRHP Eligibility Status (NYSHPO)	S/NRHP Eligibility Recommendation	Distance from Facility Site (miles)	Potential Facility Visibility
33	USN 01146.000138	161 Main Street	Village of Moravia	Cayuga	Italianate commercial building	Previously Identified	S/NRHP-Eligible (NYSHPO Determined)	S/NRHP-Eligible (EDR Recommended)	3.7	Yes
34	USN 01146.000146	178 North Main Street	Village of Moravia	Cayuga	Wolsey Residence	Previously Identified	S/NRHP-Eligible (NYSHPO Determined)	S/NRHP-Eligible (EDR Recommended)	3.7	Yes
35	USN 01146.000276	68 South Main Street	Village of Moravia	Cayuga	Moravia Central School	Previously Identified	S/NRHP-Eligible (NYSHPO Determined)	S/NRHP-Eligible (EDR Recommended)	4.0	Yes
36	USN 01146.000024	157 Main Street	Village of Moravia	Cayuga	Italianate commercial building	Previously Identified	S/NRHP-Eligible Resource (NYSHPO Determined)	N/A	3.8	No
37	USN 01146.000139	159 Main Street	Village of Moravia	Cayuga	Sylvan Lodge No. 41	Previously Identified	S/NRHP-Eligible Resource (NYSHPO Determined)	S/NRHP-Eligible (EDR Recommended)	3.8	Yes
38	USN 01146.000180	3 West Cayuga Street	Village of Moravia	Cayuga	Queen Anne Residence	Previously Identified	S/NRHP-Eligible Resource (NYSHPO Determined)	S/NRHP-Eligible (EDR Recommended)	4.3	Yes



Survey ID	Identification Number	Address	Municipality	County	Resource Name and/or Description	Source	Existing S/NRHP Eligibility Status (NYSHPO)	S/NRHP Eligibility Recommendation	Distance from Facility Site (miles)	Potential Facility Visibility
39	USN 01146.000027	147 Main Street	Village of Moravia	Cayuga	Jennings Store	Previously Identified	S/NRHP-Eligible Resource (NYSHPO Determined)	N/A	3.8	No
40	USN 01146.000026	146-150 Main Street	Village of Moravia	Cayuga	Hanling Building	Previously Identified	S/NRHP-Eligible Resource (NYSHPO Determined)	N/A	3.8	No
41	USN 01146.000141	142 Main Street	Village of Moravia	Cayuga	Italianate commercial building	Previously Identified	S/NRHP-Eligible Resource (NYSHPO Determined)	N/A	3.8	No
42	USN 01146.000143	116 Main Street	Village of Moravia	Cayuga	Italianate commercial building	Previously Identified	S/NRHP-Eligible Resource (NYSHPO Determined)	Not S/NRHP Eligible (EDR Recommended)	3.8	Yes
43	USN 01146.000185	33 West Cayuga Street	Village of Moravia	Cayuga	Italianate Residence	Previously Identified	S/NRHP-Eligible Resource (NYSHPO Determined)	N/A	3.6	No

Survey ID	Identification Number	Address	Municipality	County	Resource Name and/or Description	Source	Existing S/NRHP Eligibility Status (NYSHPO)	S/NRHP Eligibility Recommendation	Distance from Facility Site (miles)	Potential Facility Visibility
44	USN 01146.000133	65 Cayuga Street	Village of Moravia	Cayuga	Stone Mill (appears demolished)	Previously Identified	S/NRHP-Eligible Resource (NYSHPO Determined)	N/A	4.1	No
45	USN 01146.000100	6 Central Avenue	Village of Moravia	Cayuga	Moravia Republican Register Building	Previously Identified	S/NRHP-Eligible Resource (NYSHPO Determined)	N/A	3.8	No
46	USN 01146.000170	4 South Main St	Village of Moravia	Cayuga	Manufactured Residence	Previously Identified	S/NRHP-Eligible Resource (NYSHPO Determined)	N/A	4.2	No
47	USN 01120.000004	1686 NY-38	Town and Village of Moravia	Cayuga	Fillmore Glen State Park	Previously Identified	S/NRHP Eligibility Undetermined	S/NRHP-Eligible (EDR Recommended)	4.8	Yes
48	USN 01106.000001	886 NY-34	Town of Genoa	Cayuga	Main Farmstead	Previously Identified	S/NRHP Eligibility Undetermined	S/NRHP-Eligible (EDR Recommended)	4.3	Yes
49	N/A	Opposite 10382 NY-90	Town of Genoa	Cayuga	Genoa Rural Cemetery	Previously Identified	S/NRHP Eligibility Undetermined	N/A	3.6	No
50	N/A	Opposite 11121 NY-90	Town of Genoa	Cayuga	Pine Hollow Cemetery	Previously Identified	S/NRHP Eligibility Undetermined	N/A	4.6	No

Survey ID	Identification Number	Address	Municipality	County	Resource Name and/or Description	Source	Existing S/NRHP Eligibility Status (NYSHPO)	S/NRHP Eligibility Recommendation	Distance from Facility Site (miles)	Potential Facility Visibility
51	N/A	10026 State Route 90	Town of Genoa	Cayuga	Butcher Shop	Previously Identified	S/NRHP Eligibility Undetermined	N/A	3.5	No
52	USN 01106.000006	10117 NY-90	Town of Genoa	Cayuga	Queen Anne Residence	Previously Identified	S/NRHP Eligibility Undetermined	S/NRHP-Eligible (EDR Recommended)	3.4	Yes
53	USN 01106.000005	10085 NY-90	Town of Genoa	Cayuga	Glover House	Previously Identified	S/NRHP Eligibility Undetermined	S/NRHP-Eligible (EDR Recommended)	3.4	Yes
54	USN 01106.000007	10146 NY-90	Town of Genoa	Cayuga	Ames House	Previously Identified	S/NRHP Eligibility Undetermined	S/NRHP-Eligible (EDR Recommended)	3.5	Yes
55	N/A	Opposite 1576 Levanna Rd	Town of Ledyard	Cayuga	Evergreen Cemetery	Previously Identified	S/NRHP Eligibility Undetermined	S/NRHP-Eligible (EDR Recommended)	3.5	Yes
56	USN 01108.000010	Ledyard Road	Town of Ledyard	Cayuga	District School #11 (appears demolished)	Previously Identified	S/NRHP Eligibility Undetermined	N/A	4.2	No
57	USN 01108.000063	NY-34B	Town of Ledyard	Cayuga	Greek Revival-style house	Previously Identified	S/NRHP Eligibility Undetermined	N/A	4.2	No
58	N/A	Ledyard Road	Town of Ledyard	Cayuga	Ledyard Church Cemetery	Previously Identified	S/NRHP Eligibility Undetermined	N/A	4.1	No
59	USN 01108.000104	2297 Dixon Rd	Town of Ledyard	Cayuga	Peleg White House	Previously Identified	S/NRHP Eligibility Undetermined	N/A	4.6	No

Survey ID	Identification Number	Address	Municipality	County	Resource Name and/or Description	Source	Existing S/NRHP Eligibility Status (NYSHPO)	S/NRHP Eligibility Recommendation	Distance from Facility Site (miles)	Potential Facility Visibility
60	N/A	2050 Dixon Road	Town of Ledyard	Cayuga	John and Susan King House	Previously Identified	S/NRHP Eligibility Undetermined	N/A	4.6	No
61	USN 01108.000013	Dixon Road	Town of Ledyard	Cayuga	District School No. 7	Previously Identified	S/NRHP Eligibility Undetermined	Resource Not Extant	3.9	Yes
62	N/A	Behind 1694 Britt Rd	Town of Ledyard	Cayuga	Mosher Cemetery / Mendenhall Farm Cemetery	Previously Identified	S/NRHP Eligibility Undetermined	S/NRHP-Eligible (EDR Recommended)	4.0	Yes
63	N/A	Opposite 3497 Brick Church Rd	Town of Ledyard	Cayuga	Gifford Cemetery	Previously Identified	S/NRHP Eligibility Undetermined	S/NRHP-Eligible (EDR Recommended)	4.4	Yes
64	USN 01108.000014	1307 Levanna Road	Town of Ledyard	Cayuga	District School No. 5	Previously Identified	S/NRHP Eligibility Undetermined	N/A	4.4	No
65	N/A	East of 1320 Levanna Road	Town of Ledyard	Cayuga	Old Quaker Cemetery / Barber's Corners Cemetery	Previously Identified	S/NRHP Eligibility Undetermined	N/A	4.3	No
66	N/A	Opposite 1180 Sherwood Road	Town of Ledyard	Cayuga	Howland Cemetery	Previously Identified	S/NRHP Eligibility Undetermined	S/NRHP-Eligible (EDR Recommended)	4.7	Yes
67	N/A	East of 1427 Poplar Ridge Road	Town of Ledyard	Cayuga	Quaker Cemetery	Previously Identified	S/NRHP Eligibility Undetermined	S/NRHP-Eligible (EDR Recommended)	4.5	Yes

Survey ID	Identification Number	Address	Municipality	County	Resource Name and/or Description	Source	Existing S/NRHP Eligibility Status (NYSHPO)	S/NRHP Eligibility Recommendation	Distance from Facility Site (miles)	Potential Facility Visibility
68	N/A	1285 Levanna Road	Town of Ledyard	Cayuga	Taber House	Previously Identified	S/NRHP Eligibility Undetermined	N/A	4.5	No
69	USN 01112.000002	NY 38A	Town of Moravia	Cayuga	Bancroft Residence	Previously Identified	S/NRHP Eligibility Undetermined	N/A	4.4	No
70	USN 01112.000003	NY 38A	Town of Moravia	Cayuga	Goodrich House	Previously Identified	S/NRHP Eligibility Undetermined	N/A	4.5	No
71	N/A	NY 38A	Town of Moravia	Cayuga	Indian Mound Cemetery	Previously Identified	S/NRHP Eligibility Undetermined	N/A	4.3	No
72	N/A	NY-38A	Town of Moravia	Cayuga	St. Patricks Cemetery	Previously Identified	S/NRHP Eligibility Undetermined	N/A	4.4	No
73	N/A	Town Line Road	Town of Moravia	Cayuga	Baker Cemetery	Previously Identified	S/NRHP Eligibility Undetermined	N/A	2.8	No
74	N/A	3140 Rockefeller Road	Town of Moravia	Cayuga	Hewitt Cemetery	Previously Identified	S/NRHP Eligibility Undetermined	S/NRHP-Eligible (EDR Recommended)	2.2	Yes
75	USN 01113.000008	4200 Harter Road	Town of Niles	Cayuga	Peter M. Selover Home	Previously Identified	S/NRHP Eligibility Undetermined	Resource Not Extant	4.2	Yes
76	N/A	4572 Rockefeller Road	Town of Niles	Cayuga	Conklin Cemetery	Previously Identified	S/NRHP Eligibility Undetermined	S/NRHP-Eligible (EDR Recommended)	4.4	Yes

Survey ID	Identification Number	Address	Municipality	County	Resource Name and/or Description	Source	Existing S/NRHP Eligibility Status (NYSHPO)	S/NRHP Eligibility Recommendation	Distance from Facility Site (miles)	Potential Facility Visibility
77	USN 01113.000007	3396 Rockefeller Road	Town of Niles	Cayuga	J. Selover House	Previously Identified	S/NRHP Eligibility Undetermined	S/NRHP-Eligible (EDR Recommended)	2.2	Yes
78	N/A	Southeast of 3826 Oak Hill Road	Town of Niles	Cayuga	West Niles Rural Cemetery	Previously Identified	S/NRHP Eligibility Undetermined	S/NRHP-Eligible (EDR Recommended)	3.4	Yes
79	N/A	4250 Wyckoff Rd	Town of Scipio	Cayuga	Devine Cemetery	Previously Identified	S/NRHP Eligibility Undetermined	N/A	2.7	No
80	USN 01115.000006	3439 NY-34	Town of Scipio	Cayuga	Cayuga Lodge 221	Previously Identified	S/NRHP Eligibility Undetermined	Not S/NRHP Eligible (EDR Recommended)	0.7	Yes
81	USN 01115.000007	2805 Center Road	Town of Scipio	Cayuga	Saint Bernard's Catholic Church	Previously Identified	S/NRHP Eligibility Undetermined	Not S/NRHP Eligible (EDR Recommended)	0.6	Yes
82	USN 01115.000026	2430 Quarry Road	Town of Scipio	Cayuga	Manufactured home	Previously Identified	S/NRHP Eligibility Undetermined	Not S/NRHP Eligible (EDR Recommended)	1.7	Yes
83	USN 01115.000030	3768 Black Street	Town of Scipio	Cayuga	Marsh Farmstead	Previously Identified	S/NRHP Eligibility Undetermined	Not S/NRHP Eligible (EDR Recommended)	2.0	Yes
84	USN 01115.000031	2627 Quarry Road	Town of Scipio	Cayuga	Nineteenth-century farmhouse	Previously Identified	S/NRHP Eligibility Undetermined	Not S/NRHP Eligible (EDR Recommended)	1.7	Yes
85	USN 01115.000028	3468 Black Street	Town of Scipio	Cayuga	Nineteenth-century farmstead	Previously Identified	S/NRHP Eligibility Undetermined	Resource Not Extant	1.2	Yes



Survey ID	Identification Number	Address	Municipality	County	Resource Name and/or Description	Source	Existing S/NRHP Eligibility Status (NYSHPO)	S/NRHP Eligibility Recommendation	Distance from Facility Site (miles)	Potential Facility Visibility
86	USN 01115.000029	2378 Quarry Road	Town of Scipio	Cayuga	Demolished resource	Previously Identified	S/NRHP Eligibility Undetermined	Resource Not Extant	1.7	Yes
87	N/A	North of 3011 Hunter Road	Town of Scipio	Cayuga	Babcock Cemetery	Previously Identified	S/NRHP Eligibility Undetermined	S/NRHP Eligibility Undetermined (EDR Recommended)	1.2	Yes
88	N/A	3832 Mathers Rd	Town of Scipio	Cayuga	Humphrey Howland Burial Ground	Previously Identified	S/NRHP Eligibility Undetermined	S/NRHP Eligibility Undetermined (EDR Recommended)	0.1	Yes
89	USN 01115.000002	2345 Center Road	Town of Scipio	Cayuga	Merrifield Cobblestone House	Previously Identified	S/NRHP Eligibility Undetermined	S/NRHP-Eligible (EDR Recommended)	1.1	Yes
90	USN 01115.000003	2909 Center Road	Town of Scipio	Cayuga	J. Akin Farmstead	Previously Identified	S/NRHP Eligibility Undetermined	S/NRHP-Eligible (EDR Recommended)	0.6	Yes
91	USN 01115.000005	3434 NY-34	Town of Scipio	Cayuga	Scipio Community Church	Previously Identified	S/NRHP Eligibility Undetermined	S/NRHP-Eligible (EDR Recommended)	0.7	Yes
92	USN 01115.000021	3407 NY-34	Town of Scipio	Cayuga	John E. Beardsley House	Previously Identified	S/NRHP Eligibility Undetermined	S/NRHP-Eligible (EDR Recommended)	0.6	Yes
93	USN 01115.000009	2726 Center Road	Town of Scipio	Cayuga	King Residence	Previously Identified	S/NRHP Eligibility Undetermined	S/NRHP-Eligible (EDR Recommended)	0.6	Yes

Survey ID	Identification Number	Address	Municipality	County	Resource Name and/or Description	Source	Existing S/NRHP Eligibility Status (NYSHPO)	S/NRHP Eligibility Recommendation	Distance from Facility Site (miles)	Potential Facility Visibility
94	N/A	South of 4101 Wyckoff Road	Town of Scipio	Cayuga	Burch Cemetery	Previously Identified	S/NRHP Eligibility Undetermined	N/A	2.2	No
95	N/A	North of 3768 NY-34	Town of Scipio	Cayuga	Cornwall Cemetery	Previously Identified	S/NRHP Eligibility Undetermined	S/NRHP-Eligible (EDR Recommended)	1.7	Yes
96	N/A	South of 3625 NY-34	Town of Scipio	Cayuga	Fordyce Cemetery	Previously Identified	S/NRHP Eligibility Undetermined	S/NRHP-Eligible (EDR Recommended)	1.3	Yes
97	N/A	2885 Center Road	Town of Scipio	Cayuga	St. Bernard Cemetery	Previously Identified	S/NRHP Eligibility Undetermined	S/NRHP-Eligible (EDR Recommended)	0.7	Yes
98	N/A	Rear of 2805 Center Road	Town of Scipio	Cayuga	Old St. Bernard Cemetery	Previously Identified	S/NRHP Eligibility Undetermined	S/NRHP-Eligible (EDR Recommended)	0.6	Yes
99	N/A	3313 NY-34	Town of Scipio	Cayuga	Scipio Rural Cemetery	Previously Identified	S/NRHP Eligibility Undetermined	S/NRHP-Eligible (EDR Recommended)	0.3	Yes
100	N/A	East of 2155 Manchester Road	Town of Scipio	Cayuga	Eddy Cemetery	Previously Identified	S/NRHP Eligibility Undetermined	S/NRHP-Eligible (EDR Recommended)	2.3	Yes
101	N/A	East of 1925 Manchester Road	Town of Scipio	Cayuga	Manchester Cemetery	Previously Identified	S/NRHP Eligibility Undetermined	S/NRHP-Eligible (EDR Recommended)	2.9	Yes

Survey ID	Identification Number	Address	Municipality	County	Resource Name and/or Description	Source	Existing S/NRHP Eligibility Status (NYSHPO)	S/NRHP Eligibility Recommendation	Distance from Facility Site (miles)	Potential Facility Visibility
102	N/A	2662 Sherwood Road, in field	Town of Scipio	Cayuga	Bolts Corners Cemetery	Previously Identified	S/NRHP Eligibility Undetermined	S/NRHP-Eligible (EDR Recommended)	0.4	Yes
103	N/A	North of 2831 Black Street	Town of Scipio	Cayuga	Gould-Akin Cemetery	Previously Identified	S/NRHP Eligibility Undetermined	S/NRHP-Eligible (EDR Recommended)	1.0	Yes
104	USN 01115.000010	3428 NY-34B	Town of Scipio	Cayuga	Scipioville Presbyterian Church	Previously Identified	S/NRHP Eligibility Undetermined	S/NRHP-Eligible (EDR Recommended)	2.9	Yes
105	N/A	4046 Wyckoff Road	Town of Scipio	Cayuga	H. O'Hara Farmstead	Previously Identified	S/NRHP Eligibility Undetermined	S/NRHP-Eligible (EDR Recommended)	2.0	Yes
106	N/A	North of 1421 Indian Field Road	Town of Venice	Cayuga	Tuppers Corner Cemetery	Previously Identified	S/NRHP Eligibility Undetermined	S/NRHP-Eligible (EDR Recommended)	1.9	Yes
107	N/A	1660 NY-34B	Town of Venice	Cayuga	Cobblestone residence	Previously Identified	S/NRHP Eligibility Undetermined	N/A	4.0	No
108	USN 01122.000004	1868 Poplar Ridge Road	Town of Venice	Cayuga	Poplar Ridge Friends Meeting House	Previously Identified	S/NRHP Eligibility Undetermined	S/NRHP-Eligible (EDR Recommended)	3.1	Yes
109	USN 01122.000007	2624 NY-34B	Town of Venice	Cayuga	Ashland Farm	Previously Identified	S/NRHP Eligibility Undetermined	Not S/NRHP Eligible (EDR Recommended)	3.0	Yes
110	USN 01122.000006	2629 NY-34B	Town of Venice	Cayuga	Greek Revival Residence	Previously Identified	S/NRHP Eligibility Undetermined	Not S/NRHP Eligible (EDR Recommended)	3.1	Yes

Survey ID	Identification Number	Address	Municipality	County	Resource Name and/or Description	Source	Existing S/NRHP Eligibility Status (NYSHPO)	S/NRHP Eligibility Recommendation	Distance from Facility Site (miles)	Potential Facility Visibility
111	USN 01122.000003	2457 Stewarts Corners Road	Town of Venice	Cayuga	Stewart's Corners Church	Previously Identified	S/NRHP Eligibility Undetermined	Resource Not Extant	0.1	Yes
112	USN 01122.000008	2513 NY-34B	Town of Venice	Cayuga	Krueger House	Previously Identified	S/NRHP Eligibility Undetermined	S/NRHP-Eligible (EDR Recommended)	3.2	Yes
113	USN 01122.000001	2599 NY-34B	Town of Venice	Cayuga	Octagon House	Previously Identified	S/NRHP Eligibility Undetermined	S/NRHP-Eligible (EDR Recommended)	3.1	Yes
114	USN 01122.000002	Opposite 1520 McAllister Road	Town of Venice	Cayuga	Eight Square Schoolhouse No. 16	Previously Identified	S/NRHP Eligibility Undetermined	S/NRHP-Eligible (EDR Recommended)	2.6	Yes
115	N/A	2442 Stewarts Corners Rd	Town of Venice	Cayuga	Stewart Corners Cemetery	Previously Identified	S/NRHP Eligibility Undetermined	S/NRHP-Eligible (EDR Recommended)	<0.1	Yes
116	N/A	2380 NY-34	Town of Venice	Cayuga	Venice Center Cemetery	Previously Identified	S/NRHP Eligibility Undetermined	S/NRHP-Eligible (EDR Recommended)	0.4	Yes
117	N/A	3469 Myers Road	Town of Venice	Cayuga	East Venice Cemetery	Previously Identified	S/NRHP Eligibility Undetermined	S/NRHP-Eligible (EDR Recommended)	2.3	Yes
118	N/A	Opposite 2152 NY-34B	Town of Venice	Cayuga	Ridgeway Cemetery	Previously Identified	S/NRHP Eligibility Undetermined	S/NRHP-Eligible (EDR Recommended)	3.4	Yes

Survey ID	Identification Number	Address	Municipality	County	Resource Name and/or Description	Source	Existing S/NRHP Eligibility Status (NYSHPO)	S/NRHP Eligibility Recommendation	Distance from Facility Site (miles)	Potential Facility Visibility
119	N/A	Opposite 2599 NY-34B	Town of Venice	Cayuga	Poplar Ridge Cemetery	Previously Identified	S/NRHP Eligibility Undetermined	S/NRHP-Eligible (EDR Recommended)	3.1	Yes
120	N/A	West of 2082 Poplar Ridge Road	Town of Venice	Cayuga	Rathbun and Chase Cemetery	Previously Identified	S/NRHP Eligibility Undetermined	S/NRHP-Eligible (EDR Recommended)	2.5	Yes
121	N/A	2742 Putnam Parkway	Town of Venice	Cayuga	Murdock House	Previously Identified	S/NRHP Eligibility Undetermined	S/NRHP-Eligible (EDR Recommended)	0.6	Yes
122	USN 01146.000227	5 Walnut Street	Village of Moravia	Cayuga	Italianate Residence	Previously Identified	S/NRHP Eligibility Undetermined	N/A	3.8	No
123	USN 01146.000022	105 Main Street	Village of Moravia	Cayuga	Goodrich House, appears demolished.	Previously Identified	S/NRHP Eligibility Undetermined	N/A	3.8	No
124	USN 01146.000140	151 Main Street	Village of Moravia	Cayuga	A two-story Commercial building	Previously Identified	S/NRHP Eligibility Undetermined	N/A	3.8	No
125	USN 01146.000182	14 West Cayuga Street	Village of Moravia	Cayuga	Greek Revival-style house	Previously Identified	S/NRHP Eligibility Undetermined	N/A	3.6	No
126	USN 01146.000101	12 Central Street	Village of Moravia	Cayuga	Former Italianate flour and feed store (appears deolished)	Previously Identified	S/NRHP Eligibility Undetermined	N/A	3.7	No

Survey ID	Identification Number	Address	Municipality	County	Resource Name and/or Description	Source	Existing S/NRHP Eligibility Status (NYSHPO)	S/NRHP Eligibility Recommendation	Distance from Facility Site (miles)	Potential Facility Visibility
127	USN 01146.000052	48 Central Street	Village of Moravia	Cayuga	Andrew White boyhood home	Previously Identified	S/NRHP Eligibility Undetermined	N/A	3.7	No
128	USN 01146.000270	9 West Avenue	Village of Moravia	Cayuga	Italianate Residence	Previously Identified	S/NRHP Eligibility Undetermined	N/A	3.6	No
129	USN 01146.000066	14 Aurora Street	Village of Moravia	Cayuga	Greek Revival-style house	Previously Identified	S/NRHP Eligibility Undetermined	N/A	3.8	No
130	USN 01146.000061	10-12 Aurora Street	Village of Moravia	Cayuga	Greek Revival-style house	Previously Identified	S/NRHP Eligibility Undetermined	N/A	3.7	No
131	USN 01146.000047	33 South Main Street	Village of Moravia	Cayuga	Greek Revival-style house	Previously Identified	S/NRHP Eligibility Undetermined	N/A	3.9	No
132	USN 01146.000233	75 South Main Street	Village of Moravia	Cayuga	Modular Residence	Previously Identified	S/NRHP Eligibility Undetermined	N/A	3.9	No
133	USN 01146.000042	69-71 South Main Street	Village of Moravia	Cayuga	Greek Revival-style house	Previously Identified	S/NRHP Eligibility Undetermined	N/A	3.9	No
134	USN 01146.000229	5 School Street	Village of Moravia	Cayuga	Italianate Residence	Previously Identified	S/NRHP Eligibility Undetermined	N/A	3.9	No
135	USN 01146.000230	8 School Street	Village of Moravia	Cayuga	Craftsman Residence	Previously Identified	S/NRHP Eligibility Undetermined	N/A	3.8	No



Survey ID	Identification Number	Address	Municipality	County	Resource Name and/or Description	Source	Existing S/NRHP Eligibility Status (NYSHPO)	S/NRHP Eligibility Recommendation	Distance from Facility Site (miles)	Potential Facility Visibility
136	USN 01146.000231	14 School Street	Village of Moravia	Cayuga	Greek Revival-style house	Previously Identified	S/NRHP Eligibility Undetermined	N/A	3.8	No
137	USN 01146.000232	18 School Street	Village of Moravia	Cayuga	Greek Revival-style house	Previously Identified	S/NRHP Eligibility Undetermined	N/A	3.8	No
138	USN 01146.000136	68 Grove Street	Village of Moravia	Cayuga	Italianate Railroad Hotel	Previously Identified	S/NRHP Eligibility Undetermined	N/A	3.7	No
139	USN 01146.000044	49 South Main Street	Village of Moravia	Cayuga	Craftsman Residence	Previously Identified	S/NRHP Eligibility Undetermined	N/A	4.0	No
140	USN 01146.000214	56 Aurora Street	Village of Moravia	Cayuga	Italianate Residence	Previously Identified	S/NRHP Eligibility Undetermined	N/A	3.5	No
141	USN 01146.000275	51 Church Street	Village of Moravia	Cayuga	Eastlake-style Residence	Previously Identified	S/NRHP Eligibility Undetermined	N/A	4.1	No
142	USN 01146.000142	124 Main Street	Village of Moravia	Cayuga	Stick-Style Residence	Previously Identified	S/NRHP Eligibility Undetermined	N/A	3.8	No
143	USN 01146.000188	204 North Main Street	Village of Moravia	Cayuga	Italianate Residence	Previously Identified	S/NRHP Eligibility Undetermined	N/A	3.8	No
144	USN 01146.000228	6 Walnut Street	Village of Moravia	Cayuga	Sovocool House	Previously Identified	S/NRHP Eligibility Undetermined	N/A	3.8	No

Survey ID	Identification Number	Address	Municipality	County	Resource Name and/or Description	Source	Existing S/NRHP Eligibility Status (NYSHPO)	S/NRHP Eligibility Recommendation	Distance from Facility Site (miles)	Potential Facility Visibility
145	USN 01146.000056	48 East Cayuga Street	Village of Moravia	Cayuga	Greek Revival Residence	Previously Identified	S/NRHP Eligibility Undetermined	Not S/NRHP Eligible (EDR Recommended)	4.0	Yes
146	USN 01146.000055	60 Oak Hill Road	Village of Moravia	Cayuga	Nancy Maxwell House	Previously Identified	S/NRHP Eligibility Undetermined	Not S/NRHP Eligible (EDR Recommended)	3.8	Yes
147	USN 01146.000291	24 South Main Street	Village of Moravia	Cayuga	Milard Filmore Elementary School	Previously Identified	S/NRHP Eligibility Undetermined	Not S/NRHP Eligible (EDR Recommended)	4.1	Yes
148	USN 01146.000029	176 Main Street	Village of Moravia	Cayuga	John Stoyell Residence	Previously Identified	S/NRHP Eligibility Undetermined	S/NRHP-Eligible (EDR Recommended)	3.8	Yes
149	N/A	Opposite 1668 Walter Corey Road	Town of Venice	Cayuga	Husted Cemetery	Locally Identified	N/A	S/NRHP Eligibility Undetermined (EDR Recommended)	2.5	Yes
150	N/A	Rear of 1951 Indian Field Road	Town of Venice	Cayuga	Old Cemetery	Locally Identified	N/A	S/NRHP Eligibility Undetermined (EDR Recommended)	0.9	Yes
151	N/A	2482 NY-34B	Town of Venice	Cayuga	Mosher Store	Locally Identified	N/A	S/NRHP-Eligible (EDR Recommended)	3.2	Yes
152	N/A	2778 Poplar Ridge Road	Town of Venice	Cayuga	Venice Center Depot	Locally Identified	N/A	S/NRHP-Eligible (EDR Recommended)	0.6	Yes

Survey ID	Identification Number	Address	Municipality	County	Resource Name and/or Description	Source	Existing S/NRHP Eligibility Status (NYSHPO)	S/NRHP Eligibility Recommendation	Distance from Facility Site (miles)	Potential Facility Visibility
153	N/A	1901 Poplar Ridge Road	Town of Venice	Cayuga	Mosher House	Locally Identified	N/A	S/NRHP-Eligible (EDR Recommended)	3.0	Yes
154	N/A	Opposite 2431 Poplar Ridge Road	Town of Venice	Cayuga	Cannon Cemetery	Locally Identified	N/A	S/NRHP-Eligible (EDR Recommended)	1.3	Yes
155	N/A	4620 West Lake Road	Town of Fleming	Cayuga	Wyckoff Station	Newly Identified	N/A	S/NRHP-Eligible (EDR Recommended)	3.9	Yes
156	N/A	4705 NY-34	Town of Fleming	Cayuga	Culver Farmhouse	Newly Identified	N/A	S/NRHP-Eligible (EDR Recommended)	4.7	Yes
157	N/A	991 Academy Street	Town of Genoa	Cayuga	Genoa Village Cemetery	Newly Identified	N/A	S/NRHP Eligibility Undetermined (EDR Recommended)	3.5	Yes
158	N/A	South of 770 East Genoa Road	Town of Genoa	Cayuga	Sharpsteen Cemetery	Newly Identified	N/A	S/NRHP-Eligible (EDR Recommended)	4.7	Yes
159	N/A	10382 NY-90	Town of Genoa	Cayuga	Hewitt Farmstead	Newly Identified	N/A	S/NRHP-Eligible (EDR Recommended)	3.7	Yes
160	N/A	990 Academy Street	Town of Genoa	Cayuga	Genoa Central School	Newly Identified	N/A	S/NRHP-Eligible (EDR Recommended)	3.5	Yes

Survey ID	Identification Number	Address	Municipality	County	Resource Name and/or Description	Source	Existing S/NRHP Eligibility Status (NYSHPO)	S/NRHP Eligibility Recommendation	Distance from Facility Site (miles)	Potential Facility Visibility
161	N/A	928 Mahaney Road	Town of Genoa	Cayuga	Jackson Farmstead	Newly Identified	N/A	S/NRHP-Eligible (EDR Recommended)	4.5	Yes
162	N/A	10539 NY-90	Town of Genoa	Cayuga	Mead Farmstead	Newly Identified	N/A	S/NRHP-Eligible (EDR Recommended)	3.8	Yes
163	N/A	10739 NY-90	Town of Genoa	Cayuga	Lester Farmstead	Newly Identified	N/A	S/NRHP-Eligible (EDR Recommended)	4.0	Yes
164	N/A	East of 1219 Bartnick Road	Town of Genoa	Cayuga	Moe Family Cemetery	Newly Identified	N/A	S/NRHP-Eligible (EDR Recommended)	3.4	Yes
165	N/A	1193 Stewarts Corners Road	Town of Genoa	Cayuga	Sellen Farmstead	Newly Identified	N/A	S/NRHP-Eligible (EDR Recommended)	3.2	Yes
166	N/A	Main, Maple, Academy, and South Streets	Town of Genoa	Cayuga	Hamlet of Genoa Historic District	Newly Identified	N/A	S/NRHP-Eligible (EDR Recommended)	3.4	Yes
167	N/A	1568 Poplar Ridge Road	Town of Ledyard	Cayuga	Giles Farmstead	Newly Identified	N/A	S/NRHP Eligibility Undetermined (EDR Recommended)	4.2	Yes
168	N/A	1189 Levanna Road	Town of Ledyard	Cayuga	Anthony Farmstead	Newly Identified	N/A	S/NRHP-Eligible (EDR Recommended)	4.8	Yes

Survey ID	Identification Number	Address	Municipality	County	Resource Name and/or Description	Source	Existing S/NRHP Eligibility Status (NYSHPO)	S/NRHP Eligibility Recommendation	Distance from Facility Site (miles)	Potential Facility Visibility
169	N/A	3498 Benjamin Road	Town of Ledyard	Cayuga	Batthey Farmstead	Newly Identified	N/A	S/NRHP-Eligible (EDR Recommended)	3.6	Yes
170	N/A	3727 Brick Church Road	Town of Ledyard	Cayuga	Alexander Farmstead	Newly Identified	N/A	S/NRHP-Eligible (EDR Recommended)	4.7	Yes
171	N/A	3225 Brick Church Road	Town of Ledyard	Cayuga	White Farmstead	Newly Identified	N/A	S/NRHP-Eligible (EDR Recommended)	4.3	Yes
172	N/A	1851 NY-34B	Town of Ledyard	Cayuga	Homer Wilson House	Newly Identified	N/A	S/NRHP-Eligible (EDR Recommended)	3.9	Yes
173	N/A	1710 Poplar Ridge Road	Town of Ledyard	Cayuga	Italianate Residence	Newly Identified	N/A	S/NRHP-Eligible (EDR Recommended)	3.7	Yes
174	N/A	4310 West Hill Road	Town of Locke	Cayuga	Howell Farmstead	Newly Identified	N/A	S/NRHP-Eligible (EDR Recommended)	4.4	Yes
175	N/A	2650 Rockefeller Road	Town of Moravia	Cayuga	Dennis Farmstead	Newly Identified	N/A	S/NRHP-Eligible (EDR Recommended)	2.2	Yes
176	N/A	South of 3104 Jugg Street	Town of Moravia	Cayuga	Hall Cemetery	Newly Identified	N/A	S/NRHP-Eligible (EDR Recommended)	4.4	Yes
177	N/A	478 Glenwood Lane	Town of Niles	Cayuga	Queen Anne Cottage	Newly Identified	N/A	S/NRHP-Eligible (EDR Recommended)	3.2	Yes

Survey ID	Identification Number	Address	Municipality	County	Resource Name and/or Description	Source	Existing S/NRHP Eligibility Status (NYSHPO)	S/NRHP Eligibility Recommendation	Distance from Facility Site (miles)	Potential Facility Visibility
178	N/A	463 Fire Lane 23	Town of Niles	Cayuga	Shingle-Style Cottage	Newly Identified	N/A	S/NRHP-Eligible (EDR Recommended)	2.4	Yes
179	N/A	427 Boscobel Lane	Town of Niles	Cayuga	Queen Anne Cottage	Newly Identified	N/A	S/NRHP-Eligible (EDR Recommended)	2.4	Yes
180	N/A	428 Woodside Way	Town of Niles	Cayuga	Queen Anne Cottage	Newly Identified	N/A	S/NRHP-Eligible (EDR Recommended)	2.2	Yes
181	N/A	420 Woodside Way	Town of Niles	Cayuga	Queen Anne Cottage	Newly Identified	N/A	S/NRHP-Eligible (EDR Recommended)	2.2	Yes
182	N/A	4121 Sam Adams Lane	Town of Niles	Cayuga	Girl Scout Camp Yaiewano	Newly Identified	N/A	S/NRHP-Eligible (EDR Recommended)	2.6	Yes
183	N/A	4187 Sam Adams Lane	Town of Niles	Cayuga	Camp Y-Owasco	Newly Identified	N/A	S/NRHP-Eligible (EDR Recommended)	2.7	Yes
184	N/A	4535 Rockefeller Road	Town of Niles	Cayuga	Amerman Farmhouse	Newly Identified	N/A	S/NRHP-Eligible (EDR Recommended)	4.0	Yes
185	N/A	4206 Valentine Road	Town of Niles	Cayuga	Selover Cemetery	Newly Identified	N/A	S/NRHP-Eligible (EDR Recommended)	4.0	Yes
186	N/A	4189 Sam Adams Lane	Town of Niles	Cayuga	Camp Rotary	Newly Identified	N/A	S/NRHP-Eligible (EDR Recommended)	2.8	Yes



Survey ID	Identification Number	Address	Municipality	County	Resource Name and/or Description	Source	Existing S/NRHP Eligibility Status (NYSHPO)	S/NRHP Eligibility Recommendation	Distance from Facility Site (miles)	Potential Facility Visibility
187	N/A	4723 Rockefeller Road	Town of Owasco	Cayuga	Nashold House	Newly Identified	N/A	S/NRHP-Eligible (EDR Recommended)	4.4	Yes
188	N/A	12 Fire Lane 26	Town of Scipio	Cayuga	Doran Cottage	Newly Identified	N/A	S/NRHP-Eligible (EDR Recommended)	2.7	Yes
189	N/A	3329 Wyckoff Road	Town of Scipio	Cayuga	Ames Farmhouse	Newly Identified	N/A	S/NRHP-Eligible (EDR Recommended)	<0.1	Yes
190	N/A	150 Casowasco Drive	Town of Scipio	Cayuga	Casowasco	Newly Identified	N/A	S/NRHP-Eligible (EDR Recommended)	1.4	Yes
191	N/A	4325 NY-34	Town of Scipio	Cayuga	Morgan Farmstead	Newly Identified	N/A	S/NRHP-Eligible (EDR Recommended)	3.4	Yes
192	N/A	4335 NY-34B	Town of Scipio	Cayuga	Pettit Farmstead	Newly Identified	N/A	S/NRHP-Eligible (EDR Recommended)	4.7	Yes
193	N/A	3357 NY-34B	Town of Scipio	Cayuga	Henry Watkins Farmhouse	Newly Identified	N/A	S/NRHP-Eligible (EDR Recommended)	2.9	Yes
194	N/A	3370 NY-34B	Town of Scipio	Cayuga	Amaziah Griswold House	Newly Identified	N/A	S/NRHP-Eligible (EDR Recommended)	2.9	Yes
195	N/A	3393 NY-34B	Town of Scipio	Cayuga	Federal Residence	Newly Identified	N/A	S/NRHP-Eligible (EDR Recommended)	3.0	Yes

Survey ID	Identification Number	Address	Municipality	County	Resource Name and/or Description	Source	Existing S/NRHP Eligibility Status (NYSHPO)	S/NRHP Eligibility Recommendation	Distance from Facility Site (miles)	Potential Facility Visibility
196	N/A	3751 NY-34B	Town of Scipio	Cayuga	Hoxie Farmstead	Newly Identified	N/A	S/NRHP-Eligible (EDR Recommended)	3.4	Yes
197	N/A	2724 Skillett Road	Town of Scipio	Cayuga	John O'Harra Farmstead	Newly Identified	N/A	S/NRHP-Eligible (EDR Recommended)	3.1	Yes
198	N/A	4139 NY-34	Town of Scipio	Cayuga	King Farmstead	Newly Identified	N/A	S/NRHP-Eligible (EDR Recommended)	2.7	Yes
199	N/A	3521 Ensenore Road	Town of Scipio	Cayuga	Culver Stone Barn	Newly Identified	N/A	S/NRHP-Eligible (EDR Recommended)	1.1	Yes
200	N/A	4082 Black Street	Town of Scipio	Cayuga	Dunbar Farmstead	Newly Identified	N/A	S/NRHP-Eligible (EDR Recommended)	2.9	Yes
201	N/A	2532 NY-34	Town of Venice	Cayuga	Venice Center Pavilion	Newly Identified	N/A	S/NRHP-Eligible (EDR Recommended)	0.5	Yes
202	N/A	1917 Poplar Ridge Road	Town of Venice	Cayuga	Former Schoolhouse	Newly Identified	N/A	S/NRHP-Eligible (EDR Recommended)	3.0	Yes
203	N/A	1653 NY-34	Town of Venice	Cayuga	Thompson Farmstead	Newly Identified	N/A	S/NRHP-Eligible (EDR Recommended)	1.3	Yes
204	N/A	2132 Stewarts Corners Road	Town of Venice	Cayuga	Arnold Farmhouse	Newly Identified	N/A	S/NRHP-Eligible (EDR Recommended)	0.1	Yes

Survey ID	Identification Number	Address	Municipality	County	Resource Name and/or Description	Source	Existing S/NRHP Eligibility Status (NYSHPO)	S/NRHP Eligibility Recommendation	Distance from Facility Site (miles)	Potential Facility Visibility
205	N/A	3262 Long Hill Road	Town of Venice	Cayuga	Bennet House	Newly Identified	N/A	S/NRHP-Eligible (EDR Recommended)	0.2	Yes
206	N/A	3259 Long Hill Road	Town of Venice	Cayuga	Rural Factory	Newly Identified	N/A	S/NRHP-Eligible (EDR Recommended)	0.3	Yes
207	N/A	1598 NY-34	Town of Venice	Cayuga	Whitten Farmstead	Newly Identified	N/A	S/NRHP-Eligible (EDR Recommended)	1.5	Yes
208	N/A	1589 Mc Allister Road	Town of Venice	Cayuga	Italianate Residence	Newly Identified	N/A	S/NRHP-Eligible (EDR Recommended)	2.4	Yes
209	N/A	1558 McAllister Road	Town of Venice	Cayuga	Williams Farmhouse	Newly Identified	N/A	S/NRHP-Eligible (EDR Recommended)	2.5	Yes
210	N/A	1600 McAllister Road	Town of Venice	Cayuga	Greek Revival Residence	Newly Identified	N/A	S/NRHP-Eligible (EDR Recommended)	2.4	Yes
211	N/A	5344 Myers Road	Town of Venice	Cayuga	Gilbert Young Farmstead	Newly Identified	N/A	S/NRHP-Eligible (EDR Recommended)	2.4	Yes
212	N/A	1466 Stewarts Corners Road	Town of Venice	Cayuga	Young Farmstead	Newly Identified	N/A	S/NRHP-Eligible (EDR Recommended)	2.4	Yes
213	N/A	Poplar Ridge Road and NY-34B	Town of Venice	Cayuga	Poplar Ridge Historic District	Newly Identified	N/A	S/NRHP-Eligible (EDR Recommended)	3.2	Yes

## **Attachment C**

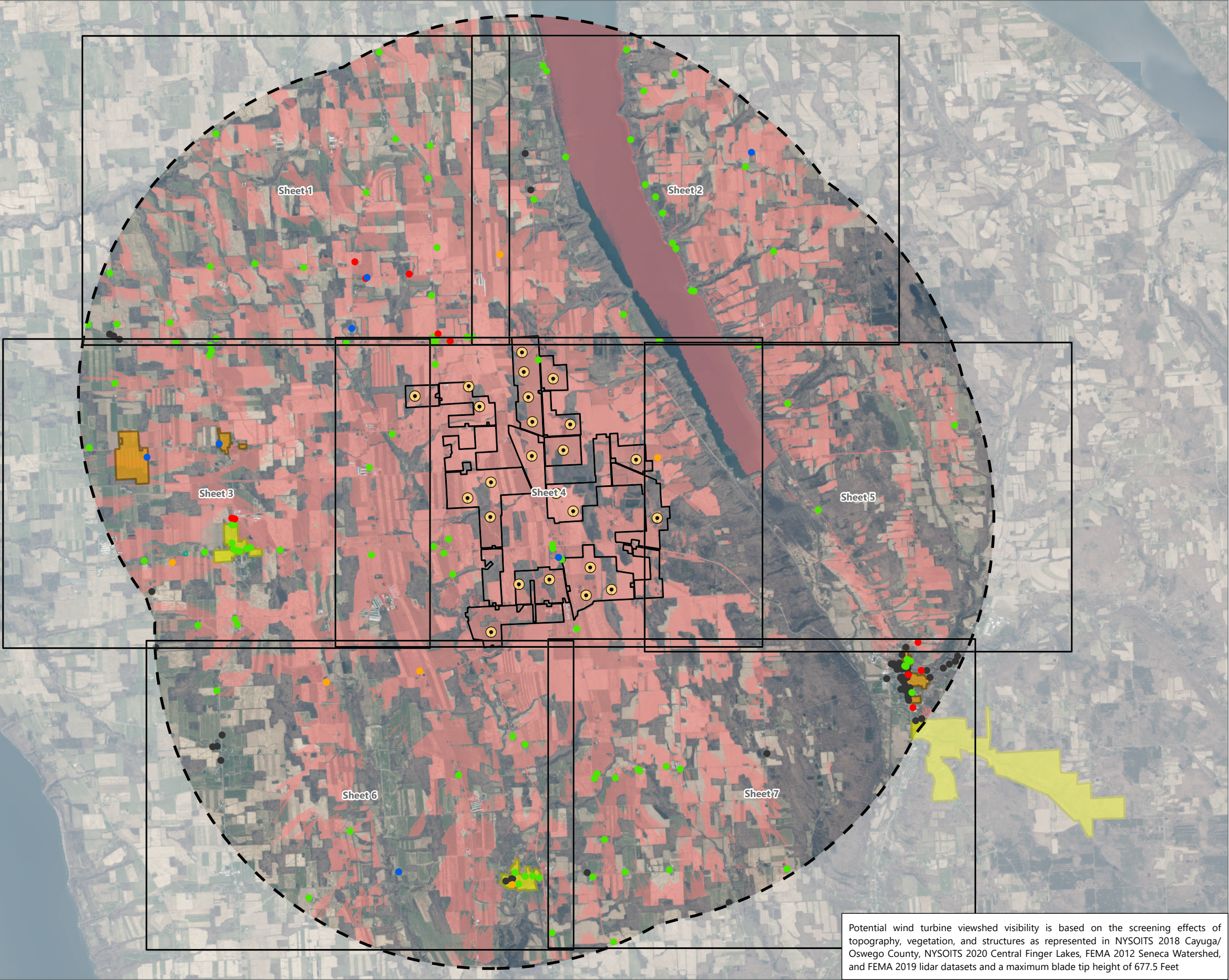
Historic Resources Survey Results Map



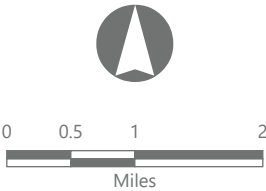
Agricola Wind Project

Towns of Scipio and Venice, Cayuga County, New York

Historic Resources Survey Report



- Wind Turbine
- Historic Resources Survey Results
  - S/NRHP-Eligible (EDR Recommended)
  - S/NRHP Eligibility Undetermined (EDR Recommended)
  - Not S/NRHP-Eligible (EDR Recommended)
  - Resource Not Extant
  - Resource Without Anticipated Visual Impact
- National Historic Landmark
- S/NRHP-Listed
- S/NRHP-Eligible (EDR Recommended)
- APE for Visual Effects
- Facility Site
- Historic Resources Study Area



Prepared August 8, 2024  
Basemap: NYSDOP "2022" & "2023" orthoimagery map service



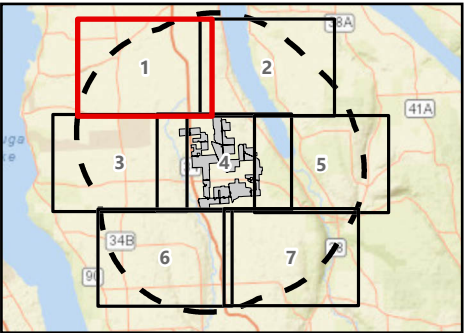
Agricola Wind Project

Towns of Scipio and Venice, Cayuga County, New York

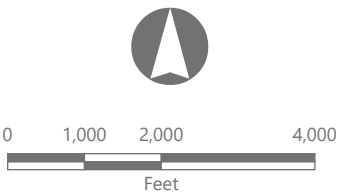
Historic Resources Survey Report

Historic Resources Survey Results

- S/NRHP-Eligible (EDR Recommended)
- S/NRHP Eligibility Undetermined (EDR Recommended)
- Not S/NRHP-Eligible (EDR Recommended)
- Resource Not Extant
- Resource Without Anticipated Visual Impact
- APE for Visual Effects
- Historic Resources Study Area



Sheet 1 of 7



Prepared August 8, 2024  
Basemap: NYSDOP "2022" & "2023" orthoimagery map service

