

## **Attachment D**

Revised Photosimulations and Contrast Rating





*Note: The image above is a panorama photograph taken from E Mile Strip Road in the Town of Smithfield panning clockwise from southeast (left) to west (right). The green rectangle represents the extent of the simulated photograph.*

**VIEWPOINT 3**  
E Mile Strip Road

**VIEWPOINT INFORMATION**

**Location:** E Mile Strip Road  
**Town:** Smithfield  
**County:** Madison  
**Latitude:** 42.99976° N  
**Longitude:** 75.70407° W

**LOCATION INFORMATION**

**Distance Zone Represented in View:** Middle  
Ground  
**Viewer Distance\*:** 3.3 miles  
**Landscape Similarity Zone:** Agricultural/Rural  
Residential  
**Viewer/User Group(s):** Local Residents  
**Visually Sensitive Resource(s):** Erie Canalway  
National Heritage Corridor

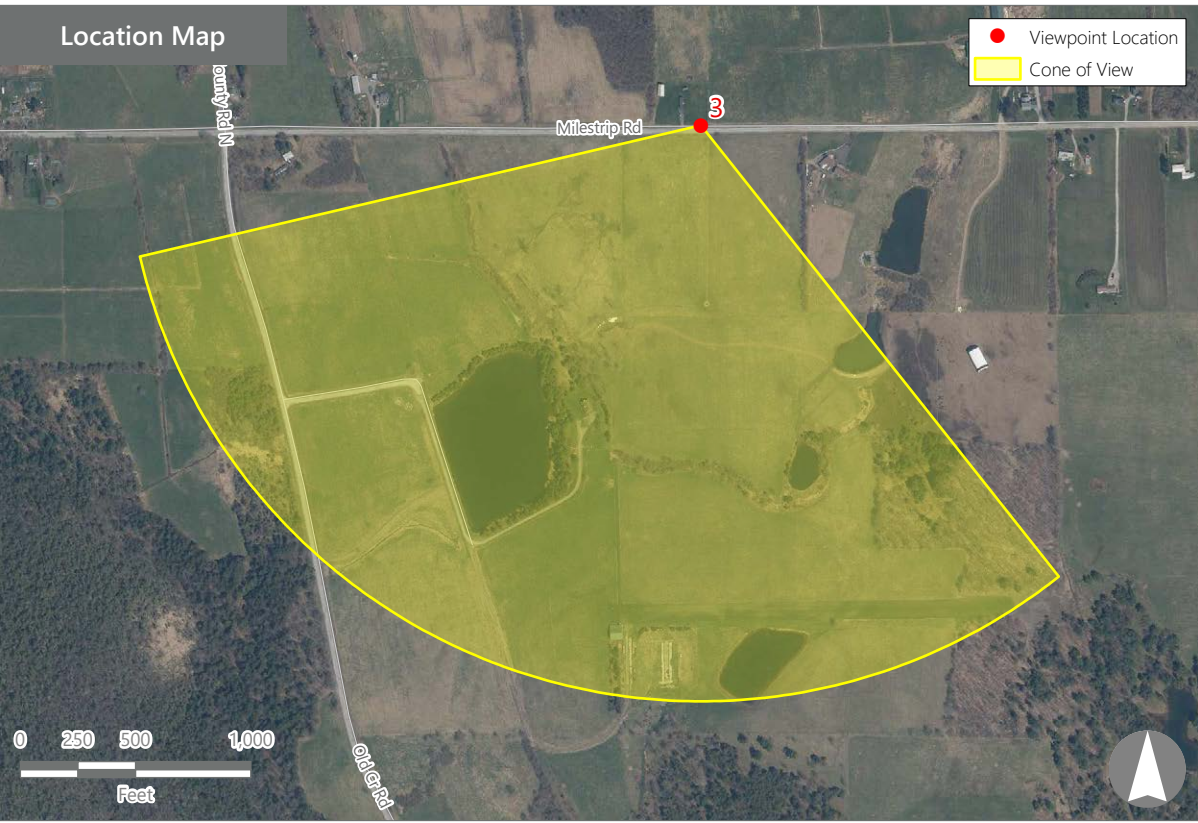
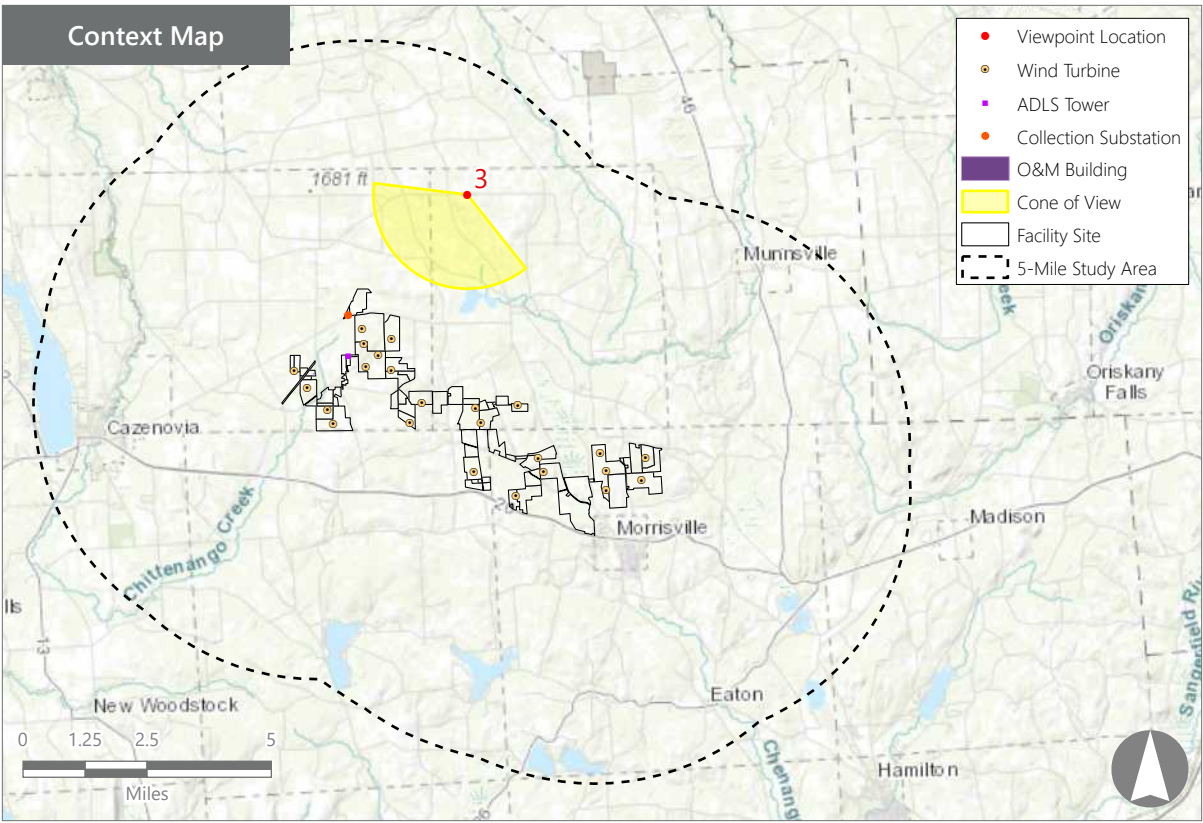
**PHOTOGRAPH INFORMATION**

**Date:** August 31, 2023  
**Time:** 8:17 AM  
**Camera:** Canon EOS 5D Mark IV  
**Resolution:** 24 Megapixels  
**Lens Focal Length (35mm equivalent):** 50 mm  
**Camera Elevation:** 1,505 feet  
**Field of View:** 39 degrees  
**Direction of View:** South-Southwest  
**Printed Size:** 10" x 15"  
**Viewing Distance\*\*:** 21"

**NOTES**

\*Distance as measured from the viewpoint to the closest wind turbine generator within the simulated photograph's field of view

\*\*The simulation is at the correct perspective when printed on an 11 inch by 17 inch sheet at full scale, and viewed approximately 21 inches from the eye of the viewer.



**Hoffman Falls Wind Project**  
Towns of Eaton, Fenner, Nelson, and Smithfield, Madison County, New York

Visual Impact Assessment  
Appendix 8-A



Viewpoint Sensitivity<sup>1</sup>:

Scenic Quality:

- ☐ Low
- ☒ Moderate
- ☒ High

Viewer Exposure

Frequency:

- ☒ Rare
- ☐ Occasional
- ☒ Regular/Repeated

Duration of View:

- ☐ Short/Brief/Fleeting
- ☒ Moderate
- ☒ Long

<sup>1</sup>Viewpoint Sensitivity information is gathered from rating panel results. Scenic Quality is an average based on Low = 1, Moderate = 2, High = 3. Viewer Exposure reflects all those selected be the review panel.

Contrast Rating Scores<sup>2</sup>:

Component	Score	Contrast Rating
	Install	
Landform	1.7	Minimal/Moderate
Vegetation	1.2	Minimal
Land Use	1.5	Minimal/Moderate
Water	1.0	Minimal
Sky	2.2	Moderate
Viewer Activity	1.8	Moderate
AVERAGE	1.7	Minimal/Moderate

<sup>2</sup> Contrast Rating Scale: 0.0 - 0.2 (Insignificant), 0.3 – 0.7 (Insignificant/Minimal), 0.8 – 1.2 (Minimal), 1.3 – 1.7 (Minimal/Moderate), 1.8 - 2.2 (Moderate), 2.3 – 2.7 (Moderate/Appreciable), 2.8 – 3.2 (Appreciable) 3.3 – 3.7 Appreciable/Strong), 3.8 – 4.0 (Strong).

Contrast Rating - Lowest and Highest Scores:

Post - Install		
Component	Score	
	Low	High
Landform	1.0	2.0
Vegetation	0.5	1.5
Land Use	1.0	2.0
Water	NA	NA
Sky	2.0	2.5
Viewer Activity	1.5	2.0

Existing View



Proposed View (Post Installation)



Existing View

Viewpoint 3 is located on East Mile Strip Road in the Town of Smithfield, approximately 3.3 miles from the nearest proposed wind turbine that would be visible in the selected photographs’ field of view. This viewpoint occurs in the Agricultural/Rural Residential LSZ and is typical of more long-distance views available to residents from their homes and local roads. Views in this portion of the VSA include broad expanses of open agricultural land interspersed with woodlots, hedgerows, and scattered farm complexes. Rolling topography and relatively high elevation combine with the open fields to allow long distance views of a bucolic rural landscape. The selected photos present a panorama in which a section of East Mile Strip Road is visible in the immediate foreground along the right edge of the view. An overhead utility line and a broken row of shrubby roadside vegetation parallels the western edge of road, with a single pole acting as a foreground focal point on the right side of the view. On the opposite side of the road, a gently rolling open pasture, punctuated with young trees, descends from the foreground into the middle ground. The pasture is bisected by a hedgerow that extends across the full field of view. Beyond the southern hedgerow, portions of a pond can be seen through breaks in the hedgerow. Although well screened, the pond represents a focal point in the middle ground of this view. Beyond the rolling fields in the middle ground, the land descends into a wooded valley before rising to a background ridgeline. The gently sloping background ridge is a patchwork of fields and forest with widely scattered agricultural buildings. Several existing wind turbines are background focal points along the top of the ridgeline on the right side of the view. The rating panel indicated that the existing view has relatively high scenic quality.

Proposed View

With the proposed Project in place, the entire background ridgeline is dotted with turbines. The new turbines are consistent with the existing turbines and appear to be an extension of the existing wind project. Because they are confined to the background ridgeline, the Facility has not significantly altered the character or composition of the existing landscape. The new turbines are obvious new visual features, but their white color minimizes color contrast with the sky at the horizon. Small areas of forest have been removed and portions of access roads are now visible as a result of the Project. However, since these changes are minor and confined to the background of the view, they do not stand out. While they extend across the entire field of view, their distance and relative uniformity of spacing minimize the sense of visual clutter. Combined with the existing turbines, the Facility draws greater viewer attention and becomes the dominant focal point in this view. However, the lack of turbines in the foreground and middle ground, and the remaining open fields, forests, and farms on the background hillside, maintain the view’s open bucolic character and scenic quality. The rating panel indicated that the proposed Facility presents minimal to moderate contrast with the existing landscape.

Hoffman Falls Wind Project

Towns of Eaton, Fenner, Nelson, and Smithfield, Madison County, New York



EXISTING VIEW



*Note: Printed at actual size, the existing view image is 15 inches wide by 10 inches high. At this size and focal length, the existing view image should be viewed from a distance 21 inches from the eye of the viewer.*



VIEWPOINT 3  
E Mile Strip Road

**Hoffman Falls Wind Project**  
Towns of Eaton, Fenner, Nelson, and Smithfield, Madison County, New York





PHOTOSIMULATION



*Note: Printed at actual size, the resulting simulation image is 15 inches wide by 10 inches high. At this size and focal length, the simulation should be viewed from a distance 21 inches from the eye of the viewer.*



VIEWPOINT 3  
E Mile Strip Road

**Hoffman Falls Wind Project**  
Towns of Eaton, Fenner, Nelson, and Smithfield, Madison County, New York





EXISTING VIEW



*Note: Printed at actual size, the existing view image is 15 inches wide by 10 inches high. At this size and focal length, the existing view image should be viewed from a distance 21 inches from the eye of the viewer.*



VIEWPOINT 3  
E Mile Strip Road

**Hoffman Falls Wind Project**  
Towns of Eaton, Fenner, Nelson, and Smithfield, Madison County, New York





PHOTOSIMULATION



*Note: Printed at actual size, the resulting simulation image is 15 inches wide by 10 inches high. At this size and focal length, the simulation should be viewed from a distance 21 inches from the eye of the viewer.*



VIEWPOINT 3  
E Mile Strip Road

**Hoffman Falls Wind Project**  
Towns of Eaton, Fenner, Nelson, and Smithfield, Madison County, New York

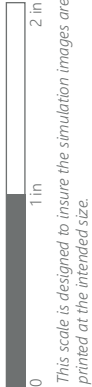




EXISTING VIEW



*Note: Printed at actual size, the existing view image is 15 inches wide by 10 inches high. At this size and focal length, the existing view image should be viewed from a distance 21 inches from the eye of the viewer.*



VIEWPOINT 3  
E Mile Strip Road

**Hoffman Falls Wind Project**  
Towns of Eaton, Fenner, Nelson, and Smithfield, Madison County, New York





PHOTOSIMULATION



*Note: Printed at actual size, the resulting simulation image is 15 inches wide by 10 inches high. At this size and focal length, the simulation should be viewed from a distance 21 inches from the eye of the viewer.*

0 1in 2 in  
This scale is designed to insure the simulation images are printed at the intended size.

VIEWPOINT 3  
E Mile Strip Road

**Hoffman Falls Wind Project**  
Towns of Eaton, Fenner, Nelson, and Smithfield, Madison County, New York





EXISTING VIEW



0 1in 2 in  
This scale is designed to insure the simulation images are printed at the intended size.

VIEWPOINT 3  
E Mile Strip Road

**Hoffman Falls Wind Project**  
Towns of Eaton, Fenner, Nelson, and Smithfield, Madison County, New York



*Note: Printed at actual size, the existing view image is 15 inches wide by 10 inches high. At this size and focal length, the existing view image should be viewed from a distance 21 inches from the eye of the viewer.*



PHOTOSIMULATION



0 1in 2 in  
This scale is designed to insure the simulation images are printed at the intended size.

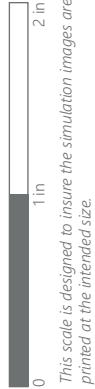
VIEWPOINT 3  
E Mile Strip Road

**Hoffman Falls Wind Project**  
Towns of Eaton, Fenner, Nelson, and Smithfield, Madison County, New York



*Note: Printed at actual size, the resulting simulation image is 15 inches wide by 10 inches high. At this size and focal length, the simulation should be viewed from a distance 21 inches from the eye of the viewer.*



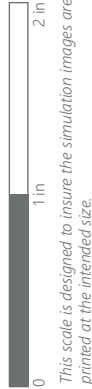


VIEWPOINT 3  
E Mile Strip Road





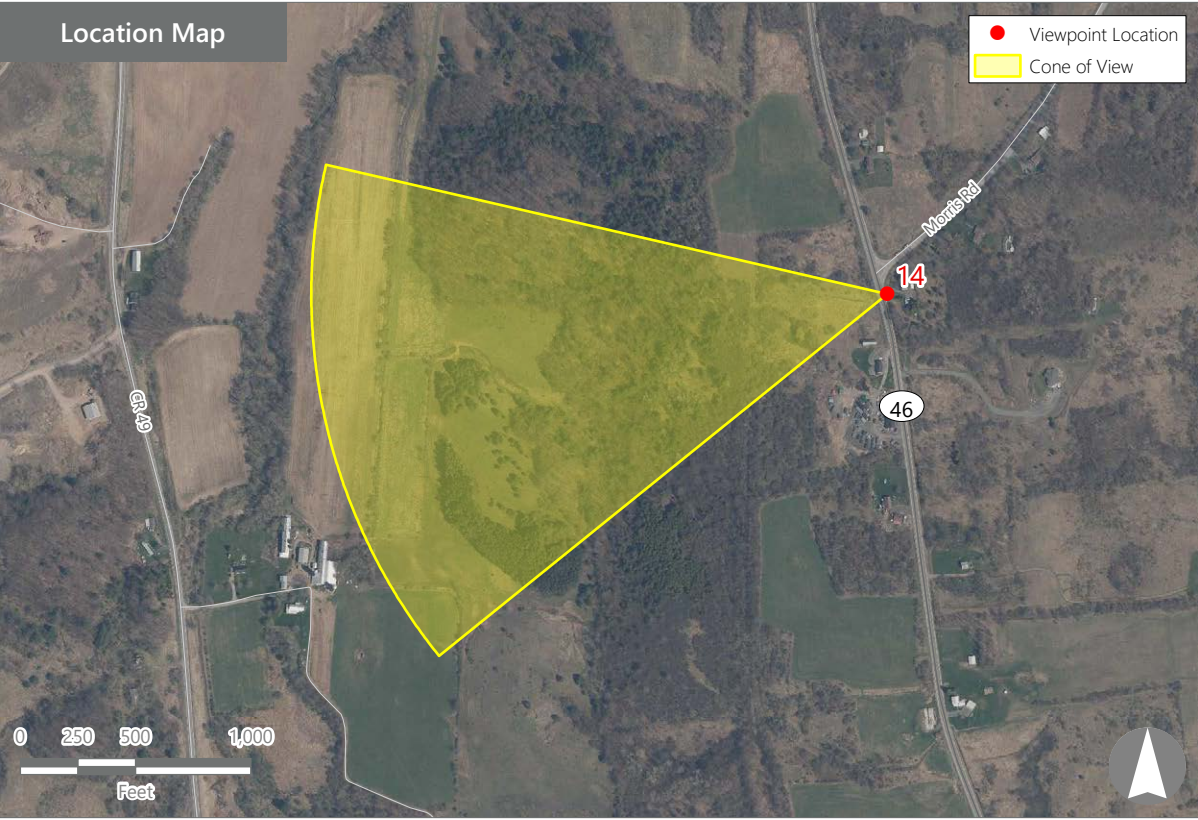
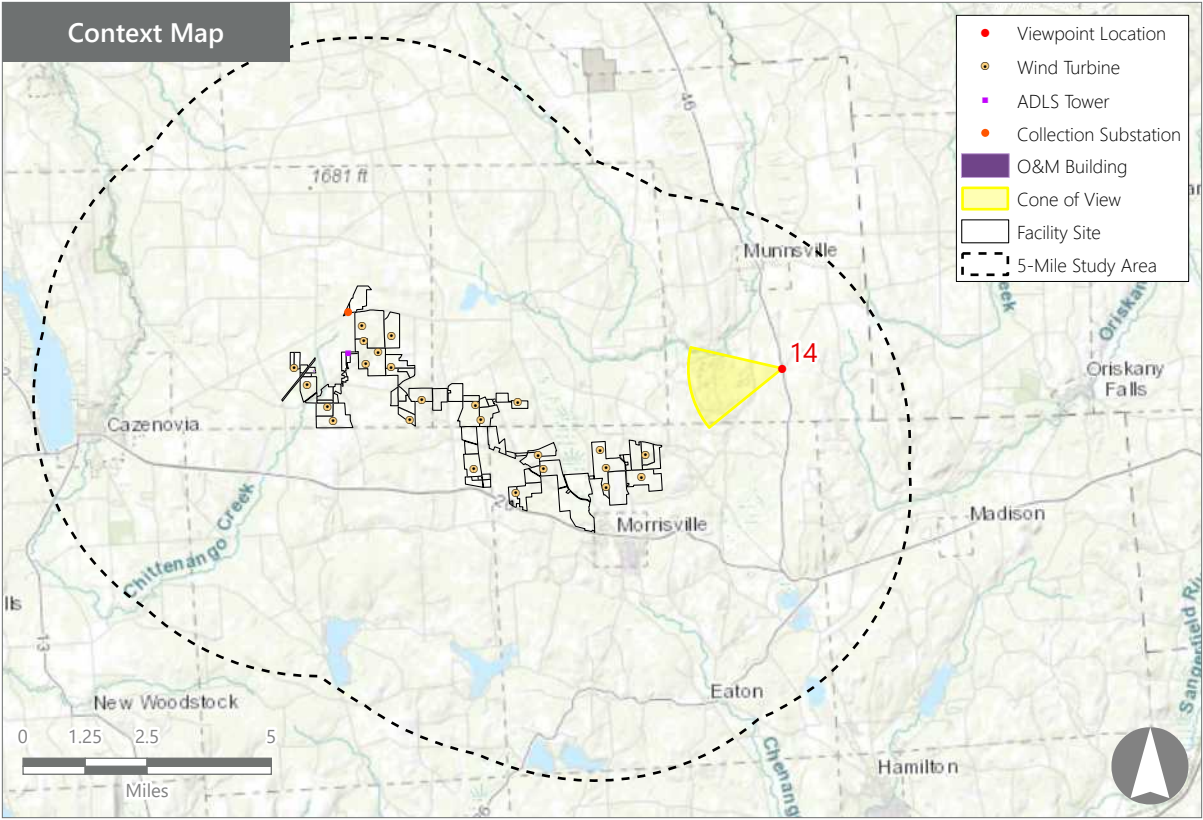
VIEWPOINT 3  
E Mile Strip Road







*Note: The image above is a panorama photograph taken from NYS Route 46 in the Town of Stockbridge panning clockwise from southwest (left) to northwest (right). The green rectangle represents the extent of the simulated photograph.*



## Hoffman Falls Wind Project

Towns of Eaton, Fenner, Nelson, and Smithfield, Madison County, New York

Visual Impact Assessment  
Appendix 8-A

### VIEWPOINT 14

NYS Route 46

#### VIEWPOINT INFORMATION

**Location:** NYS Route 46

**Town:** Stockbridge

**County:** Madison

**Latitude:** 42.94724° N

**Longitude:** 75.57975° W

#### LOCATION INFORMATION

**Distance Zone Represented in View:** Middle  
Ground

**Viewer Distance\*:** 3.3 miles

**Landscape Similarity Zone:** Agricultural/Rural  
Residential

**Viewer/User Group(s):** Local Residents, Through-  
Travelers

**Visually Sensitive Resource(s):** NYS Route 46,  
Erie Canalway National Heritage Corridor

#### PHOTOGRAPH INFORMATION

**Date:** August 31, 2023

**Time:** 9:43 AM

**Camera:** Canon EOS 5D Mark IV

**Resolution:** 24 Megapixels

**Lens Focal Length (35mm equivalent):** 50 mm

**Camera Elevation:** 1,082 feet

**Field of View:** 39 degrees

**Direction of View:** West-Southwest

**Printed Size:** 10" x 15"

**Viewing Distance\*\*:** 21"

#### NOTES

\*Distance as measured from the viewpoint to the closest wind turbine generator within the simulated photograph's field of view

\*\*The simulation is at the correct perspective when printed on an 11 inch by 17 inch sheet at full scale, and viewed approximately 21 inches from the eye of the viewer.



Viewpoint Sensitivity<sup>1</sup>:

Scenic Quality:

- ☒ Low
- ☒ Moderate
- ☒ High

Viewer Exposure

Frequency:

- ☐ Rare
- ☐ Occasional
- ☒ Regular/Repeated

Duration of View:

- ☐ Short/Brief/Fleeting
- ☒ Moderate
- ☒ Long

<sup>1</sup>Viewpoint Sensitivity information is gathered from rating panel results. Scenic Quality is an average based on Low = 1, Moderate = 2, High = 3. Viewer Exposure reflects all those selected by the review panel.

Contrast Rating Scores<sup>2</sup>:

Component	Score	Contrast Rating
	Install	
Landform	0.8	Minimal
Vegetation	0.8	Minimal
Land Use	1.3	Minimal/Moderate
Water	N/A	N/A
Sky	1.5	Minimal/Moderate
Viewer Activity	1.3	Minimal/Moderate
AVERAGE	1.2	Minimal

<sup>2</sup> Contrast Rating Scale: 0.0 - 0.2 (Insignificant), 0.3 – 0.7 (Insignificant/Minimal), 0.8 – 1.2 (Minimal), 1.3 – 1.7 (Minimal/Moderate), 1.8 - 2.2 (Moderate), 2.3 – 2.7 (Moderate/Appreciable), 2.8 – 3.2 (Appreciable) 3.3 – 3.7 Appreciable/Strong), 3.8 – 4.0 (Strong).

Contrast Rating - Lowest and Highest Scores:

Post - Install		
Component	Score	
	Low	High
Landform	0.5	1.0
Vegetation	0.5	4.0
Land Use	1.0	2.0
Water	NA	NA
Sky	1.0	2.0
Viewer Activity	1.0	2.0

Existing View



Proposed View (Post Installation)



Existing View

Viewpoint 14 is located on State Route 46 in the Town of Stockbridge, approximately 3.3 miles from the nearest proposed wind turbine that would be visible in the selected photo's field of view. This relatively high elevation viewpoint occurs in the Agricultural/Rural Residential LSZ but overlooks an area characterized by more abundant woody vegetation. Typical viewers at this location would be through travelers and local residents. In the selected view to the west-southwest, a guardrail at the edge of the highway is a prominent horizontal feature in the immediate foreground. Beyond the guardrail, the land descends into a shallow wooded valley. Forest vegetation is the dominant land cover and extends from the foreground to the distant background. The land rises from the middle ground to a ridgeline where the forest is broken by occasional open fields. Above the ridgeline, the sky is clear blue and uninterrupted by foreground trees or structures. The horizon line, guardrail, and road edge present strong horizontal lines in the landscape, and beyond the road edge, developed features are generally lacking. Elevated viewer perspective and the lack of large trees or structures in the foreground allow for uninterrupted long-distance views from this location. The scenic quality of this view was characterized as variable by the rating panel and indicated to range from low to high.

Proposed View

With the proposed Project in place, multiple wind turbines can be seen extending into the sky at and beyond the ridgeline that defines the horizon. The height/scale contrast of the turbines relative to trees on the ridgeline is notable. But their color contrast with the sky is limited due to lighting conditions, their white color, and distance from the viewer. Because they are closer and essentially unscreened by the ridgeline, turbines in the left half of the view are more prominent than those on the right. Limited color contrast and the effects of distance also reduce the contrast of the turbines' vertical lines with the horizontal features of the landscape. Although the wind turbines represent new focal points that draw viewer attention, the average contrast rating received was minimal indicating they do not significantly change the character or scenic quality of the existing view.

Hoffman Falls Wind Project

Towns of Eaton, Fenner, Nelson, and Smithfield, Madison County, New York



EXISTING VIEW



*Note: Printed at actual size, the resulting simulation image is 15 inches wide by 10 inches high. At this size and focal length, the simulation should be viewed from a distance 21 inches from the eye of the viewer.*



VIEWPOINT 14  
NYS Route 46

**Hoffman Falls Wind Project**  
Towns of Eaton, Fenner, Nelson, and Smithfield, Madison County, New York





PHOTOSIMULATION



*Note: Printed at actual size, the existing view image is 15 inches wide by 10 inches high. At this size and focal length, the existing view image should be viewed from a distance 21 inches from the eye of the viewer.*



This scale is designed to insure the simulation images are printed at the intended size.

VIEWPOINT 14  
NYS Route 46

**Hoffman Falls Wind Project**  
Towns of Eaton, Fenner, Nelson, and Smithfield, Madison County, New York





EXISTING VIEW



*Note: Printed at actual size, the resulting simulation image is 15 inches wide by 10 inches high. At this size and focal length, the simulation should be viewed from a distance 21 inches from the eye of the viewer.*



VIEWPOINT 14  
NYS Route 46

**Hoffman Falls Wind Project**  
Towns of Eaton, Fenner, Nelson, and Smithfield, Madison County, New York





PHOTOSIMULATION



*Note: Printed at actual size, the resulting simulation image is 15 inches wide by 10 inches high. At this size and focal length, the simulation should be viewed from a distance 21 inches from the eye of the viewer.*

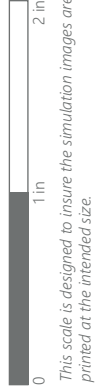


VIEWPOINT 14  
NYS Route 46

**Hoffman Falls Wind Project**  
Towns of Eaton, Fenner, Nelson, and Smithfield, Madison County, New York

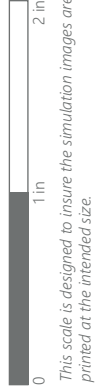






VIEWPOINT 14  
NYS Route 46



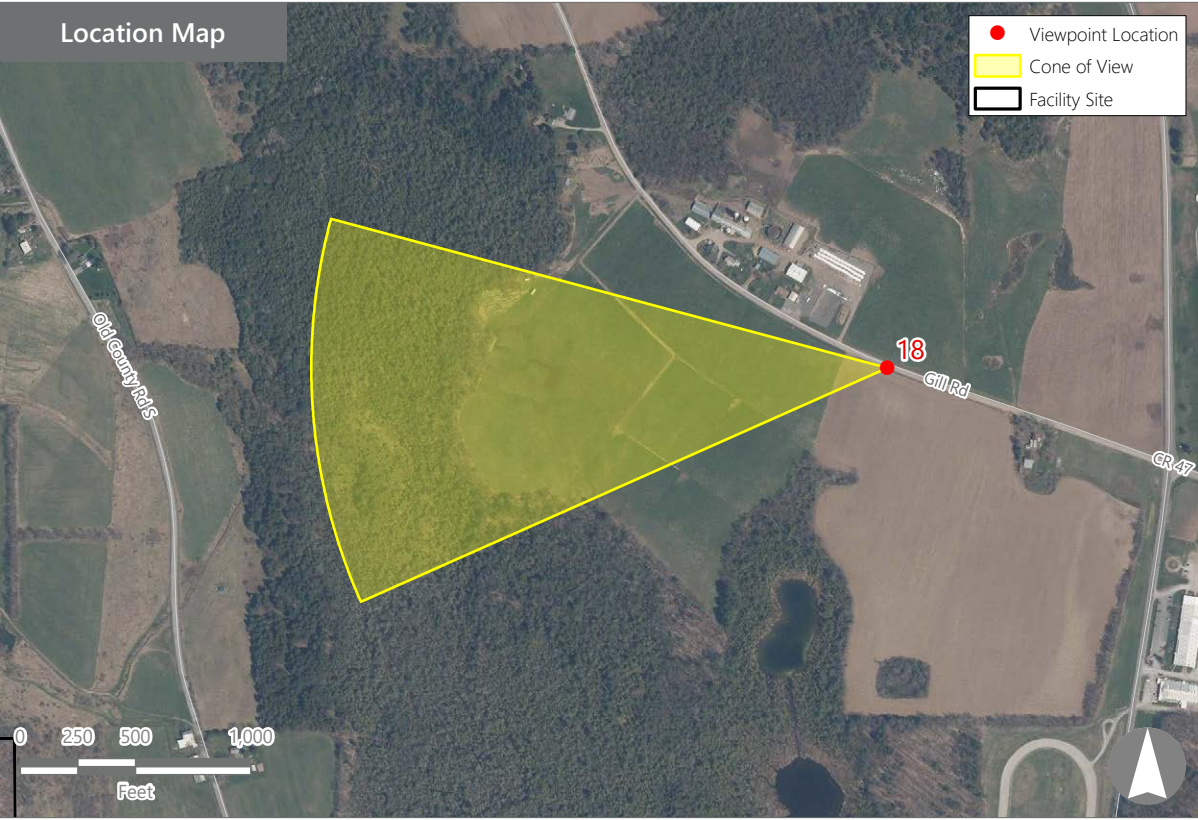
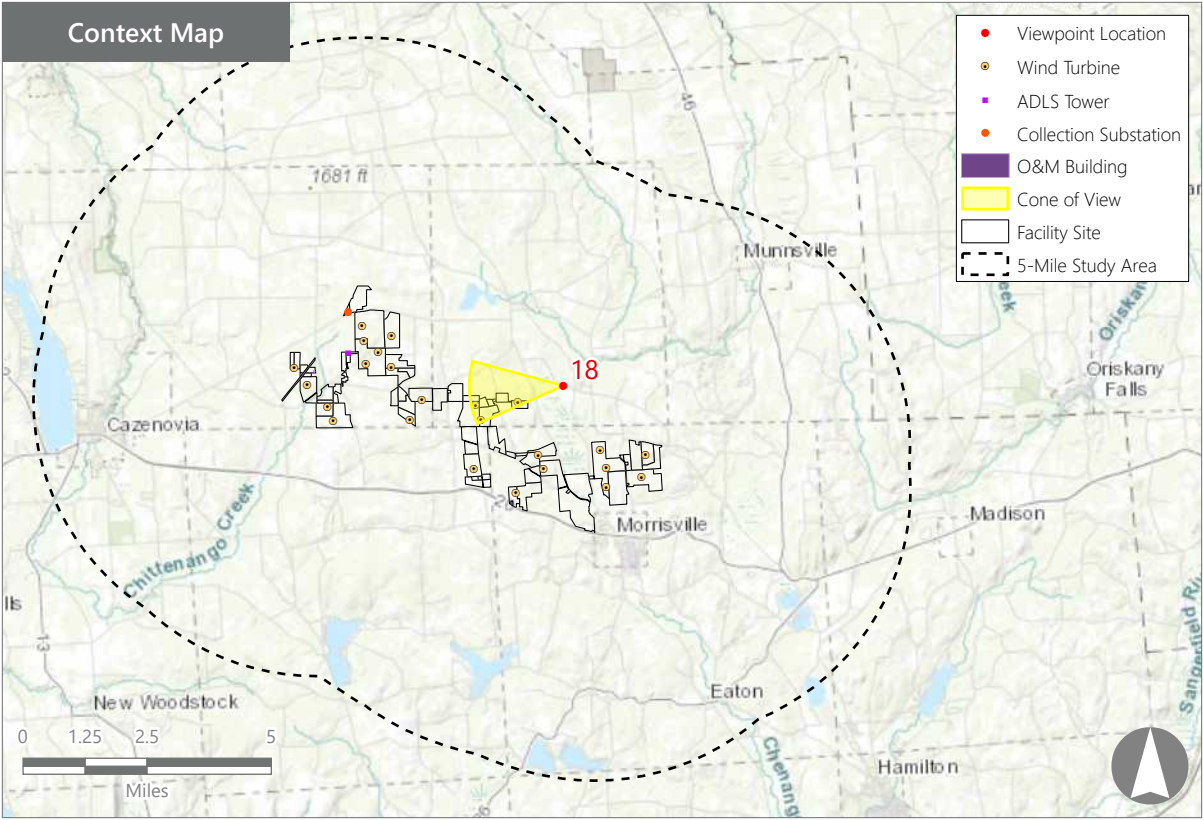


VIEWPOINT 14  
NYS Route 46





*Note: The image above is a panorama photograph taken from Gill Road in the Town of Smithfield panning clockwise from south (left) to northwest (right). The green rectangle represents the extent of the simulated photograph.*



**VIEWPOINT 18**  
Gill Road

**VIEWPOINT INFORMATION**

**Location:** Gill Road  
**Town:** Smithfield  
**County:** Madison  
**Latitude:** 42.94291° N  
**Longitude:** 75.66677° W

**LOCATION INFORMATION**

**Distance Zone Represented in View:** Middle ground  
**Viewer Distance\*:** 1.0 mile  
**Landscape Similarity Zone:** Agricultural/Rural Residential  
**Viewer/User Group(s):** Local Residents  
**Visually Sensitive Resource(s):** Erie Canalway National Heritage Corridor

**PHOTOGRAPH INFORMATION**

**Date:** August 31, 2023  
**Time:** 10:43 AM  
**Camera:** Canon EOS 5D Mark IV  
**Resolution:** 24 Megapixels  
**Lens Focal Length (35mm equivalent):** 50 mm  
**Camera Elevation:** 1,306 feet  
**Field of View:** 39 degrees  
**Direction of View:** West  
**Printed Size:** 10" x 15"  
**Viewing Distance\*\*:** 21"

**NOTES**

\*Distance as measured from the viewpoint to the closest wind turbine generator within the simulated photograph's field of view

\*\*The simulation is at the correct perspective when printed on an 11 inch by 17 inch sheet at full scale, and viewed approximately 21 inches from the eye of the viewer.

**Hoffman Falls Wind Project**  
Towns of Eaton, Fenner, Nelson, and Smithfield, Madison County, New York

Visual Impact Assessment  
Appendix 8-A



Viewpoint Sensitivity<sup>1</sup>:

Scenic Quality:

- ☐ Low
- ☒ Moderate
- ☒ High

Viewer Exposure

Frequency:

- ☒ Rare
- ☐ Occasional
- ☒ Regular/Repeated

Duration of View:

- ☒ Short/Brief/Fleeting
- ☒ Moderate
- ☒ Long

<sup>1</sup>Viewpoint Sensitivity information is gathered from rating panel results. Scenic Quality is an average based on Low = 1, Moderate = 2, High = 3. Viewer Exposure reflects all those selected by the review panel.

Contrast Rating Scores<sup>2</sup>:

Component	Score	Contrast Rating
	Install	
Landform	2.5	Moderate/Appreciable
Vegetation	2.3	Moderate/Appreciable
Land Use	2.0	Moderate
Water	N/A	N/A
Sky	2.8	Appreciable
Viewer Activity	2.2	Moderate
AVERAGE	2.4	Moderate/Appreciable

<sup>2</sup> Contrast Rating Scale: 0.0 - 0.2 (Insignificant), 0.3 - 0.7 (Insignificant/Minimal), 0.8 - 1.2 (Minimal), 1.3 - 1.7 (Minimal/Moderate), 1.8 - 2.2 (Moderate), 2.3 - 2.7 (Moderate/Appreciable), 2.8 - 3.2 (Appreciable) 3.3 - 3.7 Appreciable/Strong), 3.8 - 4.0 (Strong).

Contrast Rating - Lowest and Highest Scores:

Post - Install		
Component	Score	
	Low	High
Landform	1.5	3.0
Vegetation	1.0	3.0
Land Use	1.5	3.0
Water	NA	NA
Sky	2.0	3.5
Viewer Activity	1.5	2.5

Existing View



Proposed View (Post Installation)



Existing View

Viewpoint 18 is located on Gill Road in the Town of Smithfield, approximately 1.0 mile from the nearest proposed wind turbine that would be visible in the selected photo's field of view. This viewpoint occurs in a portion of the Agricultural/Rural Residential LSZ with relatively level topography and a mix of farms, fields, and woodlots. Typical viewers in this location are local residents. In the selected photo, the existing view to the west features a roadside cornfield that extends from the foreground into the middle ground. The field is backed by a horizontal band of trees that represent the edge of a woodlot. The woodlot descends into a valley, and partially screens a mix of fields and forest on undulating hills that extend to the horizon line in the background. Above the rolling horizon line, the uninterrupted sky is clear and light blue in color. The abundance of trees and rolling hills screen any built features, and the view has a strong rural agricultural character and high scenic quality.

Proposed View

With the proposed Project in place, several wind turbines are now visible along the horizon line. The turbines extend well into the sky and their scale contrast with the existing vegetation and landform is notable. Because they are closer to the viewer, the turbines on the left appear larger and their details are more clearly visible. However, their white color and the late morning sun angle minimizes color contrast with the light blue sky. The turbines are prominent new built features in a predominantly undeveloped landscape. Although they present moderate to appreciable line, form, and scale contrast, the distance of the turbines from the viewer limits the effect of the Project on the scenic quality of this working agricultural landscape.

Hoffman Falls Wind Project

Towns of Eaton, Fenner, Nelson, and Smithfield, Madison County, New York



EXISTING VIEW



*Note: Printed at actual size, the existing view image is 15 inches wide by 10 inches high. At this size and focal length, the existing view image should be viewed from a distance 21 inches from the eye of the viewer.*



VIEWPOINT 18  
Gill Road

**Hoffman Falls Wind Project**  
Towns of Eaton, Fenner, Nelson, and Smithfield, Madison County, New York





PHOTOSIMULATION



*Note: Printed at actual size, the resulting simulation image is 15 inches wide by 10 inches high. At this size and focal length, the simulation should be viewed from a distance 21 inches from the eye of the viewer.*

0

1 in

2 in

*This scale is designed to insure the simulation images are printed at the intended size.*

VIEWPOINT 18  
Gill Road

**Hoffman Falls Wind Project**  
Towns of Eaton, Fenner, Nelson, and Smithfield, Madison County, New York







Note: The image above is a panorama photograph taken from Stone Bridge Road in the Town of Nelson panning clockwise from north (left) to southeast (right). The green rectangle represents the extent of the simulated photograph.

VIEWPOINT 23  
Stone Bridge Road

VIEWPOINT INFORMATION

**Location:** Stone Bridge Road  
**Town:** Nelson  
**County:** Madison  
**Latitude:** 42.92730° N  
**Longitude:** 75.71330° W

LOCATION INFORMATION

**Distance Zone Represented in View:** Middle  
Ground  
**Viewer Distance\*:** 0.8 mile  
**Landscape Similarity Zone:** Agricultural/Rural  
Residential  
**Viewer/User Group(s):** Local Residents  
**Visually Sensitive Resource(s):** None Identified

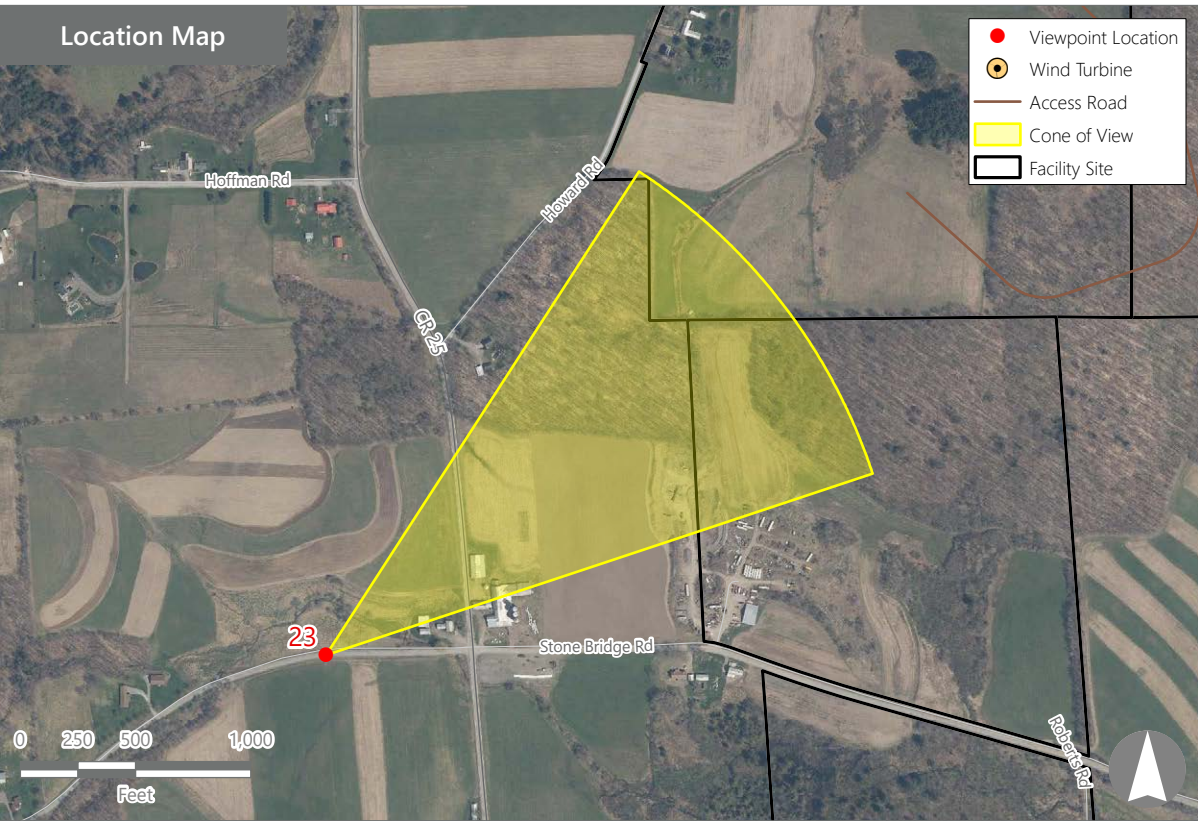
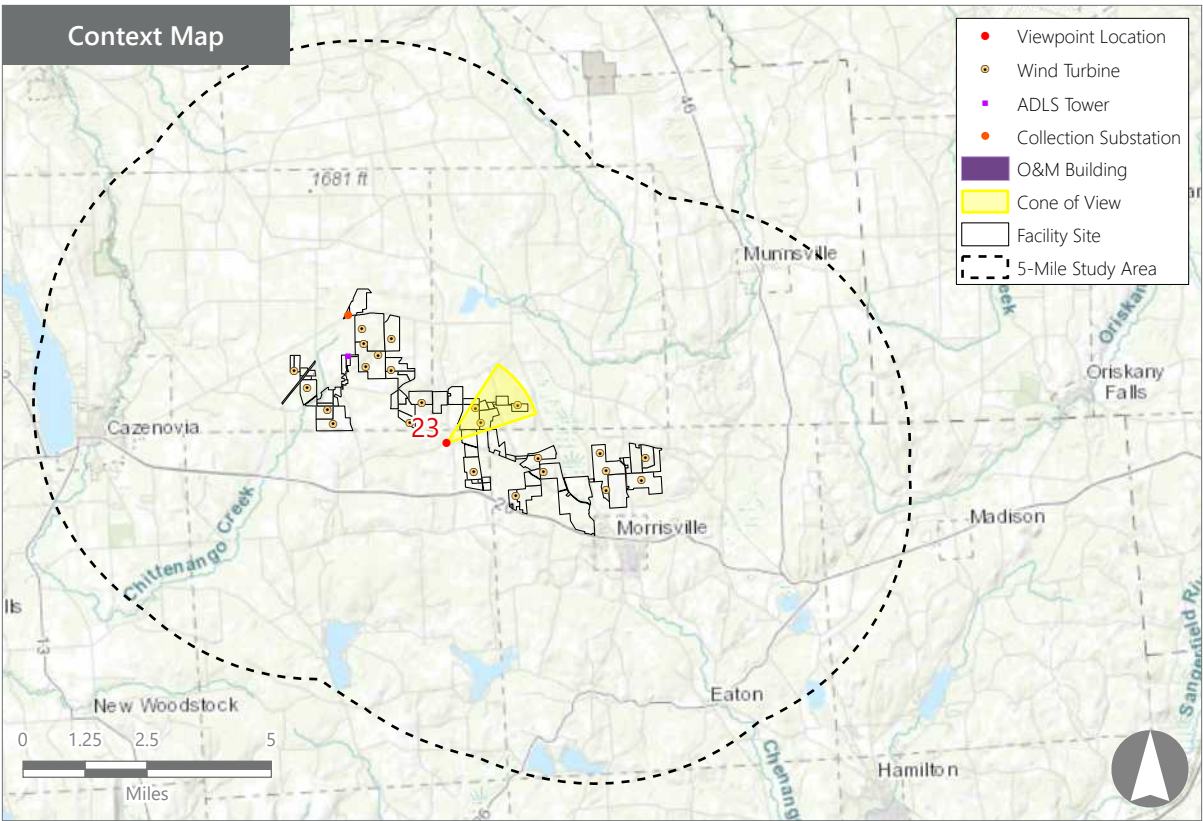
PHOTOGRAPH INFORMATION

**Date:** August 31, 2023  
**Time:** 11:25 AM  
**Camera:** Canon EOS 5D Mark IV  
**Resolution:** 24 Megapixels  
**Lens Focal Length (35mm equivalent):** 50 mm  
**Camera Elevation:** 1,505 feet  
**Field of View:** 39 degrees  
**Direction of View:** Northeast  
**Printed Size:** 10" x 15"  
**Viewing Distance\*\*:** 21"

NOTES

\*Distance as measured from the viewpoint to the closest wind turbine generator within the simulated photograph's field of view

\*\*The simulation is at the correct perspective when printed on an 11 inch by 17 inch sheet at full scale, and viewed approximately 21 inches from the eye of the viewer.



Hoffman Falls Wind Project  
Towns of Eaton, Fenner, Nelson, and Smithfield, Madison County, New York

Visual Impact Assessment  
Appendix 8-A



Viewpoint Sensitivity<sup>1</sup>:

Scenic Quality:

- ☐ Low
- ☒ Moderate
- ☒ High

Viewer Exposure

Frequency:

- ☒ Rare
- ☐ Occasional
- ☒ Regular/Repeated

Duration of View:

- ☐ Short/Brief/Fleeting
- ☒ Moderate
- ☒ Long

<sup>1</sup>Viewpoint Sensitivity information is gathered from rating panel results. Scenic Quality is an average based on Low = 1, Moderate = 2, High = 3. Viewer Exposure reflects all those selected by the review panel.

Contrast Rating Scores<sup>2</sup>:

Component	Score	Contrast Rating
	Install	
Landform	2.2	Moderate
Vegetation	2.3	Moderate/Appreciable
Land Use	2.5	Moderate/Appreciable
Water	N/A	N/A
Sky	3.0	Appreciable
Viewer Activity	2.7	Moderate/Appreciable
AVERAGE	2.5	Moderate/Appreciable

<sup>2</sup> Contrast Rating Scale: 0.0 - 0.2 (Insignificant), 0.3 - 0.7 (Insignificant/Minimal), 0.8 - 1.2 (Minimal), 1.3 - 1.7 (Minimal/Moderate), 1.8 - 2.2 (Moderate), 2.3 - 2.7 (Moderate/Appreciable), 2.8 - 3.2 (Appreciable) 3.3 - 3.7 (Appreciable/Strong), 3.8 - 4.0 (Strong).

Contrast Rating - Lowest and Highest Scores:

Post - Install		
Component	Score	
	Low	High
Landform	0.5	3.0
Vegetation	1.5	3.0
Land Use	2.0	3.0
Water	NA	NA
Sky	3.0	3.0
Viewer Activity	2.5	3.0

Existing View



Proposed View (Post Installation)



Existing View

Viewpoint 23 is located on Stone Bridge Road in the Town of Nelson, approximately 0.8 miles from the nearest proposed wind turbine that would be visible in the selected photo's field of view. This viewpoint occurs in the Agricultural/Rural Residential LSZ and is typical of views available to residents traveling local roads and those living in nearby homes. In the selected photo, the existing view to the northeast includes the surface of the road in the immediate foreground, bordered by a mowed shoulder and band of unmowed goldenrod. Behind the vegetation along the road shoulder, the middle ground includes a mix of managed agricultural fields, farm structures and equipment, and a patch of unmanaged successional old field vegetation. Beyond the fields, a band of trees defines the edge of a woodlot that follows the gently rolling topography up to an undulating horizon line that blocks views of more distant landscape features. An overhead utility line, set well back from the road edge, is the only interruption to an otherwise clear and open sky. The rolling hills enclose the view, and the presence of agricultural fields and farm structures equipment give the view a strong rural/agricultural character. Scenic quality of the existing view was characterized as high by the rating panel.

Proposed View

With the proposed Project in place, two wind turbines and a steel lattice met tower are prominent new additions to the view. The vertical line of these new structures is consistent with the existing utility poles, but their scale contrast with the existing landform and vegetation is notable. Shadowing from the sun also makes these structures stand out against the clear blue sky. The turbines and met tower do not appear totally out of place in a working agricultural landscape with existing built features already present. However, they are somewhat discordant features that serve as focal points adding visual clutter to the view, and the vertical line of these components was viewed to have moderate to appreciable contrast with the horizontal landscape.

Hoffman Falls Wind Project

Towns of Eaton, Fenner, Nelson, and Smithfield, Madison County, New York



EXISTING VIEW



*Note: Printed at actual size, the existing view image is 15 inches wide by 10 inches high. At this size and focal length, the existing view image should be viewed from a distance 21 inches from the eye of the viewer.*



VIEWPOINT 23  
Stone Bridge Road

**Hoffman Falls Wind Project**  
Towns of Eaton, Fenner, Nelson, and Smithfield, Madison County, New York





PHOTOSIMULATION



*Note: Printed at actual size, the resulting simulation image is 15 inches wide by 10 inches high. At this size and focal length, the simulation should be viewed from a distance 21 inches from the eye of the viewer.*

0 1 in 2 in  
This scale is designed to insure the simulation images are printed at the intended size.

VIEWPOINT 23  
Stone Bridge Road

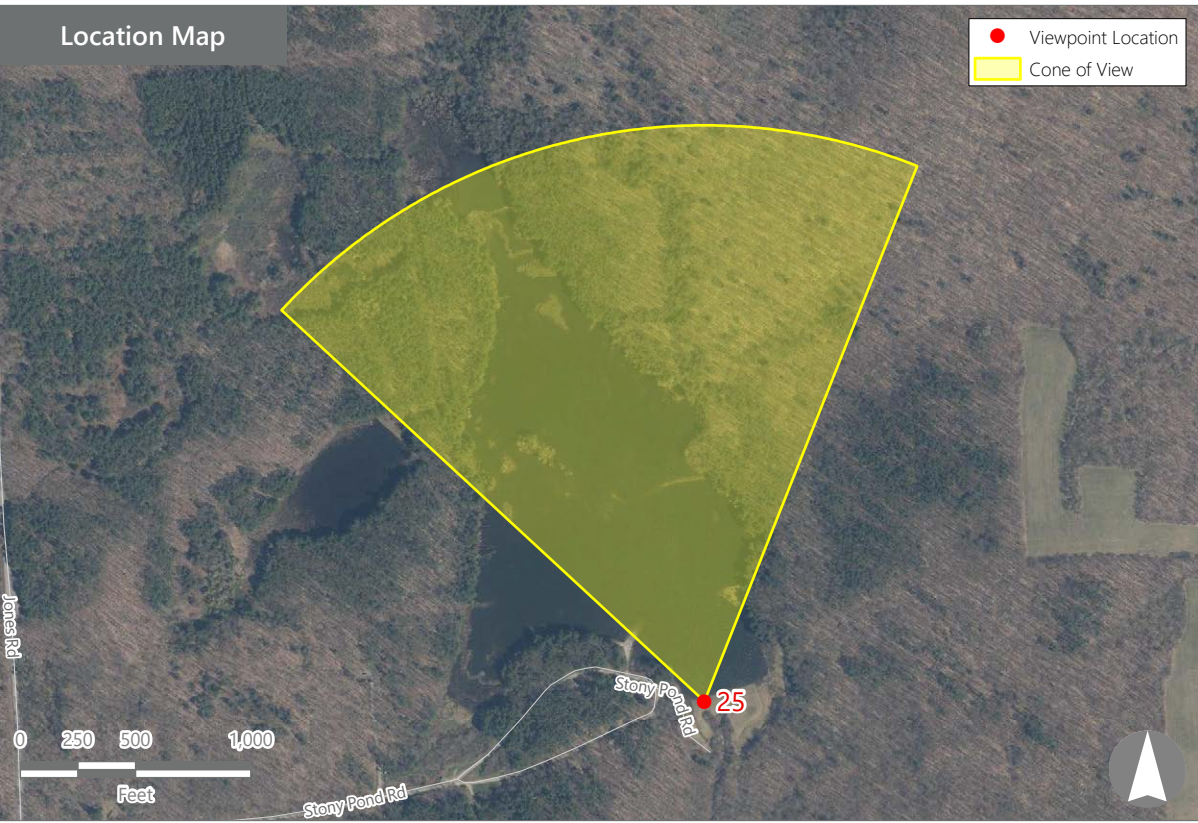
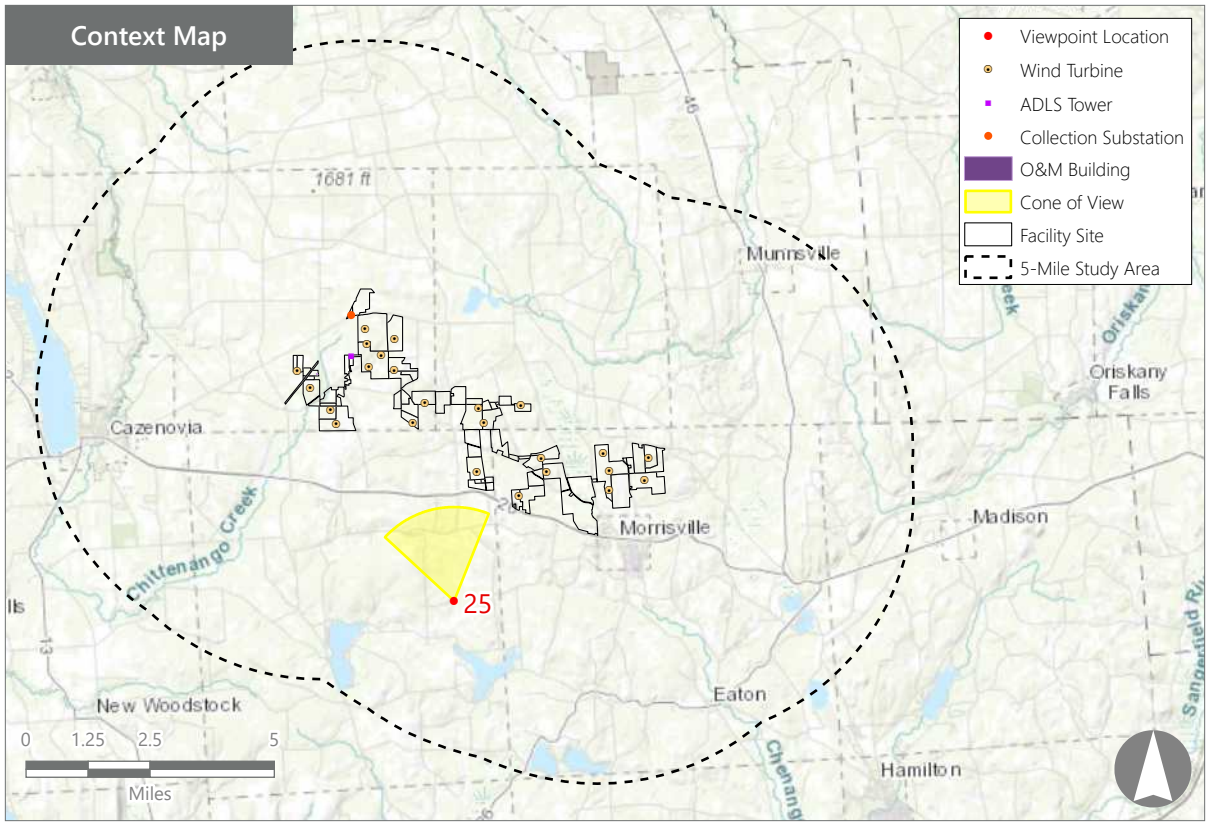
**Hoffman Falls Wind Project**  
Towns of Eaton, Fenner, Nelson, and Smithfield, Madison County, New York







*Note: The image above is a panorama photograph taken from Stoney Pond State Forest in the Town of Nelson panning clockwise from northwest (left) to northeast (right). The green rectangle represents the extent of the simulated photograph.*



VIEWPOINT 25

Stoney Pond State Forest

VIEWPOINT INFORMATION

**Location:** Stoney Pond State Forest

**Town:** Nelson

**County:** Madison

**Latitude:** 42.88129° N

**Longitude:** 75.71224° W

LOCATION INFORMATION

**Distance Zone Represented in View:** Middle

Ground

**Viewer Distance\*:** 2.6 miles

**Landscape Similarity Zone:** Water

**Viewer/User Group(s):** Local Residents, Tourists/

Recreational Users

**Visually Sensitive Resource(s):** Stoney Pond,

Stoney Pond State Forest

PHOTOGRAPH INFORMATION

**Date:** August 31, 2023

**Time:** 11:45 AM

**Camera:** Canon EOS 5D Mark IV

**Resolution:** 24 Megapixels

**Lens Focal Length (35mm equivalent):** 50 mm

**Camera Elevation:** 1,544 feet

**Field of View:** 39 degrees

**Direction of View:** North-northwest

**Printed Size:** 10" x 15"

**Viewing Distance\*\*:** 21"

NOTES

\*Distance as measured from the viewpoint to the closest wind turbine generator within the simulated photograph's field of view

\*\*The simulation is at the correct perspective when printed on an 11 inch by 17 inch sheet at full scale, and viewed approximately 21 inches from the eye of the viewer.

Hoffman Falls Wind Project

Towns of Eaton, Fenner, Nelson, and Smithfield, Madison County, New York

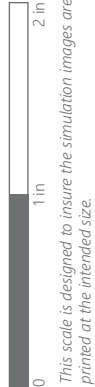
Visual Impact Assessment  
Appendix 8-A





EXISTING VIEW

*Note: Printed at actual size, the existing view image is 15 inches wide by 10 inches high. At this size and focal length, the existing view image should be viewed from a distance 21 inches from the eye of the viewer.*



VIEWPOINT 25  
Stoney Pond State Forest

**Hoffman Falls Wind Project**  
Towns of Eaton, Fenner, Nelson, and Smithfield, Madison County, New York





WIREFRAME RENDERING



## Hoffman Falls Wind Project

Towns of Eaton, Fenner, Nelson, and Smithfield, Madison County, New York

VIEWPOINT 25

Stoney Pond State Forest



This scale is designed to insure the simulation images are printed at the intended size.



EXISTING VIEW



*Note: Printed at actual size, the existing view image is 15 inches wide by 10 inches high. At this size and focal length, the existing view image should be viewed from a distance 21 inches from the eye of the viewer.*



VIEWPOINT 25  
Stoney Pond State Forest

**Hoffman Falls Wind Project**  
Towns of Eaton, Fenner, Nelson, and Smithfield, Madison County, New York





WIREFRAME RENDERING



*Note: Printed at actual size, the resulting simulation image is 15 inches wide by 10 inches high. At this size and focal length, the simulation should be viewed from a distance 21 inches from the eye of the viewer.*



VIEWPOINT 25  
Stoney Pond State Forest

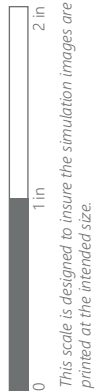
**Hoffman Falls Wind Project**  
Towns of Eaton, Fenner, Nelson, and Smithfield, Madison County, New York



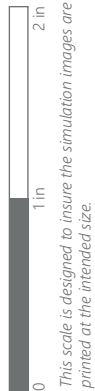




VIEWPOINT 25  
Stoney Pond State Forest

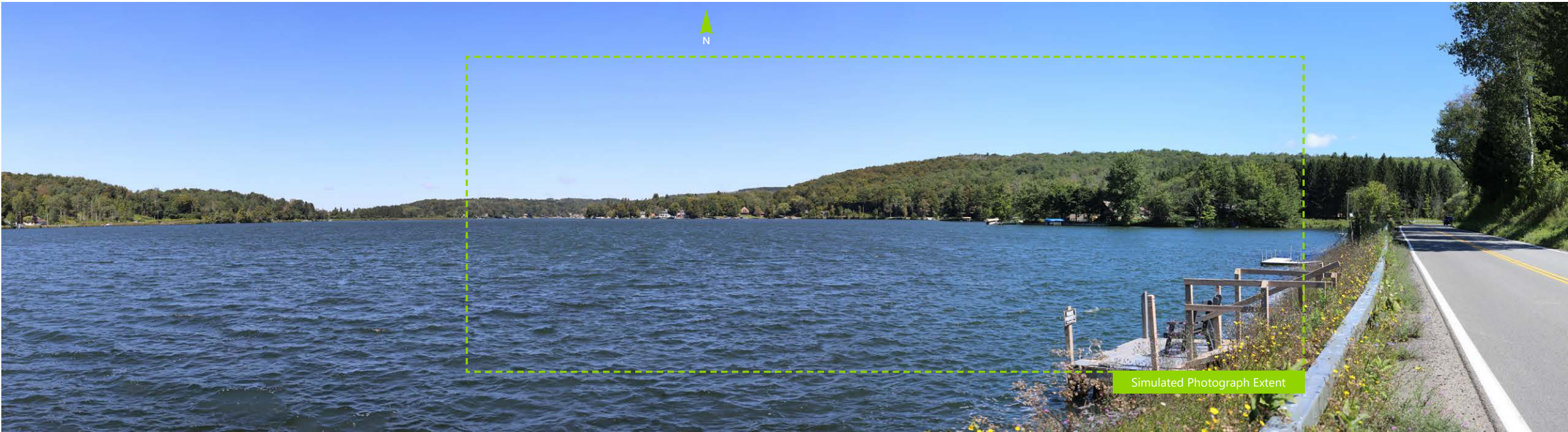






VIEWPOINT 25  
Stoney Pond State Forest





*Note: The image above is a panorama photograph taken from Tuscarora Road in the Town of Nelson panning clockwise from northwest (left) to northeast (right). The green rectangle represents the extent of the simulated photograph.*

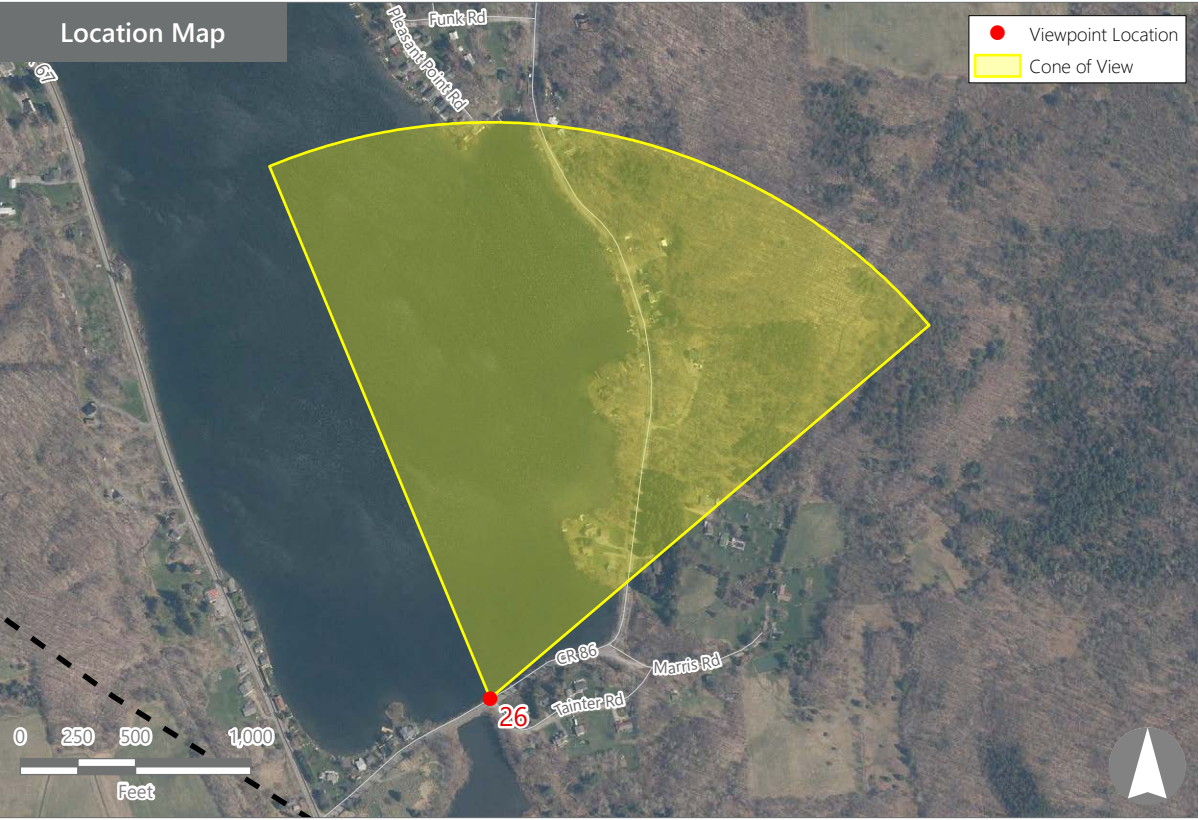
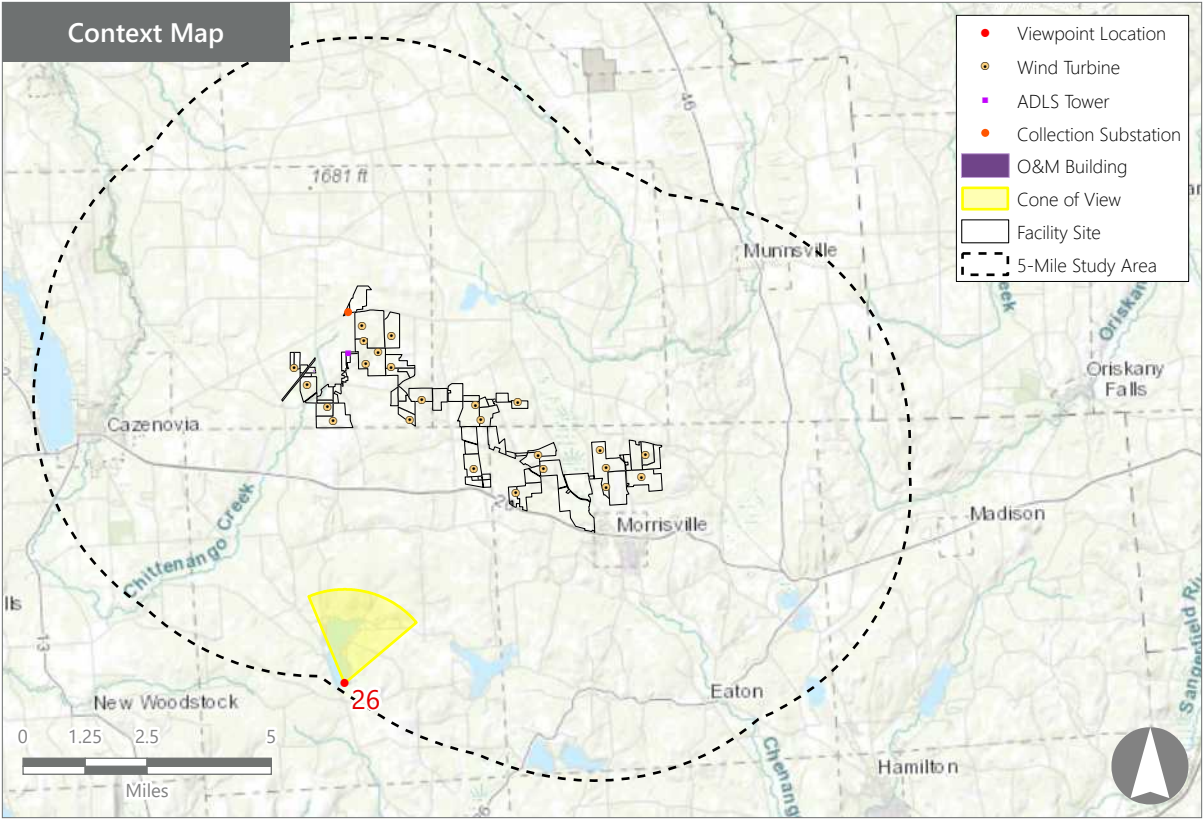
**VIEWPOINT 26**  
Tuscarora Road

**VIEWPOINT INFORMATION**

**Location:** Tuscarora Road  
**Town:** Nelson  
**County:** Madison  
**Latitude:** 42.85672° N  
**Longitude:** 75.75474° W

**LOCATION INFORMATION**

**Distance Zone Represented in View:** Background  
**Viewer Distance\*:** 5.0 miles  
**Landscape Similarity Zone:** Water  
**Viewer/User Group(s):** Local Residents, Through-Travelers, Tourists/Recreational Users  
**Visually Sensitive Resource(s):** Tuscarora Lake



**PHOTOGRAPH INFORMATION**

**Date:** August 31, 2023  
**Time:** 12:03 PM  
**Camera:** Canon EOS 5D Mark IV  
**Resolution:** 24 Megapixels  
**Lens Focal Length (35mm equivalent):** 50 mm  
**Camera Elevation:** 15,18 feet  
**Field of View:** 39 degrees  
**Direction of View:** North-northeast  
**Printed Size:** 10" x 15"  
**Viewing Distance\*\*:** 21"

**NOTES**

\*Distance as measured from the viewpoint to the closest wind turbine generator within the simulated photograph's field of view

\*\*The simulation is at the correct perspective when printed on an 11 inch by 17 inch sheet at full scale, and viewed approximately 21 inches from the eye of the viewer.

**Hoffman Falls Wind Project**  
Towns of Eaton, Fenner, Nelson, and Smithfield, Madison County, New York

Visual Impact Assessment  
Appendix 8-A



EXISTING VIEW



*Note: Printed at actual size, the existing view image is 15 inches wide by 10 inches high. At this size and focal length, the existing view image should be viewed from a distance 21 inches from the eye of the viewer.*



VIEWPOINT 26  
Tuscarora Road

**Hoffman Falls Wind Project**  
Towns of Eaton, Fenner, Nelson, and Smithfield, Madison County, New York

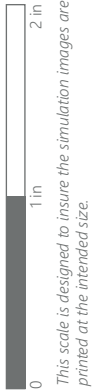




WIREFRAME RENDERING



*Note: Printed at actual size, the resulting simulation image is 15 inches wide by 10 inches high. At this size and focal length, the simulation should be viewed from a distance 21 inches from the eye of the viewer.*



VIEWPOINT 26  
Tuscarora Road

**Hoffman Falls Wind Project**  
Towns of Eaton, Fenner, Nelson, and Smithfield, Madison County, New York

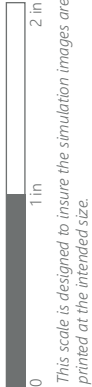




EXISTING VIEW



*Note: Printed at actual size, the existing view image is 15 inches wide by 10 inches high. At this size and focal length, the existing view image should be viewed from a distance 21 inches from the eye of the viewer.*



VIEWPOINT 26  
Tuscarora Road

**Hoffman Falls Wind Project**  
Towns of Eaton, Fenner, Nelson, and Smithfield, Madison County, New York

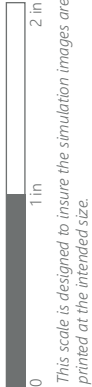




WIREFRAME RENDERING



*Note: Printed at actual size, the resulting simulation image is 15 inches wide by 10 inches high. At this size and focal length, the simulation should be viewed from a distance 21 inches from the eye of the viewer.*

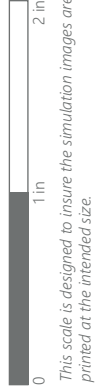


VIEWPOINT 26  
Tuscarora Road

**Hoffman Falls Wind Project**  
Towns of Eaton, Fenner, Nelson, and Smithfield, Madison County, New York





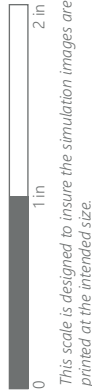


VIEWPOINT 26  
Tuscarora Road





VIEWPOINT 26  
Tuscarora Road







Note: The image above is a panorama photograph taken from Chenango Street in the Town of Eaton panning clockwise from west (left) to northeast (right). The green rectangle represents the extent of the simulated photograph.

**VIEWPOINT 33**  
Chenango Street

**VIEWPOINT INFORMATION**

**Location:** Chenango Street  
**Town:** Eaton  
**County:** Madison  
**Latitude:** 42.89851° N  
**Longitude:** 75.64173° W

**LOCATION INFORMATION**

**Distance Zone Represented in View:** Middle  
Ground  
**Viewer Distance\*:** 2.2 miles  
**Landscape Similarity Zone:** Village  
**Viewer/User Group(s):** Local Residents, Through-Travelers

**Visually Sensitive Resource(s):** US Route 20, Scenic Route 20, Bicentennial Architectural Trail, Village of Morrisville, Old Madison County Courthouse, Morrisville Engine House, Bicknell Hall, a two-story brick Colonial Revival-style academic building, Methodist Church, Morrisville Village Historic District, Brooks Hall, SUNY College of Agriculture and Technology at Morrisville Historic District, State University of New York College of Agriculture and Technology at Morrisville

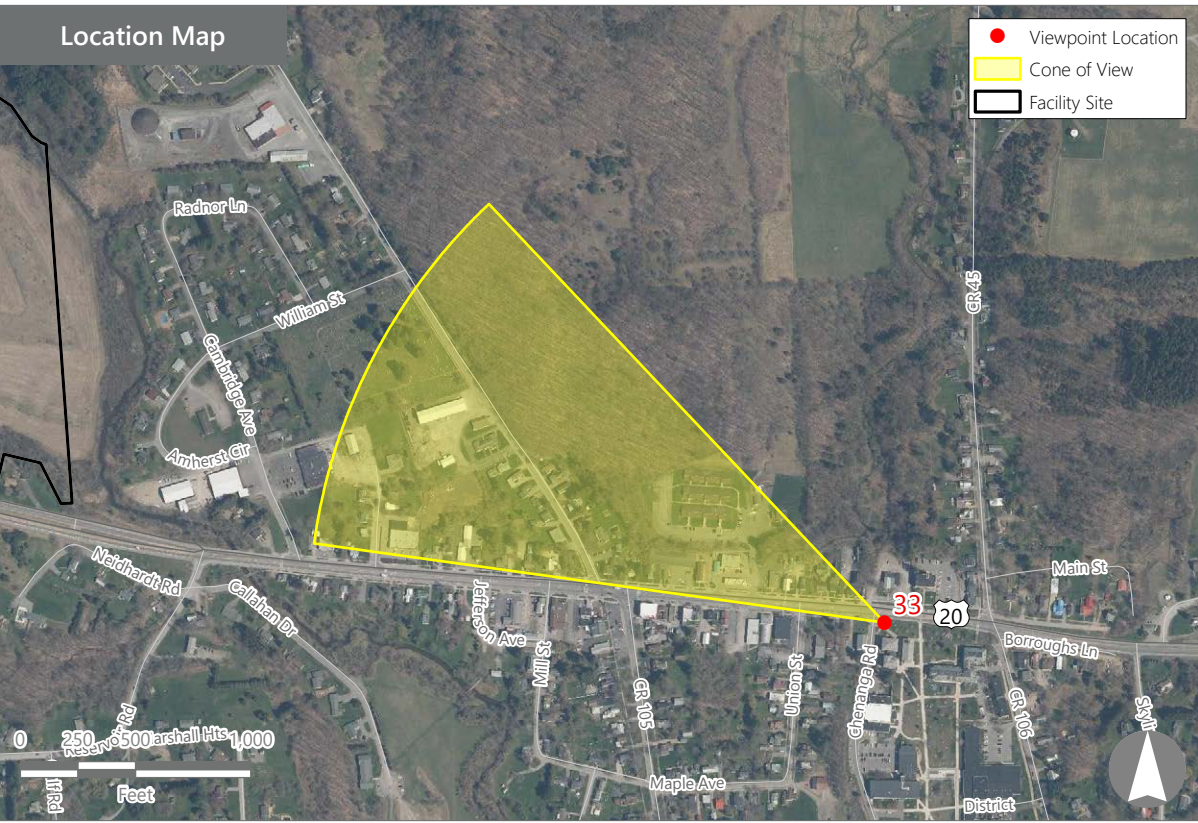
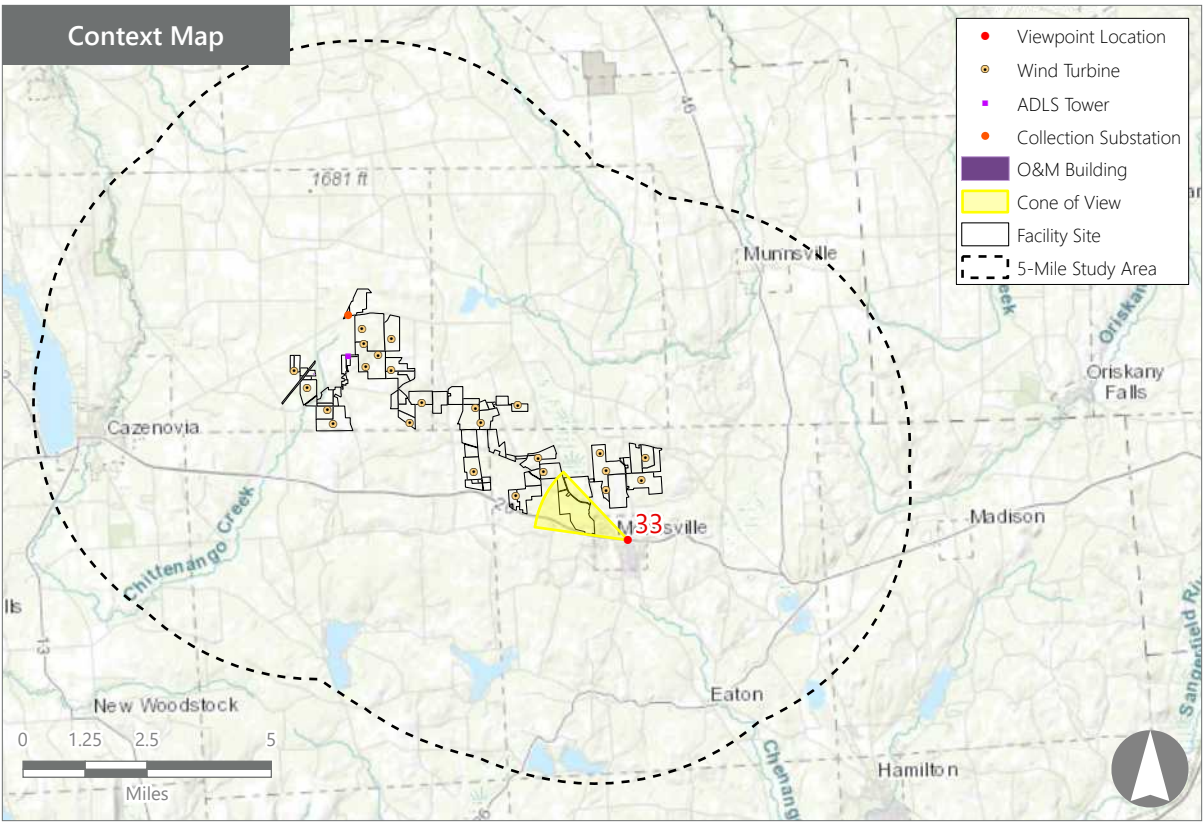
**PHOTOGRAPH INFORMATION**

**Date:** August 31, 2023  
**Time:** 1:34 PM  
**Camera:** Canon EOS 5D Mark IV  
**Resolution:** 24 Megapixels  
**Lens Focal Length (35mm equivalent):** 50 mm  
**Camera Elevation:** 1,3922 feet  
**Field of View:** 39 degrees  
**Direction of View:** West-northwest  
**Printed Size:** 10" x 15"  
**Viewing Distance\*\*:** 21"

**NOTES**

\*Distance as measured from the viewpoint to the closest wind turbine generator within the simulated photograph's field of view

\*\*The simulation is at the correct perspective when printed on an 11 inch by 17 inch sheet at full scale, and viewed approximately 21 inches from the eye of the viewer.



**Hoffman Falls Wind Project**

Towns of Eaton, Fenner, Nelson, and Smithfield, Madison County, New York

Visual Impact Assessment  
Appendix 8-A