



Field Data Sheet





Field Data Sheet

Notes :

Do you need to report observations of another open field?

Yes



Field Data Sheet

Corresponding Point ID(s): 44

Anthropogenic Disturbance/Management Practices: Traffic Noise

Primary Open Field Cover Type: Field Cropland (including hay, wheat, oats, etc.)

Estimated Grass Cover (%): 25-50%

Estimated Forb Cover (%): 10-25%

Estimated Woody Vegetation Cover (%): None

Estimated Bare Ground (%): None

Estimated Litter Depth (inches): 0-1"

Average Vegetation Height (inches): 6-12

Dominant Plant Species (Common Names): Grass, buttercup, clover

Invasive Plant Species (Common Names):

Representative Photo(s):





Field Data Sheet





Field Data Sheet

Notes :

Do you need to report observations of another open field?

Yes



Field Data Sheet

Corresponding Point ID(s): 43

Anthropogenic Disturbance/Management Practices: Traffic Noise

Primary Open Field Cover Type: Field Cropland (including hay, wheat, oats, etc.)

Estimated Grass Cover (%): 50-90%

Estimated Forb Cover (%): 10-25%

Estimated Woody Vegetation Cover (%): None

Estimated Bare Ground (%): None

Estimated Litter Depth (inches): 0-1"

Average Vegetation Height (inches): 4-6

Dominant Plant Species (Common Names): Grass, red clover

Invasive Plant Species (Common Names):

Representative Photo(s):





Field Data Sheet





Field Data Sheet

Notes :

Do you need to report observations of another open field?

Yes



Field Data Sheet

Corresponding Point ID(s): 42

Anthropogenic Disturbance/Management Practices: Construction Noise

Primary Open Field Cover Type: Field Cropland (including hay, wheat, oats, etc.)

Estimated Grass Cover (%): 50-90%

Estimated Forb Cover (%): 10-25%

Estimated Woody Vegetation Cover (%): None

Estimated Bare Ground (%): None

Estimated Litter Depth (inches): 0-1"

Average Vegetation Height (inches): 4-6

Dominant Plant Species (Common Names): Grass, buttercup, clover

Invasive Plant Species (Common Names):

Representative Photo(s):





Field Data Sheet





Field Data Sheet

Notes :

Do you need to report observations of another open field?

Yes



Field Data Sheet

Corresponding Point ID(s): 46

Anthropogenic Disturbance/Management Practices: Traffic Noise

Primary Open Field Cover Type: Field Cropland (including hay, wheat, oats, etc.)

Estimated Grass Cover (%): 50-90%

Estimated Forb Cover (%): 10-25%

Estimated Woody Vegetation Cover (%): None

Estimated Bare Ground (%): None

Estimated Litter Depth (inches): 0-1"

Average Vegetation Height (inches): 4-6

Dominant Plant Species (Common Names): Grass, clover

Invasive Plant Species (Common Names):

Representative Photo(s):





Field Data Sheet





Field Data Sheet

Notes :

Do you need to report observations of another open field?

Yes



Field Data Sheet

Corresponding Point ID(s): 34

Anthropogenic Disturbance/Management Practices: None notable

Primary Open Field Cover Type: Row Cropland (Active)

Estimated Grass Cover (%): 1-10%

Estimated Forb Cover (%): 1-10%

Estimated Woody Vegetation Cover (%): None

Estimated Bare Ground (%): 50-90%

Estimated Litter Depth (inches): None

Average Vegetation Height (inches): 4-6

Dominant Plant Species (Common Names): Grass, yellow rocket

Invasive Plant Species (Common Names):

Representative Photo(s):





Field Data Sheet





Field Data Sheet

Notes :

Do you need to report observations of another open field?

Yes



Field Data Sheet

Corresponding Point ID(s): 35

Anthropogenic Disturbance/Management Practices: Traffic Noise

Primary Open Field Cover Type: Field Cropland (including hay, wheat, oats, etc.)

Estimated Grass Cover (%): 50-90%

Estimated Forb Cover (%): 10-25%

Estimated Woody Vegetation Cover (%): None

Estimated Bare Ground (%): None

Estimated Litter Depth (inches): 0-1"

Average Vegetation Height (inches): 4-6

Dominant Plant Species (Common Names): Grass, clover, buttercup, vetch

Invasive Plant Species (Common Names):

Representative Photo(s):





Field Data Sheet





Field Data Sheet

Notes :

Do you need to report observations of another open field?

Yes



Field Data Sheet

Corresponding Point ID(s): 35.1

Anthropogenic Disturbance/Management Practices: Traffic Noise

Primary Open Field Cover Type: Field Cropland (including hay, wheat, oats, etc.)

Estimated Grass Cover (%): 50-90%

Estimated Forb Cover (%): 10-25%

Estimated Woody Vegetation Cover (%): None

Estimated Bare Ground (%): None

Estimated Litter Depth (inches): 0-1"

Average Vegetation Height (inches): 4-6

Dominant Plant Species (Common Names): Grass, clover, bedstraw

Invasive Plant Species (Common Names):

Representative Photo(s):





Field Data Sheet





Field Data Sheet

Notes :

Do you need to report observations of another open field?

Yes



Field Data Sheet

Corresponding Point ID(s): 18

Anthropogenic Disturbance/Management Practices: ATV/Other Vehicle Noise

Primary Open Field Cover Type: Field Cropland (including hay, wheat, oats, etc.)

Estimated Grass Cover (%): 90-100%

Estimated Forb Cover (%): 1-10%

Estimated Woody Vegetation Cover (%): None

Estimated Bare Ground (%): None

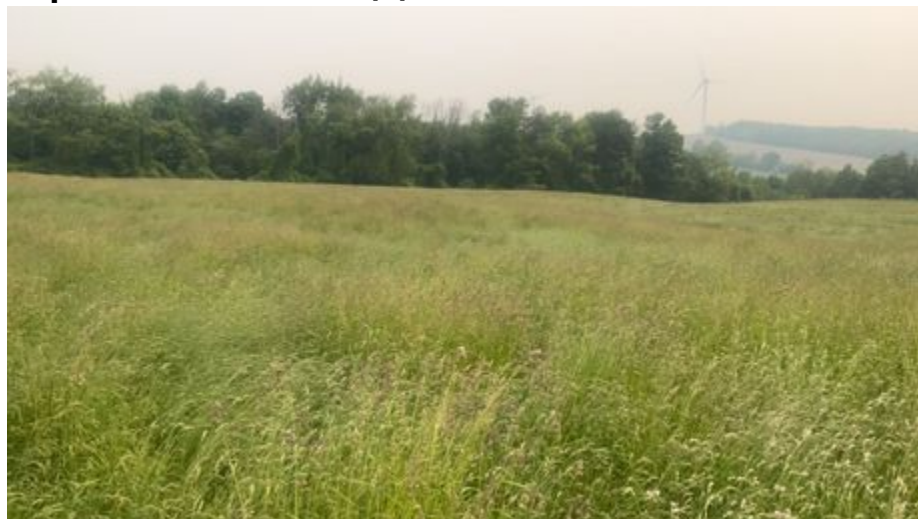
Estimated Litter Depth (inches): 0-1"

Average Vegetation Height (inches): 24-30

Dominant Plant Species (Common Names): Grass, alfalfa

Invasive Plant Species (Common Names):

Representative Photo(s):





Field Data Sheet





Field Data Sheet

Notes :

Do you need to report observations of another open field?

Yes



Field Data Sheet

Corresponding Point ID(s): 19

Anthropogenic Disturbance/Management Practices: Traffic Noise

Primary Open Field Cover Type: Row Cropland (Active)

Estimated Grass Cover (%): None

Estimated Forb Cover (%): 1-10%

Estimated Woody Vegetation Cover (%): None

Estimated Bare Ground (%): 90-100%

Estimated Litter Depth (inches): None

Average Vegetation Height (inches): 0-2

Dominant Plant Species (Common Names): Soy

Invasive Plant Species (Common Names):

Representative Photo(s):





Field Data Sheet





Field Data Sheet

Notes :

Do you need to report observations of another open field?

Yes



Field Data Sheet

Corresponding Point ID(s): 20

Anthropogenic Disturbance/Management Practices: None notable

Primary Open Field Cover Type: Row Cropland (Active)

Estimated Grass Cover (%): None

Estimated Forb Cover (%): None

Estimated Woody Vegetation Cover (%): None

Estimated Bare Ground (%): 90-100%

Estimated Litter Depth (inches): None

Average Vegetation Height (inches): 0 (None)

Dominant Plant Species (Common Names):

Invasive Plant Species (Common Names):

Representative Photo(s):





Field Data Sheet





Field Data Sheet

Notes :

Do you need to report observations of another open field?

No



Field Data Sheet

Weather Conditions at End of Survey

Temperature (°F): 62

Wind Speed (mph): 4 – 7 (Light Breeze; Leaves rustle)

Wind Direction: NW

Cloud Cover: Overcast (90-100%)

Visibility: Fair (0.62-10 miles; mist or light/moderate precipitation)

Precipitation: Other - Describe in notes

Weather Notes: Wildfire smoke haze

Were there any notable weather events/changes during the survey? Yes

Bird Observation Summary

Were any Endangered/Threatened Species observed?

No

Were any Species of Special Concern observed?

No

Were probable, possible, or confirmed breeding behaviors observed for any Listed Species (Endangered/Threatened/Special Concern)?

No

Were there additional photos documenting birds observed, habitat conditions, and/or other features of interest?

No

Additional Photo(s):

Were any alternate point count survey locations used due to access or visual constraints?

No

Alternate Point Count Survey Locations:



Field Data Sheet

**Incidental bird species observed outside of timed point count surveys
(Alpha Codes or Common Names):**

ROPI

Overall Survey Notes:



Field Data Sheet

Breeding Bird Survey

Submitted By: bsmith@edrdpc.com

Submitted Time: June 8, 2023 9:51 AM

Survey Information

Project Name: Hoffman Falls

Survey Date: June 8, 2023

Surveyor Name: Brooke Smith

Points Surveyed: 50,51,54,55, 60-68

Survey Start Time: 05:08

Survey End Time: 09:17

Weather Conditions at Start of Survey

Temperature (°F): 48

Wind Speed (mph): 1 – 3 (Light Air; Smoke drifts)

Wind Direction: W

Cloud Cover: Overcast (90-100%)

Visibility: Fair (0.62-10 miles; mist or light/moderate precipitation)

Precipitation: Fog

Weather Notes: Heavy fog decreasing visibility



Field Data Sheet

Open Field Condition Observations

Corresponding Point ID(s): 60

Anthropogenic Disturbance/Management Practices: None notable

Primary Open Field Cover Type: Pastureland

Estimated Grass Cover (%): 90-100%

Estimated Forb Cover (%): 1-10%

Estimated Woody Vegetation Cover (%): None

Estimated Bare Ground (%): None

Estimated Litter Depth (inches): None

Average Vegetation Height (inches): 4-6

Dominant Plant Species (Common Names): Grasses

Invasive Plant Species (Common Names):

Representative Photo(s):





Field Data Sheet





Field Data Sheet

Notes :

Do you need to report observations of another open field?

Yes



Field Data Sheet

Corresponding Point ID(s): 55

Anthropogenic Disturbance/Management Practices: None notable

Primary Open Field Cover Type: Row Cropland (Active)

Estimated Grass Cover (%): 90-100%

Estimated Forb Cover (%): 10-25%

Estimated Woody Vegetation Cover (%): None

Estimated Bare Ground (%): None

Estimated Litter Depth (inches): 1-3"

Average Vegetation Height (inches): 4-6

Dominant Plant Species (Common Names): Grass, corn

Invasive Plant Species (Common Names):

Representative Photo(s):





Field Data Sheet





Field Data Sheet

Notes :

Do you need to report observations of another open field?

Yes



Field Data Sheet

Corresponding Point ID(s): 62

Anthropogenic Disturbance/Management Practices: None notable

Primary Open Field Cover Type: Pastureland

Estimated Grass Cover (%): 90-100%

Estimated Forb Cover (%): None

Estimated Woody Vegetation Cover (%): None

Estimated Bare Ground (%): None

Estimated Litter Depth (inches): None

Average Vegetation Height (inches): 4-6

Dominant Plant Species (Common Names): Grass

Invasive Plant Species (Common Names):

Representative Photo(s):





Field Data Sheet





Field Data Sheet

Notes :

Do you need to report observations of another open field?

Yes



Field Data Sheet

Corresponding Point ID(s): 63

Anthropogenic Disturbance/Management Practices: Traffic Noise

Primary Open Field Cover Type: Pastureland

Estimated Grass Cover (%): 90-100%

Estimated Forb Cover (%): None

Estimated Woody Vegetation Cover (%): None

Estimated Bare Ground (%): None

Estimated Litter Depth (inches): 1-3"

Average Vegetation Height (inches): 4-6

Dominant Plant Species (Common Names): Grass

Invasive Plant Species (Common Names):

Representative Photo(s):





Field Data Sheet





Field Data Sheet

Notes :

Do you need to report observations of another open field?

Yes



Field Data Sheet

Corresponding Point ID(s): 61

Anthropogenic Disturbance/Management Practices: None notable

Primary Open Field Cover Type: Pastureland

Estimated Grass Cover (%): 25-50%

Estimated Forb Cover (%): 25-50%

Estimated Woody Vegetation Cover (%): None

Estimated Bare Ground (%): 1-10%

Estimated Litter Depth (inches): None

Average Vegetation Height (inches): 2-4

Dominant Plant Species (Common Names): Grass, wildflowers

Invasive Plant Species (Common Names):

Representative Photo(s):





Field Data Sheet





Field Data Sheet

Notes :

Do you need to report observations of another open field?

Yes



Field Data Sheet

Corresponding Point ID(s): 64

Anthropogenic Disturbance/Management Practices: None notable

Primary Open Field Cover Type: Field Cropland (including hay, wheat, oats, etc.)

Estimated Grass Cover (%): 1-10%

Estimated Forb Cover (%): None

Estimated Woody Vegetation Cover (%): None

Estimated Bare Ground (%): 90-100%

Estimated Litter Depth (inches): 0-1"

Average Vegetation Height (inches): 0-2

Dominant Plant Species (Common Names): Grass sprouting

Invasive Plant Species (Common Names):

Representative Photo(s):





Field Data Sheet





Field Data Sheet

Notes :

Do you need to report observations of another open field?

Yes



Field Data Sheet

Corresponding Point ID(s): 65

Anthropogenic Disturbance/Management Practices: None notable

Primary Open Field Cover Type: Row Cropland (Fallow)

Estimated Grass Cover (%): 10-25%

Estimated Forb Cover (%): 1-10%

Estimated Woody Vegetation Cover (%): None

Estimated Bare Ground (%): 50-90%

Estimated Litter Depth (inches): 0-1"

Average Vegetation Height (inches): 6-12

Dominant Plant Species (Common Names): Grass

Invasive Plant Species (Common Names):

Representative Photo(s):





Field Data Sheet





Field Data Sheet

Notes :

Do you need to report observations of another open field?

Yes



Field Data Sheet

Corresponding Point ID(s): 66

Anthropogenic Disturbance/Management Practices: Traffic Noise

Primary Open Field Cover Type: Field Cropland (including hay, wheat, oats, etc.)

Estimated Grass Cover (%): 90-100%

Estimated Forb Cover (%): None

Estimated Woody Vegetation Cover (%): None

Estimated Bare Ground (%): None

Estimated Litter Depth (inches): 0-1"

Average Vegetation Height (inches): 6-12

Dominant Plant Species (Common Names): Grass

Invasive Plant Species (Common Names):

Representative Photo(s):





Field Data Sheet





Field Data Sheet

Notes :

Do you need to report observations of another open field?

Yes



Field Data Sheet

Corresponding Point ID(s): 67

Anthropogenic Disturbance/Management Practices: Traffic Noise

Primary Open Field Cover Type: Row Cropland (Active)

Estimated Grass Cover (%): None

Estimated Forb Cover (%): 1-10%

Estimated Woody Vegetation Cover (%): None

Estimated Bare Ground (%): 90-100%

Estimated Litter Depth (inches): 0-1"

Average Vegetation Height (inches): 0-2

Dominant Plant Species (Common Names): Bean sprouts

Invasive Plant Species (Common Names):

Representative Photo(s):





Field Data Sheet





Field Data Sheet

Notes :

Do you need to report observations of another open field?

Yes



Field Data Sheet

Corresponding Point ID(s): 68

Anthropogenic Disturbance/Management Practices: Traffic Noise

Primary Open Field Cover Type: Row Cropland (Active)

Estimated Grass Cover (%): None

Estimated Forb Cover (%): 10-25%

Estimated Woody Vegetation Cover (%): None

Estimated Bare Ground (%): 50-90%

Estimated Litter Depth (inches): 0-1"

Average Vegetation Height (inches): 0-2

Dominant Plant Species (Common Names): Bean sprouts

Invasive Plant Species (Common Names):

Representative Photo(s):





Field Data Sheet





Field Data Sheet

Notes :

Do you need to report observations of another open field?

Yes



Field Data Sheet

Corresponding Point ID(s): 54

Anthropogenic Disturbance/Management Practices: None notable

Primary Open Field Cover Type: Field Cropland (including hay, wheat, oats, etc.)

Estimated Grass Cover (%): 10-25%

Estimated Forb Cover (%): None

Estimated Woody Vegetation Cover (%): None

Estimated Bare Ground (%): 50-90%

Estimated Litter Depth (inches): 0-1"

Average Vegetation Height (inches): 0-2

Dominant Plant Species (Common Names): Grass

Invasive Plant Species (Common Names):

Representative Photo(s):





Field Data Sheet





Field Data Sheet

Notes :

Do you need to report observations of another open field?

Yes



Field Data Sheet

Corresponding Point ID(s): 50.1

Anthropogenic Disturbance/Management Practices: None notable

Primary Open Field Cover Type: Field Cropland (including hay, wheat, oats, etc.)

Estimated Grass Cover (%): 90-100%

Estimated Forb Cover (%): None

Estimated Woody Vegetation Cover (%): None

Estimated Bare Ground (%): None

Estimated Litter Depth (inches): None

Average Vegetation Height (inches): 24-30

Dominant Plant Species (Common Names): Grass

Invasive Plant Species (Common Names):

Representative Photo(s):





Field Data Sheet





Field Data Sheet

Notes :

Do you need to report observations of another open field?

Yes



Field Data Sheet

Corresponding Point ID(s): 50

Anthropogenic Disturbance/Management Practices: None notable

Primary Open Field Cover Type: Field Cropland (including hay, wheat, oats, etc.)

Estimated Grass Cover (%): 90-100%

Estimated Forb Cover (%): None

Estimated Woody Vegetation Cover (%): None

Estimated Bare Ground (%): None

Estimated Litter Depth (inches): None

Average Vegetation Height (inches): 24-30

Dominant Plant Species (Common Names): Grass

Invasive Plant Species (Common Names):

Representative Photo(s):





Field Data Sheet





Field Data Sheet

Notes :

Do you need to report observations of another open field?

Yes



Field Data Sheet

Corresponding Point ID(s): 51

Anthropogenic Disturbance/Management Practices: None notable

Primary Open Field Cover Type: Row Cropland (Fallow)

Estimated Grass Cover (%): 10-25%

Estimated Forb Cover (%): None

Estimated Woody Vegetation Cover (%): None

Estimated Bare Ground (%): 50-90%

Estimated Litter Depth (inches): 0-1"

Average Vegetation Height (inches): 4-6

Dominant Plant Species (Common Names): Grass and milkweed

Invasive Plant Species (Common Names):

Representative Photo(s):





Field Data Sheet





Field Data Sheet

Notes :

Do you need to report observations of another open field?

No



Field Data Sheet

Weather Conditions at End of Survey

Temperature (°F): 50

Wind Speed (mph): 4 – 7 (Light Breeze; Leaves rustle)

Wind Direction: WNW

Cloud Cover: Overcast (90-100%)

Visibility: Fair (0.62-10 miles; mist or light/moderate precipitation)

Precipitation: Rain (Sustained/Heavy)

Weather Notes:

Were there any notable weather events/changes during the survey? Yes

Bird Observation Summary

Were any Endangered/Threatened Species observed?

No

Were any Species of Special Concern observed?

No

Were probable, possible, or confirmed breeding behaviors observed for any Listed Species (Endangered/Threatened/Special Concern)?

No

Were there additional photos documenting birds observed, habitat conditions, and/or other features of interest?

No

Additional Photo(s):

Were any alternate point count survey locations used due to access or visual constraints?

Yes



Field Data Sheet

Alternate Point Count Survey Locations: 61 and 60 due to enclosed cow pasture

Incidental bird species observed outside of timed point count surveys (Alpha Codes or Common Names):

Overall Survey Notes:

Ended survey early due to increased rain and significant decrease in activity



Field Data Sheet

Breeding Bird Survey

Submitted By: jkearney@edrdpc.com

Submitted Time: June 8, 2023 1:28 PM

Survey Information

Project Name: Hoffman Falls

Survey Date: June 8, 2023

Surveyor Name: James Kearney

Points Surveyed: 69-80, 56-58, 59.1

Survey Start Time: 06:05

Survey End Time: 09:49

Weather Conditions at Start of Survey

Temperature (°F): 50

Wind Speed (mph): 1 – 3 (Light Air; Smoke drifts)

Wind Direction: NNW

Cloud Cover: Overcast (90-100%)

Visibility: Fair (0.62-10 miles; mist or light/moderate precipitation)

Precipitation: Rain (Intermittent/Light)

Weather Notes: Wildfire smoke



Field Data Sheet

Open Field Condition Observations

Corresponding Point ID(s): 69, 71

Anthropogenic Disturbance/Management Practices: None notable

Primary Open Field Cover Type: Field Cropland (including hay, wheat, oats, etc.)

Estimated Grass Cover (%): 50-90%

Estimated Forb Cover (%): 10-25%

Estimated Woody Vegetation Cover (%): None

Estimated Bare Ground (%): 1-10%

Estimated Litter Depth (inches): 0-1"

Average Vegetation Height (inches): 4-6

Dominant Plant Species (Common Names): Grass spp, clover spp, dandelion, bedstraw

Invasive Plant Species (Common Names):

Representative Photo(s):



Field Data Sheet





Field Data Sheet





Field Data Sheet



Notes :

Do you need to report observations of another open field?

Yes



Field Data Sheet

Corresponding Point ID(s): 70

Anthropogenic Disturbance/Management Practices: None notable

Primary Open Field Cover Type: Row Cropland (Active)

Estimated Grass Cover (%): 50-90%

Estimated Forb Cover (%): 1-10%

Estimated Woody Vegetation Cover (%): None

Estimated Bare Ground (%): 25-50%

Estimated Litter Depth (inches): None

Average Vegetation Height (inches): 2-4

Dominant Plant Species (Common Names): Corn

Invasive Plant Species (Common Names):

Representative Photo(s):





Field Data Sheet





Field Data Sheet



Notes :



Field Data Sheet

Do you need to report observations of another open field?

Yes



Field Data Sheet

Corresponding Point ID(s): 76

Anthropogenic Disturbance/Management Practices: None notable

Primary Open Field Cover Type: Field Cropland (including hay, wheat, oats, etc.)

Estimated Grass Cover (%): 50-90%

Estimated Forb Cover (%): 10-25%

Estimated Woody Vegetation Cover (%): None

Estimated Bare Ground (%): 1-10%

Estimated Litter Depth (inches): None

Average Vegetation Height (inches): 4-6

Dominant Plant Species (Common Names): Grass spp, clover spp, dandelion, bedstraw

Invasive Plant Species (Common Names):

Representative Photo(s):





Field Data Sheet





Field Data Sheet



Notes :



Field Data Sheet

Do you need to report observations of another open field?

Yes



Field Data Sheet

Corresponding Point ID(s): 76.1

Anthropogenic Disturbance/Management Practices: None notable

Primary Open Field Cover Type: Successional Old Field

Estimated Grass Cover (%): 10-25%

Estimated Forb Cover (%): 50-90%

Estimated Woody Vegetation Cover (%): 1-10%

Estimated Bare Ground (%): 1-10%

Estimated Litter Depth (inches): None

Average Vegetation Height (inches): 24-30

Dominant Plant Species (Common Names): Goldenrod, milkweed, grass spp, bedstraw

Invasive Plant Species (Common Names): Honeysuckle

Representative Photo(s):





Field Data Sheet





Field Data Sheet



Notes :



Field Data Sheet

Do you need to report observations of another open field?

Yes



Field Data Sheet

Corresponding Point ID(s): 72, 73

Anthropogenic Disturbance/Management Practices: None notable

Primary Open Field Cover Type: Field Cropland (including hay, wheat, oats, etc.)

Estimated Grass Cover (%): 50-90%

Estimated Forb Cover (%): 1-10%

Estimated Woody Vegetation Cover (%): None

Estimated Bare Ground (%): 10-25%

Estimated Litter Depth (inches): None

Average Vegetation Height (inches): 6-12

Dominant Plant Species (Common Names): Grass spp, milkweed

Invasive Plant Species (Common Names):

Representative Photo(s):





Field Data Sheet





Field Data Sheet



Notes :



Field Data Sheet

Do you need to report observations of another open field?

Yes



Field Data Sheet

Corresponding Point ID(s): 74, 75

Anthropogenic Disturbance/Management Practices: None notable

Primary Open Field Cover Type: Field Cropland (including hay, wheat, oats, etc.)

Estimated Grass Cover (%): 10-25%

Estimated Forb Cover (%): 50-90%

Estimated Woody Vegetation Cover (%): None

Estimated Bare Ground (%): 1-10%

Estimated Litter Depth (inches): None

Average Vegetation Height (inches): 4-6

Dominant Plant Species (Common Names): Grass spp, clover spp, dandelion

Invasive Plant Species (Common Names):

Representative Photo(s):





Field Data Sheet





Field Data Sheet



Notes :



Field Data Sheet

Do you need to report observations of another open field?

Yes



Field Data Sheet

Corresponding Point ID(s): 77, 78, 80

Anthropogenic Disturbance/Management Practices: None notable

Primary Open Field Cover Type: Field Cropland (including hay, wheat, oats, etc.)

Estimated Grass Cover (%): 25-50%

Estimated Forb Cover (%): 50-90%

Estimated Woody Vegetation Cover (%): None

Estimated Bare Ground (%): 1-10%

Estimated Litter Depth (inches): None

Average Vegetation Height (inches): 4-6

Dominant Plant Species (Common Names): Grass spp, clover spp, dandelion

Invasive Plant Species (Common Names):

Representative Photo(s):





Field Data Sheet





Field Data Sheet



Notes :



Field Data Sheet

Do you need to report observations of another open field?

Yes



Field Data Sheet

Corresponding Point ID(s): 79

Anthropogenic Disturbance/Management Practices: None notable

Primary Open Field Cover Type: Row Cropland (Active)

Estimated Grass Cover (%): 50-90%

Estimated Forb Cover (%): None

Estimated Woody Vegetation Cover (%): None

Estimated Bare Ground (%): 10-25%

Estimated Litter Depth (inches): None

Average Vegetation Height (inches): 6-12

Dominant Plant Species (Common Names): Grass spp, corn

Invasive Plant Species (Common Names):

Representative Photo(s):





Field Data Sheet





Field Data Sheet



Notes :



Field Data Sheet

Do you need to report observations of another open field?

Yes



Field Data Sheet

Corresponding Point ID(s): 56

Anthropogenic Disturbance/Management Practices: None notable

Primary Open Field Cover Type: Row Cropland (Active)

Estimated Grass Cover (%): 25-50%

Estimated Forb Cover (%): 10-25%

Estimated Woody Vegetation Cover (%): None

Estimated Bare Ground (%): 50-90%

Estimated Litter Depth (inches): 0-1"

Average Vegetation Height (inches): 4-6

Dominant Plant Species (Common Names): Corn, Grass spp, clover spp, dandelion, goldenrod

Invasive Plant Species (Common Names):

Representative Photo(s):





Field Data Sheet





Field Data Sheet



Notes :



Field Data Sheet

Do you need to report observations of another open field?

Yes



Field Data Sheet

Corresponding Point ID(s): 57

Anthropogenic Disturbance/Management Practices: None notable

Primary Open Field Cover Type: Field Cropland (including hay, wheat, oats, etc.)

Estimated Grass Cover (%): 50-90%

Estimated Forb Cover (%): 25-50%

Estimated Woody Vegetation Cover (%): None

Estimated Bare Ground (%): 1-10%

Estimated Litter Depth (inches): None

Average Vegetation Height (inches): 6-12

Dominant Plant Species (Common Names): Grass spp, clover spp, dandelion, bedstraw

Invasive Plant Species (Common Names):

Representative Photo(s):





Field Data Sheet





Field Data Sheet



Notes :



Field Data Sheet

Do you need to report observations of another open field?

Yes



Field Data Sheet

Corresponding Point ID(s): 58, 59.1

Anthropogenic Disturbance/Management Practices: None notable

Primary Open Field Cover Type: Pastureland

Estimated Grass Cover (%): 50-90%

Estimated Forb Cover (%): 25-50%

Estimated Woody Vegetation Cover (%): None

Estimated Bare Ground (%): 1-10%

Estimated Litter Depth (inches): 0-1"

Average Vegetation Height (inches): 12-18

Dominant Plant Species (Common Names): Grass spp, clover spp, dandelion, bedstraw, goldenrod

Invasive Plant Species (Common Names):

Representative Photo(s):





Field Data Sheet





Field Data Sheet



Notes :



Field Data Sheet

Do you need to report observations of another open field?

No

This figure has been redacted from this publicly available document because it contains protected/confidential information regarding the proposed facility location and/or the detailed locations of NYS threatened or endangered species.



Field Data Sheet

**Incidental bird species observed outside of timed point count surveys
(Alpha Codes or Common Names):**

Overall Survey Notes:



Field Data Sheet

Breeding Bird Survey

Submitted By: abutler@edrdpc.com

Submitted Time: June 9, 2023 11:41 AM

Survey Information

Project Name: Hoffman Falls

Survey Date: June 8, 2023

Surveyor Name: Anna Butler

Points Surveyed: 27-33, 33.1, 36-41, 49

Survey Start Time: 05:14

Survey End Time: 10:07

Weather Conditions at Start of Survey

Temperature (°F): 48

Wind Speed (mph): 1 – 3 (Light Air; Smoke drifts)

Wind Direction: NNW

Cloud Cover: Overcast (90-100%)

Visibility: Poor (<0.62 mile; fog or heavy precipitation)

Precipitation: Fog

Weather Notes: Fog and wildfire smoke mix



Field Data Sheet

Open Field Condition Observations

Corresponding Point ID(s): 49

Anthropogenic Disturbance/Management Practices: None notable

Primary Open Field Cover Type: Row Cropland (Active)

Estimated Grass Cover (%): 10-25%

Estimated Forb Cover (%): 10-25%

Estimated Woody Vegetation Cover (%): None

Estimated Bare Ground (%): 50-90%

Estimated Litter Depth (inches): None

Average Vegetation Height (inches): 4-6

Dominant Plant Species (Common Names): Grass, daisy, bedstraw

Invasive Plant Species (Common Names):

Representative Photo(s):





Field Data Sheet





Field Data Sheet

Notes :

Do you need to report observations of another open field?

Yes



Field Data Sheet

Corresponding Point ID(s): 41

Anthropogenic Disturbance/Management Practices: None notable

Primary Open Field Cover Type: Row Cropland (Fallow)

Estimated Grass Cover (%): 25-50%

Estimated Forb Cover (%): 1-10%

Estimated Woody Vegetation Cover (%): None

Estimated Bare Ground (%): 10-25%

Estimated Litter Depth (inches): 0-1"

Average Vegetation Height (inches): 6-12

Dominant Plant Species (Common Names): Grass, dandelion

Invasive Plant Species (Common Names):

Representative Photo(s):





Field Data Sheet





Field Data Sheet

Notes :

Do you need to report observations of another open field?

Yes



Field Data Sheet

Corresponding Point ID(s): 40

Anthropogenic Disturbance/Management Practices: Traffic Noise

Primary Open Field Cover Type: Row Cropland (Fallow)

Estimated Grass Cover (%): None

Estimated Forb Cover (%): 25-50%

Estimated Woody Vegetation Cover (%): None

Estimated Bare Ground (%): 25-50%

Estimated Litter Depth (inches): None

Average Vegetation Height (inches): 6-12

Dominant Plant Species (Common Names): Yellow rocket, alfalfa

Invasive Plant Species (Common Names): Yellow rocket

Representative Photo(s):





Field Data Sheet





Field Data Sheet

Notes :

Do you need to report observations of another open field?

Yes



Field Data Sheet

Corresponding Point ID(s): 39

Anthropogenic Disturbance/Management Practices: Traffic Noise

Primary Open Field Cover Type: Field Cropland (including hay, wheat, oats, etc.)

Estimated Grass Cover (%): None

Estimated Forb Cover (%): 50-90%

Estimated Woody Vegetation Cover (%): 10-25%

Estimated Bare Ground (%): 1-10%

Estimated Litter Depth (inches): 0-1"

Average Vegetation Height (inches): 4-6

Dominant Plant Species (Common Names): Grass, clover

Invasive Plant Species (Common Names):

Representative Photo(s):





Field Data Sheet





Field Data Sheet

Notes :

Do you need to report observations of another open field?

Yes



Field Data Sheet

Corresponding Point ID(s): 38

Anthropogenic Disturbance/Management Practices: Traffic Noise

Primary Open Field Cover Type: Row Cropland (Active)

Estimated Grass Cover (%): None

Estimated Forb Cover (%): 25-50%

Estimated Woody Vegetation Cover (%): None

Estimated Bare Ground (%): 50-90%

Estimated Litter Depth (inches): None

Average Vegetation Height (inches): 4-6

Dominant Plant Species (Common Names): Corn, bladderwort

Invasive Plant Species (Common Names):

Representative Photo(s):





Field Data Sheet





Field Data Sheet

Notes :

Do you need to report observations of another open field?

Yes



Field Data Sheet

Corresponding Point ID(s): 36

Anthropogenic Disturbance/Management Practices: Traffic Noise

Primary Open Field Cover Type: Field Cropland (including hay, wheat, oats, etc.)

Estimated Grass Cover (%): 50-90%

Estimated Forb Cover (%): 1-10%

Estimated Woody Vegetation Cover (%): None

Estimated Bare Ground (%): 10-25%

Estimated Litter Depth (inches): 0-1"

Average Vegetation Height (inches): 4-6

Dominant Plant Species (Common Names): Grass, corn

Invasive Plant Species (Common Names):

Representative Photo(s):





Field Data Sheet





Field Data Sheet

Notes :

Do you need to report observations of another open field?

Yes



Field Data Sheet

Corresponding Point ID(s): 37

Anthropogenic Disturbance/Management Practices: Traffic Noise

Primary Open Field Cover Type: Row Cropland (Active)

Estimated Grass Cover (%): None

Estimated Forb Cover (%): 25-50%

Estimated Woody Vegetation Cover (%): None

Estimated Bare Ground (%): 10-25%

Estimated Litter Depth (inches): None

Average Vegetation Height (inches): 4-6

Dominant Plant Species (Common Names): Corn

Invasive Plant Species (Common Names):

Representative Photo(s):

Notes :

Do you need to report observations of another open field?

Yes



Field Data Sheet

Corresponding Point ID(s): 33

Anthropogenic Disturbance/Management Practices: None notable

Primary Open Field Cover Type: Field Cropland (including hay, wheat, oats, etc.)

Estimated Grass Cover (%): 50-90%

Estimated Forb Cover (%): 10-25%

Estimated Woody Vegetation Cover (%): None

Estimated Bare Ground (%): None

Estimated Litter Depth (inches): 0-1"

Average Vegetation Height (inches): 4-6

Dominant Plant Species (Common Names): Grass, clover

Invasive Plant Species (Common Names):

Representative Photo(s):





Field Data Sheet





Field Data Sheet

Notes :

Do you need to report observations of another open field?

Yes



Field Data Sheet

Corresponding Point ID(s): 32

Anthropogenic Disturbance/Management Practices: Traffic Noise

Primary Open Field Cover Type: Field Cropland (including hay, wheat, oats, etc.)

Estimated Grass Cover (%): 50-90%

Estimated Forb Cover (%): 1-10%

Estimated Woody Vegetation Cover (%): None

Estimated Bare Ground (%): None

Estimated Litter Depth (inches): 0-1"

Average Vegetation Height (inches): 12-18

Dominant Plant Species (Common Names): Grass, bedstraw, buttercup

Invasive Plant Species (Common Names):

Representative Photo(s):





Field Data Sheet





Field Data Sheet

Notes :

Do you need to report observations of another open field?

Yes



Field Data Sheet

Corresponding Point ID(s): 31

Anthropogenic Disturbance/Management Practices: None notable

Primary Open Field Cover Type: Field Cropland (including hay, wheat, oats, etc.)

Estimated Grass Cover (%): 50-90%

Estimated Forb Cover (%): 10-25%

Estimated Woody Vegetation Cover (%): None

Estimated Bare Ground (%): None

Estimated Litter Depth (inches): 0-1"

Average Vegetation Height (inches): 6-12

Dominant Plant Species (Common Names): Grass, clover, buttercup

Invasive Plant Species (Common Names):

Representative Photo(s):





Field Data Sheet





Field Data Sheet

Notes :

Do you need to report observations of another open field?

Yes



Field Data Sheet

Corresponding Point ID(s): 30

Anthropogenic Disturbance/Management Practices: Traffic Noise

Primary Open Field Cover Type: Field Cropland (including hay, wheat, oats, etc.)

Estimated Grass Cover (%): 25-50%

Estimated Forb Cover (%): 25-50%

Estimated Woody Vegetation Cover (%): None

Estimated Bare Ground (%): None

Estimated Litter Depth (inches): 0-1"

Average Vegetation Height (inches): 2-4

Dominant Plant Species (Common Names): Grass, clover

Invasive Plant Species (Common Names):

Representative Photo(s):





Field Data Sheet





Field Data Sheet

Notes :

Do you need to report observations of another open field?

Yes



Field Data Sheet

Corresponding Point ID(s): 33.1

Anthropogenic Disturbance/Management Practices: Traffic Noise

Primary Open Field Cover Type: Field Cropland (including hay, wheat, oats, etc.)

Estimated Grass Cover (%): 50-90%

Estimated Forb Cover (%): None

Estimated Woody Vegetation Cover (%): None

Estimated Bare Ground (%): 1-10%

Estimated Litter Depth (inches): 0-1"

Average Vegetation Height (inches): 12-18

Dominant Plant Species (Common Names): Grass, buttercup

Invasive Plant Species (Common Names):

Representative Photo(s):





Field Data Sheet





Field Data Sheet

Notes :

Do you need to report observations of another open field?

Yes



Field Data Sheet

Corresponding Point ID(s): 29

Anthropogenic Disturbance/Management Practices: Traffic Noise

Primary Open Field Cover Type: Field Cropland (including hay, wheat, oats, etc.)

Estimated Grass Cover (%): 50-90%

Estimated Forb Cover (%): 1-10%

Estimated Woody Vegetation Cover (%): None

Estimated Bare Ground (%): 25-50%

Estimated Litter Depth (inches): 0-1"

Average Vegetation Height (inches): 6-12

Dominant Plant Species (Common Names): Grass, bladderwort

Invasive Plant Species (Common Names):

Representative Photo(s):





Field Data Sheet





Field Data Sheet

Notes :

Do you need to report observations of another open field?

Yes



Field Data Sheet

Corresponding Point ID(s): 28

Anthropogenic Disturbance/Management Practices: Traffic Noise

Primary Open Field Cover Type: Row Cropland (Fallow)

Estimated Grass Cover (%): 25-50%

Estimated Forb Cover (%): 10-25%

Estimated Woody Vegetation Cover (%): None

Estimated Bare Ground (%): 25-50%

Estimated Litter Depth (inches): 0-1"

Average Vegetation Height (inches): 6-12

Dominant Plant Species (Common Names): Grass, yellow rocket

Invasive Plant Species (Common Names): Yellow rocket

Representative Photo(s):





Field Data Sheet





Field Data Sheet

Notes :

Do you need to report observations of another open field?

Yes



Field Data Sheet

Corresponding Point ID(s): 27

Anthropogenic Disturbance/Management Practices: Traffic Noise

Primary Open Field Cover Type: Row Cropland (Fallow)

Estimated Grass Cover (%): 25-50%

Estimated Forb Cover (%): 1-10%

Estimated Woody Vegetation Cover (%): None

Estimated Bare Ground (%): 25-50%

Estimated Litter Depth (inches): 0-1"

Average Vegetation Height (inches): 6-12

Dominant Plant Species (Common Names): Grass, yellow rocket

Invasive Plant Species (Common Names): Yellow rocket

Representative Photo(s):





Field Data Sheet





Field Data Sheet

Notes :

Do you need to report observations of another open field?

No



Field Data Sheet

Weather Conditions at End of Survey

Temperature (°F): 53

Wind Speed (mph): 1 – 3 (Light Air; Smoke drifts)

Wind Direction: NNW

Cloud Cover: Overcast (90-100%)

Visibility: Fair (0.62-10 miles; mist or light/moderate precipitation)

Precipitation: None (Clear)

Weather Notes: Wildfire smoke throughout survey, worst in the final hour

Were there any notable weather events/changes during the survey? Yes

Bird Observation Summary

Were any Endangered/Threatened Species observed?

No

Were any Species of Special Concern observed?

No

Were probable, possible, or confirmed breeding behaviors observed for any Listed Species (Endangered/Threatened/Special Concern)?

No

Were there additional photos documenting birds observed, habitat conditions, and/or other features of interest?

No

Additional Photo(s):

Were any alternate point count survey locations used due to access or visual constraints?

No

Alternate Point Count Survey Locations:



Field Data Sheet

**Incidental bird species observed outside of timed point count surveys
(Alpha Codes or Common Names):**

Overall Survey Notes:



Field Data Sheet

Breeding Bird Survey

Submitted By: fsimeone@edrdpc.com

Submitted Time: June 9, 2023 12:09 PM

Survey Information

Project Name: Hoffman Falls

Survey Date: June 9, 2023

Surveyor Name: Frank Simeone

Points Surveyed: 1-13, 21, 52, 53

Survey Start Time: 04:59

Survey End Time: 10:00

Weather Conditions at Start of Survey

Temperature (°F): 58

Wind Speed (mph): 0 – 1 (Calm; Smoke rises vertically)

Wind Direction: N

Cloud Cover: Mostly Cloudy (50% - 90%)

Visibility: Good (10+ miles; clear)

Precipitation: None (Clear)

Weather Notes:



Field Data Sheet

Open Field Condition Observations

Corresponding Point ID(s): 6

Anthropogenic Disturbance/Management Practices: None notable

Primary Open Field Cover Type: Field Cropland (including hay, wheat, oats, etc.)

Estimated Grass Cover (%): 50-90%

Estimated Forb Cover (%): 10-25%

Estimated Woody Vegetation Cover (%): None

Estimated Bare Ground (%): None

Estimated Litter Depth (inches): 0-1"

Average Vegetation Height (inches): 36-42

Dominant Plant Species (Common Names): Grass, clover, bedstraw

Invasive Plant Species (Common Names):

Representative Photo(s):





Field Data Sheet





Field Data Sheet

Notes :

Do you need to report observations of another open field?

Yes



Field Data Sheet

Corresponding Point ID(s): 4

Anthropogenic Disturbance/Management Practices: None notable

Primary Open Field Cover Type: Row Cropland (Active)

Estimated Grass Cover (%): 1-10%

Estimated Forb Cover (%): None

Estimated Woody Vegetation Cover (%): None

Estimated Bare Ground (%): 90-100%

Estimated Litter Depth (inches): 0-1"

Average Vegetation Height (inches): 0-2

Dominant Plant Species (Common Names): Corn

Invasive Plant Species (Common Names):

Representative Photo(s):





Field Data Sheet





Field Data Sheet

Notes :

Do you need to report observations of another open field?

Yes



Field Data Sheet

Corresponding Point ID(s): 3

Anthropogenic Disturbance/Management Practices: ATV/Other Vehicle Noise

Primary Open Field Cover Type: Row Cropland (Active)

Estimated Grass Cover (%): 1-10%

Estimated Forb Cover (%): None

Estimated Woody Vegetation Cover (%): None

Estimated Bare Ground (%): 90-100%

Estimated Litter Depth (inches): 0-1"

Average Vegetation Height (inches): 0-2

Dominant Plant Species (Common Names): Corn

Invasive Plant Species (Common Names):

Representative Photo(s):





Field Data Sheet





Field Data Sheet

Notes :

Do you need to report observations of another open field?

Yes



Field Data Sheet

Corresponding Point ID(s): 5

Anthropogenic Disturbance/Management Practices: ATV/Other Vehicle Noise

Primary Open Field Cover Type: Row Cropland (Active)

Estimated Grass Cover (%): None

Estimated Forb Cover (%): None

Estimated Woody Vegetation Cover (%): None

Estimated Bare Ground (%): 90-100%

Estimated Litter Depth (inches): 0-1"

Average Vegetation Height (inches): 0-2

Dominant Plant Species (Common Names): Corn

Invasive Plant Species (Common Names):

Representative Photo(s):





Field Data Sheet





Field Data Sheet

Notes :

Do you need to report observations of another open field?

Yes



Field Data Sheet

Corresponding Point ID(s): 10

Anthropogenic Disturbance/Management Practices: ATV/Other Vehicle Noise

Primary Open Field Cover Type: Row Cropland (Active)

Estimated Grass Cover (%): 1-10%

Estimated Forb Cover (%): None

Estimated Woody Vegetation Cover (%): None

Estimated Bare Ground (%): 90-100%

Estimated Litter Depth (inches): 0-1"

Average Vegetation Height (inches): 4-6

Dominant Plant Species (Common Names): Corn

Invasive Plant Species (Common Names):

Representative Photo(s):





Field Data Sheet





Field Data Sheet

Notes :

Do you need to report observations of another open field?

Yes



Field Data Sheet

Corresponding Point ID(s): 7.1

Anthropogenic Disturbance/Management Practices: ATV/Other Vehicle Noise

Primary Open Field Cover Type: Row Cropland (Active)

Estimated Grass Cover (%): 1-10%

Estimated Forb Cover (%): None

Estimated Woody Vegetation Cover (%): None

Estimated Bare Ground (%): 90-100%

Estimated Litter Depth (inches): 0-1"

Average Vegetation Height (inches): 4-6

Dominant Plant Species (Common Names): Corn

Invasive Plant Species (Common Names):

Representative Photo(s):





Field Data Sheet





Field Data Sheet

Notes :

Do you need to report observations of another open field?

Yes



Field Data Sheet

Corresponding Point ID(s): 7

Anthropogenic Disturbance/Management Practices: ATV/Other Vehicle Noise

Primary Open Field Cover Type: Row Cropland (Active)

Estimated Grass Cover (%): 1-10%

Estimated Forb Cover (%): None

Estimated Woody Vegetation Cover (%): None

Estimated Bare Ground (%): 90-100%

Estimated Litter Depth (inches): 0-1"

Average Vegetation Height (inches): 4-6

Dominant Plant Species (Common Names): Corn

Invasive Plant Species (Common Names):

Representative Photo(s):





Field Data Sheet





Field Data Sheet

Notes :

Do you need to report observations of another open field?

Yes



Field Data Sheet

Corresponding Point ID(s): 8

Anthropogenic Disturbance/Management Practices: ATV/Other Vehicle Noise

Primary Open Field Cover Type: Row Cropland (Active)

Estimated Grass Cover (%): 1-10%

Estimated Forb Cover (%): None

Estimated Woody Vegetation Cover (%): None

Estimated Bare Ground (%): 90-100%

Estimated Litter Depth (inches): 0-1"

Average Vegetation Height (inches): 4-6

Dominant Plant Species (Common Names): Corn

Invasive Plant Species (Common Names):

Representative Photo(s):





Field Data Sheet





Field Data Sheet

Notes :

Do you need to report observations of another open field?

Yes



Field Data Sheet

Corresponding Point ID(s): 9

Anthropogenic Disturbance/Management Practices: ATV/Other Vehicle Noise

Primary Open Field Cover Type: Row Cropland (Active)

Estimated Grass Cover (%): 1-10%

Estimated Forb Cover (%): None

Estimated Woody Vegetation Cover (%): None

Estimated Bare Ground (%): 90-100%

Estimated Litter Depth (inches): 0-1"

Average Vegetation Height (inches): 4-6

Dominant Plant Species (Common Names): Corn

Invasive Plant Species (Common Names):

Representative Photo(s):





Field Data Sheet





Field Data Sheet

Notes :

Do you need to report observations of another open field?

Yes



Field Data Sheet

Corresponding Point ID(s): 11

Anthropogenic Disturbance/Management Practices: ATV/Other Vehicle Noise

Primary Open Field Cover Type: Row Cropland (Active)

Estimated Grass Cover (%): 1-10%

Estimated Forb Cover (%): None

Estimated Woody Vegetation Cover (%): None

Estimated Bare Ground (%): 90-100%

Estimated Litter Depth (inches): 0-1"

Average Vegetation Height (inches): 4-6

Dominant Plant Species (Common Names): Corn

Invasive Plant Species (Common Names):

Representative Photo(s):





Field Data Sheet





Field Data Sheet

Notes :

Do you need to report observations of another open field?

Yes



Field Data Sheet

Corresponding Point ID(s): 1

Anthropogenic Disturbance/Management Practices: ATV/Other Vehicle Noise

Primary Open Field Cover Type: Row Cropland (Active)

Estimated Grass Cover (%): 1-10%

Estimated Forb Cover (%): None

Estimated Woody Vegetation Cover (%): None

Estimated Bare Ground (%): 90-100%

Estimated Litter Depth (inches): 0-1"

Average Vegetation Height (inches): 2-4

Dominant Plant Species (Common Names): Corn

Invasive Plant Species (Common Names):

Representative Photo(s):





Field Data Sheet





Field Data Sheet

Notes :

Do you need to report observations of another open field?

Yes



Field Data Sheet

Corresponding Point ID(s): 2

Anthropogenic Disturbance/Management Practices: ATV/Other Vehicle Noise

Primary Open Field Cover Type: Row Cropland (Active)

Estimated Grass Cover (%): 1-10%

Estimated Forb Cover (%): None

Estimated Woody Vegetation Cover (%): None

Estimated Bare Ground (%): 90-100%

Estimated Litter Depth (inches): 0-1"

Average Vegetation Height (inches): 2-4

Dominant Plant Species (Common Names): Corn

Invasive Plant Species (Common Names):

Representative Photo(s):





Field Data Sheet





Field Data Sheet

Notes :

Do you need to report observations of another open field?

Yes



Field Data Sheet

Corresponding Point ID(s): 12

Anthropogenic Disturbance/Management Practices: ATV/Other Vehicle Noise

Primary Open Field Cover Type: Field Cropland (including hay, wheat, oats, etc.)

Estimated Grass Cover (%): 50-90%

Estimated Forb Cover (%): 25-50%

Estimated Woody Vegetation Cover (%): None

Estimated Bare Ground (%): None

Estimated Litter Depth (inches): 0-1"

Average Vegetation Height (inches): 6-12

Dominant Plant Species (Common Names): Grass, red clover, bedstraw,

Invasive Plant Species (Common Names):

Representative Photo(s):





Field Data Sheet





Field Data Sheet

Notes :

Do you need to report observations of another open field?

Yes



Field Data Sheet

Corresponding Point ID(s): 13

Anthropogenic Disturbance/Management Practices: ATV/Other Vehicle Noise

Primary Open Field Cover Type: Row Cropland (Active)

Estimated Grass Cover (%): 1-10%

Estimated Forb Cover (%): 1-10%

Estimated Woody Vegetation Cover (%): None

Estimated Bare Ground (%): 90-100%

Estimated Litter Depth (inches): 0-1"

Average Vegetation Height (inches): 2-4

Dominant Plant Species (Common Names): Corn, milkweed

Invasive Plant Species (Common Names):

Representative Photo(s):





Field Data Sheet





Field Data Sheet

Notes :

Do you need to report observations of another open field?

Yes



Field Data Sheet

Corresponding Point ID(s): 21

Anthropogenic Disturbance/Management Practices: None notable

Primary Open Field Cover Type: Row Cropland (Active)

Estimated Grass Cover (%): 1-10%

Estimated Forb Cover (%): 1-10%

Estimated Woody Vegetation Cover (%): None

Estimated Bare Ground (%): 50-90%

Estimated Litter Depth (inches): None

Average Vegetation Height (inches): 2-4

Dominant Plant Species (Common Names): Grass, clover, dandelion, goldenrod, vetch, birdsfoot trefoil, bedstraw,

Invasive Plant Species (Common Names):

Representative Photo(s):





Field Data Sheet





Field Data Sheet

Notes :

Do you need to report observations of another open field?

Yes



Field Data Sheet

Corresponding Point ID(s): 53

Anthropogenic Disturbance/Management Practices: None notable

Primary Open Field Cover Type: Row Cropland (Active)

Estimated Grass Cover (%): 1-10%

Estimated Forb Cover (%): 1-10%

Estimated Woody Vegetation Cover (%): 1-10%

Estimated Bare Ground (%): 50-90%

Estimated Litter Depth (inches): 0-1"

Average Vegetation Height (inches): 2-4

Dominant Plant Species (Common Names): Soybean, grass, clover, bedstraw, goldenrod,

Invasive Plant Species (Common Names): Honeysuckle

Representative Photo(s):





Field Data Sheet





Field Data Sheet

Notes :

Do you need to report observations of another open field?

Yes



Field Data Sheet

Corresponding Point ID(s): 52

Anthropogenic Disturbance/Management Practices: None notable

Primary Open Field Cover Type: Row Cropland (Active)

Estimated Grass Cover (%): 1-10%

Estimated Forb Cover (%): 1-10%

Estimated Woody Vegetation Cover (%): None

Estimated Bare Ground (%): 50-90%

Estimated Litter Depth (inches): 0-1"

Average Vegetation Height (inches): 2-4

Dominant Plant Species (Common Names): Soybean, grass, clover

Invasive Plant Species (Common Names):

Representative Photo(s):





Field Data Sheet





Field Data Sheet

Notes :

Do you need to report observations of another open field?

No

This figure has been redacted from this publicly available document because it contains protected/confidential information regarding the proposed facility location and/or the detailed locations of NYS threatened or endangered species.



Field Data Sheet

Incidental bird species observed outside of timed point count surveys

(Alpha Codes or Common Names):

NOFL, BWWA, HOSP, BEKI, PIWA,

Overall Survey Notes:



Field Data Sheet

Breeding Bird Survey

Submitted By: bsmith@edrdpc.com

Submitted Time: June 13, 2023 9:50 AM

Survey Information

Project Name: Hoffman Falls

Survey Date: June 13, 2023

Surveyor Name: Brooke Smith

Points Surveyed: 36-49

Survey Start Time: 05:15

Survey End Time: 09:30

Weather Conditions at Start of Survey

Temperature (°F): 54

Wind Speed (mph): 8 – 12 (Gentle Breeze; Leaves and Small twigs in constant motion)

Wind Direction: W

Cloud Cover: Overcast (90-100%)

Visibility: Good (10+ miles; clear)

Precipitation: None (Clear)

Weather Notes:



Field Data Sheet

Open Field Condition Observations

Corresponding Point ID(s): 47

Anthropogenic Disturbance/Management Practices: None notable

Primary Open Field Cover Type: Pastureland

Estimated Grass Cover (%): 90-100%

Estimated Forb Cover (%): None

Estimated Woody Vegetation Cover (%): None

Estimated Bare Ground (%): None

Estimated Litter Depth (inches): None

Average Vegetation Height (inches): 36-42

Dominant Plant Species (Common Names): Grass

Invasive Plant Species (Common Names):

Representative Photo(s):





Field Data Sheet





Field Data Sheet

Notes :

Do you need to report observations of another open field?

Yes



Field Data Sheet

Corresponding Point ID(s): 48

Anthropogenic Disturbance/Management Practices: None notable

Primary Open Field Cover Type: Row Cropland (Active)

Estimated Grass Cover (%): None

Estimated Forb Cover (%): 10-25%

Estimated Woody Vegetation Cover (%): None

Estimated Bare Ground (%): 50-90%

Estimated Litter Depth (inches): None

Average Vegetation Height (inches): 2-4

Dominant Plant Species (Common Names): Corn

Invasive Plant Species (Common Names):

Representative Photo(s):





Field Data Sheet





Field Data Sheet

Notes :

Do you need to report observations of another open field?

Yes



Field Data Sheet

Corresponding Point ID(s): 45

Anthropogenic Disturbance/Management Practices: None notable

Primary Open Field Cover Type: Row Cropland (Fallow)

Estimated Grass Cover (%): 1-10%

Estimated Forb Cover (%): 25-50%

Estimated Woody Vegetation Cover (%): None

Estimated Bare Ground (%): 25-50%

Estimated Litter Depth (inches): 0-1"

Average Vegetation Height (inches): 4-6

Dominant Plant Species (Common Names): Alfalfa, grass

Invasive Plant Species (Common Names):

Representative Photo(s):





Field Data Sheet





Field Data Sheet

Notes :

Do you need to report observations of another open field?

Yes



Field Data Sheet

Corresponding Point ID(s): 44

Anthropogenic Disturbance/Management Practices: None notable

Primary Open Field Cover Type: Field Cropland (including hay, wheat, oats, etc.)

Estimated Grass Cover (%): 90-100%

Estimated Forb Cover (%): None

Estimated Woody Vegetation Cover (%): None

Estimated Bare Ground (%): None

Estimated Litter Depth (inches): None

Average Vegetation Height (inches): 4-6

Dominant Plant Species (Common Names): Grass

Invasive Plant Species (Common Names):

Representative Photo(s):





Field Data Sheet





Field Data Sheet

Notes :

Do you need to report observations of another open field?

Yes



Field Data Sheet

Corresponding Point ID(s): 43

Anthropogenic Disturbance/Management Practices: None notable

Primary Open Field Cover Type: Field Cropland (including hay, wheat, oats, etc.)

Estimated Grass Cover (%): 90-100%

Estimated Forb Cover (%): None

Estimated Woody Vegetation Cover (%): None

Estimated Bare Ground (%): None

Estimated Litter Depth (inches): None

Average Vegetation Height (inches): 4-6

Dominant Plant Species (Common Names): Grass

Invasive Plant Species (Common Names):

Representative Photo(s):





Field Data Sheet





Field Data Sheet

Notes :

Do you need to report observations of another open field?

Yes



Field Data Sheet

Corresponding Point ID(s): 42

Anthropogenic Disturbance/Management Practices: None notable

Primary Open Field Cover Type: Field Cropland (including hay, wheat, oats, etc.)

Estimated Grass Cover (%): 90-100%

Estimated Forb Cover (%): None

Estimated Woody Vegetation Cover (%): None

Estimated Bare Ground (%): None

Estimated Litter Depth (inches): None

Average Vegetation Height (inches): 4-6

Dominant Plant Species (Common Names): Grass

Invasive Plant Species (Common Names):

Representative Photo(s):





Field Data Sheet





Field Data Sheet

Notes :

Do you need to report observations of another open field?

Yes



Field Data Sheet

Corresponding Point ID(s): 46

Anthropogenic Disturbance/Management Practices: None notable

Primary Open Field Cover Type: Field Cropland (including hay, wheat, oats, etc.)

Estimated Grass Cover (%): 90-100%

Estimated Forb Cover (%): None

Estimated Woody Vegetation Cover (%): None

Estimated Bare Ground (%): None

Estimated Litter Depth (inches): None

Average Vegetation Height (inches): 4-6

Dominant Plant Species (Common Names): Grass

Invasive Plant Species (Common Names):

Representative Photo(s):





Field Data Sheet





Field Data Sheet

Notes :

Do you need to report observations of another open field?

Yes



Field Data Sheet

Corresponding Point ID(s): 49

Anthropogenic Disturbance/Management Practices: None notable

Primary Open Field Cover Type: Row Cropland (Active)

Estimated Grass Cover (%): None

Estimated Forb Cover (%): 10-25%

Estimated Woody Vegetation Cover (%): None

Estimated Bare Ground (%): 50-90%

Estimated Litter Depth (inches): None

Average Vegetation Height (inches): 2-4

Dominant Plant Species (Common Names): Corn.

Invasive Plant Species (Common Names):

Representative Photo(s):





Field Data Sheet





Field Data Sheet

Notes :

Do you need to report observations of another open field?

Yes



Field Data Sheet

Corresponding Point ID(s): 40

Anthropogenic Disturbance/Management Practices: None notable

Primary Open Field Cover Type: Row Cropland (Fallow)

Estimated Grass Cover (%): None

Estimated Forb Cover (%): 90-100%

Estimated Woody Vegetation Cover (%): None

Estimated Bare Ground (%): 1-10%

Estimated Litter Depth (inches): None

Average Vegetation Height (inches): 12-18

Dominant Plant Species (Common Names): Wild mustard

Invasive Plant Species (Common Names):

Representative Photo(s):





Field Data Sheet





Field Data Sheet

Notes :

Do you need to report observations of another open field?

Yes



Field Data Sheet

Corresponding Point ID(s): 41

Anthropogenic Disturbance/Management Practices: None notable

Primary Open Field Cover Type: Row Cropland (Fallow)

Estimated Grass Cover (%): 50-90%

Estimated Forb Cover (%): 25-50%

Estimated Woody Vegetation Cover (%): None

Estimated Bare Ground (%): None

Estimated Litter Depth (inches): 0-1"

Average Vegetation Height (inches): 6-12

Dominant Plant Species (Common Names): Grass

Invasive Plant Species (Common Names):

Representative Photo(s):





Field Data Sheet





Field Data Sheet

Notes :

Do you need to report observations of another open field?

Yes



Field Data Sheet

Corresponding Point ID(s): 39

Anthropogenic Disturbance/Management Practices: None notable

Primary Open Field Cover Type: Field Cropland (including hay, wheat, oats, etc.)

Estimated Grass Cover (%): 90-100%

Estimated Forb Cover (%): None

Estimated Woody Vegetation Cover (%): None

Estimated Bare Ground (%): None

Estimated Litter Depth (inches): None

Average Vegetation Height (inches): 2-4

Dominant Plant Species (Common Names): Grass

Invasive Plant Species (Common Names):

Representative Photo(s):





Field Data Sheet





Field Data Sheet

Notes :

Do you need to report observations of another open field?

Yes



Field Data Sheet

Corresponding Point ID(s): 38

Anthropogenic Disturbance/Management Practices: None notable

Primary Open Field Cover Type: Row Cropland (Active)

Estimated Grass Cover (%): None

Estimated Forb Cover (%): 10-25%

Estimated Woody Vegetation Cover (%): None

Estimated Bare Ground (%): 50-90%

Estimated Litter Depth (inches): None

Average Vegetation Height (inches): 2-4

Dominant Plant Species (Common Names): Corn

Invasive Plant Species (Common Names):

Representative Photo(s):





Field Data Sheet





Field Data Sheet

Notes :

Do you need to report observations of another open field?

Yes



Field Data Sheet

Corresponding Point ID(s): 37

Anthropogenic Disturbance/Management Practices: None notable

Primary Open Field Cover Type: Row Cropland (Active)

Estimated Grass Cover (%): None

Estimated Forb Cover (%): 10-25%

Estimated Woody Vegetation Cover (%): None

Estimated Bare Ground (%): 50-90%

Estimated Litter Depth (inches): None

Average Vegetation Height (inches): 4-6

Dominant Plant Species (Common Names): Corn

Invasive Plant Species (Common Names):

Representative Photo(s):





Field Data Sheet





Field Data Sheet

Notes :

Do you need to report observations of another open field?

No



Field Data Sheet

Weather Conditions at End of Survey

Temperature (°F): 58

Wind Speed (mph): 8 – 12 (Gentle Breeze; Leaves and Small twigs in constant motion)

Wind Direction: WNW

Cloud Cover: Overcast (90-100%)

Visibility: Good (10+ miles; clear)

Precipitation: None (Clear)

Weather Notes:

Were there any notable weather events/changes during the survey? No

Bird Observation Summary

Were any Endangered/Threatened Species observed?

No

Were any Species of Special Concern observed?

No

Were probable, possible, or confirmed breeding behaviors observed for any Listed Species (Endangered/Threatened/Special Concern)?

No

Were there additional photos documenting birds observed, habitat conditions, and/or other features of interest?

No

Additional Photo(s):

Were any alternate point count survey locations used due to access or visual constraints?

No



Field Data Sheet

Alternate Point Count Survey Locations:

Incidental bird species observed outside of timed point count surveys (Alpha Codes or Common Names):

Overall Survey Notes:



Field Data Sheet

Breeding Bird Survey

Submitted By: abutler@edrdpc.com

Submitted Time: June 13, 2023 2:51 PM

Survey Information

Project Name: Hoffman Falls

Survey Date: June 13, 2023

Surveyor Name: Anna Butler

Points Surveyed: 65-76, 76.1, 77-80

Survey Start Time: 05:19

Survey End Time: 10:26

Weather Conditions at Start of Survey

Temperature (°F): 55

Wind Speed (mph): 1 – 3 (Light Air; Smoke drifts)

Wind Direction: NW

Cloud Cover: Overcast (90-100%)

Visibility: Good (10+ miles; clear)

Precipitation: None (Clear)

Weather Notes:



Field Data Sheet

Open Field Condition Observations

Corresponding Point ID(s): 77

Anthropogenic Disturbance/Management Practices: Traffic Noise

Primary Open Field Cover Type: Field Cropland (including hay, wheat, oats, etc.)

Estimated Grass Cover (%): 25-50%

Estimated Forb Cover (%): 25-50%

Estimated Woody Vegetation Cover (%): None

Estimated Bare Ground (%): None

Estimated Litter Depth (inches): 0-1"

Average Vegetation Height (inches): 6-12

Dominant Plant Species (Common Names): Alfalfa, grass

Invasive Plant Species (Common Names):

Representative Photo(s):





Field Data Sheet





Field Data Sheet

Notes :

Do you need to report observations of another open field?

Yes



Field Data Sheet

Corresponding Point ID(s): 79

Anthropogenic Disturbance/Management Practices: Traffic Noise

Primary Open Field Cover Type: Row Cropland (Active)

Estimated Grass Cover (%): 1-10%

Estimated Forb Cover (%): 10-25%

Estimated Woody Vegetation Cover (%): None

Estimated Bare Ground (%): 50-90%

Estimated Litter Depth (inches): None

Average Vegetation Height (inches): 6-12

Dominant Plant Species (Common Names): Grass, corn

Invasive Plant Species (Common Names):

Representative Photo(s):





Field Data Sheet





Field Data Sheet

Notes :

Do you need to report observations of another open field?

Yes



Field Data Sheet

Corresponding Point ID(s): 80

Anthropogenic Disturbance/Management Practices: Traffic Noise

Primary Open Field Cover Type: Field Cropland (including hay, wheat, oats, etc.)

Estimated Grass Cover (%): 10-25%

Estimated Forb Cover (%): 25-50%

Estimated Woody Vegetation Cover (%): None

Estimated Bare Ground (%): 1-10%

Estimated Litter Depth (inches): 0-1"

Average Vegetation Height (inches): 6-12

Dominant Plant Species (Common Names): Clover, dandelion, grass

Invasive Plant Species (Common Names):

Representative Photo(s):





Field Data Sheet





Field Data Sheet

Notes :

Do you need to report observations of another open field?

Yes



Field Data Sheet

Corresponding Point ID(s): 78

Anthropogenic Disturbance/Management Practices: Traffic Noise

Primary Open Field Cover Type: Field Cropland (including hay, wheat, oats, etc.)

Estimated Grass Cover (%): 10-25%

Estimated Forb Cover (%): 25-50%

Estimated Woody Vegetation Cover (%): None

Estimated Bare Ground (%): 1-10%

Estimated Litter Depth (inches): 0-1"

Average Vegetation Height (inches): 6-12

Dominant Plant Species (Common Names): Alfalfa, grass, dandelion

Invasive Plant Species (Common Names):

Representative Photo(s):





Field Data Sheet





Field Data Sheet

Notes :

Do you need to report observations of another open field?

Yes



Field Data Sheet

Corresponding Point ID(s): 75

Anthropogenic Disturbance/Management Practices: Traffic Noise

Primary Open Field Cover Type: Field Cropland (including hay, wheat, oats, etc.)

Estimated Grass Cover (%): None

Estimated Forb Cover (%): 50-90%

Estimated Woody Vegetation Cover (%): None

Estimated Bare Ground (%): 1-10%

Estimated Litter Depth (inches): None

Average Vegetation Height (inches): 6-12

Dominant Plant Species (Common Names): Alfalfa

Invasive Plant Species (Common Names):

Representative Photo(s):





Field Data Sheet





Field Data Sheet

Notes :

Do you need to report observations of another open field?

Yes



Field Data Sheet

Corresponding Point ID(s): 73

Anthropogenic Disturbance/Management Practices: Traffic Noise

Primary Open Field Cover Type: Row Cropland (Fallow)

Estimated Grass Cover (%): 25-50%

Estimated Forb Cover (%): 10-25%

Estimated Woody Vegetation Cover (%): None

Estimated Bare Ground (%): 10-25%

Estimated Litter Depth (inches): None

Average Vegetation Height (inches): 12-18

Dominant Plant Species (Common Names): Grass, alfalfa

Invasive Plant Species (Common Names):

Representative Photo(s):





Field Data Sheet





Field Data Sheet

Notes :

Do you need to report observations of another open field?

Yes



Field Data Sheet

Corresponding Point ID(s): 72

Anthropogenic Disturbance/Management Practices: Traffic Noise

Primary Open Field Cover Type: Row Cropland (Fallow)

Estimated Grass Cover (%): 25-50%

Estimated Forb Cover (%): 10-25%

Estimated Woody Vegetation Cover (%): None

Estimated Bare Ground (%): 10-25%

Estimated Litter Depth (inches): None

Average Vegetation Height (inches): 12-18

Dominant Plant Species (Common Names): Grass, alfalfa

Invasive Plant Species (Common Names): Yellow rocket

Representative Photo(s):





Field Data Sheet





Field Data Sheet

Notes :

Do you need to report observations of another open field?

Yes



Field Data Sheet

Corresponding Point ID(s): 74

Anthropogenic Disturbance/Management Practices: Farm Equipment Noise

Primary Open Field Cover Type: Field Cropland (including hay, wheat, oats, etc.)

Estimated Grass Cover (%): None

Estimated Forb Cover (%): 90-100%

Estimated Woody Vegetation Cover (%): None

Estimated Bare Ground (%): 1-10%

Estimated Litter Depth (inches): None

Average Vegetation Height (inches): 6-12

Dominant Plant Species (Common Names): Alfalfa

Invasive Plant Species (Common Names):

Representative Photo(s):





Field Data Sheet





Field Data Sheet

Notes :

Do you need to report observations of another open field?

Yes



Field Data Sheet

Corresponding Point ID(s): 76

Anthropogenic Disturbance/Management Practices: Farm Equipment Noise

Primary Open Field Cover Type: Field Cropland (including hay, wheat, oats, etc.)

Estimated Grass Cover (%): 10-25%

Estimated Forb Cover (%): 50-90%

Estimated Woody Vegetation Cover (%): None

Estimated Bare Ground (%): 1-10%

Estimated Litter Depth (inches): 0-1"

Average Vegetation Height (inches): 4-6

Dominant Plant Species (Common Names): Alfalfa, dandelion

Invasive Plant Species (Common Names):

Representative Photo(s):





Field Data Sheet





Field Data Sheet

Notes :

Do you need to report observations of another open field?

Yes



Field Data Sheet

Corresponding Point ID(s): 76.1

Anthropogenic Disturbance/Management Practices: Traffic Noise

Primary Open Field Cover Type: Successional Old Field

Estimated Grass Cover (%): 10-25%

Estimated Forb Cover (%): 25-50%

Estimated Woody Vegetation Cover (%): 1-10%

Estimated Bare Ground (%): None

Estimated Litter Depth (inches): 1-3"

Average Vegetation Height (inches): 24-30

Dominant Plant Species (Common Names): Grass, goldenrod, cow vetch

Invasive Plant Species (Common Names): Honeysuckle

Representative Photo(s):





Field Data Sheet





Field Data Sheet

Notes :

Do you need to report observations of another open field?

Yes



Field Data Sheet

Corresponding Point ID(s): 71

Anthropogenic Disturbance/Management Practices: Traffic Noise

Primary Open Field Cover Type: Field Cropland (including hay, wheat, oats, etc.)

Estimated Grass Cover (%): 25-50%

Estimated Forb Cover (%): 25-50%

Estimated Woody Vegetation Cover (%): None

Estimated Bare Ground (%): 1-10%

Estimated Litter Depth (inches): 0-1"

Average Vegetation Height (inches): 6-12

Dominant Plant Species (Common Names): Alfalfa, grass, dandelion

Invasive Plant Species (Common Names):

Representative Photo(s):





Field Data Sheet





Field Data Sheet

Notes :

Do you need to report observations of another open field?

Yes



Field Data Sheet

Corresponding Point ID(s): 70

Anthropogenic Disturbance/Management Practices: Traffic Noise

Primary Open Field Cover Type: Row Cropland (Active)

Estimated Grass Cover (%): None

Estimated Forb Cover (%): 10-25%

Estimated Woody Vegetation Cover (%): None

Estimated Bare Ground (%): 50-90%

Estimated Litter Depth (inches): None

Average Vegetation Height (inches): 6-12

Dominant Plant Species (Common Names): Corn

Invasive Plant Species (Common Names):

Representative Photo(s):





Field Data Sheet





Field Data Sheet

Notes :

Do you need to report observations of another open field?

Yes



Field Data Sheet

Corresponding Point ID(s): 69

Anthropogenic Disturbance/Management Practices: Traffic Noise

Primary Open Field Cover Type: Field Cropland (including hay, wheat, oats, etc.)

Estimated Grass Cover (%): 50-90%

Estimated Forb Cover (%): 10-25%

Estimated Woody Vegetation Cover (%): None

Estimated Bare Ground (%): None

Estimated Litter Depth (inches): 0-1"

Average Vegetation Height (inches): 4-6

Dominant Plant Species (Common Names): Grass, dandelion

Invasive Plant Species (Common Names):

Representative Photo(s):





Field Data Sheet





Field Data Sheet

Notes :

Do you need to report observations of another open field?

Yes



Field Data Sheet

Corresponding Point ID(s): 66

Anthropogenic Disturbance/Management Practices: Traffic Noise

Primary Open Field Cover Type: Field Cropland (including hay, wheat, oats, etc.)

Estimated Grass Cover (%): 25-50%

Estimated Forb Cover (%): 25-50%

Estimated Woody Vegetation Cover (%): None

Estimated Bare Ground (%): 1-10%

Estimated Litter Depth (inches): 0-1"

Average Vegetation Height (inches): 6-12

Dominant Plant Species (Common Names): Grass, clover, buttercup

Invasive Plant Species (Common Names):

Representative Photo(s):





Field Data Sheet





Field Data Sheet

Notes :

Do you need to report observations of another open field?

Yes



Field Data Sheet

Corresponding Point ID(s): 67

Anthropogenic Disturbance/Management Practices: Traffic Noise

Primary Open Field Cover Type: Row Cropland (Active)

Estimated Grass Cover (%): None

Estimated Forb Cover (%): 25-50%

Estimated Woody Vegetation Cover (%): None

Estimated Bare Ground (%): 50-90%

Estimated Litter Depth (inches): None

Average Vegetation Height (inches): 2-4

Dominant Plant Species (Common Names): Soy

Invasive Plant Species (Common Names):

Representative Photo(s):





Field Data Sheet





Field Data Sheet

Notes :

Do you need to report observations of another open field?

Yes



Field Data Sheet

Corresponding Point ID(s): 68

Anthropogenic Disturbance/Management Practices: Traffic Noise

Primary Open Field Cover Type: Row Cropland (Active)

Estimated Grass Cover (%): None

Estimated Forb Cover (%): 25-50%

Estimated Woody Vegetation Cover (%): None

Estimated Bare Ground (%): 25-50%

Estimated Litter Depth (inches): None

Average Vegetation Height (inches): 4-6

Dominant Plant Species (Common Names): Soy

Invasive Plant Species (Common Names):

Representative Photo(s):





Field Data Sheet





Field Data Sheet

Notes :

Do you need to report observations of another open field?

Yes



Field Data Sheet

Corresponding Point ID(s): 65

Anthropogenic Disturbance/Management Practices: Traffic Noise

Primary Open Field Cover Type: Row Cropland (Active)

Estimated Grass Cover (%): 10-25%

Estimated Forb Cover (%): 25-50%

Estimated Woody Vegetation Cover (%): None

Estimated Bare Ground (%): 25-50%

Estimated Litter Depth (inches): None

Average Vegetation Height (inches): 4-6

Dominant Plant Species (Common Names): Grass, soy

Invasive Plant Species (Common Names):

Representative Photo(s):





Field Data Sheet





Field Data Sheet

Notes :

Do you need to report observations of another open field?

No



Field Data Sheet

Weather Conditions at End of Survey

Temperature (°F): 62

Wind Speed (mph): 4 – 7 (Light Breeze; Leaves rustle)

Wind Direction: NW

Cloud Cover: Mostly Cloudy (50% - 90%)

Visibility: Good (10+ miles; clear)

Precipitation: None (Clear)

Weather Notes:

Were there any notable weather events/changes during the survey? No

Bird Observation Summary

Were any Endangered/Threatened Species observed?

No

Were any Species of Special Concern observed?

No

Were probable, possible, or confirmed breeding behaviors observed for any Listed Species (Endangered/Threatened/Special Concern)?

No

Were there additional photos documenting birds observed, habitat conditions, and/or other features of interest?

No

Additional Photo(s):

Were any alternate point count survey locations used due to access or visual constraints?

No

Alternate Point Count Survey Locations:



Field Data Sheet

**Incidental bird species observed outside of timed point count surveys
(Alpha Codes or Common Names):**

Overall Survey Notes:



Field Data Sheet

Breeding Bird Survey

Submitted By: fsimeone@edrdpc.com

Submitted Time: June 14, 2023 7:11 PM

Survey Information

Project Name: Hoffman Falls

Survey Date: June 14, 2023

Surveyor Name: Frank Simeone

Points Surveyed: 1-17

Survey Start Time: 05:06

Survey End Time: 10:01

Weather Conditions at Start of Survey

Temperature (°F): 53

Wind Speed (mph): 1 – 3 (Light Air; Smoke drifts)

Wind Direction: W

Cloud Cover: Overcast (90-100%)

Visibility: Fair (0.62-10 miles; mist or light/moderate precipitation)

Precipitation: Rain (Intermittent/Light)

Weather Notes: Light rain/drizzle



Field Data Sheet

Open Field Condition Observations

Corresponding Point ID(s): 16.2

Anthropogenic Disturbance/Management Practices: None notable

Primary Open Field Cover Type: Row Cropland (Active)

Estimated Grass Cover (%): 10-25%

Estimated Forb Cover (%): None

Estimated Woody Vegetation Cover (%): None

Estimated Bare Ground (%): 50-90%

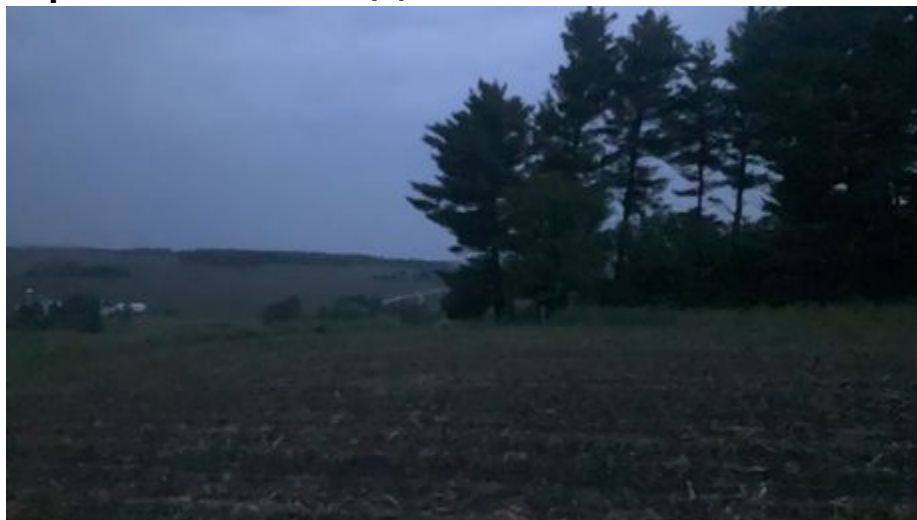
Estimated Litter Depth (inches): 0-1"

Average Vegetation Height (inches): 4-6

Dominant Plant Species (Common Names): Corn

Invasive Plant Species (Common Names):

Representative Photo(s):





Field Data Sheet





Field Data Sheet

Notes :

Do you need to report observations of another open field?

Yes



Field Data Sheet

Corresponding Point ID(s): 17

Anthropogenic Disturbance/Management Practices: ATV/Other Vehicle Noise

Primary Open Field Cover Type: Row Cropland (Active)

Estimated Grass Cover (%): 10-25%

Estimated Forb Cover (%): None

Estimated Woody Vegetation Cover (%): None

Estimated Bare Ground (%): 50-90%

Estimated Litter Depth (inches): 0-1"

Average Vegetation Height (inches): 4-6

Dominant Plant Species (Common Names): Corn

Invasive Plant Species (Common Names):

Representative Photo(s):





Field Data Sheet





Field Data Sheet

Notes :

Do you need to report observations of another open field?

Yes



Field Data Sheet

Corresponding Point ID(s): 16

Anthropogenic Disturbance/Management Practices: ATV/Other Vehicle Noise

Primary Open Field Cover Type: Row Cropland (Active)

Estimated Grass Cover (%): 10-25%

Estimated Forb Cover (%): None

Estimated Woody Vegetation Cover (%): None

Estimated Bare Ground (%): 50-90%

Estimated Litter Depth (inches): 0-1"

Average Vegetation Height (inches): 4-6

Dominant Plant Species (Common Names): Corn

Invasive Plant Species (Common Names):

Representative Photo(s):





Field Data Sheet





Field Data Sheet

Notes :

Do you need to report observations of another open field?

Yes



Field Data Sheet

Corresponding Point ID(s): 16.1

Anthropogenic Disturbance/Management Practices: ATV/Other Vehicle Noise

Primary Open Field Cover Type: Pastureland

Estimated Grass Cover (%): 50-90%

Estimated Forb Cover (%): 10-25%

Estimated Woody Vegetation Cover (%): 1-10%

Estimated Bare Ground (%): None

Estimated Litter Depth (inches): 0-1"

Average Vegetation Height (inches): 30-36

Dominant Plant Species (Common Names): Grass, clover, dandelion, bedstraw, goldenrod, buttercup, fleabane,

Invasive Plant Species (Common Names): Mugwort

Representative Photo(s):





Field Data Sheet





Field Data Sheet

Notes :

Do you need to report observations of another open field?

Yes



Field Data Sheet

Corresponding Point ID(s): 15.1

Anthropogenic Disturbance/Management Practices: ATV/Other Vehicle Noise

Primary Open Field Cover Type: Row Cropland (Active)

Estimated Grass Cover (%): 25-50%

Estimated Forb Cover (%): 10-25%

Estimated Woody Vegetation Cover (%): 1-10%

Estimated Bare Ground (%): 25-50%

Estimated Litter Depth (inches): 0-1"

Average Vegetation Height (inches): 6-12

Dominant Plant Species (Common Names): Grass, dandelion, clover, bedstraw, honeysuckle, goldenrod, thistle, buttercup,

Invasive Plant Species (Common Names): Multiflora rose

Representative Photo(s):





Field Data Sheet





Field Data Sheet

Notes :

Alternate point used

Do you need to report observations of another open field?

Yes



Field Data Sheet

Corresponding Point ID(s): 14

Anthropogenic Disturbance/Management Practices: ATV/Other Vehicle Noise

Primary Open Field Cover Type: Row Cropland (Active)

Estimated Grass Cover (%): 1-10%

Estimated Forb Cover (%): None

Estimated Woody Vegetation Cover (%): None

Estimated Bare Ground (%): 90-100%

Estimated Litter Depth (inches): 0-1"

Average Vegetation Height (inches): 2-4

Dominant Plant Species (Common Names): Corn, grass

Invasive Plant Species (Common Names):

Representative Photo(s):





Field Data Sheet





Field Data Sheet

Notes :

Do you need to report observations of another open field?

Yes



Field Data Sheet

Corresponding Point ID(s): 13

Anthropogenic Disturbance/Management Practices: ATV/Other Vehicle Noise

Primary Open Field Cover Type: Row Cropland (Active)

Estimated Grass Cover (%): 10-25%

Estimated Forb Cover (%): None

Estimated Woody Vegetation Cover (%): None

Estimated Bare Ground (%): 50-90%

Estimated Litter Depth (inches): None

Average Vegetation Height (inches): 4-6

Dominant Plant Species (Common Names): Corn

Invasive Plant Species (Common Names):

Representative Photo(s):





Field Data Sheet





Field Data Sheet

Notes :

Do you need to report observations of another open field?

Yes



Field Data Sheet

Corresponding Point ID(s): 12

Anthropogenic Disturbance/Management Practices: ATV/Other Vehicle Noise

Primary Open Field Cover Type: Field Cropland (including hay, wheat, oats, etc.)

Estimated Grass Cover (%): 25-50%

Estimated Forb Cover (%): 25-50%

Estimated Woody Vegetation Cover (%): None

Estimated Bare Ground (%): None

Estimated Litter Depth (inches): 0-1"

Average Vegetation Height (inches): 4-6

Dominant Plant Species (Common Names): Grass, clover, white campion,

Invasive Plant Species (Common Names):

Representative Photo(s):





Field Data Sheet





Field Data Sheet

Notes :

Do you need to report observations of another open field?

Yes



Field Data Sheet

Corresponding Point ID(s): 11

Anthropogenic Disturbance/Management Practices: ATV/Other Vehicle Noise

Primary Open Field Cover Type: Row Cropland (Active)

Estimated Grass Cover (%): 10-25%

Estimated Forb Cover (%): None

Estimated Woody Vegetation Cover (%): None

Estimated Bare Ground (%): 50-90%

Estimated Litter Depth (inches): 0-1"

Average Vegetation Height (inches): 4-6

Dominant Plant Species (Common Names): Corn, grass

Invasive Plant Species (Common Names):

Representative Photo(s):





Field Data Sheet





Field Data Sheet

Notes :

Do you need to report observations of another open field?

Yes



Field Data Sheet

Corresponding Point ID(s): 1

Anthropogenic Disturbance/Management Practices: None notable

Primary Open Field Cover Type: Row Cropland (Active)

Estimated Grass Cover (%): 1-10%

Estimated Forb Cover (%): None

Estimated Woody Vegetation Cover (%): None

Estimated Bare Ground (%): 90-100%

Estimated Litter Depth (inches): 0-1"

Average Vegetation Height (inches): 2-4

Dominant Plant Species (Common Names): Corn

Invasive Plant Species (Common Names):

Representative Photo(s):





Field Data Sheet





Field Data Sheet

Notes :

Do you need to report observations of another open field?

Yes



Field Data Sheet

Corresponding Point ID(s): 2

Anthropogenic Disturbance/Management Practices: ATV/Other Vehicle Noise

Primary Open Field Cover Type: Row Cropland (Active)

Estimated Grass Cover (%): 1-10%

Estimated Forb Cover (%): None

Estimated Woody Vegetation Cover (%): None

Estimated Bare Ground (%): 90-100%

Estimated Litter Depth (inches): 0-1"

Average Vegetation Height (inches): 0-2

Dominant Plant Species (Common Names): Corn

Invasive Plant Species (Common Names):

Representative Photo(s):





Field Data Sheet





Field Data Sheet

Notes :

Do you need to report observations of another open field?

Yes



Field Data Sheet

Corresponding Point ID(s): 4

Anthropogenic Disturbance/Management Practices: ATV/Other Vehicle Noise

Primary Open Field Cover Type: Row Cropland (Active)

Estimated Grass Cover (%): 1-10%

Estimated Forb Cover (%): None

Estimated Woody Vegetation Cover (%): None

Estimated Bare Ground (%): 90-100%

Estimated Litter Depth (inches): 0-1"

Average Vegetation Height (inches): 2-4

Dominant Plant Species (Common Names): Corn

Invasive Plant Species (Common Names):

Representative Photo(s):





Field Data Sheet





Field Data Sheet

Notes :

Do you need to report observations of another open field?

Yes



Field Data Sheet

Corresponding Point ID(s): 3

Anthropogenic Disturbance/Management Practices: ATV/Other Vehicle Noise

Primary Open Field Cover Type: Row Cropland (Active)

Estimated Grass Cover (%): 1-10%

Estimated Forb Cover (%): None

Estimated Woody Vegetation Cover (%): None

Estimated Bare Ground (%): 90-100%

Estimated Litter Depth (inches): 0-1"

Average Vegetation Height (inches): 2-4

Dominant Plant Species (Common Names): Corn

Invasive Plant Species (Common Names):

Representative Photo(s):





Field Data Sheet





Field Data Sheet

Notes :

Do you need to report observations of another open field?

Yes



Field Data Sheet

Corresponding Point ID(s): 6

Anthropogenic Disturbance/Management Practices: ATV/Other Vehicle Noise

Primary Open Field Cover Type: Row Cropland (Fallow)

Estimated Grass Cover (%): 50-90%

Estimated Forb Cover (%): 10-25%

Estimated Woody Vegetation Cover (%): None

Estimated Bare Ground (%): None

Estimated Litter Depth (inches): 0-1"

Average Vegetation Height (inches): 36-42

Dominant Plant Species (Common Names): Grass, clover, dandelion

Invasive Plant Species (Common Names):

Representative Photo(s):





Field Data Sheet





Field Data Sheet

Notes :

Do you need to report observations of another open field?

Yes



Field Data Sheet

Corresponding Point ID(s): 5

Anthropogenic Disturbance/Management Practices: ATV/Other Vehicle Noise

Primary Open Field Cover Type: Row Cropland (Active)

Estimated Grass Cover (%): 1-10%

Estimated Forb Cover (%): None

Estimated Woody Vegetation Cover (%): None

Estimated Bare Ground (%): 90-100%

Estimated Litter Depth (inches): 0-1"

Average Vegetation Height (inches): 2-4

Dominant Plant Species (Common Names): Corn

Invasive Plant Species (Common Names):

Representative Photo(s):





Field Data Sheet





Field Data Sheet

Notes :

Do you need to report observations of another open field?

Yes



Field Data Sheet

Corresponding Point ID(s): 10

Anthropogenic Disturbance/Management Practices: ATV/Other Vehicle Noise

Primary Open Field Cover Type: Row Cropland (Active)

Estimated Grass Cover (%): 10-25%

Estimated Forb Cover (%): None

Estimated Woody Vegetation Cover (%): None

Estimated Bare Ground (%): 50-90%

Estimated Litter Depth (inches): None

Average Vegetation Height (inches): 6-12

Dominant Plant Species (Common Names): Corn

Invasive Plant Species (Common Names):

Representative Photo(s):





Field Data Sheet





Field Data Sheet

Notes :

Do you need to report observations of another open field?

Yes



Field Data Sheet

Corresponding Point ID(s): 7.1

Anthropogenic Disturbance/Management Practices: ATV/Other Vehicle Noise

Primary Open Field Cover Type: Row Cropland (Active)

Estimated Grass Cover (%): 10-25%

Estimated Forb Cover (%): None

Estimated Woody Vegetation Cover (%): None

Estimated Bare Ground (%): 90-100%

Estimated Litter Depth (inches): None

Average Vegetation Height (inches): 4-6

Dominant Plant Species (Common Names): Corn

Invasive Plant Species (Common Names):

Representative Photo(s):





Field Data Sheet





Field Data Sheet

Notes :

Do you need to report observations of another open field?

Yes



Field Data Sheet

Corresponding Point ID(s): 7

Anthropogenic Disturbance/Management Practices: ATV/Other Vehicle Noise

Primary Open Field Cover Type: Row Cropland (Active)

Estimated Grass Cover (%): 10-25%

Estimated Forb Cover (%): None

Estimated Woody Vegetation Cover (%): None

Estimated Bare Ground (%): 90-100%

Estimated Litter Depth (inches): 0-1"

Average Vegetation Height (inches): 4-6

Dominant Plant Species (Common Names): Corn

Invasive Plant Species (Common Names):

Representative Photo(s):





Field Data Sheet





Field Data Sheet

Notes :

Do you need to report observations of another open field?

Yes



Field Data Sheet

Corresponding Point ID(s): 8

Anthropogenic Disturbance/Management Practices: ATV/Other Vehicle Noise

Primary Open Field Cover Type: Row Cropland (Active)

Estimated Grass Cover (%): 10-25%

Estimated Forb Cover (%): None

Estimated Woody Vegetation Cover (%): None

Estimated Bare Ground (%): 50-90%

Estimated Litter Depth (inches): 0-1"

Average Vegetation Height (inches): 4-6

Dominant Plant Species (Common Names): Corn

Invasive Plant Species (Common Names):

Representative Photo(s):





Field Data Sheet



Notes :

Do you need to report observations of another open field?

Yes



Field Data Sheet

Corresponding Point ID(s): 9

Anthropogenic Disturbance/Management Practices: ATV/Other Vehicle Noise

Primary Open Field Cover Type: Row Cropland (Active)

Estimated Grass Cover (%): 10-25%

Estimated Forb Cover (%): None

Estimated Woody Vegetation Cover (%): None

Estimated Bare Ground (%): 50-90%

Estimated Litter Depth (inches): 0-1"

Average Vegetation Height (inches): 6-12

Dominant Plant Species (Common Names): Corn

Invasive Plant Species (Common Names):

Representative Photo(s):





Field Data Sheet





Field Data Sheet

Notes :

Do you need to report observations of another open field?

No



Field Data Sheet

Weather Conditions at End of Survey

Temperature (°F): 56

Wind Speed (mph): 13+ (Moderate to Strong Breeze; Large branches in motion)

Wind Direction: SE

Cloud Cover: Overcast (90-100%)

Visibility: Fair (0.62-10 miles; mist or light/moderate precipitation)

Precipitation: Rain (Sustained/Heavy)

Weather Notes: Rain during most of survey

Were there any notable weather events/changes during the survey? Yes

Bird Observation Summary

Were any Endangered/Threatened Species observed?

No

Were any Species of Special Concern observed?

No

Were probable, possible, or confirmed breeding behaviors observed for any Listed Species (Endangered/Threatened/Special Concern)?

No

Were there additional photos documenting birds observed, habitat conditions, and/or other features of interest?

No

Additional Photo(s):

Were any alternate point count survey locations used due to access or visual constraints?

Yes

Alternate Point Count Survey Locations: 15.1



Field Data Sheet

**Incidental bird species observed outside of timed point count surveys
(Alpha Codes or Common Names):**

WITU, WBNU

Overall Survey Notes:



Field Data Sheet

Breeding Bird Survey

Submitted By: abutler@edrdpc.com

Submitted Time: July 17, 2023 3:47 PM

Survey Information

Project Name: Hoffman Falls

Survey Date: June 15, 2023

Surveyor Name: Anna Butler

Points Surveyed: 50-64

Survey Start Time: 05:36

Survey End Time: 10:21

Weather Conditions at Start of Survey

Temperature (°F): 55

Wind Speed (mph): 4 – 7 (Light Breeze; Leaves rustle)

Wind Direction: NW

Cloud Cover: Overcast (90-100%)

Visibility: Fair (0.62-10 miles; mist or light/moderate precipitation)

Precipitation: Rain (Intermittent/Light)

Weather Notes: Drizzle



Field Data Sheet

Open Field Condition Observations

Corresponding Point ID(s): 54

Anthropogenic Disturbance/Management Practices:

Primary Open Field Cover Type:

Estimated Grass Cover (%): None

Estimated Forb Cover (%): None

Estimated Woody Vegetation Cover (%): None

Estimated Bare Ground (%): None

Estimated Litter Depth (inches):

Average Vegetation Height (inches):

Dominant Plant Species (Common Names):

Invasive Plant Species (Common Names):

Representative Photo(s):

Notes :

Do you need to report observations of another open field?

Yes



Field Data Sheet

Corresponding Point ID(s): 63

Anthropogenic Disturbance/Management Practices:

Primary Open Field Cover Type:

Estimated Grass Cover (%): None

Estimated Forb Cover (%): None

Estimated Woody Vegetation Cover (%): None

Estimated Bare Ground (%): None

Estimated Litter Depth (inches):

Average Vegetation Height (inches):

Dominant Plant Species (Common Names):

Invasive Plant Species (Common Names):

Representative Photo(s):

Notes :

Do you need to report observations of another open field?

Yes



Field Data Sheet

Corresponding Point ID(s): 62

Anthropogenic Disturbance/Management Practices:

Primary Open Field Cover Type:

Estimated Grass Cover (%): None

Estimated Forb Cover (%): None

Estimated Woody Vegetation Cover (%): None

Estimated Bare Ground (%): None

Estimated Litter Depth (inches):

Average Vegetation Height (inches):

Dominant Plant Species (Common Names):

Invasive Plant Species (Common Names):

Representative Photo(s):

Notes :

Do you need to report observations of another open field?

Yes



Field Data Sheet

Corresponding Point ID(s): 64

Anthropogenic Disturbance/Management Practices:

Primary Open Field Cover Type:

Estimated Grass Cover (%): None

Estimated Forb Cover (%): None

Estimated Woody Vegetation Cover (%): None

Estimated Bare Ground (%): None

Estimated Litter Depth (inches):

Average Vegetation Height (inches):

Dominant Plant Species (Common Names):

Invasive Plant Species (Common Names):

Representative Photo(s):

Notes :

Do you need to report observations of another open field?

Yes



Field Data Sheet

Corresponding Point ID(s): 61

Anthropogenic Disturbance/Management Practices:

Primary Open Field Cover Type:

Estimated Grass Cover (%): None

Estimated Forb Cover (%): None

Estimated Woody Vegetation Cover (%): None

Estimated Bare Ground (%): None

Estimated Litter Depth (inches):

Average Vegetation Height (inches):

Dominant Plant Species (Common Names):

Invasive Plant Species (Common Names):

Representative Photo(s):

Notes :

Do you need to report observations of another open field?

Yes



Field Data Sheet

Corresponding Point ID(s): 59

Anthropogenic Disturbance/Management Practices:

Primary Open Field Cover Type:

Estimated Grass Cover (%): None

Estimated Forb Cover (%): None

Estimated Woody Vegetation Cover (%): None

Estimated Bare Ground (%): None

Estimated Litter Depth (inches):

Average Vegetation Height (inches):

Dominant Plant Species (Common Names):

Invasive Plant Species (Common Names):

Representative Photo(s):

Notes :

Do you need to report observations of another open field?

Yes



Field Data Sheet

Corresponding Point ID(s): 60

Anthropogenic Disturbance/Management Practices:

Primary Open Field Cover Type:

Estimated Grass Cover (%): None

Estimated Forb Cover (%): None

Estimated Woody Vegetation Cover (%): None

Estimated Bare Ground (%): None

Estimated Litter Depth (inches):

Average Vegetation Height (inches):

Dominant Plant Species (Common Names):

Invasive Plant Species (Common Names):

Representative Photo(s):

Notes :

Do you need to report observations of another open field?

Yes



Field Data Sheet

Corresponding Point ID(s): 58

Anthropogenic Disturbance/Management Practices:

Primary Open Field Cover Type:

Estimated Grass Cover (%): None

Estimated Forb Cover (%): None

Estimated Woody Vegetation Cover (%): None

Estimated Bare Ground (%): None

Estimated Litter Depth (inches):

Average Vegetation Height (inches):

Dominant Plant Species (Common Names):

Invasive Plant Species (Common Names):

Representative Photo(s):

Notes :

Do you need to report observations of another open field?

Yes



Field Data Sheet

Corresponding Point ID(s): 57

Anthropogenic Disturbance/Management Practices: Traffic Noise

Primary Open Field Cover Type: Field Cropland (including hay, wheat, oats, etc.)

Estimated Grass Cover (%): 25-50%

Estimated Forb Cover (%): 25-50%

Estimated Woody Vegetation Cover (%): None

Estimated Bare Ground (%): None

Estimated Litter Depth (inches): 0-1"

Average Vegetation Height (inches):

Dominant Plant Species (Common Names): Grass, clover

Invasive Plant Species (Common Names):

Representative Photo(s):

Notes :

Do you need to report observations of another open field?

Yes



Field Data Sheet

Corresponding Point ID(s): 56

Anthropogenic Disturbance/Management Practices: Traffic Noise

Primary Open Field Cover Type: Row Cropland (Active)

Estimated Grass Cover (%): 25-50%

Estimated Forb Cover (%): 25-50%

Estimated Woody Vegetation Cover (%): None

Estimated Bare Ground (%): 10-25%

Estimated Litter Depth (inches): None

Average Vegetation Height (inches):

Dominant Plant Species (Common Names): Corn, grass, common milkweed, dandelion

Invasive Plant Species (Common Names):

Representative Photo(s):

Notes :

Do you need to report observations of another open field?

Yes



Field Data Sheet

Corresponding Point ID(s): 55

Anthropogenic Disturbance/Management Practices: Traffic Noise

Primary Open Field Cover Type: Row Cropland (Active)

Estimated Grass Cover (%): 1-10%

Estimated Forb Cover (%): 1-10%

Estimated Woody Vegetation Cover (%): None

Estimated Bare Ground (%): 50-90%

Estimated Litter Depth (inches):

Average Vegetation Height (inches):

Dominant Plant Species (Common Names): Corn

Invasive Plant Species (Common Names):

Representative Photo(s):

Notes :

Do you need to report observations of another open field?

Yes



Field Data Sheet

Corresponding Point ID(s): 52

Anthropogenic Disturbance/Management Practices: Traffic Noise

Primary Open Field Cover Type: Row Cropland (Active)

Estimated Grass Cover (%): None

Estimated Forb Cover (%): 25-50%

Estimated Woody Vegetation Cover (%): None

Estimated Bare Ground (%): 25-50%

Estimated Litter Depth (inches): None

Average Vegetation Height (inches):

Dominant Plant Species (Common Names): Soy

Invasive Plant Species (Common Names):

Representative Photo(s):

Notes :

Do you need to report observations of another open field?

Yes



Field Data Sheet

Corresponding Point ID(s): 53

Anthropogenic Disturbance/Management Practices: Traffic Noise

Primary Open Field Cover Type: Row Cropland (Active)

Estimated Grass Cover (%): None

Estimated Forb Cover (%): 25-50%

Estimated Woody Vegetation Cover (%): None

Estimated Bare Ground (%): 25-50%

Estimated Litter Depth (inches):

Average Vegetation Height (inches):

Dominant Plant Species (Common Names): Soy

Invasive Plant Species (Common Names):

Representative Photo(s):

Notes :

Do you need to report observations of another open field?

Yes



Field Data Sheet

Corresponding Point ID(s): 50.1

Anthropogenic Disturbance/Management Practices: Traffic Noise

Primary Open Field Cover Type: Field Cropland (including hay, wheat, oats, etc.)

Estimated Grass Cover (%): 25-50%

Estimated Forb Cover (%): 25-50%

Estimated Woody Vegetation Cover (%): None

Estimated Bare Ground (%): None

Estimated Litter Depth (inches):

Average Vegetation Height (inches):

Dominant Plant Species (Common Names): Grass, bedstraw, buttercup

Invasive Plant Species (Common Names):

Representative Photo(s):

Notes :

Do you need to report observations of another open field?

Yes



Field Data Sheet

Corresponding Point ID(s): 50

Anthropogenic Disturbance/Management Practices: Traffic Noise

Primary Open Field Cover Type: Field Cropland (including hay, wheat, oats, etc.)

Estimated Grass Cover (%): 25-50%

Estimated Forb Cover (%): 25-50%

Estimated Woody Vegetation Cover (%): None

Estimated Bare Ground (%): None

Estimated Litter Depth (inches):

Average Vegetation Height (inches):

Dominant Plant Species (Common Names): Grass, bedstraw, buttercup, clover

Invasive Plant Species (Common Names):

Representative Photo(s):

Notes :

Do you need to report observations of another open field?

Yes



Field Data Sheet

Corresponding Point ID(s): 51

Anthropogenic Disturbance/Management Practices: Traffic Noise

Primary Open Field Cover Type: Row Cropland (Fallow)

Estimated Grass Cover (%): 10-25%

Estimated Forb Cover (%): 10-25%

Estimated Woody Vegetation Cover (%): None

Estimated Bare Ground (%): 25-50%

Estimated Litter Depth (inches):

Average Vegetation Height (inches):

Dominant Plant Species (Common Names): Grass, dogbane, goldenrod, buttercup

Invasive Plant Species (Common Names):

Representative Photo(s):

Notes :

Do you need to report observations of another open field?

No



Field Data Sheet

Weather Conditions at End of Survey

Temperature (°F): 62

Wind Speed (mph): 4 – 7 (Light Breeze; Leaves rustle)

Wind Direction: NW

Cloud Cover: Mostly Cloudy (50% - 90%)

Visibility: Good (10+ miles; clear)

Precipitation: None (Clear)

Weather Notes: Rain stopped by 6AM

Were there any notable weather events/changes during the survey? No

Bird Observation Summary

Were any Endangered/Threatened Species observed?

No

Were any Species of Special Concern observed?

No

Were probable, possible, or confirmed breeding behaviors observed for any Listed Species (Endangered/Threatened/Special Concern)?

No

Were there additional photos documenting birds observed, habitat conditions, and/or other features of interest?

No

Additional Photo(s):

Were any alternate point count survey locations used due to access or visual constraints?

No

Alternate Point Count Survey Locations:



Field Data Sheet

**Incidental bird species observed outside of timed point count surveys
(Alpha Codes or Common Names):**

Overall Survey Notes:

This survey form is incomplete because the app failed mid-survey. Photos saved separately on mobile device. Notes on fields may be incomplete



Field Data Sheet

Breeding Bird Survey

Submitted By: bsmith@edrdpc.com

Submitted Time: June 15, 2023 10:33 AM

Survey Information

Project Name: Hoffman Falls

Survey Date: June 15, 2023

Surveyor Name: Brooke Smith

Points Surveyed: 19-35.1

Survey Start Time: 05:12

Survey End Time: 10:05

Weather Conditions at Start of Survey

Temperature (°F): 54

Wind Speed (mph): 8 – 12 (Gentle Breeze; Leaves and Small twigs in constant motion)

Wind Direction: W

Cloud Cover: Overcast (90-100%)

Visibility: Fair (0.62-10 miles; mist or light/moderate precipitation)

Precipitation: Rain (Intermittent/Light)

Weather Notes:



Field Data Sheet

Open Field Condition Observations

Corresponding Point ID(s): 35.1

Anthropogenic Disturbance/Management Practices: None notable

Primary Open Field Cover Type: Field Cropland (including hay, wheat, oats, etc.)

Estimated Grass Cover (%): 90-100%

Estimated Forb Cover (%): None

Estimated Woody Vegetation Cover (%): None

Estimated Bare Ground (%): None

Estimated Litter Depth (inches): None

Average Vegetation Height (inches): 4-6

Dominant Plant Species (Common Names): Grass

Invasive Plant Species (Common Names):

Representative Photo(s):





Field Data Sheet





Field Data Sheet

Notes :

Do you need to report observations of another open field?

Yes



Field Data Sheet

Corresponding Point ID(s): 35

Anthropogenic Disturbance/Management Practices: Traffic Noise

Primary Open Field Cover Type: Field Cropland (including hay, wheat, oats, etc.)

Estimated Grass Cover (%): 90-100%

Estimated Forb Cover (%): None

Estimated Woody Vegetation Cover (%): None

Estimated Bare Ground (%): None

Estimated Litter Depth (inches): None

Average Vegetation Height (inches): 4-6

Dominant Plant Species (Common Names): Grass

Invasive Plant Species (Common Names):

Representative Photo(s):





Field Data Sheet





Field Data Sheet

Notes :

Do you need to report observations of another open field?

Yes



Field Data Sheet

Corresponding Point ID(s): 34

Anthropogenic Disturbance/Management Practices: None notable

Primary Open Field Cover Type: Field Cropland (including hay, wheat, oats, etc.)

Estimated Grass Cover (%): 50-90%

Estimated Forb Cover (%): None

Estimated Woody Vegetation Cover (%): None

Estimated Bare Ground (%): 1-10%

Estimated Litter Depth (inches): None

Average Vegetation Height (inches): 4-6

Dominant Plant Species (Common Names): Grass

Invasive Plant Species (Common Names):

Representative Photo(s):





Field Data Sheet





Field Data Sheet

Notes :

Do you need to report observations of another open field?

Yes



Field Data Sheet

Corresponding Point ID(s): 33

Anthropogenic Disturbance/Management Practices: None notable

Primary Open Field Cover Type: Field Cropland (including hay, wheat, oats, etc.)

Estimated Grass Cover (%): 90-100%

Estimated Forb Cover (%): None

Estimated Woody Vegetation Cover (%): None

Estimated Bare Ground (%): None

Estimated Litter Depth (inches): None

Average Vegetation Height (inches): 4-6

Dominant Plant Species (Common Names): Grass

Invasive Plant Species (Common Names):

Representative Photo(s):





Field Data Sheet





Field Data Sheet

Notes :

Do you need to report observations of another open field?

Yes



Field Data Sheet

Corresponding Point ID(s): 32

Anthropogenic Disturbance/Management Practices: None notable

Primary Open Field Cover Type: Field Cropland (including hay, wheat, oats, etc.)

Estimated Grass Cover (%): 90-100%

Estimated Forb Cover (%): None

Estimated Woody Vegetation Cover (%): None

Estimated Bare Ground (%): None

Estimated Litter Depth (inches): None

Average Vegetation Height (inches): 2-4

Dominant Plant Species (Common Names): Grass

Invasive Plant Species (Common Names):

Representative Photo(s):





Field Data Sheet





Field Data Sheet

Notes :

Do you need to report observations of another open field?

Yes



Field Data Sheet

Corresponding Point ID(s): 30

Anthropogenic Disturbance/Management Practices: None notable

Primary Open Field Cover Type: Field Cropland (including hay, wheat, oats, etc.)

Estimated Grass Cover (%): 90-100%

Estimated Forb Cover (%): None

Estimated Woody Vegetation Cover (%): None

Estimated Bare Ground (%): None

Estimated Litter Depth (inches): None

Average Vegetation Height (inches): 4-6

Dominant Plant Species (Common Names): Grass

Invasive Plant Species (Common Names):

Representative Photo(s):





Field Data Sheet





Field Data Sheet

Notes :

Do you need to report observations of another open field?

Yes



Field Data Sheet

Corresponding Point ID(s): 31

Anthropogenic Disturbance/Management Practices: None notable

Primary Open Field Cover Type: Field Cropland (including hay, wheat, oats, etc.)

Estimated Grass Cover (%): 90-100%

Estimated Forb Cover (%): None

Estimated Woody Vegetation Cover (%): None

Estimated Bare Ground (%): None

Estimated Litter Depth (inches): None

Average Vegetation Height (inches): 2-4

Dominant Plant Species (Common Names): Grass

Invasive Plant Species (Common Names):

Representative Photo(s):





Field Data Sheet





Field Data Sheet

Notes :

Do you need to report observations of another open field?

Yes



Field Data Sheet

Corresponding Point ID(s): 33.1

Anthropogenic Disturbance/Management Practices: None notable

Primary Open Field Cover Type: Pastureland

Estimated Grass Cover (%): 90-100%

Estimated Forb Cover (%): None

Estimated Woody Vegetation Cover (%): None

Estimated Bare Ground (%): None

Estimated Litter Depth (inches): None

Average Vegetation Height (inches): 24-30

Dominant Plant Species (Common Names): Grass

Invasive Plant Species (Common Names):

Representative Photo(s):





Field Data Sheet





Field Data Sheet

Notes :

Alt.

Do you need to report observations of another open field?

Yes



Field Data Sheet

Corresponding Point ID(s): 29

Anthropogenic Disturbance/Management Practices: None notable

Primary Open Field Cover Type: Field Cropland (including hay, wheat, oats, etc.)

Estimated Grass Cover (%): 90-100%

Estimated Forb Cover (%): None

Estimated Woody Vegetation Cover (%): None

Estimated Bare Ground (%): None

Estimated Litter Depth (inches): None

Average Vegetation Height (inches): 4-6

Dominant Plant Species (Common Names): Grass

Invasive Plant Species (Common Names):

Representative Photo(s):





Field Data Sheet





Field Data Sheet

Notes :

Do you need to report observations of another open field?

Yes



Field Data Sheet

Corresponding Point ID(s): 28

Anthropogenic Disturbance/Management Practices: None notable

Primary Open Field Cover Type: Field Cropland (including hay, wheat, oats, etc.)

Estimated Grass Cover (%): 90-100%

Estimated Forb Cover (%): None

Estimated Woody Vegetation Cover (%): None

Estimated Bare Ground (%): None

Estimated Litter Depth (inches): None

Average Vegetation Height (inches): 6-12

Dominant Plant Species (Common Names): Grass

Invasive Plant Species (Common Names):

Representative Photo(s):





Field Data Sheet





Field Data Sheet

Notes :

Do you need to report observations of another open field?

Yes



Field Data Sheet

Corresponding Point ID(s): 27

Anthropogenic Disturbance/Management Practices: None notable

Primary Open Field Cover Type: Field Cropland (including hay, wheat, oats, etc.)

Estimated Grass Cover (%): 90-100%

Estimated Forb Cover (%): None

Estimated Woody Vegetation Cover (%): None

Estimated Bare Ground (%): None

Estimated Litter Depth (inches): None

Average Vegetation Height (inches): 4-6

Dominant Plant Species (Common Names): Grass

Invasive Plant Species (Common Names):

Representative Photo(s):





Field Data Sheet





Field Data Sheet

Notes :

Do you need to report observations of another open field?

Yes



Field Data Sheet

Corresponding Point ID(s): 24

Anthropogenic Disturbance/Management Practices: None notable

Primary Open Field Cover Type: Other (describe in notes)

Estimated Grass Cover (%): None

Estimated Forb Cover (%): 25-50%

Estimated Woody Vegetation Cover (%): 25-50%

Estimated Bare Ground (%): None

Estimated Litter Depth (inches): None

Average Vegetation Height (inches): 36-42

Dominant Plant Species (Common Names): Dogwood

Invasive Plant Species (Common Names):

Representative Photo(s):





Field Data Sheet





Field Data Sheet

Notes :

Successional shrubland

Do you need to report observations of another open field?

Yes



Field Data Sheet

Corresponding Point ID(s): 19

Anthropogenic Disturbance/Management Practices: Traffic Noise

Primary Open Field Cover Type: Row Cropland (Active)

Estimated Grass Cover (%): None

Estimated Forb Cover (%): 1-10%

Estimated Woody Vegetation Cover (%): None

Estimated Bare Ground (%): 90-100%

Estimated Litter Depth (inches): 0-1"

Average Vegetation Height (inches): 0-2

Dominant Plant Species (Common Names):

Invasive Plant Species (Common Names):

Representative Photo(s):





Field Data Sheet





Field Data Sheet

Notes :

Do you need to report observations of another open field?

Yes



Field Data Sheet

Corresponding Point ID(s): 20

Anthropogenic Disturbance/Management Practices: None notable

Primary Open Field Cover Type: Row Cropland (Active)

Estimated Grass Cover (%): None

Estimated Forb Cover (%): 1-10%

Estimated Woody Vegetation Cover (%): None

Estimated Bare Ground (%): 90-100%

Estimated Litter Depth (inches): 0-1"

Average Vegetation Height (inches): 0-2

Dominant Plant Species (Common Names):

Invasive Plant Species (Common Names):

Representative Photo(s):





Field Data Sheet





Field Data Sheet

Notes :

Do you need to report observations of another open field?

Yes



Field Data Sheet

Corresponding Point ID(s): 21

Anthropogenic Disturbance/Management Practices: None notable

Primary Open Field Cover Type: Row Cropland (Active)

Estimated Grass Cover (%): None

Estimated Forb Cover (%): 1-10%

Estimated Woody Vegetation Cover (%): None

Estimated Bare Ground (%): 90-100%

Estimated Litter Depth (inches): None

Average Vegetation Height (inches): 0-2

Dominant Plant Species (Common Names): Beans

Invasive Plant Species (Common Names):

Representative Photo(s):





Field Data Sheet





Field Data Sheet

Notes :

Do you need to report observations of another open field?

No

This figure has been redacted from this publicly available document because it contains protected/confidential information regarding the proposed facility location and/or the detailed locations of NYS threatened or endangered species.



Field Data Sheet

Alternate Point Count Survey Locations: 33.1

**Incidental bird species observed outside of timed point count surveys
(Alpha Codes or Common Names):**

Overall Survey Notes:



Field Data Sheet

Breeding Bird Survey

Submitted By: fsimeone@edrdpc.com

Submitted Time: June 20, 2023 12:21 PM

Survey Information

Project Name: Hoffman Falls

Survey Date: June 20, 2023

Surveyor Name: Frank Simeone

Points Surveyed: 18-35.1

Survey Start Time: 04:56

Survey End Time: 10:03

Weather Conditions at Start of Survey

Temperature (°F): 55

Wind Speed (mph): 8 – 12 (Gentle Breeze; Leaves and Small twigs in constant motion)

Wind Direction: S

Cloud Cover: Partly Cloudy (25% - 50%)

Visibility: Good (10+ miles; clear)

Precipitation: None (Clear)

Weather Notes:



Field Data Sheet

Open Field Condition Observations

Corresponding Point ID(s): 21

Anthropogenic Disturbance/Management Practices: None notable

Primary Open Field Cover Type: Row Cropland (Active)

Estimated Grass Cover (%): 25-50%

Estimated Forb Cover (%): 25-50%

Estimated Woody Vegetation Cover (%): None

Estimated Bare Ground (%): 25-50%

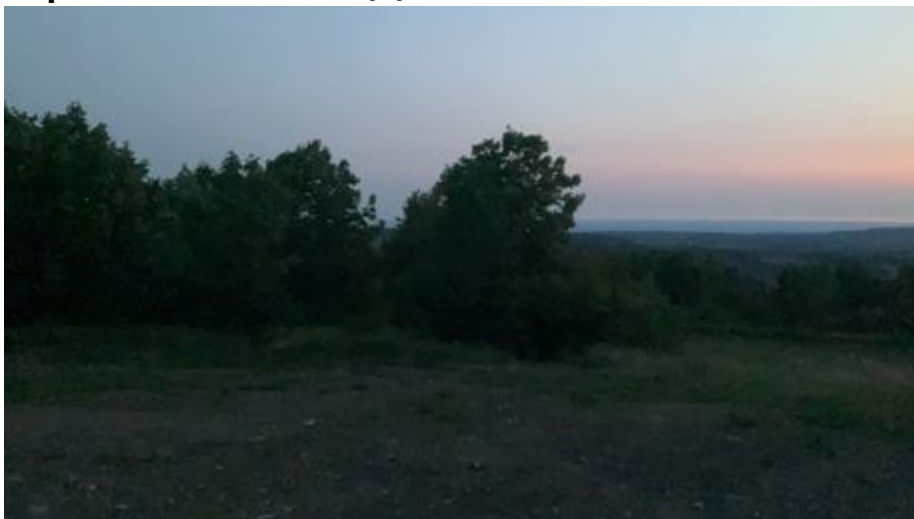
Estimated Litter Depth (inches): 0-1"

Average Vegetation Height (inches): 2-4

Dominant Plant Species (Common Names): Grass, dandelion, clover, birds foot trefoil, daisy, goldenrod, bedstraw

Invasive Plant Species (Common Names):

Representative Photo(s):





Field Data Sheet





Field Data Sheet

Notes :

Do you need to report observations of another open field?

Yes



Field Data Sheet

Corresponding Point ID(s): 20

Anthropogenic Disturbance/Management Practices: None notable

Primary Open Field Cover Type: Row Cropland (Active)

Estimated Grass Cover (%): 1-10%

Estimated Forb Cover (%): 1-10%

Estimated Woody Vegetation Cover (%): None

Estimated Bare Ground (%): 50-90%

Estimated Litter Depth (inches): 0-1"

Average Vegetation Height (inches): 0-2

Dominant Plant Species (Common Names): Soybean, grass, milkweed,

Invasive Plant Species (Common Names):

Representative Photo(s):





Field Data Sheet





Field Data Sheet

Notes :

Do you need to report observations of another open field?

Yes



Field Data Sheet

Corresponding Point ID(s): 19

Anthropogenic Disturbance/Management Practices: None notable

Primary Open Field Cover Type: Row Cropland (Active)

Estimated Grass Cover (%): 1-10%

Estimated Forb Cover (%): None

Estimated Woody Vegetation Cover (%): None

Estimated Bare Ground (%): 90-100%

Estimated Litter Depth (inches): 0-1"

Average Vegetation Height (inches): 0-2

Dominant Plant Species (Common Names): Soybean

Invasive Plant Species (Common Names):

Representative Photo(s):





Field Data Sheet





Field Data Sheet

Notes :

Do you need to report observations of another open field?

Yes



Field Data Sheet

Corresponding Point ID(s): 29

Anthropogenic Disturbance/Management Practices: None notable

Primary Open Field Cover Type: Field Cropland (including hay, wheat, oats, etc.)

Estimated Grass Cover (%): 50-90%

Estimated Forb Cover (%): 1-10%

Estimated Woody Vegetation Cover (%): None

Estimated Bare Ground (%): 1-10%

Estimated Litter Depth (inches): None

Average Vegetation Height (inches): 6-12

Dominant Plant Species (Common Names): Grass, hay, daisy, white campion,

Invasive Plant Species (Common Names):

Representative Photo(s):





Field Data Sheet





Field Data Sheet

Notes :

Do you need to report observations of another open field?

Yes



Field Data Sheet

Corresponding Point ID(s): 28

Anthropogenic Disturbance/Management Practices: None notable

Primary Open Field Cover Type: Field Cropland (including hay, wheat, oats, etc.)

Estimated Grass Cover (%): 50-90%

Estimated Forb Cover (%): 1-10%

Estimated Woody Vegetation Cover (%): None

Estimated Bare Ground (%): 1-10%

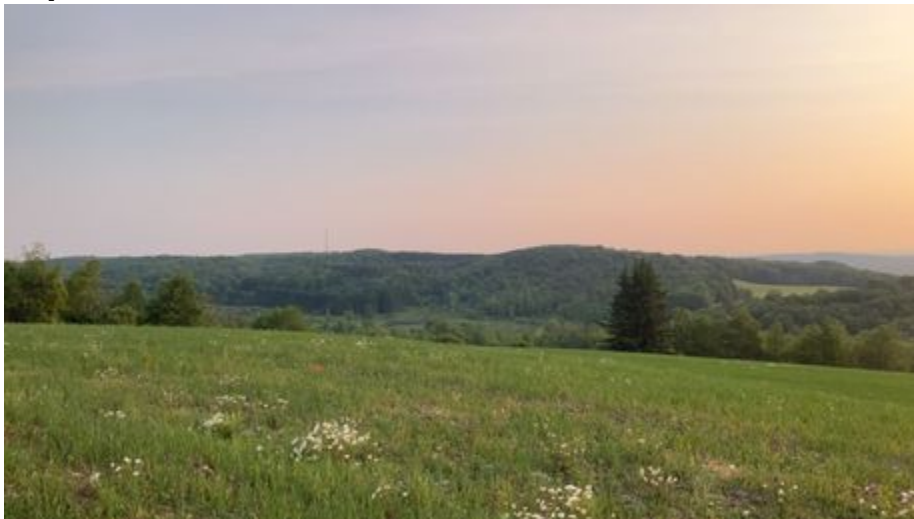
Estimated Litter Depth (inches): None

Average Vegetation Height (inches): 6-12

Dominant Plant Species (Common Names): Grass, hay, daisy, vetch

Invasive Plant Species (Common Names):

Representative Photo(s):





Field Data Sheet





Field Data Sheet

Notes :

Do you need to report observations of another open field?

Yes



Field Data Sheet

Corresponding Point ID(s): 27

Anthropogenic Disturbance/Management Practices: None notable

Primary Open Field Cover Type: Field Cropland (including hay, wheat, oats, etc.)

Estimated Grass Cover (%): 50-90%

Estimated Forb Cover (%): 1-10%

Estimated Woody Vegetation Cover (%): None

Estimated Bare Ground (%): 1-10%

Estimated Litter Depth (inches): None

Average Vegetation Height (inches): 6-12

Dominant Plant Species (Common Names): Hay, grass, birds foot trefoil, daisy,

Invasive Plant Species (Common Names):

Representative Photo(s):





Field Data Sheet





Field Data Sheet

Notes :

Do you need to report observations of another open field?

Yes



Field Data Sheet

Corresponding Point ID(s): 33.3

Anthropogenic Disturbance/Management Practices: None notable

Primary Open Field Cover Type: Pastureland

Estimated Grass Cover (%): 50-90%

Estimated Forb Cover (%): 1-10%

Estimated Woody Vegetation Cover (%): None

Estimated Bare Ground (%): None

Estimated Litter Depth (inches): 1-3"

Average Vegetation Height (inches): 36-42

Dominant Plant Species (Common Names): Grass, buttercup,

Invasive Plant Species (Common Names):

Representative Photo(s):





Field Data Sheet





Field Data Sheet

Notes :

33.3 used instead of 33.1

Do you need to report observations of another open field?

Yes



Field Data Sheet

Corresponding Point ID(s): 35.1

Anthropogenic Disturbance/Management Practices: ATV/Other Vehicle Noise

Primary Open Field Cover Type: Field Cropland (including hay, wheat, oats, etc.)

Estimated Grass Cover (%): 50-90%

Estimated Forb Cover (%): 10-25%

Estimated Woody Vegetation Cover (%): None

Estimated Bare Ground (%): None

Estimated Litter Depth (inches): 0-1"

Average Vegetation Height (inches): 6-12

Dominant Plant Species (Common Names): Grass, clover, bedstraw, dandelion, daisy,

Invasive Plant Species (Common Names):

Representative Photo(s):





Field Data Sheet





Field Data Sheet

Notes :

Do you need to report observations of another open field?

Yes



Field Data Sheet

Corresponding Point ID(s): 35

Anthropogenic Disturbance/Management Practices: ATV/Other Vehicle Noise

Primary Open Field Cover Type: Field Cropland (including hay, wheat, oats, etc.)

Estimated Grass Cover (%): 50-90%

Estimated Forb Cover (%): 10-25%

Estimated Woody Vegetation Cover (%): None

Estimated Bare Ground (%): None

Estimated Litter Depth (inches): 0-1"

Average Vegetation Height (inches): 6-12

Dominant Plant Species (Common Names): Grass, clover, dandelion, bedstraw, buttercup,

Invasive Plant Species (Common Names):

Representative Photo(s):





Field Data Sheet





Field Data Sheet

Notes :

Do you need to report observations of another open field?

Yes



Field Data Sheet

Corresponding Point ID(s): 34

Anthropogenic Disturbance/Management Practices: ATV/Other Vehicle Noise

Primary Open Field Cover Type: Field Cropland (including hay, wheat, oats, etc.)

Estimated Grass Cover (%): 50-90%

Estimated Forb Cover (%): 10-25%

Estimated Woody Vegetation Cover (%): None

Estimated Bare Ground (%): 1-10%

Estimated Litter Depth (inches): None

Average Vegetation Height (inches): 6-12

Dominant Plant Species (Common Names): Grass, clover, dandelion, bedstraw, buttercup,

Invasive Plant Species (Common Names):

Representative Photo(s):





Field Data Sheet





Field Data Sheet

Notes :

Do you need to report observations of another open field?

Yes



Field Data Sheet

Corresponding Point ID(s): 33

Anthropogenic Disturbance/Management Practices: ATV/Other Vehicle Noise

Primary Open Field Cover Type: Field Cropland (including hay, wheat, oats, etc.)

Estimated Grass Cover (%): 50-90%

Estimated Forb Cover (%): 1-10%

Estimated Woody Vegetation Cover (%): None

Estimated Bare Ground (%): 1-10%

Estimated Litter Depth (inches): 0-1"

Average Vegetation Height (inches): 4-6

Dominant Plant Species (Common Names): Grass, clover, dandelion, bedstraw, strawberry

Invasive Plant Species (Common Names):

Representative Photo(s):





Field Data Sheet





Field Data Sheet

Notes :

Do you need to report observations of another open field?

Yes



Field Data Sheet

Corresponding Point ID(s): 32

Anthropogenic Disturbance/Management Practices: None notable

Primary Open Field Cover Type: Field Cropland (including hay, wheat, oats, etc.)

Estimated Grass Cover (%): 50-90%

Estimated Forb Cover (%): 1-10%

Estimated Woody Vegetation Cover (%): None

Estimated Bare Ground (%): None

Estimated Litter Depth (inches): None

Average Vegetation Height (inches): 4-6

Dominant Plant Species (Common Names): Grass, clover, dandelion, daisy

Invasive Plant Species (Common Names):

Representative Photo(s):





Field Data Sheet





Field Data Sheet

Notes :

Do you need to report observations of another open field?

Yes



Field Data Sheet

Corresponding Point ID(s): 31

Anthropogenic Disturbance/Management Practices: None notable

Primary Open Field Cover Type: Field Cropland (including hay, wheat, oats, etc.)

Estimated Grass Cover (%): 50-90%

Estimated Forb Cover (%): 10-25%

Estimated Woody Vegetation Cover (%): None

Estimated Bare Ground (%): None

Estimated Litter Depth (inches): 0-1"

Average Vegetation Height (inches): 4-6

Dominant Plant Species (Common Names): Grass, clover, dandelion, strawberries, buttercup, bedstraw

Invasive Plant Species (Common Names): Mugwort

Representative Photo(s):





Field Data Sheet





Field Data Sheet

Notes :

Do you need to report observations of another open field?

Yes



Field Data Sheet

Corresponding Point ID(s): 30

Anthropogenic Disturbance/Management Practices: None notable

Primary Open Field Cover Type: Field Cropland (including hay, wheat, oats, etc.)

Estimated Grass Cover (%): 50-90%

Estimated Forb Cover (%): 10-25%

Estimated Woody Vegetation Cover (%): None

Estimated Bare Ground (%): None

Estimated Litter Depth (inches): 0-1"

Average Vegetation Height (inches): 6-12

Dominant Plant Species (Common Names): Grass, clover, dandelion, bedstraw, strawberry, vetch,

Invasive Plant Species (Common Names):

Representative Photo(s):





Field Data Sheet





Field Data Sheet

Notes :

Do you need to report observations of another open field?

Yes



Field Data Sheet

Corresponding Point ID(s): 18

Anthropogenic Disturbance/Management Practices: None notable

Primary Open Field Cover Type: Field Cropland (including hay, wheat, oats, etc.)

Estimated Grass Cover (%): 50-90%

Estimated Forb Cover (%): 1-10%

Estimated Woody Vegetation Cover (%): None

Estimated Bare Ground (%): 10-25%

Estimated Litter Depth (inches): 1-3"

Average Vegetation Height (inches): 42-48

Dominant Plant Species (Common Names): Grass, clover, corn,

Invasive Plant Species (Common Names):

Representative Photo(s):





Field Data Sheet





Field Data Sheet

Notes :

Do you need to report observations of another open field?

Yes



Field Data Sheet

Corresponding Point ID(s): 24

Anthropogenic Disturbance/Management Practices: None notable

Primary Open Field Cover Type: Successional Old Field

Estimated Grass Cover (%): 25-50%

Estimated Forb Cover (%): 10-25%

Estimated Woody Vegetation Cover (%): 25-50%

Estimated Bare Ground (%): None

Estimated Litter Depth (inches): 0-1"

Average Vegetation Height (inches): 24-30

Dominant Plant Species (Common Names): Grass, goldenrod, dogwood, pine, strawberries

Invasive Plant Species (Common Names): Honeysuckle

Representative Photo(s):

Notes :

Photos not taken.

Do you need to report observations of another open field?

No



Field Data Sheet

Weather Conditions at End of Survey

Temperature (°F): 69

Wind Speed (mph): 4 – 7 (Light Breeze; Leaves rustle)

Wind Direction: SE

Cloud Cover: Mostly Cloudy (50% - 90%)

Visibility: Good (10+ miles; clear)

Precipitation: None (Clear)

Weather Notes:

Were there any notable weather events/changes during the survey? No

Bird Observation Summary

Were any Endangered/Threatened Species observed?

No

Were any Species of Special Concern observed?

No

Were probable, possible, or confirmed breeding behaviors observed for any Listed Species (Endangered/Threatened/Special Concern)?

No

Were there additional photos documenting birds observed, habitat conditions, and/or other features of interest?

No

Additional Photo(s):

Were any alternate point count survey locations used due to access or visual constraints?

Yes

Alternate Point Count Survey Locations: 33.3 instead of 33.1



Field Data Sheet

**Incidental bird species observed outside of timed point count surveys
(Alpha Codes or Common Names):**

VEER

Overall Survey Notes:



Field Data Sheet

Breeding Bird Survey

Submitted By: bsmith@edrdpc.com

Submitted Time: June 21, 2023 11:36 AM

Survey Information

Project Name: Hoffman Falls

Survey Date: June 21, 2023

Surveyor Name: Brooke Smith

Points Surveyed: 1-16, 17

Survey Start Time: 05:10

Survey End Time: 10:20

Weather Conditions at Start of Survey

Temperature (°F): 54

Wind Speed (mph): 4 – 7 (Light Breeze; Leaves rustle)

Wind Direction: SE

Cloud Cover: Overcast (90-100%)

Visibility: Good (10+ miles; clear)

Precipitation: None (Clear)

Weather Notes:



Field Data Sheet

Open Field Condition Observations

Corresponding Point ID(s): 1

Anthropogenic Disturbance/Management Practices: None notable

Primary Open Field Cover Type: Row Cropland (Active)

Estimated Grass Cover (%): None

Estimated Forb Cover (%): 10-25%

Estimated Woody Vegetation Cover (%): None

Estimated Bare Ground (%): 50-90%

Estimated Litter Depth (inches): 0-1"

Average Vegetation Height (inches): 4-6

Dominant Plant Species (Common Names): Corn

Invasive Plant Species (Common Names):

Representative Photo(s):



Field Data Sheet





Field Data Sheet



Notes :



Field Data Sheet

Do you need to report observations of another open field?

Yes



Field Data Sheet

Corresponding Point ID(s): 2

Anthropogenic Disturbance/Management Practices: None notable

Primary Open Field Cover Type: Row Cropland (Active)

Estimated Grass Cover (%): None

Estimated Forb Cover (%): 10-25%

Estimated Woody Vegetation Cover (%): None

Estimated Bare Ground (%): 50-90%

Estimated Litter Depth (inches): 0-1"

Average Vegetation Height (inches): 4-6

Dominant Plant Species (Common Names): Corn

Invasive Plant Species (Common Names):

Representative Photo(s):





Field Data Sheet





Field Data Sheet



Notes :

Do you need to report observations of another open field?

Yes



Field Data Sheet

Corresponding Point ID(s): 5

Anthropogenic Disturbance/Management Practices: None notable

Primary Open Field Cover Type: Row Cropland (Active)

Estimated Grass Cover (%): None

Estimated Forb Cover (%): 10-25%

Estimated Woody Vegetation Cover (%): None

Estimated Bare Ground (%): 50-90%

Estimated Litter Depth (inches): 0-1"

Average Vegetation Height (inches): 4-6

Dominant Plant Species (Common Names): Corn

Invasive Plant Species (Common Names):

Representative Photo(s):





Field Data Sheet





Field Data Sheet



Notes :

Do you need to report observations of another open field?

Yes



Field Data Sheet

Corresponding Point ID(s): 4

Anthropogenic Disturbance/Management Practices: None notable

Primary Open Field Cover Type: Row Cropland (Active)

Estimated Grass Cover (%): None

Estimated Forb Cover (%): 25-50%

Estimated Woody Vegetation Cover (%): None

Estimated Bare Ground (%): 50-90%

Estimated Litter Depth (inches): 0-1"

Average Vegetation Height (inches): 4-6

Dominant Plant Species (Common Names): Corn

Invasive Plant Species (Common Names):

Representative Photo(s):





Field Data Sheet





Field Data Sheet



Notes :

Do you need to report observations of another open field?

Yes



Field Data Sheet

Corresponding Point ID(s): 3

Anthropogenic Disturbance/Management Practices: None notable

Primary Open Field Cover Type: Row Cropland (Active)

Estimated Grass Cover (%): None

Estimated Forb Cover (%): 10-25%

Estimated Woody Vegetation Cover (%): None

Estimated Bare Ground (%): 50-90%

Estimated Litter Depth (inches): 0-1"

Average Vegetation Height (inches): 4-6

Dominant Plant Species (Common Names): Corn

Invasive Plant Species (Common Names):

Representative Photo(s):





Field Data Sheet





Field Data Sheet



Notes :

Do you need to report observations of another open field?

Yes



Field Data Sheet

Corresponding Point ID(s): 6

Anthropogenic Disturbance/Management Practices: None notable

Primary Open Field Cover Type: Field Cropland (including hay, wheat, oats, etc.)

Estimated Grass Cover (%): None

Estimated Forb Cover (%): 90-100%

Estimated Woody Vegetation Cover (%): None

Estimated Bare Ground (%): None

Estimated Litter Depth (inches): 1-3"

Average Vegetation Height (inches): 4-6

Dominant Plant Species (Common Names): Wheat

Invasive Plant Species (Common Names):

Representative Photo(s):





Field Data Sheet





Field Data Sheet



Notes :

Do you need to report observations of another open field?

Yes



Field Data Sheet

Corresponding Point ID(s): 11

Anthropogenic Disturbance/Management Practices: Traffic Noise

Primary Open Field Cover Type: Row Cropland (Active)

Estimated Grass Cover (%): None

Estimated Forb Cover (%): 10-25%

Estimated Woody Vegetation Cover (%): None

Estimated Bare Ground (%): 50-90%

Estimated Litter Depth (inches): None

Average Vegetation Height (inches): 4-6

Dominant Plant Species (Common Names): Corn

Invasive Plant Species (Common Names):

Representative Photo(s):





Field Data Sheet





Field Data Sheet

Notes :

Do you need to report observations of another open field?

Yes



Field Data Sheet

Corresponding Point ID(s): 12

Anthropogenic Disturbance/Management Practices: None notable

Primary Open Field Cover Type: Field Cropland (including hay, wheat, oats, etc.)

Estimated Grass Cover (%): 50-90%

Estimated Forb Cover (%): 50-90%

Estimated Woody Vegetation Cover (%): None

Estimated Bare Ground (%): None

Estimated Litter Depth (inches): None

Average Vegetation Height (inches): 12-18

Dominant Plant Species (Common Names):

Invasive Plant Species (Common Names):

Representative Photo(s):





Field Data Sheet





Field Data Sheet

Notes :

Do you need to report observations of another open field?

Yes



Field Data Sheet

Corresponding Point ID(s): 10

Anthropogenic Disturbance/Management Practices: None notable

Primary Open Field Cover Type: Row Cropland (Active)

Estimated Grass Cover (%): None

Estimated Forb Cover (%): 10-25%

Estimated Woody Vegetation Cover (%): None

Estimated Bare Ground (%): 50-90%

Estimated Litter Depth (inches): None

Average Vegetation Height (inches): 6-12

Dominant Plant Species (Common Names): Corn

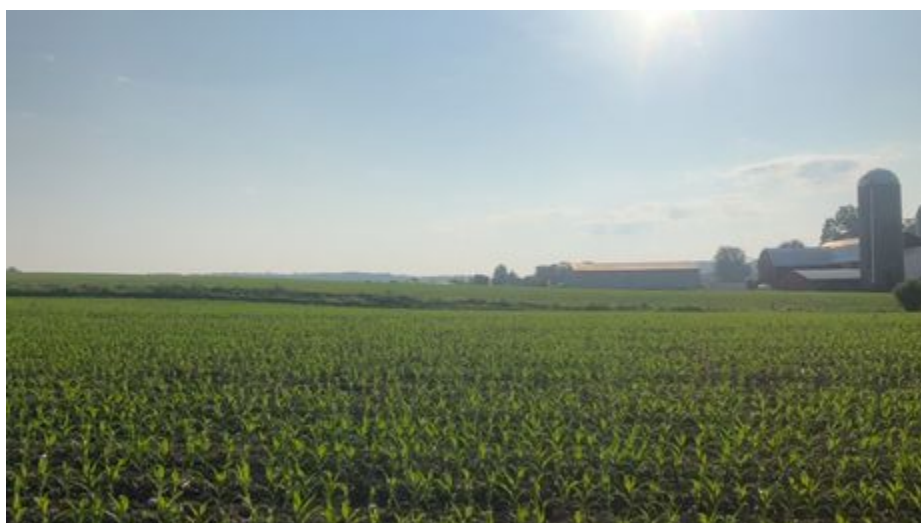
Invasive Plant Species (Common Names):

Representative Photo(s):





Field Data Sheet





Field Data Sheet

Notes :

Do you need to report observations of another open field?

Yes



Field Data Sheet

Corresponding Point ID(s): 9

Anthropogenic Disturbance/Management Practices: None notable

Primary Open Field Cover Type: Row Cropland (Active)

Estimated Grass Cover (%): None

Estimated Forb Cover (%): 10-25%

Estimated Woody Vegetation Cover (%): None

Estimated Bare Ground (%): 50-90%

Estimated Litter Depth (inches): None

Average Vegetation Height (inches): 6-12

Dominant Plant Species (Common Names): Corn

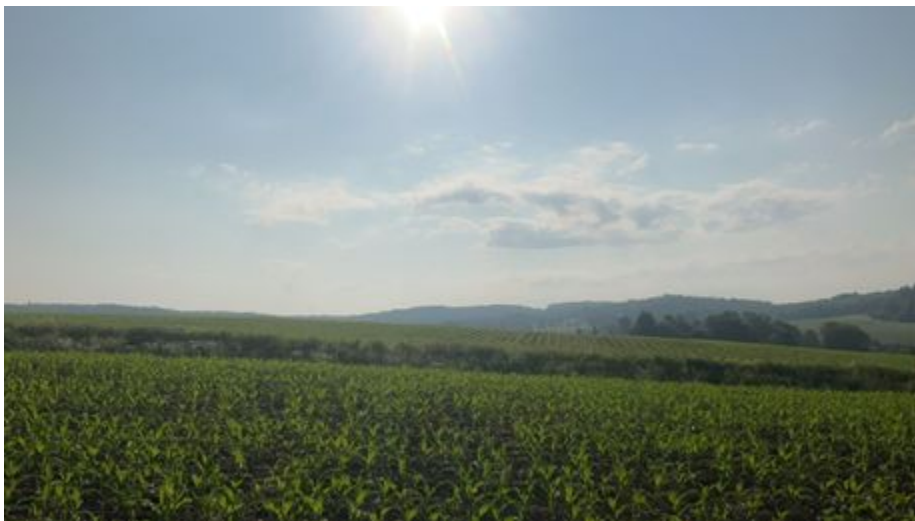
Invasive Plant Species (Common Names):

Representative Photo(s):





Field Data Sheet





Field Data Sheet

Notes :

Do you need to report observations of another open field?

Yes



Field Data Sheet

Corresponding Point ID(s): 8

Anthropogenic Disturbance/Management Practices: Traffic Noise

Primary Open Field Cover Type: Row Cropland (Active)

Estimated Grass Cover (%): None

Estimated Forb Cover (%): 10-25%

Estimated Woody Vegetation Cover (%): None

Estimated Bare Ground (%): 50-90%

Estimated Litter Depth (inches): None

Average Vegetation Height (inches): 4-6

Dominant Plant Species (Common Names): Corn

Invasive Plant Species (Common Names):

Representative Photo(s):





Field Data Sheet





Field Data Sheet

Notes :

Do you need to report observations of another open field?

Yes



Field Data Sheet

Corresponding Point ID(s): 7

Anthropogenic Disturbance/Management Practices: None notable

Primary Open Field Cover Type: Row Cropland (Active)

Estimated Grass Cover (%): None

Estimated Forb Cover (%): 10-25%

Estimated Woody Vegetation Cover (%): None

Estimated Bare Ground (%): 50-90%

Estimated Litter Depth (inches): None

Average Vegetation Height (inches): 6-12

Dominant Plant Species (Common Names): Corn

Invasive Plant Species (Common Names):

Representative Photo(s):





Field Data Sheet





Field Data Sheet

Notes :

Do you need to report observations of another open field?

Yes



Field Data Sheet

Corresponding Point ID(s): 7.1

Anthropogenic Disturbance/Management Practices: None notable

Primary Open Field Cover Type: Row Cropland (Active)

Estimated Grass Cover (%): None

Estimated Forb Cover (%): 10-25%

Estimated Woody Vegetation Cover (%): None

Estimated Bare Ground (%): 50-90%

Estimated Litter Depth (inches): None

Average Vegetation Height (inches): 6-12

Dominant Plant Species (Common Names): Corn

Invasive Plant Species (Common Names):

Representative Photo(s):

