

Viewpoint Sensitivity¹:

Scenic Quality:

- ☐ Low
- ☒ Moderate
- ☒ High

Viewer Exposure

Frequency:

- ☒ Rare
- ☐ Occasional
- ☒ Regular/Repeated

Duration of View:

- ☐ Short/Brief/Fleeting
- ☒ Moderate
- ☒ Long

¹Viewpoint Sensitivity information is gathered from rating panel results. Scenic Quality is an average based on Low = 1, Moderate = 2, High = 3. Viewer Exposure reflects all those selected by the review panel.

Contrast Rating Scores²:

Component	Score	Contrast Rating
	Install	
Landform	2.2	Moderate
Vegetation	2.3	Moderate/Appreciable
Land Use	2.5	Moderate/Appreciable
Water	N/A	N/A
Sky	3.0	Appreciable
Viewer Activity	2.7	Moderate/Appreciable
AVERAGE	2.5	Moderate/Appreciable

² Contrast Rating Scale: 0.0 - 0.2 (Insignificant), 0.3 - 0.7 (Insignificant/Minimal), 0.8 - 1.2 (Minimal), 1.3 - 1.7 (Minimal/Moderate), 1.8 - 2.2 (Moderate), 2.3 - 2.7 (Moderate/Appreciable), 2.8 - 3.2 (Appreciable) 3.3 - 3.7 Appreciable/Strong), 3.8 - 4.0 (Strong).

Contrast Rating - Lowest and Highest Scores:

Post - Install		
Component	Score	
	Low	High
Landform	0.5	3.0
Vegetation	1.5	3.0
Land Use	2.0	3.0
Water	NA	NA
Sky	3.0	3.0
Viewer Activity	2.5	3.0

Existing View



Proposed View (Post Installation)



Existing View

Viewpoint 23 is located on Stone Bridge Road in the Town of Nelson, approximately 0.8 miles from the nearest proposed wind turbine that would be visible in the selected photo's field of view. This viewpoint occurs in the Agricultural/Rural Residential LSZ and is typical of views available to residents traveling local roads and those living in nearby homes. In the selected photo, the existing view to the northeast includes the surface of the road in the immediate foreground, bordered by a mowed shoulder and band of unmowed goldenrod. Behind the vegetation along the road shoulder, the middle ground includes a mix of managed agricultural fields, farm structures and equipment, and a patch of unmanaged successional old field vegetation. Beyond the fields, a band of trees defines the edge of a woodlot that follows the gently rolling topography up to an undulating horizon line that blocks views of more distant landscape features. An overhead utility line, set well back from the road edge, is the only interruption to an otherwise clear and open sky. The rolling hills enclose the view, and the presence of agricultural fields and farm structures equipment give the view a strong rural/agricultural character. Scenic quality of the existing view was characterized as high by the rating panel.

Proposed View

With the proposed Project in place, two wind turbines and a steel lattice met tower are prominent new additions to the view. The vertical line of these new structures is consistent with the existing utility poles, but their scale contrast with the existing landform and vegetation is notable. Shadowing from the sun also makes these structures stand out against the clear blue sky. The turbines and met tower do not appear totally out of place in a working agricultural landscape with existing built features already present. However, they are somewhat discordant features that serve as focal points adding visual clutter to the view, and the vertical line of these components was viewed to have moderate to appreciable contrast with the horizontal landscape.

Hoffman Falls Wind Project

Towns of Eaton, Fenner, Nelson, and Smithfield, Madison County, New York

EXISTING VIEW



Note: Printed at actual size, the existing view image is 15 inches wide by 10 inches high. At this size and focal length, the existing view image should be viewed from a distance 21 inches from the eye of the viewer.



This scale is designed to insure the simulation images are printed at the intended size.

VIEWPOINT 23
Stone Bridge Road

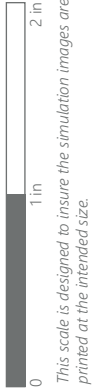
Hoffman Falls Wind Project
Towns of Eaton, Fenner, Nelson, and Smithfield, Madison County, New York



PHOTOSIMULATION



Note: Printed at actual size, the resulting simulation image is 15 inches wide by 10 inches high. At this size and focal length, the simulation should be viewed from a distance 21 inches from the eye of the viewer.



VIEWPOINT 23
Stone Bridge Road

Hoffman Falls Wind Project
Towns of Eaton, Fenner, Nelson, and Smithfield, Madison County, New York





Note: Printed at actual size, the resulting simulation image is 15 inches wide by 10 inches high. At this size and focal length, the simulation should be viewed from a distance 21 inches from the eye of the viewer.

0 1 in 2 in
This scale is designed to insure the simulation images are printed at the intended size.

VIEWPOINT 23
Stone Bridge Road

Hoffman Falls Wind Project
Towns of Eaton, Fenner, Nelson, and Smithfield, Madison County, New York





Note: The image above is a panorama photograph taken from Stoney Pond State Forest in the Town of Nelson panning clockwise from northwest (left) to northeast (right). The green rectangle represents the extent of the simulated photograph.

VIEWPOINT 25

Stoney Pond State Forest

VIEWPOINT INFORMATION

Location: Stoney Pond State Forest

Town: Nelson

County: Madison

Latitude: 42.88129° N

Longitude: 75.71224° W

LOCATION INFORMATION

Distance Zone Represented in View: Middle

Ground

Viewer Distance*: 2.6 miles

Landscape Similarity Zone: Water

Viewer/User Group(s): Local Residents, Tourists/

Recreational Users

Visually Sensitive Resource(s): Stoney Pond,

Stoney Pond State Forest

PHOTOGRAPH INFORMATION

Date: August 31, 2023

Time: 11:45 AM

Camera: Canon EOS 5D Mark IV

Resolution: 24 Megapixels

Lens Focal Length (35mm equivalent): 50 mm

Camera Elevation: 1,544 feet

Field of View: 39 degrees

Direction of View: North-northwest

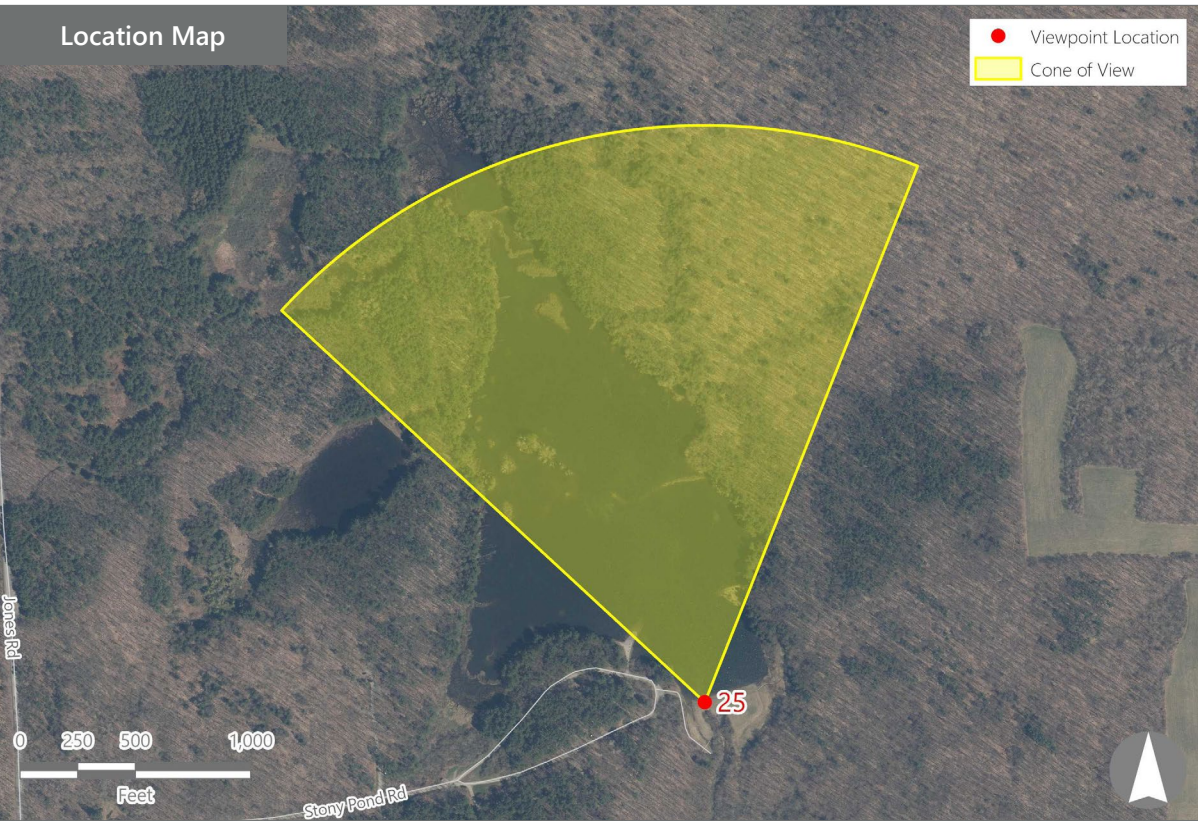
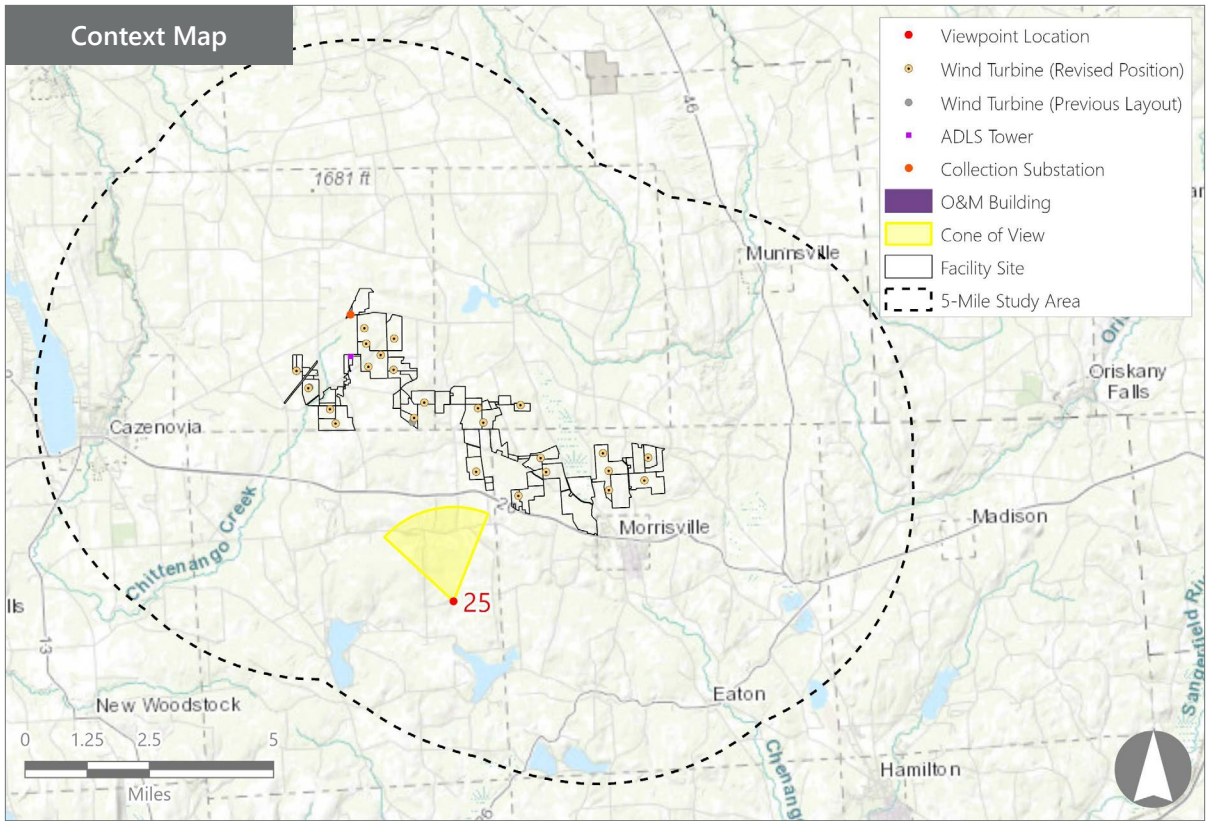
Printed Size: 10" x 15"

Viewing Distance:** 21"

NOTES

*Distance as measured from the viewpoint to the closest wind turbine generator within the simulated photograph's field of view

**The simulation is at the correct perspective when printed on an 11 inch by 17 inch sheet at full scale, and viewed approximately 21 inches from the eye of the viewer.



Hoffman Falls Wind Project

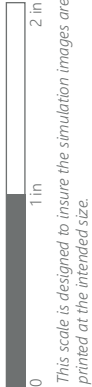
Towns of Eaton, Fenner, Nelson, and Smithfield, Madison County, New York

Visual Impact Assessment Addendum
Appendix 8-A



EXISTING VIEW

Note: Printed at actual size, the existing view image is 15 inches wide by 10 inches high. At this size and focal length, the existing view image should be viewed from a distance 21 inches from the eye of the viewer.



VIEWPOINT 25
Stoney Pond State Forest

Hoffman Falls Wind Project
Towns of Eaton, Fenner, Nelson, and Smithfield, Madison County, New York



WIREFRAME RENDERING



Hoffman Falls Wind Project

Towns of Eaton, Fenner, Nelson, and Smithfield, Madison County, New York



VIEWPOINT 25
Stoney Pond State Forest



This scale is designed to insure the simulation images are printed at the intended size.

Note: Printed at actual size, the resulting simulation image is 15 inches wide by 10 inches high. At this size and focal length, the simulation should be viewed from a distance 21 inches from the eye of the viewer.

REVISED WIREFRAME RENDERING



Note: Printed at actual size, the resulting simulation image is 15 inches wide by 10 inches high. At this size and focal length, the simulation should be viewed from a distance 21 inches from the eye of the viewer.

Hoffman Falls Wind Project

Towns of Eaton, Fenner, Nelson, and Smithfield, Madison County, New York



VIEWPOINT 25

Stoney Pond State Forest

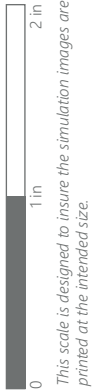


This scale is designed to insure the simulation images are printed at the intended size.

EXISTING VIEW



Note: Printed at actual size, the existing view image is 15 inches wide by 10 inches high. At this size and focal length, the existing view image should be viewed from a distance 21 inches from the eye of the viewer.



VIEWPOINT 25
Stoney Pond State Forest

Hoffman Falls Wind Project
Towns of Eaton, Fenner, Nelson, and Smithfield, Madison County, New York



WIREFRAME RENDERING



Note: Printed at actual size, the resulting wireframe rendering image is 15 inches wide by 10 inches high. At this size and focal length, the simulation should be viewed from a distance 21 inches from the eye of the viewer.



VIEWPOINT 25
Stoney Pond State Forest

Hoffman Falls Wind Project
Towns of Eaton, Fenner, Nelson, and Smithfield, Madison County, New York



REVISED WIREFRAME RENDERING



Note: Printed at actual size, the resulting wireframe rendering image is 15 inches wide by 10 inches high. At this size and focal length, the simulation should be viewed from a distance 21 inches from the eye of the viewer.



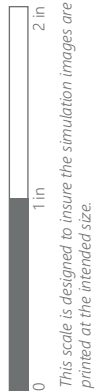
VIEWPOINT 25
Stoney Pond State Forest

Hoffman Falls Wind Project
Towns of Eaton, Fenner, Nelson, and Smithfield, Madison County, New York





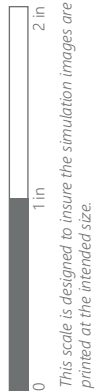
VIEWPOINT 25
Stoney Pond State Forest

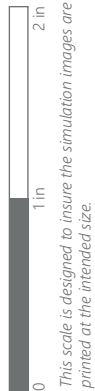


This scale is designed to insure the simulation images are printed at the intended size.

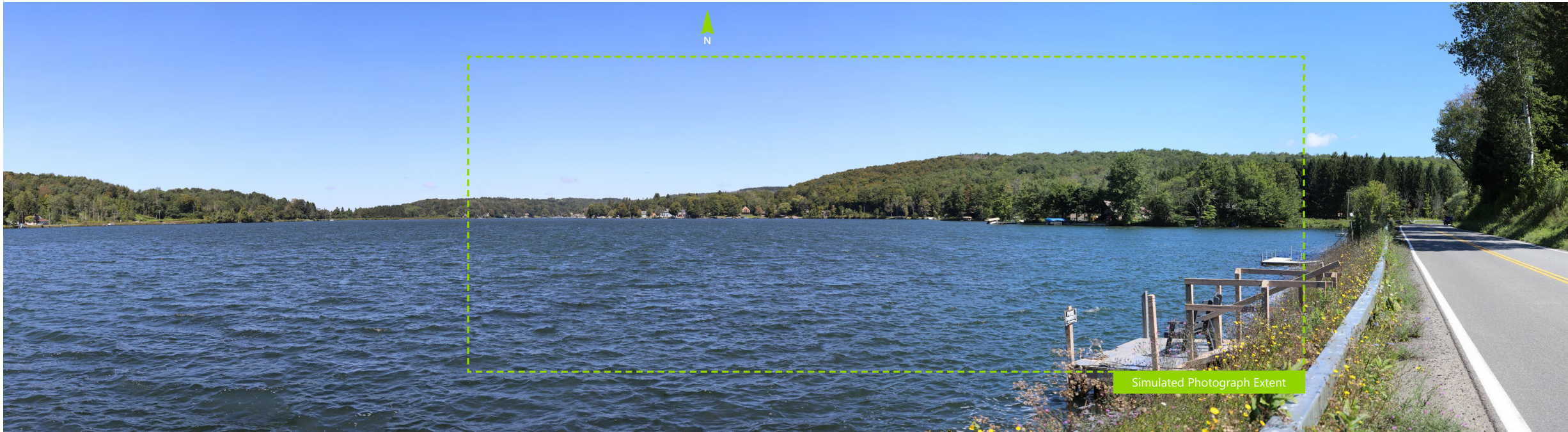


VIEWPOINT 25
Stoney Pond State Forest





VIEWPOINT 25
Stoney Pond State Forest



Note: The image above is a panorama photograph taken from Tuscarora Road in the Town of Nelson panning clockwise from northwest (left) to northeast (right). The green rectangle represents the extent of the simulated photograph.

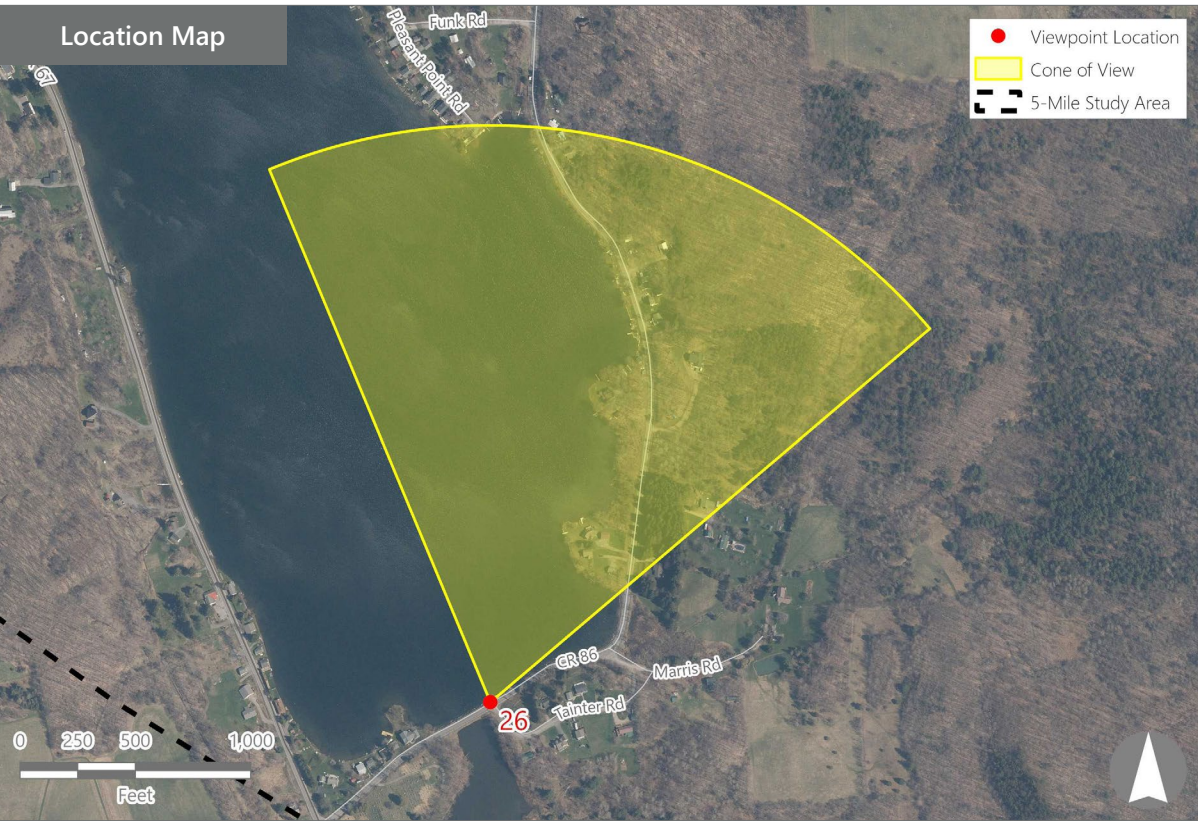
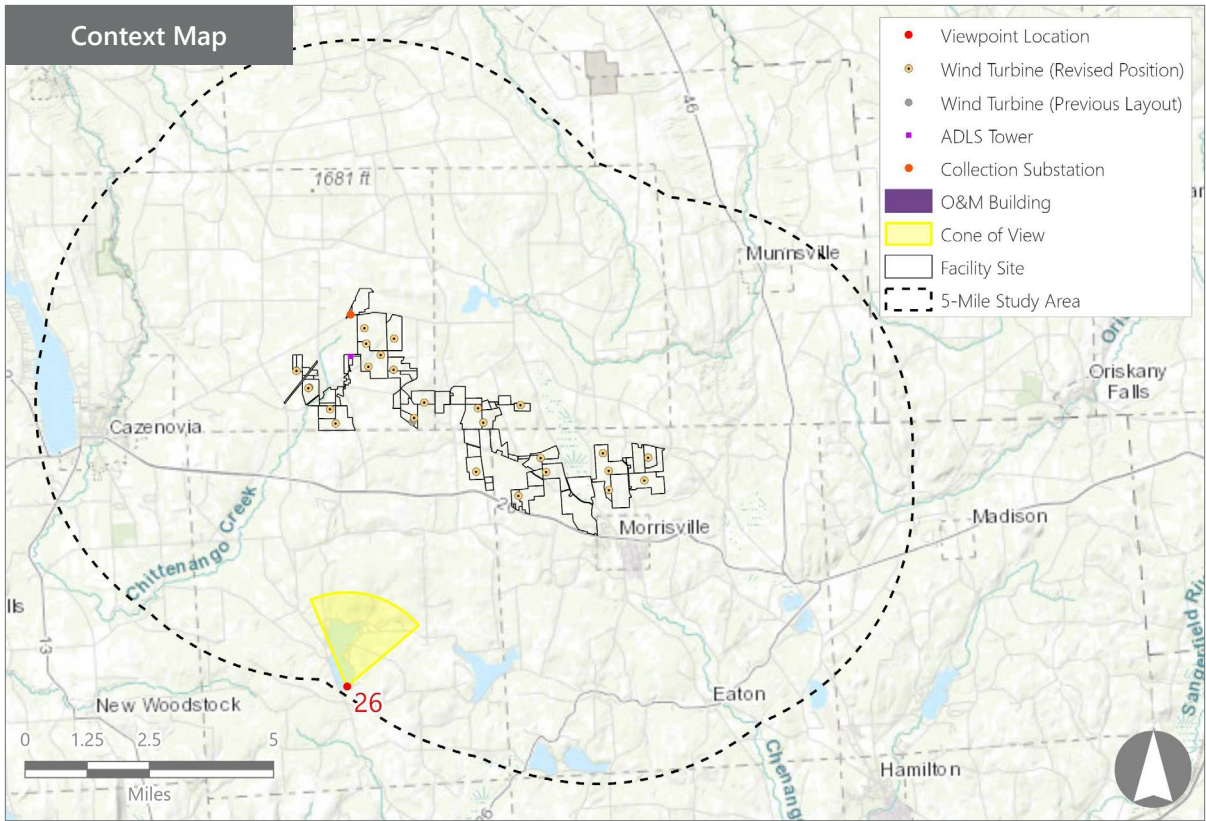
VIEWPOINT 26
Tuscarora Road

VIEWPOINT INFORMATION

Location: Tuscarora Road
Town: Nelson
County: Madison
Latitude: 42.85672° N
Longitude: 75.75474° W

LOCATION INFORMATION

Distance Zone Represented in View: Background
Viewer Distance*: 5.0 miles
Landscape Similarity Zone: Water
Viewer/User Group(s): Local Residents, Through-Travelers, Tourists/Recreational Users
Visually Sensitive Resource(s): Tuscarora Lake



PHOTOGRAPH INFORMATION

Date: August 31, 2023
Time: 12:03 PM
Camera: Canon EOS 5D Mark IV
Resolution: 24 Megapixels
Lens Focal Length (35mm equivalent): 50 mm
Camera Elevation: 15,18 feet
Field of View: 39 degrees
Direction of View: North-northeast
Printed Size: 10" x 15"
Viewing Distance:** 21"

NOTES

*Distance as measured from the viewpoint to the closest wind turbine generator within the simulated photograph's field of view

**The simulation is at the correct perspective when printed on an 11 inch by 17 inch sheet at full scale, and viewed approximately 21 inches from the eye of the viewer.

Hoffman Falls Wind Project
Towns of Eaton, Fenner, Nelson, and Smithfield, Madison County, New York

EXISTING VIEW



Note: Printed at actual size, the existing view image is 15 inches wide by 10 inches high. At this size and focal length, the existing view image should be viewed from a distance 21 inches from the eye of the viewer.

0

1 in

2 in

This scale is designed to insure the simulation images are printed at the intended size.

VIEWPOINT 26
Tuscarora Road

Hoffman Falls Wind Project
Towns of Eaton, Fenner, Nelson, and Smithfield, Madison County, New York



WIREFRAME RENDERING



Note: Printed at actual size, the resulting simulation image is 15 inches wide by 10 inches high. At this size and focal length, the simulation should be viewed from a distance 21 inches from the eye of the viewer.