

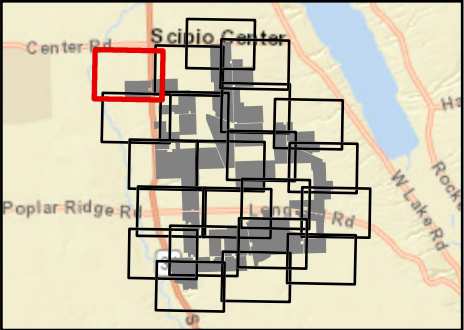
Agricola Wind Project

Towns of Venice and Scipio,
Cayuga County, New York

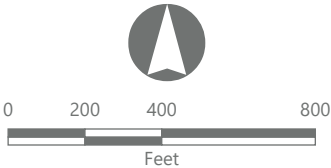
Article VIII Permit Application
Matter No. 23-00064

- Active Agricultural Land
- Temporary Impact During Operation**
- Temporary Impact During Construction***
- Mineral Soil Group
 - Group 2
 - Group 3
- Facility Components
 - Wind Turbine
 - Limit of Grading
 - Limit of Impervious Surface
 - Limit of Disturbance
 - Facility Site

Note:
*Areas impacted by the Facility that will be permanently taken out of agricultural production.
**Areas impacted by the Facility that will be temporarily taken out of agricultural production during construction and operations.
***Areas impacted by the Facility that will be temporarily taken out of agricultural production until the end of the construction period, at which point they will be restored and returned to agricultural use.

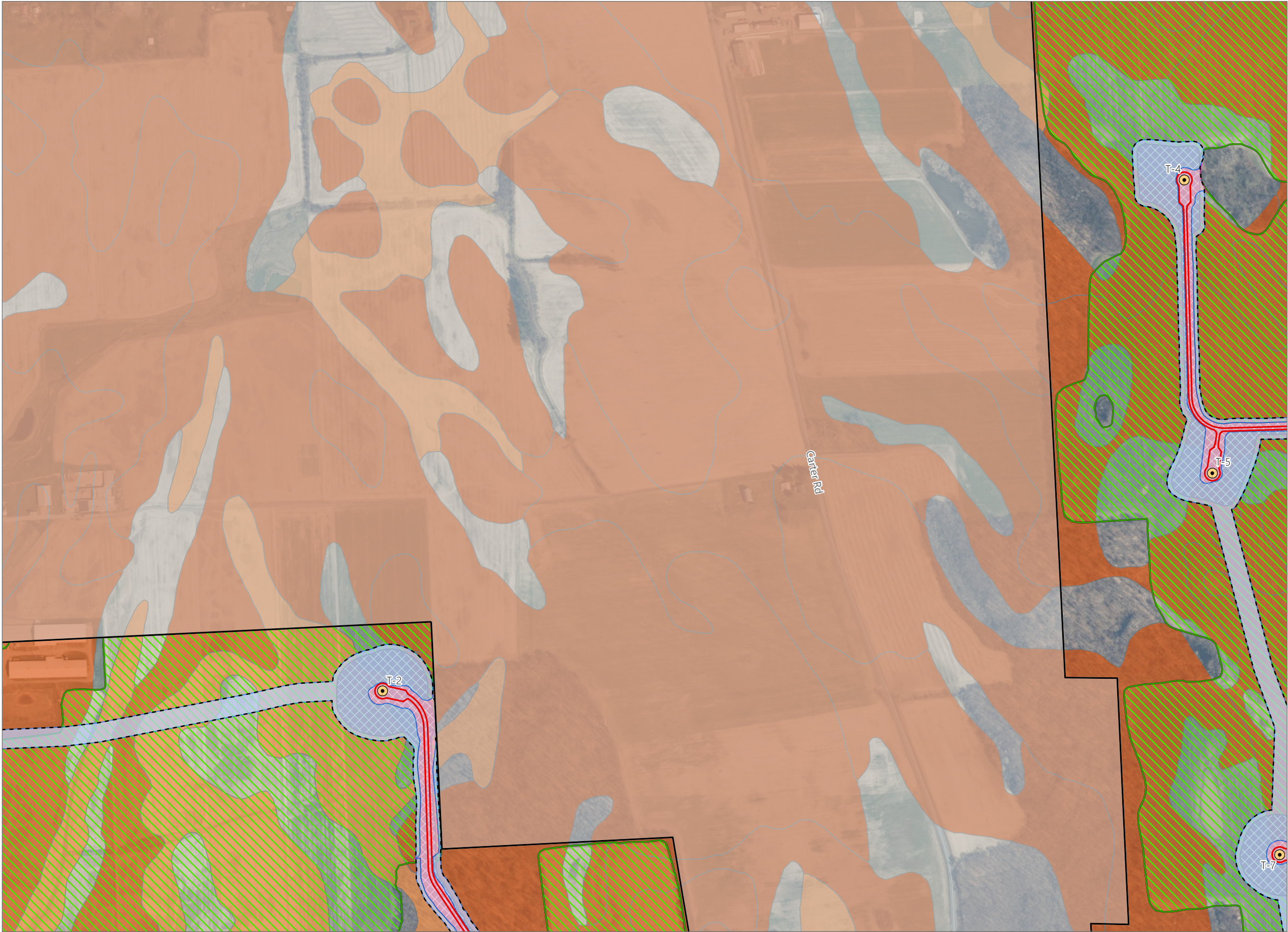


Sheet 1 of 22



Prepared November 4, 2024
Basemap: NYSDOP "2023" orthoimagery map service

Figure 15-6. Impacts to Agricultural Land



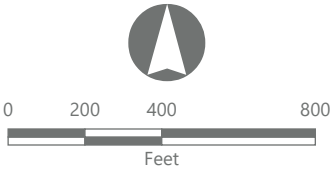
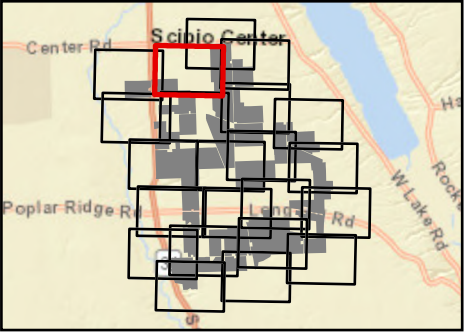
Agricola Wind Project

Towns of Venice and Scipio,
Cayuga County, New York

**Article VIII Permit Application
Matter No. 23-00064**

- Active Agricultural Land
- Temporary Impact During Operation**
- Temporary Impact During Construction***
- Mineral Soil Group
 - Group 2
 - Group 3
- Facility Components
 - Wind Turbine
 - Limit of Grading
 - Limit of Impervious Surface
 - Limit of Disturbance
 - Facility Site

Note:
*Areas impacted by the Facility that will be permanently taken out of agricultural production.
**Areas impacted by the Facility that will be temporarily taken out of agricultural production during construction and operations.
***Areas impacted by the Facility that will be temporarily taken out of agricultural production until the end of the construction period, at which point they will be restored and returned to agricultural use.



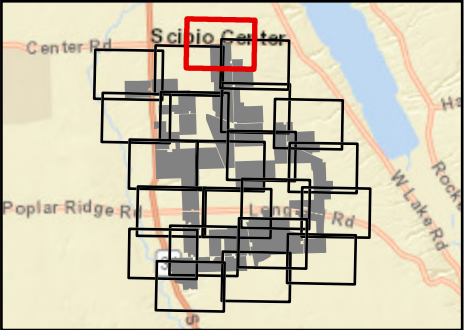
Agricola Wind Project

Towns of Venice and Scipio,
Cayuga County, New York

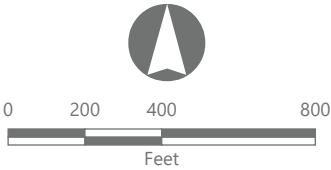
Article VIII Permit Application
Matter No. 23-00064

- Active Agricultural Land
- Temporary Impact During Operation**
- Temporary Impact During Construction***
- Mineral Soil Group
 - Group 2
 - Group 3
- Facility Components
 - Wind Turbine
 - Limit of Grading
 - Limit of Impervious Surface
 - Limit of Disturbance
 - Facility Site

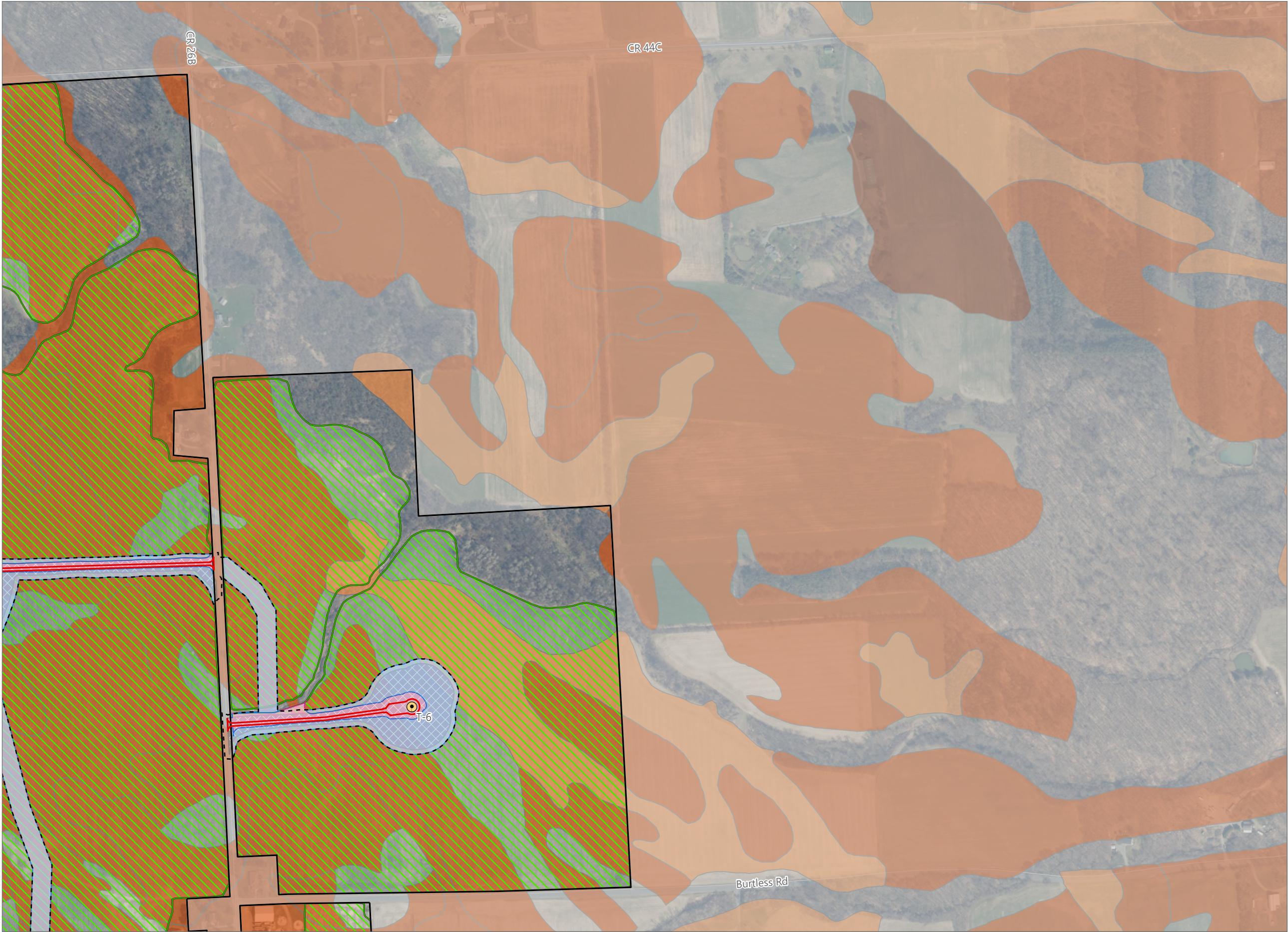
Note:
*Areas impacted by the Facility that will be permanently taken out of agricultural production.
**Areas impacted by the Facility that will be temporarily taken out of agricultural production during construction and operations.
***Areas impacted by the Facility that will be temporarily taken out of agricultural production until the end of the construction period, at which point they will be restored and returned to agricultural use.



Sheet 3 of 22



Prepared November 4, 2024
Basemap: NYSDOP "2023" orthoimagery map service



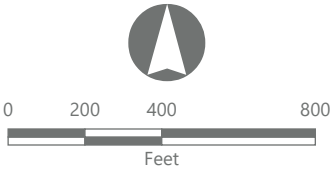
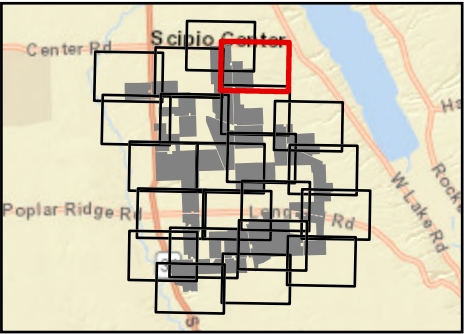
Agricola Wind Project

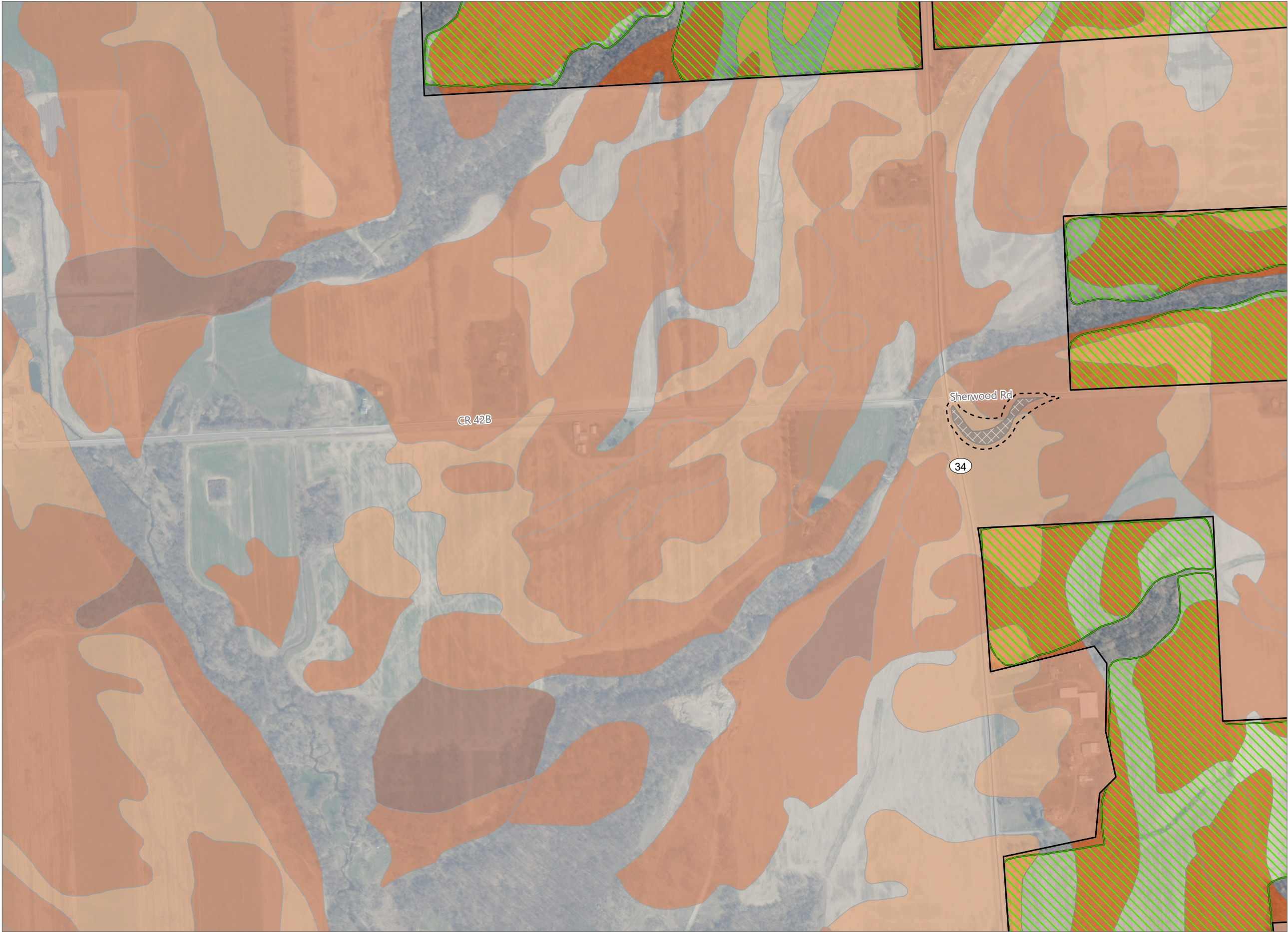
Towns of Venice and Scipio,
Cayuga County, New York

**Article VIII Permit Application
Matter No. 23-00064**

- Active Agricultural Land
- Temporary Impact During Operation**
- Temporary Impact During Construction***
- Mineral Soil Group
 - Group 1
 - Group 2
 - Group 3
- Facility Components
 - Wind Turbine
 - Limit of Grading
 - Limit of Impervious Surface
 - Limit of Disturbance
 - Facility Site

Note:
*Areas impacted by the Facility that will be permanently taken out of agricultural production.
**Areas impacted by the Facility that will be temporarily taken out of agricultural production during construction and operations.
***Areas impacted by the Facility that will be temporarily taken out of agricultural production until the end of the construction period, at which point they will be restored and returned to agricultural use.





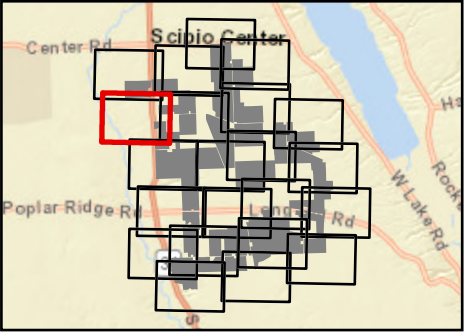
Agricola Wind Project

Towns of Venice and Scipio,
Cayuga County, New York

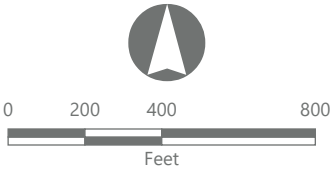
Article VIII Permit Application
Matter No. 23-00064

- Active Agricultural Land
- Mineral Soil Group
 - Group 1
 - Group 2
 - Group 3
- Limit of Grading
- Facility Components
 - Limit of Disturbance
 - Facility Site

Note:
*Areas impacted by the Facility that will be permanently taken out of agricultural production.
**Areas impacted by the Facility that will be temporarily taken out of agricultural production during construction and operations.
***Areas impacted by the Facility that will be temporarily taken out of agricultural production until the end of the construction period, at which point they will be restored and returned to agricultural use.

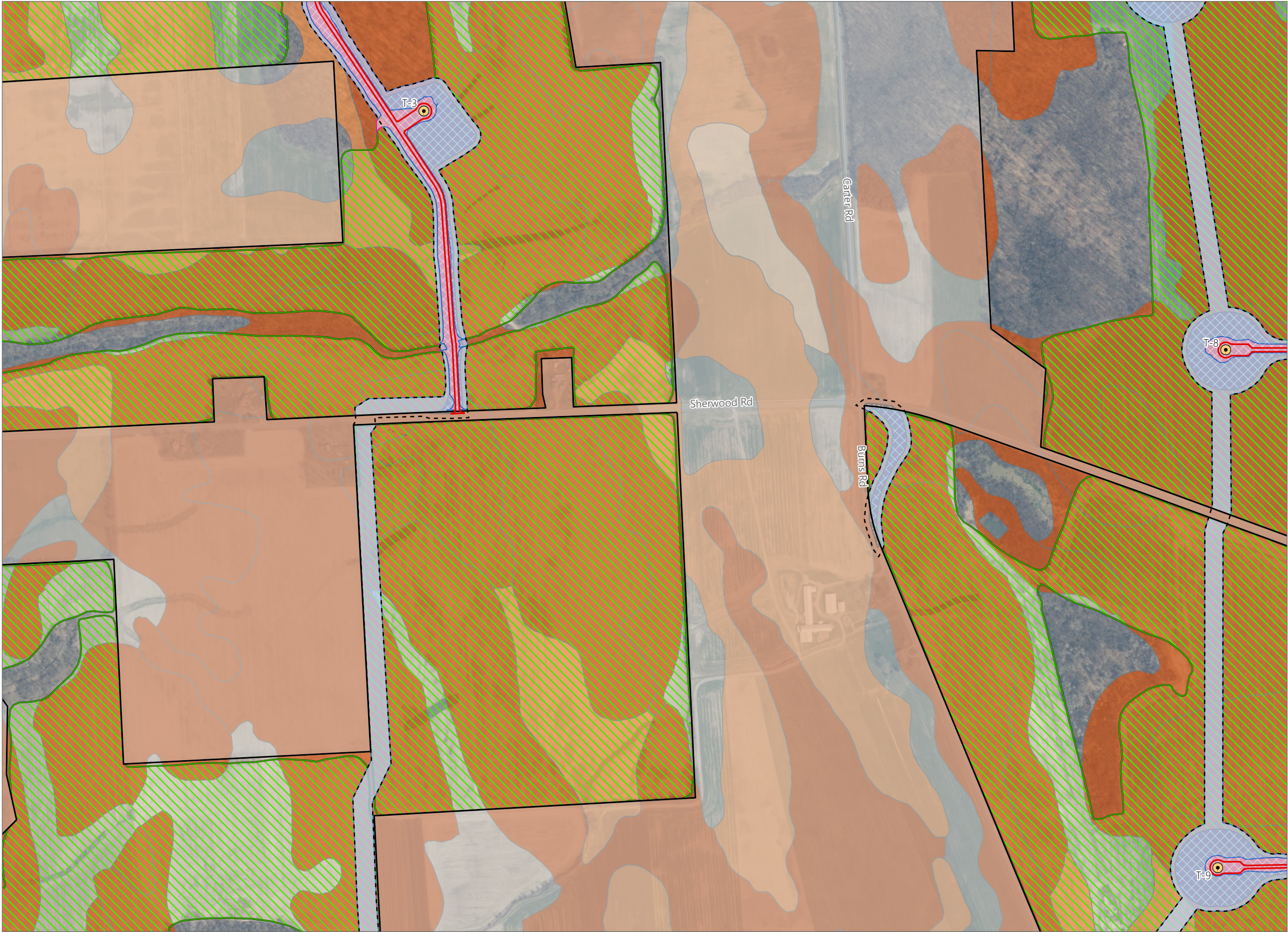


Sheet 5 of 22



Prepared November 4, 2024
Basemap: NYSDOP "2023" orthoimagery map service

Figure 15-6. Impacts to Agricultural Land



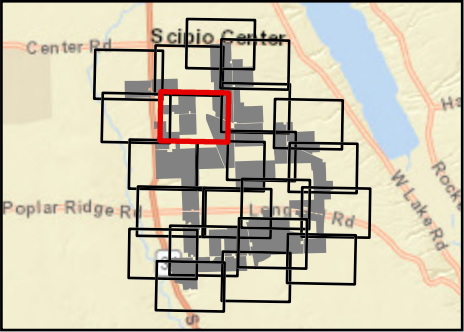
Agricola Wind Project

Towns of Venice and Scipio,
Cayuga County, New York

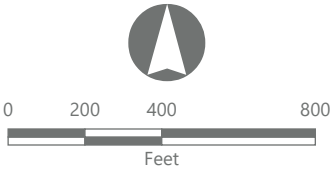
Article VIII Permit Application
Matter No. 23-00064

- Active Agricultural Land
- Temporary Impact During Operation**
- Temporary Impact During Construction***
- Mineral Soil Group
 - Group 2
 - Group 3
 - Group 4
- Facility Components
 - Wind Turbine
 - Limit of Grading
 - Limit of Impervious Surface
 - Limit of Disturbance
 - Facility Site

Note:
*Areas impacted by the Facility that will be permanently taken out of agricultural production.
**Areas impacted by the Facility that will be temporarily taken out of agricultural production during construction and operations.
***Areas impacted by the Facility that will be temporarily taken out of agricultural production until the end of the construction period, at which point they will be restored and returned to agricultural use.

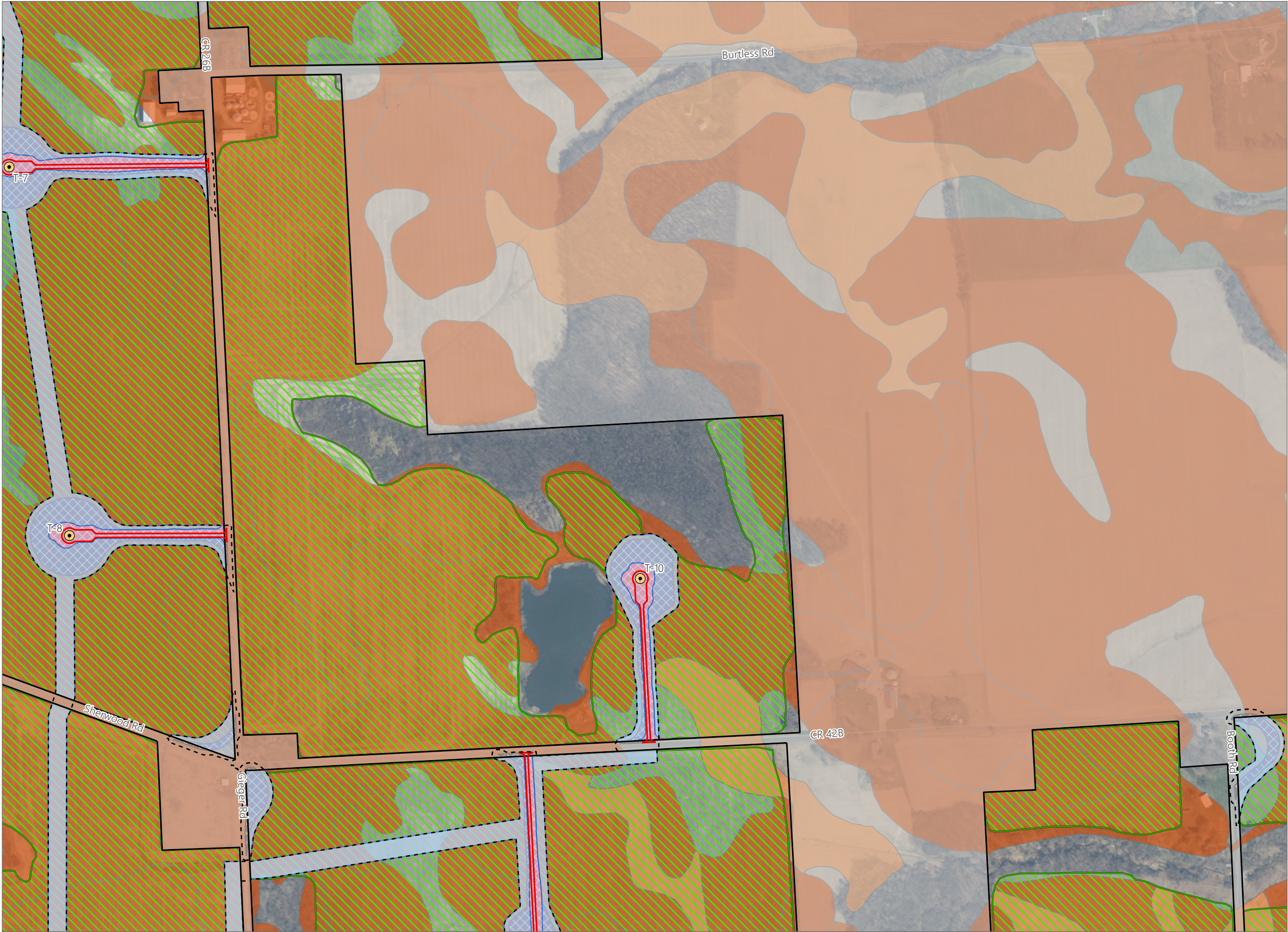


Sheet 6 of 22



Prepared November 4, 2024
Basemap: NYSDOP "2023" orthoimagery map service

Figure 15-6. Impacts to Agricultural Land



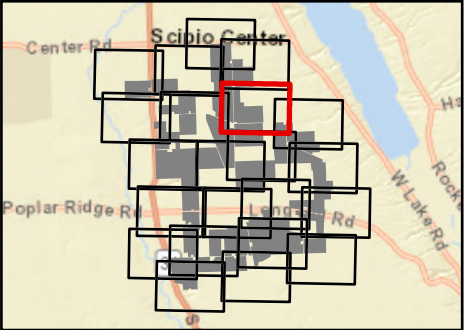
Agricola Wind Project

Towns of Venice and Scipio,
Cayuga County, New York

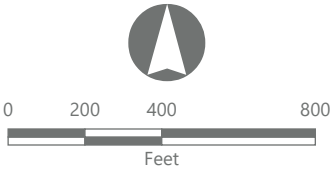
**Article VIII Permit Application
Matter No. 23-00064**

- Active Agricultural Land
- Temporary Impact During Operation**
- Temporary Impact During Construction***
- Mineral Soil Group
 - Group 2
 - Group 3
- Facility Components
 - Wind Turbine
 - Limit of Grading
 - Limit of Impervious Surface
 - Limit of Disturbance
 - Facility Site

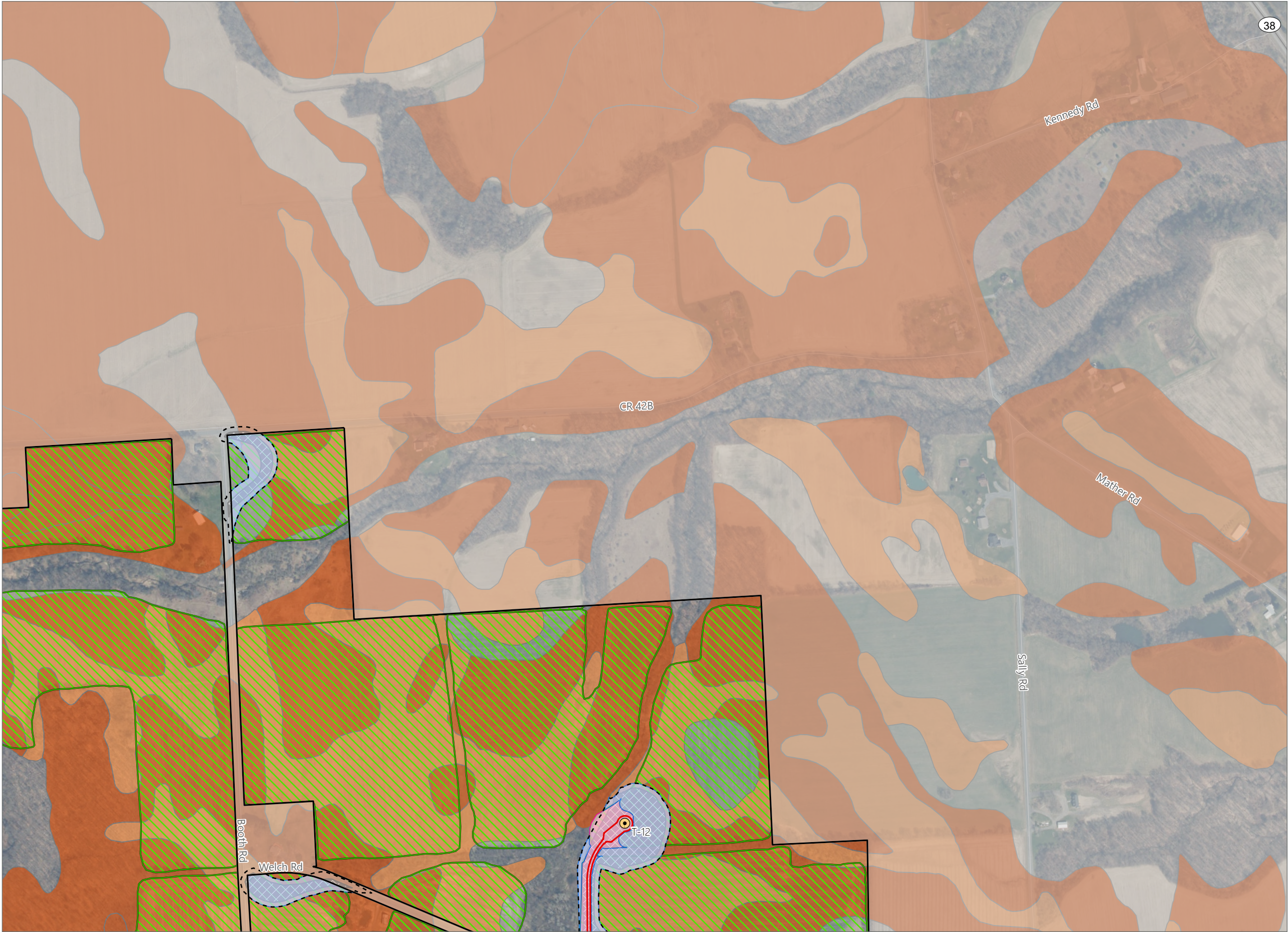
Note:
*Areas impacted by the Facility that will be permanently taken out of agricultural production.
**Areas impacted by the Facility that will be temporarily taken out of agricultural production during construction and operations.
***Areas impacted by the Facility that will be temporarily taken out of agricultural production until the end of the construction period, at which point they will be restored and returned to agricultural use.



Sheet 7 of 22



Prepared November 4, 2024
Basemap: NYSDOP "2023" orthoimagery map service



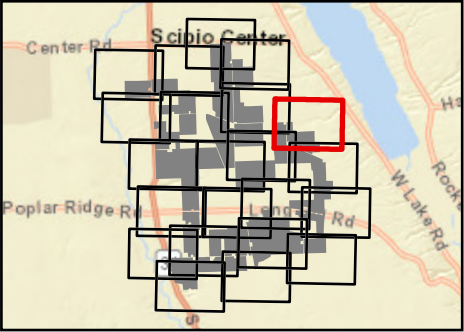
Agricola Wind Project

Towns of Venice and Scipio,
Cayuga County, New York

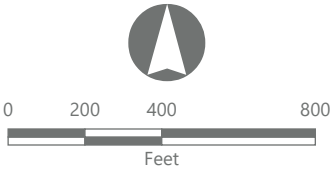
Article VIII Permit Application
Matter No. 23-00064

- Active Agricultural Land
- Temporary Impact During Operation**
- Temporary Impact During Construction***
- Mineral Soil Group
 - Group 2
 - Group 3
- Facility Components
 - Wind Turbine
 - Limit of Grading
 - Limit of Impervious Surface
 - Limit of Disturbance
 - Facility Site

Note:
*Areas impacted by the Facility that will be permanently taken out of agricultural production.
**Areas impacted by the Facility that will be temporarily taken out of agricultural production during construction and operations.
***Areas impacted by the Facility that will be temporarily taken out of agricultural production until the end of the construction period, at which point they will be restored and returned to agricultural use.

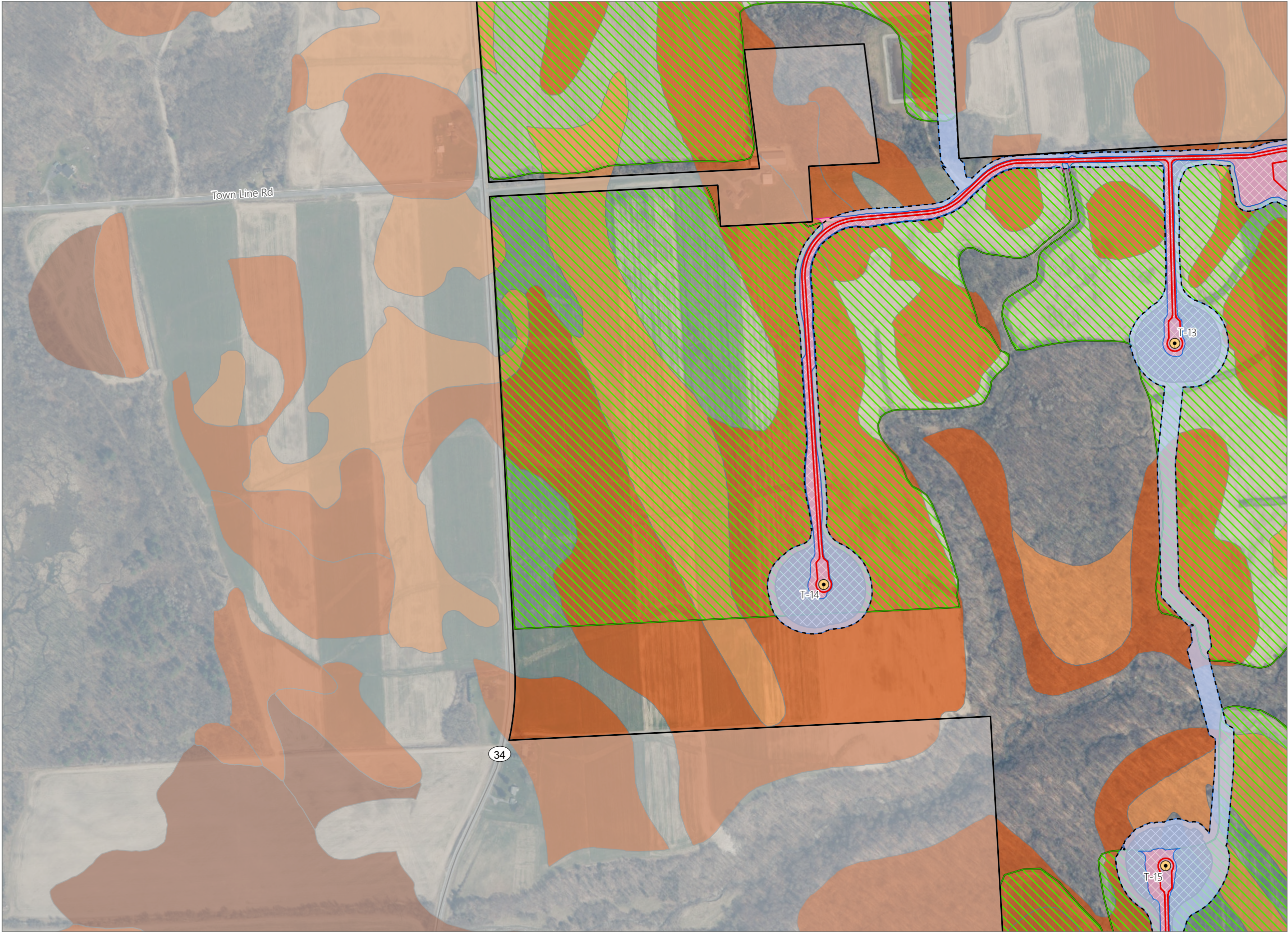


Sheet 8 of 22



Prepared November 4, 2024
Basemap: NYSDOP "2023" orthoimagery map service

Figure 15-6. Impacts to Agricultural Land



Agricola Wind Project

Towns of Venice and Scipio,
Cayuga County, New York

**Article VIII Permit Application
Matter No. 23-00064**

- Active Agricultural Land
- Temporary Impact During Operation**
- Temporary Impact During Construction***
- Mineral Soil Group
 - Group 1
 - Group 2
 - Group 3
- Facility Components
 - Wind Turbine
 - Limit of Grading
 - Limit of Impervious Surface
 - Limit of Disturbance
 - Facility Site

Note:
*Areas impacted by the Facility that will be permanently taken out of agricultural production.
**Areas impacted by the Facility that will be temporarily taken out of agricultural production during construction and operations.
***Areas impacted by the Facility that will be temporarily taken out of agricultural production until the end of the construction period, at which point they will be restored and returned to agricultural use.

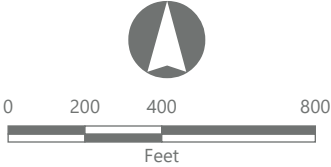
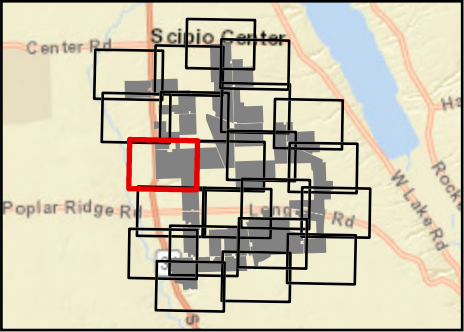
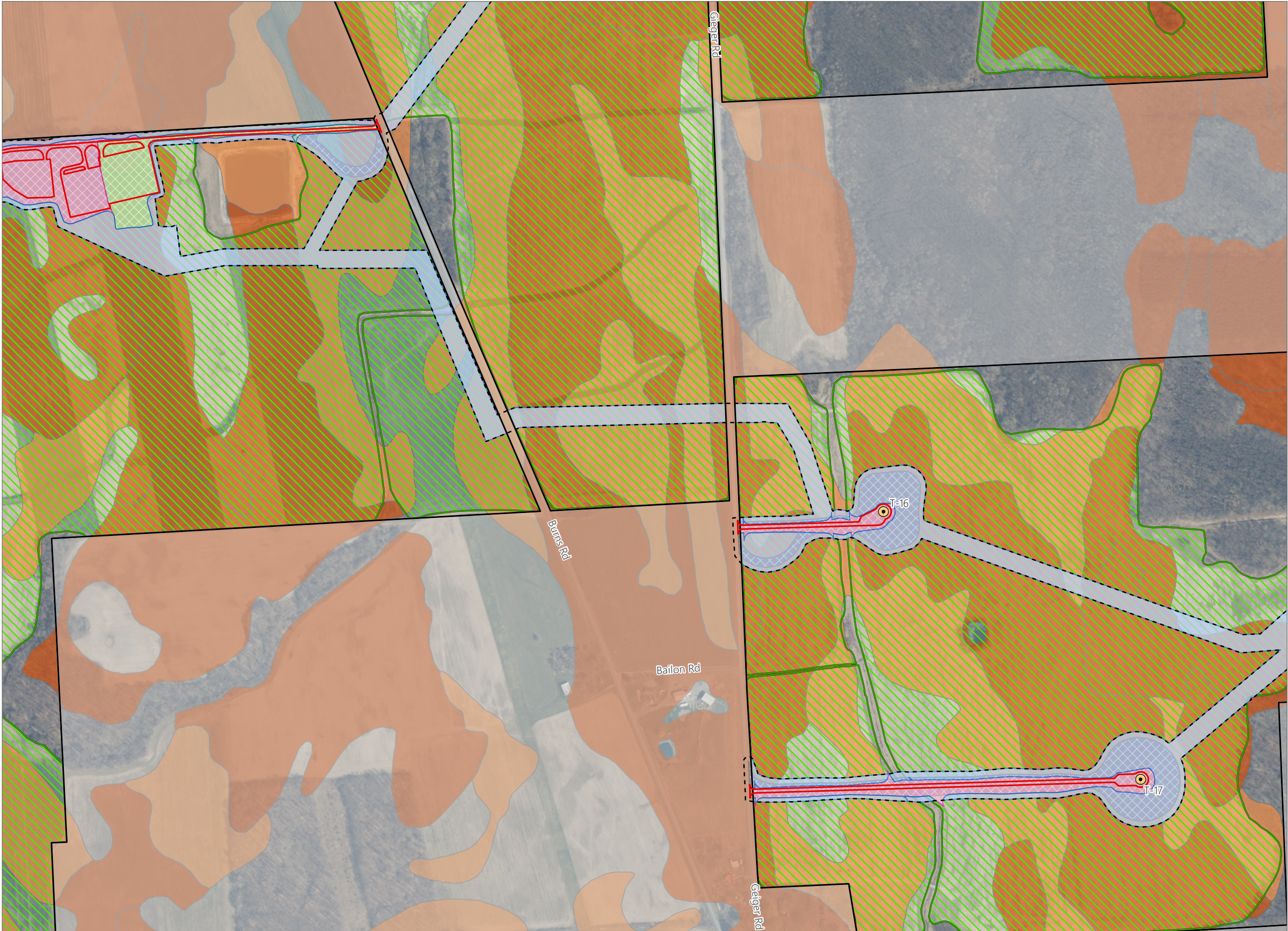


Figure 15-6. Impacts to Agricultural Land



Agricola Wind Project

Towns of Venice and Scipio,
Cayuga County, New York

Article VIII Permit Application
Matter No. 23-00064

- Active Agricultural Land
- Permanent Impact*
- Temporary Impact During Operation**
- Temporary Impact During Construction***
- Mineral Soil Group
 - Group 2
 - Group 3
- Facility Components
 - Wind Turbine
 - Limit of Grading
 - Limit of Impervious Surface
 - Limit of Disturbance
 - Facility Site

Note:
*Areas impacted by the Facility that will be permanently taken out of agricultural production.
**Areas impacted by the Facility that will be temporarily taken out of agricultural production during construction and operations.
***Areas impacted by the Facility that will be temporarily taken out of agricultural production until the end of the construction period, at which point they will be restored and returned to agricultural use.

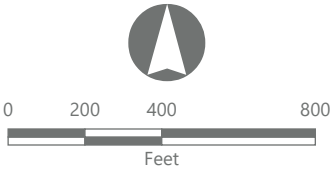
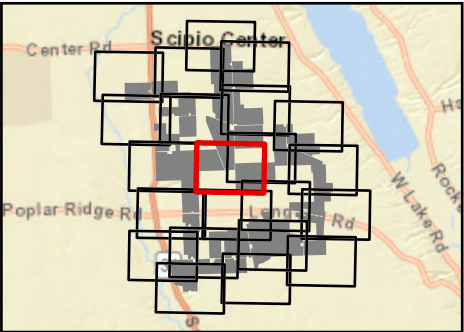
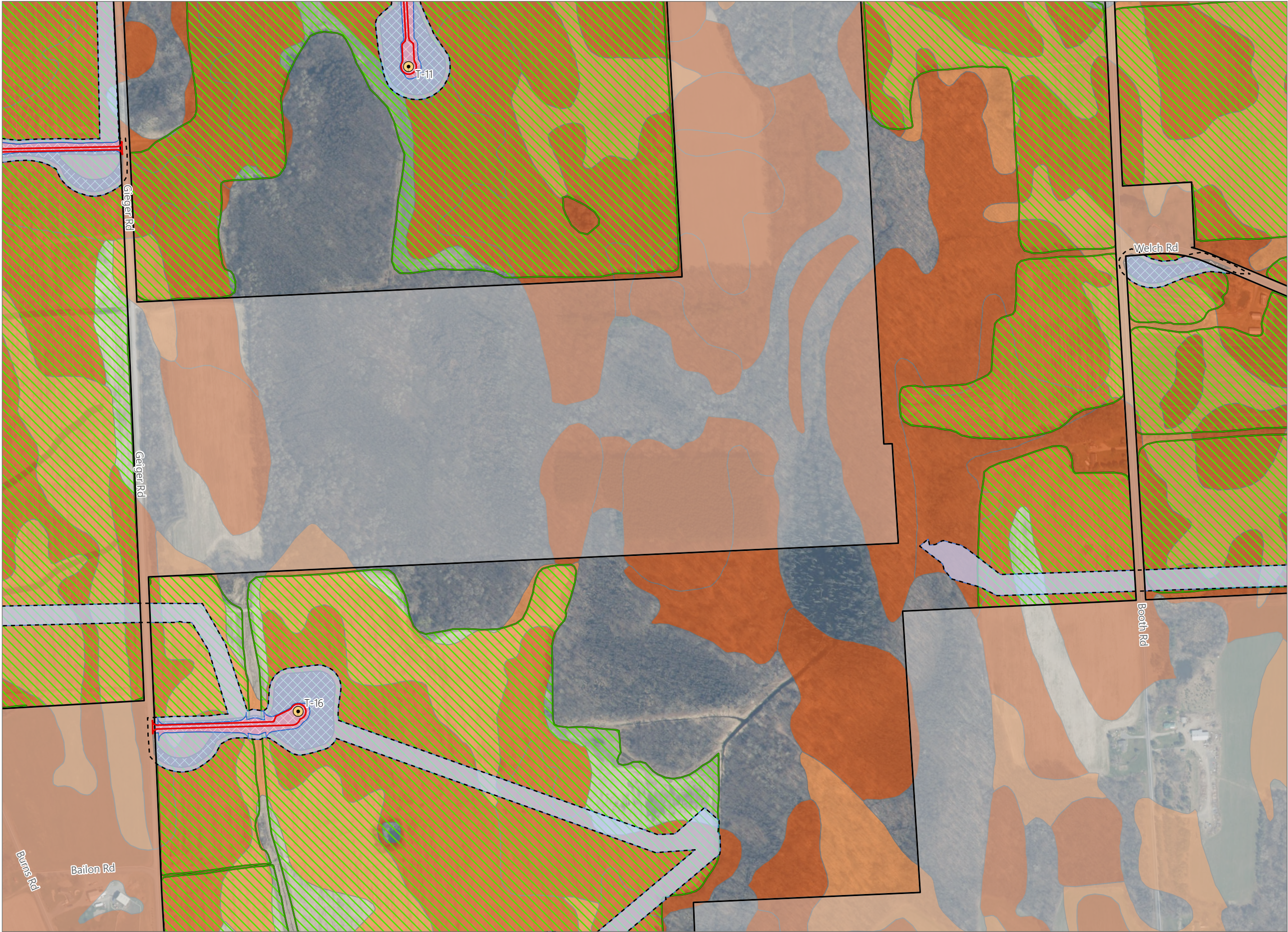


Figure 15-6. Impacts to Agricultural Land



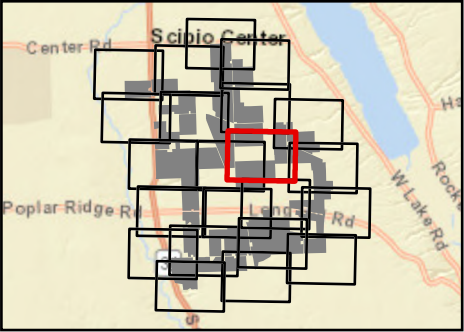
Agricola Wind Project

Towns of Venice and Scipio,
Cayuga County, New York

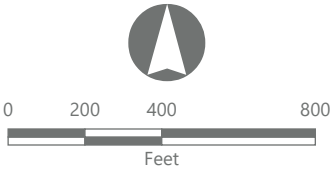
**Article VIII Permit Application
Matter No. 23-00064**

- Active Agricultural Land
- Temporary Impact During Operation**
- Temporary Impact During Construction***
- Mineral Soil Group
 - Group 2
 - Group 3
- Facility Components
 - Wind Turbine
 - Limit of Grading
 - Limit of Impervious Surface
 - Limit of Disturbance
 - Facility Site

Note:
*Areas impacted by the Facility that will be permanently taken out of agricultural production.
**Areas impacted by the Facility that will be temporarily taken out of agricultural production during construction and operations.
***Areas impacted by the Facility that will be temporarily taken out of agricultural production until the end of the construction period, at which point they will be restored and returned to agricultural use.

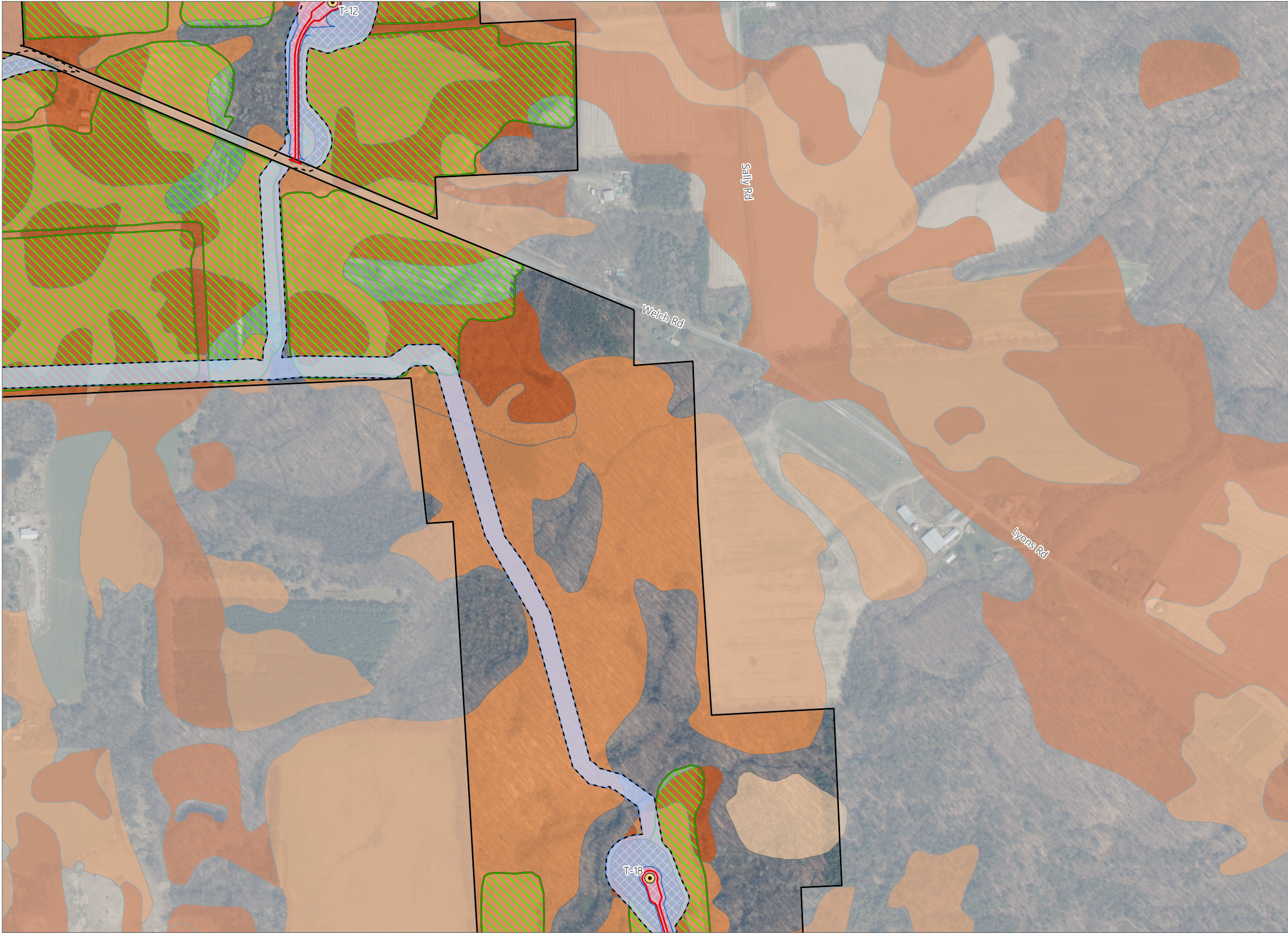


Sheet 11 of 22



Prepared November 4, 2024
Basemap: NYS DOP "2023" orthoimagery map service

Figure 15-6. Impacts to Agricultural Land



Agricola Wind Project

Towns of Venice and Scipio,
Cayuga County, New York

Article VIII Permit Application
Matter No. 23-00064

- Active Agricultural Land
- Temporary Impact During Operation**
- Temporary Impact During Construction***
- Mineral Soil Group
 - Group 2
 - Group 3
 - Group 4
- Facility Components
 - Wind Turbine
 - Limit of Grading
 - Limit of Impervious Surface
 - Limit of Disturbance
 - Facility Site

Note:
*Areas impacted by the Facility that will be permanently taken out of agricultural production.
**Areas impacted by the Facility that will be temporarily taken out of agricultural production during construction and operations.
***Areas impacted by the Facility that will be temporarily taken out of agricultural production until the end of the construction period, at which point they will be restored and returned to agricultural use.

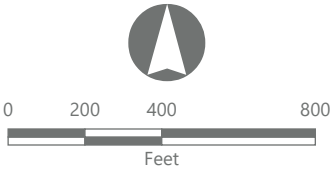
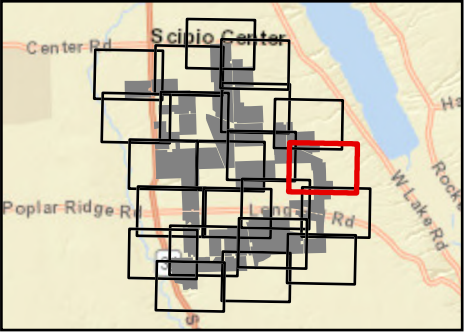


Figure 15-6. Impacts to Agricultural Land



Agricola Wind Project

Towns of Venice and Scipio,
Cayuga County, New York

Article VIII Permit Application
Matter No. 23-00064

- Active Agricultural Land
- Temporary Impact During Operation**
- Temporary Impact During Construction***
- Mineral Soil Group
 - Group 1
 - Group 2
 - Group 3
- Limit of Grading
- Limit of Impervious Surface
- Limit of Disturbance
- Facility Site

Note:
*Areas impacted by the Facility that will be permanently taken out of agricultural production.
**Areas impacted by the Facility that will be temporarily taken out of agricultural production during construction and operations.
***Areas impacted by the Facility that will be temporarily taken out of agricultural production until the end of the construction period, at which point they will be restored and returned to agricultural use.

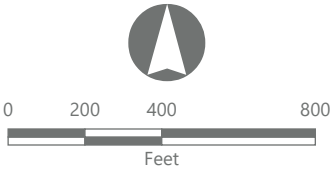
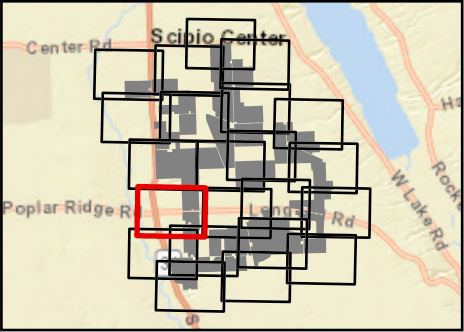
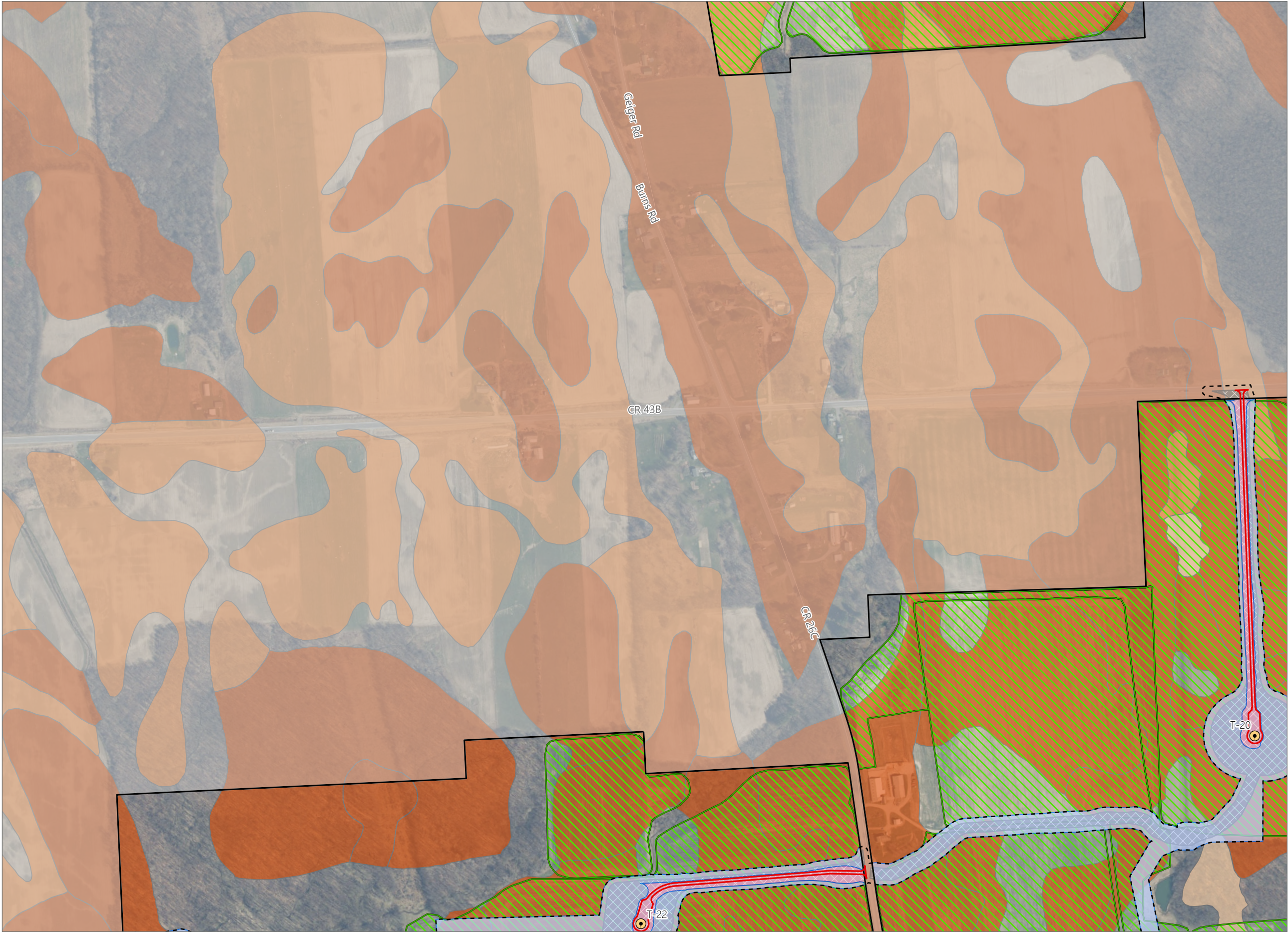


Figure 15-6. Impacts to Agricultural Land



Agricola Wind Project

Towns of Venice and Scipio,
Cayuga County, New York

**Article VIII Permit Application
Matter No. 23-00064**

- Active Agricultural Land
- Temporary Impact During Operation**
- Temporary Impact During Construction***
- Mineral Soil Group
 - Group 2
 - Group 3
 - Group 4
- Facility Components
 - Wind Turbine
 - Limit of Grading
 - Limit of Impervious Surface
 - Limit of Disturbance
 - Facility Site

Note:
*Areas impacted by the Facility that will be permanently taken out of agricultural production.
**Areas impacted by the Facility that will be temporarily taken out of agricultural production during construction and operations.
***Areas impacted by the Facility that will be temporarily taken out of agricultural production until the end of the construction period, at which point they will be restored and returned to agricultural use.

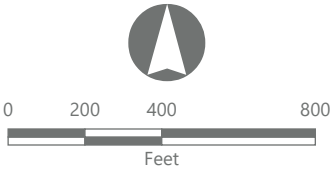
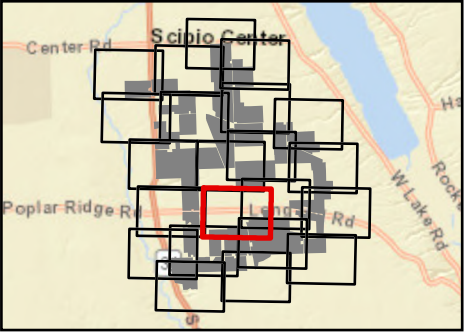
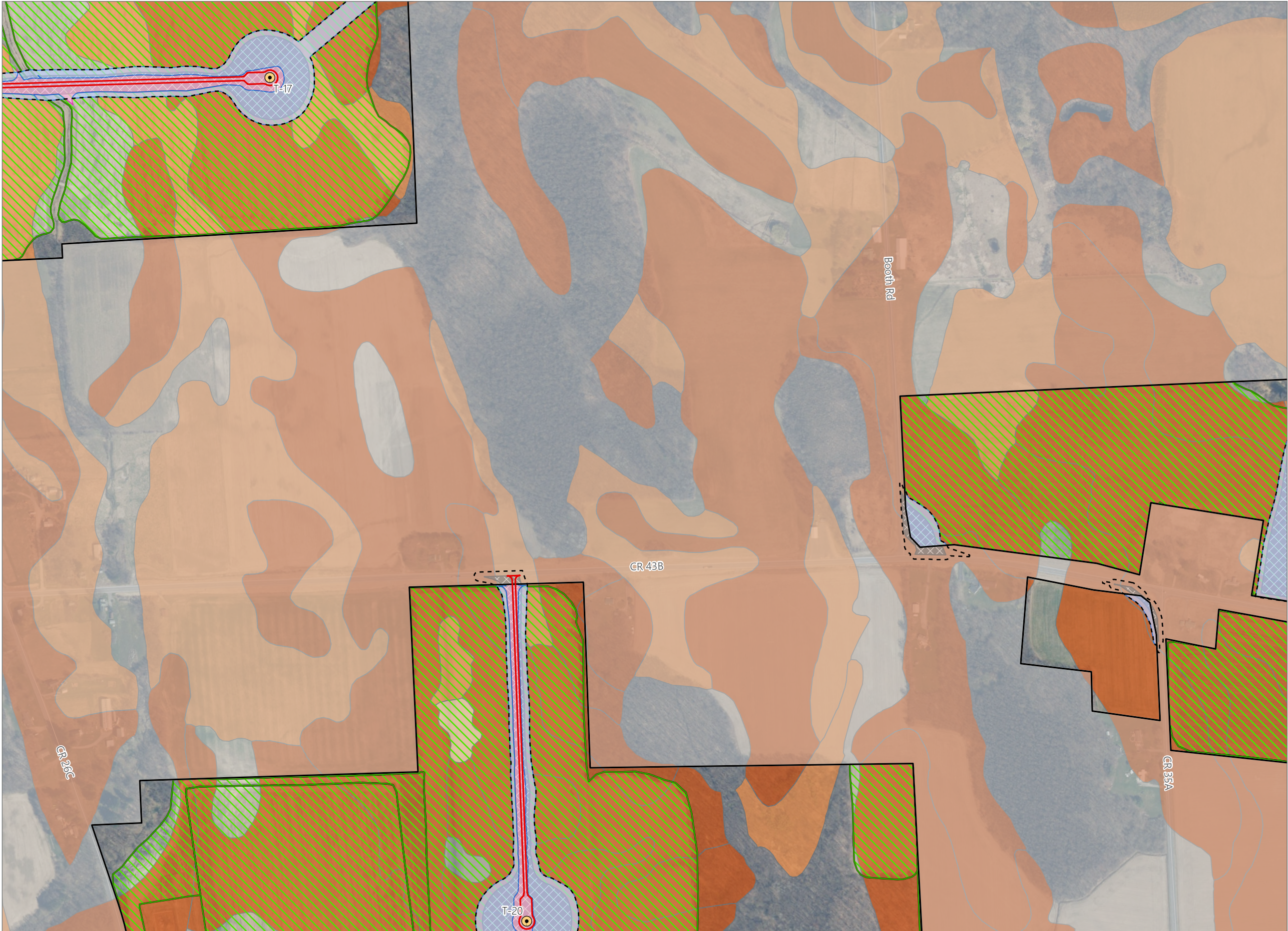


Figure 15-6. Impacts to Agricultural Land



Agricola Wind Project

Towns of Venice and Scipio,
Cayuga County, New York

**Article VIII Permit Application
Matter No. 23-00064**

- Active Agricultural Land
- Temporary Impact During Operation**
- Temporary Impact During Construction***
- Mineral Soil Group
 - Group 2
 - Group 3
 - Group 4
- Facility Components
 - Wind Turbine
 - Limit of Grading
 - Limit of Impervious Surface
 - Limit of Disturbance
 - Facility Site

Note:
*Areas impacted by the Facility that will be permanently taken out of agricultural production.
**Areas impacted by the Facility that will be temporarily taken out of agricultural production during construction and operations.
***Areas impacted by the Facility that will be temporarily taken out of agricultural production until the end of the construction period, at which point they will be restored and returned to agricultural use.

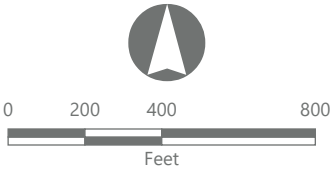
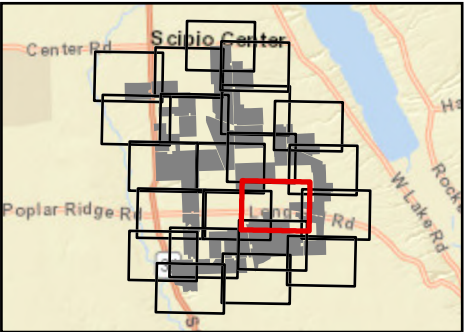


Figure 15-6. Impacts to Agricultural Land



Agricola Wind Project

Towns of Venice and Scipio,
Cayuga County, New York

**Article VIII Permit Application
Matter No. 23-00064**

- Active Agricultural Land
- Temporary Impact During Operation**
- Temporary Impact During Construction***
- Mineral Soil Group
 - Group 2
 - Group 3
 - Group 4
- Facility Components
 - Wind Turbine
 - Limit of Grading
 - Limit of Impervious Surface
 - Limit of Disturbance
 - Facility Site

Note:
*Areas impacted by the Facility that will be permanently taken out of agricultural production.
**Areas impacted by the Facility that will be temporarily taken out of agricultural production during construction and operations.
***Areas impacted by the Facility that will be temporarily taken out of agricultural production until the end of the construction period, at which point they will be restored and returned to agricultural use.

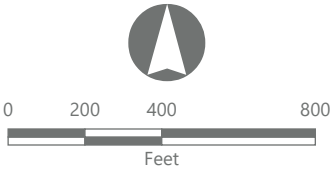
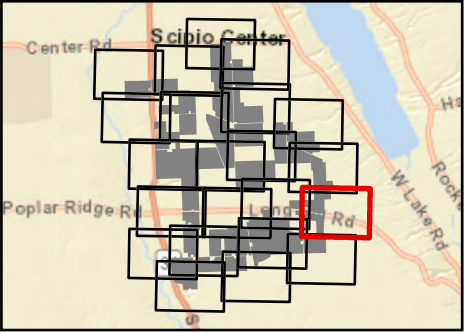


Figure 15-6. Impacts to Agricultural Land



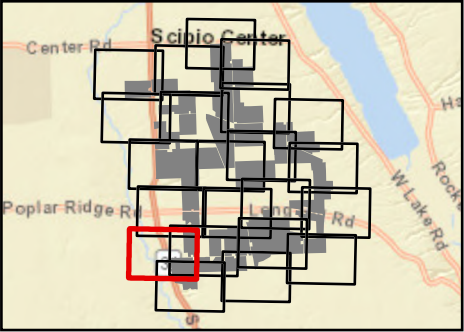
Agricola Wind Project

Towns of Venice and Scipio,
Cayuga County, New York

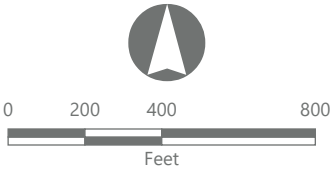
Article VIII Permit Application
Matter No. 23-00064

- Active Agricultural Land
- Temporary Impact During Operation**
- Temporary Impact During Construction***
- Mineral Soil Group
 - Group 1
 - Group 2
 - Group 3
 - Group 4
- Facility Components
 - Wind Turbine
 - Limit of Grading
 - Limit of Impervious Surface
 - Limit of Disturbance
 - Facility Site

Note:
*Areas impacted by the Facility that will be permanently taken out of agricultural production.
**Areas impacted by the Facility that will be temporarily taken out of agricultural production during construction and operations.
***Areas impacted by the Facility that will be temporarily taken out of agricultural production until the end of the construction period, at which point they will be restored and returned to agricultural use.



Sheet 17 of 22



Prepared November 4, 2024
Basemap: NYSDOP "2023" orthoimagery map service

Figure 15-6. Impacts to Agricultural Land



Agricola Wind Project

Towns of Venice and Scipio,
Cayuga County, New York

Article VIII Permit Application
Matter No. 23-00064

- Active Agricultural Land
- Temporary Impact During Operation**
- Temporary Impact During Construction***
- Mineral Soil Group
 - Group 1
 - Group 2
 - Group 3
 - Group 4
- Facility Components
 - Wind Turbine
 - Limit of Grading
 - Limit of Impervious Surface
 - Limit of Disturbance
 - Facility Site

Note:
*Areas impacted by the Facility that will be permanently taken out of agricultural production.
**Areas impacted by the Facility that will be temporarily taken out of agricultural production during construction and operations.
***Areas impacted by the Facility that will be temporarily taken out of agricultural production until the end of the construction period, at which point they will be restored and returned to agricultural use.

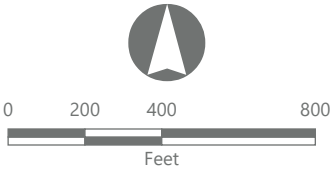
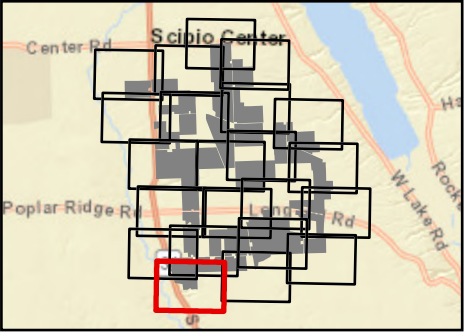
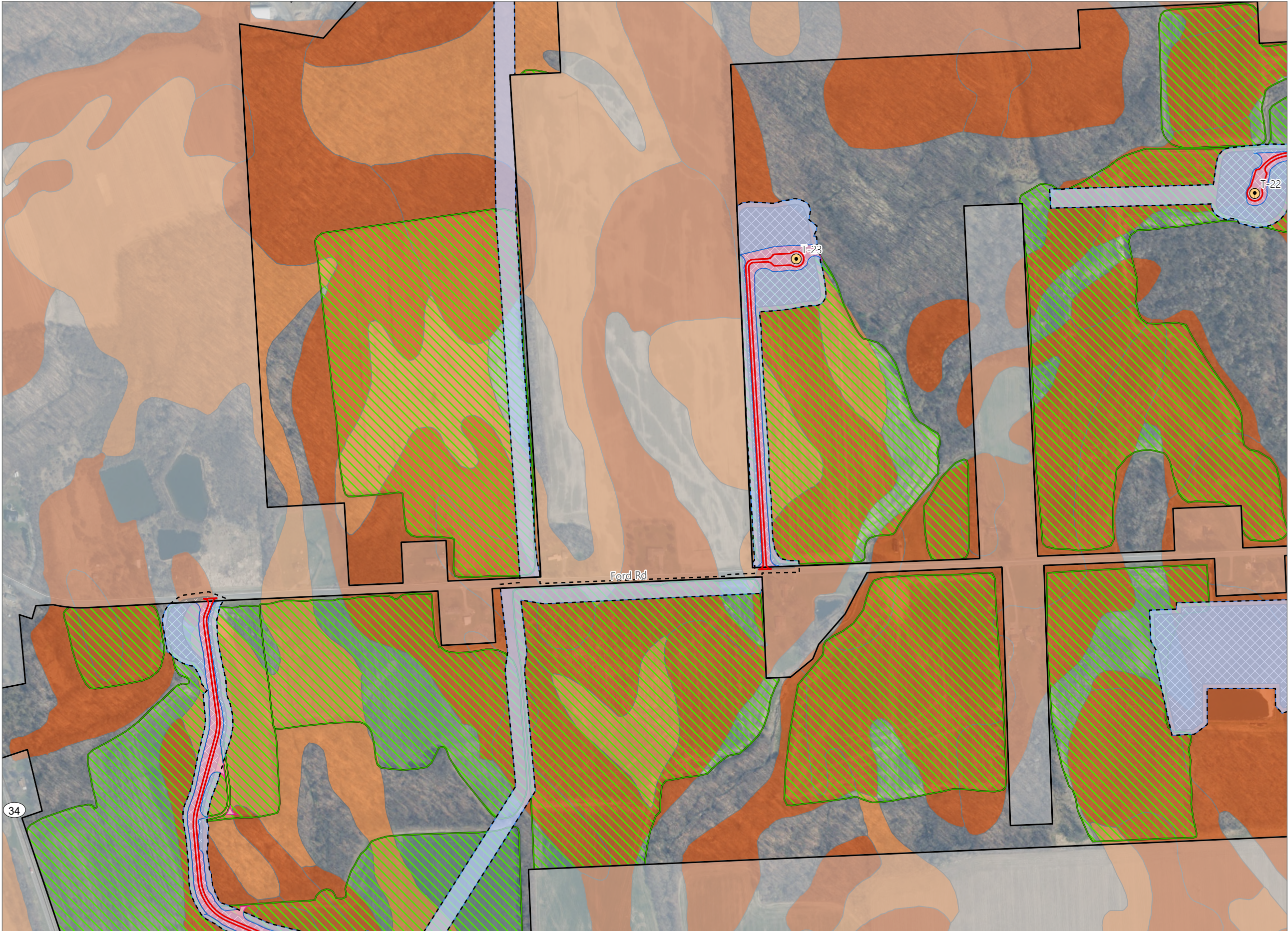


Figure 15-6. Impacts to Agricultural Land



Agricola Wind Project

Towns of Venice and Scipio,
Cayuga County, New York

Article VIII Permit Application
Matter No. 23-00064

- Active Agricultural Land
- Temporary Impact During Operation**
- Temporary Impact During Construction***
- Mineral Soil Group
 - Group 2
 - Group 3
- Facility Components
 - Wind Turbine
 - Limit of Grading
 - Limit of Impervious Surface
 - Limit of Disturbance
 - Facility Site

Note:
*Areas impacted by the Facility that will be permanently taken out of agricultural production.
**Areas impacted by the Facility that will be temporarily taken out of agricultural production during construction and operations.
***Areas impacted by the Facility that will be temporarily taken out of agricultural production until the end of the construction period, at which point they will be restored and returned to agricultural use.

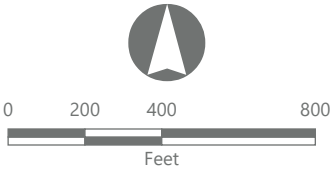
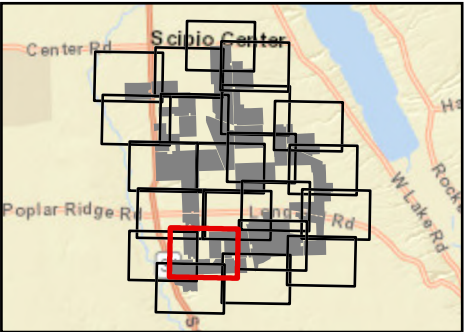


Figure 15-6. Impacts to Agricultural Land



Agricola Wind Project

Towns of Venice and Scipio,
Cayuga County, New York

Article VIII Permit Application
Matter No. 23-00064

- Active Agricultural Land
- Temporary Impact During Construction***
- Mineral Soil Group
 - Group 2
 - Group 3
- Limit of Grading
- Facility Components
 - Limit of Disturbance
 - Facility Site

Note:

*Areas impacted by the Facility that will be permanently taken out of agricultural production.

**Areas impacted by the Facility that will be temporarily taken out of agricultural production during construction and operations.

***Areas impacted by the Facility that will be temporarily taken out of agricultural production until the end of the construction period, at which point they will be restored and returned to agricultural use.

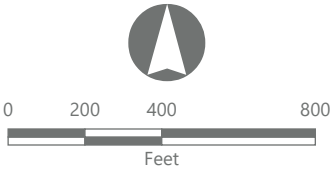
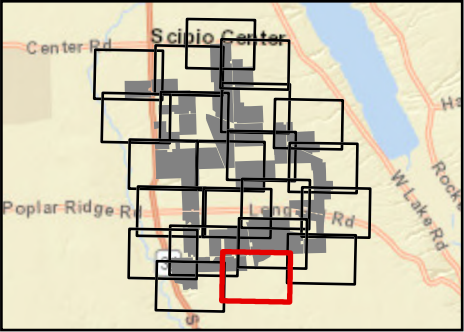
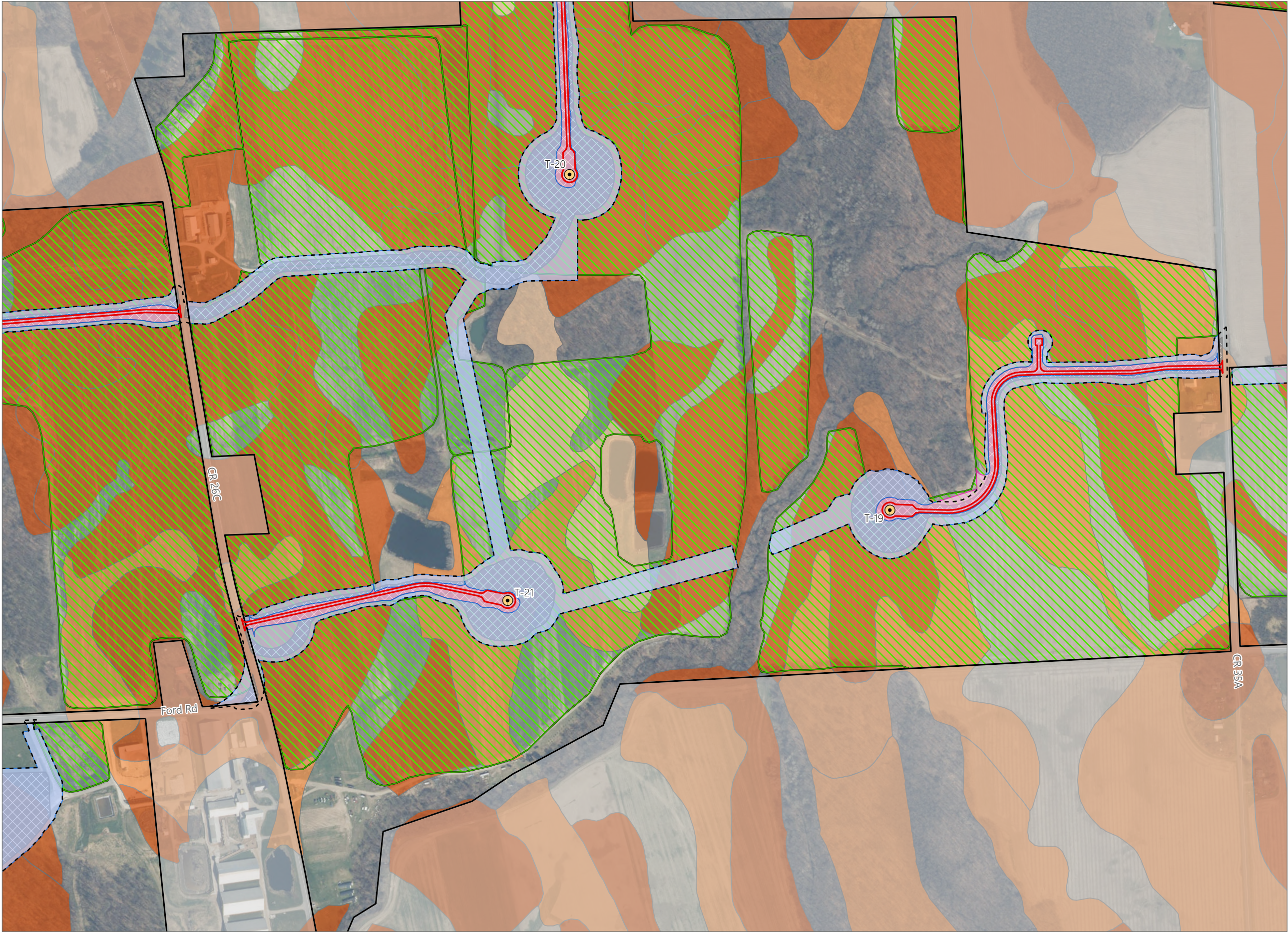


Figure 15-6. Impacts to Agricultural Land



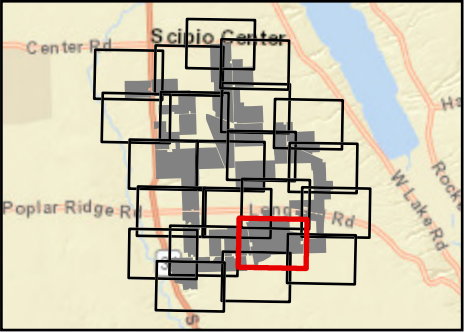
Agricola Wind Project

Towns of Venice and Scipio,
Cayuga County, New York

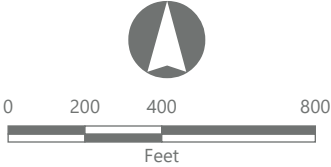
**Article VIII Permit Application
Matter No. 23-00064**

- Active Agricultural Land
- Temporary Impact During Operation**
- Temporary Impact During Construction***
- Mineral Soil Group
 - Group 2
 - Group 3
 - Group 4
- Facility Components
 - Wind Turbine
 - Limit of Grading
 - Limit of Impervious Surface
 - Limit of Disturbance
 - Facility Site

Note:
*Areas impacted by the Facility that will be permanently taken out of agricultural production.
**Areas impacted by the Facility that will be temporarily taken out of agricultural production during construction and operations.
***Areas impacted by the Facility that will be temporarily taken out of agricultural production until the end of the construction period, at which point they will be restored and returned to agricultural use.

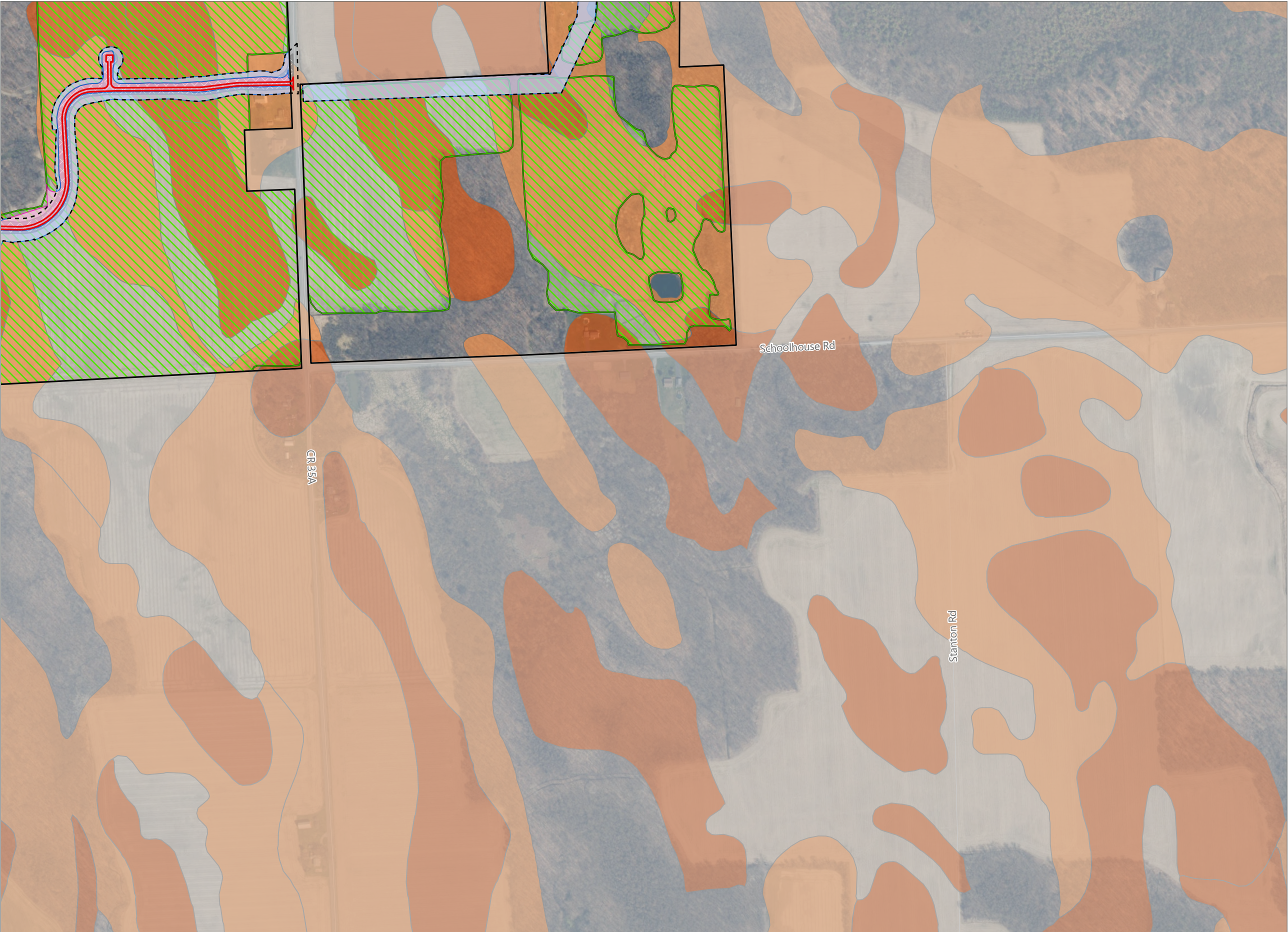


Sheet 21 of 22



Prepared November 4, 2024
Basemap: NYSDOP "2023" orthoimagery map service

Figure 15-6. Impacts to Agricultural Land



Agricola Wind Project

Towns of Venice and Scipio,
Cayuga County, New York

Article VIII Permit Application
Matter No. 23-00064

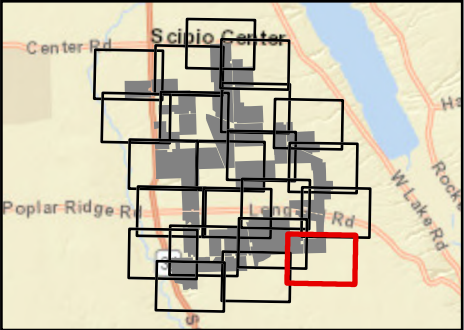
- Active Agricultural Land
- Temporary Impact During Operation**
- Temporary Impact During Construction***
- Mineral Soil Group
 - Group 2
 - Group 3
- Limit of Grading
- Limit of Impervious Surface
- Limit of Disturbance
- Facility Site

Note:

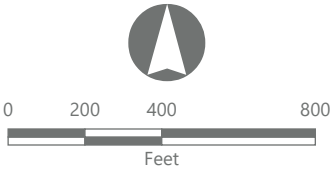
*Areas impacted by the Facility that will be permanently taken out of agricultural production.

**Areas impacted by the Facility that will be temporarily taken out of agricultural production during construction and operations.

***Areas impacted by the Facility that will be temporarily taken out of agricultural production until the end of the construction period, at which point they will be restored and returned to agricultural use.



Sheet 22 of 22



Prepared November 4, 2024
Basemap: NYSDOP "2023" orthoimagery map service