

Figure 10-3. Soil Types

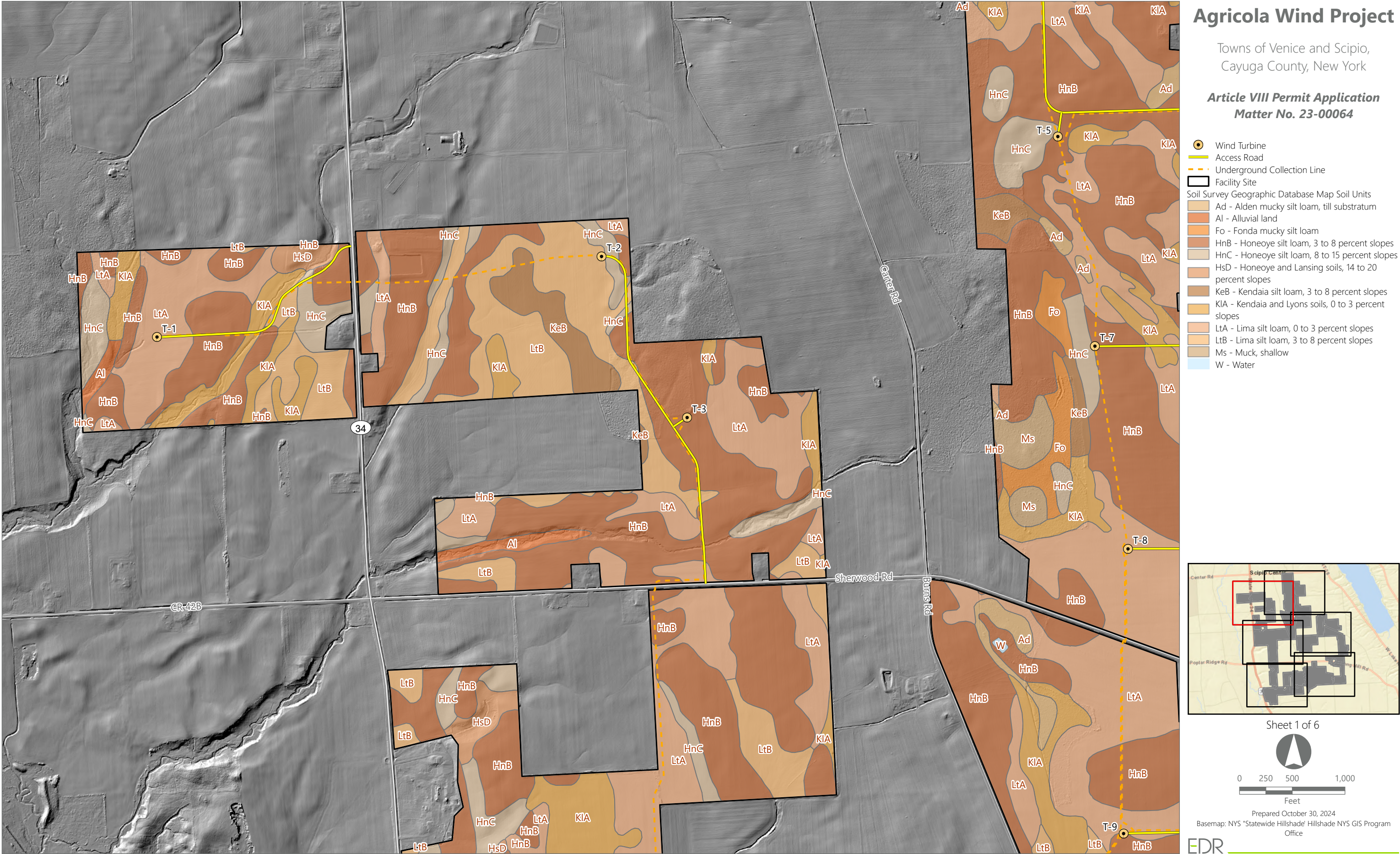
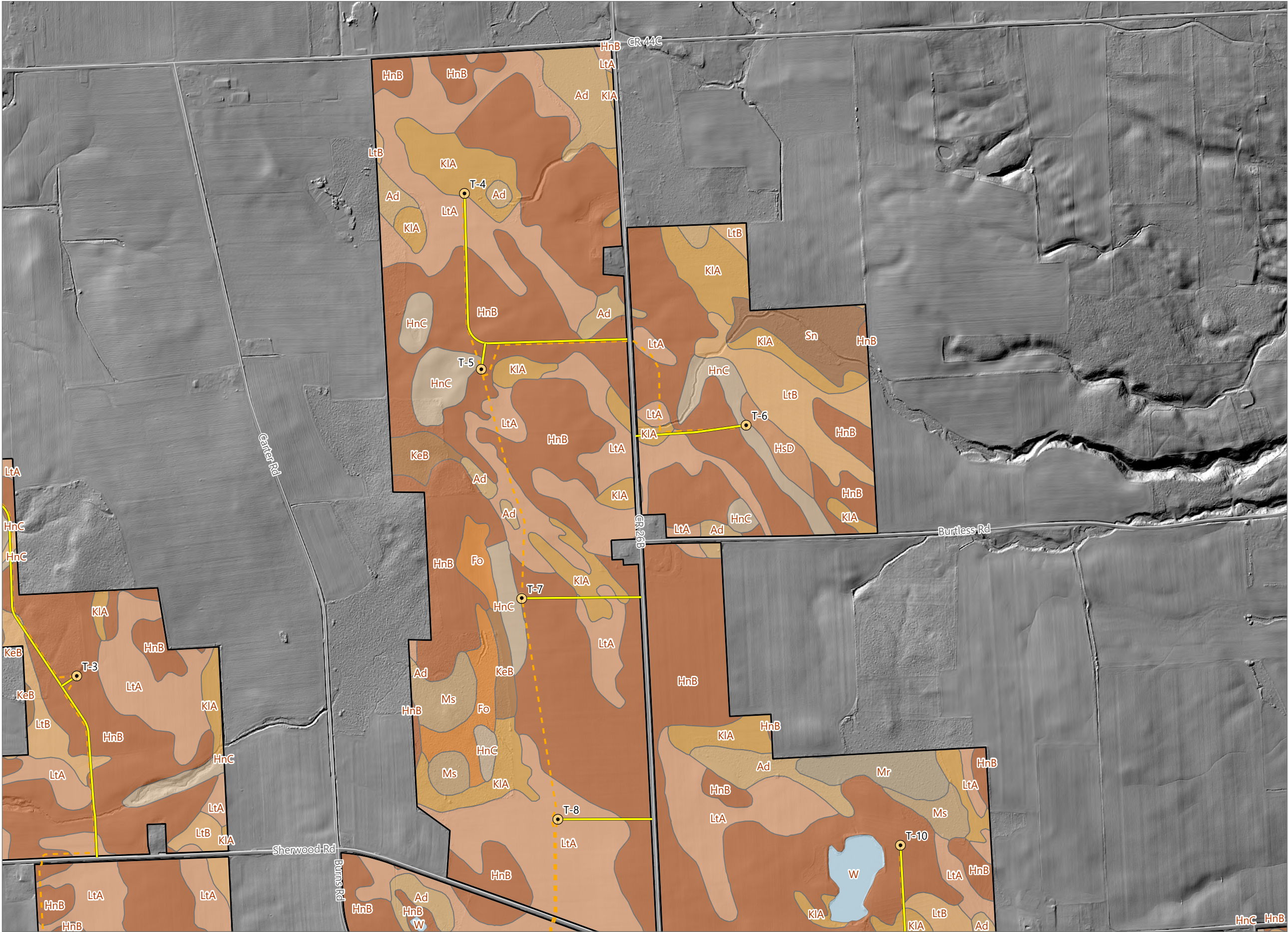


Figure 10-3. Soil Types

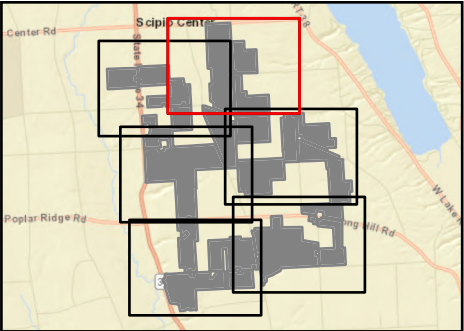


Agricola Wind Project

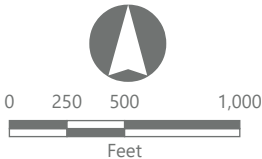
Towns of Venice and Scipio,
Cayuga County, New York

Article VIII Permit Application
Matter No. 23-00064

- Wind Turbine
 - Access Road
 - Underground Collection Line
 - Facility Site
- Soil Survey Geographic Database Map Soil Units
- Ad - Alden mucky silt loam, till substratum
 - Fo - Fonda mucky silt loam
 - HnB - Honeoye silt loam, 3 to 8 percent slopes
 - HnC - Honeoye silt loam, 8 to 15 percent slopes
 - HsD - Honeoye and Lansing soils, 14 to 20 percent slopes
 - KeB - Kendaia silt loam, 3 to 8 percent slopes
 - KIA - Kendaia and Lyons soils, 0 to 3 percent slopes
 - LtA - Lima silt loam, 0 to 3 percent slopes
 - LtB - Lima silt loam, 3 to 8 percent slopes
 - Mr - Muck, deep
 - Ms - Muck, shallow
 - Sn - Sloan silt loam
 - W - Water

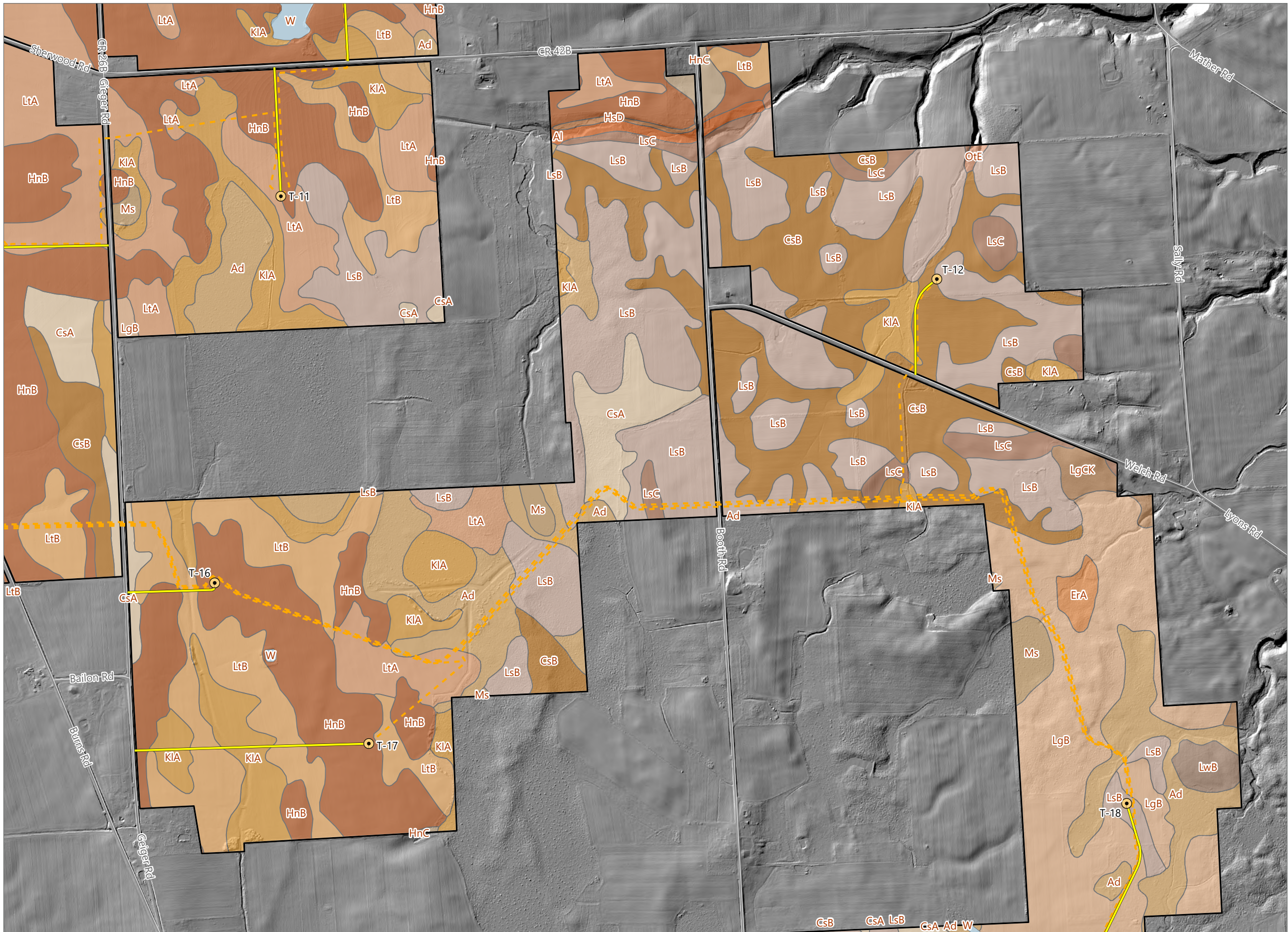


Sheet 2 of 6



Prepared October 30, 2024
Basemap: NYS "Statewide Hillshade" Hillshade NYS GIS Program Office

Figure 10-3. Soil Types

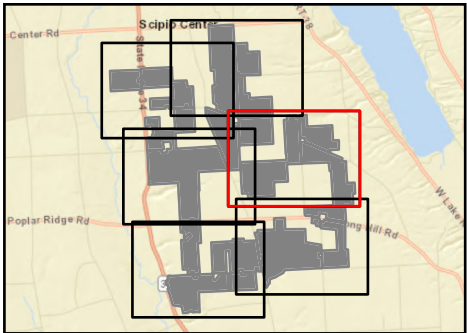


Agricola Wind Project

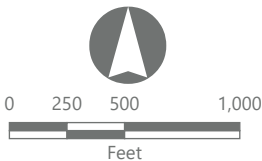
Towns of Venice and Scipio,
Cayuga County, New York

**Article VIII Permit Application
Matter No. 23-00064**

- Wind Turbine
 - Access Road
 - - - Underground Collection Line
 - Facility Site
- Soil Survey Geographic Database Map Soil Units
- Ad - Alden mucky silt loam, till substratum
 - AI - Alluvial land
 - CsA - Conesus gravelly silt loam, 0 to 3 percent slopes
 - CsB - Conesus gravelly silt loam, 3 to 8 percent slopes
 - ErA - Erie channery silt loam, 0 to 3 percent slopes
 - HnB - Honeoye silt loam, 3 to 8 percent slopes
 - HnC - Honeoye silt loam, 8 to 15 percent slopes
 - HsD - Honeoye and Lansing soils, 14 to 20 percent slopes
 - KIA - Kendaia and Lyons soils, 0 to 3 percent slopes
 - LgB - Langford channery silt loam, 2 to 8 percent slopes
 - LgCK - Langford channery silt loam, rolling
 - LsB - Lansing gravelly silt loam, 3 to 8 percent slopes
 - LsC - Lansing gravelly silt loam, 8 to 15 percent slopes
 - LtA - Lima silt loam, 0 to 3 percent slopes
 - LtB - Lima silt loam, 3 to 8 percent slopes
 - LwB - Lordstown channery silt loam, 2 to 8 percent slopes
 - Ms - Muck, shallow
 - OtE - Ontario, Honeoye, and Lansing soils, 20 to 35 percent slopes
 - W - Water

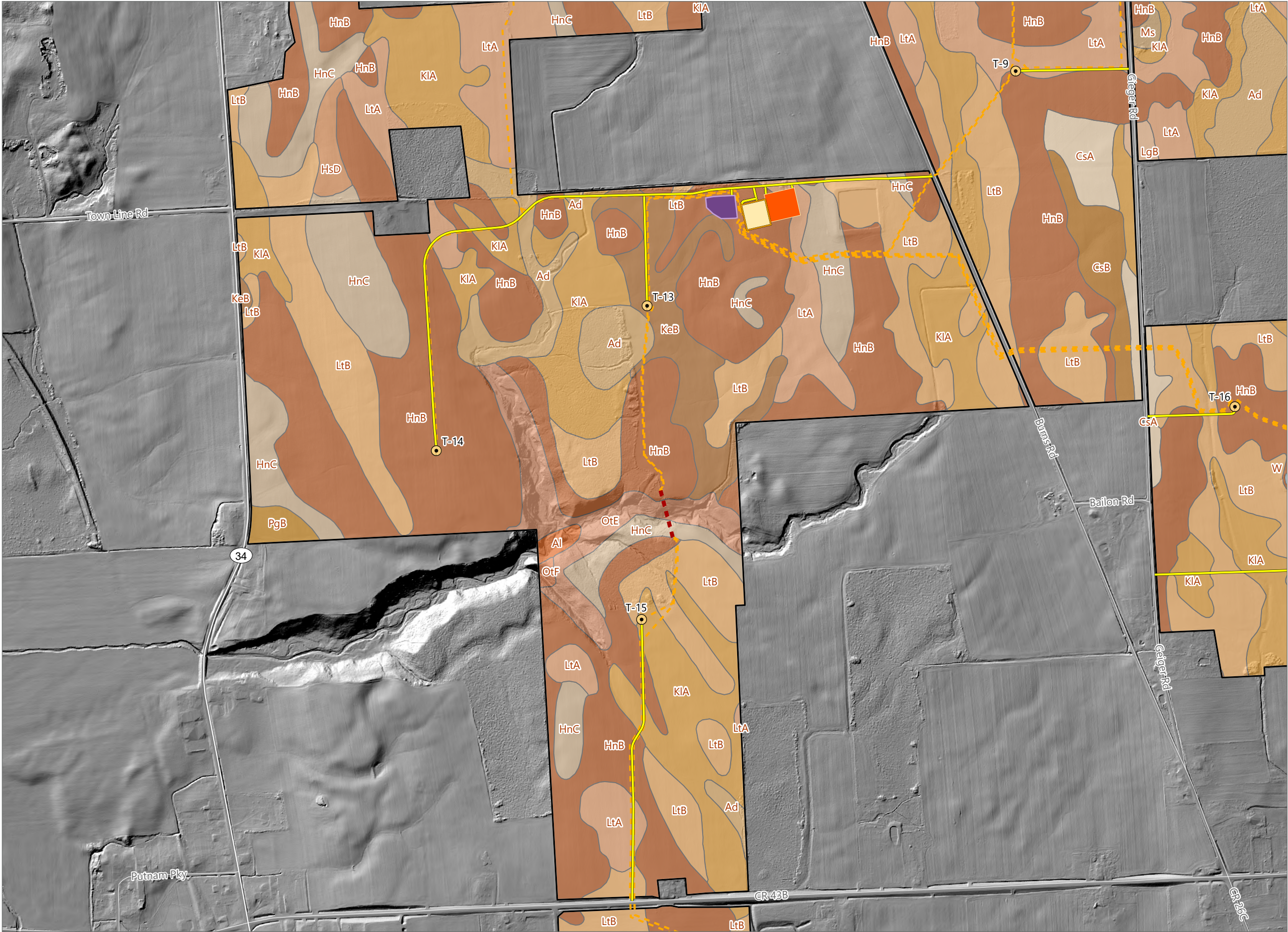


Sheet 3 of 6



Prepared October 30, 2024
Basemap: NYS "Statewide Hillshade" Hillshade NYS GIS Program Office

Figure 10-3. Soil Types

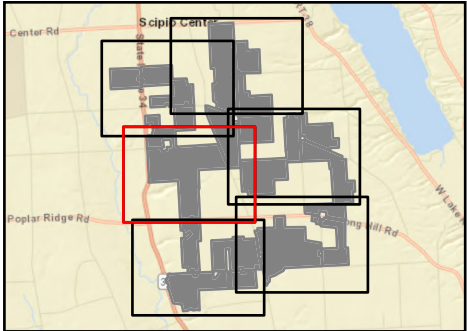


Agricola Wind Project

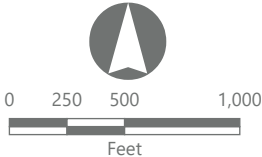
Towns of Venice and Scipio,
Cayuga County, New York

**Article VIII Permit Application
Matter No. 23-00064**

- Wind Turbine
 - Collection Substation
 - POI Substation
 - O&M Facility
 - Access Road
 - Overhead Collection Line
 - Underground Collection Line
 - Facility Site
- Soil Survey Geographic Database Map Soil Units
- Ad - Alden mucky silt loam, till substratum
 - Al - Alluvial land
 - CsA - Conesus gravelly silt loam, 0 to 3 percent slopes
 - CsB - Conesus gravelly silt loam, 3 to 8 percent slopes
 - HnB - Honeoye silt loam, 3 to 8 percent slopes
 - HnC - Honeoye silt loam, 8 to 15 percent slopes
 - HsD - Honeoye and Lansing soils, 14 to 20 percent slopes
 - KeB - Kendaia silt loam, 3 to 8 percent slopes
 - KIA - Kendaia and Lyons soils, 0 to 3 percent slopes
 - LgB - Langford channery silt loam, 2 to 8 percent slopes
 - LtA - Lima silt loam, 0 to 3 percent slopes
 - LtB - Lima silt loam, 3 to 8 percent slopes
 - Ms - Muck, shallow
 - OtE - Ontario, Honeoye, and Lansing soils, 20 to 35 percent slopes
 - OtF - Ontario, Honeoye, and Lansing soils, 35 to 50 percent slopes
 - PgB - Palmyra gravelly loam, 3 to 8 percent slopes
 - W - Water

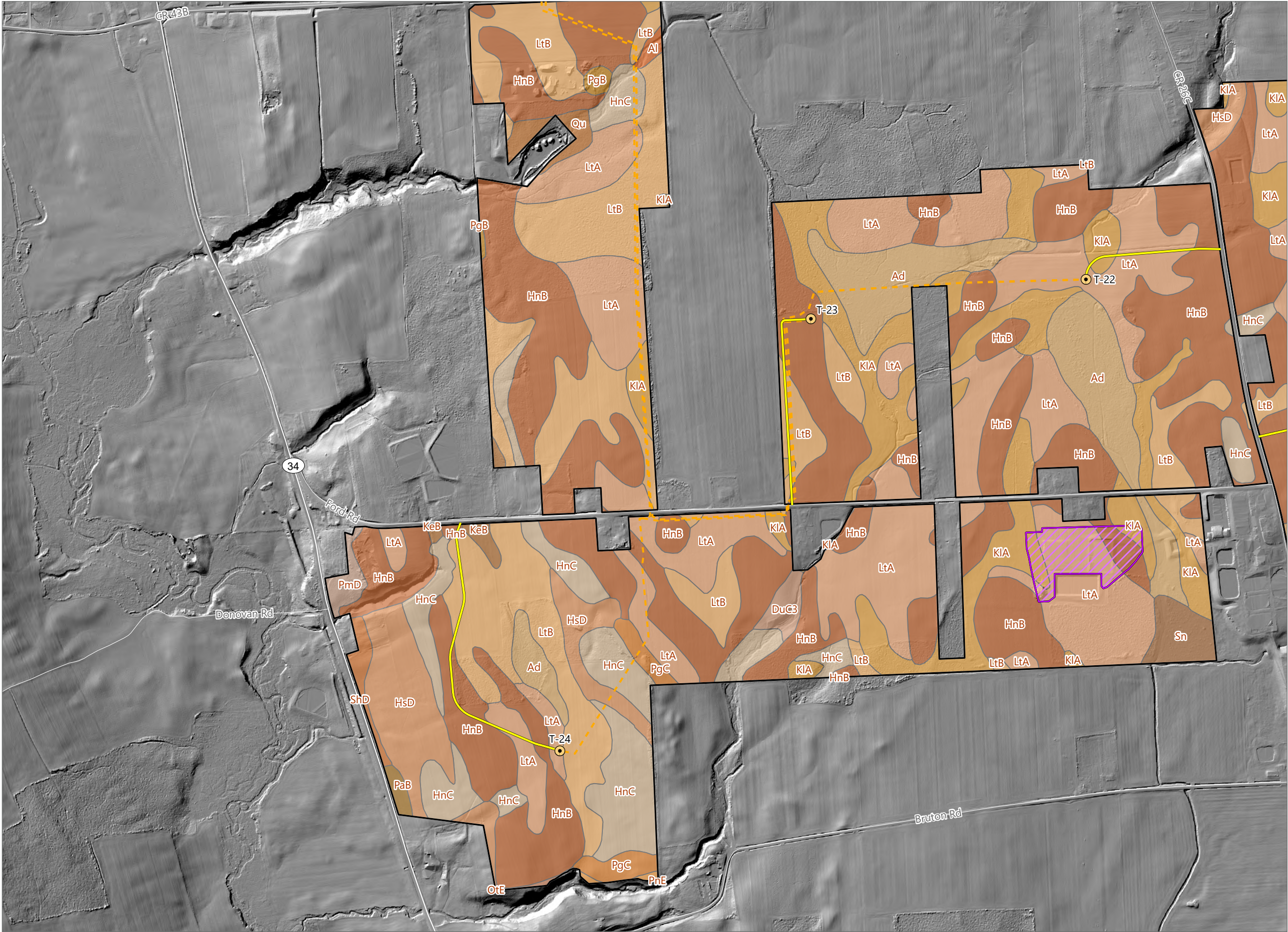


Sheet 4 of 6



Prepared October 30, 2024
Basemap: NYS "Statewide Hillshade" Hillshade NYS GIS Program Office

Figure 10-3. Soil Types

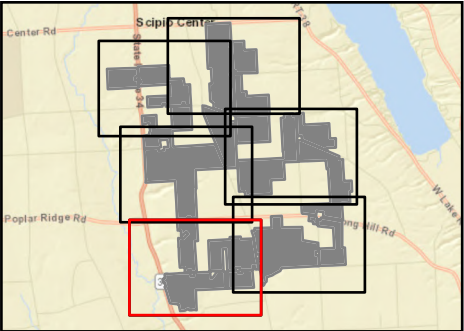


Agricola Wind Project

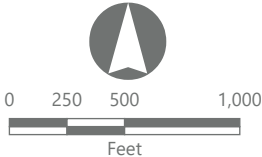
Towns of Venice and Scipio,
Cayuga County, New York

**Article VIII Permit Application
Matter No. 23-00064**

- Wind Turbine
 - Access Road
 - Underground Collection Line
 - Laydown Yard
 - Facility Site
- Soil Survey Geographic Database Map Soil Units
- Ad - Alden mucky silt loam, till substratum
 - Al - Alluvial land
 - DuC3 - Dunkirk silt loam, 6 to 12 percent slopes, eroded
 - HnB - Honeoye silt loam, 3 to 8 percent slopes
 - HnC - Honeoye silt loam, 8 to 15 percent slopes
 - HsD - Honeoye and Lansing soils, 14 to 20 percent slopes
 - KeB - Kendaia silt loam, 3 to 8 percent slopes
 - KIA - Kendaia and Lyons soils, 0 to 3 percent slopes
 - LtA - Lima silt loam, 0 to 3 percent slopes
 - LtB - Lima silt loam, 3 to 8 percent slopes
 - OtE - Ontario, Honeoye, and Lansing soils, 20 to 35 percent slopes
 - PaB - Palmyra gravelly sandy loam, 3 to 8 percent slopes
 - PgB - Palmyra gravelly loam, 3 to 8 percent slopes
 - PgC - Palmyra gravelly loam, 8 to 15 percent slopes
 - PmD - Palmyra soils, 15 to 25 percent slopes
 - PnE - Palmyra, Howard, and Alton soils, 25 to 40 percent slopes
 - Qu - Quarries
 - ShD - Schoharie silty clay loam, 12 to 20 percent slopes
 - Sn - Sloan silt loam

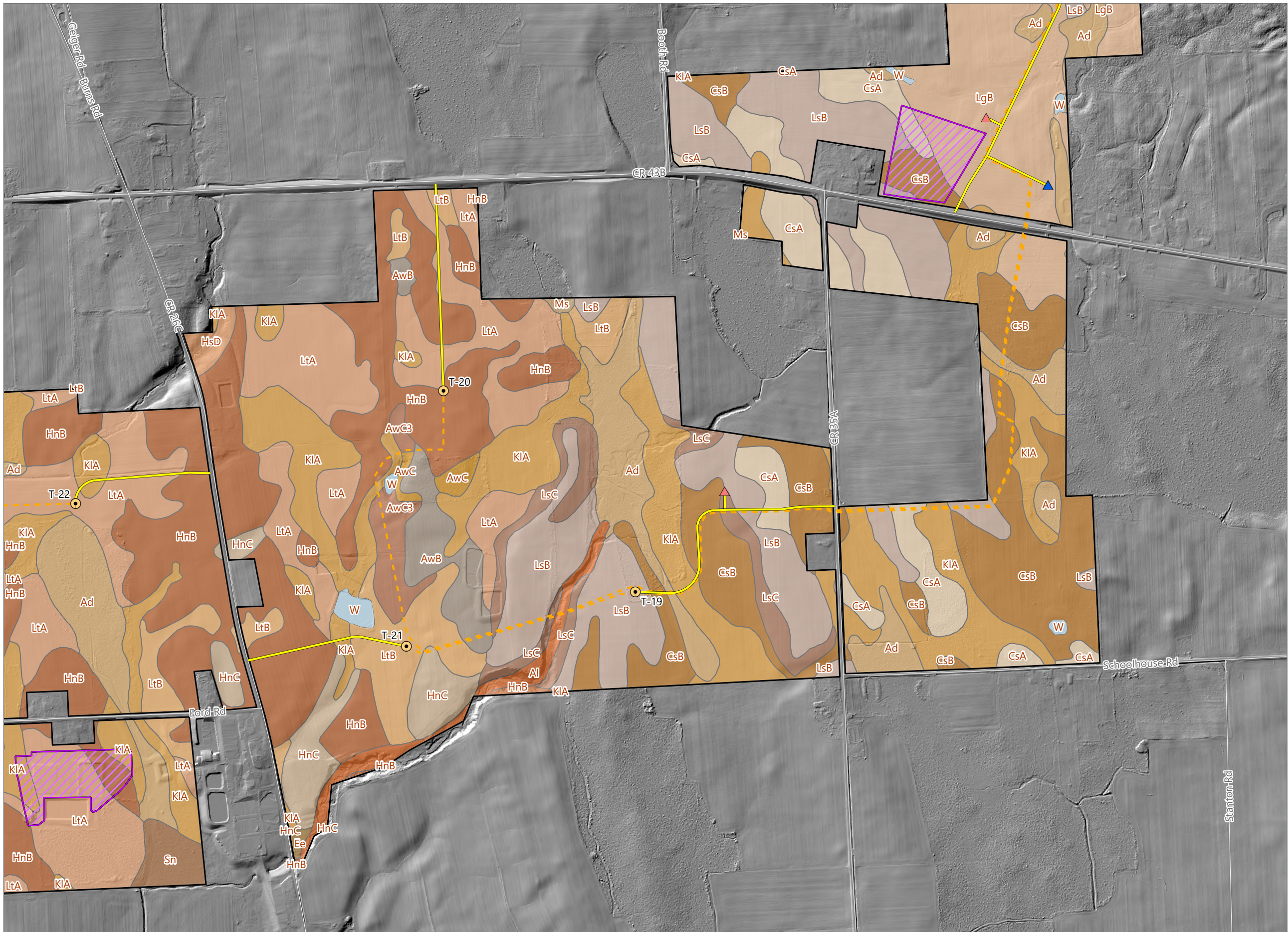


Sheet 5 of 6



Prepared October 30, 2024
Basemap: NYS "Statewide Hillshade" Hillshade NYS GIS Program Office

Figure 10-3. Soil Types

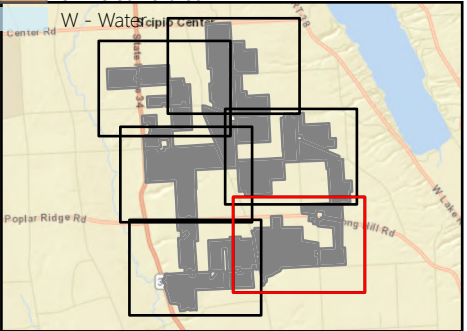


Agricola Wind Project

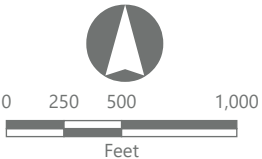
Towns of Venice and Scipio,
Cayuga County, New York

**Article VIII Permit Application
Matter No. 23-00064**

- Wind Turbine
 - ADLS Tower
 - MET Tower
 - Access Road
 - Underground Collection Line
 - Laydown Yard
 - Facility Site
- Soil Survey Geographic Database Map Soil Units
- Ad - Alden mucky silt loam, till substratum
 - Al - Alluvial land
 - AwB - Aurora silt loam, 2 to 6 percent slopes
 - AwC - Aurora silt loam, 6 to 12 percent slopes
 - AwC3 - Aurora silt loam, 6 to 12 percent slopes eroded
 - CsA - Conesus gravelly silt loam, 0 to 3 percent slopes
 - CsB - Conesus gravelly silt loam, 3 to 8 percent slopes
 - Ee - Eel silt loam
 - HnB - Honeoye silt loam, 3 to 8 percent slopes
 - HnC - Honeoye silt loam, 8 to 15 percent slopes
 - HsD - Honeoye and Lansing soils, 14 to 20 percent slopes
 - KIA - Kendaia and Lyons soils, 0 to 3 percent slopes
 - LgB - Langford channery silt loam, 2 to 8 percent slopes
 - LsB - Lansing gravelly silt loam, 3 to 8 percent slopes
 - LsC - Lansing gravelly silt loam, 8 to 15 percent slopes
 - LtA - Lima silt loam, 0 to 3 percent slopes
 - LtB - Lima silt loam, 3 to 8 percent slopes
 - Ms - Muck, shallow
 - Sn - Sloan silt loam



Sheet 6 of 6



Prepared October 30, 2024
Basemap: NYS "Statewide Hillshade" Hillshade NYS GIS Program Office