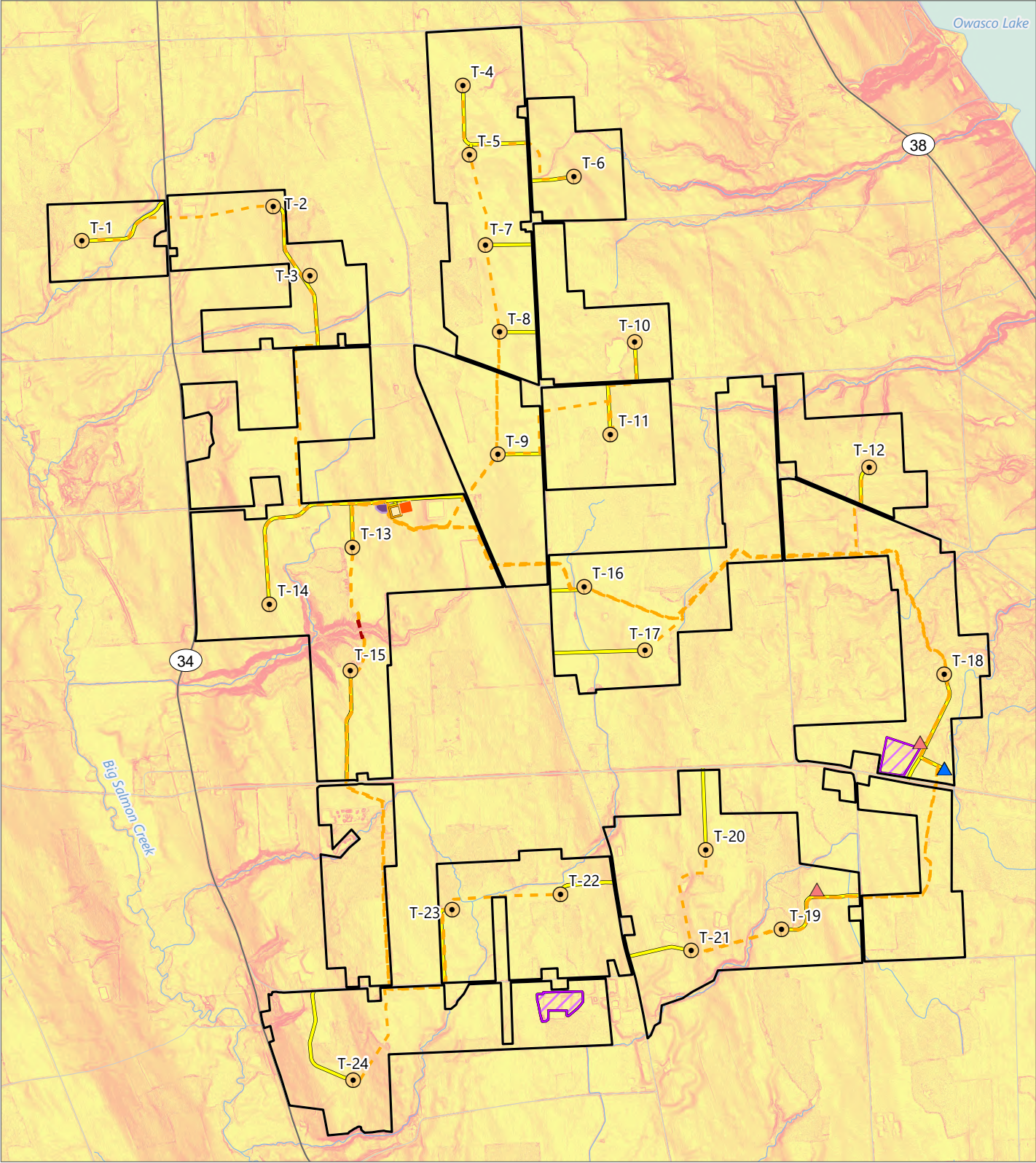


Figure 10-1. Slopes



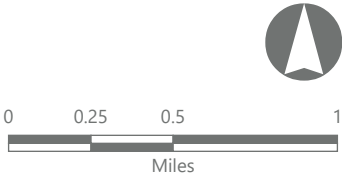
Agricola Wind Project

Towns of Venice and Scipio,
Cayuga County, New York

Article VIII Permit Application
Matter No. 23-00064



Value	Facility Components
0 - 3%	Wind Turbine
3 - 8%	ADLS Tower
8 - 15%	MET Tower
15 - 25%	Access Road
25 - 35%	Overhead Collection Line
>35%	Underground Collection Line
	Collection Substation
	POI Substation
	O&M Facility
	Laydown Yard
	Facility Site



Prepared October 29, 2024
Basemap: Slope derived from 1-meter resolution