



Field Data Sheet





Field Data Sheet

Notes :

Do you need to report observations of another open field?

Yes



Field Data Sheet

Corresponding Point ID(s): 44

Anthropogenic Disturbance/Management Practices: Traffic Noise

Primary Open Field Cover Type: Field Cropland (including hay, wheat, oats, etc.)

Estimated Grass Cover (%): 50-90%

Estimated Forb Cover (%): 10-25%

Estimated Woody Vegetation Cover (%): None

Estimated Bare Ground (%): None

Estimated Litter Depth (inches): 0-1"

Average Vegetation Height (inches): 12-18

Dominant Plant Species (Common Names): Grass, dandelion

Invasive Plant Species (Common Names):

Representative Photo(s):





Field Data Sheet





Field Data Sheet

Notes :

Do you need to report observations of another open field?

Yes



Field Data Sheet

Corresponding Point ID(s): 45

Anthropogenic Disturbance/Management Practices: Farm Equipment In Use

Primary Open Field Cover Type: Successional Old Field

Estimated Grass Cover (%): 25-50%

Estimated Forb Cover (%): 25-50%

Estimated Woody Vegetation Cover (%): 1-10%

Estimated Bare Ground (%): None

Estimated Litter Depth (inches): 0-1"

Average Vegetation Height (inches): 12-18

Dominant Plant Species (Common Names): Grass, buttercup

Invasive Plant Species (Common Names): Honeysuckle

Representative Photo(s):





Field Data Sheet





Field Data Sheet

Notes :

Do you need to report observations of another open field?

Yes



Field Data Sheet

Corresponding Point ID(s): 49

Anthropogenic Disturbance/Management Practices: Traffic Noise

Primary Open Field Cover Type: Row Cropland (Active)

Estimated Grass Cover (%): 1-10%

Estimated Forb Cover (%): 1-10%

Estimated Woody Vegetation Cover (%): None

Estimated Bare Ground (%): 90-100%

Estimated Litter Depth (inches): None

Average Vegetation Height (inches): 2-4

Dominant Plant Species (Common Names): Grass, dandelion

Invasive Plant Species (Common Names):

Representative Photo(s):





Field Data Sheet





Field Data Sheet

Notes :

Do you need to report observations of another open field?

Yes



Field Data Sheet

Corresponding Point ID(s): 41

Anthropogenic Disturbance/Management Practices: Traffic Noise

Primary Open Field Cover Type: Successional Old Field

Estimated Grass Cover (%): 25-50%

Estimated Forb Cover (%): 25-50%

Estimated Woody Vegetation Cover (%): 10-25%

Estimated Bare Ground (%): 1-10%

Estimated Litter Depth (inches): 1-3"

Average Vegetation Height (inches): 12-18

Dominant Plant Species (Common Names): Solidago, grass, bedstraw, rubus, willow

Invasive Plant Species (Common Names):

Representative Photo(s):





Field Data Sheet





Field Data Sheet

Notes :

Fallow field next to point

Do you need to report observations of another open field?

No



Field Data Sheet

Weather Conditions at End of Survey

Temperature (°F): 65

Wind Speed (mph): 4 – 7 (Light Breeze; Leaves rustle)

Wind Direction: S

Cloud Cover: None (Clear)

Visibility: Good (10+ miles; clear)

Precipitation: None (Clear)

Weather Notes:

Were there any notable weather events/changes during the survey? No

Bird Observation Summary

Were any Endangered/Threatened Species observed?

No

Were any Species of Special Concern observed?

No

Were probable, possible, or confirmed breeding behaviors observed for any Listed Species (Endangered/Threatened/Special Concern)?

No

Were there additional photos documenting birds observed, habitat conditions, and/or other features of interest?

No

Additional Photo(s):

Were any alternate point count survey locations used due to access or visual constraints?

No

Alternate Point Count Survey Locations:



Field Data Sheet

**Incidental bird species observed outside of timed point count surveys
(Alpha Codes or Common Names):**

GBHE

Overall Survey Notes:



Field Data Sheet

Breeding Bird Survey

Submitted By: fsimeone@edrdpc.com

Submitted Time: May 24, 2023 11:53 AM

Survey Information

Project Name: Hoffman Falls

Survey Date: May 24, 2023

Surveyor Name: Frank Simeone, Martin Cain

Points Surveyed: 1-17

Survey Start Time: 05:04

Survey End Time: 10:23

Weather Conditions at Start of Survey

Temperature (°F): 59

Wind Speed (mph): 0 – 1 (Calm; Smoke rises vertically)

Wind Direction: SSW

Cloud Cover: Mostly Clear (10-25%)

Visibility: Good (10+ miles; clear)

Precipitation: None (Clear)

Weather Notes:



Field Data Sheet

Open Field Condition Observations

Corresponding Point ID(s): 1

Anthropogenic Disturbance/Management Practices: None notable

Primary Open Field Cover Type: Row Cropland (Active)

Estimated Grass Cover (%): None

Estimated Forb Cover (%): None

Estimated Woody Vegetation Cover (%): None

Estimated Bare Ground (%): 90-100%

Estimated Litter Depth (inches): 0-1"

Average Vegetation Height (inches): 0 (None)

Dominant Plant Species (Common Names): Corn litter

Invasive Plant Species (Common Names):

Representative Photo(s):





Field Data Sheet





Field Data Sheet

Notes :

Do you need to report observations of another open field?

Yes



Field Data Sheet

Corresponding Point ID(s): 2

Anthropogenic Disturbance/Management Practices: None notable

Primary Open Field Cover Type: Row Cropland (Active)

Estimated Grass Cover (%): None

Estimated Forb Cover (%): None

Estimated Woody Vegetation Cover (%): None

Estimated Bare Ground (%): 90-100%

Estimated Litter Depth (inches): 0-1"

Average Vegetation Height (inches): 0 (None)

Dominant Plant Species (Common Names): Corn litter

Invasive Plant Species (Common Names):

Representative Photo(s):





Field Data Sheet





Field Data Sheet

Notes :

Do you need to report observations of another open field?

Yes



Field Data Sheet

Corresponding Point ID(s): 13

Anthropogenic Disturbance/Management Practices: ATV/Other Vehicle Noise

Primary Open Field Cover Type: Row Cropland (Active)

Estimated Grass Cover (%): None

Estimated Forb Cover (%): None

Estimated Woody Vegetation Cover (%): None

Estimated Bare Ground (%): 90-100%

Estimated Litter Depth (inches): 0-1"

Average Vegetation Height (inches): 0 (None)

Dominant Plant Species (Common Names): Corn litter

Invasive Plant Species (Common Names):

Representative Photo(s):





Field Data Sheet





Field Data Sheet

Notes :

Do you need to report observations of another open field?

Yes



Field Data Sheet

Corresponding Point ID(s): 14

Anthropogenic Disturbance/Management Practices: ATV/Other Vehicle Noise

Primary Open Field Cover Type: Row Cropland (Active)

Estimated Grass Cover (%): 1-10%

Estimated Forb Cover (%): None

Estimated Woody Vegetation Cover (%): None

Estimated Bare Ground (%): 90-100%

Estimated Litter Depth (inches): 0-1"

Average Vegetation Height (inches): 2-4

Dominant Plant Species (Common Names): Grass, bedstraw

Invasive Plant Species (Common Names):

Representative Photo(s):





Field Data Sheet





Field Data Sheet

Notes :

Do you need to report observations of another open field?

Yes



Field Data Sheet

Corresponding Point ID(s): 15.1

Anthropogenic Disturbance/Management Practices: Other (describe in notes)

Primary Open Field Cover Type: Row Cropland (Active)

Estimated Grass Cover (%): 25-50%

Estimated Forb Cover (%): 10-25%

Estimated Woody Vegetation Cover (%): 1-10%

Estimated Bare Ground (%): 50-90%

Estimated Litter Depth (inches): 0-1"

Average Vegetation Height (inches): 6-12

Dominant Plant Species (Common Names): Grass, dandelion, clover, bedstraw, goldenrod, dogwood,

Invasive Plant Species (Common Names):

Representative Photo(s):





Field Data Sheet





Field Data Sheet

Notes :

Cows making noise next to point

Do you need to report observations of another open field?

Yes



Field Data Sheet

Corresponding Point ID(s): 16

Anthropogenic Disturbance/Management Practices: ATV/Other Vehicle Noise

Primary Open Field Cover Type: Row Cropland (Active)

Estimated Grass Cover (%): None

Estimated Forb Cover (%): None

Estimated Woody Vegetation Cover (%): None

Estimated Bare Ground (%): 90-100%

Estimated Litter Depth (inches): 0-1"

Average Vegetation Height (inches): 0 (None)

Dominant Plant Species (Common Names): Corn litter

Invasive Plant Species (Common Names):

Representative Photo(s):





Field Data Sheet





Field Data Sheet

Notes :

Do you need to report observations of another open field?

Yes



Field Data Sheet

Corresponding Point ID(s): 17

Anthropogenic Disturbance/Management Practices: ATV/Other Vehicle Noise

Primary Open Field Cover Type: Row Cropland (Active)

Estimated Grass Cover (%): None

Estimated Forb Cover (%): None

Estimated Woody Vegetation Cover (%): None

Estimated Bare Ground (%): 90-100%

Estimated Litter Depth (inches): 0-1"

Average Vegetation Height (inches): 0 (None)

Dominant Plant Species (Common Names): Corn litter

Invasive Plant Species (Common Names):

Representative Photo(s):





Field Data Sheet





Field Data Sheet

Notes :

Do you need to report observations of another open field?

Yes



Field Data Sheet

Corresponding Point ID(s): 16.2

Anthropogenic Disturbance/Management Practices: ATV/Other Vehicle Noise

Primary Open Field Cover Type: Row Cropland (Active)

Estimated Grass Cover (%): 25-50%

Estimated Forb Cover (%): 10-25%

Estimated Woody Vegetation Cover (%): None

Estimated Bare Ground (%): 50-90%

Estimated Litter Depth (inches): 0-1"

Average Vegetation Height (inches): 6-12

Dominant Plant Species (Common Names): Grass, dandelion, clover, buttercup, goldenrod, bedstraw, wintercress, thistle,

Invasive Plant Species (Common Names): Common mugwort,

Representative Photo(s):





Field Data Sheet





Field Data Sheet

Notes :

Surveyed 40 m south due to bull being in pasture.

Do you need to report observations of another open field?

Yes



Field Data Sheet

Corresponding Point ID(s): 16.1

Anthropogenic Disturbance/Management Practices: ATV/Other Vehicle Noise

Primary Open Field Cover Type: Pastureland

Estimated Grass Cover (%): 50-90%

Estimated Forb Cover (%): 10-25%

Estimated Woody Vegetation Cover (%): None

Estimated Bare Ground (%): None

Estimated Litter Depth (inches): 0-1"

Average Vegetation Height (inches): 6-12

Dominant Plant Species (Common Names): Grass, dandelion, clover, bedstraw, buttercup, goldenrod,

Invasive Plant Species (Common Names): Mugwort,

Representative Photo(s):





Field Data Sheet





Field Data Sheet

Notes :

Do you need to report observations of another open field?

Yes



Field Data Sheet

Corresponding Point ID(s): 12

Anthropogenic Disturbance/Management Practices: ATV/Other Vehicle Noise

Primary Open Field Cover Type: Field Cropland (including hay, wheat, oats, etc.)

Estimated Grass Cover (%): 50-90%

Estimated Forb Cover (%): 10-25%

Estimated Woody Vegetation Cover (%): None

Estimated Bare Ground (%): None

Estimated Litter Depth (inches): None

Average Vegetation Height (inches): 2-4

Dominant Plant Species (Common Names): Grass, clover, dandelion,

Invasive Plant Species (Common Names):

Representative Photo(s):





Field Data Sheet





Field Data Sheet

Notes :

Do you need to report observations of another open field?

Yes



Field Data Sheet

Corresponding Point ID(s): 3

Anthropogenic Disturbance/Management Practices: None notable

Primary Open Field Cover Type: Row Cropland (Active)

Estimated Grass Cover (%): None

Estimated Forb Cover (%): None

Estimated Woody Vegetation Cover (%): None

Estimated Bare Ground (%): 90-100%

Estimated Litter Depth (inches): 0-1"

Average Vegetation Height (inches): 0 (None)

Dominant Plant Species (Common Names): Corn litter

Invasive Plant Species (Common Names):

Representative Photo(s):





Field Data Sheet





Field Data Sheet

Notes :

Do you need to report observations of another open field?

Yes



Field Data Sheet

Corresponding Point ID(s): 4

Anthropogenic Disturbance/Management Practices: None notable

Primary Open Field Cover Type: Row Cropland (Active)

Estimated Grass Cover (%): None

Estimated Forb Cover (%): None

Estimated Woody Vegetation Cover (%): None

Estimated Bare Ground (%): 90-100%

Estimated Litter Depth (inches): None

Average Vegetation Height (inches): 0 (None)

Dominant Plant Species (Common Names):

Invasive Plant Species (Common Names):

Representative Photo(s):





Field Data Sheet





Field Data Sheet

Notes :

Do you need to report observations of another open field?

Yes



Field Data Sheet

Corresponding Point ID(s): 6

Anthropogenic Disturbance/Management Practices: None notable

Primary Open Field Cover Type: Field Cropland (including hay, wheat, oats, etc.)

Estimated Grass Cover (%): 50-90%

Estimated Forb Cover (%): 25-50%

Estimated Woody Vegetation Cover (%): None

Estimated Bare Ground (%): None

Estimated Litter Depth (inches): 0-1"

Average Vegetation Height (inches): 12-18

Dominant Plant Species (Common Names): Grass, clover, dandelion,

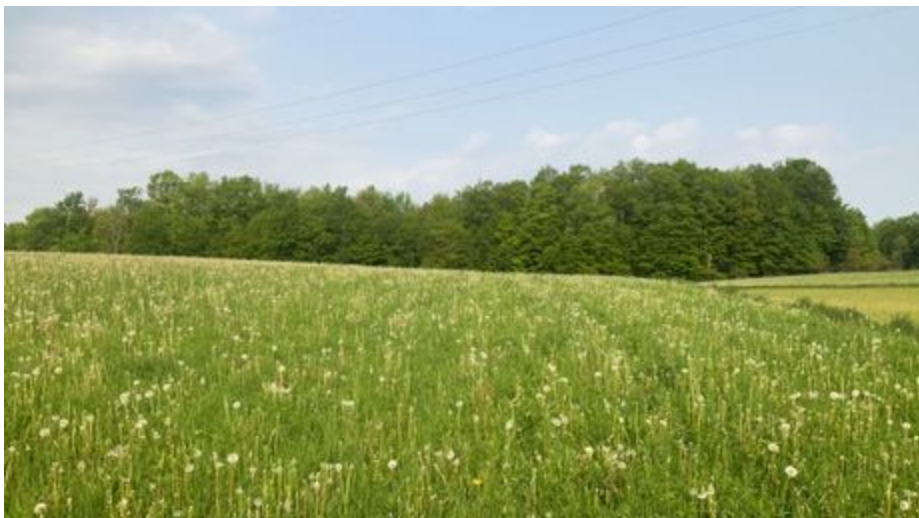
Invasive Plant Species (Common Names):

Representative Photo(s):





Field Data Sheet





Field Data Sheet

Notes :

Do you need to report observations of another open field?

Yes



Field Data Sheet

Corresponding Point ID(s): 5

Anthropogenic Disturbance/Management Practices: None notable

Primary Open Field Cover Type: Row Cropland (Active)

Estimated Grass Cover (%): None

Estimated Forb Cover (%): None

Estimated Woody Vegetation Cover (%): None

Estimated Bare Ground (%): 90-100%

Estimated Litter Depth (inches): None

Average Vegetation Height (inches): 0 (None)

Dominant Plant Species (Common Names): Corn litter

Invasive Plant Species (Common Names):

Representative Photo(s):





Field Data Sheet





Field Data Sheet

Notes :

Do you need to report observations of another open field?

Yes



Field Data Sheet

Corresponding Point ID(s): 9

Anthropogenic Disturbance/Management Practices: ATV/Other Vehicle Noise

Primary Open Field Cover Type: Row Cropland (Active)

Estimated Grass Cover (%): None

Estimated Forb Cover (%): None

Estimated Woody Vegetation Cover (%): None

Estimated Bare Ground (%): 90-100%

Estimated Litter Depth (inches): None

Average Vegetation Height (inches): 0 (None)

Dominant Plant Species (Common Names):

Invasive Plant Species (Common Names):

Representative Photo(s):





Field Data Sheet





Field Data Sheet

Notes :

Do you need to report observations of another open field?

Yes



Field Data Sheet

Corresponding Point ID(s): 8

Anthropogenic Disturbance/Management Practices: None notable

Primary Open Field Cover Type: Row Cropland (Active)

Estimated Grass Cover (%): None

Estimated Forb Cover (%): None

Estimated Woody Vegetation Cover (%): None

Estimated Bare Ground (%): 90-100%

Estimated Litter Depth (inches): 0-1"

Average Vegetation Height (inches): 0 (None)

Dominant Plant Species (Common Names): Corn litter

Invasive Plant Species (Common Names):

Representative Photo(s):





Field Data Sheet





Field Data Sheet

Notes :

Do you need to report observations of another open field?

Yes



Field Data Sheet

Corresponding Point ID(s): 7

Anthropogenic Disturbance/Management Practices: None notable

Primary Open Field Cover Type: Row Cropland (Active)

Estimated Grass Cover (%): None

Estimated Forb Cover (%): None

Estimated Woody Vegetation Cover (%): None

Estimated Bare Ground (%): 90-100%

Estimated Litter Depth (inches): None

Average Vegetation Height (inches): 0 (None)

Dominant Plant Species (Common Names): Corn litter

Invasive Plant Species (Common Names):

Representative Photo(s):





Field Data Sheet





Field Data Sheet

Notes :

Do you need to report observations of another open field?

Yes



Field Data Sheet

Corresponding Point ID(s): 7.1

Anthropogenic Disturbance/Management Practices: None notable

Primary Open Field Cover Type: Row Cropland (Active)

Estimated Grass Cover (%): None

Estimated Forb Cover (%): None

Estimated Woody Vegetation Cover (%): None

Estimated Bare Ground (%): 90-100%

Estimated Litter Depth (inches): 0-1"

Average Vegetation Height (inches): 0 (None)

Dominant Plant Species (Common Names): Corn litter

Invasive Plant Species (Common Names):

Representative Photo(s):





Field Data Sheet





Field Data Sheet

Notes :

Do you need to report observations of another open field?

Yes



Field Data Sheet

Corresponding Point ID(s): 10

Anthropogenic Disturbance/Management Practices: None notable

Primary Open Field Cover Type: Row Cropland (Active)

Estimated Grass Cover (%): None

Estimated Forb Cover (%): None

Estimated Woody Vegetation Cover (%): None

Estimated Bare Ground (%): 90-100%

Estimated Litter Depth (inches): 0-1"

Average Vegetation Height (inches): 0 (None)

Dominant Plant Species (Common Names): Corn litter

Invasive Plant Species (Common Names):

Representative Photo(s):





Field Data Sheet





Field Data Sheet

Notes :

Do you need to report observations of another open field?

Yes



Field Data Sheet

Corresponding Point ID(s): 11

Anthropogenic Disturbance/Management Practices: None notable

Primary Open Field Cover Type: Row Cropland (Active)

Estimated Grass Cover (%): None

Estimated Forb Cover (%): None

Estimated Woody Vegetation Cover (%): None

Estimated Bare Ground (%): 90-100%

Estimated Litter Depth (inches): 0-1"

Average Vegetation Height (inches): 0 (None)

Dominant Plant Species (Common Names): Corn litter

Invasive Plant Species (Common Names):

Representative Photo(s):





Field Data Sheet





Field Data Sheet

Notes :

Do you need to report observations of another open field?

No



Field Data Sheet

Weather Conditions at End of Survey

Temperature (°F): 67

Wind Speed (mph): 8 – 12 (Gentle Breeze; Leaves and Small twigs in constant motion)

Wind Direction: WNW

Cloud Cover: Mostly Cloudy (50% - 90%)

Visibility: Good (10+ miles; clear)

Precipitation: None (Clear)

Weather Notes:

Were there any notable weather events/changes during the survey? No

Bird Observation Summary

Were any Endangered/Threatened Species observed?

No

Were any Species of Special Concern observed?

No

Were probable, possible, or confirmed breeding behaviors observed for any Listed Species (Endangered/Threatened/Special Concern)?

No

Were there additional photos documenting birds observed, habitat conditions, and/or other features of interest?

No

Additional Photo(s):

Were any alternate point count survey locations used due to access or visual constraints?

Yes



Field Data Sheet

Alternate Point Count Survey Locations: 16.2 surveyed 100 feet west of original point to avoid bull pasture and 15.1

Incidental bird species observed outside of timed point count surveys (Alpha Codes or Common Names):
WITU

Overall Survey Notes:



Field Data Sheet

Breeding Bird Survey

Submitted By: bsmith@edrdpc.com

Submitted Time: May 25, 2023 8:41 AM

Survey Information

Project Name: Hoffman Falls

Survey Date: May 25, 2023

Surveyor Name: Brooke Smith

Points Surveyed: 54-68

Survey Start Time: 05:10

Survey End Time: 08:40

Weather Conditions at Start of Survey

Temperature (°F): 34

Wind Speed (mph): 4 – 7 (Light Breeze; Leaves rustle)

Wind Direction: NW

Cloud Cover: None (Clear)

Visibility: Good (10+ miles; clear)

Precipitation: None (Clear)

Weather Notes:



Field Data Sheet

Open Field Condition Observations

Corresponding Point ID(s): 66

Anthropogenic Disturbance/Management Practices: Traffic Noise

Primary Open Field Cover Type: Field Cropland (including hay, wheat, oats, etc.)

Estimated Grass Cover (%): 90-100%

Estimated Forb Cover (%): None

Estimated Woody Vegetation Cover (%): None

Estimated Bare Ground (%): None

Estimated Litter Depth (inches): None

Average Vegetation Height (inches): 4-6

Dominant Plant Species (Common Names): Grass and dandelion

Invasive Plant Species (Common Names):

Representative Photo(s):





Field Data Sheet





Field Data Sheet

Notes :

Do you need to report observations of another open field?

Yes



Field Data Sheet

Corresponding Point ID(s): 67

Anthropogenic Disturbance/Management Practices: Traffic Noise

Primary Open Field Cover Type: Row Cropland (Active)

Estimated Grass Cover (%): None

Estimated Forb Cover (%): 1-10%

Estimated Woody Vegetation Cover (%): None

Estimated Bare Ground (%): 90-100%

Estimated Litter Depth (inches): 0-1"

Average Vegetation Height (inches): 0-2

Dominant Plant Species (Common Names): Beans?

Invasive Plant Species (Common Names):

Representative Photo(s):





Field Data Sheet





Field Data Sheet

Notes :

Do you need to report observations of another open field?

Yes



Field Data Sheet

Corresponding Point ID(s): 68

Anthropogenic Disturbance/Management Practices: Traffic Noise

Primary Open Field Cover Type: Row Cropland (Active)

Estimated Grass Cover (%): None

Estimated Forb Cover (%): 1-10%

Estimated Woody Vegetation Cover (%): None

Estimated Bare Ground (%): 90-100%

Estimated Litter Depth (inches): 0-1"

Average Vegetation Height (inches): 0-2

Dominant Plant Species (Common Names): Bean sprouts, alfalfa

Invasive Plant Species (Common Names):

Representative Photo(s):





Field Data Sheet





Field Data Sheet

Notes :

Do you need to report observations of another open field?

Yes



Field Data Sheet

Corresponding Point ID(s): 65

Anthropogenic Disturbance/Management Practices: Traffic Noise

Primary Open Field Cover Type: Row Cropland (Active)

Estimated Grass Cover (%): 10-25%

Estimated Forb Cover (%): 10-25%

Estimated Woody Vegetation Cover (%): None

Estimated Bare Ground (%): 25-50%

Estimated Litter Depth (inches): None

Average Vegetation Height (inches): 6-12

Dominant Plant Species (Common Names): Grass, dandelion, dogwood

Invasive Plant Species (Common Names):

Representative Photo(s):





Field Data Sheet





Field Data Sheet

Notes :

Do you need to report observations of another open field?

Yes



Field Data Sheet

Corresponding Point ID(s): 64

Anthropogenic Disturbance/Management Practices: None notable

Primary Open Field Cover Type: Row Cropland (Active)

Estimated Grass Cover (%): None

Estimated Forb Cover (%): None

Estimated Woody Vegetation Cover (%): None

Estimated Bare Ground (%): 90-100%

Estimated Litter Depth (inches): None

Average Vegetation Height (inches): 0 (None)

Dominant Plant Species (Common Names):

Invasive Plant Species (Common Names):

Representative Photo(s):





Field Data Sheet





Field Data Sheet

Notes :

Do you need to report observations of another open field?

Yes



Field Data Sheet

Corresponding Point ID(s): 61

Anthropogenic Disturbance/Management Practices: None notable

Primary Open Field Cover Type: Pastureland

Estimated Grass Cover (%): 50-90%

Estimated Forb Cover (%): None

Estimated Woody Vegetation Cover (%): None

Estimated Bare Ground (%): 50-90%

Estimated Litter Depth (inches): None

Average Vegetation Height (inches): 4-6

Dominant Plant Species (Common Names): Grass

Invasive Plant Species (Common Names):

Representative Photo(s):





Field Data Sheet





Field Data Sheet

Notes :

Do you need to report observations of another open field?

Yes



Field Data Sheet

Corresponding Point ID(s): 62

Anthropogenic Disturbance/Management Practices: None notable

Primary Open Field Cover Type: Pastureland

Estimated Grass Cover (%): 90-100%

Estimated Forb Cover (%): None

Estimated Woody Vegetation Cover (%): None

Estimated Bare Ground (%): None

Estimated Litter Depth (inches): None

Average Vegetation Height (inches): 6-12

Dominant Plant Species (Common Names): Grass

Invasive Plant Species (Common Names):

Representative Photo(s):





Field Data Sheet





Field Data Sheet

Notes :

Do you need to report observations of another open field?

Yes



Field Data Sheet

Corresponding Point ID(s): 63

Anthropogenic Disturbance/Management Practices: None notable

Primary Open Field Cover Type: Pastureland

Estimated Grass Cover (%): 90-100%

Estimated Forb Cover (%): None

Estimated Woody Vegetation Cover (%): None

Estimated Bare Ground (%): None

Estimated Litter Depth (inches): None

Average Vegetation Height (inches): 6-12

Dominant Plant Species (Common Names): Grass

Invasive Plant Species (Common Names):

Representative Photo(s):





Field Data Sheet





Field Data Sheet

Notes :

Do you need to report observations of another open field?

Yes



Field Data Sheet

Corresponding Point ID(s): 60

Anthropogenic Disturbance/Management Practices: None notable

Primary Open Field Cover Type: Pastureland

Estimated Grass Cover (%): 90-100%

Estimated Forb Cover (%): None

Estimated Woody Vegetation Cover (%): None

Estimated Bare Ground (%): None

Estimated Litter Depth (inches): None

Average Vegetation Height (inches): 6-12

Dominant Plant Species (Common Names): Grass

Invasive Plant Species (Common Names):

Representative Photo(s):





Field Data Sheet





Field Data Sheet

Notes :

Do you need to report observations of another open field?

Yes



Field Data Sheet

Corresponding Point ID(s): 55

Anthropogenic Disturbance/Management Practices: None notable

Primary Open Field Cover Type: Field Cropland (including hay, wheat, oats, etc.)

Estimated Grass Cover (%): 90-100%

Estimated Forb Cover (%): None

Estimated Woody Vegetation Cover (%): None

Estimated Bare Ground (%): None

Estimated Litter Depth (inches): None

Average Vegetation Height (inches): 6-12

Dominant Plant Species (Common Names): Grass

Invasive Plant Species (Common Names):

Representative Photo(s):





Field Data Sheet





Field Data Sheet

Notes :

Do you need to report observations of another open field?

Yes



Field Data Sheet

Corresponding Point ID(s): 58

Anthropogenic Disturbance/Management Practices: None notable

Primary Open Field Cover Type: Pastureland

Estimated Grass Cover (%): 90-100%

Estimated Forb Cover (%): None

Estimated Woody Vegetation Cover (%): None

Estimated Bare Ground (%): None

Estimated Litter Depth (inches): None

Average Vegetation Height (inches): 12-18

Dominant Plant Species (Common Names): Grass

Invasive Plant Species (Common Names):

Representative Photo(s):





Field Data Sheet





Field Data Sheet

Notes :

Do you need to report observations of another open field?

Yes



Field Data Sheet

Corresponding Point ID(s): 57

Anthropogenic Disturbance/Management Practices: None notable

Primary Open Field Cover Type: Field Cropland (including hay, wheat, oats, etc.)

Estimated Grass Cover (%): 90-100%

Estimated Forb Cover (%): 1-10%

Estimated Woody Vegetation Cover (%): None

Estimated Bare Ground (%): None

Estimated Litter Depth (inches): None

Average Vegetation Height (inches): 18-24

Dominant Plant Species (Common Names): Grass, dandelion

Invasive Plant Species (Common Names):

Representative Photo(s):





Field Data Sheet





Field Data Sheet

Notes :

Do you need to report observations of another open field?

Yes



Field Data Sheet

Corresponding Point ID(s): 56

Anthropogenic Disturbance/Management Practices: Traffic Noise

Primary Open Field Cover Type: Row Cropland (Fallow)

Estimated Grass Cover (%): None

Estimated Forb Cover (%): 1-10%

Estimated Woody Vegetation Cover (%): None

Estimated Bare Ground (%): 90-100%

Estimated Litter Depth (inches): 0-1"

Average Vegetation Height (inches): 0-2

Dominant Plant Species (Common Names): Dead nettle

Invasive Plant Species (Common Names):

Representative Photo(s):





Field Data Sheet





Field Data Sheet

Notes :

Do you need to report observations of another open field?

Yes



Field Data Sheet

Corresponding Point ID(s): 59

Anthropogenic Disturbance/Management Practices: Traffic Noise

Primary Open Field Cover Type: Pastureland

Estimated Grass Cover (%): 90-100%

Estimated Forb Cover (%): None

Estimated Woody Vegetation Cover (%): None

Estimated Bare Ground (%): None

Estimated Litter Depth (inches): None

Average Vegetation Height (inches): 6-12

Dominant Plant Species (Common Names): Grass

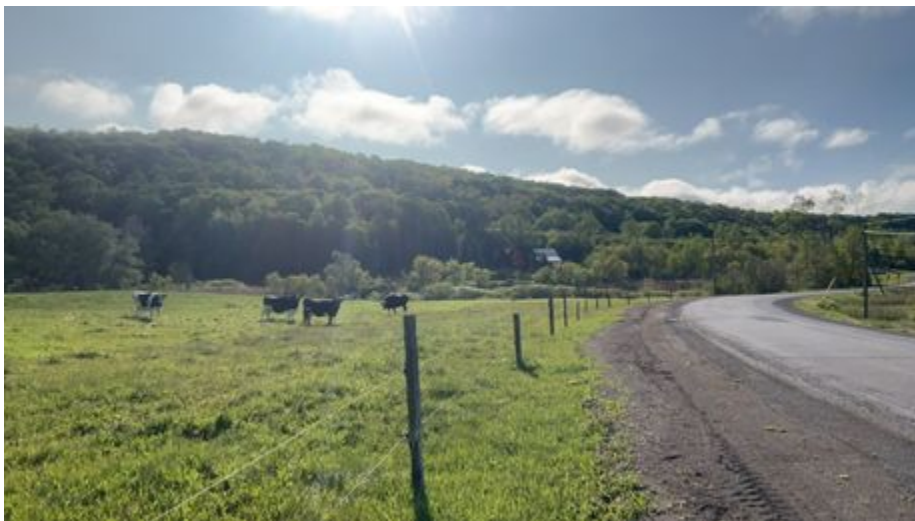
Invasive Plant Species (Common Names):

Representative Photo(s):





Field Data Sheet





Field Data Sheet

Notes :

Alternate point used at roadside due to cows

Do you need to report observations of another open field?

Yes



Field Data Sheet

Corresponding Point ID(s): 54

Anthropogenic Disturbance/Management Practices: None notable

Primary Open Field Cover Type: Row Cropland (Active)

Estimated Grass Cover (%): 1-10%

Estimated Forb Cover (%): None

Estimated Woody Vegetation Cover (%): None

Estimated Bare Ground (%): 90-100%

Estimated Litter Depth (inches): None

Average Vegetation Height (inches): 4-6

Dominant Plant Species (Common Names): Grass

Invasive Plant Species (Common Names): P

Representative Photo(s):





Field Data Sheet





Field Data Sheet

Notes :

Do you need to report observations of another open field?

No



Field Data Sheet

Weather Conditions at End of Survey

Temperature (°F): 42

Wind Speed (mph): 8 – 12 (Gentle Breeze; Leaves and Small twigs in constant motion)

Wind Direction: N

Cloud Cover: None (Clear)

Visibility: Good (10+ miles; clear)

Precipitation: None (Clear)

Weather Notes:

Were there any notable weather events/changes during the survey? No

Bird Observation Summary

Were any Endangered/Threatened Species observed?

No

Were any Species of Special Concern observed?

No

Were probable, possible, or confirmed breeding behaviors observed for any Listed Species (Endangered/Threatened/Special Concern)?

No

Were there additional photos documenting birds observed, habitat conditions, and/or other features of interest?

No

Additional Photo(s):

Were any alternate point count survey locations used due to access or visual constraints?

Yes



Field Data Sheet

Alternate Point Count Survey Locations: 59 and 61 due to livestock and fenced pastures

**Incidental bird species observed outside of timed point count surveys
(Alpha Codes or Common Names):**

Overall Survey Notes:



Field Data Sheet

Breeding Bird Survey

Submitted By: abutler@edrdpc.com

Submitted Time: May 26, 2023 8:32 AM

Survey Information

Project Name: Hoffman Falls

Survey Date: May 25, 2023

Surveyor Name: Anna Butler

Points Surveyed: 36-40, 69-80

Survey Start Time: 05:19

Survey End Time: 10:16

Weather Conditions at Start of Survey

Temperature (°F): 33

Wind Speed (mph): 1 – 3 (Light Air; Smoke drifts)

Wind Direction: NNW

Cloud Cover: None (Clear)

Visibility: Good (10+ miles; clear)

Precipitation: None (Clear)

Weather Notes:



Field Data Sheet

Open Field Condition Observations

Corresponding Point ID(s): 40

Anthropogenic Disturbance/Management Practices: None notable

Primary Open Field Cover Type: Row Cropland (Active)

Estimated Grass Cover (%): None

Estimated Forb Cover (%): 1-10%

Estimated Woody Vegetation Cover (%): None

Estimated Bare Ground (%): 90-100%

Estimated Litter Depth (inches): None

Average Vegetation Height (inches): 0-2

Dominant Plant Species (Common Names): Dock

Invasive Plant Species (Common Names):

Representative Photo(s):





Field Data Sheet





Field Data Sheet

Notes :

Do you need to report observations of another open field?

Yes



Field Data Sheet

Corresponding Point ID(s): 39

Anthropogenic Disturbance/Management Practices: None notable

Primary Open Field Cover Type: Field Cropland (including hay, wheat, oats, etc.)

Estimated Grass Cover (%): 25-50%

Estimated Forb Cover (%): 25-50%

Estimated Woody Vegetation Cover (%): None

Estimated Bare Ground (%): None

Estimated Litter Depth (inches): 0-1"

Average Vegetation Height (inches): 6-12

Dominant Plant Species (Common Names): Grass, soy

Invasive Plant Species (Common Names):

Representative Photo(s):





Field Data Sheet





Field Data Sheet

Notes :

Do you need to report observations of another open field?

Yes



Field Data Sheet

Corresponding Point ID(s): 38

Anthropogenic Disturbance/Management Practices: None notable

Primary Open Field Cover Type: Row Cropland (Active)

Estimated Grass Cover (%): None

Estimated Forb Cover (%): 10-25%

Estimated Woody Vegetation Cover (%): None

Estimated Bare Ground (%): 50-90%

Estimated Litter Depth (inches): None

Average Vegetation Height (inches): 0-2

Dominant Plant Species (Common Names): Corn, dandelion

Invasive Plant Species (Common Names):

Representative Photo(s):





Field Data Sheet





Field Data Sheet

Notes :

Do you need to report observations of another open field?

Yes



Field Data Sheet

Corresponding Point ID(s): 37

Anthropogenic Disturbance/Management Practices: None notable

Primary Open Field Cover Type: Row Cropland (Active)

Estimated Grass Cover (%): 1-10%

Estimated Forb Cover (%): 1-10%

Estimated Woody Vegetation Cover (%): None

Estimated Bare Ground (%): 50-90%

Estimated Litter Depth (inches): None

Average Vegetation Height (inches): 0-2

Dominant Plant Species (Common Names): Grass, corn

Invasive Plant Species (Common Names):

Representative Photo(s):





Field Data Sheet





Field Data Sheet

Notes :

Do you need to report observations of another open field?

Yes



Field Data Sheet

Corresponding Point ID(s): 36

Anthropogenic Disturbance/Management Practices: Traffic Noise

Primary Open Field Cover Type: Field Cropland (including hay, wheat, oats, etc.)

Estimated Grass Cover (%): 50-90%

Estimated Forb Cover (%): 10-25%

Estimated Woody Vegetation Cover (%): None

Estimated Bare Ground (%): 1-10%

Estimated Litter Depth (inches): 0-1"

Average Vegetation Height (inches): 12-18

Dominant Plant Species (Common Names): Grass, dandelion

Invasive Plant Species (Common Names):

Representative Photo(s):





Field Data Sheet





Field Data Sheet

Notes :

Do you need to report observations of another open field?

Yes



Field Data Sheet

Corresponding Point ID(s): 77

Anthropogenic Disturbance/Management Practices: Traffic Noise

Primary Open Field Cover Type: Field Cropland (including hay, wheat, oats, etc.)

Estimated Grass Cover (%): 50-90%

Estimated Forb Cover (%): 10-25%

Estimated Woody Vegetation Cover (%): None

Estimated Bare Ground (%): None

Estimated Litter Depth (inches): 0-1"

Average Vegetation Height (inches): 2-4

Dominant Plant Species (Common Names): Grass, dandelion, clover

Invasive Plant Species (Common Names):

Representative Photo(s):





Field Data Sheet





Field Data Sheet

Notes :

Hay has been cut

Do you need to report observations of another open field?

Yes



Field Data Sheet

Corresponding Point ID(s): 79

Anthropogenic Disturbance/Management Practices: Traffic Noise

Primary Open Field Cover Type: Row Cropland (Active)

Estimated Grass Cover (%): 1-10%

Estimated Forb Cover (%): None

Estimated Woody Vegetation Cover (%): None

Estimated Bare Ground (%): 90-100%

Estimated Litter Depth (inches): None

Average Vegetation Height (inches): 4-6

Dominant Plant Species (Common Names): Grass

Invasive Plant Species (Common Names):

Representative Photo(s):





Field Data Sheet





Field Data Sheet

Notes :

Do you need to report observations of another open field?

Yes



Field Data Sheet

Corresponding Point ID(s): 80

Anthropogenic Disturbance/Management Practices: Traffic Noise

Primary Open Field Cover Type: Field Cropland (including hay, wheat, oats, etc.)

Estimated Grass Cover (%): 25-50%

Estimated Forb Cover (%): 25-50%

Estimated Woody Vegetation Cover (%): None

Estimated Bare Ground (%): None

Estimated Litter Depth (inches): 0-1"

Average Vegetation Height (inches): 12-18

Dominant Plant Species (Common Names): Grass, dandelion, red clover

Invasive Plant Species (Common Names):

Representative Photo(s):





Field Data Sheet





Field Data Sheet

Notes :

Do you need to report observations of another open field?

Yes



Field Data Sheet

Corresponding Point ID(s): 78

Anthropogenic Disturbance/Management Practices: Traffic Noise

Primary Open Field Cover Type: Field Cropland (including hay, wheat, oats, etc.)

Estimated Grass Cover (%): 25-50%

Estimated Forb Cover (%): 25-50%

Estimated Woody Vegetation Cover (%): None

Estimated Bare Ground (%): None

Estimated Litter Depth (inches): 0-1"

Average Vegetation Height (inches): 2-4

Dominant Plant Species (Common Names): Grass, dandelion

Invasive Plant Species (Common Names):

Representative Photo(s):





Field Data Sheet





Field Data Sheet

Notes :

Hay has been cut

Do you need to report observations of another open field?

Yes



Field Data Sheet

Corresponding Point ID(s): 75

Anthropogenic Disturbance/Management Practices: Farm Equipment Noise

Primary Open Field Cover Type: Field Cropland (including hay, wheat, oats, etc.)

Estimated Grass Cover (%): None

Estimated Forb Cover (%): 90-100%

Estimated Woody Vegetation Cover (%): None

Estimated Bare Ground (%): None

Estimated Litter Depth (inches): 0-1"

Average Vegetation Height (inches): 18-24

Dominant Plant Species (Common Names): Alfalfa, dandelion

Invasive Plant Species (Common Names):

Representative Photo(s):





Field Data Sheet





Field Data Sheet

Notes :

Do you need to report observations of another open field?

Yes



Field Data Sheet

Corresponding Point ID(s): 73

Anthropogenic Disturbance/Management Practices: Farm Equipment Noise

Primary Open Field Cover Type: Row Cropland (Active)

Estimated Grass Cover (%): 10-25%

Estimated Forb Cover (%): None

Estimated Woody Vegetation Cover (%): None

Estimated Bare Ground (%): 50-90%

Estimated Litter Depth (inches): None

Average Vegetation Height (inches): 2-4

Dominant Plant Species (Common Names): Grass

Invasive Plant Species (Common Names):

Representative Photo(s):





Field Data Sheet





Field Data Sheet

Notes :

Do you need to report observations of another open field?

Yes



Field Data Sheet

Corresponding Point ID(s): 72

Anthropogenic Disturbance/Management Practices: Farm Equipment Noise

Primary Open Field Cover Type: Row Cropland (Active)

Estimated Grass Cover (%): 10-25%

Estimated Forb Cover (%): None

Estimated Woody Vegetation Cover (%): None

Estimated Bare Ground (%): 50-90%

Estimated Litter Depth (inches): None

Average Vegetation Height (inches): 2-4

Dominant Plant Species (Common Names): Grass

Invasive Plant Species (Common Names):

Representative Photo(s):





Field Data Sheet





Field Data Sheet

Notes :

Do you need to report observations of another open field?

Yes



Field Data Sheet

Corresponding Point ID(s): 74

Anthropogenic Disturbance/Management Practices: Farm Equipment Noise

Primary Open Field Cover Type: Field Cropland (including hay, wheat, oats, etc.)

Estimated Grass Cover (%): None

Estimated Forb Cover (%): 90-100%

Estimated Woody Vegetation Cover (%): None

Estimated Bare Ground (%): None

Estimated Litter Depth (inches): 0-1"

Average Vegetation Height (inches): 12-18

Dominant Plant Species (Common Names): Alfalfa, dandelion

Invasive Plant Species (Common Names):

Representative Photo(s):





Field Data Sheet





Field Data Sheet

Notes :

Do you need to report observations of another open field?

Yes



Field Data Sheet

Corresponding Point ID(s): 69

Anthropogenic Disturbance/Management Practices: Traffic Noise

Primary Open Field Cover Type: Field Cropland (including hay, wheat, oats, etc.)

Estimated Grass Cover (%): 50-90%

Estimated Forb Cover (%): 10-25%

Estimated Woody Vegetation Cover (%): None

Estimated Bare Ground (%): None

Estimated Litter Depth (inches): 0-1"

Average Vegetation Height (inches): 12-18

Dominant Plant Species (Common Names): Grass, dandelion

Invasive Plant Species (Common Names):

Representative Photo(s):





Field Data Sheet





Field Data Sheet

Notes :

Do you need to report observations of another open field?

Yes



Field Data Sheet

Corresponding Point ID(s): 70

Anthropogenic Disturbance/Management Practices: Traffic Noise

Primary Open Field Cover Type: Row Cropland (Active)

Estimated Grass Cover (%): None

Estimated Forb Cover (%): 1-10%

Estimated Woody Vegetation Cover (%): None

Estimated Bare Ground (%): 90-100%

Estimated Litter Depth (inches): None

Average Vegetation Height (inches): 0-2

Dominant Plant Species (Common Names): Corn

Invasive Plant Species (Common Names):

Representative Photo(s):





Field Data Sheet





Field Data Sheet

Notes :

Do you need to report observations of another open field?

Yes



Field Data Sheet

Corresponding Point ID(s): 71

Anthropogenic Disturbance/Management Practices: Traffic Noise

Primary Open Field Cover Type: Field Cropland (including hay, wheat, oats, etc.)

Estimated Grass Cover (%): 25-50%

Estimated Forb Cover (%): 25-50%

Estimated Woody Vegetation Cover (%): None

Estimated Bare Ground (%): None

Estimated Litter Depth (inches): 0-1"

Average Vegetation Height (inches): 12-18

Dominant Plant Species (Common Names): Grass, dandelion, alfalfa

Invasive Plant Species (Common Names):

Representative Photo(s):





Field Data Sheet





Field Data Sheet

Notes :

Do you need to report observations of another open field?

Yes



Field Data Sheet

Corresponding Point ID(s): 76

Anthropogenic Disturbance/Management Practices: Traffic Noise

Primary Open Field Cover Type: Field Cropland (including hay, wheat, oats, etc.)

Estimated Grass Cover (%): 25-50%

Estimated Forb Cover (%): 50-90%

Estimated Woody Vegetation Cover (%): None

Estimated Bare Ground (%): None

Estimated Litter Depth (inches): 0-1"

Average Vegetation Height (inches): 12-18

Dominant Plant Species (Common Names): Dandelion, alfalfa, grass

Invasive Plant Species (Common Names):

Representative Photo(s):





Field Data Sheet





Field Data Sheet

Notes :

Do you need to report observations of another open field?

Yes



Field Data Sheet

Corresponding Point ID(s): 76.1

Anthropogenic Disturbance/Management Practices: Traffic Noise

Primary Open Field Cover Type: Successional Old Field

Estimated Grass Cover (%): 25-50%

Estimated Forb Cover (%): 10-25%

Estimated Woody Vegetation Cover (%): 1-10%

Estimated Bare Ground (%): None

Estimated Litter Depth (inches): 1-3"

Average Vegetation Height (inches): 12-18

Dominant Plant Species (Common Names): Grass, dandelion, solidago

Invasive Plant Species (Common Names): Honeysuckle

Representative Photo(s):





Field Data Sheet





Field Data Sheet

Notes :

Do you need to report observations of another open field?



Field Data Sheet

Weather Conditions at End of Survey

Temperature (°F): 49

Wind Speed (mph): 4 – 7 (Light Breeze; Leaves rustle)

Wind Direction: N

Cloud Cover: Mostly Clear (10-25%)

Visibility: Good (10+ miles; clear)

Precipitation: None (Clear)

Weather Notes:

Were there any notable weather events/changes during the survey? No

Bird Observation Summary

Were any Endangered/Threatened Species observed?

No

Were any Species of Special Concern observed?

No

Were probable, possible, or confirmed breeding behaviors observed for any Listed Species (Endangered/Threatened/Special Concern)?

No

Were there additional photos documenting birds observed, habitat conditions, and/or other features of interest?

No

Additional Photo(s):

Were any alternate point count survey locations used due to access or visual constraints?

No

Alternate Point Count Survey Locations:



Field Data Sheet

**Incidental bird species observed outside of timed point count surveys
(Alpha Codes or Common Names):**

GBHE

Overall Survey Notes:



Field Data Sheet

Breeding Bird Survey

Submitted By: fsimeone@edrdpc.com

Submitted Time: May 29, 2023 11:03 AM

Survey Information

Project Name: Hoffman Falls

Survey Date: May 25, 2023

Surveyor Name: Frank Simeone

Points Surveyed: 18-34

Survey Start Time: 05:07

Survey End Time: 09:53

Weather Conditions at Start of Survey

Temperature (°F): 33

Wind Speed (mph): 1 – 3 (Light Air; Smoke drifts)

Wind Direction: NW

Cloud Cover: None (Clear)

Visibility: Good (10+ miles; clear)

Precipitation: None (Clear)

Weather Notes:



Field Data Sheet

Open Field Condition Observations

Corresponding Point ID(s): 18

Anthropogenic Disturbance/Management Practices: None notable

Primary Open Field Cover Type: Field Cropland (including hay, wheat, oats, etc.)

Estimated Grass Cover (%): 50-90%

Estimated Forb Cover (%): 10-25%

Estimated Woody Vegetation Cover (%): None

Estimated Bare Ground (%): None

Estimated Litter Depth (inches): 0-1"

Average Vegetation Height (inches): 30-36

Dominant Plant Species (Common Names): Grass, clover, dandelion

Invasive Plant Species (Common Names):

Representative Photo(s):





Field Data Sheet





Field Data Sheet

Notes :

Do you need to report observations of another open field?

Yes



Field Data Sheet

Corresponding Point ID(s): 21

Anthropogenic Disturbance/Management Practices: None notable

Primary Open Field Cover Type: Row Cropland (Active)

Estimated Grass Cover (%): 10-25%

Estimated Forb Cover (%): 1-10%

Estimated Woody Vegetation Cover (%): None

Estimated Bare Ground (%): 50-90%

Estimated Litter Depth (inches): 0-1"

Average Vegetation Height (inches): 12-18

Dominant Plant Species (Common Names): Grass, clove, dandelion, bedstraw,

Invasive Plant Species (Common Names):

Representative Photo(s):





Field Data Sheet





Field Data Sheet

Notes :

Corn and hay field

Do you need to report observations of another open field?

Yes



Field Data Sheet

Corresponding Point ID(s): 20

Anthropogenic Disturbance/Management Practices: ATV/Other Vehicle Noise

Primary Open Field Cover Type: Row Cropland (Active)

Estimated Grass Cover (%): None

Estimated Forb Cover (%): None

Estimated Woody Vegetation Cover (%): None

Estimated Bare Ground (%): 90-100%

Estimated Litter Depth (inches): 0-1"

Average Vegetation Height (inches): 0 (None)

Dominant Plant Species (Common Names):

Invasive Plant Species (Common Names):

Representative Photo(s):





Field Data Sheet





Field Data Sheet

Notes :

Do you need to report observations of another open field?

Yes



Field Data Sheet

Corresponding Point ID(s): 19

Anthropogenic Disturbance/Management Practices: ATV/Other Vehicle Noise

Primary Open Field Cover Type: Row Cropland (Active)

Estimated Grass Cover (%): None

Estimated Forb Cover (%): None

Estimated Woody Vegetation Cover (%): None

Estimated Bare Ground (%): 90-100%

Estimated Litter Depth (inches): 0-1"

Average Vegetation Height (inches): 0 (None)

Dominant Plant Species (Common Names): Corn litter

Invasive Plant Species (Common Names):

Representative Photo(s):





Field Data Sheet





Field Data Sheet

Notes :

Do you need to report observations of another open field?

Yes



Field Data Sheet

Corresponding Point ID(s): 24

Anthropogenic Disturbance/Management Practices: ATV/Other Vehicle Noise

Primary Open Field Cover Type: Successional Old Field

Estimated Grass Cover (%): 25-50%

Estimated Forb Cover (%): 10-25%

Estimated Woody Vegetation Cover (%): 25-50%

Estimated Bare Ground (%): 1-10%

Estimated Litter Depth (inches): 0-1"

Average Vegetation Height (inches): 0-2

Dominant Plant Species (Common Names): Dogwood, grass, clover, bedstraw, goldenrod, pine,

Invasive Plant Species (Common Names):

Representative Photo(s):





Field Data Sheet





Field Data Sheet

Notes :

Do you need to report observations of another open field?

Yes



Field Data Sheet

Corresponding Point ID(s): 29

Anthropogenic Disturbance/Management Practices: None notable

Primary Open Field Cover Type: Row Cropland (Active)

Estimated Grass Cover (%): 10-25%

Estimated Forb Cover (%): 1-10%

Estimated Woody Vegetation Cover (%): 25-50%

Estimated Bare Ground (%): 50-90%

Estimated Litter Depth (inches): None

Average Vegetation Height (inches): 2-4

Dominant Plant Species (Common Names): Grass, wintercress, white campion.

Invasive Plant Species (Common Names):

Representative Photo(s):





Field Data Sheet





Field Data Sheet

Notes :

Do you need to report observations of another open field?

Yes



Field Data Sheet

Corresponding Point ID(s): 28

Anthropogenic Disturbance/Management Practices: None notable

Primary Open Field Cover Type: Row Cropland (Active)

Estimated Grass Cover (%): 10-25%

Estimated Forb Cover (%): 1-10%

Estimated Woody Vegetation Cover (%): None

Estimated Bare Ground (%): 50-90%

Estimated Litter Depth (inches): None

Average Vegetation Height (inches): 2-4

Dominant Plant Species (Common Names): Grass, wintercress, vetch

Invasive Plant Species (Common Names):

Representative Photo(s):





Field Data Sheet





Field Data Sheet

Notes :

Do you need to report observations of another open field?

Yes



Field Data Sheet

Corresponding Point ID(s): 27

Anthropogenic Disturbance/Management Practices: None notable

Primary Open Field Cover Type: Row Cropland (Active)

Estimated Grass Cover (%): 10-25%

Estimated Forb Cover (%): 1-10%

Estimated Woody Vegetation Cover (%): None

Estimated Bare Ground (%): 50-90%

Estimated Litter Depth (inches): None

Average Vegetation Height (inches): 2-4

Dominant Plant Species (Common Names): Grass, wintercress, vetch

Invasive Plant Species (Common Names):

Representative Photo(s):





Field Data Sheet





Field Data Sheet

Notes :

Do you need to report observations of another open field?

Yes



Field Data Sheet

Corresponding Point ID(s): 33.1

Anthropogenic Disturbance/Management Practices: None notable

Primary Open Field Cover Type: Pastureland

Estimated Grass Cover (%): 50-90%

Estimated Forb Cover (%): 10-25%

Estimated Woody Vegetation Cover (%): None

Estimated Bare Ground (%): None

Estimated Litter Depth (inches): 0-1"

Average Vegetation Height (inches): 6-12

Dominant Plant Species (Common Names): Grass, clover, buttercup,

Invasive Plant Species (Common Names):

Representative Photo(s):





Field Data Sheet





Field Data Sheet

Notes :

Do you need to report observations of another open field?

Yes



Field Data Sheet

Corresponding Point ID(s): 32

Anthropogenic Disturbance/Management Practices: None notable

Primary Open Field Cover Type: Field Cropland (including hay, wheat, oats, etc.)

Estimated Grass Cover (%): 50-90%

Estimated Forb Cover (%): 1-10%

Estimated Woody Vegetation Cover (%): None

Estimated Bare Ground (%): None

Estimated Litter Depth (inches): 0-1"

Average Vegetation Height (inches): 6-12

Dominant Plant Species (Common Names): Grass, clover, dandelion, bedstraw, wintercress

Invasive Plant Species (Common Names):

Representative Photo(s):





Field Data Sheet





Field Data Sheet

Notes :

Do you need to report observations of another open field?

Yes



Field Data Sheet

Corresponding Point ID(s): 31

Anthropogenic Disturbance/Management Practices: None notable

Primary Open Field Cover Type: Field Cropland (including hay, wheat, oats, etc.)

Estimated Grass Cover (%): 50-90%

Estimated Forb Cover (%): 10-25%

Estimated Woody Vegetation Cover (%): None

Estimated Bare Ground (%): 1-10%

Estimated Litter Depth (inches): 0-1"

Average Vegetation Height (inches): 6-12

Dominant Plant Species (Common Names): Grass, clover, dandelion, bedstraw, buttercup

Invasive Plant Species (Common Names):

Representative Photo(s):





Field Data Sheet





Field Data Sheet

Notes :

Do you need to report observations of another open field?

Yes



Field Data Sheet

Corresponding Point ID(s): 30

Anthropogenic Disturbance/Management Practices: None notable

Primary Open Field Cover Type: Field Cropland (including hay, wheat, oats, etc.)

Estimated Grass Cover (%): 50-90%

Estimated Forb Cover (%): 1-10%

Estimated Woody Vegetation Cover (%): None

Estimated Bare Ground (%): None

Estimated Litter Depth (inches): 0-1"

Average Vegetation Height (inches): 6-12

Dominant Plant Species (Common Names): Grass, clover, dandelion, bedstraw, buttercup,

Invasive Plant Species (Common Names):

Representative Photo(s):





Field Data Sheet





Field Data Sheet

Notes :

Do you need to report observations of another open field?

Yes



Field Data Sheet

Corresponding Point ID(s): 33

Anthropogenic Disturbance/Management Practices: Farm Equipment Noise

Primary Open Field Cover Type: Field Cropland (including hay, wheat, oats, etc.)

Estimated Grass Cover (%): 50-90%

Estimated Forb Cover (%): 10-25%

Estimated Woody Vegetation Cover (%): None

Estimated Bare Ground (%): None

Estimated Litter Depth (inches): 0-1"

Average Vegetation Height (inches): 12-18

Dominant Plant Species (Common Names): Grass, clover, dandelion, bedstraw, buttercup,

Invasive Plant Species (Common Names):

Representative Photo(s):





Field Data Sheet





Field Data Sheet

Notes :

Do you need to report observations of another open field?

Yes



Field Data Sheet

Corresponding Point ID(s): 34

Anthropogenic Disturbance/Management Practices: Farm Equipment Noise

Primary Open Field Cover Type: Row Cropland (Active)

Estimated Grass Cover (%): 1-10%

Estimated Forb Cover (%): None

Estimated Woody Vegetation Cover (%): None

Estimated Bare Ground (%): 90-100%

Estimated Litter Depth (inches): None

Average Vegetation Height (inches): 0-2

Dominant Plant Species (Common Names): Corn

Invasive Plant Species (Common Names):

Representative Photo(s):





Field Data Sheet





Field Data Sheet

Notes :

Do you need to report observations of another open field?

No

This figure has been redacted from this publicly available document because it contains protected/confidential information regarding the proposed facility location and/or the detailed locations of NYS threatened or endangered species.



Field Data Sheet

Incidental bird species observed outside of timed point count surveys

(Alpha Codes or Common Names):

DEJU, EAPH, EABL, SWSP, INBU

Overall Survey Notes:



Field Data Sheet

Breeding Bird Survey

Submitted By: bsmith@edrdpc.com

Submitted Time: May 30, 2023 9:46 AM

Survey Information

Project Name: Hoffman Falls

Survey Date: May 30, 2023

Surveyor Name: Brooke Smith

Points Surveyed: 36-50.1

Survey Start Time: 05:15

Survey End Time: 09:34

Weather Conditions at Start of Survey

Temperature (°F): 57

Wind Speed (mph): 8 – 12 (Gentle Breeze; Leaves and Small twigs in constant motion)

Wind Direction: SSE

Cloud Cover: None (Clear)

Visibility: Good (10+ miles; clear)

Precipitation: None (Clear)

Weather Notes:



Field Data Sheet

Open Field Condition Observations

Corresponding Point ID(s): 50.1

Anthropogenic Disturbance/Management Practices: None notable

Primary Open Field Cover Type: Field Cropland (including hay, wheat, oats, etc.)

Estimated Grass Cover (%): 90-100%

Estimated Forb Cover (%): None

Estimated Woody Vegetation Cover (%): None

Estimated Bare Ground (%): None

Estimated Litter Depth (inches): None

Average Vegetation Height (inches): 12-18

Dominant Plant Species (Common Names): Grass

Invasive Plant Species (Common Names):

Representative Photo(s):





Field Data Sheet





Field Data Sheet

Notes :

Do you need to report observations of another open field?

Yes



Field Data Sheet

Corresponding Point ID(s): 50

Anthropogenic Disturbance/Management Practices: None notable

Primary Open Field Cover Type: Pastureland

Estimated Grass Cover (%): 90-100%

Estimated Forb Cover (%): 1-10%

Estimated Woody Vegetation Cover (%): None

Estimated Bare Ground (%): None

Estimated Litter Depth (inches): None

Average Vegetation Height (inches): 6-12

Dominant Plant Species (Common Names): Grass and dandelion

Invasive Plant Species (Common Names):

Representative Photo(s):





Field Data Sheet





Field Data Sheet

Notes :

Do you need to report observations of another open field?

Yes



Field Data Sheet

Corresponding Point ID(s): 49

Anthropogenic Disturbance/Management Practices: None notable

Primary Open Field Cover Type: Row Cropland (Fallow)

Estimated Grass Cover (%): 1-10%

Estimated Forb Cover (%): 1-10%

Estimated Woody Vegetation Cover (%): None

Estimated Bare Ground (%): 90-100%

Estimated Litter Depth (inches): 0-1"

Average Vegetation Height (inches): 4-6

Dominant Plant Species (Common Names): Grass, dandelion

Invasive Plant Species (Common Names):

Representative Photo(s):





Field Data Sheet





Field Data Sheet

Notes :

Do you need to report observations of another open field?

Yes



Field Data Sheet

Corresponding Point ID(s): 40

Anthropogenic Disturbance/Management Practices: None notable

Primary Open Field Cover Type: Row Cropland (Fallow)

Estimated Grass Cover (%): None

Estimated Forb Cover (%): 1-10%

Estimated Woody Vegetation Cover (%): None

Estimated Bare Ground (%): 90-100%

Estimated Litter Depth (inches): None

Average Vegetation Height (inches): 12-18

Dominant Plant Species (Common Names):

Invasive Plant Species (Common Names):

Representative Photo(s):





Field Data Sheet





Field Data Sheet

Notes :

Do you need to report observations of another open field?

Yes



Field Data Sheet

Corresponding Point ID(s): 41

Anthropogenic Disturbance/Management Practices: None notable

Primary Open Field Cover Type: Successional Old Field

Estimated Grass Cover (%): 25-50%

Estimated Forb Cover (%): 25-50%

Estimated Woody Vegetation Cover (%): None

Estimated Bare Ground (%): None

Estimated Litter Depth (inches): None

Average Vegetation Height (inches): 18-24

Dominant Plant Species (Common Names): Graas, dandelion

Invasive Plant Species (Common Names):

Representative Photo(s):





Field Data Sheet





Field Data Sheet

Notes :

Do you need to report observations of another open field?

Yes



Field Data Sheet

Corresponding Point ID(s): 39

Anthropogenic Disturbance/Management Practices: None notable

Primary Open Field Cover Type: Field Cropland (including hay, wheat, oats, etc.)

Estimated Grass Cover (%): 90-100%

Estimated Forb Cover (%): None

Estimated Woody Vegetation Cover (%): None

Estimated Bare Ground (%): None

Estimated Litter Depth (inches): None

Average Vegetation Height (inches): 18-24

Dominant Plant Species (Common Names): Grass

Invasive Plant Species (Common Names):

Representative Photo(s):





Field Data Sheet





Field Data Sheet

Notes :

Do you need to report observations of another open field?

Yes



Field Data Sheet

Corresponding Point ID(s): 38

Anthropogenic Disturbance/Management Practices: None notable

Primary Open Field Cover Type: Row Cropland (Active)

Estimated Grass Cover (%): None

Estimated Forb Cover (%): 1-10%

Estimated Woody Vegetation Cover (%): None

Estimated Bare Ground (%): 90-100%

Estimated Litter Depth (inches): None

Average Vegetation Height (inches): 0-2

Dominant Plant Species (Common Names):

Invasive Plant Species (Common Names):

Representative Photo(s):





Field Data Sheet





Field Data Sheet

Notes :

Do you need to report observations of another open field?

Yes



Field Data Sheet

Corresponding Point ID(s): 37

Anthropogenic Disturbance/Management Practices: None notable

Primary Open Field Cover Type: Row Cropland (Active)

Estimated Grass Cover (%): None

Estimated Forb Cover (%): 1-10%

Estimated Woody Vegetation Cover (%): None

Estimated Bare Ground (%): 90-100%

Estimated Litter Depth (inches): None

Average Vegetation Height (inches): 0-2

Dominant Plant Species (Common Names):

Invasive Plant Species (Common Names):

Representative Photo(s):





Field Data Sheet





Field Data Sheet

Notes :

Do you need to report observations of another open field?

Yes



Field Data Sheet

Corresponding Point ID(s): 36

Anthropogenic Disturbance/Management Practices: None notable

Primary Open Field Cover Type: Row Cropland (Active)

Estimated Grass Cover (%): None

Estimated Forb Cover (%): 1-10%

Estimated Woody Vegetation Cover (%): None

Estimated Bare Ground (%): 90-100%

Estimated Litter Depth (inches): None

Average Vegetation Height (inches): 0-2

Dominant Plant Species (Common Names):

Invasive Plant Species (Common Names):

Representative Photo(s):





Field Data Sheet





Field Data Sheet

Notes :

Do you need to report observations of another open field?

Yes



Field Data Sheet

Corresponding Point ID(s): 47

Anthropogenic Disturbance/Management Practices: None notable

Primary Open Field Cover Type: Field Cropland (including hay, wheat, oats, etc.)

Estimated Grass Cover (%): 90-100%

Estimated Forb Cover (%): None

Estimated Woody Vegetation Cover (%): None

Estimated Bare Ground (%): None

Estimated Litter Depth (inches): None

Average Vegetation Height (inches): 18-24

Dominant Plant Species (Common Names): Grass

Invasive Plant Species (Common Names):

Representative Photo(s):





Field Data Sheet





Field Data Sheet

Notes :

Do you need to report observations of another open field?

Yes



Field Data Sheet

Corresponding Point ID(s): 48

Anthropogenic Disturbance/Management Practices: None notable

Primary Open Field Cover Type: Row Cropland (Active)

Estimated Grass Cover (%): None

Estimated Forb Cover (%): None

Estimated Woody Vegetation Cover (%): None

Estimated Bare Ground (%): 50-90%

Estimated Litter Depth (inches): None

Average Vegetation Height (inches): 0 (None)

Dominant Plant Species (Common Names):

Invasive Plant Species (Common Names):

Representative Photo(s):





Field Data Sheet





Field Data Sheet

Notes :

Do you need to report observations of another open field?

Yes



Field Data Sheet

Corresponding Point ID(s): 46

Anthropogenic Disturbance/Management Practices: None notable

Primary Open Field Cover Type: Field Cropland (including hay, wheat, oats, etc.)

Estimated Grass Cover (%): 90-100%

Estimated Forb Cover (%): None

Estimated Woody Vegetation Cover (%): None

Estimated Bare Ground (%): None

Estimated Litter Depth (inches): 0-1"

Average Vegetation Height (inches): 0-2

Dominant Plant Species (Common Names): Grass

Invasive Plant Species (Common Names):

Representative Photo(s):





Field Data Sheet





Field Data Sheet

Notes :

Do you need to report observations of another open field?

Yes



Field Data Sheet

Corresponding Point ID(s): 42

Anthropogenic Disturbance/Management Practices: None notable

Primary Open Field Cover Type: Field Cropland (including hay, wheat, oats, etc.)

Estimated Grass Cover (%): 90-100%

Estimated Forb Cover (%): None

Estimated Woody Vegetation Cover (%): None

Estimated Bare Ground (%): None

Estimated Litter Depth (inches): None

Average Vegetation Height (inches): 0-2

Dominant Plant Species (Common Names): Grass

Invasive Plant Species (Common Names):

Representative Photo(s):





Field Data Sheet





Field Data Sheet

Notes :

Do you need to report observations of another open field?

Yes



Field Data Sheet

Corresponding Point ID(s): 43

Anthropogenic Disturbance/Management Practices: None notable

Primary Open Field Cover Type: Field Cropland (including hay, wheat, oats, etc.)

Estimated Grass Cover (%): 90-100%

Estimated Forb Cover (%): None

Estimated Woody Vegetation Cover (%): None

Estimated Bare Ground (%): None

Estimated Litter Depth (inches): None

Average Vegetation Height (inches): 0-2

Dominant Plant Species (Common Names): Grass

Invasive Plant Species (Common Names):

Representative Photo(s):





Field Data Sheet





Field Data Sheet

Notes :

Do you need to report observations of another open field?

Yes



Field Data Sheet

Corresponding Point ID(s): 44

Anthropogenic Disturbance/Management Practices: None notable

Primary Open Field Cover Type: Field Cropland (including hay, wheat, oats, etc.)

Estimated Grass Cover (%): 90-100%

Estimated Forb Cover (%): None

Estimated Woody Vegetation Cover (%): None

Estimated Bare Ground (%): None

Estimated Litter Depth (inches): None

Average Vegetation Height (inches): 0-2

Dominant Plant Species (Common Names): Grass

Invasive Plant Species (Common Names):

Representative Photo(s):





Field Data Sheet





Field Data Sheet

Notes :

Do you need to report observations of another open field?

Yes



Field Data Sheet

Corresponding Point ID(s): 45

Anthropogenic Disturbance/Management Practices: None notable

Primary Open Field Cover Type: Row Cropland (Fallow)

Estimated Grass Cover (%): None

Estimated Forb Cover (%): 1-10%

Estimated Woody Vegetation Cover (%): None

Estimated Bare Ground (%): 50-90%

Estimated Litter Depth (inches): None

Average Vegetation Height (inches): 4-6

Dominant Plant Species (Common Names): clover

Invasive Plant Species (Common Names):

Representative Photo(s):





Field Data Sheet





Field Data Sheet

Notes :

Do you need to report observations of another open field?

No



Field Data Sheet

Weather Conditions at End of Survey

Temperature (°F): 65

Wind Speed (mph): 4 – 7 (Light Breeze; Leaves rustle)

Wind Direction: S

Cloud Cover: None (Clear)

Visibility: Good (10+ miles; clear)

Precipitation: None (Clear)

Weather Notes:

Were there any notable weather events/changes during the survey? No

Bird Observation Summary

Were any Endangered/Threatened Species observed?

No

Were any Species of Special Concern observed?

No

Were probable, possible, or confirmed breeding behaviors observed for any Listed Species (Endangered/Threatened/Special Concern)?

No

Were there additional photos documenting birds observed, habitat conditions, and/or other features of interest?

No

Additional Photo(s):

Were any alternate point count survey locations used due to access or visual constraints?

No

Alternate Point Count Survey Locations:



Field Data Sheet

**Incidental bird species observed outside of timed point count surveys
(Alpha Codes or Common Names):**

Overall Survey Notes:



Field Data Sheet

Breeding Bird Survey

Submitted By: fsimeone@edrdpc.com

Submitted Time: May 31, 2023 1:22 PM

Survey Information

Project Name: Hoffman Falls

Survey Date: May 31, 2023

Surveyor Name: Frank Simeone

Points Surveyed: 1-17

Survey Start Time: 04:58

Survey End Time: 10:16

Weather Conditions at Start of Survey

Temperature (°F): 56

Wind Speed (mph): 0 – 1 (Calm; Smoke rises vertically)

Wind Direction: S

Cloud Cover: Mostly Clear (10-25%)

Visibility: Good (10+ miles; clear)

Precipitation: None (Clear)

Weather Notes:



Field Data Sheet

Open Field Condition Observations

Corresponding Point ID(s): 9

Anthropogenic Disturbance/Management Practices: None notable

Primary Open Field Cover Type: Row Cropland (Active)

Estimated Grass Cover (%): None

Estimated Forb Cover (%): None

Estimated Woody Vegetation Cover (%): None

Estimated Bare Ground (%): 90-100%

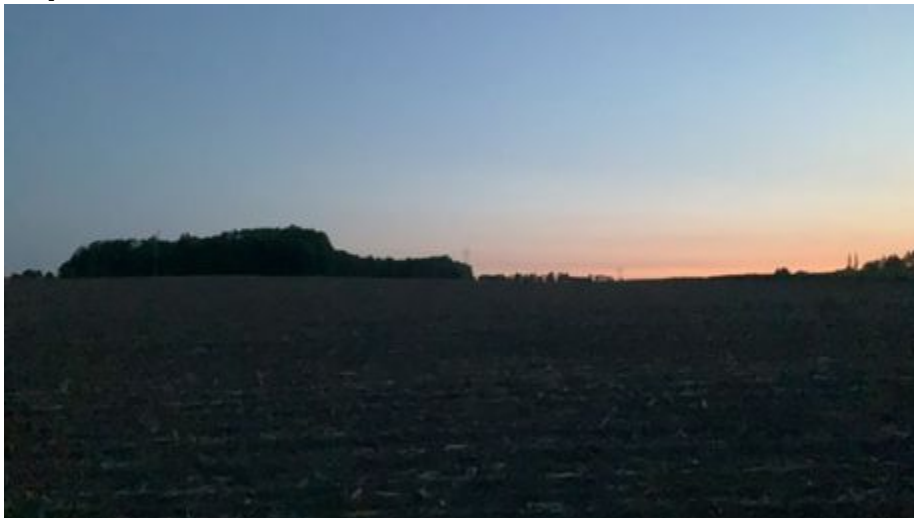
Estimated Litter Depth (inches): 0-1"

Average Vegetation Height (inches): 0 (None)

Dominant Plant Species (Common Names): Corn litter

Invasive Plant Species (Common Names):

Representative Photo(s):





Field Data Sheet





Field Data Sheet

Notes :

Do you need to report observations of another open field?

Yes



Field Data Sheet

Corresponding Point ID(s): 8

Anthropogenic Disturbance/Management Practices: ATV/Other Vehicle Noise

Primary Open Field Cover Type: Row Cropland (Active)

Estimated Grass Cover (%): 1-10%

Estimated Forb Cover (%): None

Estimated Woody Vegetation Cover (%): None

Estimated Bare Ground (%): None

Estimated Litter Depth (inches): None

Average Vegetation Height (inches): 0-2

Dominant Plant Species (Common Names): Corn

Invasive Plant Species (Common Names):

Representative Photo(s):





Field Data Sheet





Field Data Sheet

Notes :

Do you need to report observations of another open field?

Yes



Field Data Sheet

Corresponding Point ID(s): 7

Anthropogenic Disturbance/Management Practices: ATV/Other Vehicle Noise

Primary Open Field Cover Type: Row Cropland (Active)

Estimated Grass Cover (%): 1-10%

Estimated Forb Cover (%): None

Estimated Woody Vegetation Cover (%): None

Estimated Bare Ground (%): 90-100%

Estimated Litter Depth (inches): 0-1"

Average Vegetation Height (inches): 0-2

Dominant Plant Species (Common Names): Corn

Invasive Plant Species (Common Names):

Representative Photo(s):





Field Data Sheet





Field Data Sheet

Notes :

Do you need to report observations of another open field?

Yes



Field Data Sheet

Corresponding Point ID(s): 7.1

Anthropogenic Disturbance/Management Practices: ATV/Other Vehicle Noise

Primary Open Field Cover Type: Row Cropland (Active)

Estimated Grass Cover (%): 1-10%

Estimated Forb Cover (%): None

Estimated Woody Vegetation Cover (%): None

Estimated Bare Ground (%): 90-100%

Estimated Litter Depth (inches): 0-1"

Average Vegetation Height (inches): 0-2

Dominant Plant Species (Common Names): Corn

Invasive Plant Species (Common Names):

Representative Photo(s):





Field Data Sheet





Field Data Sheet

Notes :

Do you need to report observations of another open field?

Yes



Field Data Sheet

Corresponding Point ID(s): 10

Anthropogenic Disturbance/Management Practices: None notable

Primary Open Field Cover Type: Row Cropland (Active)

Estimated Grass Cover (%): 1-10%

Estimated Forb Cover (%): None

Estimated Woody Vegetation Cover (%): None

Estimated Bare Ground (%): 90-100%

Estimated Litter Depth (inches): 0-1"

Average Vegetation Height (inches): 0-2

Dominant Plant Species (Common Names): Corn

Invasive Plant Species (Common Names):

Representative Photo(s):





Field Data Sheet





Field Data Sheet

Notes :

Do you need to report observations of another open field?

Yes



Field Data Sheet

Corresponding Point ID(s): 11

Anthropogenic Disturbance/Management Practices: ATV/Other Vehicle Noise

Primary Open Field Cover Type: Row Cropland (Active)

Estimated Grass Cover (%): 1-10%

Estimated Forb Cover (%): None

Estimated Woody Vegetation Cover (%): None

Estimated Bare Ground (%): 90-100%

Estimated Litter Depth (inches): 0-1"

Average Vegetation Height (inches): 0-2

Dominant Plant Species (Common Names): Corn

Invasive Plant Species (Common Names):

Representative Photo(s):





Field Data Sheet





Field Data Sheet

Notes :

Do you need to report observations of another open field?

Yes



Field Data Sheet

Corresponding Point ID(s): 1

Anthropogenic Disturbance/Management Practices: ATV/Other Vehicle Noise

Primary Open Field Cover Type: Row Cropland (Active)

Estimated Grass Cover (%): None

Estimated Forb Cover (%): None

Estimated Woody Vegetation Cover (%): None

Estimated Bare Ground (%): 90-100%

Estimated Litter Depth (inches): 0-1"

Average Vegetation Height (inches): 0 (None)

Dominant Plant Species (Common Names):

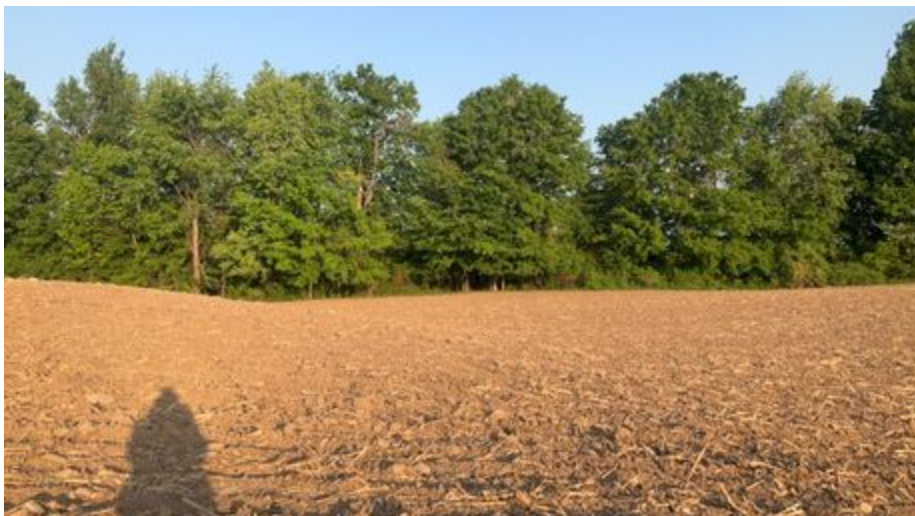
Invasive Plant Species (Common Names):

Representative Photo(s):





Field Data Sheet





Field Data Sheet

Notes :

Do you need to report observations of another open field?

Yes



Field Data Sheet

Corresponding Point ID(s): 2

Anthropogenic Disturbance/Management Practices: ATV/Other Vehicle Noise

Primary Open Field Cover Type: Row Cropland (Active)

Estimated Grass Cover (%): None

Estimated Forb Cover (%): None

Estimated Woody Vegetation Cover (%): None

Estimated Bare Ground (%): 90-100%

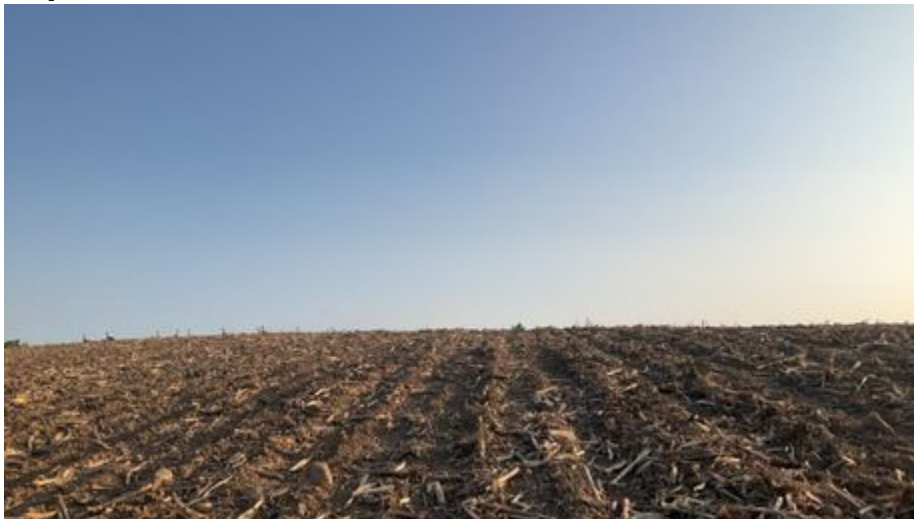
Estimated Litter Depth (inches): 0-1"

Average Vegetation Height (inches): 0 (None)

Dominant Plant Species (Common Names):

Invasive Plant Species (Common Names):

Representative Photo(s):





Field Data Sheet





Field Data Sheet

Notes :

Do you need to report observations of another open field?

Yes



Field Data Sheet

Corresponding Point ID(s): 5

Anthropogenic Disturbance/Management Practices: ATV/Other Vehicle Noise

Primary Open Field Cover Type: Row Cropland (Active)

Estimated Grass Cover (%): None

Estimated Forb Cover (%): None

Estimated Woody Vegetation Cover (%): None

Estimated Bare Ground (%): 90-100%

Estimated Litter Depth (inches): 0-1"

Average Vegetation Height (inches):

Dominant Plant Species (Common Names):

Invasive Plant Species (Common Names):

Representative Photo(s):





Field Data Sheet





Field Data Sheet

Notes :

Do you need to report observations of another open field?

Yes



Field Data Sheet

Corresponding Point ID(s): 3

Anthropogenic Disturbance/Management Practices: ATV/Other Vehicle Noise

Primary Open Field Cover Type: Row Cropland (Active)

Estimated Grass Cover (%): None

Estimated Forb Cover (%): None

Estimated Woody Vegetation Cover (%): None

Estimated Bare Ground (%): 90-100%

Estimated Litter Depth (inches): 0-1"

Average Vegetation Height (inches): 0 (None)

Dominant Plant Species (Common Names):

Invasive Plant Species (Common Names):

Representative Photo(s):





Field Data Sheet





Field Data Sheet

Notes :

Do you need to report observations of another open field?

Yes



Field Data Sheet

Corresponding Point ID(s): 4

Anthropogenic Disturbance/Management Practices: ATV/Other Vehicle Noise

Primary Open Field Cover Type: Row Cropland (Active)

Estimated Grass Cover (%): None

Estimated Forb Cover (%): None

Estimated Woody Vegetation Cover (%): None

Estimated Bare Ground (%): 90-100%

Estimated Litter Depth (inches): 0-1"

Average Vegetation Height (inches): 0 (None)

Dominant Plant Species (Common Names):

Invasive Plant Species (Common Names):

Representative Photo(s):





Field Data Sheet





Field Data Sheet

Notes :

Do you need to report observations of another open field?

Yes



Field Data Sheet

Corresponding Point ID(s): 6

Anthropogenic Disturbance/Management Practices: ATV/Other Vehicle Noise

Primary Open Field Cover Type: Field Cropland (including hay, wheat, oats, etc.)

Estimated Grass Cover (%): 50-90%

Estimated Forb Cover (%): 10-25%

Estimated Woody Vegetation Cover (%): None

Estimated Bare Ground (%): None

Estimated Litter Depth (inches): 1-3"

Average Vegetation Height (inches): 24-30

Dominant Plant Species (Common Names): Grass, dandelion, clover, bedstraw,

Invasive Plant Species (Common Names):

Representative Photo(s):





Field Data Sheet





Field Data Sheet

Notes :

Do you need to report observations of another open field?

Yes



Field Data Sheet

Corresponding Point ID(s): 12

Anthropogenic Disturbance/Management Practices: ATV/Other Vehicle Noise

Primary Open Field Cover Type: Field Cropland (including hay, wheat, oats, etc.)

Estimated Grass Cover (%): 50-90%

Estimated Forb Cover (%): 10-25%

Estimated Woody Vegetation Cover (%): None

Estimated Bare Ground (%): 1-10%

Estimated Litter Depth (inches): 0-1"

Average Vegetation Height (inches): 4-6

Dominant Plant Species (Common Names): Grass, clover, dandelion,

Invasive Plant Species (Common Names):

Representative Photo(s):





Field Data Sheet





Field Data Sheet

Notes :

Do you need to report observations of another open field?

Yes



Field Data Sheet

Corresponding Point ID(s): 15.1

Anthropogenic Disturbance/Management Practices: ATV/Other Vehicle Noise

Primary Open Field Cover Type: Row Cropland (Active)

Estimated Grass Cover (%): 25-50%

Estimated Forb Cover (%): 10-25%

Estimated Woody Vegetation Cover (%): 1-10%

Estimated Bare Ground (%): 25-50%

Estimated Litter Depth (inches): 0-1"

Average Vegetation Height (inches): 4-6

Dominant Plant Species (Common Names): Grass, clover, dandelion, bedstraw, honeysuckle, thistle

Invasive Plant Species (Common Names): Mugwort

Representative Photo(s):





Field Data Sheet





Field Data Sheet

Notes :

Do you need to report observations of another open field?

Yes



Field Data Sheet

Corresponding Point ID(s): 16

Anthropogenic Disturbance/Management Practices: ATV/Other Vehicle Noise

Primary Open Field Cover Type: Row Cropland (Active)

Estimated Grass Cover (%): 1-10%

Estimated Forb Cover (%): None

Estimated Woody Vegetation Cover (%): None

Estimated Bare Ground (%): 90-100%

Estimated Litter Depth (inches): 0-1"

Average Vegetation Height (inches): 0-2

Dominant Plant Species (Common Names): Corn

Invasive Plant Species (Common Names):

Representative Photo(s):





Field Data Sheet





Field Data Sheet

Notes :

Do you need to report observations of another open field?

Yes



Field Data Sheet

Corresponding Point ID(s): 17

Anthropogenic Disturbance/Management Practices: None notable

Primary Open Field Cover Type: Row Cropland (Active)

Estimated Grass Cover (%): 1-10%

Estimated Forb Cover (%): None

Estimated Woody Vegetation Cover (%): None

Estimated Bare Ground (%): 90-100%

Estimated Litter Depth (inches): 0-1"

Average Vegetation Height (inches): 0-2

Dominant Plant Species (Common Names): Corn

Invasive Plant Species (Common Names):

Representative Photo(s):





Field Data Sheet





Field Data Sheet

Notes :

Do you need to report observations of another open field?

Yes



Field Data Sheet

Corresponding Point ID(s): 16.2

Anthropogenic Disturbance/Management Practices: None notable

Primary Open Field Cover Type: Row Cropland (Active)

Estimated Grass Cover (%): 1-10%

Estimated Forb Cover (%): None

Estimated Woody Vegetation Cover (%): None

Estimated Bare Ground (%): 90-100%

Estimated Litter Depth (inches): 0-1"

Average Vegetation Height (inches): 0-2

Dominant Plant Species (Common Names): Corn

Invasive Plant Species (Common Names):

Representative Photo(s):





Field Data Sheet





Field Data Sheet

Notes :

Do you need to report observations of another open field?

Yes



Field Data Sheet

Corresponding Point ID(s): 16.1

Anthropogenic Disturbance/Management Practices: None notable

Primary Open Field Cover Type: Pastureland

Estimated Grass Cover (%): 50-90%

Estimated Forb Cover (%): 10-25%

Estimated Woody Vegetation Cover (%): 1-10%

Estimated Bare Ground (%): None

Estimated Litter Depth (inches): 0-1"

Average Vegetation Height (inches): 6-12

Dominant Plant Species (Common Names): Grass, clover, dandelion, bedstraw,

Invasive Plant Species (Common Names):

Representative Photo(s):





Field Data Sheet





Field Data Sheet

Notes :

Do you need to report observations of another open field?

Yes



Field Data Sheet

Corresponding Point ID(s): 14

Anthropogenic Disturbance/Management Practices: ATV/Other Vehicle Noise

Primary Open Field Cover Type: Row Cropland (Active)

Estimated Grass Cover (%): 1-10%

Estimated Forb Cover (%): None

Estimated Woody Vegetation Cover (%): None

Estimated Bare Ground (%): 90-100%

Estimated Litter Depth (inches): 0-1"

Average Vegetation Height (inches): 0-2

Dominant Plant Species (Common Names): Corn

Invasive Plant Species (Common Names):

Representative Photo(s):





Field Data Sheet





Field Data Sheet

Notes :

Do you need to report observations of another open field?

Yes



Field Data Sheet

Corresponding Point ID(s): 13

Anthropogenic Disturbance/Management Practices: ATV/Other Vehicle Noise

Primary Open Field Cover Type: Row Cropland (Active)

Estimated Grass Cover (%): 1-10%

Estimated Forb Cover (%): None

Estimated Woody Vegetation Cover (%): None

Estimated Bare Ground (%): 90-100%

Estimated Litter Depth (inches): 0-1"

Average Vegetation Height (inches): 0-2

Dominant Plant Species (Common Names): Corn

Invasive Plant Species (Common Names):

Representative Photo(s):





Field Data Sheet





Field Data Sheet

Notes :

Do you need to report observations of another open field?

No



Field Data Sheet

Weather Conditions at End of Survey

Temperature (°F): 73

Wind Speed (mph): 1 – 3 (Light Air; Smoke drifts)

Wind Direction: S

Cloud Cover: Mostly Clear (10-25%)

Visibility: Good (10+ miles; clear)

Precipitation: None (Clear)

Weather Notes:

Were there any notable weather events/changes during the survey? No

Bird Observation Summary

Were any Endangered/Threatened Species observed?

No

Were any Species of Special Concern observed?

Yes

Were probable, possible, or confirmed breeding behaviors observed for any Listed Species (Endangered/Threatened/Special Concern)?

No

Were there additional photos documenting birds observed, habitat conditions, and/or other features of interest?

No

Additional Photo(s):

Were any alternate point count survey locations used due to access or visual constraints?

Yes

Alternate Point Count Survey Locations: 15.1

This appendix has been redacted from this publicly available document because it contains protected/confidential information regarding species listed as endangered, threatened, or special concern in New York.



Field Data Sheet

Breeding Bird Survey

Submitted By: abutler@edrdpc.com

Submitted Time: June 5, 2023 12:14 PM

Survey Information

Project Name: Hoffman Falls

Survey Date: May 31, 2023

Surveyor Name: Anna Butler

Points Surveyed: 19-21, 24, 30-35, 35.1, 56-58

Survey Start Time: 05:33

Survey End Time: 10:27

Weather Conditions at Start of Survey

Temperature (°F): 50

Wind Speed (mph): 1 – 3 (Light Air; Smoke drifts)

Wind Direction: NNE

Cloud Cover: None (Clear)

Visibility: Good (10+ miles; clear)

Precipitation: None (Clear)

Weather Notes:



Field Data Sheet

Open Field Condition Observations

Corresponding Point ID(s): 35.1

Anthropogenic Disturbance/Management Practices: None notable

Primary Open Field Cover Type: Field Cropland (including hay, wheat, oats, etc.)

Estimated Grass Cover (%): 50-90%

Estimated Forb Cover (%): 25-50%

Estimated Woody Vegetation Cover (%): None

Estimated Bare Ground (%): None

Estimated Litter Depth (inches): 0-1"

Average Vegetation Height (inches): 4-6

Dominant Plant Species (Common Names): Grass, buttercup, bedstraw

Invasive Plant Species (Common Names):

Representative Photo(s):





Field Data Sheet





Field Data Sheet

Notes :

Do you need to report observations of another open field?

Yes



Field Data Sheet

Corresponding Point ID(s): 35

Anthropogenic Disturbance/Management Practices: Traffic Noise

Primary Open Field Cover Type: Field Cropland (including hay, wheat, oats, etc.)

Estimated Grass Cover (%): 50-90%

Estimated Forb Cover (%): 25-50%

Estimated Woody Vegetation Cover (%): None

Estimated Bare Ground (%): None

Estimated Litter Depth (inches): 0-1"

Average Vegetation Height (inches): 4-6

Dominant Plant Species (Common Names): Grass, clover

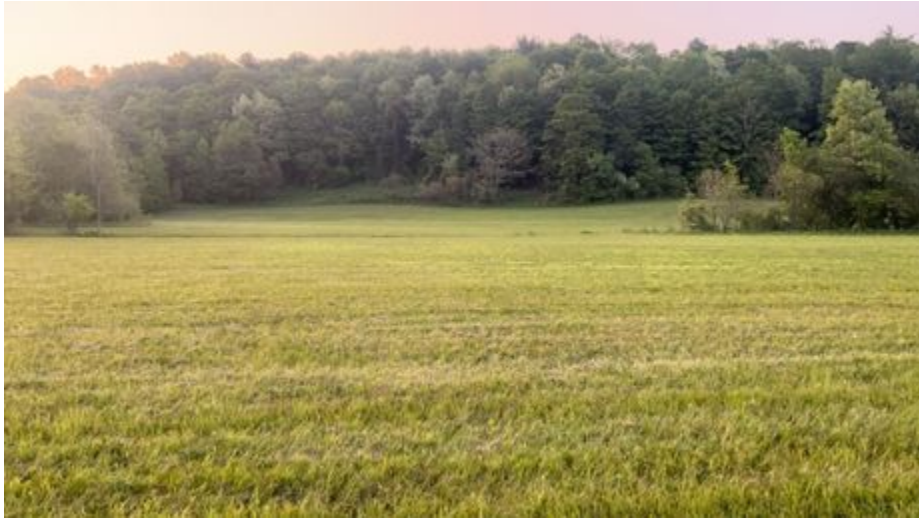
Invasive Plant Species (Common Names):

Representative Photo(s):





Field Data Sheet





Field Data Sheet

Notes :

Do you need to report observations of another open field?

Yes



Field Data Sheet

Corresponding Point ID(s): 34

Anthropogenic Disturbance/Management Practices: Traffic Noise

Primary Open Field Cover Type: Row Cropland (Active)

Estimated Grass Cover (%): 1-10%

Estimated Forb Cover (%): None

Estimated Woody Vegetation Cover (%): None

Estimated Bare Ground (%): None

Estimated Litter Depth (inches): None

Average Vegetation Height (inches): 2-4

Dominant Plant Species (Common Names): Grass

Invasive Plant Species (Common Names):

Representative Photo(s):





Field Data Sheet





Field Data Sheet

Notes :

Do you need to report observations of another open field?

Yes



Field Data Sheet

Corresponding Point ID(s): 33

Anthropogenic Disturbance/Management Practices: None notable

Primary Open Field Cover Type: Field Cropland (including hay, wheat, oats, etc.)

Estimated Grass Cover (%): 25-50%

Estimated Forb Cover (%): 25-50%

Estimated Woody Vegetation Cover (%): None

Estimated Bare Ground (%): None

Estimated Litter Depth (inches): 0-1"

Average Vegetation Height (inches): 12-18

Dominant Plant Species (Common Names): Grass, buttercup, dandelion, bedstraw

Invasive Plant Species (Common Names):

Representative Photo(s):





Field Data Sheet





Field Data Sheet

Notes :

Do you need to report observations of another open field?

Yes



Field Data Sheet

Corresponding Point ID(s): 32

Anthropogenic Disturbance/Management Practices: None notable

Primary Open Field Cover Type: Field Cropland (including hay, wheat, oats, etc.)

Estimated Grass Cover (%): 90-100%

Estimated Forb Cover (%): 1-10%

Estimated Woody Vegetation Cover (%): None

Estimated Bare Ground (%): None

Estimated Litter Depth (inches): 0-1"

Average Vegetation Height (inches): 12-18

Dominant Plant Species (Common Names): Grass, buttercup, bladderwort

Invasive Plant Species (Common Names):

Representative Photo(s):





Field Data Sheet





Field Data Sheet

Notes :

Do you need to report observations of another open field?

Yes



Field Data Sheet

Corresponding Point ID(s): 31

Anthropogenic Disturbance/Management Practices: None notable

Primary Open Field Cover Type: Field Cropland (including hay, wheat, oats, etc.)

Estimated Grass Cover (%): 50-90%

Estimated Forb Cover (%): 25-50%

Estimated Woody Vegetation Cover (%): None

Estimated Bare Ground (%): None

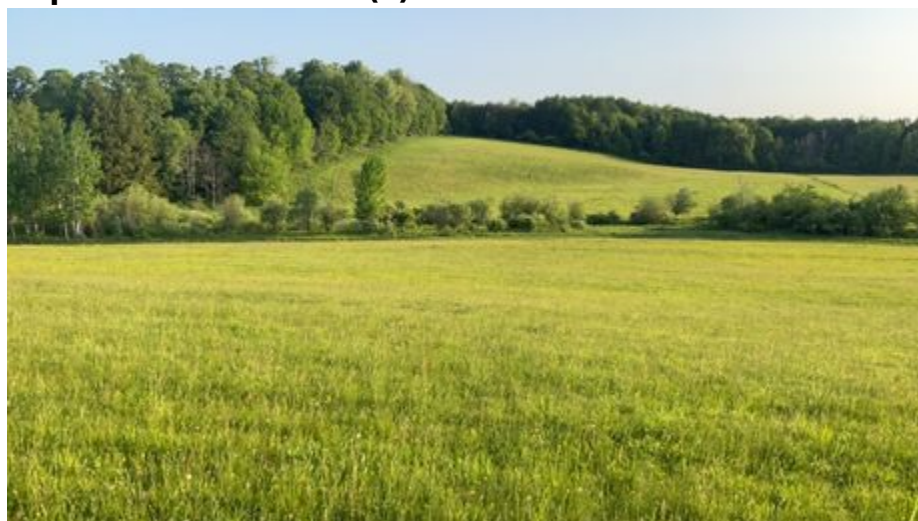
Estimated Litter Depth (inches): 0-1"

Average Vegetation Height (inches): 4-6

Dominant Plant Species (Common Names): Grass, buttercup, strawberry

Invasive Plant Species (Common Names):

Representative Photo(s):





Field Data Sheet





Field Data Sheet

Notes :

Do you need to report observations of another open field?

Yes



Field Data Sheet

Corresponding Point ID(s): 30

Anthropogenic Disturbance/Management Practices: None notable

Primary Open Field Cover Type: Field Cropland (including hay, wheat, oats, etc.)

Estimated Grass Cover (%): 25-50%

Estimated Forb Cover (%): 25-50%

Estimated Woody Vegetation Cover (%): None

Estimated Bare Ground (%): None

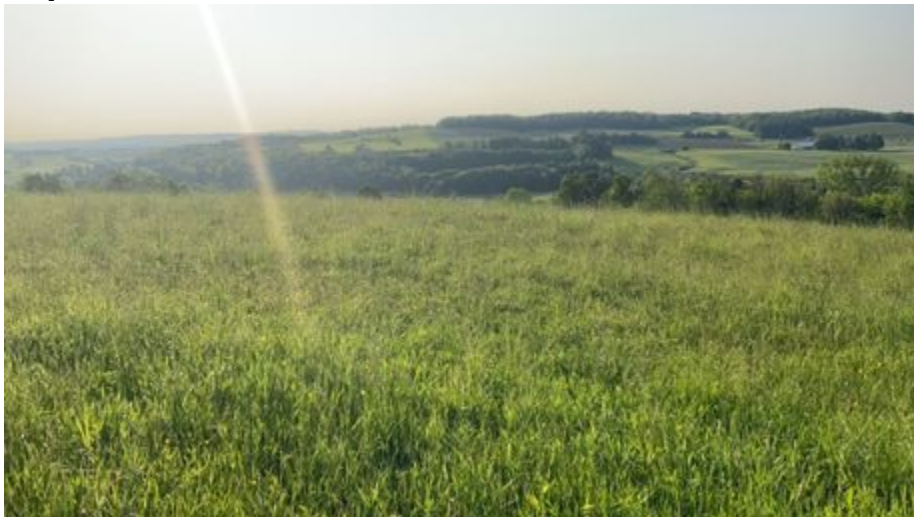
Estimated Litter Depth (inches): 0-1"

Average Vegetation Height (inches): 6-12

Dominant Plant Species (Common Names): Grass, sensitive fern, red clover

Invasive Plant Species (Common Names):

Representative Photo(s):





Field Data Sheet





Field Data Sheet

Notes :

Do you need to report observations of another open field?

Yes



Field Data Sheet

Corresponding Point ID(s): 24

Anthropogenic Disturbance/Management Practices: Traffic Noise

Primary Open Field Cover Type: Successional Old Field

Estimated Grass Cover (%): 10-25%

Estimated Forb Cover (%): 25-50%

Estimated Woody Vegetation Cover (%): 25-50%

Estimated Bare Ground (%): None

Estimated Litter Depth (inches): 1-3"

Average Vegetation Height (inches): 18-24

Dominant Plant Species (Common Names): Goldenrod, blackberry, dogwood

Invasive Plant Species (Common Names): Honeysuckle

Representative Photo(s):





Field Data Sheet





Field Data Sheet

Notes :

Do you need to report observations of another open field?

Yes



Field Data Sheet

Corresponding Point ID(s): 19

Anthropogenic Disturbance/Management Practices: Traffic Noise

Primary Open Field Cover Type: Row Cropland (Active)

Estimated Grass Cover (%): None

Estimated Forb Cover (%): None

Estimated Woody Vegetation Cover (%): None

Estimated Bare Ground (%): 90-100%

Estimated Litter Depth (inches): None

Average Vegetation Height (inches): 0 (None)

Dominant Plant Species (Common Names):

Invasive Plant Species (Common Names):

Representative Photo(s):





Field Data Sheet





Field Data Sheet

Notes :

Do you need to report observations of another open field?

Yes



Field Data Sheet

Corresponding Point ID(s): 20

Anthropogenic Disturbance/Management Practices: Traffic Noise

Primary Open Field Cover Type: Row Cropland (Active)

Estimated Grass Cover (%): None

Estimated Forb Cover (%): None

Estimated Woody Vegetation Cover (%): None

Estimated Bare Ground (%): 90-100%

Estimated Litter Depth (inches): None

Average Vegetation Height (inches): 0 (None)

Dominant Plant Species (Common Names):

Invasive Plant Species (Common Names):

Representative Photo(s):





Field Data Sheet





Field Data Sheet

Notes :

Do you need to report observations of another open field?

Yes



Field Data Sheet

Corresponding Point ID(s): 21

Anthropogenic Disturbance/Management Practices: Traffic Noise

Primary Open Field Cover Type: Row Cropland (Active)

Estimated Grass Cover (%): None

Estimated Forb Cover (%): None

Estimated Woody Vegetation Cover (%): None

Estimated Bare Ground (%): 90-100%

Estimated Litter Depth (inches): None

Average Vegetation Height (inches): 0 (None)

Dominant Plant Species (Common Names):

Invasive Plant Species (Common Names):

Representative Photo(s):





Field Data Sheet





Field Data Sheet

Notes :

Do you need to report observations of another open field?

Yes



Field Data Sheet

Corresponding Point ID(s): 58

Anthropogenic Disturbance/Management Practices: Farm Equipment Noise

Primary Open Field Cover Type: Field Cropland (including hay, wheat, oats, etc.)

Estimated Grass Cover (%): 50-90%

Estimated Forb Cover (%): 10-25%

Estimated Woody Vegetation Cover (%): None

Estimated Bare Ground (%): None

Estimated Litter Depth (inches): 0-1"

Average Vegetation Height (inches): 2-4

Dominant Plant Species (Common Names): Grass, goldenrod

Invasive Plant Species (Common Names):

Representative Photo(s):





Field Data Sheet





Field Data Sheet

Notes :

Do you need to report observations of another open field?

Yes



Field Data Sheet

Corresponding Point ID(s): 56

Anthropogenic Disturbance/Management Practices: Traffic Noise

Primary Open Field Cover Type: Row Cropland (Active)

Estimated Grass Cover (%): None

Estimated Forb Cover (%): 1-10%

Estimated Woody Vegetation Cover (%): None

Estimated Bare Ground (%): 90-100%

Estimated Litter Depth (inches): None

Average Vegetation Height (inches): 2-4

Dominant Plant Species (Common Names): Corn

Invasive Plant Species (Common Names):

Representative Photo(s):





Field Data Sheet





Field Data Sheet

Notes :

Do you need to report observations of another open field?

Yes



Field Data Sheet

Corresponding Point ID(s): 57

Anthropogenic Disturbance/Management Practices: Traffic Noise

Primary Open Field Cover Type: Field Cropland (including hay, wheat, oats, etc.)

Estimated Grass Cover (%): 25-50%

Estimated Forb Cover (%): 25-50%

Estimated Woody Vegetation Cover (%): None

Estimated Bare Ground (%): None

Estimated Litter Depth (inches): 0-1"

Average Vegetation Height (inches): 2-4

Dominant Plant Species (Common Names): Grass, dandelion, clover

Invasive Plant Species (Common Names):

Representative Photo(s):





Field Data Sheet





Field Data Sheet

Notes :

Do you need to report observations of another open field?

No



Field Data Sheet

Weather Conditions at End of Survey

Temperature (°F): 74

Wind Speed (mph): 1 – 3 (Light Air; Smoke drifts)

Wind Direction: SSE

Cloud Cover: None (Clear)

Visibility: Good (10+ miles; clear)

Precipitation: None (Clear)

Weather Notes:

Were there any notable weather events/changes during the survey? No

Bird Observation Summary

Were any Endangered/Threatened Species observed?

No

Were any Species of Special Concern observed?

No

Were probable, possible, or confirmed breeding behaviors observed for any Listed Species (Endangered/Threatened/Special Concern)?

No

Were there additional photos documenting birds observed, habitat conditions, and/or other features of interest?

No

Additional Photo(s):

Were any alternate point count survey locations used due to access or visual constraints?

No

Alternate Point Count Survey Locations:



Field Data Sheet

**Incidental bird species observed outside of timed point count surveys
(Alpha Codes or Common Names):**

Overall Survey Notes:



Field Data Sheet

Breeding Bird Survey

Submitted By: abutler@edrdpc.com

Submitted Time: June 5, 2023 12:14 PM

Survey Information

Project Name: Hoffman Falls

Survey Date: June 1, 2023

Surveyor Name: Anna Butler

Points Surveyed: 27-29, 33.1, 54-55, 60-68

Survey Start Time: 05:40

Survey End Time: 10:29

Weather Conditions at Start of Survey

Temperature (°F): 52

Wind Speed (mph): 1 – 3 (Light Air; Smoke drifts)

Wind Direction: N

Cloud Cover: None (Clear)

Visibility: Good (10+ miles; clear)

Precipitation: None (Clear)

Weather Notes:



Field Data Sheet

Open Field Condition Observations

Corresponding Point ID(s): 29

Anthropogenic Disturbance/Management Practices: None notable

Primary Open Field Cover Type: Row Cropland (Fallow)

Estimated Grass Cover (%): 25-50%

Estimated Forb Cover (%): 10-25%

Estimated Woody Vegetation Cover (%): None

Estimated Bare Ground (%): 25-50%

Estimated Litter Depth (inches): None

Average Vegetation Height (inches): 4-6

Dominant Plant Species (Common Names): Grass, bladderwort, yellow rocket

Invasive Plant Species (Common Names):

Representative Photo(s):





Field Data Sheet





Field Data Sheet

Notes :

Do you need to report observations of another open field?

Yes



Field Data Sheet

Corresponding Point ID(s): 28

Anthropogenic Disturbance/Management Practices: None notable

Primary Open Field Cover Type: Row Cropland (Fallow)

Estimated Grass Cover (%): 25-50%

Estimated Forb Cover (%): 10-25%

Estimated Woody Vegetation Cover (%): None

Estimated Bare Ground (%): 25-50%

Estimated Litter Depth (inches): None

Average Vegetation Height (inches): 4-6

Dominant Plant Species (Common Names): Grass, yellow rocket

Invasive Plant Species (Common Names):

Representative Photo(s):





Field Data Sheet





Field Data Sheet

Notes :

Do you need to report observations of another open field?

Yes



Field Data Sheet

Corresponding Point ID(s): 27

Anthropogenic Disturbance/Management Practices: None notable

Primary Open Field Cover Type: Row Cropland (Fallow)

Estimated Grass Cover (%): 25-50%

Estimated Forb Cover (%): 1-10%

Estimated Woody Vegetation Cover (%): None

Estimated Bare Ground (%): 25-50%

Estimated Litter Depth (inches): None

Average Vegetation Height (inches): 4-6

Dominant Plant Species (Common Names): Grass, yellow rocket

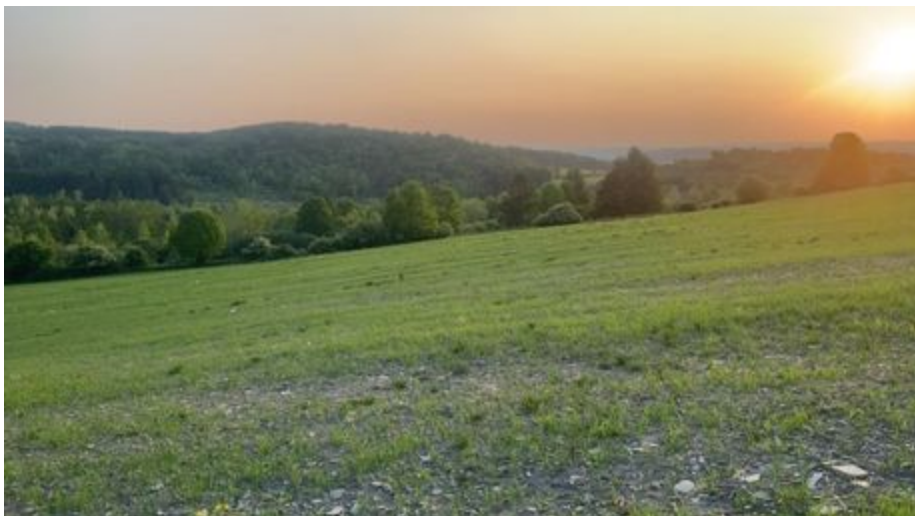
Invasive Plant Species (Common Names):

Representative Photo(s):





Field Data Sheet





Field Data Sheet

Notes :

Do you need to report observations of another open field?

Yes



Field Data Sheet

Corresponding Point ID(s): 33.1

Anthropogenic Disturbance/Management Practices: Traffic Noise

Primary Open Field Cover Type: Field Cropland (including hay, wheat, oats, etc.)

Estimated Grass Cover (%): 50-90%

Estimated Forb Cover (%): 1-10%

Estimated Woody Vegetation Cover (%): None

Estimated Bare Ground (%): None

Estimated Litter Depth (inches): 0-1"

Average Vegetation Height (inches): 12-18

Dominant Plant Species (Common Names): Grass, buttercup

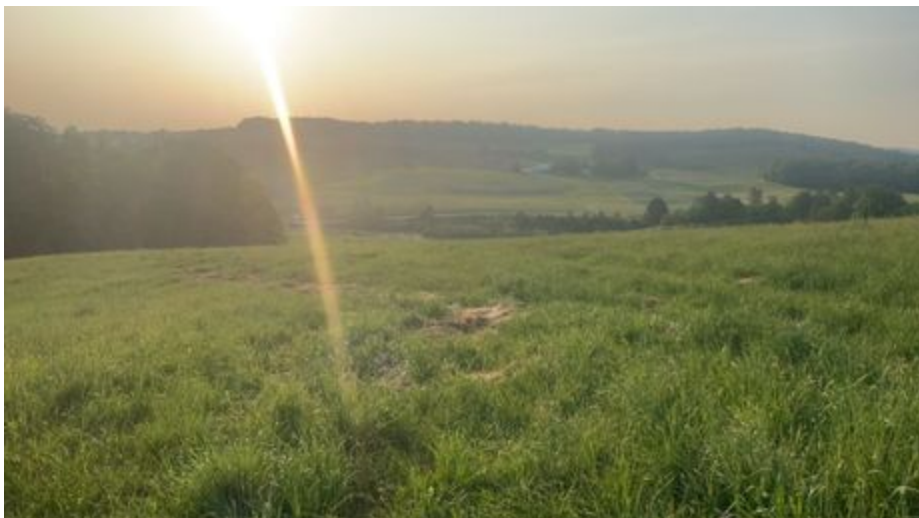
Invasive Plant Species (Common Names):

Representative Photo(s):





Field Data Sheet





Field Data Sheet

Notes :

Do you need to report observations of another open field?

Yes



Field Data Sheet

Corresponding Point ID(s): 54

Anthropogenic Disturbance/Management Practices: Traffic Noise

Primary Open Field Cover Type: Row Cropland (Active)

Estimated Grass Cover (%): 1-10%

Estimated Forb Cover (%): None

Estimated Woody Vegetation Cover (%): None

Estimated Bare Ground (%): 90-100%

Estimated Litter Depth (inches): None

Average Vegetation Height (inches): 4-6

Dominant Plant Species (Common Names): Grass

Invasive Plant Species (Common Names):

Representative Photo(s):





Field Data Sheet





Field Data Sheet

Notes :

Do you need to report observations of another open field?

Yes



Field Data Sheet

Corresponding Point ID(s): 60 (alt)

Anthropogenic Disturbance/Management Practices: Traffic Noise

Primary Open Field Cover Type: Pastureland

Estimated Grass Cover (%): 50-90%

Estimated Forb Cover (%): 25-50%

Estimated Woody Vegetation Cover (%): None

Estimated Bare Ground (%): None

Estimated Litter Depth (inches): 0-1"

Average Vegetation Height (inches): 12-18

Dominant Plant Species (Common Names): Grass, buttercup

Invasive Plant Species (Common Names):

Representative Photo(s):





Field Data Sheet





Field Data Sheet

Notes :

Do you need to report observations of another open field?

Yes



Field Data Sheet

Corresponding Point ID(s): 55

Anthropogenic Disturbance/Management Practices: Traffic Noise

Primary Open Field Cover Type: Row Cropland (Active)

Estimated Grass Cover (%): None

Estimated Forb Cover (%): 1-10%

Estimated Woody Vegetation Cover (%): None

Estimated Bare Ground (%): None

Estimated Litter Depth (inches): 1-3"

Average Vegetation Height (inches): 0-2

Dominant Plant Species (Common Names): Corn, dandelion

Invasive Plant Species (Common Names):

Representative Photo(s):





Field Data Sheet





Field Data Sheet

Notes :

Do you need to report observations of another open field?

Yes



Field Data Sheet

Corresponding Point ID(s): 62

Anthropogenic Disturbance/Management Practices: Traffic Noise

Primary Open Field Cover Type: Pastureland

Estimated Grass Cover (%): 90-100%

Estimated Forb Cover (%): None

Estimated Woody Vegetation Cover (%): None

Estimated Bare Ground (%): None

Estimated Litter Depth (inches): 0-1"

Average Vegetation Height (inches): 4-6

Dominant Plant Species (Common Names): Grass

Invasive Plant Species (Common Names):

Representative Photo(s):





Field Data Sheet





Field Data Sheet

Notes :

Do you need to report observations of another open field?

Yes



Field Data Sheet

Corresponding Point ID(s): 63

Anthropogenic Disturbance/Management Practices: Traffic Noise

Primary Open Field Cover Type: Row Cropland (Active)

Estimated Grass Cover (%): 10-25%

Estimated Forb Cover (%): 1-10%

Estimated Woody Vegetation Cover (%): None

Estimated Bare Ground (%): 25-50%

Estimated Litter Depth (inches): None

Average Vegetation Height (inches): 4-6

Dominant Plant Species (Common Names): Grass, corn

Invasive Plant Species (Common Names):

Representative Photo(s):





Field Data Sheet





Field Data Sheet

Notes :

Do you need to report observations of another open field?

Yes



Field Data Sheet

Corresponding Point ID(s): 65

Anthropogenic Disturbance/Management Practices: Traffic Noise

Primary Open Field Cover Type: Row Cropland (Active)

Estimated Grass Cover (%): 1-10%

Estimated Forb Cover (%): 1-10%

Estimated Woody Vegetation Cover (%): None

Estimated Bare Ground (%): 50-90%

Estimated Litter Depth (inches): None

Average Vegetation Height (inches): 4-6

Dominant Plant Species (Common Names): Grass, corn

Invasive Plant Species (Common Names):

Representative Photo(s):





Field Data Sheet





Field Data Sheet

Notes :

Do you need to report observations of another open field?

Yes



Field Data Sheet

Corresponding Point ID(s): 66

Anthropogenic Disturbance/Management Practices: Traffic Noise

Primary Open Field Cover Type: Row Cropland (Active)

Estimated Grass Cover (%): 50-90%

Estimated Forb Cover (%): 10-25%

Estimated Woody Vegetation Cover (%): None

Estimated Bare Ground (%): 1-10%

Estimated Litter Depth (inches): 0-1"

Average Vegetation Height (inches): 6-12

Dominant Plant Species (Common Names): Grass, soy, buttercup

Invasive Plant Species (Common Names):

Representative Photo(s):





Field Data Sheet





Field Data Sheet

Notes :

Do you need to report observations of another open field?

Yes



Field Data Sheet

Corresponding Point ID(s): 67

Anthropogenic Disturbance/Management Practices: Traffic Noise

Primary Open Field Cover Type: Row Cropland (Active)

Estimated Grass Cover (%): None

Estimated Forb Cover (%): 10-25%

Estimated Woody Vegetation Cover (%): None

Estimated Bare Ground (%): None

Estimated Litter Depth (inches): None

Average Vegetation Height (inches): 2-4

Dominant Plant Species (Common Names): Soy, common milkweed

Invasive Plant Species (Common Names):

Representative Photo(s):





Field Data Sheet





Field Data Sheet

Notes :

Do you need to report observations of another open field?

Yes



Field Data Sheet

Corresponding Point ID(s): 68

Anthropogenic Disturbance/Management Practices: Traffic Noise

Primary Open Field Cover Type: Row Cropland (Active)

Estimated Grass Cover (%): None

Estimated Forb Cover (%): 10-25%

Estimated Woody Vegetation Cover (%): None

Estimated Bare Ground (%): 50-90%

Estimated Litter Depth (inches): None

Average Vegetation Height (inches): 2-4

Dominant Plant Species (Common Names): Soy, bedstraw

Invasive Plant Species (Common Names):

Representative Photo(s):





Field Data Sheet





Field Data Sheet

Notes :

Do you need to report observations of another open field?

Yes



Field Data Sheet

Corresponding Point ID(s): 64

Anthropogenic Disturbance/Management Practices: Traffic Noise

Primary Open Field Cover Type: Row Cropland (Active)

Estimated Grass Cover (%): 1-10%

Estimated Forb Cover (%): 1-10%

Estimated Woody Vegetation Cover (%): None

Estimated Bare Ground (%): 90-100%

Estimated Litter Depth (inches): None

Average Vegetation Height (inches): 2-4

Dominant Plant Species (Common Names): Dandelion, grass

Invasive Plant Species (Common Names):

Representative Photo(s):





Field Data Sheet





Field Data Sheet

Notes :

Do you need to report observations of another open field?

Yes



Field Data Sheet

Corresponding Point ID(s): 61

Anthropogenic Disturbance/Management Practices: Traffic Noise

Primary Open Field Cover Type: Field Cropland (including hay, wheat, oats, etc.)

Estimated Grass Cover (%): 50-90%

Estimated Forb Cover (%): 10-25%

Estimated Woody Vegetation Cover (%): None

Estimated Bare Ground (%): None

Estimated Litter Depth (inches): 0-1"

Average Vegetation Height (inches): 6-12

Dominant Plant Species (Common Names): Grass, dandelion, red clover

Invasive Plant Species (Common Names):

Representative Photo(s):





Field Data Sheet





Field Data Sheet

Notes :

Do you need to report observations of another open field?



Field Data Sheet

Weather Conditions at End of Survey

Temperature (°F): 77

Wind Speed (mph): 1 – 3 (Light Air; Smoke drifts)

Wind Direction: N

Cloud Cover: None (Clear)

Visibility: Good (10+ miles; clear)

Precipitation: None (Clear)

Weather Notes:

Were there any notable weather events/changes during the survey? No

Bird Observation Summary

Were any Endangered/Threatened Species observed?

No

Were any Species of Special Concern observed?

No

Were probable, possible, or confirmed breeding behaviors observed for any Listed Species (Endangered/Threatened/Special Concern)?

No

Were there additional photos documenting birds observed, habitat conditions, and/or other features of interest?

No

Additional Photo(s):

Were any alternate point count survey locations used due to access or visual constraints?

Yes

Alternate Point Count Survey Locations: Roadside 60



Field Data Sheet

**Incidental bird species observed outside of timed point count surveys
(Alpha Codes or Common Names):**

Overall Survey Notes:



Field Data Sheet

Breeding Bird Survey

Submitted By: abutler@edrdpc.com

Submitted Time: June 5, 2023 12:15 PM

Survey Information

Project Name: Hoffman Falls

Survey Date: June 2, 2023

Surveyor Name: Anna Butler

Points Surveyed: 18, 51-53, 59, 69-80, 76.1

Survey Start Time: 05:08

Survey End Time: 10:28

Weather Conditions at Start of Survey

Temperature (°F): 53

Wind Speed (mph): 1 – 3 (Light Air; Smoke drifts)

Wind Direction: N

Cloud Cover: None (Clear)

Visibility: Good (10+ miles; clear)

Precipitation: None (Clear)

Weather Notes:



Field Data Sheet

Open Field Condition Observations

Corresponding Point ID(s): 18

Anthropogenic Disturbance/Management Practices: None notable

Primary Open Field Cover Type: Field Cropland (including hay, wheat, oats, etc.)

Estimated Grass Cover (%): 50-90%

Estimated Forb Cover (%): 25-50%

Estimated Woody Vegetation Cover (%): None

Estimated Bare Ground (%): None

Estimated Litter Depth (inches): 0-1"

Average Vegetation Height (inches): 18-24

Dominant Plant Species (Common Names): Grass, dandelion

Invasive Plant Species (Common Names):

Representative Photo(s):





Field Data Sheet





Field Data Sheet

Notes :

Do you need to report observations of another open field?

Yes



Field Data Sheet

Corresponding Point ID(s): 52

Anthropogenic Disturbance/Management Practices: Traffic Noise

Primary Open Field Cover Type: Row Cropland (Active)

Estimated Grass Cover (%): 1-10%

Estimated Forb Cover (%): 1-10%

Estimated Woody Vegetation Cover (%): None

Estimated Bare Ground (%): 90-100%

Estimated Litter Depth (inches): None

Average Vegetation Height (inches): 0-2

Dominant Plant Species (Common Names): Soy, grass

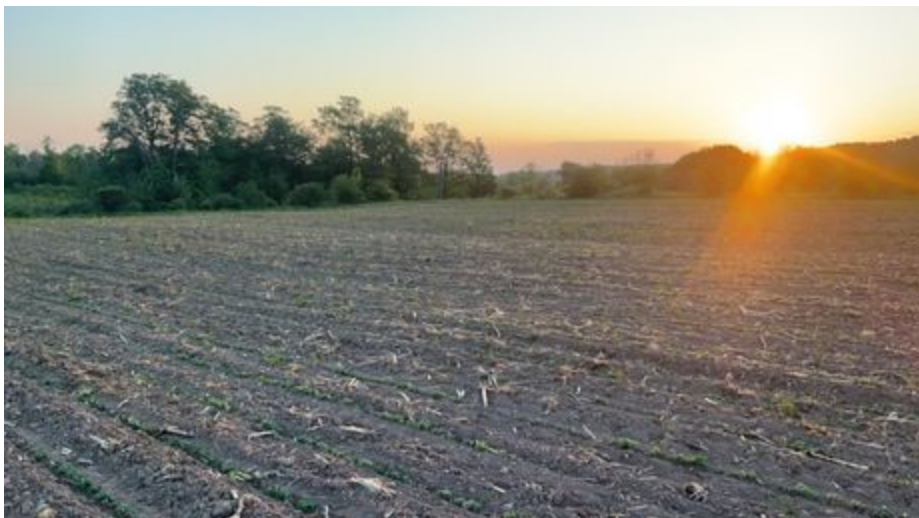
Invasive Plant Species (Common Names):

Representative Photo(s):





Field Data Sheet





Field Data Sheet

Notes :

Do you need to report observations of another open field?

Yes



Field Data Sheet

Corresponding Point ID(s): 53

Anthropogenic Disturbance/Management Practices: Traffic Noise

Primary Open Field Cover Type: Row Cropland (Active)

Estimated Grass Cover (%): None

Estimated Forb Cover (%): 1-10%

Estimated Woody Vegetation Cover (%): None

Estimated Bare Ground (%): 90-100%

Estimated Litter Depth (inches): None

Average Vegetation Height (inches): 2-4

Dominant Plant Species (Common Names): Soy

Invasive Plant Species (Common Names):

Representative Photo(s):





Field Data Sheet





Field Data Sheet

Notes :

Do you need to report observations of another open field?

Yes



Field Data Sheet

Corresponding Point ID(s): 51

Anthropogenic Disturbance/Management Practices: Traffic Noise

Primary Open Field Cover Type: Row Cropland (Active)

Estimated Grass Cover (%): 1-10%

Estimated Forb Cover (%): 1-10%

Estimated Woody Vegetation Cover (%): None

Estimated Bare Ground (%): 90-100%

Estimated Litter Depth (inches): None

Average Vegetation Height (inches): 4-6

Dominant Plant Species (Common Names): Grass, buttercup, common milkweed, goldenrod

Invasive Plant Species (Common Names):

Representative Photo(s):





Field Data Sheet





Field Data Sheet

Notes :

Do you need to report observations of another open field?

Yes



Field Data Sheet

Corresponding Point ID(s): 59

Anthropogenic Disturbance/Management Practices: Traffic Noise

Primary Open Field Cover Type: Pastureland

Estimated Grass Cover (%): 50-90%

Estimated Forb Cover (%): 25-50%

Estimated Woody Vegetation Cover (%): None

Estimated Bare Ground (%): None

Estimated Litter Depth (inches): 0-1"

Average Vegetation Height (inches): 4-6

Dominant Plant Species (Common Names): Grass, buttercup

Invasive Plant Species (Common Names):

Representative Photo(s):





Field Data Sheet





Field Data Sheet

Notes :

Cows seem to be let out between 4:30 and 6:30AM, so conceivably could do this survey after 7

Do you need to report observations of another open field?

Yes



Field Data Sheet

Corresponding Point ID(s): 69

Anthropogenic Disturbance/Management Practices: Traffic Noise

Primary Open Field Cover Type: Field Cropland (including hay, wheat, oats, etc.)

Estimated Grass Cover (%): 50-90%

Estimated Forb Cover (%): 1-10%

Estimated Woody Vegetation Cover (%): None

Estimated Bare Ground (%): None

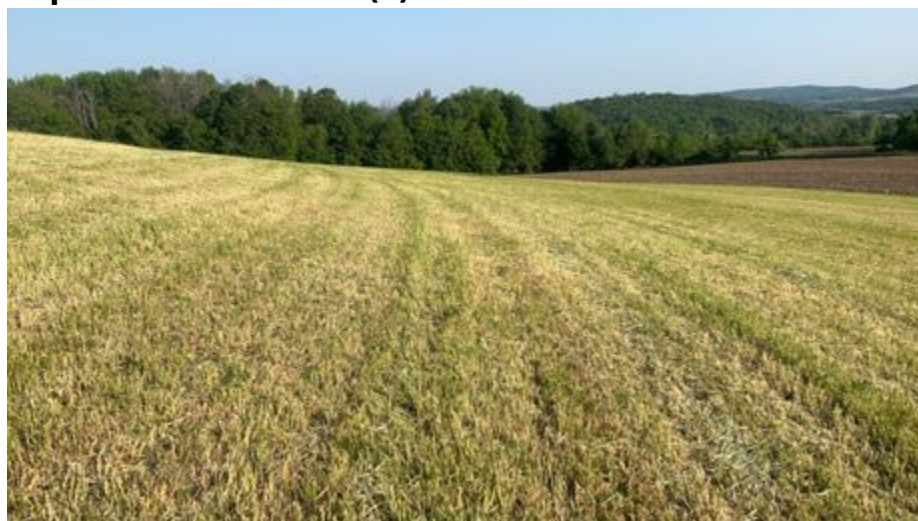
Estimated Litter Depth (inches): 0-1"

Average Vegetation Height (inches): 4-6

Dominant Plant Species (Common Names): Grass, clover

Invasive Plant Species (Common Names):

Representative Photo(s):





Field Data Sheet





Field Data Sheet

Notes :

Do you need to report observations of another open field?

Yes



Field Data Sheet

Corresponding Point ID(s): 70

Anthropogenic Disturbance/Management Practices: Farm Equipment In Use

Primary Open Field Cover Type: Row Cropland (Active)

Estimated Grass Cover (%): None

Estimated Forb Cover (%): 1-10%

Estimated Woody Vegetation Cover (%): None

Estimated Bare Ground (%): 50-90%

Estimated Litter Depth (inches): None

Average Vegetation Height (inches): 2-4

Dominant Plant Species (Common Names): Corn

Invasive Plant Species (Common Names):

Representative Photo(s):





Field Data Sheet





Field Data Sheet

Notes :

Farmer haying in adjacent field

Do you need to report observations of another open field?

Yes



Field Data Sheet

Corresponding Point ID(s): 71

Anthropogenic Disturbance/Management Practices: Farm Equipment In Use

Primary Open Field Cover Type: Field Cropland (including hay, wheat, oats, etc.)

Estimated Grass Cover (%): 50-90%

Estimated Forb Cover (%): 10-25%

Estimated Woody Vegetation Cover (%): None

Estimated Bare Ground (%): None

Estimated Litter Depth (inches): 0-1"

Average Vegetation Height (inches): 2-4

Dominant Plant Species (Common Names): Grass, dandelion, clover

Invasive Plant Species (Common Names):

Representative Photo(s):





Field Data Sheet





Field Data Sheet

Notes :

Do you need to report observations of another open field?

Yes



Field Data Sheet

Corresponding Point ID(s): 72

Anthropogenic Disturbance/Management Practices: Farm Equipment In Use

Primary Open Field Cover Type: Row Cropland (Active)

Estimated Grass Cover (%): 10-25%

Estimated Forb Cover (%): None

Estimated Woody Vegetation Cover (%): None

Estimated Bare Ground (%): 50-90%

Estimated Litter Depth (inches): None

Average Vegetation Height (inches): 4-6

Dominant Plant Species (Common Names): Grass

Invasive Plant Species (Common Names):

Representative Photo(s):





Field Data Sheet





Field Data Sheet

Notes :

Do you need to report observations of another open field?

Yes



Field Data Sheet

Corresponding Point ID(s): 73

Anthropogenic Disturbance/Management Practices: Farm Equipment In Use

Primary Open Field Cover Type: Row Cropland (Active)

Estimated Grass Cover (%): 10-25%

Estimated Forb Cover (%): None

Estimated Woody Vegetation Cover (%): None

Estimated Bare Ground (%): 50-90%

Estimated Litter Depth (inches): None

Average Vegetation Height (inches): 4-6

Dominant Plant Species (Common Names): Grass

Invasive Plant Species (Common Names):

Representative Photo(s):





Field Data Sheet





Field Data Sheet

Notes :

Do you need to report observations of another open field?

Yes



Field Data Sheet

Corresponding Point ID(s): 75

Anthropogenic Disturbance/Management Practices: Farm Equipment In Use

Primary Open Field Cover Type: Field Cropland (including hay, wheat, oats, etc.)

Estimated Grass Cover (%): None

Estimated Forb Cover (%): 50-90%

Estimated Woody Vegetation Cover (%): None

Estimated Bare Ground (%): 10-25%

Estimated Litter Depth (inches): 0-1"

Average Vegetation Height (inches): 2-4

Dominant Plant Species (Common Names): Alfalfa

Invasive Plant Species (Common Names):

Representative Photo(s):





Field Data Sheet





Field Data Sheet

Notes :

Do you need to report observations of another open field?

Yes



Field Data Sheet

Corresponding Point ID(s): 74

Anthropogenic Disturbance/Management Practices: Farm Equipment In Use

Primary Open Field Cover Type: Field Cropland (including hay, wheat, oats, etc.)

Estimated Grass Cover (%): None

Estimated Forb Cover (%): 50-90%

Estimated Woody Vegetation Cover (%): None

Estimated Bare Ground (%): 10-25%

Estimated Litter Depth (inches): 0-1"

Average Vegetation Height (inches): 2-4

Dominant Plant Species (Common Names): Alfalfa

Invasive Plant Species (Common Names):

Representative Photo(s):





Field Data Sheet





Field Data Sheet

Notes :

Do you need to report observations of another open field?

Yes



Field Data Sheet

Corresponding Point ID(s): 76

Anthropogenic Disturbance/Management Practices: Traffic Noise

Primary Open Field Cover Type: Field Cropland (including hay, wheat, oats, etc.)

Estimated Grass Cover (%): 25-50%

Estimated Forb Cover (%): 25-50%

Estimated Woody Vegetation Cover (%): None

Estimated Bare Ground (%): 1-10%

Estimated Litter Depth (inches): 0-1"

Average Vegetation Height (inches): 2-4

Dominant Plant Species (Common Names): Grass, clover, dandelion

Invasive Plant Species (Common Names):

Representative Photo(s):





Field Data Sheet





Field Data Sheet

Notes :

Do you need to report observations of another open field?

Yes



Field Data Sheet

Corresponding Point ID(s): 76.1

Anthropogenic Disturbance/Management Practices: Traffic Noise

Primary Open Field Cover Type: Successional Old Field

Estimated Grass Cover (%): 1-10%

Estimated Forb Cover (%): 50-90%

Estimated Woody Vegetation Cover (%): 1-10%

Estimated Bare Ground (%): None

Estimated Litter Depth (inches): 1-3"

Average Vegetation Height (inches): 18-24

Dominant Plant Species (Common Names): Goldenrod, dogbane, buttercup

Invasive Plant Species (Common Names): Honeysuckle

Representative Photo(s):





Field Data Sheet





Field Data Sheet

Notes :

Do you need to report observations of another open field?

Yes



Field Data Sheet

Corresponding Point ID(s): 77

Anthropogenic Disturbance/Management Practices: Farm Equipment In Use

Primary Open Field Cover Type: Field Cropland (including hay, wheat, oats, etc.)

Estimated Grass Cover (%): 25-50%

Estimated Forb Cover (%): 25-50%

Estimated Woody Vegetation Cover (%): None

Estimated Bare Ground (%): 1-10%

Estimated Litter Depth (inches): 0-1"

Average Vegetation Height (inches): 2-4

Dominant Plant Species (Common Names): Grass, alfalfa

Invasive Plant Species (Common Names):

Representative Photo(s):





Field Data Sheet





Field Data Sheet

Notes :

Tractor passed by on dirt track during survey

Do you need to report observations of another open field?

Yes



Field Data Sheet

Corresponding Point ID(s): 79

Anthropogenic Disturbance/Management Practices: Farm Equipment In Use

Primary Open Field Cover Type: Row Cropland (Active)

Estimated Grass Cover (%): 10-25%

Estimated Forb Cover (%): 1-10%

Estimated Woody Vegetation Cover (%): None

Estimated Bare Ground (%): None

Estimated Litter Depth (inches): None

Average Vegetation Height (inches): 4-6

Dominant Plant Species (Common Names): Grass, corn

Invasive Plant Species (Common Names):

Representative Photo(s):





Field Data Sheet





Field Data Sheet

Notes :

Do you need to report observations of another open field?

Yes



Field Data Sheet

Corresponding Point ID(s): 78

Anthropogenic Disturbance/Management Practices: Farm Equipment In Use

Primary Open Field Cover Type: Field Cropland (including hay, wheat, oats, etc.)

Estimated Grass Cover (%): 25-50%

Estimated Forb Cover (%): 25-50%

Estimated Woody Vegetation Cover (%): None

Estimated Bare Ground (%): 1-10%

Estimated Litter Depth (inches): 0-1"

Average Vegetation Height (inches): 2-4

Dominant Plant Species (Common Names): Alfalfa, grass, red clover, dandelion

Invasive Plant Species (Common Names):

Representative Photo(s):





Field Data Sheet





Field Data Sheet

Notes :

Do you need to report observations of another open field?

Yes



Field Data Sheet

Corresponding Point ID(s): 80

Anthropogenic Disturbance/Management Practices: Farm Equipment In Use

Primary Open Field Cover Type: Field Cropland (including hay, wheat, oats, etc.)

Estimated Grass Cover (%): 50-90%

Estimated Forb Cover (%): 10-25%

Estimated Woody Vegetation Cover (%): None

Estimated Bare Ground (%): 1-10%

Estimated Litter Depth (inches): 0-1"

Average Vegetation Height (inches): 4-6

Dominant Plant Species (Common Names): Grass, clover

Invasive Plant Species (Common Names):

Representative Photo(s):





Field Data Sheet





Field Data Sheet

Notes :

Do you need to report observations of another open field?

No



Field Data Sheet

Weather Conditions at End of Survey

Temperature (°F): 82

Wind Speed (mph): 1 – 3 (Light Air; Smoke drifts)

Wind Direction: NNW

Cloud Cover: None (Clear)

Visibility: Good (10+ miles; clear)

Precipitation: None (Clear)

Weather Notes:

Were there any notable weather events/changes during the survey? No

Bird Observation Summary

Were any Endangered/Threatened Species observed?

No

Were any Species of Special Concern observed?

No

Were probable, possible, or confirmed breeding behaviors observed for any Listed Species (Endangered/Threatened/Special Concern)?

No

Were there additional photos documenting birds observed, habitat conditions, and/or other features of interest?

No

Additional Photo(s):

Were any alternate point count survey locations used due to access or visual constraints?

No

Alternate Point Count Survey Locations:



Field Data Sheet

**Incidental bird species observed outside of timed point count surveys
(Alpha Codes or Common Names):**

KILL

Overall Survey Notes:

Lots of haying going on during surveys and the cows were out directly adjacent to point 59



Field Data Sheet

Breeding Bird Survey

Submitted By: abutler@edrdpc.com

Submitted Time: June 9, 2023 11:41 AM

Survey Information

Project Name: Hoffman Falls

Survey Date: June 6, 2023

Surveyor Name: Anna Butler

Points Surveyed: 18-20, 24, 34-35, 35.1, 42-48

Survey Start Time: 05:53

Survey End Time: 10:29

Weather Conditions at Start of Survey

Temperature (°F): 48

Wind Speed (mph): 1 – 3 (Light Air; Smoke drifts)

Wind Direction: NNW

Cloud Cover: Overcast (90-100%)

Visibility: Good (10+ miles; clear)

Precipitation: None (Clear)

Weather Notes:



Field Data Sheet

Open Field Condition Observations

Corresponding Point ID(s): 24

Anthropogenic Disturbance/Management Practices: None notable

Primary Open Field Cover Type: Successional Old Field

Estimated Grass Cover (%): 1-10%

Estimated Forb Cover (%): 25-50%

Estimated Woody Vegetation Cover (%): 10-25%

Estimated Bare Ground (%): None

Estimated Litter Depth (inches): 1-3"

Average Vegetation Height (inches): 18-24

Dominant Plant Species (Common Names): Goldenrod, dogwood

Invasive Plant Species (Common Names): Honeysuckle

Representative Photo(s):





Field Data Sheet





Field Data Sheet

Notes :

Do you need to report observations of another open field?

Yes



Field Data Sheet

Corresponding Point ID(s): 47

Anthropogenic Disturbance/Management Practices: Traffic Noise

Primary Open Field Cover Type: Field Cropland (including hay, wheat, oats, etc.)

Estimated Grass Cover (%): 50-90%

Estimated Forb Cover (%): 10-25%

Estimated Woody Vegetation Cover (%): None

Estimated Bare Ground (%): None

Estimated Litter Depth (inches): 0-1"

Average Vegetation Height (inches): 12-18

Dominant Plant Species (Common Names): Grass, cow vetch, bedstraw, red clover

Invasive Plant Species (Common Names):

Representative Photo(s):





Field Data Sheet





Field Data Sheet

Notes :

Do you need to report observations of another open field?

Yes



Field Data Sheet

Corresponding Point ID(s): 48

Anthropogenic Disturbance/Management Practices: Traffic Noise

Primary Open Field Cover Type: Row Cropland (Active)

Estimated Grass Cover (%): 1-10%

Estimated Forb Cover (%): 1-10%

Estimated Woody Vegetation Cover (%): None

Estimated Bare Ground (%): 90-100%

Estimated Litter Depth (inches): None

Average Vegetation Height (inches): 2-4

Dominant Plant Species (Common Names): Grass, corn

Invasive Plant Species (Common Names):

Representative Photo(s):





Field Data Sheet





Field Data Sheet

Notes :

Do you need to report observations of another open field?

Yes



Field Data Sheet

Corresponding Point ID(s): 45

Anthropogenic Disturbance/Management Practices: Traffic Noise

Primary Open Field Cover Type: Field Cropland (including hay, wheat, oats, etc.)

Estimated Grass Cover (%): 10-25%

Estimated Forb Cover (%): 50-90%

Estimated Woody Vegetation Cover (%): None

Estimated Bare Ground (%): 10-25%

Estimated Litter Depth (inches): None

Average Vegetation Height (inches): 6-12

Dominant Plant Species (Common Names): Red clover, dandelion

Invasive Plant Species (Common Names):

Representative Photo(s):

