

Figure 13-1. Groundwater Well Offsets - Revision 1

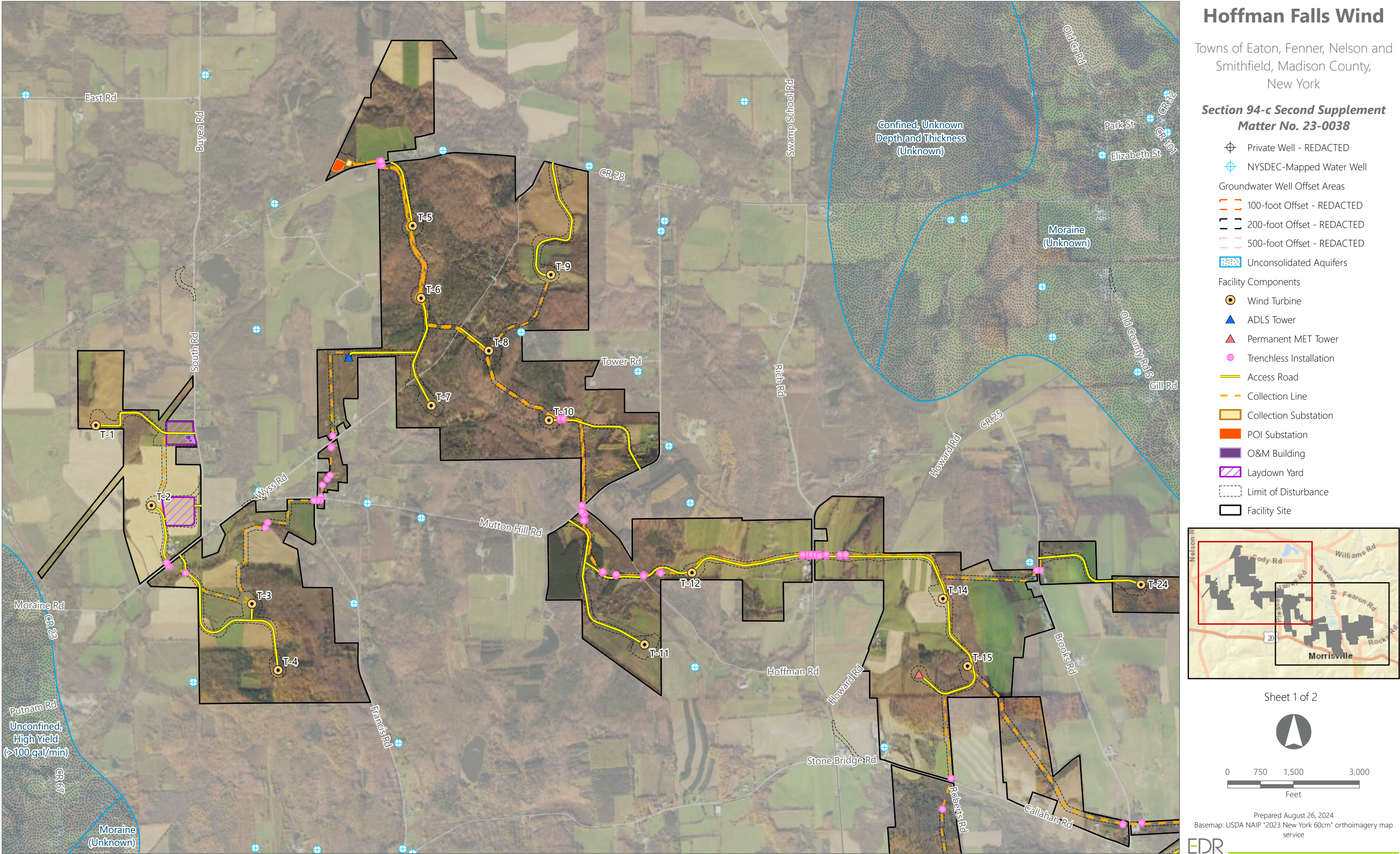
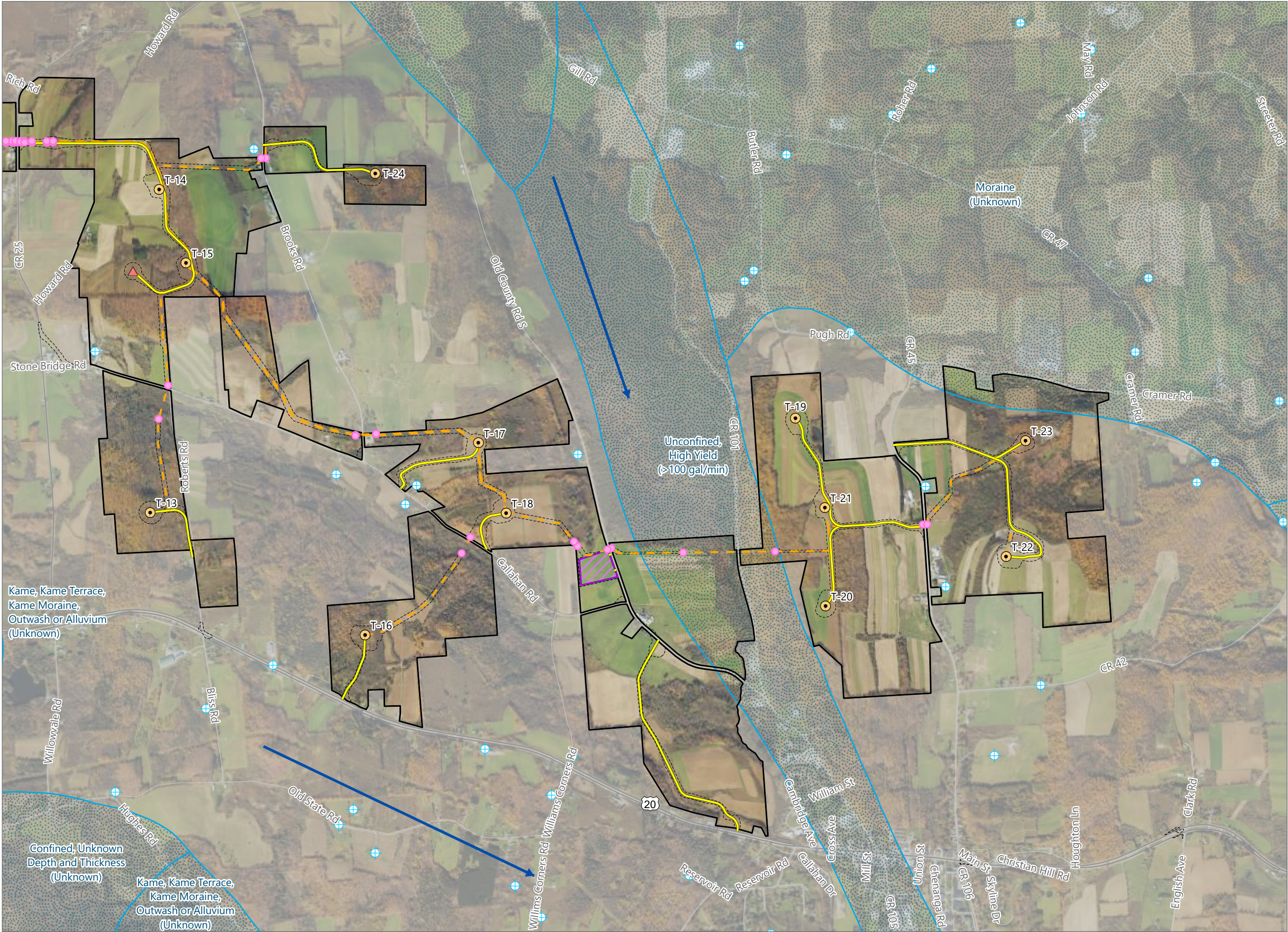


Figure 13-1. Groundwater Well Offsets - Revision 1

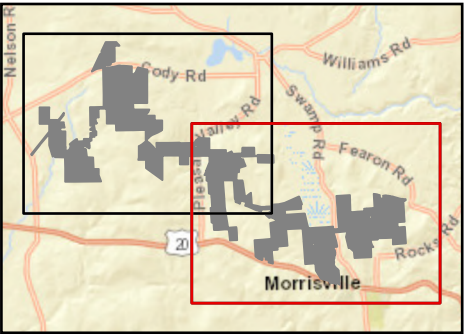


Hoffman Falls Wind

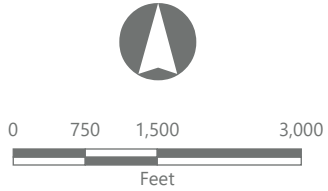
Towns of Eaton, Fenner, Nelson and Smithfield, Madison County, New York

Section 94-c Second Supplement
Matter No. 23-0038

- Private Well - REDACTED
- NYSDEC-Mapped Water Well
- Direction of Groundwater Flow
- Groundwater Well Offset Areas
 - 100-foot Offset - REDACTED
 - 200-foot Offset - REDACTED
 - 500-foot Offset - REDACTED
- Unconsolidated Aquifers
- Facility Components
 - Wind Turbine
 - Permanent MET Tower
 - Trenchless Installation
 - Access Road
 - Collection Line
 - Laydown Yard
 - Limit of Disturbance
 - Facility Site



Sheet 2 of 2



Prepared August 26, 2024
Basemap: USDA NAIP "2023 New York 60cm" orthomagey map service