

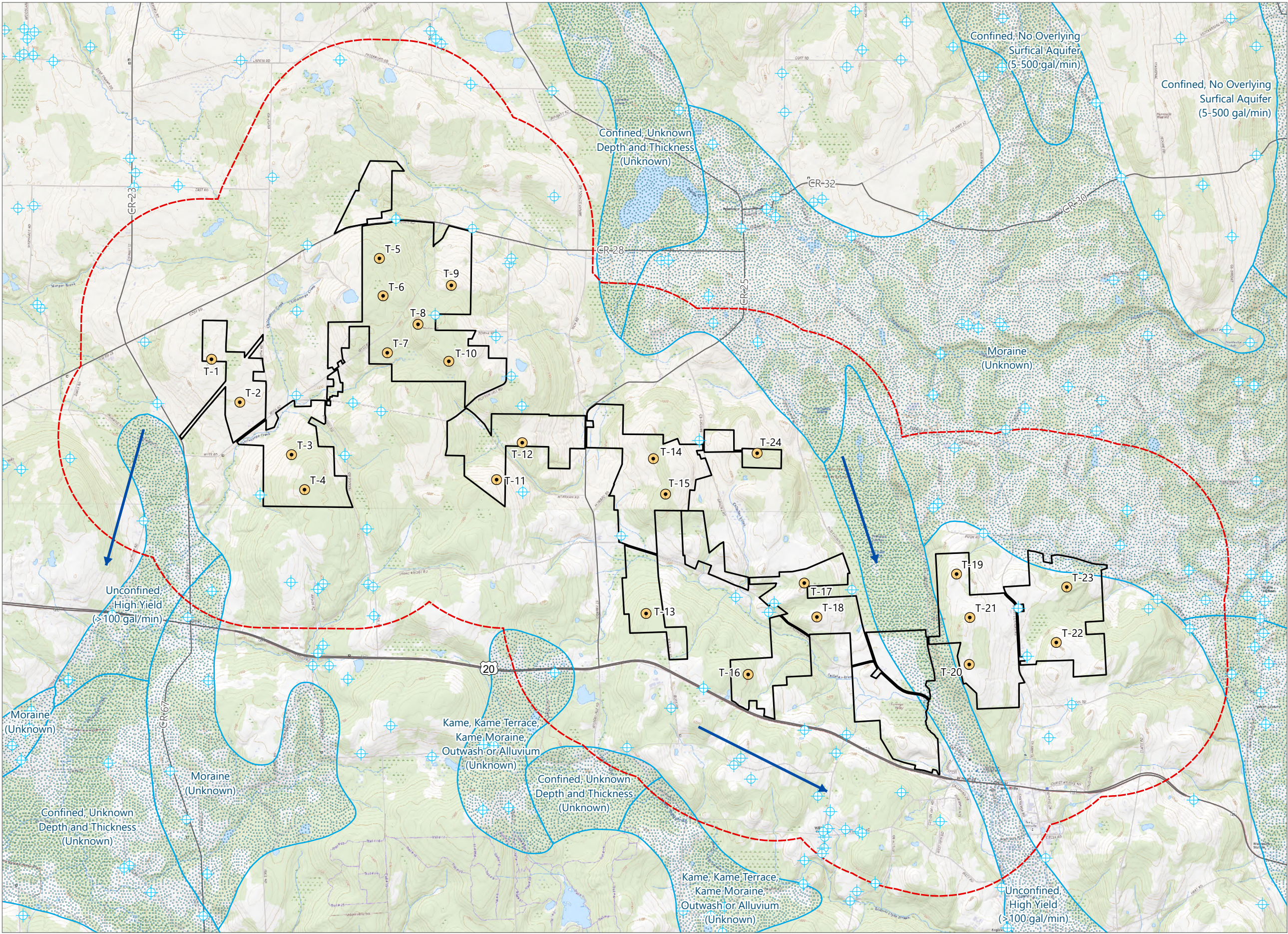
Figure 13-2. Groundwater Aquifers and Recharge Areas - Revision 1

REDACTED - Matter No. 23-00038

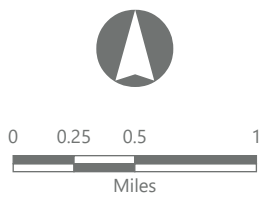
Hoffman Falls Wind

Towns of Eaton, Fenner, Nelson and  
Smithfield, Madison County,  
New York

Section 94-c Second Supplement  
Matter No. 23-0038



- ⊕ Private Well - REDACTED
- ⊕ NYSDEC-Mapped Water Well
- ➔ Direction of Groundwater Flow
- Unconsolidated Aquifers
- Facility Components
- Wind Turbine
- ▭ Facility Site
- 1-mile Study Area



Prepared August 23, 2024  
Basemap: Esri "USGS Topo" map service