

PHOTOSIMULATION



Note: Printed at actual size, the resulting simulation image is 15 inches wide by 10 inches high. At this size and focal length, the simulation should be viewed from a distance 21 inches from the eye of the viewer.

0 1 in 2 in
This scale is designed to insure the simulation images are printed at the intended size.

VIEWPOINT 58
Hardscrabble Road

Hoffman Falls Wind Project
Towns of Eaton, Fenner, Nelson, and Smithfield, Madison County, New York



REVISED PHOTOSIMULATION



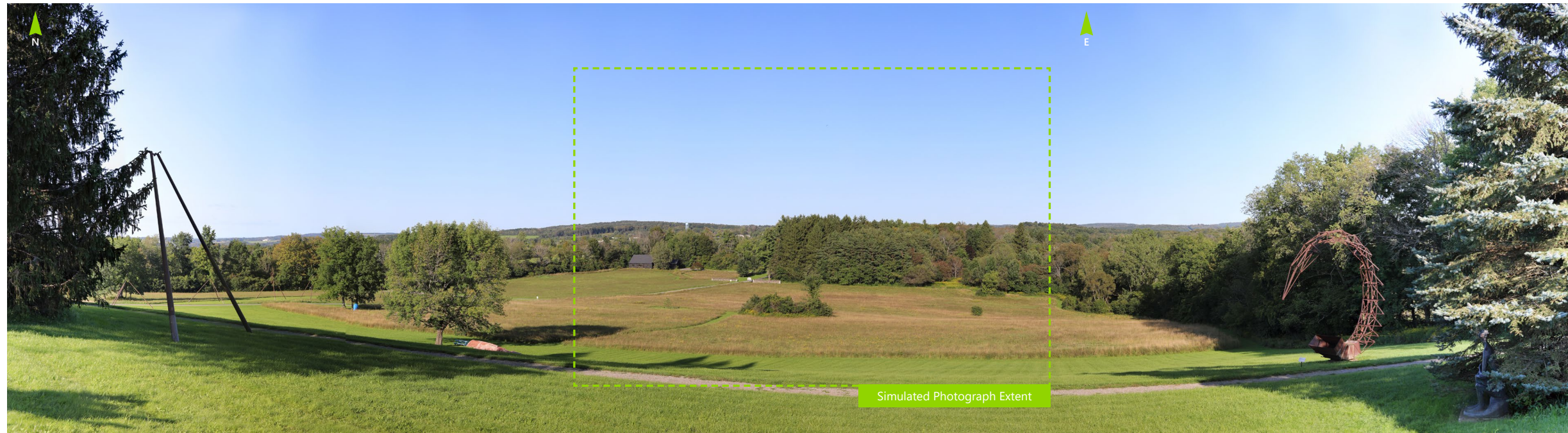
0 1 in 2 in
This scale is designed to insure the simulation images are printed at the intended size.

VIEWPOINT 58
Hardscrabble Road

Hoffman Falls Wind Project
Towns of Eaton, Fenner, Nelson, and Smithfield, Madison County, New York



Note: Printed at actual size, the resulting simulation image is 15 inches wide by 10 inches high. At this size and focal length, the simulation should be viewed from a distance 21 inches from the eye of the viewer.



Note: The image above is a panorama photograph taken from Cazenovia Art Park in the Town of Cazenovia panning clockwise from north (left) to southeast (right). The green rectangle represents the extent of the simulated photograph.

VIEWPOINT 60
Cazenovia Art Park

VIEWPOINT INFORMATION

Location: Cazenovia Art Park
Town: Cazenovia
County: Madison
Latitude: 42.91162° N
Longitude: 75.83416° W

LOCATION INFORMATION

Distance Zone Represented in View: Background
Viewer Distance*: 4.0 miles
Landscape Similarity Zone: Agricultural/Rural
 Residential
Viewer/User Group(s): Local Residents, Tourists/
 Recreational Users

Visually Sensitive Resource(s): Erie Canalway
 National Heritage Corridor, Stone Quarry Hill Art
 Park, Dorothy Riester House & Studio

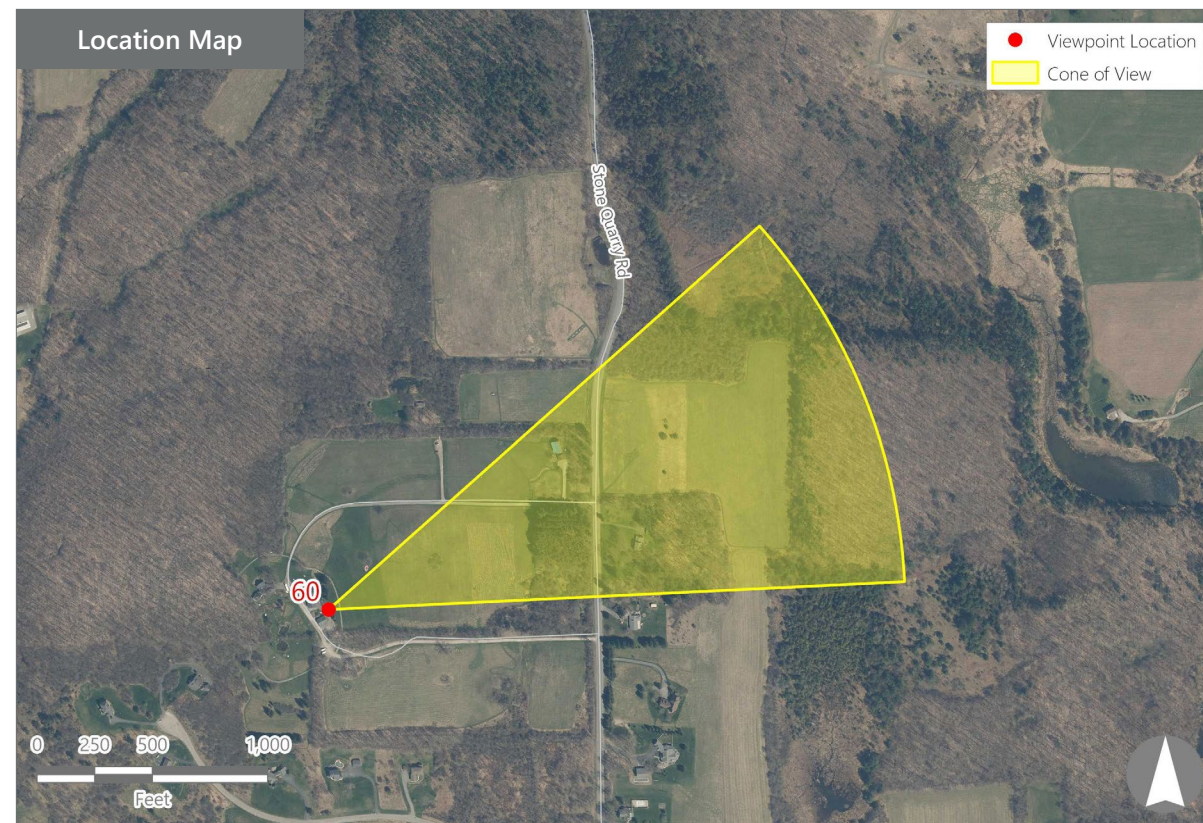
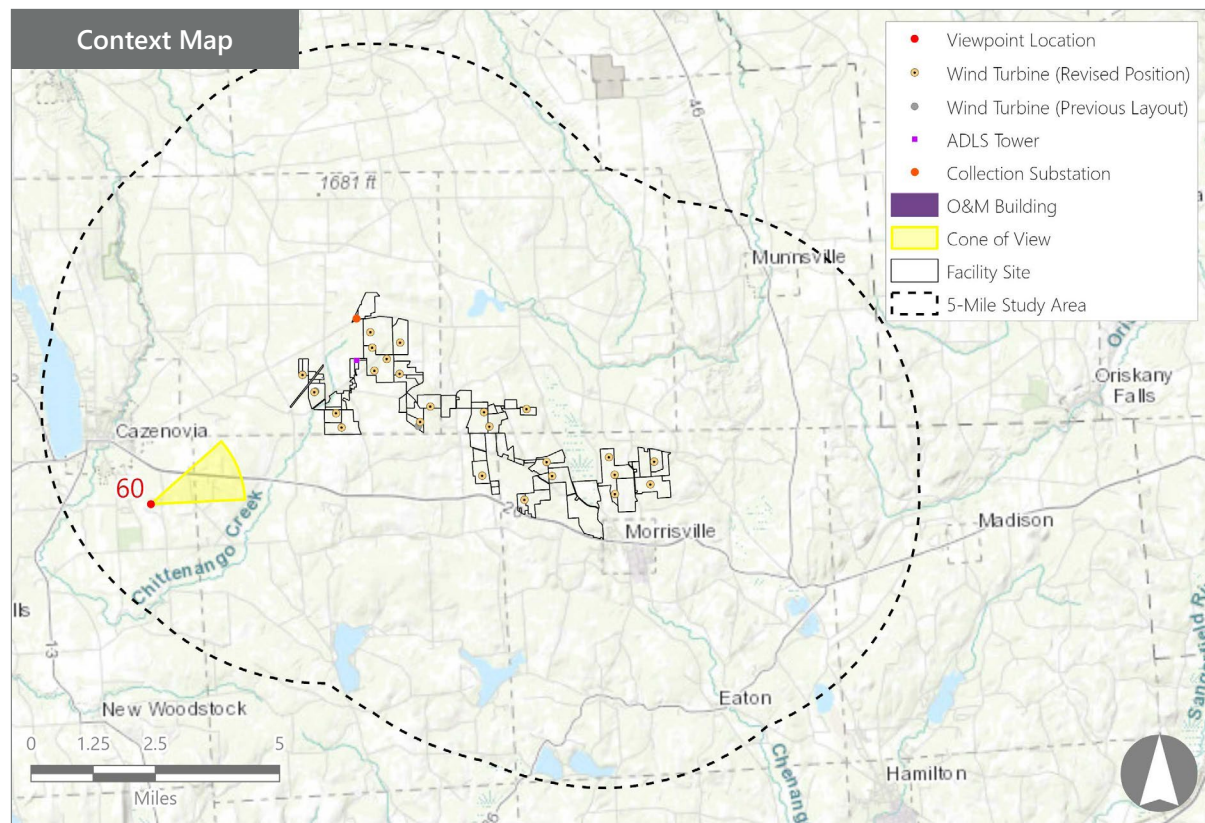
PHOTOGRAPH INFORMATION

Date: August 31, 2023
Time: 5:24 PM
Camera: Canon EOS 5D Mark IV
Resolution: 24 Megapixels
Lens Focal Length (35mm equivalent): 50 mm
Camera Elevation: 1,612 feet
Field of View: 39 degrees
Direction of View: East-northeast
Printed Size: 10" x 15"
Viewing Distance:** 21"

NOTES

*Distance as measured from the viewpoint to the closest wind turbine generator within the simulated photograph's field of view

**The simulation is at the correct perspective when printed on an 11 inch by 17 inch sheet at full scale, and viewed approximately 21 inches from the eye of the viewer.



Hoffman Falls Wind Project

Towns of Eaton, Fenner, Nelson, and Smithfield, Madison County, New York

Visual Impact Assessment Addendum
 Appendix 8-A

Viewpoint Sensitivity¹:

Scenic Quality:

- Low
- Moderate
- High

Viewer Exposure

Frequency:

- Rare
- Occasional
- Regular/Repeated

Duration of View:

- Short/Brief/Fleeting
- Moderate
- Long

¹Viewpoint Sensitivity information is gathered from rating panel results. Scenic Quality is an average based on Low = 1, Moderate = 2, High = 3. Viewer Exposure reflects all those selected by the review panel.

Contrast Rating Scores²:

Component	Score		Contrast Rating
	Install		
Landform	0.8		Minimal
Vegetation	1.0		Minimal
Land Use	1.0		Minimal
Water	N/A		N/A
Sky	1.2		Minimal
Viewer Activity	1.3		Minimal/Moderate
AVERAGE	1.1		Minimal

² Contrast Rating Scale: 0.0 - 0.2 (Insignificant), 0.3 - 0.7 (Insignificant/Minimal), 0.8 - 1.2 (Minimal), 1.3 - 1.7 (Minimal/Moderate), 1.8 - 2.2 (Moderate), 2.3 - 2.7 (Moderate/Appreciable), 2.8 - 3.2 (Appreciable) 3.3 - 3.7 (Appreciable/Strong), 3.8 - 4.0 (Strong).

Contrast Rating - Lowest and Highest Scores:

Component	Post - Install	
	Score	
	Low	High
Landform	0.5	1.0
Vegetation	0.5	1.5
Land Use	0.5	1.5
Water	NA	NA
Sky	1.0	1.5
Viewer Activity	1.0	2.0

Existing View



Proposed View (Post Installation)



Existing View

Viewpoint 60 is located in Cazenovia Art Park in the Town of Cazenovia, approximately 4 miles from the nearest proposed wind turbine that would be visible in the selected photo's field of view. This viewpoint occurs in an outdoor sculpture garden located within the Agricultural/Rural Residential LSZ. Typical viewers at this location would be local residents and tourists/recreational users visiting the park to view sculptures placed within a park-like setting. In the existing view to the east-northeast, several sculptures are present, but just outside the selected photo's field of view. The selected view is from a slightly elevated section of mown lawn that descends gently downward to brownish-green meadow that is broken by a mown pathway and patches of scrubby vegetation. The pathway traverses the middle ground and passes through a stone wall before disappearing into verdant forestland. The Dorothy Riester House & Studio, a dark gray gabled frame building, occurs within the tree line at the far side of the meadow, and serves as a focal point that draws the viewer's eye to the left. As they extend into the background, the trees are layered with a near line and a far line beginning at the center of the view. The far tree line is at a lower elevation and allows for more distant views. Distant views are still wooded but are broken by the roofs of buildings. A distant water tower with a blue hue provides an additional focal point that draws the viewer attention to the forested horizon line. The sky beyond the horizon is clear and blue. The view has a park-like character in a wooded rural setting and is considered to have high scenic quality.

Proposed View

With the proposed Project in place, a line of wind turbines is now visible above the forested horizon line on the left. The extent of turbine visibility is variable, with some largely unobstructed and others partially screened by the background ridgeline. Turbines in the right half of the view are largely obscured by the nearer tree line. Distance from the viewer minimizes the turbines' scale contrast, and their white color results in relatively minor color contrast with the sky. However, their presence along the formerly open horizon line and the dark shadows on the near face of the turbine blades increases their visibility. Although they occur in a portion of the view that already features buildings and a water tower, the turbines add visual clutter and introduce new vertical man-made features to a largely forested landscape. The wind turbines and the movement of the blades may become new focal points in the view but are far enough away that they are unlikely to draw viewer attention away from sculptures within the park. According to the rating panel, scenic quality of this view with the Project in place remains high and the contrast introduced is anticipated to be minimal.

Hoffman Falls Wind Project

Towns of Eaton, Fenner, Nelson, and Smithfield, Madison County, New York

EXISTING VIEW



0 1 in 2 in
This scale is designed to insure the simulation images are printed at the intended size.

VIEWPOINT 60

Cazenovia Art Park

Hoffman Falls Wind Project
Towns of Eaton, Fenner, Nelson, and Smithfield, Madison County, New York

EDR

Note: Printed at actual size, the existing view image is 15 inches wide by 10 inches high. At this size and focal length, the existing view image should be viewed from a distance 21 inches from the eye of the viewer.

PHOTOSIMULATION



0 1 in 2 in
This scale is designed to insure the simulation images are printed at the intended size.

VIEWPOINT 60
Cazenovia Art Park

Hoffman Falls Wind Project
Towns of Eaton, Fenner, Nelson, and Smithfield, Madison County, New York



Note: Printed at actual size, the resulting simulation image is 15 inches wide by 10 inches high. At this size and focal length, the simulation should be viewed from a distance 21 inches from the eye of the viewer.

REVISED PHOTOSIMULATION



0 1 in 2 in
This scale is designed to insure the simulation images are printed at the intended size.

VIEWPOINT 60
Cazenovia Art Park

Hoffman Falls Wind Project
Towns of Eaton, Fenner, Nelson, and Smithfield, Madison County, New York



Note: Printed at actual size, the resulting simulation image is 15 inches wide by 10 inches high. At this size and focal length, the simulation should be viewed from a distance 21 inches from the eye of the viewer.



Note: The image above is a panorama photograph taken from US Route 20 in the Town of Cazenovia panning clockwise from northeast (left) to southeast (right). The green rectangle represents the extent of the simulated photograph.

VIEWPOINT 61
US Route 20

VIEWPOINT INFORMATION

Location: US Route 20
Town: Cazenovia
County: Madison
Latitude: 42.92994° N
Longitude: 75.85404° W

LOCATION INFORMATION

Distance Zone Represented in View: Background
Viewer Distance*: 4.5 miles
Landscape Similarity Zone: Village
Viewer/User Group(s): Local Residents, Tourists/
Recreational Users, Through-Travelers
Visually Sensitive Resource(s): Scenic Route 20,
US Route 20, Memorial Park, Erie Canalway National
Heritage Corridor, Albany Street Historic District,
Cazenovia Village Historic District,
Village of Cazenovia

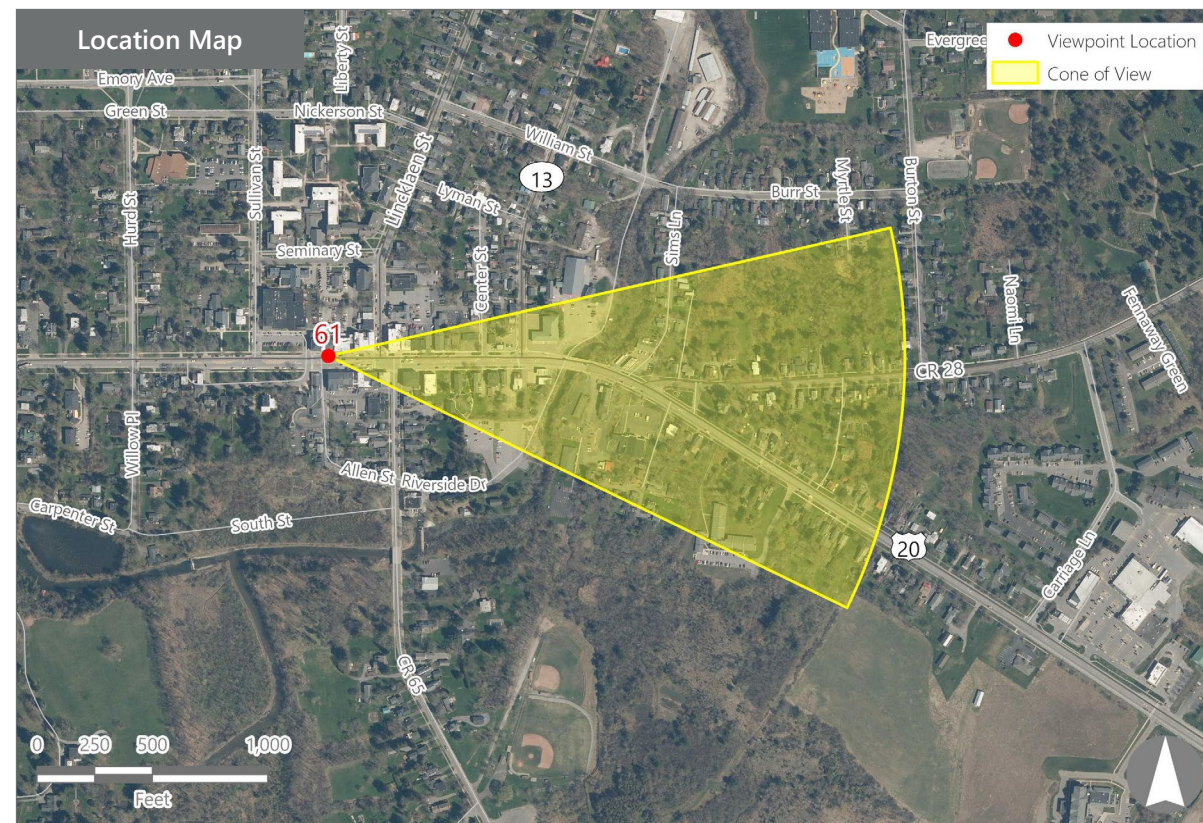
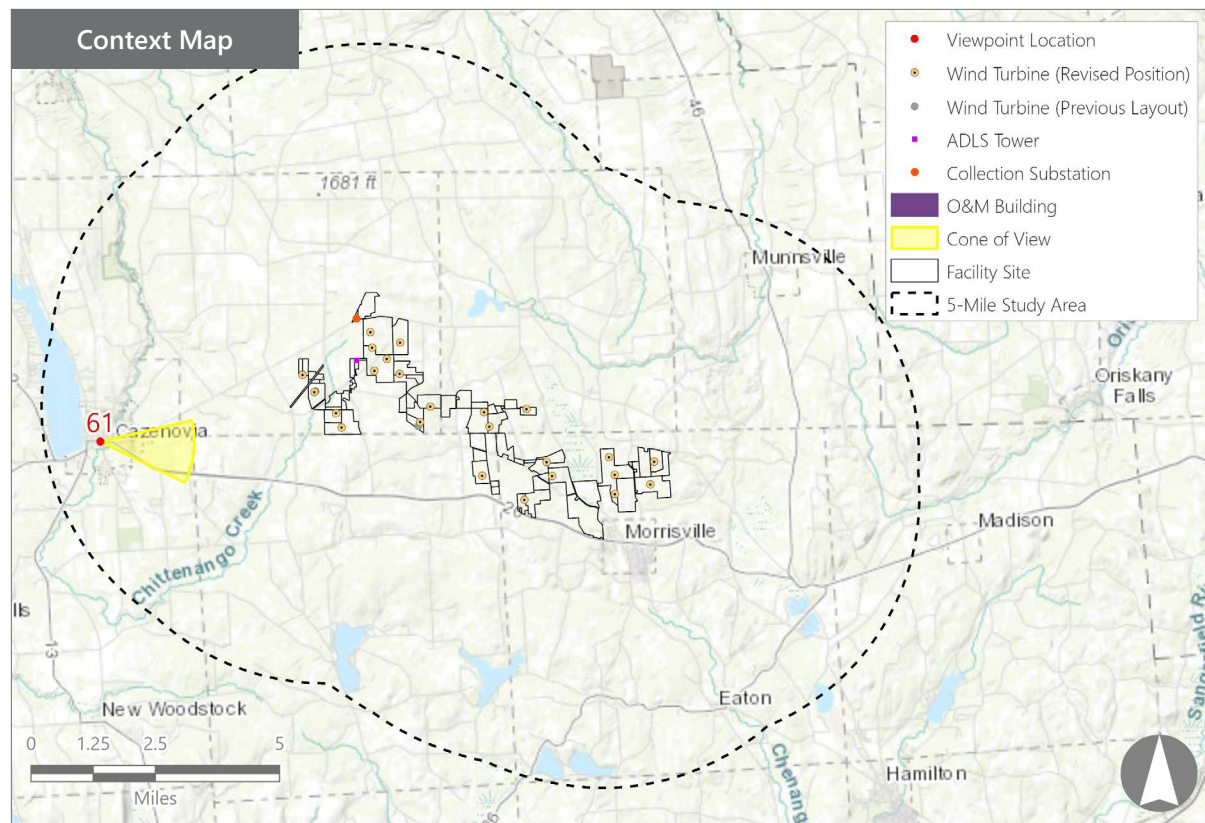
PHOTOGRAPH INFORMATION

Date: August 31, 2023
Time: 5:35 PM
Camera: Canon EOS 5D Mark IV
Resolution: 24 Megapixels
Lens Focal Length (35mm equivalent): 50 mm
Camera Elevation: 1,230 feet
Field of View: 39 degrees
Direction of View: East
Printed Size: 10" x 15"
Viewing Distance:** 21"

NOTES

*Distance as measured from the viewpoint to the closest wind turbine generator within the simulated photograph's field of view

**The simulation is at the correct perspective when printed on an 11 inch by 17 inch sheet at full scale, and viewed approximately 21 inches from the eye of the viewer.



Hoffman Falls Wind Project

Towns of Eaton, Fenner, Nelson, and Smithfield, Madison County, New York

Visual Impact Assessment Addendum
Appendix 8-A

EXISTING VIEW



0 1 in 2 in
This scale is designed to insure the simulation images are printed at the intended size.

VIEWPOINT 61
US Route 20

Hoffman Falls Wind Project
Towns of Eaton, Fenner, Nelson, and Smithfield, Madison County, New York

EDR

Note: Printed at actual size, the existing view image is 15 inches wide by 10 inches high. At this size and focal length, the existing view image should be viewed from a distance 21 inches from the eye of the viewer.

WIREFRAME RENDERING



0 1 in 2 in
This scale is designed to insure the simulation images are printed at the intended size.

VIEWPOINT 61

US Route 20

Hoffman Falls Wind Project
Towns of Eaton, Fenner, Nelson, and Smithfield, Madison County, New York

EDR

Note: Printed at actual size, the resulting wireframe rendering image is 15 inches wide by 10 inches high. At this size and focal length, the simulation should be viewed from a distance 21 inches from the eye of the viewer.

REVISED WIREFRAME RENDERING



0 1 in 2 in
This scale is designed to insure the simulation images are printed at the intended size.

VIEWPOINT 61

US Route 20

Hoffman Falls Wind Project
Towns of Eaton, Fenner, Nelson, and Smithfield, Madison County, New York

EDR

Note: Printed at actual size, the resulting wireframe rendering image is 15 inches wide by 10 inches high. At this size and focal length, the simulation should be viewed from a distance 21 inches from the eye of the viewer.



Note: The image above is a panorama photograph taken from US Route 20 in the Town of Cazenovia panning clockwise from northeast (left) to southeast (right). The green rectangle represents the extent of the simulated photograph.

VIEWPOINT 62
US Route 20

VIEWPOINT INFORMATION

Location: US Route 20
Town: Cazenovia
County: Madison
Latitude: 42.92985° N
Longitude: 75.85939° W

LOCATION INFORMATION

Distance Zone Represented in View: Background
Viewer Distance*: 4.6 miles
Landscape Similarity Zone: Water
Viewer/User Group(s): Local Residents, Tourists/
Recreational Users, Through-Travelers

Visually Sensitive Resource(s): Scenic Route 20, US Route 20, Hill 'n Valley, Bike Hike Cazenovia Lake, Bicentennial Architectural Trail, Magnificent Madison, Village of Cazenovia, Albany Street Historic District, Cazenovia Village Historic District, Lakeland Park, Erie Canalway National Heritage Corridor

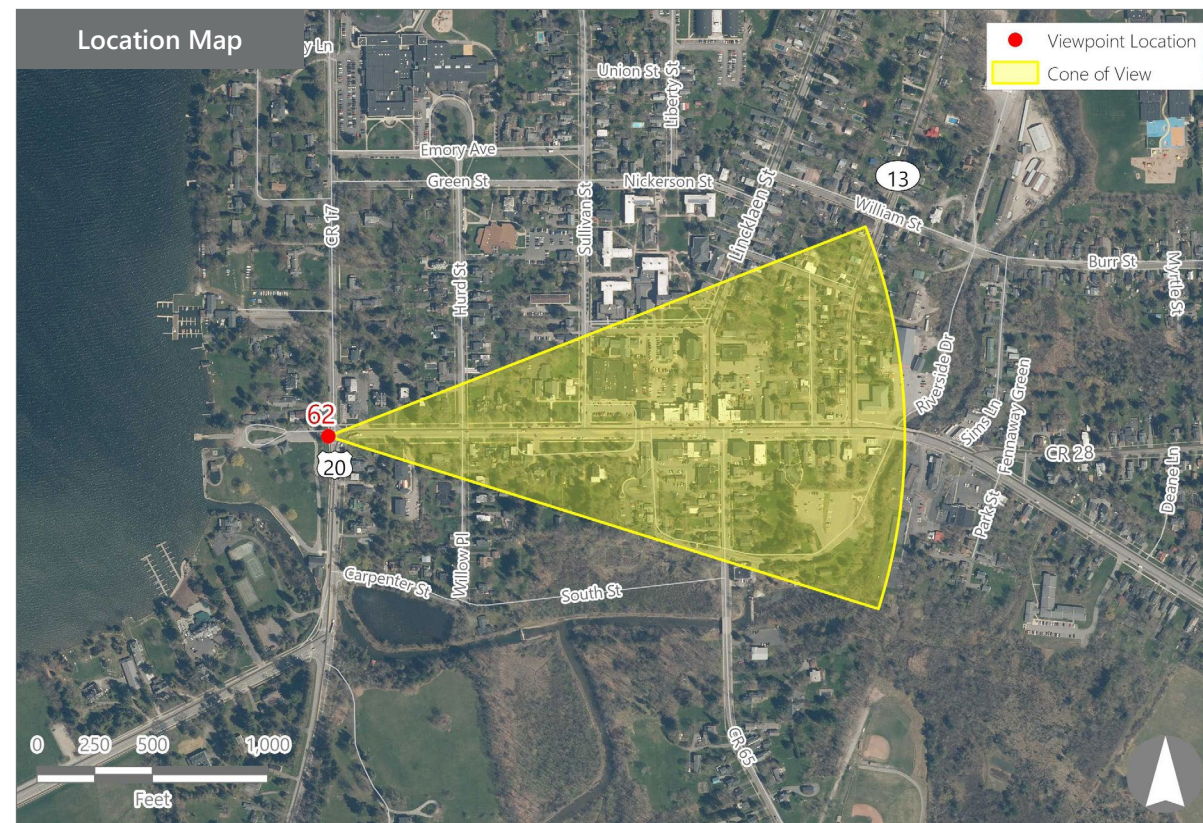
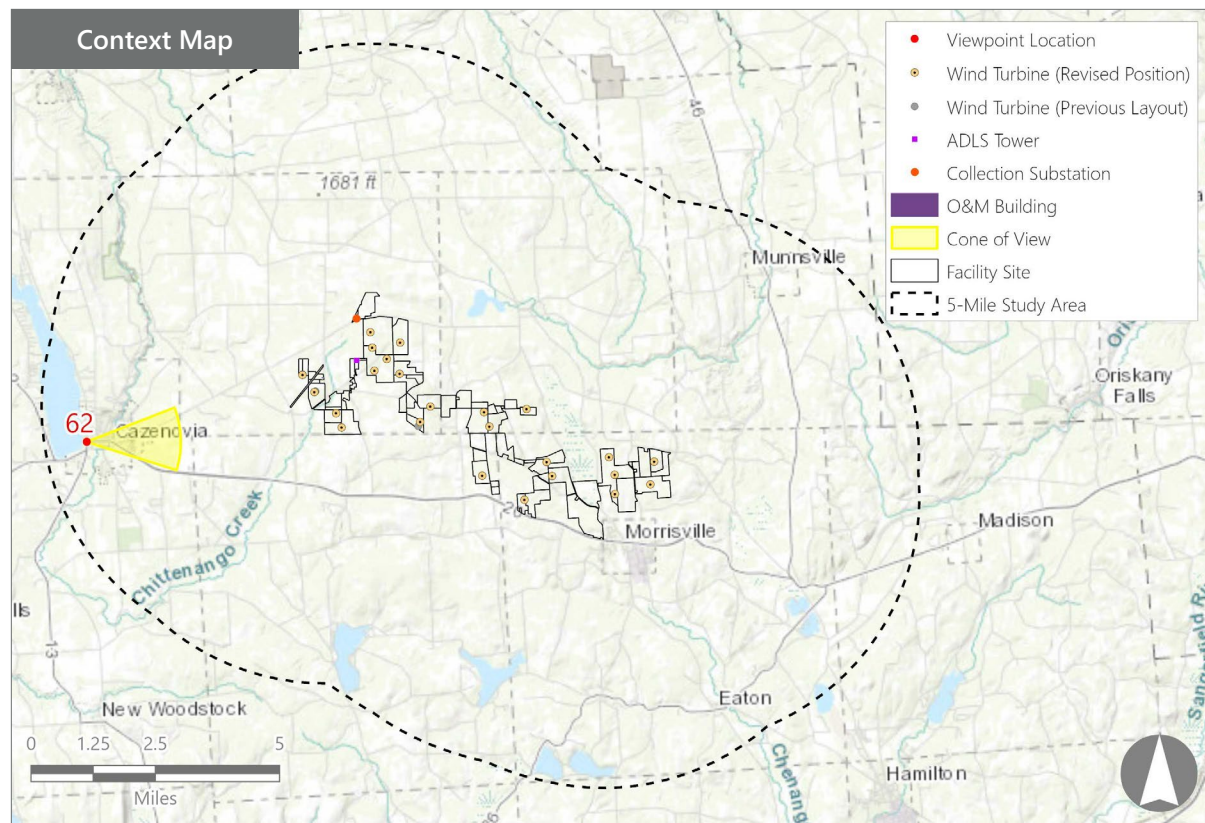
PHOTOGRAPH INFORMATION

Date: August 31, 2023
Time: 5:39 PM
Camera: Canon EOS 5D Mark IV
Resolution: 24 Megapixels
Lens Focal Length (35mm equivalent): 50 mm
Camera Elevation: 1,210 feet
Field of View: 39 degrees
Direction of View: East
Printed Size: 10" x 15"
Viewing Distance:** 21"

NOTES

*Distance as measured from the viewpoint to the closest wind turbine generator within the simulated photograph's field of view

**The simulation is at the correct perspective when printed on an 11 inch by 17 inch sheet at full scale, and viewed approximately 21 inches from the eye of the viewer.



Hoffman Falls Wind Project

Towns of Eaton, Fenner, Nelson, and Smithfield, Madison County, New York

Visual Impact Assessment Addendum
Appendix 8-A

EXISTING VIEW



Note: Printed at actual size, the existing view image is 15 inches wide by 10 inches high. At this size and focal length, the existing view image should be viewed from a distance 21 inches from the eye of the viewer.

VIEWPOINT 62
US Route 20

0 1 in 2 in
This scale is designed to insure the simulation images are printed at the intended size.

WIREFRAME RENDERING



Note: Printed at actual size, the resulting wireframe rendering image is 15 inches wide by 10 inches high. At this size and focal length, the simulation should be viewed from a distance 21 inches from the eye of the viewer.

REVISED WIREFRAME RENDERING



Note: Printed at actual size, the resulting wireframe rendering image is 15 inches wide by 10 inches high. At this size and focal length, the simulation should be viewed from a distance 21 inches from the eye of the viewer.



Note: The image above is a panorama photograph taken from Lorenzo State Historic Site in the Town of Cazenovia panning clockwise from northeast (left) to southeast (right). The green rectangle represents the extent of the simulated photograph.

VIEWPOINT 63
Lorenzo State Historic Site

VIEWPOINT INFORMATION

Location: Lorenzo State Historic Site
Town: Cazenovia
County: Madison
Latitude: 42.92102° N
Longitude: 75.86273° W

LOCATION INFORMATION

Distance Zone Represented in View: Background
Viewer Distance*: 4.9 miles
Landscape Similarity Zone: Agricultural/Rural
 Residential
Viewer/User Group(s): Local Residents and
 Tourist/Recreation Users

Visually Sensitive Resource(s): Lorenzo State Historic Site, Erie Canalway National Heritage Corridor, Lorenzo State Historic Site, Cazenovia Village Historic District, Lorenzo, Rippleton Schoolhouse, Village of Cazenovia

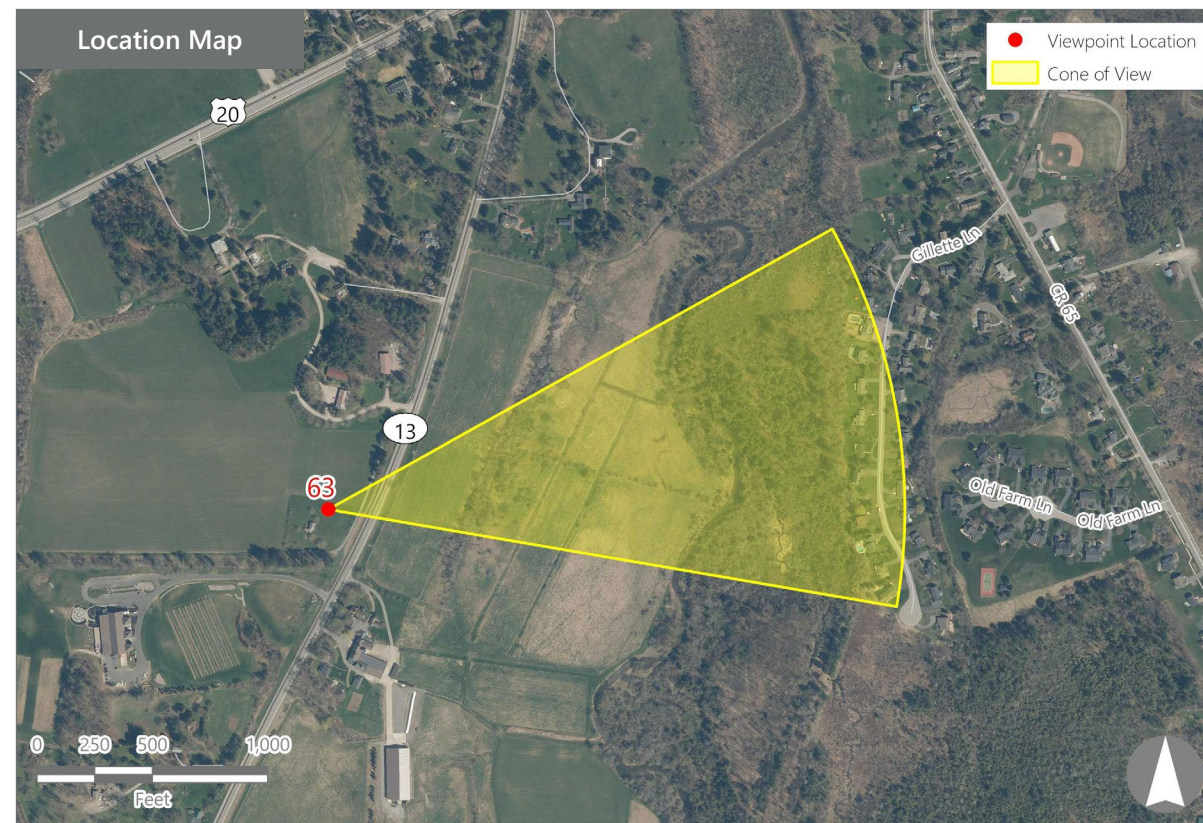
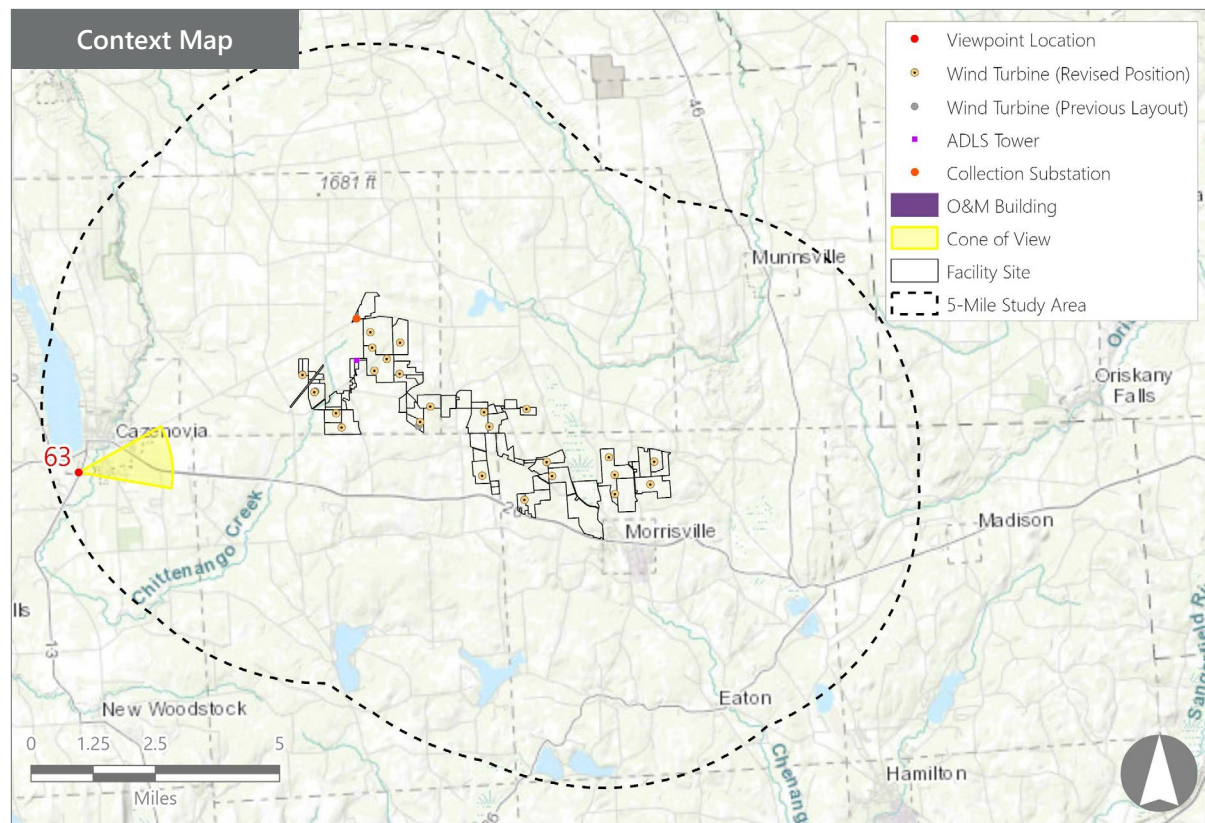
PHOTOGRAPH INFORMATION

Date: August 31, 2023
Time: 5:50 PM
Camera: Canon EOS 5D Mark IV
Resolution: 24 Megapixels
Lens Focal Length (35mm equivalent): 50 mm
Camera Elevation: 1,239 feet
Field of View: 39 degrees
Direction of View: East
Printed Size: 10" x 15"
Viewing Distance:** 21"

NOTES

*Distance as measured from the viewpoint to the closest wind turbine generator within the simulated photograph's field of view

**The simulation is at the correct perspective when printed on an 11 inch by 17 inch sheet at full scale, and viewed approximately 21 inches from the eye of the viewer.



Hoffman Falls Wind Project

Towns of Eaton, Fenner, Nelson, and Smithfield, Madison County, New York

Visual Impact Assessment Addendum
Appendix 8-A

Viewpoint Sensitivity¹:

Scenic Quality:

- Low
- Moderate
- High

Viewer Exposure

Frequency:

- Rare
- Occasional
- Regular/Repeated

Duration of View:

- Short/Brief/Fleeting
- Moderate
- Long

¹Viewpoint Sensitivity information is gathered from rating panel results. Scenic Quality is an average based on Low = 1, Moderate = 2, High = 3. Viewer Exposure reflects all those selected by the review panel.

Contrast Rating Scores²:

Component	Score		Contrast Rating
	Install		
Landform	0.5		Insignificant/Minimal
Vegetation	0.5		Insignificant/Minimal
Land Use	0.5		Insignificant/Minimal
Water	N/A		N/A
Sky	0.7		Insignificant/Minimal
Viewer Activity	0.7		Insignificant/Minimal
AVERAGE	0.6		Insignificant/Minimal

² Contrast Rating Scale: 0.0 - 0.2 (Insignificant), 0.3 - 0.7 (Insignificant/Minimal), 0.8 - 1.2 (Minimal), 1.3 - 1.7 (Minimal/Moderate), 1.8 - 2.2 (Moderate), 2.3 - 2.7 (Moderate/Appreciable), 2.8 - 3.2 (Appreciable) 3.3 - 3.7 (Appreciable/Strong), 3.8 - 4.0 (Strong).

Contrast Rating - Lowest and Highest Scores:

Component	Post - Install	
	Score	
	Low	High
Landform	0.0	1.0
Vegetation	0.0	1.0
Land Use	0.0	1.0
Water	NA	NA
Sky	0.0	1.5
Viewer Activity	0.0	1.5

Existing View



Proposed View (Post Installation)



Existing View

Viewpoint 63 is located at the Lorenzo State Historic Site in the Town of Cazenovia, approximately 4.9 miles from the nearest proposed wind turbine that would be visible in the selected photo's field of view. This viewpoint occurs in the Agricultural/Rural Residential LSZ and typical viewers at this location would be local residents and tourists visiting this historic site. In the selected view to the east, there are clear horizontal divisions between the foreground and the background. The foreground includes a broad expanse of green mown lawn associated with the historic site. The middle ground is traversed by a paved road bordered on the near side by a band of unmowed herbaceous vegetation and a gravel pathway. Overhead electrical lines also run parallel to the road, extend across the full width of the view, and extend above the horizon line. A couple of electrical poles and a large tree adjacent to the road draw the attention of the viewer. Beyond the road, the landscape descends where thick and verdant forest obscure views of the landscape until a line of low hills rise in the background. The distant hills are completely wooded save for a large white building that is visible below the horizon. The sky above the horizon line is clear and blue. The rating panel indicated that this view has relatively low scenic quality.

Proposed View

With the proposed Project in place, a few turbines are visible above the horizon line but are heavily obscured by the trees and the overhead electrical lines in the middle ground. Their distance and white color against the blue sky limit the perceptibility of the turbines, and even where fully visible, they are lost amongst the clutter of the existing overhead lines. In the selected view, the electrical lines, poles, and middle ground tree remain the strong visual focus and draw the eye away from the horizon and the proposed Project. The turbines do not alter the character of the existing view, and according to the rating panel, scenic quality of this view with the Project in place and remains consistent with the exiting view.

Hoffman Falls Wind Project

Towns of Eaton, Fenner, Nelson, and Smithfield, Madison County, New York