

Figure 14-1. Delineated Wetlands and Streams

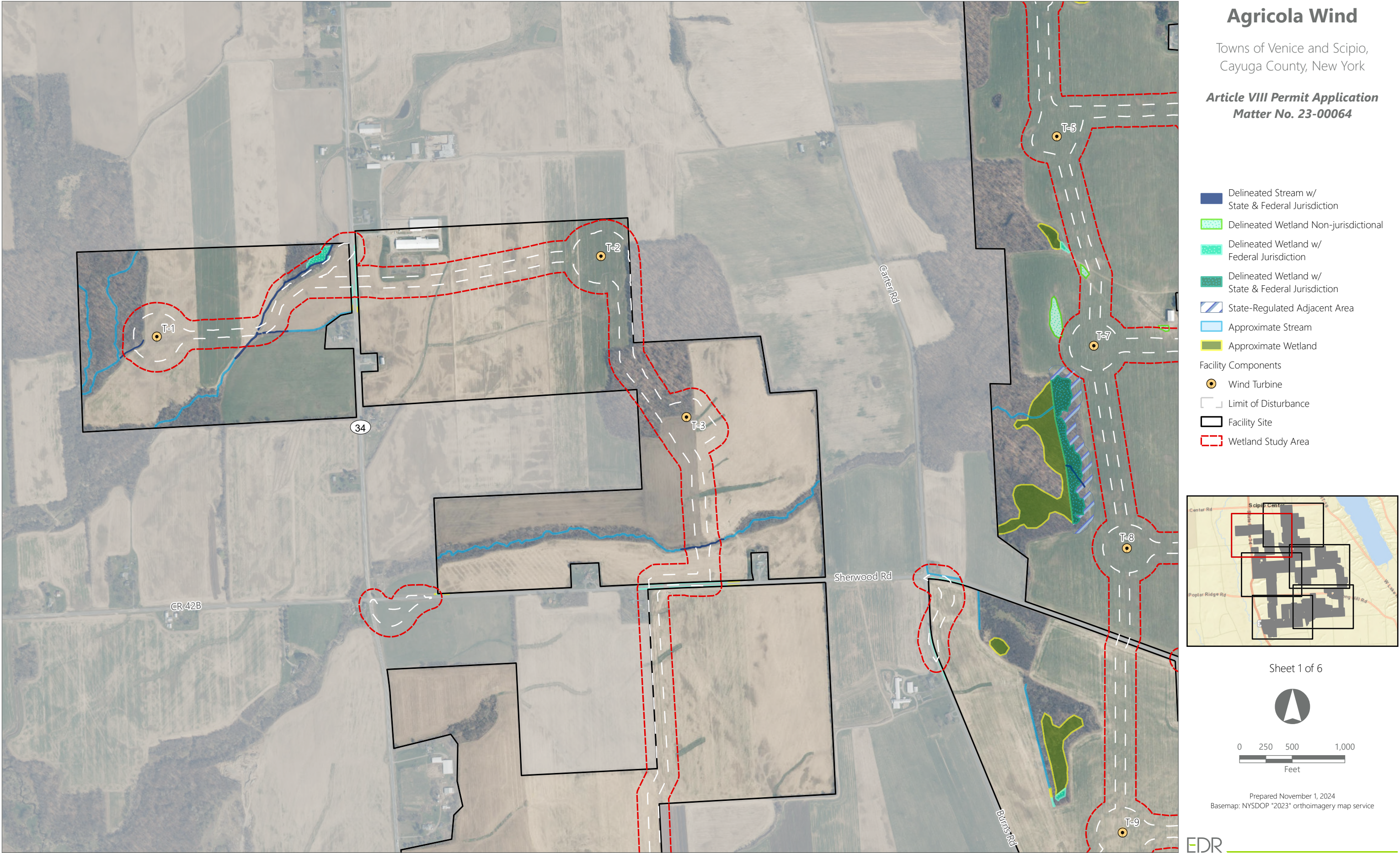
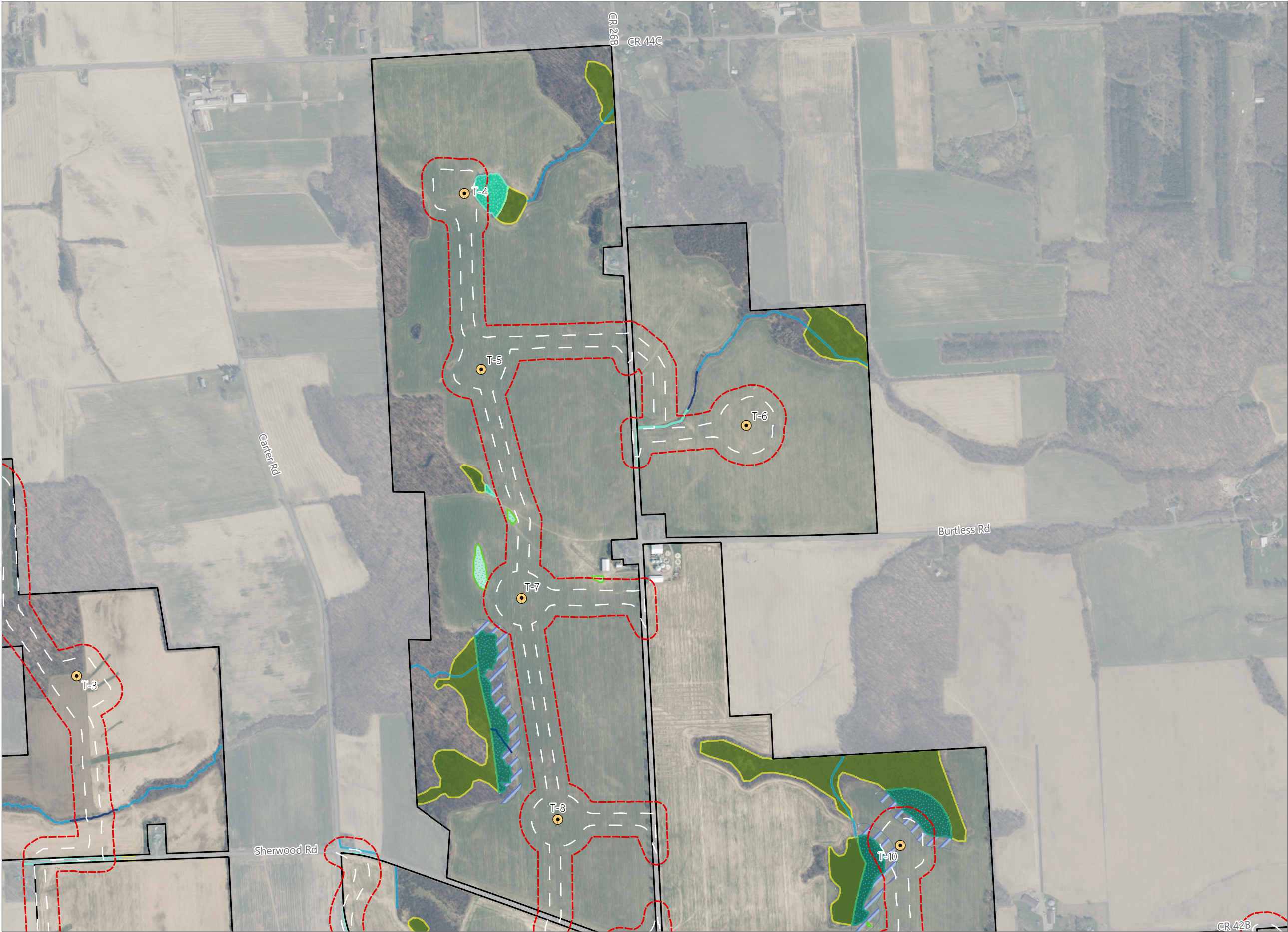


Figure 14-1. Delineated Wetlands and Streams

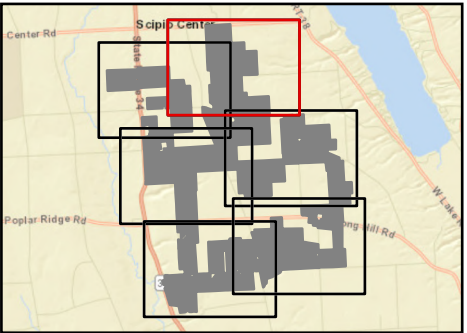


Agricola Wind

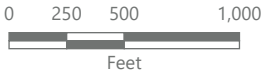
Towns of Venice and Scipio,
Cayuga County, New York

**Article VIII Permit Application
Matter No. 23-00064**

- Delineated Stream w/
State & Federal Jurisdiction
- Delineated Wetland Non-jurisdictional
- Delineated Wetland w/
Federal Jurisdiction
- Delineated Wetland w/
State & Federal Jurisdiction
- State-Regulated Adjacent Area
- Approximate Stream
- Approximate Wetland
- Facility Components
 - Wind Turbine
 - Limit of Disturbance
 - Facility Site
 - Wetland Study Area

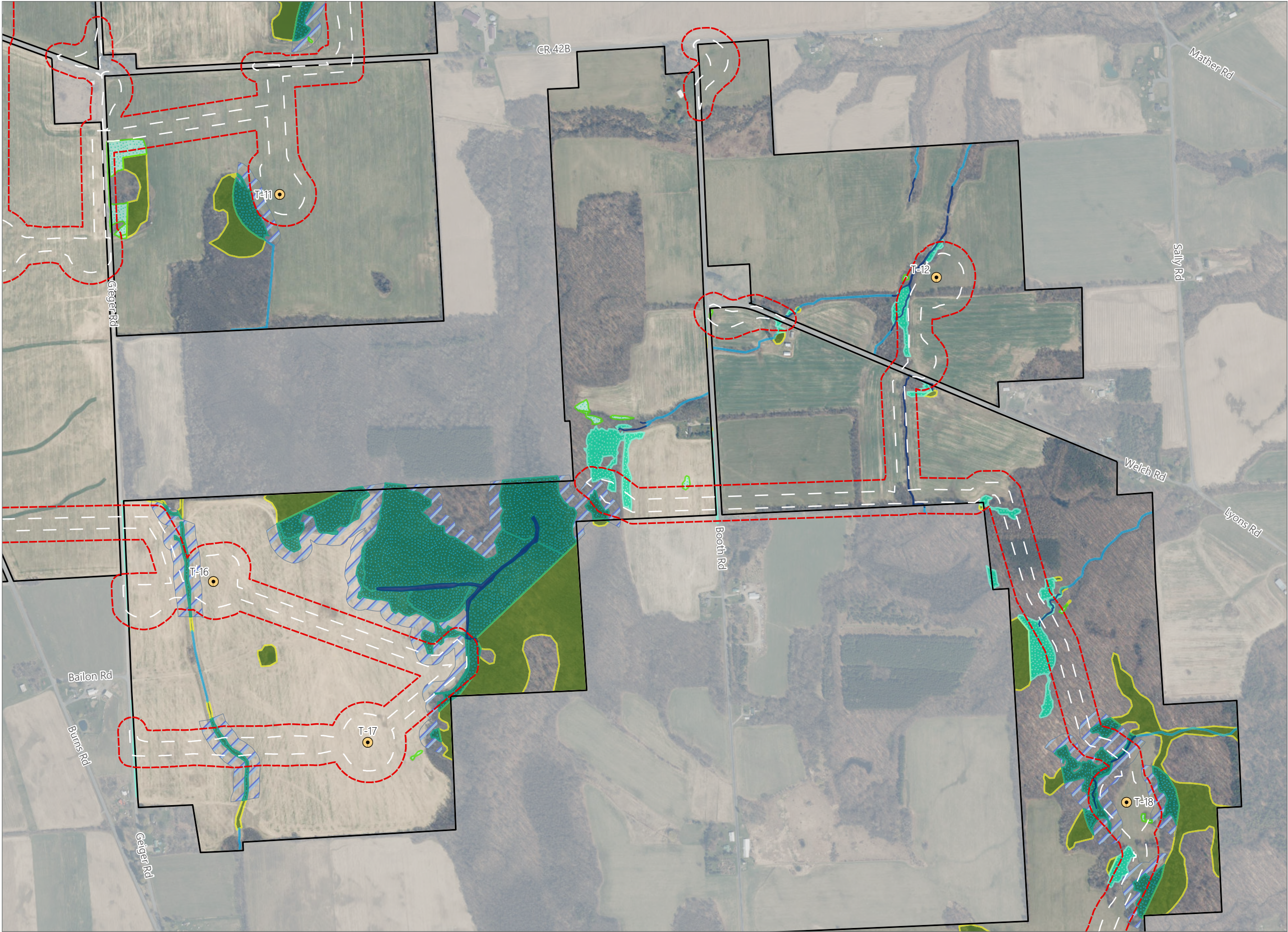


Sheet 2 of 6



Prepared November 1, 2024
Basemap: NYSDOP "2023" orthoimagery map service

Figure 14-1. Delineated Wetlands and Streams

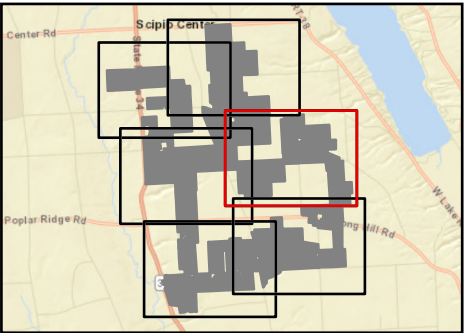


Agricola Wind

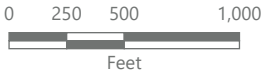
Towns of Venice and Scipio,
Cayuga County, New York

**Article VIII Permit Application
Matter No. 23-00064**

- Delineated Stream w/
State & Federal Jurisdiction
- Delineated Wetland Non-jurisdictional
- Delineated Wetland w/
Federal Jurisdiction
- Delineated Wetland w/
State & Federal Jurisdiction
- State-Regulated Adjacent Area
- Approximate Stream
- Approximate Wetland
- Facility Components
 - Wind Turbine
 - Limit of Disturbance
 - Facility Site
 - Wetland Study Area

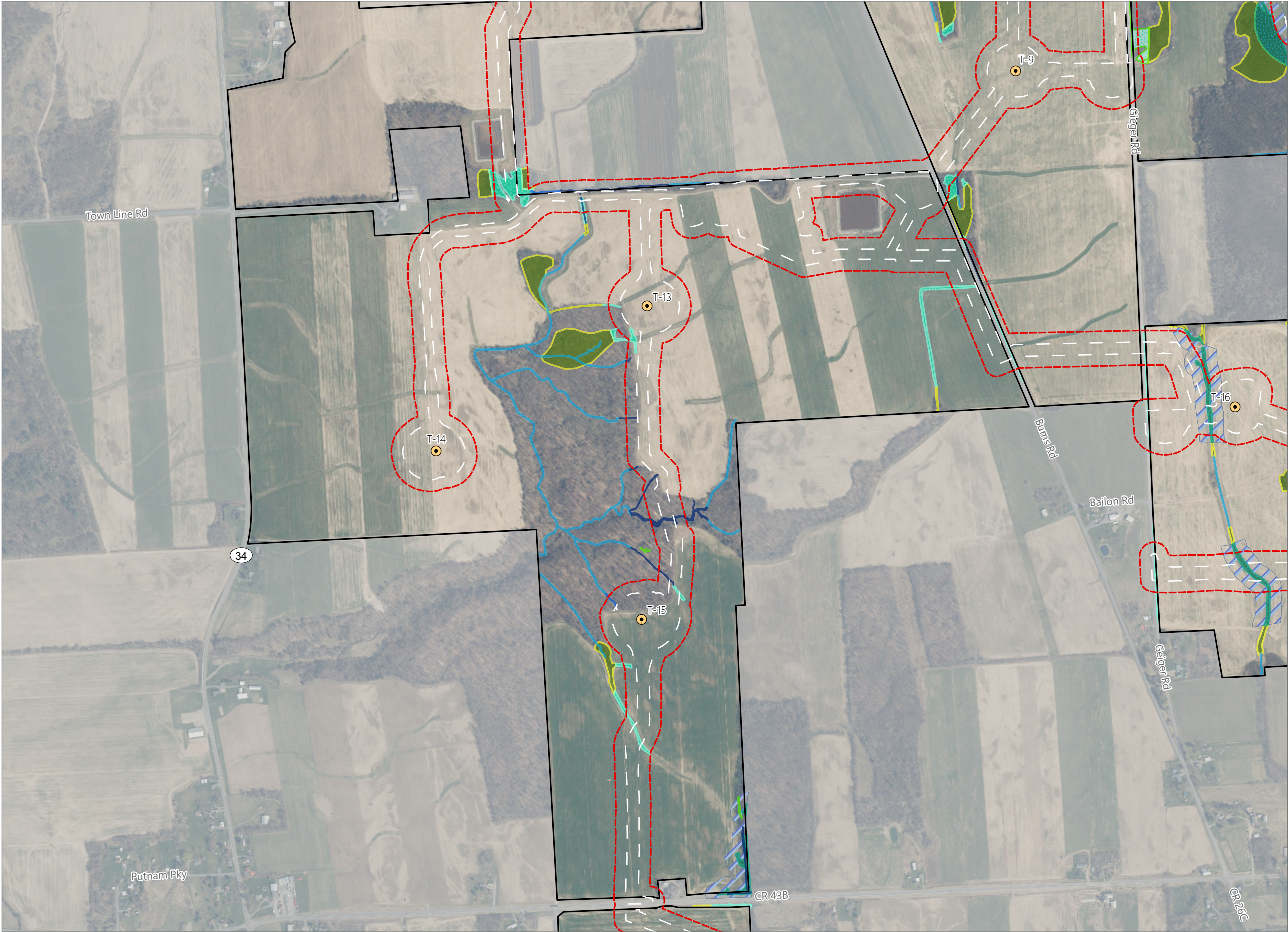


Sheet 3 of 6



Prepared November 1, 2024
Basemap: NYSDOP "2023" orthoimagery map service

Figure 14-1. Delineated Wetlands and Streams

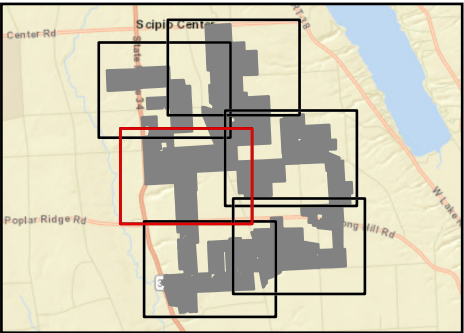


Agricola Wind

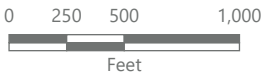
Towns of Venice and Scipio,
Cayuga County, New York

**Article VIII Permit Application
Matter No. 23-00064**

- Delineated Stream w/
Federal Jurisdiction
- Delineated Stream w/
State & Federal Jurisdiction
- Delineated Wetland Non-jurisdictional
- Delineated Wetland w/
Federal Jurisdiction
- Delineated Wetland w/
State & Federal Jurisdiction
- State-Regulated Adjacent Area
- Approximate Stream
- Approximate Wetland
- Facility Components
 - Wind Turbine
 - Limit of Disturbance
 - Facility Site
 - Wetland Study Area

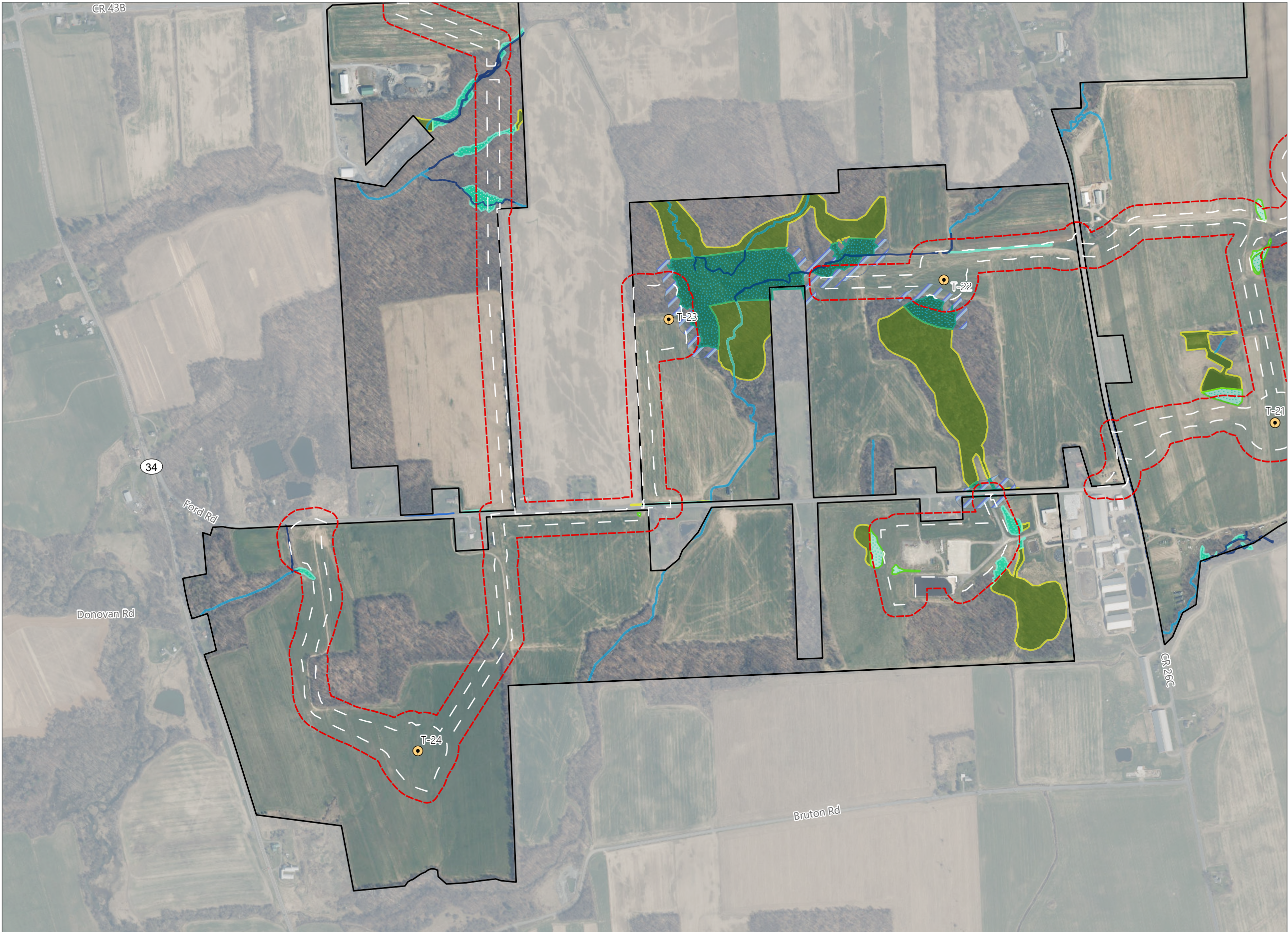


Sheet 4 of 6



Prepared November 1, 2024
Basemap: NYSDOP "2023" orthoimagery map service

Figure 14-1. Delineated Wetlands and Streams

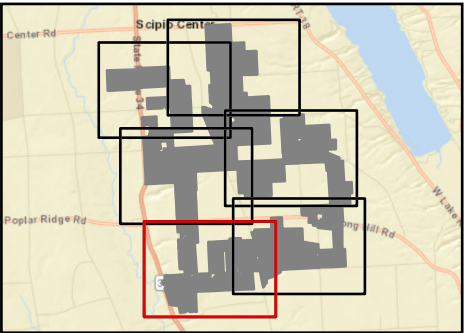


Agricola Wind

Towns of Venice and Scipio,
Cayuga County, New York

**Article VIII Permit Application
Matter No. 23-00064**

- Delineated Stream w/
Federal Jurisdiction
- Delineated Stream w/
State & Federal Jurisdiction
- Delineated Wetland Non-jurisdictional
- Delineated Wetland w/
Federal Jurisdiction
- Delineated Wetland w/
State & Federal Jurisdiction
- State-Regulated Adjacent Area
- Approximate Stream
- Approximate Wetland
- Facility Components
 - Wind Turbine
 - Limit of Disturbance
 - Facility Site
 - Wetland Study Area



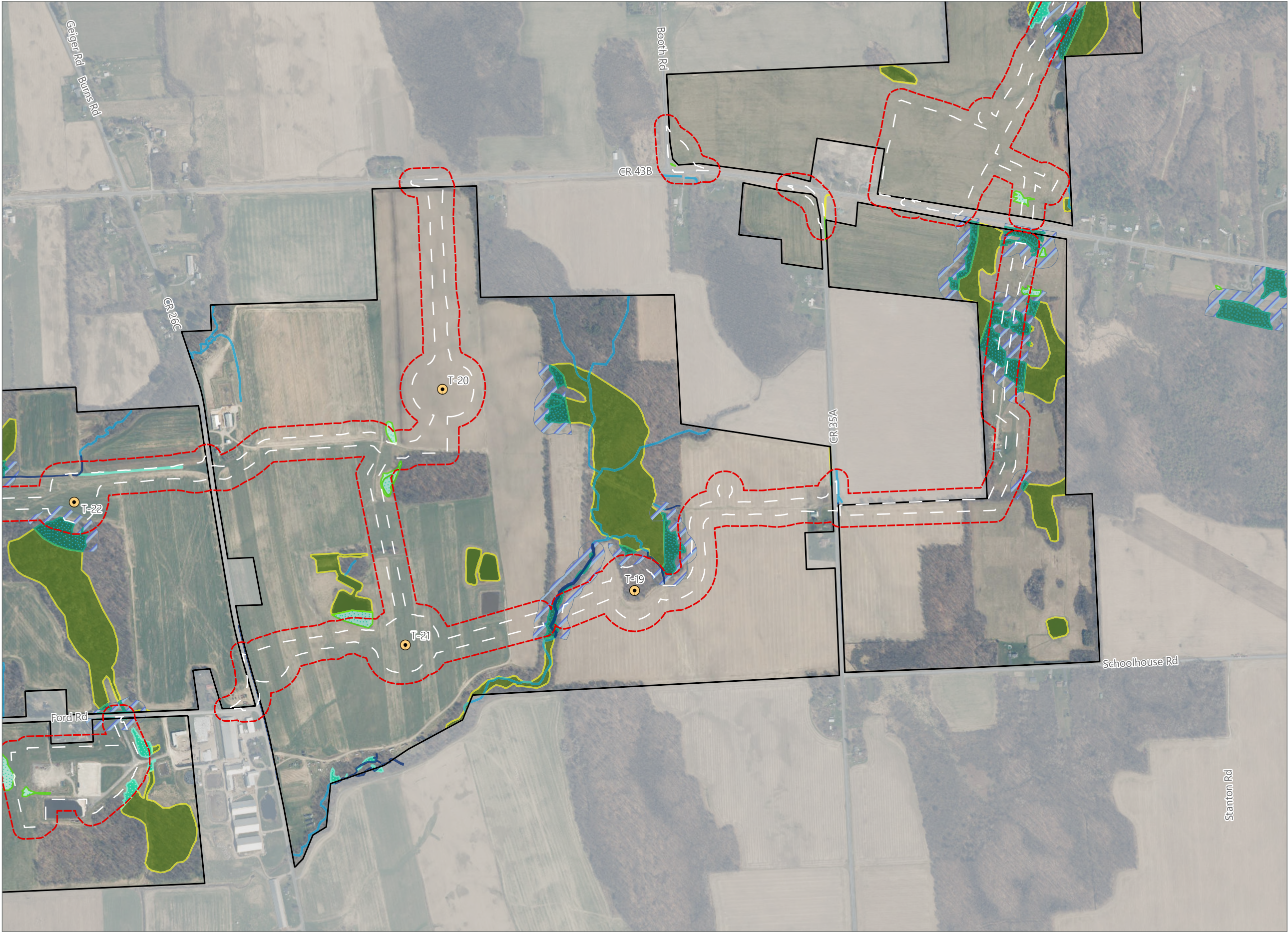
Sheet 5 of 6



0 250 500 1,000
Feet

Prepared November 1, 2024
Basemap: NYSDOP "2023" orthoimagery map service

Figure 14-1. Delineated Wetlands and Streams

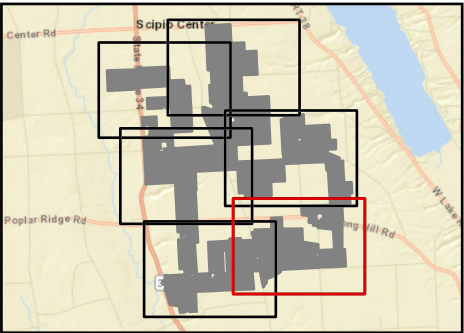


Agricola Wind

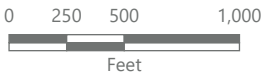
Towns of Venice and Scipio,
Cayuga County, New York

**Article VIII Permit Application
Matter No. 23-00064**

- Delineated Stream w/
State & Federal Jurisdiction
- Delineated Wetland Non-jurisdictional
- Delineated Wetland w/
Federal Jurisdiction
- Delineated Wetland w/
State & Federal Jurisdiction
- State-Regulated Adjacent Area
- Approximate Stream
- Approximate Wetland
- Facility Components
 - Wind Turbine
 - Limit of Disturbance
 - Facility Site
 - Wetland Study Area



Sheet 6 of 6



Prepared November 1, 2024
Basemap: NYSDOP "2023" orthoimagery map service