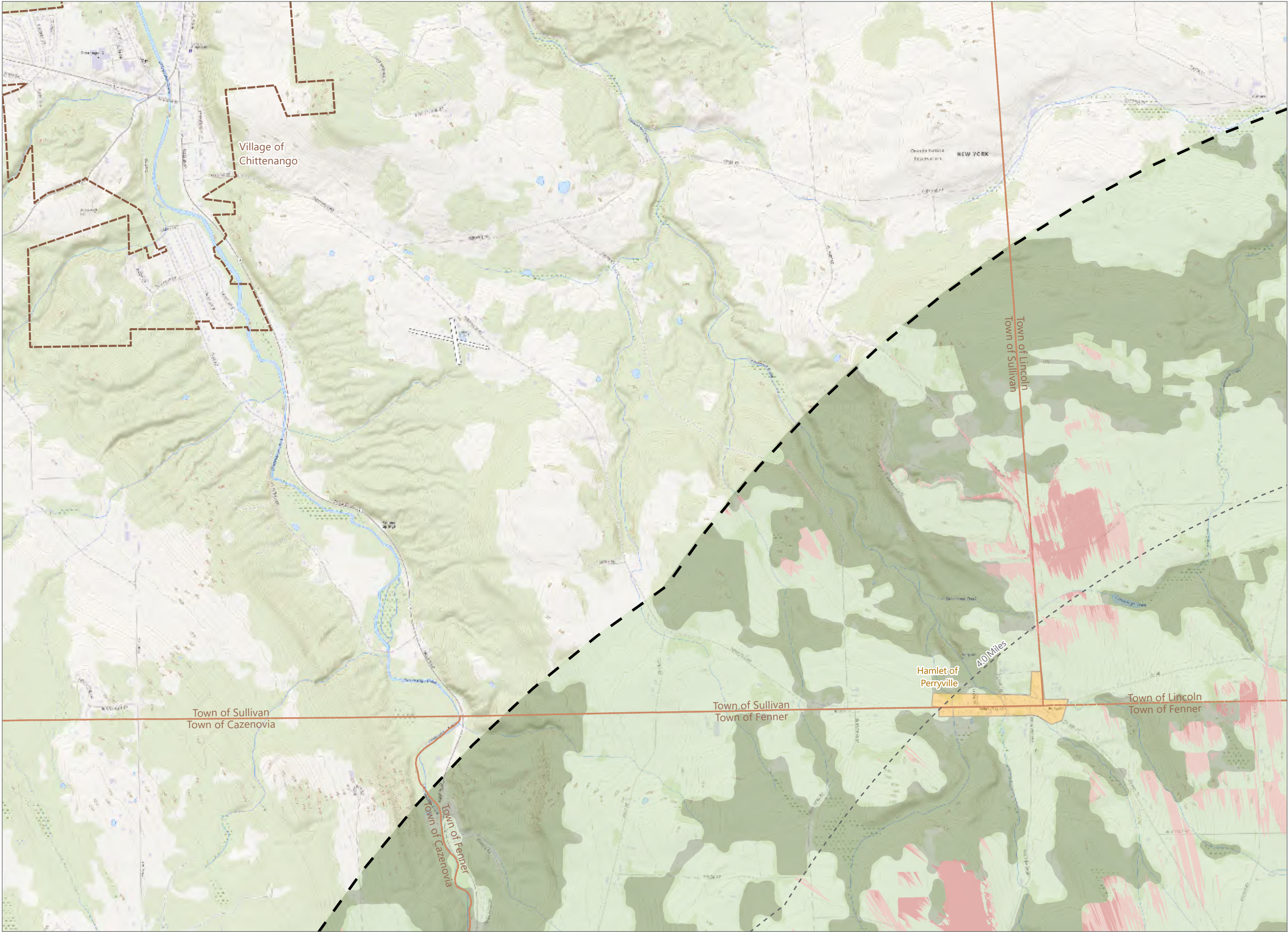


## **Attachment A**

Revised Composite Overlay Map

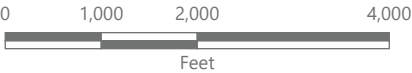
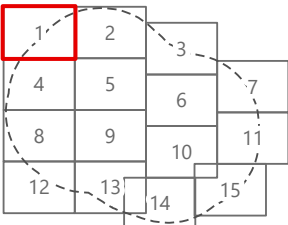


**Hoffman Falls Wind Project**  
Towns of Eaton, Fenner, Nelson,  
and Smithfield,  
Madison County, New York

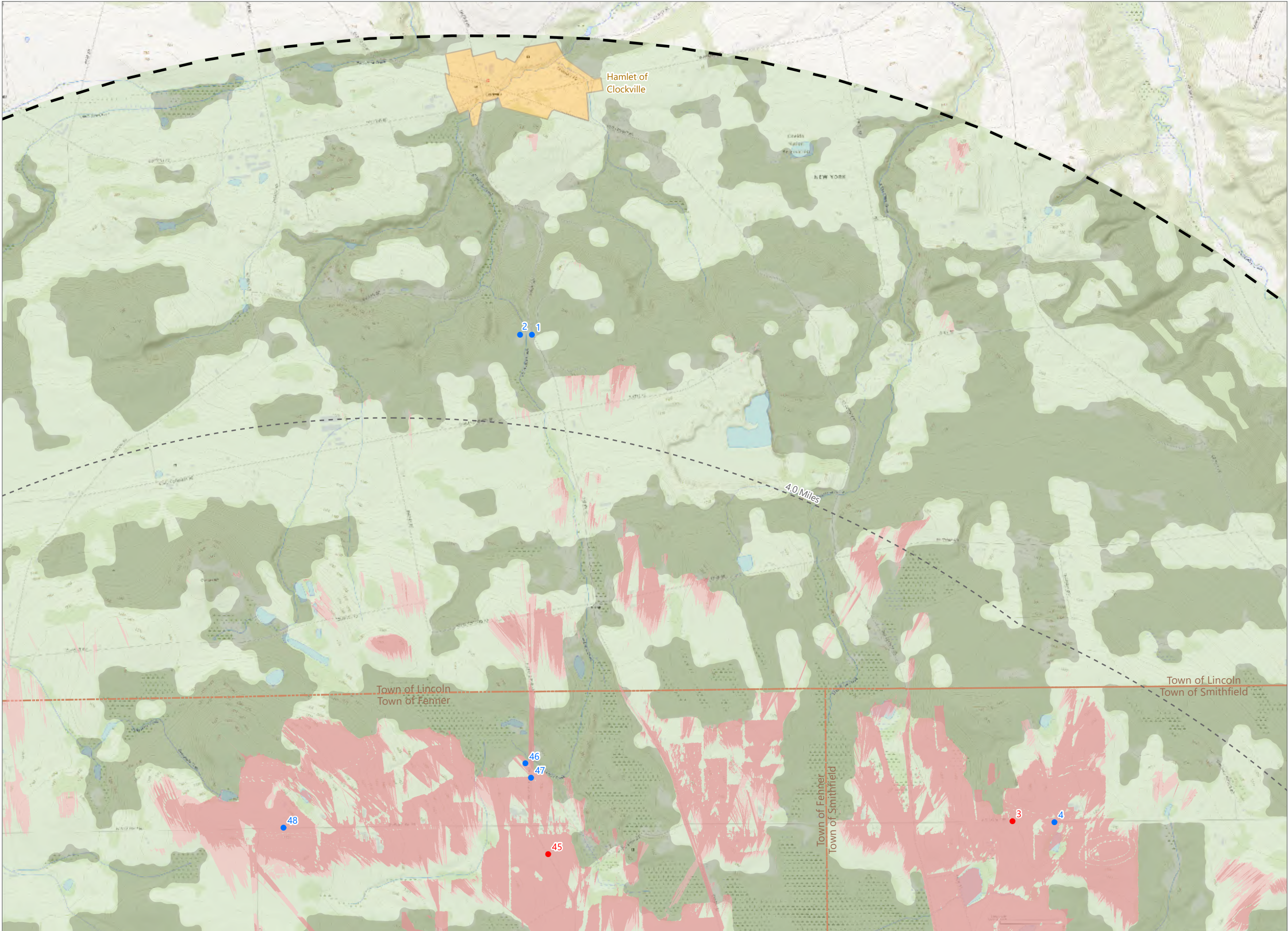
**Visual Impact Assessment**

- Potential Visibility of Blade Tips Only
- Potential Visibility of FAA Warning Light
- Facility Site
- Distance Zone Transition
- 5-Mile Study Area
- Landscape Similarity Zone
  - Agricultural/Rural Residential
  - Forest
  - Hamlet

Sheet 1 of 15



Scale: 1:24,000  
Prepared May 23, 2024  
Basemap: Esri "USGS Topo" map service

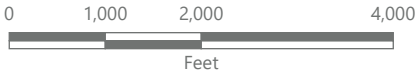
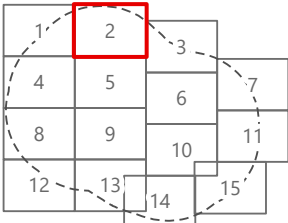


**Hoffman Falls Wind Project**  
Towns of Eaton, Fenner, Nelson,  
and Smithfield,  
Madison County, New York

**Visual Impact Assessment**

- Viewpoint Location
  - Simulation Viewpoint
  - Potential Visibility of Blade Tips Only
  - Potential Visibility of FAA Warning Light
  - Facility Site
  - Distance Zone Transition
  - 5-Mile Study Area
- Landscape Similarity Zone
- Agricultural/Rural Residential
  - Forest
  - Hamlet

Sheet 2 of 15



Scale: 1:24,000  
Prepared May 23, 2024  
Basemap: Esri "USGS Topo" map service

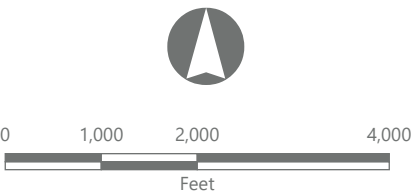
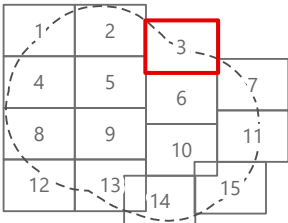
Hoffman Falls Wind Project

Towns of Eaton, Fenner, Nelson,  
and Smithfield,  
Madison County, New York

Visual Impact Assessment

- Potential Visibility of Blade Tips Only
- Potential Visibility of FAA Warning Light
- Facility Site
- Distance Zone Transition
- 5-Mile Study Area
- Landscape Similarity Zone
- Agricultural/Rural Residential
- Forest
- Hamlet
- Village

Sheet 3 of 15



Scale: 1:24,000  
Prepared May 23, 2024  
Basemap: Esri "USGS Topo" map service

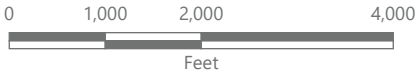
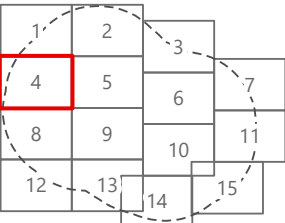
Hoffman Falls Wind Project

Towns of Eaton, Fenner, Nelson, and Smithfield,  
Madison County, New York

Visual Impact Assessment

- Viewpoint Location
- Simulation Viewpoint
- Potential Visibility of Blade Tips Only
- Potential Visibility of FAA Warning Light
- Facility Site
- Distance Zone Transition
- 5-Mile Study Area
- Landscape Similarity Zone
  - Agricultural/Rural Residential
  - Forest
  - Village
  - Water

Sheet 4 of 15



Scale: 1:24,000  
Prepared May 23, 2024  
Basemap: Esri "USGS Topo" map service

# Hoffman Falls Wind Project

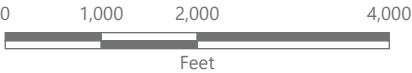
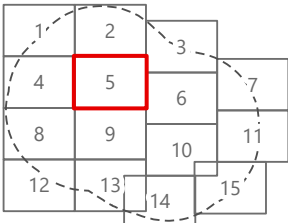
Towns of Eaton, Fenner, Nelson, and Smithfield,  
Madison County, New York

## Visual Impact Assessment

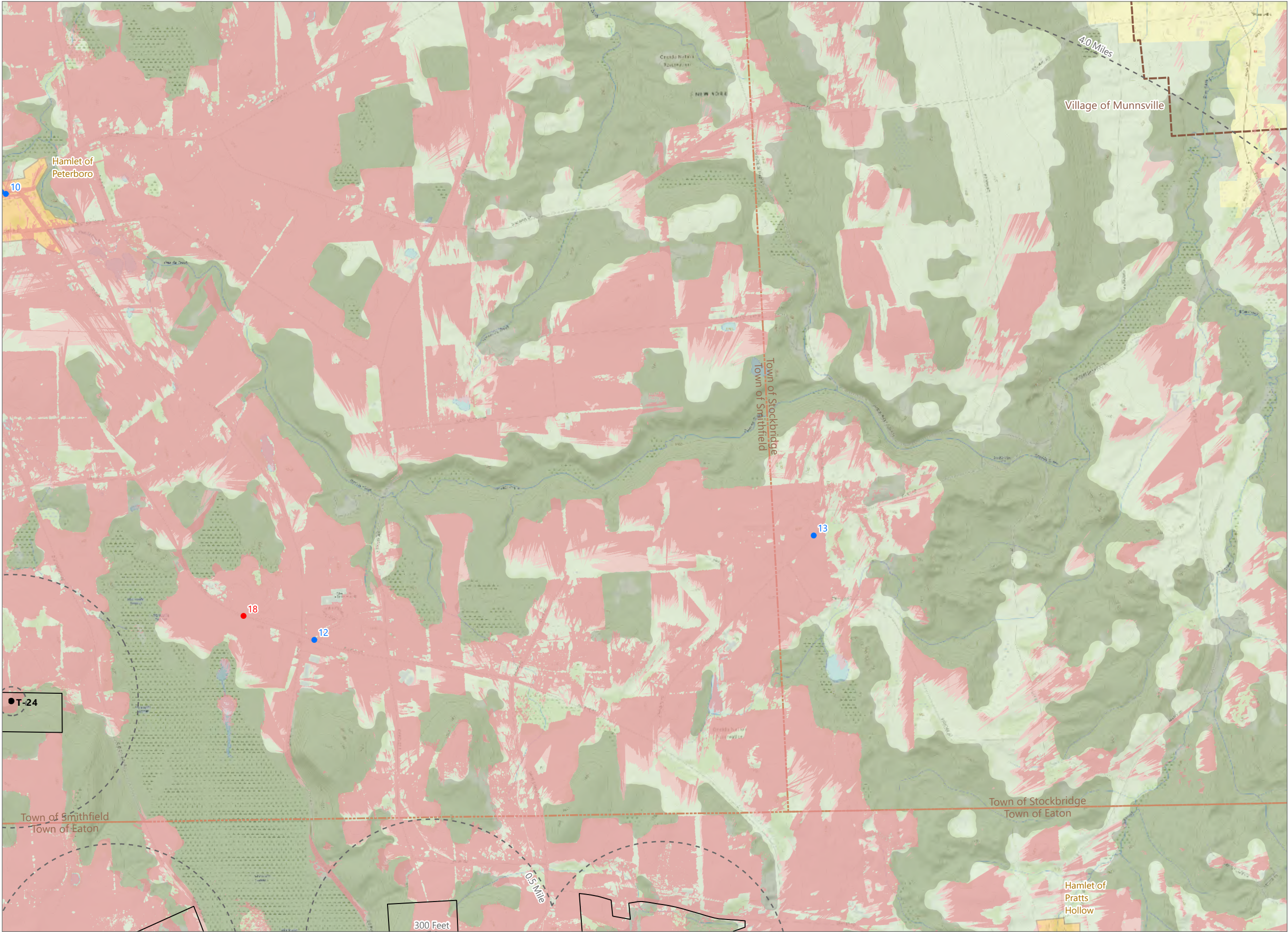
- Viewpoint Location
- Simulation Viewpoint
- Supplemental Viewpoint
- ADLS Tower
- Wind Turbine
- O&M Building
- POI Substation
- Collection Substation
- Potential Visibility of Blade Tips Only
- Potential Visibility of FAA Warning Light
- Facility Site
- Distance Zone Transition
- 5-Mile Study Area

- Landscape Similarity Zone
- Agricultural/Rural Residential
  - Forest
  - Hamlet

Sheet 5 of 15



Scale: 1:24,000  
Prepared May 23, 2024  
Basemap: Esri "USGS Topo" map service



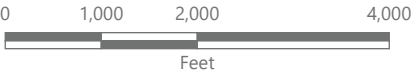
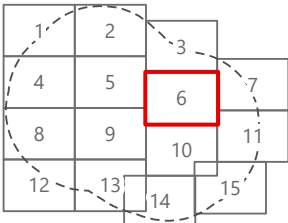
Hoffman Falls Wind Project

Towns of Eaton, Fenner, Nelson, and Smithfield,  
Madison County, New York

Visual Impact Assessment

- Viewpoint Location
- Simulation Viewpoint
- Wind Turbine
- Potential Visibility of Blade Tips Only
- Potential Visibility of FAA Warning Light
- Facility Site
- Distance Zone Transition
- 5-Mile Study Area
- Landscape Similarity Zone
  - Agricultural/Rural Residential
  - Forest
  - Hamlet
  - Village

Sheet 6 of 15



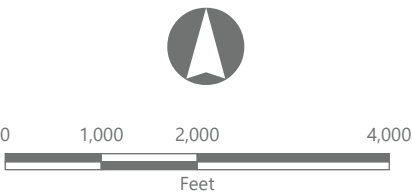
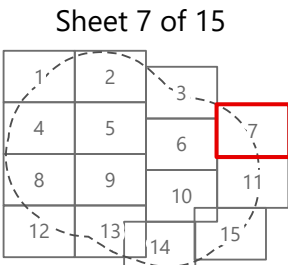
Scale: 1:24,000  
Prepared May 23, 2024  
Basemap: Esri "USGS Topo" map service

Hoffman Falls Wind Project

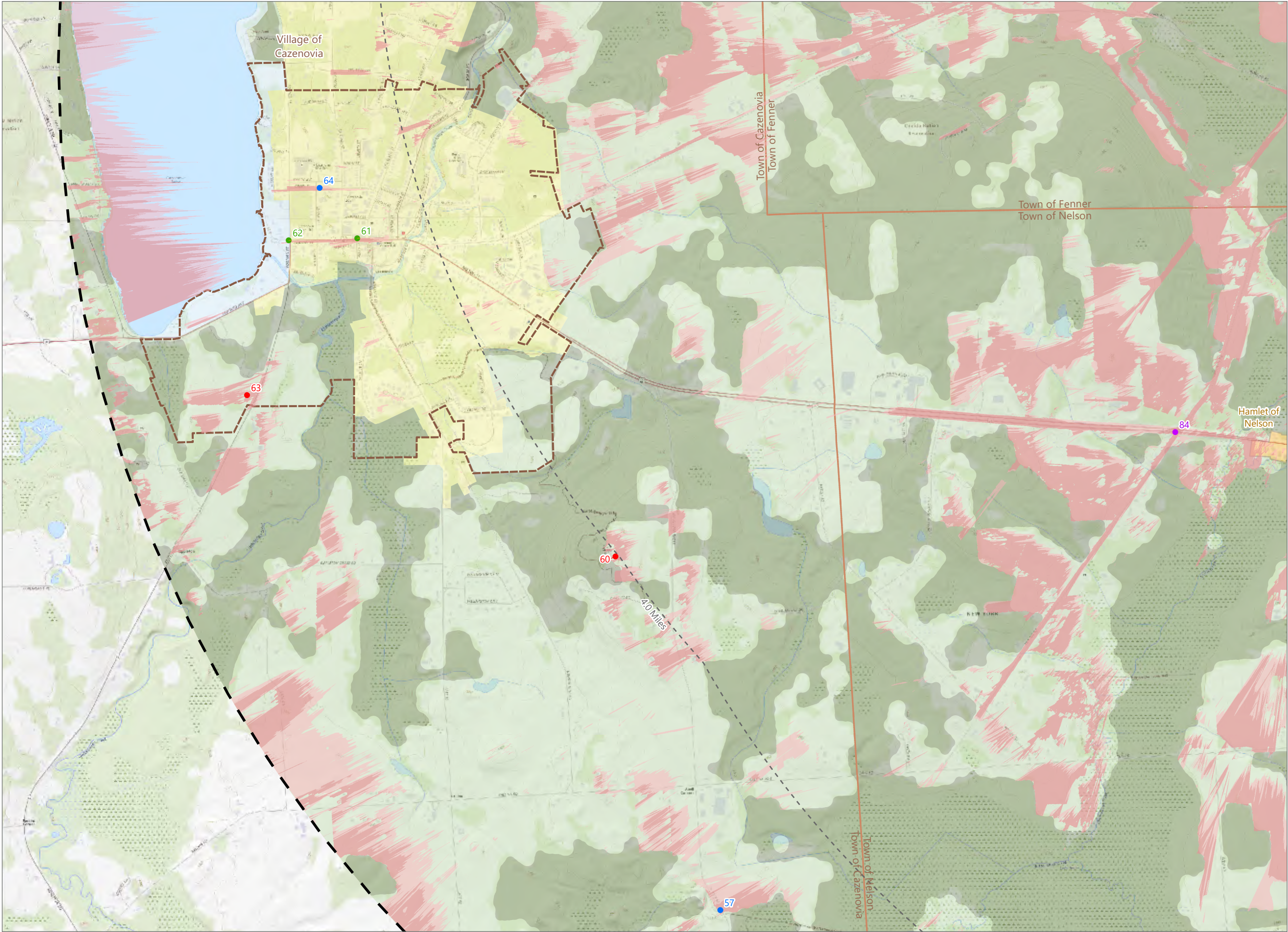
Towns of Eaton, Fenner, Nelson, and Smithfield,  
Madison County, New York

Visual Impact Assessment

- Viewpoint Location
  - Simulation Viewpoint
  - Potential Visibility of Blade Tips Only
  - Potential Visibility of FAA Warning Light
  - Facility Site
  - Distance Zone Transition
  - 5-Mile Study Area
- Landscape Similarity Zone
- Agricultural/Rural Residential
  - Forest
  - Village



Scale: 1:24,000  
Prepared May 23, 2024  
Basemap: Esri "USGS Topo" map service



Hoffman Falls Wind Project

Towns of Eaton, Fenner, Nelson, and Smithfield,  
Madison County, New York

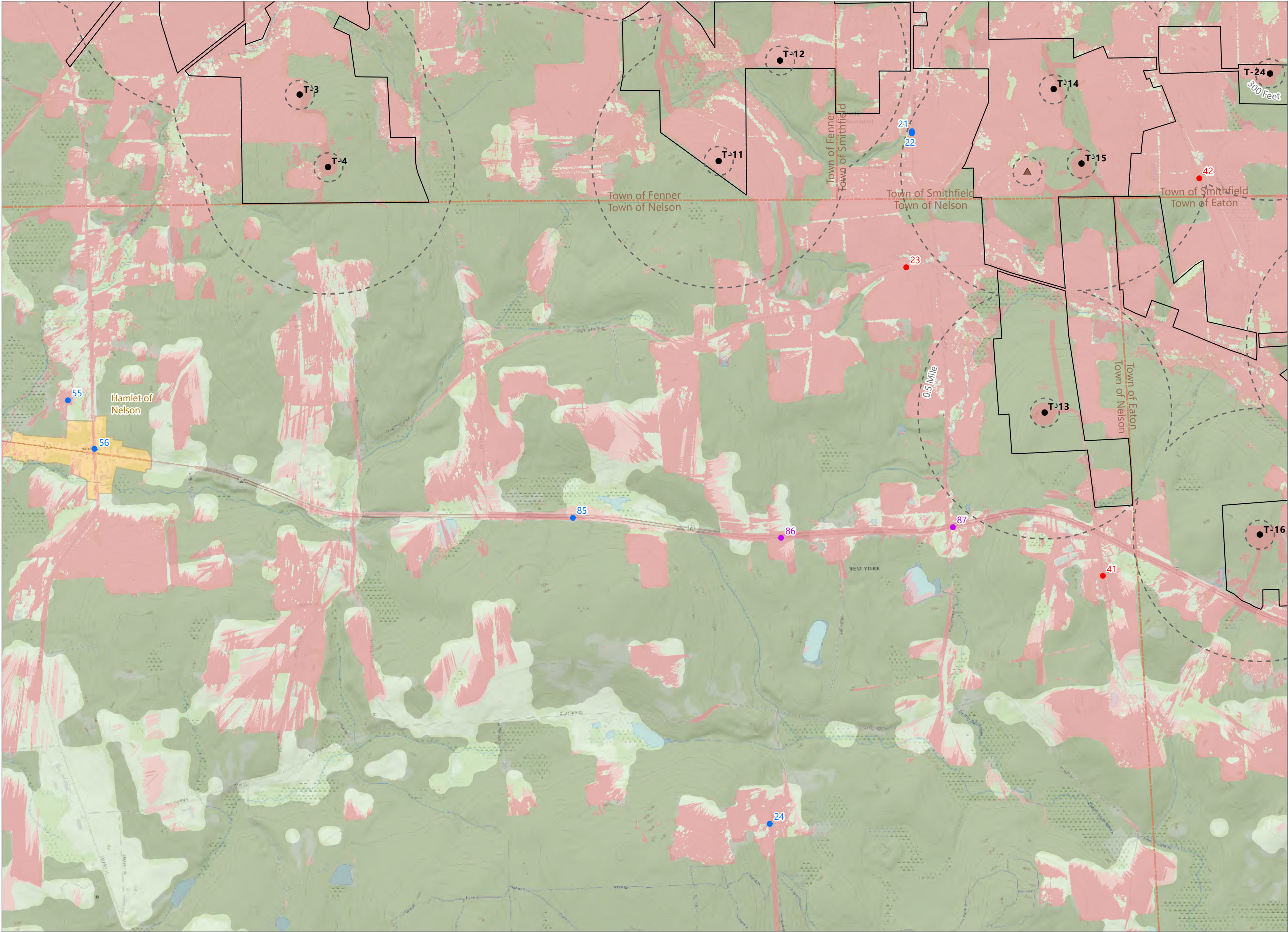
Visual Impact Assessment

- Viewpoint Location
  - Wireframe Viewpoint
  - Simulation Viewpoint
  - Supplemental Viewpoint
  - Potential Visibility of Blade Tips Only
  - Potential Visibility of FAA Warning Light
  - Facility Site
  - Distance Zone Transition
  - 5-Mile Study Area
- Landscape Similarity Zone
- Agricultural/Rural Residential
  - Forest
  - Hamlet
  - Village
  - Water

Sheet 8 of 15

1	2	3	
4	5	6	7
8	9	10	11
12	13	14	15

Scale: 1:24,000  
Prepared May 23, 2024  
Basemap: Esri "USGS Topo" map service



### Hoffman Falls Wind Project

Towns of Eaton, Fenner, Nelson, and Smithfield,  
Madison County, New York

**Visual Impact Assessment**

- Viewpoint Location
- Simulation Viewpoint
- Supplemental Viewpoint
- MET Tower
- Wind Turbine
- Potential Visibility of Blade Tips Only
- Potential Visibility of FAA Warning Light
- Facility Site
- Distance Zone Transition
- 5-Mile Study Area

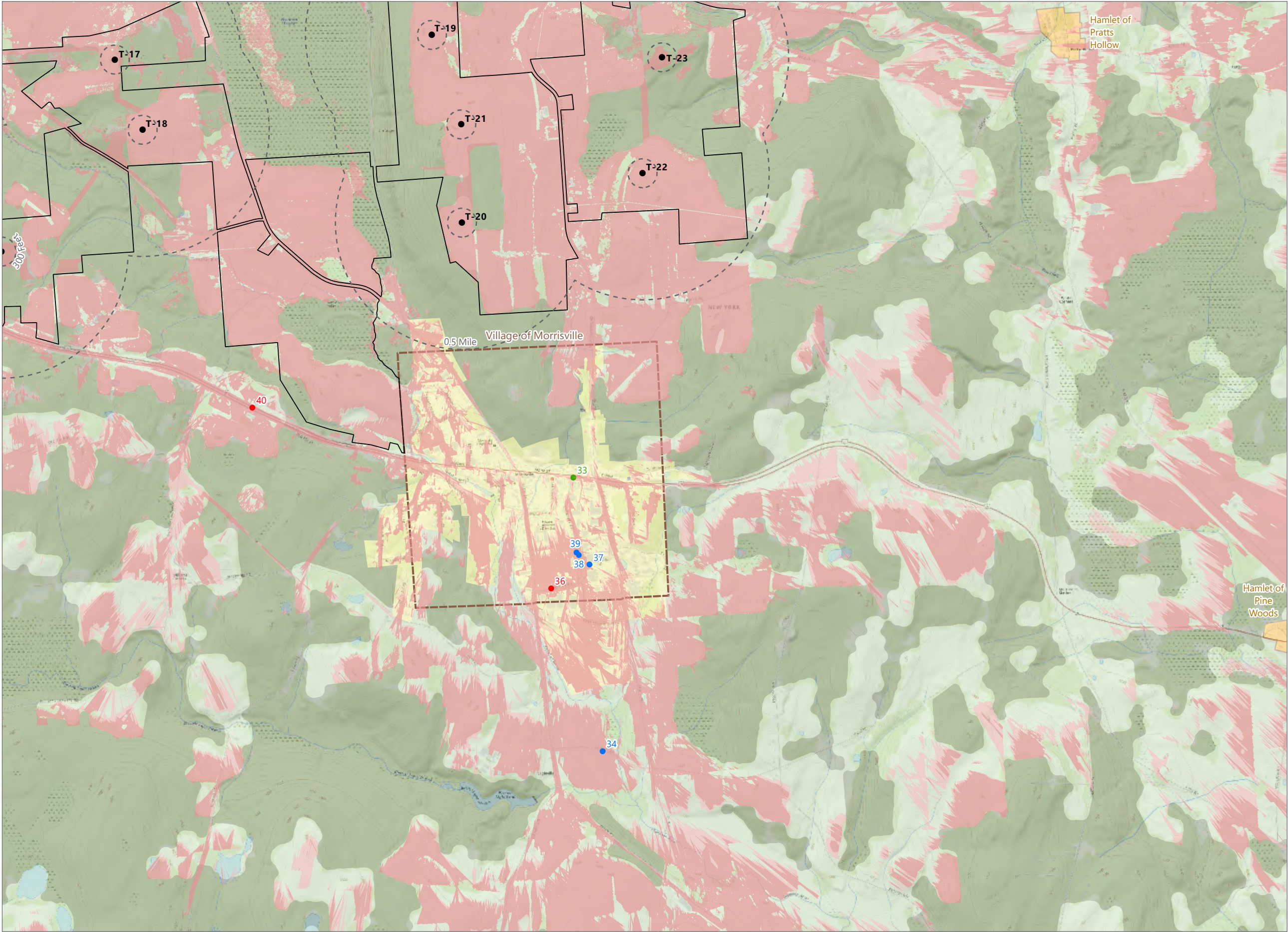
Landscape Similarity Zone

- Agricultural/Rural Residential
- Forest
- Hamlet

Sheet 9 of 15

0 1,000 2,000 4,000  
Feet

Scale: 1:24,000  
Prepared May 23, 2024  
Basemap: Esri "USGS Topo" map service



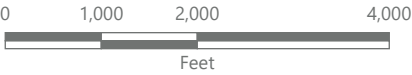
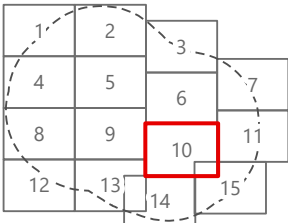
**Hoffman Falls Wind Project**

Towns of Eaton, Fenner, Nelson,  
and Smithfield,  
Madison County, New York

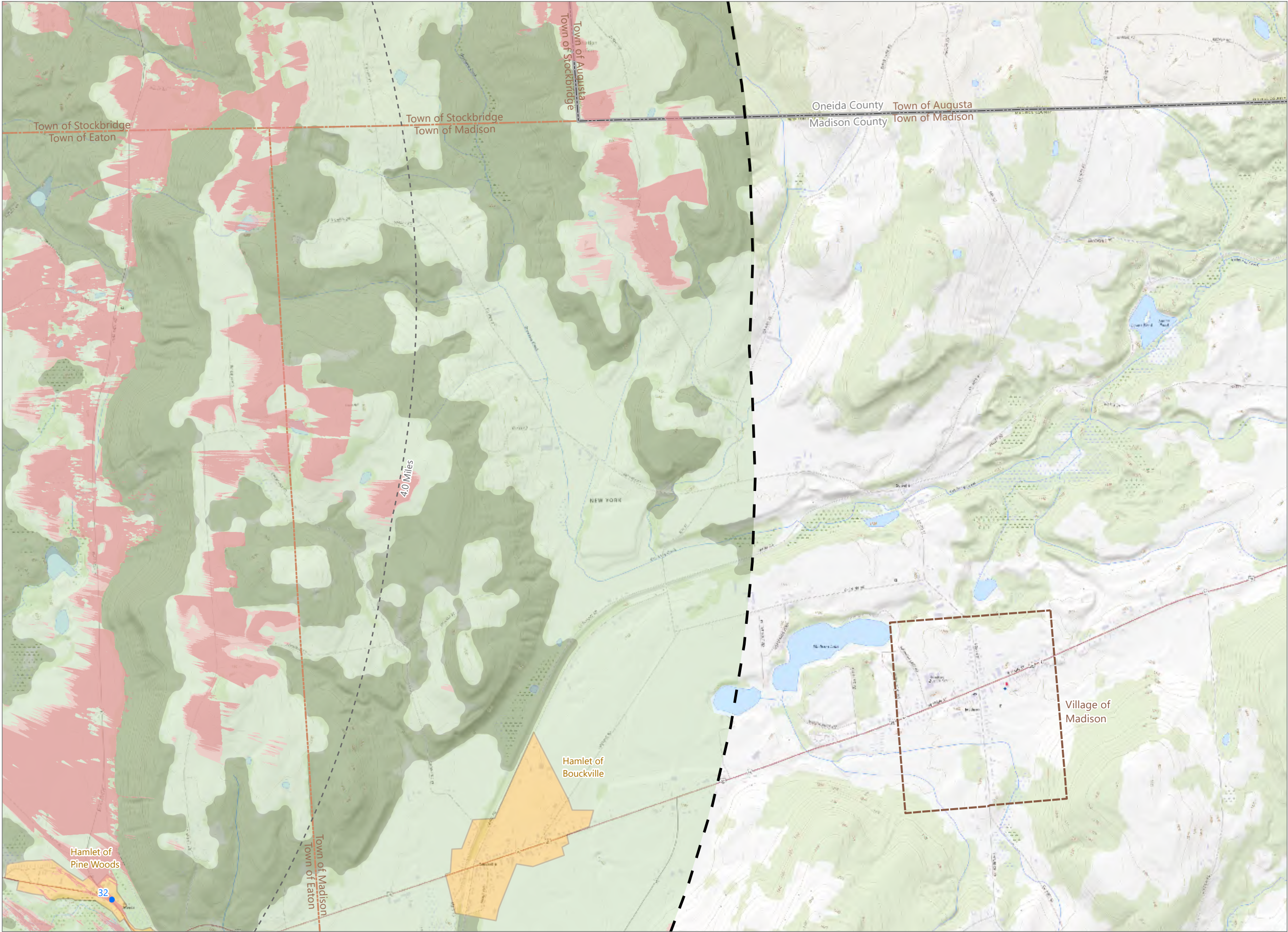
**Visual Impact Assessment**

- Viewpoint Location
- Wireframe Viewpoint
- Simulation Viewpoint
- Wind Turbine
- Potential Visibility of Blade Tips Only
- Potential Visibility of FAA Warning Light
- Facility Site
- Distance Zone Transition
- 5-Mile Study Area
- Landscape Similarity Zone
  - Agricultural/Rural Residential
  - Forest
  - Hamlet
  - Village

Sheet 10 of 15



Scale: 1:24,000  
Prepared May 23, 2024  
Basemap: Esri "USGS Topo" map service



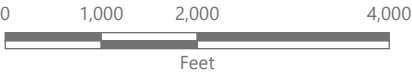
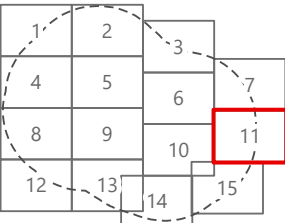
# Hoffman Falls Wind Project

Towns of Eaton, Fenner, Nelson, and Smithfield, Madison County, New York

## Visual Impact Assessment

- Viewpoint Location
- Potential Visibility of Blade Tips Only
- Potential Visibility of FAA Warning Light
- Facility Site
- Distance Zone Transition
- 5-Mile Study Area
- Landscape Similarity Zone
  - Agricultural/Rural Residential
  - Forest
  - Hamlet
  - Water

Sheet 11 of 15



Scale: 1:24,000  
Prepared May 23, 2024  
Basemap: Esri "USGS Topo" map service