

Hoffman Falls Wind

Towns of Eaton, Fenner, Nelson and
Smithfield, Madison County,
New York

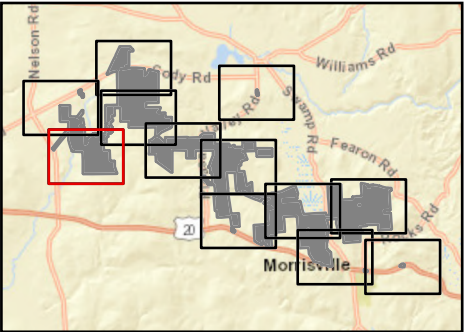
Section 94-c Second Supplement
Matter No. 23-00038

Ecological Cover Type

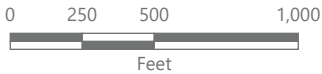
- Developed/Disturbed
- Cropland/Field Crops
- Cropland/Row Crops
- Pastureland
- Stream
- Wetland
- Beech-Maple Mesic Forest
- Spruce/Fir Plantation
- Successional Northern Hardwoods
- Successional Old Field
- Successional Shrubland
- Successional Spruce/Fir Plantation

Facility Components

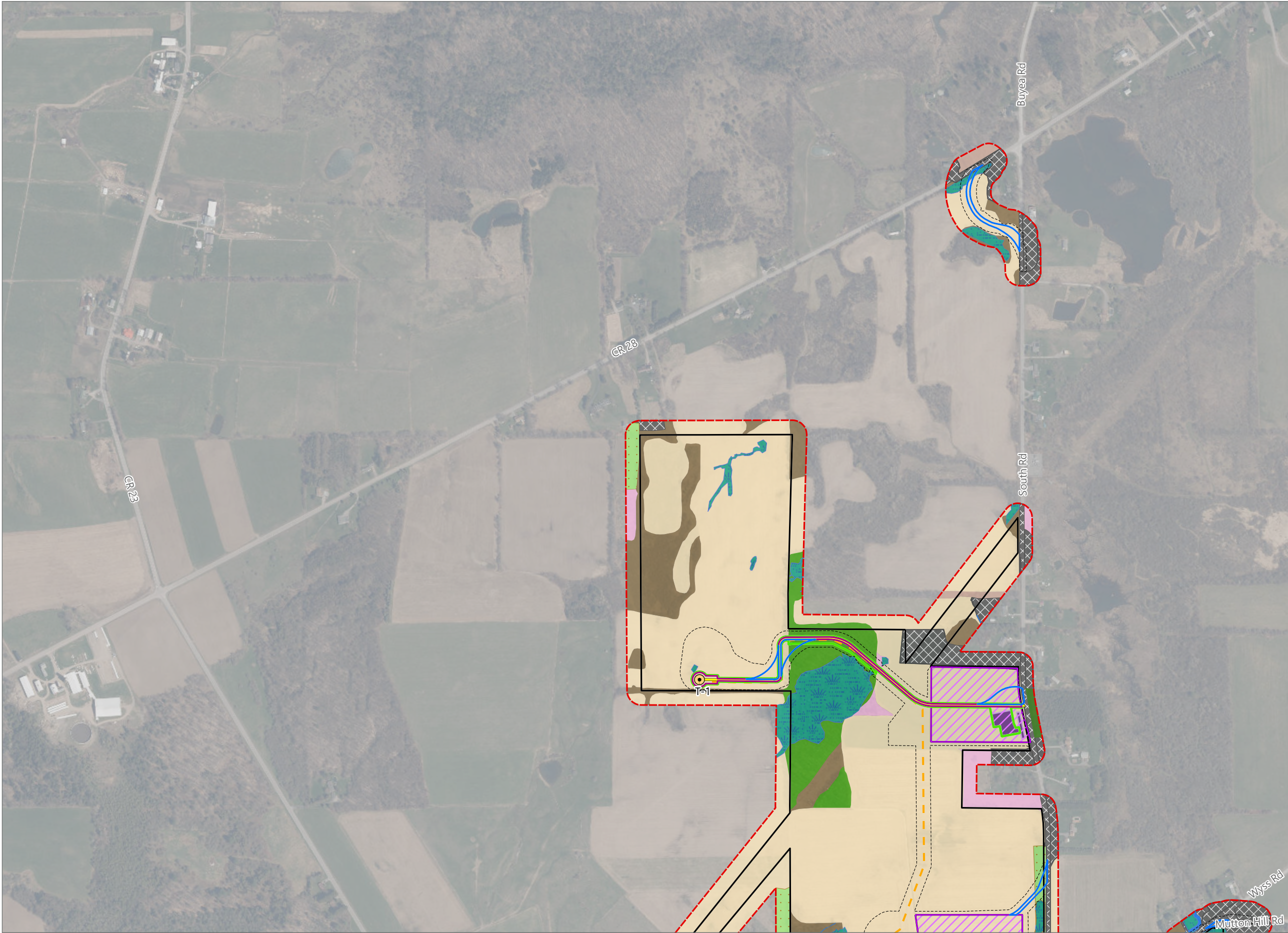
- Wind Turbine
- ADLS Tower
- Permanent MET Tower
- Access Road
- Collection Line
- POI Substation
- O&M Building
- Laydown Yard
- Limit of Impervious Surface
- Limit of Vegetation Management
- Limit of Disturbance
- Temporary Turning Improvement
- Plant Community Study Area
- Facility Site



Sheet 1 of 12



Prepared September 11, 2024
Basemap: NYSDOP "2022" orthoimagery map service



Hoffman Falls Wind

Towns of Eaton, Fenner, Nelson and
Smithfield, Madison County,
New York

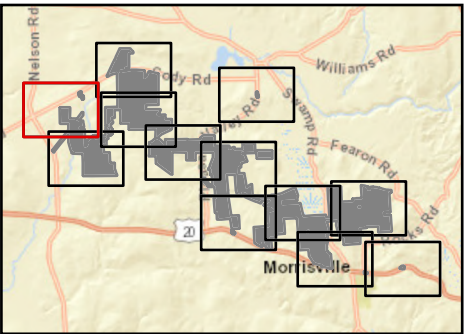
Section 94-c Second Supplement
Matter No. 23-00038

Ecological Cover Type

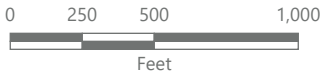
- Developed/Disturbed
- Cropland/Row Crops
- Pastureland
- Stream
- Wetland
- Hemlock-Northern Hardwood Forest
- Beech-Maple Mesic Forest
- Spruce/Fir Plantation
- Successional Northern Hardwoods
- Successional Old Field
- Successional Shrubland

Facility Components

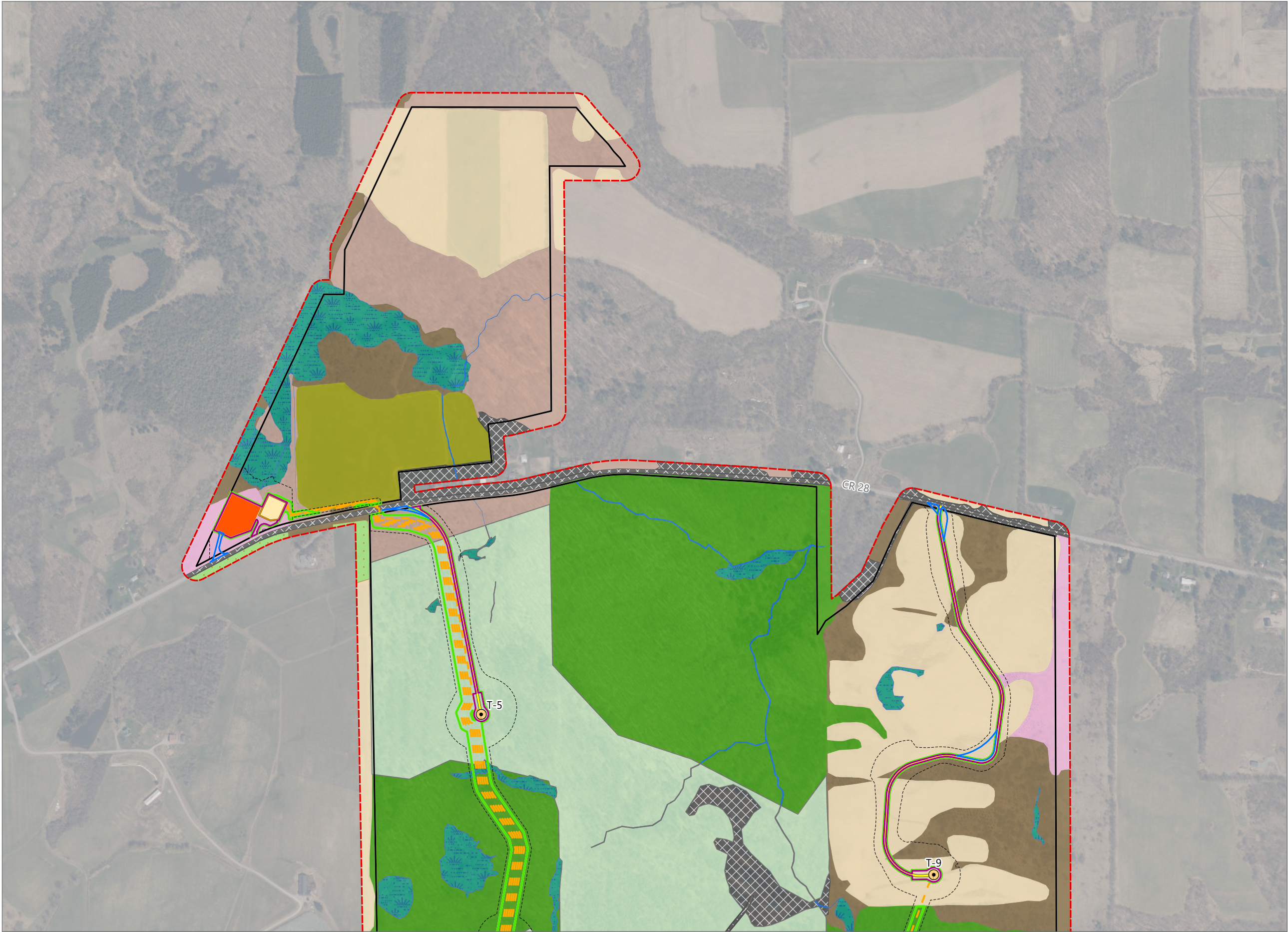
- Wind Turbine
- ADLS Tower
- Permanent MET Tower
- Access Road
- Collection Line
- POI Substation
- O&M Building
- Laydown Yard
- Limit of Impervious Surface
- Limit of Vegetation Management
- Limit of Disturbance
- Temporary Turning Improvement
- Plant Community Study Area
- Facility Site



Sheet 2 of 12



Prepared September 11, 2024
Basemap: NYSDOP "2022" orthoimagery map service



Hoffman Falls Wind

Towns of Eaton, Fenner, Nelson and
Smithfield, Madison County,
New York

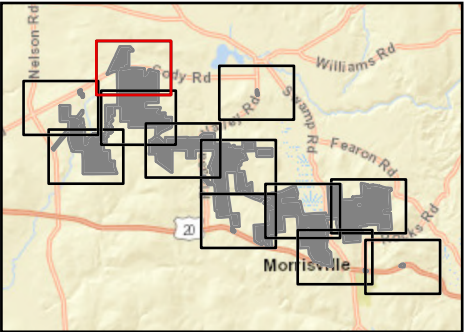
**Section 94-c Second Supplement
Matter No. 23-00038**

Ecological Cover Type

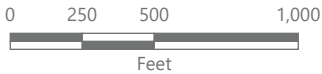
- Developed/Disturbed
- Cropland/Field Crops
- Cropland/Row Crops
- Pastureland
- Stream
- Wetland
- Beech-Maple Mesic Forest
- Successional Northern Hardwoods
- Successional Old Field
- Successional Shrubland
- Successional Spruce/Fir Plantation

Facility Components

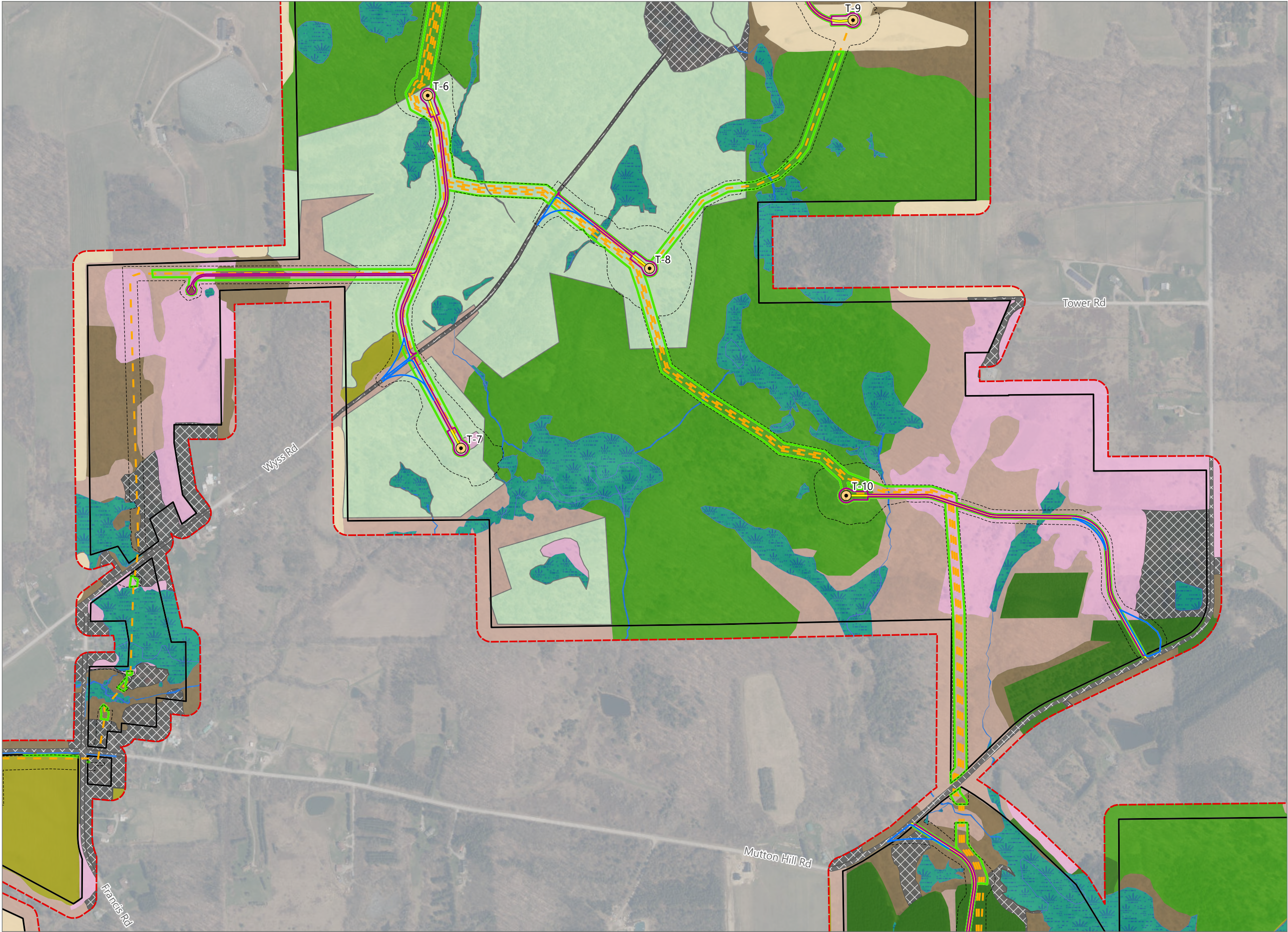
- Wind Turbine
- ADLS Tower
- Permanent MET Tower
- Access Road
- Collection Line
- Collection Substation
- POI Substation
- O&M Building
- Laydown Yard
- Limit of Impervious Surface
- Limit of Vegetation Management
- Limit of Disturbance
- Temporary Turning Improvement
- Plant Community Study Area
- Facility Site



Sheet 3 of 12



Prepared September 11, 2024
Basemap: NYSDOP "2022" orthoimagery map service



Hoffman Falls Wind

Towns of Eaton, Fenner, Nelson and
Smithfield, Madison County,
New York

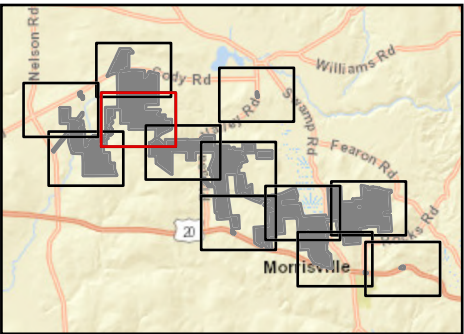
**Section 94-c Second Supplement
Matter No. 23-00038**

Ecological Cover Type

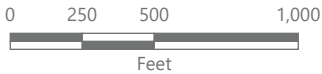
- Developed/Disturbed
- Cropland/Field Crops
- Cropland/Row Crops
- Stream
- Wetland
- Beech-Maple Mesic Forest
- Spruce/Fir Plantation
- Successional Northern Hardwoods
- Successional Old Field
- Successional Shrubland
- Successional Spruce/Fir Plantation

Facility Components

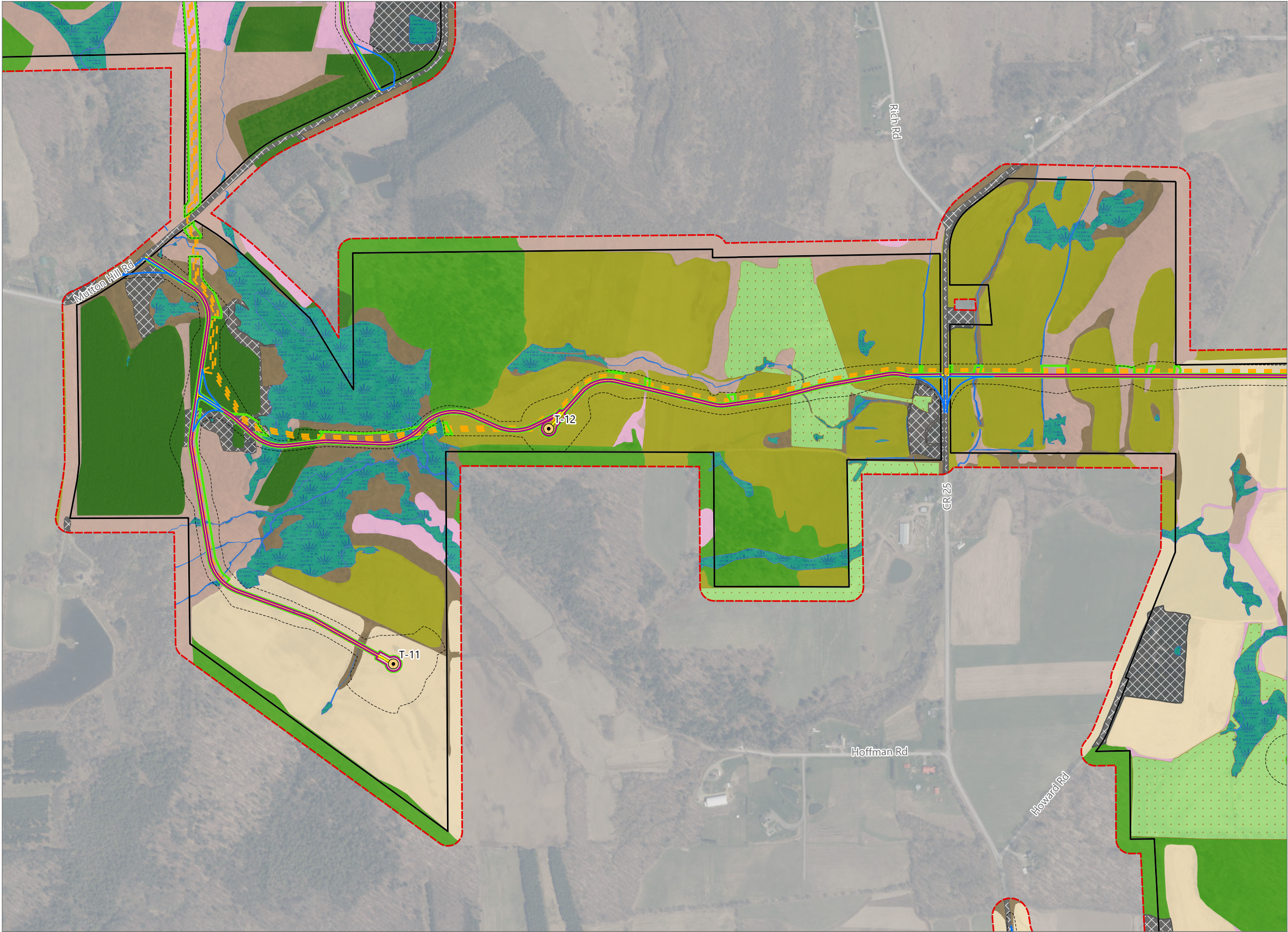
- Wind Turbine
- ADLS Tower
- Permanent MET Tower
- Access Road
- Collection Line
- POI Substation
- O&M Building
- Laydown Yard
- Limit of Impervious Surface
- Limit of Vegetation Management
- Limit of Disturbance
- Temporary Turning Improvement
- Plant Community Study Area
- Facility Site



Sheet 4 of 12



Prepared September 11, 2024
Basemap: NYSDOP "2022" orthoimagery map service



Hoffman Falls Wind

Towns of Eaton, Fenner, Nelson and
Smithfield, Madison County,
New York

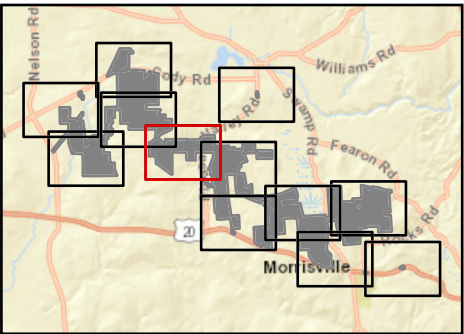
**Section 94-c Second Supplement
Matter No. 23-00038**

Ecological Cover Type

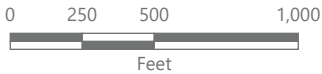
- Developed/Disturbed
- Cropland/Field Crops
- Cropland/Row Crops
- Pastureland
- Stream
- Wetland
- Beech-Maple Mesic Forest
- Spruce/Fir Plantation
- Successional Northern Hardwoods
- Successional Old Field
- Successional Shrubland

Facility Components

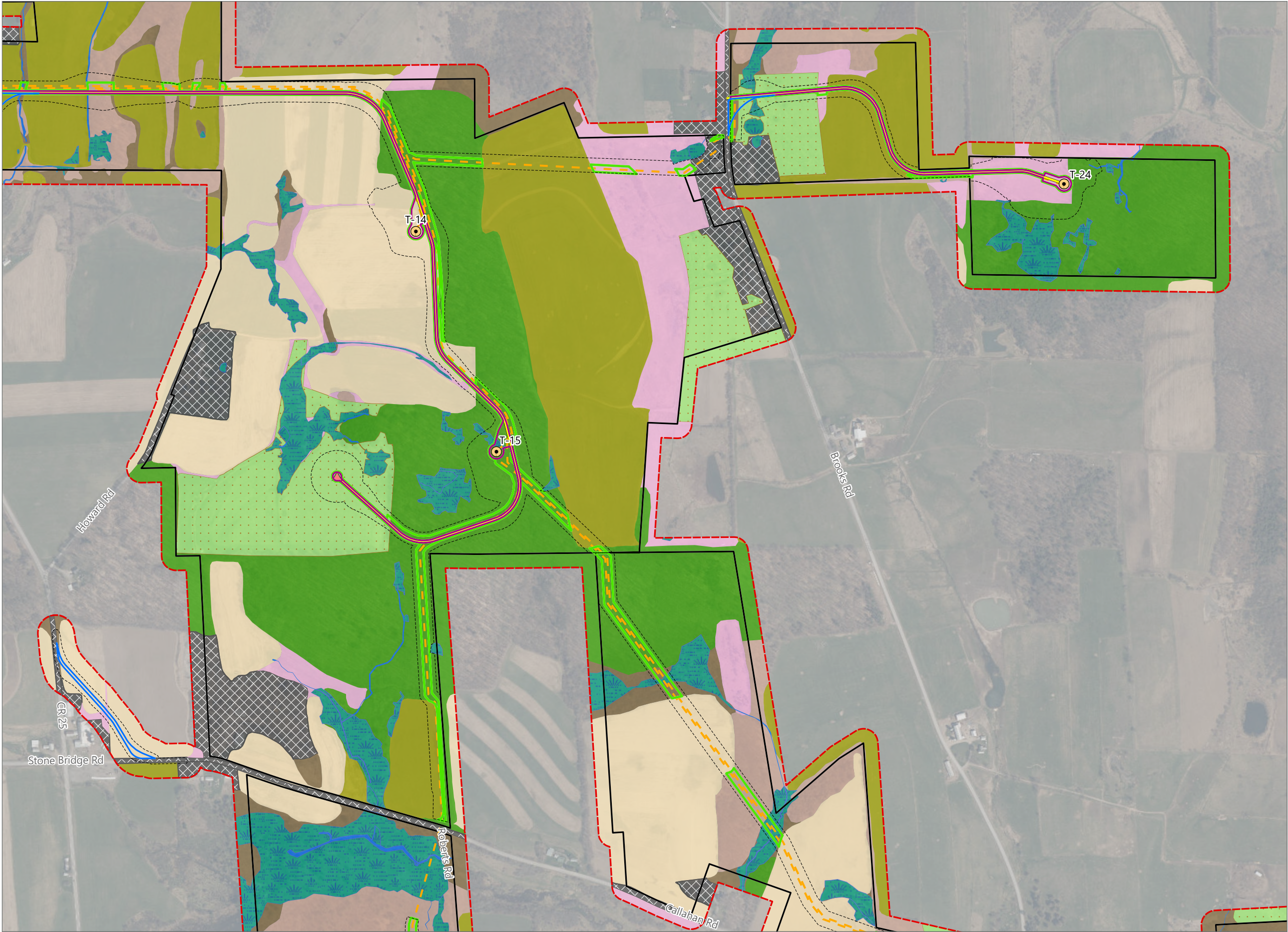
- Wind Turbine
- ADLS Tower
- Permanent MET Tower
- Access Road
- Collection Line
- POI Substation
- O&M Building
- Laydown Yard
- Limit of Impervious Surface
- Limit of Vegetation Management
- Limit of Disturbance
- Temporary Turning Improvement
- Plant Community Study Area
- Facility Site



Sheet 5 of 12



Prepared September 11, 2024
Basemap: NYSODP "2022" orthoimagery map service



Hoffman Falls Wind

Towns of Eaton, Fenner, Nelson and
Smithfield, Madison County,
New York

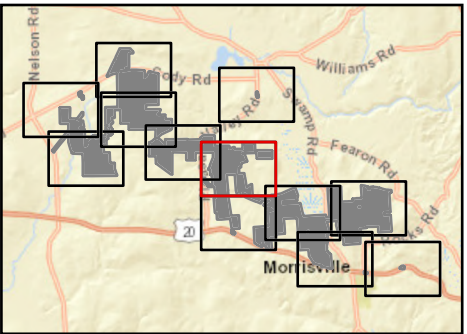
Section 94-c Second Supplement
Matter No. 23-00038

Ecological Cover Type

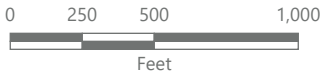
- Developed/Disturbed
- Cropland/Field Crops
- Cropland/Row Crops
- Pastureland
- Stream
- Wetland
- Beech-Maple Mesic Forest
- Successional Northern Hardwoods
- Successional Old Field
- Successional Shrubland

Facility Components

- Wind Turbine
- ADLS Tower
- Permanent MET Tower
- Access Road
- Collection Line
- POI Substation
- O&M Building
- Laydown Yard
- Limit of Impervious Surface
- Limit of Vegetation Management
- Limit of Disturbance
- Temporary Turning Improvement
- Plant Community Study Area
- Facility Site



Sheet 7 of 12



Prepared September 11, 2024
Basemap: NYSODP "2022" orthoimagery map service



Hoffman Falls Wind

Towns of Eaton, Fenner, Nelson and
Smithfield, Madison County,
New York

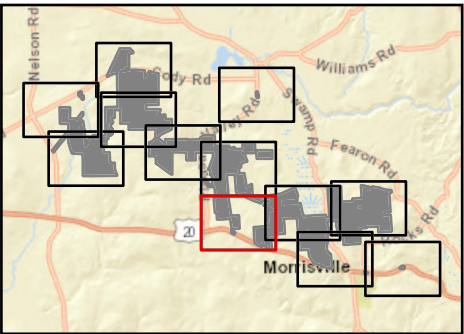
**Section 94-c Second Supplement
Matter No. 23-00038**

Ecological Cover Type

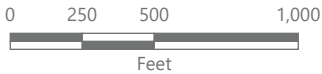
- Developed/Disturbed
- Cropland/Field Crops
- Cropland/Row Crops
- Pastureland
- Stream
- Wetland
- Beech-Maple Mesic Forest
- Spruce/Fir Plantation
- Successional Northern Hardwoods
- Successional Old Field
- Successional Shrubland

Facility Components

- Wind Turbine
- ADLS Tower
- Permanent MET Tower
- Access Road
- Collection Line
- POI Substation
- O&M Building
- Laydown Yard
- Limit of Impervious Surface
- Limit of Vegetation Management
- Limit of Disturbance
- Temporary Turning Improvement
- Plant Community Study Area
- Facility Site



Sheet 8 of 12



Prepared September 11, 2024
Basemap: NYSDOP "2022" orthoimagery map service



Hoffman Falls Wind

Towns of Eaton, Fenner, Nelson and
Smithfield, Madison County,
New York

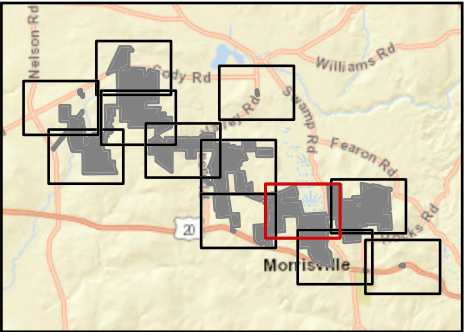
**Section 94-c Second Supplement
Matter No. 23-00038**

Ecological Cover Type

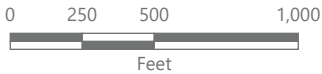
- Developed/Disturbed
- Cropland/Field Crops
- Cropland/Row Crops
- Pastureland
- Stream
- Wetland
- Beech-Maple Mesic Forest
- Spruce/Fir Plantation
- Successional Northern Hardwoods
- Successional Old Field
- Successional Shrubland

Facility Components

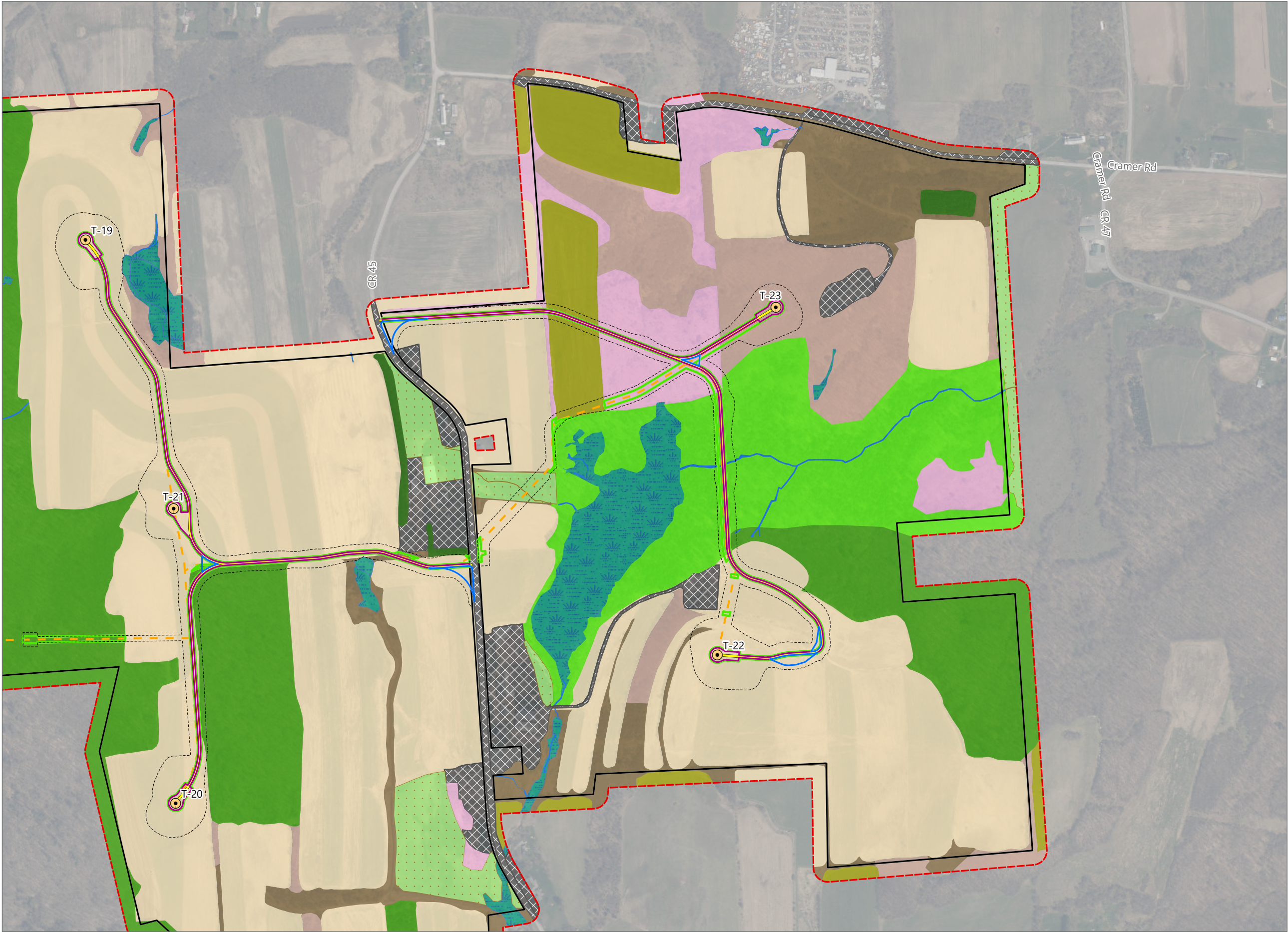
- Wind Turbine
- ADLS Tower
- Permanent MET Tower
- Access Road
- Collection Line
- POI Substation
- O&M Building
- Laydown Yard
- Limit of Impervious Surface
- Limit of Vegetation Management
- Limit of Disturbance
- Temporary Turning Improvement
- Plant Community Study Area
- Facility Site



Sheet 9 of 12



Prepared September 11, 2024
Basemap: NYSDOP "2022" orthoimagery map service



Hoffman Falls Wind

Towns of Eaton, Fenner, Nelson and
Smithfield, Madison County,
New York

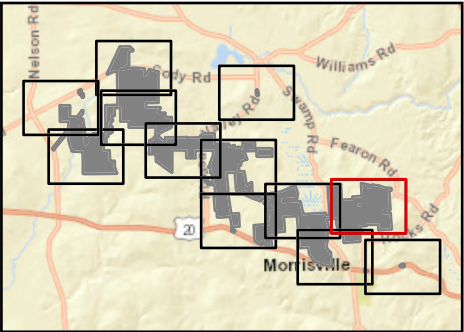
Section 94-c Second Supplement
Matter No. 23-00038

Ecological Cover Type

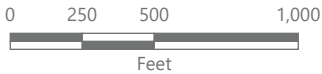
- Developed/Disturbed
- Cropland/Field Crops
- Cropland/Row Crops
- Pastureland
- Stream
- Wetland
- Hemlock-Northern Hardwood Forest
- Beech-Maple Mesic Forest
- Spruce/Fir Plantation
- Successional Northern Hardwoods
- Successional Old Field
- Successional Shrubland

Facility Components

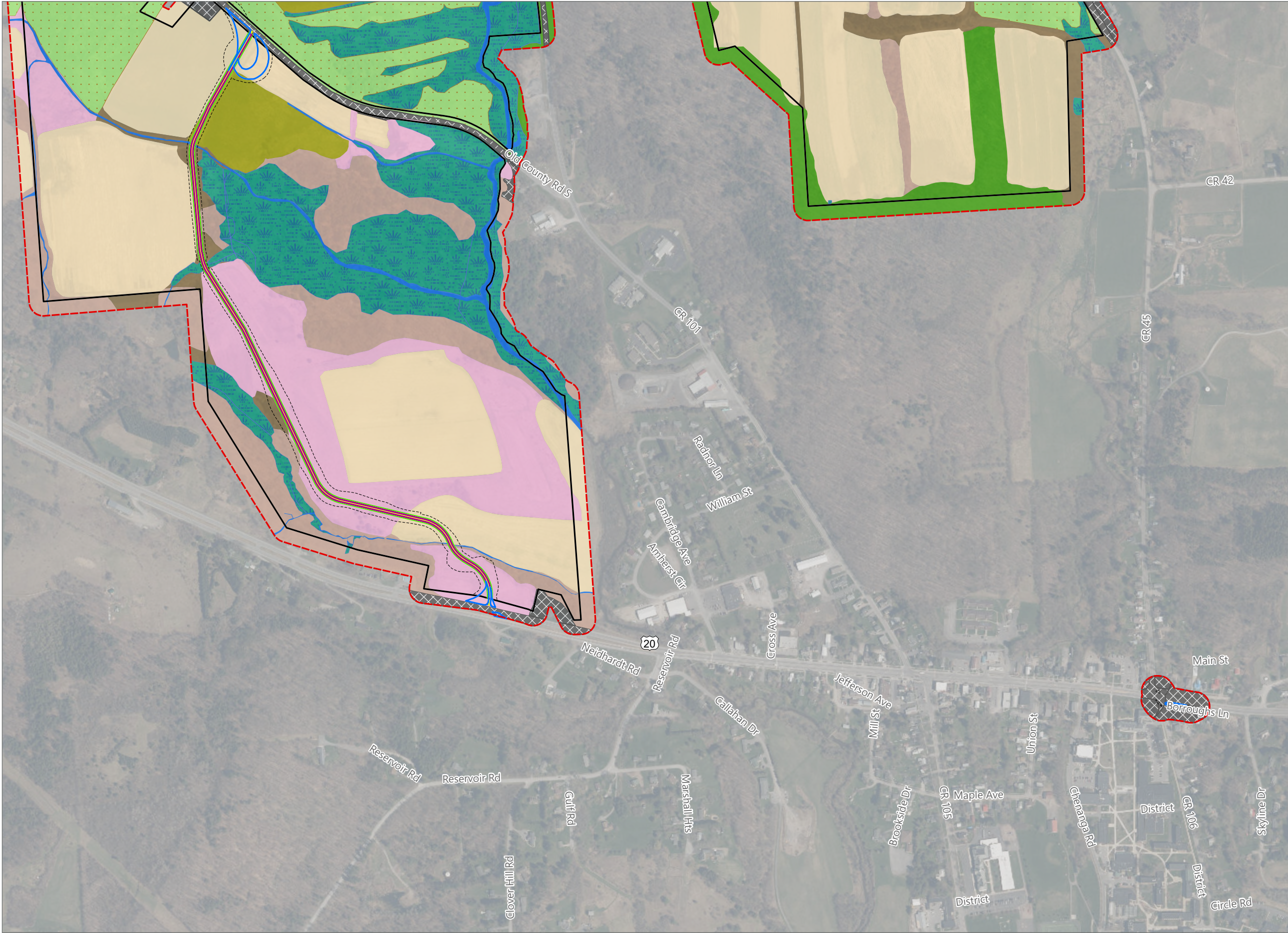
- Wind Turbine
- ADLS Tower
- Permanent MET Tower
- Access Road
- Collection Line
- POI Substation
- O&M Building
- Laydown Yard
- Limit of Impervious Surface
- Limit of Vegetation Management
- Limit of Disturbance
- Temporary Turning Improvement
- Plant Community Study Area
- Facility Site



Sheet 10 of 12



Prepared September 11, 2024
Basemap: NYSDOP "2022" orthoimagery map service



Hoffman Falls Wind

Towns of Eaton, Fenner, Nelson and
Smithfield, Madison County,
New York

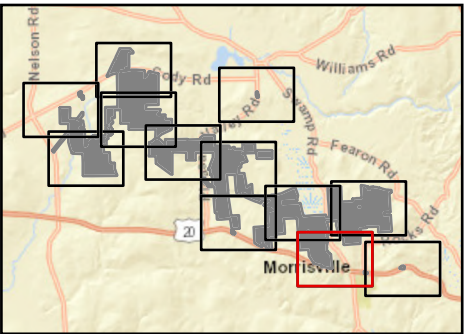
Section 94-c Second Supplement
Matter No. 23-00038

Ecological Cover Type

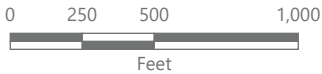
- Developed/Disturbed
- Cropland/Field Crops
- Cropland/Row Crops
- Pastureland
- Stream
- Wetland
- Beech-Maple Mesic Forest
- Successional Northern Hardwoods
- Successional Old Field
- Successional Shrubland

Facility Components

- Wind Turbine
- ADLS Tower
- Permanent MET Tower
- Access Road
- Collection Line
- POI Substation
- O&M Building
- Laydown Yard
- Limit of Impervious Surface
- Limit of Vegetation Management
- Limit of Disturbance
- Temporary Turning Improvement
- Plant Community Study Area
- Facility Site



Sheet 11 of 12



Prepared September 11, 2024
Basemap: NYSDOP "2022" orthoimagery map service



Hoffman Falls Wind

Towns of Eaton, Fenner, Nelson and
Smithfield, Madison County,
New York

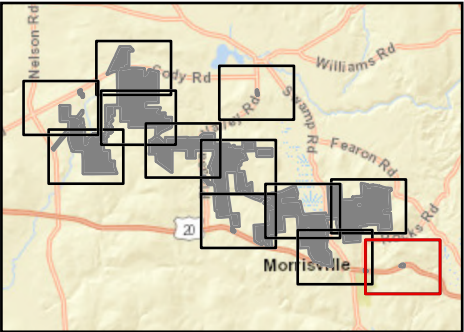
Section 94-c Second Supplement
Matter No. 23-00038

Ecological Cover Type

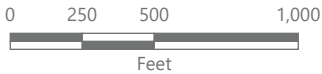
- Developed/Disturbed
- Cropland/Row Crops
- Successional Shrubland

Facility Components

- Wind Turbine
- ADLS Tower
- Permanent MET Tower
- Access Road
- Collection Line
- POI Substation
- O&M Building
- Laydown Yard
- Limit of Disturbance
- Temporary Turning Improvement
- Plant Community Study Area



Sheet 12 of 12



Prepared September 11, 2024
Basemap: NYSDOP "2022" orthoimagery map service