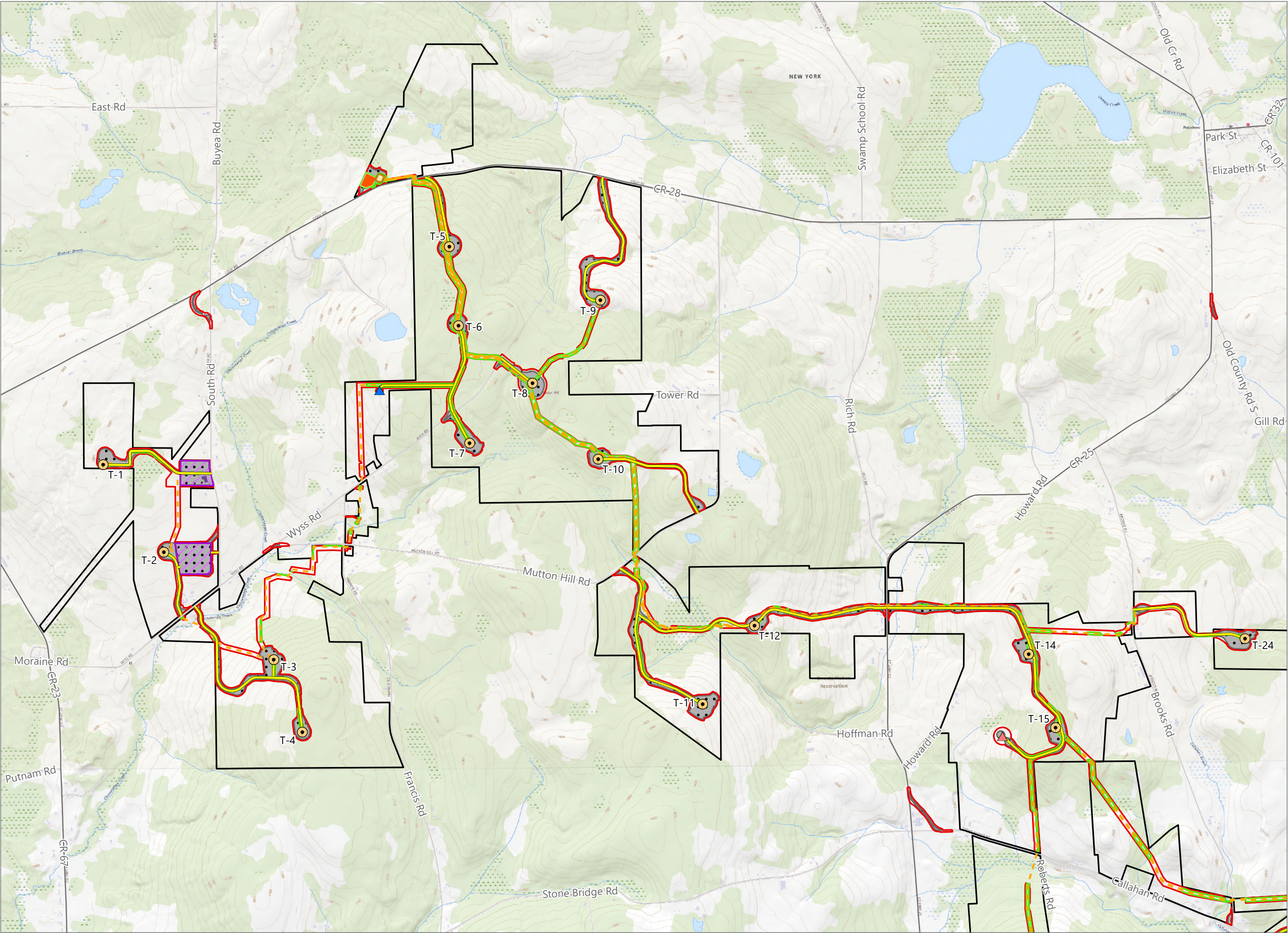


Figure 3-1. Topographic Map - Revision 1

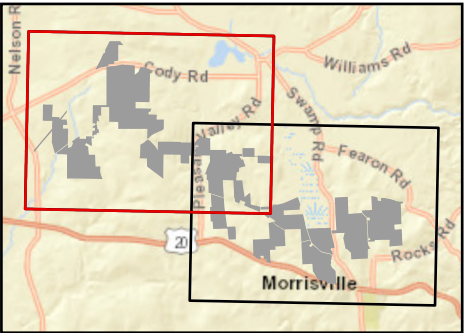


**Hoffman Falls Wind**

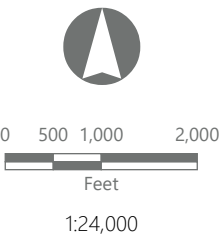
Towns of Eaton, Fenner, Nelson and  
Smithfield, Madison County,  
New York

**Section 94-c Second Supplement  
Matter No. 23-0038**

- Wind Turbine
- ADLS Tower
- Permanent MET Tower
- Access Road
- Collection Line
- Collection Substation
- POI Substation
- O&M Building
- Laydown Yard
- Limit of Vegetation Management
- Limit of Grading
- Limit of Disturbance
- Facility Site



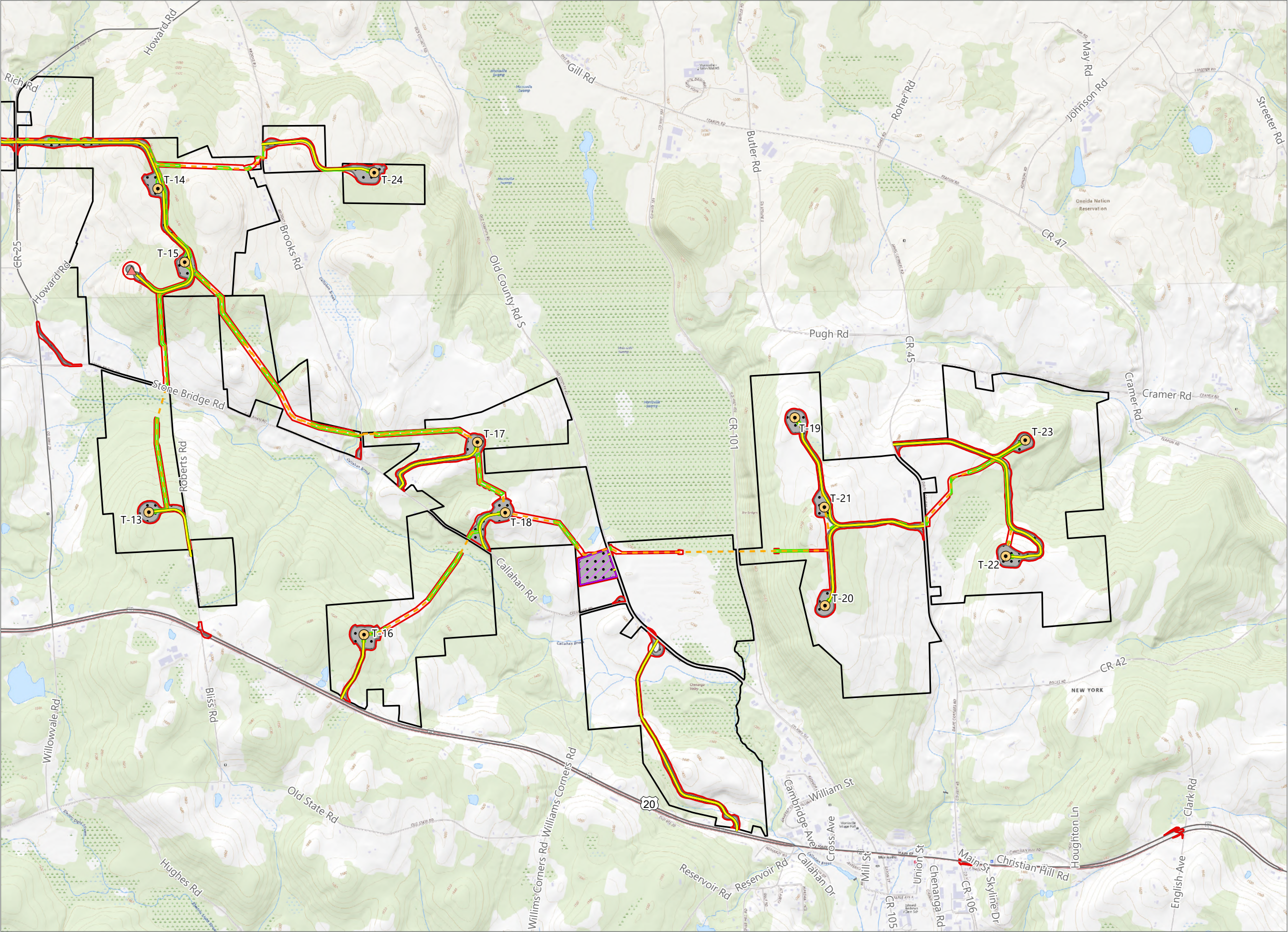
Sheet 1 of 2



Prepared August 26, 2024  
Basemap: Esri "USGS Topo" map service



Figure 3-1. Topographic Map - Revision 1

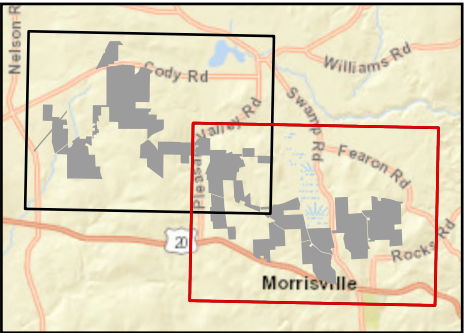


**Hoffman Falls Wind**

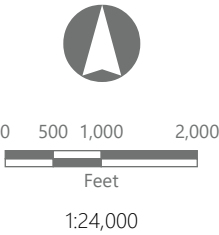
Towns of Eaton, Fenner, Nelson and  
Smithfield, Madison County,  
New York

**Section 94-c Second Supplement  
Matter No. 23-0038**

- Wind Turbine
- Permanent MET Tower
- Access Road
- Collection Line
- Laydown Yard
- Limit of Vegetation Management
- Limit of Grading
- Limit of Disturbance
- Facility Site



Sheet 2 of 2



Prepared August 26, 2024  
Basemap: Esri "USGS Topo" map service