



Field Data Sheet



Notes :

Do you need to report observations of another open field?
Yes



Field Data Sheet

Corresponding Point ID(s): 51, 50

Anthropogenic Disturbance/Management Practices: Traffic Noise

Primary Open Field Cover Type: Field Cropland (including hay, wheat, oats, etc.)

Estimated Grass Cover (%): None

Estimated Forb Cover (%): 90-100%

Estimated Woody Vegetation Cover (%): None

Estimated Bare Ground (%): None

Estimated Litter Depth (inches): None

Average Vegetation Height (inches): 10

Dominant Plant Species (Common Names): Alfalfa, dandelion

Invasive Plant Species (Common Names):

Representative Photo(s):



Field Data Sheet



Notes :

Near a small pond

Do you need to report observations of another open field?
Yes



Field Data Sheet

Corresponding Point ID(s): 49, 48, 47

Anthropogenic Disturbance/Management Practices: Traffic Noise

Primary Open Field Cover Type: Row Cropland (Active)

Estimated Grass Cover (%): None

Estimated Forb Cover (%): None

Estimated Woody Vegetation Cover (%): None

Estimated Bare Ground (%): 90-100%

Estimated Litter Depth (inches): None

Average Vegetation Height (inches): 0

Dominant Plant Species (Common Names):

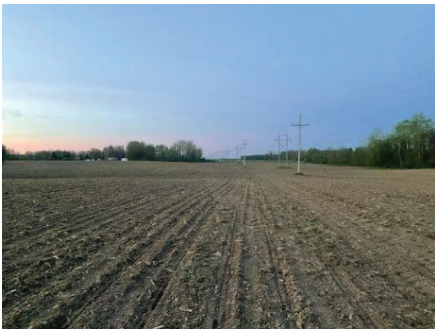
Invasive Plant Species (Common Names):

Representative Photo(s):



This appendix has been redacted from this publicly available document because it contains protected/confidential information regarding species listed as endangered, threatened, or special concern in New York.

EDR
Field Data Sheet



EDR
Field Data Sheet



EDR
Field Data Sheet

Notes :

Do you need to report observations of another open field?
Yes

EDR
Field Data Sheet

Corresponding Point /D(s): 92, 91, 90

Anthropogenic Disturbance/Management Practices: Farm Equipment Noise

Primary Open Field Cover Type: Field Cropland (including hay, wheat, oats, etc.)

Estimated Grass Cover (B): 50-90%

Estimated Forb Cover (B): 10-25%

Estimated Woody Vegetation Cover (B): None

Estimated Bare Ground (B): 10-25%

Estimated Hitter Depth (inches): None

Average Vegetation Height (inches): 5

Dominant Plant Species (Common Names): Grass sp, dandelion, wheat sp.

Invasive Plant Species (Common Names):

Representative Photo(s):



Field Data Sheet



Field Data Sheet



Field Data Sheet



Notes :
Point 92, 91 and 90.

Do you need to report observations of another open field?
Yes



Field Data Sheet

Corresponding Point /D(s): 86,87,88,89

Anthropogenic Disturbance/Management Practices: Traffic Noise

Primary Open Field Cover Type: Row Cropland (Active)

Estimated Grass Cover (B): None

Estimated Forb Cover (B): 1-10%

Estimated Woody Vegetation Cover (B): None

Estimated Bare Ground (B): 50-90%

Estimated Hitter Depth (inches): None

Average Vegetation Height (inches): 2

Dominant Plant Species (Common Names): Deadnettle, dandelion, groundsel

Invasive Plant Species (Common Names):

Representative Photo(s):



Field Data Sheet



Field Data Sheet



Field Data Sheet

Notes :

Do you need to report observations of another open field?
Yes



Field Data Sheet

Corresponding Point /D(s): 97,98,99,100,101,102,103

Anthropogenic Disturbance/Management Practices: Farm Equipment In Use

Primary Open Field Cover Type: Field Cropland (including hay, wheat, oats, etc.)

Estimated Grass Cover (B): 1-10%

Estimated Forb Cover (B): 1-10%

Estimated Woody Vegetation Cover (B): None

Estimated Bare Ground (B): 90-100%

Estimated Hitter Depth (inches): None

Average Vegetation Height (inches): 1

Dominant Plant Species (Common Names): Dandelion

Invasive Plant Species (Common Names):

Representative Photo(s):





Field Data Sheet



Field Data Sheet

Notes :

Do you need to report observations of another open field?
Yes



Field Data Sheet

Corresponding Point /D(s): 104,105

Anthropogenic Disturbance/Management Practices: Farm Equipment In Use

Primary Open Field Cover Type: Field Cropland (including hay, wheat, oats, etc.)

Estimated Grass Cover (B): 50-90%

Estimated Forb Cover (B): None

Estimated Woody Vegetation Cover (B): None

Estimated Bare Ground (B): 25-50%

Estimated Hitter Depth (inches): None

Average Vegetation Height (inches): 4

Dominant Plant Species (Common Names): Dandelion, grass sp

Invasive Plant Species (Common Names):

Representative Photo(s):



Field Data Sheet



This appendix has been redacted from this publicly available document because it contains protected/confidential information regarding species listed as endangered, threatened, or special concern in New York.



Field Data Sheet

Do you need to report observations of another open field?
Yes



Field Data Sheet

Corresponding Point ID(s): 68

Anthropogenic Disturbance/Management Practices: None notable

Primary Open Field Cover Type: Row Cropland (Active)

Estimated Grass Cover (%): None

Estimated Forb Cover (%): None

Estimated Woody Vegetation Cover (%): None

Estimated Bare Ground (%): 90-100%

Estimated Litter Depth (inches): None

Average Vegetation Height (inches): 0

Dominant Plant Species (Common Names): None

Invasive Plant Species (Common Names):

Representative Photo(s):



Notes :

Do you need to report observations of another open field?
Yes



Field Data Sheet

Corresponding Point ID(s): 72

Anthropogenic Disturbance/Management Practices: None notable

Primary Open Field Cover Type: Row Cropland (Active)

Estimated Grass Cover (%): None

Estimated Forb Cover (%): None

Estimated Woody Vegetation Cover (%): None

Estimated Bare Ground (%): 90-100%

Estimated Litter Depth (inches): None

Average Vegetation Height (inches): 0

Dominant Plant Species (Common Names): None

Invasive Plant Species (Common Names):

Representative Photo(s):



Notes :

Do you need to report observations of another open field?
Yes



Field Data Sheet

Corresponding Point ID(s): 71

Anthropogenic Disturbance/Management Practices: None notable

Primary Open Field Cover Type: Row Cropland (Active)

Estimated Grass Cover (%): None

Estimated Forb Cover (%): None

Estimated Woody Vegetation Cover (%): None

Estimated Bare Ground (%): 90-100%

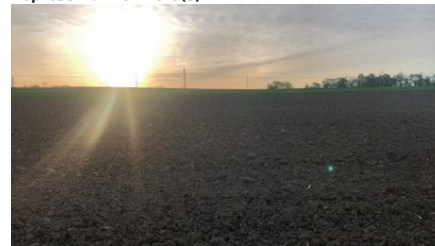
Estimated Litter Depth (inches): None

Average Vegetation Height (inches): 0

Dominant Plant Species (Common Names): None

Invasive Plant Species (Common Names):

Representative Photo(s):



Notes :

Do you need to report observations of another open field?
Yes



Field Data Sheet

Corresponding Point ID(s): 70

Anthropogenic Disturbance/Management Practices: None notable

Primary Open Field Cover Type: Field Cropland (including hay, wheat, oats, etc.)

Estimated Grass Cover (%): None

Estimated Forb Cover (%): 90-100%

Estimated Woody Vegetation Cover (%): None

Estimated Bare Ground (%): None

Estimated Litter Depth (inches): None

Average Vegetation Height (inches): 10

Dominant Plant Species (Common Names): Vetch

Invasive Plant Species (Common Names):

Representative Photo(s):



Notes :

Do you need to report observations of another open field?

Yes



Field Data Sheet

Corresponding Point ID(s): 73

Anthropogenic Disturbance/Management Practices: Traffic Noise

Primary Open Field Cover Type: Row Cropland (Active)

Estimated Grass Cover (%): None

Estimated Forb Cover (%): None

Estimated Woody Vegetation Cover (%): None

Estimated Bare Ground (%): 90-100%

Estimated Litter Depth (inches): None

Average Vegetation Height (inches): 0

Dominant Plant Species (Common Names): None

Invasive Plant Species (Common Names):

Representative Photo(s):



Notes :

Do you need to report observations of another open field?

Yes



Field Data Sheet

Corresponding Point ID(s): 74

Anthropogenic Disturbance/Management Practices: None notable

Primary Open Field Cover Type: Row Cropland (Active)

Estimated Grass Cover (%): None

Estimated Forb Cover (%): None

Estimated Woody Vegetation Cover (%): None

Estimated Bare Ground (%): 90-100%

Estimated Litter Depth (inches): None

Average Vegetation Height (inches): 0

Dominant Plant Species (Common Names): None

Invasive Plant Species (Common Names):

Representative Photo(s):



Notes :

Do you need to report observations of another open field?

Yes



Field Data Sheet

Corresponding Point ID(s): 75

Anthropogenic Disturbance/Management Practices: None notable

Primary Open Field Cover Type: Row Cropland (Active)

Estimated Grass Cover (%): None

Estimated Forb Cover (%): None

Estimated Woody Vegetation Cover (%): None

Estimated Bare Ground (%): 90-100%

Estimated Litter Depth (inches): None

Average Vegetation Height (inches): 0

Dominant Plant Species (Common Names): None

Invasive Plant Species (Common Names):

Representative Photo(s):



Notes :

Do you need to report observations of another open field?

Yes



Field Data Sheet

Corresponding Point ID(s): 76

Anthropogenic Disturbance/Management Practices: None notable

Primary Open Field Cover Type: Row Cropland (Active)

Estimated Grass Cover (%): None

Estimated Forb Cover (%): None

Estimated Woody Vegetation Cover (%): None

Estimated Bare Ground (%): 90-100%

Estimated Litter Depth (inches): None

Average Vegetation Height (inches): 0

Dominant Plant Species (Common Names): None

Invasive Plant Species (Common Names):

Representative Photo(s):



Notes :

Do you need to report observations of another open field?

Yes



Field Data Sheet

Corresponding Point ID(s): 77

Anthropogenic Disturbance/Management Practices: None notable

Primary Open Field Cover Type: Row Cropland (Active)

Estimated Grass Cover (%): None

Estimated Forb Cover (%): None

Estimated Woody Vegetation Cover (%): None

Estimated Bare Ground (%): 90-100%

Estimated Litter Depth (inches): None

Average Vegetation Height (inches): 0

Dominant Plant Species (Common Names): None

Invasive Plant Species (Common Names):

Representative Photo(s):



Notes :

Do you need to report observations of another open field?

Yes



Field Data Sheet

Corresponding Point ID(s): 78

Anthropogenic Disturbance/Management Practices: None notable

Primary Open Field Cover Type: Row Cropland (Active)

Estimated Grass Cover (%): None

Estimated Forb Cover (%): None

Estimated Woody Vegetation Cover (%): None

Estimated Bare Ground (%): 90-100%

Estimated Litter Depth (inches): None

Average Vegetation Height (inches): 0

Dominant Plant Species (Common Names): None

Invasive Plant Species (Common Names):

Representative Photo(s):



Notes :

Do you need to report observations of another open field?

Yes



Field Data Sheet

Corresponding Point ID(s): 83

Anthropogenic Disturbance/Management Practices: Farm Equipment In Use

Primary Open Field Cover Type: Row Cropland (Active)

Estimated Grass Cover (%): None

Estimated Forb Cover (%): None

Estimated Woody Vegetation Cover (%): None

Estimated Bare Ground (%): 90-100%

Estimated Litter Depth (inches): None

Average Vegetation Height (inches): 0

Dominant Plant Species (Common Names): None

Invasive Plant Species (Common Names):

Representative Photo(s):



Notes :

Do you need to report observations of another open field?

Yes



Field Data Sheet

Corresponding Point ID(s): 80

Anthropogenic Disturbance/Management Practices: Farm Equipment In Use

Primary Open Field Cover Type: Row Cropland (Active)

Estimated Grass Cover (%): None

Estimated Forb Cover (%): None

Estimated Woody Vegetation Cover (%): None

Estimated Bare Ground (%): 90-100%

Estimated Litter Depth (inches): None

Average Vegetation Height (inches): 0

Dominant Plant Species (Common Names): None

Invasive Plant Species (Common Names):

Representative Photo(s):



Notes :

Do you need to report observations of another open field?

Yes



Field Data Sheet

Corresponding Point ID(s): 82

Anthropogenic Disturbance/Management Practices: Farm Equipment Noise

Primary Open Field Cover Type: Row Cropland (Active)

Estimated Grass Cover (%): None

Estimated Forb Cover (%): None

Estimated Woody Vegetation Cover (%): None

Estimated Bare Ground (%): 90-100%

Estimated Litter Depth (inches): None

Average Vegetation Height (inches): 0

Dominant Plant Species (Common Names): None

Invasive Plant Species (Common Names):

Representative Photo(s):



Notes :

Do you need to report observations of another open field?

Yes



Field Data Sheet

Corresponding Point ID(s): 79

Anthropogenic Disturbance/Management Practices: Farm Equipment In Use

Primary Open Field Cover Type: Row Cropland (Active)

Estimated Grass Cover (%): None

Estimated Forb Cover (%): None

Estimated Woody Vegetation Cover (%): None

Estimated Bare Ground (%): 90-100%

Estimated Litter Depth (inches): None

Average Vegetation Height (inches): 0

Dominant Plant Species (Common Names): None

Invasive Plant Species (Common Names):

Representative Photo(s):



Notes :

Do you need to report observations of another open field?

Yes



Field Data Sheet

Corresponding Point ID(s): 81

Anthropogenic Disturbance/Management Practices: None notable

Primary Open Field Cover Type: Row Cropland (Active)

Estimated Grass Cover (%): 1-10%

Estimated Forb Cover (%): 1-10%

Estimated Woody Vegetation Cover (%): None

Estimated Bare Ground (%): 90-100%

Estimated Litter Depth (inches): None

Average Vegetation Height (inches): 1

Dominant Plant Species (Common Names): Grasses

Invasive Plant Species (Common Names):

Representative Photo(s):



Notes :

Do you need to report observations of another open field?

Yes

This appendix has been redacted from this publicly available document because it contains protected/confidential information regarding species listed as endangered, threatened, or special concern in New York.



Field Data Sheet

Open Field Condition Observations

Corresponding Point /D(s): 62

Anthropogenic Disturbance/Management Practices: None notable

Primary Open Field Cover Type: Field Cropland (including hay, wheat, oats, etc.)

Estimated Grass Cover (B): 90-100%

Estimated Forb Cover (B): 1-10%

Estimated Woody Vegetation Cover (B): None

Estimated Bare Ground (B): None

Estimated Hitter Depth (inches): None

Average Vegetation Height (inches): 14

Dominant Plant Species (Common Names): Grass sp

Invasive Plant Species (Common Names):

Representative Photo(s):



Field Data Sheet

Notes :

Do you need to report observations of another open field? Yes



Field Data Sheet

Corresponding Point /D(s): 63-66

Anthropogenic Disturbance/Management Practices: None notable

Primary Open Field Cover Type: Row Cropland (Active)

Estimated Grass Cover (B): 50-90%

Estimated Forb Cover (B): 10-25%

Estimated Woody Vegetation Cover (B): None

Estimated Bare Ground (B): 10-25%

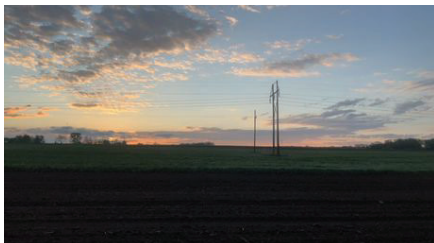
Estimated Hitter Depth (inches): None

Average Vegetation Height (inches): 12

Dominant Plant Species (Common Names): Clover, grass, dandelion

Invasive Plant Species (Common Names):

Representative Photo(s):



Field Data Sheet





Field Data Sheet

Notes :

Do you need to report observations of another open field?
Yes



Field Data Sheet

Corresponding Point /D(s): 67

Anthropogenic Disturbance/Management Practices: Traffic Noise

Primary Open Field Cover Type: Row Cropland (Active)

Estimated Grass Cover (B): 10-25%

Estimated Forb Cover (B): 1-10%

Estimated Woody Vegetation Cover (B): None

Estimated Bare Ground (B): 50-90%

Estimated Hitter Depth (inches): None

Average Vegetation Height (inches): 10

Dominant Plant Species (Common Names): Dandelion, clover

Invasive Plant Species (Common Names):

Representative Photo(s):



Field Data Sheet



Notes :

Do you need to report observations of another open field?
Yes



Field Data Sheet

Corresponding Point /D(s): 68-71

Anthropogenic Disturbance/Management Practices: None notable

Primary Open Field Cover Type: Row Cropland (Active)

Estimated Grass Cover (B): 10-25%

Estimated Forb Cover (B): 50-90%

Estimated Woody Vegetation Cover (B): None

Estimated Bare Ground (B): 25-50%

Estimated Hitter Depth (inches): None

Average Vegetation Height (inches): 12

Dominant Plant Species (Common Names): Clover, dandelion

Invasive Plant Species (Common Names):

Representative Photo(s):





Field Data Sheet



Field Data Sheet

Notes :

Do you need to report observations of another open field?
Yes



Field Data Sheet

Corresponding Point ID(s): 72

Anthropogenic Disturbance/Management Practices: Traffic Noise

Primary Open Field Cover Type: Row Cropland (Active)

Estimated Grass Cover (B): None

Estimated Forb Cover (B): 1-10%

Estimated Woody Vegetation Cover (B): None

Estimated Bare Ground (B): 90-100%

Estimated Hitter Depth (inches): None

Average Vegetation Height (inches): 0

Dominant Plant Species (Common Names):

Invasive Plant Species (Common Names):

Representative Photo(s):



Field Data Sheet

Notes :

Do you need to report observations of another open field?
Yes



Field Data Sheet

Corresponding Point /D(s): 73-78

Anthropogenic Disturbance/Management Practices: None notable

Primary Open Field Cover Type: Row Cropland (Active)

Estimated Grass Cover (B): 1-10%

Estimated Forb Cover (B): 1-10%

Estimated Woody Vegetation Cover (B): None

Estimated Bare Ground (B): 90-100%

Estimated Hitter Depth (inches): None

Average Vegetation Height (inches): 0

Dominant Plant Species (Common Names):

Invasive Plant Species (Common Names):

Representative Photo(s):



Field Data Sheet



Field Data Sheet



Notes :

Do you need to report observations of another open field?
No



Field Data Sheet

Weather Conditions at End of Survey

Temperature (°F): 54

Wind Speed (mph): 8 - 12 (Gentle Breeze; Leaves and Small twigs in constant motion)

Wind Direction: W

Cloud Cover: Mostly Cloudy (50% - 90%)

Visibility: Good (10+ miles; clear)

Precipitation: None (Clear)

Weather Notes:

Were there any notable weather events during the survey? No

Bird Observation Summary

Were any Histed Species (Endangered/Threatened/Special Concern) observed?
Yes

Were probable, possible, or confirmed breeding behaviors observed for any Histed Species (Endangered/Threatened/Special Concern)?
No

Were there additional photos documenting birds observed, habitat conditions, and/or other features of interest?
No

Additional Photo(s):

Incidental bird species observed outside of timed point count surveys (Alpha Codes or Common Names):

Overall Survey Notes:



Field Data Sheet

Breeding Bird Survey

Submitted By: jkearney@edrdpc.com
Submitted Time: May 18, 2022 10:46 AM

Survey Information

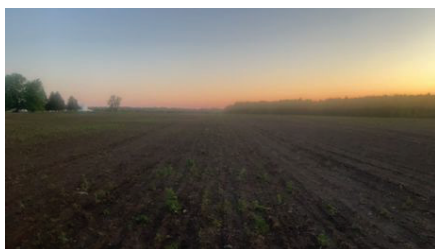
Project Name: Agricola Wind
Survey Date: May 18, 2022
Surveyor Name: James Kearney
Points Surveyed: 79-96, 104, 105
Survey Start Time: 05:25
Survey End Time: 10:27

Weather Conditions at Start of Survey

Temperature (°F): 44
Wind Speed (mph): 1 – 3 (Light Air; Smoke drifts)
Wind Direction: NW
Cloud Cover: None (Clear)
Visibility: Good (10+ miles; clear)
Precipitation: None (Clear)
Weather Notes:



Field Data Sheet



Notes :

Do you need to report observations of another open field?
Yes



Field Data Sheet

Open Field Condition Observations

Corresponding Point /D(s): 104, 105

Anthropogenic Disturbance/Management Practices:

Primary Open Field Cover Type: Row Cropland (Active)

Estimated Grass Cover (B): 1-10%

Estimated Forb Cover (B): 10-25%

Estimated Woody Vegetation Cover (B): None

Estimated Bare Ground (B): 50-90%

Estimated Hitter Depth (inches): None

Average Vegetation Height (inches): 3

Dominant Plant Species (Common Names): Dandelion, grass spp

Invasive Plant Species (Common Names):

Representative Photo(s):



Field Data Sheet

Corresponding Point /D(s): 86-89

Anthropogenic Disturbance/Management Practices: None notable

Primary Open Field Cover Type: Field Cropland (including hay, wheat, oats, etc.)

Estimated Grass Cover (B): None

Estimated Forb Cover (B): 10-25%

Estimated Woody Vegetation Cover (B): None

Estimated Bare Ground (B): 50-90%

Estimated Hitter Depth (inches): None

Average Vegetation Height (inches): 3

Dominant Plant Species (Common Names): Dandelion, deadnettle

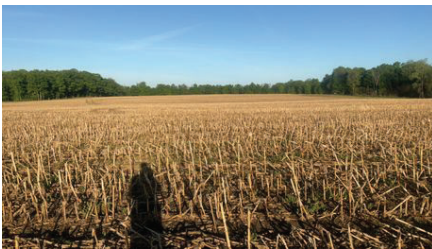
Invasive Plant Species (Common Names):

Representative Photo(s):





Field Data Sheet



Field Data Sheet

Notes :

Do you need to report observations of another open field?
Yes



Field Data Sheet

Corresponding Point ID(s): 93-95

Anthropogenic Disturbance/Management Practices: None notable

Primary Open Field Cover Type: Row Cropland (Active)

Estimated Grass Cover (B): 25-50%

Estimated Forb Cover (B): 1-10%

Estimated Woody Vegetation Cover (B): None

Estimated Bare Ground (B): None

Estimated Hitter Depth (inches): None

Average Vegetation Height (inches): 6

Dominant Plant Species (Common Names):

Invasive Plant Species (Common Names):

Representative Photo(s):



Field Data Sheet





Field Data Sheet

Notes :

Do you need to report observations of another open field?
Yes



Field Data Sheet

Corresponding Point /D(s): 79-85

Anthropogenic Disturbance Management Practices: Traffic Noise

Primary Open Field Cover Type: Row Cropland (Active)

Estimated Grass Cover (B): 1-10%

Estimated Forb Cover (B): 1-10%

Estimated Woody Vegetation Cover (B): None

Estimated Bare Ground (B): 90-100%

Estimated Hitter Depth (inches): None

Average Vegetation Height (inches): 2

Dominant Plant Species (Common Names):

Invasive Plant Species (Common Names):

Representative Photo(s):



Field Data Sheet



Field Data Sheet



Notes :

Do you need to report observations of another open field?
Yes

This appendix has been redacted from this publicly available document because it contains protected/confidential information regarding species listed as endangered, threatened, or special concern in New York.



Field Data Sheet

Open Field Condition Observations

Corresponding Point ID(s): 6-7

Anthropogenic Disturbance/Management Practices: Other (describe in notes)

Primary Open Field Cover Type: Field Cropland (including hay, wheat, oats, etc.)

Estimated Grass Cover (%): 1-10%

Estimated Forb Cover (%): 90-100%

Estimated Woody Vegetation Cover (%): None

Estimated Bare Ground (%): 1-10%

Estimated Litter Depth (inches): 0-1"

Average Vegetation Height (inches): 12

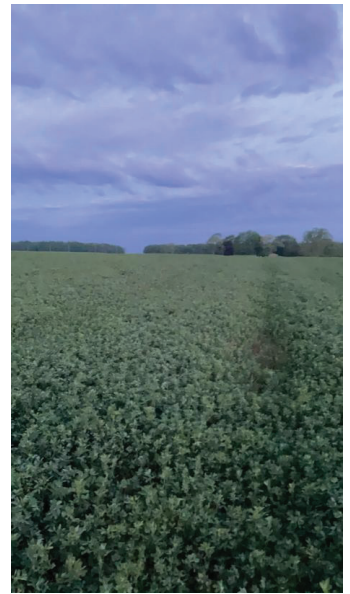
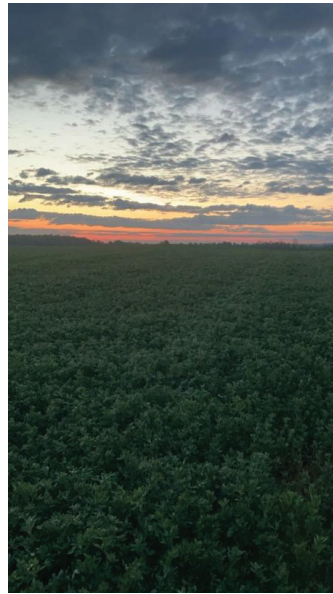
Dominant Plant Species (Common Names): Alfalfa

Invasive Plant Species (Common Names):

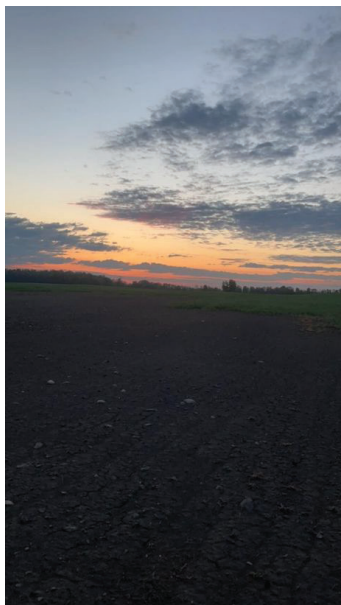
Representative Photo(s):



Field Data Sheet



Field Data Sheet



Field Data Sheet



EDR
Field Data Sheet

Notes :
Can hear what may be animals banging fences before survey began at point 7-
pictures 2+3, point 6 has more bare ground around it pictures 1+4

Do you need to report observations of another open field?
Yes

EDR
Field Data Sheet

Corresponding Point ID(s): 8-9

Anthropogenic Disturbance/Management Practices: None notable

Primary Open Field Cover Type: Row Cropland (Fallow)

Estimated Grass Cover (%): 1-10%

Estimated Forb Cover (%): 1-10%

Estimated Woody Vegetation Cover (%): None

Estimated Bare Ground (%): 25-50%

Estimated Litter Depth (inches): 1-4"

Average Vegetation Height (inches): 2

Dominant Plant Species (Common Names): Dead Corn

Invasive Plant Species (Common Names): None

Representative Photo(s):

EDR
Field Data Sheet



EDR
Field Data Sheet

Notes :
Point 8 inactive corn field, some forbs present photo 1; point 9 has a bit more of
grasses but not much photo 2

Do you need to report observations of another open field?
Yes



Field Data Sheet

Corresponding Point ID(s): 10

Anthropogenic Disturbance/Management Practices: None notable

Primary Open Field Cover Type: Other (describe in notes)

Estimated Grass Cover (%): 25-50%

Estimated Forb Cover (%): 25-50%

Estimated Woody Vegetation Cover (%): 1-10%

Estimated Bare Ground (%): 25-50%

Estimated Litter Depth (inches): 1-4"

Average Vegetation Height (inches): 12

Dominant Plant Species (Common Names): Dead corn and some grassy field mixed with alfalfa

Invasive Plant Species (Common Names):

Representative Photo(s):



Field Data Sheet



Field Data Sheet



Field Data Sheet

Notes :

Both fields potentially fallow, trees E of point

Do you need to report observations of another open field?

Yes



Field Data Sheet

Corresponding Point ID(s): 13, 12,11

Anthropogenic Disturbance/Management Practices: None notable

Primary Open Field Cover Type: Row Cropland (Active)

Estimated Grass Cover (%): 1-10%

Estimated Forb Cover (%): 1-10%

Estimated Woody Vegetation Cover (%): 1-10%

Estimated Bare Ground (%): 90-100%

Estimated Litter Depth (inches): None

Average Vegetation Height (inches): 1

Dominant Plant Species (Common Names): Possibly dead hay

Invasive Plant Species (Common Names):

Representative Photo(s):



Field Data Sheet



Field Data Sheet



Field Data Sheet



EDR
Field Data Sheet

Notes :
Seems like field was recently tilled for new planting season, 12 had a little more forbs, 11 had trees near (West) and a grassy field (South)
Do you need to report observations of another open field?
Yes

EDR
Field Data Sheet

Corresponding Point ID(s): 14,15,16,17
Anthropogenic Disturbance/Management Practices: None notable
Primary Open Field Cover Type: Other (describe in notes)
Estimated Grass Cover (%): 50-90%
Estimated Forb Cover (%): 90-100%
Estimated Woody Vegetation Cover (%): None
Estimated Bare Ground (%): None
Estimated Litter Depth (inches): None
Average Vegetation Height (inches): 14
Dominant Plant Species (Common Names): Tall dandelion plants, grasses, alfalfa
Invasive Plant Species (Common Names):
Representative Photo(s):

EDR
Field Data Sheet



EDR
Field Data Sheet



This appendix has been redacted from this publicly available document because it contains protected/confidential information regarding species listed as endangered, threatened, or special concern in New York.



Field Data Sheet



Field Data Sheet



Notes :

Do you need to report observations of another open field?
Yes



Field Data Sheet

Corresponding Point ID(s): 106-108

Anthropogenic Disturbance/Management Practices: None notable

Primary Open Field Cover Type: Field Cropland (including hay, wheat, oats, etc.)

Estimated Grass Cover (B): 1-10%

Estimated Forb Cover (B): 90-100%

Estimated Woody Vegetation Cover (B): None

Estimated Bare Ground (B): 10-25%

Estimated Hitter Depth (inches): 0-1"

Average Vegetation Height (inches): 13

Dominant Plant Species (Common Names): Clover sp

Invasive Plant Species (Common Names):

Representative Photo(s):



Field Data Sheet



Notes :

Do you need to report observations of another open field?
Yes



Field Data Sheet

Corresponding Point /D(s): 113-115

Anthropogenic Disturbance/Management Practices: None notable

Primary Open Field Cover Type: Field Cropland (including hay, wheat, oats, etc.)

Estimated Grass Cover (B): 1-10%

Estimated Forb Cover (B): 1-10%

Estimated Woody Vegetation Cover (B): None

Estimated Bare Ground (B): 90-100%

Estimated Hitter Depth (inches): None

Average Vegetation Height (inches): 2

Dominant Plant Species (Common Names):

Invasive Plant Species (Common Names):

Representative Photo(s):



Field Data Sheet



Notes :

Do you need to report observations of another open field?
Yes



Field Data Sheet

Corresponding Point /D(s): 116-120

Anthropogenic Disturbance/Management Practices: Traffic Noise

Primary Open Field Cover Type: Field Cropland (including hay, wheat, oats, etc.)

Estimated Grass Cover (B): 1-10%

Estimated Forb Cover (B): 1-10%

Estimated Woody Vegetation Cover (B): None

Estimated Bare Ground (B): 90-100%

Estimated Hitter Depth (inches): None

Average Vegetation Height (inches): 0

Dominant Plant Species (Common Names):

Invasive Plant Species (Common Names):

Representative Photo(s):



Field Data Sheet



This appendix has been redacted from this publicly available document because it contains protected/confidential information regarding species listed as endangered, threatened, or special concern in New York.



Field Data Sheet



Notes :

Do you need to report observations of another open field?
Yes



Field Data Sheet

Corresponding Point ID(s): 30

Anthropogenic Disturbance/Management Practices: Traffic Noise

Primary Open Field Cover Type: Other (describe in notes)

Estimated Grass Cover (%): 10-25%

Estimated Forb Cover (%): 25-50%

Estimated Woody Vegetation Cover (%): None

Estimated Bare Ground (%): 50-90%

Estimated Litter Depth (inches): 0-1"

Average Vegetation Height (inches): 6

Dominant Plant Species (Common Names): Grasses, dandelion, alfalfa

Invasive Plant Species (Common Names):

Representative Photo(s):



Notes :

Hayfield being converted to row cropland

Do you need to report observations of another open field?
Yes



Field Data Sheet

Corresponding Point ID(s): 28

Anthropogenic Disturbance/Management Practices: Traffic Noise

Primary Open Field Cover Type: Row Cropland (Active)

Estimated Grass Cover (%): 1-10%

Estimated Forb Cover (%): None

Estimated Woody Vegetation Cover (%): None

Estimated Bare Ground (%): 90-100%

Estimated Litter Depth (inches): 0-1"

Average Vegetation Height (inches): 0

Dominant Plant Species (Common Names): Remnant corn and grasses

Invasive Plant Species (Common Names):

Representative Photo(s):



Notes :

Do you need to report observations of another open field?
Yes



Field Data Sheet

Corresponding Point ID(s): 29

Anthropogenic Disturbance/Management Practices: Traffic Noise

Primary Open Field Cover Type: Row Cropland (Active)

Estimated Grass Cover (%): 25-50%

Estimated Forb Cover (%): 1-10%

Estimated Woody Vegetation Cover (%): None

Estimated Bare Ground (%): 50-90%

Estimated Litter Depth (inches): 1-4"

Average Vegetation Height (inches): 4

Dominant Plant Species (Common Names): Remnant grasses and corn

Invasive Plant Species (Common Names):

Representative Photo(s):



Notes :

Do you need to report observations of another open field?
Yes



Field Data Sheet

Corresponding Point ID(s): 27, 26

Anthropogenic Disturbance/Management Practices: Traffic Noise

Primary Open Field Cover Type: Field Cropland (including hay, wheat, oats, etc.)

Estimated Grass Cover (%): 50-90%

Estimated Forb Cover (%): 50-90%

Estimated Woody Vegetation Cover (%): None

Estimated Bare Ground (%): 1-10%

Estimated Litter Depth (inches): 0-1"

Average Vegetation Height (inches): 14-16

Dominant Plant Species (Common Names): Grasses, dandelion, alfalfa

Invasive Plant Species (Common Names):

Representative Photo(s):



Field Data Sheet



Notes :

Do you need to report observations of another open field?

Yes



Field Data Sheet

Corresponding Point ID(s): 34

Anthropogenic Disturbance/Management Practices: Traffic Noise

Primary Open Field Cover Type: Field Cropland (including hay, wheat, oats, etc.)

Estimated Grass Cover (%): 50-90%

Estimated Forb Cover (%): 50-90%

Estimated Woody Vegetation Cover (%): None

Estimated Bare Ground (%): None

Estimated Litter Depth (inches): 0-1"

Average Vegetation Height (inches): 16

Dominant Plant Species (Common Names): Grasses, dandelion, alfalfa

Invasive Plant Species (Common Names):

Representative Photo(s):



Notes :

Do you need to report observations of another open field?

Yes



Field Data Sheet

Corresponding Point ID(s): 33

Anthropogenic Disturbance/Management Practices: Traffic Noise

Primary Open Field Cover Type: Row Cropland (Active)

Estimated Grass Cover (%): 50-90%

Estimated Forb Cover (%): None

Estimated Woody Vegetation Cover (%): None

Estimated Bare Ground (%): 25-50%

Estimated Litter Depth (inches): 1-4"

Average Vegetation Height (inches): 16

Dominant Plant Species (Common Names): Remnant grasses, corn

Invasive Plant Species (Common Names):

Representative Photo(s):



Notes :

Do you need to report observations of another open field?

Yes



Field Data Sheet

Corresponding Point ID(s): 32,31

Anthropogenic Disturbance/Management Practices: Traffic Noise

Primary Open Field Cover Type: Row Cropland (Active)

Estimated Grass Cover (%): 50-90%

Estimated Forb Cover (%): 1-10%

Estimated Woody Vegetation Cover (%): None

Estimated Bare Ground (%): 25-50%

Estimated Litter Depth (inches): 1-4"

Average Vegetation Height (inches): 28

Dominant Plant Species (Common Names): Winter wheat?

Invasive Plant Species (Common Names):

Representative Photo(s):



Field Data Sheet



Notes :

Cover crop appears to have been planted

Do you need to report observations of another open field?

Yes



Field Data Sheet

Corresponding Point ID(s): 138,137,136

Anthropogenic Disturbance/Management Practices: Traffic Noise

Primary Open Field Cover Type: Field Cropland (including hay, wheat, oats, etc.)

Estimated Grass Cover (%): 1-10%

Estimated Forb Cover (%): 90-100%

Estimated Woody Vegetation Cover (%): None

Estimated Bare Ground (%): 1-10%

Estimated Litter Depth (inches): None

Average Vegetation Height (inches): 20

Dominant Plant Species (Common Names): Alfalfa, dandelion

Invasive Plant Species (Common Names):

Representative Photo(s):



Field Data Sheet





Field Data Sheet



Notes :

Do you need to report observations of another open field?

Yes



Field Data Sheet

Corresponding Point ID(s): 47,48

Anthropogenic Disturbance/Management Practices: None notable

Primary Open Field Cover Type: Row Cropland (Active)

Estimated Grass Cover (%): None

Estimated Forb Cover (%): 1-10%

Estimated Woody Vegetation Cover (%): None

Estimated Bare Ground (%): 90-100%

Estimated Litter Depth (inches): 0-1"

Average Vegetation Height (inches): 0.2

Dominant Plant Species (Common Names): Unknown seedlings with cotyledons

Invasive Plant Species (Common Names):

Representative Photo(s):



Field Data Sheet



Notes :

Do you need to report observations of another open field?

Yes



Field Data Sheet

Corresponding Point ID(s): 39-43

Anthropogenic Disturbance/Management Practices: None notable

Primary Open Field Cover Type: Row Cropland (Active)

Estimated Grass Cover (%): None

Estimated Forb Cover (%): 1-10%

Estimated Woody Vegetation Cover (%): None

Estimated Bare Ground (%): 90-100%

Estimated Litter Depth (inches): 0-1"

Average Vegetation Height (inches): 0.2

Dominant Plant Species (Common Names): Unknown seedlings with cotyledons

Invasive Plant Species (Common Names):

Representative Photo(s):



This appendix has been redacted from this publicly available document because it contains protected/confidential information regarding species listed as endangered, threatened, or special concern in New York.



Field Data Sheet

Open Field Condition Observations

Corresponding Point ID(s): 35

Anthropogenic Disturbance/Management Practices: None notable

Primary Open Field Cover Type: Field Cropland (including hay, wheat, oats, etc.)

Estimated Grass Cover (%): None

Estimated Forb Cover (%): 90-100%

Estimated Woody Vegetation Cover (%): None

Estimated Bare Ground (%): None

Estimated Litter Depth (inches): None

Average Vegetation Height (inches): 14

Dominant Plant Species (Common Names): Alfalfa

Invasive Plant Species (Common Names):

Representative Photo(s):



Notes :

Do you need to report observations of another open field?
Yes



Field Data Sheet

Corresponding Point ID(s): 37

Anthropogenic Disturbance/Management Practices: None notable

Primary Open Field Cover Type: Field Cropland (including hay, wheat, oats, etc.)

Estimated Grass Cover (%): None

Estimated Forb Cover (%): 90-100%

Estimated Woody Vegetation Cover (%): None

Estimated Bare Ground (%): None

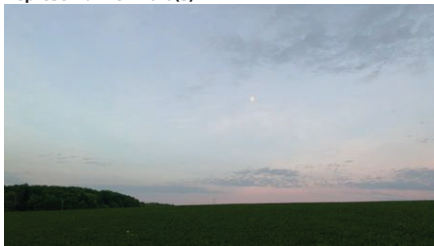
Estimated Litter Depth (inches):

Average Vegetation Height (inches): 14

Dominant Plant Species (Common Names): Alfalfa

Invasive Plant Species (Common Names):

Representative Photo(s):



Notes :

Do you need to report observations of another open field?
Yes



Field Data Sheet

Corresponding Point ID(s): 3612

Anthropogenic Disturbance/Management Practices: None notable

Primary Open Field Cover Type: Field Cropland (including hay, wheat, oats, etc.)

Estimated Grass Cover (%): None

Estimated Forb Cover (%): 90-100%

Estimated Woody Vegetation Cover (%): None

Estimated Bare Ground (%): None

Estimated Litter Depth (inches): None

Average Vegetation Height (inches): 10

Dominant Plant Species (Common Names): Alfalfa

Invasive Plant Species (Common Names):

Representative Photo(s):



Notes :

Do you need to report observations of another open field?
Yes



Field Data Sheet

Corresponding Point ID(s): 38

Anthropogenic Disturbance/Management Practices: ATV/Other Vehicle Noise

Primary Open Field Cover Type: Field Cropland (including hay, wheat, oats, etc.)

Estimated Grass Cover (%): 1-10%

Estimated Forb Cover (%): 90-100%

Estimated Woody Vegetation Cover (%): None

Estimated Bare Ground (%): None

Estimated Litter Depth (inches): None

Average Vegetation Height (inches): 12

Dominant Plant Species (Common Names): Alfalfa

Invasive Plant Species (Common Names):

Representative Photo(s):

Notes :

Do you need to report observations of another open field?
Yes



Field Data Sheet

Corresponding Point ID(s): 49

Anthropogenic Disturbance/Management Practices: None notable

Primary Open Field Cover Type: Row Cropland (Active)

Estimated Grass Cover (%): None

Estimated Forb Cover (%): 1-10%

Estimated Woody Vegetation Cover (%): None

Estimated Bare Ground (%): 90-100%

Estimated Litter Depth (inches): None

Average Vegetation Height (inches): 0.5"

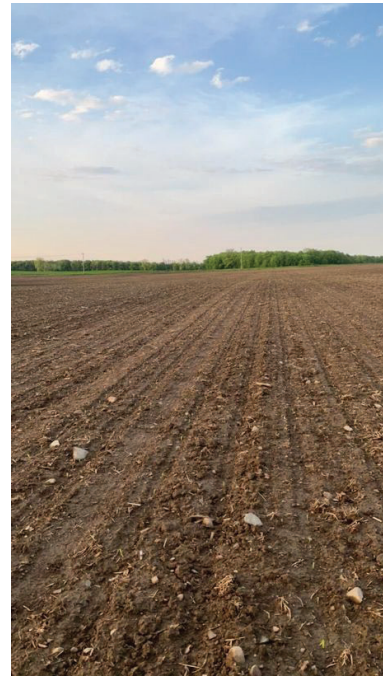
Dominant Plant Species (Common Names):

Invasive Plant Species (Common Names):

Representative Photo(s):



Field Data Sheet



Notes :

Do you need to report observations of another open field?
Yes



Field Data Sheet

Corresponding Point ID(s): 50

Anthropogenic Disturbance/Management Practices: None notable

Primary Open Field Cover Type: Field Cropland (including hay, wheat, oats, etc.)

Estimated Grass Cover (%): None

Estimated Forb Cover (%): 50-90%

Estimated Woody Vegetation Cover (%): None

Estimated Bare Ground (%): None

Estimated Litter Depth (inches): None

Average Vegetation Height (inches): 14

Dominant Plant Species (Common Names): Alfalfa

Invasive Plant Species (Common Names):

Representative Photo(s):



Notes :

Do you need to report observations of another open field?
Yes



Field Data Sheet

Corresponding Point ID(s): 51

Anthropogenic Disturbance/Management Practices: None notable

Primary Open Field Cover Type: Field Cropland (including hay, wheat, oats, etc.)

Estimated Grass Cover (%): None

Estimated Forb Cover (%): 90-100%

Estimated Woody Vegetation Cover (%): None

Estimated Bare Ground (%): None

Estimated Litter Depth (inches): None

Average Vegetation Height (inches): 12

Dominant Plant Species (Common Names): Alfalfa

Invasive Plant Species (Common Names):

Representative Photo(s):



Notes :

Do you need to report observations of another open field?
Yes



Field Data Sheet

Corresponding Point ID(s): 52

Anthropogenic Disturbance/Management Practices: None notable

Primary Open Field Cover Type: Field Cropland (including hay, wheat, oats, etc.)

Estimated Grass Cover (%): None

Estimated Forb Cover (%): 90-100%

Estimated Woody Vegetation Cover (%): None

Estimated Bare Ground (%): None

Estimated Litter Depth (inches): None

Average Vegetation Height (inches): 14

Dominant Plant Species (Common Names): Alfalfa

Invasive Plant Species (Common Names):

Representative Photo(s):



Field Data Sheet



Notes :

Do you need to report observations of another open field?
Yes



Field Data Sheet

Corresponding Point ID(s): 53

Anthropogenic Disturbance/Management Practices: None notable

Primary Open Field Cover Type: Field Cropland (including hay, wheat, oats, etc.)

Estimated Grass Cover (%): None

Estimated Forb Cover (%): 90-100%

Estimated Woody Vegetation Cover (%): None

Estimated Bare Ground (%): None

Estimated Litter Depth (inches): None

Average Vegetation Height (inches): 14

Dominant Plant Species (Common Names): Alfalfa

Invasive Plant Species (Common Names):

Representative Photo(s):

Notes :

Do you need to report observations of another open field?
Yes



Field Data Sheet

Corresponding Point ID(s): 54

Anthropogenic Disturbance/Management Practices: None notable

Primary Open Field Cover Type: Field Cropland (including hay, wheat, oats, etc.)

Estimated Grass Cover (%): None

Estimated Forb Cover (%): 90-100%

Estimated Woody Vegetation Cover (%): None

Estimated Bare Ground (%): None

Estimated Litter Depth (inches): None

Average Vegetation Height (inches): 14

Dominant Plant Species (Common Names): Alfalfa

Invasive Plant Species (Common Names):

Representative Photo(s):

Notes :

Do you need to report observations of another open field?
Yes



Field Data Sheet

Corresponding Point ID(s): 55

Anthropogenic Disturbance/Management Practices: ATV/Other Vehicle Noise

Primary Open Field Cover Type: Field Cropland (including hay, wheat, oats, etc.)

Estimated Grass Cover (%): None

Estimated Forb Cover (%): 90-100%

Estimated Woody Vegetation Cover (%): None

Estimated Bare Ground (%): None

Estimated Litter Depth (inches): None

Average Vegetation Height (inches): 14

Dominant Plant Species (Common Names): Alfalfa u

Invasive Plant Species (Common Names):

Representative Photo(s):



Field Data Sheet



Notes :

Do you need to report observations of another open field?

Yes



Field Data Sheet

Corresponding Point ID(s): 56

Anthropogenic Disturbance/Management Practices: None notable

Primary Open Field Cover Type: Field Cropland (including hay, wheat, oats, etc.)

Estimated Grass Cover (%): None

Estimated Forb Cover (%): 90-100%

Estimated Woody Vegetation Cover (%): None

Estimated Bare Ground (%): None

Estimated Litter Depth (inches): None

Average Vegetation Height (inches): 14

Dominant Plant Species (Common Names): Alfalfa

Invasive Plant Species (Common Names):

Representative Photo(s):



Field Data Sheet



Notes :

Do you need to report observations of another open field?

Yes



Field Data Sheet

Corresponding Point ID(s): 60

Anthropogenic Disturbance/Management Practices: None notable

Primary Open Field Cover Type: Field Cropland (including hay, wheat, oats, etc.)

Estimated Grass Cover (%): None

Estimated Forb Cover (%): 90-100%

Estimated Woody Vegetation Cover (%): None

Estimated Bare Ground (%): None

Estimated Litter Depth (inches): None

Average Vegetation Height (inches): 24

Dominant Plant Species (Common Names): Wheat

Invasive Plant Species (Common Names):

Representative Photo(s):



Field Data Sheet



Notes :

Do you need to report observations of another open field?

Yes



Field Data Sheet

Corresponding Point ID(s): 59

Anthropogenic Disturbance/Management Practices: None notable

Primary Open Field Cover Type: Field Cropland (including hay, wheat, oats, etc.)

Estimated Grass Cover (%): None

Estimated Forb Cover (%): 90-100%

Estimated Woody Vegetation Cover (%): None

Estimated Bare Ground (%): None

Estimated Litter Depth (inches): None

Average Vegetation Height (inches): 24

Dominant Plant Species (Common Names): Wheat

Invasive Plant Species (Common Names):

Representative Photo(s):



Field Data Sheet

Corresponding Point ID(s): 58

Anthropogenic Disturbance/Management Practices: None notable

Primary Open Field Cover Type: Field Cropland (including hay, wheat, oats, etc.)

Estimated Grass Cover (%): None

Estimated Forb Cover (%): 90-100%

Estimated Woody Vegetation Cover (%): None

Estimated Bare Ground (%): 1-10%

Estimated Litter Depth (inches): None

Average Vegetation Height (inches): 14

Dominant Plant Species (Common Names): Wheat

Invasive Plant Species (Common Names):

Representative Photo(s):

Notes :

Do you need to report observations of another open field?

Yes



Field Data Sheet



Notes :

Do you need to report observations of another open field?
Yes



Field Data Sheet

Corresponding Point ID(s): 57

Anthropogenic Disturbance/Management Practices: None notable

Primary Open Field Cover Type: Field Cropland (including hay, wheat, oats, etc.)

Estimated Grass Cover (%): None

Estimated Forb Cover (%): 90-100%

Estimated Woody Vegetation Cover (%): None

Estimated Bare Ground (%): None

Estimated Litter Depth (inches): None

Average Vegetation Height (inches): 20

Dominant Plant Species (Common Names): Wheat

Invasive Plant Species (Common Names):

Representative Photo(s):



Field Data Sheet



Notes :

Do you need to report observations of another open field?
Yes



Field Data Sheet

Corresponding Point ID(s): 61

Anthropogenic Disturbance/Management Practices: None notable

Primary Open Field Cover Type: Field Cropland (including hay, wheat, oats, etc.)

Estimated Grass Cover (%): None

Estimated Forb Cover (%): 90-100%

Estimated Woody Vegetation Cover (%): None

Estimated Bare Ground (%): 1-10%

Estimated Litter Depth (inches): None

Average Vegetation Height (inches): 18

Dominant Plant Species (Common Names): Wheat

Invasive Plant Species (Common Names):

Representative Photo(s):



Field Data Sheet



Field Data Sheet

Notes :

Do you need to report observations of another open field?
Yes



Field Data Sheet

Corresponding Point ID(s): 112

Anthropogenic Disturbance/Management Practices: ATV/Other Vehicle Noise

Primary Open Field Cover Type: Pastureland

Estimated Grass Cover (%): 90-100%

Estimated Forb Cover (%): 1-10%

Estimated Woody Vegetation Cover (%): None

Estimated Bare Ground (%): None

Estimated Litter Depth (inches):

Average Vegetation Height (inches): 10

Dominant Plant Species (Common Names): Grass

Invasive Plant Species (Common Names):

Representative Photo(s):



Field Data Sheet



Field Data Sheet

Corresponding Point ID(s): 111

Anthropogenic Disturbance/Management Practices: None notable

Primary Open Field Cover Type: Pastureland

Estimated Grass Cover (%): 90-100%

Estimated Forb Cover (%): None

Estimated Woody Vegetation Cover (%): None

Estimated Bare Ground (%): None

Estimated Litter Depth (inches): None

Average Vegetation Height (inches): 24

Dominant Plant Species (Common Names): Grass

Invasive Plant Species (Common Names):

Representative Photo(s):

Notes :

Do you need to report observations of another open field?
Yes

Notes :

Do you need to report observations of another open field?
Yes

This appendix has been redacted from this publicly available document because it contains protected/confidential information regarding species listed as endangered, threatened, or special concern in New York.

This appendix has been redacted from this publicly available document because it contains protected/confidential information regarding species listed as endangered, threatened, or special concern in New York.

This appendix has been redacted from this publicly available document because it contains protected/confidential information regarding species listed as endangered, threatened, or special concern in New York.



Field Data Sheet

Open Field Condition Observations

Corresponding Point ID(s): 25

Anthropogenic Disturbance/Management Practices: None notable

Primary Open Field Cover Type: Row Cropland (Active)

Estimated Grass Cover (%): None

Estimated Forb Cover (%): 1-10%

Estimated Woody Vegetation Cover (%): None

Estimated Bare Ground (%): 90-100%

Estimated Litter Depth (inches): None

Average Vegetation Height (inches): 2

Dominant Plant Species (Common Names):

Invasive Plant Species (Common Names):

Representative Photo(s):



Notes :

Do you need to report observations of another open field?

Yes



Field Data Sheet

Corresponding Point ID(s): 23

Anthropogenic Disturbance/Management Practices: ATV/Other Vehicle Noise

Primary Open Field Cover Type: Field Cropland (including hay, wheat, oats, etc.)

Estimated Grass Cover (%): None

Estimated Forb Cover (%): 90-100%

Estimated Woody Vegetation Cover (%): None

Estimated Bare Ground (%): None

Estimated Litter Depth (inches): None

Average Vegetation Height (inches): 18

Dominant Plant Species (Common Names): Alfalfa

Invasive Plant Species (Common Names):

Representative Photo(s):



Field Data Sheet



Notes :

Do you need to report observations of another open field?

Yes



Field Data Sheet

Corresponding Point ID(s): 22

Anthropogenic Disturbance/Management Practices: ATV/Other Vehicle Noise

Primary Open Field Cover Type: Row Cropland (Active)

Estimated Grass Cover (%): None

Estimated Forb Cover (%): 1-10%

Estimated Woody Vegetation Cover (%): None

Estimated Bare Ground (%): 90-100%

Estimated Litter Depth (inches): 0-1"

Average Vegetation Height (inches): 2

Dominant Plant Species (Common Names): Corn

Invasive Plant Species (Common Names):

Representative Photo(s):



Field Data Sheet



Notes :

Do you need to report observations of another open field?
Yes



Field Data Sheet

Corresponding Point ID(s): 24

Anthropogenic Disturbance/Management Practices: ATV/Other Vehicle Noise

Primary Open Field Cover Type: Row Cropland (Active)

Estimated Grass Cover (%): None

Estimated Forb Cover (%): 1-10%

Estimated Woody Vegetation Cover (%): None

Estimated Bare Ground (%): 90-100%

Estimated Litter Depth (inches): None

Average Vegetation Height (inches): 2

Dominant Plant Species (Common Names):

Invasive Plant Species (Common Names):

Representative Photo(s):

Notes :

Do you need to report observations of another open field?
Yes



Field Data Sheet

Corresponding Point ID(s): 20

Anthropogenic Disturbance/Management Practices: ATV/Other Vehicle Noise

Primary Open Field Cover Type: Row Cropland (Active)

Estimated Grass Cover (%): None

Estimated Forb Cover (%): 1-10%

Estimated Woody Vegetation Cover (%): None

Estimated Bare Ground (%): 90-100%

Estimated Litter Depth (inches): None

Average Vegetation Height (inches): 2

Dominant Plant Species (Common Names):

Invasive Plant Species (Common Names):

Representative Photo(s):



Field Data Sheet



Notes :

Do you need to report observations of another open field?
Yes



Field Data Sheet

Corresponding Point ID(s): 21

Anthropogenic Disturbance/Management Practices: None notable

Primary Open Field Cover Type: Field Cropland (including hay, wheat, oats, etc.)

Estimated Grass Cover (%): None

Estimated Forb Cover (%): 90-100%

Estimated Woody Vegetation Cover (%): None

Estimated Bare Ground (%): None

Estimated Litter Depth (inches): None

Average Vegetation Height (inches): 18

Dominant Plant Species (Common Names): Alfalfa

Invasive Plant Species (Common Names):

Representative Photo(s):



Field Data Sheet



Notes :

Do you need to report observations of another open field?
Yes



Field Data Sheet

Corresponding Point ID(s): 19

Anthropogenic Disturbance/Management Practices: None notable

Primary Open Field Cover Type: Field Cropland (including hay, wheat, oats, etc.)

Estimated Grass Cover (%): None

Estimated Forb Cover (%): 90-100%

Estimated Woody Vegetation Cover (%): None

Estimated Bare Ground (%): None

Estimated Litter Depth (inches): None

Average Vegetation Height (inches): 17

Dominant Plant Species (Common Names): Alfalfa

Invasive Plant Species (Common Names):

Representative Photo(s):



Field Data Sheet



Notes :

Do you need to report observations of another open field?
Yes



Field Data Sheet

Corresponding Point ID(s): 18

Anthropogenic Disturbance/Management Practices: ATV/Other Vehicle Noise

Primary Open Field Cover Type: Row Cropland (Active)

Estimated Grass Cover (%): None

Estimated Forb Cover (%): 1-10%

Estimated Woody Vegetation Cover (%): None

Estimated Bare Ground (%): 90-100%

Estimated Litter Depth (inches): None

Average Vegetation Height (inches): 2

Dominant Plant Species (Common Names):

Invasive Plant Species (Common Names):

Representative Photo(s):



Field Data Sheet



Notes :

Do you need to report observations of another open field?

Yes



Field Data Sheet

Corresponding Point ID(s): 13

Anthropogenic Disturbance/Management Practices: ATV/Other Vehicle Noise

Primary Open Field Cover Type: Row Cropland (Fallow)

Estimated Grass Cover (%): None

Estimated Forb Cover (%): None

Estimated Woody Vegetation Cover (%): None

Estimated Bare Ground (%): 90-100%

Estimated Litter Depth (inches): None

Average Vegetation Height (inches): 0

Dominant Plant Species (Common Names):

Invasive Plant Species (Common Names):

Representative Photo(s):



Field Data Sheet



Notes :

Do you need to report observations of another open field?

Yes



Field Data Sheet

Corresponding Point ID(s): 12

Anthropogenic Disturbance/Management Practices: ATV/Other Vehicle Noise

Primary Open Field Cover Type: Row Cropland (Fallow)

Estimated Grass Cover (%): None

Estimated Forb Cover (%): None

Estimated Woody Vegetation Cover (%): None

Estimated Bare Ground (%): 90-100%

Estimated Litter Depth (inches): None

Average Vegetation Height (inches): 0

Dominant Plant Species (Common Names):

Invasive Plant Species (Common Names):

Representative Photo(s):

Notes :

Do you need to report observations of another open field?
Yes



Field Data Sheet

Corresponding Point ID(s): 11

Anthropogenic Disturbance/Management Practices: None notable

Primary Open Field Cover Type: Row Cropland (Fallow)

Estimated Grass Cover (%): 1-10%

Estimated Forb Cover (%): None

Estimated Woody Vegetation Cover (%): None

Estimated Bare Ground (%): 90-100%

Estimated Litter Depth (inches): None

Average Vegetation Height (inches): 0

Dominant Plant Species (Common Names):

Invasive Plant Species (Common Names):

Representative Photo(s):



Field Data Sheet



Notes :

Do you need to report observations of another open field?
Yes



Field Data Sheet

Corresponding Point ID(s): 14

Anthropogenic Disturbance/Management Practices: None notable

Primary Open Field Cover Type: Pastureland

Estimated Grass Cover (%): 25-50%

Estimated Forb Cover (%): 25-50%

Estimated Woody Vegetation Cover (%): None

Estimated Bare Ground (%): None

Estimated Litter Depth (inches): None

Average Vegetation Height (inches): 18

Dominant Plant Species (Common Names): Grass, dandelion, alfalfa

Invasive Plant Species (Common Names):

Representative Photo(s):



Field Data Sheet



Notes :

Do you need to report observations of another open field?
Yes



Field Data Sheet

Corresponding Point ID(s): 15
Anthropogenic Disturbance/Management Practices: None notable
Primary Open Field Cover Type: Pastureland
Estimated Grass Cover (%): 25-50%
Estimated Forb Cover (%): 50-90%
Estimated Woody Vegetation Cover (%): None
Estimated Bare Ground (%): None
Estimated Litter Depth (inches): None
Average Vegetation Height (inches): 24
Dominant Plant Species (Common Names): Grass, dandelions
Invasive Plant Species (Common Names):
Representative Photo(s):

Notes :

Do you need to report observations of another open field?
Yes



Field Data Sheet

Corresponding Point ID(s): 16
Anthropogenic Disturbance/Management Practices: ATV/Other Vehicle Noise
Primary Open Field Cover Type: Pastureland
Estimated Grass Cover (%): 1-10%
Estimated Forb Cover (%): 90-100%
Estimated Woody Vegetation Cover (%): None
Estimated Bare Ground (%): None
Estimated Litter Depth (inches): None
Average Vegetation Height (inches): 20
Dominant Plant Species (Common Names): Alfalfa
Invasive Plant Species (Common Names):
Representative Photo(s):

Notes :

Do you need to report observations of another open field?
Yes



Field Data Sheet

Corresponding Point ID(s): 17
Anthropogenic Disturbance/Management Practices: ATV/Other Vehicle Noise
Primary Open Field Cover Type: Pastureland
Estimated Grass Cover (%): 1-10%
Estimated Forb Cover (%): 90-100%
Estimated Woody Vegetation Cover (%): None
Estimated Bare Ground (%): None
Estimated Litter Depth (inches): None
Average Vegetation Height (inches): 18
Dominant Plant Species (Common Names): Alfalfa
Invasive Plant Species (Common Names):
Representative Photo(s):

Notes :

Do you need to report observations of another open field?
Yes



Field Data Sheet

Corresponding Point ID(s): 8

Anthropogenic Disturbance/Management Practices: Traffic Noise

Primary Open Field Cover Type: Row Cropland (Fallow)

Estimated Grass Cover (%): None

Estimated Forb Cover (%): None

Estimated Woody Vegetation Cover (%): None

Estimated Bare Ground (%): 90-100%

Estimated Litter Depth (inches): None

Average Vegetation Height (inches): 0

Dominant Plant Species (Common Names):

Invasive Plant Species (Common Names):

Representative Photo(s):



Field Data Sheet



Notes :

Do you need to report observations of another open field?
Yes



Field Data Sheet

Corresponding Point ID(s): 7

Anthropogenic Disturbance/Management Practices: Farm Equipment In Use

Primary Open Field Cover Type: Pastureland

Estimated Grass Cover (%): None

Estimated Forb Cover (%): 90-100%

Estimated Woody Vegetation Cover (%): None

Estimated Bare Ground (%): 1-10%

Estimated Litter Depth (inches): 0-1"

Average Vegetation Height (inches): 2

Dominant Plant Species (Common Names): Alfalfa

Invasive Plant Species (Common Names):

Representative Photo(s):



Field Data Sheet



Notes :

Do you need to report observations of another open field?
Yes



Field Data Sheet

Corresponding Point ID(s): 6

Anthropogenic Disturbance/Management Practices: Farm Equipment Noise

Primary Open Field Cover Type: Pastureland

Estimated Grass Cover (%): None

Estimated Forb Cover (%): 90-100%

Estimated Woody Vegetation Cover (%): None

Estimated Bare Ground (%): 1-10%

Estimated Litter Depth (inches): 0-1"

Average Vegetation Height (inches): 2

Dominant Plant Species (Common Names): Alfalfa

Invasive Plant Species (Common Names):

Representative Photo(s):

Notes :

Do you need to report observations of another open field?
Yes



Field Data Sheet

Corresponding Point ID(s): 10

Anthropogenic Disturbance/Management Practices: Farm Equipment In Use

Primary Open Field Cover Type: Row Cropland (Active)

Estimated Grass Cover (%): None

Estimated Forb Cover (%): None

Estimated Woody Vegetation Cover (%): None

Estimated Bare Ground (%): 90-100%

Estimated Litter Depth (inches): None

Average Vegetation Height (inches): 0

Dominant Plant Species (Common Names):

Invasive Plant Species (Common Names):

Representative Photo(s):



Field Data Sheet



Notes :
Farmer tilling the land.

Do you need to report observations of another open field?
Yes



Field Data Sheet

Corresponding Point ID(s): 9

Anthropogenic Disturbance/Management Practices: Farm Equipment In Use

Primary Open Field Cover Type: Row Cropland (Active)

Estimated Grass Cover (%): None

Estimated Forb Cover (%): None

Estimated Woody Vegetation Cover (%): None

Estimated Bare Ground (%): 90-100%

Estimated Litter Depth (inches): None

Average Vegetation Height (inches): 0

Dominant Plant Species (Common Names):

Invasive Plant Species (Common Names):

Representative Photo(s):

This appendix has been redacted from this publicly available document because it contains protected/confidential information regarding species listed as endangered, threatened, or special concern in New York.



Field Data Sheet



Notes :

Do you need to report observations of another open field?

Yes



Field Data Sheet

Corresponding Point ID(s): 109

Anthropogenic Disturbance/Management Practices: None notable

Primary Open Field Cover Type: Pastureland

Estimated Grass Cover (%): 90-100%

Estimated Forb Cover (%): None

Estimated Woody Vegetation Cover (%): None

Estimated Bare Ground (%): None

Estimated Litter Depth (inches): None

Average Vegetation Height (inches): 18

Dominant Plant Species (Common Names): Grass

Invasive Plant Species (Common Names):

Representative Photo(s):



Field Data Sheet



Notes :

Do you need to report observations of another open field?

Yes



Field Data Sheet

Corresponding Point ID(s): 112

Anthropogenic Disturbance/Management Practices: None notable

Primary Open Field Cover Type: Pastureland

Estimated Grass Cover (%): 90-100%

Estimated Forb Cover (%): None

Estimated Woody Vegetation Cover (%): None

Estimated Bare Ground (%): None

Estimated Litter Depth (inches): None

Average Vegetation Height (inches):

Dominant Plant Species (Common Names): Grass

Invasive Plant Species (Common Names):

Representative Photo(s):



Field Data Sheet



Notes :

Do you need to report observations of another open field?
Yes



Field Data Sheet

Corresponding Point ID(s): 111

Anthropogenic Disturbance/Management Practices: None notable

Primary Open Field Cover Type: Pastureland

Estimated Grass Cover (%): 90-100%

Estimated Forb Cover (%): None

Estimated Woody Vegetation Cover (%): None

Estimated Bare Ground (%): None

Estimated Litter Depth (inches): None

Average Vegetation Height (inches): 24

Dominant Plant Species (Common Names): Grass

Invasive Plant Species (Common Names):

Representative Photo(s):



Field Data Sheet



Notes :

Do you need to report observations of another open field?
Yes



Field Data Sheet

Corresponding Point ID(s): 61

Anthropogenic Disturbance/Management Practices: None notable

Primary Open Field Cover Type: Field Cropland (including hay, wheat, oats, etc.)

Estimated Grass Cover (%): None

Estimated Forb Cover (%): 90-100%

Estimated Woody Vegetation Cover (%): None

Estimated Bare Ground (%): None

Estimated Litter Depth (inches): None

Average Vegetation Height (inches): 24

Dominant Plant Species (Common Names): Wheat

Invasive Plant Species (Common Names):

Representative Photo(s):



Field Data Sheet



Notes :

Do you need to report observations of another open field?
Yes



Field Data Sheet

Corresponding Point ID(s): 57

Anthropogenic Disturbance/Management Practices: None notable

Primary Open Field Cover Type: Field Cropland (including hay, wheat, oats, etc.)

Estimated Grass Cover (%): 90-100%

Estimated Forb Cover (%): None

Estimated Woody Vegetation Cover (%): None

Estimated Bare Ground (%): None

Estimated Litter Depth (inches): None

Average Vegetation Height (inches): 36

Dominant Plant Species (Common Names): Wheat

Invasive Plant Species (Common Names):

Representative Photo(s):



Field Data Sheet



Notes :

Do you need to report observations of another open field?
Yes



Field Data Sheet

Corresponding Point ID(s): 58

Anthropogenic Disturbance/Management Practices: None notable

Primary Open Field Cover Type: Field Cropland (including hay, wheat, oats, etc.)

Estimated Grass Cover (%): 90-100%

Estimated Forb Cover (%): None

Estimated Woody Vegetation Cover (%): None

Estimated Bare Ground (%): None

Estimated Litter Depth (inches): None

Average Vegetation Height (inches): 30

Dominant Plant Species (Common Names): Wheat

Invasive Plant Species (Common Names):

Representative Photo(s):



Field Data Sheet



Notes :

Do you need to report observations of another open field?

Yes



Field Data Sheet

Corresponding Point ID(s): 59

Anthropogenic Disturbance/Management Practices: None notable

Primary Open Field Cover Type: Field Cropland (including hay, wheat, oats, etc.)

Estimated Grass Cover (%): 90-100%

Estimated Forb Cover (%): None

Estimated Woody Vegetation Cover (%): None

Estimated Bare Ground (%): None

Estimated Litter Depth (inches): None

Average Vegetation Height (inches): 26

Dominant Plant Species (Common Names): Wheat

Invasive Plant Species (Common Names):

Representative Photo(s):



Field Data Sheet



Notes :

Do you need to report observations of another open field?

Yes



Field Data Sheet

Corresponding Point ID(s): 60

Anthropogenic Disturbance/Management Practices: None notable

Primary Open Field Cover Type: Field Cropland (including hay, wheat, oats, etc.)

Estimated Grass Cover (%): 90-100%

Estimated Forb Cover (%): None

Estimated Woody Vegetation Cover (%): None

Estimated Bare Ground (%): None

Estimated Litter Depth (inches): None

Average Vegetation Height (inches): 30

Dominant Plant Species (Common Names): Wheat

Invasive Plant Species (Common Names):

Representative Photo(s):

Notes :

Do you need to report observations of another open field?

Yes



Field Data Sheet

Corresponding Point ID(s): 56

Anthropogenic Disturbance/Management Practices: None notable

Primary Open Field Cover Type: Field Cropland (including hay, wheat, oats, etc.)

Estimated Grass Cover (%): None

Estimated Forb Cover (%): 90-100%

Estimated Woody Vegetation Cover (%): None

Estimated Bare Ground (%): None

Estimated Litter Depth (inches): None

Average Vegetation Height (inches): 12

Dominant Plant Species (Common Names): Alfalfa

Invasive Plant Species (Common Names):

Representative Photo(s):



Field Data Sheet



Notes :

Do you need to report observations of another open field?
Yes



Field Data Sheet

Corresponding Point ID(s): 55

Anthropogenic Disturbance/Management Practices: None notable

Primary Open Field Cover Type: Field Cropland (including hay, wheat, oats, etc.)

Estimated Grass Cover (%): None

Estimated Forb Cover (%): 90-100%

Estimated Woody Vegetation Cover (%): None

Estimated Bare Ground (%): None

Estimated Litter Depth (inches): None

Average Vegetation Height (inches): 18

Dominant Plant Species (Common Names): Alfalfa

Invasive Plant Species (Common Names):

Representative Photo(s):



Field Data Sheet



Notes :

Do you need to report observations of another open field?
Yes



Field Data Sheet

Corresponding Point ID(s): 51

Anthropogenic Disturbance/Management Practices: None notable

Primary Open Field Cover Type: Field Cropland (including hay, wheat, oats, etc.)

Estimated Grass Cover (%): None

Estimated Forb Cover (%): 90-100%

Estimated Woody Vegetation Cover (%): None

Estimated Bare Ground (%): None

Estimated Litter Depth (inches): None

Average Vegetation Height (inches): 18

Dominant Plant Species (Common Names): Alfalfa

Invasive Plant Species (Common Names):

Representative Photo(s):



Field Data Sheet



Notes :

Do you need to report observations of another open field?
Yes



Field Data Sheet

Corresponding Point ID(s): 50

Anthropogenic Disturbance/Management Practices: None notable

Primary Open Field Cover Type: Field Cropland (including hay, wheat, oats, etc.)

Estimated Grass Cover (%): None

Estimated Forb Cover (%): 90-100%

Estimated Woody Vegetation Cover (%): None

Estimated Bare Ground (%): None

Estimated Litter Depth (inches): None

Average Vegetation Height (inches): 18

Dominant Plant Species (Common Names): Alfalfa

Invasive Plant Species (Common Names):

Representative Photo(s):



Field Data Sheet



Notes :

Do you need to report observations of another open field?
Yes



Field Data Sheet

Corresponding Point ID(s): 49

Anthropogenic Disturbance/Management Practices: None notable

Primary Open Field Cover Type: Row Cropland (Active)

Estimated Grass Cover (%): None

Estimated Forb Cover (%): 1-10%

Estimated Woody Vegetation Cover (%): None

Estimated Bare Ground (%): 90-100%

Estimated Litter Depth (inches): None

Average Vegetation Height (inches): 2

Dominant Plant Species (Common Names):

Invasive Plant Species (Common Names):

Representative Photo(s):



Field Data Sheet



Notes :

Do you need to report observations of another open field?

Yes



Field Data Sheet

Corresponding Point ID(s): 54

Anthropogenic Disturbance/Management Practices: None notable

Primary Open Field Cover Type: Field Cropland (including hay, wheat, oats, etc.)

Estimated Grass Cover (%): None

Estimated Forb Cover (%): 90-100%

Estimated Woody Vegetation Cover (%): None

Estimated Bare Ground (%): None

Estimated Litter Depth (inches): None

Average Vegetation Height (inches): 18

Dominant Plant Species (Common Names): Alfalfa

Invasive Plant Species (Common Names):

Representative Photo(s):



Field Data Sheet



Notes :

Do you need to report observations of another open field?

Yes



Field Data Sheet

Corresponding Point ID(s): 53

Anthropogenic Disturbance/Management Practices: None notable

Primary Open Field Cover Type: Field Cropland (including hay, wheat, oats, etc.)

Estimated Grass Cover (%): None

Estimated Forb Cover (%): 90-100%

Estimated Woody Vegetation Cover (%): None

Estimated Bare Ground (%): None

Estimated Litter Depth (inches): None

Average Vegetation Height (inches): 18

Dominant Plant Species (Common Names): alfalfa

Invasive Plant Species (Common Names):

Representative Photo(s):



Field Data Sheet



Notes :

Do you need to report observations of another open field?

Yes



Field Data Sheet

Corresponding Point ID(s): 52

Anthropogenic Disturbance/Management Practices: None notable

Primary Open Field Cover Type: Field Cropland (including hay, wheat, oats, etc.)

Estimated Grass Cover (%): None

Estimated Forb Cover (%): 90-100%

Estimated Woody Vegetation Cover (%): None

Estimated Bare Ground (%): None

Estimated Litter Depth (inches): None

Average Vegetation Height (inches): 18

Dominant Plant Species (Common Names): Alfalfa

Invasive Plant Species (Common Names):

Representative Photo(s):



Field Data Sheet



Notes :

Do you need to report observations of another open field?

Yes



Field Data Sheet

Corresponding Point ID(s): 38

Anthropogenic Disturbance/Management Practices: Farm Equipment Noise

Primary Open Field Cover Type: Field Cropland (including hay, wheat, oats, etc.)

Estimated Grass Cover (%): None

Estimated Forb Cover (%): 90-100%

Estimated Woody Vegetation Cover (%): None

Estimated Bare Ground (%): None

Estimated Litter Depth (inches): None

Average Vegetation Height (inches): 18

Dominant Plant Species (Common Names): Alfalfa

Invasive Plant Species (Common Names):

Representative Photo(s):



Field Data Sheet



Notes :

Do you need to report observations of another open field?

Yes



Field Data Sheet

Corresponding Point ID(s): 37

Anthropogenic Disturbance/Management Practices: Farm Equipment Noise

Primary Open Field Cover Type: Field Cropland (including hay, wheat, oats, etc.)

Estimated Grass Cover (%): None

Estimated Forb Cover (%): 90-100%

Estimated Woody Vegetation Cover (%): None

Estimated Bare Ground (%): None

Estimated Litter Depth (inches): None

Average Vegetation Height (inches): 16

Dominant Plant Species (Common Names): Alfalfa

Invasive Plant Species (Common Names):

Representative Photo(s):



Field Data Sheet



Notes :

Do you need to report observations of another open field?

Yes



Field Data Sheet

Corresponding Point ID(s): 36

Anthropogenic Disturbance/Management Practices: Farm Equipment Noise

Primary Open Field Cover Type: Field Cropland (including hay, wheat, oats, etc.)

Estimated Grass Cover (%): None

Estimated Forb Cover (%): 90-100%

Estimated Woody Vegetation Cover (%): None

Estimated Bare Ground (%): None

Estimated Litter Depth (inches): None

Average Vegetation Height (inches): 19

Dominant Plant Species (Common Names): Alfalfa

Invasive Plant Species (Common Names):

Representative Photo(s):



Field Data Sheet



Notes :

Do you need to report observations of another open field?
Yes



Field Data Sheet

Corresponding Point ID(s): 36

Anthropogenic Disturbance/Management Practices: None notable

Primary Open Field Cover Type: Field Cropland (including hay, wheat, oats, etc.)

Estimated Grass Cover (%): None

Estimated Forb Cover (%): 90-100%

Estimated Woody Vegetation Cover (%): None

Estimated Bare Ground (%): None

Estimated Litter Depth (inches): None

Average Vegetation Height (inches): 18

Dominant Plant Species (Common Names): Alfalfa

Invasive Plant Species (Common Names):

Representative Photo(s):



Field Data Sheet



Notes :

Do you need to report observations of another open field?
No

This appendix has been redacted from this publicly available document because it contains protected/confidential information regarding species listed as endangered, threatened, or special concern in New York.



Field Data Sheet

Corresponding Point /D(s): 6

Anthropogenic Disturbance/Management Practices: Other (describe in notes)

Primary Open Field Cover Type: Field Cropland (including hay, wheat, oats, etc.)

Estimated Grass Cover (B): 50-90%

Estimated Forb Cover (B): 1-10%

Estimated Woody Vegetation Cover (B): None

Estimated Bare Ground (B): 25-50%

Estimated Hitter Depth (inches): None

Average Vegetation Height (inches): 3

Dominant Plant Species (Common Names): Grass sp, dandelion, clover sp,

Invasive Plant Species (Common Names):

Representative Photo(s):



Field Data Sheet



Notes :

Do you need to report observations of another open field? Yes



Field Data Sheet

Corresponding Point /D(s): 26, ,30

Anthropogenic Disturbance/Management Practices: Traffic Noise

Primary Open Field Cover Type: Row Cropland (Active)

Estimated Grass Cover (B): 1-10%

Estimated Forb Cover (B): None

Estimated Woody Vegetation Cover (B): None

Estimated Bare Ground (B): 90-100%

Estimated Hitter Depth (inches): None

Average Vegetation Height (inches): 1

Dominant Plant Species (Common Names): Grass sp, corn remnants.

Invasive Plant Species (Common Names):

Representative Photo(s):



Field Data Sheet



Notes :

Do you need to report observations of another open field? Yes



Field Data Sheet

Corresponding Point /D(s): 27

Anthropogenic Disturbance/Management Practices: None notable

Primary Open Field Cover Type: Field Cropland (including hay, wheat, oats, etc.)

Estimated Grass Cover (B): 50-90%

Estimated Forb Cover (B): 10-25%

Estimated Woody Vegetation Cover (B): None

Estimated Bare Ground (B): 10-25%

Estimated Hitter Depth (inches): 0-1"

Average Vegetation Height (inches): 30

Dominant Plant Species (Common Names): Grass sp, dandelion, clover sp,

Invasive Plant Species (Common Names):

Representative Photo(s):



Field Data Sheet



Notes :

Do you need to report observations of another open field? Yes



Field Data Sheet

Corresponding Point /D(s): 29

Anthropogenic Disturbance/Management Practices: None notable

Primary Open Field Cover Type: Row Cropland (Active)

Estimated Grass Cover (B): 1-10%

Estimated Forb Cover (B): 10-25%

Estimated Woody Vegetation Cover (B): 10-25%

Estimated Bare Ground (B): 50-90%

Estimated Hitter Depth (inches): None

Average Vegetation Height (inches): 2

Dominant Plant Species (Common Names): Grass sp, bramble sp, skunk cabbage, honey suckle, clover sp,

Invasive Plant Species (Common Names):

Representative Photo(s):



Field Data Sheet



Notes :

Do you need to report observations of another open field? Yes



Field Data Sheet

Corresponding Point /D(s): 30,32, 33

Anthropogenic Disturbance/Management Practices: Traffic Noise

Primary Open Field Cover Type: Row Cropland (Active)

Estimated Grass Cover (B): 50-90%

Estimated Forb Cover (B): 10-25%

Estimated Woody Vegetation Cover (B): None

Estimated Bare Ground (B): 25-50%

Estimated Hitter Depth (inches): 1-4"

Average Vegetation Height (inches): 30

Dominant Plant Species (Common Names): Grass sp, bedstraw sp, dandelion,

Invasive Plant Species (Common Names):

Representative Photo(s):



Field Data Sheet



Field Data Sheet



Notes :

Do you need to report observations of another open field? Yes



Field Data Sheet

Corresponding Point /D(s): 34

Anthropogenic Disturbance/Management Practices: Traffic Noise

Primary Open Field Cover Type: Field Cropland (including hay, wheat, oats, etc.)

Estimated Grass Cover (B): 50-90%

Estimated Forb Cover (B): 10-25%

Estimated Woody Vegetation Cover (B): None

Estimated Bare Ground (B): None

Estimated Hitter Depth (inches): 0-1"

Average Vegetation Height (inches): 36

Dominant Plant Species (Common Names): Grass sp, bedstraw sp, dandelion, clover sp,

Invasive Plant Species (Common Names):

Representative Photo(s):



Field Data Sheet



Notes :

Do you need to report observations of another open field? Yes



Field Data Sheet

Corresponding Point /D(s): 39,40,41, 42,43

Anthropogenic Disturbance/Management Practices: None notable

Primary Open Field Cover Type: Row Cropland (Active)

Estimated Grass Cover (B): 1-10%

Estimated Forb Cover (B): None

Estimated Woody Vegetation Cover (B): None

Estimated Bare Ground (B): 90-100%

Estimated Hitter Depth (inches): None

Average Vegetation Height (inches): 1

Dominant Plant Species (Common Names): Clover sp

Invasive Plant Species (Common Names):

Representative Photo(s):



Field Data Sheet



Field Data Sheet



Notes :

Do you need to report observations of another open field?
Yes



Field Data Sheet

Corresponding Point /D(s): 47, 48

Anthropogenic Disturbance/Management Practices: None notable

Primary Open Field Cover Type: Row Cropland (Active)

Estimated Grass Cover (B): None

Estimated Forb Cover (B): None

Estimated Woody Vegetation Cover (B): None

Estimated Bare Ground (B): 90-100%

Estimated Hitter Depth (inches): None

Average Vegetation Height (inches): 1

Dominant Plant Species (Common Names): Clover sp, corn

Invasive Plant Species (Common Names):

Representative Photo(s):



Field Data Sheet



Notes :

Do you need to report observations of another open field? Yes



Field Data Sheet

Corresponding Point /D(s): 136, 137

Anthropogenic Disturbance/Management Practices: Farm Equipment Noise

Primary Open Field Cover Type: Field Cropland (including hay, wheat, oats, etc.)

Estimated Grass Cover (B): 10-25%

Estimated Forb Cover (B): 50-90%

Estimated Woody Vegetation Cover (B): None

Estimated Bare Ground (B): None

Estimated Hitter Depth (inches): 0-1"

Average Vegetation Height (inches): 30

Dominant Plant Species (Common Names): Legume family sp, dandelion,

Invasive Plant Species (Common Names):

Representative Photo(s):



Field Data Sheet



Notes :

Do you need to report observations of another open field? No

This appendix has been redacted from this publicly available document because it contains protected/confidential information regarding species listed as endangered, threatened, or special concern in New York.



Field Data Sheet

Corresponding Point ID(s): 69

Anthropogenic Disturbance/Management Practices: None notable

Primary Open Field Cover Type: Field Cropland (including hay, wheat, oats, etc.)

Estimated Grass Cover (%): None

Estimated Forb Cover (%): 90-100%

Estimated Woody Vegetation Cover (%): None

Estimated Bare Ground (%): 1-10%

Estimated Litter Depth (inches): 0-1"

Average Vegetation Height (inches): 2

Dominant Plant Species (Common Names): Cut alfalfa

Invasive Plant Species (Common Names):

Representative Photo(s):



Notes :

Do you need to report observations of another open field?

Yes



Field Data Sheet

Corresponding Point ID(s): 68

Anthropogenic Disturbance/Management Practices: None notable

Primary Open Field Cover Type: Row Cropland (Active)

Estimated Grass Cover (%): None

Estimated Forb Cover (%): 1-10%

Estimated Woody Vegetation Cover (%): None

Estimated Bare Ground (%): 90-100%

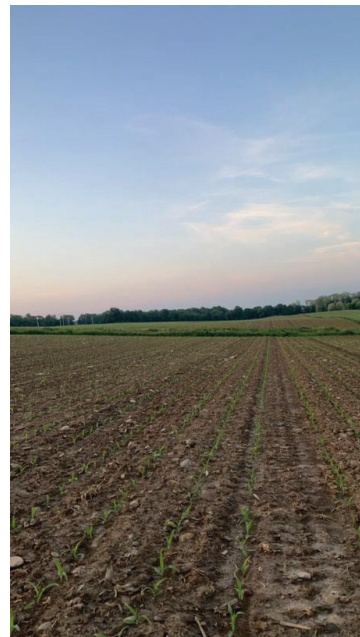
Estimated Litter Depth (inches): None

Average Vegetation Height (inches): 2

Dominant Plant Species (Common Names): Corn

Invasive Plant Species (Common Names):

Representative Photo(s):



Notes :

Do you need to report observations of another open field?

Yes



Field Data Sheet

Corresponding Point ID(s): 71

Anthropogenic Disturbance/Management Practices: None notable

Primary Open Field Cover Type: Row Cropland (Active)

Estimated Grass Cover (%): None

Estimated Forb Cover (%): 90-100%

Estimated Woody Vegetation Cover (%): None

Estimated Bare Ground (%): 1-10%

Estimated Litter Depth (inches): None

Average Vegetation Height (inches): 3

Dominant Plant Species (Common Names): Cut alfalfa, corn

Invasive Plant Species (Common Names):

Representative Photo(s):



Field Data Sheet



Notes :

Do you need to report observations of another open field?

Yes



Field Data Sheet

Corresponding Point ID(s): 72

Anthropogenic Disturbance/Management Practices: None notable

Primary Open Field Cover Type: Row Cropland (Active)

Estimated Grass Cover (%): None

Estimated Forb Cover (%): 1-10%

Estimated Woody Vegetation Cover (%): None

Estimated Bare Ground (%): 90-100%

Estimated Litter Depth (inches): None

Average Vegetation Height (inches): 2

Dominant Plant Species (Common Names): Corn

Invasive Plant Species (Common Names):

Representative Photo(s):



Field Data Sheet



Notes :

Do you need to report observations of another open field?

Yes



Field Data Sheet

Corresponding Point ID(s): 73

Anthropogenic Disturbance/Management Practices: None notable

Primary Open Field Cover Type: Row Cropland (Active)

Estimated Grass Cover (%): None

Estimated Forb Cover (%): 1-10%

Estimated Woody Vegetation Cover (%): None

Estimated Bare Ground (%): 90-100%

Estimated Litter Depth (inches): None

Average Vegetation Height (inches): 2

Dominant Plant Species (Common Names): Corn

Invasive Plant Species (Common Names):

Representative Photo(s):



Field Data Sheet



Notes :

Do you need to report observations of another open field?
Yes



Field Data Sheet

Corresponding Point ID(s): 78

Anthropogenic Disturbance/Management Practices: None notable

Primary Open Field Cover Type: Row Cropland (Active)

Estimated Grass Cover (%): None

Estimated Forb Cover (%): 1-10%

Estimated Woody Vegetation Cover (%): None

Estimated Bare Ground (%): 90-100%

Estimated Litter Depth (inches): None

Average Vegetation Height (inches): 2

Dominant Plant Species (Common Names): Corn

Invasive Plant Species (Common Names):

Representative Photo(s):



Field Data Sheet



Notes :

Do you need to report observations of another open field?
Yes



Field Data Sheet

Corresponding Point ID(s): 77

Anthropogenic Disturbance/Management Practices: None notable

Primary Open Field Cover Type: Row Cropland (Active)

Estimated Grass Cover (%): None

Estimated Forb Cover (%): 1-10%

Estimated Woody Vegetation Cover (%): None

Estimated Bare Ground (%): 90-100%

Estimated Litter Depth (inches): None

Average Vegetation Height (inches): 2

Dominant Plant Species (Common Names): Corn

Invasive Plant Species (Common Names):

Representative Photo(s):



Field Data Sheet



Notes :

Do you need to report observations of another open field?
Yes



Field Data Sheet

Corresponding Point ID(s): 76

Anthropogenic Disturbance/Management Practices: None notable

Primary Open Field Cover Type: Row Cropland (Active)

Estimated Grass Cover (%): None

Estimated Forb Cover (%): 1-10%

Estimated Woody Vegetation Cover (%): None

Estimated Bare Ground (%): 90-100%

Estimated Litter Depth (inches): None

Average Vegetation Height (inches): 2

Dominant Plant Species (Common Names): Corn

Invasive Plant Species (Common Names):

Representative Photo(s):



Field Data Sheet



Notes :

Do you need to report observations of another open field?
Yes



Field Data Sheet

Corresponding Point ID(s): 75

Anthropogenic Disturbance/Management Practices: None notable

Primary Open Field Cover Type: Row Cropland (Active)

Estimated Grass Cover (%): None

Estimated Forb Cover (%): 1-10%

Estimated Woody Vegetation Cover (%): None

Estimated Bare Ground (%): 90-100%

Estimated Litter Depth (inches): None

Average Vegetation Height (inches): 2

Dominant Plant Species (Common Names): Corn

Invasive Plant Species (Common Names):

Representative Photo(s):



Field Data Sheet



Notes :

Do you need to report observations of another open field?

Yes



Field Data Sheet

Corresponding Point ID(s): 74

Anthropogenic Disturbance/Management Practices: None notable

Primary Open Field Cover Type: Row Cropland (Active)

Estimated Grass Cover (%): None

Estimated Forb Cover (%): 1-10%

Estimated Woody Vegetation Cover (%): None

Estimated Bare Ground (%): 90-100%

Estimated Litter Depth (inches): None

Average Vegetation Height (inches): 2

Dominant Plant Species (Common Names): Corn

Invasive Plant Species (Common Names):

Representative Photo(s):



Field Data Sheet



Notes :

Do you need to report observations of another open field?

Yes