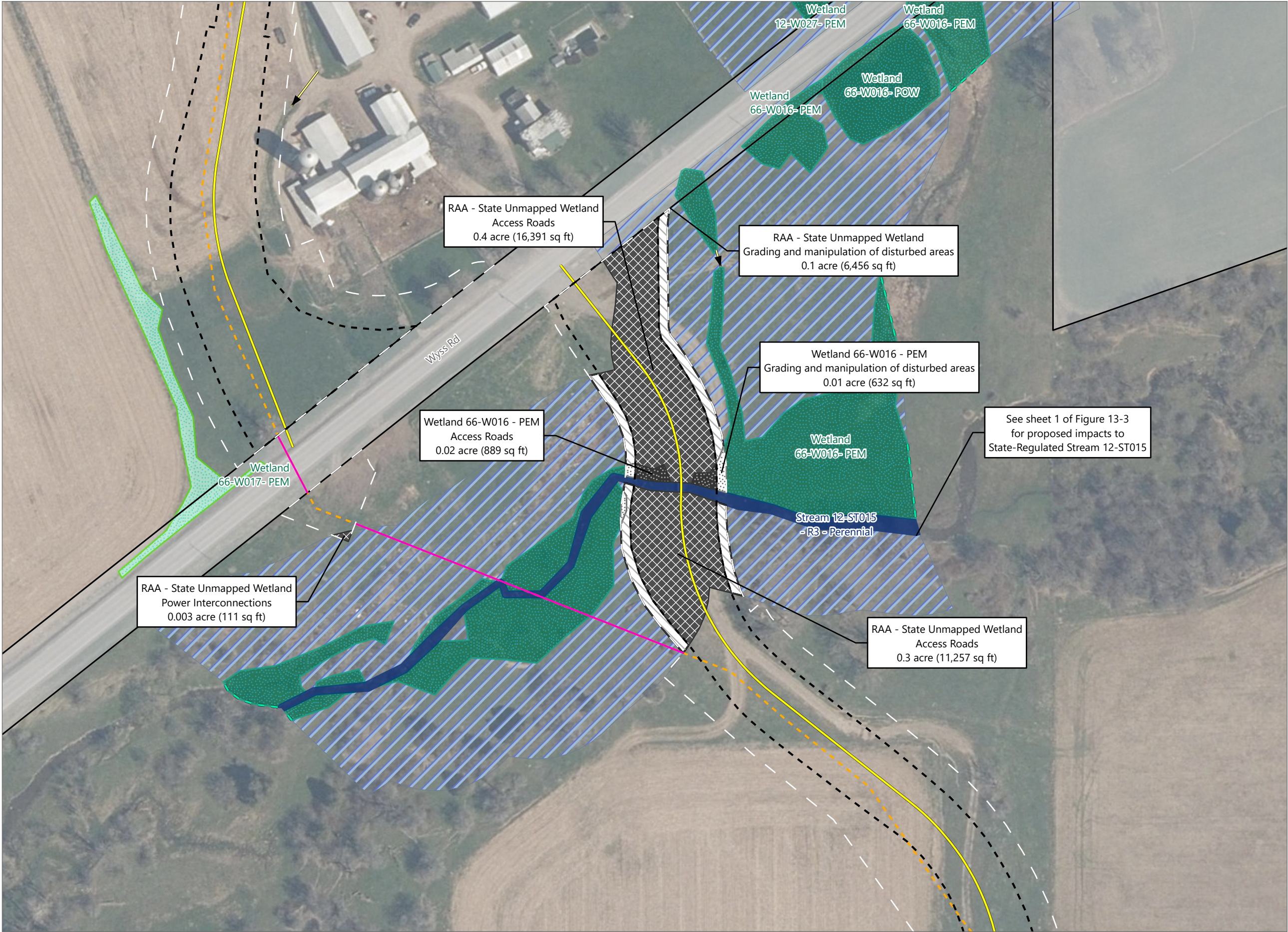


Figure 14-2. Impacts to State-Regulated Wetlands - Revision 1

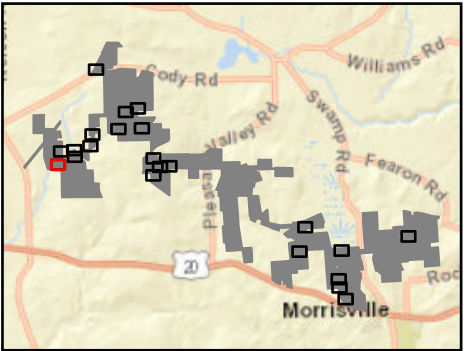


Hoffman Falls Wind

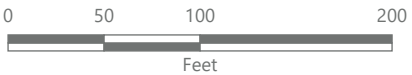
Towns of Eaton, Fenner, Nelson and
Smithfield, Madison County,
New York

**Section 94-c Supplement
Matter No. 23-00038**

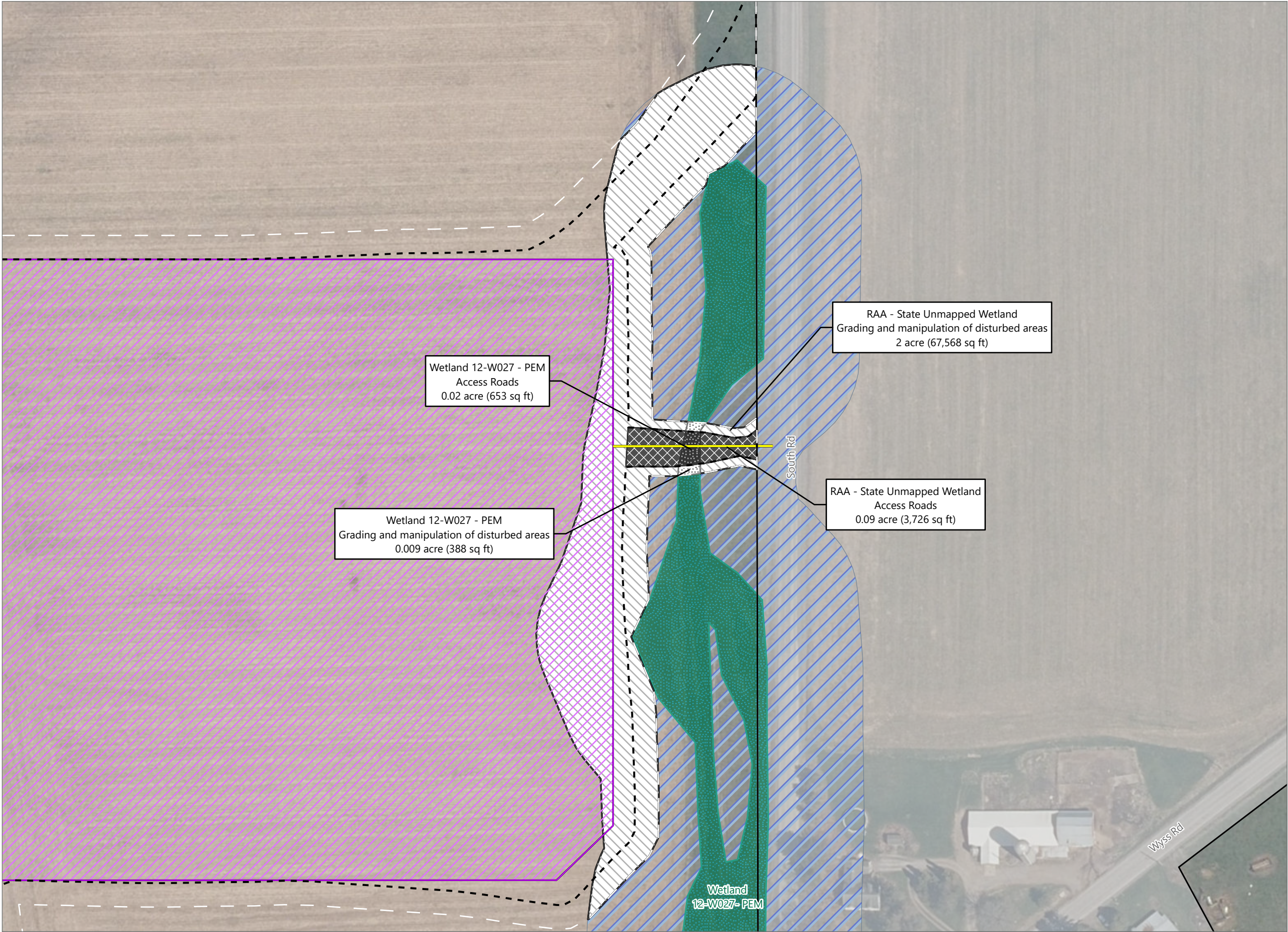
- Wetlands and Streams
- Culvert
 - Wetland Continues
 - Delineated Stream w/
State & Federal Jurisdiction
 - Delineated wetland Non-jurisdictional
 - Delineated Wetland w/
State & Federal Jurisdiction
 - State-Regulated Adjacent Area (RAA)
- State Wetland Impact
- Minor
 - Major
- State RAA Impact
- Minor
 - Major
- Facility Components
- Access Road
 - Collection Line
 - Collection Line Bore
 - Limit of Grading
 - Limit of Disturbance
 - Facility Site



Sheet 1 of 22



Prepared May 30, 2024
Basemap: NYSDOP "2022" orthoimagery map service

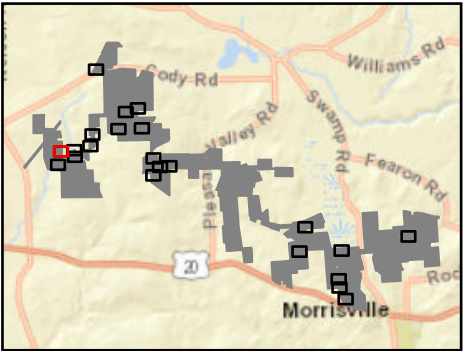


Hoffman Falls Wind

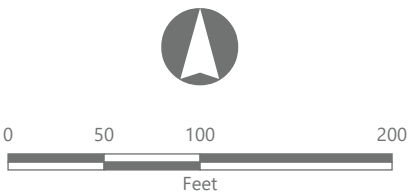
Towns of Eaton, Fenner, Nelson and
Smithfield, Madison County,
New York

Section 94-c Supplement
Matter No. 23-00038

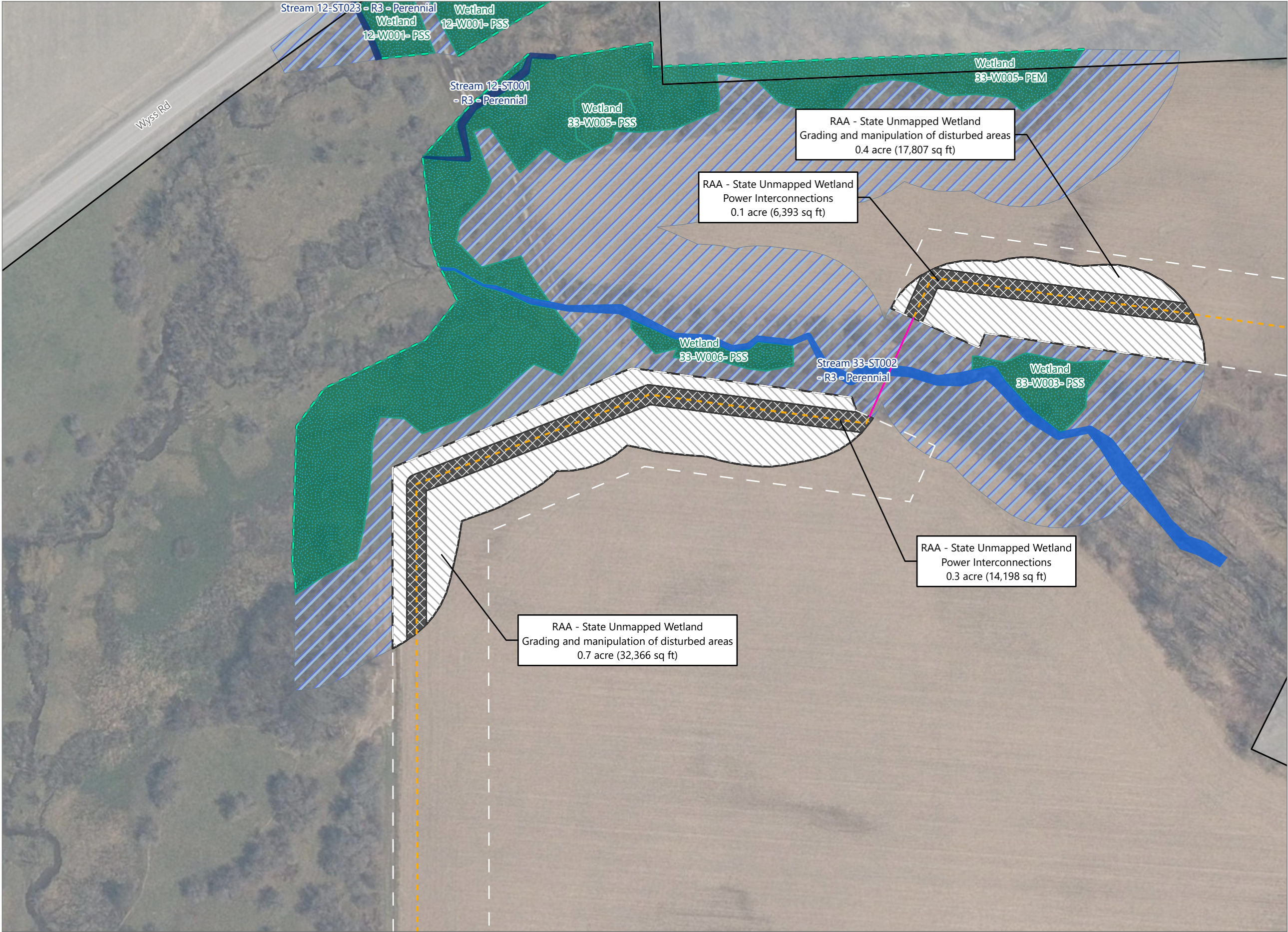
- Delineated Wetland w/
State & Federal Jurisdiction
- State-Regulated Adjacent Area (RAA)
- State Wetland Impact
 - Minor
 - Major
- State RAA Impact
 - Minor
 - Major
- Facility Components
 - Access Road
 - Laydown Yard
 - Limit of Grading
 - Limit of Disturbance
 - Facility Site



Sheet 2 of 22



Prepared May 30, 2024
Basemap: NYS DOP "2022" orthoimagery map service

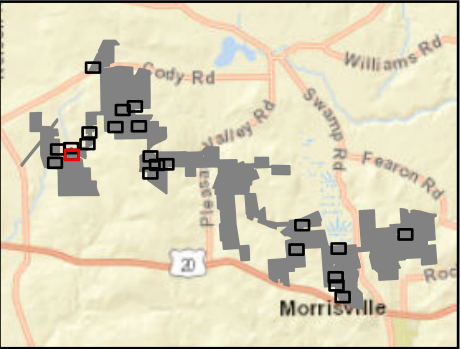


Hoffman Falls Wind

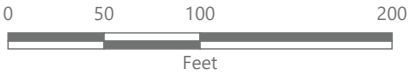
Towns of Eaton, Fenner, Nelson and
Smithfield, Madison County,
New York

**Section 94-c Supplement
Matter No. 23-00038**

- Wetlands and Streams
- Wetland Continues
 - Delineated Stream w/ Federal Jurisdiction
 - Delineated Stream w/ State & Federal Jurisdiction
 - Delineated Wetland w/ State & Federal Jurisdiction
 - State-Regulated Adjacent Area (RAA)
- State RAA Impact
- Minor
 - Major
- Facility Components
- Collection Line
 - Collection Line Bore
 - Limit of Clearing
 - Limit of Disturbance
 - Facility Site



Sheet 3 of 22



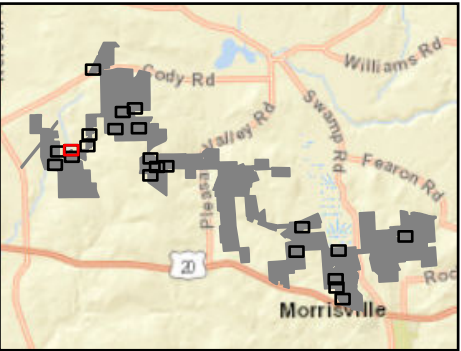
Prepared May 30, 2024
Basemap: NYS DOP "2022" orthoimagery map service

Hoffman Falls Wind

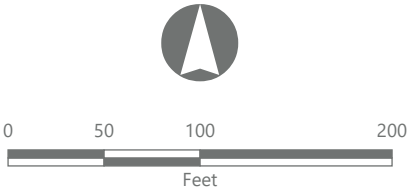
Towns of Eaton, Fenner, Nelson and
Smithfield, Madison County,
New York

Section 94-c Supplement
Matter No. 23-00038

- Wetlands and Streams
- Culvert
 - Wetland Continues
 - Delineated Stream Non-jurisdictional
 - Delineated Stream w/
Federal Jurisdiction
 - Delineated Stream w/
State & Federal Jurisdiction
 - Delineated Wetland w/
State & Federal Jurisdiction
 - State-Regulated Adjacent Area (RAA)
- State RAA Impact
- Minor
 - Major
- Facility Components
- Collection Line
 - Limit of Grading
 - Limit of Disturbance
 - Facility Site



Sheet 4 of 22



Prepared May 30, 2024
Basemap: NYSDOP "2022" orthoimagery map service

EDR



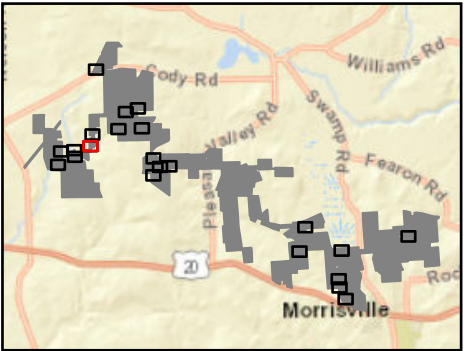


Hoffman Falls Wind

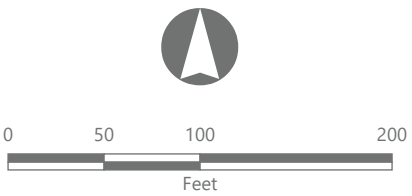
Towns of Eaton, Fenner, Nelson and
Smithfield, Madison County,
New York

Section 94-c Supplement
Matter No. 23-00038

- Wetlands and Streams
- Culvert
 - Wetland Continues
 - Delineated Stream w/
Federal Jurisdiction
 - Delineated Stream w/
State & Federal Jurisdiction
 - Delineated Wetland w/
State & Federal Jurisdiction
 - State-Regulated Adjacent Area (RAA)
- State RAA Impact
- Minor
 - Intermediate
 - Major
- Facility Components
- Collection Line
 - Collection Line Bore
 - Limit of Disturbance
 - Facility Site



Sheet 5 of 22



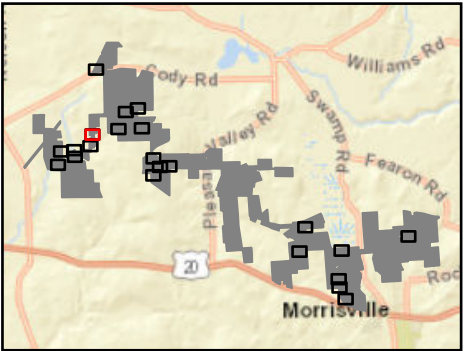
Prepared May 30, 2024
Basemap: NYS DOP "2022" orthoimagery map service

Hoffman Falls Wind

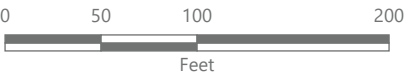
Towns of Eaton, Fenner, Nelson and
Smithfield, Madison County,
New York

Section 94-c Supplement
Matter No. 23-00038

- Wetlands and Streams
- Culvert
 - Wetland Continues
 - Delineated Wetland w/
State & Federal Jurisdiction
 - State-Regulated Adjacent Area (RAA)
- State RAA Impact
- Minor
 - Intermediate
 - Major
- Facility Components
- Collection Line
 - Collection Line Bore
 - Limit of Clearing
 - Limit of Disturbance
 - Facility Site



Sheet 6 of 22



Prepared May 30, 2024
Basemap: NYSDOP "2022" orthoimagery map service

EDR

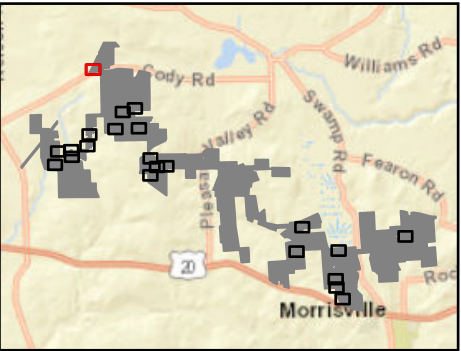


Hoffman Falls Wind

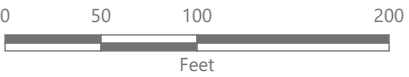
Towns of Eaton, Fenner, Nelson and
Smithfield, Madison County,
New York

Section 94-c Supplement
Matter No. 23-00038

- Wetlands and Streams
- Wetland Continues
 - Delineated Stream Non-jurisdictional
 - Delineated Stream w/ Federal Jurisdiction
 - Delineated Wetland w/ State & Federal Jurisdiction
 - State-Regulated Adjacent Area (RAA)
- State Wetland Impact
- Minor
 - Intermediate
 - Major
- State RAA Impact
- Intermediate
 - Major
- Facility Components
- Collection Line
 - Collection Substation
 - POI Substation
 - Limit of Clearing
- Facility Components
- Limit of Grading
 - Limit of Disturbance
 - Facility Site



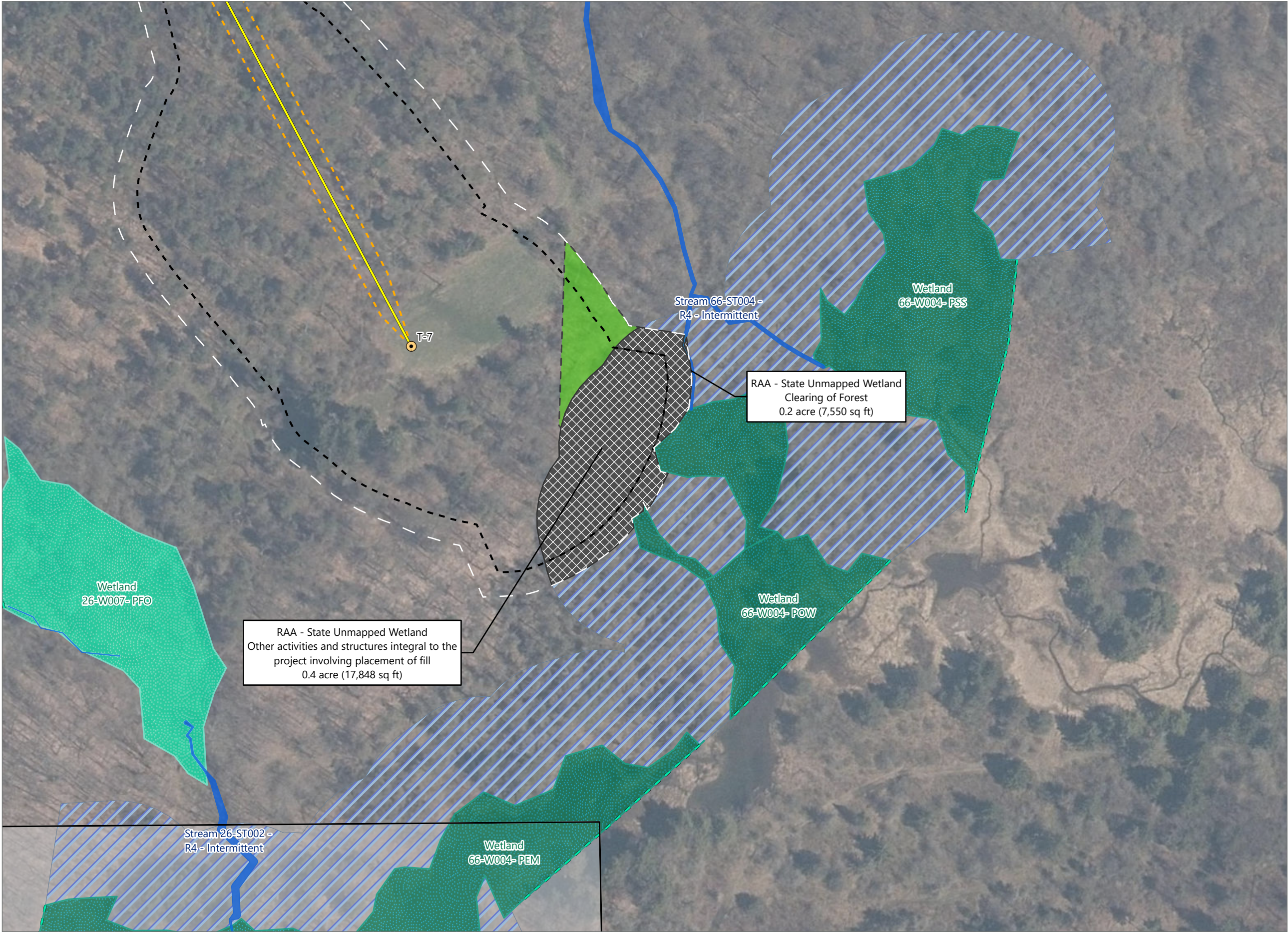
Sheet 7 of 22



Prepared May 30, 2024
Basemap: NYSDOP "2022" orthoimagery map service

EDR



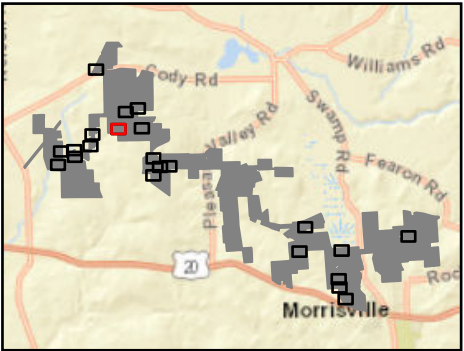


Hoffman Falls Wind

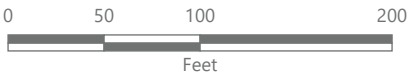
Towns of Eaton, Fenner, Nelson and
Smithfield, Madison County,
New York

Section 94-c Supplement
Matter No. 23-00038

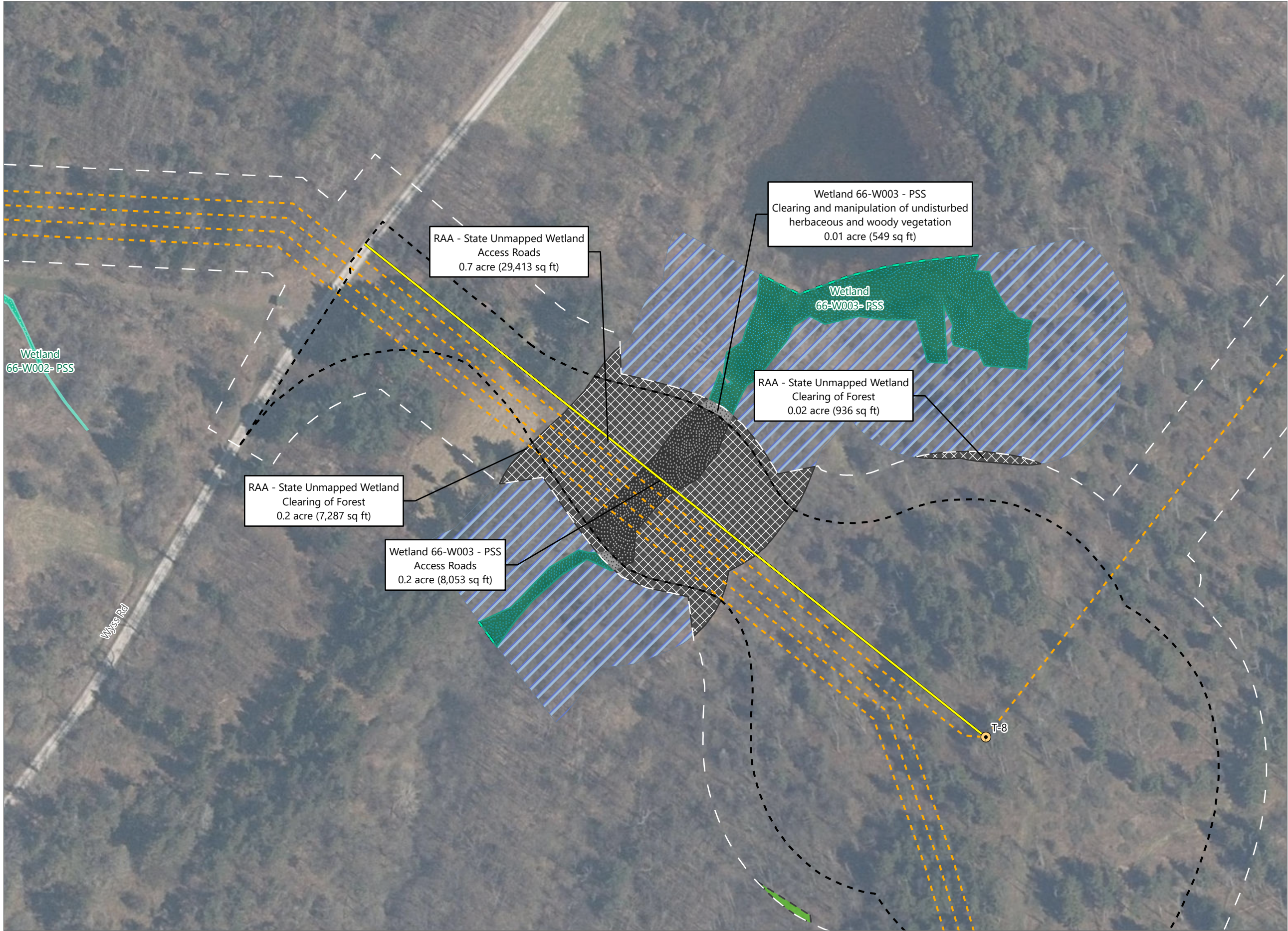
- Wetlands and Streams
- Wetland Continues
 - Delineated Stream w/ Federal Jurisdiction
 - Delineated Wetland w/ Federal Jurisdiction
 - Delineated Wetland w/ State & Federal Jurisdiction
 - State-Regulated Adjacent Area (RAA)
- State RAA Impact
- Major
- Facility Components
- Wind Turbine
 - Access Road
 - Collection Line
 - Limit of Clearing
- Facility Components
- Limit of Grading
 - Limit of Disturbance
 - Facility Site



Sheet 8 of 22



Prepared May 30, 2024
Basemap: NYSDOP "2022" orthoimagery map service

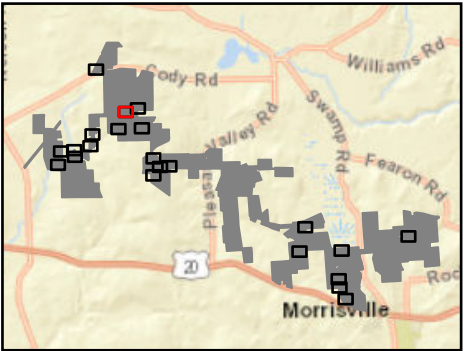


Hoffman Falls Wind

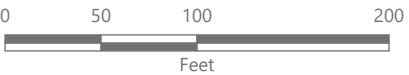
Towns of Eaton, Fenner, Nelson and
Smithfield, Madison County,
New York

**Section 94-c Supplement
Matter No. 23-00038**

- Wetlands and Streams
- Wetland Continues
 - Delineated Wetland w/
Federal Jurisdiction
 - Delineated Wetland w/
State & Federal Jurisdiction
 - State-Regulated Adjacent Area (RAA)
- State Wetland Impact
- Intermediate
 - Major
- State RAA Impact
- Major
- Facility Components
- Wind Turbine
 - Access Road
 - Collection Line
 - Limit of Clearing
- Facility Components
- Limit of Grading
 - Limit of Disturbance
 - Facility Site



Sheet 9 of 22



Prepared May 30, 2024
Basemap: NYSDOP "2022" orthoimagery map service

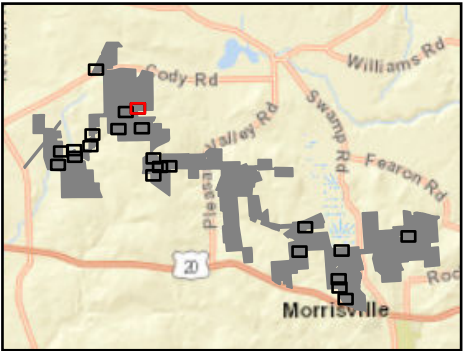


Hoffman Falls Wind

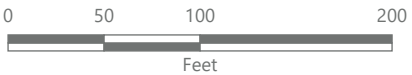
Towns of Eaton, Fenner, Nelson and Smithfield, Madison County, New York

Section 94-c Supplement
Matter No. 23-00038

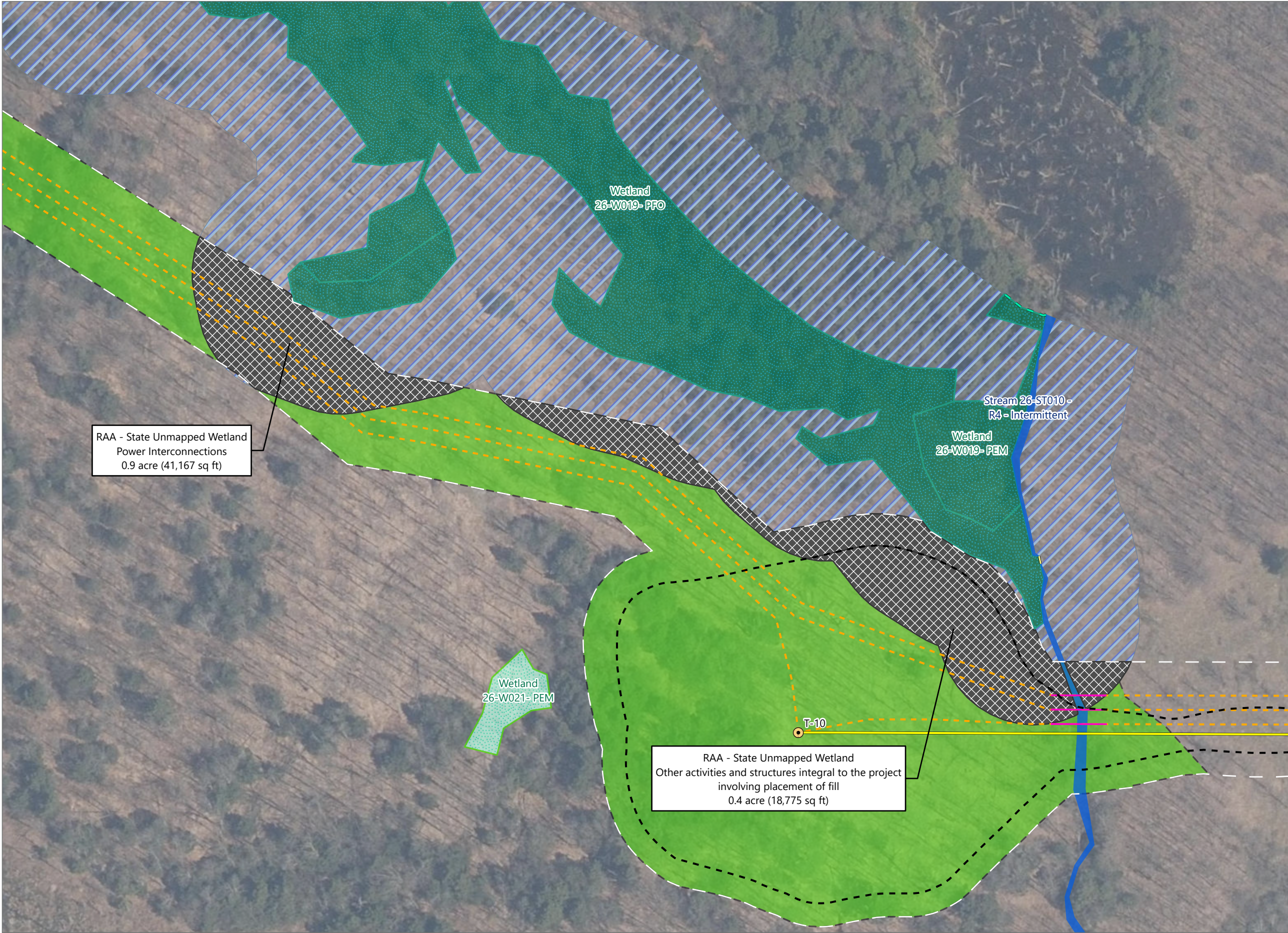
- Wetlands and Streams
- Wetland Continues
 - Delineated Stream w/ Federal Jurisdiction
 - Delineated wetland Non-jurisdictional
 - Delineated Wetland w/ State & Federal Jurisdiction
 - State-Regulated Adjacent Area (RAA)
- State Wetland Impact
- Major
- State RAA Impact
- Major
- Facility Components
- Collection Line
 - Limit of Clearing
 - Limit of Disturbance
 - Facility Site



Sheet 10 of 22



Prepared May 30, 2024
Basemap: NYSDOP "2022" orthoimagery map service

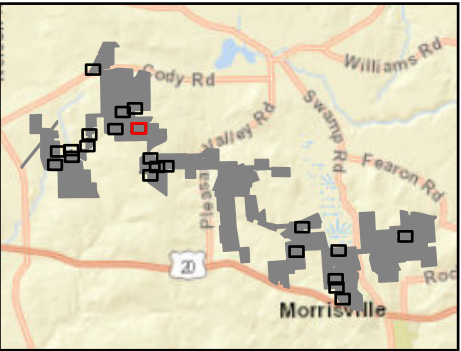


Hoffman Falls Wind

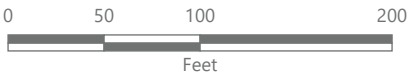
Towns of Eaton, Fenner, Nelson and
Smithfield, Madison County,
New York

Section 94-c Supplement
Matter No. 23-00038

- Wetlands and Streams
- Culvert
 - Wetland Continues
 - Delineated Stream w/ Federal Jurisdiction
 - Delineated wetland Non-jurisdictional
 - Delineated Wetland w/ State & Federal Jurisdiction
 - State-Regulated Adjacent Area (RAA)
- State RAA Impact
- Major
- Facility Components
- Wind Turbine
 - Access Road
 - Collection Line
 - Collection Line Bore
 - Limit of Clearing
- Facility Components
- Limit of Grading
 - Limit of Disturbance
 - Facility Site

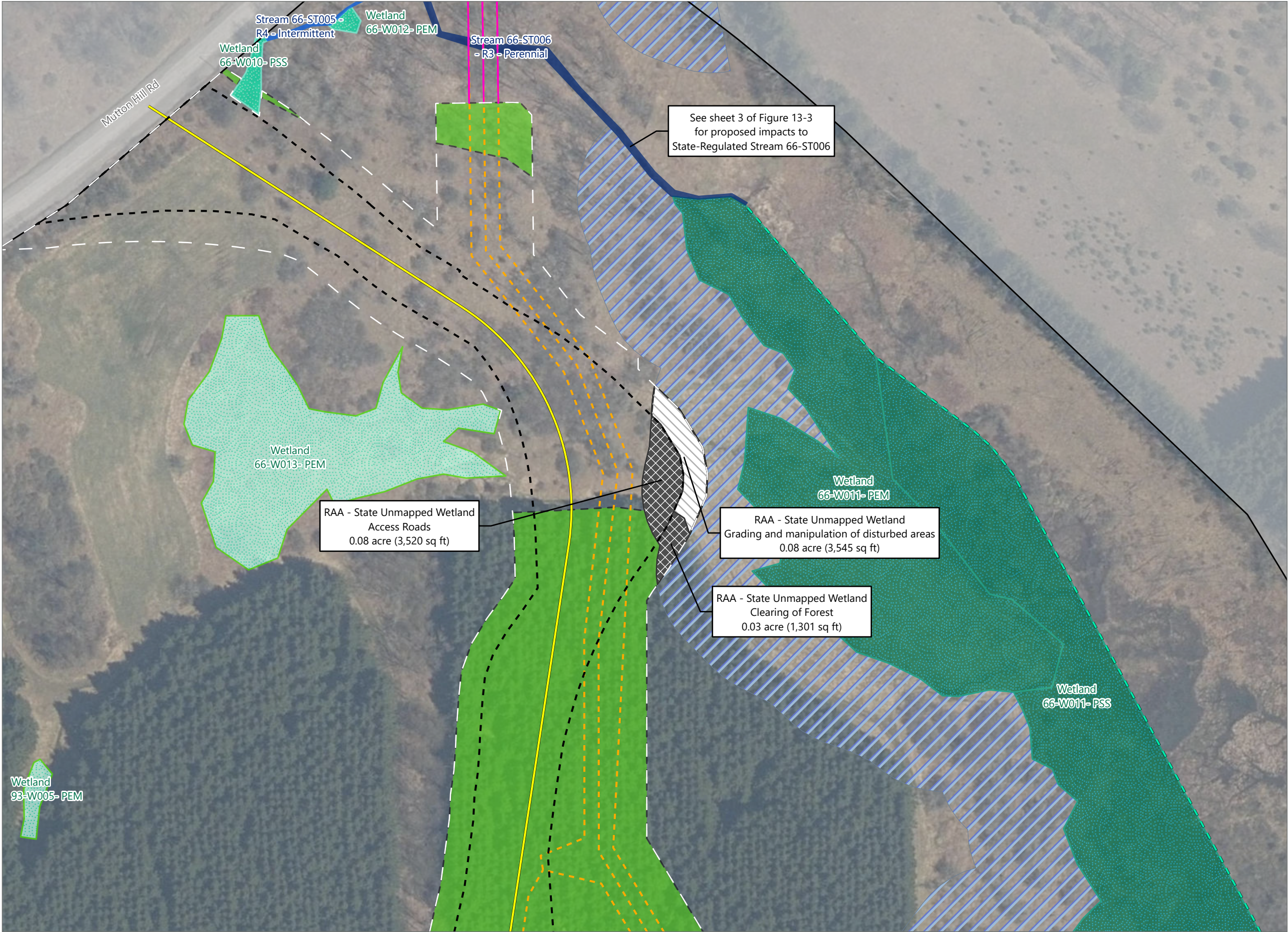


Sheet 11 of 22



Prepared May 30, 2024
Basemap: NYSDOP "2022" orthoimagery map service

Figure 14-2. Impacts to State-Regulated Wetlands - Revision 1



Hoffman Falls Wind

Towns of Eaton, Fenner, Nelson and Smithfield, Madison County, New York

Section 94-c Supplement
Matter No. 23-00038

- Wetlands and Streams
- Wetland Continues
 - Delineated Stream w/ Federal Jurisdiction
 - Delineated Stream w/ State & Federal Jurisdiction
 - Delineated wetland Non-jurisdictional
 - Delineated Wetland w/ Federal Jurisdiction
 - Delineated Wetland w/ State & Federal Jurisdiction
 - State-Regulated Adjacent Area (RAA)
- State RAA Impact
- Minor
 - Major
- Facility Components
- Access Road
 - Collection Line
 - Collection Line Bore
 - Limit of Clearing
- Facility Components
- Limit of Grading
 - Limit of Disturbance
 - Facility Site

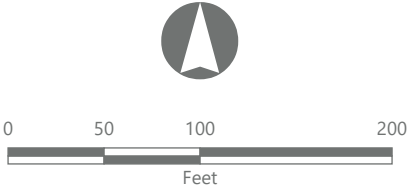
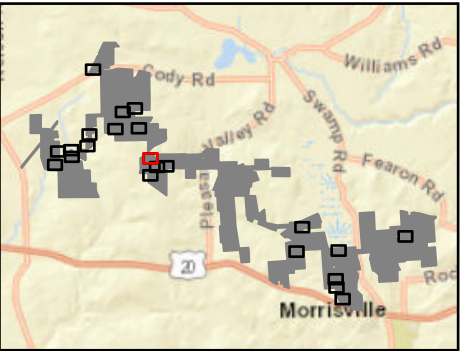
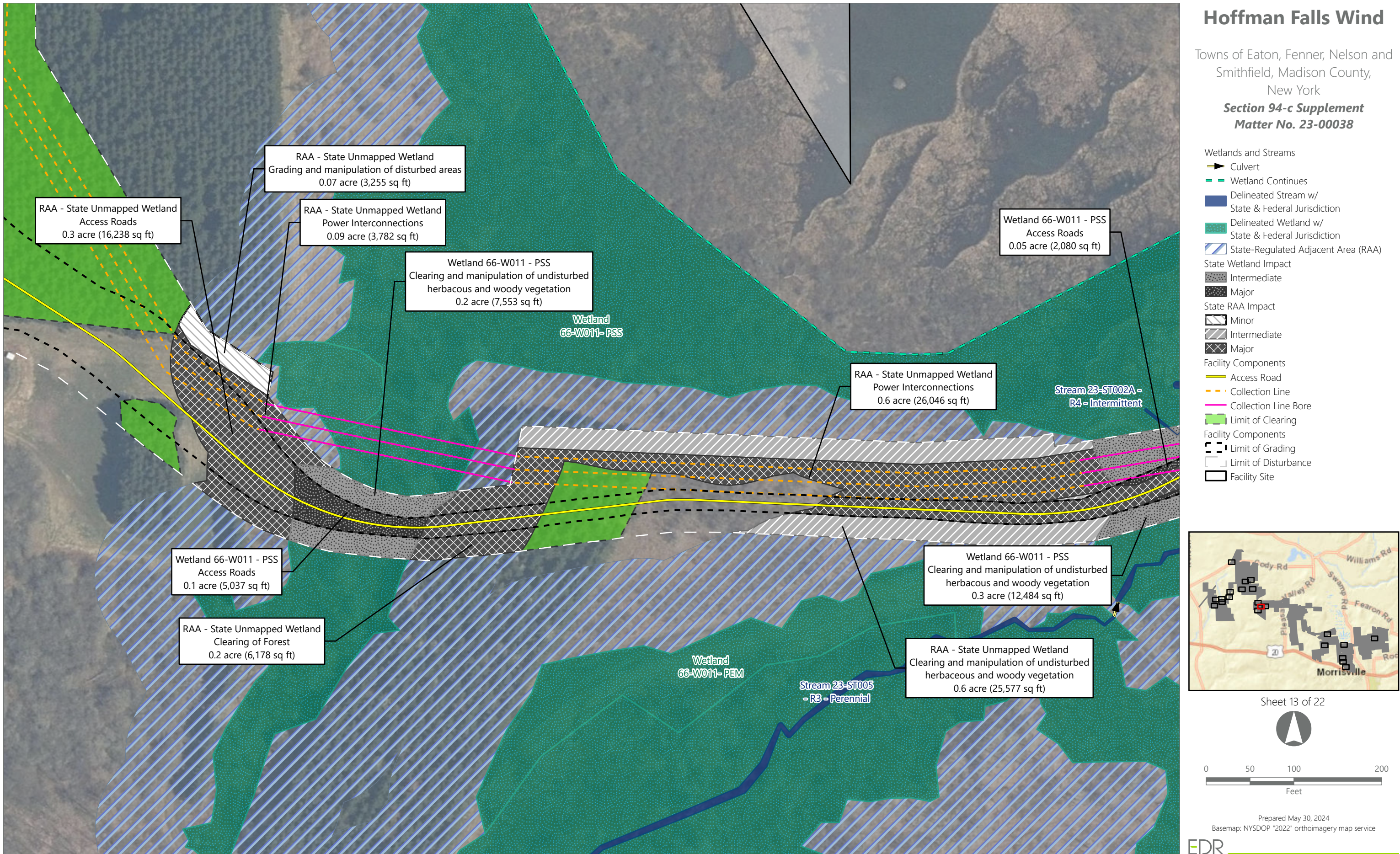
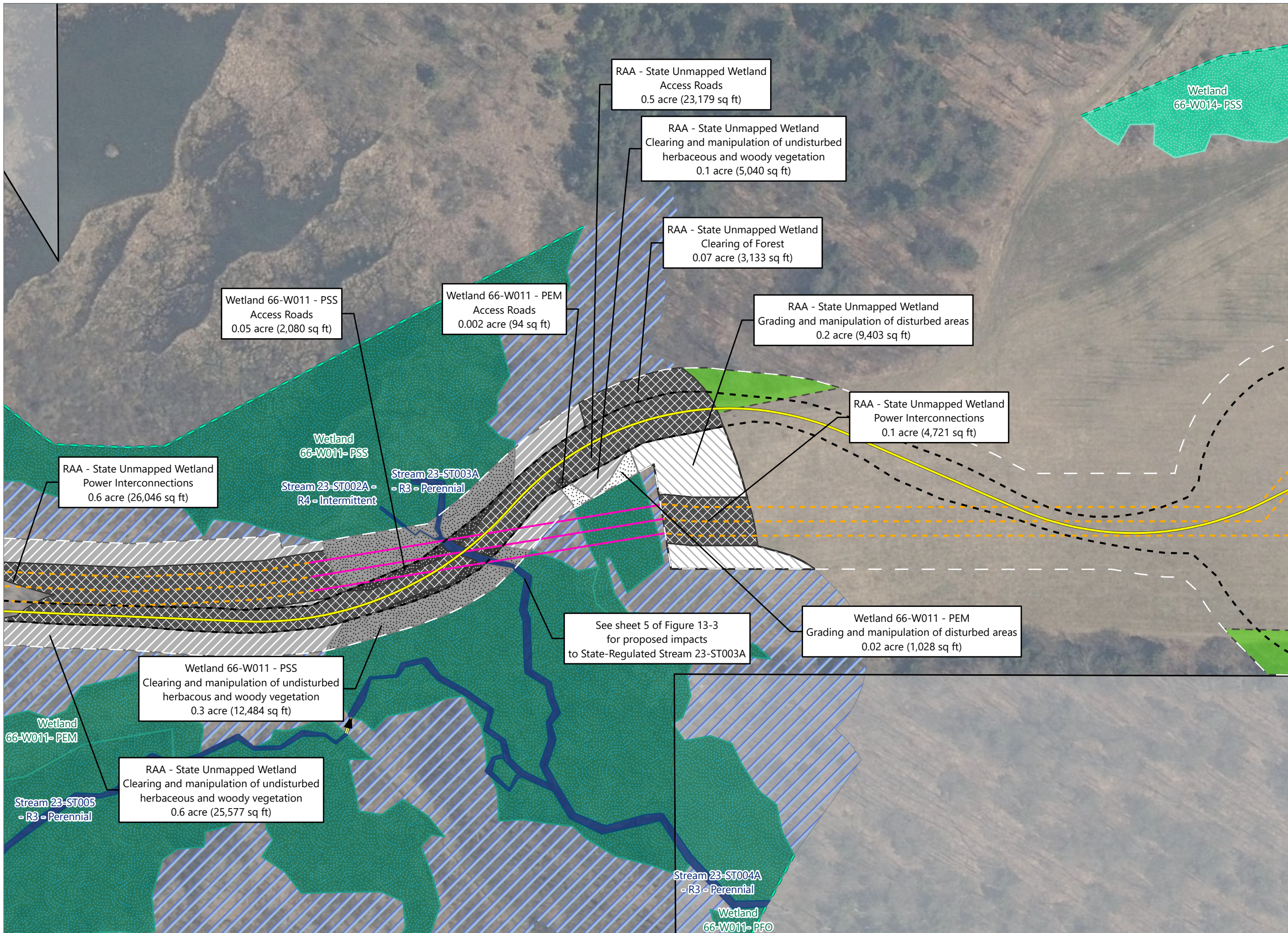


Figure 14-2. Impacts to State-Regulated Wetlands - Revision 1





Hoffman Falls Wind

Towns of Eaton, Fenner, Nelson and Smithfield, Madison County, New York

Section 94-c Supplement
Matter No. 23-00038

- Wetlands and Streams
- Culvert
 - Wetland Continues
 - Delineated Stream w/ State & Federal Jurisdiction
 - Delineated Wetland w/ Federal Jurisdiction
 - Delineated Wetland w/ State & Federal Jurisdiction
 - State-Regulated Adjacent Area (RAA)
- State Wetland Impact
- Minor
 - Intermediate
 - Major
- State RAA Impact
- Minor
 - Intermediate
 - Major
- Facility Components
- Access Road
 - Collection Line
 - Collection Line Bore
 - Limit of Clearing
- Facility Components
- Limit of Grading
 - Limit of Disturbance
 - Facility Site

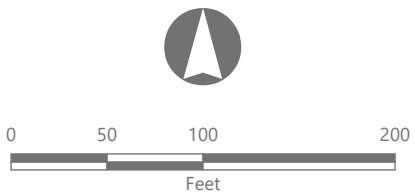
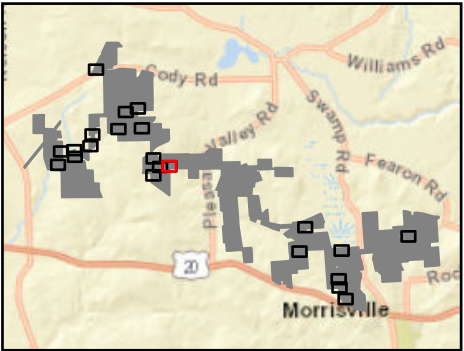
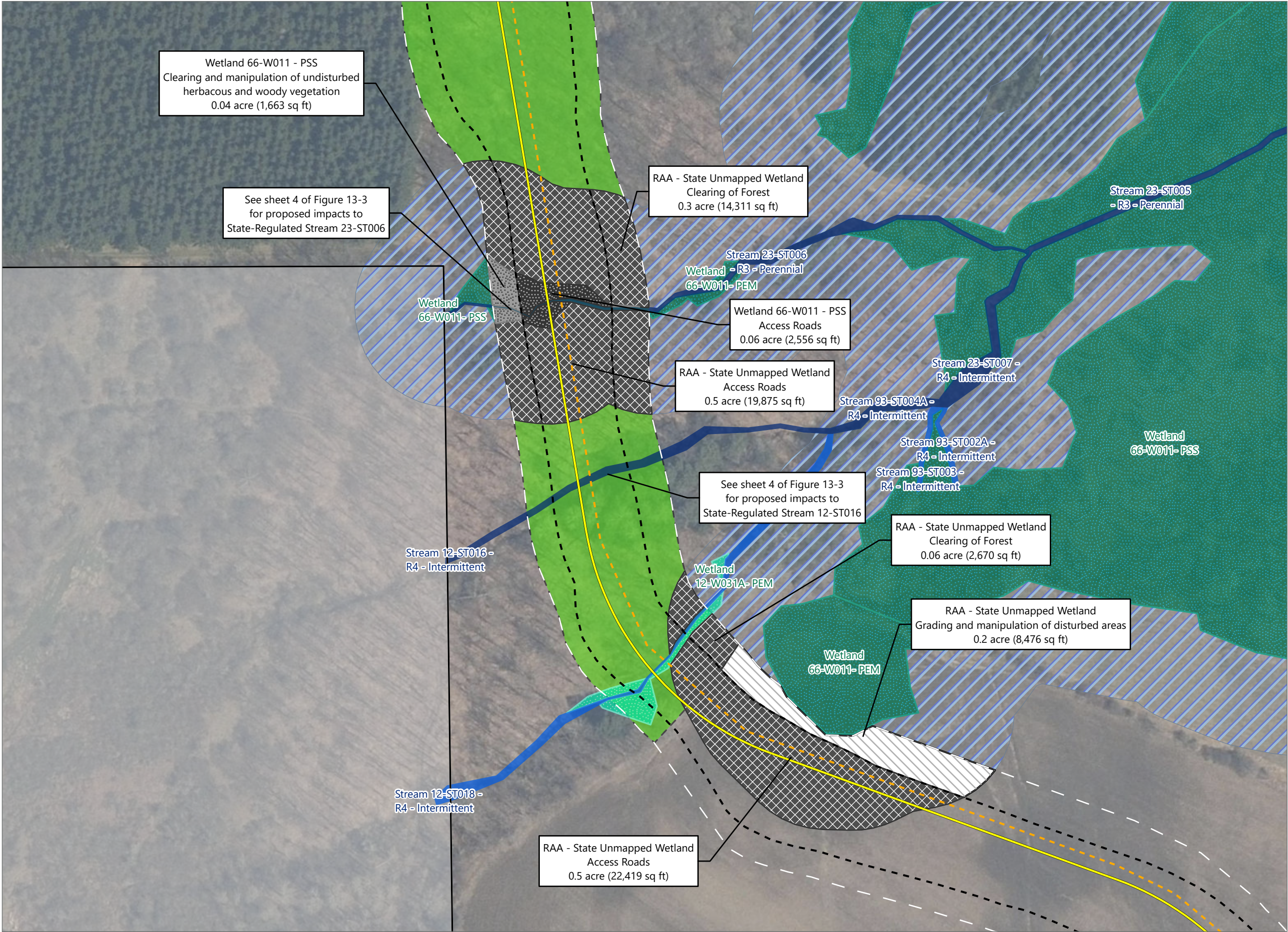


Figure 14-2. Impacts to State-Regulated Wetlands - Revision 1

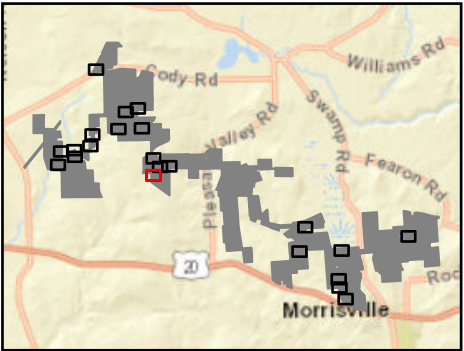


Hoffman Falls Wind

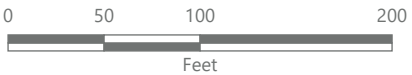
Towns of Eaton, Fenner, Nelson and
Smithfield, Madison County,
New York

Section 94-c Supplement
Matter No. 23-00038

- Wetlands and Streams
- Delineated Stream w/
Federal Jurisdiction
 - Delineated Stream w/
State & Federal Jurisdiction
 - Delineated Wetland w/
Federal Jurisdiction
 - Delineated Wetland w/
State & Federal Jurisdiction
 - State-Regulated Adjacent Area (RAA)
- State Wetland Impact
- Intermediate
 - Major
- State RAA Impact
- Minor
 - Major
- Facility Components
- Access Road
 - Collection Line
 - Limit of Clearing
- Facility Components
- Limit of Grading
 - Limit of Disturbance
 - Facility Site



Sheet 15 of 22



Prepared May 30, 2024
Basemap: NYS DOP "2022" orthoimagery map service

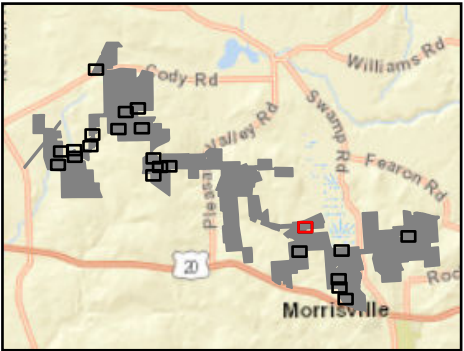


Hoffman Falls Wind

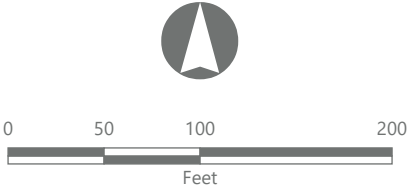
Towns of Eaton, Fenner, Nelson and
Smithfield, Madison County,
New York

**Section 94-c Supplement
Matter No. 23-00038**

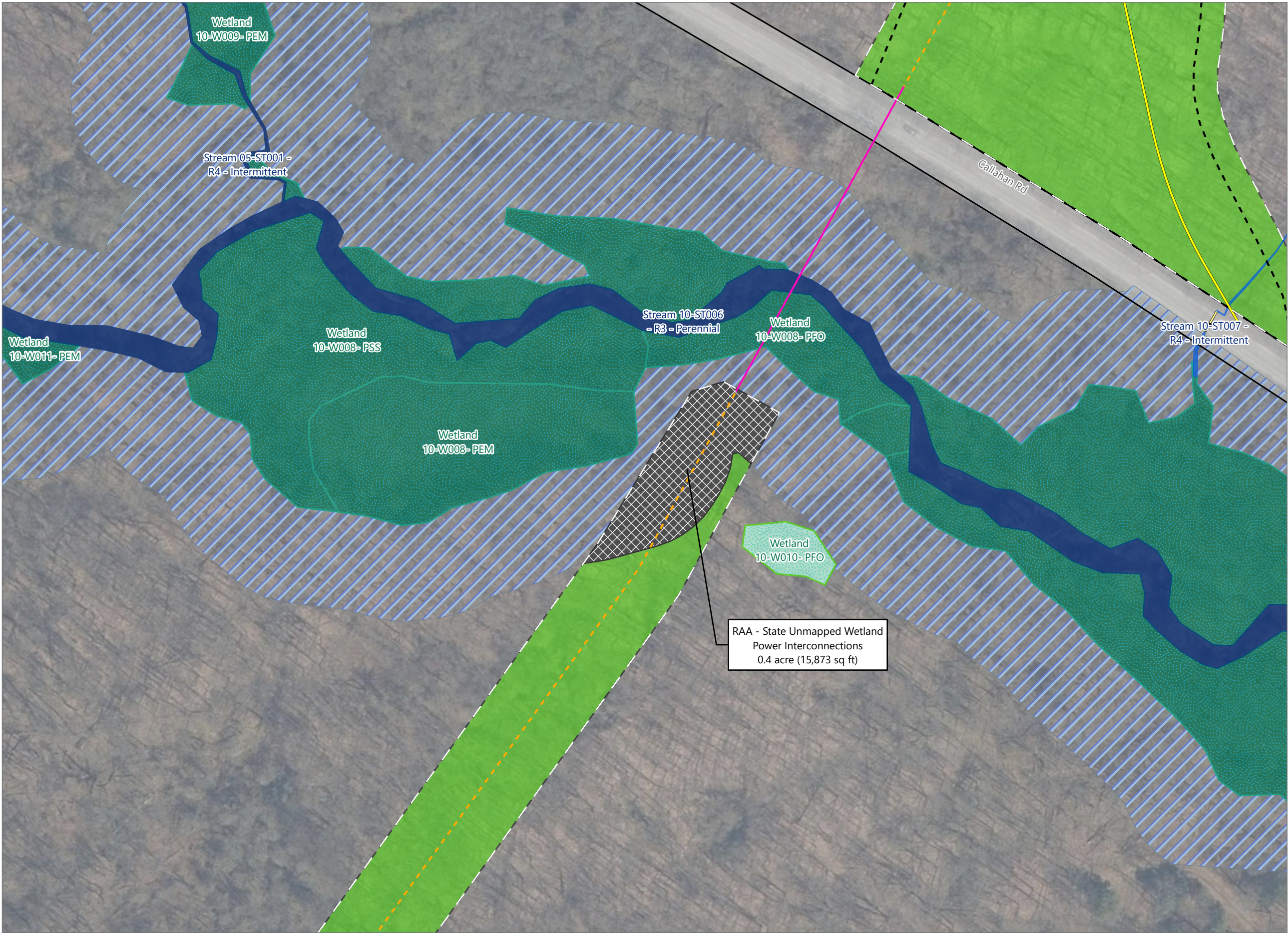
- Wetlands and Streams
- Wetland Continues
 - Delineated Stream w/ Federal Jurisdiction
 - Delineated Wetland w/ Federal Jurisdiction
 - Delineated Wetland w/ State & Federal Jurisdiction
 - State-Regulated Adjacent Area (RAA)
- State RAA Impact
- Major
- Facility Components
- Wind Turbine
 - Access Road
 - Collection Line
 - Limit of Clearing
- Facility Components
- Limit of Grading
 - Limit of Disturbance
 - Facility Site



Sheet 16 of 22



Prepared May 30, 2024
Basemap: NYSDOP "2022" orthoimagery map service

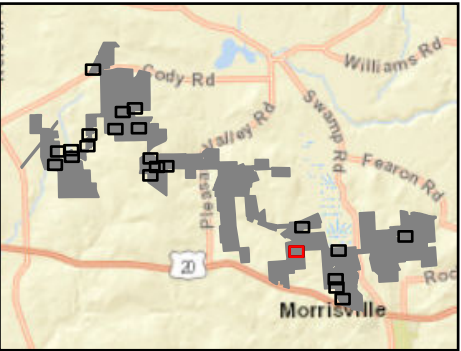


Hoffman Falls Wind

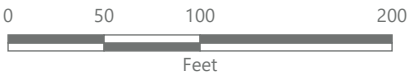
Towns of Eaton, Fenner, Nelson and
Smithfield, Madison County,
New York

Section 94-c Supplement
Matter No. 23-00038

- Wetlands and Streams
- Culvert
 - Delineated Stream w/ Federal Jurisdiction
 - Delineated Stream w/ State & Federal Jurisdiction
 - Delineated wetland Non-jurisdictional
 - Delineated Wetland w/ State & Federal Jurisdiction
 - State-Regulated Adjacent Area (RAA)
 - State RAA Impact
 - Major
- Facility Components
- Access Road
 - Collection Line
 - Collection Line Bore
 - Limit of Clearing
 - Limit of Grading
 - Limit of Disturbance
 - Facility Site



Sheet 17 of 22



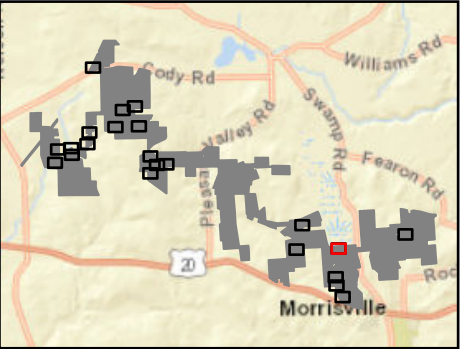
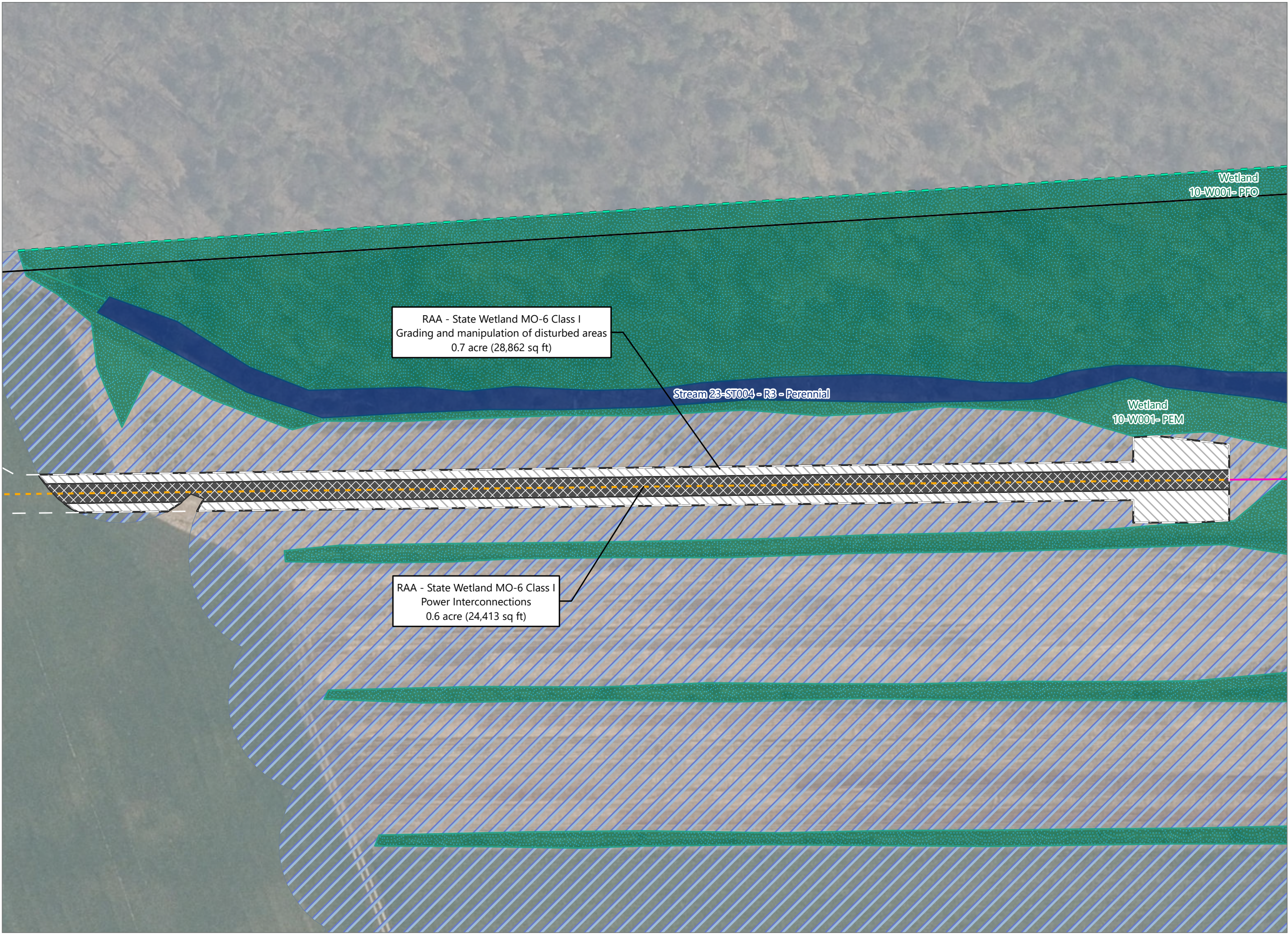
Prepared May 30, 2024
Basemap: NYSDOP "2022" orthoimagery map service

Hoffman Falls Wind

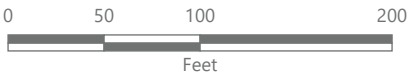
Towns of Eaton, Fenner, Nelson and
Smithfield, Madison County,
New York

Section 94-c Supplement
Matter No. 23-00038

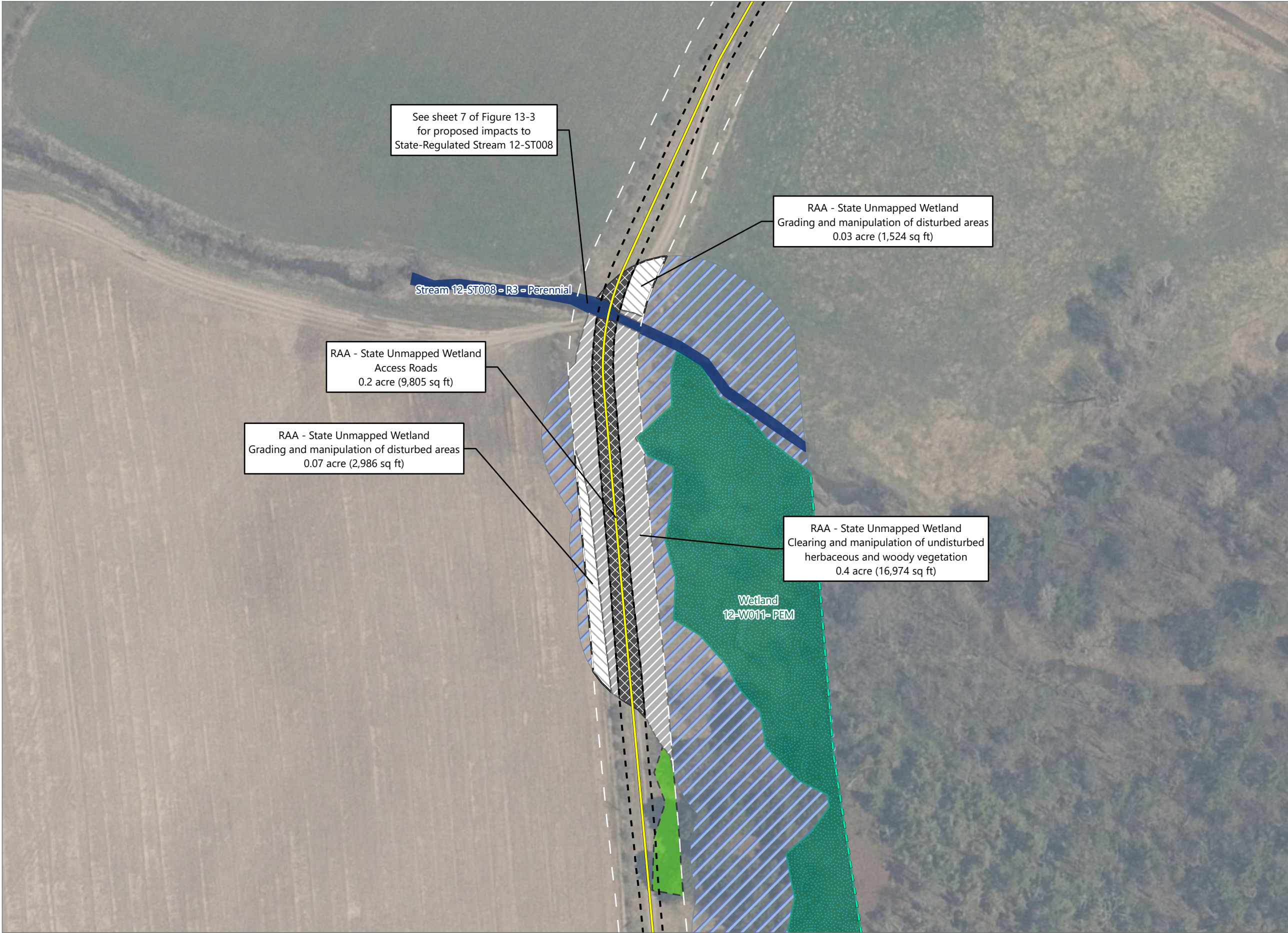
- Wetlands and Streams
- Wetland Continues
 - Delineated Stream w/
State & Federal Jurisdiction
 - Delineated Wetland w/
State & Federal Jurisdiction
 - State-Regulated Adjacent Area (RAA)
- State RAA Impact
- Minor
 - Major
- Facility Components
- Collection Line
 - Collection Line Bore
 - Limit of Disturbance
 - Facility Site



Sheet 18 of 22



Prepared May 30, 2024
Basemap: NYSDOP "2022" orthoimagery map service

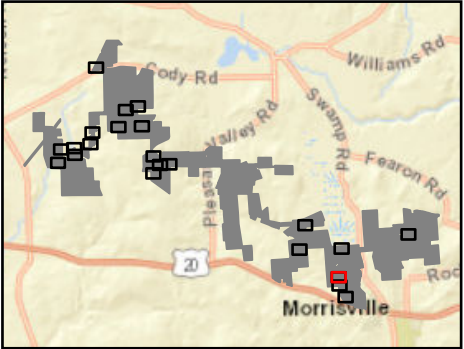


Hoffman Falls Wind

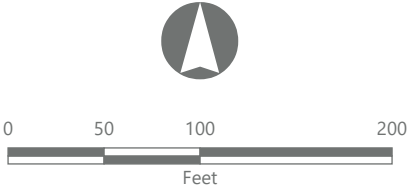
Towns of Eaton, Fenner, Nelson and
Smithfield, Madison County,
New York

Section 94-c Supplement
Matter No. 23-00038

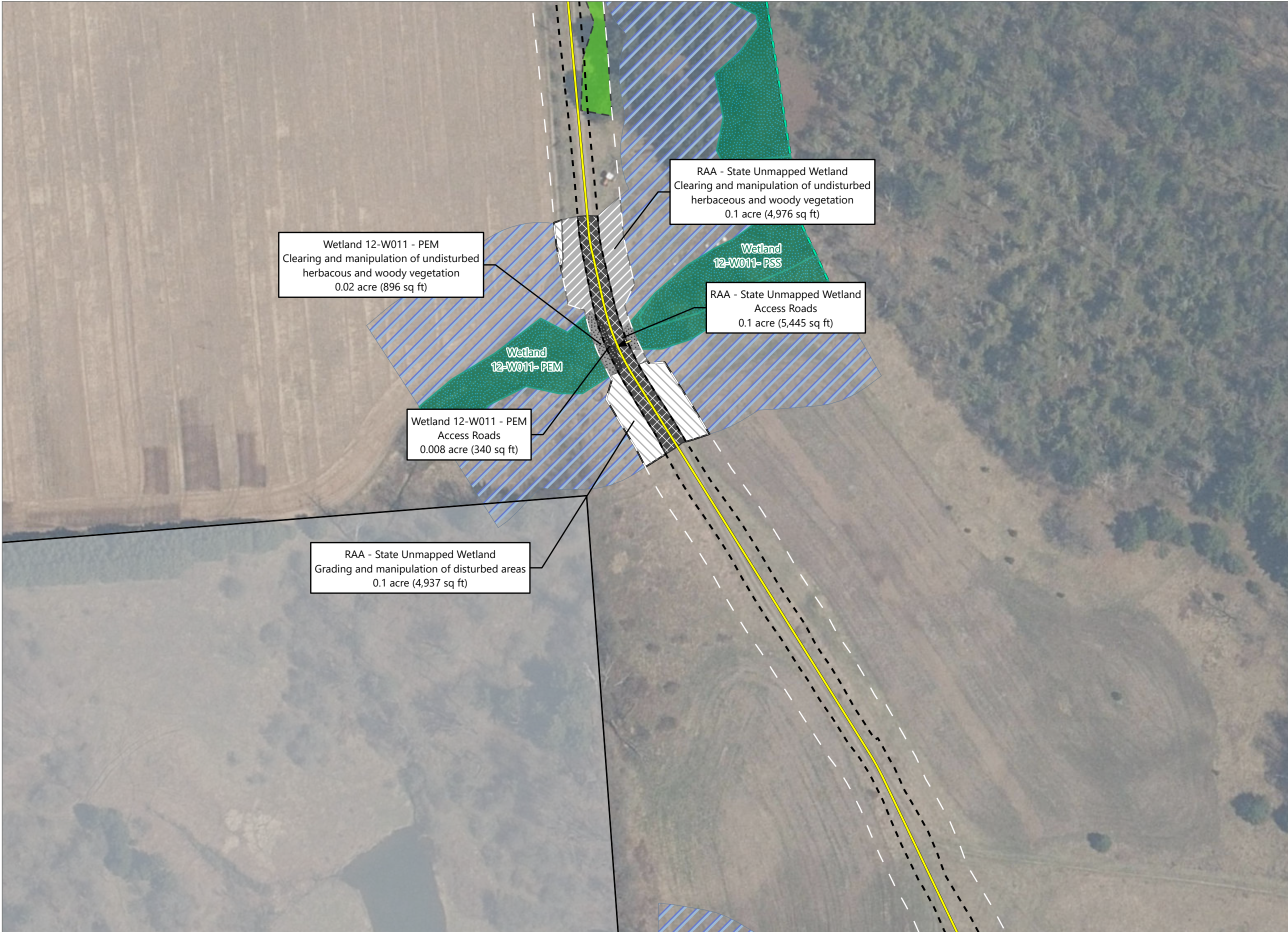
- Wetlands and Streams
- Wetland Continues
 - Delineated Stream w/
State & Federal Jurisdiction
 - Delineated Wetland w/
State & Federal Jurisdiction
 - State-Regulated Adjacent Area (RAA)
- State RAA Impact
- Minor
 - Intermediate
 - Major
- Facility Components
- Access Road
 - Limit of Clearing
- Facility Components
- Limit of Grading
 - Limit of Disturbance
 - Facility Site



Sheet 19 of 22



Prepared May 30, 2024
Basemap: NYS DOP "2022" orthoimagery map service

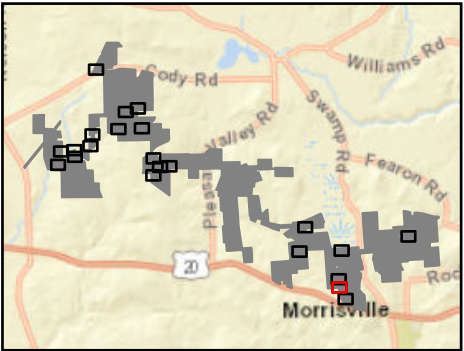


Hoffman Falls Wind

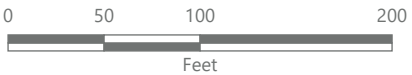
Towns of Eaton, Fenner, Nelson and
Smithfield, Madison County,
New York

Section 94-c Supplement
Matter No. 23-00038

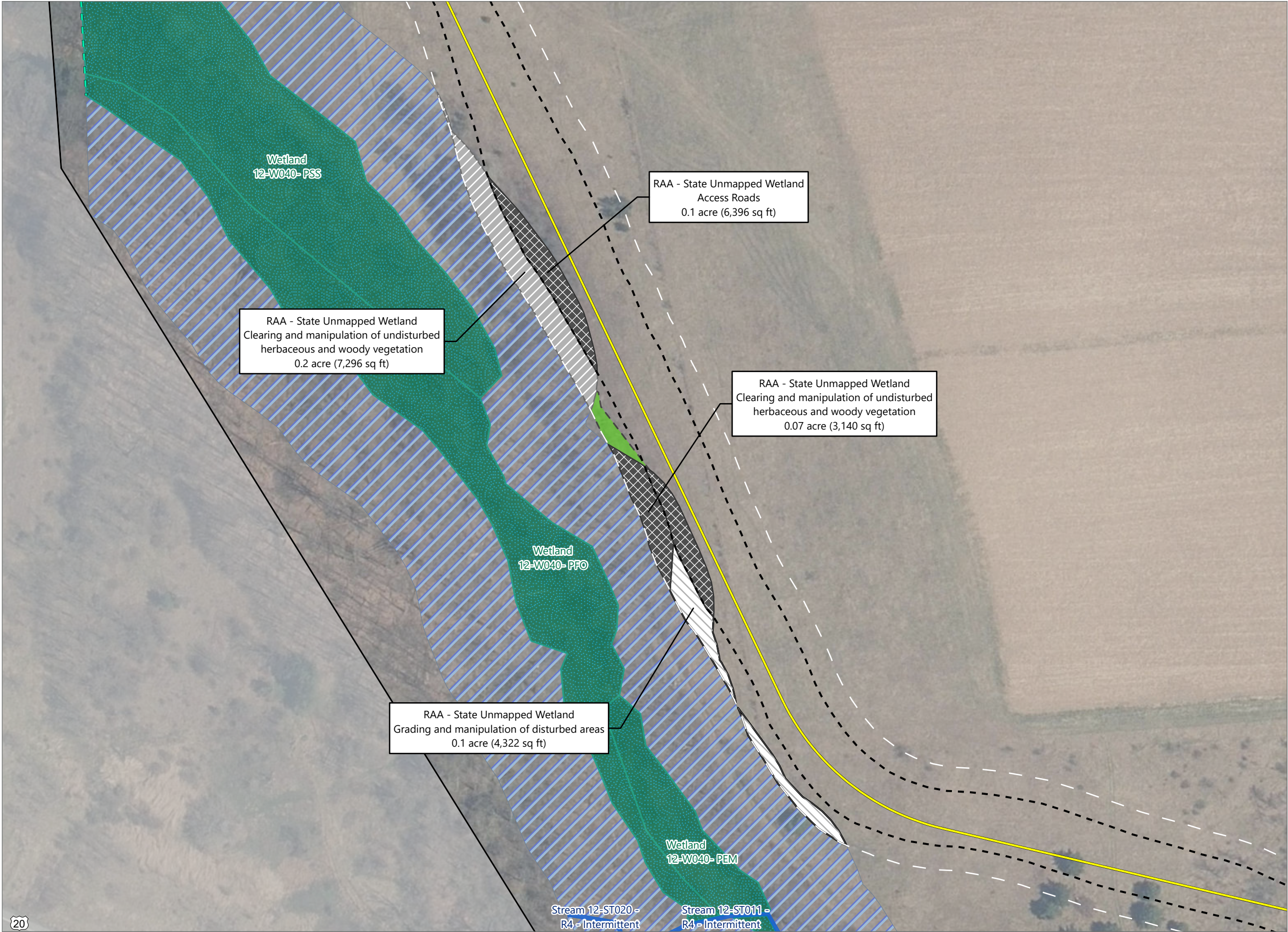
- Wetlands and Streams
- Culvert
 - Wetland Continues
 - Delineated Wetland w/
State & Federal Jurisdiction
 - State-Regulated Adjacent Area (RAA)
- State Wetland Impact
- Intermediate
 - Major
- State RAA Impact
- Minor
 - Intermediate
 - Major
- Facility Components
- Access Road
 - Limit of Clearing
- Facility Components
- Limit of Grading
 - Limit of Disturbance
 - Facility Site



Sheet 20 of 22



Prepared May 30, 2024
Basemap: NYSDOP "2022" orthoimagery map service

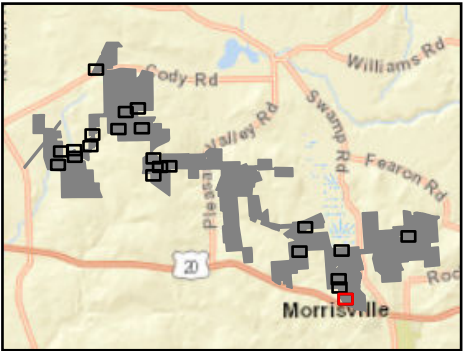


Hoffman Falls Wind

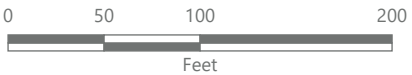
Towns of Eaton, Fenner, Nelson and Smithfield, Madison County, New York

Section 94-c Supplement
Matter No. 23-00038

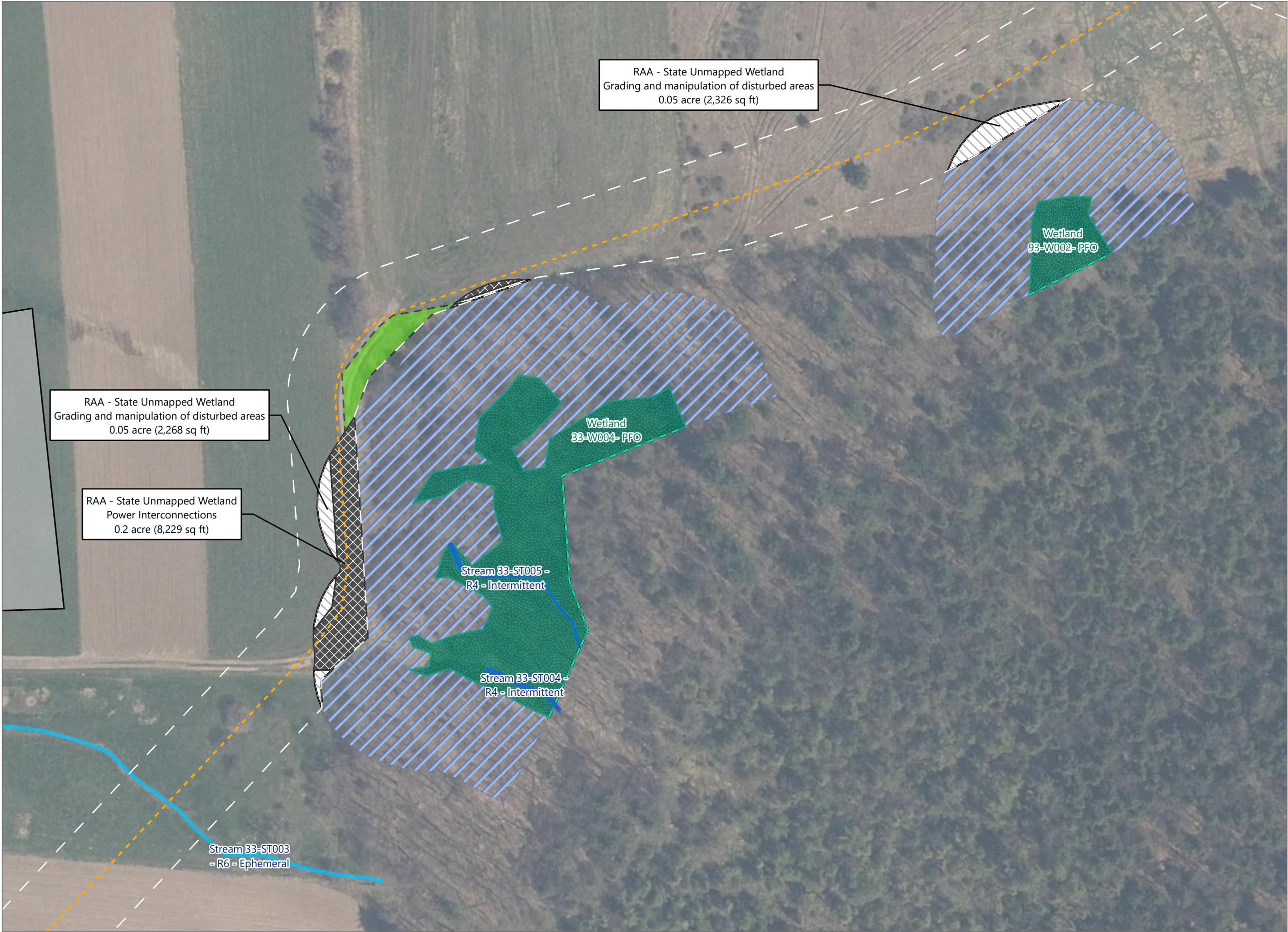
- Wetlands and Streams
- Wetland Continues
 - Delineated Stream w/ Federal Jurisdiction
 - Delineated Wetland w/ State & Federal Jurisdiction
 - State-Regulated Adjacent Area (RAA)
- State RAA Impact
- Minor
 - Intermediate
 - Major
- Facility Components
- Access Road
 - Limit of Clearing
 - Limit of Grading
 - Limit of Disturbance
 - Facility Site



Sheet 21 of 22



Prepared May 30, 2024
Basemap: NYS DOP "2022" orthoimagery map service

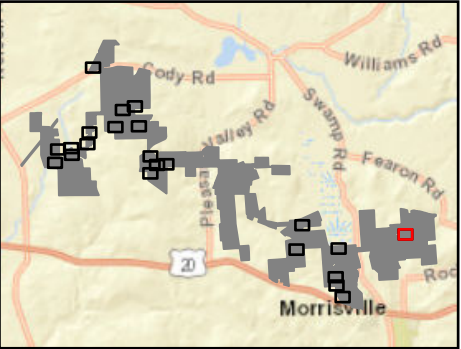


Hoffman Falls Wind

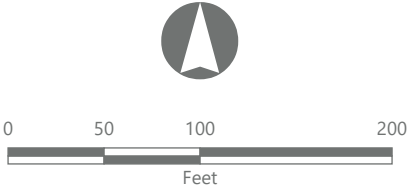
Towns of Eaton, Fenner, Nelson and
Smithfield, Madison County,
New York

**Section 94-c Supplement
Matter No. 23-00038**

- Wetlands and Streams
- Wetland Continues
 - Delineated Stream Non-jurisdictional
 - Delineated Stream w/ Federal Jurisdiction
 - Delineated Wetland w/ State & Federal Jurisdiction
 - State-Regulated Adjacent Area (RAA)
- State RAA Impact
- Minor
 - Major
- Facility Components
- Collection Line
 - Limit of Clearing
 - Limit of Disturbance
 - Facility Site



Sheet 22 of 22



Prepared May 30, 2024
Basemap: NYSDOP "2022" orthoimagery map service