



Note: Printed at actual size, the resulting simulation image is 15 inches wide by 10 inches high. At this size and focal length, the simulation should be viewed from a distance 21 inches from the eye of the viewer.

WIREFRAME RENDERING

0 1in 2in
This scale is designed to insure the simulation images are printed at the intended size.

VIEWPOINT 62
US Route 20

Hoffman Falls Wind Project
Towns of Eaton, Fenner, Nelson, and Smithfield, Madison County, New York





Note: The image above is a panorama photograph taken from Lorenzo State Historic Site in the Town of Cazenovia panning clockwise from northeast (left) to southeast (right). The green rectangle represents the extent of the simulated photograph.

VIEWPOINT 63

Lorenzo State Historic Site

VIEWPOINT INFORMATION

Location: Lorenzo State Historic Site

Town: Cazenovia

County: Madison

Latitude: 42.92102° N

Longitude: 75.86273° W

LOCATION INFORMATION

Distance Zone Represented in View: Background

Viewer Distance*: 4.9 miles

Landscape Similarity Zone: Agricultural/Rural
Residential

Viewer/User Group(s): Local Residents and
Tourist/Recreation Users

Visually Sensitive Resource(s): Lorenzo State Historic Site, Erie Canalway National Heritage Corridor, Lorenzo State Historic Site, Cazenovia Village Historic District, Lorenzo, Rippleton Schoolhouse, Village of Cazenovia

PHOTOGRAPH INFORMATION

Date: August 31, 2023

Time: 5:50 PM

Camera: Canon EOS 5D Mark IV

Resolution: 24 Megapixels

Lens Focal Length (35mm equivalent): 50 mm

Camera Elevation: 1,239 feet

Field of View: 39 degrees

Direction of View: East

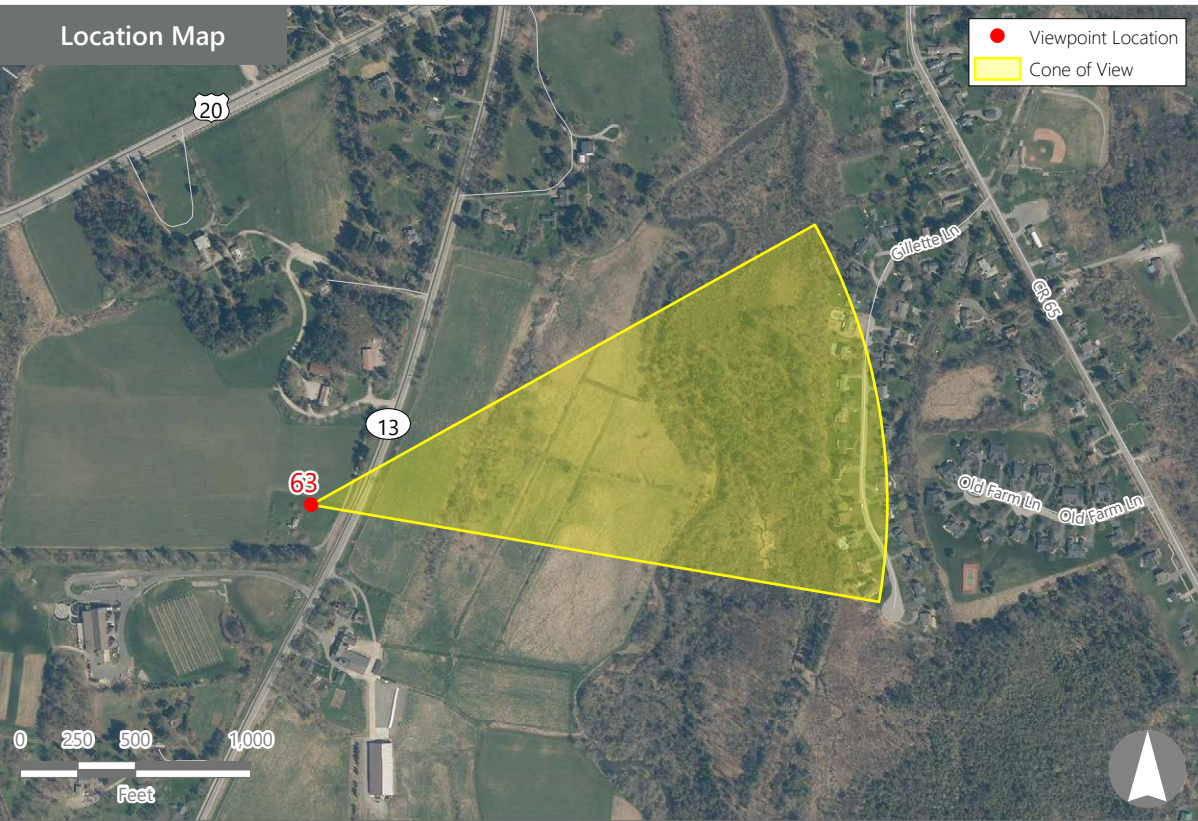
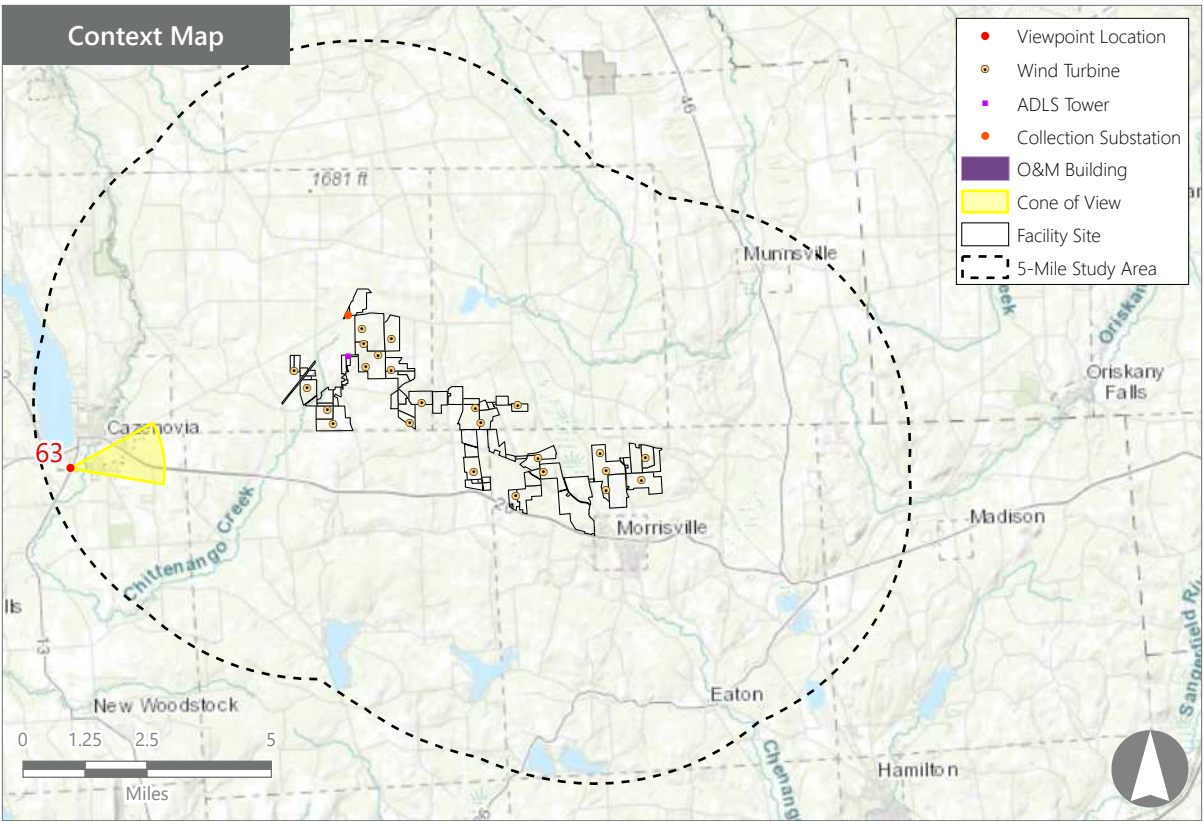
Printed Size: 10" x 15"

Viewing Distance:** 21"

NOTES

*Distance as measured from the viewpoint to the closest wind turbine generator within the simulated photograph's field of view

**The simulation is at the correct perspective when printed on an 11 inch by 17 inch sheet at full scale, and viewed approximately 21 inches from the eye of the viewer.



Hoffman Falls Wind Project

Towns of Eaton, Fenner, Nelson, and Smithfield, Madison County, New York

Visual Impact Assessment
Appendix 8-A

Viewpoint Sensitivity¹:

Scenic Quality:

- ☒ Low
- ☒ Moderate
- ☐ High

Viewer Exposure

Frequency:

- ☐ Rare
- ☐ Occasional
- ☒ Regular/Repeated

Duration of View:

- ☒ Short/Brief/Fleeting
- ☐ Moderate
- ☒ Long

¹Viewpoint Sensitivity information is gathered from rating panel results. Scenic Quality is an average based on Low = 1, Moderate = 2, High = 3. Viewer Exposure reflects all those selected by the review panel.

Contrast Rating Scores²:

Component	Score	Contrast Rating
	Install	
Landform	0.5	Insignificant/Minimal
Vegetation	0.5	Insignificant/Minimal
Land Use	0.5	Insignificant/Minimal
Water	N/A	N/A
Sky	0.7	Insignificant/Minimal
Viewer Activity	0.7	Insignificant/Minimal
AVERAGE	0.6	Insignificant/Minimal

² Contrast Rating Scale: 0.0 - 0.2 (Insignificant), 0.3 – 0.7 (Insignificant/Minimal), 0.8 – 1.2 (Minimal), 1.3 – 1.7 (Minimal/Moderate), 1.8 - 2.2 (Moderate), 2.3 – 2.7 (Moderate/Appreciable), 2.8 – 3.2 (Appreciable) 3.3 – 3.7 Appreciable/Strong), 3.8 – 4.0 (Strong).

Contrast Rating - Lowest and Highest Scores:

Post - Install		
Component	Score	
	Low	High
Landform	0.0	1.0
Vegetation	0.0	1.0
Land Use	0.0	1.0
Water	NA	NA
Sky	0.0	1.5
Viewer Activity	0.0	1.5

Existing View



Proposed View (Post Installation)



Existing View

Viewpoint 63 is located at the Lorenzo State Historic Site in the Town of Cazenovia, approximately 4.9 miles from the nearest proposed wind turbine that would be visible in the selected photo's field of view. This viewpoint occurs in the Agricultural/Rural Residential LSZ and typical viewers at this location would be local residents and tourists visiting this historic site. In the selected view to the east, there are clear horizontal divisions between the foreground and the background. The foreground includes a broad expanse of green mown lawn associated with the historic site. The middle ground is traversed by a paved road bordered on the near side by a band of unmowed herbaceous vegetation and a gravel pathway. Overhead electrical lines also run parallel to the road, extend across the full width of the view, and extend above the horizon line. A couple of electrical poles and a large tree adjacent to the road draw the attention of the viewer. Beyond the road, the landscape descends where thick and verdant forest obscure views of the landscape until a line of low hills rise in the background. The distant hills are completely wooded save for a large white building that is visible below the horizon. The sky above the horizon line is clear and blue. The rating panel indicated that this view has relatively low scenic quality.

Proposed View

With the proposed Project in place, a few turbines are visible above the horizon line but are heavily obscured by the trees and the overhead electrical lines in the middle ground. Their distance and white color against the blue sky limit the perceptibility of the turbines, and even where fully visible, they are lost amongst the clutter of the existing overhead lines. In the selected view, the electrical lines, poles, and middle ground tree remain the strong visual focus and draw the eye away from the horizon and the proposed Project. The turbines do not alter the character of the existing view, and according to the rating panel, scenic quality of this view with the Project in place and remains consistent with the exiting view.

Hoffman Falls Wind Project

Towns of Eaton, Fenner, Nelson, and Smithfield, Madison County, New York

EXISTING VIEW



Note: Printed at actual size, the existing view image is 15 inches wide by 10 inches high. At this size and focal length, the existing view image should be viewed from a distance 21 inches from the eye of the viewer.



VIEWPOINT 63
Lorenzo State Historic Site

Hoffman Falls Wind Project
Towns of Eaton, Fenner, Nelson, and Smithfield, Madison County, New York



PHOTOSIMULATION



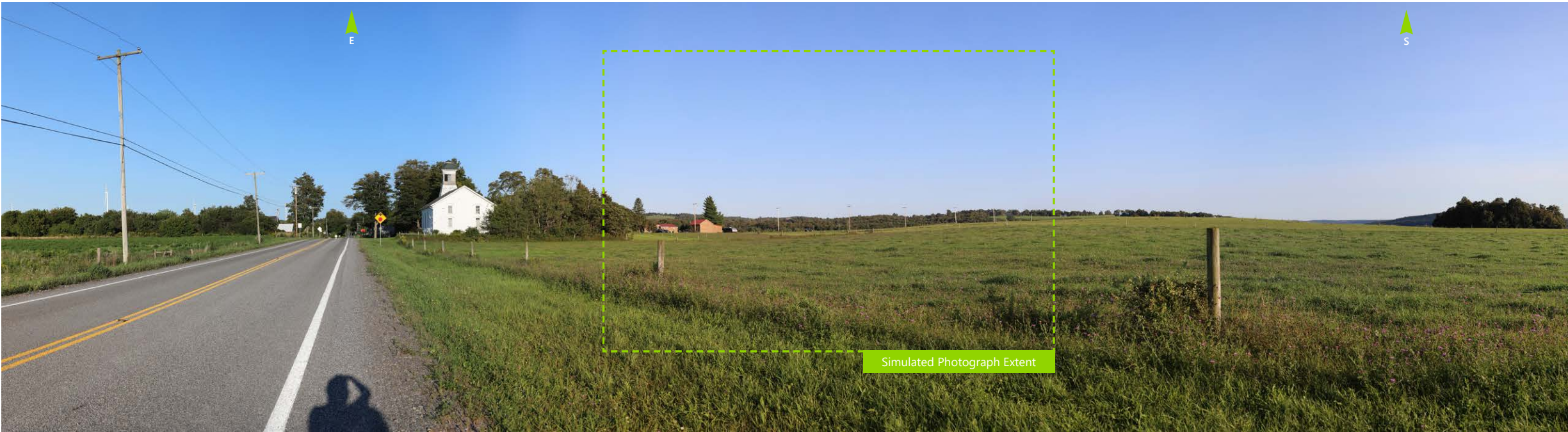
Note: Printed at actual size, the resulting simulation image is 15 inches wide by 10 inches high. At this size and focal length, the simulation should be viewed from a distance 21 inches from the eye of the viewer.



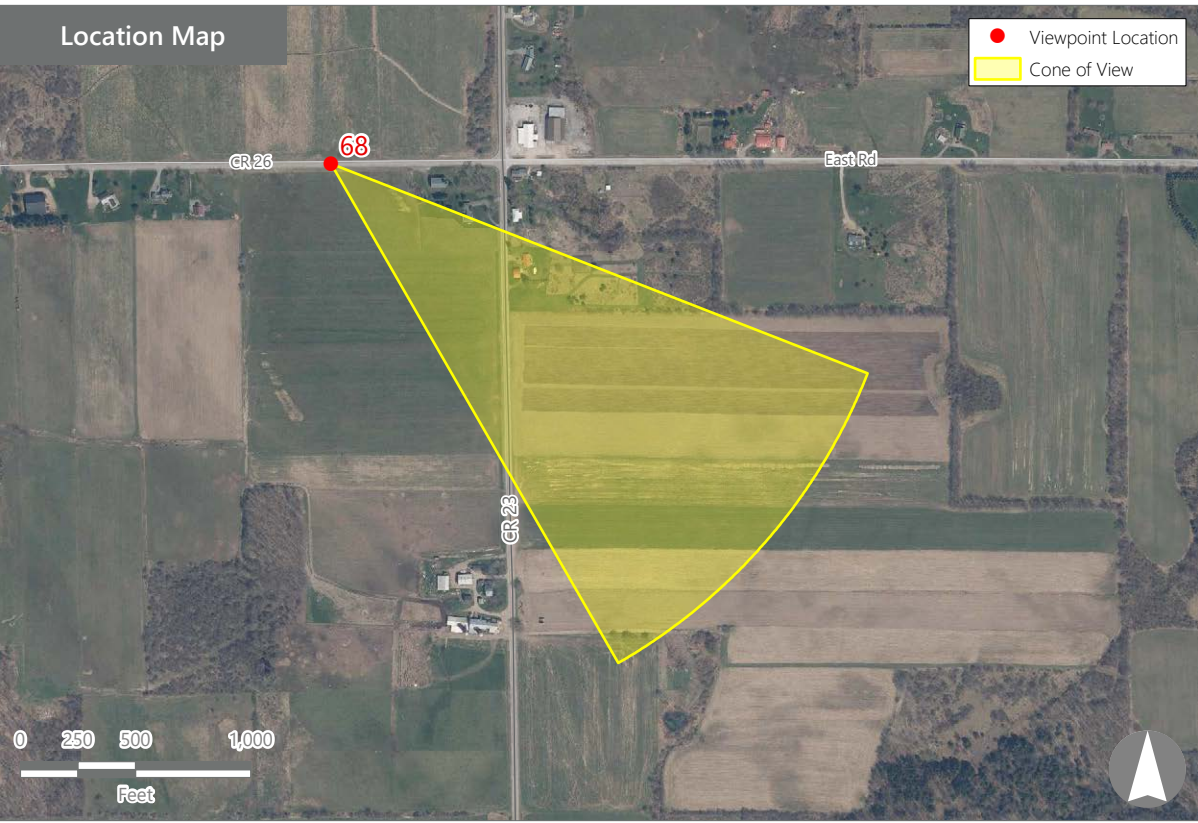
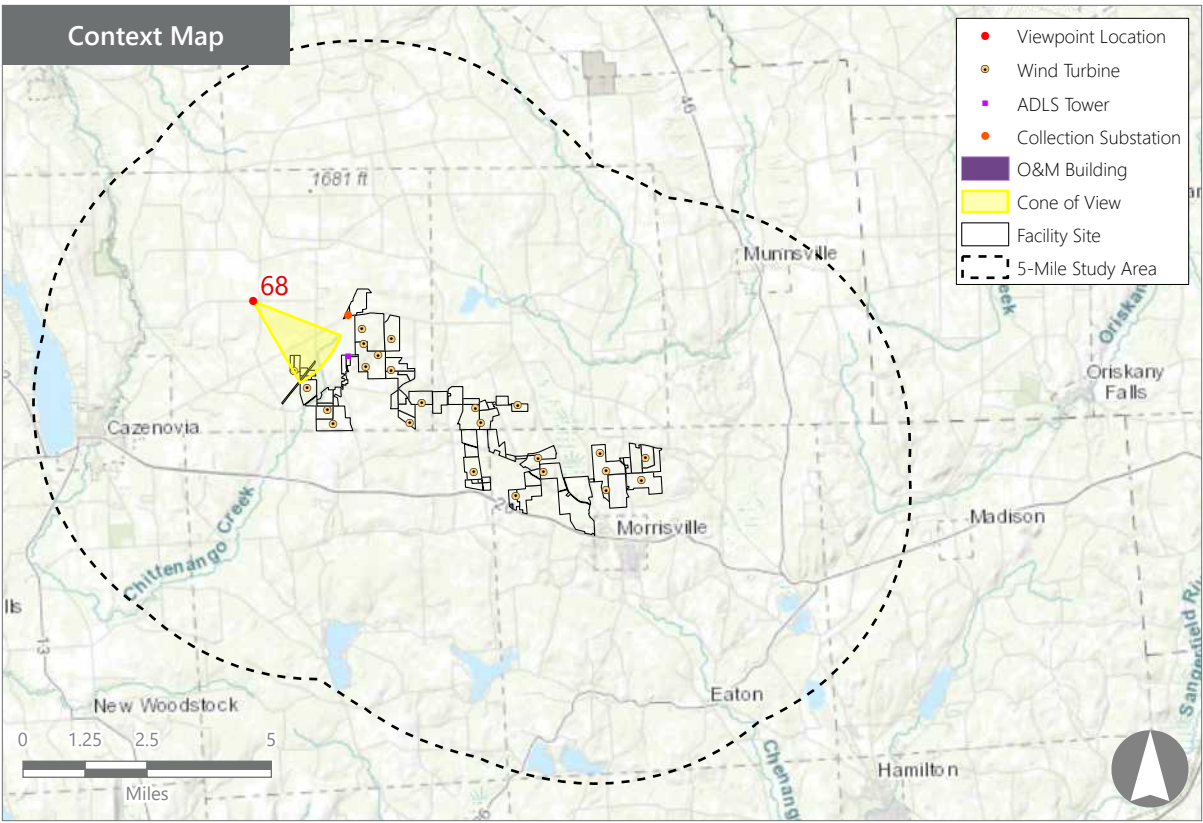
VIEWPOINT 63
Lorenzo State Historic Site

Hoffman Falls Wind Project
Towns of Eaton, Fenner, Nelson, and Smithfield, Madison County, New York





Note: The image above is a panorama photograph taken from Bingley Road in the Town of Fenner panning clockwise from northeast (left) to south (right). The green rectangle represents the extent of the simulated photograph.



VIEWPOINT 68

Bingley Road

VIEWPOINT INFORMATION

Location: Bingley Road

Town: Fenner

County: Madison

Latitude: 42.96933° N

Longitude: 75.78953° W

LOCATION INFORMATION

Distance Zone Represented in View: Middle
Ground

Viewer Distance*: 1.6 miles

Landscape Similarity Zone: Agricultural/Rural
Residential

Viewer/User Group(s): Local Residents, Through-
Travelers

Visually Sensitive Resource(s): Erie Canalway
National Heritage Corridor

PHOTOGRAPH INFORMATION

Date: August 31, 2023

Time: 6:22 PM

Camera: Canon EOS 5D Mark IV

Resolution: 24 Megapixels

Lens Focal Length (35mm equivalent): 50 mm

Camera Elevation: 1,547 feet

Field of View: 39 degrees

Direction of View: Southeast

Printed Size: 10" x 15"

Viewing Distance:** 21"

NOTES

*Distance as measured from the viewpoint to the closest wind turbine generator within the simulated photograph's field of view

**The simulation is at the correct perspective when printed on an 11 inch by 17 inch sheet at full scale, and viewed approximately 21 inches from the eye of the viewer.

Hoffman Falls Wind Project

Towns of Eaton, Fenner, Nelson, and Smithfield, Madison County, New York

Visual Impact Assessment
Appendix 8-A

Viewpoint Sensitivity¹:

Scenic Quality:

- ☐ Low
- ☒ Moderate
- ☐ High

Viewer Exposure

Frequency:

- ☒ Rare
- ☐ Occasional
- ☒ Regular/Repeated

Duration of View:

- ☒ Short/Brief/Fleeting
- ☐ Moderate
- ☒ Long

¹Viewpoint Sensitivity information is gathered from rating panel results. Scenic Quality is an average based on Low = 1, Moderate = 2, High = 3. Viewer Exposure reflects all those selected be the review panel.

Contrast Rating Scores²:

Component	Score	Contrast Rating
	Install	
Landform	1.5	Minimal/Moderate
Vegetation	1.5	Minimal/Moderate
Land Use	1.8	Moderate
Water	N/A	N/A
Sky	2.2	Moderate
Viewer Activity	2.0	Moderate
AVERAGE	1.8	Moderate

² Contrast Rating Scale: 0.0 - 0.2 (Insignificant), 0.3 – 0.7 (Insignificant/Minimal), 0.8 – 1.2 (Minimal), 1.3 – 1.7 (Minimal/Moderate), 1.8 - 2.2 (Moderate), 2.3 – 2.7 (Moderate/Appreciable), 2.8 – 3.2 (Appreciable) 3.3 – 3.7 Appreciable/Strong), 3.8 – 4.0 (Strong).

Contrast Rating - Lowest and Highest Scores:

Post - Install		
Component	Score	
	Low	High
Landform	0.5	2.0
Vegetation	1.0	2.0
Land Use	1.5	2.0
Water	NA	NA
Sky	2.0	2.5
Viewer Activity	1.5	2.5

Existing View



Proposed View (Post Installation)



Existing View

Viewpoint 68 is located on Bingley Road just west of its intersection with County Route 23 in the Town of Fenner. This viewpoint is located in the Agricultural/Rural residential LSZ, approximately 1.6 miles from the nearest proposed turbine that would be visible in the selected photograph’s field of view. Views from this location are typical of those available to local residents, recreational users of the Heaven and Hell Bike Trail, and visitors/members of the S/NRHP-listed Fenner Baptist Church. Views in this general area include the church and a cluster of buildings and trees bordering County Route 23, surrounded by large open fields and scattered small woodlots. In the selected photo, the existing view to the southeast includes a roadside wire fence in the immediate foreground backed by a pasture that extends from the foreground to a woodlot and hedgerow on the opposite side of County Route 23(which is out of view) in the middle ground. Additional lines of fence posts and a roadside utility line cross the field parallel to Route 23, adding vertical features to the view while also reinforcing the horizontal line of the field edge. On the left side of the view, two buildings with red roofs and light-colored siding are flanked by large evergreens and draw viewer attention. The horizon is defined by gently rolling wooded hills, except for open fields on the periphery of the selected view. While the utility line presents a horizontal feature that extends across the center of the view, the lightly colored utility poles are man-made vertical elements that rise above the horizon line into a blue sky. The rating panel indicated that the existing view has moderate scenic quality.

Proposed View

With the proposed Facility in place, a cluster of wind turbines are a prominent new addition above the horizon on the right side of the view. More spread out and distant turbines have also been added to the center and left portions of the view. The line, color, and perceived scale of the more distant turbines are consistent with the existing utility poles, and due to their greater distance from the viewer and minimal color contrast with the sky, they are barely noticeable at first glance. To the right of the view the group of closer turbines are more tightly grouped, noticeably taller, and present greater color contrast with the blue sky. These turbines are the tallest features in the landscape, create additional visual clutter on the horizon, and add movement that will attract viewer attention. Despite the introduction of large new vertical features on the right of the view, the sky remains expansive, and the turbines are consistent with other vertical man-made features in the landscape. Although the turbines’ line and form contrast with the horizontal lines and rounded forms of the existing landscape, they do not significantly detract from the scenic quality of the foreground features in the view.

Hoffman Falls Wind Project

Towns of Eaton, Fenner, Nelson, and Smithfield, Madison County, New York

EXISTING VIEW



Note: Printed at actual size, the existing view image is 15 inches wide by 10 inches high. At this size and focal length, the existing view image should be viewed from a distance 21 inches from the eye of the viewer.



VIEWPOINT 68
Bingley Road

Hoffman Falls Wind Project
Towns of Eaton, Fenner, Nelson, and Smithfield, Madison County, New York



PHOTOSIMULATION



Note: Printed at actual size, the resulting simulation image is 15 inches wide by 10 inches high. At this size and focal length, the simulation should be viewed from a distance 21 inches from the eye of the viewer.

0 1in 2in
This scale is designed to insure the simulation images are printed at the intended size.

VIEWPOINT 68
Bingley Road

Hoffman Falls Wind Project
Towns of Eaton, Fenner, Nelson, and Smithfield, Madison County, New York





Note: The image above is a panorama photograph taken from Cody Road in the Town of Fenner panning clockwise from north (left) to east (right). The green rectangle represents the extent of the simulated photograph.

VIEWPOINT 69
Cody Road

VIEWPOINT INFORMATION

Location: Cody Road

Town: Fenner

County: Madison

Latitude: 42.96361° N

Longitude: 75.75421° W

LOCATION INFORMATION

Distance Zone Represented in View: Foreground

Viewer Distance*: 340.7 feet

Landscape Similarity Zone: Agricultural/Rural
Residential

Viewer/User Group(s): Local Residents, Through-
Travelers

Visually Sensitive Resource(s): Magnificent
Madison, Erie Canalway National Heritage Corridor

PHOTOGRAPH INFORMATION

Date: Decemeber 20, 2023

Time: 12:18 PM

Camera: Canon EOS 5D Mark IV

Resolution: 24 Megapixels

Lens Focal Length (35mm equivalent): 50 mm

Camera Elevation: 1,699 feet

Field of View: 39 degrees

Direction of View: Northeast

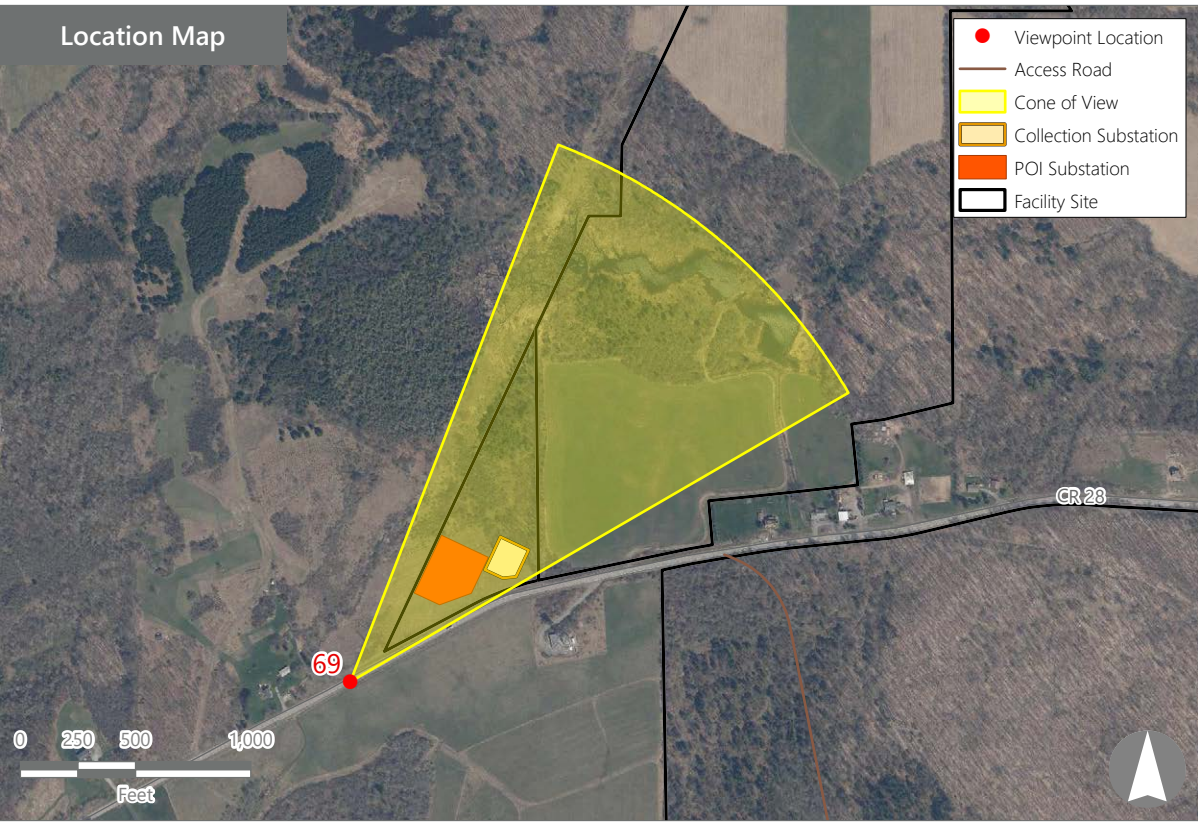
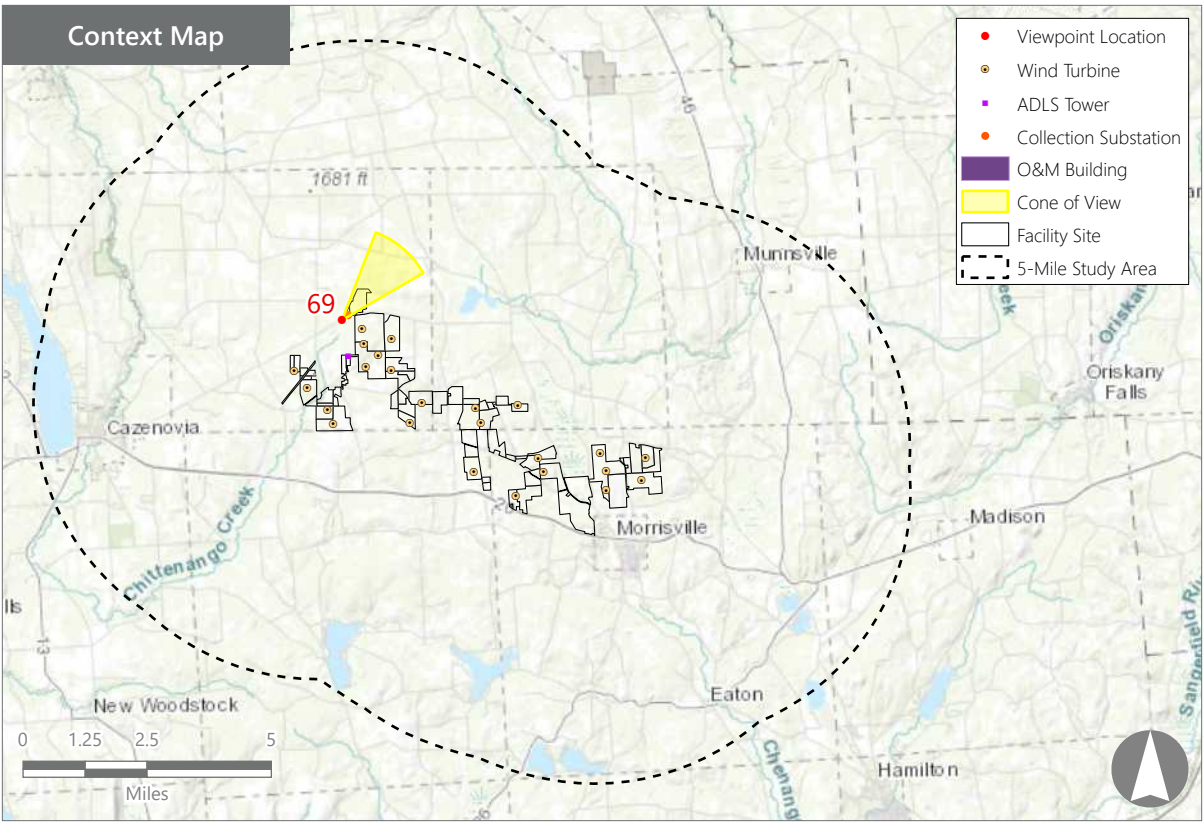
Printed Size: 10" x 15"

Viewing Distance:** 21"

NOTES

*Distance as measured from the viewpoint to the closest wind turbine generator within the simulated photograph's field of view

**The simulation is at the correct perspective when printed on an 11 inch by 17 inch sheet at full scale, and viewed approximately 21 inches from the eye of the viewer.



Hoffman Falls Wind Project

Towns of Eaton, Fenner, Nelson, and Smithfield, Madison County, New York

Visual Impact Assessment
Appendix 8-A

Viewpoint Sensitivity¹:

Scenic Quality:

- ☒ Low
- ☐ Moderate
- ☐ High

Viewer Exposure

Frequency:

- ☒ Rare
- ☐ Occasional
- ☒ Regular/Repeated

Duration of View:

- ☒ Short/Brief/Fleeting
- ☐ Moderate
- ☐ Long

¹Viewpoint Sensitivity information is gathered from rating panel results. Scenic Quality is an average based on Low = 1, Moderate = 2, High = 3. Viewer Exposure reflects all those selected by the review panel.

Contrast Rating Scores²:

Component	Score		Contrast Rating 5-7 Years
	Install	5-7 Years	
Landform	3.5	3.5	Appreciable/Strong
Vegetation	3.3	3.2	Appreciable
Land Use	3.3	3.3	Appreciable/Strong
Water	N/A	N/A	N/A
Sky	3.2	3.2	Appreciable
Viewer Activity	3.5	3.5	Appreciable/Strong
AVERAGE	3.4	3.3	Appreciable/Strong

² Contrast Rating Scale: 0.0 - 0.2 (Insignificant), 0.3 - 0.7 (Insignificant/Minimal), 0.8 - 1.2 (Minimal), 1.3 - 1.7 (Minimal/Moderate), 1.8 - 2.2 (Moderate), 2.3 - 2.7 (Moderate/Appreciable), 2.8 - 3.2 (Appreciable) 3.3 - 3.7 (Appreciable/Strong), 3.8 - 4.0 (Strong).

Contrast Rating - Lowest and Highest Scores:

Post - Install			Mitigation 5-7 Years		
Component	Score		Component	Score	
	Low	High		Low	High
Landform	3.5	3.5	Landform	3.5	3.5
Vegetation	3.0	3.5	Vegetation	3.0	3.5
Land Use	3.0	3.5	Land Use	3.0	3.5
Water	NA	NA	Water	NA	NA
Sky	3.0	3.5	Sky	3.0	3.5
Viewer Activity	3.5	3.5	Viewer Activity	3.5	3.5

Existing View



Proposed View (Post Installation)



Proposed View (5-7 Years Post Installation)



Existing View

Viewpoint 69 is located on Cody Road in the Town of Fenner, approximately 340 feet from the nearest Facility component that would be visible in the selected photograph's field of view. This viewpoint occurs in the Agricultural/Rural Residential LSZ and is typical of views available to local residents and through-travelers in the area. In the selected view to the northeast, the striped surface of Cody Road occupies nearly half of the foreground, extending away from the viewer to the right, and disappearing over a modest rise. Although outside the selected photo's field of view, a large communication tower occurs on the right side of Cody Road. In addition, a utility line runs parallel to the road and a larger transmission line supported by wood H-frame structures passes over the road and directly over the viewer at this location. The transmission line descends into a valley before cresting a wooded hill on a cleared right of way in the background. In the foreground, an open field with brown dormant vegetation slopes down away from the road edge and out of sight into a middle ground valley. Brush on the transmission line right-of-way bounds the meadow on the left and a hedgerow of bare trees bounds it to the right at the crest of an upward slope. A forested hill in the background defines the visible horizon line in the center of the view. A single wind turbine is visible above the horizon line, but the white overcast sky makes the turbine difficult to see. The abundance of man-made features, including the utility/transmission lines, wind turbine, and highway, present a cluttered pattern of horizontal and vertical features in the view. This, along with the dreary sky, brown vegetation, and lack of long-distance views result in low scenic quality.

Proposed View

With the proposed Facility in place, most of the foreground meadow is now occupied by the proposed substation and other components of the interconnection facility. The hedgerow on the right has been cleared and the landform has been substantially altered to provide a level site for the substation. The unnatural landform on which the substation sits slopes downward toward the viewer with scattered evergreen plantings and is backed by a prominent concrete block retaining wall. Because substantial portions of the substation are elevated, all the proposed structures are clearly visible against the sky. Due to their proximity to the viewer, details of the new structures are apparent, and they now dominate the view. These built structures add visual clutter and present substantial line, color, texture, and form contrast with the existing landscape. The proposed interconnection facility significantly adds to an already cluttered view and obscures views of the landscape features in the background, including the single wind turbine. Due to the proximity of the substation to the road and the height of the proposed components, mitigation plantings around the perimeter of the station do little to screen or soften views of the interconnection facility, even after five to seven years of growth. Despite the presence of existing man-made features, contrast between the existing landscape and the proposed interconnection facility would be appreciable according to the rating panel.

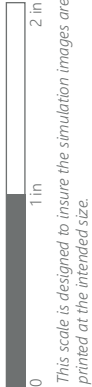
Hoffman Falls Wind Project

Towns of Eaton, Fenner, Nelson, and Smithfield, Madison County, New York



EXISTING VIEW

Note: Printed at actual size, the existing view image is 15 inches wide by 10 inches high. At this size and focal length, the existing view image should be viewed from a distance 21 inches from the eye of the viewer.



VIEWPOINT 69
Cody Road

Hoffman Falls Wind Project
Towns of Eaton, Fenner, Nelson, and Smithfield, Madison County, New York





PHOTOSIMULATION

Hoffman Falls Wind Project

Towns of Eaton, Fenner, Nelson, and Smithfield, Madison County, New York



VIEWPOINT 69

Cody Road

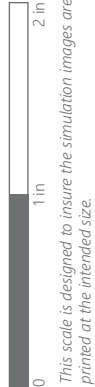


This scale is designed to insure the simulation images are printed at the intended size.



PHOTOSIMULATION POST INSTALLATION (MITIGATION - LEAF ON)

Note: Printed at actual size, the resulting simulation image is 15 inches wide by 10 inches high. At this size and focal length, the simulation should be viewed from a distance 21 inches from the eye of the viewer.



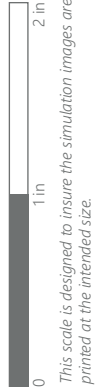
VIEWPOINT 69
Cody Road

Hoffman Falls Wind Project
Towns of Eaton, Fenner, Nelson, and Smithfield, Madison County, New York



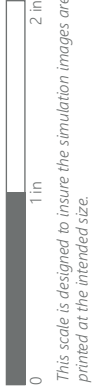


PHOTOSIMULATION POST INSTALLATION (MITIGATION - LEAF OFF)



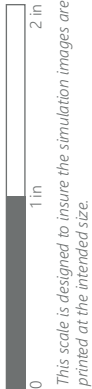
VIEWPOINT 69
Cody Road

PHOTOSIMULATION 5-7 YEARS POST INSTALLATION (MITIGATION - LEAF ON)



VIEWPOINT 69
Cody Road

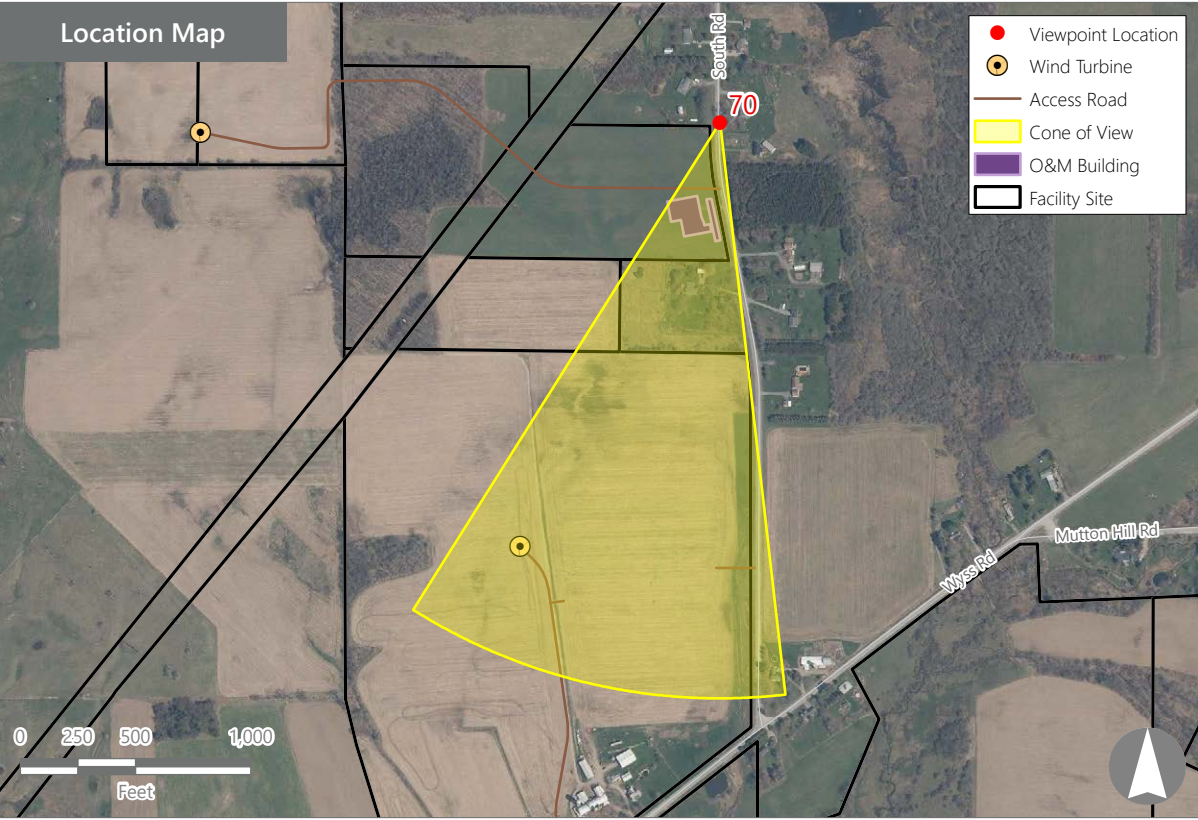
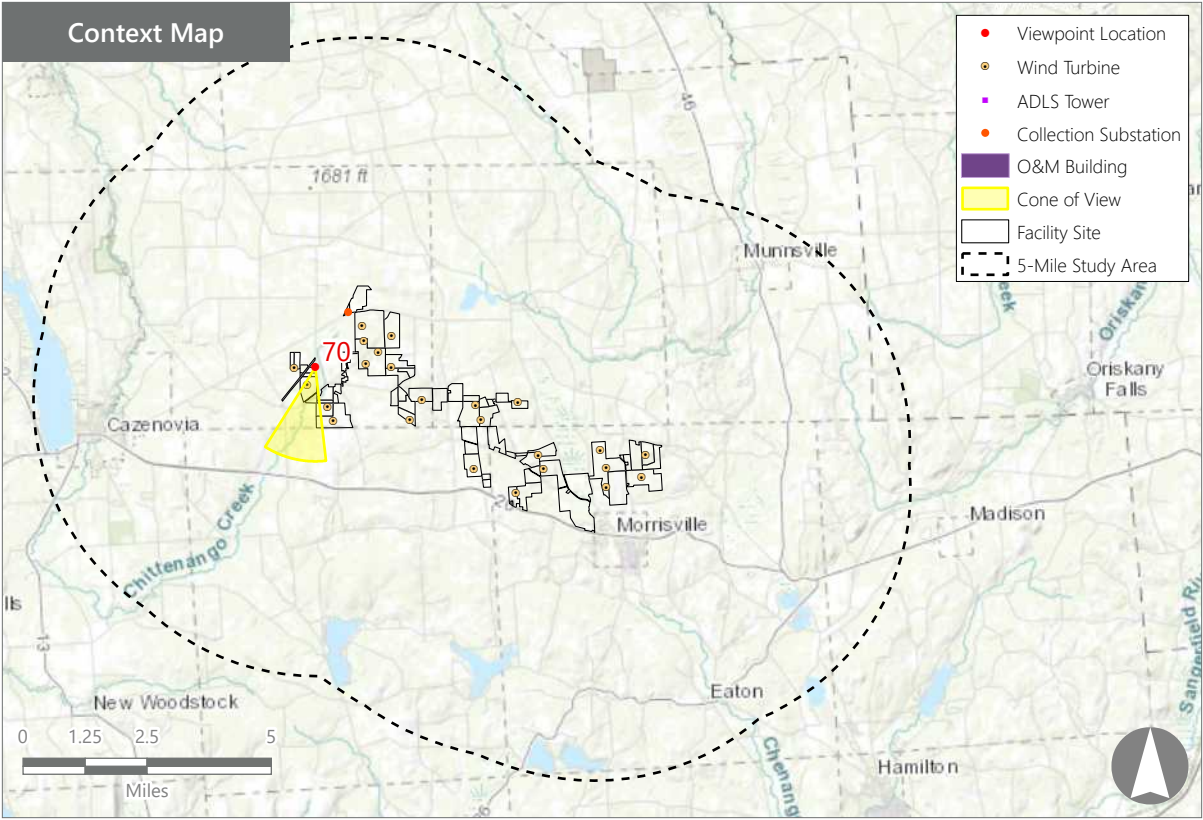
PHOTOSIMULATION 5-7 YEARS POST INSTALLATION (MITIGATION - LEAF OFF)



VIEWPOINT 69
Cody Road



Note: The image above is a panorama photograph taken from South Road in the Town of Fenner panning clockwise from southeast (left) to southwest (right). The green rectangle represents the extent of the simulated photograph.



VIEWPOINT 70
South Road

VIEWPOINT INFORMATION

Location: South Road

Town: Fenner

County: Madison

Latitude: 42.94900° N

Longitude: 75.76513° W

LOCATION INFORMATION

Distance Zone Represented in View: Foreground

Viewer Distance*: 342.6 feet

Landscape Similarity Zone: Agricultural/Rural
Residential

Viewer/User Group(s): Local Residents

Visually Sensitive Resource(s): Erie Canalway
National Heritage Corridor

PHOTOGRAPH INFORMATION

Date: Decemeber 20, 2023

Time: 12:07 PM

Camera: Canon EOS 5D Mark IV

Resolution: 24 Megapixels

Lens Focal Length (35mm equivalent): 50 mm

Camera Elevation: 1,625 feet

Field of View: 39 degrees

Direction of View: South-southwest

Printed Size: 10" x 15"

Viewing Distance**: 21"

NOTES

*Distance as measured from the viewpoint to the closest wind turbine generator within the simulated photograph's field of view

**The simulation is at the correct perspective when printed on an 11 inch by 17 inch sheet at full scale, and viewed approximately 21 inches from the eye of the viewer.

Hoffman Falls Wind Project
Towns of Eaton, Fenner, Nelson, and Smithfield, Madison County, New York

Visual Impact Assessment
Appendix 8-A

Viewpoint Sensitivity¹:

Scenic Quality:

- ☒ Low
- ☒ Moderate
- ☐ High

Viewer Exposure

Frequency:

- ☒ Rare
- ☐ Occasional
- ☒ Regular/Repeated

Duration of View:

- ☒ Short/Brief/Fleeting
- ☐ Moderate
- ☒ Long

¹Viewpoint Sensitivity information is gathered from rating panel results. Scenic Quality is an average based on Low = 1, Moderate = 2, High = 3. Viewer Exposure reflects all those selected by the review panel.

Contrast Rating Scores²:

Component	Score		Contrast Rating 5-7 Years
	Install	5-7 Years	
Landform	2.2	2.0	Moderate
Vegetation	2.0	1.7	Minimal/Moderate
Land Use	2.3	2.0	Moderate
Water	N/A	N/A	N/A
Sky	2.2	2.2	Moderate
Viewer Activity	2.2	2.0	Moderate
AVERAGE	2.2	2.0	Moderate

² Contrast Rating Scale: 0.0 - 0.2 (Insignificant), 0.3 - 0.7 (Insignificant/Minimal), 0.8 - 1.2 (Minimal), 1.3 - 1.7 (Minimal/Moderate), 1.8 - 2.2 (Moderate), 2.3 - 2.7 (Moderate/Appreciable), 2.8 - 3.2 (Appreciable) 3.3 - 3.7 Appreciable/Strong), 3.8 - 4.0 (Strong).

Contrast Rating - Lowest and Highest Scores:

Post - Install			Mitigation 5-7 Years		
Component	Score		Component	Score	
	Low	High		Low	High
Landform	1.5	3.0	Landform	1.5	2.5
Vegetation	1.5	3.0	Vegetation	1.0	2.5
Land Use	1.5	3.0	Land Use	1.0	2.5
Water	NA	NA	Water	NA	NA
Sky	2.0	2.5	Sky	2.0	2.5
Viewer Activity	1.5	3.0	Viewer Activity	1.5	2.5

Existing View



Proposed View (Post Installation)



Proposed View (5-7 Years Post Installation)



Existing View

Viewpoint 70 is located on South Road in the Town of Fenner, approximately 343 feet from the nearest proposed Facility component that would be visible in the selected photo's field of view. In the selected view to the south, the surface of South Road is present in the immediate foreground. An overhead utility line crosses the sky and parallels the road as it curves to the left away from the viewer. Beyond the road, a snow-covered agricultural field slopes gently upward from the foreground to a high point in the middle ground. The field is backed by a barn set into a cluster of tall trees on the left, and the upper portions of some scattered trees beyond the crest of the field on the right. More distant background features are screened by the crest of the hill and the trees that border the far edge of the field. The lack of long-distance visibility, along with the overcast sky, dark vegetation, and thin snow cover, give the view relatively low scenic quality.

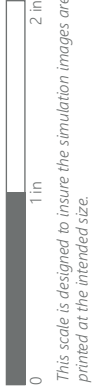
Proposed View

With the Facility in place, the proposed O&M building now occupies a significant portion of the former agricultural field. Due to its proximity to the viewer, the building appears large and screens landscape features behind it. The scale and angularity of the building also contrast with the natural features of the landscape. However, the building's set back from the road is similar to that of the existing barn, and its line, scale, and form are similar to existing modern agricultural buildings in the area. The wind turbine, on the other hand, is substantially larger than any of the surrounding landscape features, and its scale contrast is notable. Although its base falls behind the high point of the field, the turbine is fully visible and extends well into the sky. Under the lighting conditions illustrated in the selected photo, the turbine appears dark against the sky, which heightens its color contrast. Its proximity, along with the movement of its rotor blades when in operation, will make the turbine a prominent focal point in this view. Landscape plantings around the O&M facility help soften views of the building and better integrate it into the landscape following five to seven years of growth. However, these plantings do nothing to screen the wind turbine. According to the rating panel, the Facility has a moderate impact on scenic quality, but to some, may add an element of interest to the view.

Hoffman Falls Wind Project

Towns of Eaton, Fenner, Nelson, and Smithfield, Madison County, New York

EXISTING VIEW



VIEWPOINT 70
South Road

Hoffman Falls Wind Project
Towns of Eaton, Fenner, Nelson, and Smithfield, Madison County, New York

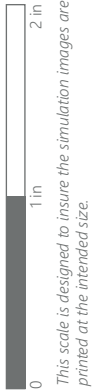


Note: Printed at actual size, the existing view image is 15 inches wide by 10 inches high. At this size and focal length, the existing view image should be viewed from a distance 21 inches from the eye of the viewer.

PHOTOSIMULATION



Note: Printed at actual size, the resulting simulation image is 15 inches wide by 10 inches high. At this size and focal length, the simulation should be viewed from a distance 21 inches from the eye of the viewer.

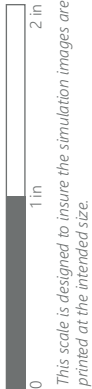


VIEWPOINT 70
South Road

Hoffman Falls Wind Project
Towns of Eaton, Fenner, Nelson, and Smithfield, Madison County, New York

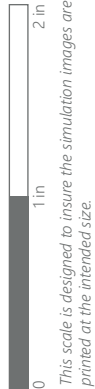


PHOTOSIMULATION 5-7 YEARS POST INSTALLATION (MITIGATION - LEAF OFF)



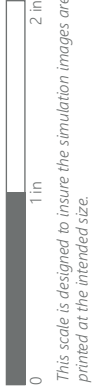
VIEWPOINT 70
South Road

PHOTOSIMULATION 5-7 YEARS POST INSTALLATION (MITIGATION - LEAF ON)



VIEWPOINT 70
South Road

PHOTOSIMULATION POST INSTALLATION (MITIGATION - LEAF OFF)

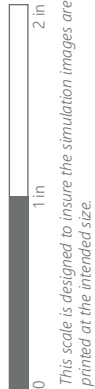


VIEWPOINT 70
South Road

PHOTOSIMULATION POST INSTALLATION (MITIGATION - LEAF ON)



Note: Printed at actual size, the resulting simulation image is 15 inches wide by 10 inches high. At this size and focal length, the simulation should be viewed from a distance 21 inches from the eye of the viewer.



VIEWPOINT 70
South Road

Hoffman Falls Wind Project
Towns of Eaton, Fenner, Nelson, and Smithfield, Madison County, New York

