



## Memorandum

**To:** Scott Biggar, Director of Development  
**From:** Gordon W. Perkins  
**Date:** October 07, 2024  
**Reference:** Hoffman Falls Wind Project  
ORES Permit Application Number: 23-00038  
Addendum to the revised Visual Impact Assessment  
**EDR Project No:** 21028

This memorandum serves as an addendum to Appendix 8-A – Revision 1, the visual impact assessment (VIA) filed with the Office of Renewable Energy Services (ORES) on June 6, 2024. The proposed Facility is a utility-scale wind energy generating project located in Madison County, New York with a generating capacity of up to 100 megawatts (MW). The Facility will include up to 24 wind turbines, with 12 located in the Town of Fenner, three in the Town of Smithfield, one in the Town of Nelson, and eight in the Town of Eaton. Since the development of Appendix 8-A – Revision 1, four turbines have been repositioned in order to comply with setback requirements set forth by ORES. Table 1 below summarizes the proposed layout modifications and Figure 1 in the Applicant’s response to ORES’s second notice of incomplete application (NOIA) illustrates the revised turbine positions.

**Table 1. Turbine Position Shifts**

<b>Turbine ID</b>	<b>Town</b>	<b>Reposition Direction</b>	<b>Reposition Distance</b>	<b>Elevation Change</b>
T-1	Fenner	South	62.3 ft	+ 1.1 ft
T-2	Fenner	Southwest	154.4 ft	- 5 ft
T-11	Fenner	North-Northeast	498.8 ft	-45.5 ft
T-15	Smithfield	Northwest	26.8 ft	-1.6 ft

To assess the potential visual effects associated with these turbine shifts, the simulations included in Attachments D and D1 of the revised VIA were updated. The simulation updates were completed using the methodology described in the revised VIA. The updated simulations, as well as the original simulations, are attached to this memorandum. EDR visual resource assessment specialists reviewed the updated Facility layout and design data and the updated simulations and completed an assessment of the change in visual effects resultant from the proposed changes

identified in Table 1. This assessment, which is provided in Table 2, identifies the number of repositioned turbines that are visible in the simulation and the change (if any) in visual contrast.<sup>1</sup>

**Table 2. Visual Simulation Review**

Viewpoint Number and Attachment	Location and/or VSR Represented	Town	Viewer/User Group Represented	Anticipated Change in Visual Effects Resulting from Revised Layout
3 (D)	East Mile Strip Road Erie Canalway National Heritage Corridor	Smithfield	Local Residents	Four repositioned turbines visible. <b>No perceptible change in visual contrast.</b>
14 (D)	State Route 46 Erie Canalway National Heritage Corridor	Stockbridge	Local Residents, Through Travelers	Two repositioned turbines slightly visible. <b>No perceptible change in visual contrast.</b>
18 (D)	Gill Road Erie Canalway National Heritage Corridor	Smithfield	Local Residents	Two repositioned turbines visible. <b>Negligible reduction in visual contrast due to dispersion of stacking turbines.</b>
23 (D)	Stone Bridge Road	Nelson	Local Residents	One repositioned turbine visible. <b>No perceptible change in visual contrast.</b>
36 (D)	Madison Road State University of New York College of Agriculture and Technology at Morrisville, Edward R Andrews Elementary School, Village of Morrisville	Eaton	Local Residents, Tourists/ Recreational Users	No repositioned turbines visible. <b>No Change in Visual Simulation</b>
40 (D)	US Route 20 Scenic Route 20	Eaton	Local Residents, Through Travelers	One repositioned turbine slightly visible. <b>No perceptible change in visual contrast.</b>
41 (D)	Bliss Road State University of New York College of Agriculture and Technology at Morrisville – Equine Center	Nelson	Local Residents, Tourists/ Recreational Users	No repositioned turbines visible. <b>No Change in Visual Simulation</b>
42 (D)	Brooks Road Erie Canalway National Heritage Corridor	Smithfield	Local Residents	One repositioned turbine visible. <b>No perceptible change in visual contrast.</b>

<sup>1</sup> All wireframe renderings that include the turbines in Table 1 were updated, but as the Facility would have no visual effect from the viewpoints where wireframe renderings were completed, they are not assessed in Table 2.

Viewpoint Number and Attachment	Location and/or VSR Represented	Town	Viewer/User Group Represented	Anticipated Change in Visual Effects Resulting from Revised Layout
45 (D)	Nichols Pond Road Erie Canalway National Heritage Corridor, Heaven and Hell Bike Trail	Fenner	Local Residents	One repositioned turbine slightly visible. <b>No perceptible change in visual contrast.</b>
50 (D)	Buyea Road Snow Valley Riders Snowmobile Trail, Erie Canalway National Heritage Corridor, Heaven and Hell Bike Trail	Fenner	Local Residents, Tourists/ Recreational Users	One repositioned turbine visible. <b>Negligible reduction in visual contrast due to additional screening by topography.</b>
54 (D)	South Road Farmstead with Italianate-style Residence - Wyss Road, Erie Canalway National Heritage Corridor	Fenner	Local Residents	No repositioned turbines visible. <b>No Change in Visual Simulation</b>
58 (D)	Hardscrabble Road Town of Nelson Scenic Roadway, Cazenovia/Erieville Roundabout, Magnificent Madison, Town of Nelson Scenic Overlay District	Nelson	Local Residents, Through Travelers	Two repositioned turbines slightly visible. <b>No perceptible change in visual contrast.</b>
60 (D)	Cazenovia Art Park Stone Quarry Hill Art Park, Dorothy Riester House & Studio, Erie Canalway National Heritage Corridor	Cazenovia	Local Residents, Tourists/ Recreational Users	One repositioned turbine visible. <b>No perceptible change in visual contrast.</b>
63 (D)	Lorenzo State Historic Site Cazenovia Village Historic District, Lorenzo State Historic Site, Rippleton Schoolhouse, Village of Cazenovia, Erie Canalway National Heritage Corridor	Cazenovia	Local Residents, Through Travelers	One repositioned turbine visible. <b>No perceptible change in visual contrast.</b>
68 (D)	Bingley Road Heaven and Hell Bike Trail, Erie Canalway National Heritage Corridor	Fenner	Local Residents, Through Travelers	Three repositioned turbines visible. <b>Negligible increase in visual contrast due to less even spatial arrangement.</b>
69 (D)	Cody Road Magnificent Madison, Erie Canalway National Heritage Corridor	Fenner	Local Residents, Through Travelers	No repositioned turbines visible. <b>No Change in Visual Simulation</b>

Viewpoint Number and Attachment	Location and/or VSR Represented	Town	Viewer/User Group Represented	Anticipated Change in Visual Effects Resulting from Revised Layout
70 (D)	South Road Erie Canalway National Heritage Corridor	Fenner	Local Residents	One repositioned turbine visible. <b>No perceptible change in visual contrast.</b>
84 (D1)	US Route 20 Scenic Route 20	Nelson	Local Residents, Through Travelers, Tourists/ Recreational Users	One repositioned turbine slightly visible. <b>No perceptible change in visual contrast.</b>
86 (D1)	US Route 20 Scenic Route 20	Nelson	Local Residents, Through Travelers, Tourists/ Recreational Users	No repositioned turbines visible. <b>No Change in Visual Simulation</b>
87 (D1)	US Route 20 Scenic Route 20	Nelson	Local Residents, Through Travelers, Tourists/ Recreational Users	One repositioned turbine visible. <b>No perceptible change in visual contrast.</b>
88 (D1)	Rich Road Smithfield, Oneida Nation Lands	Smithfield	Local Residents,	One repositioned turbine visible. <b>No perceptible change in visual contrast.</b>

As illustrated in revised Attachments D and D1 and as discussed in Table 2, 13 of the 16 visual simulations where the turbines in Table 1 are visible show no perceptible change in visual contrast as a result of the relocation of the four turbines. In three simulations, there is a negligible reduction (Viewpoints 4 and 18) or increase (Viewpoint 68) in the visual contrast, due to the spatial arrangement of wind turbines relative to each other and/or the landscape. However, in all three of these simulations, the repositioning of the turbines does not substantively change the visual contrast of the Facility, as perceived from that viewpoint. Therefore, the proposed modifications to the layout will not alter the conclusions reached in the revised VIA, and the anticipated visual impacts resulting from the Facility layout illustrated in the VIA remain relevant to the current layout.





*Note: The image above is a panorama photograph taken from E Mile Strip Road in the Town of Smithfield panning clockwise from southeast (left) to west (right). The green rectangle represents the extent of the simulated photograph.*

**VIEWPOINT 3**  
E Mile Strip Road

**VIEWPOINT INFORMATION**

**Location:** E Mile Strip Road  
**Town:** Smithfield  
**County:** Madison  
**Latitude:** 42.99976° N  
**Longitude:** 75.70407° W

**LOCATION INFORMATION**

**Distance Zone Represented in View:** Middle  
Ground  
**Viewer Distance\*:** 3.3 miles  
**Landscape Similarity Zone:** Agricultural/Rural  
Residential  
**Viewer/User Group(s):** Local Residents  
**Visually Sensitive Resource(s):** Erie Canalway  
National Heritage Corridor

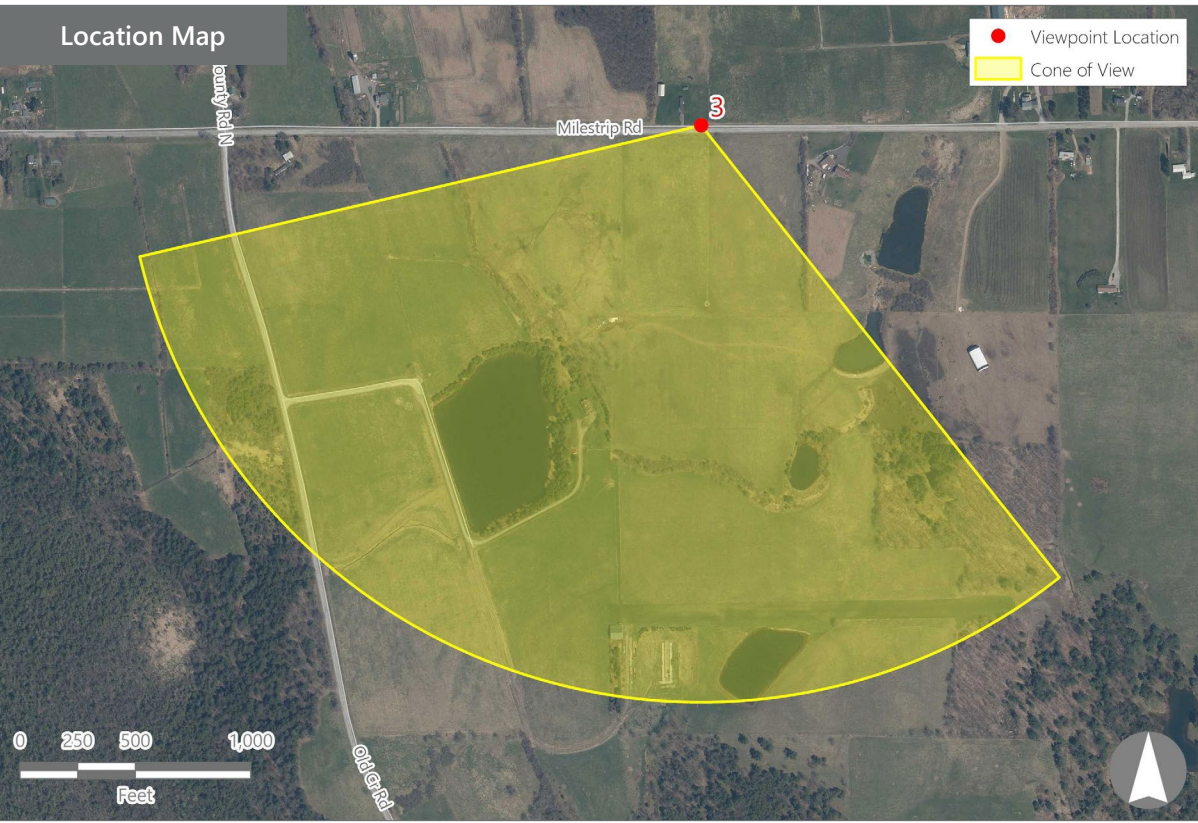
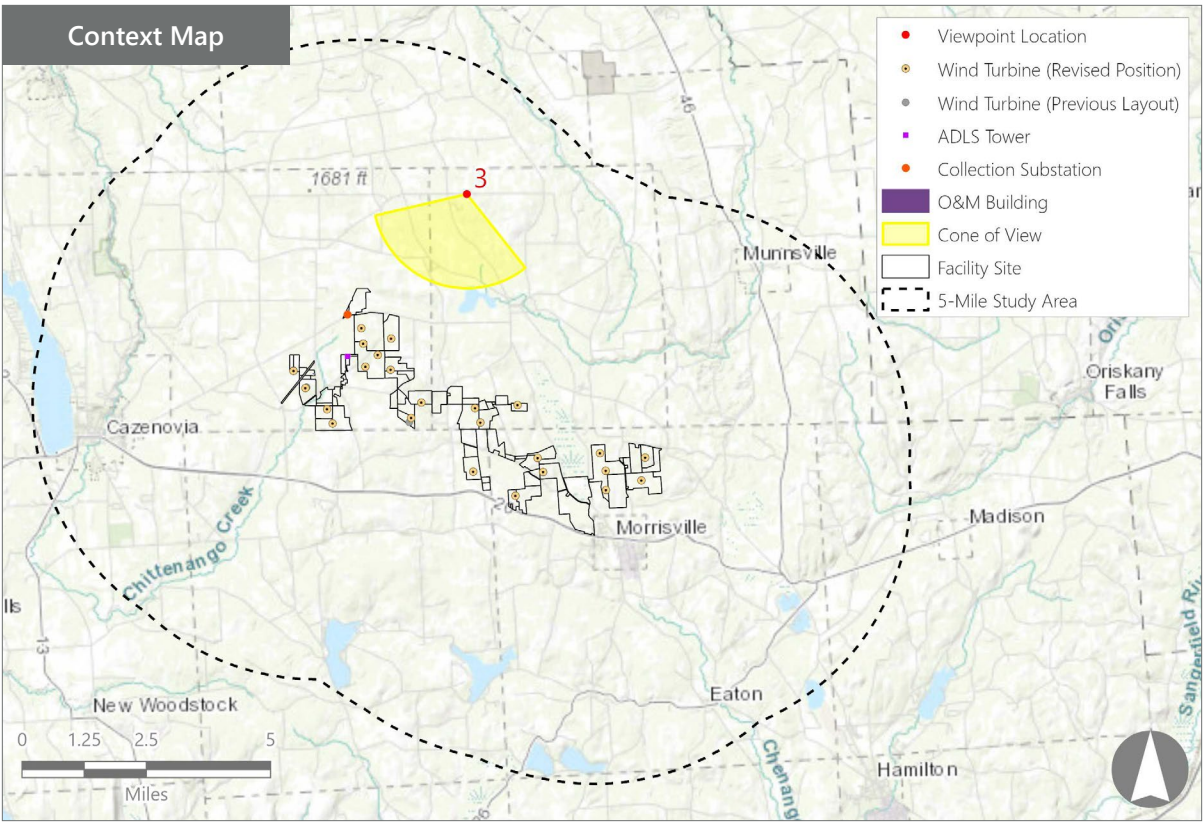
**PHOTOGRAPH INFORMATION**

**Date:** August 31, 2023  
**Time:** 8:17 AM  
**Camera:** Canon EOS 5D Mark IV  
**Resolution:** 24 Megapixels  
**Lens Focal Length (35mm equivalent):** 50 mm  
**Camera Elevation:** 1,505 feet  
**Field of View:** 39 degrees  
**Direction of View:** South-Southwest  
**Printed Size:** 10" x 15"  
**Viewing Distance\*\*:** 21"

**NOTES**

\*Distance as measured from the viewpoint to the closest wind turbine generator within the simulated photograph's field of view

\*\*The simulation is at the correct perspective when printed on an 11 inch by 17 inch sheet at full scale, and viewed approximately 21 inches from the eye of the viewer.



**Hoffman Falls Wind Project**

Towns of Eaton, Fenner, Nelson, and Smithfield, Madison County, New York

**Visual Impact Assessment Addendum**  
**Appendix 8-A**



Viewpoint Sensitivity<sup>1</sup>:

Scenic Quality:

- ☐ Low
- ☒ Moderate
- ☒ High

Viewer Exposure

Frequency:

- ☒ Rare
- ☐ Occasional
- ☒ Regular/Repeated

Duration of View:

- ☐ Short/Brief/Fleeting
- ☒ Moderate
- ☒ Long

<sup>1</sup>Viewpoint Sensitivity information is gathered from rating panel results. Scenic Quality is an average based on Low = 1, Moderate = 2, High = 3. Viewer Exposure reflects all those selected be the review panel.

Contrast Rating Scores<sup>2</sup>:

Component	Score	Contrast Rating
	Install	
Landform	1.7	Minimal/Moderate
Vegetation	1.2	Minimal
Land Use	1.5	Minimal/Moderate
Water	1.0	Minimal
Sky	2.2	Moderate
Viewer Activity	1.8	Moderate
AVERAGE	1.7	Minimal/Moderate

<sup>2</sup> Contrast Rating Scale: 0.0 - 0.2 (Insignificant), 0.3 – 0.7 (Insignificant/Minimal), 0.8 – 1.2 (Minimal), 1.3 – 1.7 (Minimal/Moderate), 1.8 - 2.2 (Moderate), 2.3 – 2.7 (Moderate/Appreciable), 2.8 – 3.2 (Appreciable) 3.3 – 3.7 Appreciable/Strong), 3.8 – 4.0 (Strong).

Contrast Rating - Lowest and Highest Scores:

Post - Install		
Component	Score	
	Low	High
Landform	1.0	2.0
Vegetation	0.5	1.5
Land Use	1.0	2.0
Water	NA	NA
Sky	2.0	2.5
Viewer Activity	1.5	2.0

Existing View



Proposed View (Post Installation)



Existing View

Viewpoint 3 is located on East Mile Strip Road in the Town of Smithfield, approximately 3.3 miles from the nearest proposed wind turbine that would be visible in the selected photographs’ field of view. This viewpoint occurs in the Agricultural/Rural Residential LSZ and is typical of more long-distance views available to residents from their homes and local roads. Views in this portion of the VSA include broad expanses of open agricultural land interspersed with woodlots, hedgerows, and scattered farm complexes. Rolling topography and relatively high elevation combine with the open fields to allow long distance views of a bucolic rural landscape. The selected photos present a panorama in which a section of East Mile Strip Road is visible in the immediate foreground along the right edge of the view. An overhead utility line and a broken row of shrubby roadside vegetation parallels the western edge of road, with a single pole acting as a foreground focal point on the right side of the view. On the opposite side of the road, a gently rolling open pasture, punctuated with young trees, descends from the foreground into the middle ground. The pasture is bisected by a hedgerow that extends across the full field of view. Beyond the southern hedgerow, portions of a pond can be seen through breaks in the hedgerow. Although well screened, the pond represents a focal point in the middle ground of this view. Beyond the rolling fields in the middle ground, the land descends into a wooded valley before rising to a background ridgeline. The gently sloping background ridge is a patchwork of fields and forest with widely scattered agricultural buildings. Several existing wind turbines are background focal points along the top of the ridgeline on the right side of the view. The rating panel indicated that the existing view has relatively high scenic quality.

Proposed View

With the proposed Project in place, the entire background ridgeline is dotted with turbines. The new turbines are consistent with the existing turbines and appear to be an extension of the existing wind project. Because they are confined to the background ridgeline, the Facility has not significantly altered the character or composition of the existing landscape. The new turbines are obvious new visual features, but their white color minimizes color contrast with the sky at the horizon. Small areas of forest have been removed and portions of access roads are now visible as a result of the Project. However, since these changes are minor and confined to the background of the view, they do not stand out. While they extend across the entire field of view, their distance and relative uniformity of spacing minimize the sense of visual clutter. Combined with the existing turbines, the Facility draws greater viewer attention and becomes the dominant focal point in this view. However, the lack of turbines in the foreground and middle ground, and the remaining open fields, forests, and farms on the background hillside, maintain the view’s open bucolic character and scenic quality. The rating panel indicated that the proposed Facility presents minimal to moderate contrast with the existing landscape.

Hoffman Falls Wind Project

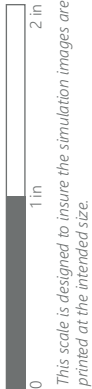
Towns of Eaton, Fenner, Nelson, and Smithfield, Madison County, New York



EXISTING VIEW



*Note: Printed at actual size, the existing view image is 15 inches wide by 10 inches high. At this size and focal length, the existing view image should be viewed from a distance 21 inches from the eye of the viewer.*



VIEWPOINT 3  
E Mile Strip Road

**Hoffman Falls Wind Project**  
Towns of Eaton, Fenner, Nelson, and Smithfield, Madison County, New York

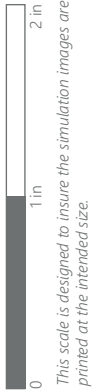




PHOTOSIMULATION



*Note: Printed at actual size, the resulting simulation image is 15 inches wide by 10 inches high. At this size and focal length, the simulation should be viewed from a distance 21 inches from the eye of the viewer.*



**VIEWPOINT 3**  
**E Mile Strip Road**

**Hoffman Falls Wind Project**  
Towns of Eaton, Fenner, Nelson, and Smithfield, Madison County, New York

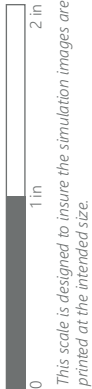




REVISED PHOTOSIMULATION



*Note: Printed at actual size, the resulting simulation image is 15 inches wide by 10 inches high. At this size and focal length, the simulation should be viewed from a distance 21 inches from the eye of the viewer.*



**VIEWPOINT 3**  
**E Mile Strip Road**

**Hoffman Falls Wind Project**  
Towns of Eaton, Fenner, Nelson, and Smithfield, Madison County, New York

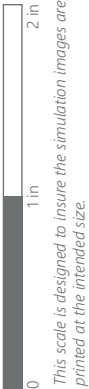




EXISTING VIEW



*Note: Printed at actual size, the existing view image is 15 inches wide by 10 inches high. At this size and focal length, the existing view image should be viewed from a distance 21 inches from the eye of the viewer.*



VIEWPOINT 3  
E Mile Strip Road

**Hoffman Falls Wind Project**  
Towns of Eaton, Fenner, Nelson, and Smithfield, Madison County, New York

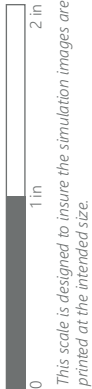




PHOTOSIMULATION



*Note: Printed at actual size, the resulting simulation image is 15 inches wide by 10 inches high. At this size and focal length, the simulation should be viewed from a distance 21 inches from the eye of the viewer.*



VIEWPOINT 3  
E Mile Strip Road

**Hoffman Falls Wind Project**  
Towns of Eaton, Fenner, Nelson, and Smithfield, Madison County, New York

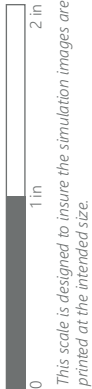




REVISED PHOTOSIMULATION



*Note: Printed at actual size, the resulting simulation image is 15 inches wide by 10 inches high. At this size and focal length, the simulation should be viewed from a distance 21 inches from the eye of the viewer.*



VIEWPOINT 3  
E Mile Strip Road

**Hoffman Falls Wind Project**  
Towns of Eaton, Fenner, Nelson, and Smithfield, Madison County, New York

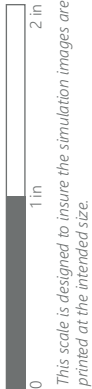




EXISTING VIEW



*Note: Printed at actual size, the existing view image is 15 inches wide by 10 inches high. At this size and focal length, the existing view image should be viewed from a distance 21 inches from the eye of the viewer.*



VIEWPOINT 3  
E Mile Strip Road

**Hoffman Falls Wind Project**  
Towns of Eaton, Fenner, Nelson, and Smithfield, Madison County, New York

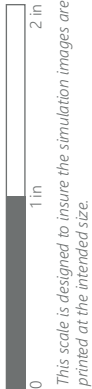




PHOTOSIMULATION



*Note: Printed at actual size, the resulting simulation image is 15 inches wide by 10 inches high. At this size and focal length, the simulation should be viewed from a distance 21 inches from the eye of the viewer.*



VIEWPOINT 3  
E Mile Strip Road

**Hoffman Falls Wind Project**  
Towns of Eaton, Fenner, Nelson, and Smithfield, Madison County, New York

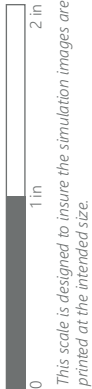




REVISED PHOTOSIMULATION



*Note: Printed at actual size, the resulting simulation image is 15 inches wide by 10 inches high. At this size and focal length, the simulation should be viewed from a distance 21 inches from the eye of the viewer.*



**VIEWPOINT 3**  
**E Mile Strip Road**

**Hoffman Falls Wind Project**  
Towns of Eaton, Fenner, Nelson, and Smithfield, Madison County, New York





EXISTING VIEW



0 1in 2 in  
This scale is designed to insure the simulation images are printed at the intended size.

VIEWPOINT 3  
E Mile Strip Road

**Hoffman Falls Wind Project**  
Towns of Eaton, Fenner, Nelson, and Smithfield, Madison County, New York



*Note: Printed at actual size, the existing view image is 15 inches wide by 10 inches high. At this size and focal length, the existing view image should be viewed from a distance 21 inches from the eye of the viewer.*



PHOTOSIMULATION



0 1in 2 in  
This scale is designed to insure the simulation images are printed at the intended size.

VIEWPOINT 3  
E Mile Strip Road

**Hoffman Falls Wind Project**  
Towns of Eaton, Fenner, Nelson, and Smithfield, Madison County, New York



*Note: Printed at actual size, the resulting simulation image is 15 inches wide by 10 inches high. At this size and focal length, the simulation should be viewed from a distance 21 inches from the eye of the viewer.*



REVISED PHOTOSIMULATION



*Note: Printed at actual size, the resulting simulation image is 15 inches wide by 10 inches high. At this size and focal length, the simulation should be viewed from a distance 21 inches from the eye of the viewer.*

0 1in 2in  
This scale is designed to insure the simulation images are printed at the intended size.

VIEWPOINT 3  
E Mile Strip Road

**Hoffman Falls Wind Project**  
Towns of Eaton, Fenner, Nelson, and Smithfield, Madison County, New York

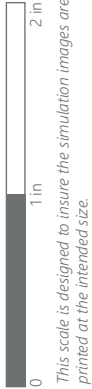




EXISTING VIEW - PANORAMA



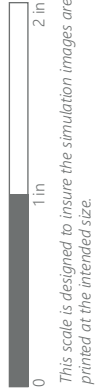
VIEWPOINT 3  
E Mile Strip Road







VIEWPOINT 3  
E Mile Strip Road







VIEWPOINT 3  
E Mile Strip Road

