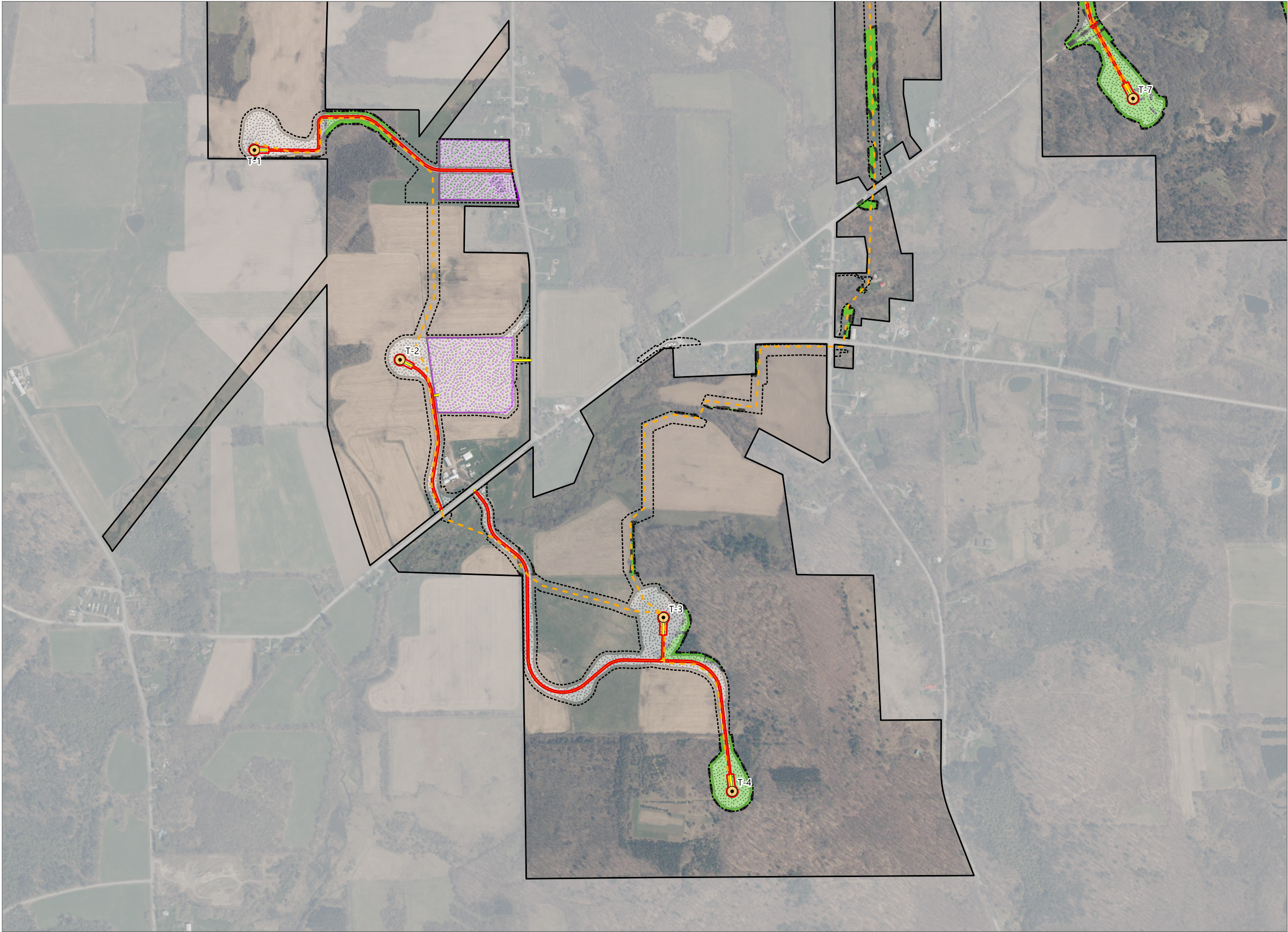


Figure 3-11. Facility Site Overlays - Revision 1

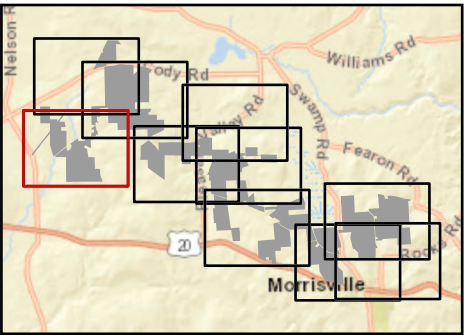


Hoffman Falls Wind

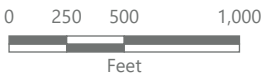
Towns of Eaton, Fenner, Nelson and
Smithfield, Madison County,
New York

**Section 94-c Second Supplement
Matter No. 23-0038**

- Wind Turbine
- Access Road
- Collection Line
- O&M Building
- Laydown Area
- Limit of Tree Clearing
- Limit of Impervious Surface
- Limit of Grading
- Limit of Disturbance
- Facility Site



Sheet 1 of 10



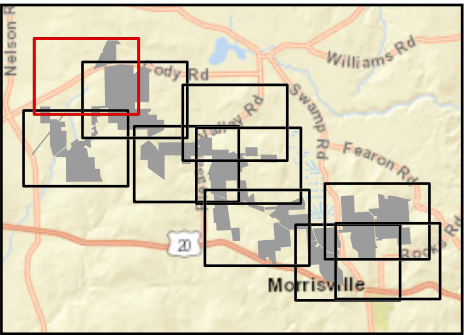
Prepared August 26, 2024
Basemap: USDA NAIP "2023 New York 60cm" orthoimagery map
service

Hoffman Falls Wind

Towns of Eaton, Fenner, Nelson and
Smithfield, Madison County,
New York

**Section 94-c Second Supplement
Matter No. 23-0038**

- Wind Turbine
- ADLS Tower
- Access Road
- Collection Line
- Collection Substation
- POI Substation
- Limit of Tree Clearing
- Limit of Impervious Surface
- Limit of Grading
- Limit of Disturbance
- Facility Site



Sheet 2 of 10



0 250 500 1,000
Feet

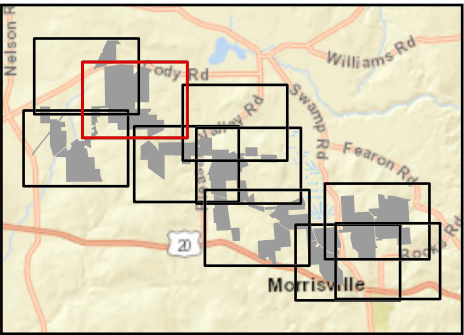
Prepared August 26, 2024
Basemap: USDA NAIP "2023 New York 60cm" orthoimagery map
service

Hoffman Falls Wind

Towns of Eaton, Fenner, Nelson and
Smithfield, Madison County,
New York

**Section 94-c Second Supplement
Matter No. 23-0038**

- Wind Turbine
- ADLS Tower
- Access Road
- Collection Line
- Collection Substation
- POI Substation
- Limit of Tree Clearing
- Limit of Impervious Surface
- Limit of Grading
- Limit of Disturbance
- Facility Site

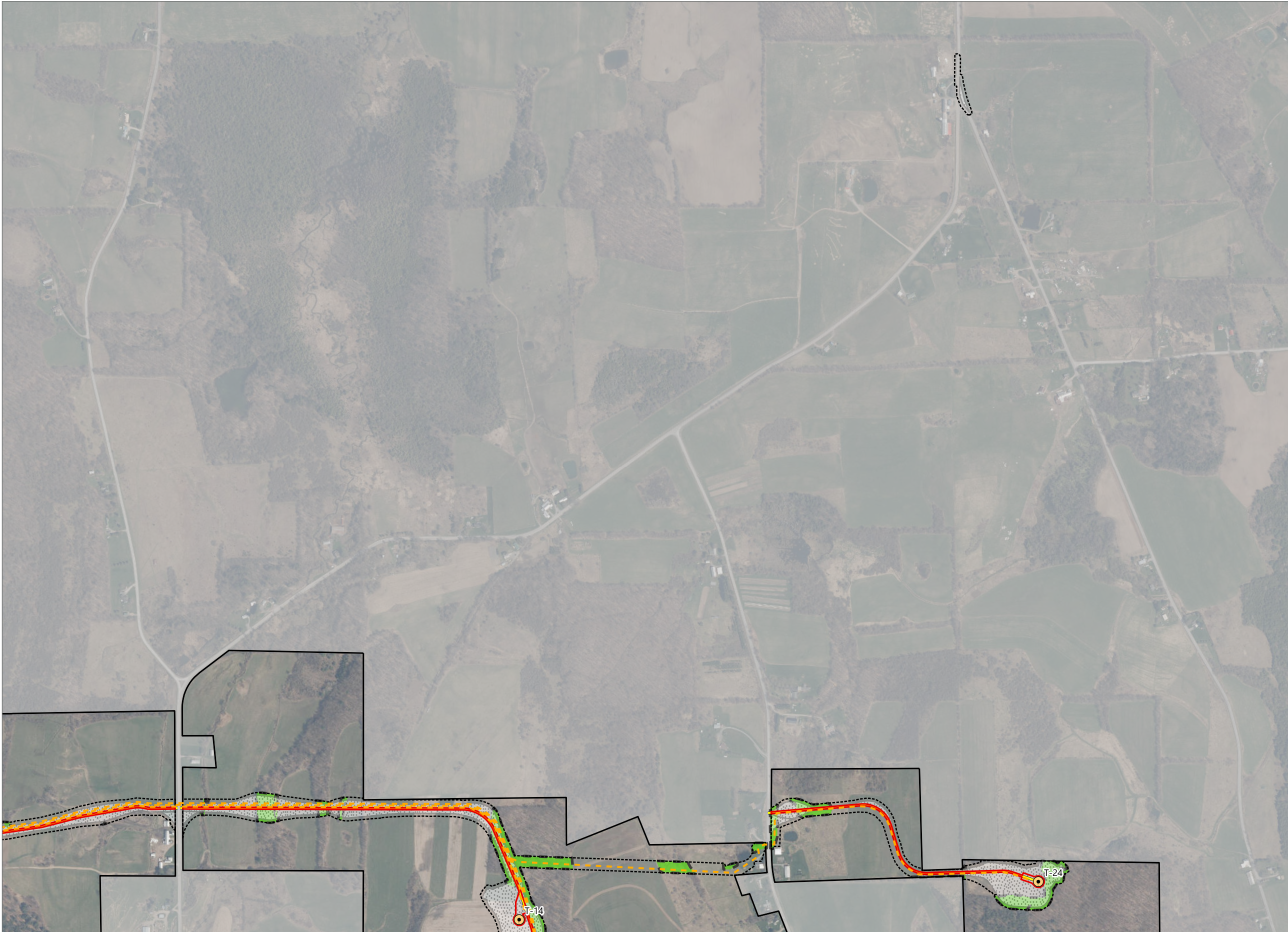


Sheet 3 of 10



0 250 500 1,000
Feet

Prepared August 26, 2024
Basemap: USDA NAIP "2023 New York 60cm" orthoimagery map
service

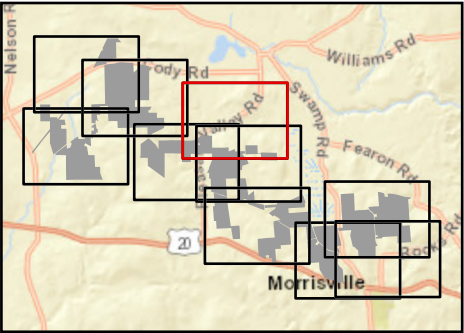


Hoffman Falls Wind

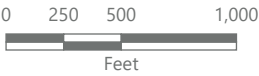
Towns of Eaton, Fenner, Nelson and
Smithfield, Madison County,
New York

**Section 94-c Second Supplement
Matter No. 23-0038**

- Wind Turbine
- Access Road
- Collection Line
- Limit of Tree Clearing
- Limit of Impervious Surface
- Limit of Grading
- Limit of Disturbance
- Facility Site



Sheet 4 of 10



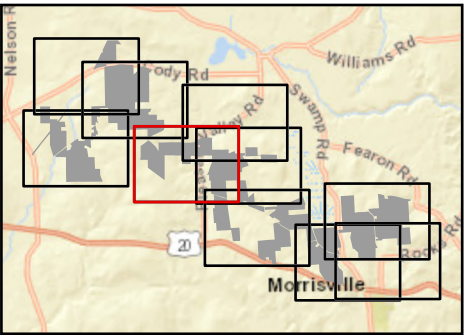
Prepared August 26, 2024
Basemap: USDA NAIP "2023 New York 60cm" orthoimagery map
service

Hoffman Falls Wind

Towns of Eaton, Fenner, Nelson and
Smithfield, Madison County,
New York

**Section 94-c Second Supplement
Matter No. 23-0038**

- Wind Turbine
- Permanent MET Tower
- Access Road
- Collection Line
- Limit of Tree Clearing
- Limit of Impervious Surface
- Limit of Grading
- Limit of Disturbance
- Facility Site

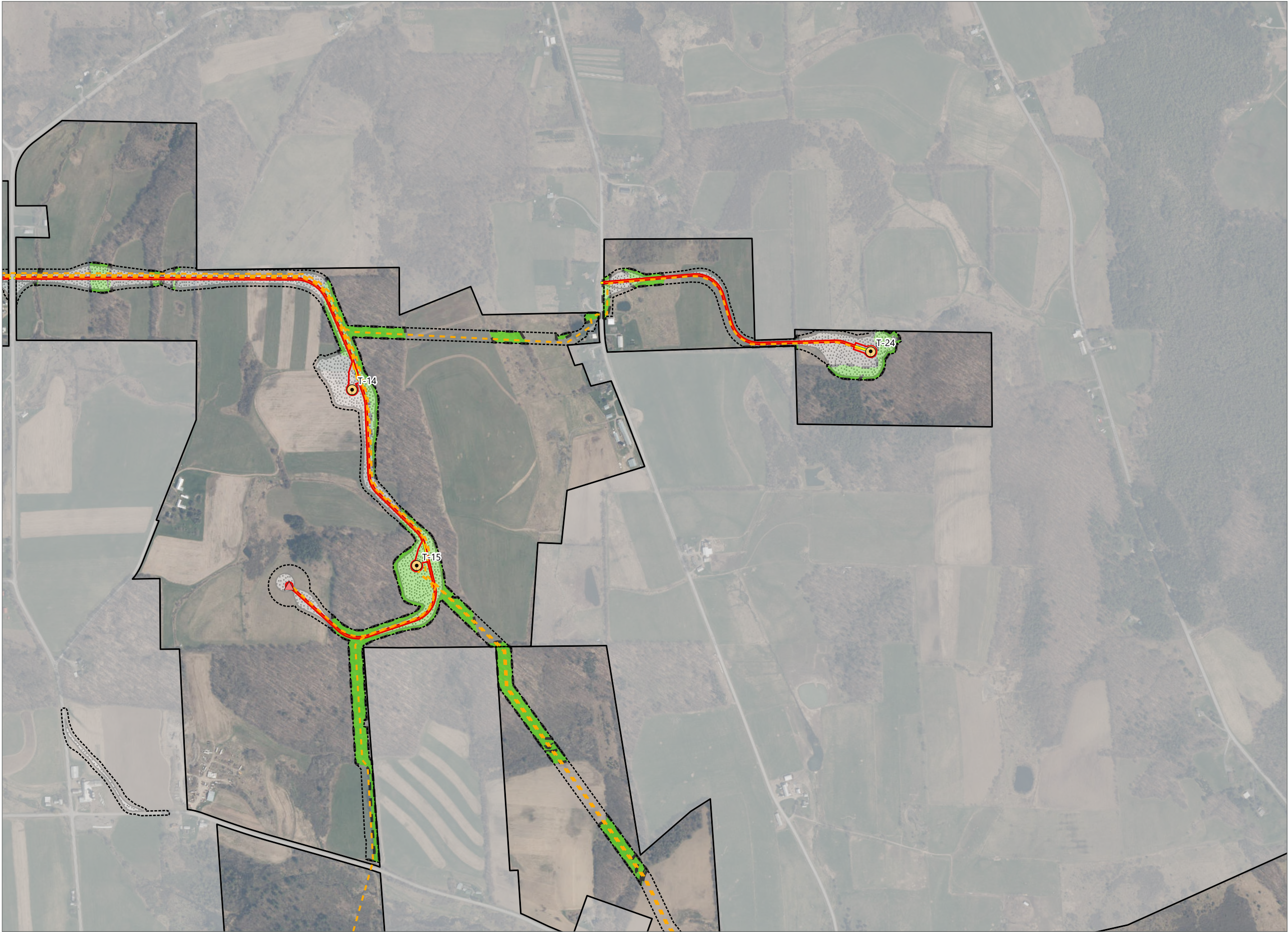


Sheet 5 of 10



0 250 500 1,000
Feet

Prepared August 26, 2024
Basemap: USDA NAIP "2023 New York 60cm" orthoimagery map
service

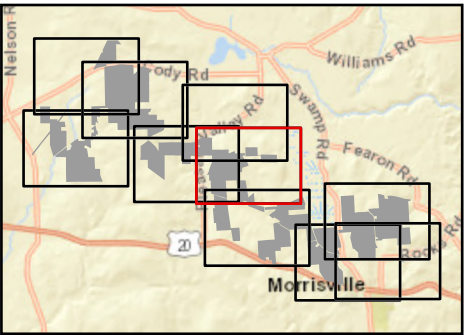


Hoffman Falls Wind

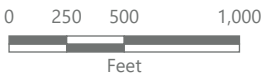
Towns of Eaton, Fenner, Nelson and
Smithfield, Madison County,
New York

**Section 94-c Second Supplement
Matter No. 23-0038**

- Wind Turbine
- Permanent MET Tower
- Access Road
- Collection Line
- Limit of Tree Clearing
- Limit of Impervious Surface
- Limit of Grading
- Limit of Disturbance
- Facility Site



Sheet 6 of 10



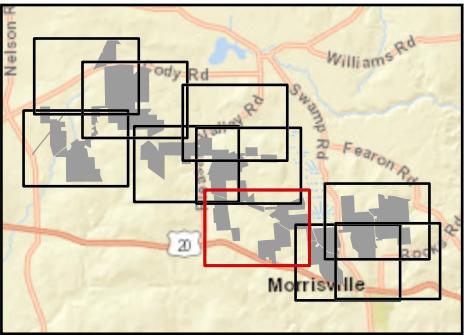
Prepared August 26, 2024
Basemap: USDA NAIP "2023 New York 60cm" orthoimagery map
service

Hoffman Falls Wind

Towns of Eaton, Fenner, Nelson and
Smithfield, Madison County,
New York

**Section 94-c Second Supplement
Matter No. 23-0038**

- Wind Turbine
- Access Road
- Collection Line
- Laydown Area
- Limit of Tree Clearing
- Limit of Impervious Surface
- Limit of Grading
- Limit of Disturbance
- Facility Site

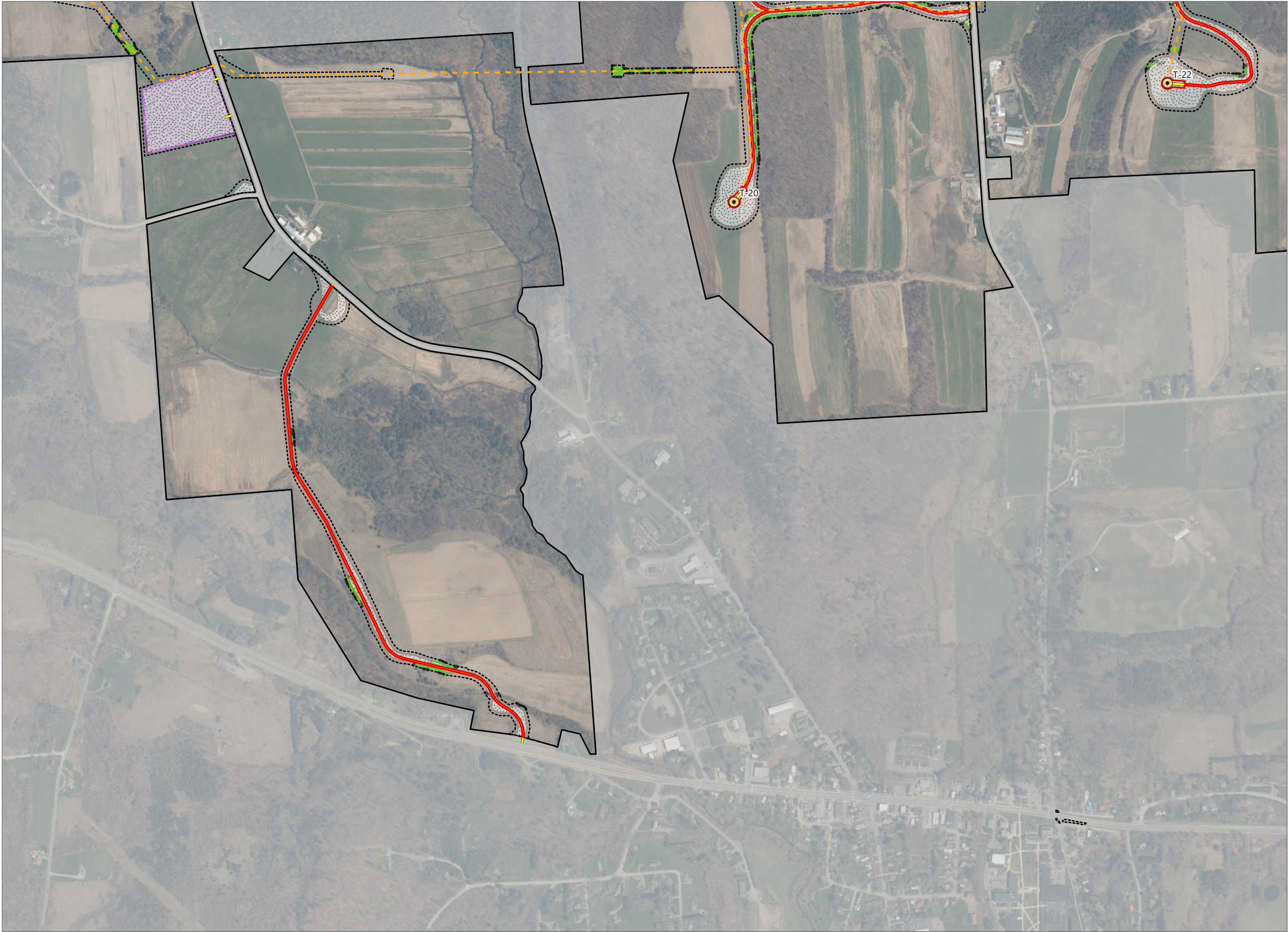


Sheet 7 of 10



0 250 500 1,000
Feet

Prepared August 26, 2024
Basemap: USDA NAIP "2023 New York 60cm" orthoimagery map
service

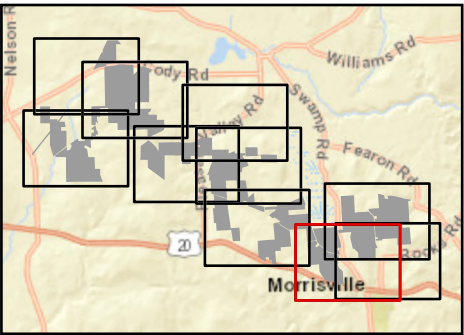


Hoffman Falls Wind

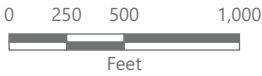
Towns of Eaton, Fenner, Nelson and
Smithfield, Madison County,
New York

**Section 94-c Second Supplement
Matter No. 23-0038**

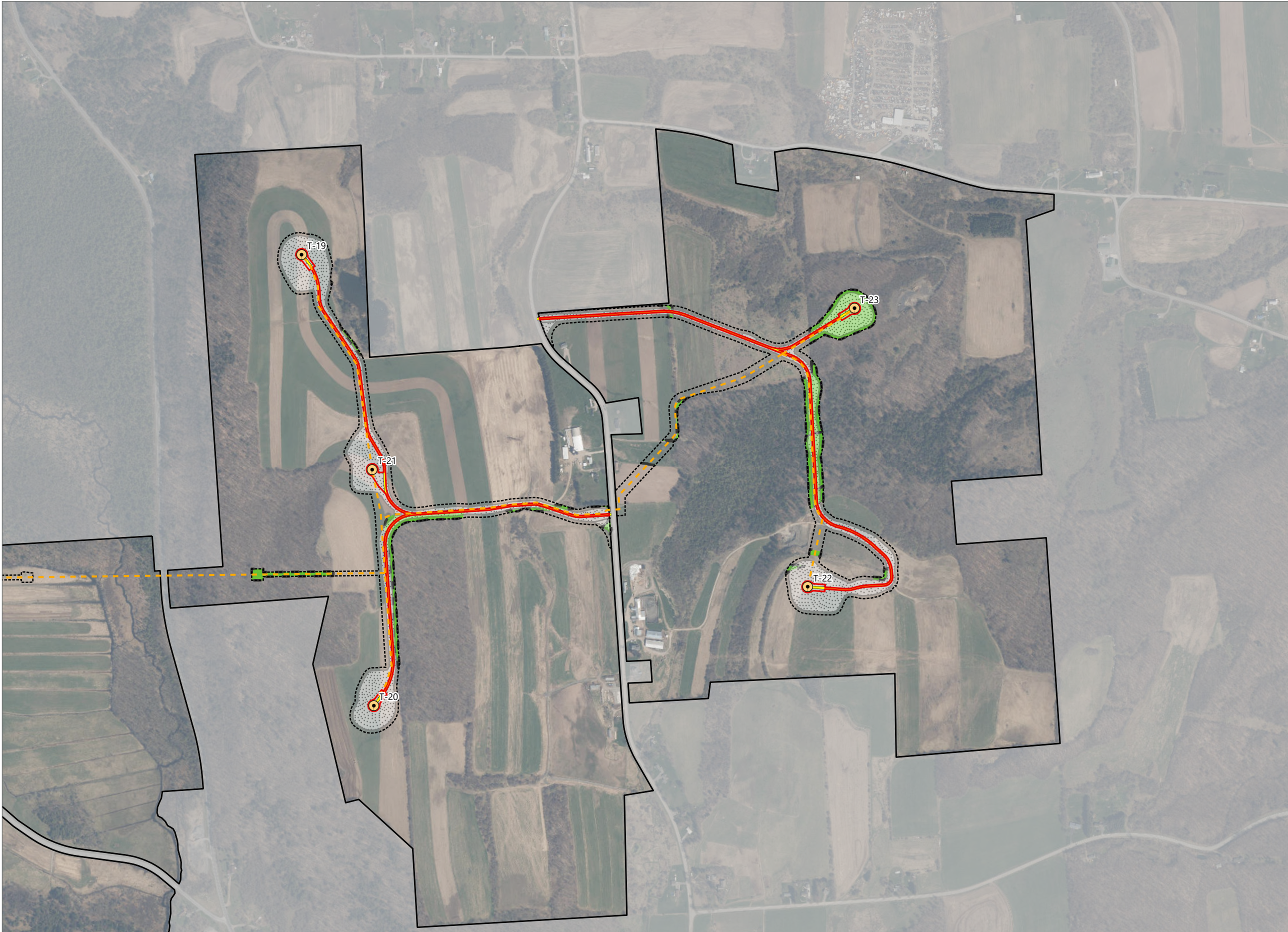
- Wind Turbine
- Access Road
- Collection Line
- Laydown Area
- Limit of Tree Clearing
- Limit of Impervious Surface
- Limit of Grading
- Limit of Disturbance
- Facility Site



Sheet 8 of 10



Prepared August 26, 2024
Basemap: USDA NAIP "2023 New York 60cm" orthoimagery map
service

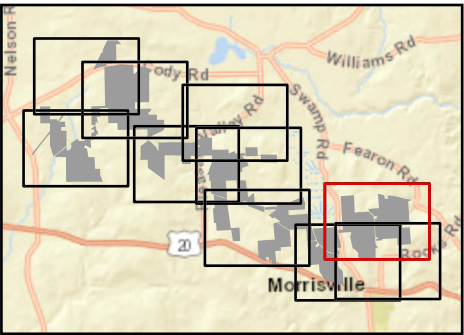


Hoffman Falls Wind

Towns of Eaton, Fenner, Nelson and
Smithfield, Madison County,
New York

**Section 94-c Second Supplement
Matter No. 23-0038**

- Wind Turbine
- Access Road
- Collection Line
- Limit of Tree Clearing
- Limit of Impervious Surface
- Limit of Grading
- Limit of Disturbance
- Facility Site

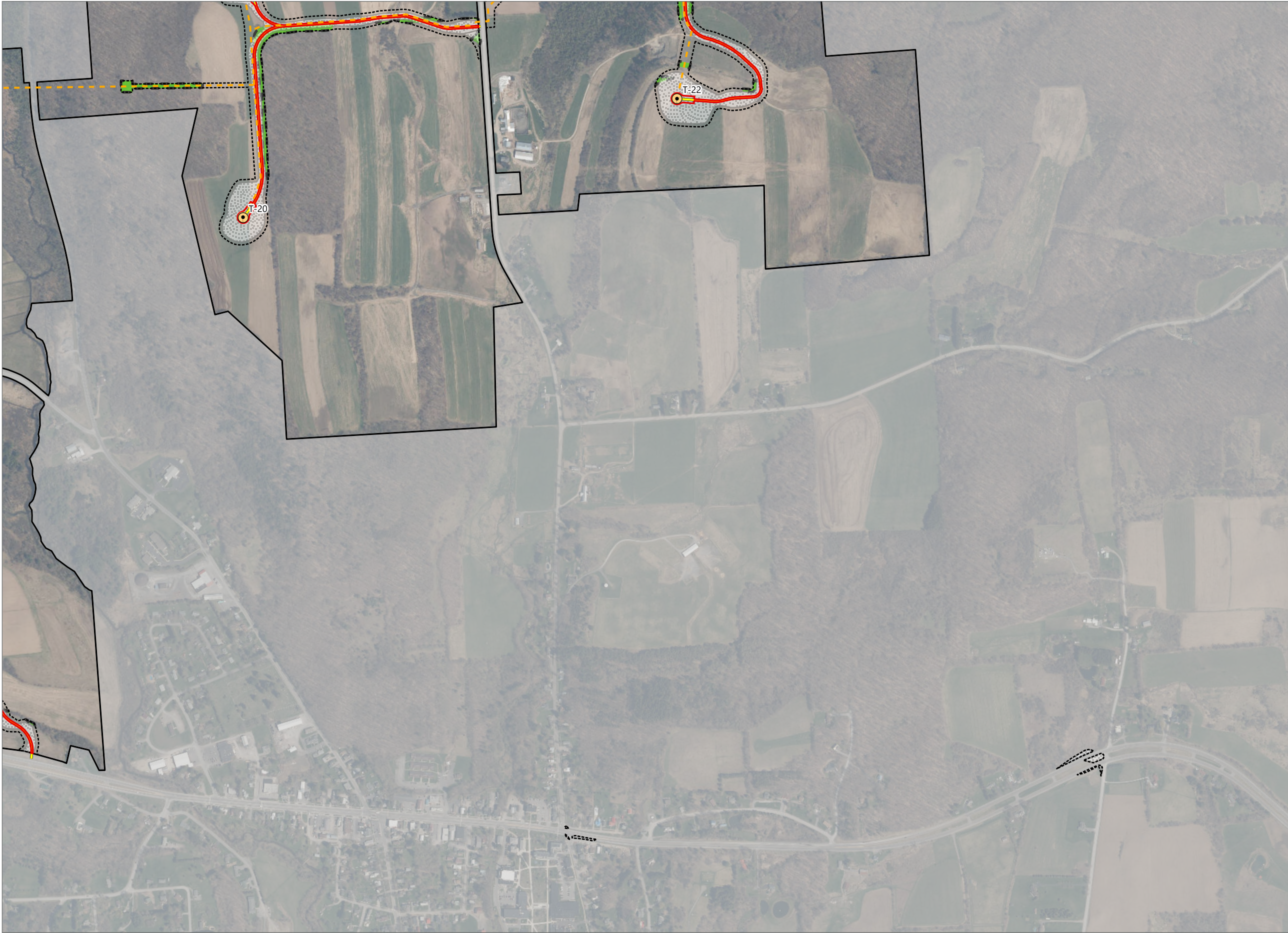


Sheet 9 of 10



0 250 500 1,000
Feet

Prepared August 26, 2024
Basemap: USDA NAIP "2023 New York 60cm" orthoimagery map
service

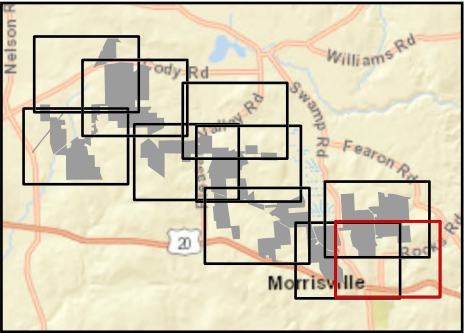


Hoffman Falls Wind

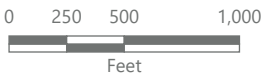
Towns of Eaton, Fenner, Nelson and
Smithfield, Madison County,
New York

**Section 94-c Second Supplement
Matter No. 23-0038**

- Wind Turbine
- Access Road
- Collection Line
- Limit of Tree Clearing
- Limit of Impervious Surface
- Limit of Grading
- Limit of Disturbance
- Facility Site



Sheet 10 of 10



Prepared August 26, 2024
Basemap: USDA NAIP "2023 New York 60cm" orthoimagery map
service