



**Ridge View Solar Energy Center
Town of Hartland, Niagara County
Permit Application No. 23-00063**

**Wetlands Jurisdictional Determination
December 23, 2024**

Pursuant to § 1100-1.3(e)(2), Ridge View Solar Energy Center, LLC a subsidiary of EDF Renewables Development, Inc., provided a draft wetlands delineation report entitled “Wetland and Stream Delineation Report” and dated October 2024, as well as associated photographs and GIS shapefiles received October 23, 2024, for the proposed Ridge View Solar Energy Center located in Niagara County, New York.

Pursuant to § 1100-1.3(e)(4), the Office of Renewable Energy Siting (the Office or ORES), in consultation with the New York State Department of Environmental Conservation (NYSDEC), hereby provides specific jurisdictional determinations for state-regulated wetlands identified in the draft wetland delineation report and shapefiles in Attachment A and Attachment B. The information provided in Attachment A and Attachment B will be necessary for developing Exhibit 14 (§1100-2.15) in support of an application to the Office for a major renewable energy facility.

Please note that this determination only applies to major renewable energy facilities as defined by Article VIII of New York Public Service Law and 16 NYCRR Part 1100. This determination does not cover other projects, nor does it cover determinations under other applicable federal, state, or local jurisdictions, such as the Army Corps of Engineer’s regulatory program under Section 404 of the Clean Water Act. If the Applicant has not already done so, the Office recommends the Applicant request a meeting with the US Army Corps of Engineers as soon as possible regarding their potential regulatory jurisdiction over wetlands onsite.

This determination is valid for a period of five years from the date of this letter. After five years, determinations and delineations will be considered expired and subject to change until a new determination or delineation is conducted and the Office extends this determination or issues a new jurisdictional determination.

As a reminder, with respect to both wetlands and waterbodies, the Applicant must first provide a written explanation of how the Facility design avoids impacts to identified natural resources (Exhibit 13 Water Resources and Aquatic Ecology, 16 NYCRR §1100-2.14(b)(5)) (Exhibit 14 Wetlands, 16 NYCRR §1100-2.15(e)). For impacts that cannot be avoided, the Applicant must then provide a written explanation of all efforts taken to minimize impacts of the proposed Facility to the relevant identified natural resources (Exhibit 13 Water Resources and Aquatic Ecology, see e.g., 16 NYCRR §1100-2.14(b)(6) and (c)) (Exhibit 14 Wetlands, 16 NYCRR §1100-2.15(f)).

For impacts which cannot be avoided or minimized, the Applicant must provide the Office with sufficient information to determine whether impact(s) will be mitigated to the maximum extent practicable. While final

details concerning proposed mitigation measures can be deferred to the required pre-construction mitigation plan for each resource area (Exhibit 13 Water Resources and Aquatic Ecology, 16 NYCRR §1100-2.14(b)(7) and Exhibit 14 Wetlands, 16 NYCRR §1100-2.15(g)), a sufficient showing of proposed mitigation measures is required at the application stage for the Office, in consultation with NYSDEC, to make the required determinations in Public Service Law VIII.

Please include in Exhibit 14 an overview of the Office's jurisdictional determination issued in compliance with 19 NYCRR §1100-1.3(e), including a summary table showing the total number and acreage of NYS-regulated wetlands and 100' adjacent areas within the Facility area and areas to be disturbed by construction, including interconnections.

CC: NYSDEC

Attachment A						
Office of Renewable Energy Siting						
Wetland specific jurisdictional determination for wetlands from draft wetland and waterbodies delineation report						
Wetland Delineation ID ¹	Acreage	Cover Type	Category ²	State Wetland ID	Wetland Classification	Changes ³
33-W001	0.85	PSS	Unmapped >12.4	Unmapped	4	Contiguous w/ wetland 33-W007
33-W005	0.41	PEM	Mapped	BA-25	2	
33-W005	5.66	PFO	Mapped	BA-25	2	
33-W007	6.97	PEM	Unmapped >12.4	Unmapped	4	Contiguous w/ wetland 33-W001
33-W007	6.46	PFO	Unmapped >12.4	Unmapped	4	Contiguous w/ wetland 33-W001
33-W007	20.55	PSS	Unmapped >12.4	Unmapped	4	Contiguous w/ wetland 33-W001
33-W008	3.42	PEM	Mapped	BA-14	3	
33-W008	1.09	PFO	Mapped	BA-14	3	
33-W008	44.29	PSS	Mapped	BA-14	3	
33-W020	0.68	PEM	Mapped	BA-7	3	
33-W020	2.23	PFO	Mapped	BA-7	3	
33-W020	5.19	PSS	Mapped	BA-7	3	
33-W021	2.64	PEM	Mapped	BA-7	3	
33-W021	1.01	PFO	Mapped	BA-7	3	
33-W028	2.23	PEM	Unmapped >12.4	Unmapped	4	Contiguous w/ wetland 33-W033, FA-WL-021
33-W028	3.28	PFO	Unmapped >12.4	Unmapped	4	Contiguous w/ wetland 33-W033, FA-WL-021
33-W028	0.64	PSS	Unmapped >12.4	Unmapped	4	Contiguous w/ wetland 33-W033, FA-WL-021

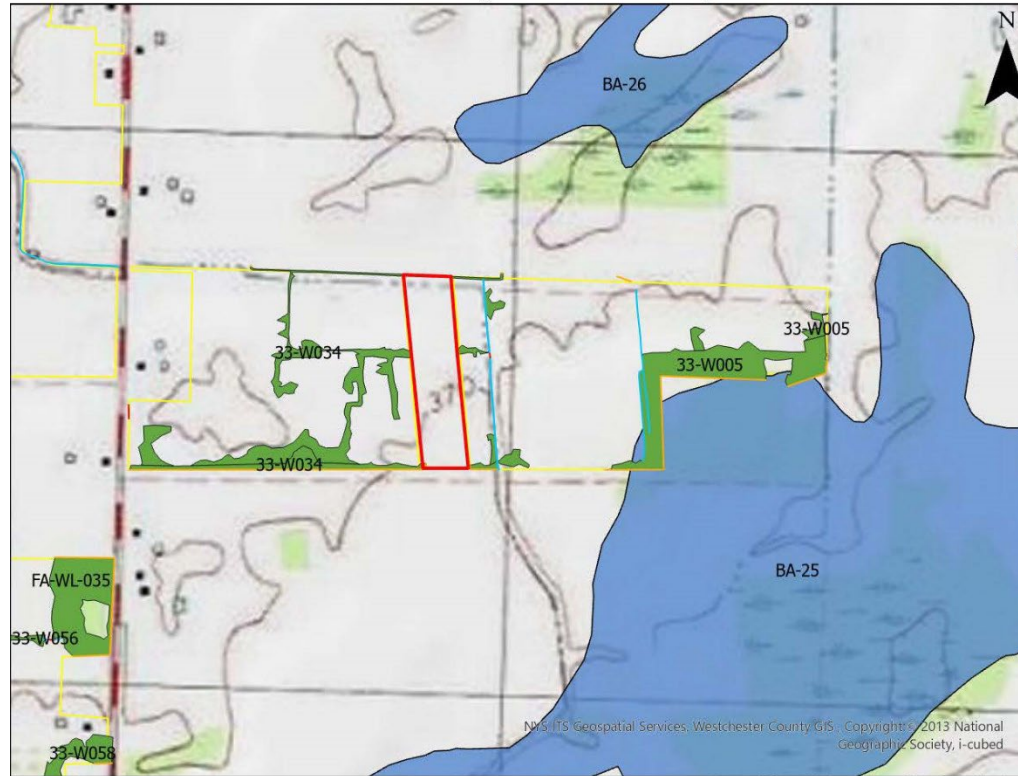
33-W033	7.54	PSS	Unmapped >12.4	Unmapped	4	Contiguous w/ wetland 33-W028, FA-WL-021
33-W034	.09	PEM	Mapped	BA-26	3	Jurisdiction stops at transmission line ROW
33-W034	.2	PEM	Mapped	BA-26	3	Jurisdiction stops at transmission line ROW
33-W034	5.06	PEM	Mapped	BA-25	2	Jurisdiction stops at transmission line ROW
33-W034	1.6	PSS	Mapped	BA-25	2	Jurisdiction stops at transmission line ROW
33-W037	0.27	POW	Unmapped >12.4	Unmapped	4	Contiguous w/ wetland 33-W039
33-W039	0.53	PEM	Unmapped >12.4	Unmapped	4	Contiguous w/ wetland 33-W037
33-W039	25.82	PFO	Unmapped >12.4	Unmapped	4	Contiguous w/ wetland 33-W037
33-W039	0.08	POW	Unmapped >12.4	Unmapped	4	Contiguous w/ wetland 33-W037
33-W039	1.6	PSS	Unmapped >12.4	Unmapped	4	Contiguous w/ wetland 33-W037
33-W041	0.24	PEM	Unmapped >12.4	Unmapped	4	
33-W041	13.85	PFO	Unmapped >12.4	Unmapped	4	
33-W050	0.3	PEM	Mapped	GA-9	3	
33-W050	36.85	PFO	Mapped	GA-9	3	
33-W050	2.66	POW	Mapped	GA-9	3	
33-W050	4.02	PSS	Mapped	GA-9	3	
33-W053	13.29	PEM	Mapped	GA-9	3	
33-W053	24.1	PFO	Mapped	GA-9	3	
33-W053	3.95	PSS	Mapped	GA-9	3	
33-W056	2.81	PEM	Mapped	BA-17	3	

33-W056	12.62	PFO	Mapped	BA-17	3	
33-W056	0.25	PSS	Mapped	BA-17	3	
33-W058	1.3	PFO	Mapped	BA-17	3	
66-W001	8.13	PEM	Mapped	BA-29	3	
66-W001	12.89	PFO	Mapped	BA-29	3	
66-W001	3.32	PSS	Mapped	BA-29	3	
66-W002	2.63	PEM	Mapped	BA-29	3	
66-W010	0.2	PEM	Unmapped >12.4	Unmapped	4	
66-W010	3.27	PFO	Unmapped >12.4	Unmapped	4	
66-W010	0.05	POW	Unmapped >12.4	Unmapped	4	
66-W013	15.28	PEM	Mapped	BA-7	3	
66-W013	21.71	PFO	Mapped	BA-7, BA-18	3	
66-W013	3.6	PSS	Mapped	BA-7, BA-18	3	
66-W013A	0.23	PEM	Mapped	BA-7	3	
66-W025	2.66	PSS	Mapped	GA-9	3	Contiguous w/ wetlands 33-W050, 33- W053, 66- W027, 66-W033,
66-W027	0.38	PEM	Mapped	GA-9	3	
66-W027	1.3	POW	Mapped	GA-9	3	
66-W027	10.91	PSS	Mapped	GA-9	3	
66-W029	0.49	PEM	Mapped	GA-9	3	
66-W029	0.8	PFO	Mapped	GA-9	3	
66-W029	1.62	PSS	Mapped	GA-9	3	
66-W033	0.07	PEM	Mapped	GA-9	3	
66-W069	0.92	PEM	Mapped	NW--16	3	
66-W069	10.08	PFO	Mapped	NW--16	3	
66-W079	2.05	PEM	Mapped	NW--30	3	
66-W079	7.02	PFO	Mapped	NW--30	3	

FA-WL-001	0.18	PEM	Mapped	NW--16	3	
FA-WL-002	1.27	PFO	Mapped	NW--16	3	
FA-WL-005	0.98	PFO	Mapped	NW--30	3	
FA-WL-008	2.31	PFO	Mapped	NW-30	3	
FA-WL-013	1.33	PEM	Mapped	BA-29	3	
FA-WL-013	1.58	PFO	Mapped	BA-29	3	
FA-WL-014	2.22	PEM	Mapped	BA-29	3	
FA-WL-014	55.99	PFO	Mapped	BA-29	3	
FA-WL-015	1.16	PEM	Mapped	BA-30	3	
FA-WL-015	5.88	PFO	Mapped	BA-30	3	
FA-WL-021	17.99	PFO	Unmapped >12.4	Unmapped	4	Contiguous w/ wetlands 33-W028, 33- W033
FA-WL-032	7.77	PFO	Unmapped >12.4	Unmapped	4	
FA-WL-032	60.02	PSS	Unmapped >12.4	Unmapped	4	
FA-WL-035	0.68	PEM	Mapped	BA-17	3	
FA-WL-035	3.83	PFO	Mapped	BA-17	3	
FA-WL-036	3.43	PFO	Mapped	BA-17	3	
Total Acres:	556.68					
<p>¹ ID assigned by applicant in draft wetland delineation report. ² Includes mapped wetlands and unmapped wetlands with a total area greater than 12.4 acres in size. ³Changes include any minor adjustments to features provided by the applicant</p>						

Attachment B

Ridge View Solar
Location of Minor Changes to Wetland Delineation Report



-  Culvert
-  Streams
-  Wetland Continues
-  Wetlands
-  NY DEC Regulated Wetland
-  Facility Boundary