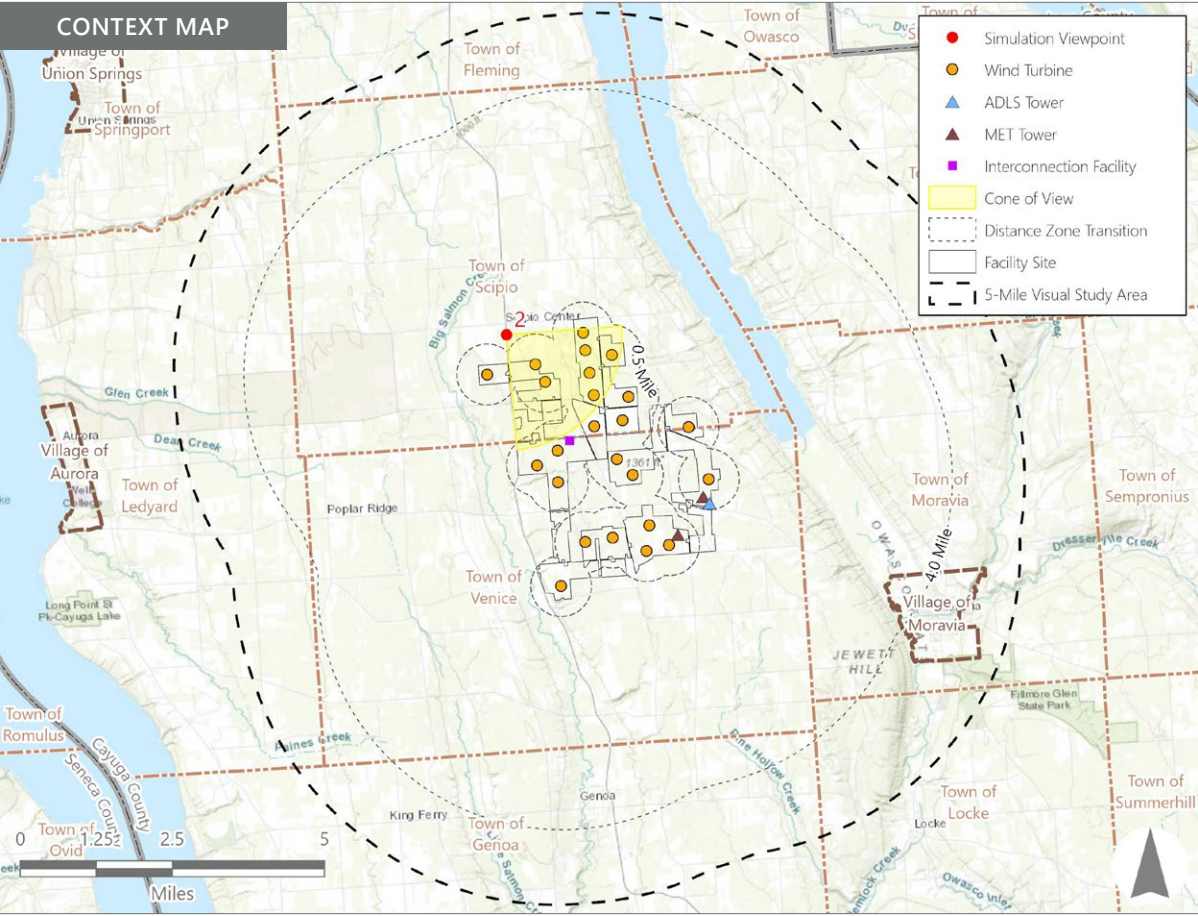
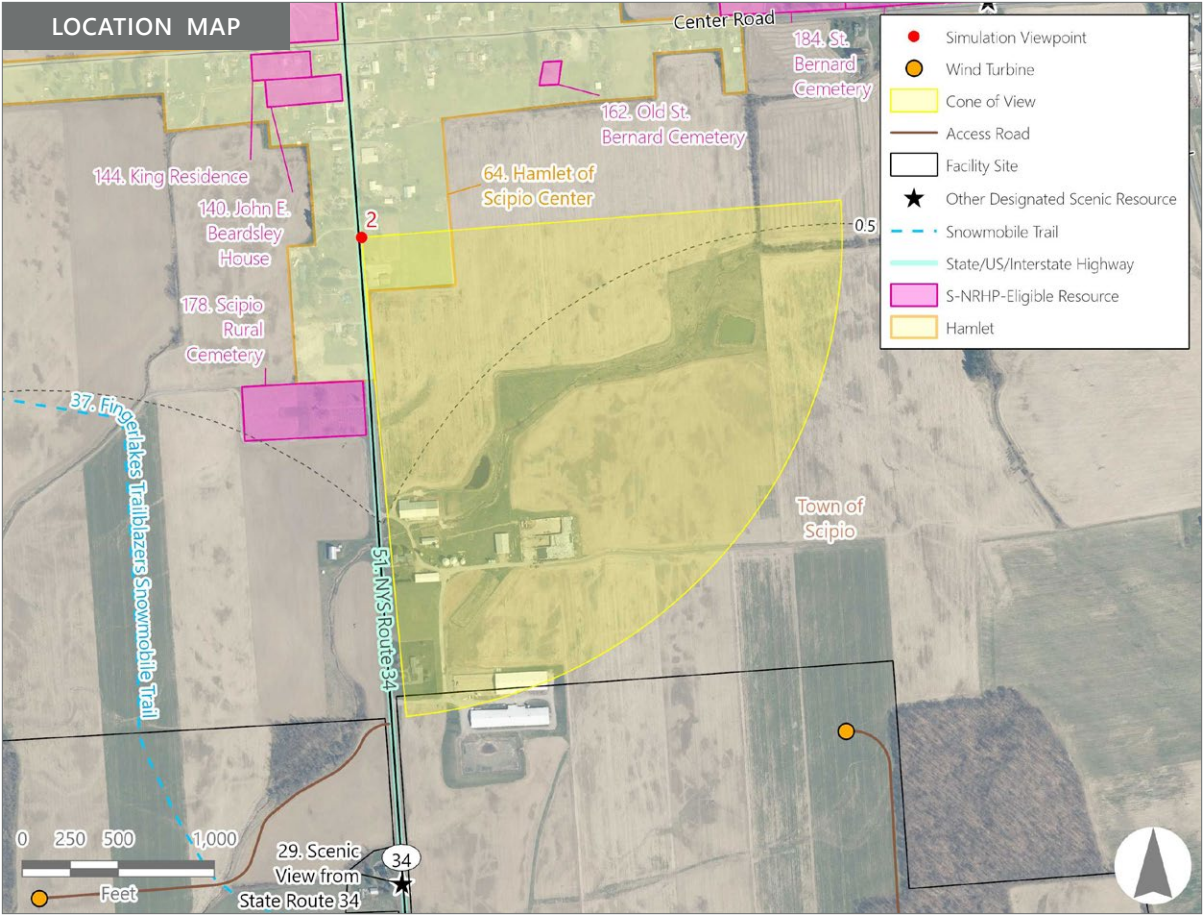


Attachment D

Photosimulations and Wireframe Renderings



Note: The image above is a panorama composition panning clockwise from east (left) to southwest (right).



VIEWPOINT 2

State Route 34

LOCATION INFORMATION

Municipality:	Town of Scipio
County:	Cayuga
Latitude:	42.78082° N
Longitude:	76.55862° W
Wind Turbine Distance*:	0.7 miles
Distance Zone Represented:	Middle Ground
Landscape Similarity Zone:	Hamlet
Viewer/User Group(s):	Local Residents, Through-Travelers, Tourists/Recreational Users

Visually Sensitive Resource(s):

VSR ID # 51	NYS Route 34
VSR ID # 64	Hamlet of Scipio Center

PHOTOGRAPH INFORMATION

Date:	March 12, 2024
Time:	10:17 AM
Camera:	Canon EOS 5D Mark IV
Camera Resolution:	30.4 Megapixels
Lens Focal Length (35 mm sensor equivalent):	50 mm
Camera Elevation:	1,187 feet
Field of View**:	89 degrees
Direction of View:	East to south
Printed Size:	10 inches x 15 inches
Viewing Distance***:	21 inches

NOTES

*Distance as measured from the viewpoint to the closest wind turbine within the simulated photograph's field of view.

**The simulated field of view is comprised of multiple single frame simulations, each with a field of view of 39 degrees.

***The single-frame photograph simulations are at the correct perspective when printed on an 11 inch by 17 inch sheet at full scale, and viewed approximately 21 inches from the eye of the viewer.

Agricola Wind Project

Towns of Venice and Scipio, Cayuga County, New York

Visual Impact Assessment
Appendix 8-A

VIEWPOINT 2

State Route 34



Existing View

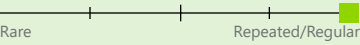
Viewpoint 2 is located on State Route 34 in the Town of Scipio, approximately 0.7 miles from the nearest proposed wind turbine that would be visible in the selected photograph's field of view. This viewpoint occurs in the Hamlet LSZ (Scipio Center), where typical viewers are local residents, through travelers, and tourist/reactional users (sightseers) on the state highway. Views in this general area include large open agricultural fields interspersed with occasional woodlots, rural residences, businesses and agricultural complexes. In the selected panoramic photo, the existing view from the east to the south features a residential lawn in the immediate foreground, backed by an expansive, gently undulating agricultural field that extends to the background. The slightly irregular horizon line is defined by woodlot vegetation at various distances from the viewer. On the right side of the view a relatively new post office building and associated parking lot are present beyond the lawn in the foreground and are a focal point in this view. The post office property is bordered by trees and backed by additional agricultural fields and a large farm complex in the background. The view has an open, rural agricultural character, but lack of variability in topography and vegetation, as well as the dominance of dull tan, brown, and gray colors in the dormant season landscape, results in moderate scenic quality.

Viewpoint Sensitivity¹:

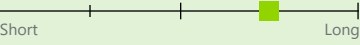
Scenic Quality:



View Frequency:



View Duration:



¹ Viewpoint Sensitivity information is gathered from rating panel results. Scenic Quality and Viewer Exposure indicated in this table reflects all ratings by the rating panel.



Proposed View

With the proposed Facility in place, numerous wind turbines at various distances from the viewer rise above the horizon line in the background. Because they are backlit, the turbines appear very dark against the bright white sky. This color contrast is most striking with the centrally located turbine that is nearest to the viewer, but their dark color makes all of the turbines stand out in this view. Their vertical line and perceived height are compatible with the trees in the foreground, but their scale contrast with the background vegetation is notable. The turbines' novel form and movement will attract viewer attention, making them prominent new focal points in this view. The turbines do not feel out of place in a working agricultural landscape but add some visual clutter and a strong power generation component to the existing view. The presence of the turbines alters the open landscape character of this view and results in a moderate reduction in scenic quality.

Visual Contrast Rating Results Summary

Landscape Component	Score	Rating
Landform	1.5	Minimal/Moderate
Vegetation	1.2	Minimal
Land Use	3.0	Appreciable
Water	N/A	N/A
Sky	2.7	Moderate/Appreciable
Viewer Activity	1.8	Moderate
Overall Average	2.0	Moderate

Agricola Wind Project

Towns of Venice and Scipio, Cayuga County, New York

Visual Impact Assessment
Appendix 8-A



EXISTING VIEW (1 OF 4)

0 1 in. 2 in.
This scale is to ensure the simulation images are printed at the intended size.

VIEWPOINT 2
State Route 34

Agricola Wind Project
Visual Impact Assessment, Appendix 8-A, Attachment D



Note: Printed at actual size, the existing view image is 15 inches wide by 10 inches high. At this size and focal length, the existing view image should be viewed from a distance 21 inches from the eye of the viewer.



PHOTOSIMULATION (1 OF 4)

0 1 in. 2 in.
This scale is to ensure the simulation images are printed at the intended size.

VIEWPOINT 2
State Route 34

Agricola Wind Project
Visual Impact Assessment, Appendix 8-A, Attachment D

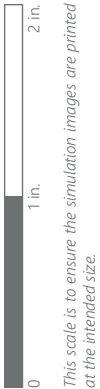


Note: Printed at actual size, the resulting simulation image is 15 inches wide by 10 inches high. At this size and focal length, the simulation should be viewed from a distance 21 inches from the eye of the viewer.

EXISTING VIEW (2 OF 4)



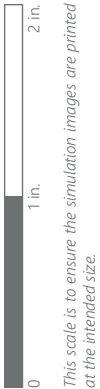
Note: Printed at actual size, the existing view image is 15 inches wide by 10 inches high. At this size and focal length, the existing view image should be viewed from a distance 21 inches from the eye of the viewer.



VIEWPOINT 2
State Route 34



Note: Printed at actual size, the resulting simulation image is 15 inches wide by 10 inches high. At this size and focal length, the simulation should be viewed from a distance 21 inches from the eye of the viewer.



VIEWPOINT 2
State Route 34

Agricola Wind Project
Visual Impact Assessment, Appendix 8-A, Attachment D





Note: Printed at actual size, the existing view image is 15 inches wide by 10 inches high. At this size and focal length, the existing view image should be viewed from a distance 21 inches from the eye of the viewer.



VIEWPOINT 2
State Route 34



Note: Printed at actual size, the resulting simulation image is 15 inches wide by 10 inches high. At this size and focal length, the simulation should be viewed from a distance 21 inches from the eye of the viewer.

0 1 in. 2 in.
This scale is to ensure the simulation images are printed at the intended size.

VIEWPOINT 2
State Route 34

Agricola Wind Project
Visual Impact Assessment, Appendix 8-A, Attachment D





Note: Printed at actual size, the existing view image is 15 inches wide by 10 inches high. At this size and focal length, the existing view image should be viewed from a distance 21 inches from the eye of the viewer.



VIEWPOINT 2
State Route 34



Note: Printed at actual size, the resulting simulation image is 15 inches wide by 10 inches high. At this size and focal length, the simulation should be viewed from a distance 21 inches from the eye of the viewer.

0 1 in. 2 in.
This scale is to ensure the simulation images are printed at the intended size.

VIEWPOINT 2
State Route 34

Agricola Wind Project
Visual Impact Assessment, Appendix 8-A, Attachment D









Note: The image above is a panorama composition panning clockwise from northeast (left) to south (right).

VIEWPOINT 4
State Route 34

LOCATION INFORMATION

Municipality:	Town of Scipio
County:	Cayuga
Latitude:	42.77000° N
Longitude:	76.55800° W
Wind Turbine Distance*:	0.5 miles
Distance Zone Represented:	Foreground
Landscape Similarity Zone:	Agricultural/Rural Residential
Viewer/User Group(s):	Local Residents, Through-Travelers, Tourists/Recreational Users

Visually Sensitive Resource(s):

VSR ID # 37	Fingerlakes Trailblazers Snowmobile Trail
VSR ID # 51	NYS Route 34

PHOTOGRAPH INFORMATION

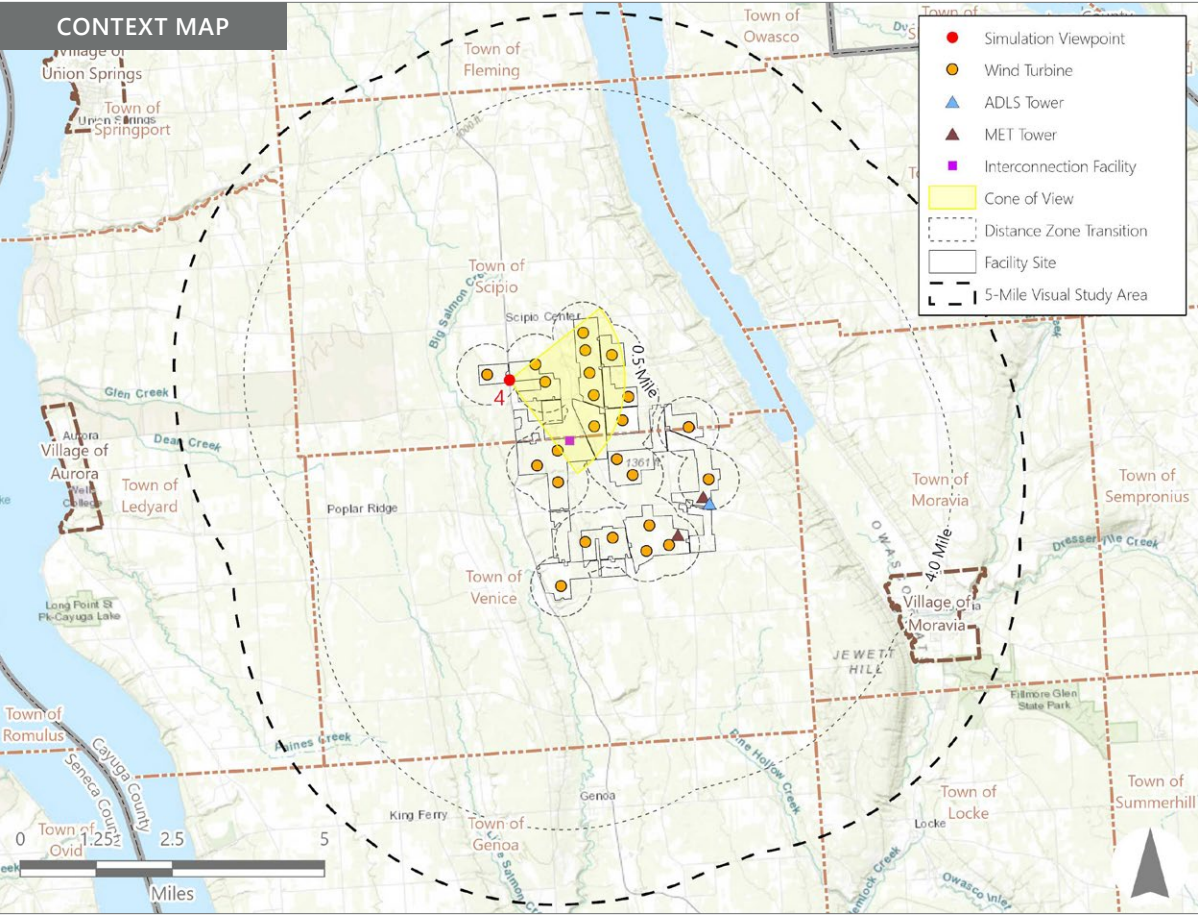
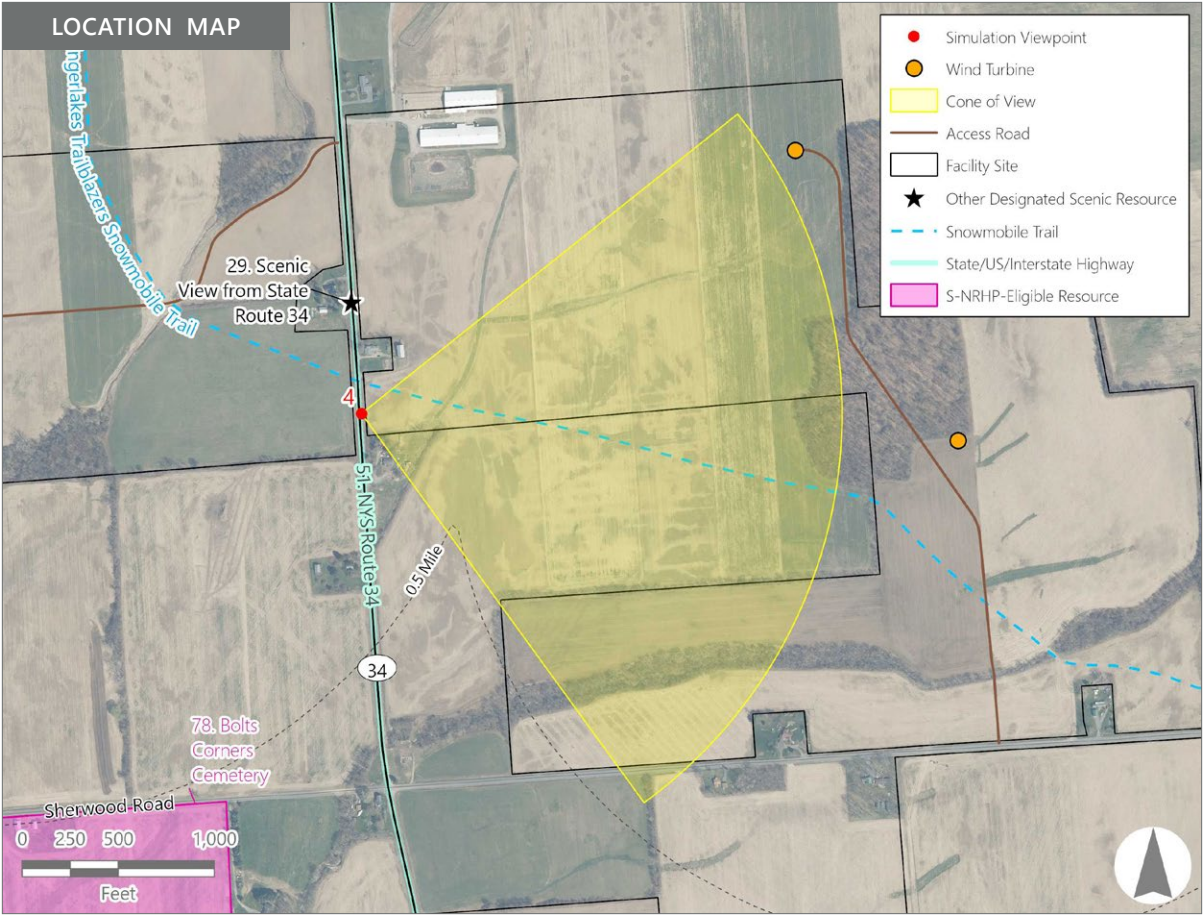
Date:	March 12, 2024
Time:	10:10 AM
Camera:	Canon EOS 5D Mark IV
Camera Resolution:	30.4 Megapixels
Lens Focal Length (35 mm sensor equivalent):	50 mm
Camera Elevation:	1,145 feet
Field of View**:	92 degrees
Direction of View:	Northeast to southeast
Printed Size:	10 inches x 15 inches
Viewing Distance***:	21 inches

NOTES

*Distance as measured from the viewpoint to the closest wind turbine within the simulated photograph's field of view.

**The simulated field of view is comprised of multiple single frame simulations, each with a field of view of 39 degrees.

***The single-frame photograph simulations are at the correct perspective when printed on an 11 inch by 17 inch sheet at full scale, and viewed approximately 21 inches from the eye of the viewer.



Agricola Wind Project

Towns of Venice and Scipio, Cayuga County, New York

Visual Impact Assessment
Appendix 8-A

VIEWPOINT 4

State Route 34

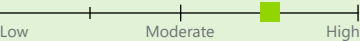


Existing View

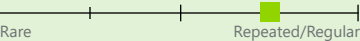
Viewpoint 4 is located on State Route 34 in the Town of Scipio, approximately 0.4 miles from the nearest proposed wind turbine that would be visible in the selected panoramic photograph’s field of view. This viewpoint occurs in the Agricultural/Rural Residential LSZ where typical viewers are through travelers, local residents, and tourist/recreational users (including sightseers and snowmobilers in the winter). Views in this general area include large open agricultural fields interspersed with scattered woodlots, rural residences, and farms. In the selected panoramic photo, the existing view from the northeast to the southeast features a steep roadside embankment in the immediate foreground that rises abruptly to the edge of a harvested cornfield. The open field extends to the background, but because the field is elevated relative to viewer position, the view appears compressed. A central cluster of dormant deciduous trees and a cluster of evergreens to the right are prominent features of the middle ground. As a result of backlighting, the trees appear dark and present strong contrast with the bright white sky behind them. The background features a large deciduous woodlot that appears as a dark horizontal mass on the horizon. The view has an open agricultural character, but the level topography, dull color palette, and compressed character of the view somewhat reduces its scenic quality.

Viewpoint Sensitivity¹:

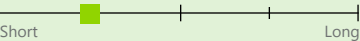
Scenic Quality:



View Frequency:



View Duration:



¹ Viewpoint Sensitivity information is gathered from rating panel results. Scenic Quality and Viewer Exposure indicated in this table reflects all ratings by the rating panel.



Proposed View

With the proposed Facility in place, wind turbines are now present at various distances across the full field of view. The two nearest turbines are close enough that details of their nacelles and blades are visible. Their vertical line and perceived height are consistent with the foreground trees in this view, but the turbines’ scale contrast with the vegetation in the background woodlot is notable. Scale contrast presented by the more distant turbines is less striking. The turbines are backlit by the sun, which results in fairly strong color contrast with the light blue/white sky. This, along with their novel form and movement will attract viewer attention. The turbines add some visual clutter to the view, but also offer an element of interest in a view that currently lacks high scenic quality or interesting focal points. The presence of the turbines alters the open landscape character of this view and results in a moderate reduction in scenic quality

Visual Contrast Rating Results Summary

Landscape Component	Score	Rating
Landform	1.7	Minimal/Moderate
Vegetation	1.5	Minimal/Moderate
Land Use	2.8	Appreciable
Water	N/A	N/A
Sky	3.0	Appreciable
Viewer Activity	2.3	Moderate/Appreciable
Overall Average	2.3	Moderate/Appreciable

Agricola Wind Project

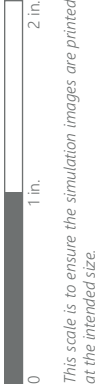
Towns of Venice and Scipio, Cayuga County, New York

Visual Impact Assessment
Appendix 8-A

EXISTING VIEW (1 OF 4)



Note: Printed at actual size, the existing view image is 15 inches wide by 10 inches high. At this size and focal length, the existing view image should be viewed from a distance 21 inches from the eye of the viewer.



VIEWPOINT 4
State Route 34

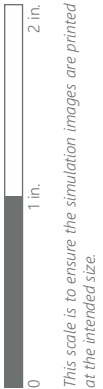
Agricola Wind Project
Visual Impact Assessment, Appendix 8-A, Attachment D





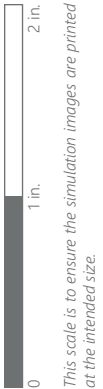
Note: Printed at actual size, the resulting simulation image is 15 inches wide by 10 inches high. At this size and focal length, the simulation should be viewed from a distance 21 inches from the eye of the viewer.

EXISTING VIEW (2 OF 4)



VIEWPOINT 4
State Route 34

Note: Printed at actual size, the existing view image is 15 inches wide by 10 inches high. At this size and focal length, the existing view image should be viewed from a distance 21 inches from the eye of the viewer.

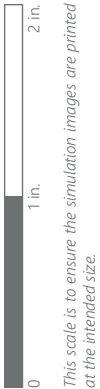


VIEWPOINT 4
State Route 34

Note: Printed at actual size, the resulting simulation image is 15 inches wide by 10 inches high. At this size and focal length, the simulation should be viewed from a distance 21 inches from the eye of the viewer.



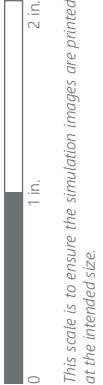
Note: Printed at actual size, the existing view image is 15 inches wide by 10 inches high. At this size and focal length, the existing view image should be viewed from a distance 21 inches from the eye of the viewer.



VIEWPOINT 4
State Route 34



Note: Printed at actual size, the resulting simulation image is 15 inches wide by 10 inches high. At this size and focal length, the simulation should be viewed from a distance 21 inches from the eye of the viewer.



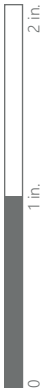
VIEWPOINT 4
State Route 34



EXISTING VIEW (4 OF 4)

VIEWPOINT 4
State Route 34

Agricola Wind Project
Visual Impact Assessment, Appendix 8-A, Attachment D



This scale is to ensure the simulation images are printed at the intended size.

Note: Printed at actual size, the existing view image is 15 inches wide by 10 inches high. At this size and focal length, the existing view image should be viewed from a distance 21 inches from the eye of the viewer.

PHOTOSIMULATION (4 OF 4)



0 1 in. 2 in.
This scale is to ensure the simulation images are printed at the intended size.

VIEWPOINT 4
State Route 34

Agricola Wind Project
Visual Impact Assessment, Appendix 8-A, Attachment D



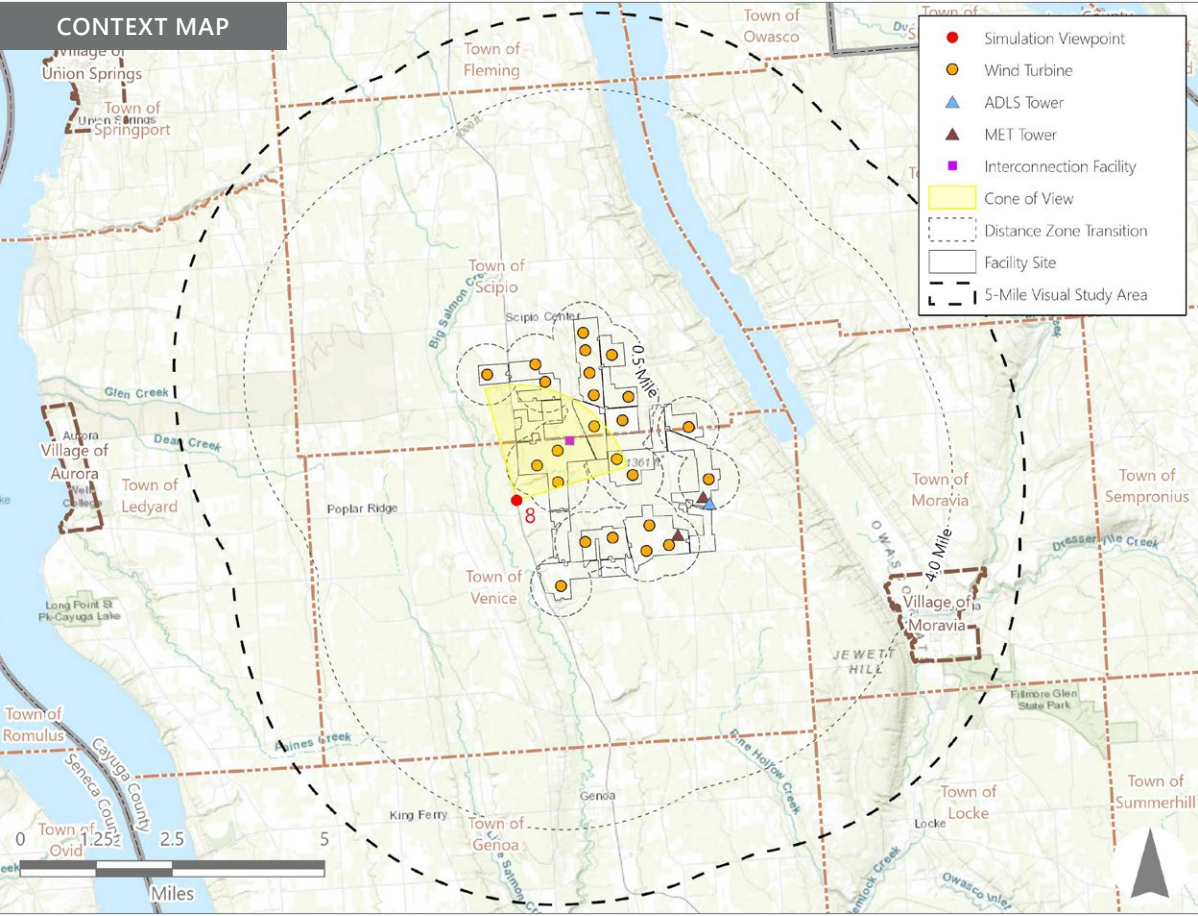
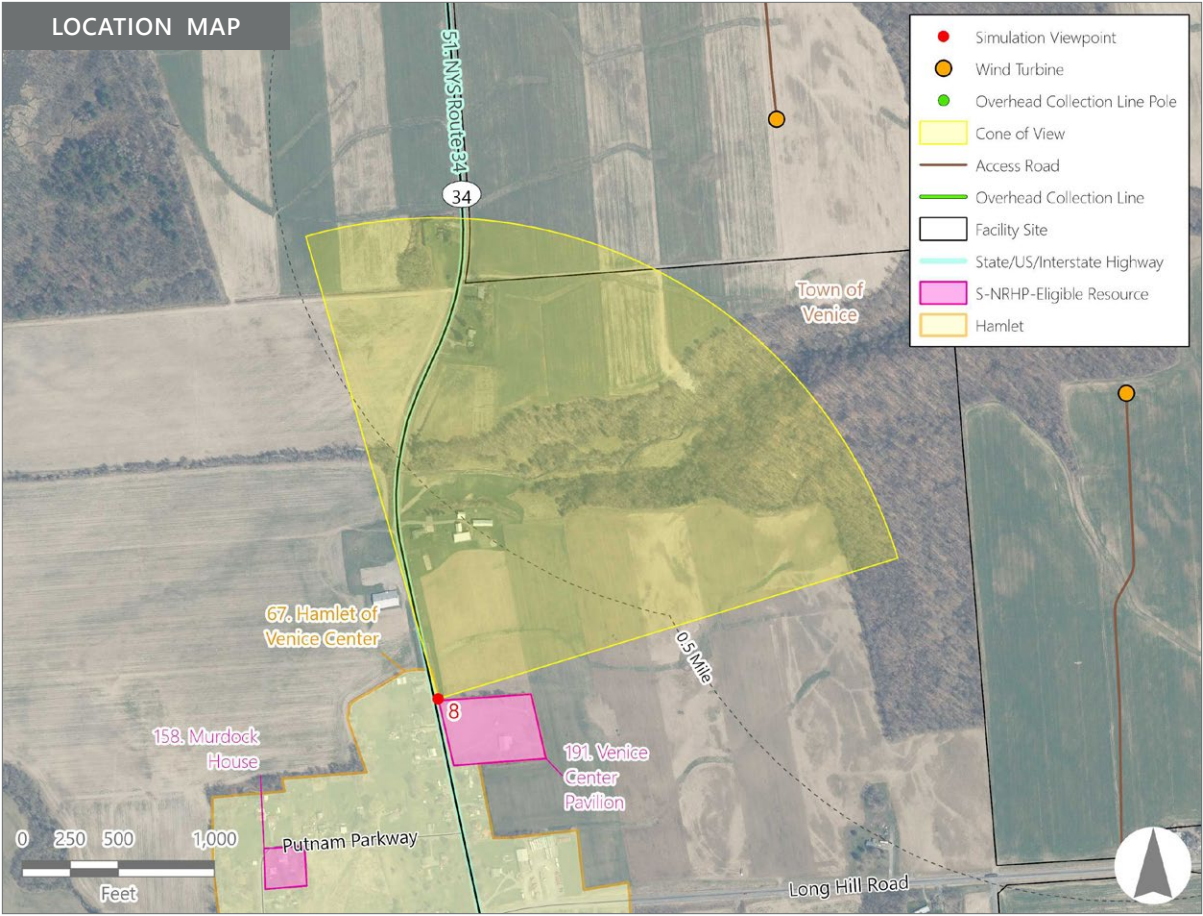
Note: Printed at actual size, the resulting simulation image is 15 inches wide by 10 inches high. At this size and focal length, the simulation should be viewed from a distance 21 inches from the eye of the viewer.







Note: The image above is a panorama composition panning clockwise from north (left) to east (right).



VIEWPOINT 8

State Route 34

LOCATION INFORMATION

Municipality:	Town of Venice
County:	Cayuga
Latitude:	42.74138° N
Longitude:	76.55666° W
Wind Turbine Distance*:	0.7 miles
Distance Zone Represented:	Middle Ground
Landscape Similarity Zone:	Hamlet
Viewer/User Group(s):	Local Residents, Through-Travelers, Tourists/Recreational Users

Visually Sensitive Resource(s):	
VSR ID # 51	NYS Route 34
VSR ID # 67	Hamlet of Venice Center
VSR ID # 191	Venice Center Pavilion

PHOTOGRAPH INFORMATION

Date:	March 12, 2024
Time:	11:47 AM
Camera:	Canon EOS 5D Mark IV
Camera Resolution:	30.4 Megapixels
Lens Focal Length (35 mm sensor equivalent):	50 mm
Camera Elevation:	1,000 feet
Field of View**:	89 degrees
Direction of View:	North-northwest to east-northeast
Printed Size:	10 inches x 15 inches
Viewing Distance***:	21 inches

NOTES

*Distance as measured from the viewpoint to the closest wind turbine within the simulated photograph's field of view.

**The simulated field of view is comprised of multiple single frame simulations, each with a field of view of 39 degrees.

***The single-frame photograph simulations are at the correct perspective when printed on an 11 inch by 17 inch sheet at full scale, and viewed approximately 21 inches from the eye of the viewer.

VIEWPOINT 8

State Route 34



Existing View

Viewpoint 8 is located on State Route 34 in the Town of Venice, approximately 0.7 miles from the nearest proposed wind turbine that would be visible in the selected photograph's field of view. This viewpoint occurs in the Hamlet LSZ (Venice Center) where typical viewers are local residents and through travelers. Views in this general area include large open agricultural fields interspersed with woodlots, scattered rural residences, and farms. In the selected panoramic photo, the existing view from the north to the east features a mowed road shoulder in the immediate foreground backed by an open, undulating, harvested agricultural field that extends from the foreground to the background. The field rises gradually to a gently rolling line of trees that define the horizon and block views of more distant landscape features. Buildings associated with a background farm complex are visible in front of the background tree line on the left. Their light color and occurrence as the only developed features make these structures a focal point in the view. The view has an open, expansive feel and a working agricultural character. The undulating topography and irregular horizon line add visual interest to the view, but lack of foreground and middle ground features result in moderate scenic quality.

Viewpoint Sensitivity¹:

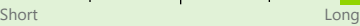
Scenic Quality:



View Frequency:



View Duration:



¹ Viewpoint Sensitivity information is gathered from rating panel results. Scenic Quality and Viewer Exposure indicated in this table reflects all ratings by the rating panel.



Proposed View

With the proposed Facility in place, three wind turbines have been added to the panoramic view. The turbines occur beyond the background tree line that forms the visible horizon but are still close enough that details of their construction can be seen. Contrast of the turbines' scale and form with the background vegetation is strong, but their white color is consistent with the light-colored farm structures in the view, and when in direct sunlight, minimizes their color contrast with the light blue sky. The turbines become new focal points in the view but are compatible with the working agricultural character of the landscape. They add an element of interest to the view and despite their proximity, the limited number of visible turbines reduces the Facility's impact on scenic quality.

Visual Contrast Rating Results Summary

Landscape Component	Score	Rating
Landform	1.3	Minimal/Moderate
Vegetation	1.8	Moderate
Land Use	1.8	Moderate
Water	N/A	N/A
Sky	2.3	Moderate/Appreciable
Viewer Activity	2.0	Moderate
Overall Average	1.9	Moderate

Agricola Wind Project

Towns of Venice and Scipio, Cayuga County, New York

Visual Impact Assessment
Appendix 8-A



Note: Printed at actual size, the existing view image is 15 inches wide by 10 inches high. At this size and focal length, the existing view image should be viewed from a distance 21 inches from the eye of the viewer.



VIEWPOINT 8
State Route 34



Note: Printed at actual size, the resulting simulation image is 15 inches wide by 10 inches high. At this size and focal length, the simulation should be viewed from a distance 21 inches from the eye of the viewer.

0 1 in. 2 in.
This scale is to ensure the simulation images are printed at the intended size.

VIEWPOINT 8
State Route 34

Agricola Wind Project
Visual Impact Assessment, Appendix 8-A, Attachment D





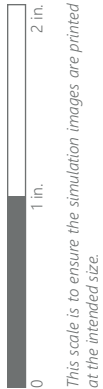
Note: Printed at actual size, the existing view image is 15 inches wide by 10 inches high. At this size and focal length, the existing view image should be viewed from a distance 21 inches from the eye of the viewer.



VIEWPOINT 8
State Route 34



Note: Printed at actual size, the resulting simulation image is 15 inches wide by 10 inches high. At this size and focal length, the simulation should be viewed from a distance 21 inches from the eye of the viewer.

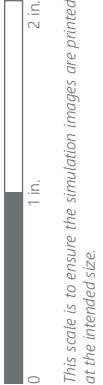


VIEWPOINT 8
State Route 34

EXISTING VIEW (3 OF 3)



Note: Printed at actual size, the existing view image is 15 inches wide by 10 inches high. At this size and focal length, the existing view image should be viewed from a distance 21 inches from the eye of the viewer.



VIEWPOINT 8
State Route 34

Agricola Wind Project
Visual Impact Assessment, Appendix 8-A, Attachment D





Note: Printed at actual size, the resulting simulation image is 15 inches wide by 10 inches high. At this size and focal length, the simulation should be viewed from a distance 21 inches from the eye of the viewer.

0

1 in.

2 in.

This scale is to ensure the simulation images are printed at the intended size.

VIEWPOINT 8
State Route 34





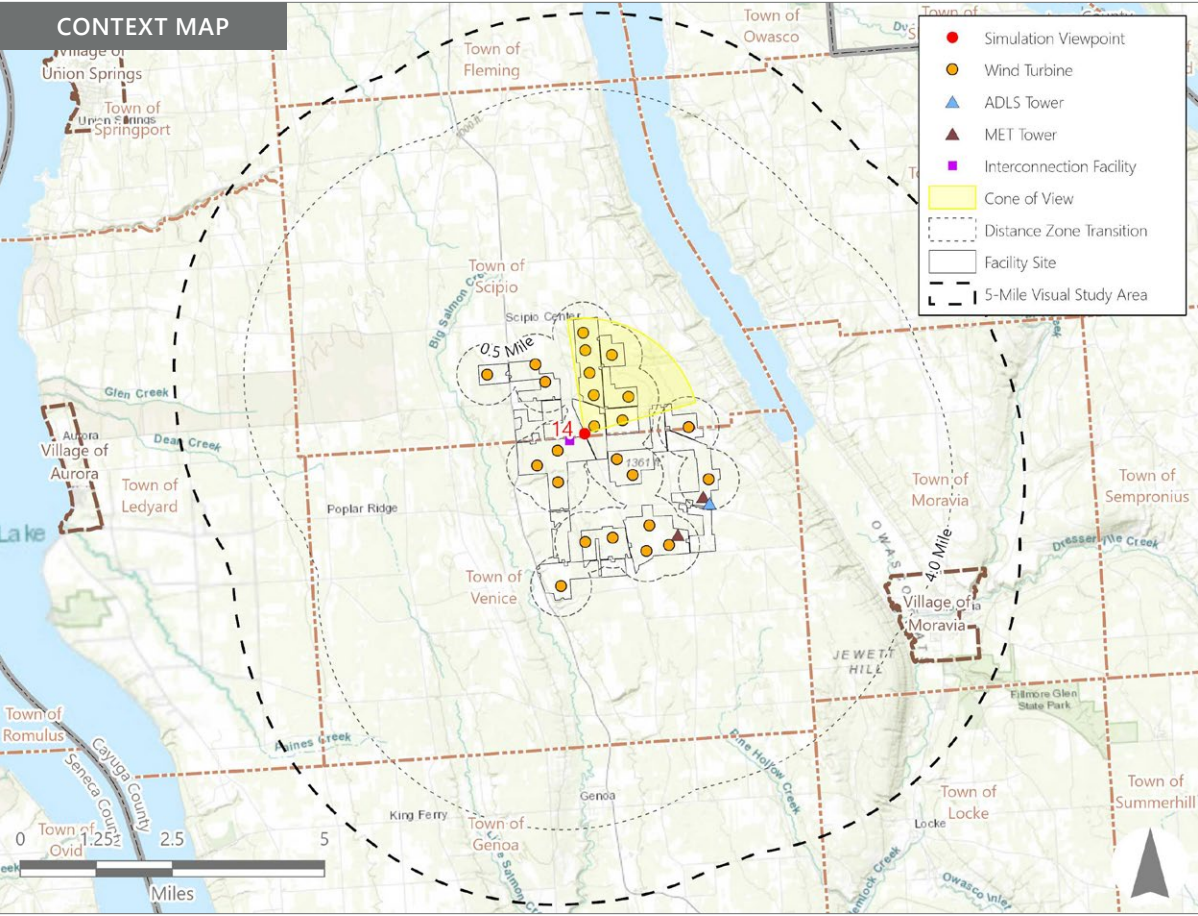
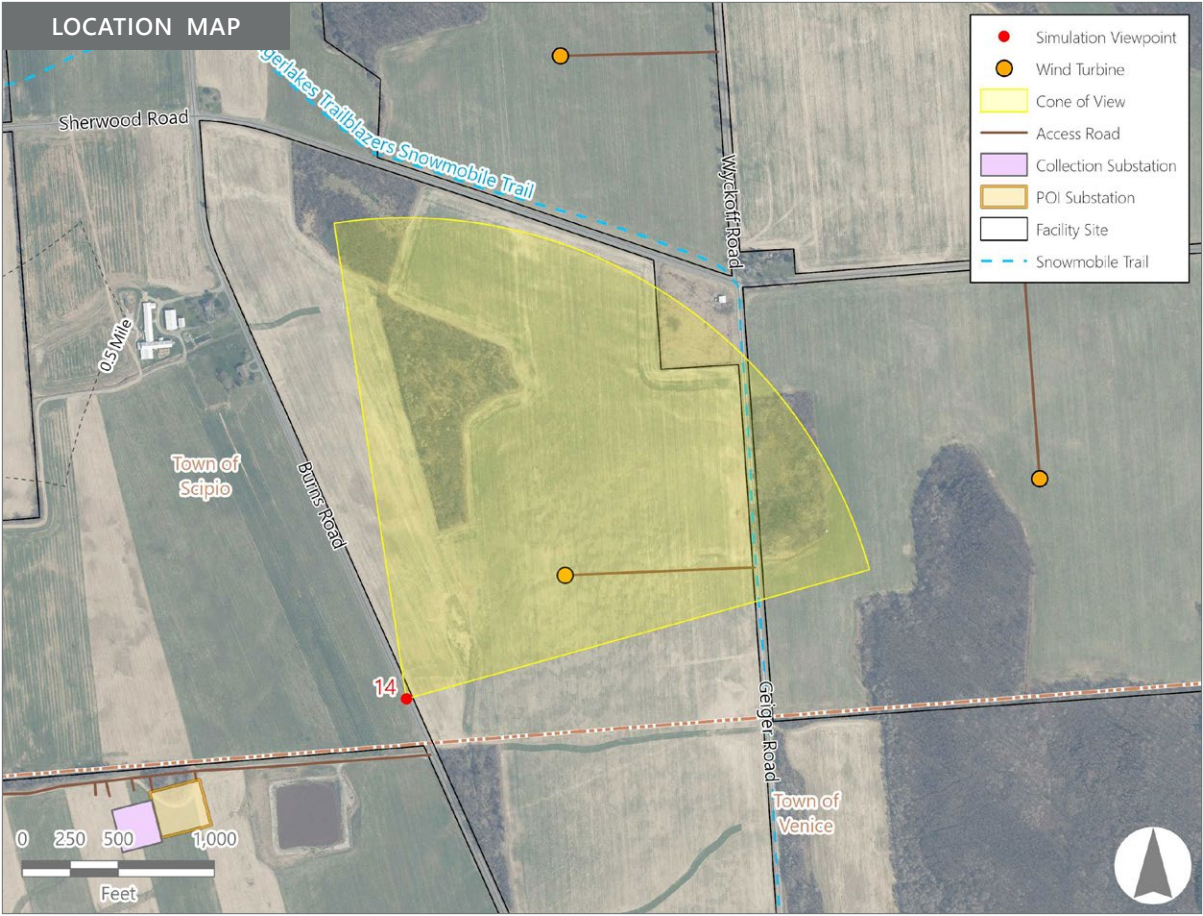


Note: The image above is a panorama composition panning clockwise from northwest (left) to southeast (right).

VIEWPOINT 14A
Burns Road

LOCATION INFORMATION

Municipality:	Town of Scipio
County:	Cayuga
Latitude:	42.75683° N
Longitude:	76.53422° W
Wind Turbine Distance*:	1,045 feet
Distance Zone Represented:	Foreground
Landscape Similarity Zone:	Agricultural/Rural Residential
Viewer/User Group(s):	Local Residents
Visually Sensitive Resource(s):	None Identified



PHOTOGRAPH INFORMATION

Date:	March 12, 2024
Time:	10:36 AM
Camera:	Canon EOS 5D Mark IV
Camera Resolution:	30.4 Megapixels
Lens Focal Length (35 mm sensor equivalent):	50 mm
Camera Elevation:	1,301 feet
Field of View**:	83 degrees
Direction of View:	North to east-northeast
Printed Size:	10 inches x 15 inches
Viewing Distance***:	21 inches

NOTES

*Distance as measured from the viewpoint to the closest wind turbine within the simulated photograph's field of view.

**The simulated field of view is comprised of multiple single frame simulations, each with a field of view of 39 degrees.

***The single-frame photograph simulations are at the correct perspective when printed on an 11 inch by 17 inch sheet at full scale, and viewed approximately 21 inches from the eye of the viewer.

VIEWPOINT 14A

Burns Road



Existing View

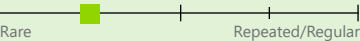
Viewpoint 14 is located on Burns Road in the Town of Scipio, approximately 0.2 miles from the nearest proposed wind turbine that would be visible in the selected photograph’s field of view. This viewpoint occurs on a local roadway in the Agricultural/ Rural Residential LSZ where typical viewers are local residents. Views in this general area include large open agricultural fields interspersed with dense woodlots and scattered rural residences. In the selected panoramic photo, the existing view from the north to the east features a sliver of Burns Road as it angles northwest in the immediate foreground. The road is backed by a large harvested agricultural field with gently rolling topography. As the field extends into the middle ground, a dense stand of dormant trees occupies the left side of the view. The field rises to a high point in the background, and blocks views of more distant landscape features. The horizon is defined by a broken hedgerow that meets with a denser woodlot on the right side of the view. Three steel lattice structures (met towers and an ADLS tower) rise above the trees on the horizon in the center of the view. Although distant, their presence as the only built features, and their red and white color, draw the viewer’s attention to the center of the view and serve as a distant focal point. The view has an open, expansive feel and strong agricultural character. However, the lack of foreground features, lack of strong variation in topography, and generally uniform brown colors of the vegetation, result in relatively moderate scenic quality.

Viewpoint Sensitivity¹:

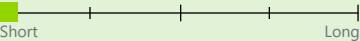
Scenic Quality:



View Frequency:



View Duration:



¹ Viewpoint Sensitivity information is gathered from rating panel results. Scenic Quality and Viewer Exposure indicated in this table reflects all ratings by the rating panel.



Proposed View

With the proposed Facility in place, numerous turbines have been added to the panoramic view, including one that is so close that it extends into the sky beyond the photograph’s vertical field of view. Their proximity, and their height above the tree line, accentuates the turbines’ size and scale contrast with the existing vegetation. Because the existing landscape lacks strong focal points (other than the background lattice structures), the turbines are now the dominant, character defining element of the view. Although still clearly in agricultural use, the view is now of a wind farm rather than open farmland. The turbines appear organized and well-spaced, and do not add significant visual clutter to the view. However, they reduce the open, expansive feel of the landscape. The relatively low scenic quality of the existing view is not significantly affected.

Visual Contrast Rating Results Summary

Landscape Component	Score	Rating
Landform	2.2	Moderate
Vegetation	2.2	Moderate
Land Use	2.3	Moderate/Appreciable
Water	N/A	N/A
Sky	2.7	Moderate/Appreciable
Viewer Activity	2.2	Moderate
Overall Average	2.3	Moderate/Appreciable

Agricola Wind Project

Towns of Venice and Scipio, Cayuga County, New York

Visual Impact Assessment
Appendix 8-A