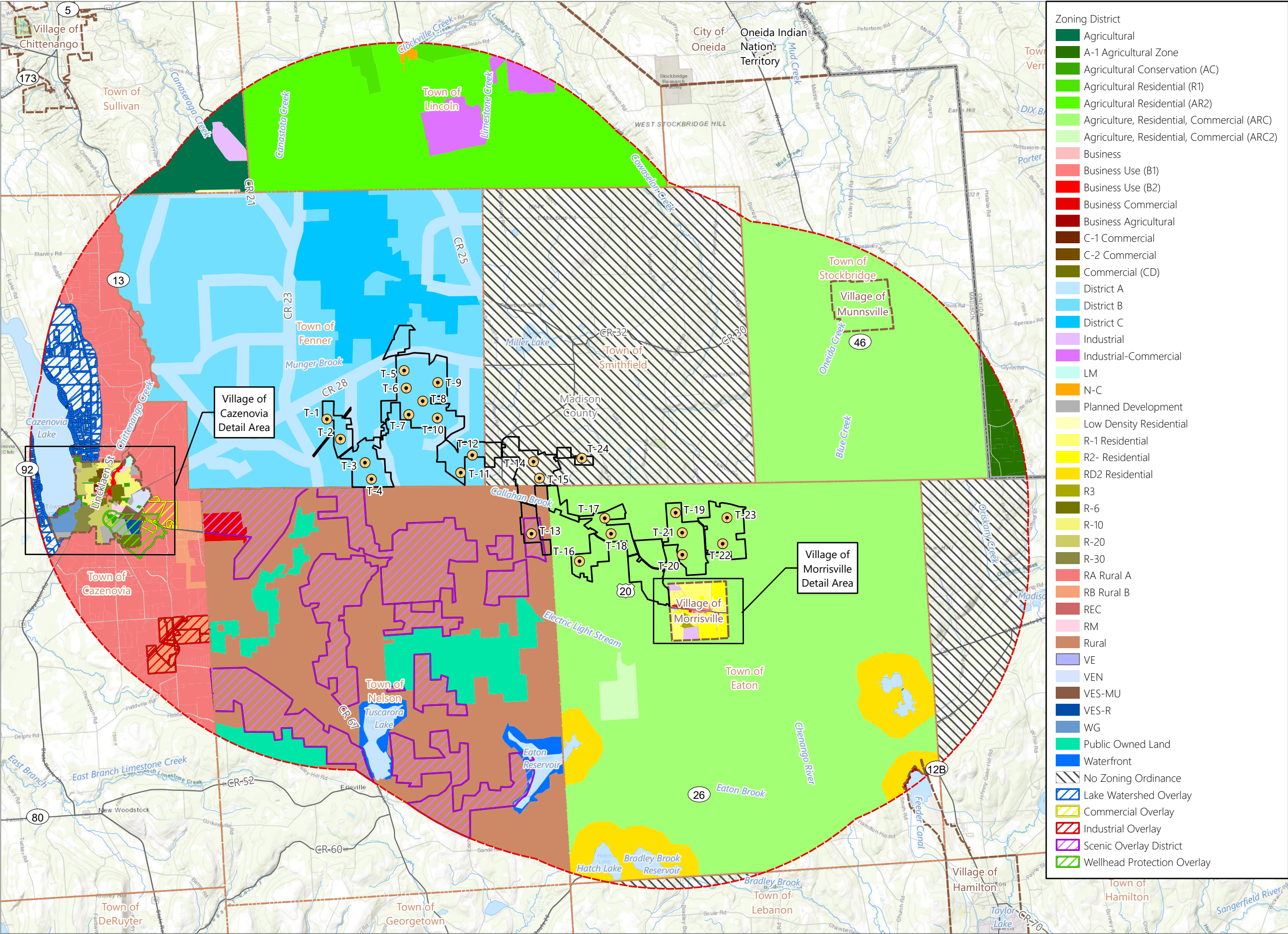


Figure 3-6. Zoning Districts - Revision 2



## Hoffman Falls Wind

Towns of Eaton, Fenner, Nelson and  
Smithfield, Madison County,  
New York

**Section 94-c Second Supplement  
Matter No. 23-0038**

### Facility Components

- Wind Turbine
- Facility Site
- 5-Mile Study Area



0 0.5 1 2  
Miles

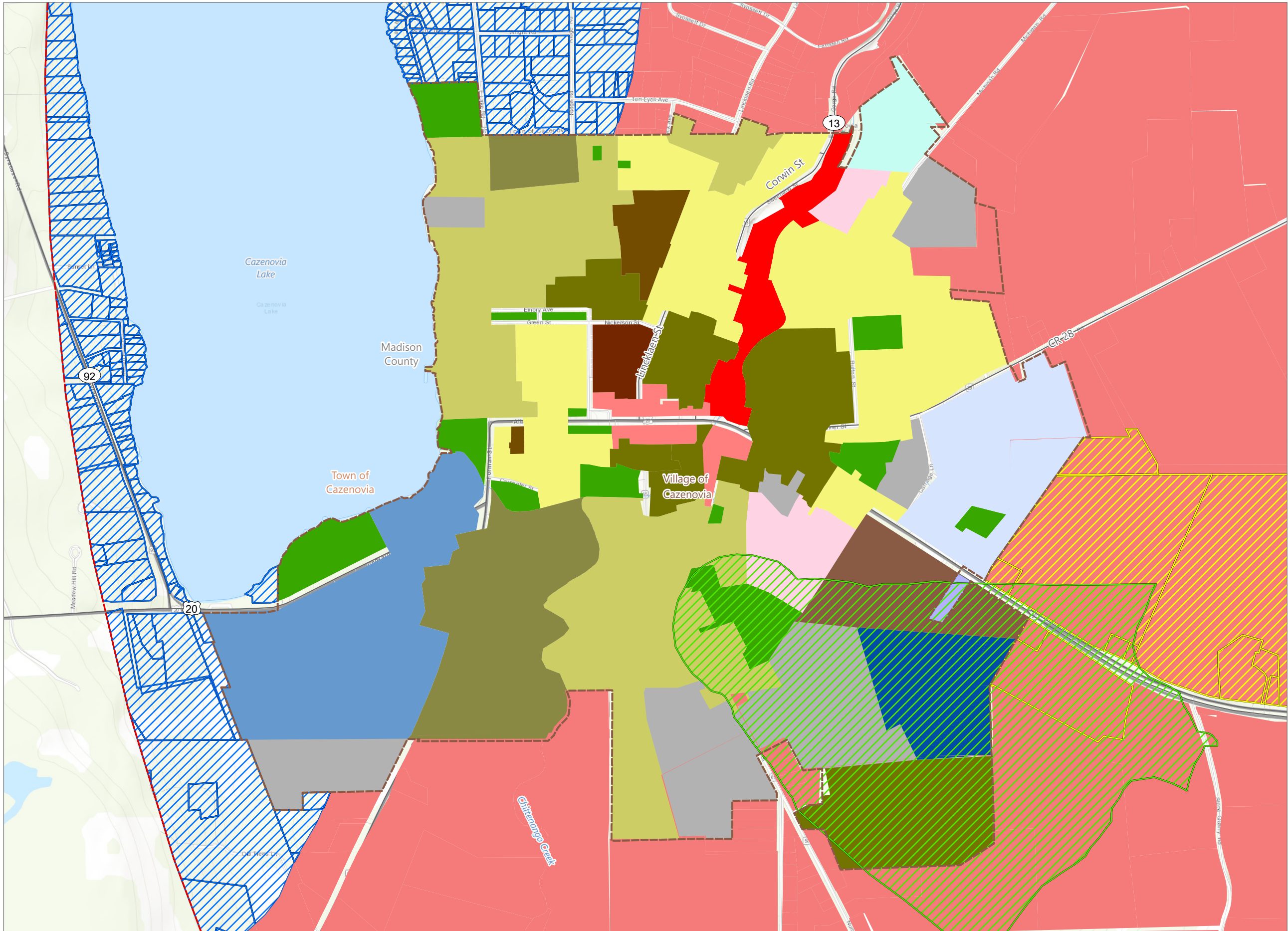
Prepared August 22, 2024  
Basemap: Esri "World Topographic Map" map service

Figure 3-6. Zoning Districts - Revision 2

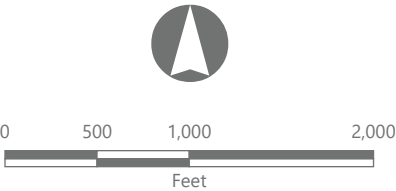
Hoffman Falls Wind

Towns of Eaton, Fenner, Nelson and  
Smithfield, Madison County,  
New York

**Section 94-c Second Supplement  
Matter No. 23-0038**



- Zoning District
- Agricultural Conservation (AC)
  - Business Use (B1)
  - Business Use (B2)
  - C-1 Commercial
  - C-2 Commercial
  - Commercial (CD)
  - LM
  - Planned Development
  - R-6
  - R-10
  - R-20
  - R-30
  - RA Rural A
  - RM
  - VE
  - VEN
  - VES-MU
  - VES-R
  - WG
  - Lake Watershed Overlay
  - Commercial Overlay
  - Wellhead Protection Overlay
- Facility Components
- 5-Mile Study Area



Prepared August 22, 2024  
Basemap: Esri "World Topographic Map" map service

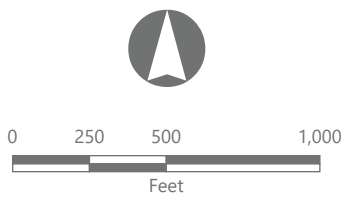
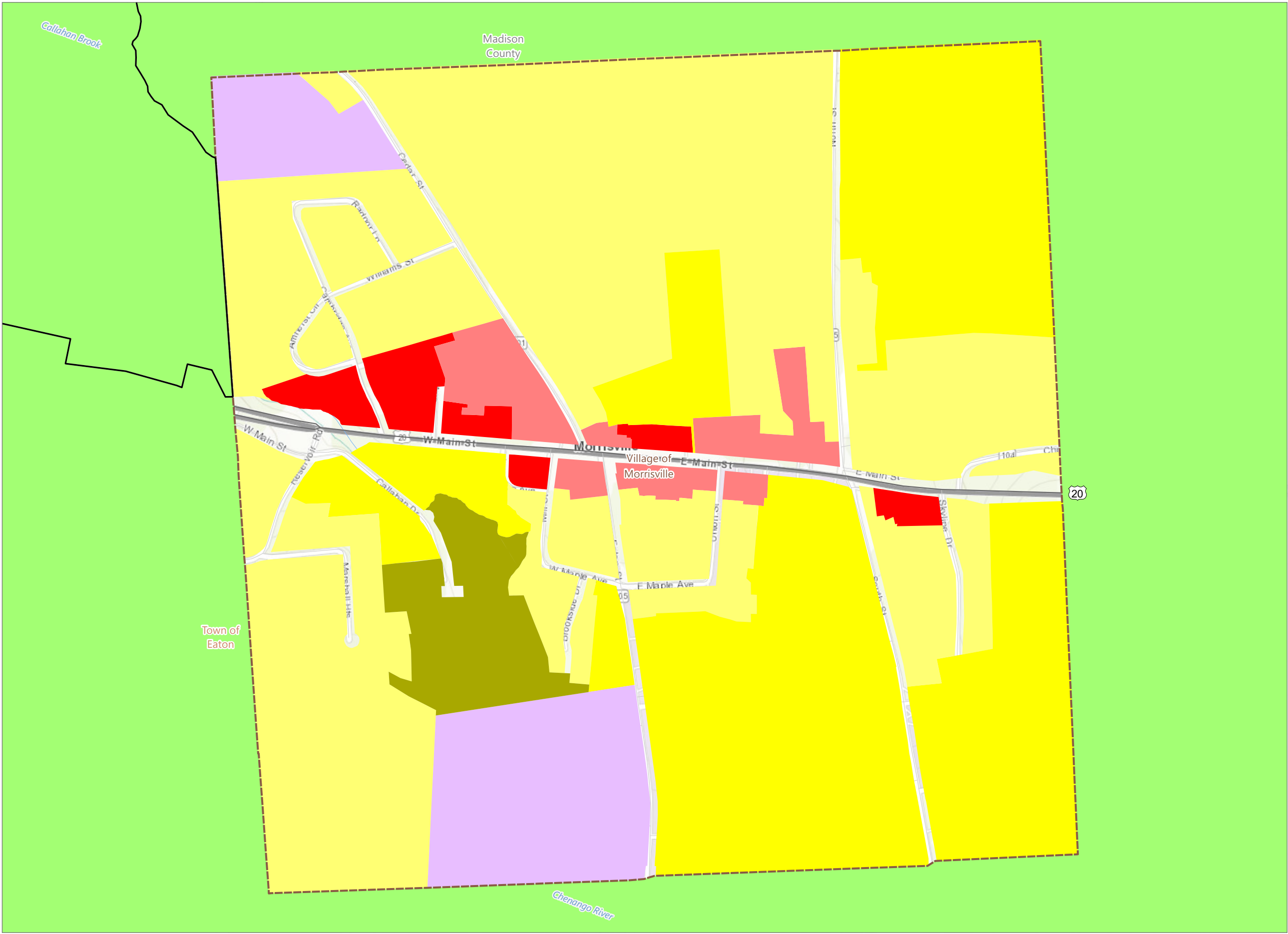
Figure 3-6. Zoning Districts - Revision 2

Hoffman Falls Wind

Towns of Eaton, Fenner, Nelson and  
Smithfield, Madison County,  
New York

**Section 94-c Second Supplement  
Matter No. 23-0038**

- Zoning District
- Agriculture, Residential, Commercial (ARC)
  - Business Use (B1)
  - Business Use (B2)
  - Industrial
  - R-1 Residential
  - R2- Residential
  - R3
- Facility Components
- Facility Site
  - 5-Mile Study Area



Prepared August 22, 2024  
Basemap: Esri "World Topographic Map" map service