

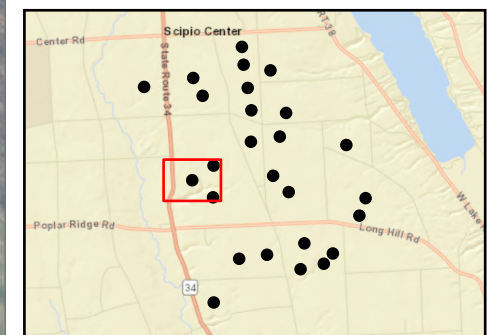
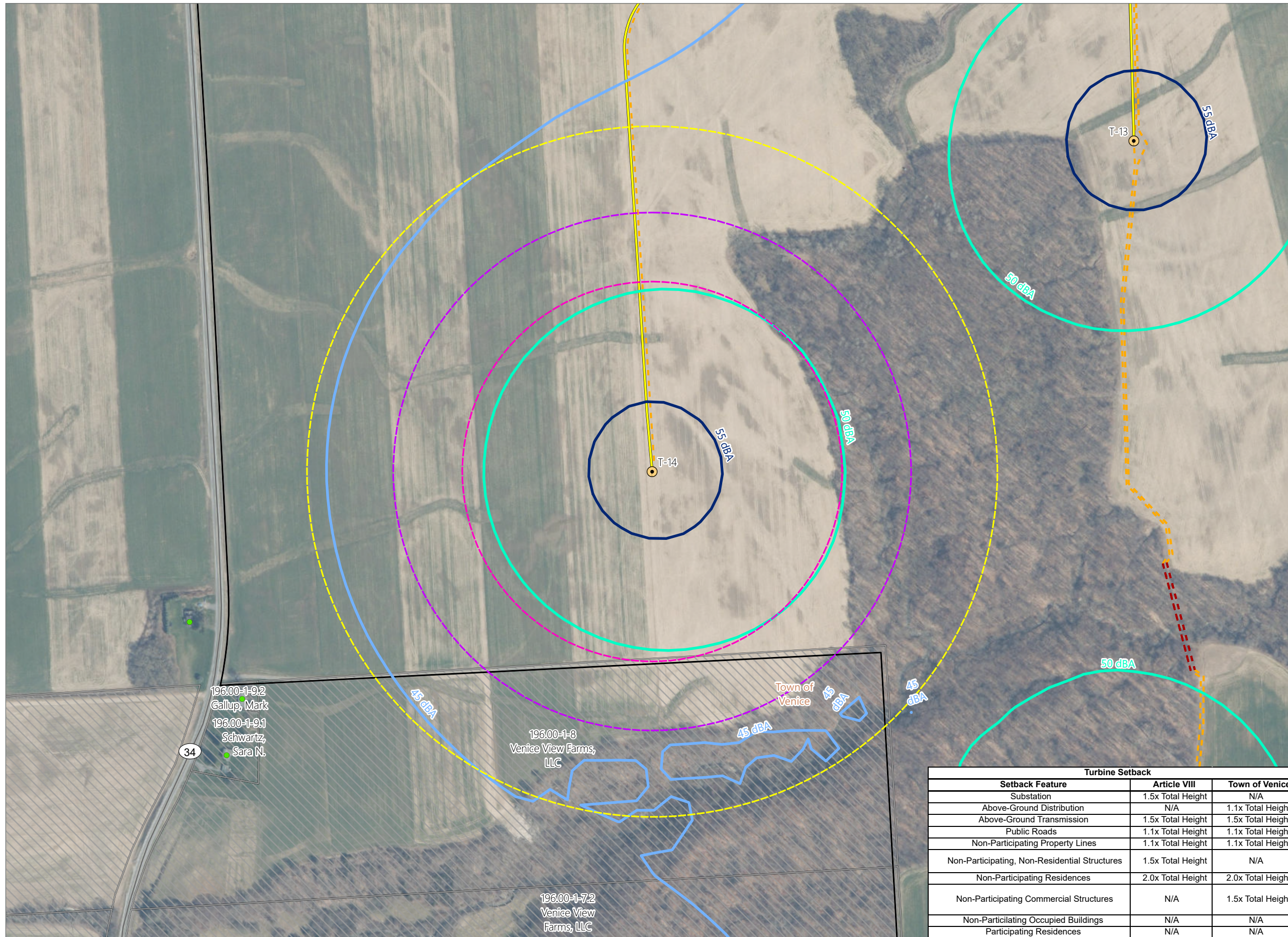
Figure 24-1. Setbacks - Revision 1

Agricola Wind Project

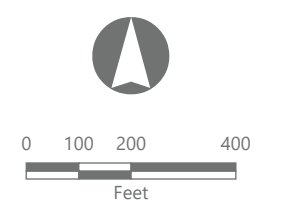
Towns of Venice and Scipio,
Cayuga County, New York

**Article VIII Supplement
Matter No. 23-03002**

- Receptor
- Residential Structure
- Sound Contour
- 45 dBA
 - 50 dBA
 - 55 dBA
- Setback
- 1.1x Tip Height
 - 1.5x Tip Height
 - 2.0x Tip Height
 - Participating Parcel - REDACTED
 - Potentially Participating Parcel - REDACTED
 - Non-participating Parcel
- Facility Component
- Wind Turbine
 - Access Road
 - Overhead Collection Line
 - Underground Collection Line
 - Facility Site



Sheet 14 of 26



Prepared February 3, 2025
Basemap: NYS DOP "2023" orthoimagery map service

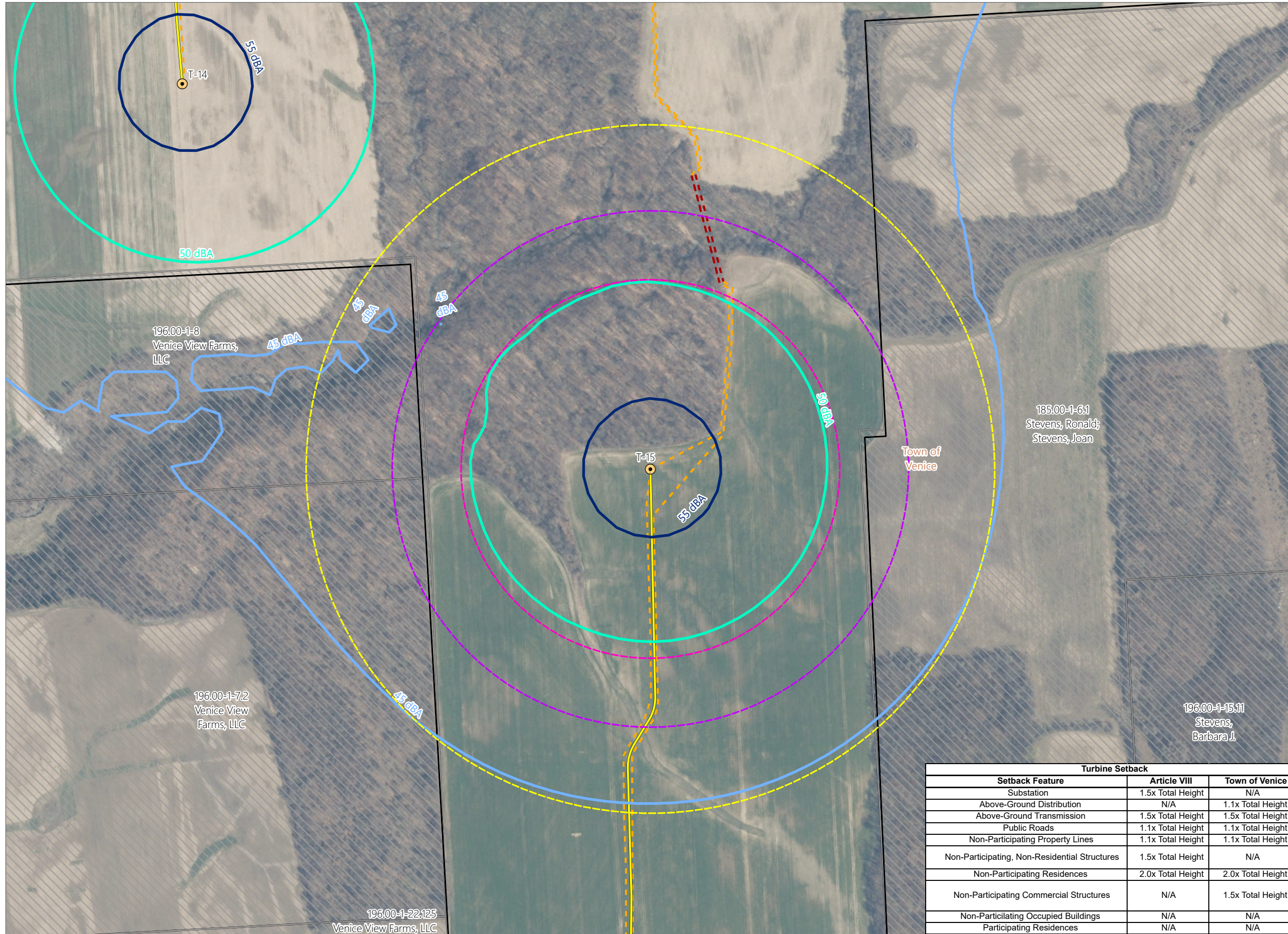
Turbine Setback		
Setback Feature	Article VIII	Town of Venice
Substation	1.5x Total Height	N/A
Above-Ground Distribution	N/A	1.1x Total Height
Above-Ground Transmission	1.5x Total Height	1.5x Total Height
Public Roads	1.1x Total Height	1.1x Total Height
Non-Participating Property Lines	1.1x Total Height	1.1x Total Height
Non-Participating, Non-Residential Structures	1.5x Total Height	N/A
Non-Participating Residences	2.0x Total Height	2.0x Total Height
Non-Participating Commercial Structures	N/A	1.5x Total Height
Non-Participating Occupied Buildings	N/A	N/A
Participating Residences	N/A	N/A

Figure 24-1. Setbacks - Revision 1

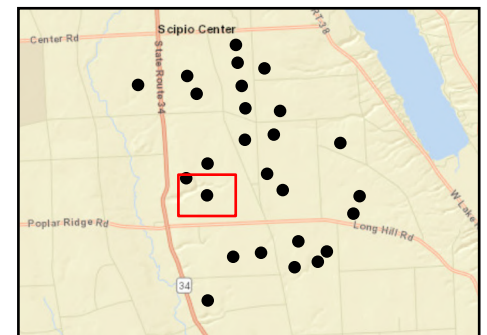
Agricola Wind Project

Towns of Venice and Scipio,
Cayuga County, New York

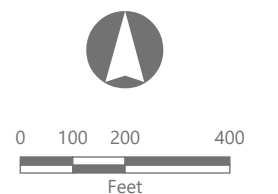
**Article VIII Supplement
Matter No. 23-03002**



- Sound Contour
 - 45 dBA
 - 50 dBA
 - 55 dBA
- Setback
 - 1.1x Tip Height
 - 1.5x Tip Height
 - 2.0x Tip Height
 - Participating Parcel - REDACTED
 - Potentially Participating Parcel - REDACTED
 - Non-participating Parcel
- Facility Component
 - Wind Turbine
 - Access Road
 - Overhead Collection Line
 - Underground Collection Line
 - Facility Site



Sheet 15 of 26



Prepared February 3, 2025
Basemap: NYS DOP '2023' orthoimagery map service

Turbine Setback		
Setback Feature	Article VIII	Town of Venice
Substation	1.5x Total Height	N/A
Above-Ground Distribution	N/A	1.1x Total Height
Above-Ground Transmission	1.5x Total Height	1.5x Total Height
Public Roads	1.1x Total Height	1.1x Total Height
Non-Participating Property Lines	1.1x Total Height	1.1x Total Height
Non-Participating, Non-Residential Structures	1.5x Total Height	N/A
Non-Participating Residences	2.0x Total Height	2.0x Total Height
Non-Participating Commercial Structures	N/A	1.5x Total Height
Non-Participating Occupied Buildings	N/A	N/A
Participating Residences	N/A	N/A

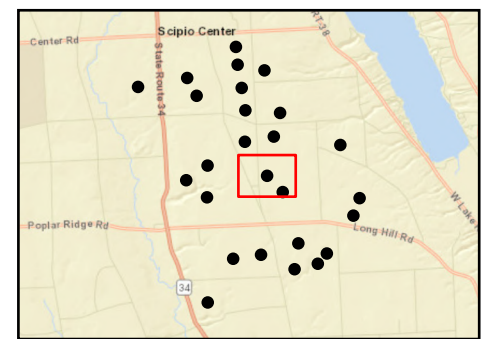
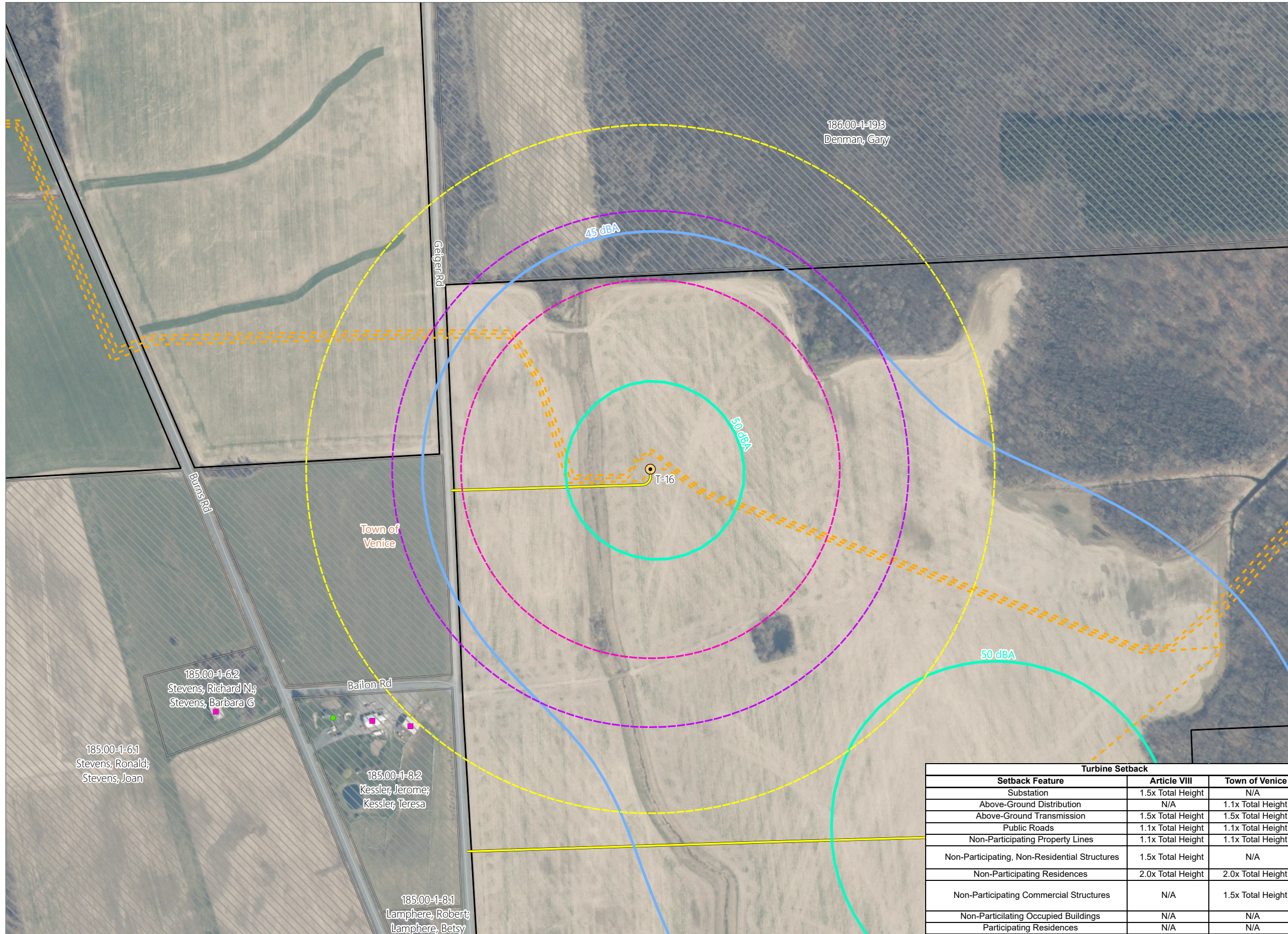
Figure 24-1. Setbacks - Revision 1

Agricola Wind Project

Towns of Venice and Scipio,
Cayuga County, New York

**Article VIII Supplement
Matter No. 23-03002**

- Receptor
- Residential Structure
 - Other Structure
- Sound Contour
- 45 dBA
 - 50 dBA
 - 55 dBA
- Setback
- ▭ 1.1x Tip Height
 - ▭ 1.5x Tip Height
 - ▭ 2.0x Tip Height
 - ▨ Participating Parcel - REDACTED
 - ▨ Non-participating Parcel
- Facility Component
- Wind Turbine
 - Access Road
 - - - Underground Collection Line
 - Facility Site



Sheet 16 of 26



Prepared February 3, 2025
Basemap: NYSODP "2023" orthoimagery map service

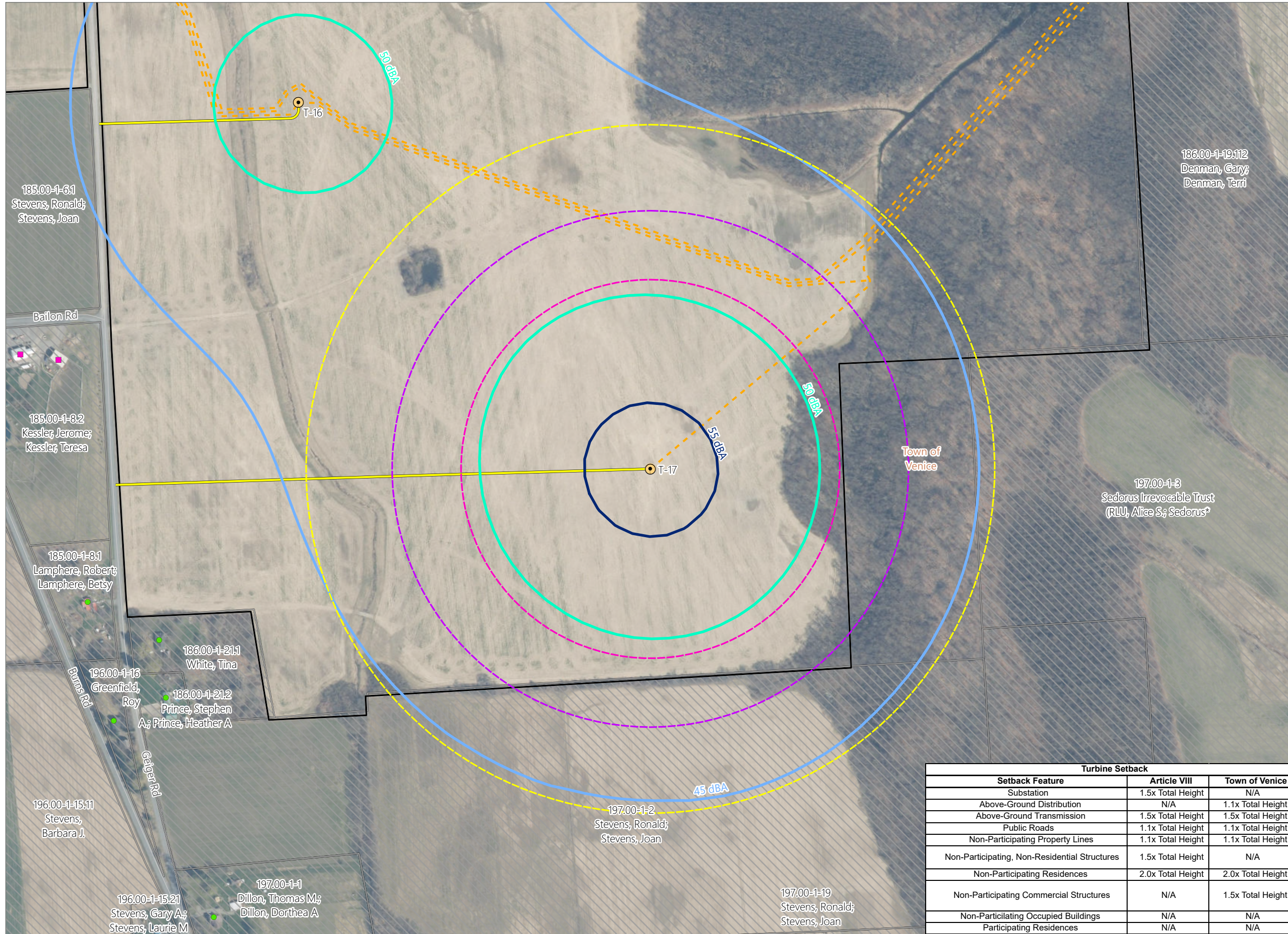
Turbine Setback		
Setback Feature	Article VIII	Town of Venice
Substation	1.5x Total Height	N/A
Above-Ground Distribution	N/A	1.1x Total Height
Above-Ground Transmission	1.5x Total Height	1.5x Total Height
Public Roads	1.1x Total Height	1.1x Total Height
Non-Participating Property Lines	1.1x Total Height	1.1x Total Height
Non-Participating, Non-Residential Structures	1.5x Total Height	N/A
Non-Participating Residences	2.0x Total Height	2.0x Total Height
Non-Participating Commercial Structures	N/A	1.5x Total Height
Non-Participating Occupied Buildings	N/A	N/A
Participating Residences	N/A	N/A

Figure 24-1. Setbacks - Revision 1

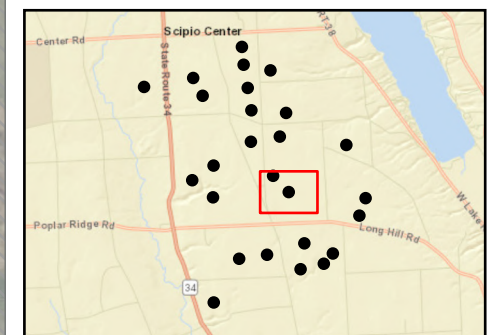
Agricola Wind Project

Towns of Venice and Scipio,
Cayuga County, New York

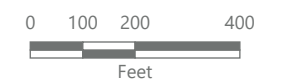
**Article VIII Supplement
Matter No. 23-03002**



- Receptor**
- Residential Structure
 - Other Structure
- Sound Contour**
- 45 dBA
 - 50 dBA
 - 55 dBA
- Setback**
- - - 1.1x Tip Height
 - - - 1.5x Tip Height
 - - - 2.0x Tip Height
 - ▨ Participating Parcel - REDACTED
 - ▨ Non-participating Parcel
- Facility Component**
- Wind Turbine
 - Access Road
 - - - Underground Collection Line
 - Facility Site



Sheet 17 of 26



Prepared February 3, 2025
Basemap: NYS DOP "2023" orthoimagery map service

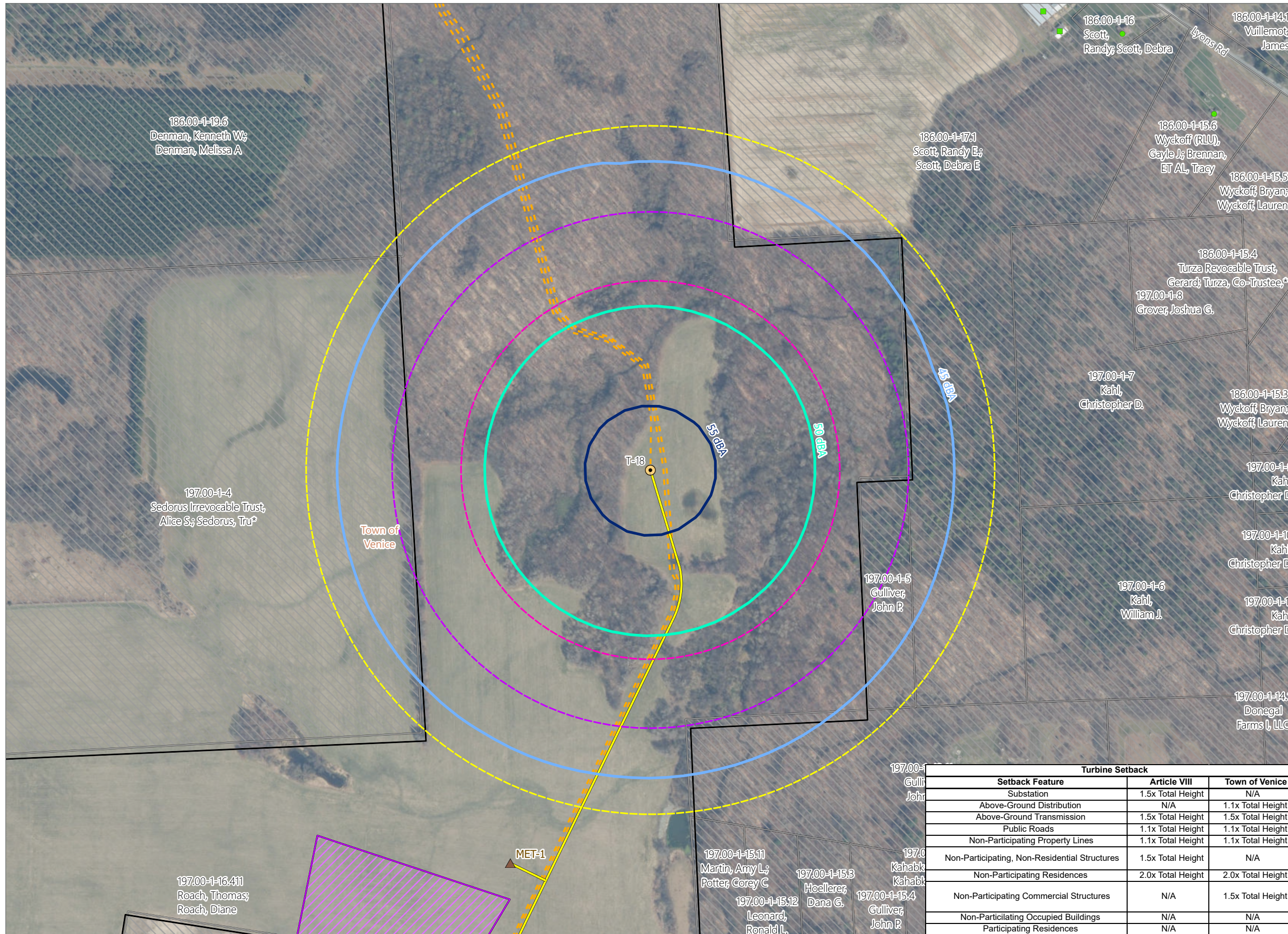
Turbine Setback		
Setback Feature	Article VIII	Town of Venice
Substation	1.5x Total Height	N/A
Above-Ground Distribution	N/A	1.1x Total Height
Above-Ground Transmission	1.5x Total Height	1.5x Total Height
Public Roads	1.1x Total Height	1.1x Total Height
Non-Participating Property Lines	1.1x Total Height	1.1x Total Height
Non-Participating, Non-Residential Structures	1.5x Total Height	N/A
Non-Participating Residences	2.0x Total Height	2.0x Total Height
Non-Participating Commercial Structures	N/A	1.5x Total Height
Non-Participating Occupied Buildings	N/A	N/A
Participating Residences	N/A	N/A

Figure 24-1. Setbacks - Revision 1

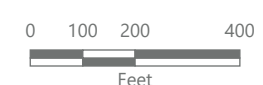
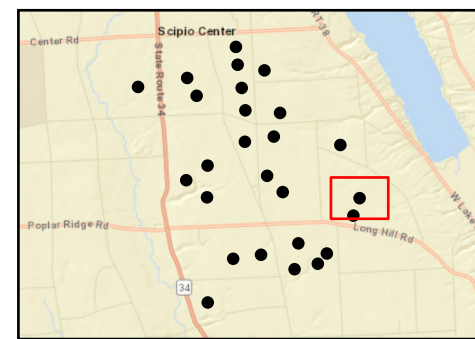
Agricola Wind Project

Towns of Venice and Scipio, Cayuga County, New York

**Article VIII Supplement
Matter No. 23-03002**



- Receptor**
 - Residential Structure
 - Commercial Structure
- Sound Contour**
 - 45 dBA
 - 50 dBA
 - 55 dBA
- Setback**
 - ▭ 1.1x Tip Height
 - ▭ 1.5x Tip Height
 - ▭ 2.0x Tip Height
 - ▨ Participating Parcel - REDACTED
 - ▨ Non-participating Parcel
- Facility Component**
 - Wind Turbine
 - ▲ MET Tower
 - Access Road
 - - - Underground Collection Line
 - ▨ Laydown Yard
 - ▭ Facility Site



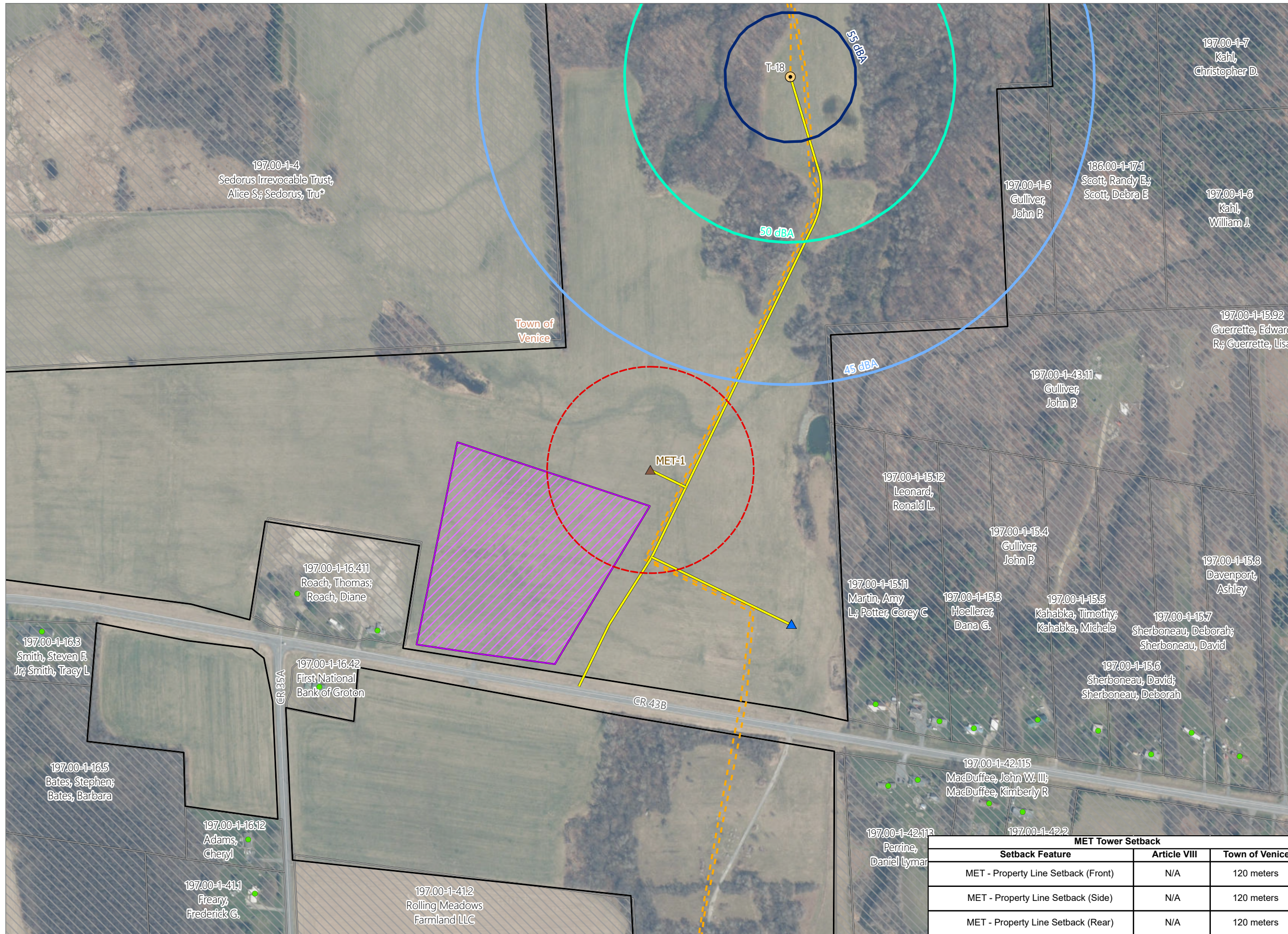
Turbine Setback		
Setback Feature	Article VIII	Town of Venice
Substation	1.5x Total Height	N/A
Above-Ground Distribution	N/A	1.1x Total Height
Above-Ground Transmission	1.5x Total Height	1.5x Total Height
Public Roads	1.1x Total Height	1.1x Total Height
Non-Participating Property Lines	1.1x Total Height	1.1x Total Height
Non-Participating, Non-Residential Structures	1.5x Total Height	N/A
Non-Participating Residences	2.0x Total Height	2.0x Total Height
Non-Participating Commercial Structures	N/A	1.5x Total Height
Non-Participating Occupied Buildings	N/A	N/A
Participating Residences	N/A	N/A

Figure 24-1. Setbacks - Revision 1

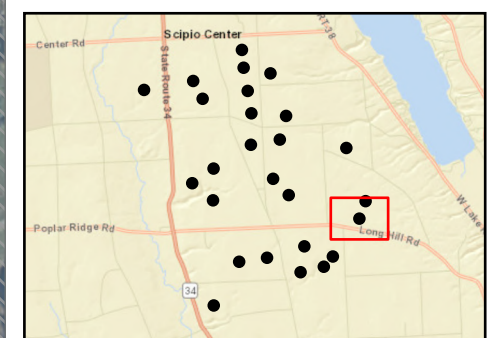
Agricola Wind Project

Towns of Venice and Scipio,
Cayuga County, New York

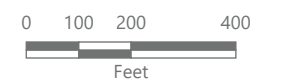
**Article VIII Supplement
Matter No. 23-03002**



- Receptor
- Residential Structure
 - Commercial Structure
- Sound Contour
- 45 dBA
 - 50 dBA
 - 55 dBA
- Setback
- ⬡ MET Tower 120-Meter Property Line Setback
 - ▨ Participating Parcel - REDACTED
 - ▤ Non-participating Parcel
- Facility Component
- Wind Turbine
 - ▲ ADLS Tower
 - ▲ MET Tower
 - Access Road
 - - - Underground Collection Line
 - ▨ Laydown Yard
 - ▭ Facility Site



Sheet 19 of 26



Prepared February 3, 2025
Basemap: NYS DOP "2023" orthoimagery map service

MET Tower Setback		
Setback Feature	Article VIII	Town of Venice
MET - Property Line Setback (Front)	N/A	120 meters
MET - Property Line Setback (Side)	N/A	120 meters
MET - Property Line Setback (Rear)	N/A	120 meters

Figure 24-1. Setbacks - Revision 1

Agricola Wind Project

Towns of Venice and Scipio,
Cayuga County, New York

**Article VIII Supplement
Matter No. 23-03002**

Receptor

- Residential Structure
- Commercial Structure

Sound Contour

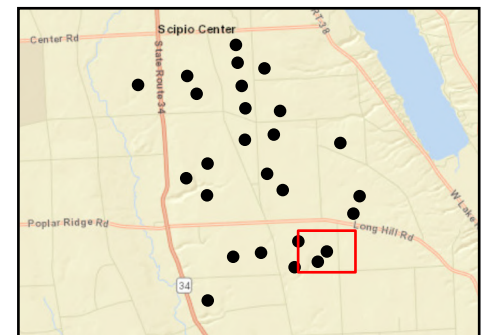
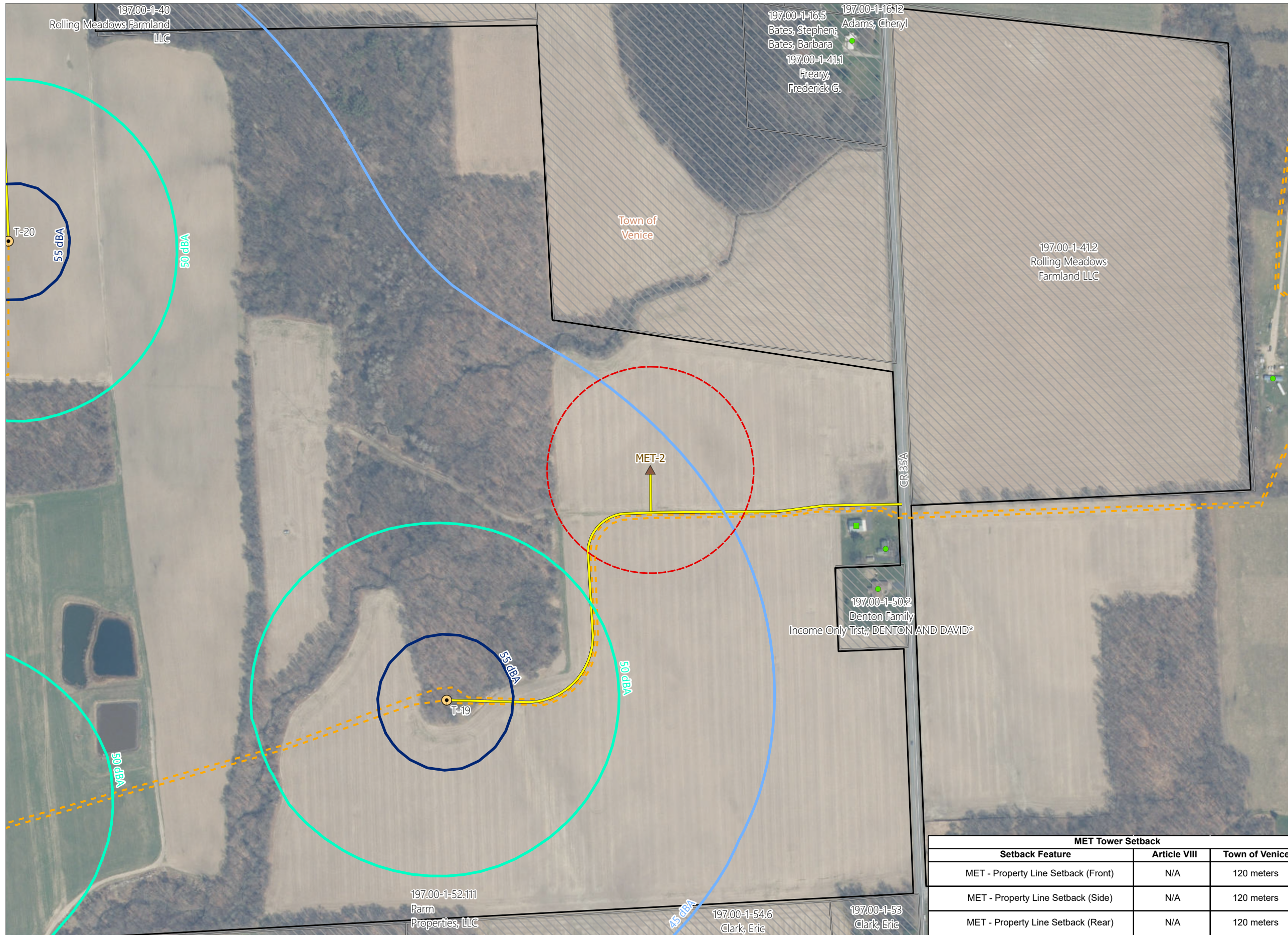
- 45 dBA
- 50 dBA
- 55 dBA

Setback

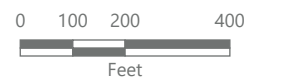
- MET Tower 120-Meter Property Line Setback
- Participating Parcel - REDACTED
- Non-participating Parcel

Facility Component

- Wind Turbine
- ▲ MET Tower
- Access Road
- Underground Collection Line
- Facility Site



Sheet 20 of 26



Prepared February 3, 2025
Basemap: NYS DOP "2023" orthoimagery map service

MET Tower Setback		
Setback Feature	Article VIII	Town of Venice
MET - Property Line Setback (Front)	N/A	120 meters
MET - Property Line Setback (Side)	N/A	120 meters
MET - Property Line Setback (Rear)	N/A	120 meters

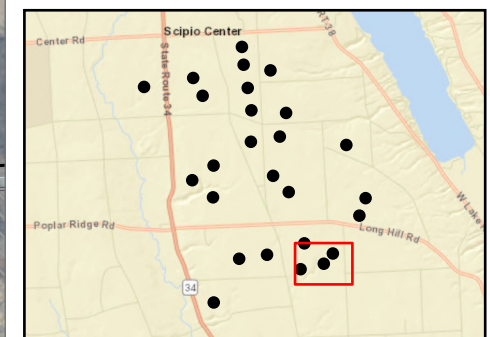
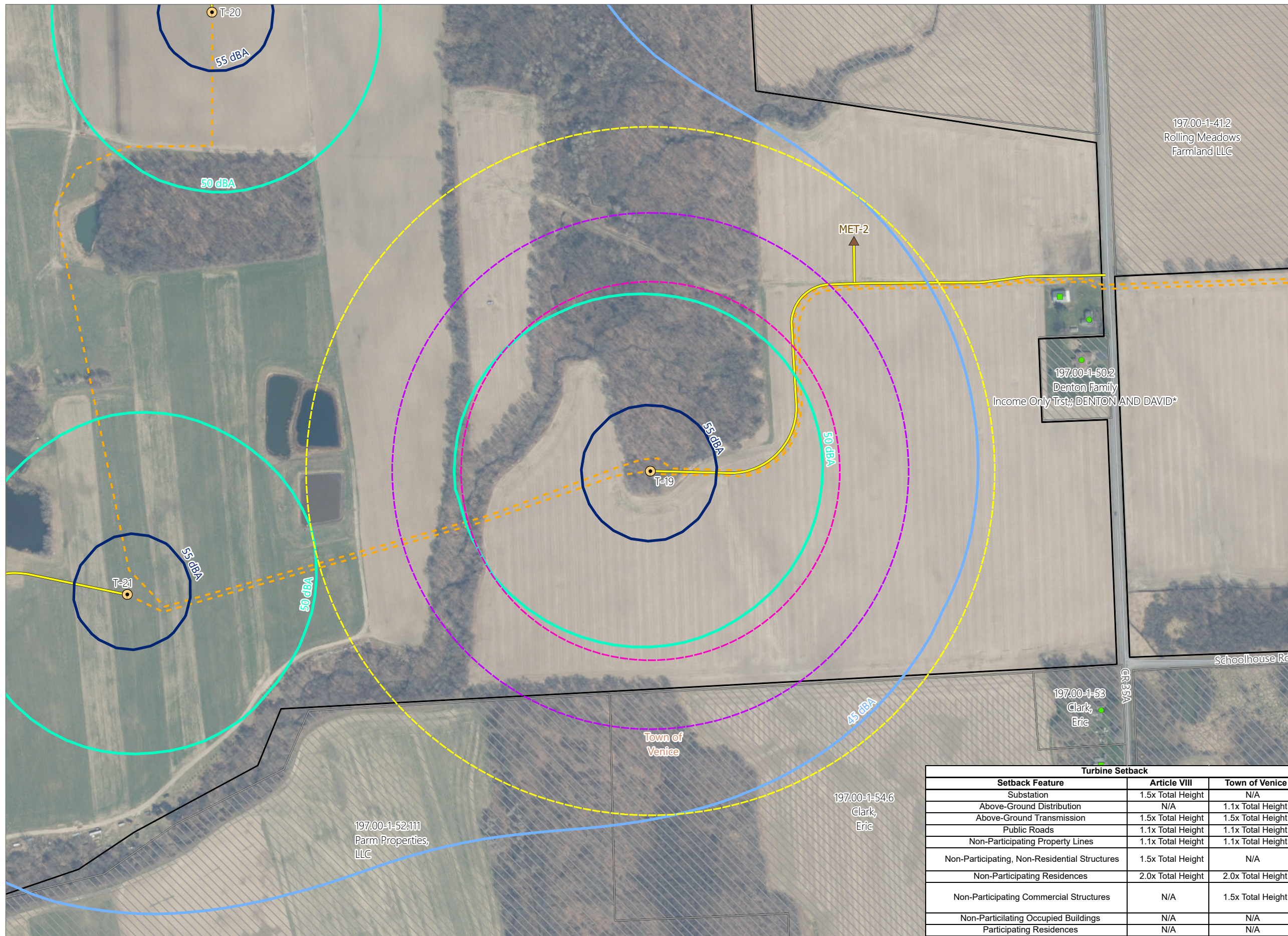
Figure 24-1. Setbacks - Revision 1

Agricola Wind Project

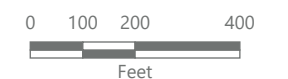
Towns of Venice and Scipio,
Cayuga County, New York

**Article VIII Supplement
Matter No. 23-03002**

- Receptor
 - Residential Structure
 - Commercial Structure
 - Other Structure
- Sound Contour
 - 45 dBA
 - 50 dBA
 - 55 dBA
- Setback
 - ▭ 1.1x Tip Height
 - ▭ 1.5x Tip Height
 - ▭ 2.0x Tip Height
 - ▭ Participating Parcel - REDACTED
 - ▭ Non-participating Parcel
- Facility Component
 - Wind Turbine
 - ▲ MET Tower
 - Access Road
 - - - Underground Collection Line
 - ▭ Facility Site



Sheet 21 of 26



Prepared February 3, 2025
Basemap: NYSODP '2023' orthoimagery map service

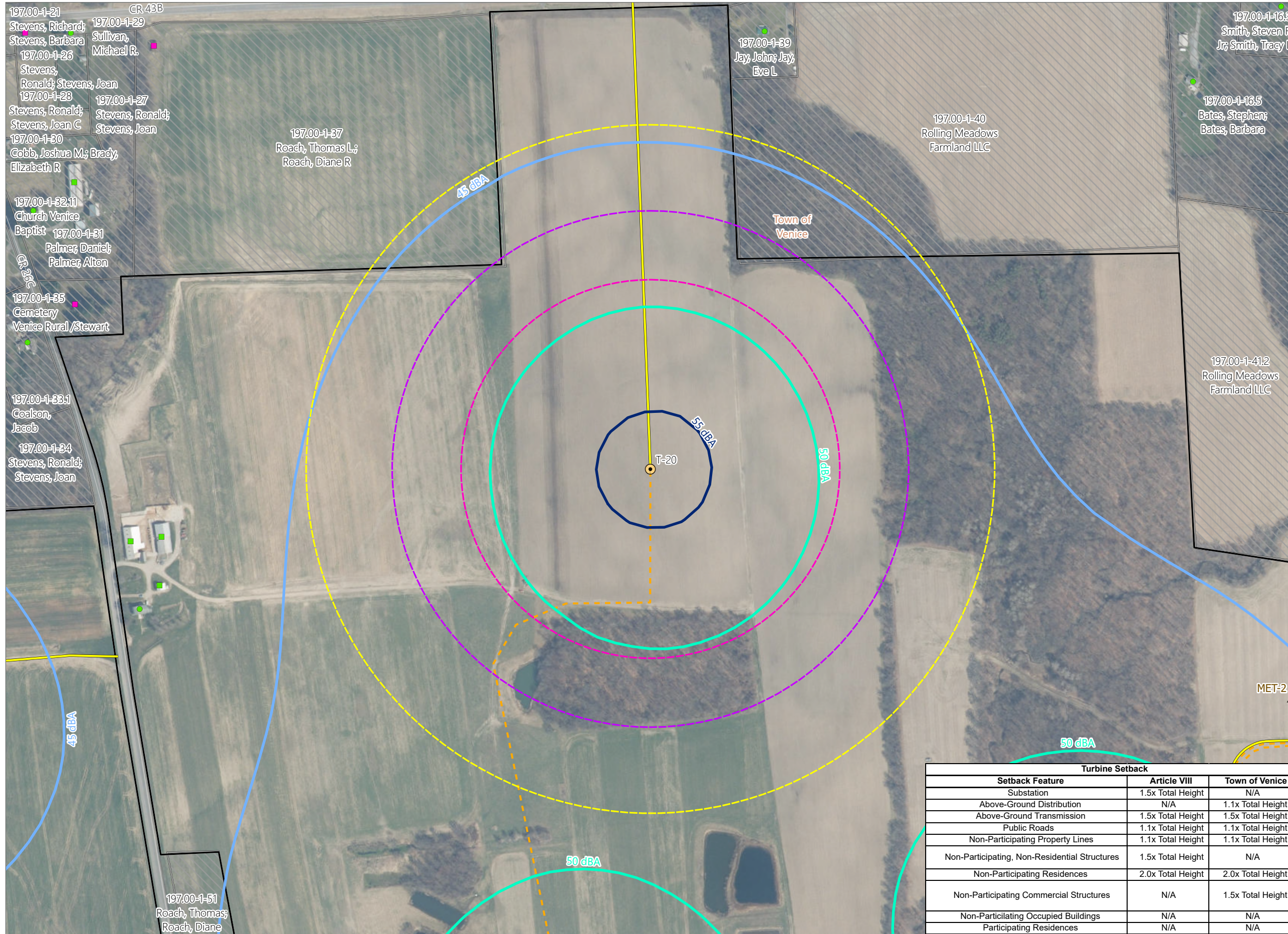
Turbine Setback		
Setback Feature	Article VIII	Town of Venice
Substation	1.5x Total Height	N/A
Above-Ground Distribution	N/A	1.1x Total Height
Above-Ground Transmission	1.5x Total Height	1.5x Total Height
Public Roads	1.1x Total Height	1.1x Total Height
Non-Participating Property Lines	1.1x Total Height	1.1x Total Height
Non-Participating, Non-Residential Structures	1.5x Total Height	N/A
Non-Participating Residences	2.0x Total Height	2.0x Total Height
Non-Participating Commercial Structures	N/A	1.5x Total Height
Non-Participating Occupied Buildings	N/A	N/A
Participating Residences	N/A	N/A

Figure 24-1. Setbacks - Revision 1

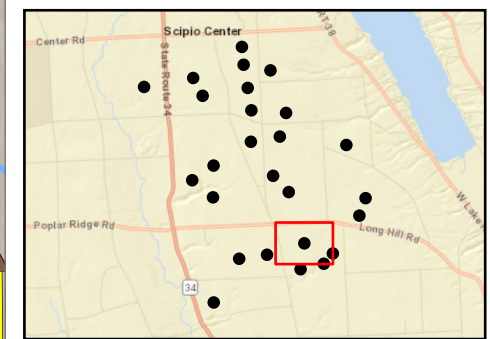
Agricola Wind Project

Towns of Venice and Scipio,
Cayuga County, New York

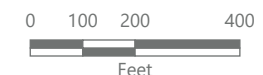
**Article VIII Supplement
Matter No. 23-03002**



- Receptor**
- Residential Structure
 - Commercial Structure
 - Other Structure
- Sound Contour**
- 45 dBA
 - 50 dBA
 - 55 dBA
- Setback**
- 1.1x Tip Height
 - 1.5x Tip Height
 - 2.0x Tip Height
 - ▨ Participating Parcel - REDACTED
 - ▨ Non-participating Parcel
- Facility Component**
- Wind Turbine
 - ▲ MET Tower
 - Access Road
 - - - Underground Collection Line
 - ▭ Facility Site



Sheet 22 of 26



Prepared February 3, 2025
Basemap: NYSODP "2023" orthoimagery map service

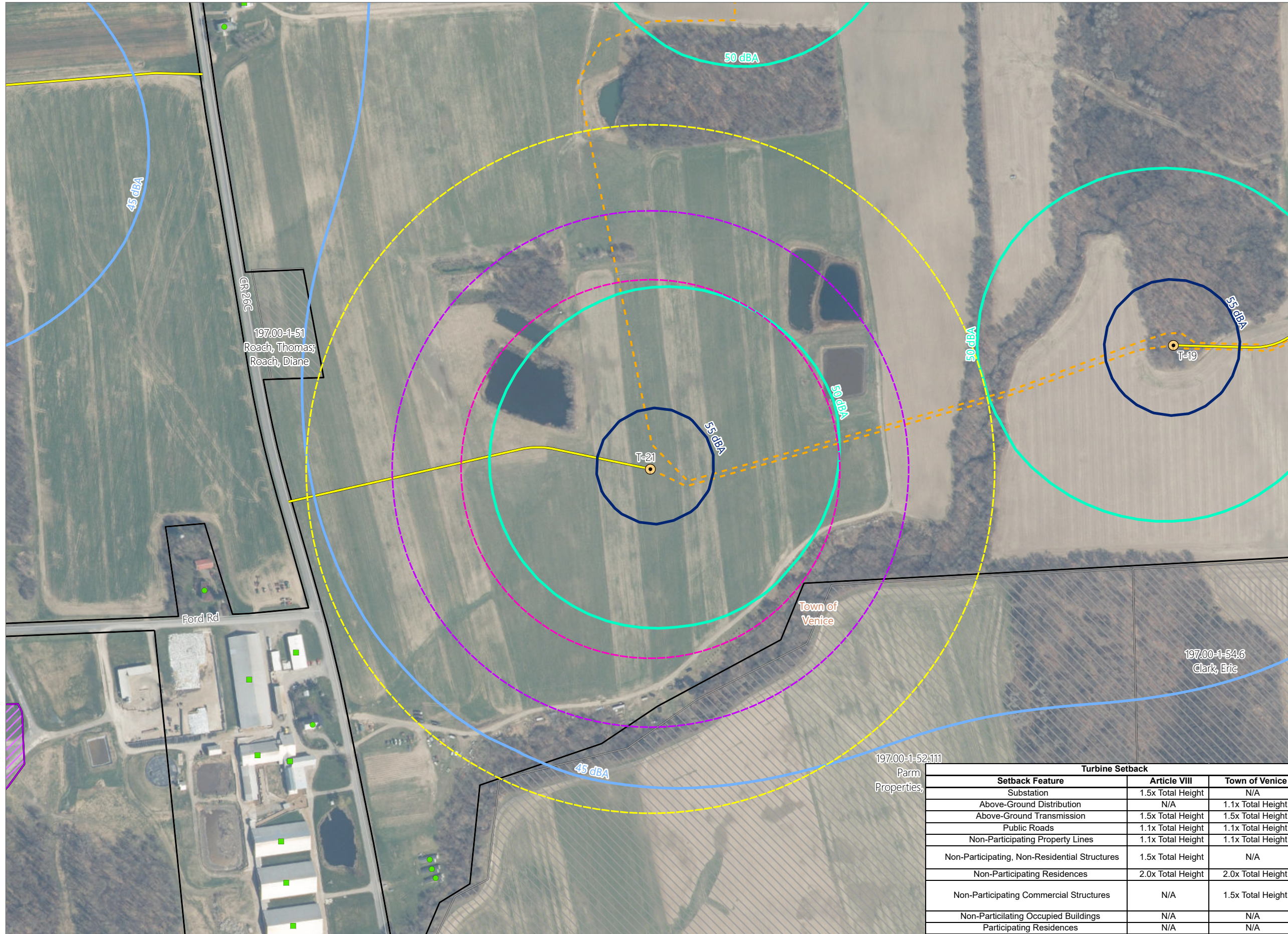
Turbine Setback		
Setback Feature	Article VIII	Town of Venice
Substation	1.5x Total Height	N/A
Above-Ground Distribution	N/A	1.1x Total Height
Above-Ground Transmission	1.5x Total Height	1.5x Total Height
Public Roads	1.1x Total Height	1.1x Total Height
Non-Participating Property Lines	1.1x Total Height	1.1x Total Height
Non-Participating, Non-Residential Structures	1.5x Total Height	N/A
Non-Participating Residences	2.0x Total Height	2.0x Total Height
Non-Participating Commercial Structures	N/A	1.5x Total Height
Non-Participating Occupied Buildings	N/A	N/A
Participating Residences	N/A	N/A

Figure 24-1. Setbacks - Revision 1

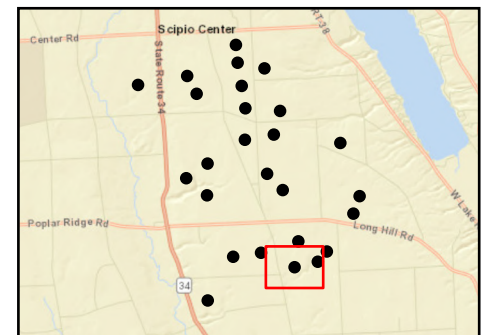
Agricola Wind Project

Towns of Venice and Scipio,
Cayuga County, New York

**Article VIII Supplement
Matter No. 23-03002**



- Receptor
- Residential Structure
 - Commercial Structure
- Sound Contour
- 45 dBA
 - 50 dBA
 - 55 dBA
- Setback
- 1.1x Tip Height
 - 1.5x Tip Height
 - 2.0x Tip Height
 - ▨ Participating Parcel - REDACTED
 - ▨ Potentially Participating Parcel - REDACTED
 - ▨ Non-participating Parcel
- Facility Component
- Wind Turbine
 - Access Road
 - - - Underground Collection Line
 - ▨ Laydown Yard
 - ▭ Facility Site



Sheet 23 of 26



Prepared February 3, 2025
Basemap: NYS DOP "2023" orthoimagery map service

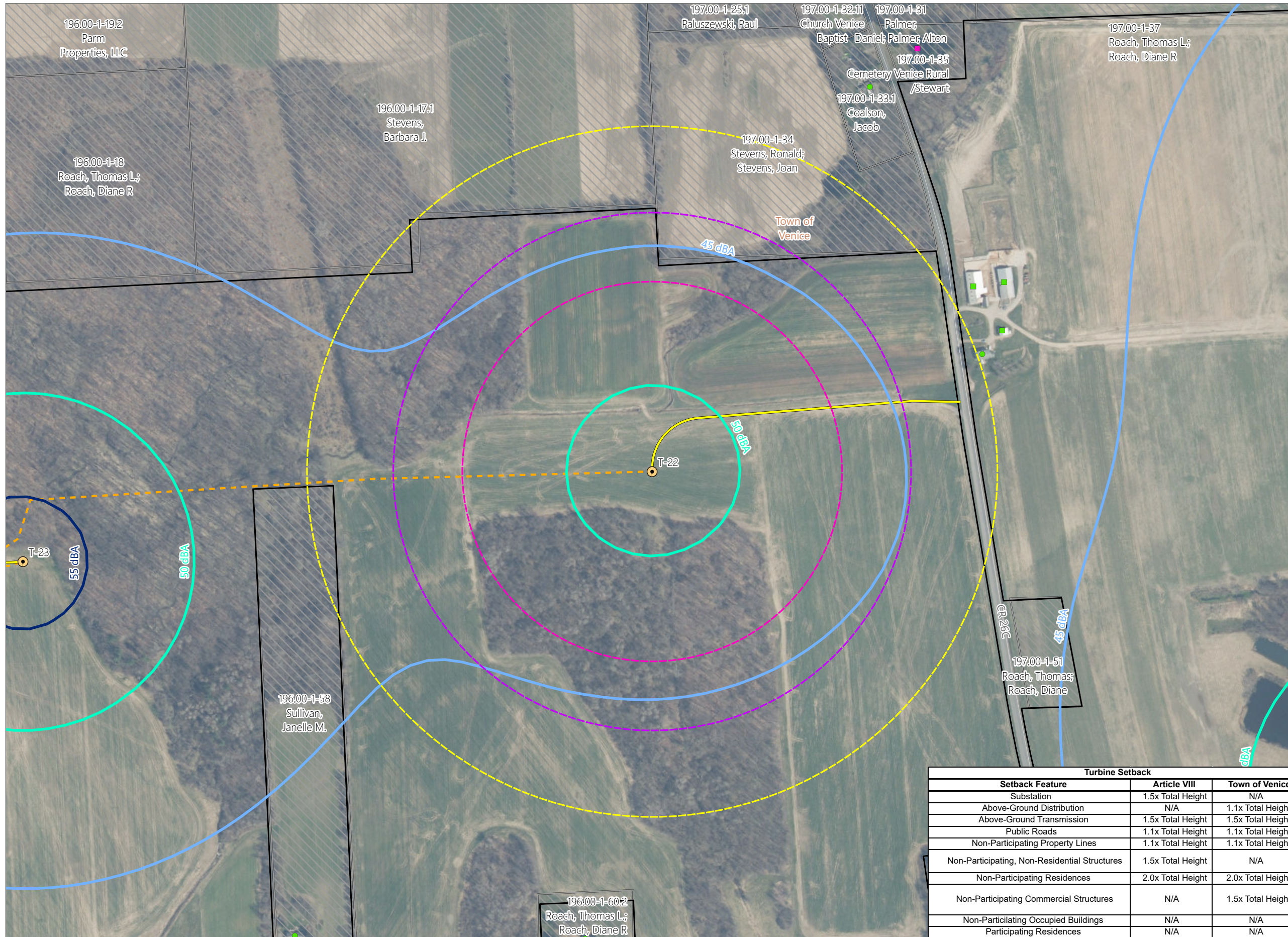
Turbine Setback		
Setback Feature	Article VIII	Town of Venice
Substation	1.5x Total Height	N/A
Above-Ground Distribution	N/A	1.1x Total Height
Above-Ground Transmission	1.5x Total Height	1.5x Total Height
Public Roads	1.1x Total Height	1.1x Total Height
Non-Participating Property Lines	1.1x Total Height	1.1x Total Height
Non-Participating, Non-Residential Structures	1.5x Total Height	N/A
Non-Participating Residences	2.0x Total Height	2.0x Total Height
Non-Participating Commercial Structures	N/A	1.5x Total Height
Non-Participating Occupied Buildings	N/A	N/A
Participating Residences	N/A	N/A

Figure 24-1. Setbacks - Revision 1

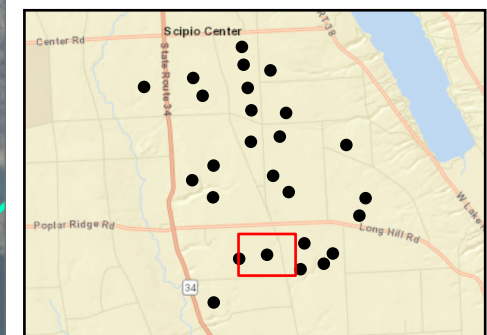
Agricola Wind Project

Towns of Venice and Scipio,
Cayuga County, New York

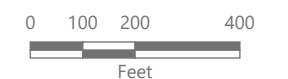
**Article VIII Supplement
Matter No. 23-03002**



- Receptor**
- Residential Structure
 - Commercial Structure
 - Other Structure
- Sound Contour**
- 45 dBA
 - 50 dBA
 - 55 dBA
- Setback**
- 1.1x Tip Height
 - 1.5x Tip Height
 - 2.0x Tip Height
 - ▨ Participating Parcel - REDACTED
 - ▨ Potentially Participating Parcel - REDACTED
 - ▨ Non-participating Parcel
- Facility Component**
- Wind Turbine
 - Access Road
 - - - Underground Collection Line
 - Facility Site



Sheet 24 of 26



Prepared February 3, 2025
Basemap: NYS DOP "2023" orthoimagery map service

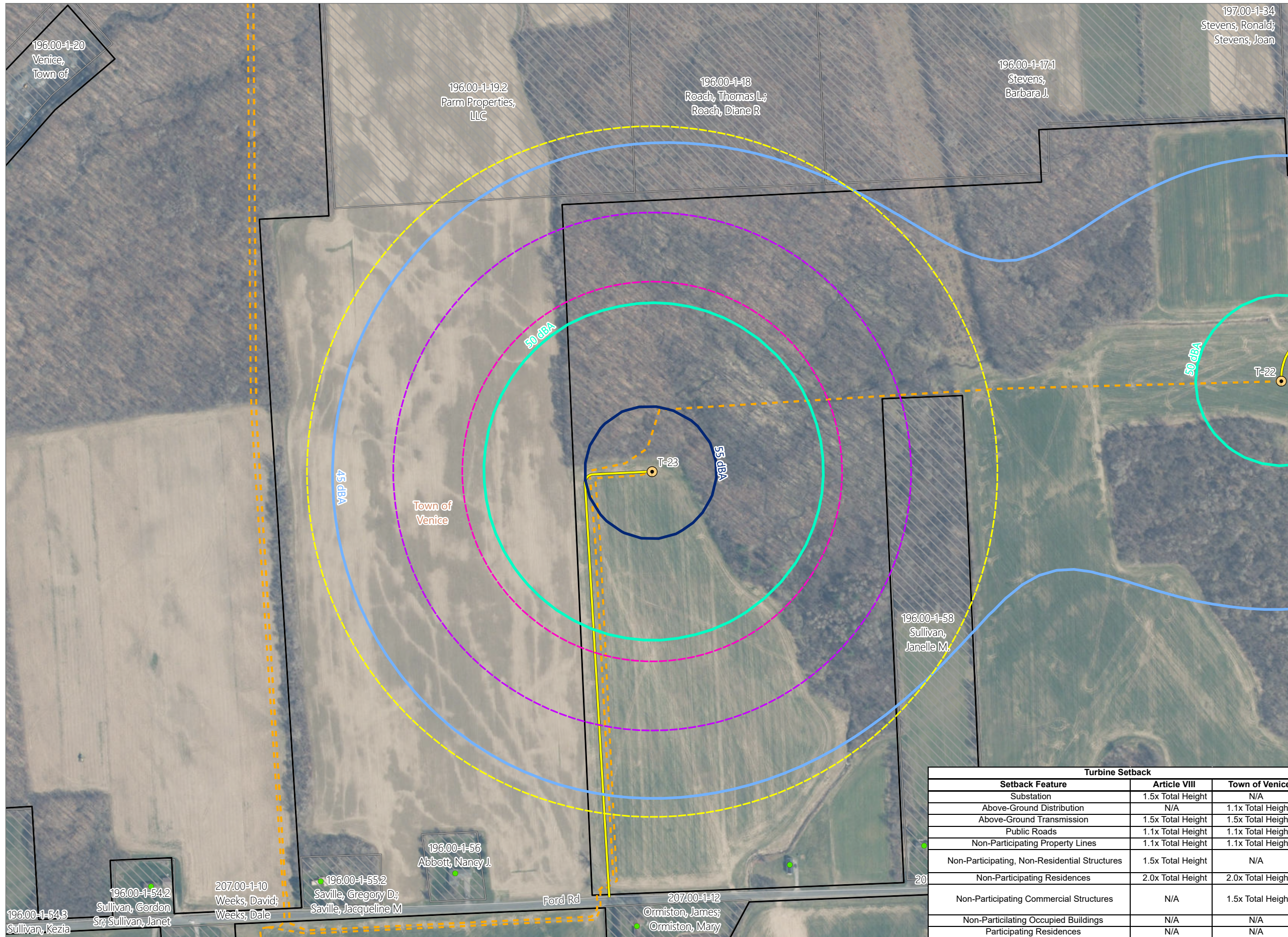
Turbine Setback		
Setback Feature	Article VIII	Town of Venice
Substation	1.5x Total Height	N/A
Above-Ground Distribution	N/A	1.1x Total Height
Above-Ground Transmission	1.5x Total Height	1.5x Total Height
Public Roads	1.1x Total Height	1.1x Total Height
Non-Participating Property Lines	1.1x Total Height	1.1x Total Height
Non-Participating, Non-Residential Structures	1.5x Total Height	N/A
Non-Participating Residences	2.0x Total Height	2.0x Total Height
Non-Participating Commercial Structures	N/A	1.5x Total Height
Non-Participating Occupied Buildings	N/A	N/A
Participating Residences	N/A	N/A

Figure 24-1. Setbacks - Revision 1

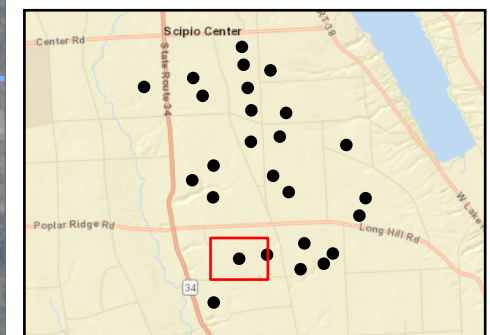
Agricola Wind Project

Towns of Venice and Scipio,
Cayuga County, New York

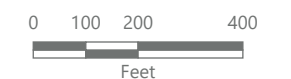
**Article VIII Supplement
Matter No. 23-03002**



- Receptor
 - Residential Structure
- Sound Contour
 - 45 dBA
 - 50 dBA
 - 55 dBA
- Setback
 - 1.1x Tip Height
 - 1.5x Tip Height
 - 2.0x Tip Height
 - ▨ Participating Parcel - REDACTED
 - ▨ Potentially Participating Parcel - REDACTED
 - ▨ Non-participating Parcel
- Facility Component
 - Wind Turbine
 - Access Road
 - - - Underground Collection Line
 - ▭ Facility Site



Sheet 25 of 26



Prepared February 3, 2025
Basemap: NYSODP "2023" orthoimagery map service

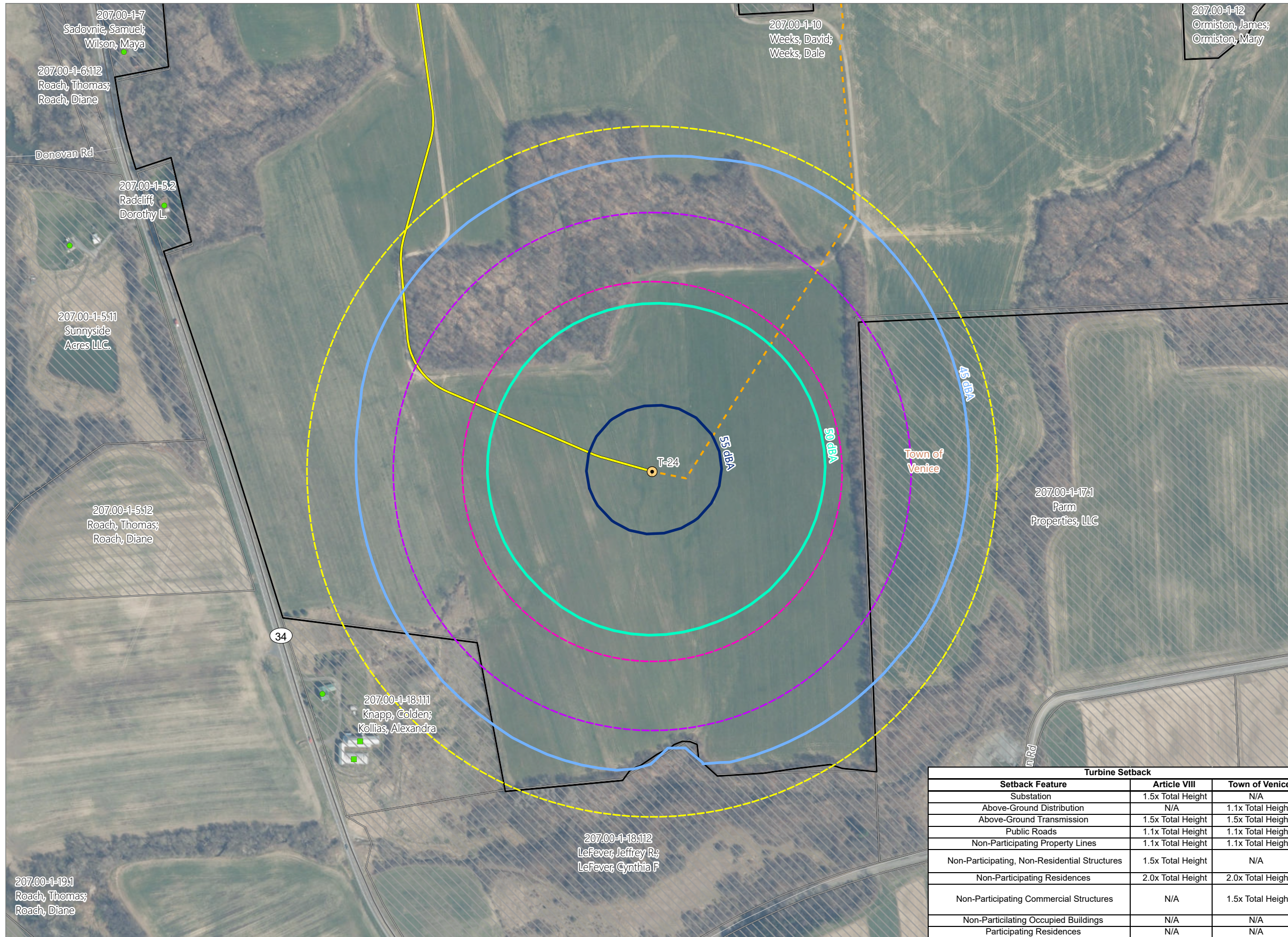
Turbine Setback		
Setback Feature	Article VIII	Town of Venice
Substation	1.5x Total Height	N/A
Above-Ground Distribution	N/A	1.1x Total Height
Above-Ground Transmission	1.5x Total Height	1.5x Total Height
Public Roads	1.1x Total Height	1.1x Total Height
Non-Participating Property Lines	1.1x Total Height	1.1x Total Height
Non-Participating, Non-Residential Structures	1.5x Total Height	N/A
Non-Participating Residences	2.0x Total Height	2.0x Total Height
Non-Participating Commercial Structures	N/A	1.5x Total Height
Non-Participating Occupied Buildings	N/A	N/A
Participating Residences	N/A	N/A

Figure 24-1. Setbacks - Revision 1

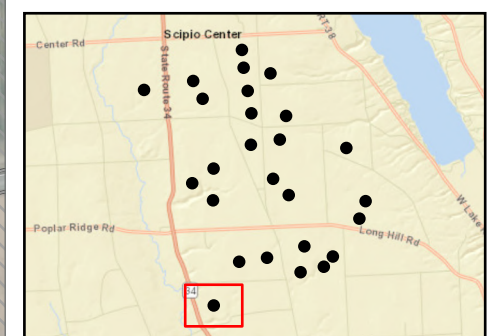
Agricola Wind Project

Towns of Venice and Scipio,
Cayuga County, New York

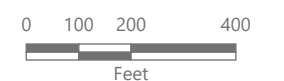
**Article VIII Supplement
Matter No. 23-03002**



- Receptor
 - Residential Structure
 - Commercial Structure
- Sound Contour
 - 45 dBA
 - 50 dBA
 - 55 dBA
- Setback
 - 1.1x Tip Height
 - 1.5x Tip Height
 - 2.0x Tip Height
 - ▨ Participating Parcel - REDACTED
 - ▨ Potentially Participating Parcel - REDACTED
 - ▨ Non-participating Parcel
- Facility Component
 - Wind Turbine
 - Access Road
 - - - Underground Collection Line
 - Facility Site



Sheet 26 of 26



Prepared February 3, 2025
Basemap: NYS DOP "2023" orthoimagery map service

Turbine Setback		
Setback Feature	Article VIII	Town of Venice
Substation	1.5x Total Height	N/A
Above-Ground Distribution	N/A	1.1x Total Height
Above-Ground Transmission	1.5x Total Height	1.5x Total Height
Public Roads	1.1x Total Height	1.1x Total Height
Non-Participating Property Lines	1.1x Total Height	1.1x Total Height
Non-Participating, Non-Residential Structures	1.5x Total Height	N/A
Non-Participating Residences	2.0x Total Height	2.0x Total Height
Non-Participating Commercial Structures	N/A	1.5x Total Height
Non-Participating Occupied Buildings	N/A	N/A
Participating Residences	N/A	N/A